

Data Path : Z:\pestpcbsrv\HPCHEM1\ECD_0\Data\P0082123\
 Data File : P0097341.D
 Signal(s) : Signal #1: ECD1A.ch Signal #2: ECD2B.ch
 Acq On : 21 Aug 2023 19:37
 Operator : YP/AJ
 Sample : 04090-04MS
 Misc :
 ALS Vial : 29 Sample Multiplier: 1

Instrument :
 ECD_0
 ClientSampleId :
 TP-KMS

Integration File signal 1: autoint1.e
 Integration File signal 2: autoint2.e
 Quant Time: Aug 22 01:52:58 2023
 Quant Method : Z:\pestpcbsrv\HPCHEM1\ECD_0\methods\P0080723.M
 Quant Title : GC EXTRACTABLES
 QLast Update : Tue Aug 08 04:34:41 2023
 Response via : Initial Calibration
 Integrator: ChemStation

Volume Inj. : 2 µl
 Signal #1 Phase : ZB-MR2 Signal #2 Phase: ZB-MR2
 Signal #1 Info : 30Mx0.32mmx 0.50µ Signal #2 Info : 30M x 0.32mm x 0.25µm

Compound	RT#1	RT#2	Resp#1	Resp#2	ng/ml	ng/ml

System Monitoring Compounds						
1) SA Tetrachlo...	4.410	3.614	61518277	23553469	18.585	17.792
2) SA Decachlor...	10.345	8.626	35392993	17991127	16.175	15.551
Target Compounds						
3) L1 AR-1016-1	5.595	4.716	42445169	27473231	450.664	619.660 #
4) L1 AR-1016-2	5.618	4.716	60914354	27473231	455.351	449.124
5) L1 AR-1016-3	5.682	4.893	37364675	14993703	429.375	458.966
6) L1 AR-1016-4	5.782	4.935	29686012	12697393	441.951	444.176
7) L1 AR-1016-5	6.083	5.148	29647034	16107072	424.639	418.948
8) L2 AR-1221-1	4.618	3.826	6855119	1953576	168.203	112.552 #
9) L2 AR-1221-2	4.708	3.913	5810513	3265344	191.262	252.722 #
10) L2 AR-1221-3	4.785	3.988	25562347	11323800	292.036	285.277
11) L3 AR-1232-1	4.785	3.988	25562347	11323800	350.489	350.071
12) L3 AR-1232-2	5.322	4.716	35026467	27473231	883.482	952.194
13) L3 AR-1232-3	5.618	4.893	60914354	14993703	995.778	988.909
14) L3 AR-1232-4	5.782	4.977	29686012	15588499	972.871	1043.082
15) L3 AR-1232-5	5.874	5.148	28199816	16107072	1007.742	985.336
16) L4 AR-1242-1	5.595	4.716	42445169	27473231	506.403	696.849 #
17) L4 AR-1242-2	5.618	4.716	60914354	27473231	517.268	504.180
18) L4 AR-1242-3	5.682	4.893	37364675	14993703	505.800	507.082
19) L4 AR-1242-4	5.782	4.977	29686012	15588499	498.670	494.655
20) L4 AR-1242-5	6.536	5.501	3337988	12824176	60.669	351.963 #
21) L5 AR-1248-1	5.595	4.716	42445169	27473231	724.394	979.001 #
22) L5 AR-1248-2	5.874	4.935	28199816	12697393	299.942	299.601
23) L5 AR-1248-3	6.083	4.977	29647034	15588499	303.112	355.374
24) L5 AR-1248-4	6.494	5.148	3838664	16107072	42.256	315.516 #
25) L5 AR-1248-5	6.536	5.542	3337988	2026186	37.895	43.339
26) L6 AR-1254-1	6.469	5.501	22466962	12824176	205.571	173.778
27) L6 AR-1254-2	6.692	5.649	23921238	12761803	148.369	193.712 #
28) L6 AR-1254-3	7.070	6.068	12016111	21051610	76.684	208.303 #
29) L6 AR-1254-4	7.363	6.282	7644020	2101069	75.820	36.304 #
30) L6 AR-1254-5	7.792	6.700	75714948	39358874	674.735	447.692 #
31) L7 AR-1260-1	7.238	6.183	51439283	29127464	409.262	413.930
32) L7 AR-1260-2	7.502	6.372	58491474	33548481	434.122	401.956
33) L7 AR-1260-3	7.871	6.526	37271365	31324631	359.159	405.656
34) L7 AR-1260-4	8.103	6.998	45369387	23092589	405.795	360.359
35) L7 AR-1260-5	8.437	7.242	80178864	50735766	381.841	365.969
36) L8 AR-1262-1	7.871	6.792	37271365	13073267	250.940	332.073 #
37) L8 AR-1262-2	8.437	6.998	80178864	23092589	346.393	284.724
38) L8 AR-1262-3	8.779	7.525	52777589	10639535	316.415	165.794 #
39) L8 AR-1262-4	8.857	7.589	11556555	37205916	158.511	327.515 #
40) L8 AR-1262-5	9.550	8.086	19345532	9718508	232.300	185.051
41) L9 AR-1268-1	8.779	7.525	52777589	10639535	171.688	57.421 #

Data Path : Z:\pestpcbsrv\HPCHEM1\ECD_O\Data\P0082123\
 Data File : P0097341.D
 Signal(s) : Signal #1: ECD1A.ch Signal #2: ECD2B.ch
 Acq On : 21 Aug 2023 19:37
 Operator : YP/AJ
 Sample : 04090-04MS
 Misc :
 ALS Vial : 29 Sample Multiplier: 1

Instrument :
 ECD_O
 ClientSampleId :
 TP-KMS

Integration File signal 1: autoint1.e
 Integration File signal 2: autoint2.e
 Quant Time: Aug 22 01:52:58 2023
 Quant Method : Z:\pestpcbsrv\HPCHEM1\ECD_O\methods\P0080723.M
 Quant Title : GC EXTRACTABLES
 QLast Update : Tue Aug 08 04:34:41 2023
 Response via : Initial Calibration
 Integrator: ChemStation

Volume Inj. : 2 µl
 Signal #1 Phase : ZB-MR1 Signal #2 Phase: ZB-MR2
 Signal #1 Info : 30Mx0.32mmx 0.50µ Signal #2 Info : 30M x 0.32mm x 0.25µm

	Compound	RT#1	RT#2	Resp#1	Resp#2	ng/ml	ng/ml
42)	L9 AR-1268-2	8.857	7.589	11556555	37205916	42.147	221.876 #
43)	L9 AR-1268-3	9.101	7.796	1786361	1039024	6.995	7.191
44)	L9 AR-1268-4	9.550	8.086	19345532	9718508	208.660	163.136
45)	L9 AR-1268-5	9.987	8.375	6807499	3668400	8.427	8.820

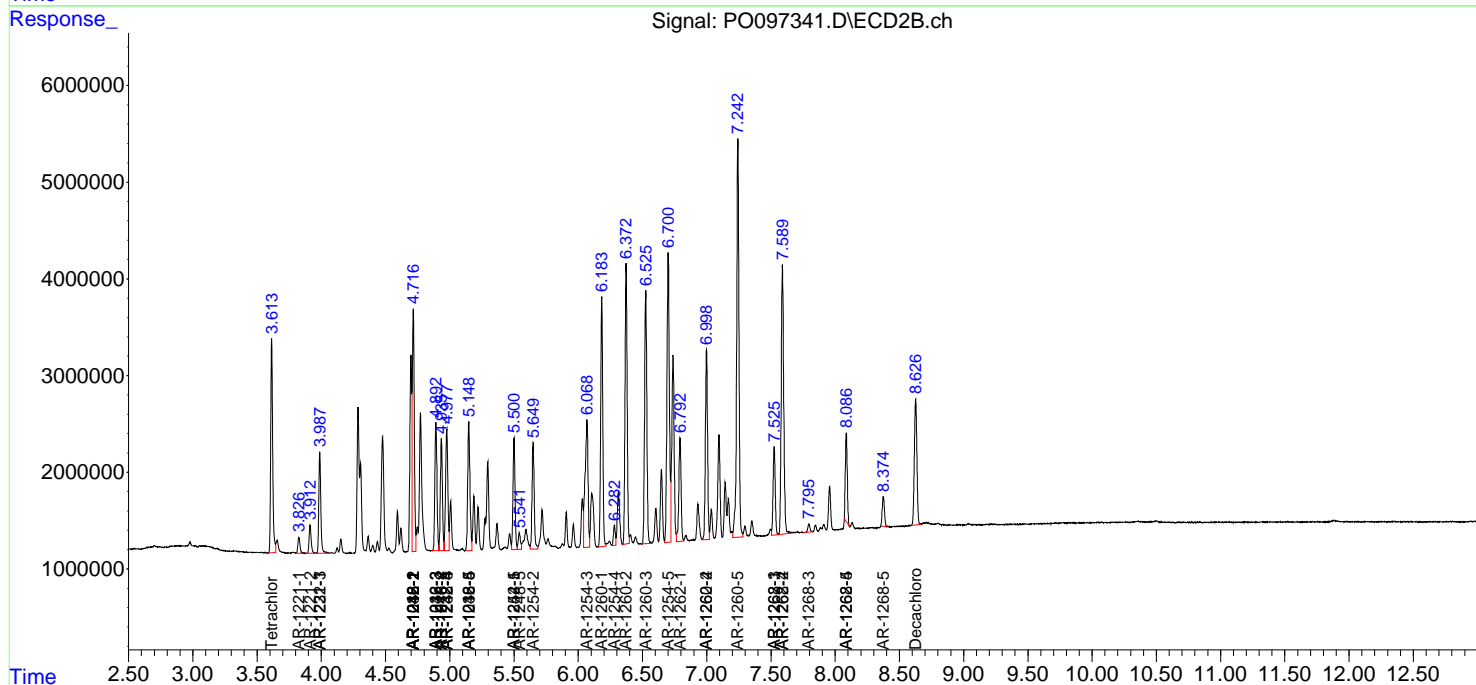
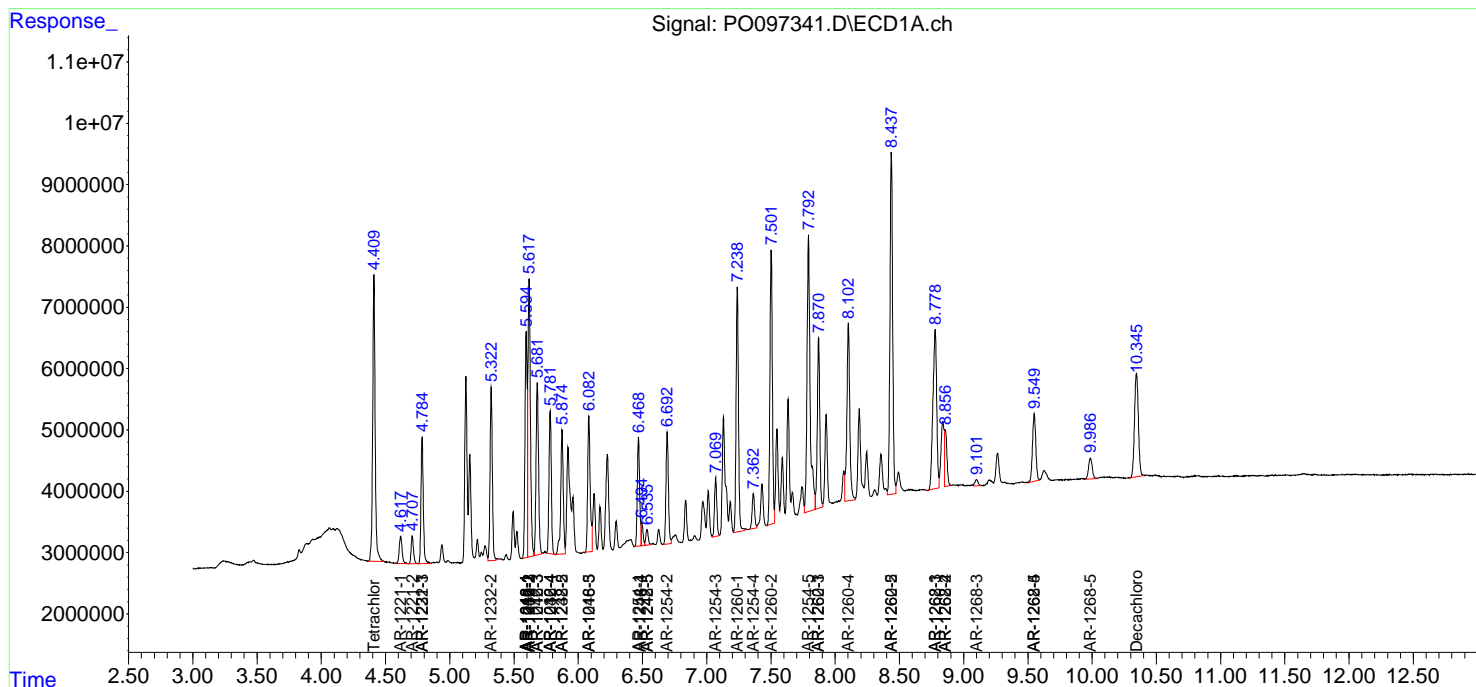
(f)=RT Delta > 1/2 Window (#)=Amounts differ by > 25% (m)=manual int.

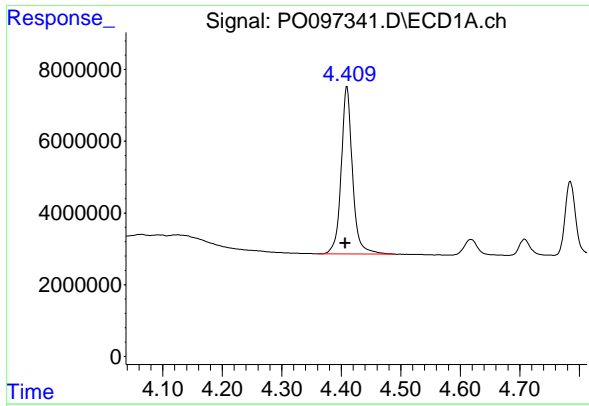
Data Path : Z:\pestpcbsrv\HPCHEM1\ECD_O\Data\PO082123\
 Data File : PO097341.D
 Signal(s) : Signal #1: ECD1A.ch Signal #2: ECD2B.ch
 Acq On : 21 Aug 2023 19:37
 Operator : YP/AJ
 Sample : 04090-04MS
 Misc :
 ALS Vial : 29 Sample Multiplier: 1

Instrument :
 ECD_O
 ClientSampleId :
 TP-KMS

Integration File signal 1: autoint1.e
 Integration File signal 2: autoint2.e
 Quant Time: Aug 22 01:52:58 2023
 Quant Method : Z:\pestpcbsrv\HPCHEM1\ECD_O\methods\PO080723.M
 Quant Title : GC EXTRACTABLES
 QLast Update : Tue Aug 08 04:34:41 2023
 Response via : Initial Calibration
 Integrator: ChemStation

Volume Inj. : 2 µl
 Signal #1 Phase : ZB-MR1 Signal #2 Phase: ZB-MR2
 Signal #1 Info : 30Mx0.32mmx 0.50µ Signal #2 Info : 30M x 0.32mm x 0.25µm

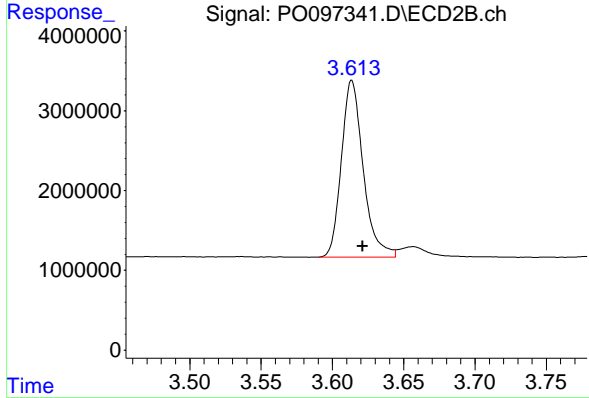




#1 Tetrachloro-m-xylene

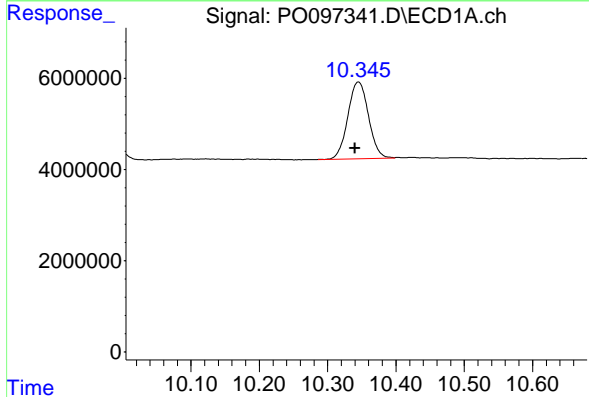
R.T.: 4.410 min
 Delta R.T.: 0.003 min
 Response: 61518277
 Conc: 18.58 ng/ml

Instrument :
 ECD_O
 ClientSampleId :
 TP-KMS



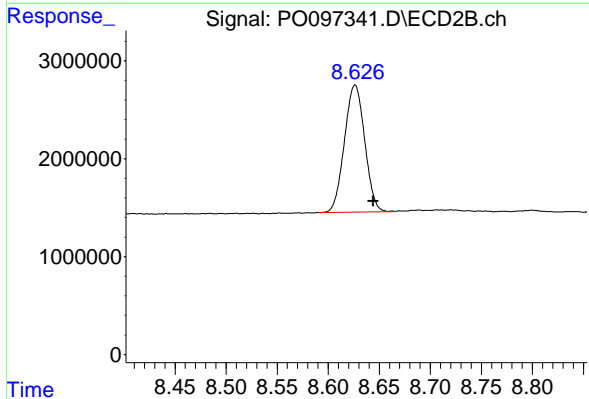
#1 Tetrachloro-m-xylene

R.T.: 3.614 min
 Delta R.T.: -0.007 min
 Response: 23553469
 Conc: 17.79 ng/ml



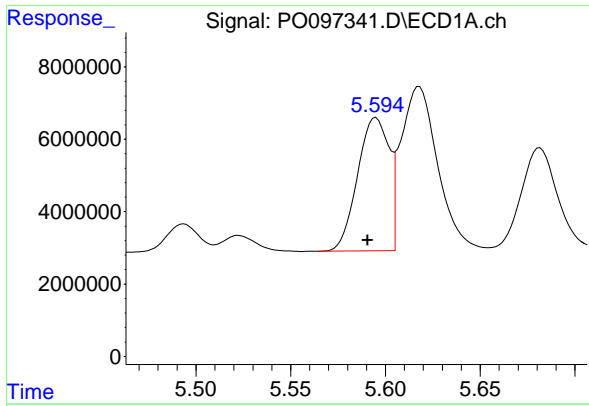
#2 Decachlorobiphenyl

R.T.: 10.345 min
 Delta R.T.: 0.006 min
 Response: 35392993
 Conc: 16.17 ng/ml



#2 Decachlorobiphenyl

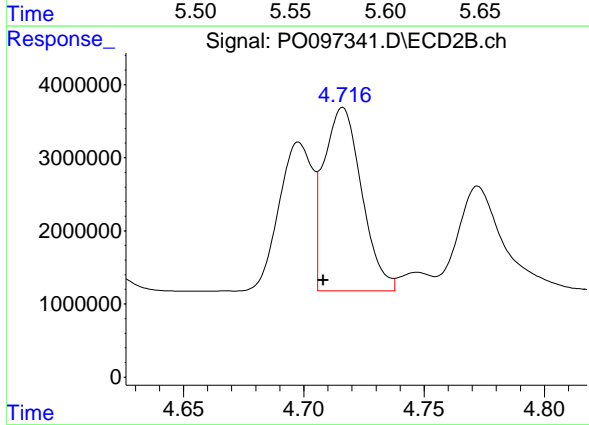
R.T.: 8.626 min
 Delta R.T.: -0.018 min
 Response: 17991127
 Conc: 15.55 ng/ml



#3 AR-1016-1

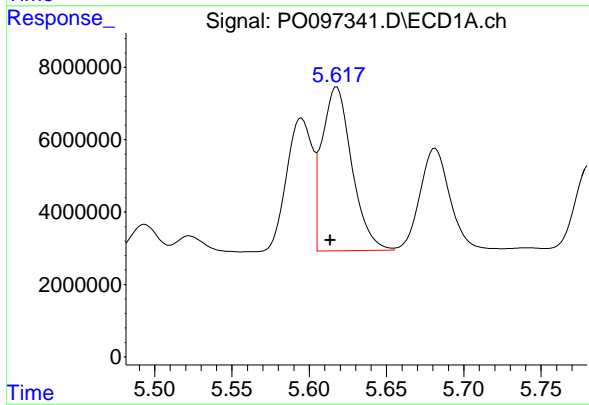
R.T.: 5.595 min
 Delta R.T.: 0.004 min
 Response: 42445169
 Conc: 450.66 ng/ml

Instrument :
 ECD_O
 ClientSampleId :
 TP-KMS



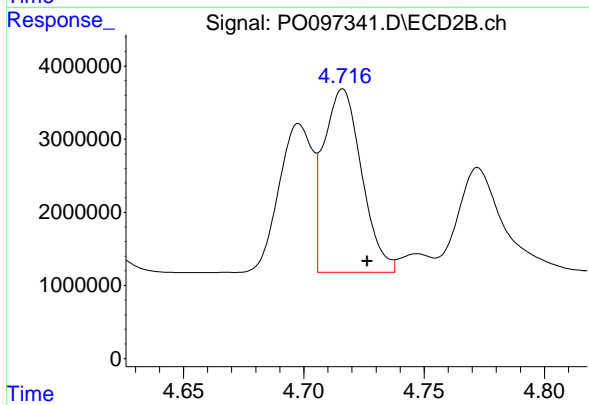
#3 AR-1016-1

R.T.: 4.716 min
 Delta R.T.: 0.008 min
 Response: 27473231
 Conc: 619.66 ng/ml



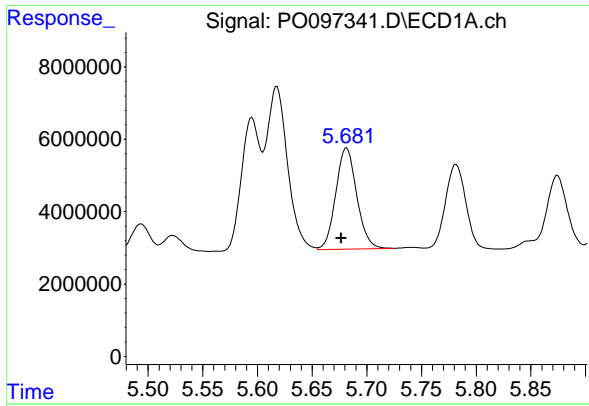
#4 AR-1016-2

R.T.: 5.618 min
 Delta R.T.: 0.004 min
 Response: 60914354
 Conc: 455.35 ng/ml



#4 AR-1016-2

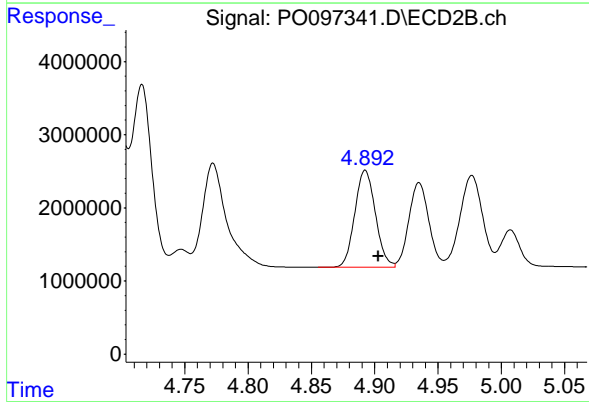
R.T.: 4.716 min
 Delta R.T.: -0.010 min
 Response: 27473231
 Conc: 449.12 ng/ml



#5 AR-1016-3

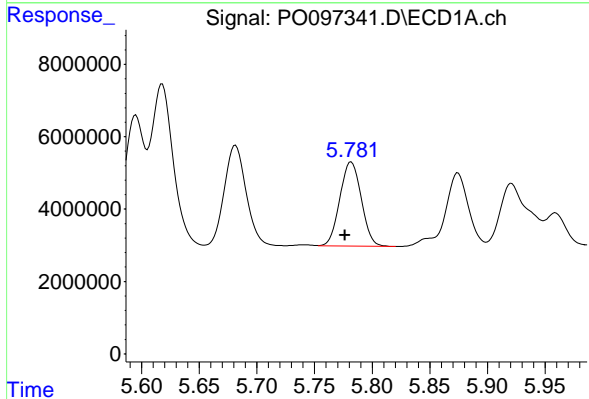
R.T.: 5.682 min
 Delta R.T.: 0.005 min
 Response: 37364675
 Conc: 429.37 ng/ml

Instrument :
 ECD_O
 ClientSampleId :
 TP-KMS



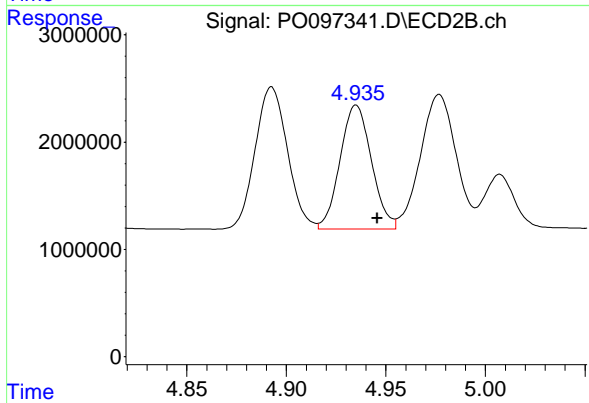
#5 AR-1016-3

R.T.: 4.893 min
 Delta R.T.: -0.010 min
 Response: 14993703
 Conc: 458.97 ng/ml



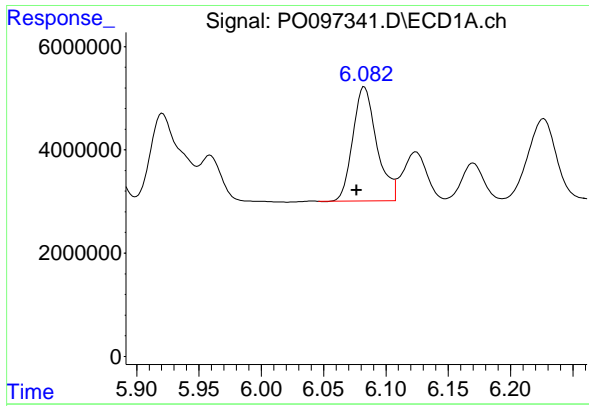
#6 AR-1016-4

R.T.: 5.782 min
 Delta R.T.: 0.005 min
 Response: 29686012
 Conc: 441.95 ng/ml



#6 AR-1016-4

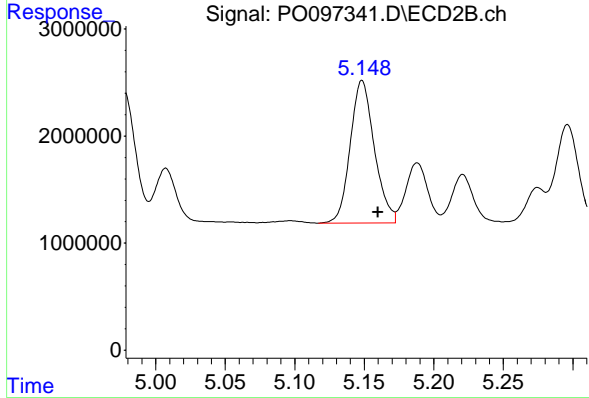
R.T.: 4.935 min
 Delta R.T.: -0.011 min
 Response: 12697393
 Conc: 444.18 ng/ml



#7 AR-1016-5

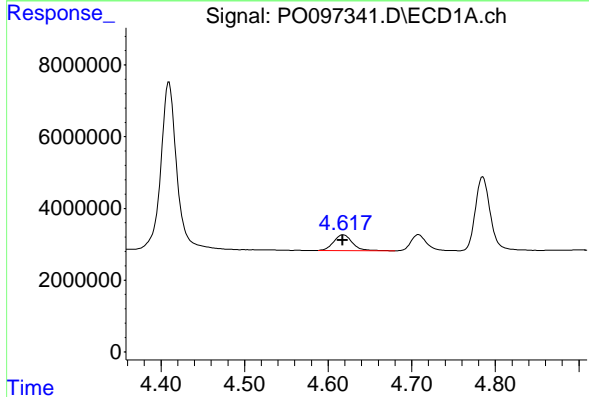
R.T.: 6.083 min
 Delta R.T.: 0.006 min
 Response: 29647034
 Conc: 424.64 ng/ml

Instrument :
 ECD_O
 ClientSampleId :
 TP-KMS



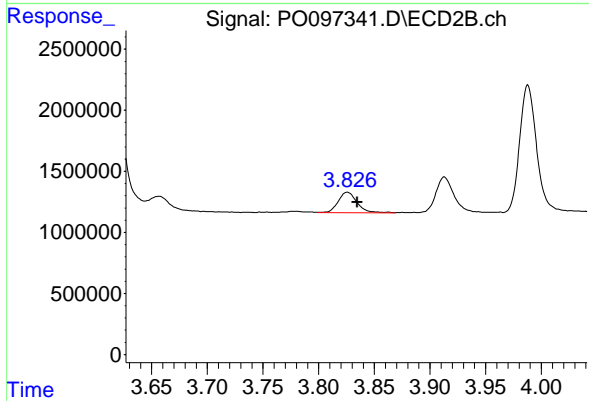
#7 AR-1016-5

R.T.: 5.148 min
 Delta R.T.: -0.011 min
 Response: 16107072
 Conc: 418.95 ng/ml



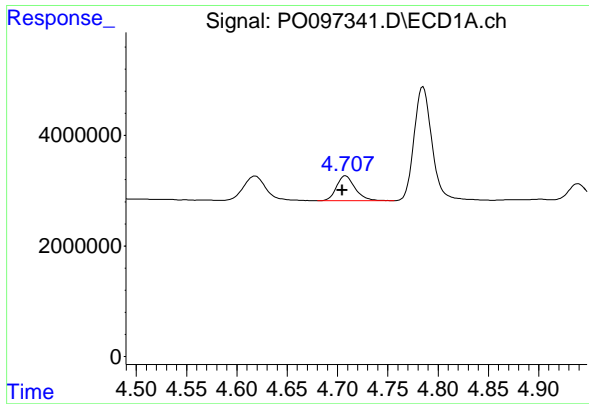
#8 AR-1221-1

R.T.: 4.618 min
 Delta R.T.: 0.000 min
 Response: 6855119
 Conc: 168.20 ng/ml



#8 AR-1221-1

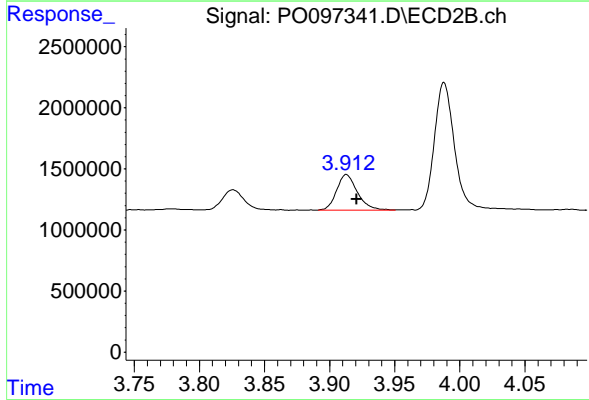
R.T.: 3.826 min
 Delta R.T.: -0.009 min
 Response: 1953576
 Conc: 112.55 ng/ml



#9 AR-1221-2

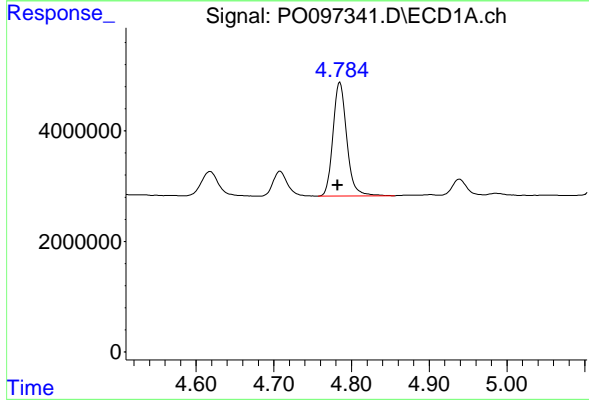
R.T.: 4.708 min
 Delta R.T.: 0.003 min
 Response: 5810513
 Conc: 191.26 ng/ml

Instrument :
 ECD_O
 ClientSampleId :
 TP-KMS



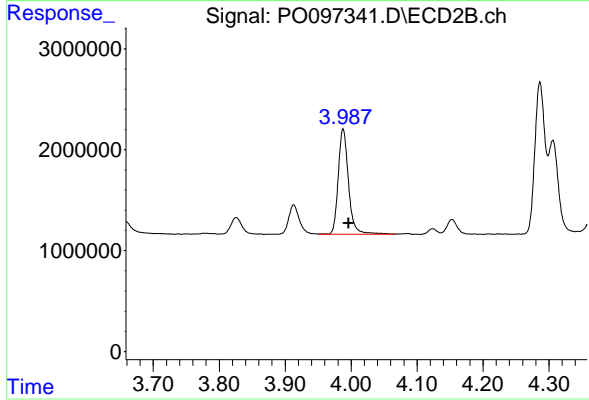
#9 AR-1221-2

R.T.: 3.913 min
 Delta R.T.: -0.008 min
 Response: 3265344
 Conc: 252.72 ng/ml



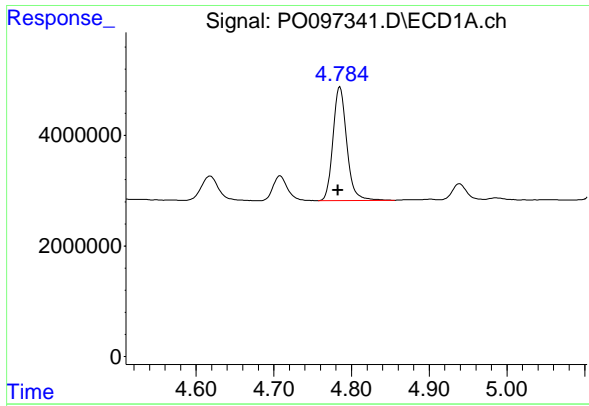
#10 AR-1221-3

R.T.: 4.785 min
 Delta R.T.: 0.003 min
 Response: 25562347
 Conc: 292.04 ng/ml



#10 AR-1221-3

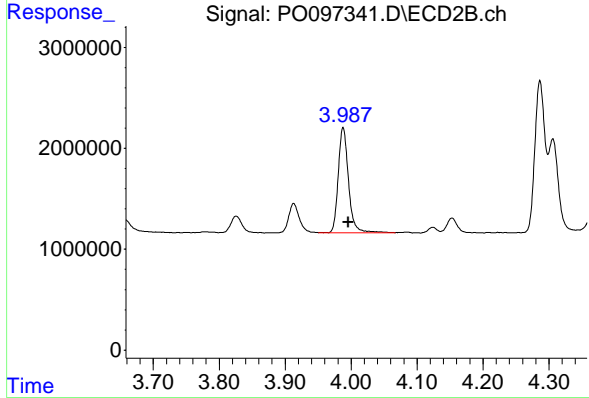
R.T.: 3.988 min
 Delta R.T.: -0.009 min
 Response: 11323800
 Conc: 285.28 ng/ml



#11 AR-1232-1

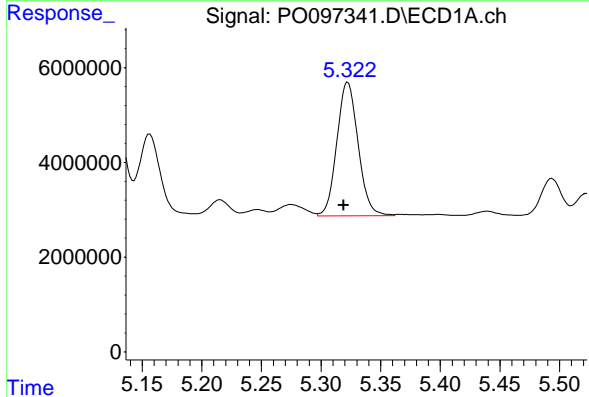
R.T.: 4.785 min
 Delta R.T.: 0.003 min
 Response: 25562347
 Conc: 350.49 ng/ml

Instrument :
 ECD_O
 ClientSampleId :
 TP-KMS



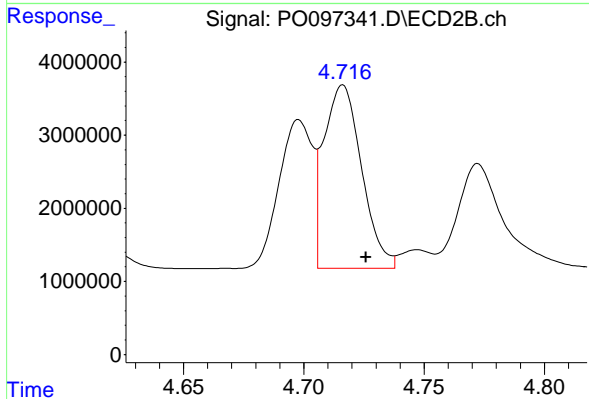
#11 AR-1232-1

R.T.: 3.988 min
 Delta R.T.: -0.008 min
 Response: 11323800
 Conc: 350.07 ng/ml



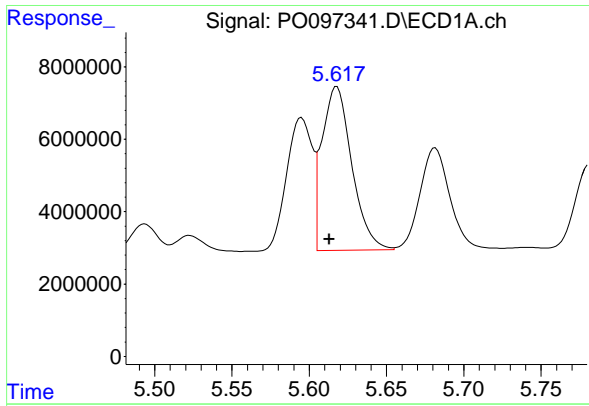
#12 AR-1232-2

R.T.: 5.322 min
 Delta R.T.: 0.003 min
 Response: 35026467
 Conc: 883.48 ng/ml



#12 AR-1232-2

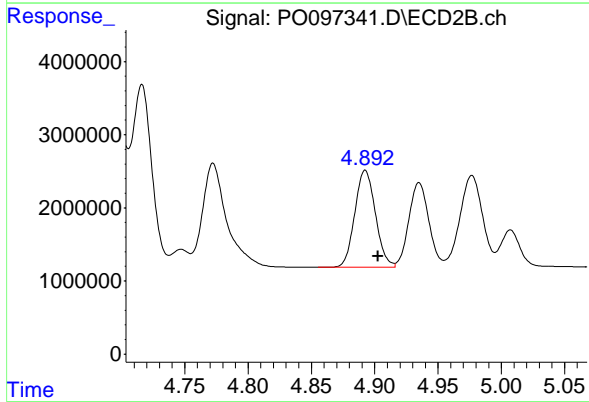
R.T.: 4.716 min
 Delta R.T.: -0.010 min
 Response: 27473231
 Conc: 952.19 ng/ml



#13 AR-1232-3

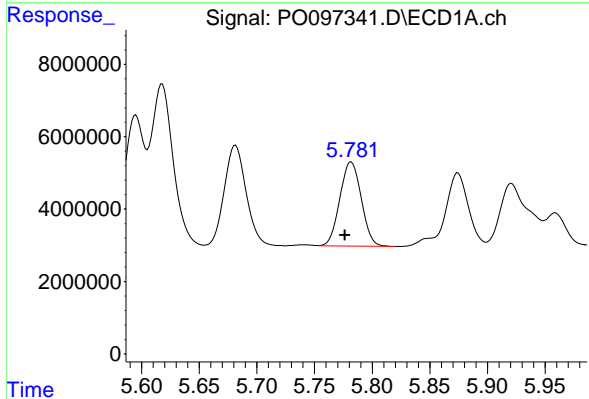
R.T.: 5.618 min
 Delta R.T.: 0.005 min
 Response: 60914354
 Conc: 995.78 ng/ml

Instrument :
 ECD_O
 ClientSampleId :
 TP-KMS



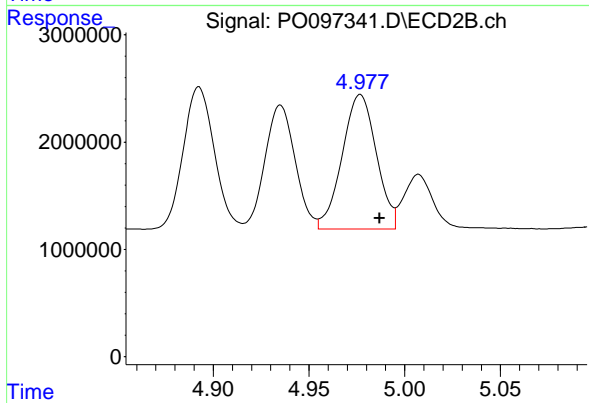
#13 AR-1232-3

R.T.: 4.893 min
 Delta R.T.: -0.010 min
 Response: 14993703
 Conc: 988.91 ng/ml



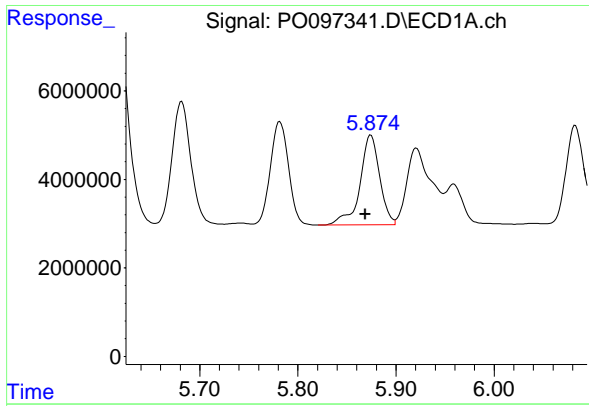
#14 AR-1232-4

R.T.: 5.782 min
 Delta R.T.: 0.005 min
 Response: 29686012
 Conc: 972.87 ng/ml



#14 AR-1232-4

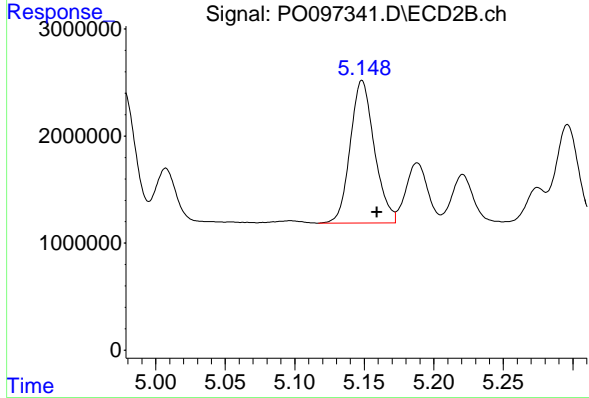
R.T.: 4.977 min
 Delta R.T.: -0.010 min
 Response: 15588499
 Conc: 1043.08 ng/ml



#15 AR-1232-5

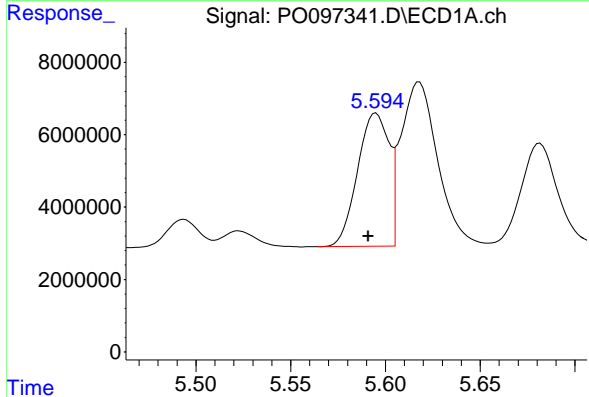
R.T.: 5.874 min
 Delta R.T.: 0.005 min
 Response: 28199816
 Conc: 1007.74 ng/ml

Instrument :
 ECD_O
 ClientSampleId :
 TP-KMS



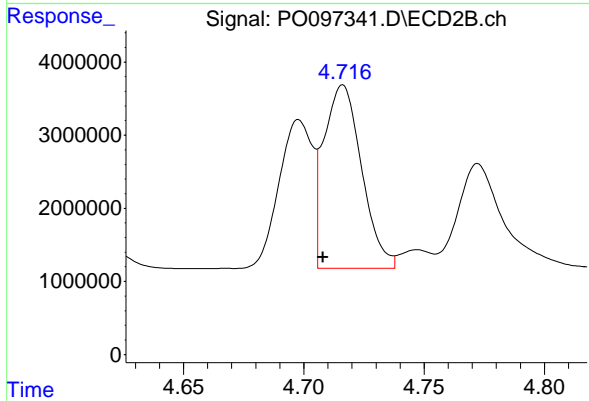
#15 AR-1232-5

R.T.: 5.148 min
 Delta R.T.: -0.011 min
 Response: 16107072
 Conc: 985.34 ng/ml



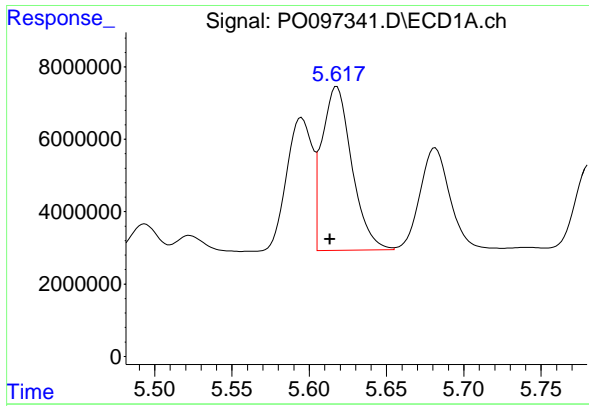
#16 AR-1242-1

R.T.: 5.595 min
 Delta R.T.: 0.004 min
 Response: 42445169
 Conc: 506.40 ng/ml



#16 AR-1242-1

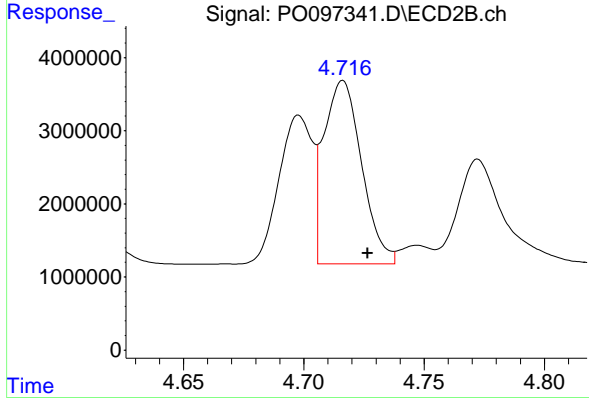
R.T.: 4.716 min
 Delta R.T.: 0.008 min
 Response: 27473231
 Conc: 696.85 ng/ml



#17 AR-1242-2

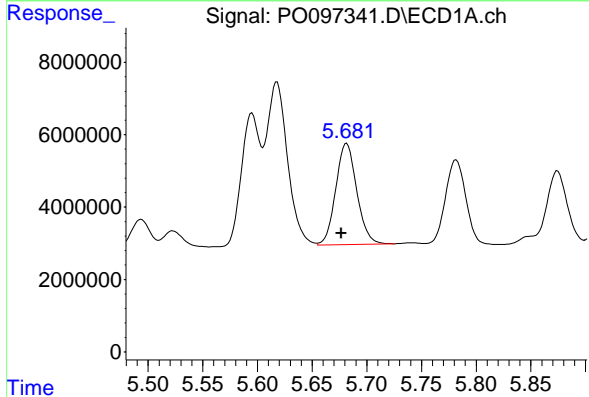
R.T.: 5.618 min
 Delta R.T.: 0.004 min
 Response: 60914354
 Conc: 517.27 ng/ml

Instrument :
 ECD_O
 ClientSampleId :
 TP-KMS



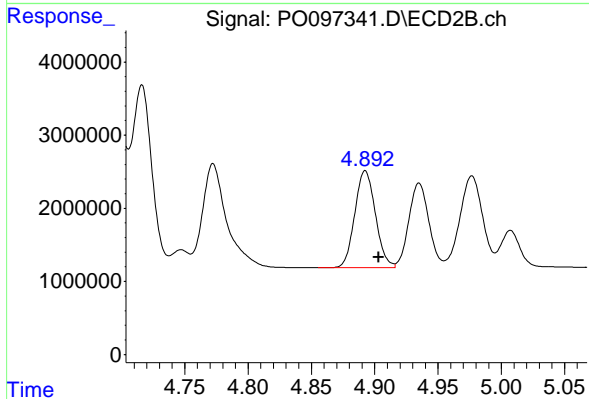
#17 AR-1242-2

R.T.: 4.716 min
 Delta R.T.: -0.010 min
 Response: 27473231
 Conc: 504.18 ng/ml



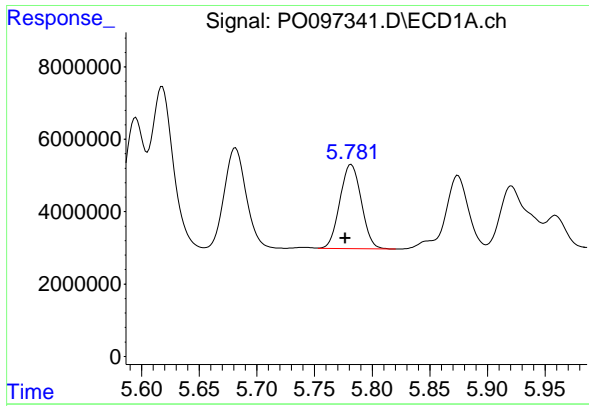
#18 AR-1242-3

R.T.: 5.682 min
 Delta R.T.: 0.005 min
 Response: 37364675
 Conc: 505.80 ng/ml



#18 AR-1242-3

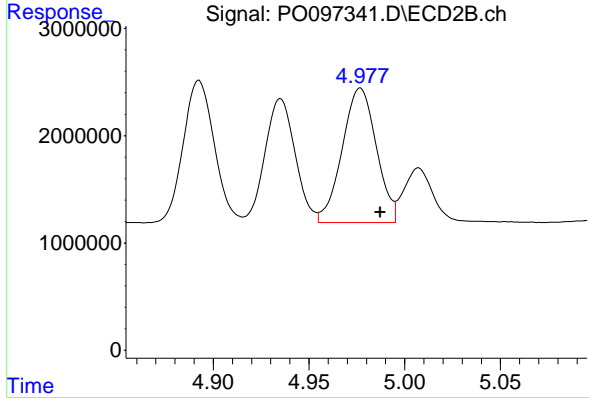
R.T.: 4.893 min
 Delta R.T.: -0.010 min
 Response: 14993703
 Conc: 507.08 ng/ml



#19 AR-1242-4

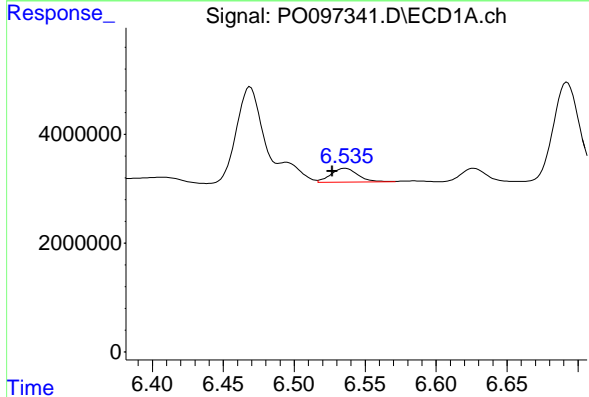
R.T.: 5.782 min
 Delta R.T.: 0.005 min
 Response: 29686012
 Conc: 498.67 ng/ml

Instrument :
 ECD_O
 ClientSampleId :
 TP-KMS



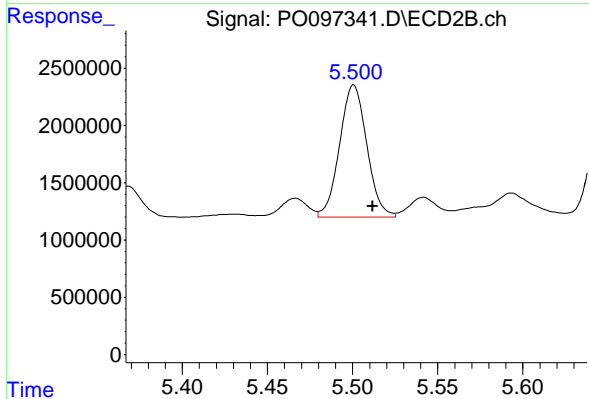
#19 AR-1242-4

R.T.: 4.977 min
 Delta R.T.: -0.010 min
 Response: 15588499
 Conc: 494.65 ng/ml



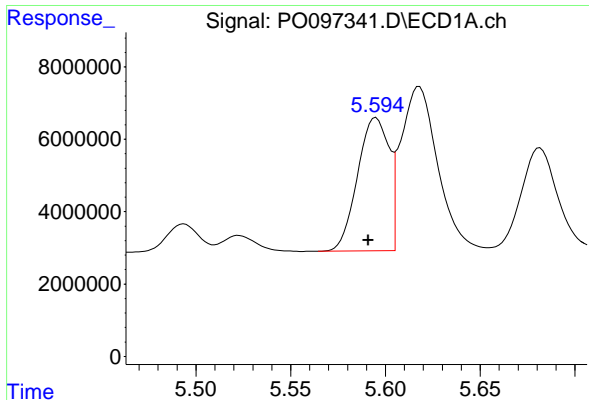
#20 AR-1242-5

R.T.: 6.536 min
 Delta R.T.: 0.009 min
 Response: 3337988
 Conc: 60.67 ng/ml



#20 AR-1242-5

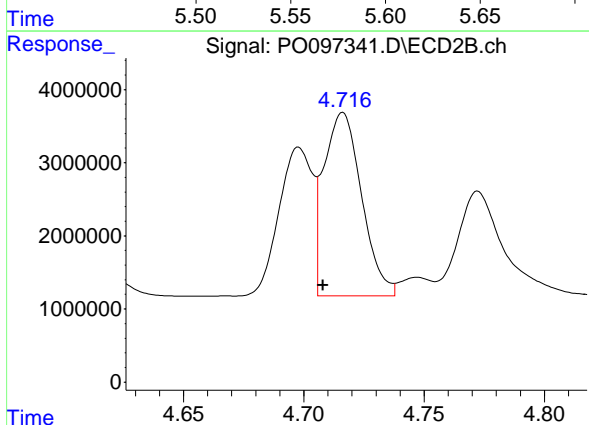
R.T.: 5.501 min
 Delta R.T.: -0.011 min
 Response: 12824176
 Conc: 351.96 ng/ml



#21 AR-1248-1

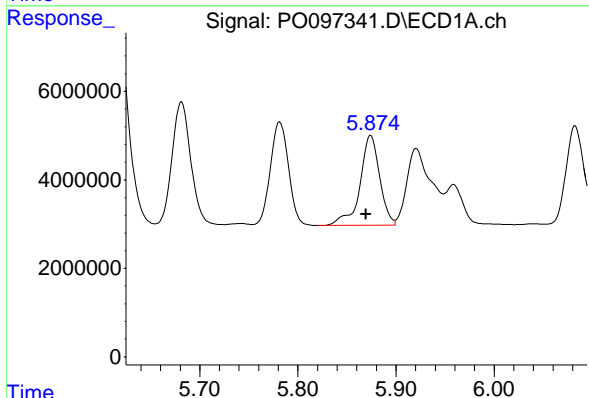
R.T.: 5.595 min
 Delta R.T.: 0.004 min
 Response: 42445169
 Conc: 724.39 ng/ml

Instrument :
 ECD_O
 ClientSampleId :
 TP-KMS



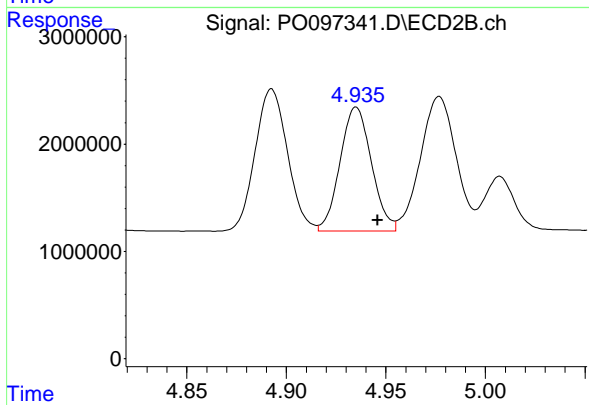
#21 AR-1248-1

R.T.: 4.716 min
 Delta R.T.: 0.008 min
 Response: 27473231
 Conc: 979.00 ng/ml



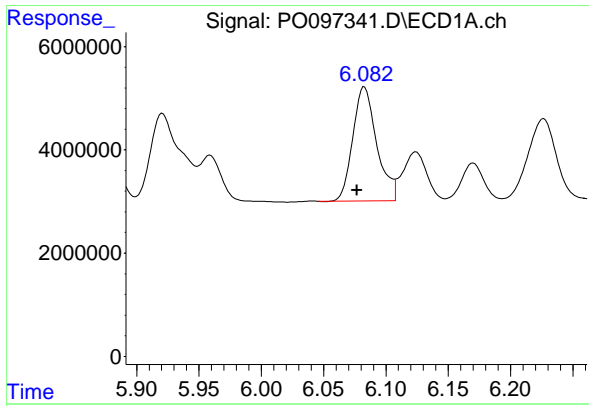
#22 AR-1248-2

R.T.: 5.874 min
 Delta R.T.: 0.005 min
 Response: 28199816
 Conc: 299.94 ng/ml



#22 AR-1248-2

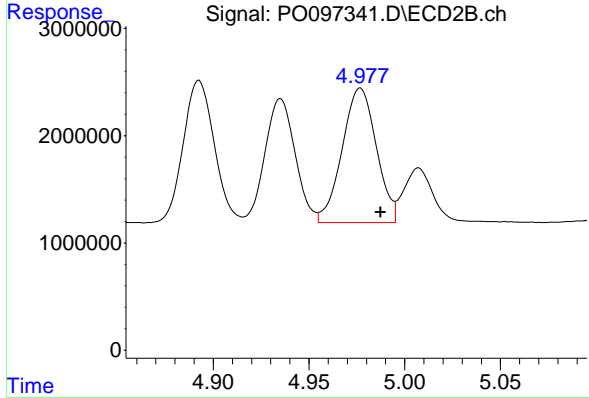
R.T.: 4.935 min
 Delta R.T.: -0.011 min
 Response: 12697393
 Conc: 299.60 ng/ml



#23 AR-1248-3

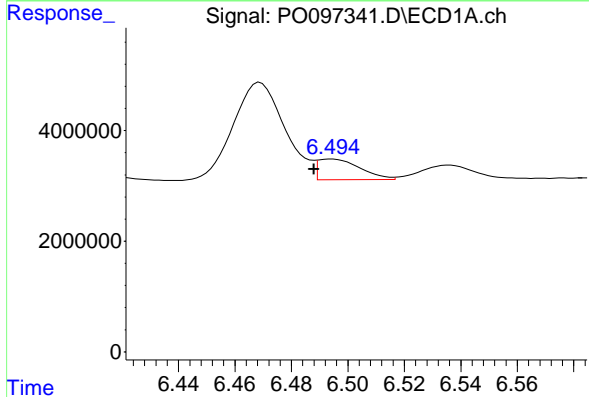
R.T.: 6.083 min
 Delta R.T.: 0.006 min
 Response: 29647034
 Conc: 303.11 ng/ml

Instrument :
 ECD_O
 ClientSampleId :
 TP-KMS



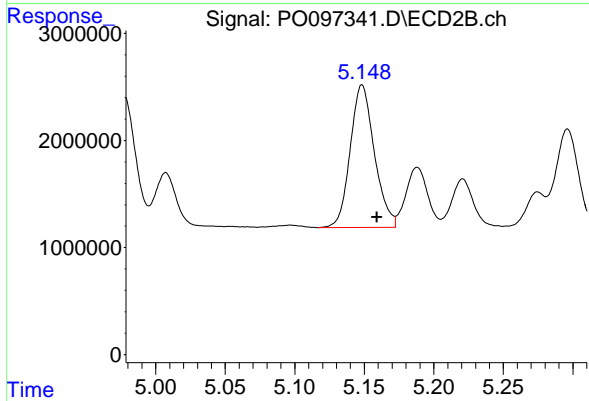
#23 AR-1248-3

R.T.: 4.977 min
 Delta R.T.: -0.011 min
 Response: 15588499
 Conc: 355.37 ng/ml



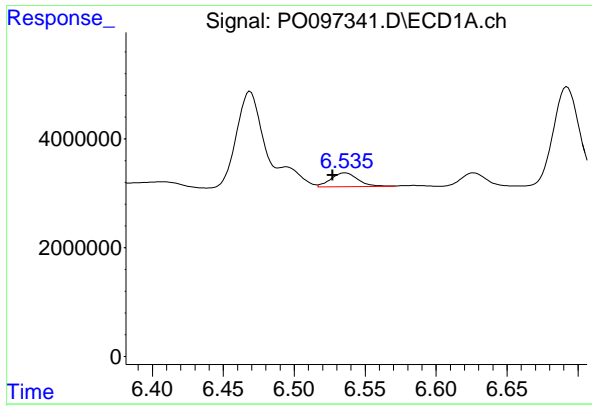
#24 AR-1248-4

R.T.: 6.494 min
 Delta R.T.: 0.006 min
 Response: 3838664
 Conc: 42.26 ng/ml



#24 AR-1248-4

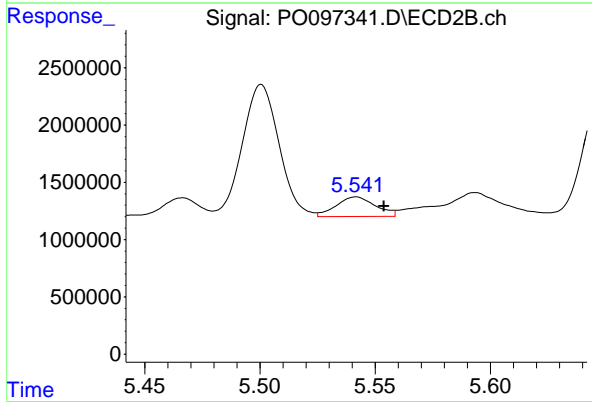
R.T.: 5.148 min
 Delta R.T.: -0.011 min
 Response: 16107072
 Conc: 315.52 ng/ml



#25 AR-1248-5

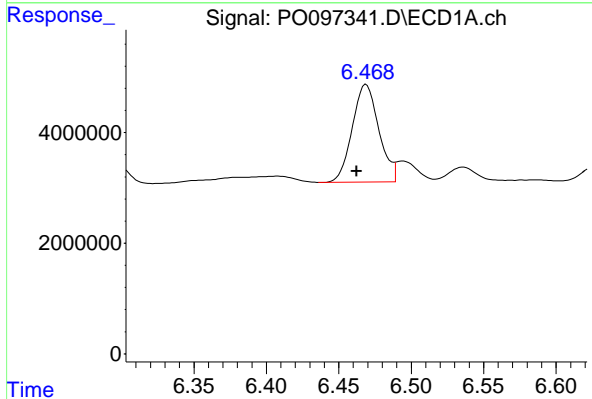
R.T.: 6.536 min
 Delta R.T.: 0.009 min
 Response: 3337988
 Conc: 37.89 ng/ml

Instrument :
 ECD_O
 ClientSampleId :
 TP-KMS



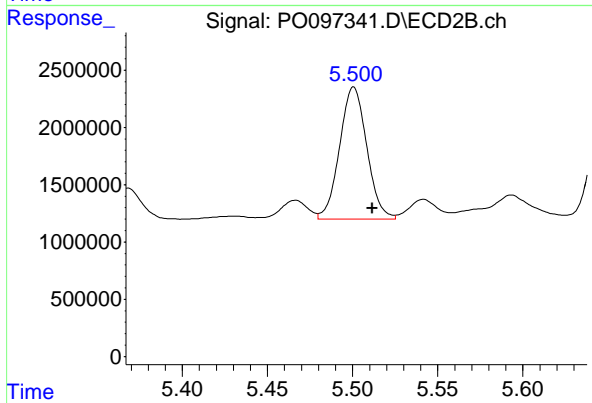
#25 AR-1248-5

R.T.: 5.542 min
 Delta R.T.: -0.012 min
 Response: 2026186
 Conc: 43.34 ng/ml



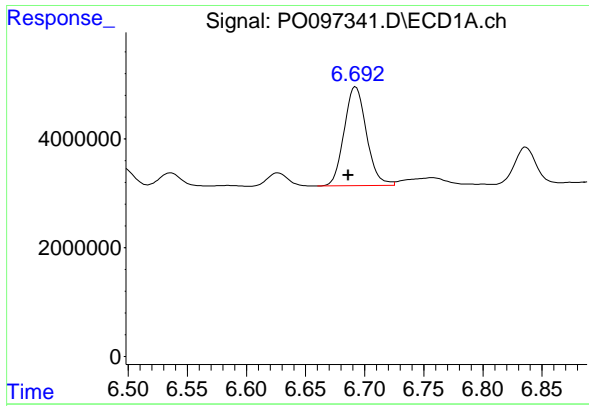
#26 AR-1254-1

R.T.: 6.469 min
 Delta R.T.: 0.006 min
 Response: 22466962
 Conc: 205.57 ng/ml



#26 AR-1254-1

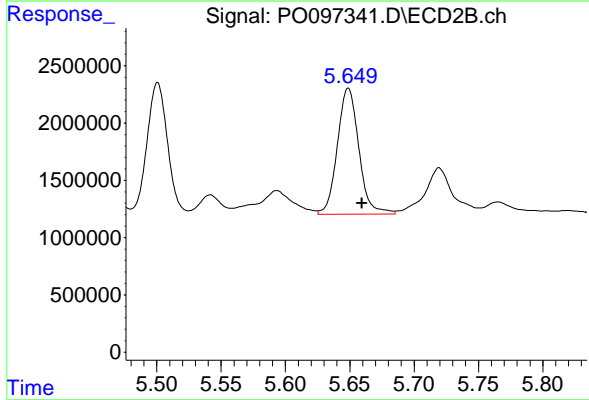
R.T.: 5.501 min
 Delta R.T.: -0.011 min
 Response: 12824176
 Conc: 173.78 ng/ml



#27 AR-1254-2

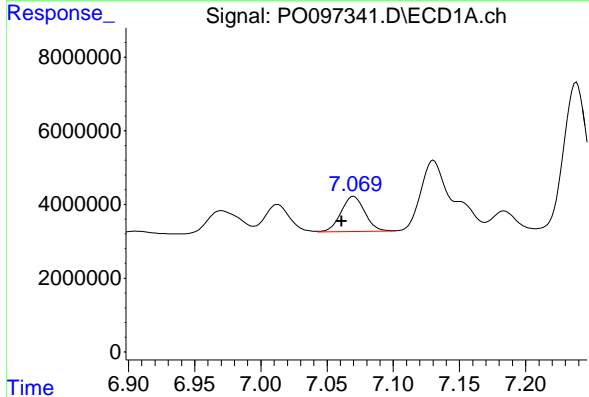
R.T.: 6.692 min
 Delta R.T.: 0.006 min
 Response: 23921238
 Conc: 148.37 ng/ml

Instrument :
 ECD_O
 ClientSampleId :
 TP-KMS



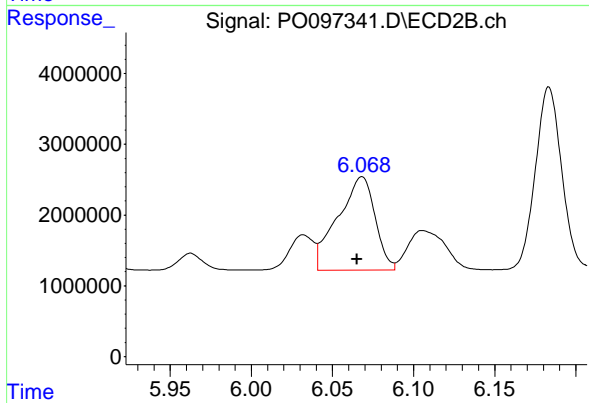
#27 AR-1254-2

R.T.: 5.649 min
 Delta R.T.: -0.011 min
 Response: 12761803
 Conc: 193.71 ng/ml



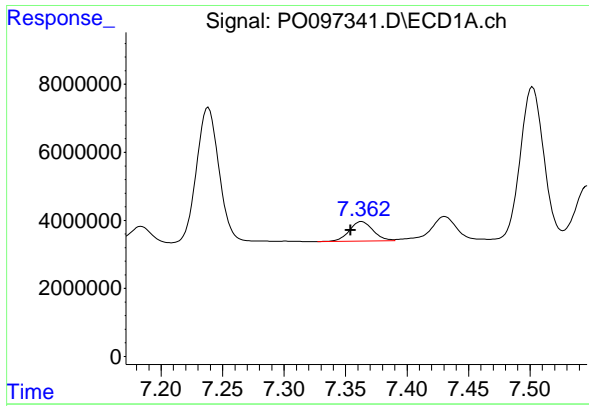
#28 AR-1254-3

R.T.: 7.070 min
 Delta R.T.: 0.009 min
 Response: 12016111
 Conc: 76.68 ng/ml



#28 AR-1254-3

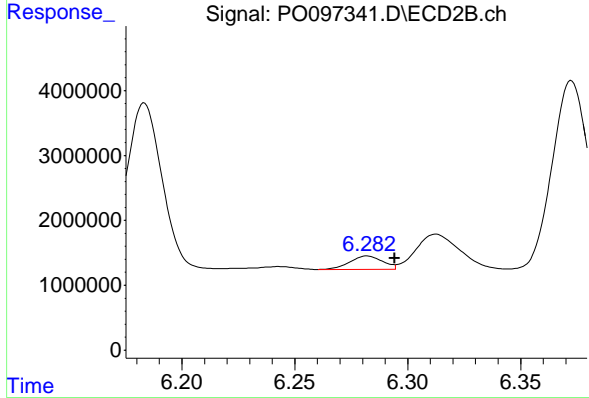
R.T.: 6.068 min
 Delta R.T.: 0.003 min
 Response: 21051610
 Conc: 208.30 ng/ml



#29 AR-1254-4

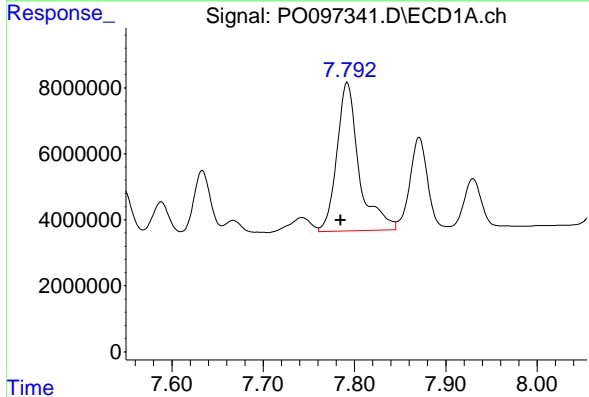
R.T.: 7.363 min
 Delta R.T.: 0.009 min
 Response: 7644020
 Conc: 75.82 ng/ml

Instrument :
 ECD_O
 ClientSampleId :
 TP-KMS



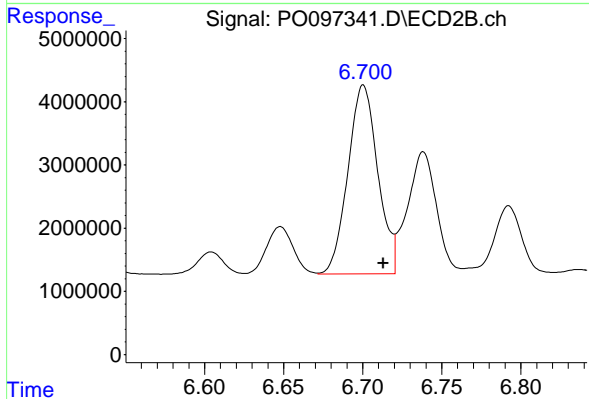
#29 AR-1254-4

R.T.: 6.282 min
 Delta R.T.: -0.012 min
 Response: 2101069
 Conc: 36.30 ng/ml



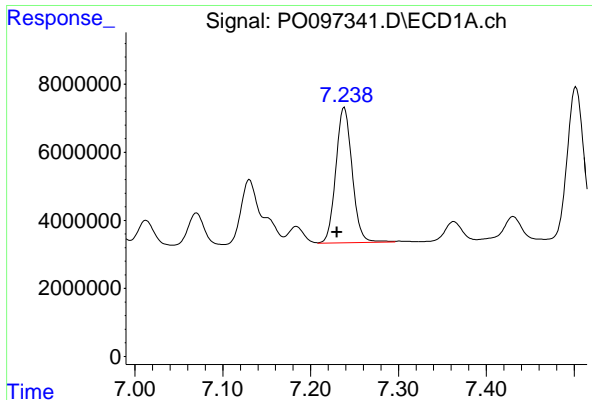
#30 AR-1254-5

R.T.: 7.792 min
 Delta R.T.: 0.007 min
 Response: 75714948
 Conc: 674.73 ng/ml



#30 AR-1254-5

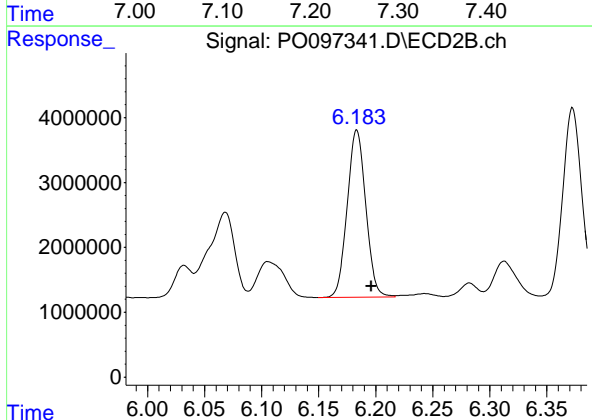
R.T.: 6.700 min
 Delta R.T.: -0.013 min
 Response: 39358874
 Conc: 447.69 ng/ml



#31 AR-1260-1

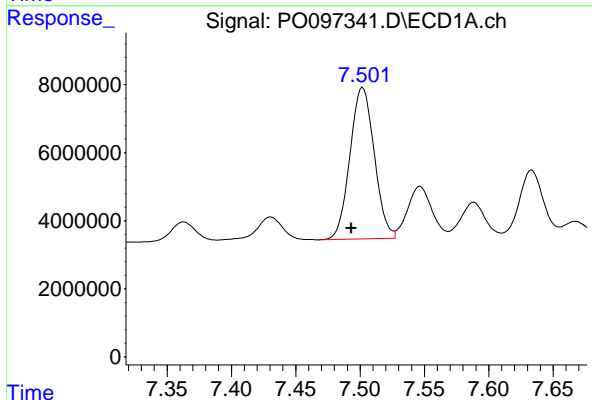
R.T.: 7.238 min
 Delta R.T.: 0.009 min
 Response: 51439283
 Conc: 409.26 ng/ml

Instrument :
 ECD_O
 ClientSampleId :
 TP-KMS



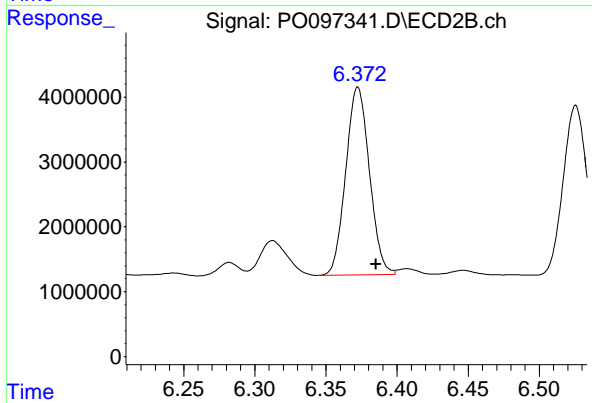
#31 AR-1260-1

R.T.: 6.183 min
 Delta R.T.: -0.013 min
 Response: 29127464
 Conc: 413.93 ng/ml



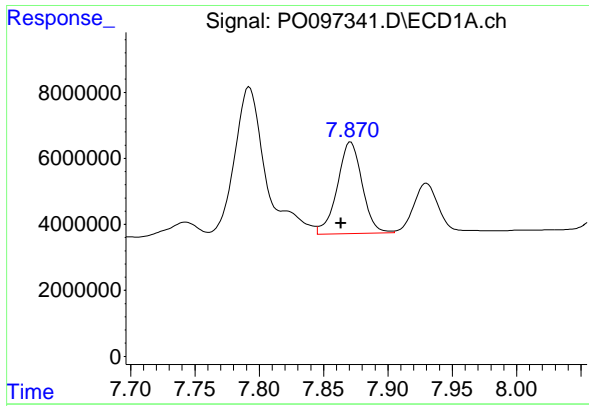
#32 AR-1260-2

R.T.: 7.502 min
 Delta R.T.: 0.009 min
 Response: 58491474
 Conc: 434.12 ng/ml



#32 AR-1260-2

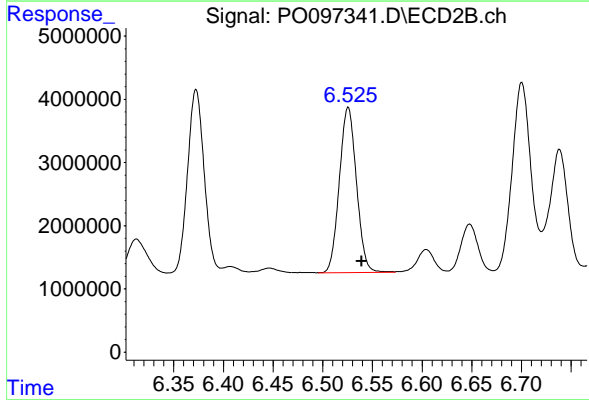
R.T.: 6.372 min
 Delta R.T.: -0.013 min
 Response: 33548481
 Conc: 401.96 ng/ml



#33 AR-1260-3

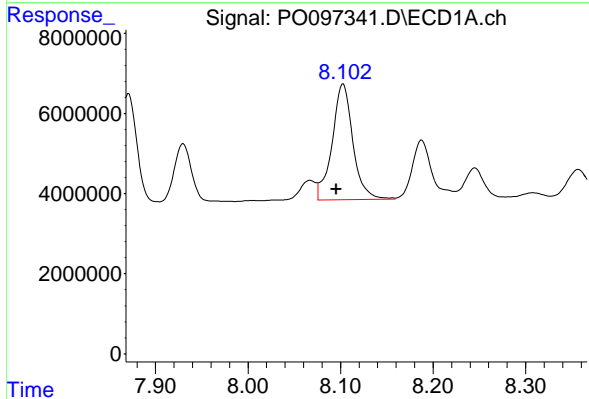
R.T.: 7.871 min
 Delta R.T.: 0.007 min
 Response: 37271365
 Conc: 359.16 ng/ml

Instrument :
 ECD_O
 ClientSampleId :
 TP-KMS



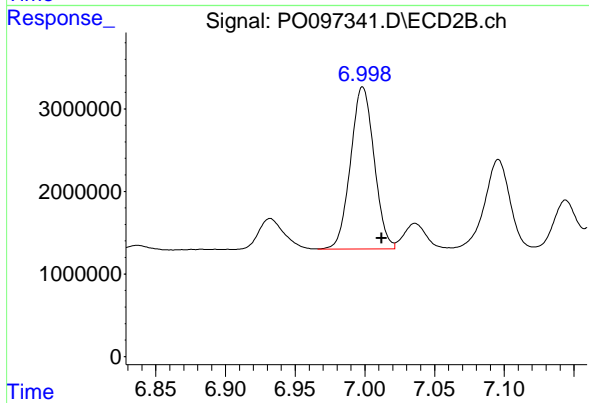
#33 AR-1260-3

R.T.: 6.526 min
 Delta R.T.: -0.013 min
 Response: 31324631
 Conc: 405.66 ng/ml



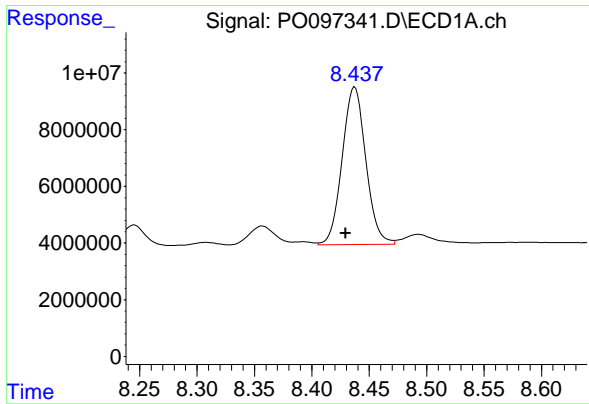
#34 AR-1260-4

R.T.: 8.103 min
 Delta R.T.: 0.007 min
 Response: 45369387
 Conc: 405.80 ng/ml



#34 AR-1260-4

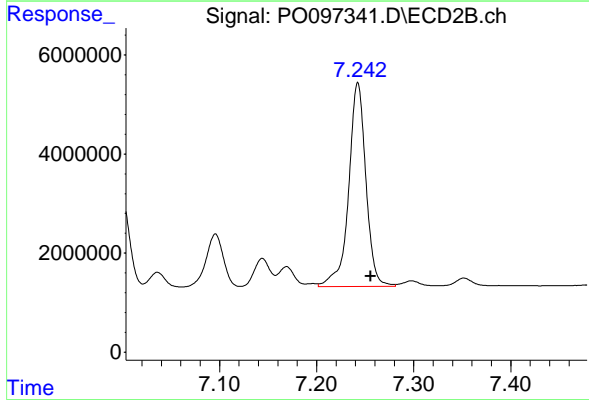
R.T.: 6.998 min
 Delta R.T.: -0.014 min
 Response: 23092589
 Conc: 360.36 ng/ml



#35 AR-1260-5

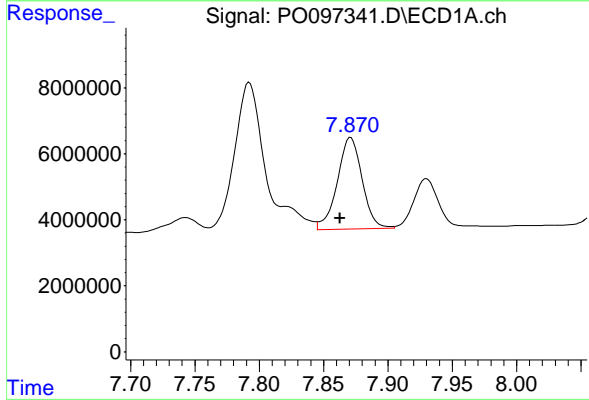
R.T.: 8.437 min
 Delta R.T.: 0.008 min
 Response: 80178864
 Conc: 381.84 ng/ml

Instrument :
 ECD_O
 ClientSampleId :
 TP-KMS



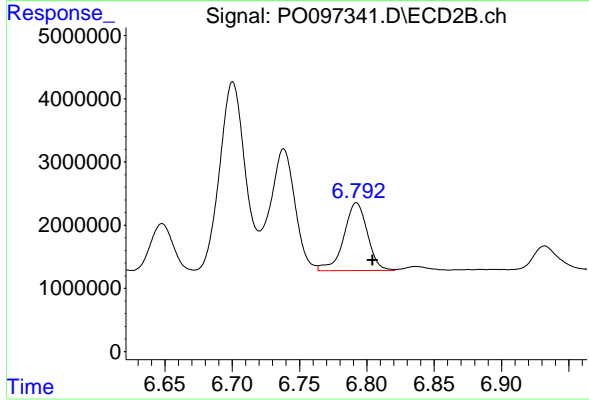
#35 AR-1260-5

R.T.: 7.242 min
 Delta R.T.: -0.013 min
 Response: 50735766
 Conc: 365.97 ng/ml



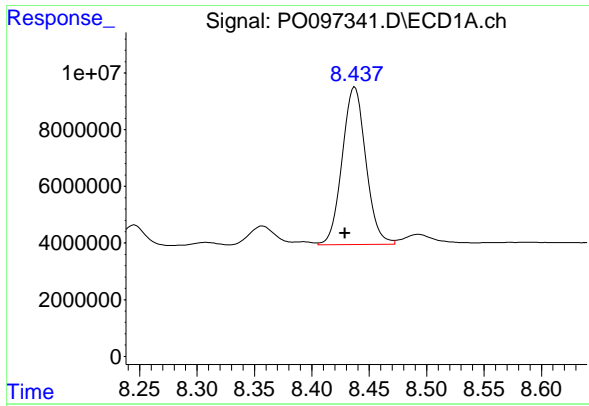
#36 AR-1262-1

R.T.: 7.871 min
 Delta R.T.: 0.009 min
 Response: 37271365
 Conc: 250.94 ng/ml



#36 AR-1262-1

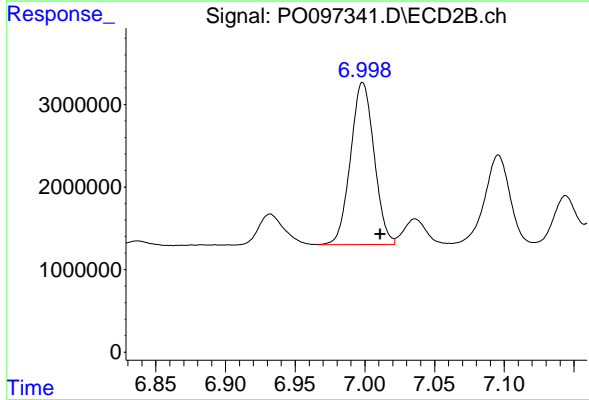
R.T.: 6.792 min
 Delta R.T.: -0.012 min
 Response: 13073267
 Conc: 332.07 ng/ml



#37 AR-1262-2

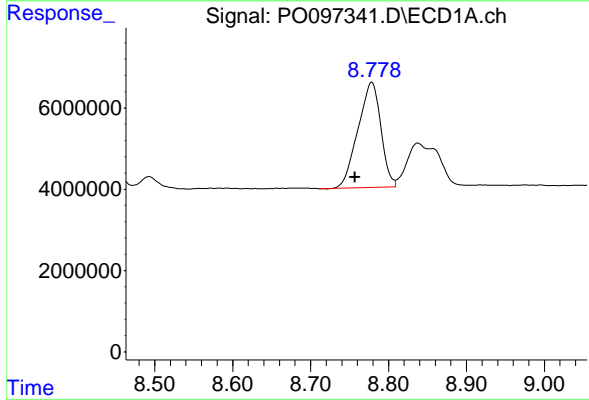
R.T.: 8.437 min
Delta R.T.: 0.008 min
Response: 80178864
Conc: 346.39 ng/ml

Instrument :
ECD_O
ClientSampleId :
TP-KMS



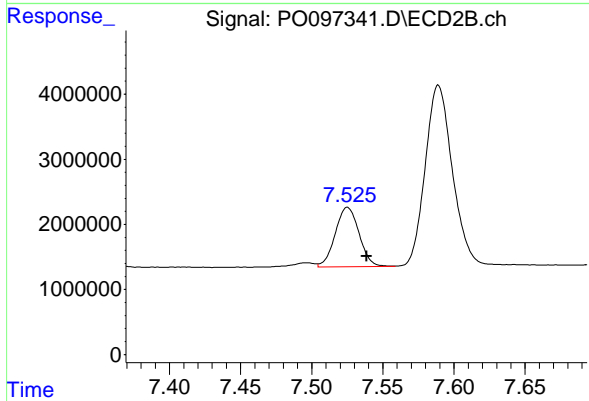
#37 AR-1262-2

R.T.: 6.998 min
Delta R.T.: -0.013 min
Response: 23092589
Conc: 284.72 ng/ml



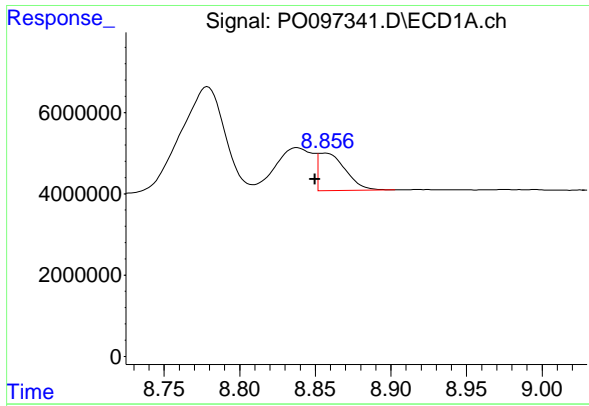
#38 AR-1262-3

R.T.: 8.779 min
Delta R.T.: 0.022 min
Response: 52777589
Conc: 316.42 ng/ml



#38 AR-1262-3

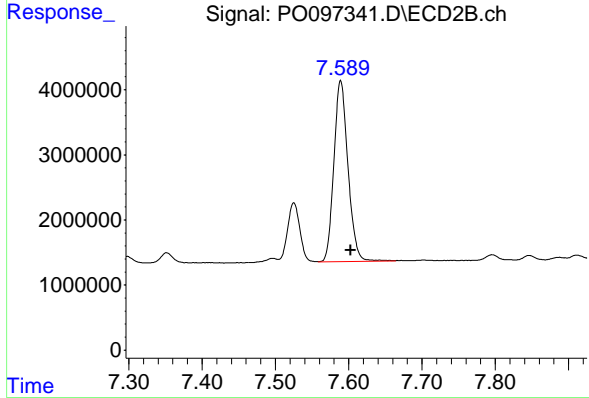
R.T.: 7.525 min
Delta R.T.: -0.014 min
Response: 10639535
Conc: 165.79 ng/ml



#39 AR-1262-4

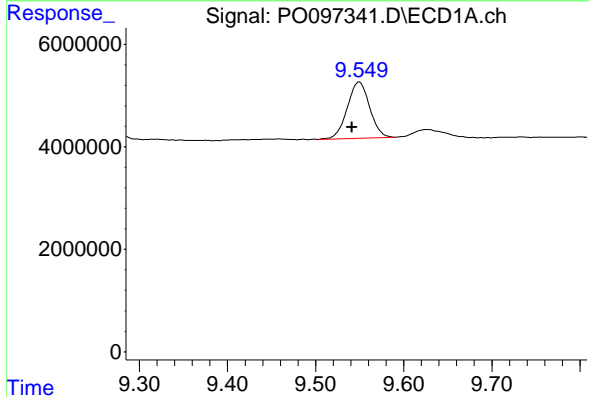
R.T.: 8.857 min
 Delta R.T.: 0.007 min
 Response: 11556555
 Conc: 158.51 ng/ml

Instrument :
 ECD_O
 ClientSampleId :
 TP-KMS



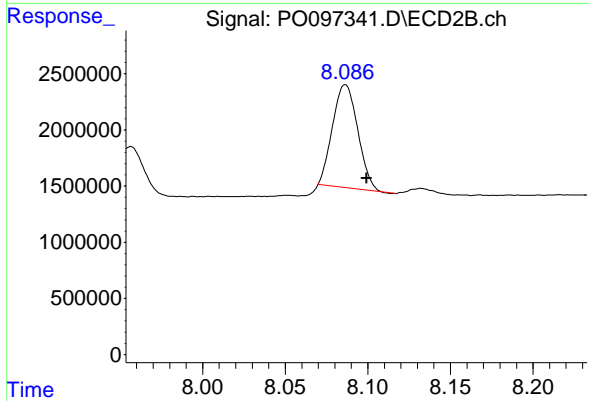
#39 AR-1262-4

R.T.: 7.589 min
 Delta R.T.: -0.014 min
 Response: 37205916
 Conc: 327.52 ng/ml



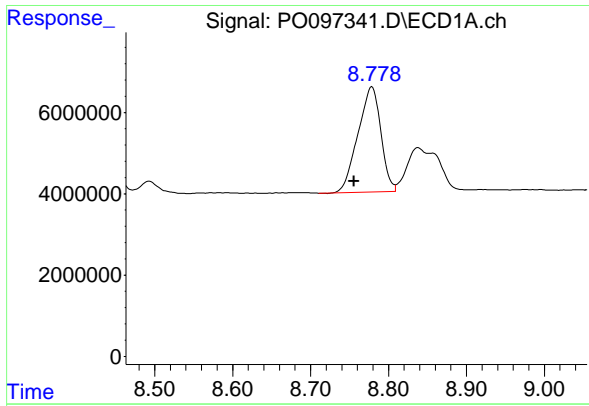
#40 AR-1262-5

R.T.: 9.550 min
 Delta R.T.: 0.008 min
 Response: 19345532
 Conc: 232.30 ng/ml



#40 AR-1262-5

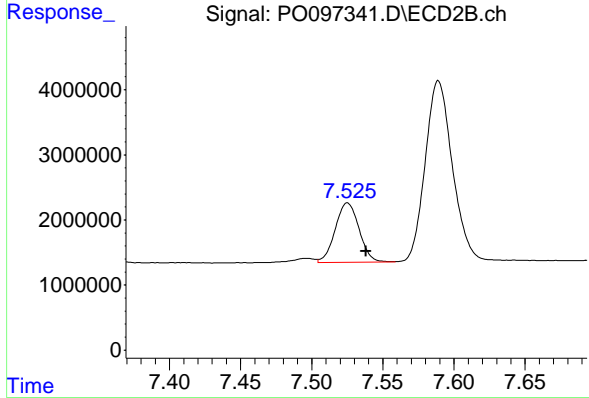
R.T.: 8.086 min
 Delta R.T.: -0.013 min
 Response: 9718508
 Conc: 185.05 ng/ml



#41 AR-1268-1

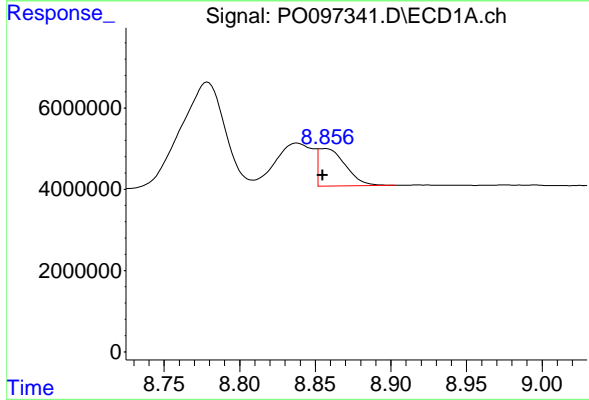
R.T.: 8.779 min
 Delta R.T.: 0.023 min
 Response: 52777589
 Conc: 171.69 ng/ml

Instrument :
 ECD_O
 ClientSampleId :
 TP-KMS



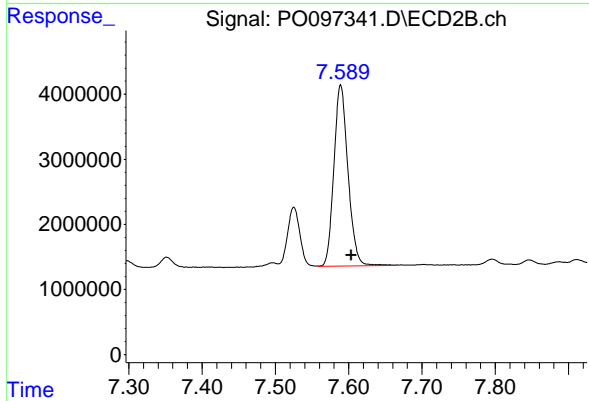
#41 AR-1268-1

R.T.: 7.525 min
 Delta R.T.: -0.013 min
 Response: 10639535
 Conc: 57.42 ng/ml



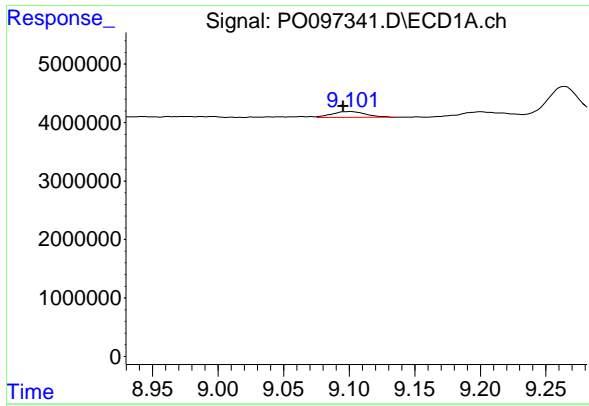
#42 AR-1268-2

R.T.: 8.857 min
 Delta R.T.: 0.002 min
 Response: 11556555
 Conc: 42.15 ng/ml



#42 AR-1268-2

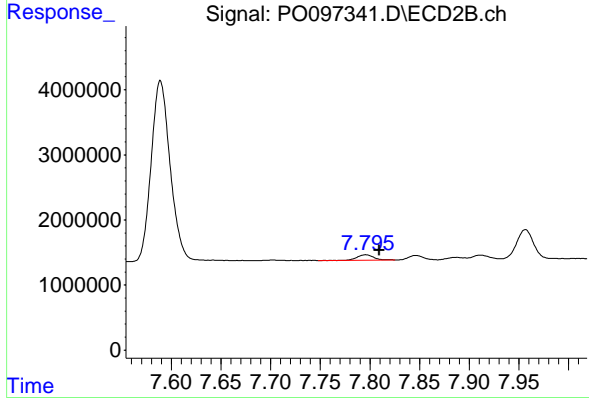
R.T.: 7.589 min
 Delta R.T.: -0.015 min
 Response: 37205916
 Conc: 221.88 ng/ml



#43 AR-1268-3

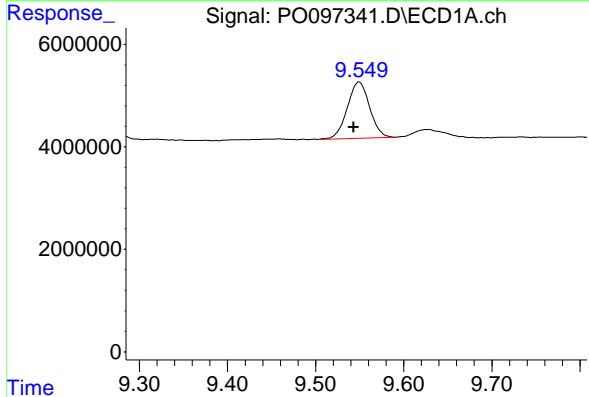
R.T.: 9.101 min
 Delta R.T.: 0.006 min
 Response: 1786361
 Conc: 6.99 ng/ml

Instrument :
 ECD_O
 ClientSampleId :
 TP-KMS



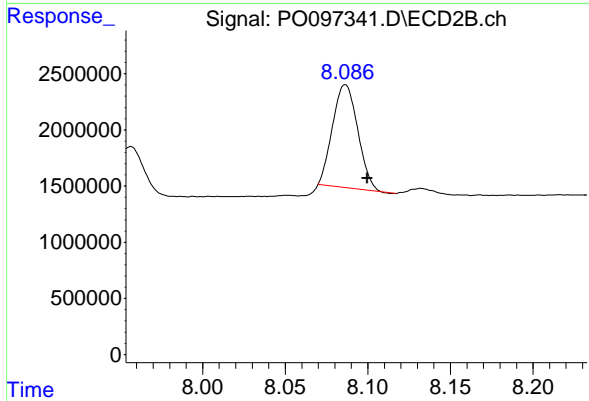
#43 AR-1268-3

R.T.: 7.796 min
 Delta R.T.: -0.013 min
 Response: 1039024
 Conc: 7.19 ng/ml



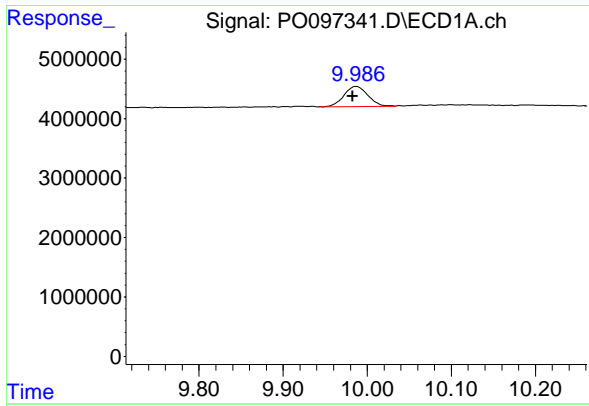
#44 AR-1268-4

R.T.: 9.550 min
 Delta R.T.: 0.006 min
 Response: 19345532
 Conc: 208.66 ng/ml



#44 AR-1268-4

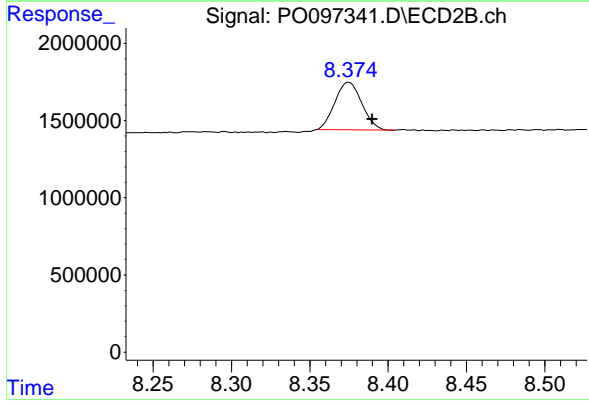
R.T.: 8.086 min
 Delta R.T.: -0.013 min
 Response: 9718508
 Conc: 163.14 ng/ml



#45 AR-1268-5

R.T.: 9.987 min
 Delta R.T.: 0.004 min
 Response: 6807499
 Conc: 8.43 ng/ml

Instrument :
 ECD_O
 ClientSampleId :
 TP-KMS



#45 AR-1268-5

R.T.: 8.375 min
 Delta R.T.: -0.015 min
 Response: 3668400
 Conc: 8.82 ng/ml