

Data Path : Z:\pestpcbsrv\HPCHEM1\ECD_0\Data\P0082123\
 Data File : P0097340.D
 Signal(s) : Signal #1: ECD1A.ch Signal #2: ECD2B.ch
 Acq On : 21 Aug 2023 19:20
 Operator : YP/AJ
 Sample : 04090-04
 Misc :
 ALS Vial : 28 Sample Multiplier: 1

Instrument :
 ECD_0
 ClientSampleId :
 TP-K

Integration File signal 1: autoint1.e
 Integration File signal 2: autoint2.e
 Quant Time: Aug 22 01:52:41 2023
 Quant Method : Z:\pestpcbsrv\HPCHEM1\ECD_0\methods\P0080723.M
 Quant Title : GC EXTRACTABLES
 QLast Update : Tue Aug 08 04:34:41 2023
 Response via : Initial Calibration
 Integrator: ChemStation

Volume Inj. : 2 µl
 Signal #1 Phase : ZB-MR1 Signal #2 Phase: ZB-MR2
 Signal #1 Info : 30Mx0.32mmx 0.50µ Signal #2 Info : 30M x 0.32mm x 0.25µm

Compound	RT#1	RT#2	Resp#1	Resp#2	ng/ml	ng/ml

System Monitoring Compounds						
1) SA Tetrachlo...	4.410	3.614	65837393	27074300	19.889	20.452
2) SA Decachlor...	10.345	8.627	37254558	18916277	17.025	16.350

Target Compounds

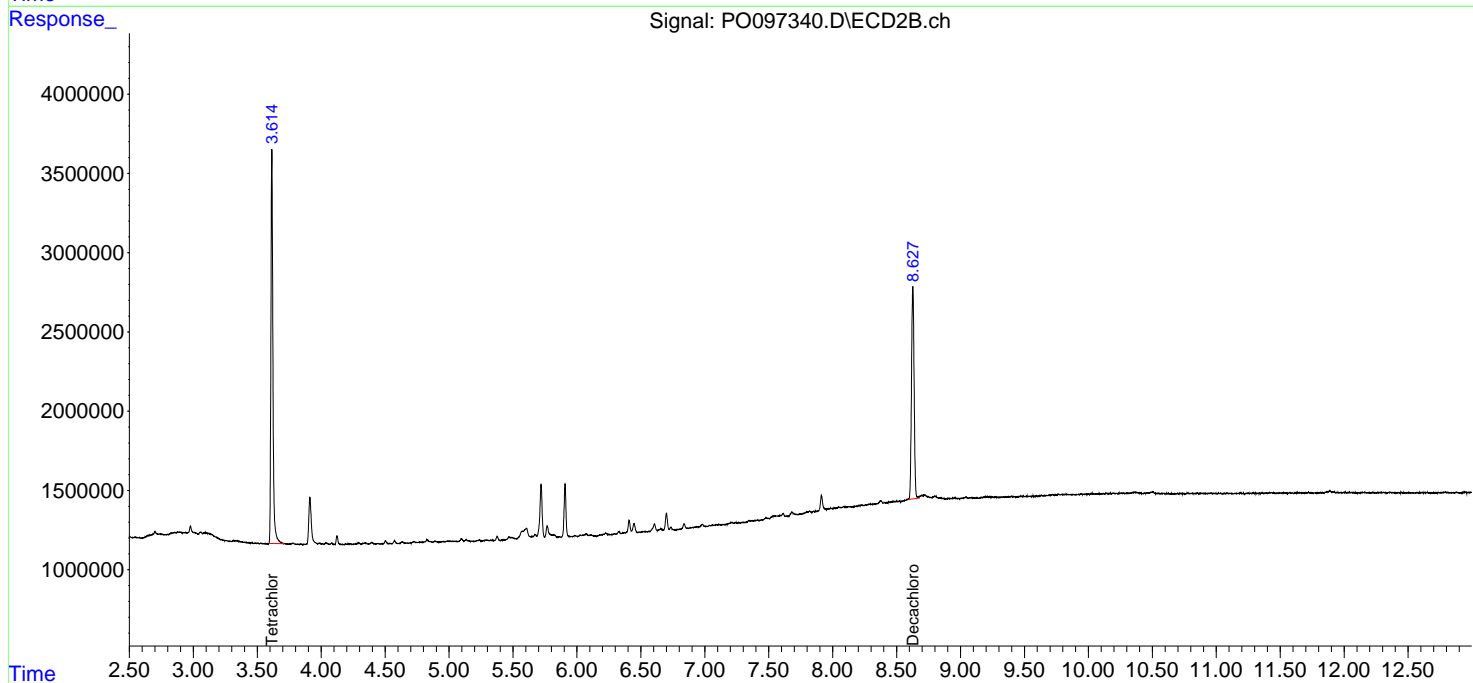
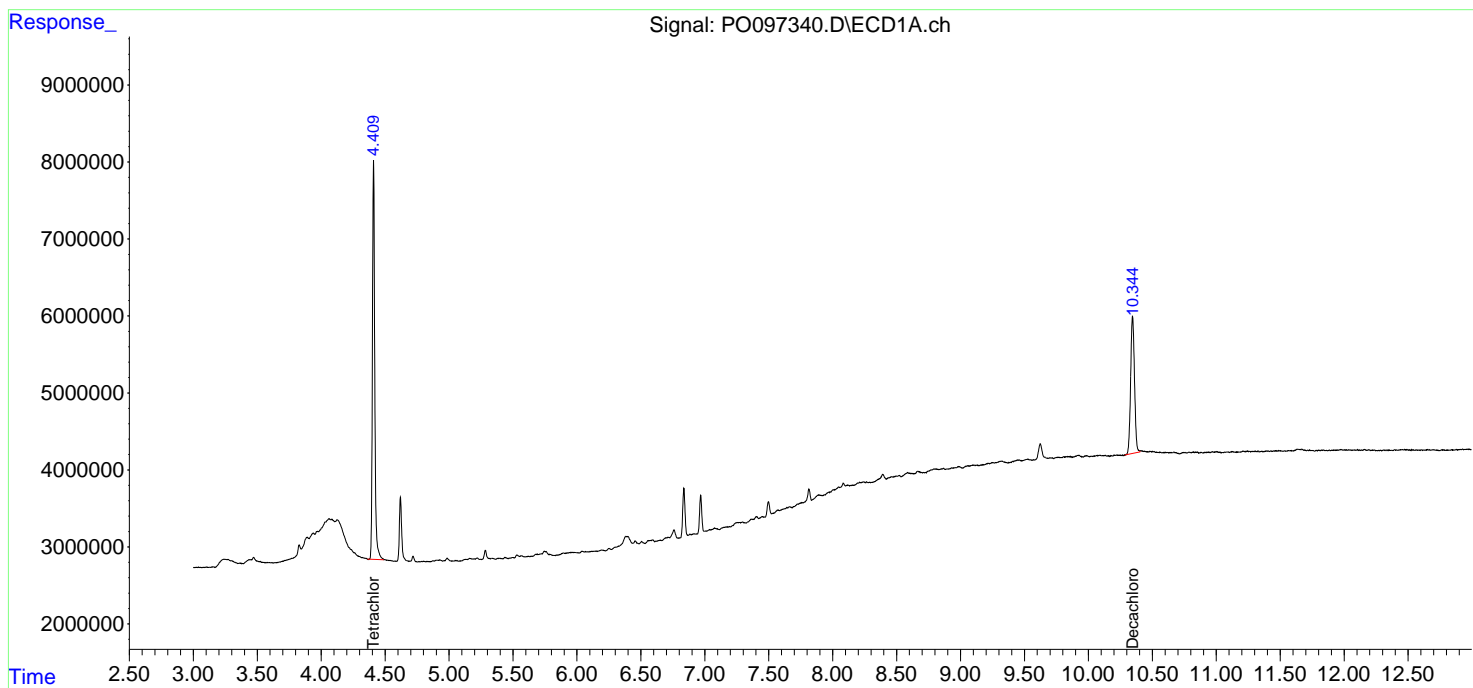
(f)=RT Delta > 1/2 Window (#)=Amounts differ by > 25% (m)=manual int.

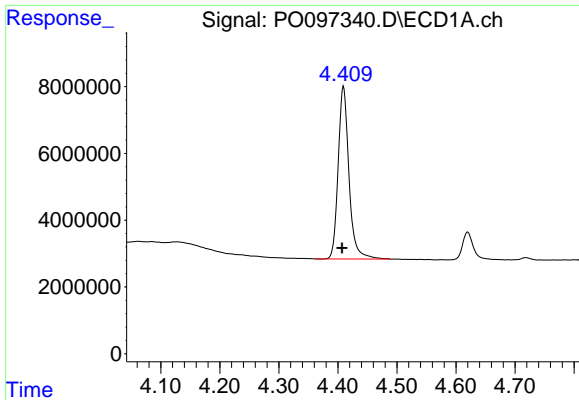
Data Path : Z:\pestpcbsrv\HPCHEM1\ECD_O\Data\P0082123\
Data File : P0097340.D
Signal(s) : Signal #1: ECD1A.ch Signal #2: ECD2B.ch
Acq On : 21 Aug 2023 19:20
Operator : YP/AJ
Sample : 04090-04
Misc :
ALS Vial : 28 Sample Multiplier: 1

Instrument :
ECD_O
ClientSampleId :
TP-K

Integration File signal 1: autoint1.e
Integration File signal 2: autoint2.e
Quant Time: Aug 22 01:52:41 2023
Quant Method : Z:\pestpcbsrv\HPCHEM1\ECD_O\methods\P0080723.M
Quant Title : GC EXTRACTABLES
QLast Update : Tue Aug 08 04:34:41 2023
Response via : Initial Calibration
Integrator: ChemStation

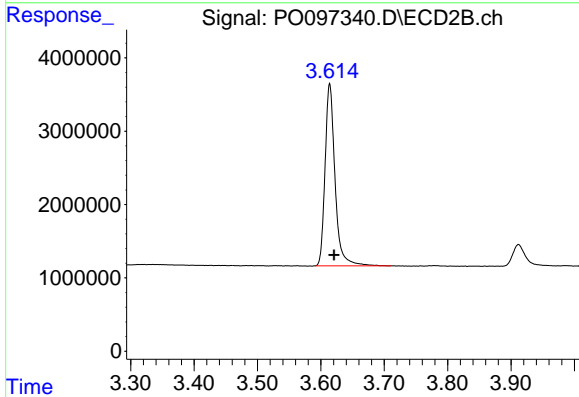
Volume Inj. : 2 µl
Signal #1 Phase : ZB-MR1 Signal #2 Phase: ZB-MR2
Signal #1 Info : 30Mx0.32mmx 0.50µ Signal #2 Info : 30M x 0.32mm x 0.25µm



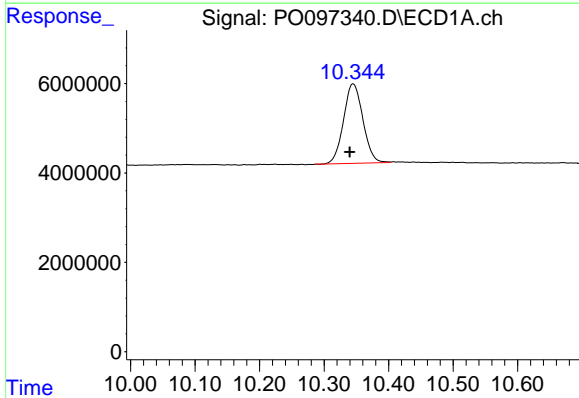


#1 Tetrachloro-m-xylene
 R.T.: 4.410 min
 Delta R.T.: 0.003 min
 Response: 65837393
 Conc: 19.89 ng/ml

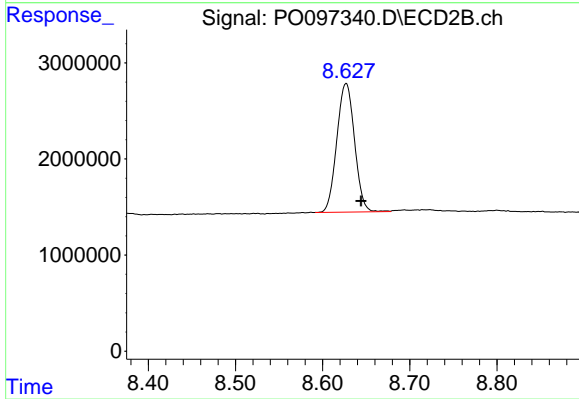
Instrument :
 ECD_O
 ClientSampleId :
 TP-K



#1 Tetrachloro-m-xylene
 R.T.: 3.614 min
 Delta R.T.: -0.007 min
 Response: 27074300
 Conc: 20.45 ng/ml



#2 Decachlorobiphenyl
 R.T.: 10.345 min
 Delta R.T.: 0.005 min
 Response: 37254558
 Conc: 17.03 ng/ml



#2 Decachlorobiphenyl
 R.T.: 8.627 min
 Delta R.T.: -0.017 min
 Response: 18916277
 Conc: 16.35 ng/ml