

Data Path : Z:\pestpcbsrv\HPCHEM1\ECD\_0\Data\P0082123\  
 Data File : P0097359.D  
 Signal(s) : Signal #1: ECD1A.ch Signal #2: ECD2B.ch  
 Acq On : 22 Aug 2023 01:11  
 Operator : YP/AJ  
 Sample : 04093-03  
 Misc :  
 ALS Vial : 42 Sample Multiplier: 1

**Instrument :**  
 ECD\_0  
**ClientSampleId :**  
 NEVINS-SB04-Z83-84

**Manual Integrations**  
**APPROVED**

Reviewed By :Yogesh Patel 08/22/2023  
 Supervised By :Ankita Jodhani 08/22/2023

Integration File signal 1: autoint1.e  
 Integration File signal 2: autoint2.e  
 Quant Time: Aug 22 01:58:13 2023  
 Quant Method : Z:\pestpcbsrv\HPCHEM1\ECD\_0\methods\P0080723.M  
 Quant Title : GC EXTRACTABLES  
 QLast Update : Tue Aug 08 04:34:41 2023  
 Response via : Initial Calibration  
 Integrator: ChemStation

Volume Inj. : 2 µl  
 Signal #1 Phase : ZB-MR1 Signal #2 Phase: ZB-MR2  
 Signal #1 Info : 30Mx0.32mmx 0.50µ Signal #2 Info : 30M x 0.32mm x 0.25µm

Compound	RT#1	RT#2	Resp#1	Resp#2	ng/ml	ng/ml
-----						
System Monitoring Compounds						
1) SA Tetrachlo...	4.408	3.614	36099396	19311927	10.906m	14.588m#
2) SA Decachlor...	10.344	8.625	49387326	34640889	22.570	29.942m#

Target Compounds

(f)=RT Delta > 1/2 Window (#)=Amounts differ by > 25% (m)=manual int.

Data Path : Z:\pestpcbsrv\HPCHEM1\ECD\_0\Data\P0082123\  
 Data File : P0097359.D  
 Signal(s) : Signal #1: ECD1A.ch Signal #2: ECD2B.ch  
 Acq On : 22 Aug 2023 01:11  
 Operator : YP/AJ  
 Sample : 04093-03  
 Misc :  
 ALS Vial : 42 Sample Multiplier: 1

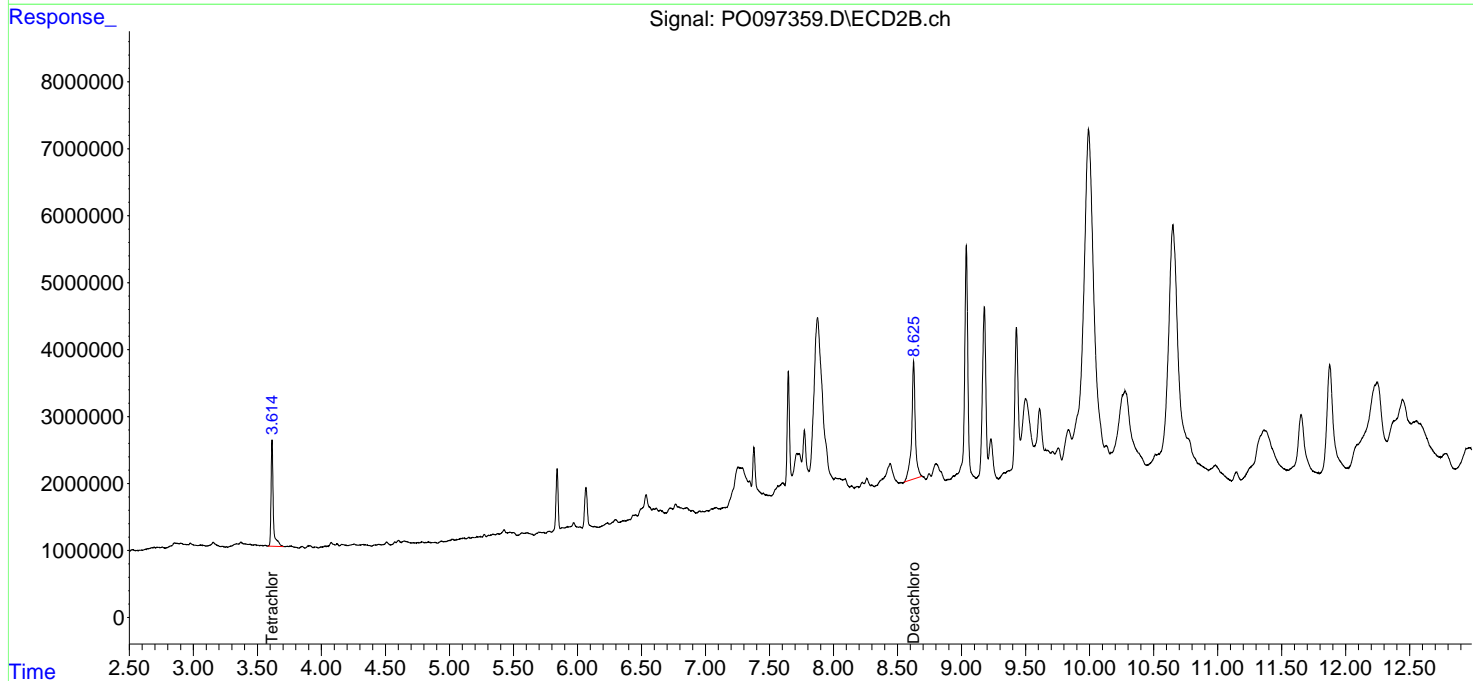
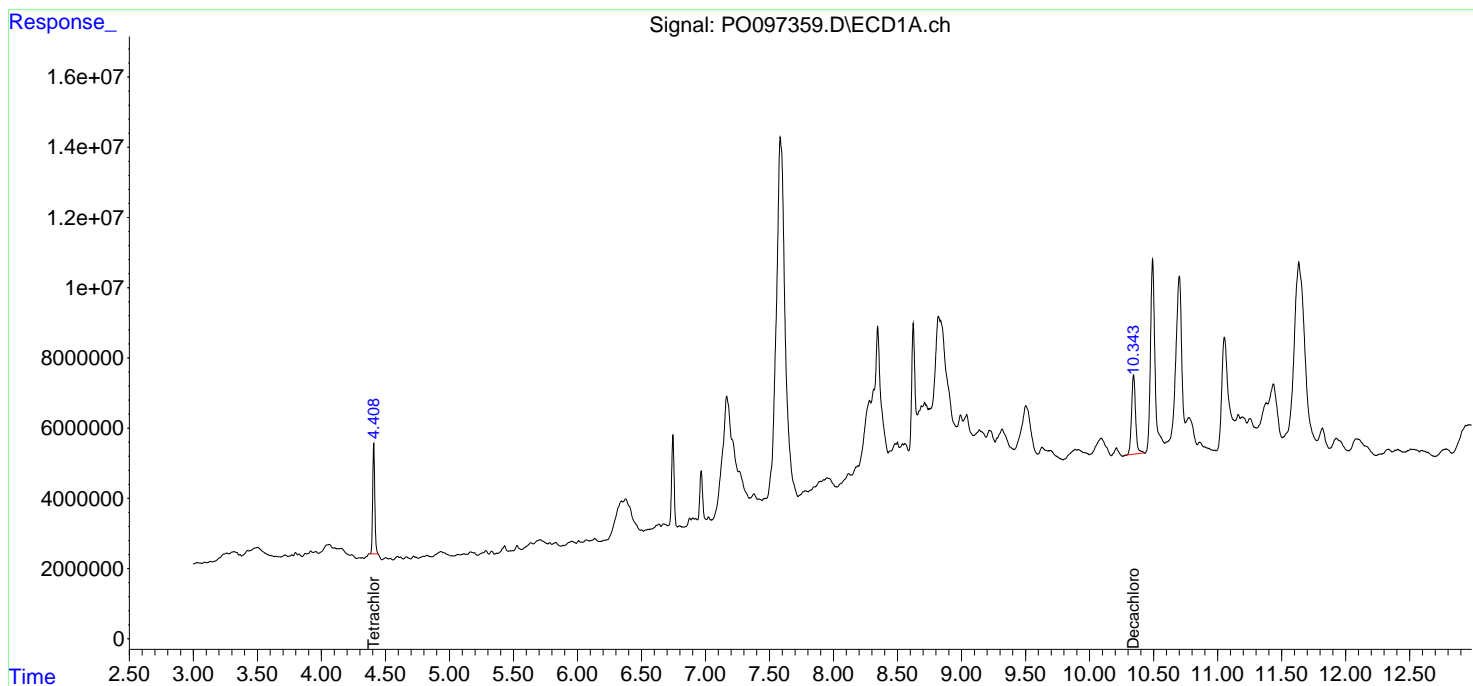
**Instrument :**  
 ECD\_0  
**ClientSampleId :**  
 NEVINS-SB04-Z83-84

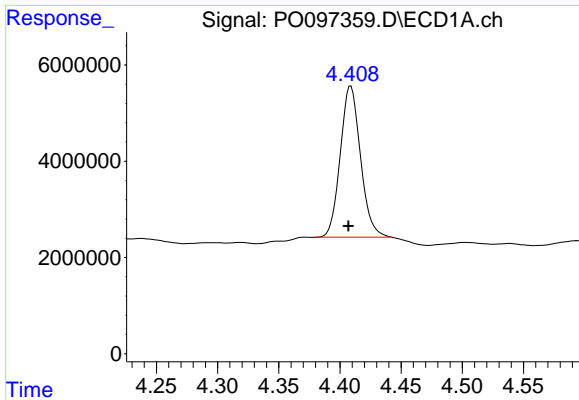
**Manual Integrations**  
**APPROVED**

Reviewed By :Yogesh Patel 08/22/2023  
 Supervised By :Ankita Jodhani 08/22/2023

Integration File signal 1: autoint1.e  
 Integration File signal 2: autoint2.e  
 Quant Time: Aug 22 01:58:13 2023  
 Quant Method : Z:\pestpcbsrv\HPCHEM1\ECD\_0\methods\P0080723.M  
 Quant Title : GC EXTRACTABLES  
 QLast Update : Tue Aug 08 04:34:41 2023  
 Response via : Initial Calibration  
 Integrator: ChemStation

Volume Inj. : 2 µl  
 Signal #1 Phase : ZB-MR1 Signal #2 Phase: ZB-MR2  
 Signal #1 Info : 30Mx0.32mmx 0.50µ Signal #2 Info : 30M x 0.32mm x 0.25µm





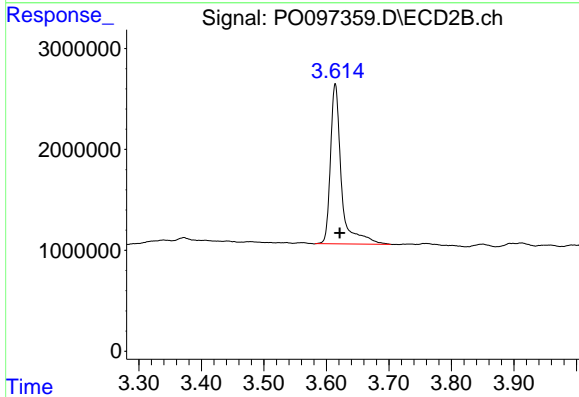
#1 Tetrachloro-m-xylene

R.T.: 4.408 min  
 Delta R.T.: 0.001 min  
 Response: 36099396  
 Conc: 10.91 ng/ml

Instrument :  
 ECD\_O  
 ClientSampleId :  
 NEVINS-SB04-Z83-84

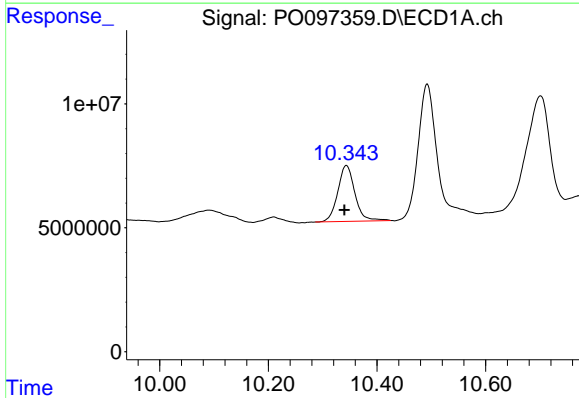
Manual Integrations  
 APPROVED

Reviewed By :Yogesh Patel 08/22/2023  
 Supervised By :Ankita Jodhani 08/22/2023



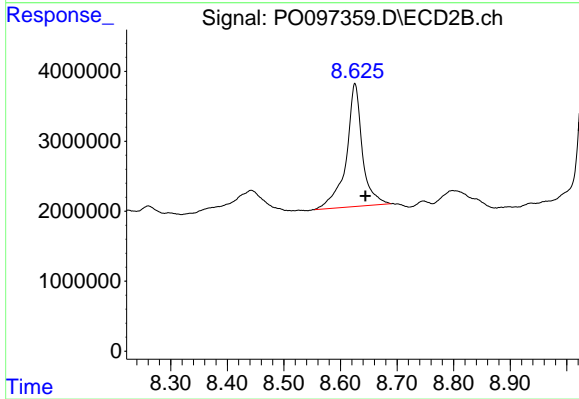
#1 Tetrachloro-m-xylene

R.T.: 3.614 min  
 Delta R.T.: -0.007 min  
 Response: 19311927  
 Conc: 14.59 ng/ml m



#2 Decachlorobiphenyl

R.T.: 10.344 min  
 Delta R.T.: 0.004 min  
 Response: 49387326  
 Conc: 22.57 ng/ml



#2 Decachlorobiphenyl

R.T.: 8.625 min  
 Delta R.T.: -0.019 min  
 Response: 34640889  
 Conc: 29.94 ng/ml m