

Data Path : Z:\pestpcbsrv\HPCHEM1\ECD\_O\Data\P0082124\  
 Data File : P0105697.D  
 Signal(s) : Signal #1: ECD1A.ch Signal #2: ECD2B.ch  
 Acq On : 21 Aug 2024 22:37  
 Operator : YP/AJ  
 Sample : AR1660CCC500  
 Misc :  
 ALS Vial : 3 Sample Multiplier: 1

**Instrument :**  
 ECD\_O  
**ClientSampleId :**  
 AR1660CCC500

Integration File signal 1: autoint1.e  
 Integration File signal 2: autoint2.e  
 Quant Time: Aug 22 03:18:31 2024  
 Quant Method : Z:\pestpcbsrv\HPCHEM1\ECD\_O\methods\P0081524.M  
 Quant Title : GC EXTRACTABLES  
 QLast Update : Thu Aug 15 11:44:23 2024  
 Response via : Initial Calibration  
 Integrator: ChemStation

Volume Inj. : 2 µl  
 Signal #1 Phase : ZB-MR1 Signal #2 Phase: ZB-MR2  
 Signal #1 Info : 30Mx0.32mmx 0.50µ Signal #2 Info : 30M x 0.32mm x 0.25µm

Compound	RT#1	RT#2	Resp#1	Resp#2	ng/ml	ng/ml
-----						
System Monitoring Compounds						
1) SA Tetrachlo...	4.454	3.723	446.8E6	130.2E6	47.787	51.028
2) SA Decachlor...	10.195	8.762	277.5E6	105.7E6	47.805	53.580
Target Compounds						
3) L1 AR-1016-1	5.617	4.814	152.2E6	45487125	488.893	521.587
4) L1 AR-1016-2	5.639	4.835	212.7E6	61002608	490.095	519.704
5) L1 AR-1016-3	5.701	5.011	128.9E6	31936677	485.002	516.610
6) L1 AR-1016-4	5.800	5.052	106.2E6	24490381	482.237	516.593
7) L1 AR-1016-5	6.093	5.267	103.3E6	29659676	494.613	467.055
31) L7 AR-1260-1	7.217	6.303	187.3E6	61704664	507.016	520.900
32) L7 AR-1260-2	7.473	6.489	209.0E6	77720559	483.881	529.738
33) L7 AR-1260-3	7.832	6.644	135.1E6	75096885	498.820	488.879
34) L7 AR-1260-4	8.057	7.117	158.5E6	52467960	497.695	534.592
35) L7 AR-1260-5	8.377	7.356	289.9E6	127.3E6	465.370	526.117

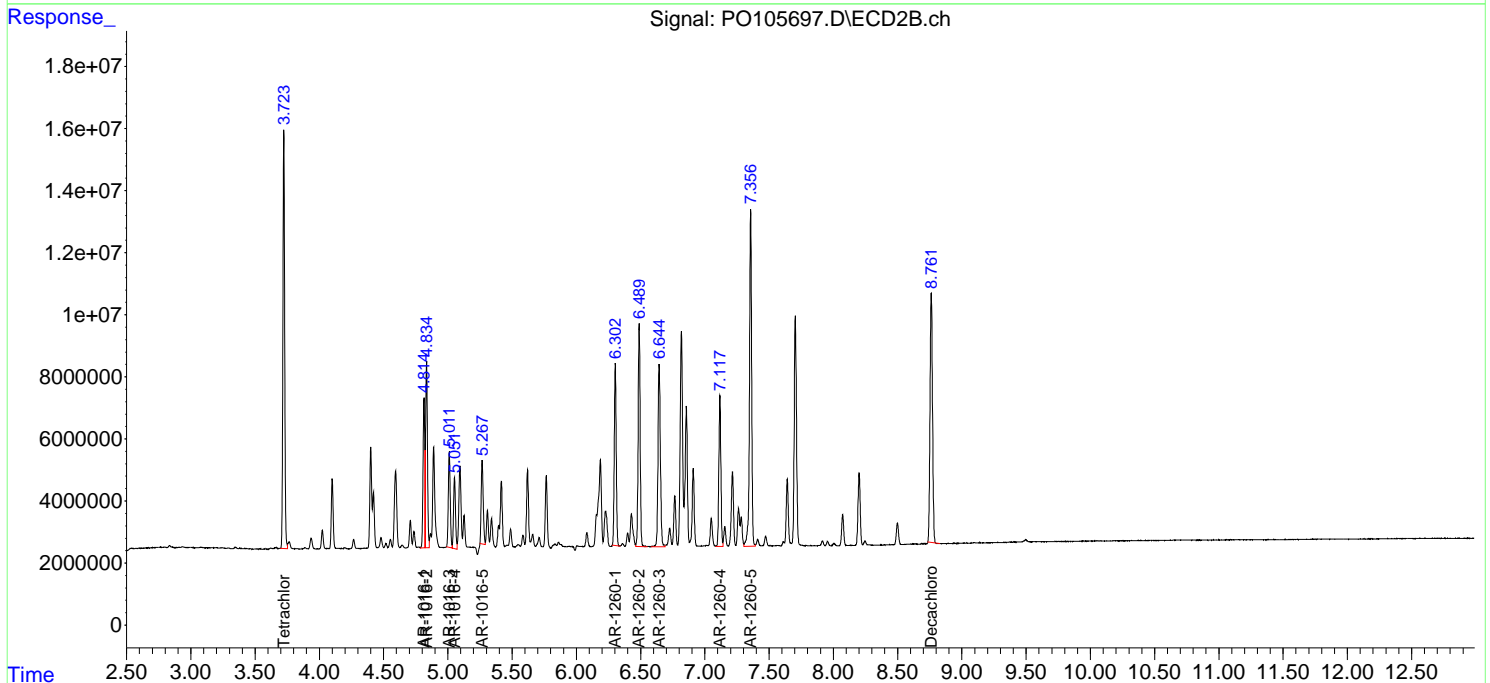
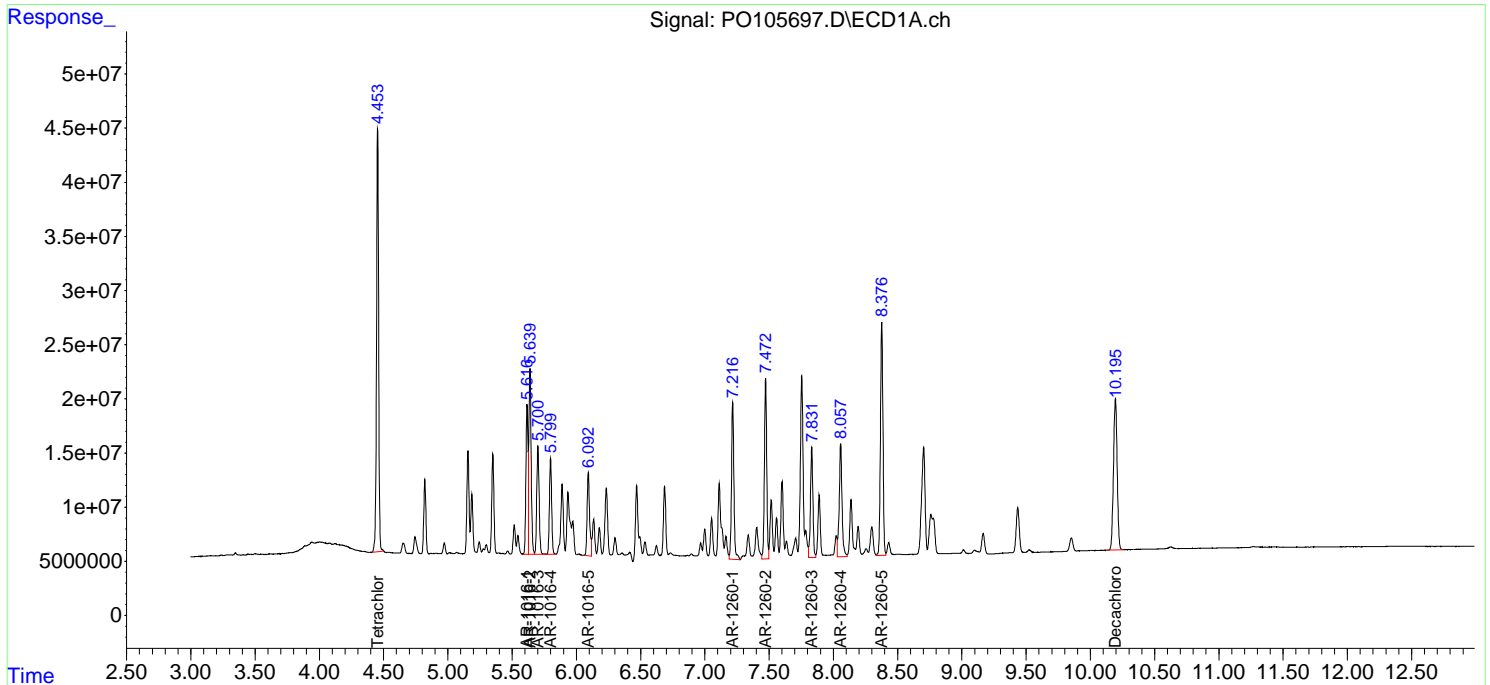
(f)=RT Delta > 1/2 Window (#)=Amounts differ by > 25% (m)=manual int.

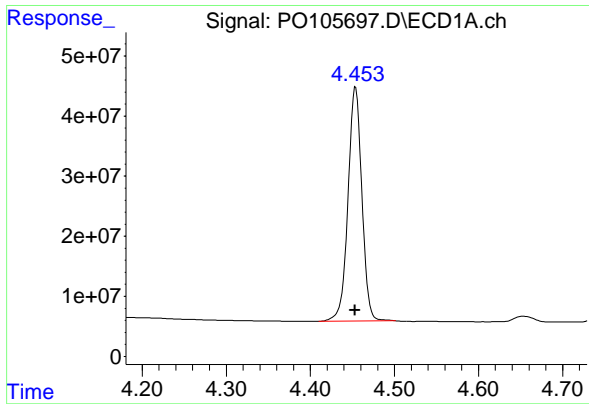
Data Path : Z:\pestpcbsrv\HPCHEM1\ECD\_O\Data\PO082124\  
 Data File : PO105697.D  
 Signal(s) : Signal #1: ECD1A.ch Signal #2: ECD2B.ch  
 Acq On : 21 Aug 2024 22:37  
 Operator : YP/AJ  
 Sample : AR1660CCC500  
 Misc :  
 ALS Vial : 3 Sample Multiplier: 1

**Instrument :**  
 ECD\_O  
**ClientSampleId :**  
 AR1660CCC500

Integration File signal 1: autoint1.e  
 Integration File signal 2: autoint2.e  
 Quant Time: Aug 22 03:18:31 2024  
 Quant Method : Z:\pestpcbsrv\HPCHEM1\ECD\_O\methods\PO081524.M  
 Quant Title : GC EXTRACTABLES  
 QLast Update : Thu Aug 15 11:44:23 2024  
 Response via : Initial Calibration  
 Integrator: ChemStation

Volume Inj. : 2 µl  
 Signal #1 Phase : ZB-MR1 Signal #2 Phase: ZB-MR2  
 Signal #1 Info : 30Mx0.32mmx 0.50µm Signal #2 Info : 30M x 0.32mm x 0.25µm

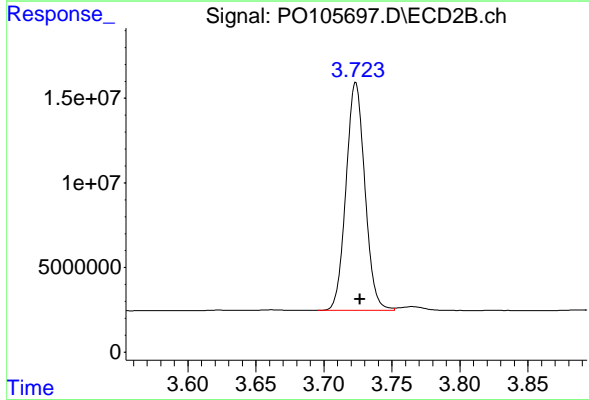




#1 Tetrachloro-m-xylene

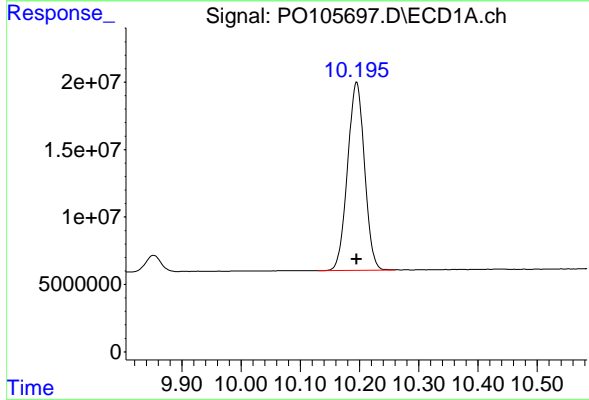
R.T.: 4.454 min  
 Delta R.T.: 0.000 min  
 Response: 446767386  
 Conc: 47.79 ng/ml

Instrument :  
 ECD\_O  
 ClientSampleId :  
 AR1660CCC500



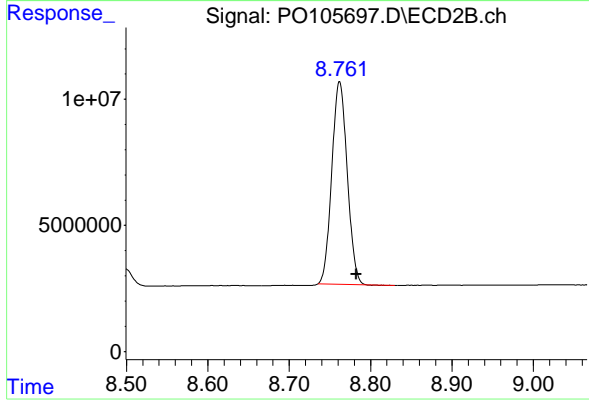
#1 Tetrachloro-m-xylene

R.T.: 3.723 min  
 Delta R.T.: -0.003 min  
 Response: 130150311  
 Conc: 51.03 ng/ml



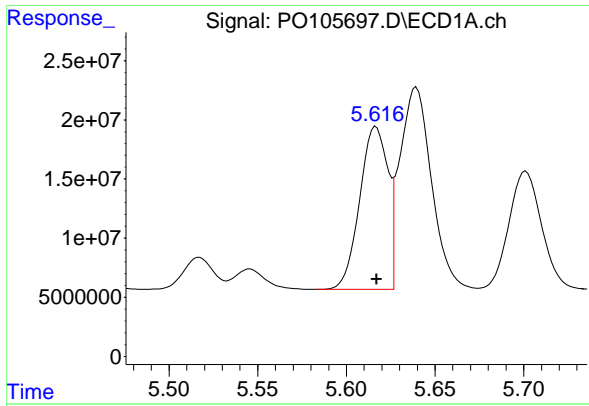
#2 Decachlorobiphenyl

R.T.: 10.195 min  
 Delta R.T.: 0.000 min  
 Response: 277492544  
 Conc: 47.80 ng/ml



#2 Decachlorobiphenyl

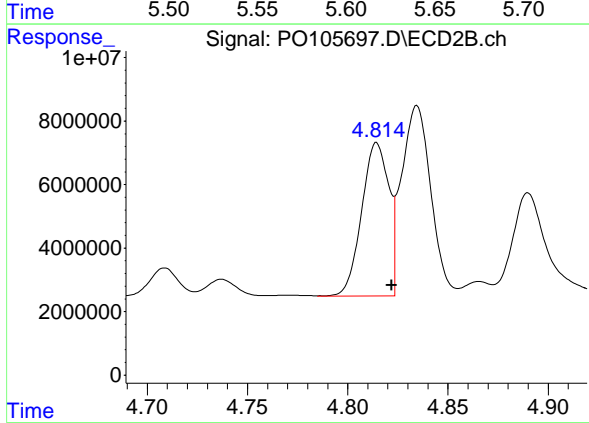
R.T.: 8.762 min  
 Delta R.T.: -0.020 min  
 Response: 105738465  
 Conc: 53.58 ng/ml



#3 AR-1016-1

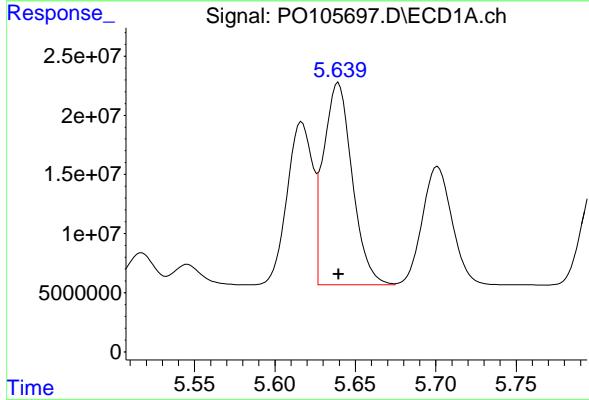
R.T.: 5.617 min  
 Delta R.T.: 0.000 min  
 Response: 152170847  
 Conc: 488.89 ng/ml

Instrument :  
 ECD\_O  
 ClientSampleId :  
 AR1660CCC500



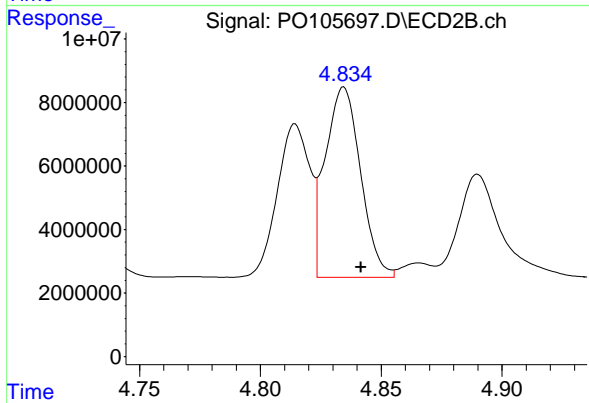
#3 AR-1016-1

R.T.: 4.814 min  
 Delta R.T.: -0.008 min  
 Response: 45487125  
 Conc: 521.59 ng/ml



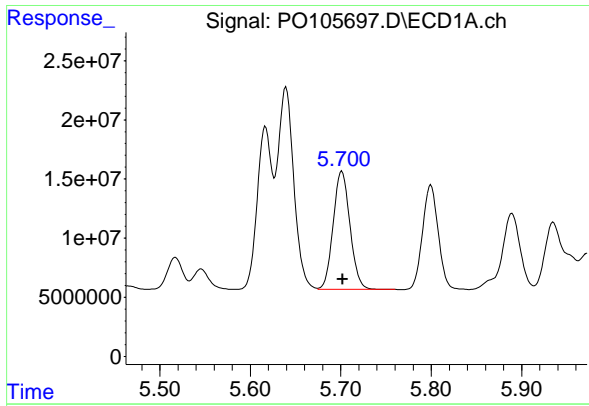
#4 AR-1016-2

R.T.: 5.639 min  
 Delta R.T.: 0.000 min  
 Response: 212681374  
 Conc: 490.10 ng/ml



#4 AR-1016-2

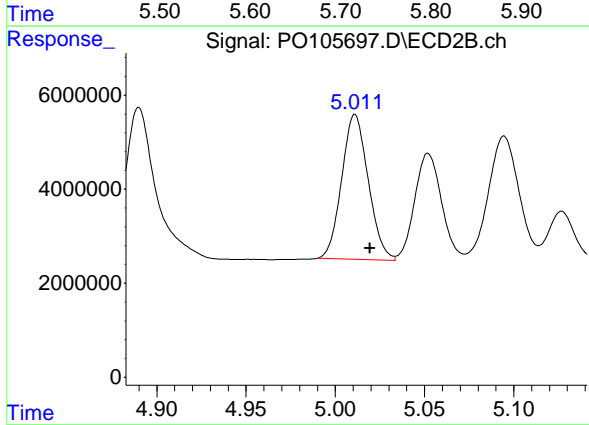
R.T.: 4.835 min  
 Delta R.T.: -0.007 min  
 Response: 61002608  
 Conc: 519.70 ng/ml



#5 AR-1016-3

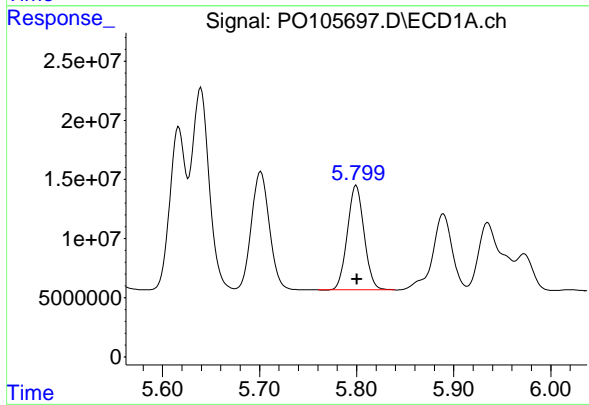
R.T.: 5.701 min  
 Delta R.T.: -0.001 min  
 Response: 128942727  
 Conc: 485.00 ng/ml

Instrument :  
 ECD\_O  
 ClientSampleId :  
 AR1660CCC500



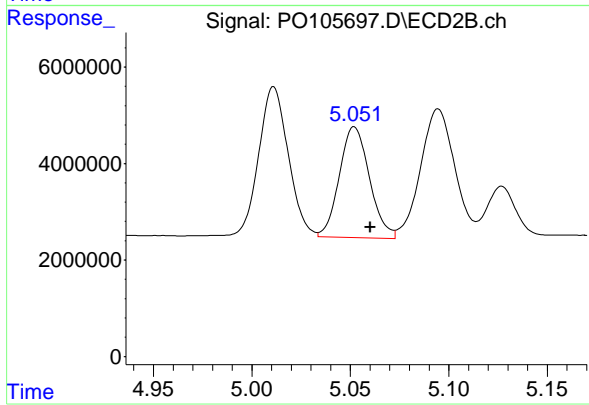
#5 AR-1016-3

R.T.: 5.011 min  
 Delta R.T.: -0.008 min  
 Response: 31936677  
 Conc: 516.61 ng/ml



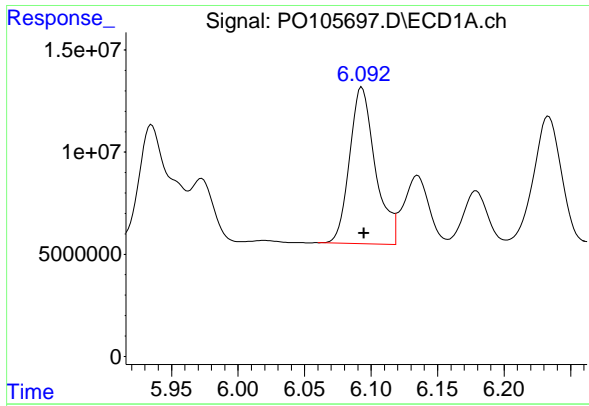
#6 AR-1016-4

R.T.: 5.800 min  
 Delta R.T.: 0.000 min  
 Response: 106153740  
 Conc: 482.24 ng/ml



#6 AR-1016-4

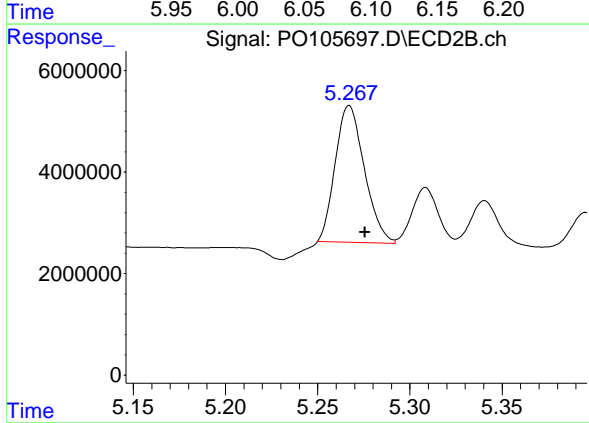
R.T.: 5.052 min  
 Delta R.T.: -0.008 min  
 Response: 24490381  
 Conc: 516.59 ng/ml



#7 AR-1016-5

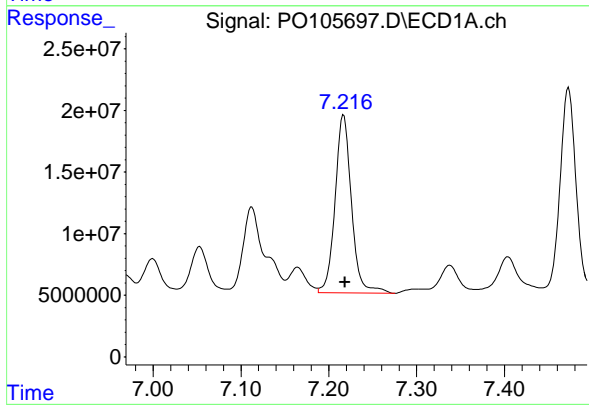
R.T.: 6.093 min  
 Delta R.T.: -0.001 min  
 Response: 103275198  
 Conc: 494.61 ng/ml

Instrument :  
 ECD\_O  
 ClientSampleId :  
 AR1660CCC500



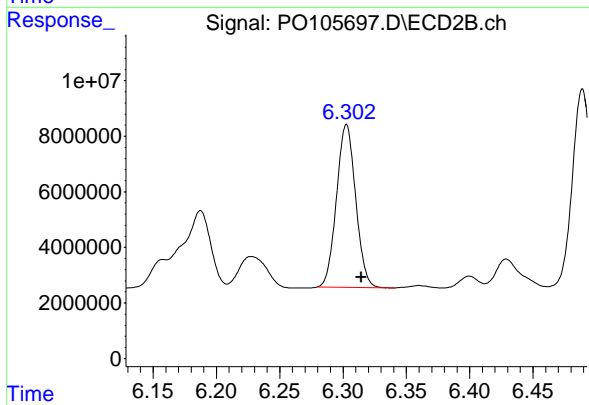
#7 AR-1016-5

R.T.: 5.267 min  
 Delta R.T.: -0.009 min  
 Response: 29659676  
 Conc: 467.05 ng/ml



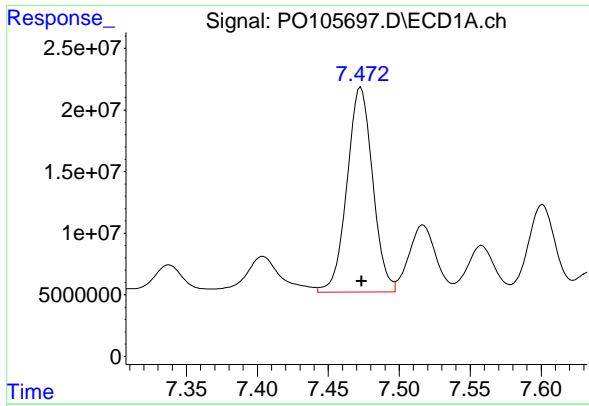
#31 AR-1260-1

R.T.: 7.217 min  
 Delta R.T.: -0.002 min  
 Response: 187307359  
 Conc: 507.02 ng/ml



#31 AR-1260-1

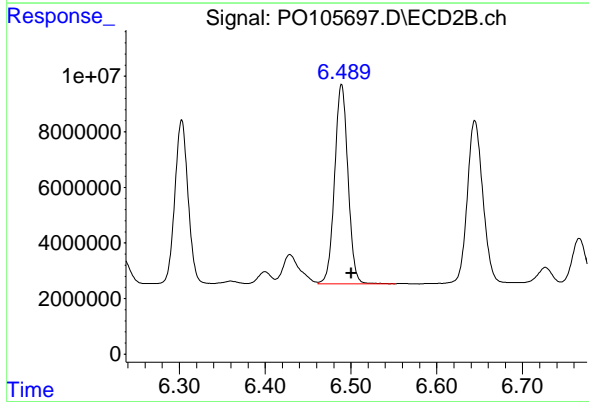
R.T.: 6.303 min  
 Delta R.T.: -0.012 min  
 Response: 61704664  
 Conc: 520.90 ng/ml



#32 AR-1260-2

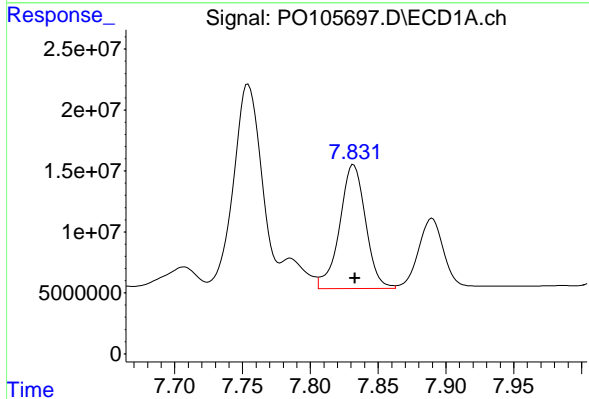
R.T.: 7.473 min  
 Delta R.T.: 0.000 min  
 Response: 209026062  
 Conc: 483.88 ng/ml

Instrument :  
 ECD\_O  
 ClientSampleId :  
 AR1660CCC500



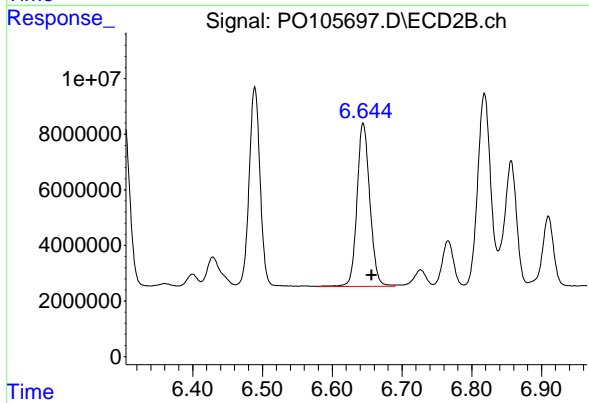
#32 AR-1260-2

R.T.: 6.489 min  
 Delta R.T.: -0.011 min  
 Response: 77720559  
 Conc: 529.74 ng/ml



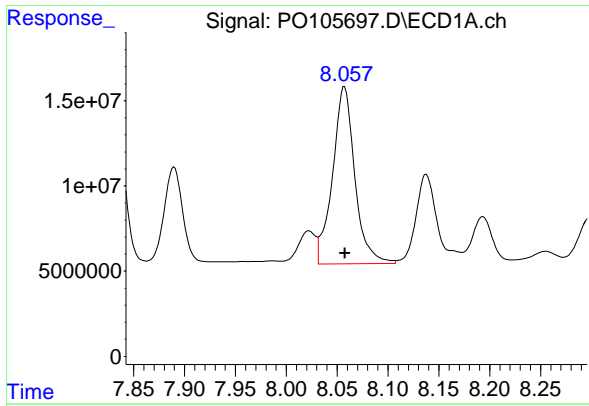
#33 AR-1260-3

R.T.: 7.832 min  
 Delta R.T.: 0.000 min  
 Response: 135100197  
 Conc: 498.82 ng/ml



#33 AR-1260-3

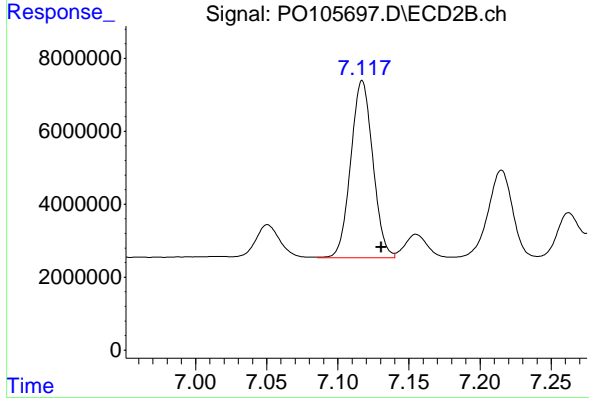
R.T.: 6.644 min  
 Delta R.T.: -0.012 min  
 Response: 75096885  
 Conc: 488.88 ng/ml



#34 AR-1260-4

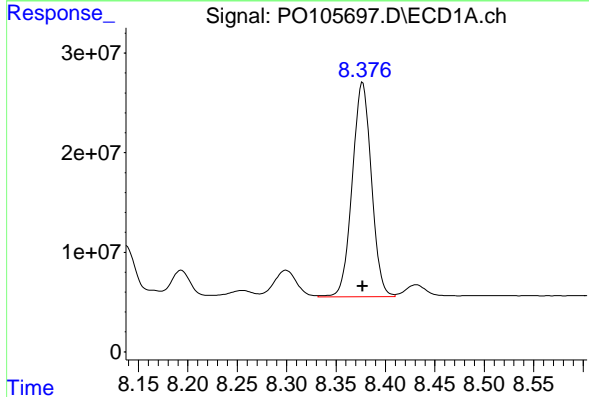
R.T.: 8.057 min  
 Delta R.T.: 0.000 min  
 Response: 158459716  
 Conc: 497.69 ng/ml

Instrument :  
 ECD\_O  
 ClientSampleId :  
 AR1660CCC500



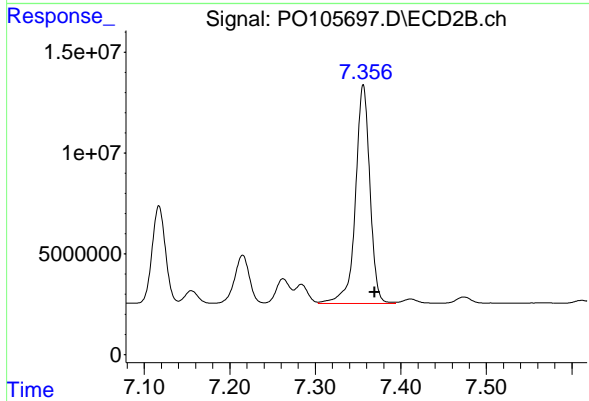
#34 AR-1260-4

R.T.: 7.117 min  
 Delta R.T.: -0.014 min  
 Response: 52467960  
 Conc: 534.59 ng/ml



#35 AR-1260-5

R.T.: 8.377 min  
 Delta R.T.: 0.000 min  
 Response: 289885280  
 Conc: 465.37 ng/ml



#35 AR-1260-5

R.T.: 7.356 min  
 Delta R.T.: -0.013 min  
 Response: 127282630  
 Conc: 526.12 ng/ml