

Data Path : Z:\pestpcbsrv\HPCHEM1\ECD_0\Data\P0082125\
 Data File : P0113117.D
 Signal(s) : Signal #1: ECD1A.ch Signal #2: ECD2B.ch
 Acq On : 21 Aug 2025 09:05
 Operator : YP/AJ
 Sample : AR1660CCC500
 Misc :
 ALS Vial : 3 Sample Multiplier: 1

Instrument :
 ECD_0
 ClientSampleId :
 AR1660CCC500

Integration File signal 1: autoint1.e
 Integration File signal 2: autoint2.e
 Quant Time: Aug 21 11:32:34 2025
 Quant Method : Z:\pestpcbsrv\HPCHEM1\ECD_0\methods\P0081825.M
 Quant Title : GC EXTRACTABLES
 QLast Update : Tue Aug 19 06:08:32 2025
 Response via : Initial Calibration
 Integrator: ChemStation

Volume Inj. : 2 µl
 Signal #1 Phase : ZB-MR1 Signal #2 Phase: ZB-MR2
 Signal #1 Info : 30Mx0.32mmx 0.50µ Signal #2 Info : 30M x 0.32mm x 0.25µm

Compound	RT#1	RT#2	Resp#1	Resp#2	ng/ml	ng/ml

System Monitoring Compounds						
1) SA Tetrachlo...	3.662	3.654	448.2E6	260.8E6	54.746	51.538
2) SA Decachlor...	8.680	8.626	355.5E6	96801540	51.282	51.087
Target Compounds						
3) L1 AR-1016-1	4.747	4.728	147.5E6	87101839	552.427	510.640
4) L1 AR-1016-2	4.765	4.746	221.8E6	130.6E6	552.441	506.952
5) L1 AR-1016-3	4.822	4.920	142.3E6	69077533	557.875	494.774
6) L1 AR-1016-4	4.942	4.963	111.4E6	56422466	510.678	483.487
7) L1 AR-1016-5	5.198	5.175	119.5E6	73423229	539.087	515.142
31) L7 AR-1260-1	6.235	6.202	239.7E6	124.4E6	537.519	487.738
32) L7 AR-1260-2	6.424	6.391	369.1E6	167.9E6	537.475	485.745
33) L7 AR-1260-3	6.790	6.542	334.7E6	137.1E6	542.037	460.999
34) L7 AR-1260-4	7.049	7.011	241.4E6	98982024	538.931	477.598
35) L7 AR-1260-5	7.291	7.253	656.4E6	220.2E6	542.163	470.110

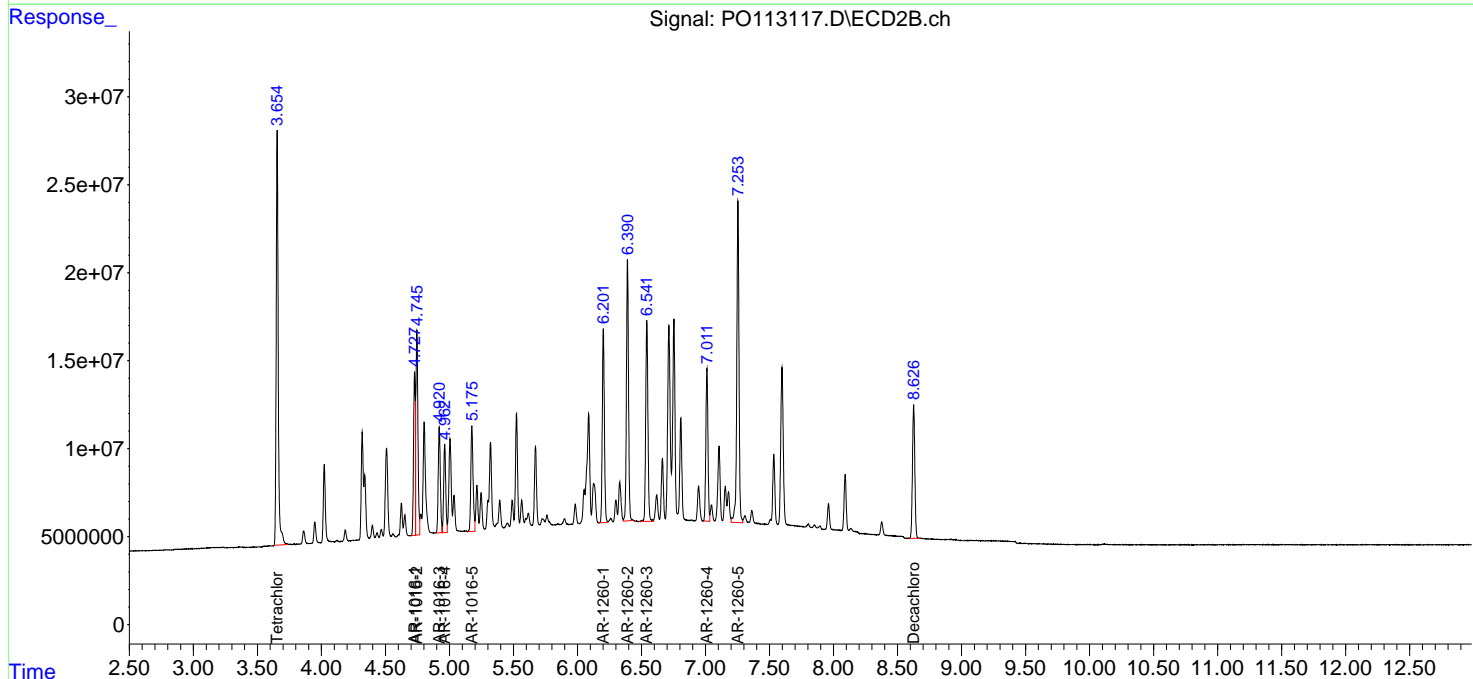
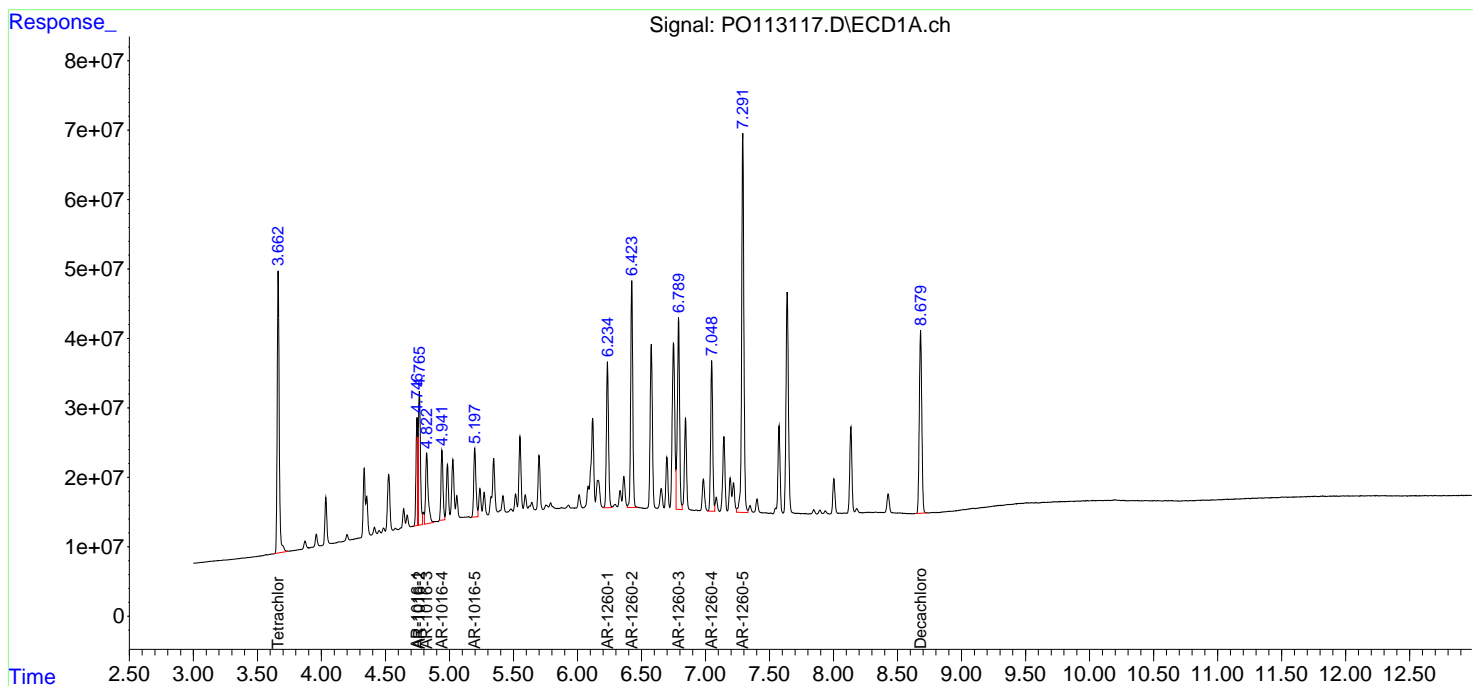
(f)=RT Delta > 1/2 Window (#)=Amounts differ by > 25% (m)=manual int.

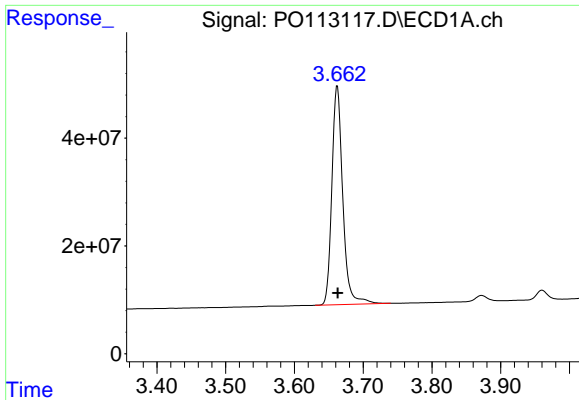
Data Path : Z:\pestpcbsrv\HPCHEM1\ECD_O\Data\P0082125\
 Data File : P0113117.D
 Signal(s) : Signal #1: ECD1A.ch Signal #2: ECD2B.ch
 Acq On : 21 Aug 2025 09:05
 Operator : YP/AJ
 Sample : AR1660CCC500
 Misc :
 ALS Vial : 3 Sample Multiplier: 1

Instrument :
 ECD_O
 ClientSampleId :
 AR1660CCC500

Integration File signal 1: autoint1.e
 Integration File signal 2: autoint2.e
 Quant Time: Aug 21 11:32:34 2025
 Quant Method : Z:\pestpcbsrv\HPCHEM1\ECD_O\methods\P0081825.M
 Quant Title : GC EXTRACTABLES
 QLast Update : Tue Aug 19 06:08:32 2025
 Response via : Initial Calibration
 Integrator: ChemStation

Volume Inj. : 2 µl
 Signal #1 Phase : ZB-MR1 Signal #2 Phase: ZB-MR2
 Signal #1 Info : 30Mx0.32mmx 0.50µ Signal #2 Info : 30M x 0.32mm x 0.25µm

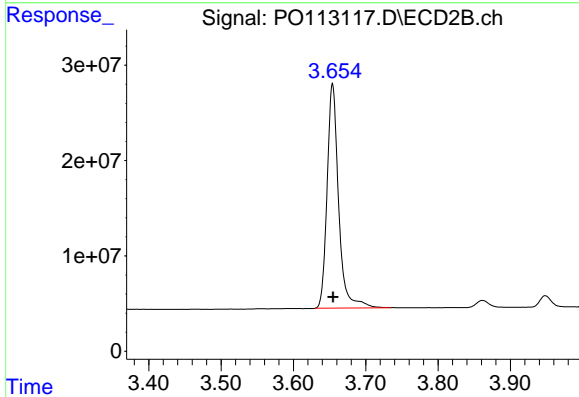




#1 Tetrachloro-m-xylene

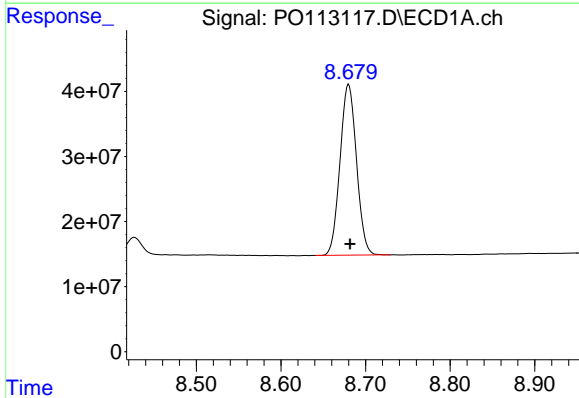
R.T.: 3.662 min
 Delta R.T.: 0.000 min
 Response: 448185314
 Conc: 54.75 ng/ml

Instrument :
 ECD_O
 ClientSampleId :
 AR1660CCC500



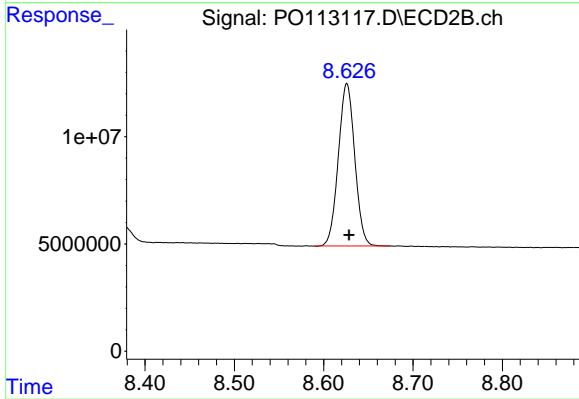
#1 Tetrachloro-m-xylene

R.T.: 3.654 min
 Delta R.T.: 0.000 min
 Response: 260814688
 Conc: 51.54 ng/ml



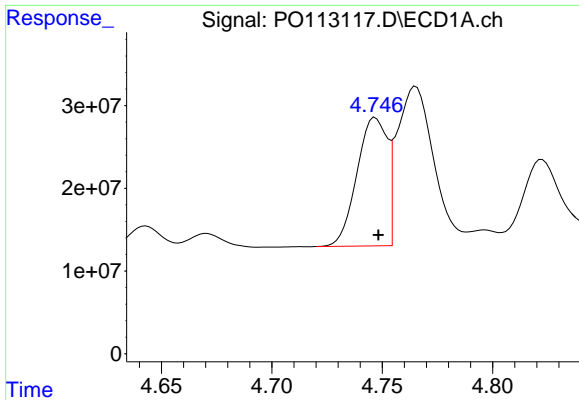
#2 Decachlorobiphenyl

R.T.: 8.680 min
 Delta R.T.: -0.001 min
 Response: 355460092
 Conc: 51.28 ng/ml



#2 Decachlorobiphenyl

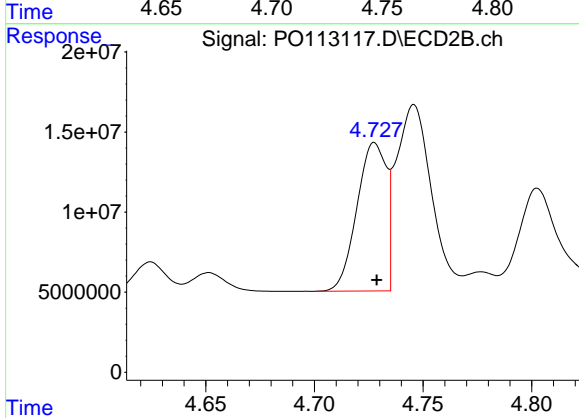
R.T.: 8.626 min
 Delta R.T.: -0.002 min
 Response: 96801540
 Conc: 51.09 ng/ml



#3 AR-1016-1

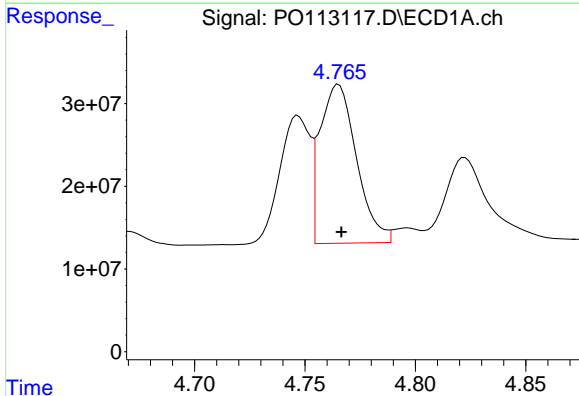
R.T.: 4.747 min
 Delta R.T.: -0.001 min
 Response: 147489732
 Conc: 552.43 ng/ml

Instrument :
 ECD_O
 ClientSampleId :
 AR1660CCC500



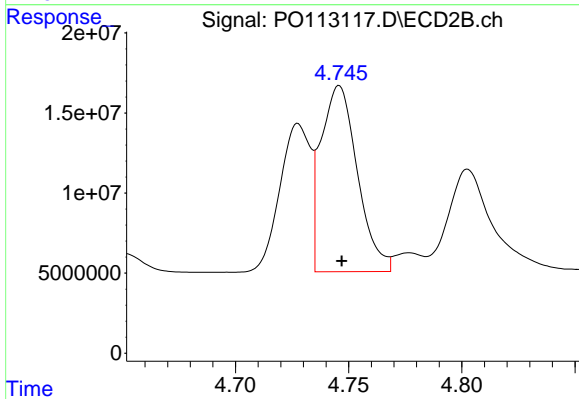
#3 AR-1016-1

R.T.: 4.728 min
 Delta R.T.: -0.001 min
 Response: 87101839
 Conc: 510.64 ng/ml



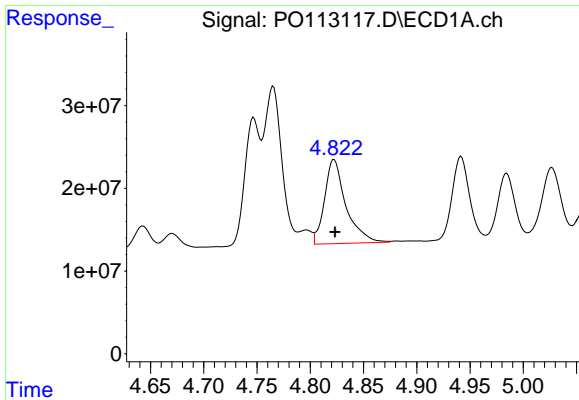
#4 AR-1016-2

R.T.: 4.765 min
 Delta R.T.: -0.001 min
 Response: 221767070
 Conc: 552.44 ng/ml



#4 AR-1016-2

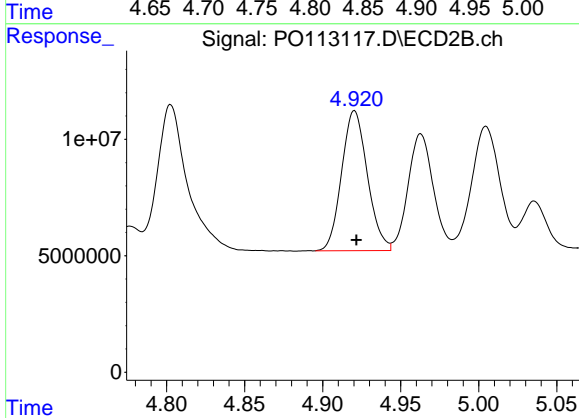
R.T.: 4.746 min
 Delta R.T.: -0.001 min
 Response: 130619286
 Conc: 506.95 ng/ml



#5 AR-1016-3

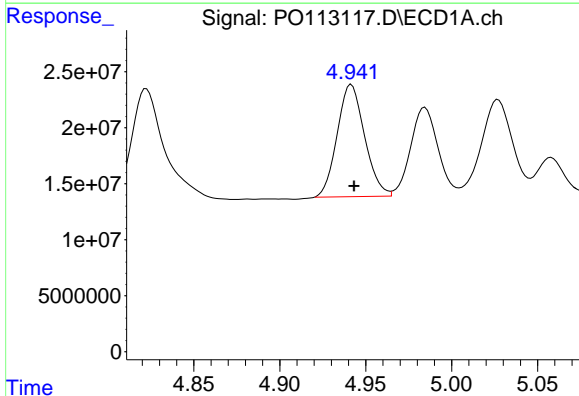
R.T.: 4.822 min
 Delta R.T.: 0.000 min
 Response: 142270617
 Conc: 557.87 ng/ml

Instrument :
 ECD_O
 ClientSampleId :
 AR1660CCC500



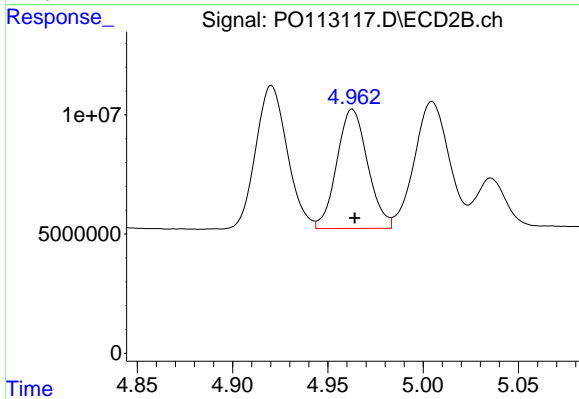
#5 AR-1016-3

R.T.: 4.920 min
 Delta R.T.: -0.001 min
 Response: 69077533
 Conc: 494.77 ng/ml



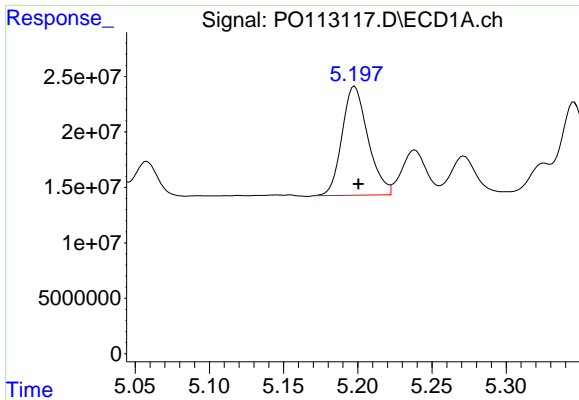
#6 AR-1016-4

R.T.: 4.942 min
 Delta R.T.: -0.002 min
 Response: 111362556
 Conc: 510.68 ng/ml



#6 AR-1016-4

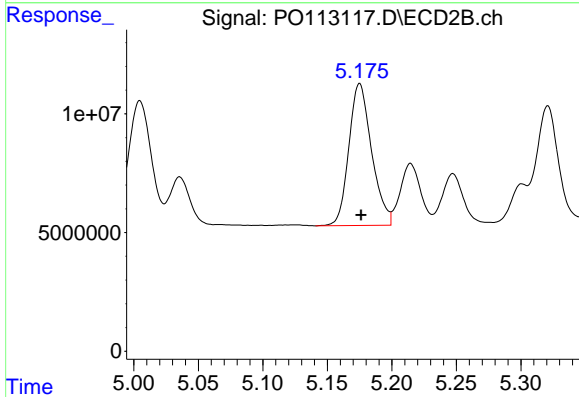
R.T.: 4.963 min
 Delta R.T.: -0.001 min
 Response: 56422466
 Conc: 483.49 ng/ml



#7 AR-1016-5

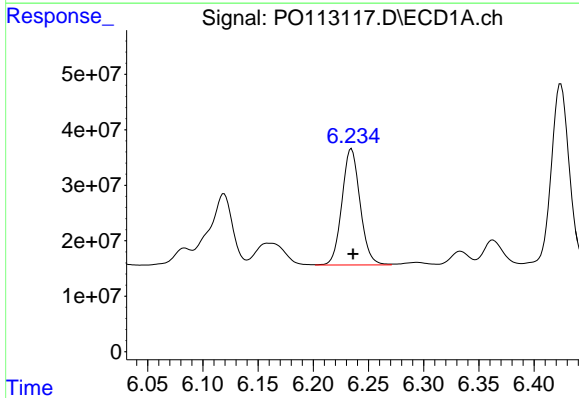
R.T.: 5.198 min
 Delta R.T.: -0.003 min
 Response: 119476633
 Conc: 539.09 ng/ml

Instrument :
 ECD_O
 ClientSampleId :
 AR1660CCC500



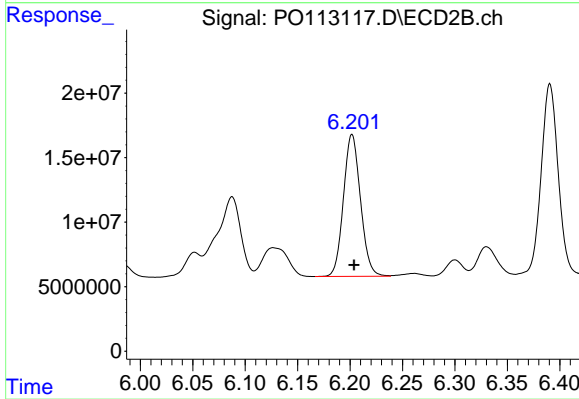
#7 AR-1016-5

R.T.: 5.175 min
 Delta R.T.: -0.001 min
 Response: 73423229
 Conc: 515.14 ng/ml



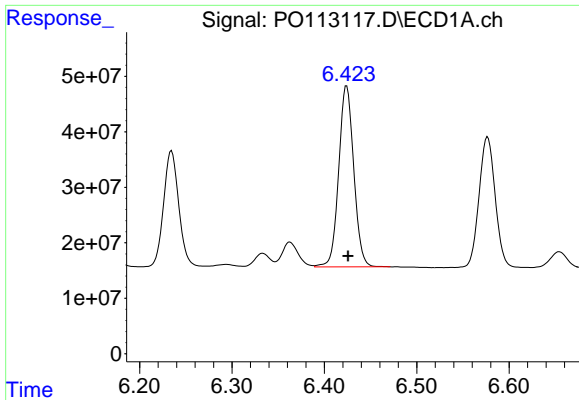
#31 AR-1260-1

R.T.: 6.235 min
 Delta R.T.: -0.002 min
 Response: 239722886
 Conc: 537.52 ng/ml



#31 AR-1260-1

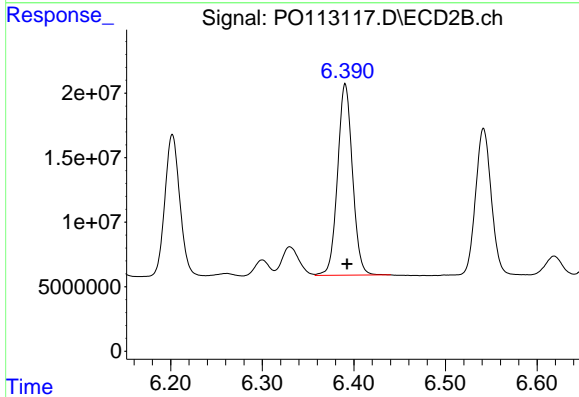
R.T.: 6.202 min
 Delta R.T.: -0.002 min
 Response: 124406709
 Conc: 487.74 ng/ml



#32 AR-1260-2

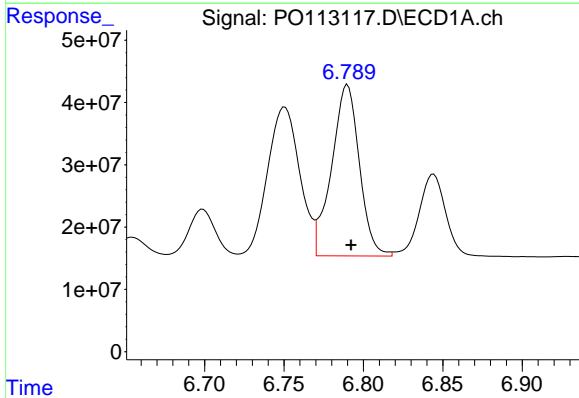
R.T.: 6.424 min
 Delta R.T.: -0.001 min
 Response: 369095748
 Conc: 537.48 ng/ml

Instrument :
 ECD_O
 ClientSampleId :
 AR1660CCC500



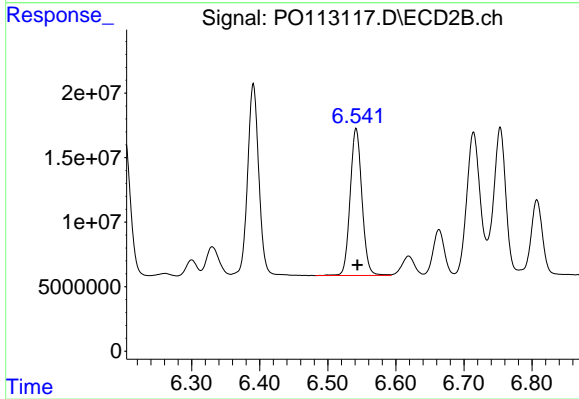
#32 AR-1260-2

R.T.: 6.391 min
 Delta R.T.: -0.002 min
 Response: 167927597
 Conc: 485.74 ng/ml



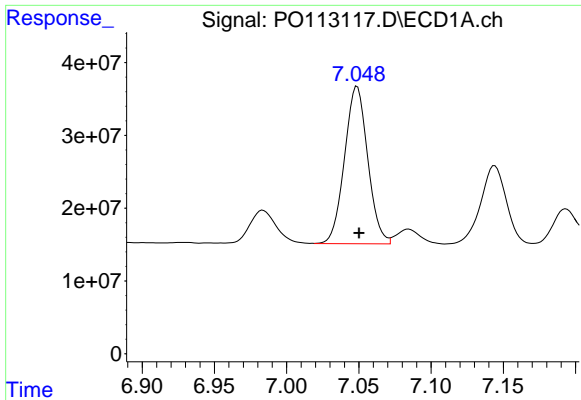
#33 AR-1260-3

R.T.: 6.790 min
 Delta R.T.: -0.002 min
 Response: 334693770
 Conc: 542.04 ng/ml



#33 AR-1260-3

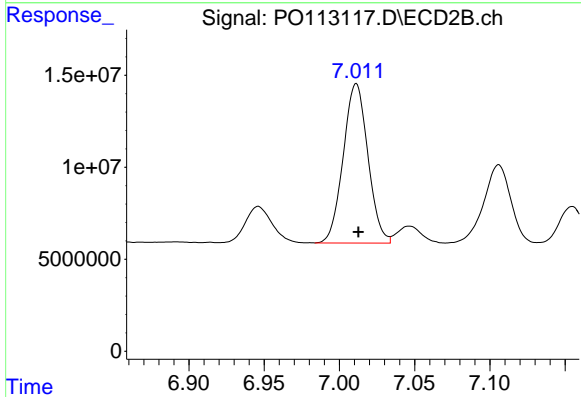
R.T.: 6.542 min
 Delta R.T.: -0.002 min
 Response: 137116616
 Conc: 461.00 ng/ml



#34 AR-1260-4

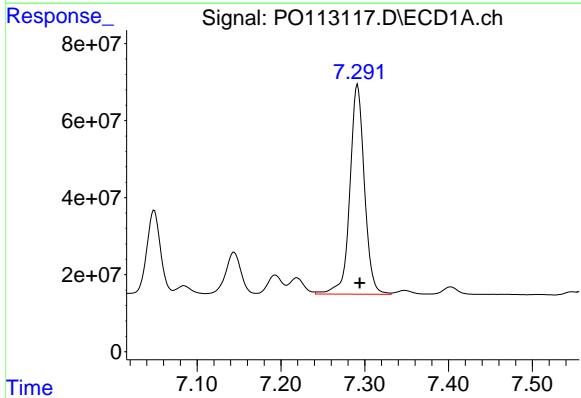
R.T.: 7.049 min
Delta R.T.: -0.001 min
Response: 241373377
Conc: 538.93 ng/ml

Instrument :
ECD_O
ClientSampleId :
AR1660CCC500



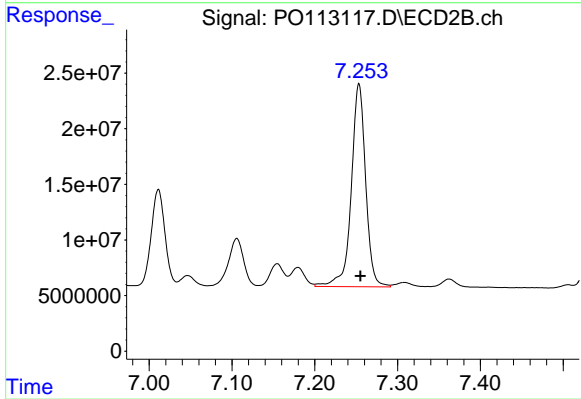
#34 AR-1260-4

R.T.: 7.011 min
Delta R.T.: -0.001 min
Response: 98982024
Conc: 477.60 ng/ml



#35 AR-1260-5

R.T.: 7.291 min
Delta R.T.: -0.002 min
Response: 656387934
Conc: 542.16 ng/ml



#35 AR-1260-5

R.T.: 7.253 min
Delta R.T.: -0.002 min
Response: 220213230
Conc: 470.11 ng/ml