

Data Path : Z:\pestpcbsrv\HPCHEM1\ECD\_0\Data\P0082125\  
 Data File : P0113121.D  
 Signal(s) : Signal #1: ECD1A.ch Signal #2: ECD2B.ch  
 Acq On : 21 Aug 2025 11:17  
 Operator : YP/AJ  
 Sample : AR1660CCC500  
 Misc :  
 ALS Vial : 3 Sample Multiplier: 1

Instrument :  
 ECD\_0  
 ClientSampleId :  
 AR1660CCC500

Integration File signal 1: autoint1.e  
 Integration File signal 2: autoint2.e  
 Quant Time: Aug 21 11:39:50 2025  
 Quant Method : Z:\pestpcbsrv\HPCHEM1\ECD\_0\methods\P0081825.M  
 Quant Title : GC EXTRACTABLES  
 QLast Update : Tue Aug 19 06:08:32 2025  
 Response via : Initial Calibration  
 Integrator: ChemStation

Volume Inj. : 2 µl  
 Signal #1 Phase : ZB-MR1 Signal #2 Phase: ZB-MR2  
 Signal #1 Info : 30Mx0.32mmx 0.50µ Signal #2 Info : 30M x 0.32mm x 0.25µm

Compound	RT#1	RT#2	Resp#1	Resp#2	ng/ml	ng/ml
-----						
System Monitoring Compounds						
1) SA Tetrachlo...	3.662	3.654	436.5E6	256.8E6	53.321	50.739
2) SA Decachlor...	8.681	8.626	352.0E6	95627816	50.779	50.467
Target Compounds						
3) L1 AR-1016-1	4.747	4.727	143.9E6	84558715	539.077	495.731
4) L1 AR-1016-2	4.765	4.745	216.4E6	129.8E6	539.144	503.750
5) L1 AR-1016-3	4.822	4.920	138.9E6	67951488	544.629	486.708
6) L1 AR-1016-4	4.941	4.963	108.5E6	55708850	497.694	477.372
7) L1 AR-1016-5	5.198	5.175	117.6E6	72057111	530.524	505.558
31) L7 AR-1260-1	6.234	6.202	233.0E6	123.3E6	522.405	483.428
32) L7 AR-1260-2	6.424	6.391	360.5E6	167.5E6	524.963	484.404
33) L7 AR-1260-3	6.789	6.542	327.6E6	134.4E6	530.519	451.823
34) L7 AR-1260-4	7.049	7.012	236.6E6	98393332	528.342	474.758
35) L7 AR-1260-5	7.293	7.254	643.2E6	218.7E6	531.267	466.868

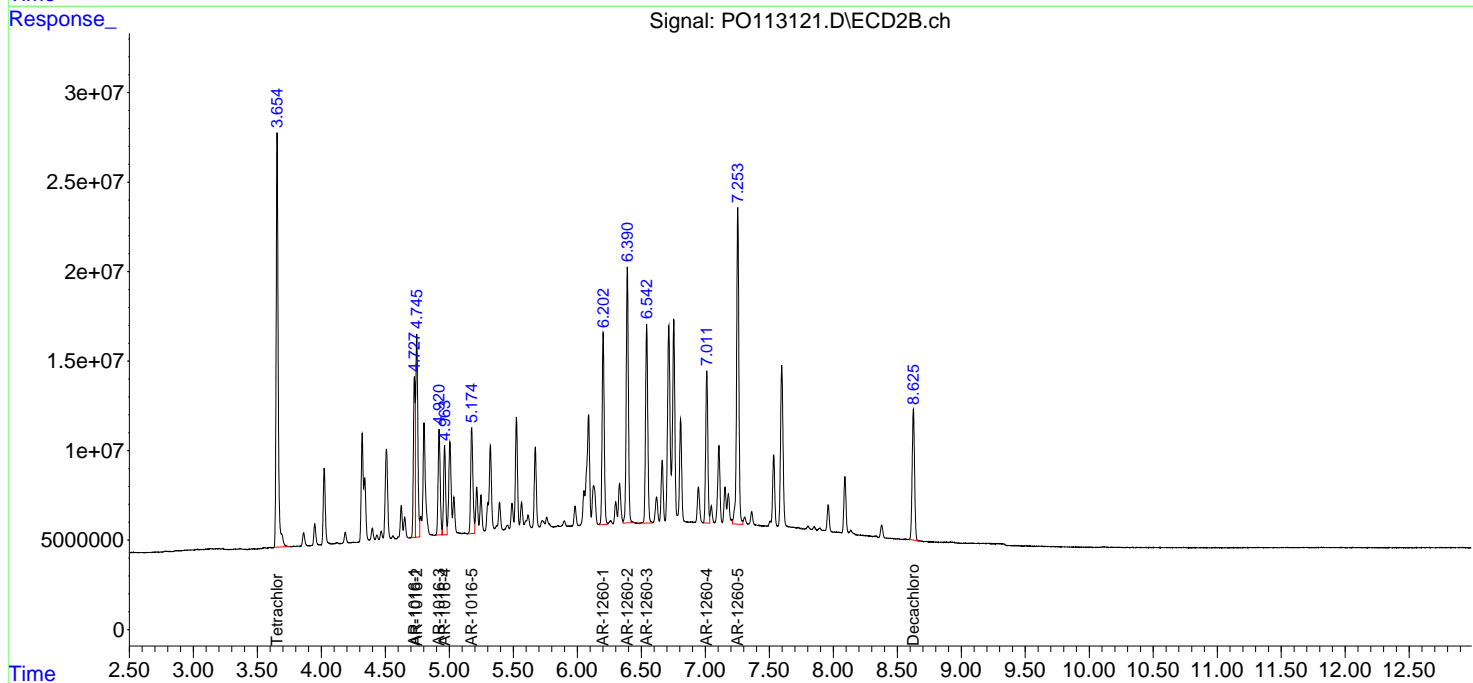
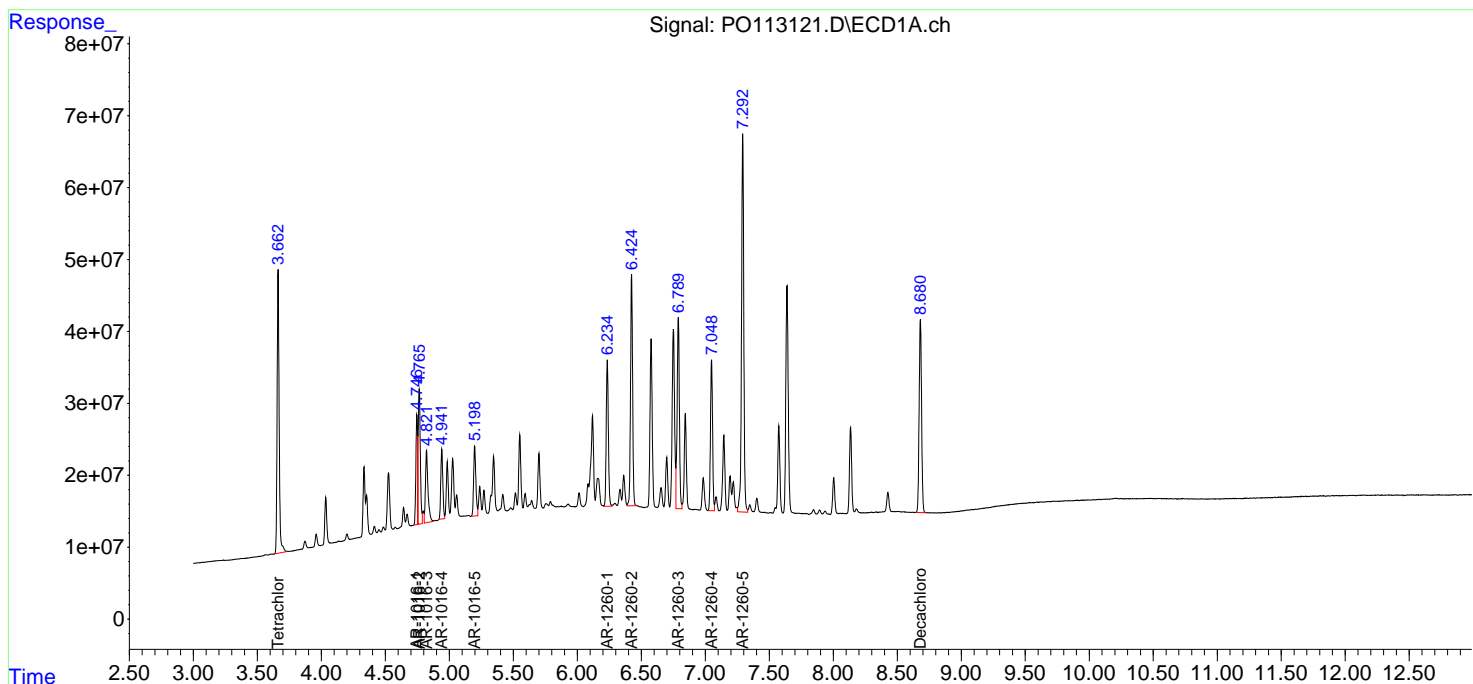
(f)=RT Delta > 1/2 Window (#)=Amounts differ by > 25% (m)=manual int.

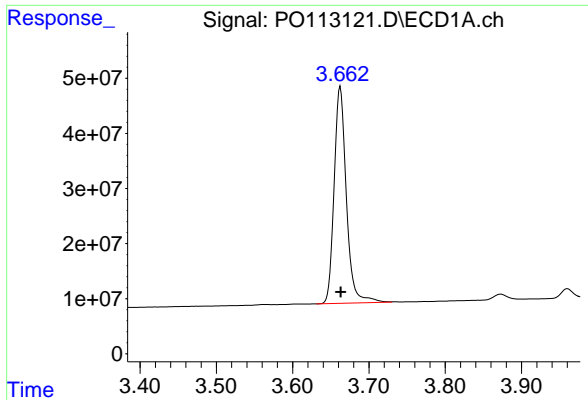
Data Path : Z:\pestpcbsrv\HPCHEM1\ECD\_O\Data\PO082125\  
 Data File : PO113121.D  
 Signal(s) : Signal #1: ECD1A.ch Signal #2: ECD2B.ch  
 Acq On : 21 Aug 2025 11:17  
 Operator : YP/AJ  
 Sample : AR1660CCC500  
 Misc :  
 ALS Vial : 3 Sample Multiplier: 1

Instrument :  
 ECD\_O  
 ClientSampleId :  
 AR1660CCC500

Integration File signal 1: autoint1.e  
 Integration File signal 2: autoint2.e  
 Quant Time: Aug 21 11:39:50 2025  
 Quant Method : Z:\pestpcbsrv\HPCHEM1\ECD\_O\methods\PO081825.M  
 Quant Title : GC EXTRACTABLES  
 QLast Update : Tue Aug 19 06:08:32 2025  
 Response via : Initial Calibration  
 Integrator: ChemStation

Volume Inj. : 2 µl  
 Signal #1 Phase : ZB-MR1 Signal #2 Phase: ZB-MR2  
 Signal #1 Info : 30Mx0.32mmx 0.50µ Signal #2 Info : 30M x 0.32mm x 0.25µm

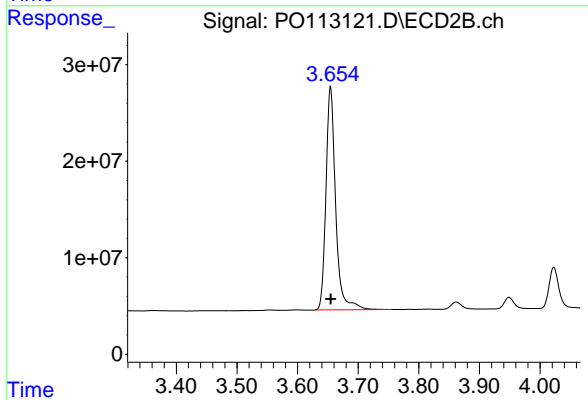




#1 Tetrachloro-m-xylene

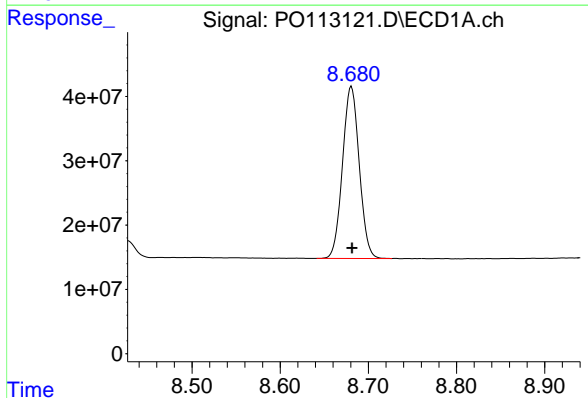
R.T.: 3.662 min  
Delta R.T.: 0.000 min  
Response: 436520189  
Conc: 53.32 ng/ml

Instrument :  
ECD\_O  
ClientSampleId :  
AR1660CCC500



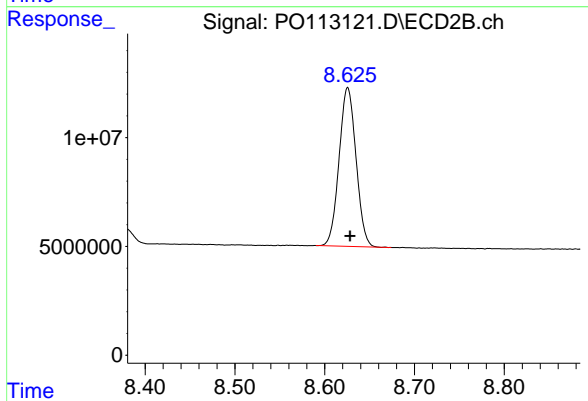
#1 Tetrachloro-m-xylene

R.T.: 3.654 min  
Delta R.T.: 0.000 min  
Response: 256770100  
Conc: 50.74 ng/ml



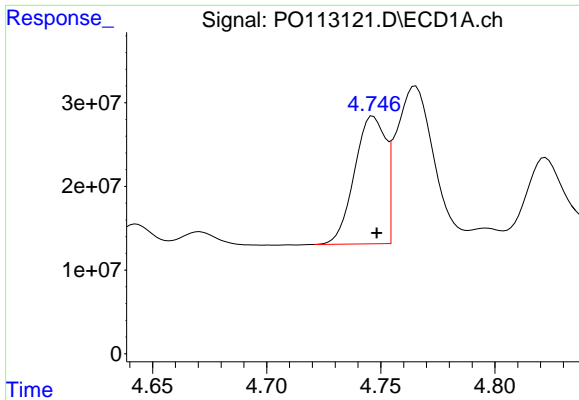
#2 Decachlorobiphenyl

R.T.: 8.681 min  
Delta R.T.: 0.000 min  
Response: 351973064  
Conc: 50.78 ng/ml



#2 Decachlorobiphenyl

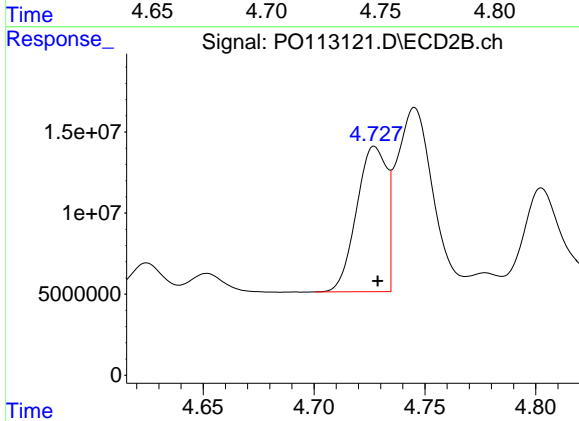
R.T.: 8.626 min  
Delta R.T.: -0.003 min  
Response: 95627816  
Conc: 50.47 ng/ml



#3 AR-1016-1

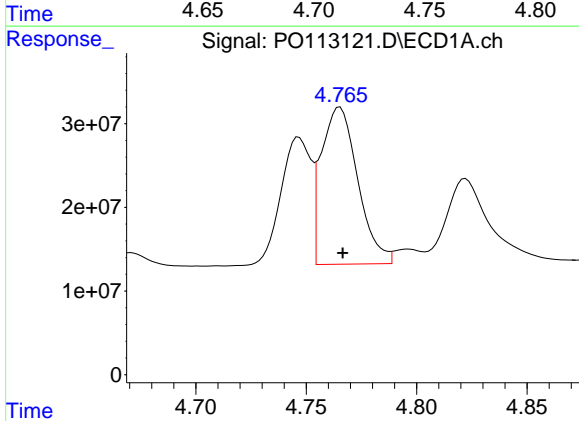
R.T.: 4.747 min  
 Delta R.T.: -0.002 min  
 Response: 143925355  
 Conc: 539.08 ng/ml

Instrument :  
 ECD\_O  
 ClientSampleId :  
 AR1660CCC500



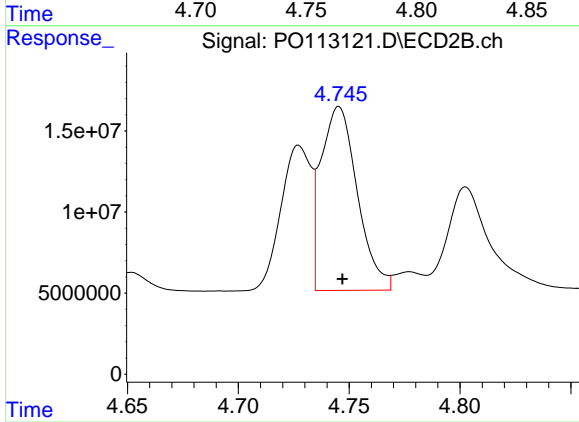
#3 AR-1016-1

R.T.: 4.727 min  
 Delta R.T.: -0.001 min  
 Response: 84558715  
 Conc: 495.73 ng/ml



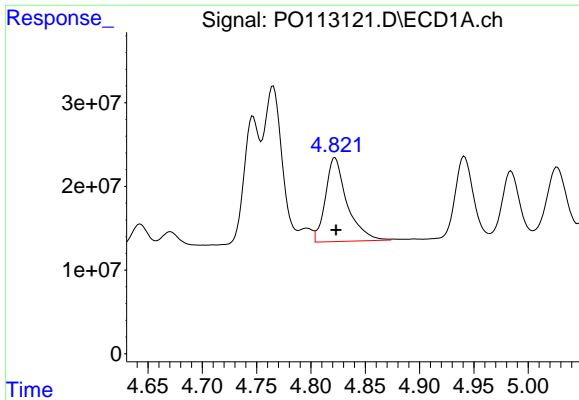
#4 AR-1016-2

R.T.: 4.765 min  
 Delta R.T.: -0.001 min  
 Response: 216429456  
 Conc: 539.14 ng/ml



#4 AR-1016-2

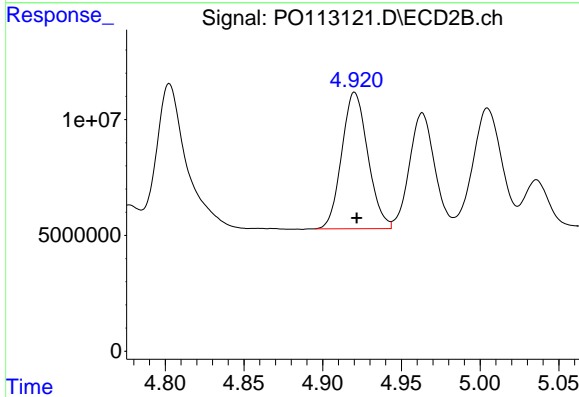
R.T.: 4.745 min  
 Delta R.T.: -0.002 min  
 Response: 129794122  
 Conc: 503.75 ng/ml



#5 AR-1016-3

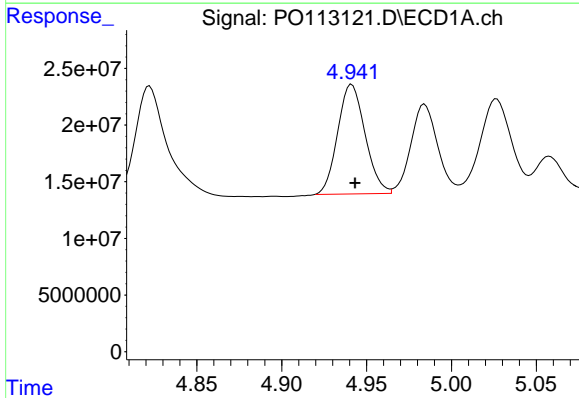
R.T.: 4.822 min  
 Delta R.T.: -0.001 min  
 Response: 138892510  
 Conc: 544.63 ng/ml

Instrument :  
 ECD\_O  
 ClientSampleId :  
 AR1660CCC500



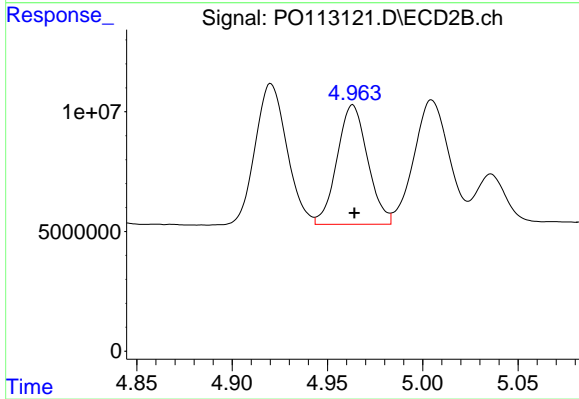
#5 AR-1016-3

R.T.: 4.920 min  
 Delta R.T.: -0.001 min  
 Response: 67951488  
 Conc: 486.71 ng/ml



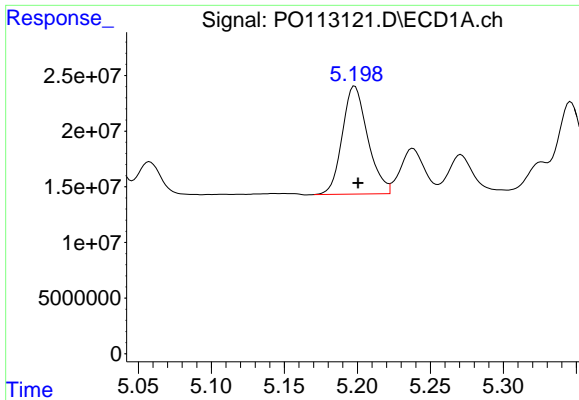
#6 AR-1016-4

R.T.: 4.941 min  
 Delta R.T.: -0.002 min  
 Response: 108531049  
 Conc: 497.69 ng/ml



#6 AR-1016-4

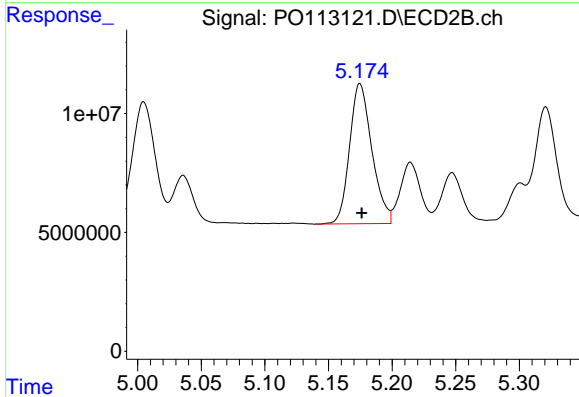
R.T.: 4.963 min  
 Delta R.T.: 0.000 min  
 Response: 55708850  
 Conc: 477.37 ng/ml



#7 AR-1016-5

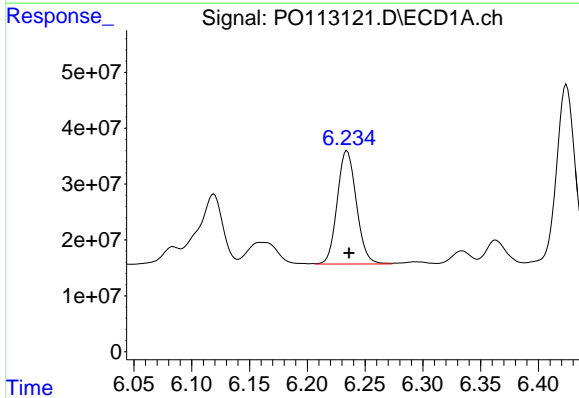
R.T.: 5.198 min  
Delta R.T.: -0.002 min  
Response: 117578857  
Conc: 530.52 ng/ml

Instrument :  
ECD\_O  
ClientSampleId :  
AR1660CCC500



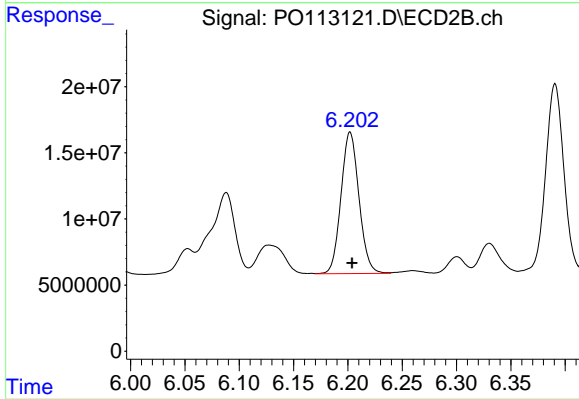
#7 AR-1016-5

R.T.: 5.175 min  
Delta R.T.: -0.001 min  
Response: 72057111  
Conc: 505.56 ng/ml



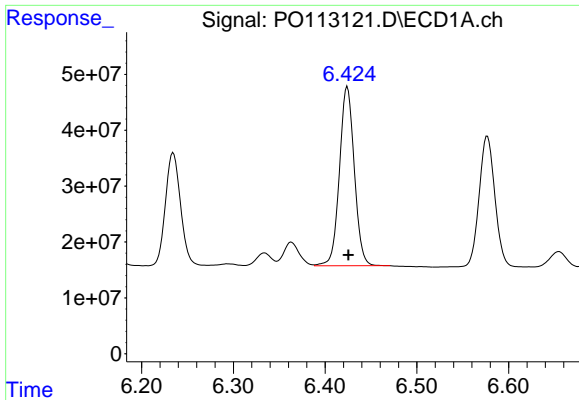
#31 AR-1260-1

R.T.: 6.234 min  
Delta R.T.: -0.002 min  
Response: 232982524  
Conc: 522.41 ng/ml



#31 AR-1260-1

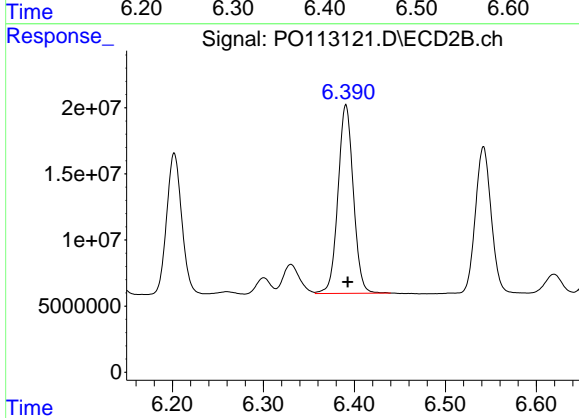
R.T.: 6.202 min  
Delta R.T.: -0.002 min  
Response: 123307406  
Conc: 483.43 ng/ml



#32 AR-1260-2

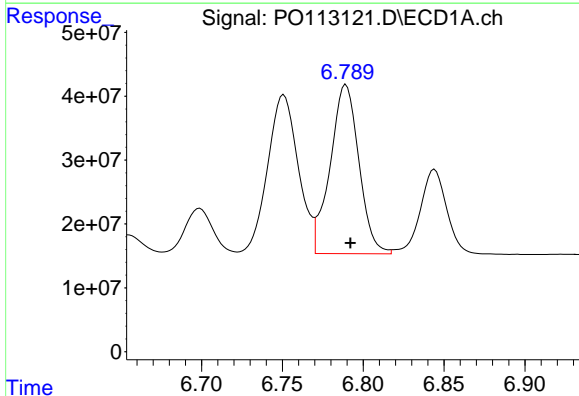
R.T.: 6.424 min  
 Delta R.T.: -0.001 min  
 Response: 360503358  
 Conc: 524.96 ng/ml

Instrument :  
 ECD\_O  
 ClientSampleId :  
 AR1660CCC500



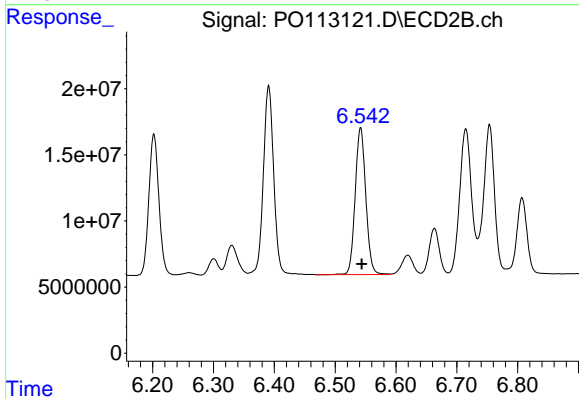
#32 AR-1260-2

R.T.: 6.391 min  
 Delta R.T.: -0.002 min  
 Response: 167464001  
 Conc: 484.40 ng/ml



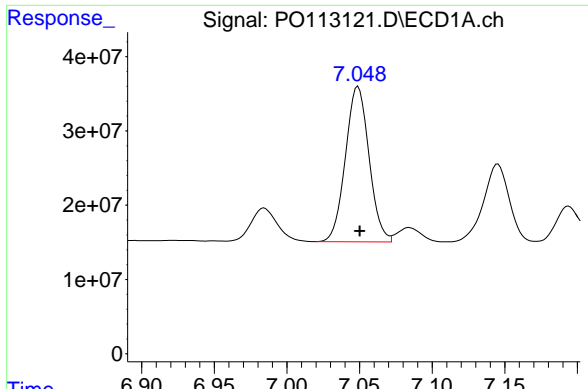
#33 AR-1260-3

R.T.: 6.789 min  
 Delta R.T.: -0.003 min  
 Response: 327581338  
 Conc: 530.52 ng/ml



#33 AR-1260-3

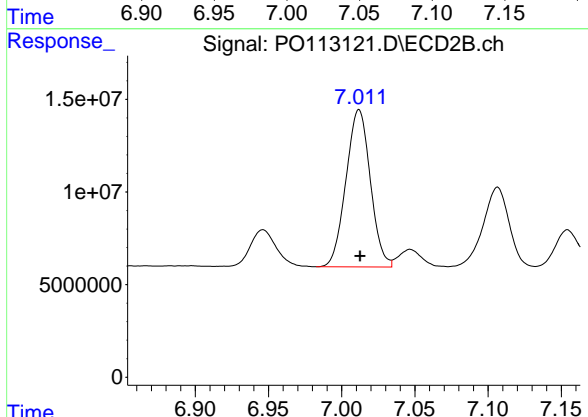
R.T.: 6.542 min  
 Delta R.T.: -0.002 min  
 Response: 134387509  
 Conc: 451.82 ng/ml



#34 AR-1260-4

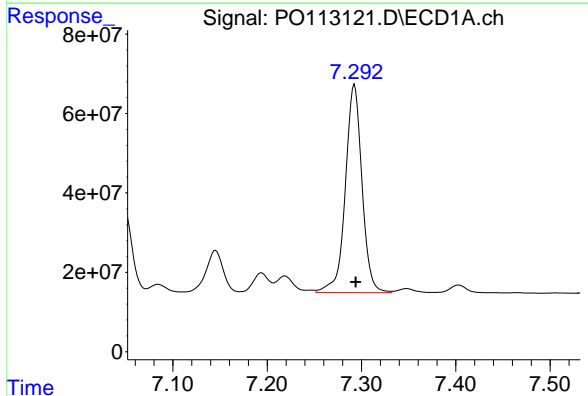
R.T.: 7.049 min  
 Delta R.T.: -0.001 min  
 Response: 236631034  
 Conc: 528.34 ng/ml

Instrument :  
 ECD\_O  
 ClientSampleId :  
 AR1660CCC500



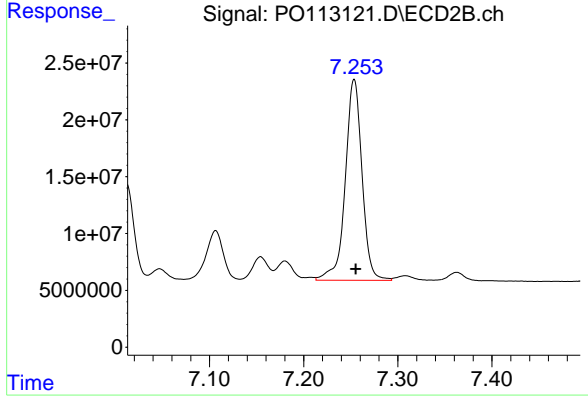
#34 AR-1260-4

R.T.: 7.012 min  
 Delta R.T.: 0.000 min  
 Response: 98393332  
 Conc: 474.76 ng/ml



#35 AR-1260-5

R.T.: 7.293 min  
 Delta R.T.: -0.001 min  
 Response: 643196883  
 Conc: 531.27 ng/ml



#35 AR-1260-5

R.T.: 7.254 min  
 Delta R.T.: -0.002 min  
 Response: 218694663  
 Conc: 466.87 ng/ml