

Data Path : Z:\pestpcbsrv\HPCHEM1\ECD\_0\Data\P0082125\  
 Data File : P0113122.D  
 Signal(s) : Signal #1: ECD1A.ch Signal #2: ECD2B.ch  
 Acq On : 21 Aug 2025 11:39  
 Operator : YP/AJ  
 Sample : AR1242CCC500  
 Misc :  
 ALS Vial : 4 Sample Multiplier: 1

Instrument :  
 ECD\_0  
 ClientSampleId :  
 AR1242CCC500

Integration File signal 1: autoint1.e  
 Integration File signal 2: autoint2.e  
 Quant Time: Aug 21 12:49:31 2025  
 Quant Method : Z:\pestpcbsrv\HPCHEM1\ECD\_0\methods\P0081825.M  
 Quant Title : GC EXTRACTABLES  
 QLast Update : Tue Aug 19 06:08:32 2025  
 Response via : Initial Calibration  
 Integrator: ChemStation

Volume Inj. : 2 µl  
 Signal #1 Phase : ZB-MR1 Signal #2 Phase: ZB-MR2  
 Signal #1 Info : 30Mx0.32mmx 0.50µ Signal #2 Info : 30M x 0.32mm x 0.25µm

Compound	RT#1	RT#2	Resp#1	Resp#2	ng/ml	ng/ml
-----						
System Monitoring Compounds						
1) SA Tetrachlo...	3.665	3.654	454.6E6	266.8E6	55.532	52.711
2) SA Decachlor...	8.684	8.627	366.9E6	97984832	52.932	51.711
Target Compounds						
16) L4 AR-1242-1	4.750	4.728	127.0E6	76212042	552.313	527.403
17) L4 AR-1242-2	4.769	4.746	194.1E6	115.3E6	564.719	531.560
18) L4 AR-1242-3	4.825	4.921	123.3E6	60658677	555.610	518.608
19) L4 AR-1242-4	4.945	5.005	97681702	59688909	563.128	507.397
20) L4 AR-1242-5	5.595	5.524	109.3E6	78608674	546.085	527.105
-----						

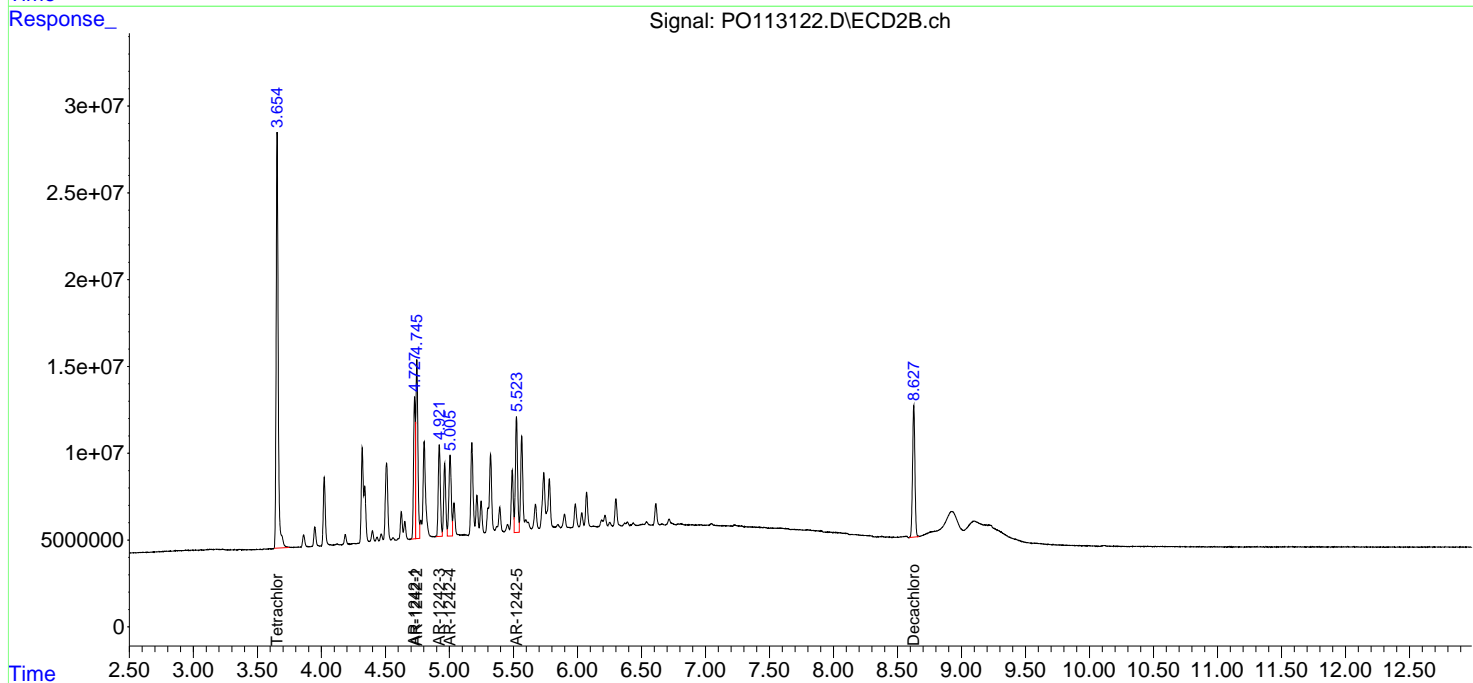
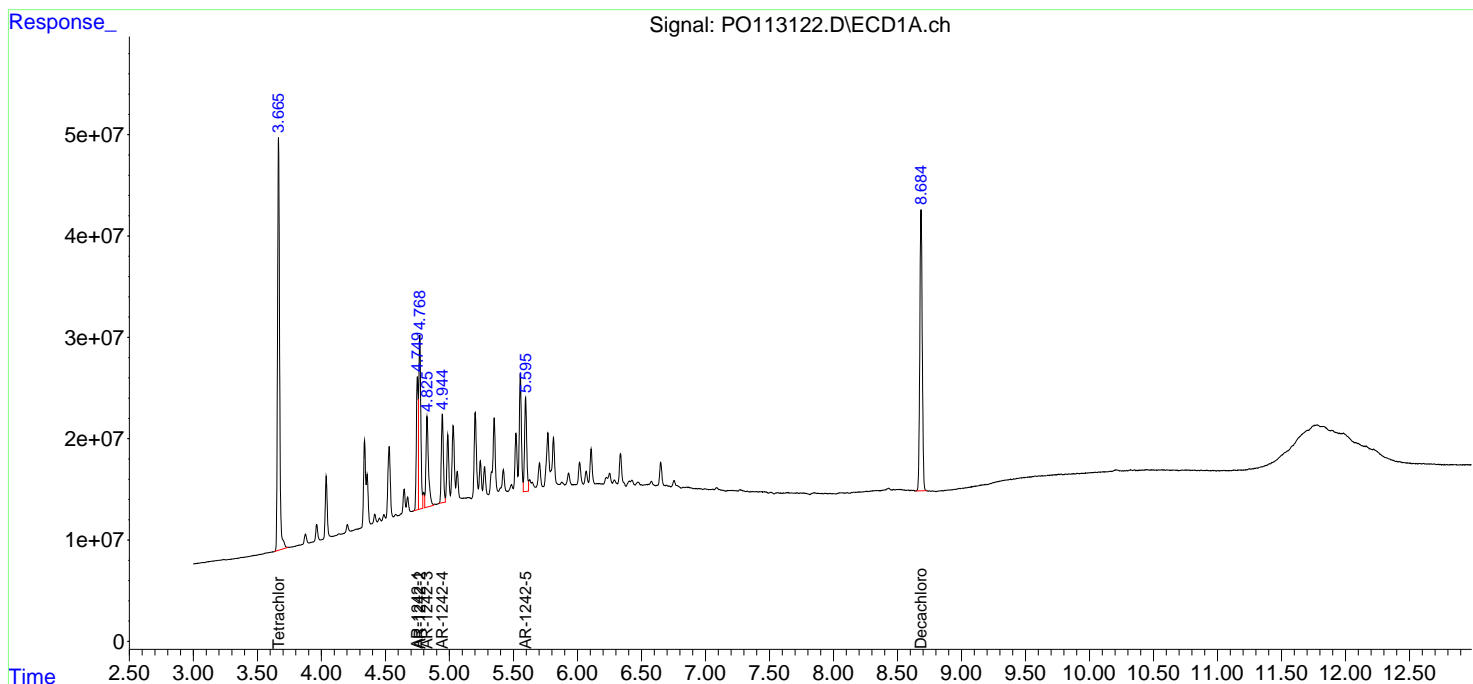
(f)=RT Delta > 1/2 Window (#)=Amounts differ by > 25% (m)=manual int.

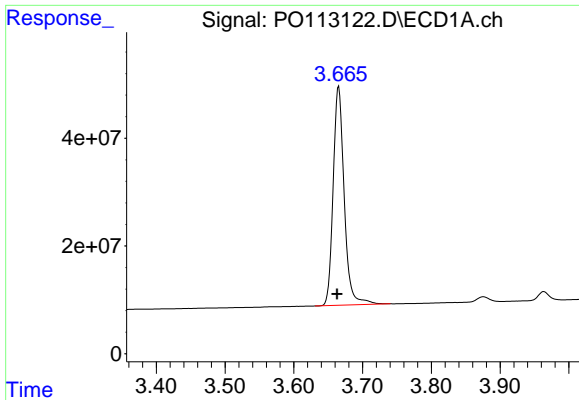
Data Path : Z:\pestpcbsrv\HPCHEM1\ECD\_O\Data\P0082125\  
 Data File : P0113122.D  
 Signal(s) : Signal #1: ECD1A.ch Signal #2: ECD2B.ch  
 Acq On : 21 Aug 2025 11:39  
 Operator : YP/AJ  
 Sample : AR1242CCC500  
 Misc :  
 ALS Vial : 4 Sample Multiplier: 1

Instrument :  
 ECD\_O  
 ClientSampleId :  
 AR1242CCC500

Integration File signal 1: autoint1.e  
 Integration File signal 2: autoint2.e  
 Quant Time: Aug 21 12:49:31 2025  
 Quant Method : Z:\pestpcbsrv\HPCHEM1\ECD\_O\methods\P0081825.M  
 Quant Title : GC EXTRACTABLES  
 QLast Update : Tue Aug 19 06:08:32 2025  
 Response via : Initial Calibration  
 Integrator: ChemStation

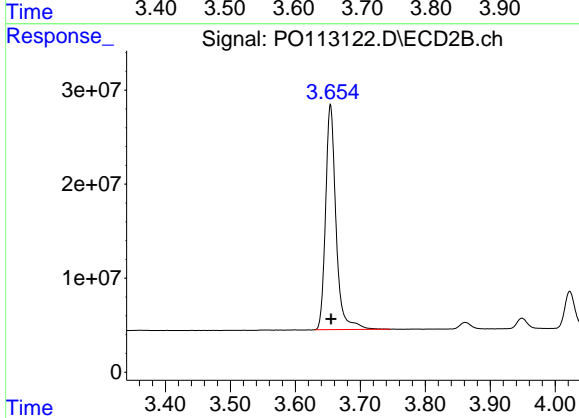
Volume Inj. : 2 µl  
 Signal #1 Phase : ZB-MR1 Signal #2 Phase: ZB-MR2  
 Signal #1 Info : 30Mx0.32mmx 0.50µ Signal #2 Info : 30M x 0.32mm x 0.25µm



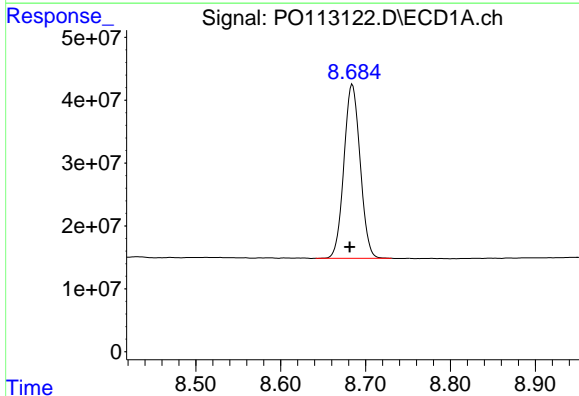


#1 Tetrachloro-m-xylene  
 R.T.: 3.665 min  
 Delta R.T.: 0.002 min  
 Response: 454618551  
 Conc: 55.53 ng/ml

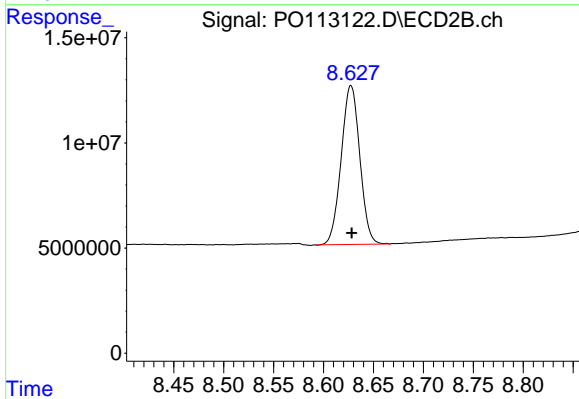
Instrument :  
 ECD\_O  
 ClientSampleId :  
 AR1242CCC500



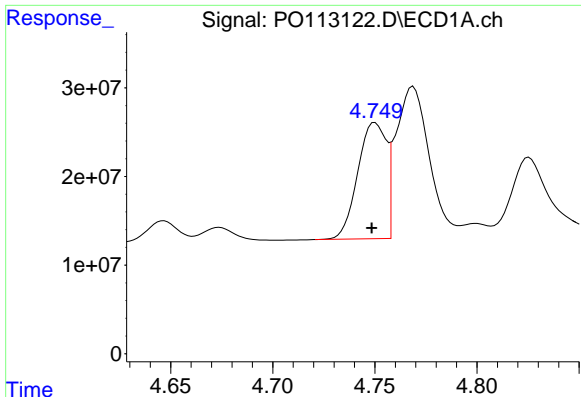
#1 Tetrachloro-m-xylene  
 R.T.: 3.654 min  
 Delta R.T.: 0.000 min  
 Response: 266750726  
 Conc: 52.71 ng/ml



#2 Decachlorobiphenyl  
 R.T.: 8.684 min  
 Delta R.T.: 0.003 min  
 Response: 366893307  
 Conc: 52.93 ng/ml



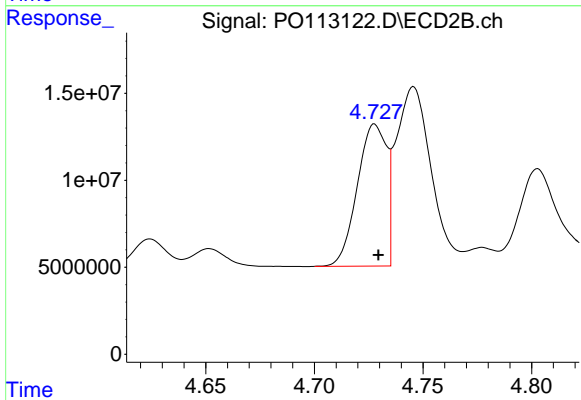
#2 Decachlorobiphenyl  
 R.T.: 8.627 min  
 Delta R.T.: 0.000 min  
 Response: 97984832  
 Conc: 51.71 ng/ml



#16 AR-1242-1

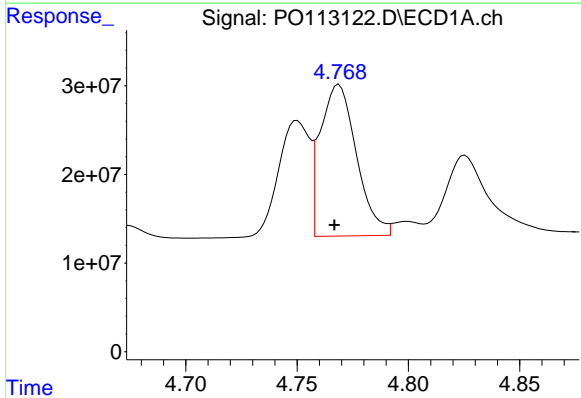
R.T.: 4.750 min  
 Delta R.T.: 0.002 min  
 Response: 126994408  
 Conc: 552.31 ng/ml

Instrument :  
 ECD\_O  
 ClientSampleId :  
 AR1242CCC500



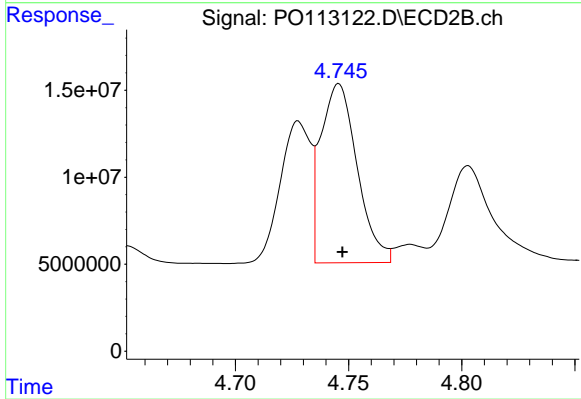
#16 AR-1242-1

R.T.: 4.728 min  
 Delta R.T.: -0.002 min  
 Response: 76212042  
 Conc: 527.40 ng/ml



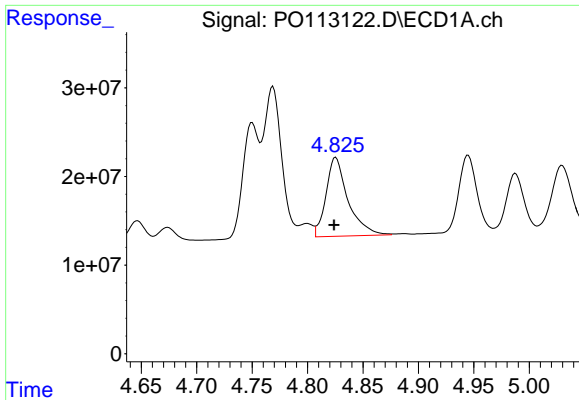
#17 AR-1242-2

R.T.: 4.769 min  
 Delta R.T.: 0.002 min  
 Response: 194051796  
 Conc: 564.72 ng/ml



#17 AR-1242-2

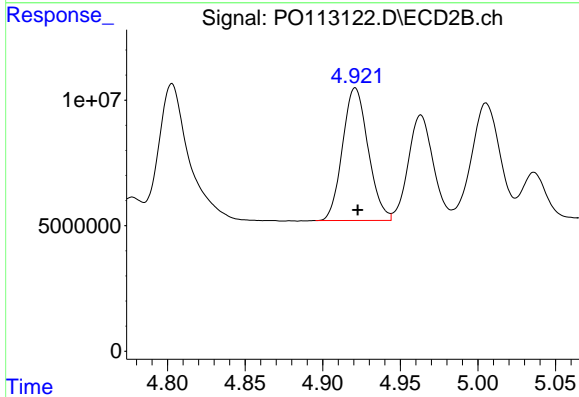
R.T.: 4.746 min  
 Delta R.T.: -0.002 min  
 Response: 115301291  
 Conc: 531.56 ng/ml



#18 AR-1242-3

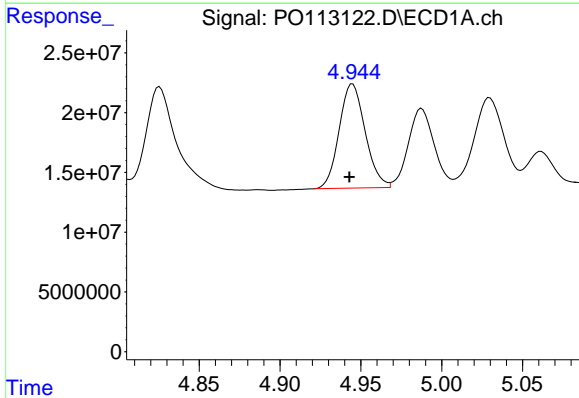
R.T.: 4.825 min  
 Delta R.T.: 0.002 min  
 Response: 123281158  
 Conc: 555.61 ng/ml

Instrument :  
 ECD\_O  
 ClientSampleId :  
 AR1242CCC500



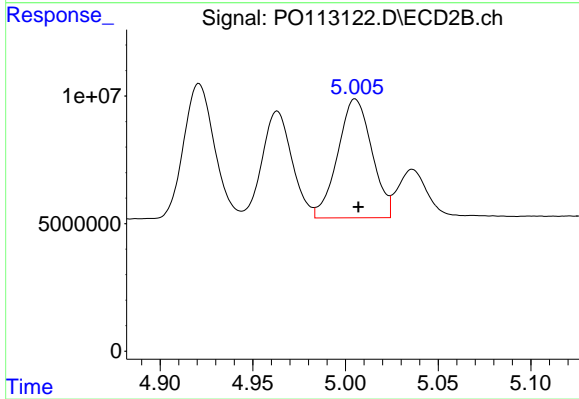
#18 AR-1242-3

R.T.: 4.921 min  
 Delta R.T.: -0.002 min  
 Response: 60658677  
 Conc: 518.61 ng/ml



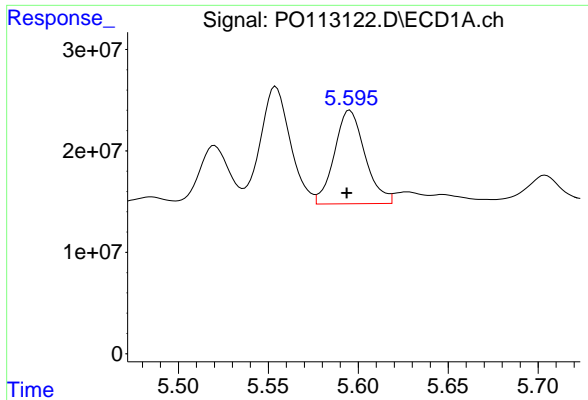
#19 AR-1242-4

R.T.: 4.945 min  
 Delta R.T.: 0.002 min  
 Response: 97681702  
 Conc: 563.13 ng/ml



#19 AR-1242-4

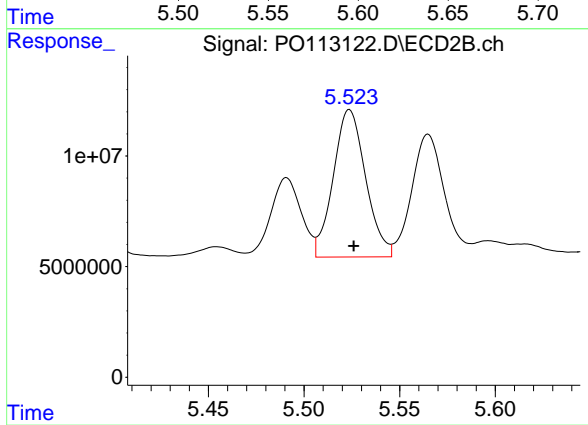
R.T.: 5.005 min  
 Delta R.T.: -0.002 min  
 Response: 59688909  
 Conc: 507.40 ng/ml



#20 AR-1242-5

R.T.: 5.595 min  
Delta R.T.: 0.002 min  
Response: 109305599  
Conc: 546.08 ng/ml

Instrument :  
ECD\_O  
ClientSampleId :  
AR1242CCC500



#20 AR-1242-5

R.T.: 5.524 min  
Delta R.T.: -0.002 min  
Response: 78608674  
Conc: 527.10 ng/ml