

Data Path : Z:\pestpcbsrv\HPCHEM1\ECD\_0\Data\P0082125\  
 Data File : P0113123.D  
 Signal(s) : Signal #1: ECD1A.ch Signal #2: ECD2B.ch  
 Acq On : 21 Aug 2025 11:57  
 Operator : YP/AJ  
 Sample : AR1248CCC500  
 Misc :  
 ALS Vial : 5 Sample Multiplier: 1

Instrument :  
 ECD\_0  
 ClientSampleId :  
 AR1248CCC500

Integration File signal 1: autoint1.e  
 Integration File signal 2: autoint2.e  
 Quant Time: Aug 21 12:50:13 2025  
 Quant Method : Z:\pestpcbsrv\HPCHEM1\ECD\_0\methods\P0081825.M  
 Quant Title : GC EXTRACTABLES  
 QLast Update : Tue Aug 19 06:08:32 2025  
 Response via : Initial Calibration  
 Integrator: ChemStation

Volume Inj. : 2 µl  
 Signal #1 Phase : ZB-MR1 Signal #2 Phase: ZB-MR2  
 Signal #1 Info : 30Mx0.32mmx 0.50µ Signal #2 Info : 30M x 0.32mm x 0.25µm

Compound	RT#1	RT#2	Resp#1	Resp#2	ng/ml	ng/ml
-----						
System Monitoring Compounds						
1) SA Tetrachlo...	3.663	3.655	448.0E6	262.2E6	54.728	51.809
2) SA Decachlor...	8.680	8.626	366.5E6	99309654	52.868	52.410
Target Compounds						
21) L5 AR-1248-1	4.747	4.728	94366774	58543866	540.888	525.001
22) L5 AR-1248-2	4.985	4.963	130.4E6	82225515	539.307	511.674
23) L5 AR-1248-3	5.199	5.005	170.5E6	86772779	534.778	511.449
24) L5 AR-1248-4	5.551	5.175	260.1E6	102.9E6	520.667	516.370
25) L5 AR-1248-5	5.593	5.565	176.0E6	103.4E6	515.353	486.885
-----						

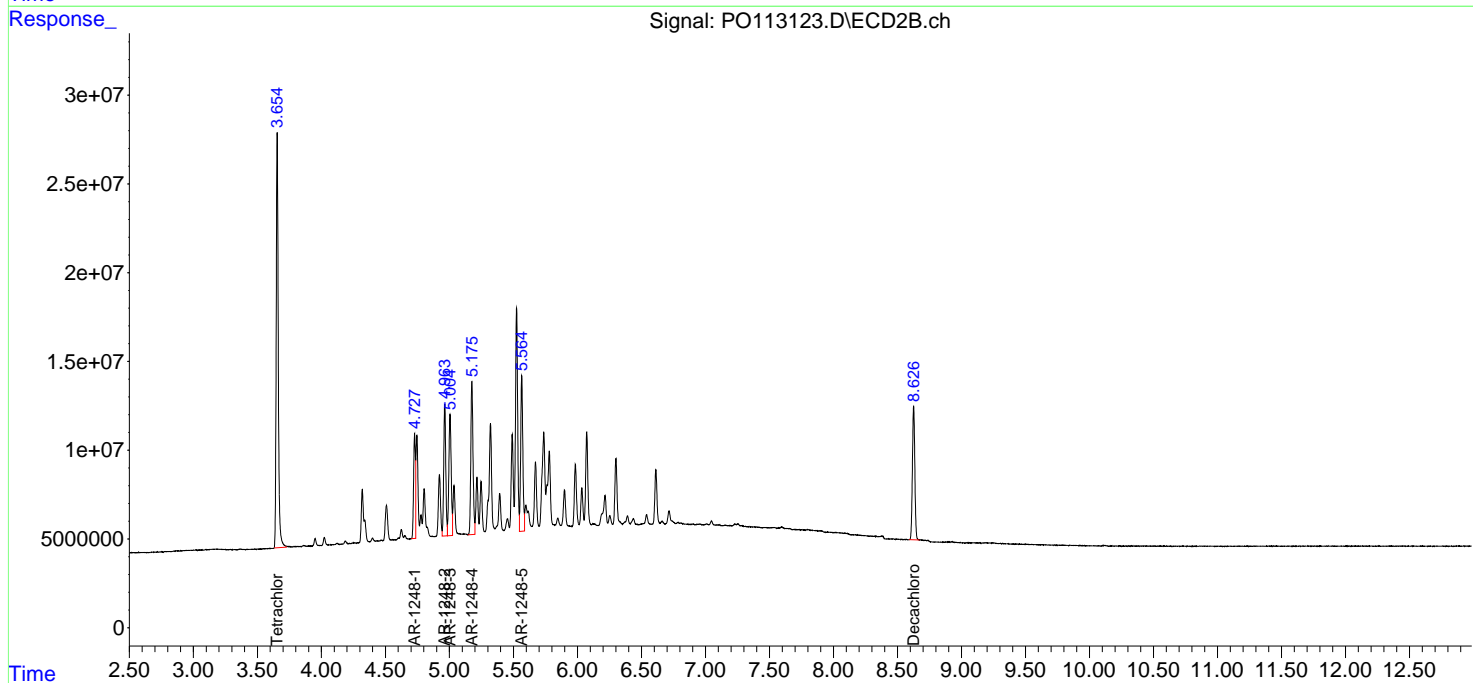
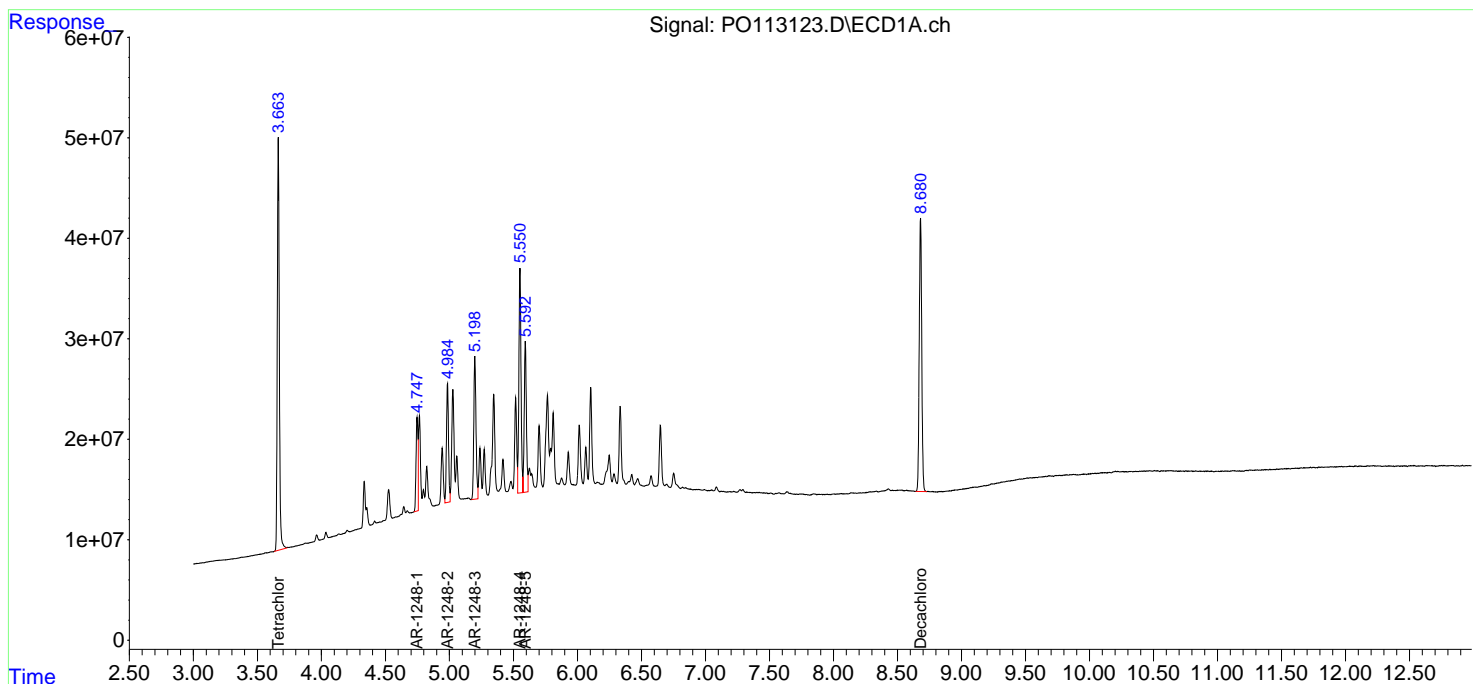
(f)=RT Delta > 1/2 Window (#)=Amounts differ by > 25% (m)=manual int.

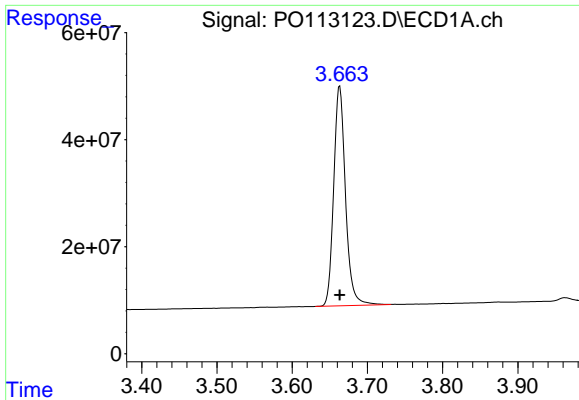
Data Path : Z:\pestpcbsrv\HPCHEM1\ECD\_O\Data\P0082125\  
 Data File : P0113123.D  
 Signal(s) : Signal #1: ECD1A.ch Signal #2: ECD2B.ch  
 Acq On : 21 Aug 2025 11:57  
 Operator : YP/AJ  
 Sample : AR1248CCC500  
 Misc :  
 ALS Vial : 5 Sample Multiplier: 1

Instrument :  
 ECD\_O  
 ClientSampleId :  
 AR1248CCC500

Integration File signal 1: autoint1.e  
 Integration File signal 2: autoint2.e  
 Quant Time: Aug 21 12:50:13 2025  
 Quant Method : Z:\pestpcbsrv\HPCHEM1\ECD\_O\methods\P0081825.M  
 Quant Title : GC EXTRACTABLES  
 QLast Update : Tue Aug 19 06:08:32 2025  
 Response via : Initial Calibration  
 Integrator: ChemStation

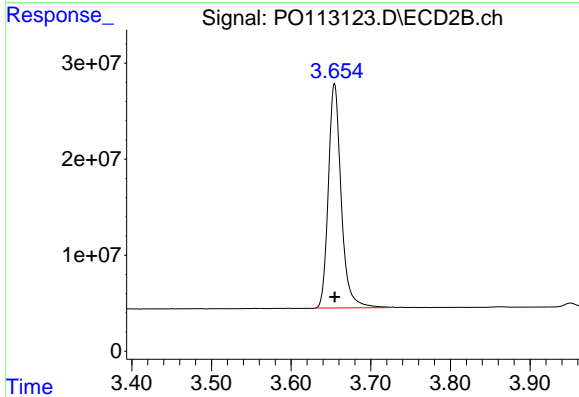
Volume Inj. : 2 µl  
 Signal #1 Phase : ZB-MR1 Signal #2 Phase: ZB-MR2  
 Signal #1 Info : 30Mx0.32mmx 0.50µ Signal #2 Info : 30M x 0.32mm x 0.25µm



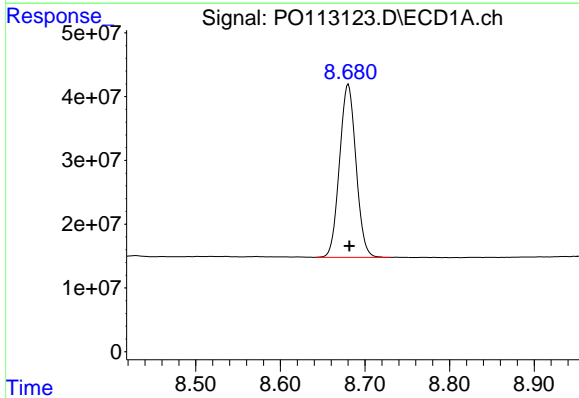


#1 Tetrachloro-m-xylene  
R.T.: 3.663 min  
Delta R.T.: 0.000 min  
Response: 448032053  
Conc: 54.73 ng/ml

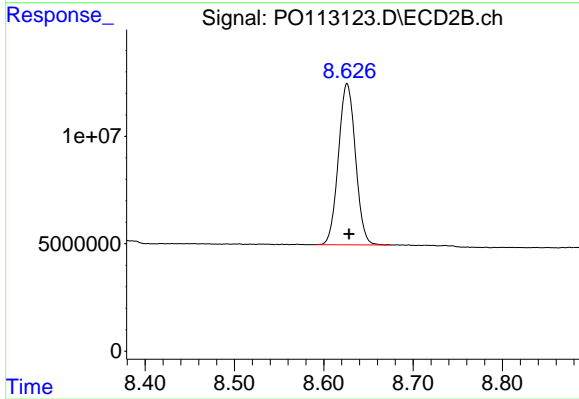
Instrument :  
ECD\_O  
ClientSampleId :  
AR1248CCC500



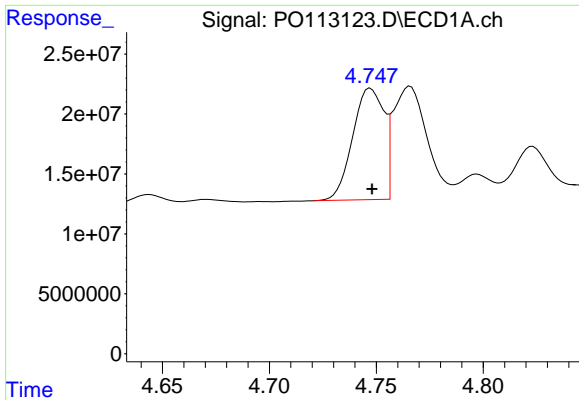
#1 Tetrachloro-m-xylene  
R.T.: 3.655 min  
Delta R.T.: 0.000 min  
Response: 262188154  
Conc: 51.81 ng/ml



#2 Decachlorobiphenyl  
R.T.: 8.680 min  
Delta R.T.: -0.001 min  
Response: 366451719  
Conc: 52.87 ng/ml



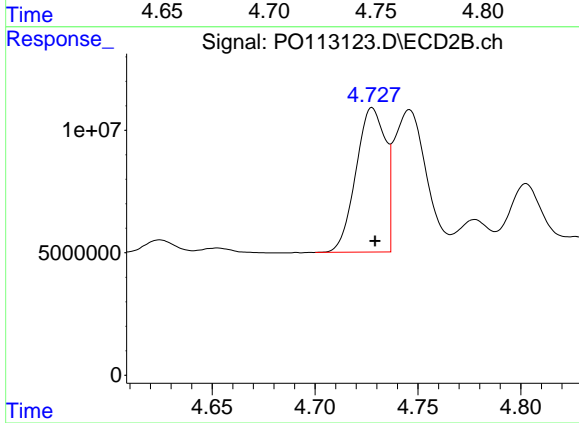
#2 Decachlorobiphenyl  
R.T.: 8.626 min  
Delta R.T.: -0.002 min  
Response: 99309654  
Conc: 52.41 ng/ml



#21 AR-1248-1

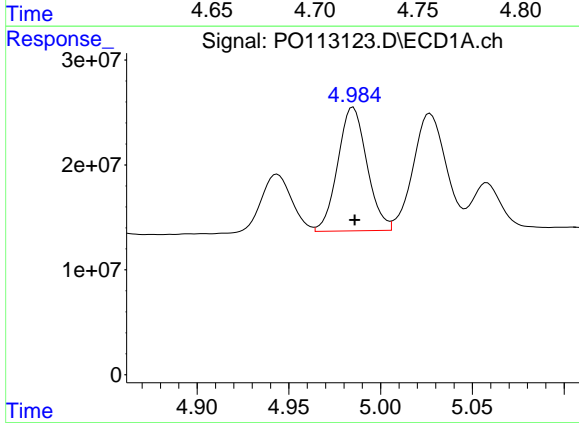
R.T.: 4.747 min  
 Delta R.T.: 0.000 min  
 Response: 94366774  
 Conc: 540.89 ng/ml

Instrument :  
 ECD\_O  
 ClientSampleId :  
 AR1248CCC500



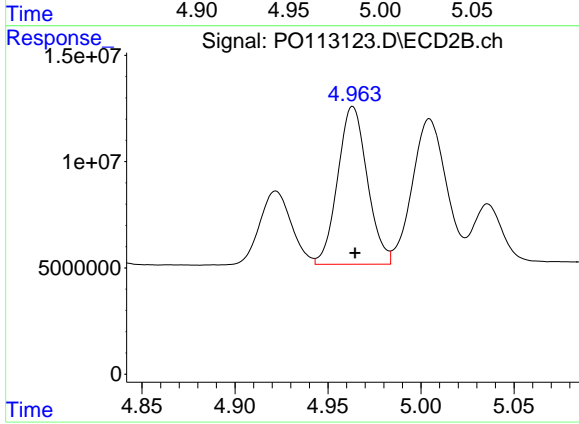
#21 AR-1248-1

R.T.: 4.728 min  
 Delta R.T.: -0.001 min  
 Response: 58543866  
 Conc: 525.00 ng/ml



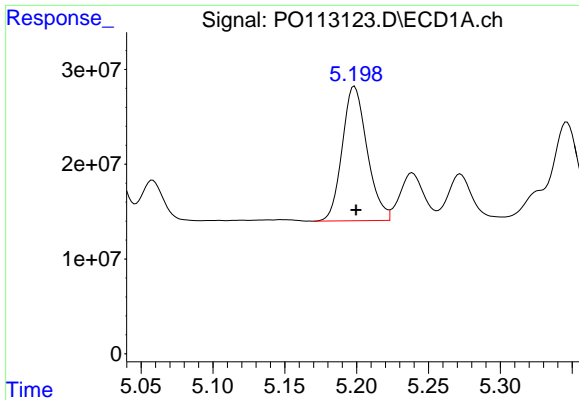
#22 AR-1248-2

R.T.: 4.985 min  
 Delta R.T.: 0.000 min  
 Response: 130439778  
 Conc: 539.31 ng/ml



#22 AR-1248-2

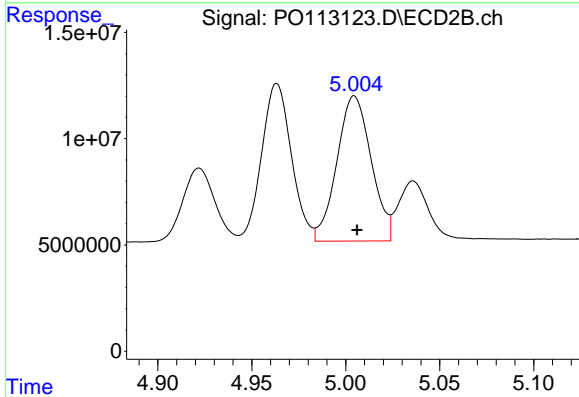
R.T.: 4.963 min  
 Delta R.T.: -0.001 min  
 Response: 82225515  
 Conc: 511.67 ng/ml



#23 AR-1248-3

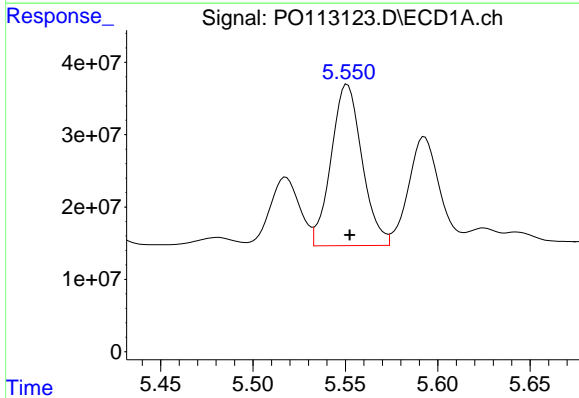
R.T.: 5.199 min  
 Delta R.T.: -0.001 min  
 Response: 170521281  
 Conc: 534.78 ng/ml

Instrument :  
 ECD\_O  
 ClientSampleId :  
 AR1248CCC500



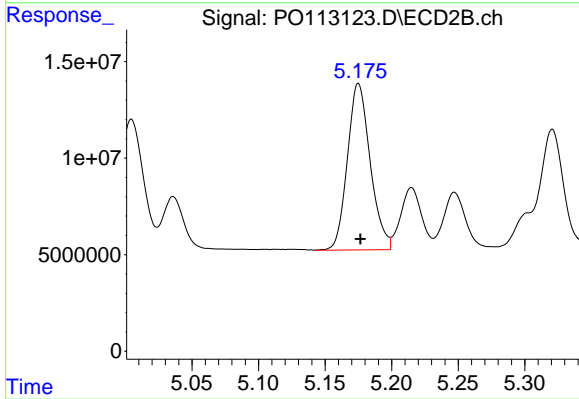
#23 AR-1248-3

R.T.: 5.005 min  
 Delta R.T.: -0.001 min  
 Response: 86772779  
 Conc: 511.45 ng/ml



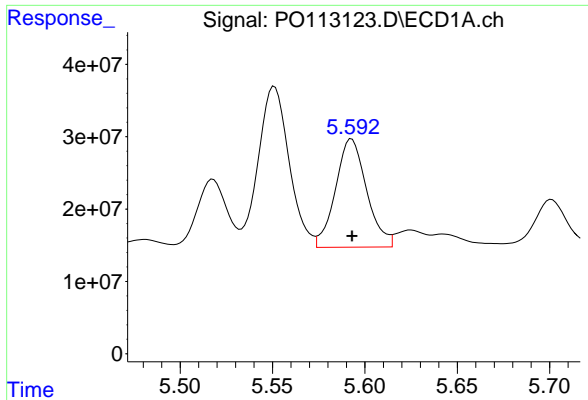
#24 AR-1248-4

R.T.: 5.551 min  
 Delta R.T.: -0.001 min  
 Response: 260127347  
 Conc: 520.67 ng/ml



#24 AR-1248-4

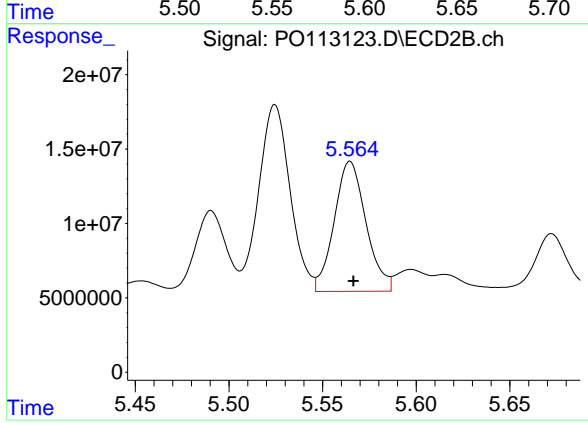
R.T.: 5.175 min  
 Delta R.T.: -0.002 min  
 Response: 102871277  
 Conc: 516.37 ng/ml



#25 AR-1248-5

R.T.: 5.593 min  
 Delta R.T.: 0.000 min  
 Response: 175988778  
 Conc: 515.35 ng/ml

Instrument :  
 ECD\_O  
 ClientSampleId :  
 AR1248CCC500



#25 AR-1248-5

R.T.: 5.565 min  
 Delta R.T.: -0.002 min  
 Response: 103363935  
 Conc: 486.89 ng/ml