

Data Path : Z:\pestpcbsrv\HPCHEM1\ECD_0\Data\P0082125\
 Data File : PO113124.D
 Signal(s) : Signal #1: ECD1A.ch Signal #2: ECD2B.ch
 Acq On : 21 Aug 2025 12:16
 Operator : YP/AJ
 Sample : AR1254CCC500
 Misc :
 ALS Vial : 6 Sample Multiplier: 1

Instrument :
 ECD_0
 ClientSampleId :
 AR1254CCC500

Integration File signal 1: autoint1.e
 Integration File signal 2: autoint2.e
 Quant Time: Aug 21 12:51:05 2025
 Quant Method : Z:\pestpcbsrv\HPCHEM1\ECD_0\methods\P0081825.M
 Quant Title : GC EXTRACTABLES
 QLast Update : Tue Aug 19 06:08:32 2025
 Response via : Initial Calibration
 Integrator: ChemStation

Volume Inj. : 2 µl
 Signal #1 Phase : ZB-MR1 Signal #2 Phase: ZB-MR2
 Signal #1 Info : 30Mx0.32mmx 0.50µ Signal #2 Info : 30M x 0.32mm x 0.25µm

Compound	RT#1	RT#2	Resp#1	Resp#2	ng/ml	ng/ml

System Monitoring Compounds						
1) SA Tetrachlo...	3.663	3.655	450.5E6	263.7E6	55.029	52.116
2) SA Decachlor...	8.681	8.627	372.9E6	100.9E6	53.791	53.274
Target Compounds						
26) L6 AR-1254-1	5.552	5.525	286.5E6	161.0E6	530.632	510.617
27) L6 AR-1254-2	5.701	5.672	260.4E6	141.6E6	527.751	504.935
28) L6 AR-1254-3	6.104	6.073	397.0E6	212.3E6	537.300	509.148
29) L6 AR-1254-4	6.334	6.301	287.3E6	134.1E6	515.776	487.930
30) L6 AR-1254-5	6.752	6.716	376.8E6	171.5E6	537.496	479.816

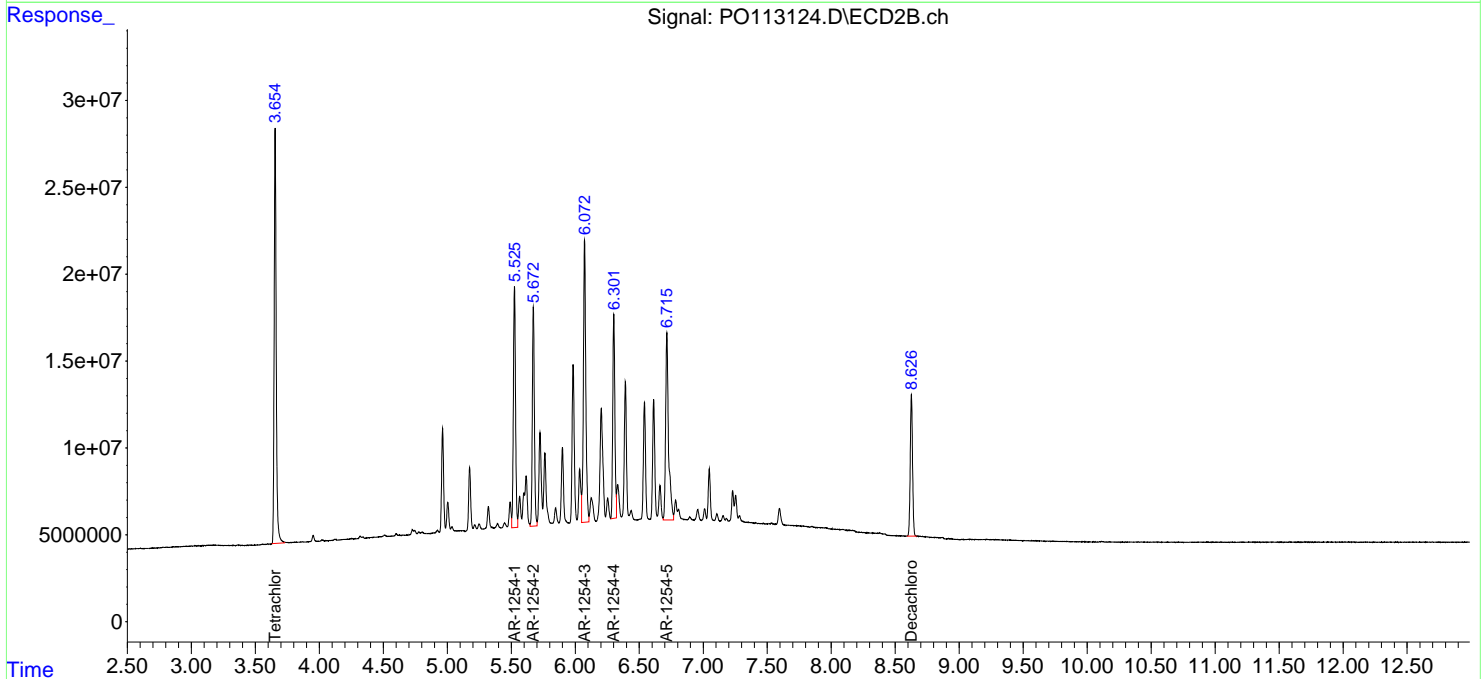
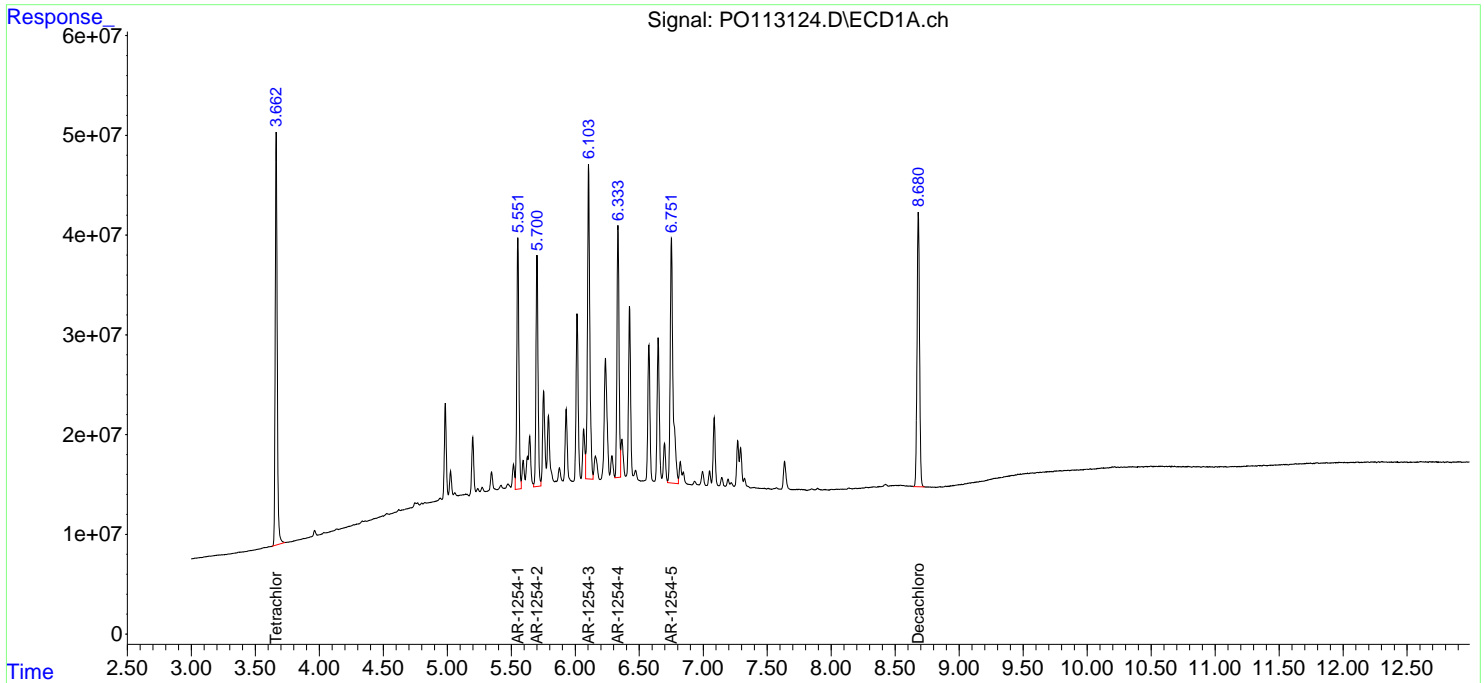
(f)=RT Delta > 1/2 Window (#)=Amounts differ by > 25% (m)=manual int.

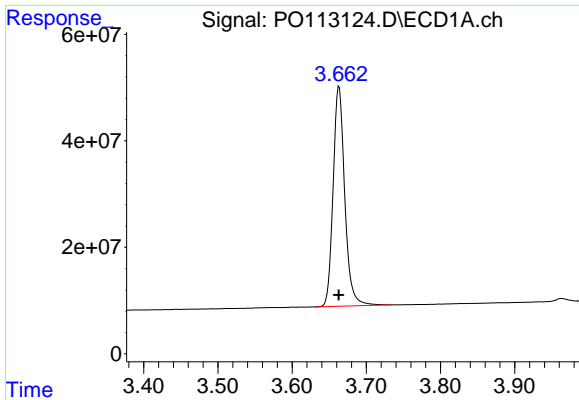
Data Path : Z:\pestpcbsrv\HPCHEM1\ECD_O\Data\PO082125\
 Data File : PO113124.D
 Signal(s) : Signal #1: ECD1A.ch Signal #2: ECD2B.ch
 Acq On : 21 Aug 2025 12:16
 Operator : YP/AJ
 Sample : AR1254CCC500
 Misc :
 ALS Vial : 6 Sample Multiplier: 1

Instrument :
 ECD_O
 ClientSampleId :
 AR1254CCC500

Integration File signal 1: autoint1.e
 Integration File signal 2: autoint2.e
 Quant Time: Aug 21 12:51:05 2025
 Quant Method : Z:\pestpcbsrv\HPCHEM1\ECD_O\methods\PO081825.M
 Quant Title : GC EXTRACTABLES
 QLast Update : Tue Aug 19 06:08:32 2025
 Response via : Initial Calibration
 Integrator: ChemStation

Volume Inj. : 2 µl
 Signal #1 Phase : ZB-MR1 Signal #2 Phase: ZB-MR2
 Signal #1 Info : 30Mx0.32mmx 0.50µm Signal #2 Info : 30M x 0.32mm x 0.25µm

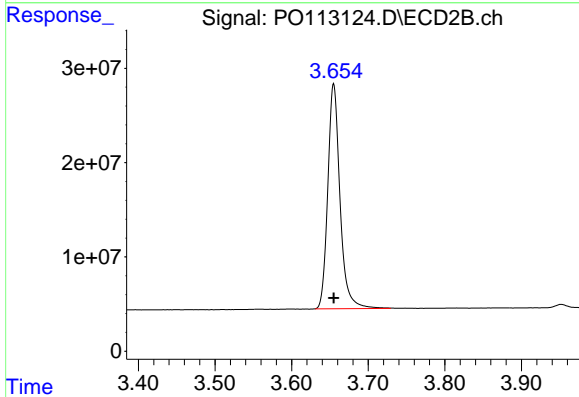




#1 Tetrachloro-m-xylene

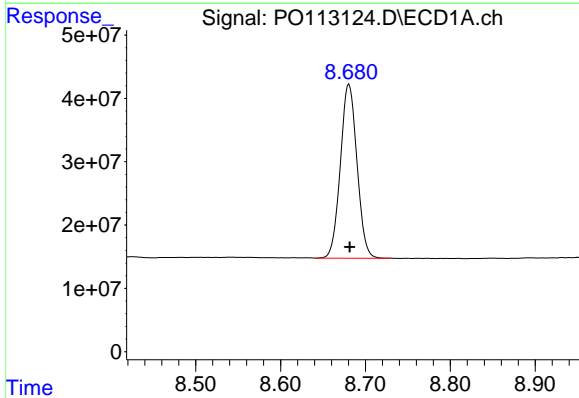
R.T.: 3.663 min
 Delta R.T.: 0.000 min
 Response: 450501779
 Conc: 55.03 ng/ml

Instrument :
 ECD_O
 ClientSampleId :
 AR1254CCC500



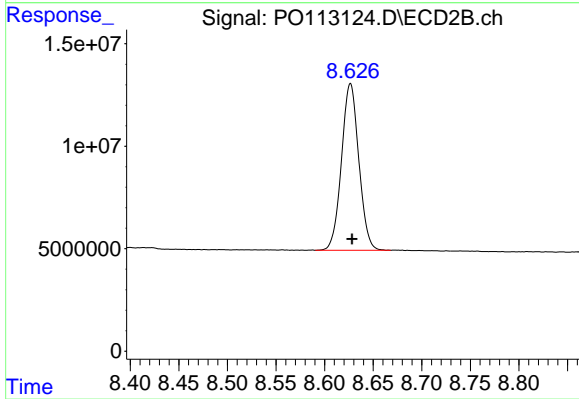
#1 Tetrachloro-m-xylene

R.T.: 3.655 min
 Delta R.T.: 0.000 min
 Response: 263740141
 Conc: 52.12 ng/ml



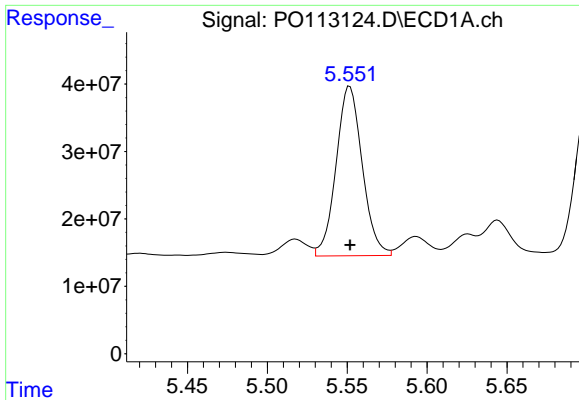
#2 Decachlorobiphenyl

R.T.: 8.681 min
 Delta R.T.: 0.000 min
 Response: 372850113
 Conc: 53.79 ng/ml



#2 Decachlorobiphenyl

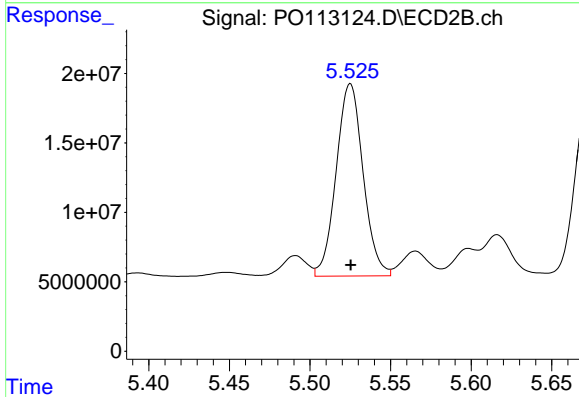
R.T.: 8.627 min
 Delta R.T.: -0.002 min
 Response: 100946955
 Conc: 53.27 ng/ml



#26 AR-1254-1

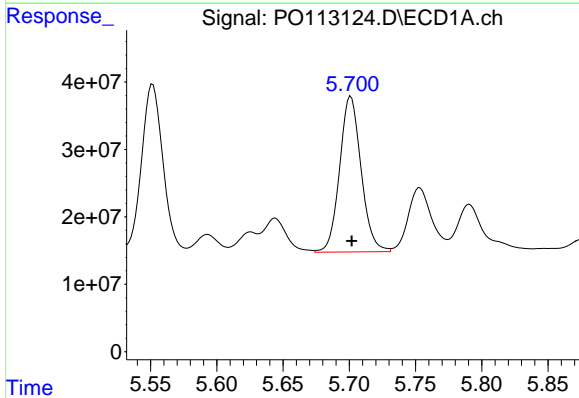
R.T.: 5.552 min
 Delta R.T.: 0.000 min
 Response: 286530034
 Conc: 530.63 ng/ml

Instrument :
 ECD_O
 ClientSampleId :
 AR1254CCC500



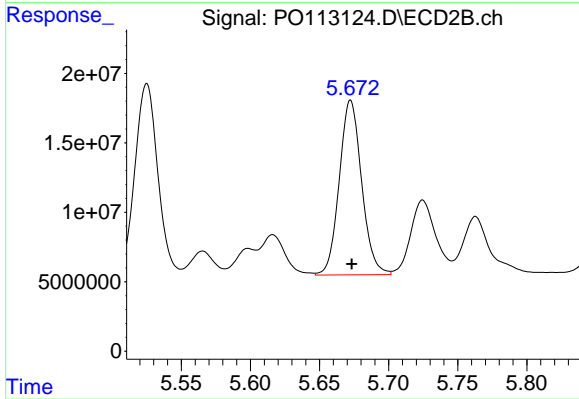
#26 AR-1254-1

R.T.: 5.525 min
 Delta R.T.: 0.000 min
 Response: 161024877
 Conc: 510.62 ng/ml



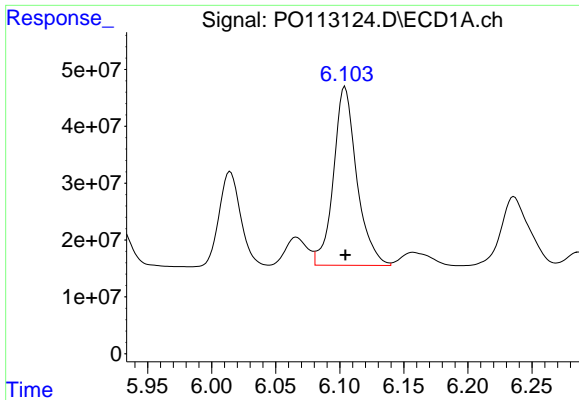
#27 AR-1254-2

R.T.: 5.701 min
 Delta R.T.: 0.000 min
 Response: 260420748
 Conc: 527.75 ng/ml



#27 AR-1254-2

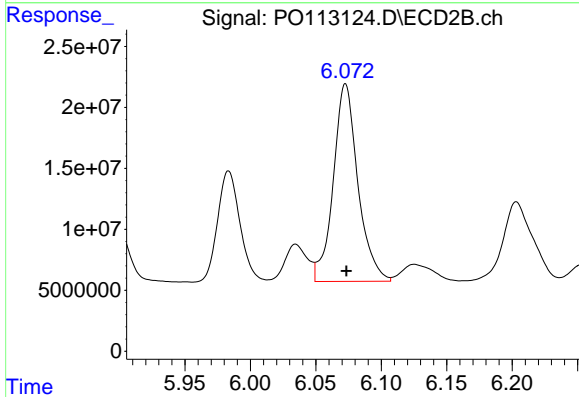
R.T.: 5.672 min
 Delta R.T.: 0.000 min
 Response: 141553015
 Conc: 504.93 ng/ml



#28 AR-1254-3

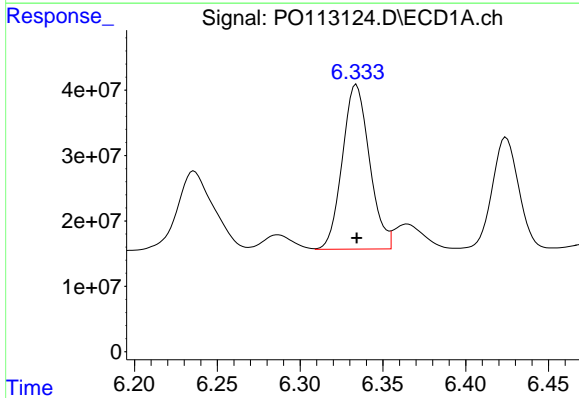
R.T.: 6.104 min
 Delta R.T.: 0.000 min
 Response: 396998427
 Conc: 537.30 ng/ml

Instrument :
 ECD_O
 ClientSampleId :
 AR1254CCC500



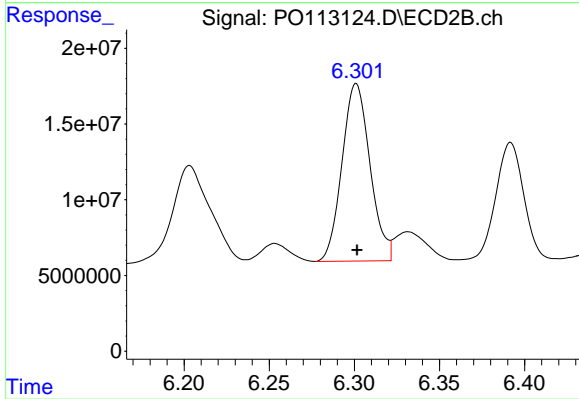
#28 AR-1254-3

R.T.: 6.073 min
 Delta R.T.: 0.000 min
 Response: 212275403
 Conc: 509.15 ng/ml



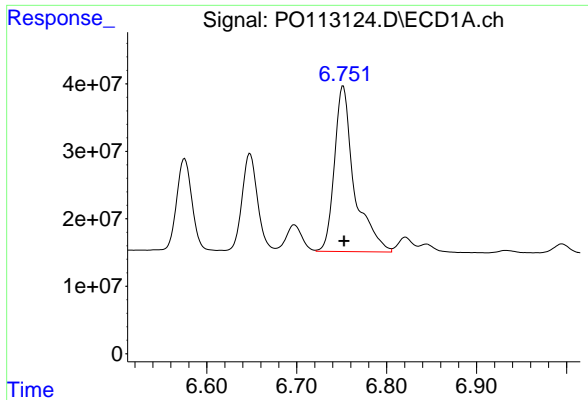
#29 AR-1254-4

R.T.: 6.334 min
 Delta R.T.: 0.000 min
 Response: 287287184
 Conc: 515.78 ng/ml



#29 AR-1254-4

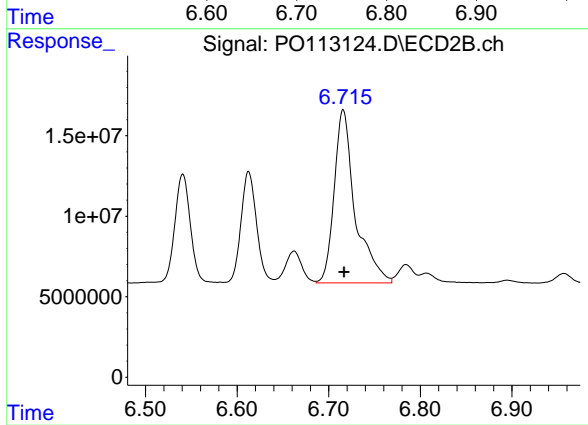
R.T.: 6.301 min
 Delta R.T.: 0.000 min
 Response: 134100471
 Conc: 487.93 ng/ml



#30 AR-1254-5

R.T.: 6.752 min
Delta R.T.: 0.000 min
Response: 376770282
Conc: 537.50 ng/ml

Instrument :
ECD_O
ClientSampleId :
AR1254CCC500



#30 AR-1254-5

R.T.: 6.716 min
Delta R.T.: 0.000 min
Response: 171529848
Conc: 479.82 ng/ml