

Data Path : Z:\pestpcbsrv\HPCHEM1\ECD_0\Data\P0082125\
 Data File : P0113127.D
 Signal(s) : Signal #1: ECD1A.ch Signal #2: ECD2B.ch
 Acq On : 21 Aug 2025 13:11
 Operator : YP/AJ
 Sample : Q2896-09
 Misc :
 ALS Vial : 10 Sample Multiplier: 1

Instrument :
 ECD_0
 ClientSampleId :
 9

Manual Integrations
APPROVED

Reviewed By :Yogesh Patel 08/22/2025
 Supervised By :mohammad ahmed 08/25/2025

Integration File signal 1: autoint1.e
 Integration File signal 2: autoint2.e
 Quant Time: Aug 21 13:36:26 2025
 Quant Method : Z:\pestpcbsrv\HPCHEM1\ECD_0\methods\P0081825.M
 Quant Title : GC EXTRACTABLES
 QLast Update : Tue Aug 19 06:08:32 2025
 Response via : Initial Calibration
 Integrator: ChemStation

Volume Inj. : 2 µl
 Signal #1 Phase : ZB-MR1 Signal #2 Phase: ZB-MR2
 Signal #1 Info : 30Mx0.32mmx 0.50µ Signal #2 Info : 30M x 0.32mm x 0.25µm

Compound	RT#1	RT#2	Resp#1	Resp#2	ng/ml	ng/ml

System Monitoring Compounds						
1) SA Tetrachlo...	3.664	3.654	116.3E6	68893146	14.211	13.613m
2) SA Decachlor...	8.683	8.628	66982170	18786722	9.664	9.915m

Target Compounds

(f)=RT Delta > 1/2 Window (#)=Amounts differ by > 25% (m)=manual int.

Data Path : Z:\pestpcbsrv\HPCHEM1\ECD_0\Data\PO082125\
 Data File : PO113127.D
 Signal(s) : Signal #1: ECD1A.ch Signal #2: ECD2B.ch
 Acq On : 21 Aug 2025 13:11
 Operator : YP/AJ
 Sample : Q2896-09
 Misc :
 ALS Vial : 10 Sample Multiplier: 1

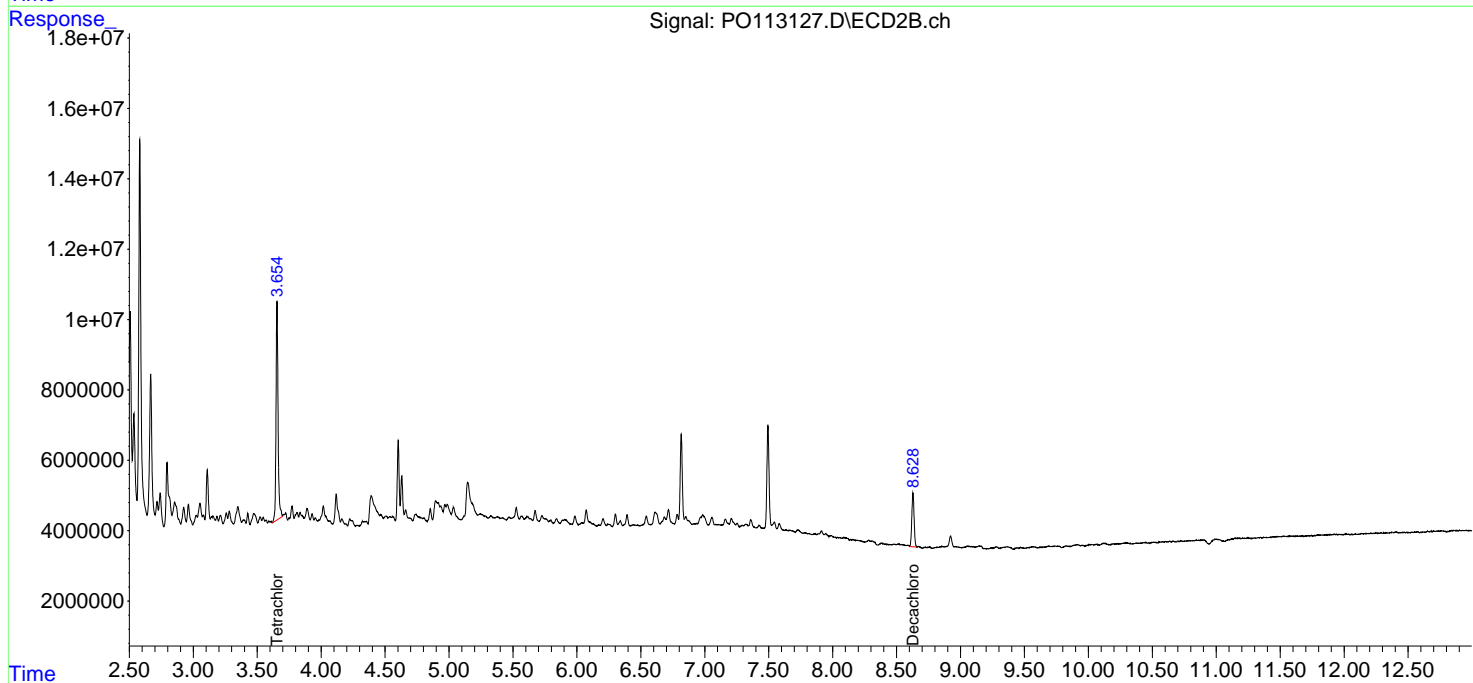
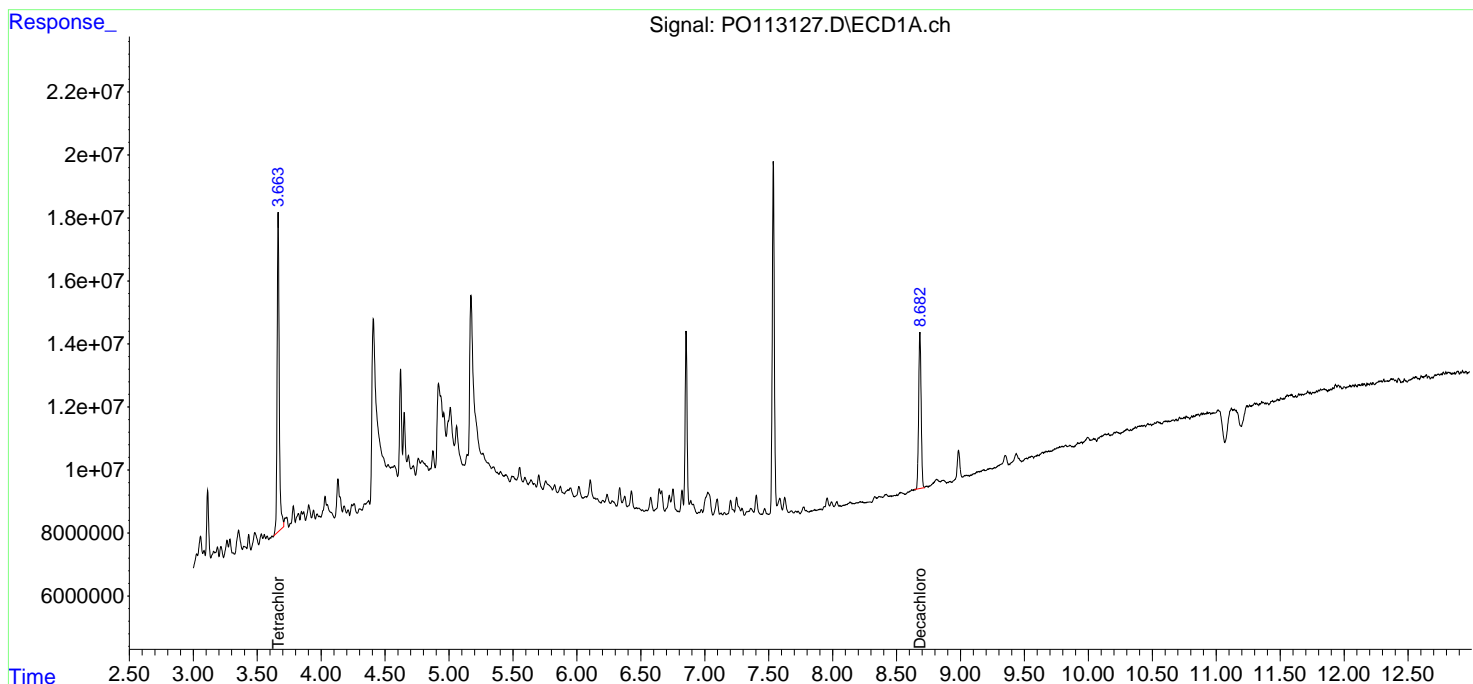
Instrument :
 ECD_0
 ClientSampleId :
 9

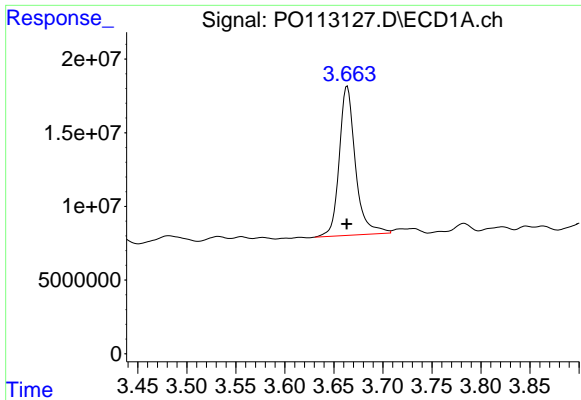
Manual Integrations
 APPROVED

Reviewed By :Yogesh Patel 08/22/2025
 Supervised By :mohammad ahmed 08/25/2025

Integration File signal 1: autoint1.e
 Integration File signal 2: autoint2.e
 Quant Time: Aug 21 13:36:26 2025
 Quant Method : Z:\pestpcbsrv\HPCHEM1\ECD_0\methods\PO081825.M
 Quant Title : GC EXTRACTABLES
 QLast Update : Tue Aug 19 06:08:32 2025
 Response via : Initial Calibration
 Integrator: ChemStation

Volume Inj. : 2 µl
 Signal #1 Phase : ZB-MR1 Signal #2 Phase: ZB-MR2
 Signal #1 Info : 30Mx0.32mmx 0.50µm Signal #2 Info : 30M x 0.32mm x 0.25µm



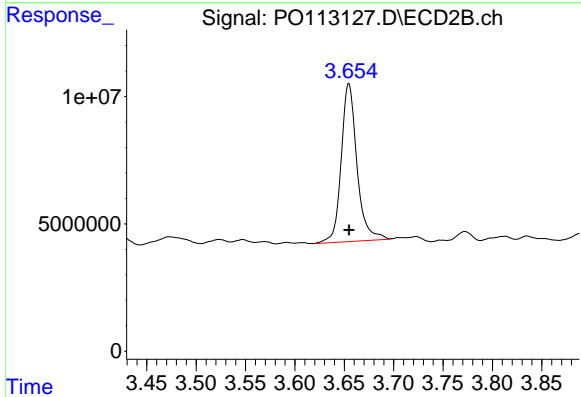


#1 Tetrachloro-m-xylene
 R.T.: 3.664 min
 Delta R.T.: 0.000 min
 Response: 116340090
 Conc: 14.21 ng/ml

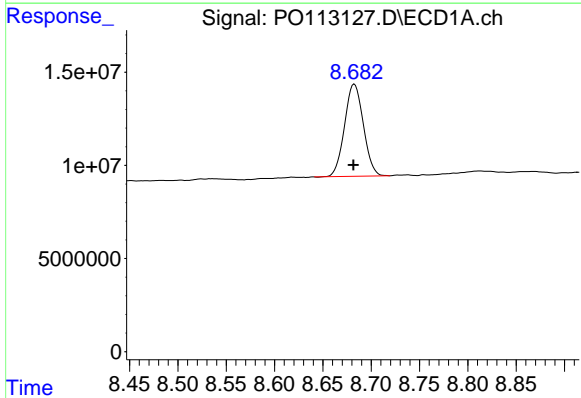
Instrument :
 ECD_O
 ClientSampleId :
 9

Manual Integrations
 APPROVED

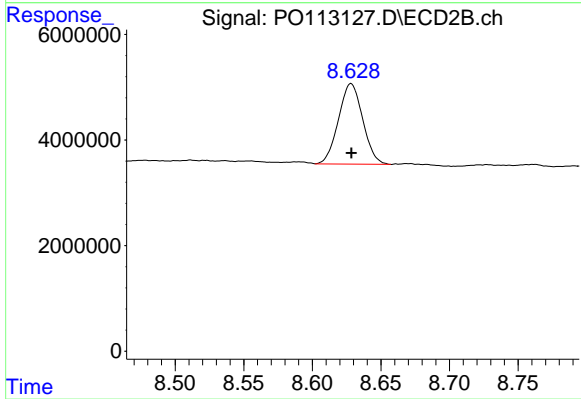
Reviewed By :Yogesh Patel 08/22/2025
 Supervised By :mohammad ahmed 08/25/2025



#1 Tetrachloro-m-xylene
 R.T.: 3.654 min
 Delta R.T.: 0.000 min
 Response: 68893146
 Conc: 13.61 ng/ml m



#2 Decachlorobiphenyl
 R.T.: 8.683 min
 Delta R.T.: 0.001 min
 Response: 66982170
 Conc: 9.66 ng/ml



#2 Decachlorobiphenyl
 R.T.: 8.628 min
 Delta R.T.: 0.000 min
 Response: 18786722
 Conc: 9.91 ng/ml m