

Data Path : Z:\pestpcbsrv\HPCHEM1\ECD\_0\Data\P0082125\  
 Data File : P0113129.D  
 Signal(s) : Signal #1: ECD1A.ch Signal #2: ECD2B.ch  
 Acq On : 21 Aug 2025 13:48  
 Operator : YP/AJ  
 Sample : Q2914-01  
 Misc :  
 ALS Vial : 12 Sample Multiplier: 1

Instrument :  
 ECD\_0  
 ClientSampleId :  
 K262-9A

Integration File signal 1: autoint1.e  
 Integration File signal 2: autoint2.e  
 Quant Time: Aug 21 14:17:23 2025  
 Quant Method : Z:\pestpcbsrv\HPCHEM1\ECD\_0\methods\P0081825.M  
 Quant Title : GC EXTRACTABLES  
 QLast Update : Tue Aug 19 06:08:32 2025  
 Response via : Initial Calibration  
 Integrator: ChemStation

Volume Inj. : 2 µl  
 Signal #1 Phase : ZB-MR1 Signal #2 Phase: ZB-MR2  
 Signal #1 Info : 30Mx0.32mmx 0.50µ Signal #2 Info : 30M x 0.32mm x 0.25µm

Compound	RT#1	RT#2	Resp#1	Resp#2	ng/ml	ng/ml
-----						
System Monitoring Compounds						
1) SA Tetrachlo...	3.663	3.655	191.7E6	112.2E6	23.413	22.178
2) SA Decachlor...	8.677	8.623	288.0E6	81109350	41.555	42.805

Target Compounds

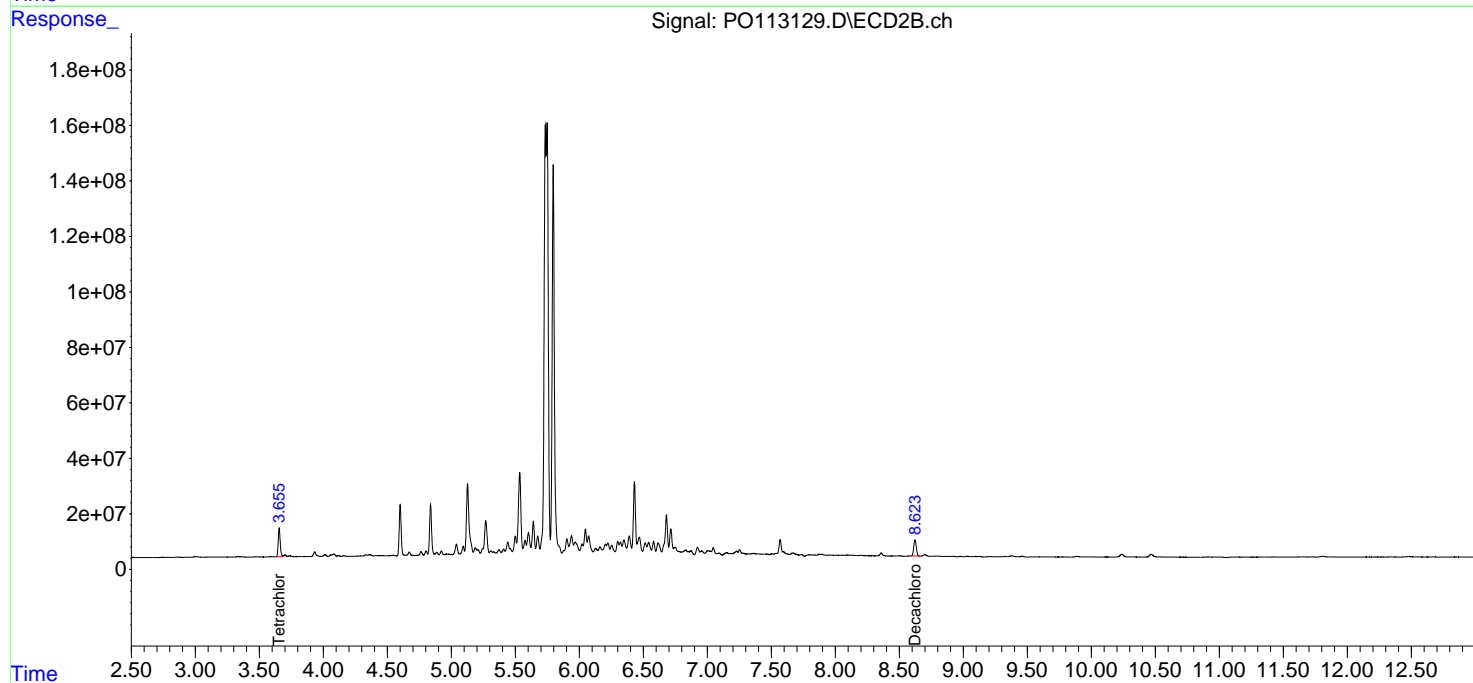
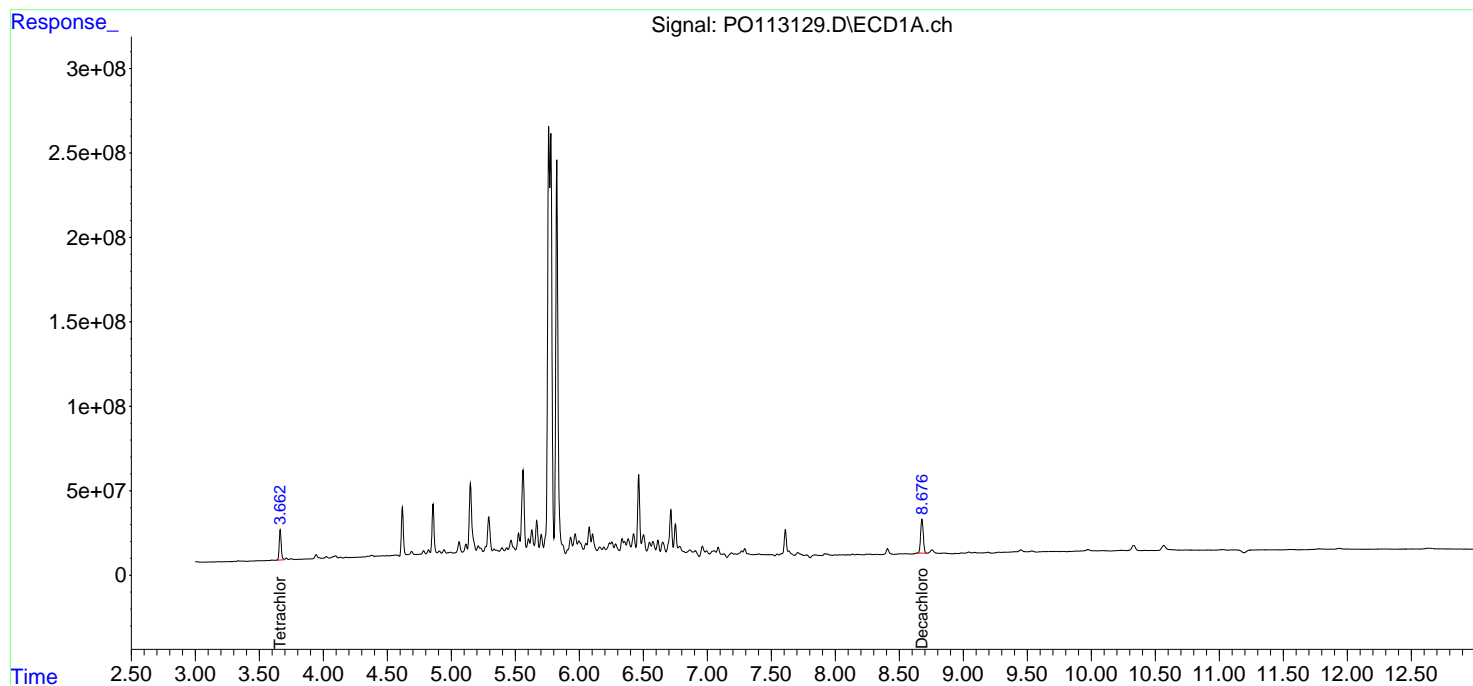
-----  
 (f)=RT Delta > 1/2 Window (#)=Amounts differ by > 25% (m)=manual int.

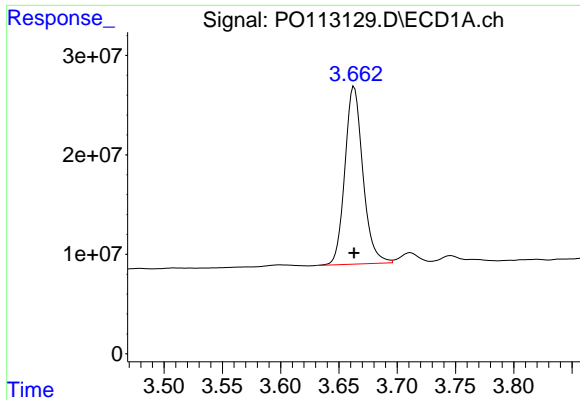
Data Path : Z:\pestpcbsrv\HPCHEM1\ECD\_0\Data\PO082125\  
Data File : PO113129.D  
Signal(s) : Signal #1: ECD1A.ch Signal #2: ECD2B.ch  
Acq On : 21 Aug 2025 13:48  
Operator : YP/AJ  
Sample : Q2914-01  
Misc :  
ALS Vial : 12 Sample Multiplier: 1

Instrument :  
ECD\_O  
ClientSampleId :  
K262-9A

Integration File signal 1: autoint1.e  
Integration File signal 2: autoint2.e  
Quant Time: Aug 21 14:17:23 2025  
Quant Method : Z:\pestpcbsrv\HPCHEM1\ECD\_0\methods\PO081825.M  
Quant Title : GC EXTRACTABLES  
QLast Update : Tue Aug 19 06:08:32 2025  
Response via : Initial Calibration  
Integrator: ChemStation

Volume Inj. : 2 µl  
Signal #1 Phase : ZB-MR1 Signal #2 Phase: ZB-MR2  
Signal #1 Info : 30Mx0.32mmx 0.50µ Signal #2 Info : 30M x 0.32mm x 0.25µm

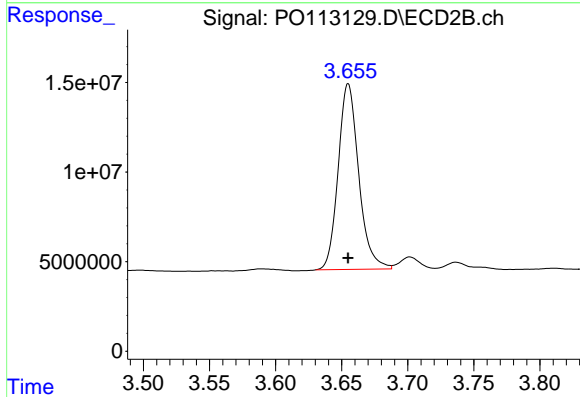




#1 Tetrachloro-m-xylene

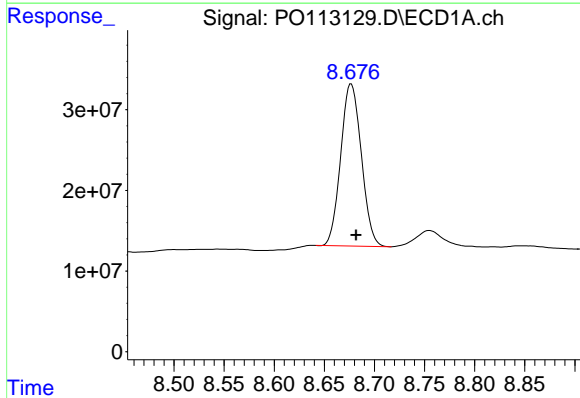
R.T.: 3.663 min  
 Delta R.T.: 0.000 min  
 Response: 191671160  
 Conc: 23.41 ng/ml

Instrument :  
 ECD\_O  
 ClientSampleId :  
 K262-9A



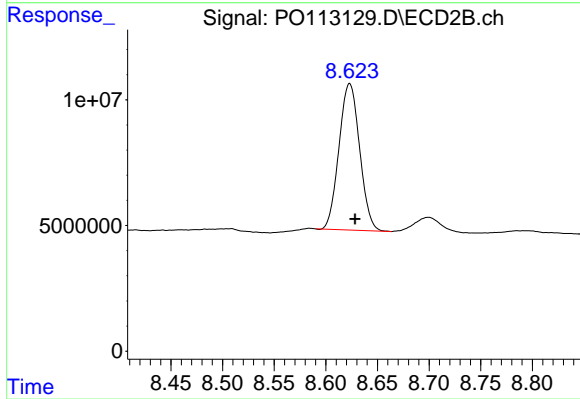
#1 Tetrachloro-m-xylene

R.T.: 3.655 min  
 Delta R.T.: 0.000 min  
 Response: 112236378  
 Conc: 22.18 ng/ml



#2 Decachlorobiphenyl

R.T.: 8.677 min  
 Delta R.T.: -0.005 min  
 Response: 288033559  
 Conc: 41.55 ng/ml



#2 Decachlorobiphenyl

R.T.: 8.623 min  
 Delta R.T.: -0.005 min  
 Response: 81109350  
 Conc: 42.81 ng/ml