

Data Path : Z:\pestpcbsrv\HPCHEM1\ECD\_0\Data\P0082125\  
 Data File : P0113131.D  
 Signal(s) : Signal #1: ECD1A.ch Signal #2: ECD2B.ch  
 Acq On : 21 Aug 2025 14:25  
 Operator : YP/AJ  
 Sample : Q2914-07  
 Misc :  
 ALS Vial : 14 Sample Multiplier: 1

Instrument :  
 ECD\_0  
 ClientSampleId :  
 K262-11A

Integration File signal 1: autoint1.e  
 Integration File signal 2: autoint2.e  
 Quant Time: Aug 21 15:13:42 2025  
 Quant Method : Z:\pestpcbsrv\HPCHEM1\ECD\_0\methods\P0081825.M  
 Quant Title : GC EXTRACTABLES  
 QLast Update : Tue Aug 19 06:08:32 2025  
 Response via : Initial Calibration  
 Integrator: ChemStation

Volume Inj. : 2 µl  
 Signal #1 Phase : ZB-MR1 Signal #2 Phase: ZB-MR2  
 Signal #1 Info : 30Mx0.32mmx 0.50µ Signal #2 Info : 30M x 0.32mm x 0.25µm

Compound	RT#1	RT#2	Resp#1	Resp#2	ng/ml	ng/ml
-----						
System Monitoring Compounds						
1) SA Tetrachlo...	3.663	3.655	193.8E6	113.6E6	23.673	22.457
2) SA Decachlor...	8.677	8.624	265.7E6	76242240	38.338	40.237

Target Compounds

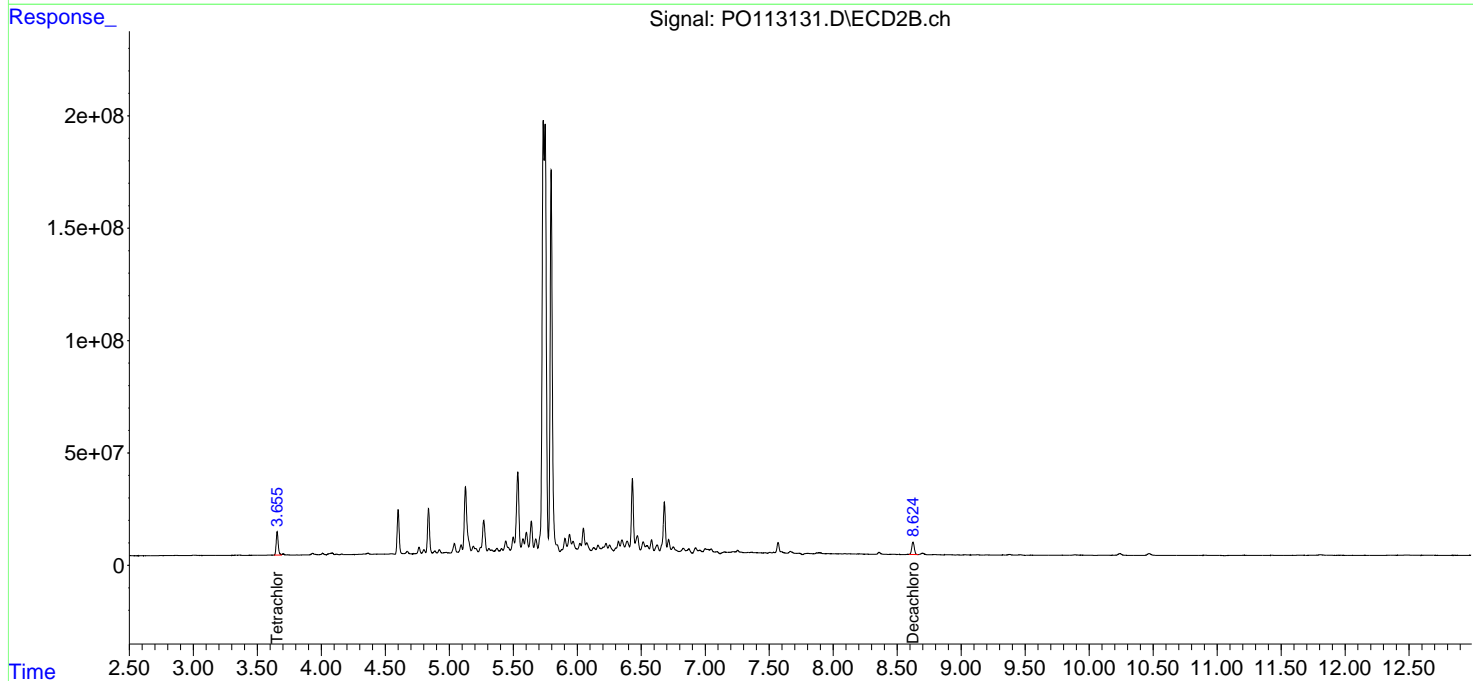
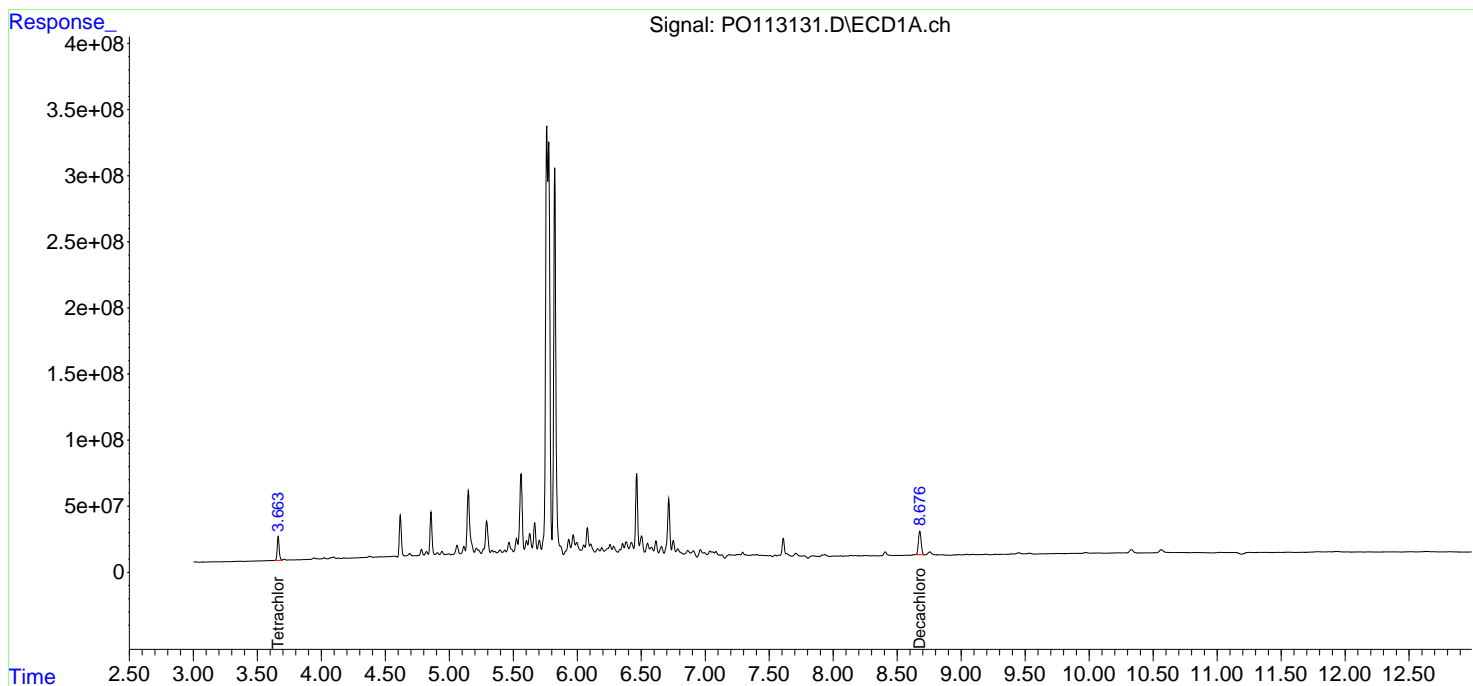
(f)=RT Delta > 1/2 Window (#)=Amounts differ by > 25% (m)=manual int.

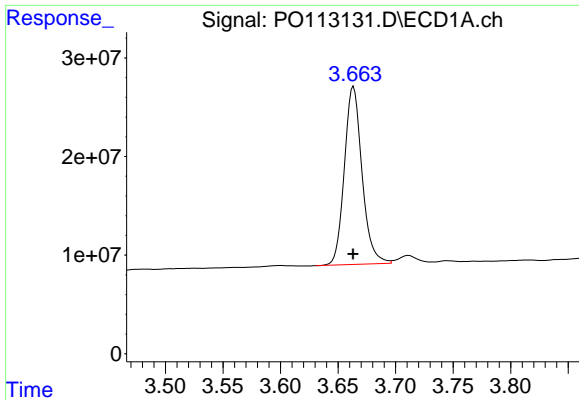
Data Path : Z:\pestpcbsrv\HPCHEM1\ECD\_0\Data\P0082125\  
 Data File : P0113131.D  
 Signal(s) : Signal #1: ECD1A.ch Signal #2: ECD2B.ch  
 Acq On : 21 Aug 2025 14:25  
 Operator : YP/AJ  
 Sample : Q2914-07  
 Misc :  
 ALS Vial : 14 Sample Multiplier: 1

Instrument :  
 ECD\_O  
 ClientSampleId :  
 K262-11A

Integration File signal 1: autoint1.e  
 Integration File signal 2: autoint2.e  
 Quant Time: Aug 21 15:13:42 2025  
 Quant Method : Z:\pestpcbsrv\HPCHEM1\ECD\_0\methods\P0081825.M  
 Quant Title : GC EXTRACTABLES  
 QLast Update : Tue Aug 19 06:08:32 2025  
 Response via : Initial Calibration  
 Integrator: ChemStation

Volume Inj. : 2 µl  
 Signal #1 Phase : ZB-MR1 Signal #2 Phase: ZB-MR2  
 Signal #1 Info : 30Mx0.32mmx 0.50µ Signal #2 Info : 30M x 0.32mm x 0.25µm

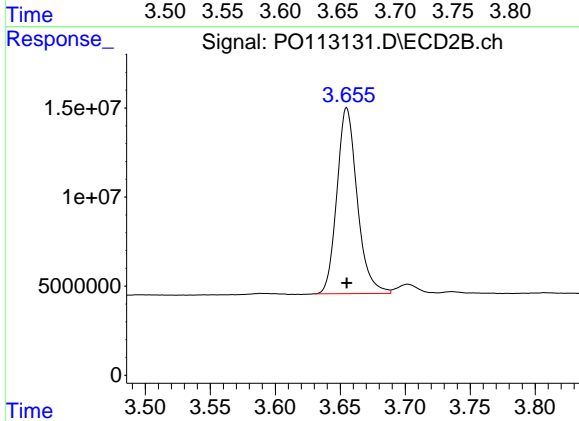




#1 Tetrachloro-m-xylene

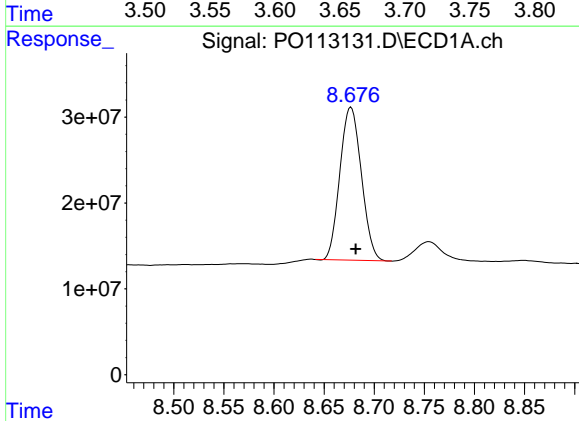
R.T.: 3.663 min  
 Delta R.T.: 0.000 min  
 Response: 193804658  
 Conc: 23.67 ng/ml

Instrument :  
 ECD\_O  
 ClientSampleId :  
 K262-11A



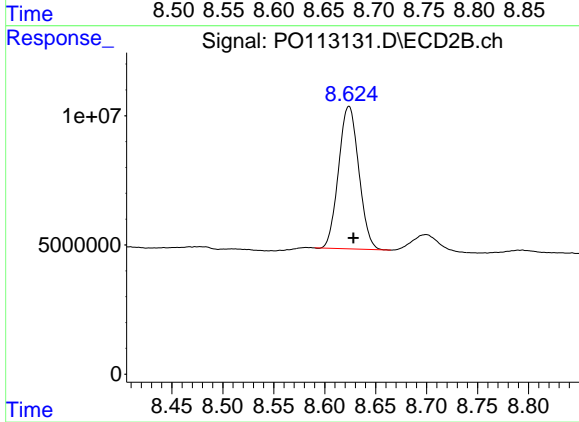
#1 Tetrachloro-m-xylene

R.T.: 3.655 min  
 Delta R.T.: 0.000 min  
 Response: 113646750  
 Conc: 22.46 ng/ml



#2 Decachlorobiphenyl

R.T.: 8.677 min  
 Delta R.T.: -0.005 min  
 Response: 265735435  
 Conc: 38.34 ng/ml



#2 Decachlorobiphenyl

R.T.: 8.624 min  
 Delta R.T.: -0.005 min  
 Response: 76242240  
 Conc: 40.24 ng/ml