

Data Path : Z:\pestpcbsrv\HPCHEM1\ECD\_0\Data\P0082125\  
 Data File : P0113133.D  
 Signal(s) : Signal #1: ECD1A.ch Signal #2: ECD2B.ch  
 Acq On : 21 Aug 2025 15:02  
 Operator : YP/AJ  
 Sample : Q2914-13  
 Misc :  
 ALS Vial : 16 Sample Multiplier: 1

**Instrument :**  
 ECD\_0  
**ClientSampleId :**  
 K262-13A

**Manual Integrations**  
**APPROVED**

Reviewed By :Yogesh Patel 08/22/2025  
 Supervised By :mohammad ahmed 08/25/2025

Integration File signal 1: autoint1.e  
 Integration File signal 2: autoint2.e  
 Quant Time: Aug 21 15:17:06 2025  
 Quant Method : Z:\pestpcbsrv\HPCHEM1\ECD\_0\methods\P0081825.M  
 Quant Title : GC EXTRACTABLES  
 QLast Update : Tue Aug 19 06:08:32 2025  
 Response via : Initial Calibration  
 Integrator: ChemStation

Volume Inj. : 2 µl  
 Signal #1 Phase : ZB-MR1 Signal #2 Phase: ZB-MR2  
 Signal #1 Info : 30Mx0.32mmx 0.50µ Signal #2 Info : 30M x 0.32mm x 0.25µm

Compound	RT#1	RT#2	Resp#1	Resp#2	ng/ml	ng/ml
-----						
System Monitoring Compounds						
1) SA Tetrachlo...	3.662	3.655	179.3E6	109.1E6	21.898m	21.566
2) SA Decachlor...	8.689	8.632	267.1E6	76147653	38.533m	40.187m

Target Compounds

(f)=RT Delta > 1/2 Window (#)=Amounts differ by > 25% (m)=manual int.

Data Path : Z:\pestpcbsrv\HPCHEM1\ECD\_0\Data\P0082125\  
Data File : P0113133.D  
Signal(s) : Signal #1: ECD1A.ch Signal #2: ECD2B.ch  
Acq On : 21 Aug 2025 15:02  
Operator : YP/AJ  
Sample : Q2914-13  
Misc :  
ALS Vial : 16 Sample Multiplier: 1

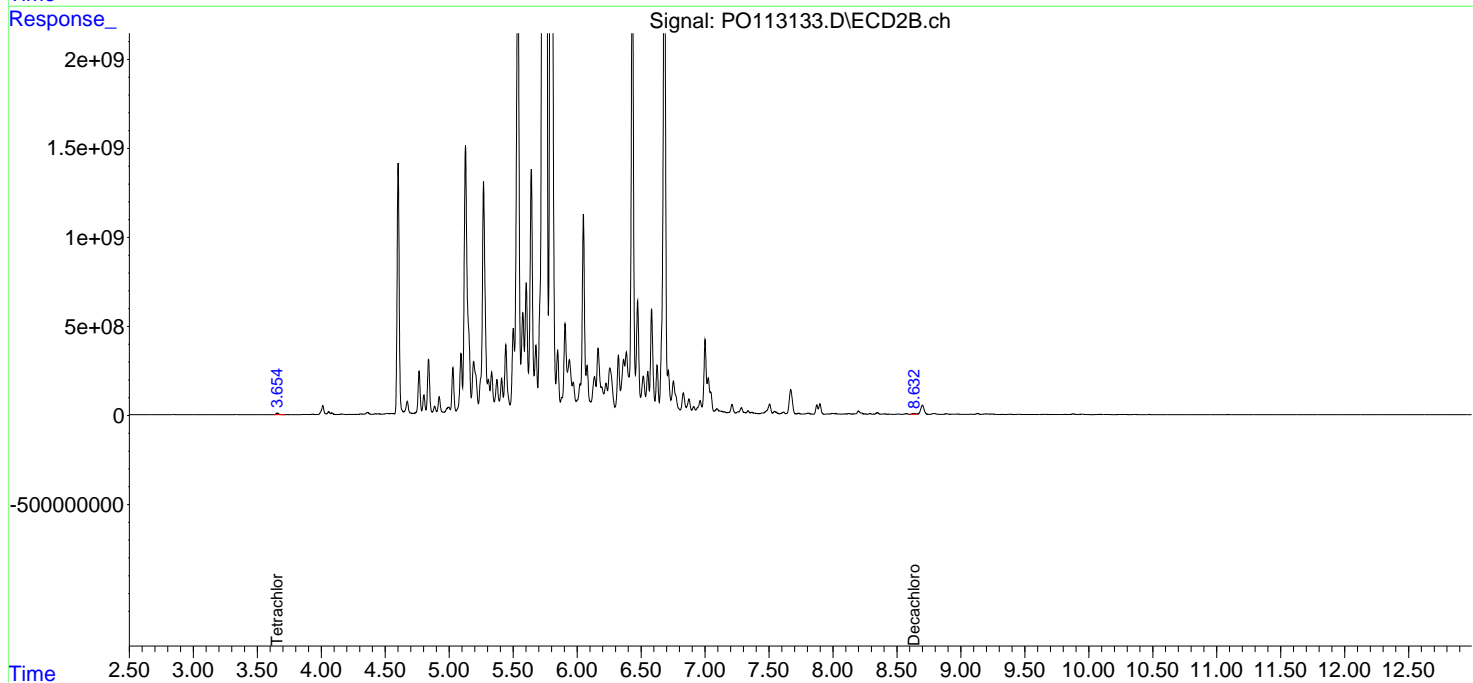
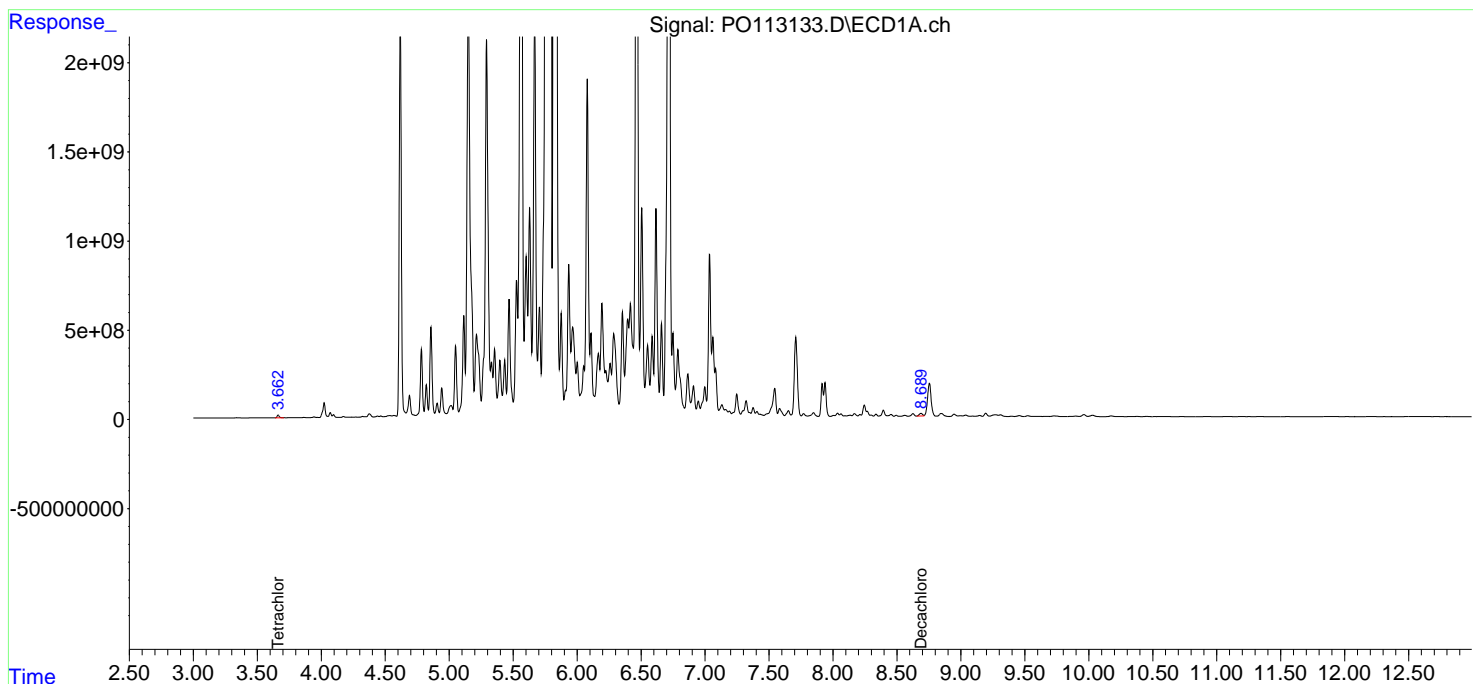
Instrument :  
ECD\_O  
ClientSampleId :  
K262-13A

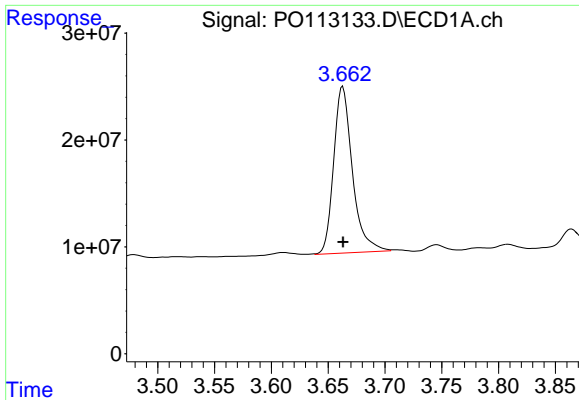
Manual Integrations  
APPROVED

Reviewed By :Yogesh Patel 08/22/2025  
Supervised By :mohammad ahmed 08/25/2025

Integration File signal 1: autoint1.e  
Integration File signal 2: autoint2.e  
Quant Time: Aug 21 15:17:06 2025  
Quant Method : Z:\pestpcbsrv\HPCHEM1\ECD\_0\methods\P0081825.M  
Quant Title : GC EXTRACTABLES  
QLast Update : Tue Aug 19 06:08:32 2025  
Response via : Initial Calibration  
Integrator: ChemStation

Volume Inj. : 2 µl  
Signal #1 Phase : ZB-MR1 Signal #2 Phase: ZB-MR2  
Signal #1 Info : 30Mx0.32mmx 0.50µ Signal #2 Info : 30M x 0.32mm x 0.25µm



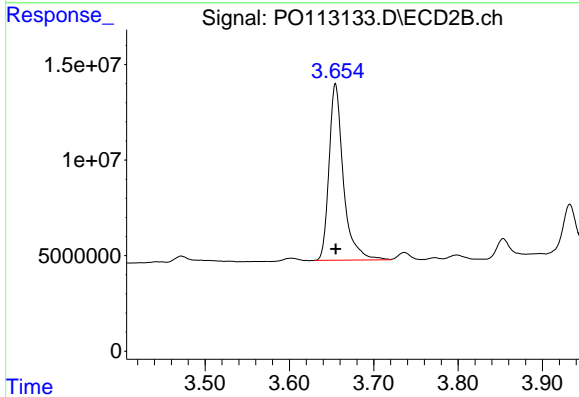


#1 Tetrachloro-m-xylene  
 R.T.: 3.662 min  
 Delta R.T.: 0.000 min  
 Response: 179270399  
 Conc: 21.90 ng/ml

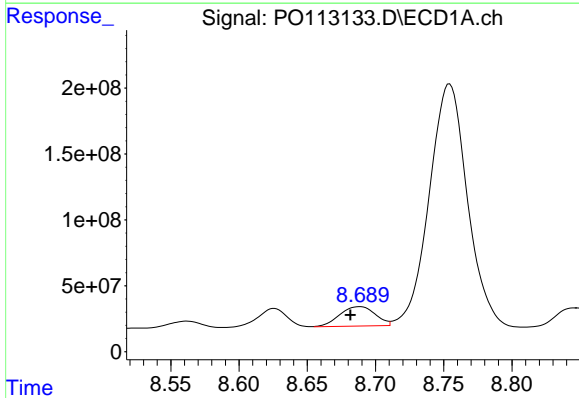
Instrument :  
 ECD\_O  
 ClientSampleId :  
 K262-13A

Manual Integrations  
 APPROVED

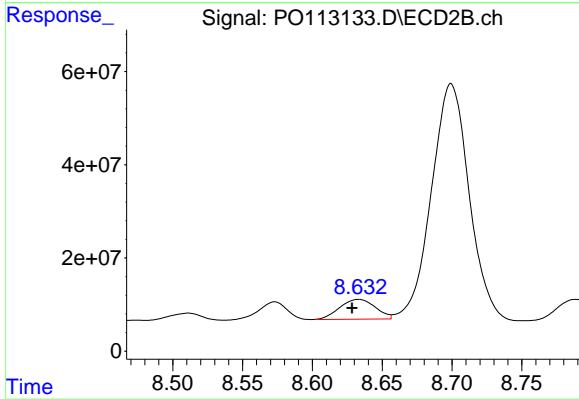
Reviewed By :Yogesh Patel 08/22/2025  
 Supervised By :mohammad ahmed 08/25/2025



#1 Tetrachloro-m-xylene  
 R.T.: 3.655 min  
 Delta R.T.: 0.000 min  
 Response: 109136258  
 Conc: 21.57 ng/ml



#2 Decachlorobiphenyl  
 R.T.: 8.689 min  
 Delta R.T.: 0.007 min  
 Response: 267085663  
 Conc: 38.53 ng/ml m



#2 Decachlorobiphenyl  
 R.T.: 8.632 min  
 Delta R.T.: 0.004 min  
 Response: 76147653  
 Conc: 40.19 ng/ml m