

Data Path : Z:\pestpcbsrv\HPCHEM1\ECD_0\Data\P0082125\
 Data File : P0113134.D
 Signal(s) : Signal #1: ECD1A.ch Signal #2: ECD2B.ch
 Acq On : 21 Aug 2025 15:20
 Operator : YP/AJ
 Sample : Q2914-13MS
 Misc :
 ALS Vial : 17 Sample Multiplier: 1

Instrument :
 ECD_0
ClientSampleId :
 K262-13AMS

Manual Integrations
APPROVED

Reviewed By :Yogesh Patel 08/22/2025
 Supervised By :mohammad ahmed 08/25/2025

Integration File signal 1: autoint1.e
 Integration File signal 2: autoint2.e
 Quant Time: Aug 22 00:26:27 2025
 Quant Method : Z:\pestpcbsrv\HPCHEM1\ECD_0\methods\P0081825.M
 Quant Title : GC EXTRACTABLES
 QLast Update : Tue Aug 19 06:08:32 2025
 Response via : Initial Calibration
 Integrator: ChemStation

Volume Inj. : 2 µl
 Signal #1 Phase : ZB-MR1 Signal #2 Phase: ZB-MR2
 Signal #1 Info : 30Mx0.32mmx 0.50µ Signal #2 Info : 30M x 0.32mm x 0.25µm

Compound	RT#1	RT#2	Resp#1	Resp#2	ng/ml	ng/ml

System Monitoring Compounds						
1) SA Tetrachlo...	3.664	3.656	162.9E6	94810673	19.902	18.735
2) SA Decachlor...	8.686	8.632	216.8E6	59426132	31.284m	31.362m

Target Compounds

(f)=RT Delta > 1/2 Window (#)=Amounts differ by > 25% (m)=manual int.

Data Path : Z:\pestpcbsrv\HPCHEM1\ECD_0\Data\P0082125\
Data File : P0113134.D
Signal(s) : Signal #1: ECD1A.ch Signal #2: ECD2B.ch
Acq On : 21 Aug 2025 15:20
Operator : YP/AJ
Sample : Q2914-13MS
Misc :
ALS Vial : 17 Sample Multiplier: 1

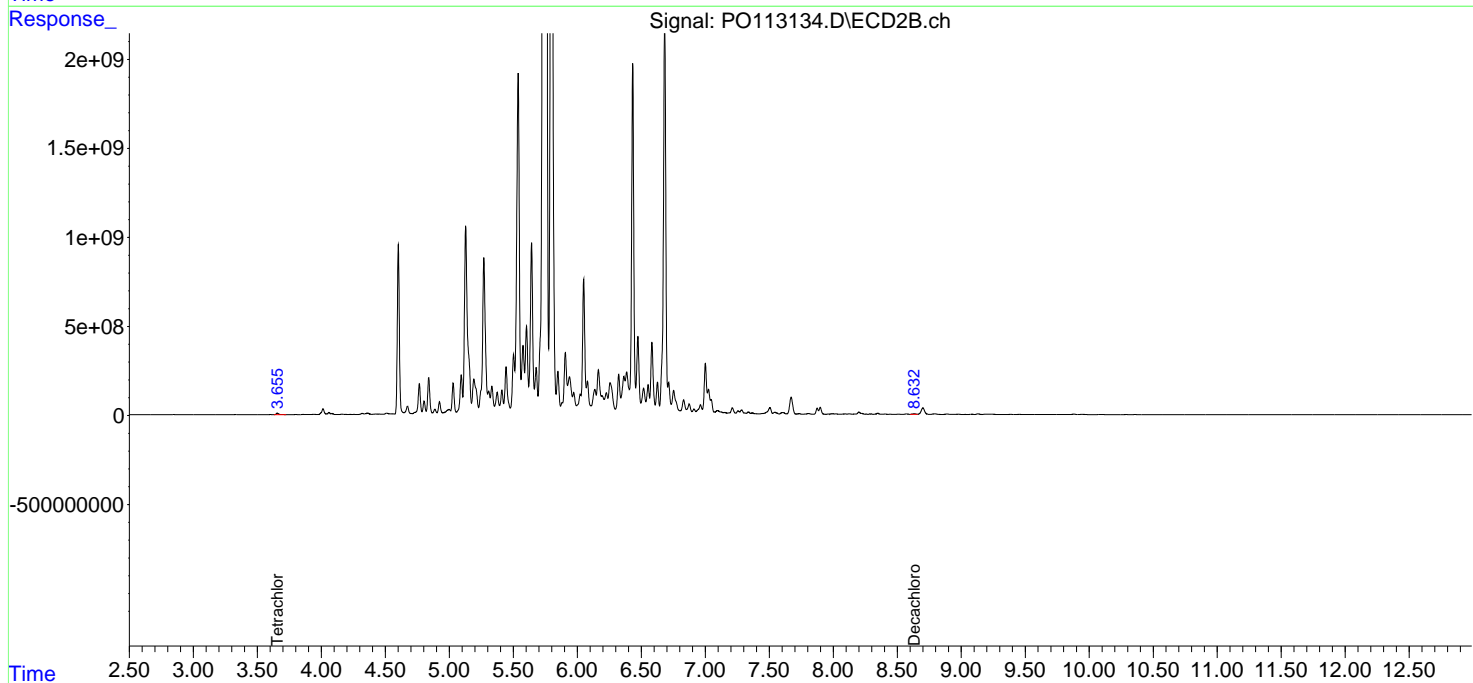
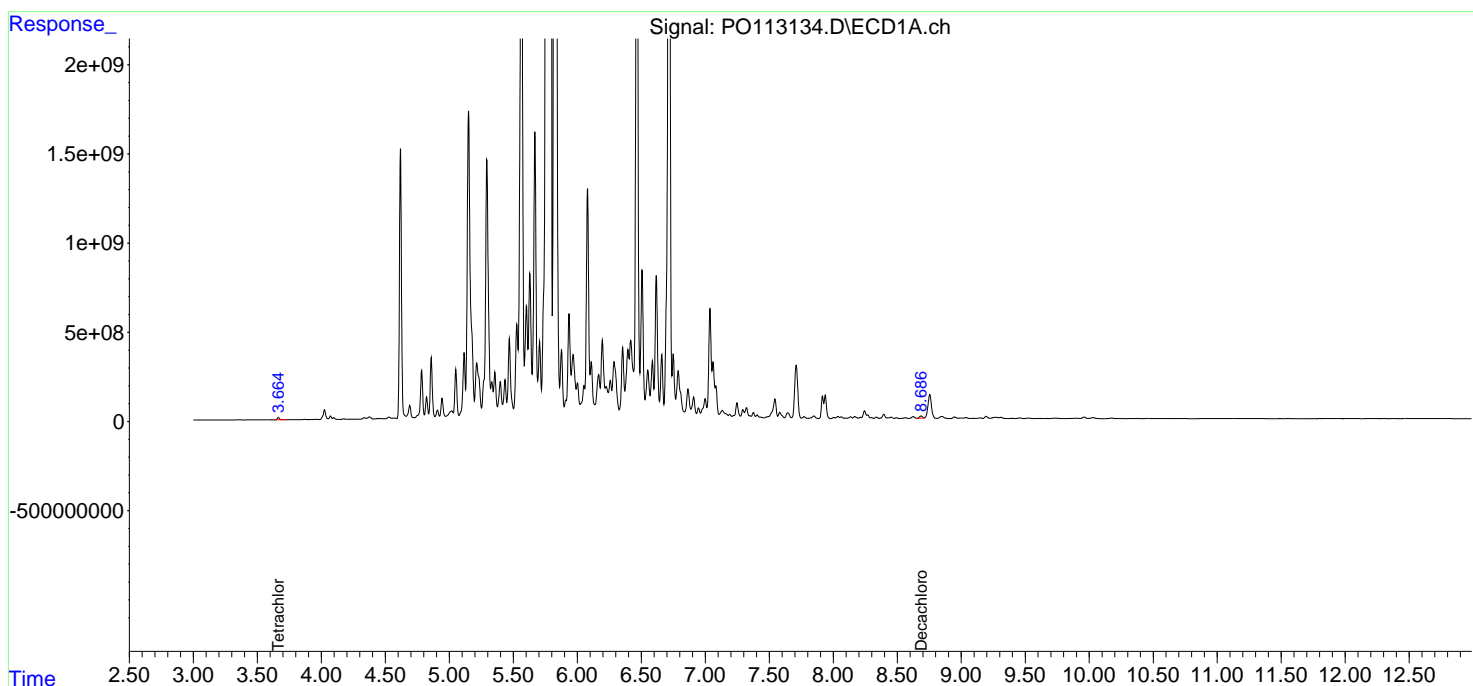
Instrument :
ECD_0
ClientSampleId :
K262-13AMS

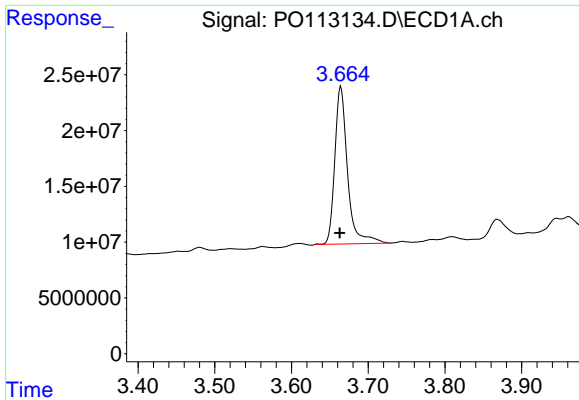
Manual Integrations
APPROVED

Reviewed By :Yogesh Patel 08/22/2025
Supervised By :mohammad ahmed 08/25/2025

Integration File signal 1: autoint1.e
Integration File signal 2: autoint2.e
Quant Time: Aug 22 00:26:27 2025
Quant Method : Z:\pestpcbsrv\HPCHEM1\ECD_0\methods\P0081825.M
Quant Title : GC EXTRACTABLES
QLast Update : Tue Aug 19 06:08:32 2025
Response via : Initial Calibration
Integrator: ChemStation

Volume Inj. : 2 µl
Signal #1 Phase : ZB-MR1 Signal #2 Phase: ZB-MR2
Signal #1 Info : 30Mx0.32mmx 0.50µ Signal #2 Info : 30M x 0.32mm x 0.25µm



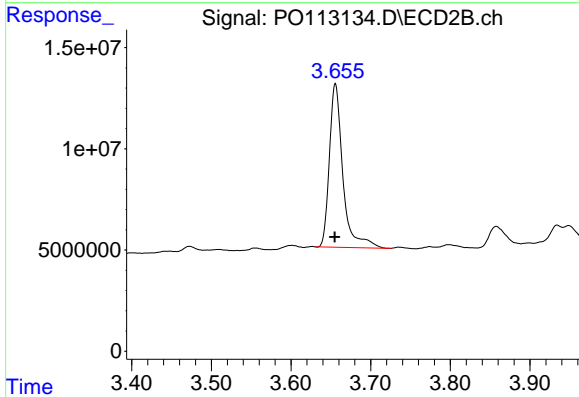


#1 Tetrachloro-m-xylene
 R.T.: 3.664 min
 Delta R.T.: 0.001 min
 Response: 162928442
 Conc: 19.90 ng/ml

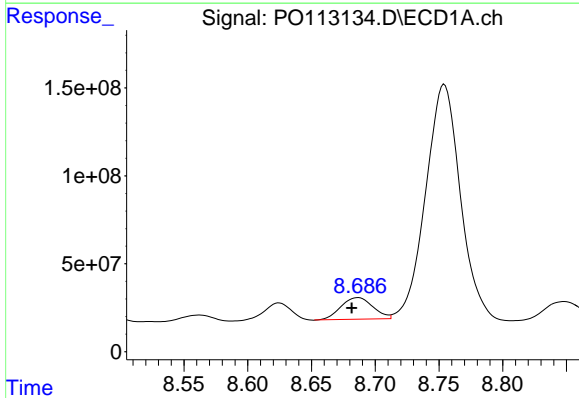
Instrument :
 ECD_O
 ClientSampleId :
 K262-13AMS

Manual Integrations
 APPROVED

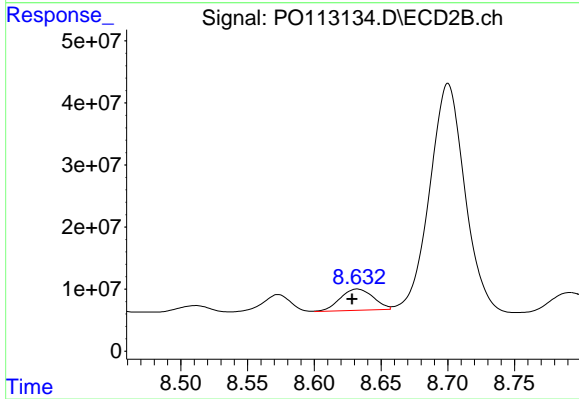
Reviewed By :Yogesh Patel 08/22/2025
 Supervised By :mohammad ahmed 08/25/2025



#1 Tetrachloro-m-xylene
 R.T.: 3.656 min
 Delta R.T.: 0.000 min
 Response: 94810673
 Conc: 18.73 ng/ml



#2 Decachlorobiphenyl
 R.T.: 8.686 min
 Delta R.T.: 0.005 min
 Response: 216841918
 Conc: 31.28 ng/ml m



#2 Decachlorobiphenyl
 R.T.: 8.632 min
 Delta R.T.: 0.003 min
 Response: 59426132
 Conc: 31.36 ng/ml m