

Data Path : Z:\pestpcbsrv\HPCHEM1\ECD\_0\Data\P0082125\  
 Data File : P0113136.D  
 Signal(s) : Signal #1: ECD1A.ch Signal #2: ECD2B.ch  
 Acq On : 21 Aug 2025 17:09  
 Operator : YP/AJ  
 Sample : AR1660CCC500  
 Misc :  
 ALS Vial : 3 Sample Multiplier: 1

Instrument :  
 ECD\_0  
 ClientSampleId :  
 AR1660CCC500

Integration File signal 1: autoint1.e  
 Integration File signal 2: autoint2.e  
 Quant Time: Aug 22 00:27:16 2025  
 Quant Method : Z:\pestpcbsrv\HPCHEM1\ECD\_0\methods\P0081825.M  
 Quant Title : GC EXTRACTABLES  
 QLast Update : Tue Aug 19 06:08:32 2025  
 Response via : Initial Calibration  
 Integrator: ChemStation

Volume Inj. : 2 µl  
 Signal #1 Phase : ZB-MR1 Signal #2 Phase: ZB-MR2  
 Signal #1 Info : 30Mx0.32mmx 0.50µ Signal #2 Info : 30M x 0.32mm x 0.25µm

Compound	RT#1	RT#2	Resp#1	Resp#2	ng/ml	ng/ml
-----						
System Monitoring Compounds						
1) SA Tetrachlo...	3.664	3.655	435.8E6	259.7E6	53.238	51.317
2) SA Decachlor...	8.682	8.628	331.7E6	93390778	47.847	49.287
Target Compounds						
3) L1 AR-1016-1	4.748	4.729	142.3E6	86312904	532.940	506.015
4) L1 AR-1016-2	4.767	4.747	216.9E6	130.4E6	540.334	506.130
5) L1 AR-1016-3	4.823	4.922	137.1E6	68656622	537.485	491.759
6) L1 AR-1016-4	4.943	4.964	108.5E6	55574330	497.462	476.220
7) L1 AR-1016-5	5.199	5.176	119.3E6	73160402	538.191	513.298
31) L7 AR-1260-1	6.236	6.204	223.5E6	119.6E6	501.249	468.967
32) L7 AR-1260-2	6.426	6.392	344.9E6	161.2E6	502.223	466.240
33) L7 AR-1260-3	6.791	6.543	303.9E6	130.6E6	492.214	438.996
34) L7 AR-1260-4	7.051	7.012	217.4E6	92541140	485.428	446.520
35) L7 AR-1260-5	7.294	7.255	593.1E6	208.2E6	489.854	444.398
-----						

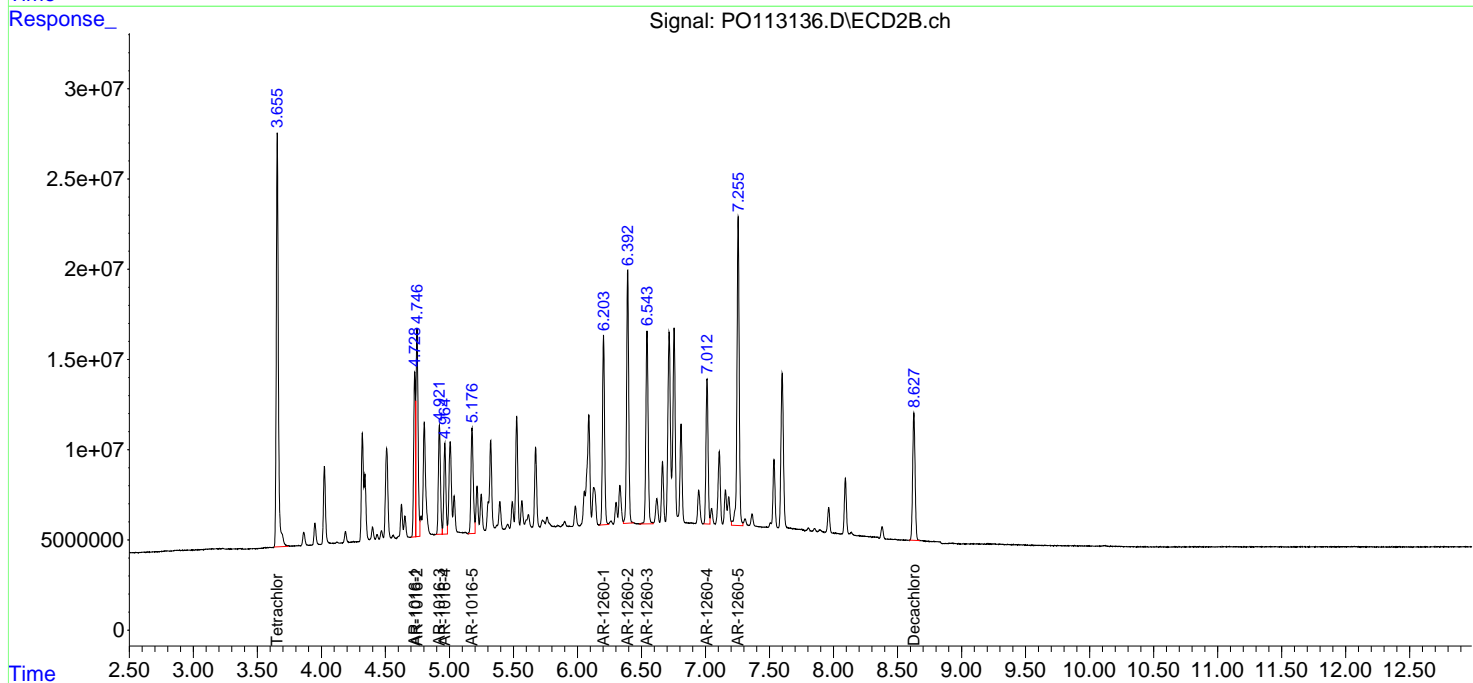
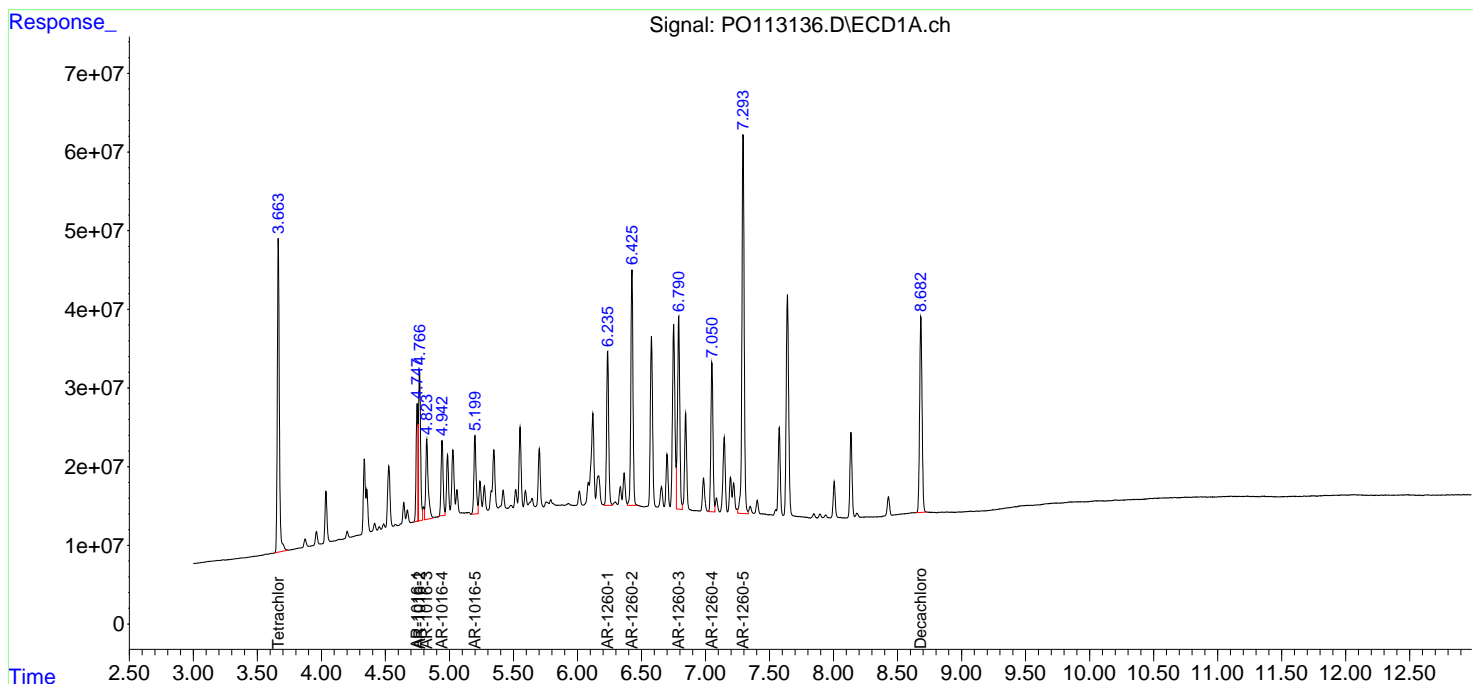
(f)=RT Delta > 1/2 Window (#)=Amounts differ by > 25% (m)=manual int.

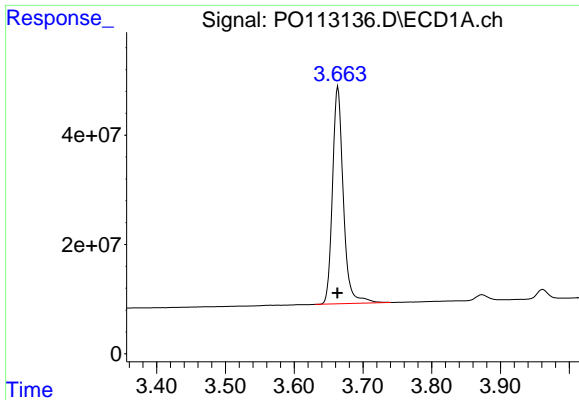
Data Path : Z:\pestpcbsrv\HPCHEM1\ECD\_O\Data\PO082125\  
 Data File : PO113136.D  
 Signal(s) : Signal #1: ECD1A.ch Signal #2: ECD2B.ch  
 Acq On : 21 Aug 2025 17:09  
 Operator : YP/AJ  
 Sample : AR1660CCC500  
 Misc :  
 ALS Vial : 3 Sample Multiplier: 1

Instrument :  
 ECD\_O  
 ClientSampleId :  
 AR1660CCC500

Integration File signal 1: autoint1.e  
 Integration File signal 2: autoint2.e  
 Quant Time: Aug 22 00:27:16 2025  
 Quant Method : Z:\pestpcbsrv\HPCHEM1\ECD\_O\methods\PO081825.M  
 Quant Title : GC EXTRACTABLES  
 QLast Update : Tue Aug 19 06:08:32 2025  
 Response via : Initial Calibration  
 Integrator: ChemStation

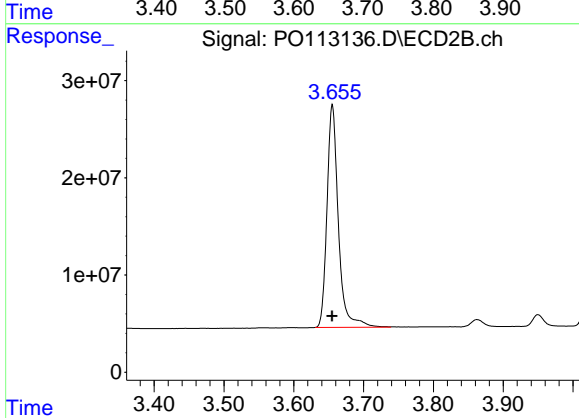
Volume Inj. : 2 µl  
 Signal #1 Phase : ZB-MR1 Signal #2 Phase: ZB-MR2  
 Signal #1 Info : 30Mx0.32mmx 0.50µ Signal #2 Info : 30M x 0.32mm x 0.25µm



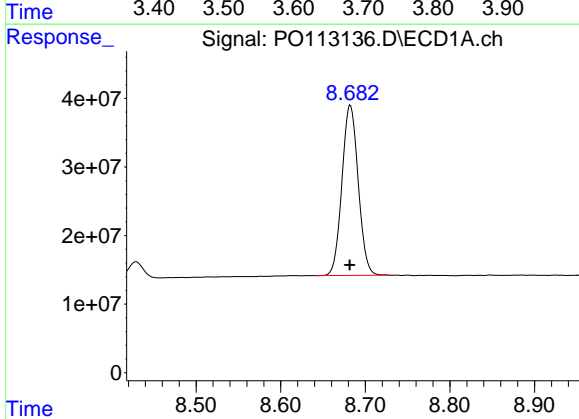


#1 Tetrachloro-m-xylene  
 R.T.: 3.664 min  
 Delta R.T.: 0.000 min  
 Response: 435835221  
 Conc: 53.24 ng/ml

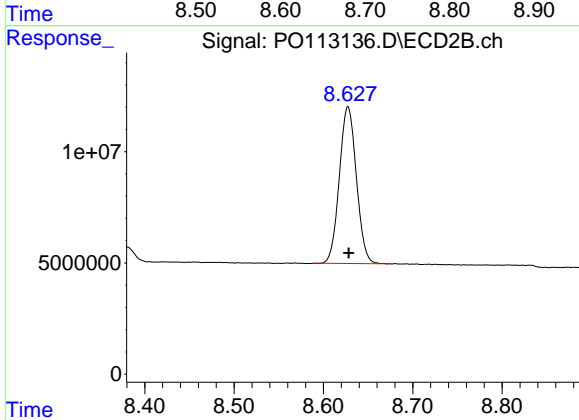
Instrument :  
 ECD\_O  
 ClientSampleId :  
 AR1660CCC500



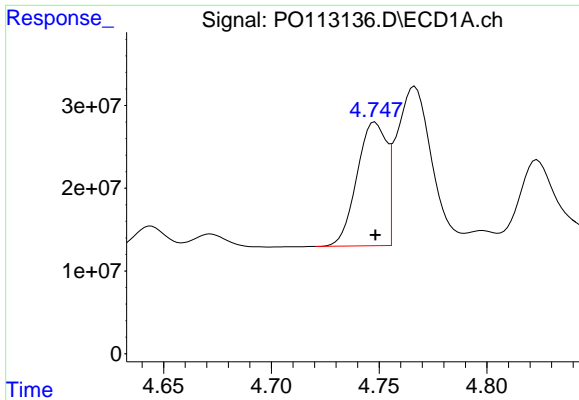
#1 Tetrachloro-m-xylene  
 R.T.: 3.655 min  
 Delta R.T.: 0.000 min  
 Response: 259699925  
 Conc: 51.32 ng/ml



#2 Decachlorobiphenyl  
 R.T.: 8.682 min  
 Delta R.T.: 0.000 min  
 Response: 331650351  
 Conc: 47.85 ng/ml



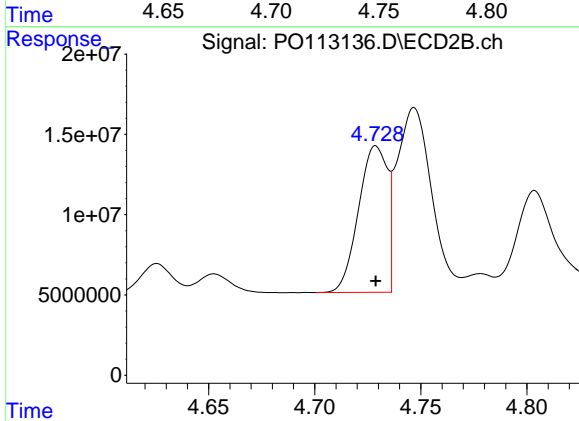
#2 Decachlorobiphenyl  
 R.T.: 8.628 min  
 Delta R.T.: 0.000 min  
 Response: 93390778  
 Conc: 49.29 ng/ml



#3 AR-1016-1

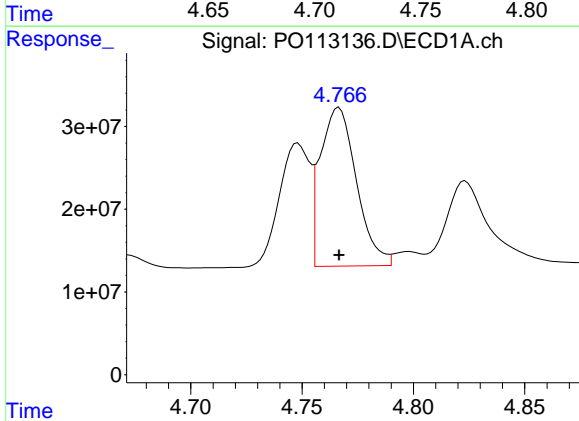
R.T.: 4.748 min  
 Delta R.T.: 0.000 min  
 Response: 142286800  
 Conc: 532.94 ng/ml

Instrument :  
 ECD\_O  
 ClientSampleId :  
 AR1660CCC500



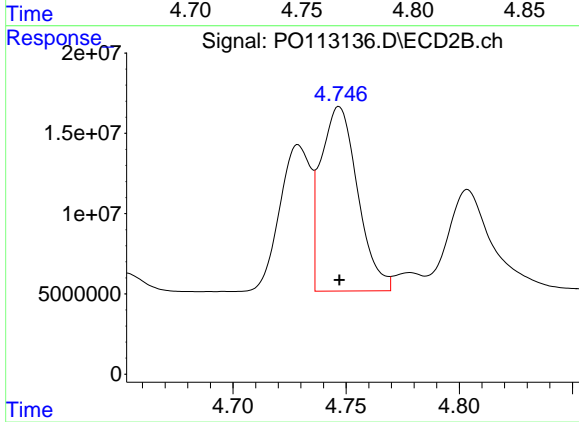
#3 AR-1016-1

R.T.: 4.729 min  
 Delta R.T.: 0.000 min  
 Response: 86312904  
 Conc: 506.02 ng/ml



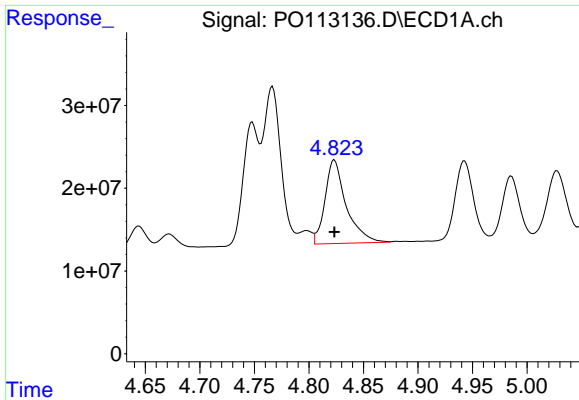
#4 AR-1016-2

R.T.: 4.767 min  
 Delta R.T.: 0.000 min  
 Response: 216907071  
 Conc: 540.33 ng/ml



#4 AR-1016-2

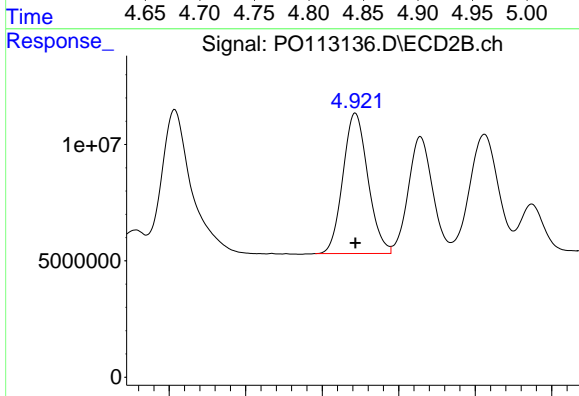
R.T.: 4.747 min  
 Delta R.T.: 0.000 min  
 Response: 130407490  
 Conc: 506.13 ng/ml



#5 AR-1016-3

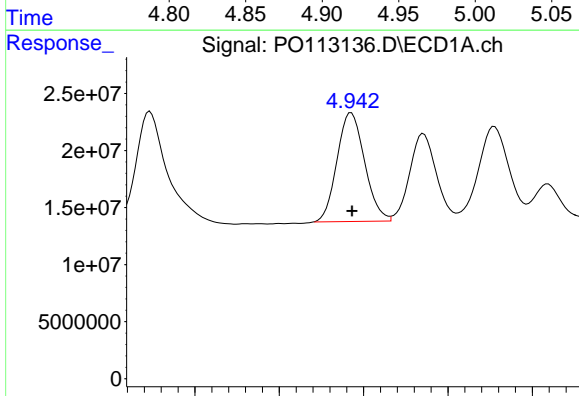
R.T.: 4.823 min  
 Delta R.T.: 0.000 min  
 Response: 137070776  
 Conc: 537.49 ng/ml

Instrument :  
 ECD\_O  
 ClientSampleId :  
 AR1660CCC500



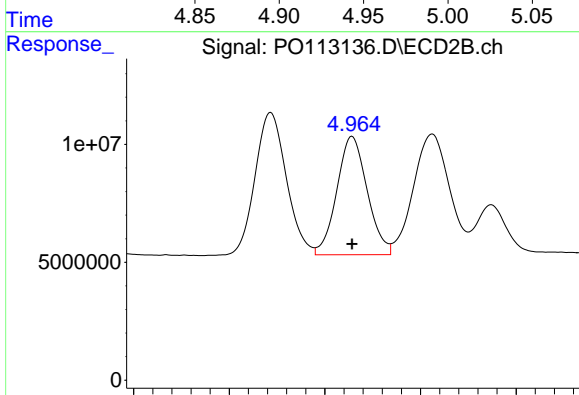
#5 AR-1016-3

R.T.: 4.922 min  
 Delta R.T.: 0.000 min  
 Response: 68656622  
 Conc: 491.76 ng/ml



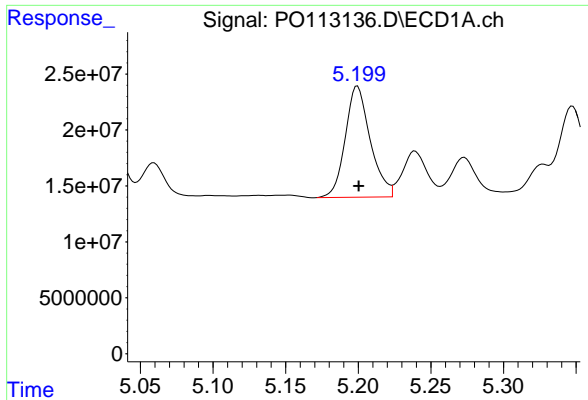
#6 AR-1016-4

R.T.: 4.943 min  
 Delta R.T.: 0.000 min  
 Response: 108480668  
 Conc: 497.46 ng/ml



#6 AR-1016-4

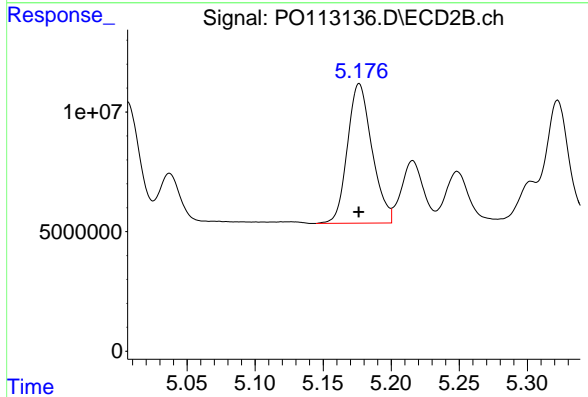
R.T.: 4.964 min  
 Delta R.T.: 0.000 min  
 Response: 55574330  
 Conc: 476.22 ng/ml



#7 AR-1016-5

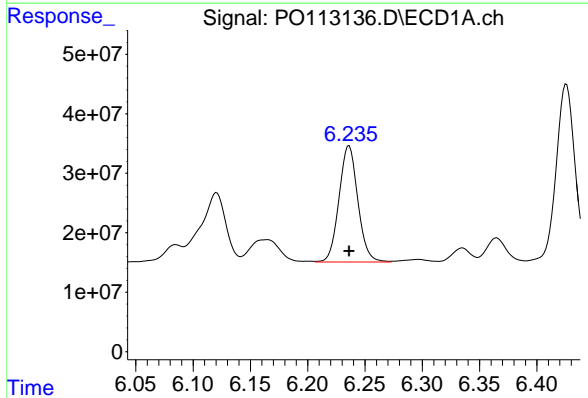
R.T.: 5.199 min  
 Delta R.T.: 0.000 min  
 Response: 119278239  
 Conc: 538.19 ng/ml

Instrument :  
 ECD\_O  
 ClientSampleId :  
 AR1660CCC500



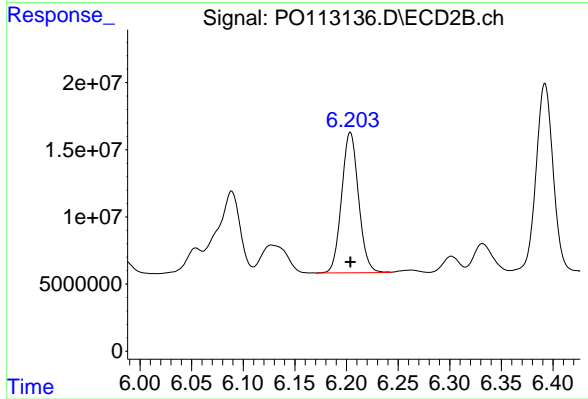
#7 AR-1016-5

R.T.: 5.176 min  
 Delta R.T.: 0.000 min  
 Response: 73160402  
 Conc: 513.30 ng/ml



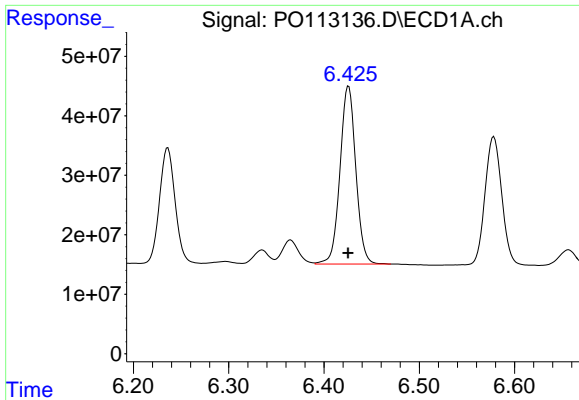
#31 AR-1260-1

R.T.: 6.236 min  
 Delta R.T.: 0.000 min  
 Response: 223547405  
 Conc: 501.25 ng/ml



#31 AR-1260-1

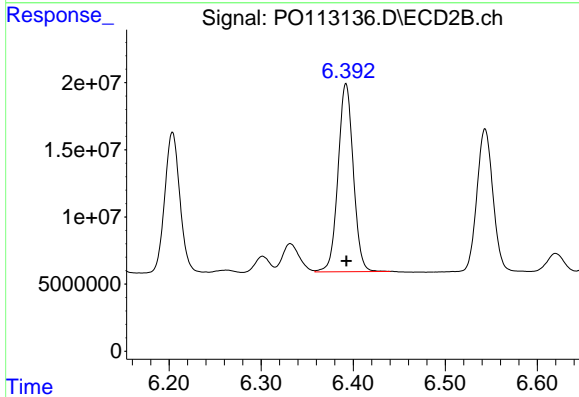
R.T.: 6.204 min  
 Delta R.T.: 0.000 min  
 Response: 119618951  
 Conc: 468.97 ng/ml



#32 AR-1260-2

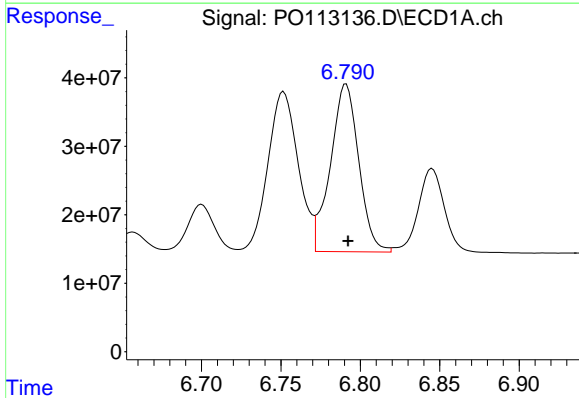
R.T.: 6.426 min  
 Delta R.T.: 0.000 min  
 Response: 344887039  
 Conc: 502.22 ng/ml

Instrument :  
 ECD\_O  
 ClientSampleId :  
 AR1660CCC500



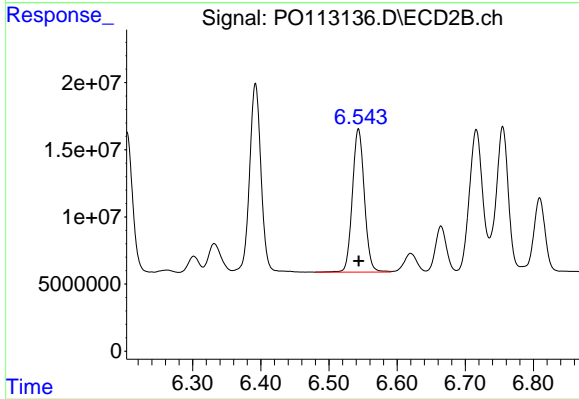
#32 AR-1260-2

R.T.: 6.392 min  
 Delta R.T.: 0.000 min  
 Response: 161184830  
 Conc: 466.24 ng/ml



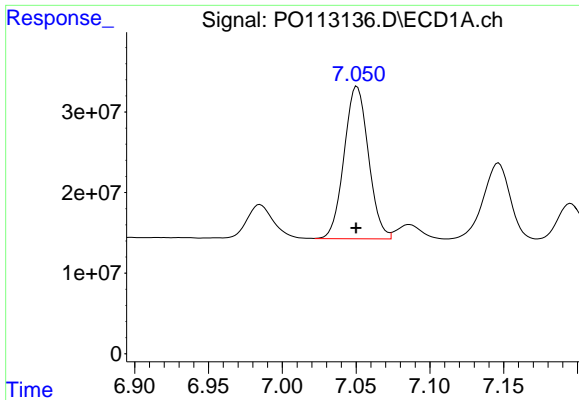
#33 AR-1260-3

R.T.: 6.791 min  
 Delta R.T.: -0.001 min  
 Response: 303929008  
 Conc: 492.21 ng/ml



#33 AR-1260-3

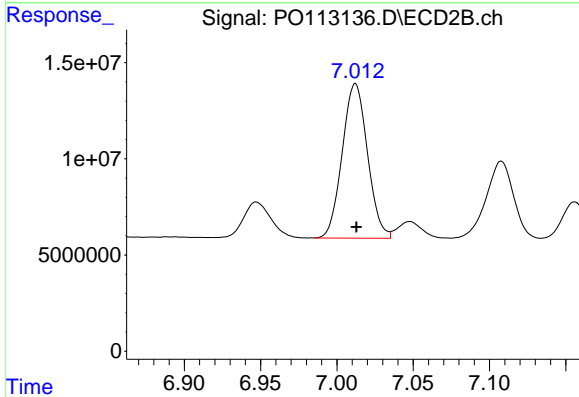
R.T.: 6.543 min  
 Delta R.T.: 0.000 min  
 Response: 130572333  
 Conc: 439.00 ng/ml



#34 AR-1260-4

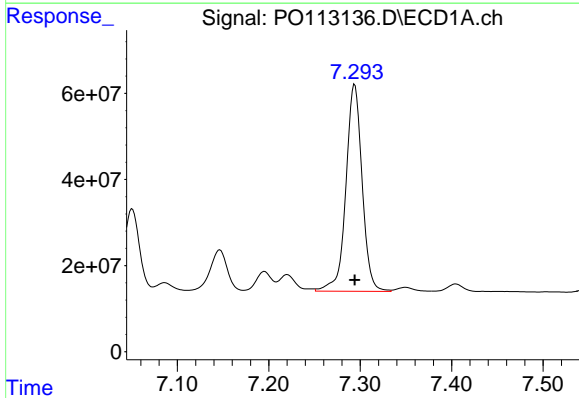
R.T.: 7.051 min  
 Delta R.T.: 0.000 min  
 Response: 217410758  
 Conc: 485.43 ng/ml

Instrument :  
 ECD\_O  
 ClientSampleId :  
 AR1660CCC500



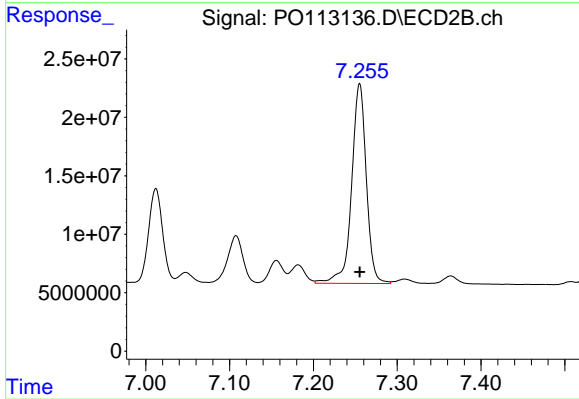
#34 AR-1260-4

R.T.: 7.012 min  
 Delta R.T.: 0.000 min  
 Response: 92541140  
 Conc: 446.52 ng/ml



#35 AR-1260-5

R.T.: 7.294 min  
 Delta R.T.: 0.000 min  
 Response: 593058758  
 Conc: 489.85 ng/ml



#35 AR-1260-5

R.T.: 7.255 min  
 Delta R.T.: 0.000 min  
 Response: 208168921  
 Conc: 444.40 ng/ml