

Data Path : Z:\pestpcbsrv\HPCHEM1\ECD_0\Data\P0082125\
 Data File : PO113137.D
 Signal(s) : Signal #1: ECD1A.ch Signal #2: ECD2B.ch
 Acq On : 21 Aug 2025 17:45
 Operator : YP/AJ
 Sample : AR1242CCC500
 Misc :
 ALS Vial : 4 Sample Multiplier: 1

Instrument :
 ECD_0
 ClientSampleId :
 AR1242CCC500

Integration File signal 1: autoint1.e
 Integration File signal 2: autoint2.e
 Quant Time: Aug 22 00:27:34 2025
 Quant Method : Z:\pestpcbsrv\HPCHEM1\ECD_0\methods\P0081825.M
 Quant Title : GC EXTRACTABLES
 QLast Update : Tue Aug 19 06:08:32 2025
 Response via : Initial Calibration
 Integrator: ChemStation

Volume Inj. : 2 µl
 Signal #1 Phase : ZB-MR1 Signal #2 Phase: ZB-MR2
 Signal #1 Info : 30Mx0.32mmx 0.50µ Signal #2 Info : 30M x 0.32mm x 0.25µm

Compound	RT#1	RT#2	Resp#1	Resp#2	ng/ml	ng/ml

System Monitoring Compounds						
1) SA Tetrachlo...	3.664	3.655	450.3E6	268.5E6	55.002	53.048
2) SA Decachlor...	8.683	8.629	346.9E6	96500338	50.051	50.928
Target Compounds						
16) L4 AR-1242-1	4.748	4.729	127.6E6	76187893	554.886	527.236
17) L4 AR-1242-2	4.767	4.747	189.8E6	115.7E6	552.366	533.289
18) L4 AR-1242-3	4.824	4.922	121.5E6	60321724	547.602	515.728
19) L4 AR-1242-4	4.943	5.006	96380721	59251852	555.628	503.682
20) L4 AR-1242-5	5.594	5.525	111.0E6	78048439	554.552	523.348

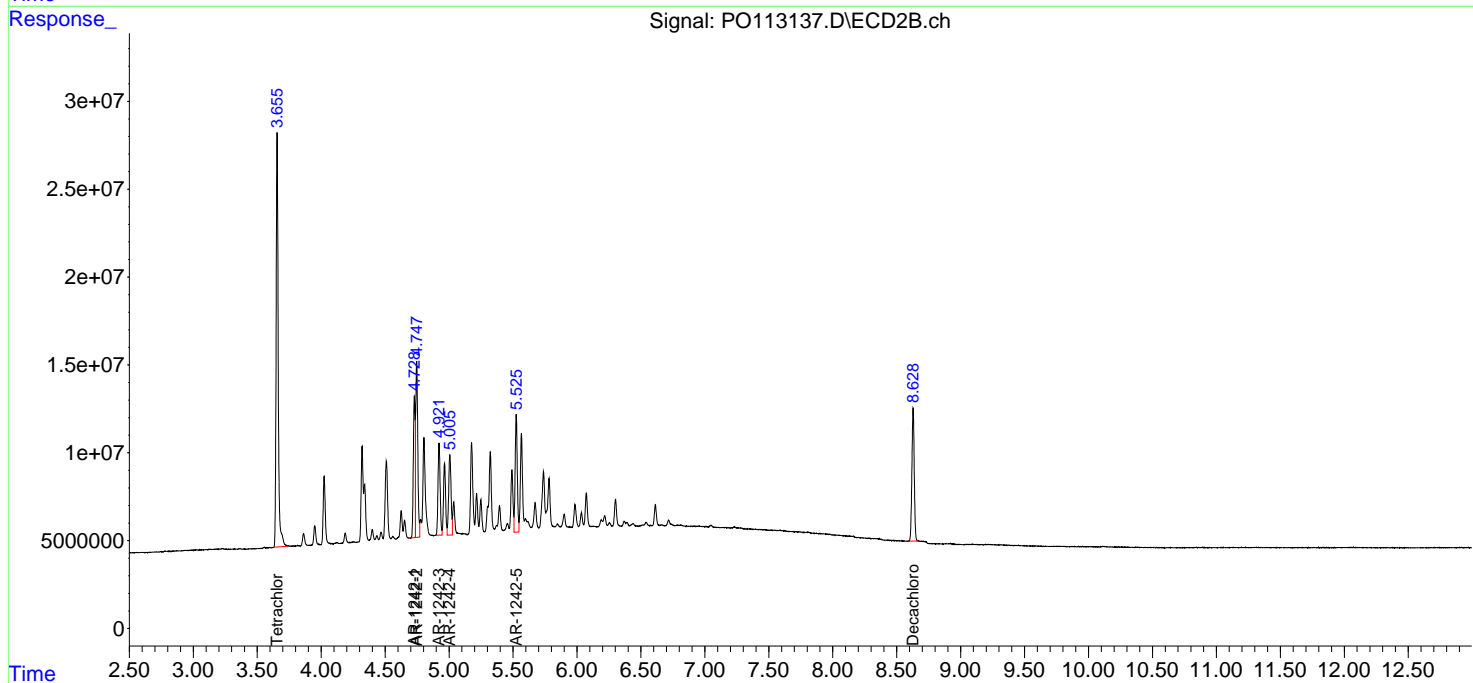
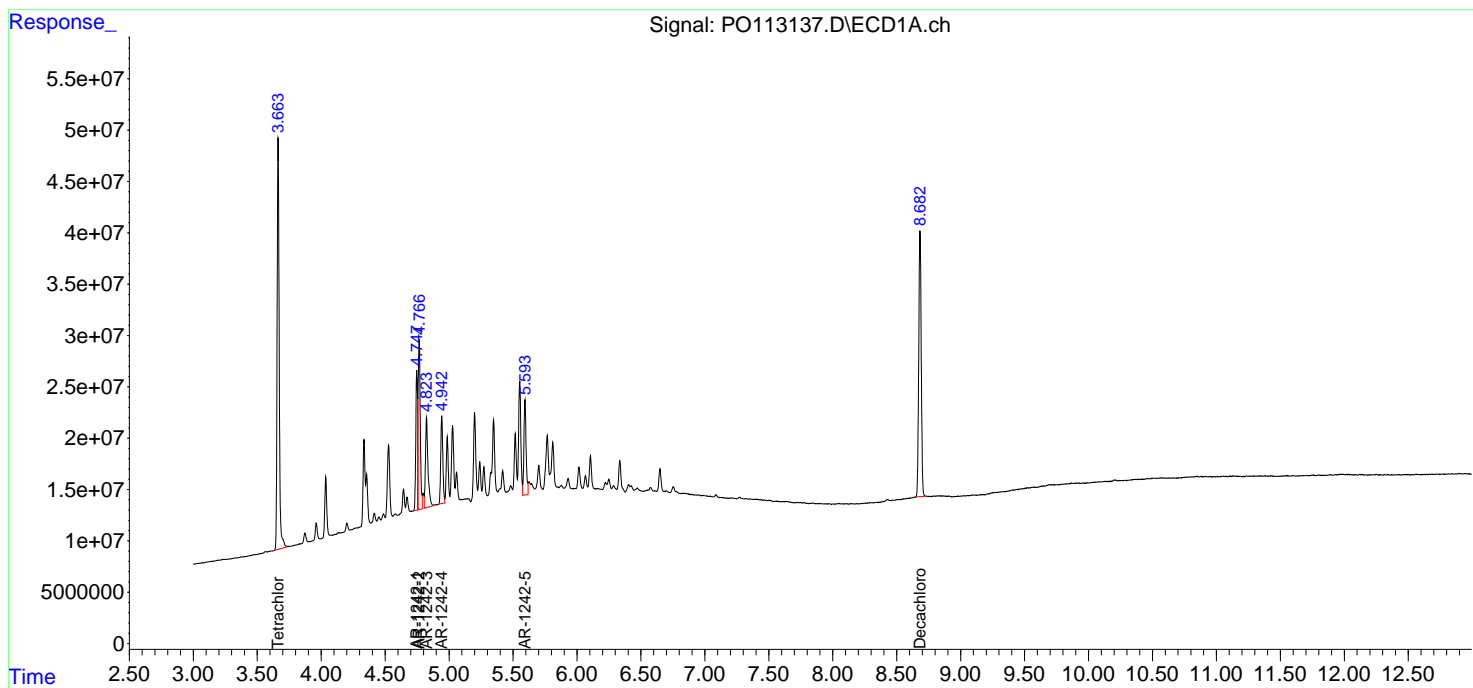
(f)=RT Delta > 1/2 Window (#)=Amounts differ by > 25% (m)=manual int.

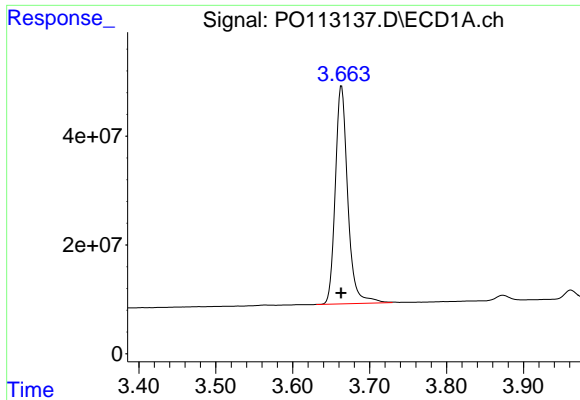
Data Path : Z:\pestpcbsrv\HPCHEM1\ECD_O\Data\P0082125\
 Data File : P0113137.D
 Signal(s) : Signal #1: ECD1A.ch Signal #2: ECD2B.ch
 Acq On : 21 Aug 2025 17:45
 Operator : YP/AJ
 Sample : AR1242CCC500
 Misc :
 ALS Vial : 4 Sample Multiplier: 1

Instrument :
 ECD_O
 ClientSampleId :
 AR1242CCC500

Integration File signal 1: autoint1.e
 Integration File signal 2: autoint2.e
 Quant Time: Aug 22 00:27:34 2025
 Quant Method : Z:\pestpcbsrv\HPCHEM1\ECD_O\methods\P0081825.M
 Quant Title : GC EXTRACTABLES
 QLast Update : Tue Aug 19 06:08:32 2025
 Response via : Initial Calibration
 Integrator: ChemStation

Volume Inj. : 2 µl
 Signal #1 Phase : ZB-MR1 Signal #2 Phase: ZB-MR2
 Signal #1 Info : 30Mx0.32mmx 0.50µ Signal #2 Info : 30M x 0.32mm x 0.25µm

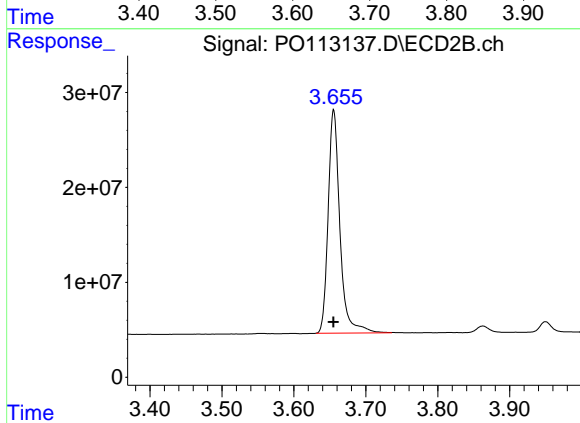




#1 Tetrachloro-m-xylene

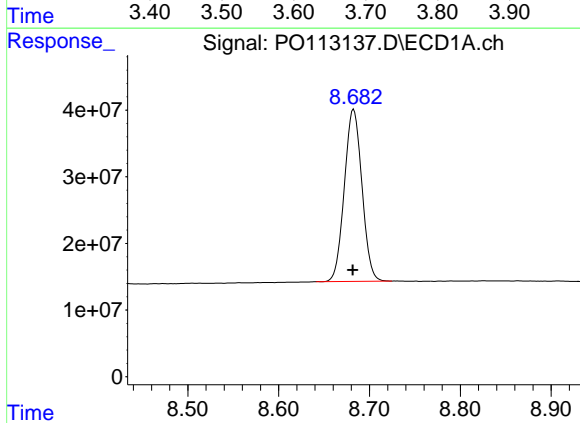
R.T.: 3.664 min
 Delta R.T.: 0.000 min
 Response: 450279397
 Conc: 55.00 ng/ml

Instrument :
 ECD_O
 ClientSampleId :
 AR1242CCC500



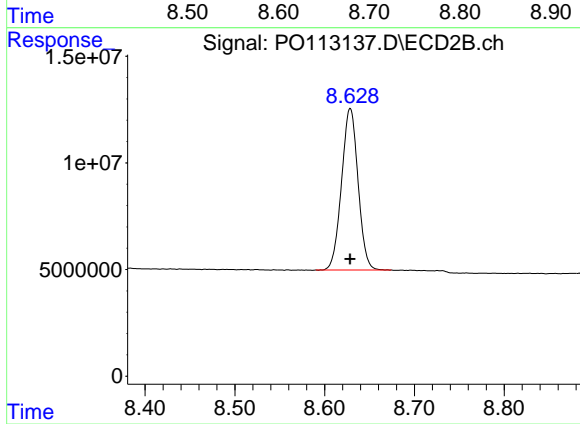
#1 Tetrachloro-m-xylene

R.T.: 3.655 min
 Delta R.T.: 0.000 min
 Response: 268459927
 Conc: 53.05 ng/ml



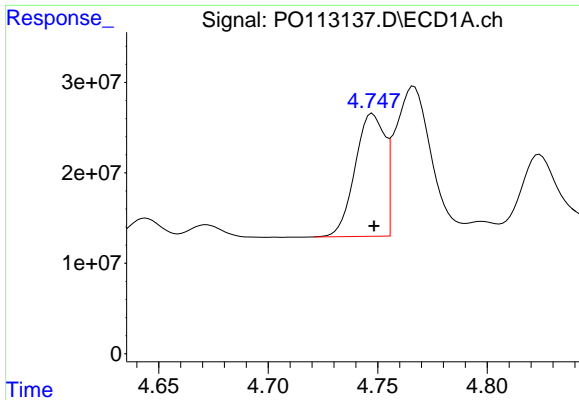
#2 Decachlorobiphenyl

R.T.: 8.683 min
 Delta R.T.: 0.001 min
 Response: 346926276
 Conc: 50.05 ng/ml



#2 Decachlorobiphenyl

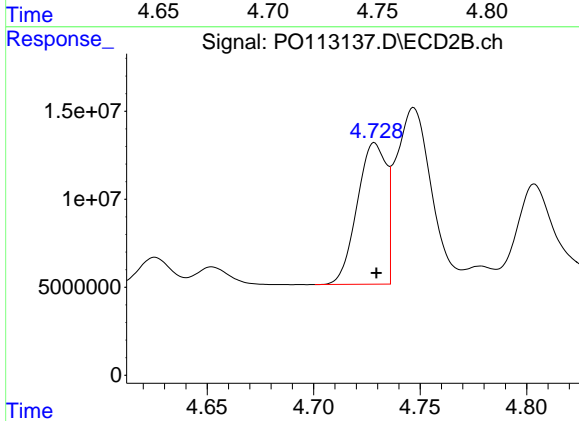
R.T.: 8.629 min
 Delta R.T.: 0.000 min
 Response: 96500338
 Conc: 50.93 ng/ml



#16 AR-1242-1

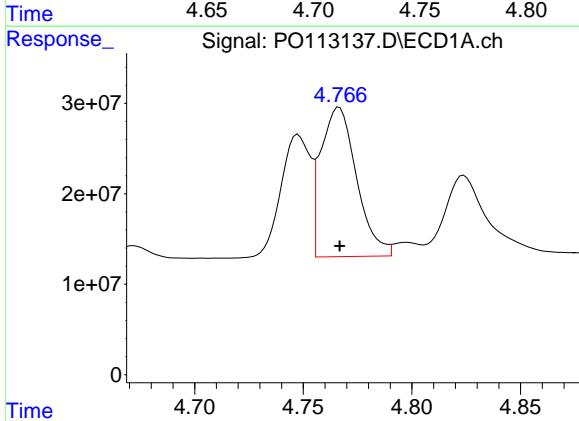
R.T.: 4.748 min
 Delta R.T.: 0.000 min
 Response: 127585896
 Conc: 554.89 ng/ml

Instrument :
 ECD_O
 ClientSampleId :
 AR1242CCC500



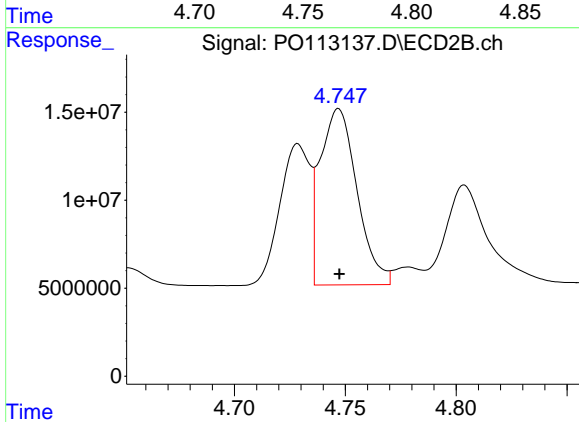
#16 AR-1242-1

R.T.: 4.729 min
 Delta R.T.: 0.000 min
 Response: 76187893
 Conc: 527.24 ng/ml



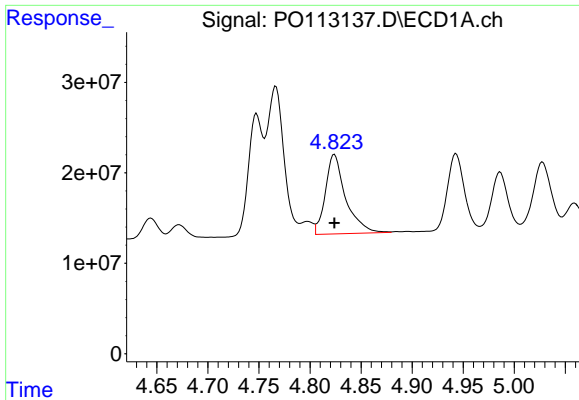
#17 AR-1242-2

R.T.: 4.767 min
 Delta R.T.: 0.000 min
 Response: 189806731
 Conc: 552.37 ng/ml



#17 AR-1242-2

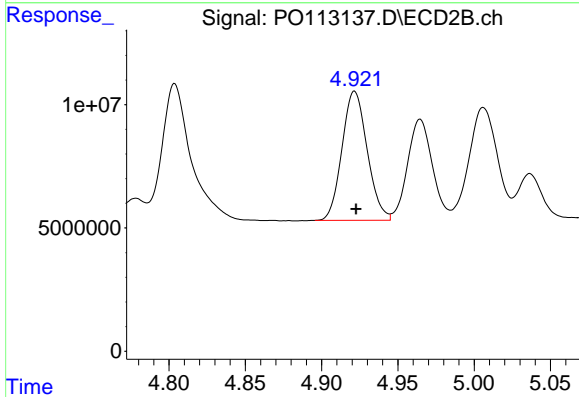
R.T.: 4.747 min
 Delta R.T.: 0.000 min
 Response: 115676336
 Conc: 533.29 ng/ml



#18 AR-1242-3

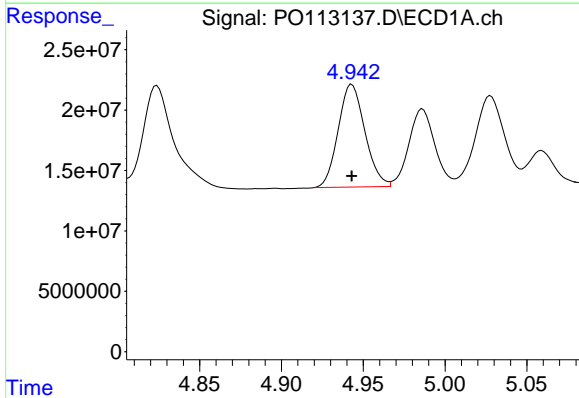
R.T.: 4.824 min
 Delta R.T.: 0.000 min
 Response: 121504311
 Conc: 547.60 ng/ml

Instrument :
 ECD_O
 ClientSampleId :
 AR1242CCC500



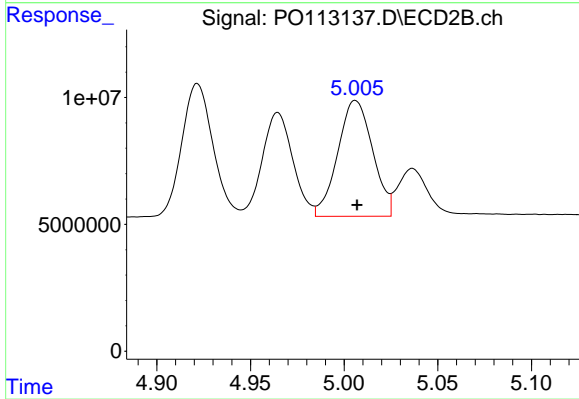
#18 AR-1242-3

R.T.: 4.922 min
 Delta R.T.: 0.000 min
 Response: 60321724
 Conc: 515.73 ng/ml



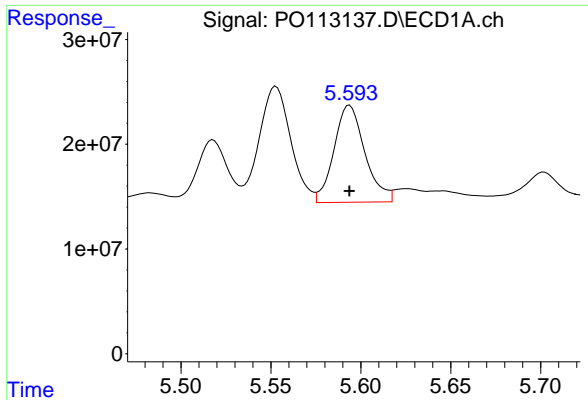
#19 AR-1242-4

R.T.: 4.943 min
 Delta R.T.: 0.000 min
 Response: 96380721
 Conc: 555.63 ng/ml



#19 AR-1242-4

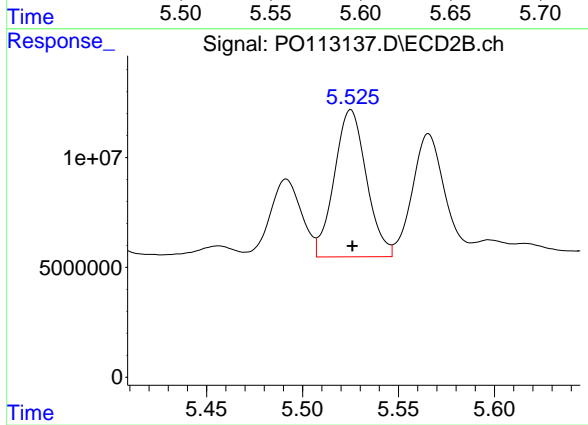
R.T.: 5.006 min
 Delta R.T.: 0.000 min
 Response: 59251852
 Conc: 503.68 ng/ml



#20 AR-1242-5

R.T.: 5.594 min
Delta R.T.: 0.000 min
Response: 11100452
Conc: 554.55 ng/ml

Instrument :
ECD_O
ClientSampleId :
AR1242CCC500



#20 AR-1242-5

R.T.: 5.525 min
Delta R.T.: 0.000 min
Response: 78048439
Conc: 523.35 ng/ml