

Data Path : Z:\pestpcbsrv\HPCHEM1\ECD\_0\Data\P0082125\  
 Data File : P0113138.D  
 Signal(s) : Signal #1: ECD1A.ch Signal #2: ECD2B.ch  
 Acq On : 21 Aug 2025 18:04  
 Operator : YP/AJ  
 Sample : AR1248CCC500  
 Misc :  
 ALS Vial : 5 Sample Multiplier: 1

Instrument :  
 ECD\_0  
 ClientSampleId :  
 AR1248CCC500

Integration File signal 1: autoint1.e  
 Integration File signal 2: autoint2.e  
 Quant Time: Aug 22 00:27:53 2025  
 Quant Method : Z:\pestpcbsrv\HPCHEM1\ECD\_0\methods\P0081825.M  
 Quant Title : GC EXTRACTABLES  
 QLast Update : Tue Aug 19 06:08:32 2025  
 Response via : Initial Calibration  
 Integrator: ChemStation

Volume Inj. : 2 µl  
 Signal #1 Phase : ZB-MR1 Signal #2 Phase: ZB-MR2  
 Signal #1 Info : 30Mx0.32mmx 0.50µ Signal #2 Info : 30M x 0.32mm x 0.25µm

Compound	RT#1	RT#2	Resp#1	Resp#2	ng/ml	ng/ml
-----						
System Monitoring Compounds						
1) SA Tetrachlo...	3.662	3.654	443.0E6	263.3E6	54.107	52.027
2) SA Decachlor...	8.682	8.627	349.7E6	96745528	50.445	51.057
Target Compounds						
21) L5 AR-1248-1	4.747	4.728	93288040	58441125	534.705	524.080
22) L5 AR-1248-2	4.985	4.964	126.5E6	81763287	523.072	508.798
23) L5 AR-1248-3	5.199	5.005	173.8E6	86898359	545.188	512.189
24) L5 AR-1248-4	5.552	5.176	260.1E6	104.4E6	520.543	523.974
25) L5 AR-1248-5	5.593	5.565	175.3E6	104.4E6	513.196	491.555
-----						

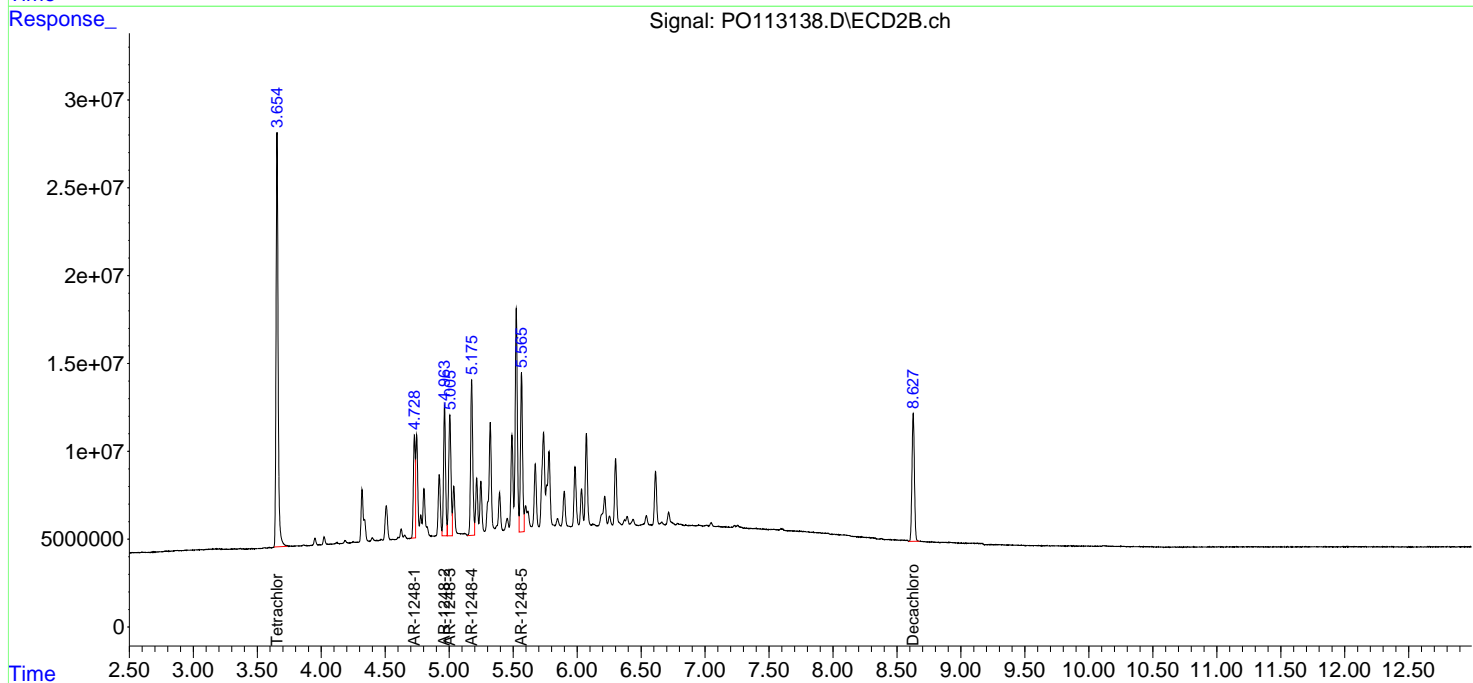
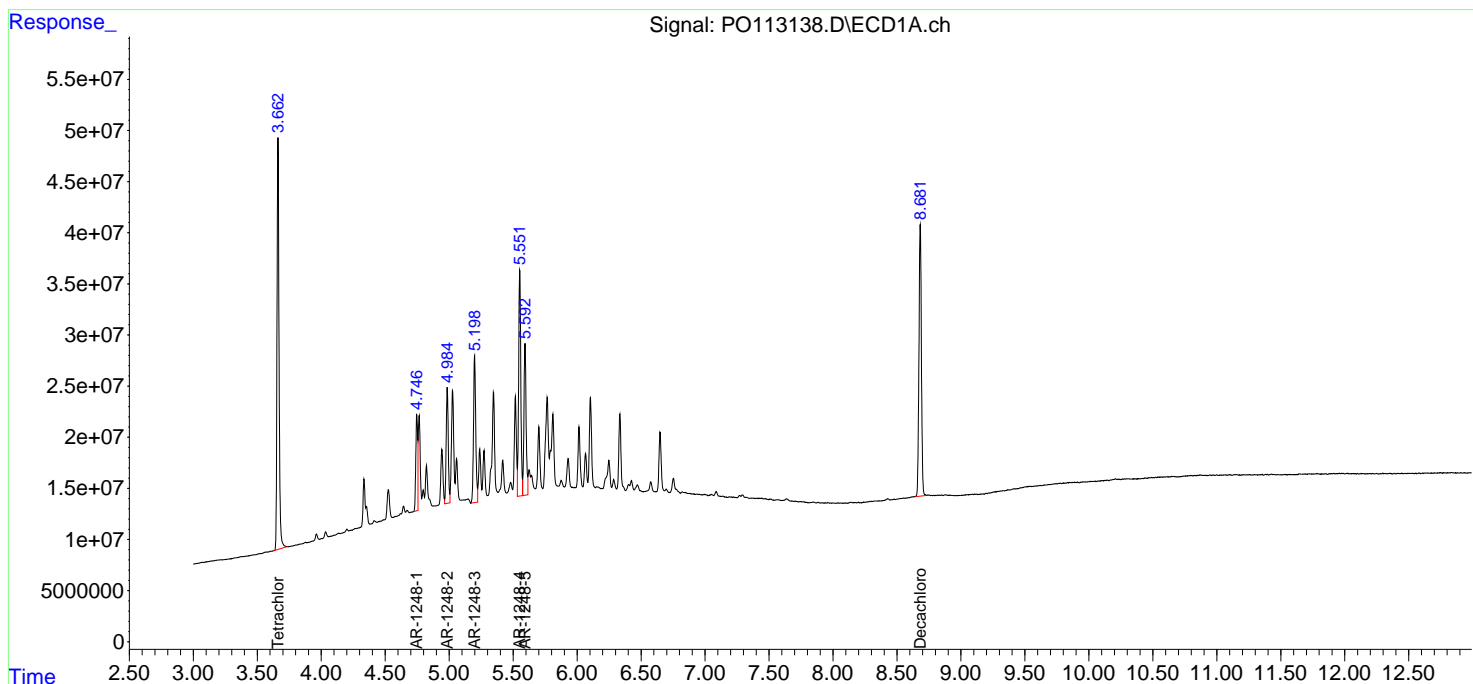
(f)=RT Delta > 1/2 Window (#)=Amounts differ by > 25% (m)=manual int.

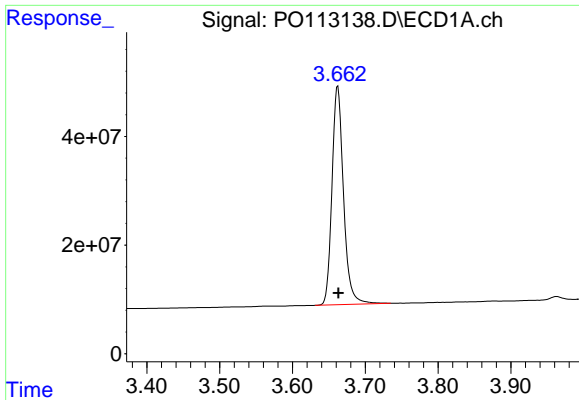
Data Path : Z:\pestpcbsrv\HPCHEM1\ECD\_O\Data\P0082125\  
 Data File : P0113138.D  
 Signal(s) : Signal #1: ECD1A.ch Signal #2: ECD2B.ch  
 Acq On : 21 Aug 2025 18:04  
 Operator : YP/AJ  
 Sample : AR1248CCC500  
 Misc :  
 ALS Vial : 5 Sample Multiplier: 1

Instrument :  
 ECD\_O  
 ClientSampleId :  
 AR1248CCC500

Integration File signal 1: autoint1.e  
 Integration File signal 2: autoint2.e  
 Quant Time: Aug 22 00:27:53 2025  
 Quant Method : Z:\pestpcbsrv\HPCHEM1\ECD\_O\methods\P0081825.M  
 Quant Title : GC EXTRACTABLES  
 QLast Update : Tue Aug 19 06:08:32 2025  
 Response via : Initial Calibration  
 Integrator: ChemStation

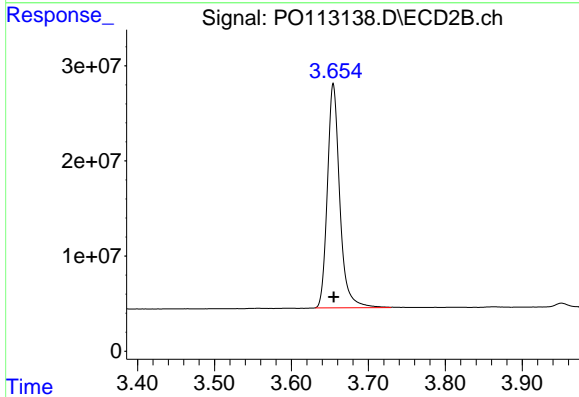
Volume Inj. : 2 µl  
 Signal #1 Phase : ZB-MR1 Signal #2 Phase: ZB-MR2  
 Signal #1 Info : 30Mx0.32mmx 0.50µ Signal #2 Info : 30M x 0.32mm x 0.25µm



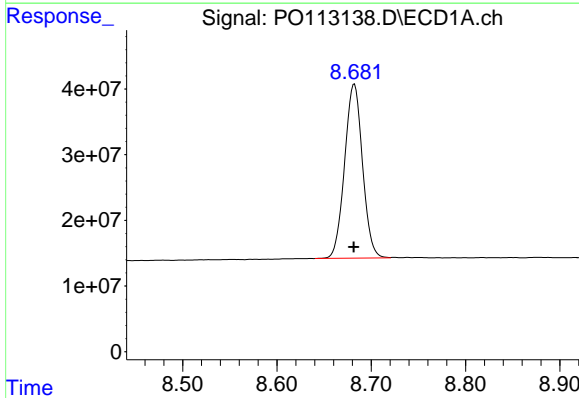


#1 Tetrachloro-m-xylene  
 R.T.: 3.662 min  
 Delta R.T.: 0.000 min  
 Response: 442953956  
 Conc: 54.11 ng/ml

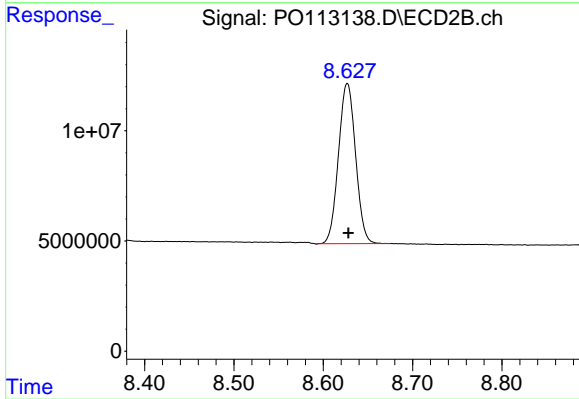
Instrument :  
 ECD\_O  
 ClientSampleId :  
 AR1248CCC500



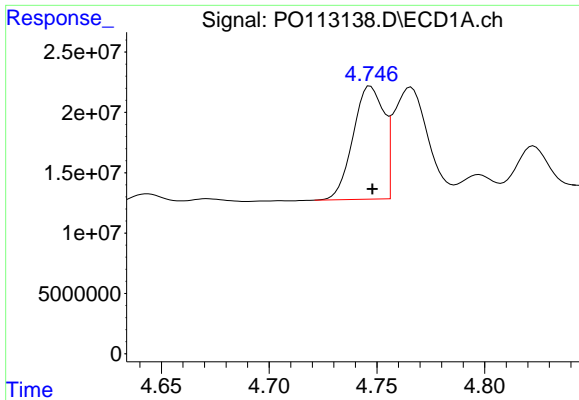
#1 Tetrachloro-m-xylene  
 R.T.: 3.654 min  
 Delta R.T.: 0.000 min  
 Response: 263291511  
 Conc: 52.03 ng/ml



#2 Decachlorobiphenyl  
 R.T.: 8.682 min  
 Delta R.T.: 0.000 min  
 Response: 349653185  
 Conc: 50.44 ng/ml



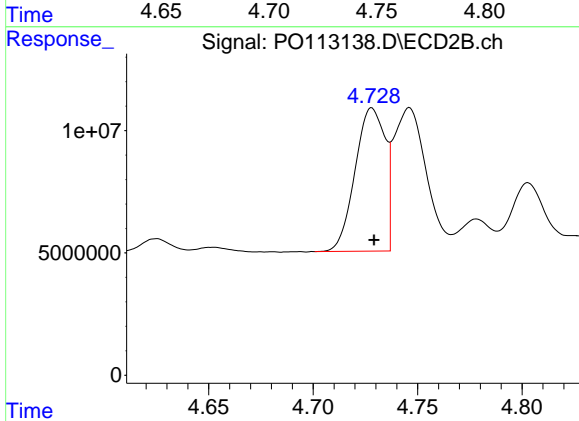
#2 Decachlorobiphenyl  
 R.T.: 8.627 min  
 Delta R.T.: -0.001 min  
 Response: 96745528  
 Conc: 51.06 ng/ml



#21 AR-1248-1

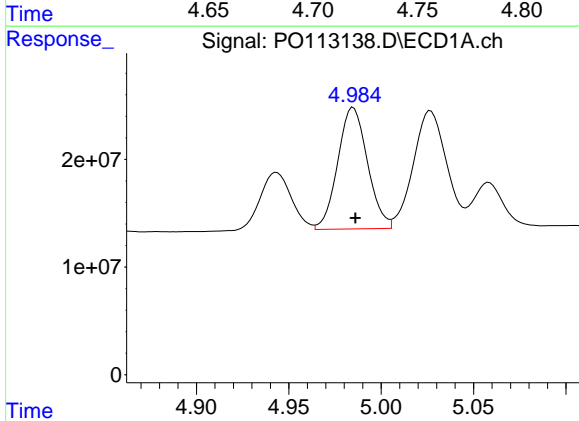
R.T.: 4.747 min  
 Delta R.T.: 0.000 min  
 Response: 93288040  
 Conc: 534.71 ng/ml

Instrument :  
 ECD\_O  
 ClientSampleId :  
 AR1248CCC500



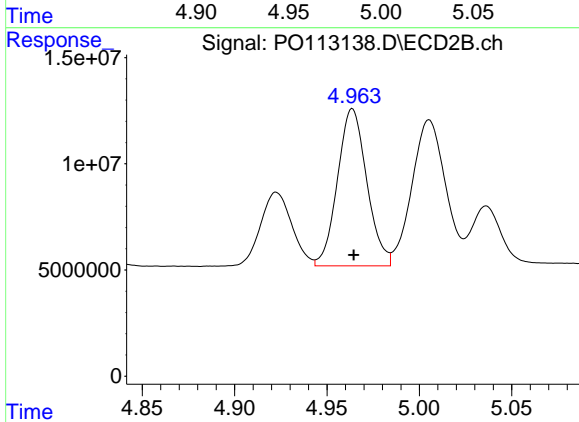
#21 AR-1248-1

R.T.: 4.728 min  
 Delta R.T.: -0.001 min  
 Response: 58441125  
 Conc: 524.08 ng/ml



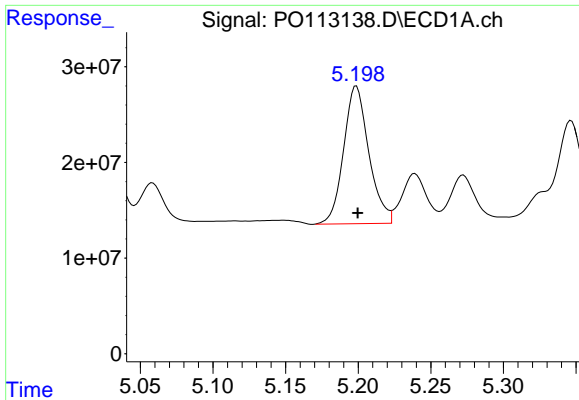
#22 AR-1248-2

R.T.: 4.985 min  
 Delta R.T.: -0.001 min  
 Response: 126513104  
 Conc: 523.07 ng/ml



#22 AR-1248-2

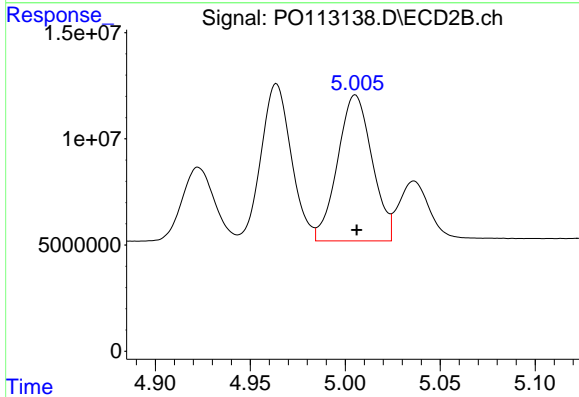
R.T.: 4.964 min  
 Delta R.T.: 0.000 min  
 Response: 81763287  
 Conc: 508.80 ng/ml



#23 AR-1248-3

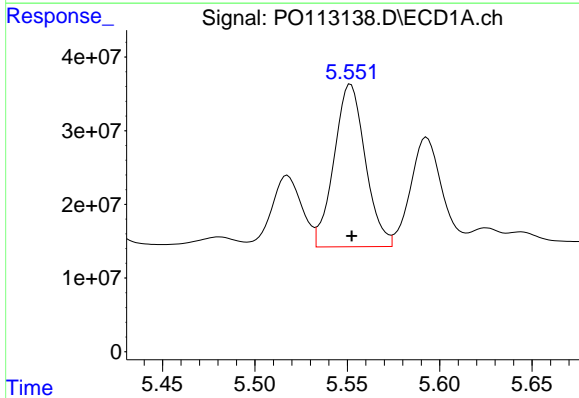
R.T.: 5.199 min  
 Delta R.T.: 0.000 min  
 Response: 173840738  
 Conc: 545.19 ng/ml

Instrument :  
 ECD\_O  
 ClientSampleId :  
 AR1248CCC500



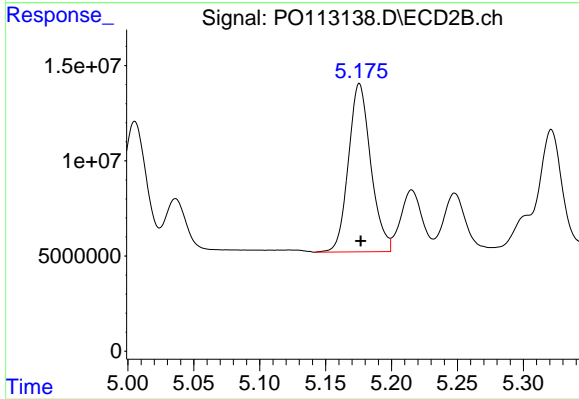
#23 AR-1248-3

R.T.: 5.005 min  
 Delta R.T.: 0.000 min  
 Response: 86898359  
 Conc: 512.19 ng/ml



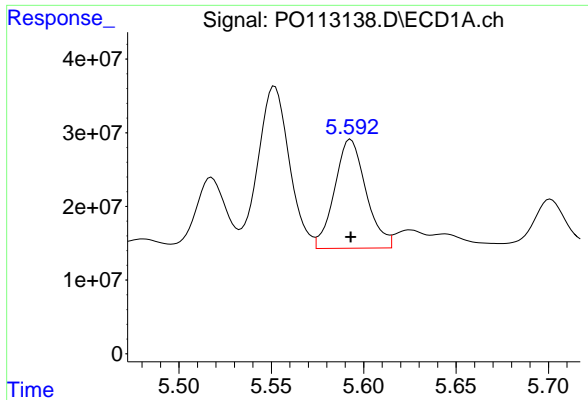
#24 AR-1248-4

R.T.: 5.552 min  
 Delta R.T.: 0.000 min  
 Response: 260065434  
 Conc: 520.54 ng/ml



#24 AR-1248-4

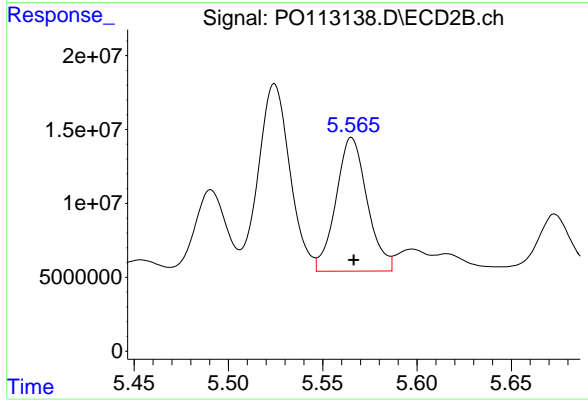
R.T.: 5.176 min  
 Delta R.T.: 0.000 min  
 Response: 104386086  
 Conc: 523.97 ng/ml



#25 AR-1248-5

R.T.: 5.593 min  
 Delta R.T.: 0.000 min  
 Response: 175252279  
 Conc: 513.20 ng/ml

Instrument :  
 ECD\_O  
 ClientSampleId :  
 AR1248CCC500



#25 AR-1248-5

R.T.: 5.565 min  
 Delta R.T.: -0.001 min  
 Response: 104355247  
 Conc: 491.55 ng/ml