

Data Path : Z:\pestpcbsrv\HPCHEM1\ECD_0\Data\P0082125\
 Data File : PO113139.D
 Signal(s) : Signal #1: ECD1A.ch Signal #2: ECD2B.ch
 Acq On : 21 Aug 2025 18:22
 Operator : YP/AJ
 Sample : AR1254CCC500
 Misc :
 ALS Vial : 6 Sample Multiplier: 1

Instrument :
 ECD_0
 ClientSampleId :
 AR1254CCC500

Integration File signal 1: autoint1.e
 Integration File signal 2: autoint2.e
 Quant Time: Aug 22 00:28:10 2025
 Quant Method : Z:\pestpcbsrv\HPCHEM1\ECD_0\methods\P0081825.M
 Quant Title : GC EXTRACTABLES
 QLast Update : Tue Aug 19 06:08:32 2025
 Response via : Initial Calibration
 Integrator: ChemStation

Volume Inj. : 2 µl
 Signal #1 Phase : ZB-MR1 Signal #2 Phase: ZB-MR2
 Signal #1 Info : 30Mx0.32mmx 0.50µ Signal #2 Info : 30M x 0.32mm x 0.25µm

Compound	RT#1	RT#2	Resp#1	Resp#2	ng/ml	ng/ml

System Monitoring Compounds						
1) SA Tetrachlo...	3.663	3.655	450.1E6	266.5E6	54.982	52.667
2) SA Decachlor...	8.681	8.628	356.6E6	98945188	51.447	52.218
Target Compounds						
26) L6 AR-1254-1	5.552	5.525	295.9E6	164.9E6	547.958	522.895
27) L6 AR-1254-2	5.702	5.673	267.8E6	145.6E6	542.648	519.277
28) L6 AR-1254-3	6.105	6.073	386.1E6	214.1E6	522.511	513.502
29) L6 AR-1254-4	6.335	6.301	278.2E6	135.5E6	499.496	492.953
30) L6 AR-1254-5	6.753	6.716	357.7E6	169.7E6	510.347	474.823

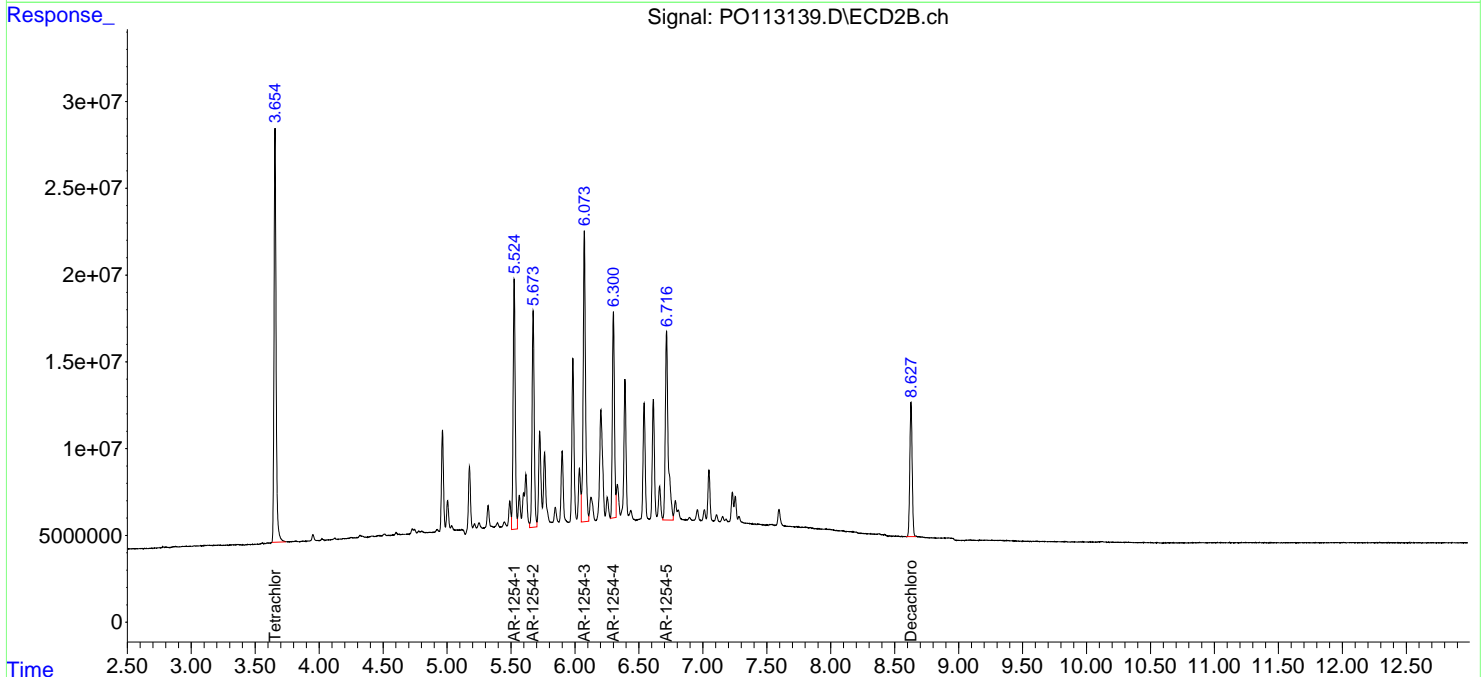
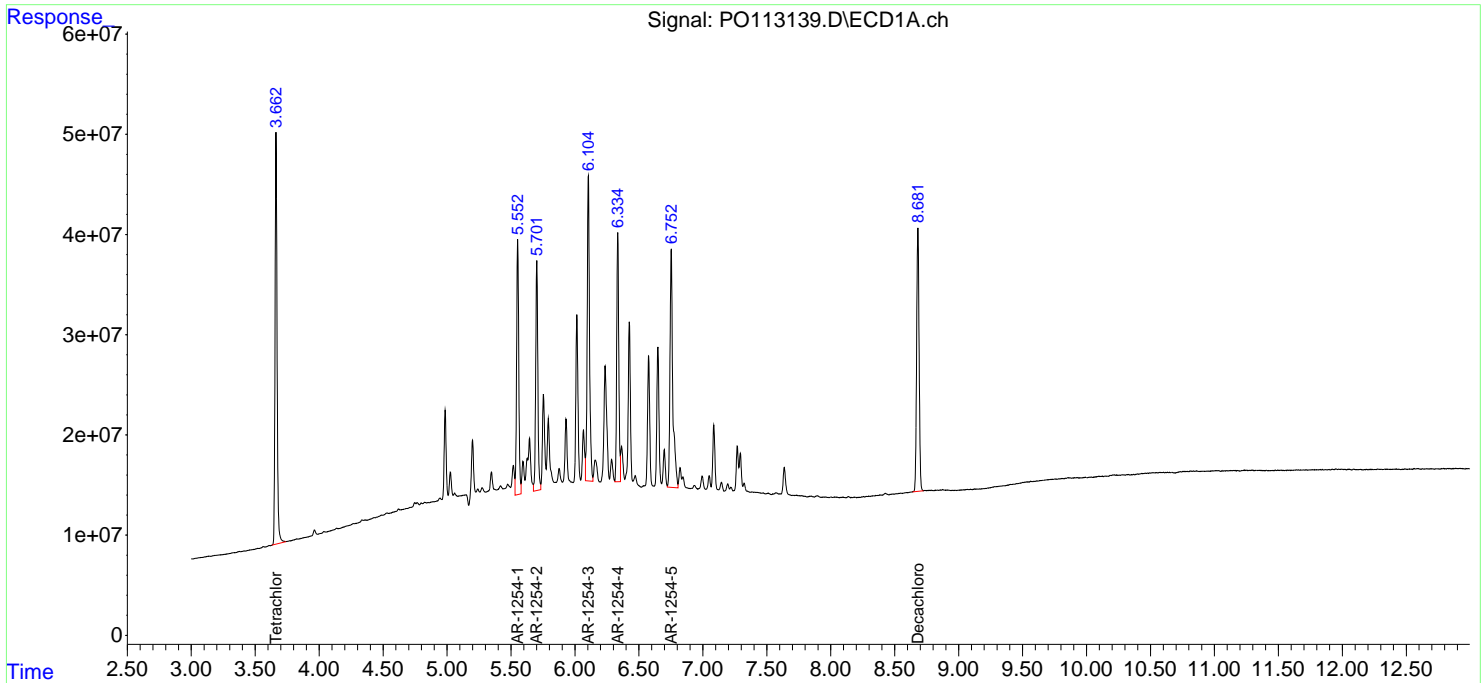
(f)=RT Delta > 1/2 Window (#)=Amounts differ by > 25% (m)=manual int.

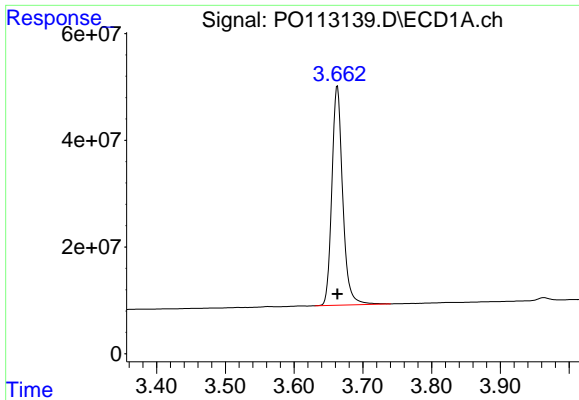
Data Path : Z:\pestpcbsrv\HPCHEM1\ECD_O\Data\P0082125\
 Data File : P0113139.D
 Signal(s) : Signal #1: ECD1A.ch Signal #2: ECD2B.ch
 Acq On : 21 Aug 2025 18:22
 Operator : YP/AJ
 Sample : AR1254CCC500
 Misc :
 ALS Vial : 6 Sample Multiplier: 1

Instrument :
 ECD_O
 ClientSampleId :
 AR1254CCC500

Integration File signal 1: autoint1.e
 Integration File signal 2: autoint2.e
 Quant Time: Aug 22 00:28:10 2025
 Quant Method : Z:\pestpcbsrv\HPCHEM1\ECD_O\methods\P0081825.M
 Quant Title : GC EXTRACTABLES
 QLast Update : Tue Aug 19 06:08:32 2025
 Response via : Initial Calibration
 Integrator: ChemStation

Volume Inj. : 2 µl
 Signal #1 Phase : ZB-MR1 Signal #2 Phase: ZB-MR2
 Signal #1 Info : 30Mx0.32mmx 0.50µ Signal #2 Info : 30M x 0.32mm x 0.25µm

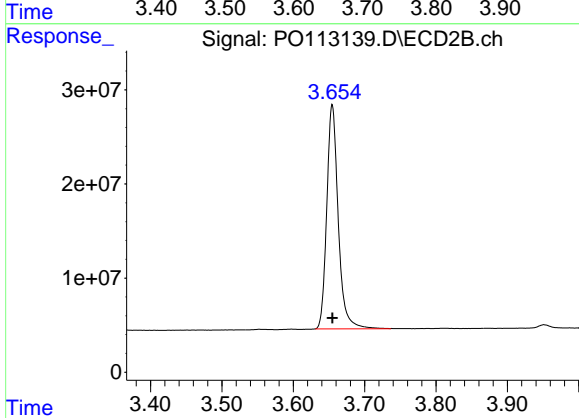




#1 Tetrachloro-m-xylene

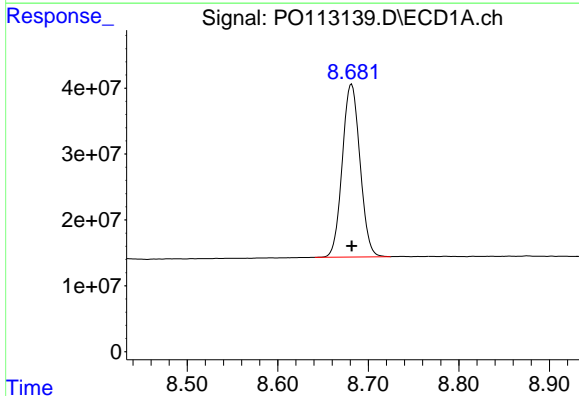
R.T.: 3.663 min
 Delta R.T.: 0.000 min
 Response: 450112386
 Conc: 54.98 ng/ml

Instrument :
 ECD_O
 ClientSampleId :
 AR1254CCC500



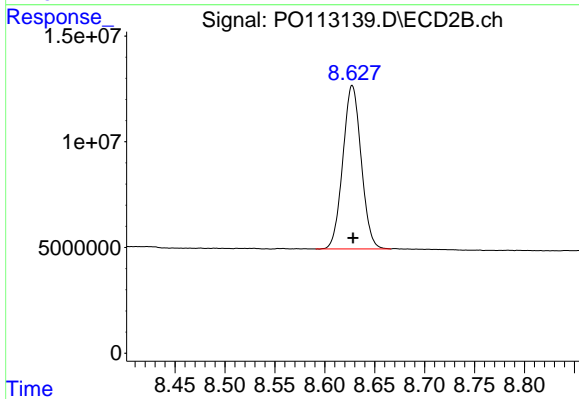
#1 Tetrachloro-m-xylene

R.T.: 3.655 min
 Delta R.T.: 0.000 min
 Response: 266529040
 Conc: 52.67 ng/ml



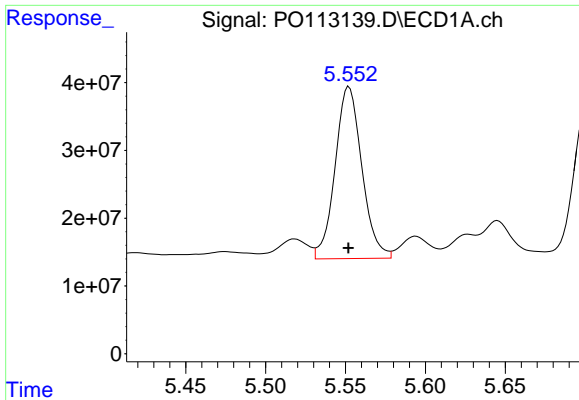
#2 Decachlorobiphenyl

R.T.: 8.681 min
 Delta R.T.: 0.000 min
 Response: 356600478
 Conc: 51.45 ng/ml



#2 Decachlorobiphenyl

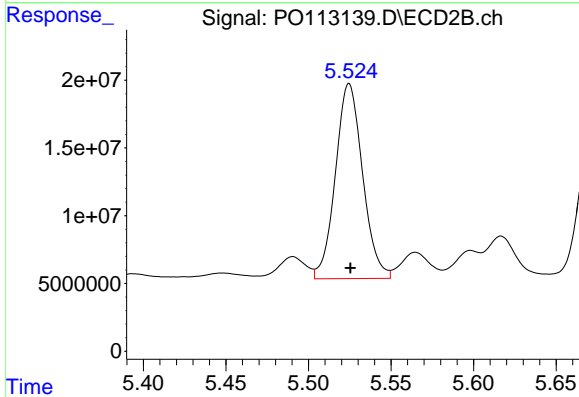
R.T.: 8.628 min
 Delta R.T.: 0.000 min
 Response: 98945188
 Conc: 52.22 ng/ml



#26 AR-1254-1

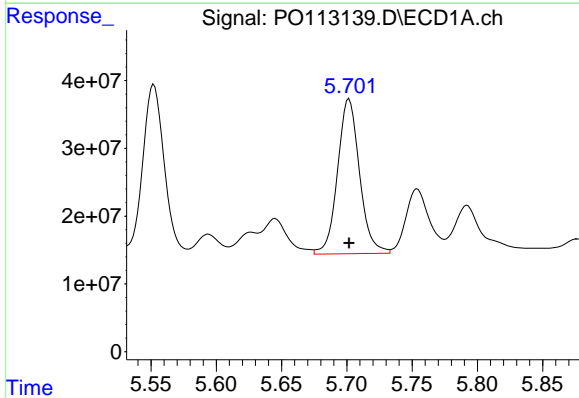
R.T.: 5.552 min
 Delta R.T.: 0.000 min
 Response: 295885461
 Conc: 547.96 ng/ml

Instrument :
 ECD_O
 ClientSampleId :
 AR1254CCC500



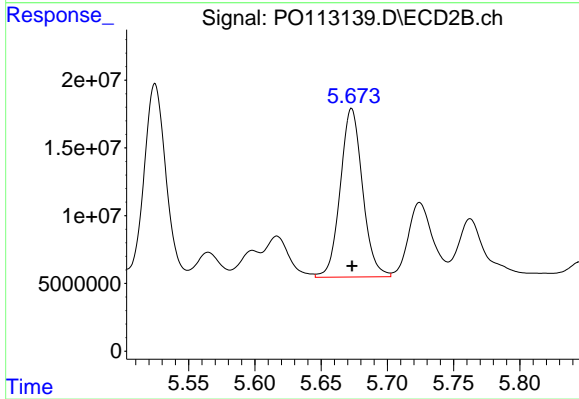
#26 AR-1254-1

R.T.: 5.525 min
 Delta R.T.: 0.000 min
 Response: 164896929
 Conc: 522.90 ng/ml



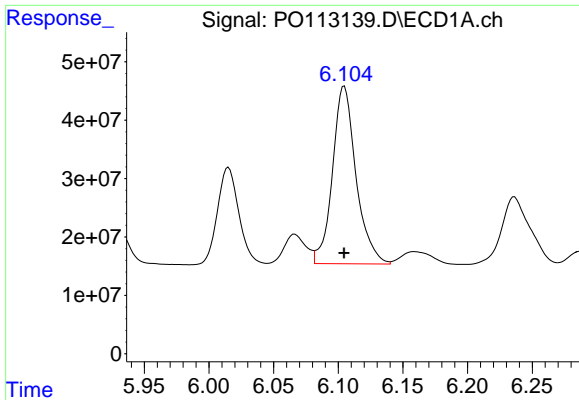
#27 AR-1254-2

R.T.: 5.702 min
 Delta R.T.: 0.000 min
 Response: 267771626
 Conc: 542.65 ng/ml



#27 AR-1254-2

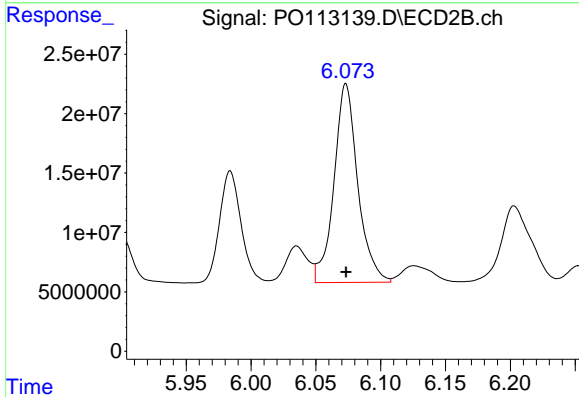
R.T.: 5.673 min
 Delta R.T.: 0.000 min
 Response: 145573631
 Conc: 519.28 ng/ml



#28 AR-1254-3

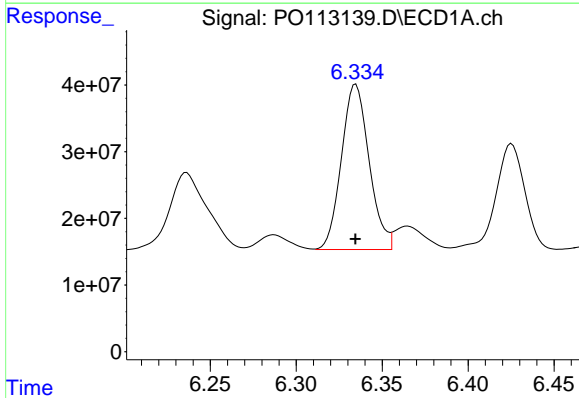
R.T.: 6.105 min
 Delta R.T.: 0.000 min
 Response: 386071397
 Conc: 522.51 ng/ml

Instrument :
 ECD_O
 ClientSampleId :
 AR1254CCC500



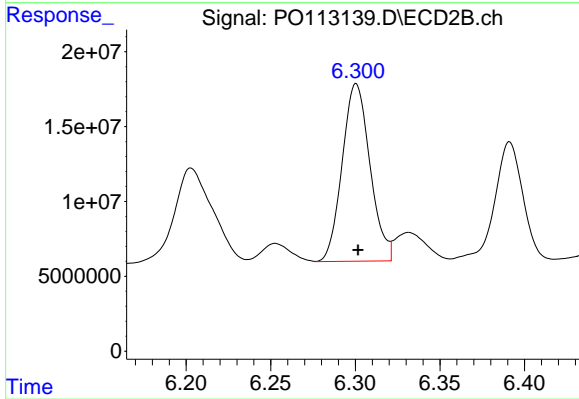
#28 AR-1254-3

R.T.: 6.073 min
 Delta R.T.: 0.000 min
 Response: 214090434
 Conc: 513.50 ng/ml



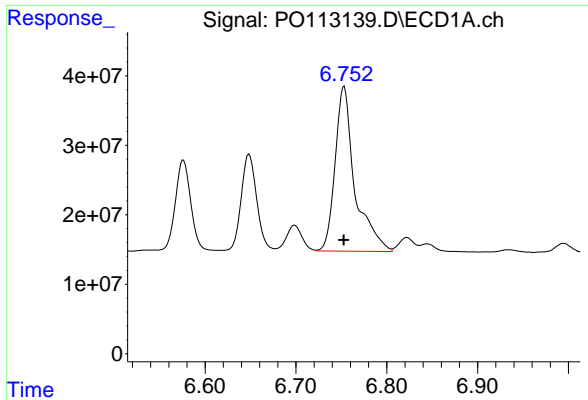
#29 AR-1254-4

R.T.: 6.335 min
 Delta R.T.: 0.000 min
 Response: 278219176
 Conc: 499.50 ng/ml



#29 AR-1254-4

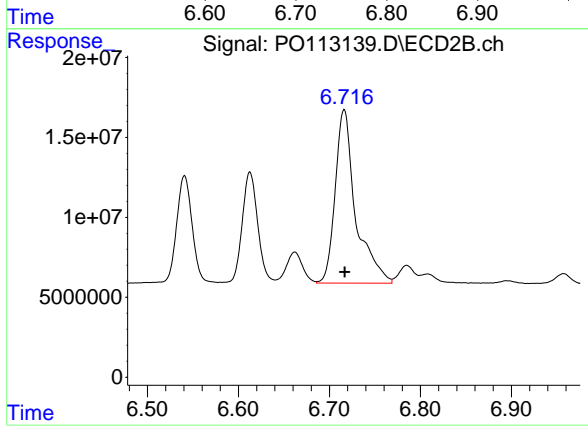
R.T.: 6.301 min
 Delta R.T.: -0.001 min
 Response: 135480907
 Conc: 492.95 ng/ml



#30 AR-1254-5

R.T.: 6.753 min
 Delta R.T.: 0.000 min
 Response: 357740179
 Conc: 510.35 ng/ml

Instrument :
 ECD_O
 ClientSampleId :
 AR1254CCC500



#30 AR-1254-5

R.T.: 6.716 min
 Delta R.T.: 0.000 min
 Response: 169744667
 Conc: 474.82 ng/ml