

Data Path : Z:\pestpcbsrv\HPCHEM1\ECD_0\Data\P0082125\
 Data File : P0113144.D
 Signal(s) : Signal #1: ECD1A.ch Signal #2: ECD2B.ch
 Acq On : 21 Aug 2025 19:54
 Operator : YP/AJ
 Sample : Q2914-19
 Misc :
 ALS Vial : 22 Sample Multiplier: 1

Instrument :
 ECD_0
ClientSampleId :
 K262-15A

Manual Integrations
APPROVED

Reviewed By :Yogesh Patel 08/22/2025
 Supervised By :mohammad ahmed 08/25/2025

Integration File signal 1: autoint1.e
 Integration File signal 2: autoint2.e
 Quant Time: Aug 22 00:29:36 2025
 Quant Method : Z:\pestpcbsrv\HPCHEM1\ECD_0\methods\P0081825.M
 Quant Title : GC EXTRACTABLES
 QLast Update : Tue Aug 19 06:08:32 2025
 Response via : Initial Calibration
 Integrator: ChemStation

Volume Inj. : 2 µl
 Signal #1 Phase : ZB-MR1 Signal #2 Phase: ZB-MR2
 Signal #1 Info : 30Mx0.32mmx 0.50µ Signal #2 Info : 30M x 0.32mm x 0.25µm

Compound	RT#1	RT#2	Resp#1	Resp#2	ng/ml	ng/ml

System Monitoring Compounds						
1) SA Tetrachlo...	3.663	3.654	213.0E6	126.8E6	26.015	25.055
2) SA Decachlor...	8.688	8.632	337.2E6	97060424	48.652m	51.223m

Target Compounds

(f)=RT Delta > 1/2 Window (#)=Amounts differ by > 25% (m)=manual int.

Data Path : Z:\pestpcbsrv\HPCHEM1\ECD_0\Data\P0082125\
 Data File : P0113144.D
 Signal(s) : Signal #1: ECD1A.ch Signal #2: ECD2B.ch
 Acq On : 21 Aug 2025 19:54
 Operator : YP/AJ
 Sample : Q2914-19
 Misc :
 ALS Vial : 22 Sample Multiplier: 1

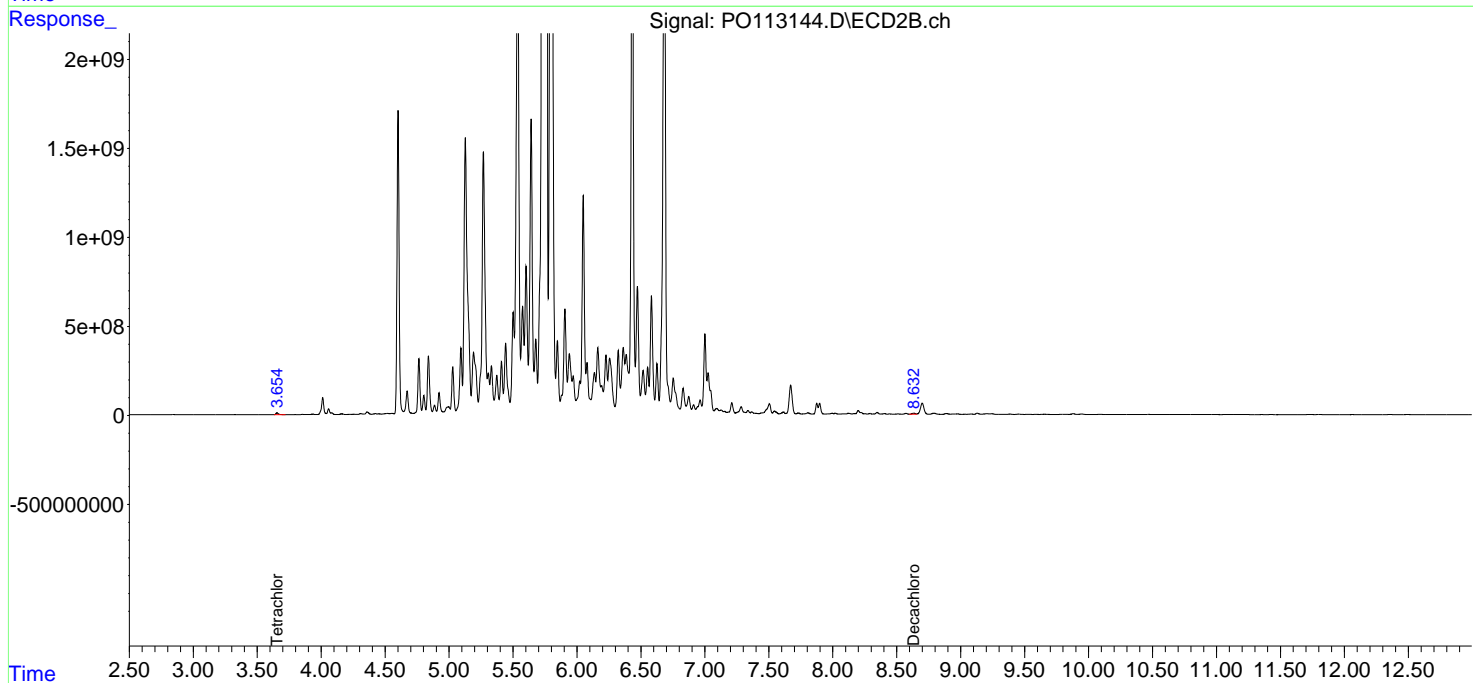
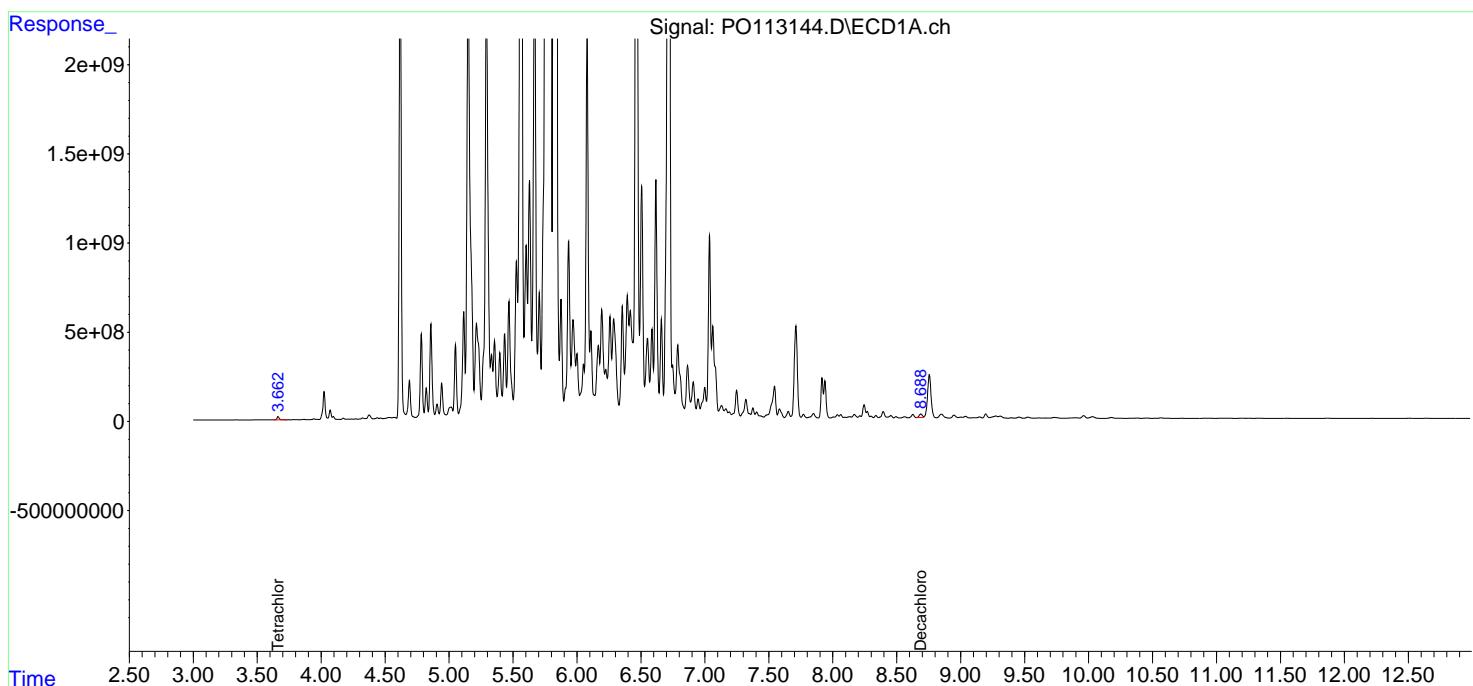
Instrument :
 ECD_0
 ClientSampleId :
 K262-15A

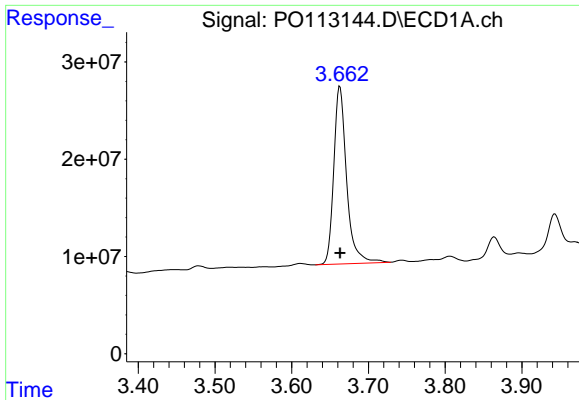
Manual Integrations
APPROVED

Reviewed By :Yogesh Patel 08/22/2025
 Supervised By :mohammad ahmed 08/25/2025

Integration File signal 1: autoint1.e
 Integration File signal 2: autoint2.e
 Quant Time: Aug 22 00:29:36 2025
 Quant Method : Z:\pestpcbsrv\HPCHEM1\ECD_0\methods\P0081825.M
 Quant Title : GC EXTRACTABLES
 QLast Update : Tue Aug 19 06:08:32 2025
 Response via : Initial Calibration
 Integrator: ChemStation

Volume Inj. : 2 µl
 Signal #1 Phase : ZB-MR1 Signal #2 Phase: ZB-MR2
 Signal #1 Info : 30Mx0.32mmx 0.50µ Signal #2 Info : 30M x 0.32mm x 0.25µm





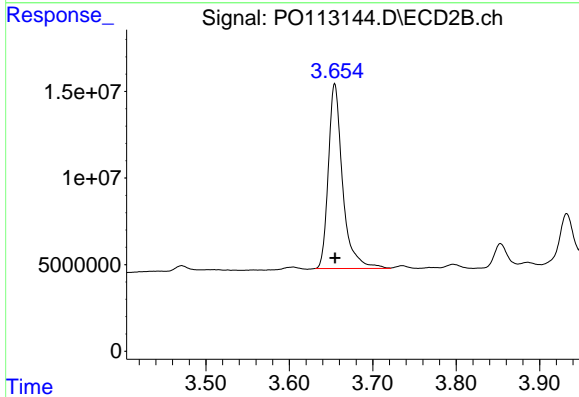
#1 Tetrachloro-m-xylene

R.T.: 3.663 min
 Delta R.T.: 0.000 min
 Response: 212977105
 Conc: 26.02 ng/ml

Instrument :
 ECD_O
 ClientSampleId :
 K262-15A

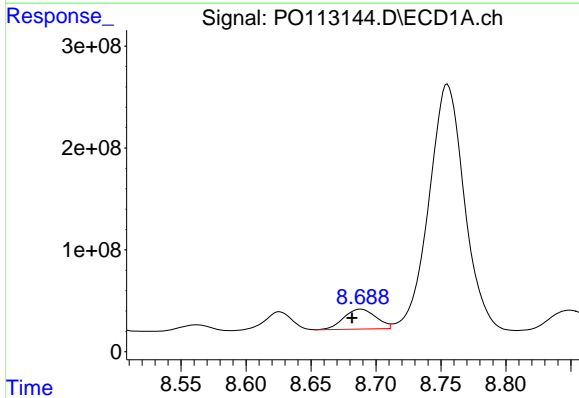
Manual Integrations
 APPROVED

Reviewed By :Yogesh Patel 08/22/2025
 Supervised By :mohammad ahmed 08/25/2025



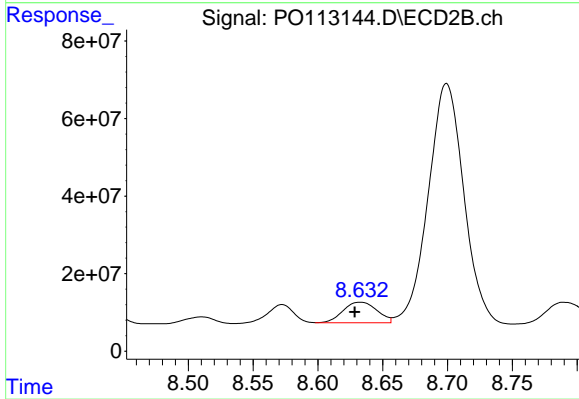
#1 Tetrachloro-m-xylene

R.T.: 3.654 min
 Delta R.T.: 0.000 min
 Response: 126794189
 Conc: 25.05 ng/ml



#2 Decachlorobiphenyl

R.T.: 8.688 min
 Delta R.T.: 0.006 min
 Response: 337230928
 Conc: 48.65 ng/ml m



#2 Decachlorobiphenyl

R.T.: 8.632 min
 Delta R.T.: 0.003 min
 Response: 97060424
 Conc: 51.22 ng/ml m