

Data Path : Z:\pestpcbsrv\HPCHEM1\ECD_0\Data\P0082125\
 Data File : P0113145.D
 Signal(s) : Signal #1: ECD1A.ch Signal #2: ECD2B.ch
 Acq On : 21 Aug 2025 20:13
 Operator : YP/AJ
 Sample : Q2922-02
 Misc :
 ALS Vial : 23 Sample Multiplier: 1

Instrument :
 ECD_0
ClientSampleId :
 K262-16A

Manual Integrations
APPROVED

Reviewed By :Yogesh Patel 08/22/2025
 Supervised By :mohammad ahmed 08/25/2025

Integration File signal 1: autoint1.e
 Integration File signal 2: autoint2.e
 Quant Time: Aug 22 00:29:50 2025
 Quant Method : Z:\pestpcbsrv\HPCHEM1\ECD_0\methods\P0081825.M
 Quant Title : GC EXTRACTABLES
 QLast Update : Tue Aug 19 06:08:32 2025
 Response via : Initial Calibration
 Integrator: ChemStation

Volume Inj. : 2 µl
 Signal #1 Phase : ZB-MR1 Signal #2 Phase: ZB-MR2
 Signal #1 Info : 30Mx0.32mmx 0.50µ Signal #2 Info : 30M x 0.32mm x 0.25µm

Compound	RT#1	RT#2	Resp#1	Resp#2	ng/ml	ng/ml

System Monitoring Compounds						
1) SA Tetrachlo...	3.662	3.654	175.3E6	104.2E6	21.419	20.591
2) SA Decachlor...	8.679	8.625	189.6E6	53933050	27.352	28.463
Target Compounds						
26) L6 AR-1254-1	5.559	5.532	256.8E6	149.3E6	475.638	473.362
27) L6 AR-1254-2	5.702	5.673	106.8E6	56145572	216.395	200.277
28) L6 AR-1254-3	6.104	6.073	181.7E6	106.8E6	245.881	256.242
29) L6 AR-1254-4	6.333	6.300	117.0E6	63215296	210.082	230.011
30) L6 AR-1254-5	6.750	6.715	429.7E6	212.8E6	613.032m	595.365

(f)=RT Delta > 1/2 Window (#)=Amounts differ by > 25% (m)=manual int.

Data Path : Z:\pestpcbsrv\HPCHEM1\ECD_O\Data\PO082125\
 Data File : PO113145.D
 Signal(s) : Signal #1: ECD1A.ch Signal #2: ECD2B.ch
 Acq On : 21 Aug 2025 20:13
 Operator : YP/AJ
 Sample : Q2922-02
 Misc :
 ALS Vial : 23 Sample Multiplier: 1

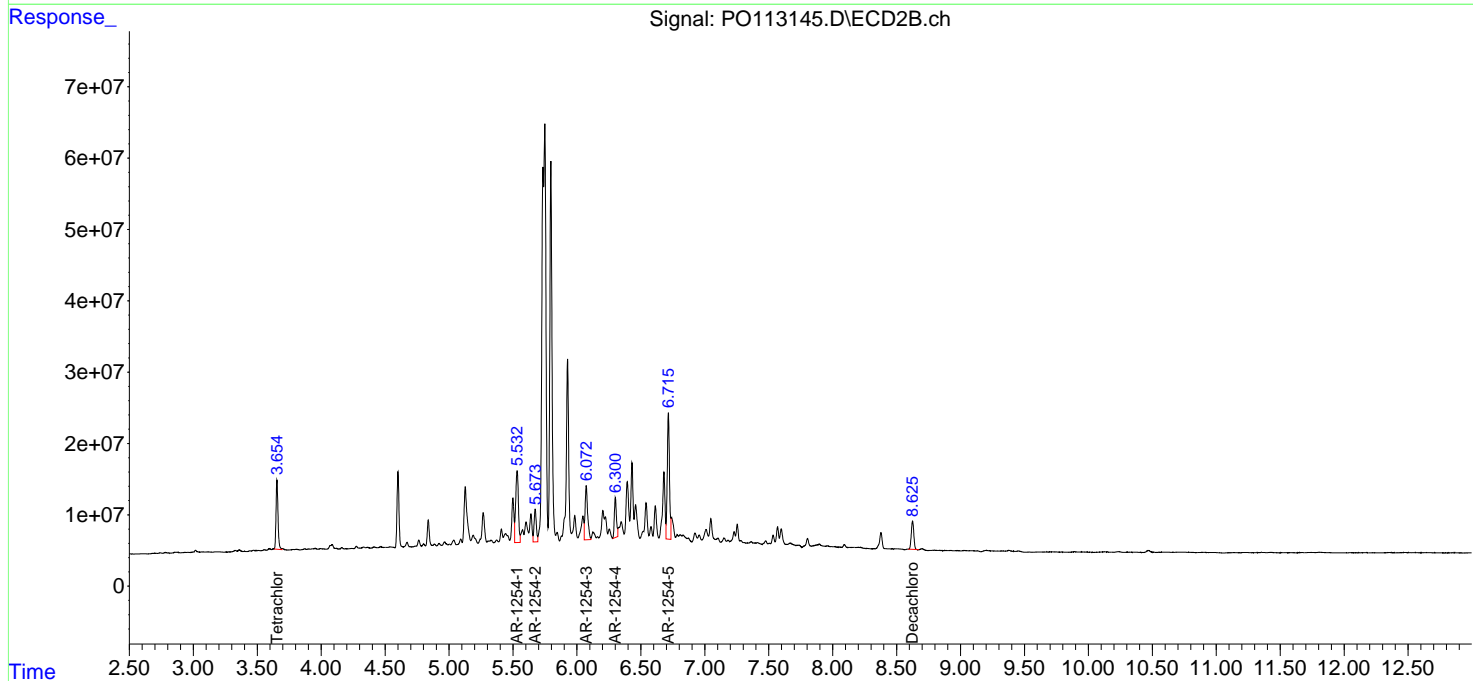
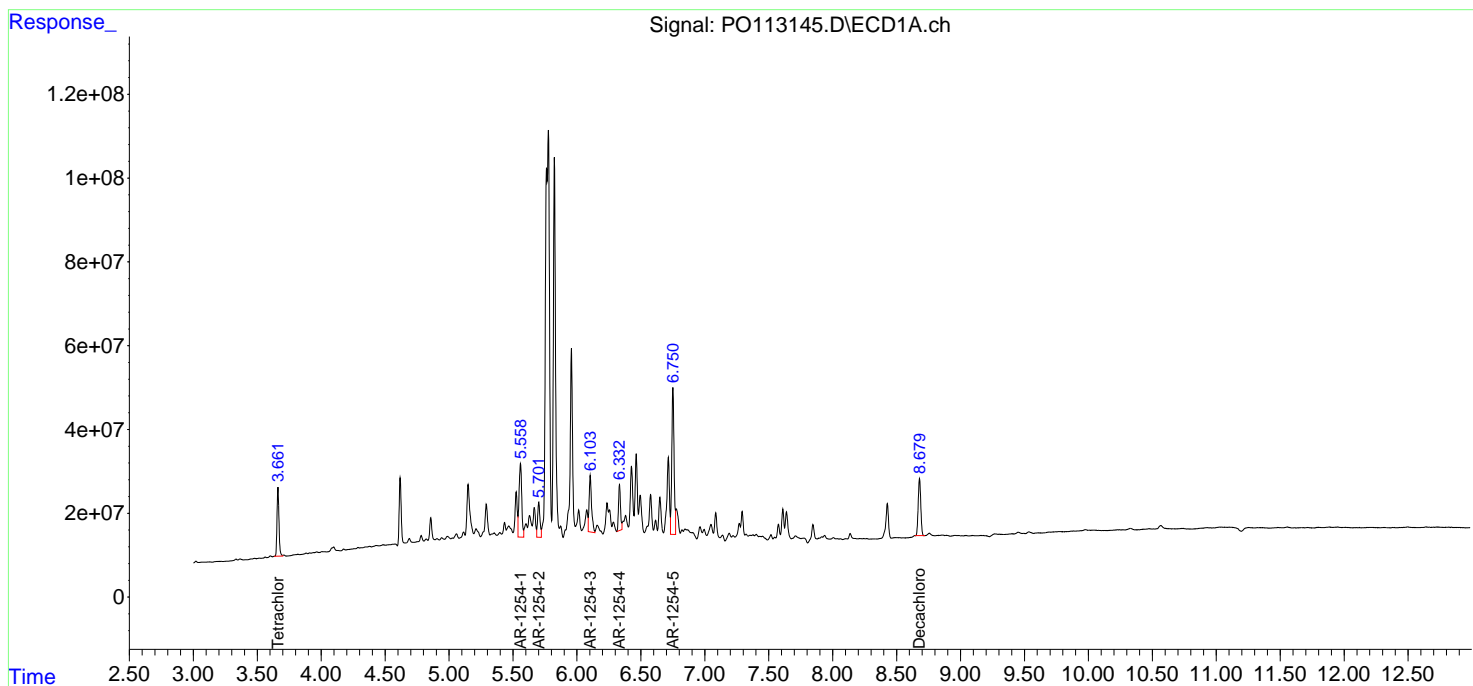
Instrument :
 ECD_O
 ClientSampleId :
 K262-16A

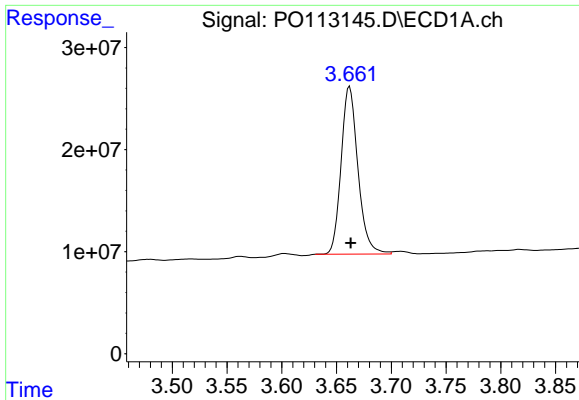
Manual Integrations
 APPROVED

Reviewed By :Yogesh Patel 08/22/2025
 Supervised By :mohammad ahmed 08/25/2025

Integration File signal 1: autoint1.e
 Integration File signal 2: autoint2.e
 Quant Time: Aug 22 00:29:50 2025
 Quant Method : Z:\pestpcbsrv\HPCHEM1\ECD_O\methods\PO081825.M
 Quant Title : GC EXTRACTABLES
 QLast Update : Tue Aug 19 06:08:32 2025
 Response via : Initial Calibration
 Integrator: ChemStation

Volume Inj. : 2 µl
 Signal #1 Phase : ZB-MR1 Signal #2 Phase: ZB-MR2
 Signal #1 Info : 30Mx0.32mmx 0.50µ Signal #2 Info : 30M x 0.32mm x 0.25µm



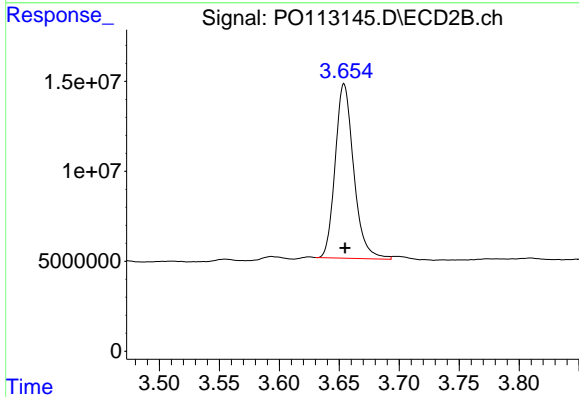


#1 Tetrachloro-m-xylene
 R.T.: 3.662 min
 Delta R.T.: -0.001 min
 Response: 175347837
 Conc: 21.42 ng/ml

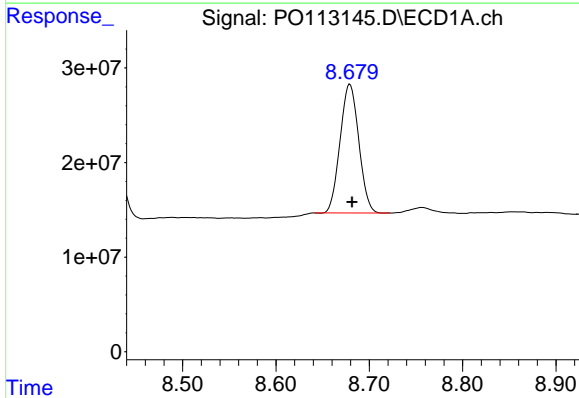
Instrument :
 ECD_O
 ClientSampleId :
 K262-16A

Manual Integrations
 APPROVED

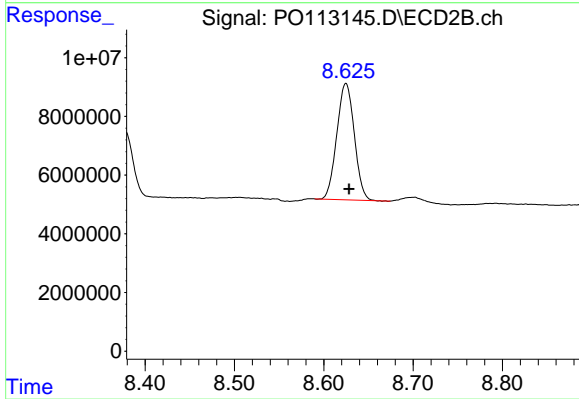
Reviewed By :Yogesh Patel 08/22/2025
 Supervised By :mohammad ahmed 08/25/2025



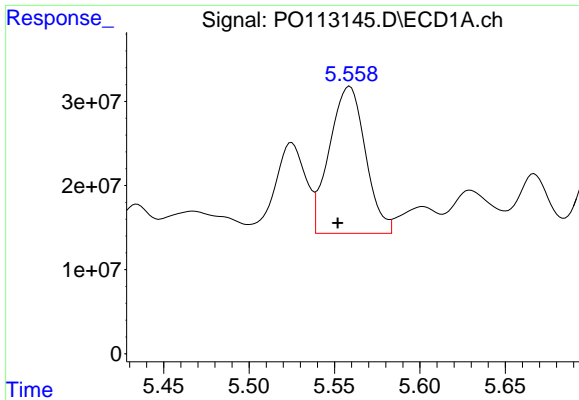
#1 Tetrachloro-m-xylene
 R.T.: 3.654 min
 Delta R.T.: 0.000 min
 Response: 104204653
 Conc: 20.59 ng/ml



#2 Decachlorobiphenyl
 R.T.: 8.679 min
 Delta R.T.: -0.002 min
 Response: 189586131
 Conc: 27.35 ng/ml



#2 Decachlorobiphenyl
 R.T.: 8.625 min
 Delta R.T.: -0.004 min
 Response: 53933050
 Conc: 28.46 ng/ml



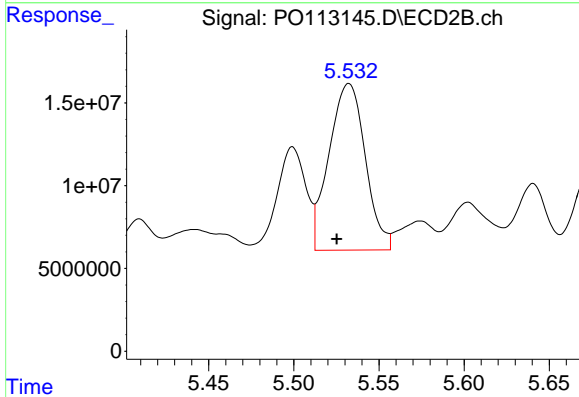
#26 AR-1254-1

R.T.: 5.559 min
 Delta R.T.: 0.007 min
 Response: 256834190
 Conc: 475.64 ng/ml

Instrument :
 ECD_O
 ClientSampleId :
 K262-16A

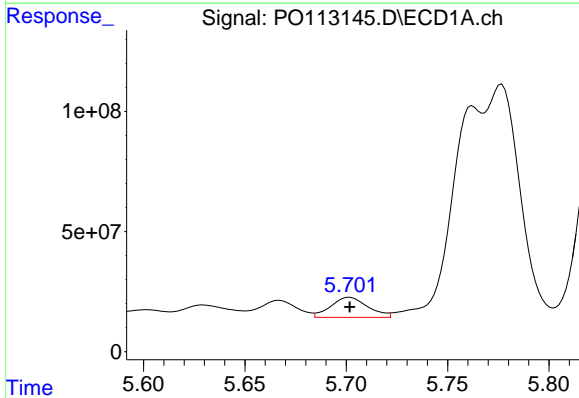
Manual Integrations
 APPROVED

Reviewed By :Yogesh Patel 08/22/2025
 Supervised By :mohammad ahmed 08/25/2025



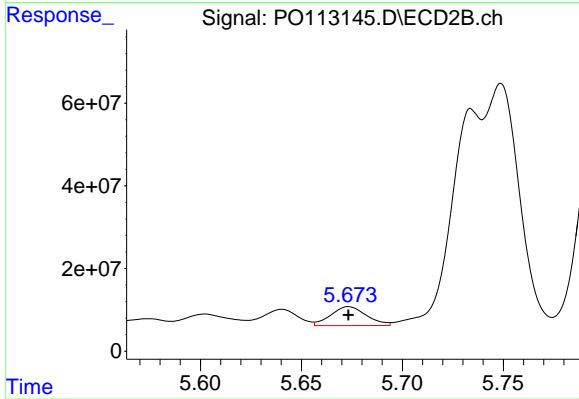
#26 AR-1254-1

R.T.: 5.532 min
 Delta R.T.: 0.007 min
 Response: 149276590
 Conc: 473.36 ng/ml



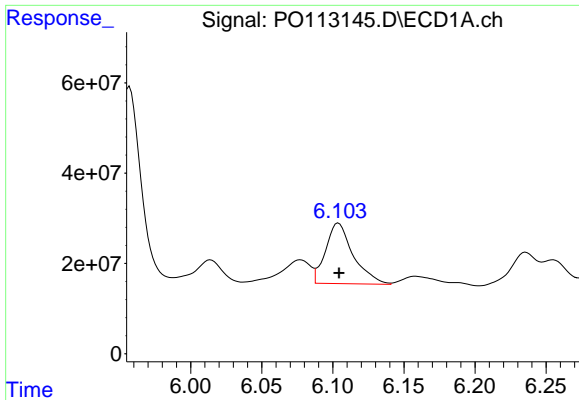
#27 AR-1254-2

R.T.: 5.702 min
 Delta R.T.: 0.000 min
 Response: 106780732
 Conc: 216.39 ng/ml



#27 AR-1254-2

R.T.: 5.673 min
 Delta R.T.: 0.000 min
 Response: 56145572
 Conc: 200.28 ng/ml



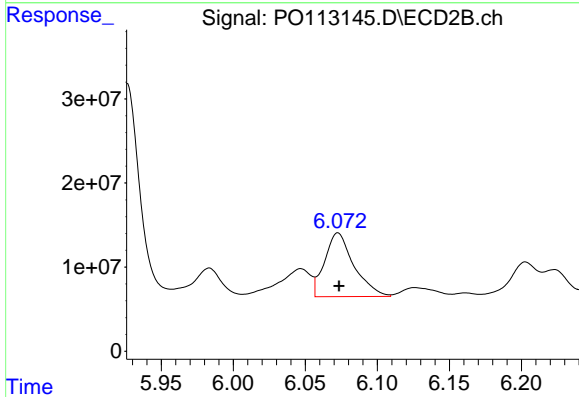
#28 AR-1254-3

R.T.: 6.104 min
 Delta R.T.: 0.000 min
 Response: 181675649
 Conc: 245.88 ng/ml

Instrument :
 ECD_O
 ClientSampleId :
 K262-16A

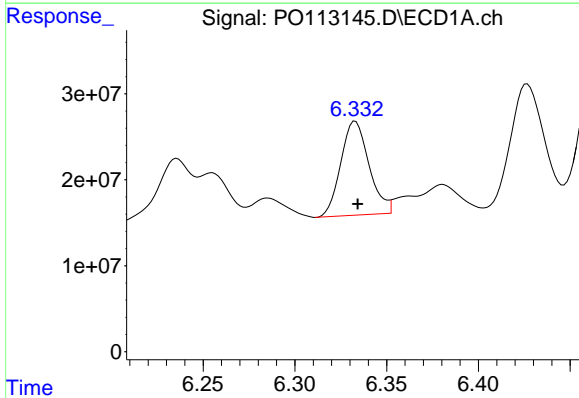
Manual Integrations
 APPROVED

Reviewed By :Yogesh Patel 08/22/2025
 Supervised By :mohammad ahmed 08/25/2025



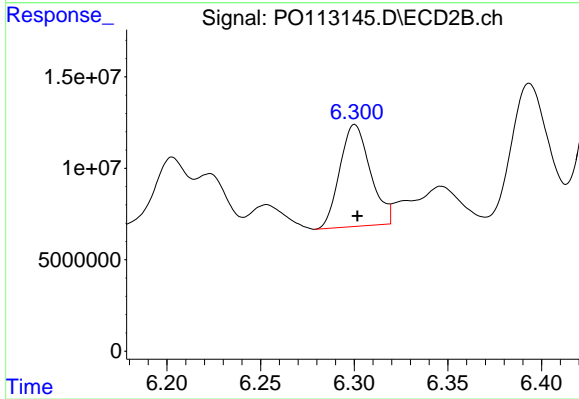
#28 AR-1254-3

R.T.: 6.073 min
 Delta R.T.: 0.000 min
 Response: 106832864
 Conc: 256.24 ng/ml



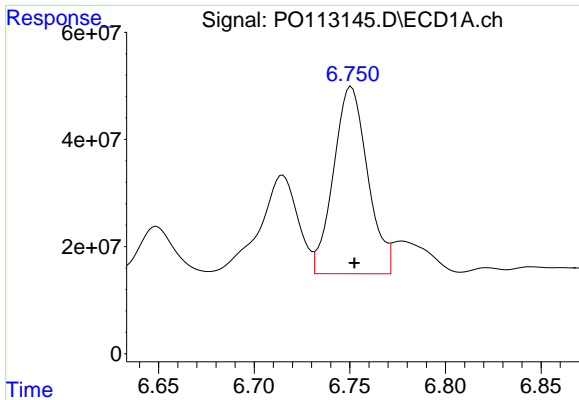
#29 AR-1254-4

R.T.: 6.333 min
 Delta R.T.: -0.001 min
 Response: 117015366
 Conc: 210.08 ng/ml



#29 AR-1254-4

R.T.: 6.300 min
 Delta R.T.: -0.001 min
 Response: 63215296
 Conc: 230.01 ng/ml



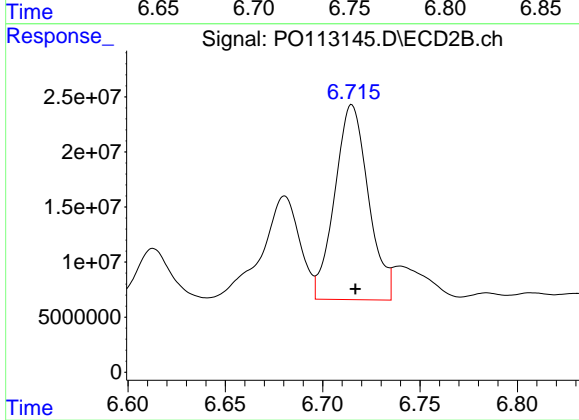
#30 AR-1254-5

R.T.: 6.750 min
 Delta R.T.: -0.002 min
 Response: 429719509
 Conc: 613.03 ng/ml

Instrument :
 ECD_O
 ClientSampleId :
 K262-16A

Manual Integrations
 APPROVED

Reviewed By :Yogesh Patel 08/22/2025
 Supervised By :mohammad ahmed 08/25/2025



#30 AR-1254-5

R.T.: 6.715 min
 Delta R.T.: -0.002 min
 Response: 212837512
 Conc: 595.37 ng/ml