

Data Path : Z:\pestpcbsrv\HPCHEM1\ECD_0\Data\P0082125\
 Data File : P0113147.D
 Signal(s) : Signal #1: ECD1A.ch Signal #2: ECD2B.ch
 Acq On : 21 Aug 2025 20:49
 Operator : YP/AJ
 Sample : Q2922-08
 Misc :
 ALS Vial : 25 Sample Multiplier: 1

Instrument :
 ECD_0
ClientSampleId :
 K262-18A

Manual Integrations
APPROVED
 Reviewed By :Yogesh Patel 08/22/2025
 Supervised By :mohammad ahmed 08/25/2025

Integration File signal 1: autoint1.e
 Integration File signal 2: autoint2.e
 Quant Time: Aug 22 00:30:19 2025
 Quant Method : Z:\pestpcbsrv\HPCHEM1\ECD_0\methods\P0081825.M
 Quant Title : GC EXTRACTABLES
 QLast Update : Tue Aug 19 06:08:32 2025
 Response via : Initial Calibration
 Integrator: ChemStation

Volume Inj. : 2 µl
 Signal #1 Phase : ZB-MR1 Signal #2 Phase: ZB-MR2
 Signal #1 Info : 30Mx0.32mmx 0.50µ Signal #2 Info : 30M x 0.32mm x 0.25µm

Compound	RT#1	RT#2	Resp#1	Resp#2	ng/ml	ng/ml

System Monitoring Compounds						
1) SA Tetrachlo...	3.662	3.654	176.1E6	105.4E6	21.506	20.831
2) SA Decachlor...	8.678	8.623	162.0E6	45717892	23.375	24.127
Target Compounds						
26) L6 AR-1254-1	5.559	5.532	306.7E6	171.7E6	568.069	544.556
27) L6 AR-1254-2	5.701	5.673	120.4E6	60183654	243.937	214.682
28) L6 AR-1254-3	6.104	6.072	181.2E6	103.7E6	245.178	248.625
29) L6 AR-1254-4	6.332	6.300	115.2E6	59130315	206.760	215.148
30) L6 AR-1254-5	6.750	6.714	508.9E6	243.1E6	726.038	679.914m

(f)=RT Delta > 1/2 Window (#)=Amounts differ by > 25% (m)=manual int.

Data Path : Z:\pestpcbsrv\HPCHEM1\ECD_0\Data\PO082125\
 Data File : PO113147.D
 Signal(s) : Signal #1: ECD1A.ch Signal #2: ECD2B.ch
 Acq On : 21 Aug 2025 20:49
 Operator : YP/AJ
 Sample : Q2922-08
 Misc :
 ALS Vial : 25 Sample Multiplier: 1

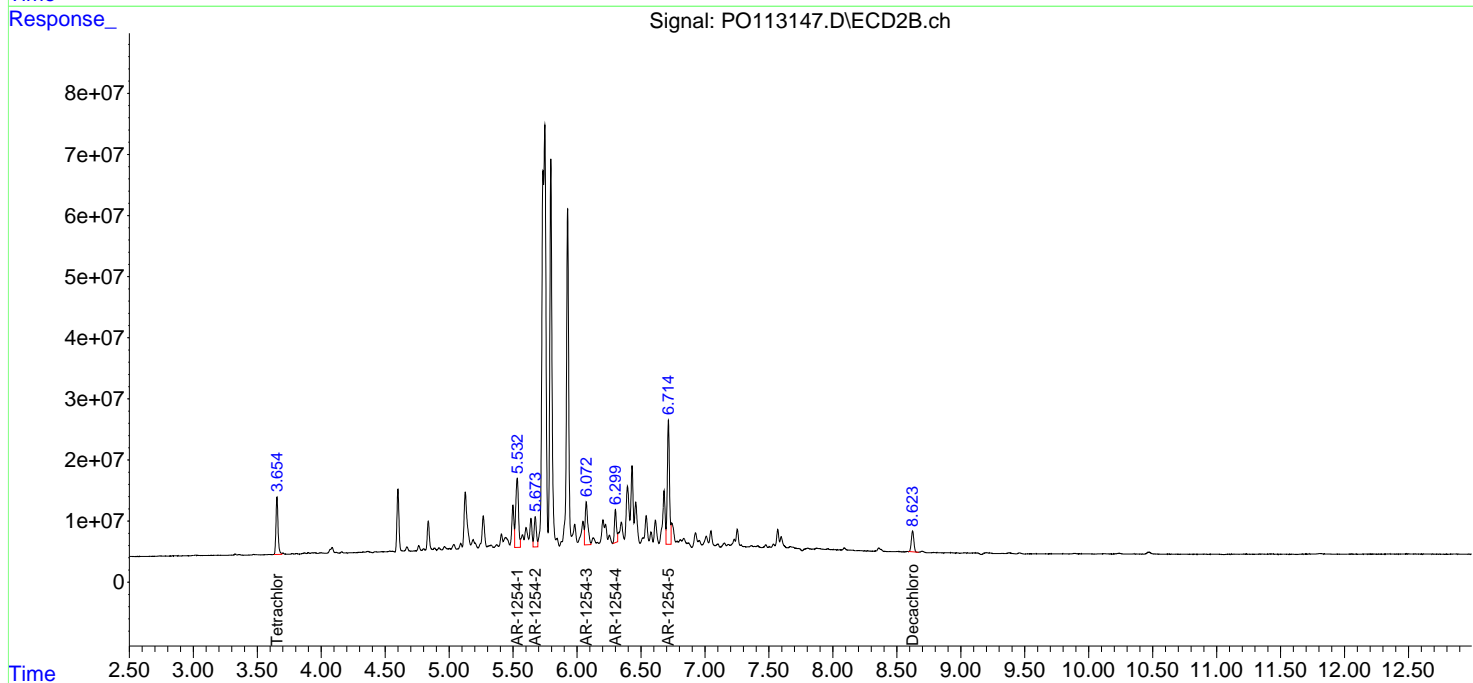
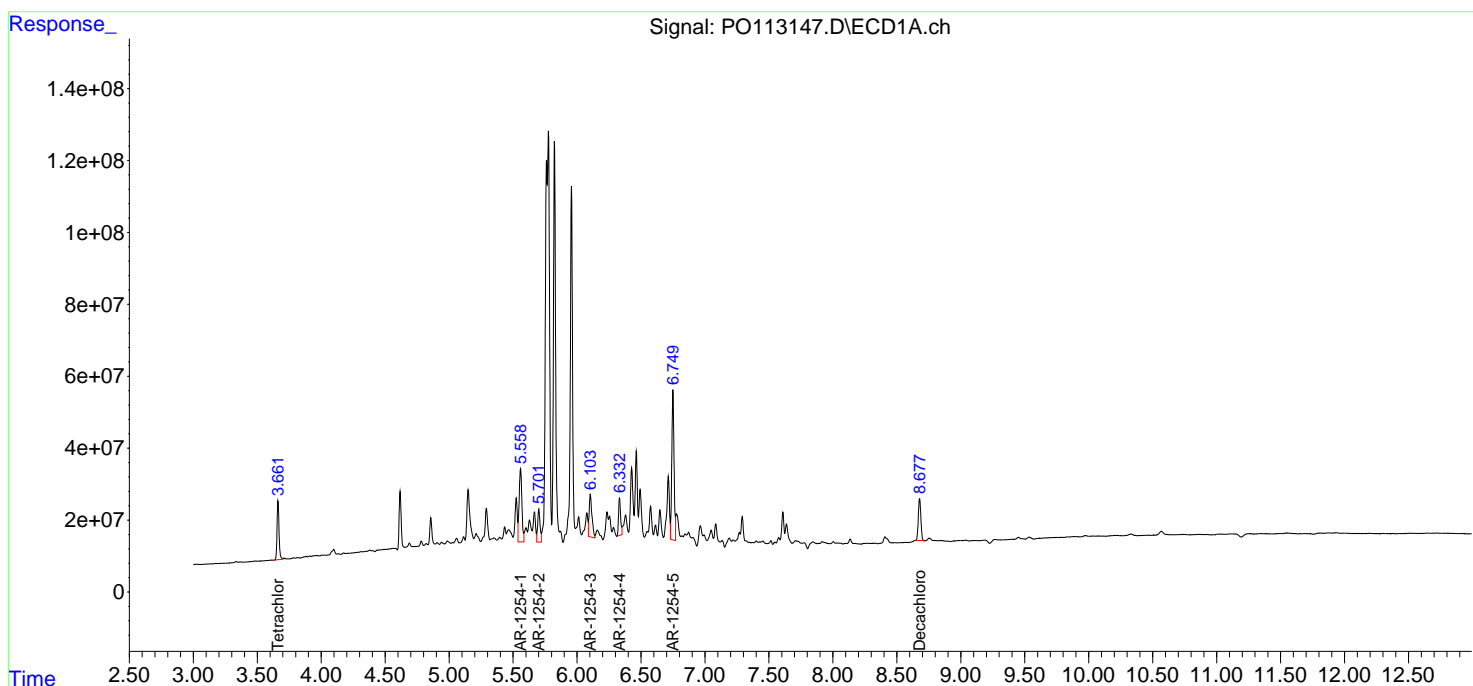
Instrument :
 ECD_0
 ClientSampleId :
 K262-18A

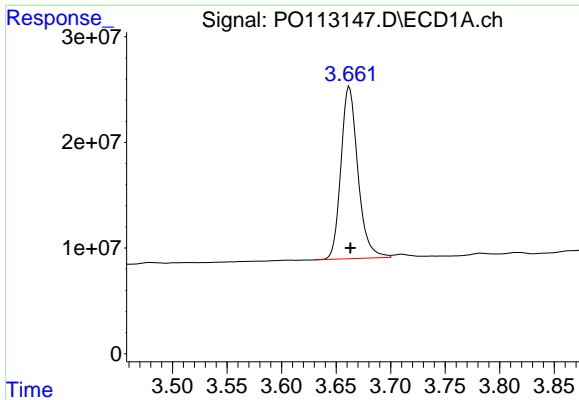
Manual Integrations
 APPROVED

Reviewed By :Yogesh Patel 08/22/2025
 Supervised By :mohammad ahmed 08/25/2025

Integration File signal 1: autoint1.e
 Integration File signal 2: autoint2.e
 Quant Time: Aug 22 00:30:19 2025
 Quant Method : Z:\pestpcbsrv\HPCHEM1\ECD_0\methods\PO081825.M
 Quant Title : GC EXTRACTABLES
 QLast Update : Tue Aug 19 06:08:32 2025
 Response via : Initial Calibration
 Integrator: ChemStation

Volume Inj. : 2 µl
 Signal #1 Phase : ZB-MR1 Signal #2 Phase: ZB-MR2
 Signal #1 Info : 30Mx0.32mmx 0.50µ Signal #2 Info : 30M x 0.32mm x 0.25µm



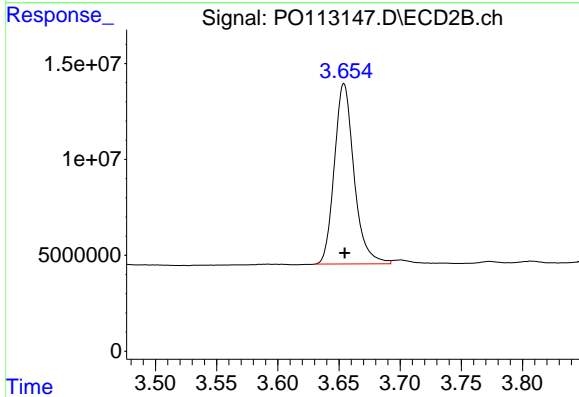


#1 Tetrachloro-m-xylene
 R.T.: 3.662 min
 Delta R.T.: 0.000 min
 Response: 176058585
 Conc: 21.51 ng/ml

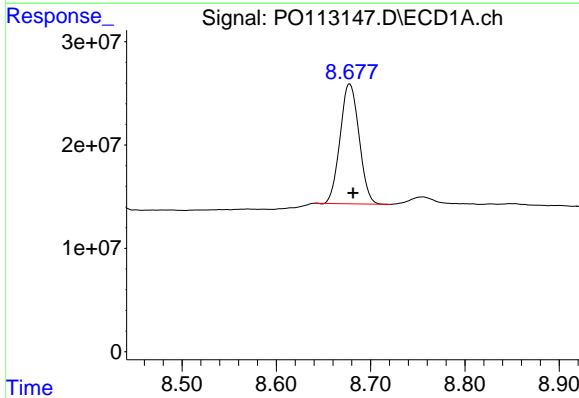
Instrument :
 ECD_O
 ClientSampleId :
 K262-18A

Manual Integrations
 APPROVED

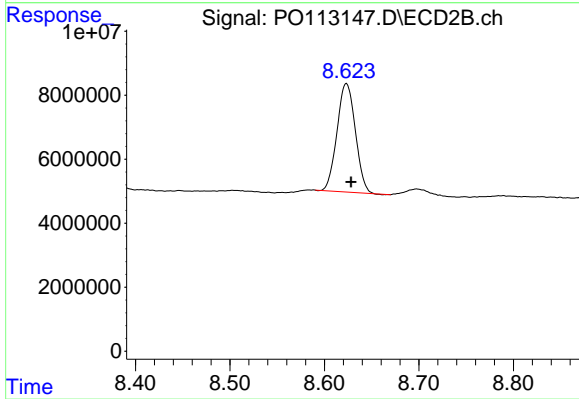
Reviewed By :Yogesh Patel 08/22/2025
 Supervised By :mohammad ahmed 08/25/2025



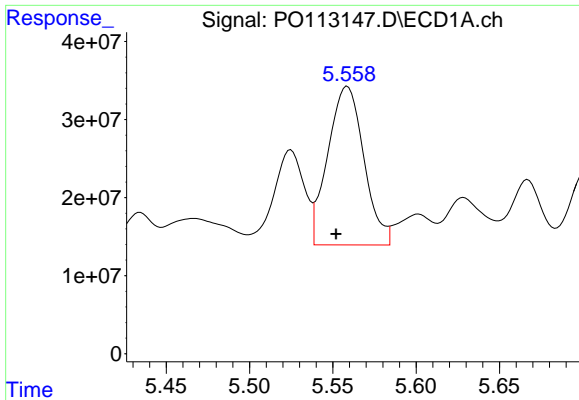
#1 Tetrachloro-m-xylene
 R.T.: 3.654 min
 Delta R.T.: 0.000 min
 Response: 105419428
 Conc: 20.83 ng/ml



#2 Decachlorobiphenyl
 R.T.: 8.678 min
 Delta R.T.: -0.004 min
 Response: 162024207
 Conc: 23.38 ng/ml



#2 Decachlorobiphenyl
 R.T.: 8.623 min
 Delta R.T.: -0.005 min
 Response: 45717892
 Conc: 24.13 ng/ml



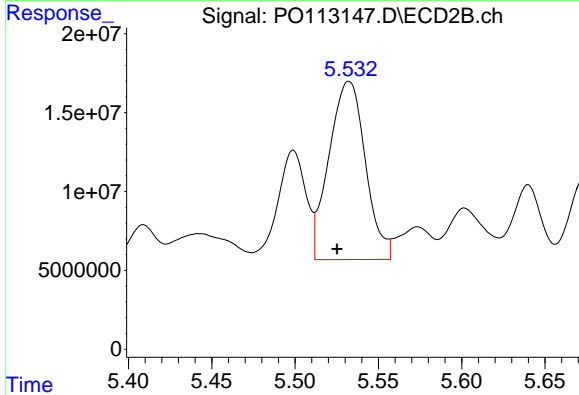
#26 AR-1254-1

R.T.: 5.559 min
 Delta R.T.: 0.007 min
 Response: 306744784
 Conc: 568.07 ng/ml

Instrument :
 ECD_O
 ClientSampleId :
 K262-18A

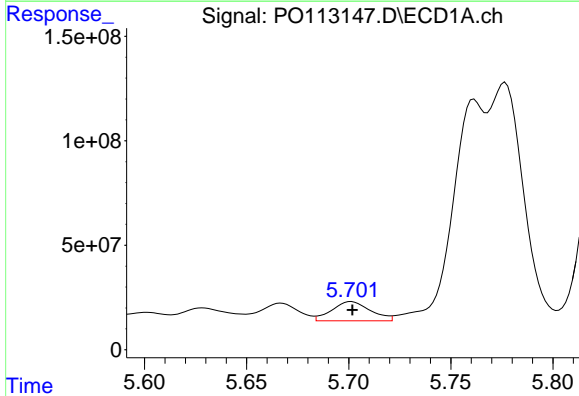
Manual Integrations
 APPROVED

Reviewed By :Yogesh Patel 08/22/2025
 Supervised By :mohammad ahmed 08/25/2025



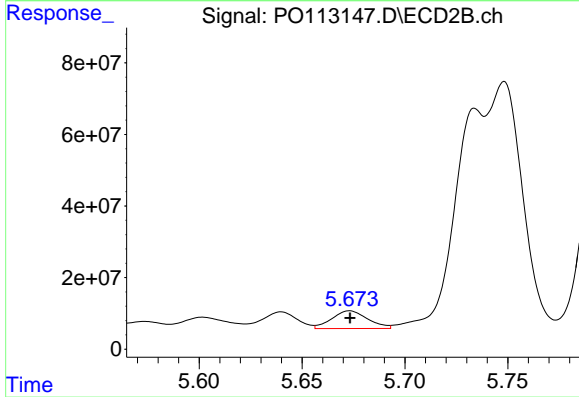
#26 AR-1254-1

R.T.: 5.532 min
 Delta R.T.: 0.007 min
 Response: 171727832
 Conc: 544.56 ng/ml



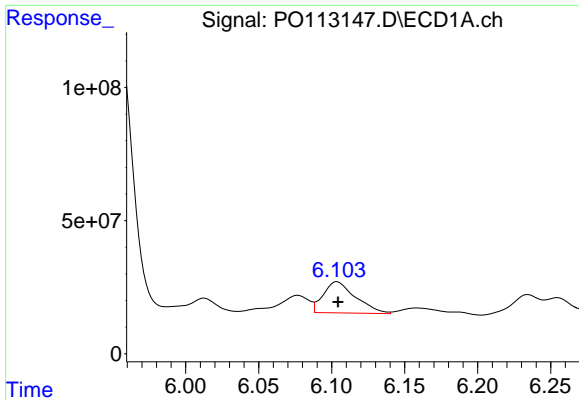
#27 AR-1254-2

R.T.: 5.701 min
 Delta R.T.: 0.000 min
 Response: 120371675
 Conc: 243.94 ng/ml



#27 AR-1254-2

R.T.: 5.673 min
 Delta R.T.: 0.000 min
 Response: 60183654
 Conc: 214.68 ng/ml



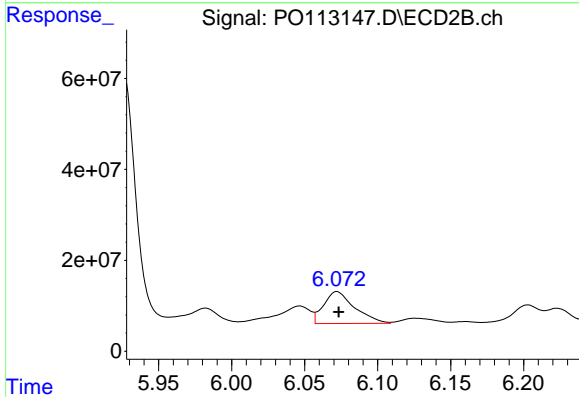
#28 AR-1254-3

R.T.: 6.104 min
 Delta R.T.: 0.000 min
 Response: 181156536
 Conc: 245.18 ng/ml

Instrument :
 ECD_O
 ClientSampleId :
 K262-18A

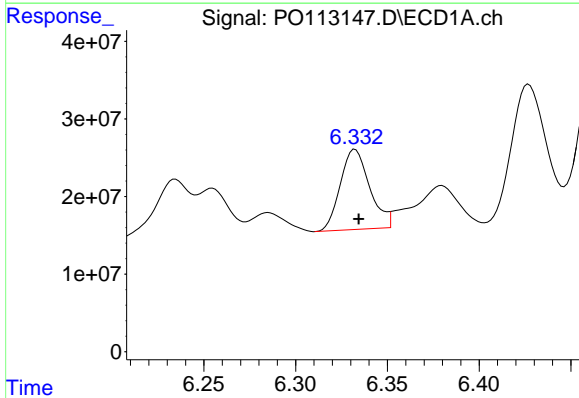
Manual Integrations
 APPROVED

Reviewed By :Yogesh Patel 08/22/2025
 Supervised By :mohammad ahmed 08/25/2025



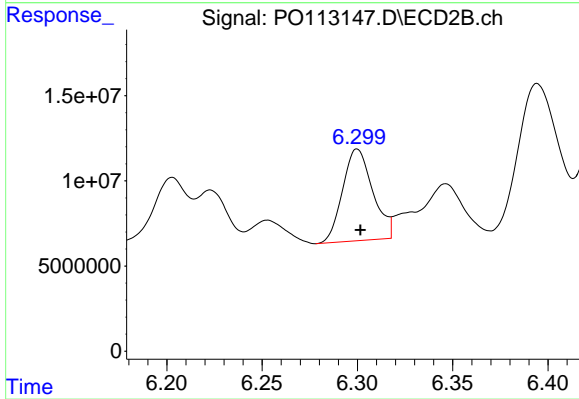
#28 AR-1254-3

R.T.: 6.072 min
 Delta R.T.: -0.001 min
 Response: 103657515
 Conc: 248.63 ng/ml



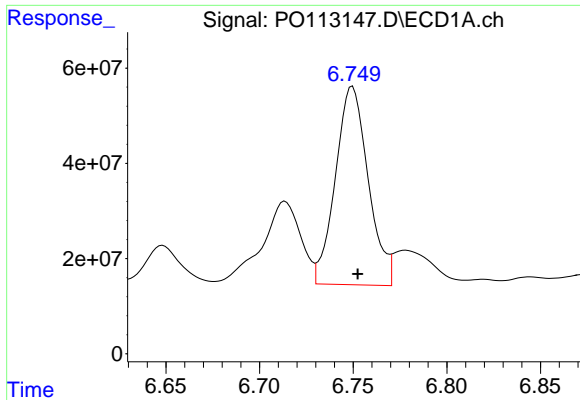
#29 AR-1254-4

R.T.: 6.332 min
 Delta R.T.: -0.002 min
 Response: 115164972
 Conc: 206.76 ng/ml



#29 AR-1254-4

R.T.: 6.300 min
 Delta R.T.: -0.002 min
 Response: 59130315
 Conc: 215.15 ng/ml



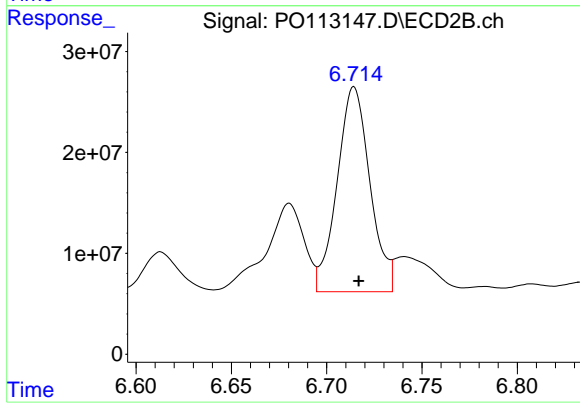
#30 AR-1254-5

R.T.: 6.750 min
 Delta R.T.: -0.003 min
 Response: 508933789
 Conc: 726.04 ng/ml

Instrument :
 ECD_O
 ClientSampleId :
 K262-18A

Manual Integrations
 APPROVED

Reviewed By :Yogesh Patel 08/22/2025
 Supervised By :mohammad ahmed 08/25/2025



#30 AR-1254-5

R.T.: 6.714 min
 Delta R.T.: -0.003 min
 Response: 243062719
 Conc: 679.91 ng/ml m