

Data Path : Z:\pestpcbsrv\HPCHEM1\ECD_0\Data\P0082125\
 Data File : P0113148.D
 Signal(s) : Signal #1: ECD1A.ch Signal #2: ECD2B.ch
 Acq On : 21 Aug 2025 22:03
 Operator : YP/AJ
 Sample : AR1660CCC500
 Misc :
 ALS Vial : 3 Sample Multiplier: 1

Instrument :
 ECD_0
ClientSampleId :
 AR1660CCC500

Manual Integrations
APPROVED

Reviewed By :Yogesh Patel 08/22/2025
 Supervised By :mohammad ahmed 08/25/2025

Integration File signal 1: autoint1.e
 Integration File signal 2: autoint2.e
 Quant Time: Aug 22 00:30:33 2025
 Quant Method : Z:\pestpcbsrv\HPCHEM1\ECD_0\methods\P0081825.M
 Quant Title : GC EXTRACTABLES
 QLast Update : Tue Aug 19 06:08:32 2025
 Response via : Initial Calibration
 Integrator: ChemStation

Volume Inj. : 2 µl
 Signal #1 Phase : ZB-MR1 Signal #2 Phase: ZB-MR2
 Signal #1 Info : 30Mx0.32mmx 0.50µ Signal #2 Info : 30M x 0.32mm x 0.25µm

Compound	RT#1	RT#2	Resp#1	Resp#2	ng/ml	ng/ml

System Monitoring Compounds						
1) SA Tetrachlo...	3.663	3.654	440.4E6	261.0E6	53.795	51.577
2) SA Decachlor...	8.681	8.627	349.4E6	97181520	50.403	51.287
Target Compounds						
3) L1 AR-1016-1	4.747	4.728	145.1E6	87771534	543.335	514.567
4) L1 AR-1016-2	4.765	4.746	218.6E6	131.5E6	544.495	510.520
5) L1 AR-1016-3	4.823	4.921	141.4E6	69902183	554.327	500.680
6) L1 AR-1016-4	4.942	4.964	108.4E6	56128154	496.864	480.965
7) L1 AR-1016-5	5.197	5.175	120.8E6	80051499	544.972m	561.647
31) L7 AR-1260-1	6.235	6.203	230.5E6	125.6E6	516.852	492.353
32) L7 AR-1260-2	6.424	6.391	369.2E6	171.2E6	537.688	495.234
33) L7 AR-1260-3	6.790	6.543	324.8E6	136.2E6	525.937	457.931
34) L7 AR-1260-4	7.049	7.011	232.8E6	96998046	519.715	468.025
35) L7 AR-1260-5	7.292	7.254	622.0E6	217.8E6	513.750	464.898

(f)=RT Delta > 1/2 Window (#)=Amounts differ by > 25% (m)=manual int.

Data Path : Z:\pestpcbsrv\HPCHEM1\ECD_O\Data\P0082125\
 Data File : P0113148.D
 Signal(s) : Signal #1: ECD1A.ch Signal #2: ECD2B.ch
 Acq On : 21 Aug 2025 22:03
 Operator : YP/AJ
 Sample : AR1660CCC500
 Misc :
 ALS Vial : 3 Sample Multiplier: 1

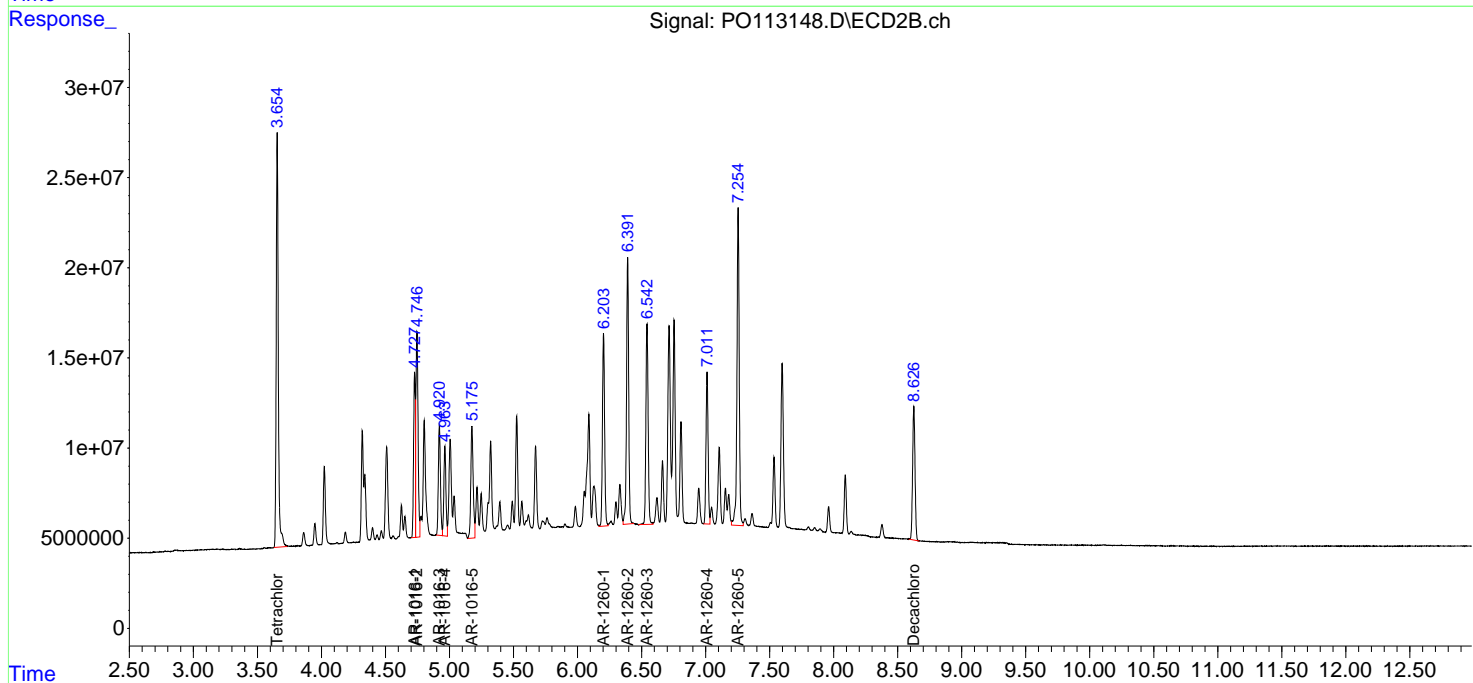
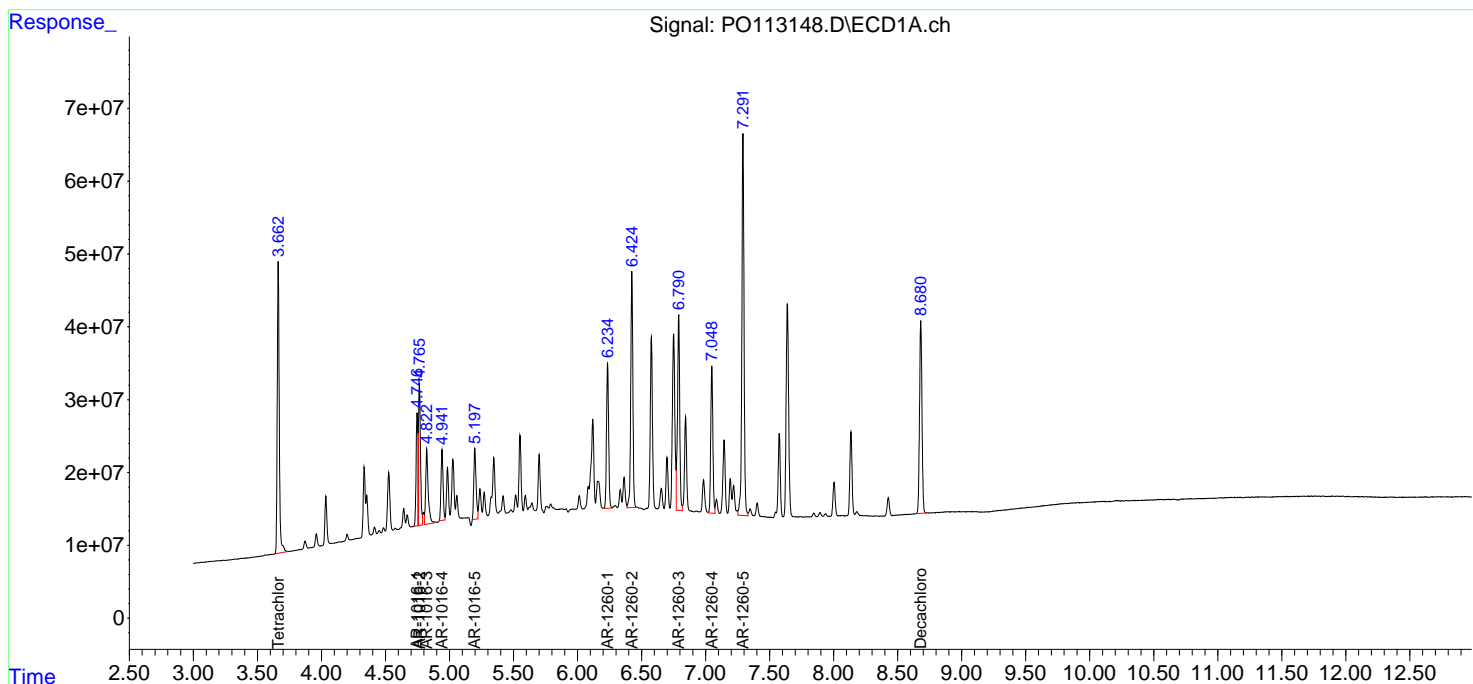
Instrument :
 ECD_O
 ClientSampleId :
 AR1660CCC500

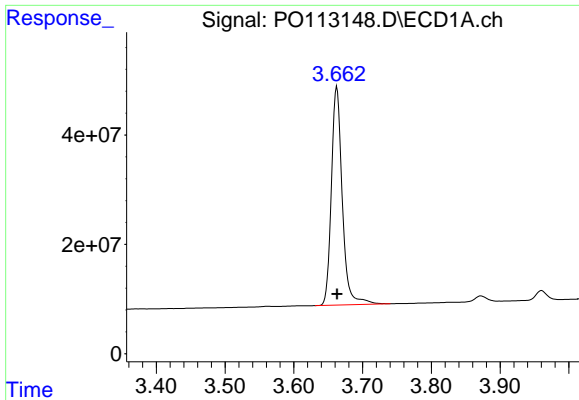
Manual Integrations
APPROVED

Reviewed By :Yogesh Patel 08/22/2025
 Supervised By :mohammad ahmed 08/25/2025

Integration File signal 1: autoint1.e
 Integration File signal 2: autoint2.e
 Quant Time: Aug 22 00:30:33 2025
 Quant Method : Z:\pestpcbsrv\HPCHEM1\ECD_O\methods\P0081825.M
 Quant Title : GC EXTRACTABLES
 QLast Update : Tue Aug 19 06:08:32 2025
 Response via : Initial Calibration
 Integrator: ChemStation

Volume Inj. : 2 µl
 Signal #1 Phase : ZB-MR1 Signal #2 Phase: ZB-MR2
 Signal #1 Info : 30Mx0.32mmx 0.50µ Signal #2 Info : 30M x 0.32mm x 0.25µm

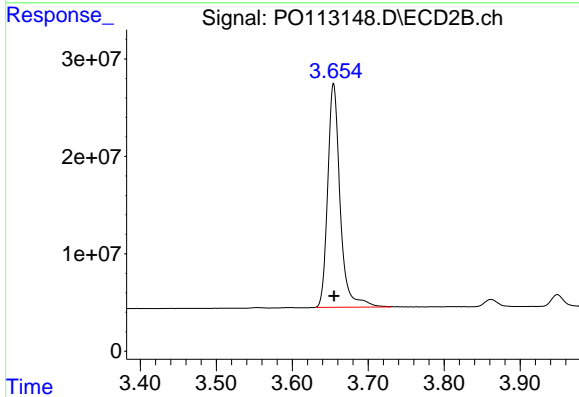




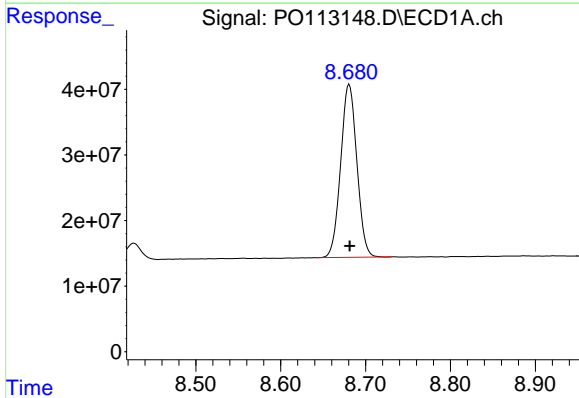
#1 Tetrachloro-m-xylene
 R.T.: 3.663 min
 Delta R.T.: 0.000 min
 Response: 440400635
 Conc: 53.80 ng/ml

Instrument :
 ECD_O
 ClientSampleId :
 AR1660CCC500

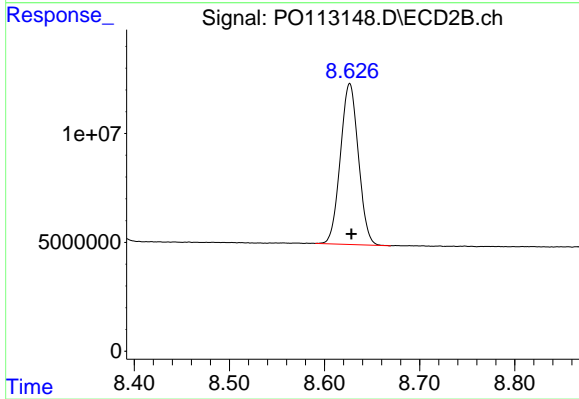
Manual Integrations
APPROVED
 Reviewed By :Yogesh Patel 08/22/2025
 Supervised By :mohammad ahmed 08/25/2025



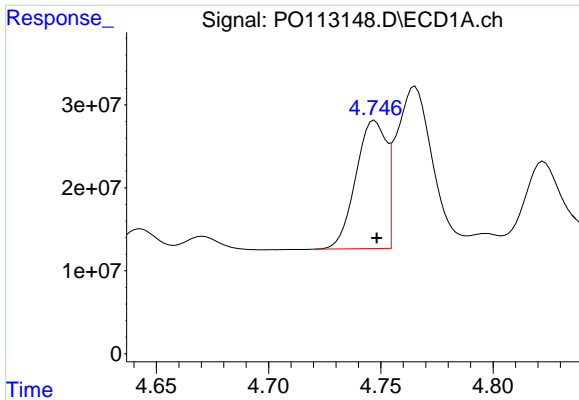
#1 Tetrachloro-m-xylene
 R.T.: 3.654 min
 Delta R.T.: 0.000 min
 Response: 261015194
 Conc: 51.58 ng/ml



#2 Decachlorobiphenyl
 R.T.: 8.681 min
 Delta R.T.: 0.000 min
 Response: 349361861
 Conc: 50.40 ng/ml



#2 Decachlorobiphenyl
 R.T.: 8.627 min
 Delta R.T.: -0.002 min
 Response: 97181520
 Conc: 51.29 ng/ml



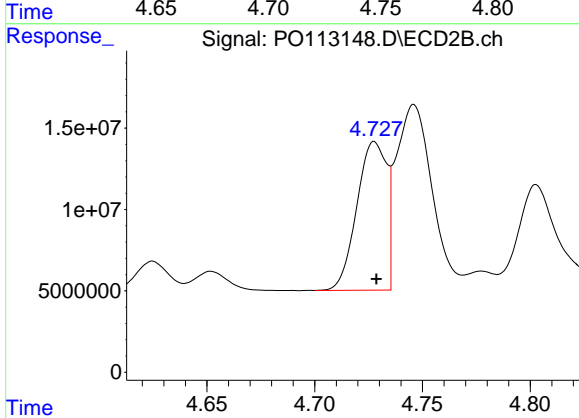
#3 AR-1016-1

R.T.: 4.747 min
 Delta R.T.: -0.001 min
 Response: 145062114
 Conc: 543.33 ng/ml

Instrument :
 ECD_O
 ClientSampleId :
 AR1660CCC500

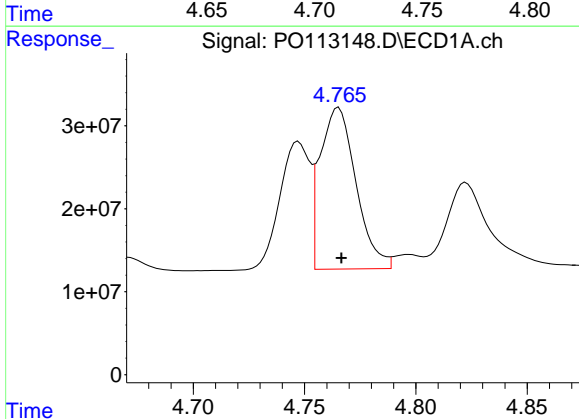
Manual Integrations
 APPROVED

Reviewed By :Yogesh Patel 08/22/2025
 Supervised By :mohammad ahmed 08/25/2025



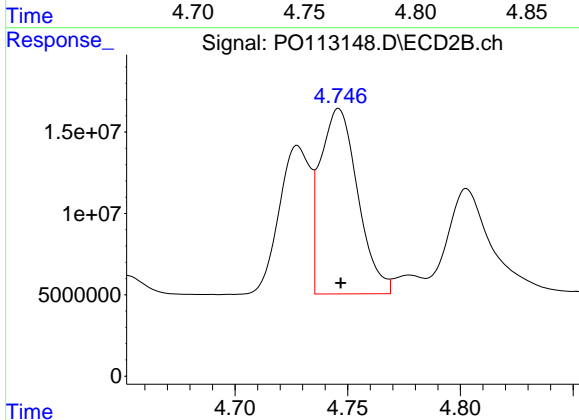
#3 AR-1016-1

R.T.: 4.728 min
 Delta R.T.: -0.001 min
 Response: 87771534
 Conc: 514.57 ng/ml



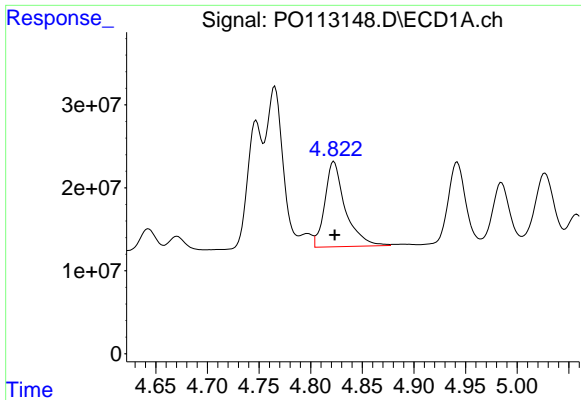
#4 AR-1016-2

R.T.: 4.765 min
 Delta R.T.: -0.001 min
 Response: 218577300
 Conc: 544.49 ng/ml



#4 AR-1016-2

R.T.: 4.746 min
 Delta R.T.: 0.000 min
 Response: 131538470
 Conc: 510.52 ng/ml



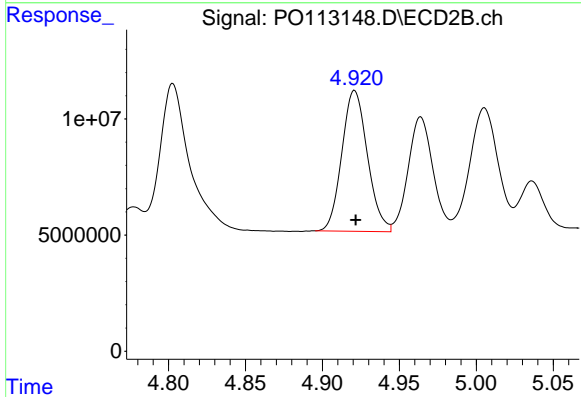
#5 AR-1016-3

R.T.: 4.823 min
 Delta R.T.: 0.000 min
 Response: 141365763
 Conc: 554.33 ng/ml

Instrument :
 ECD_O
 ClientSampleId :
 AR1660CCC500

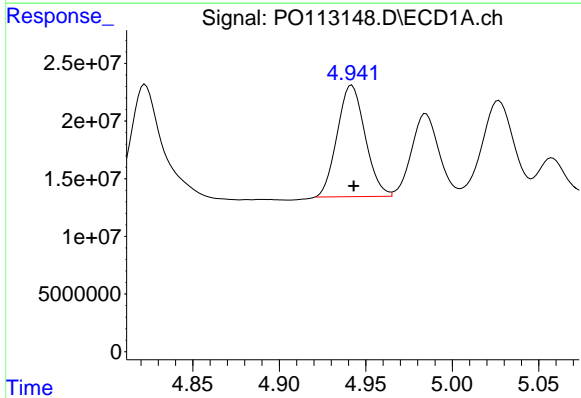
Manual Integrations
 APPROVED

Reviewed By :Yogesh Patel 08/22/2025
 Supervised By :mohammad ahmed 08/25/2025



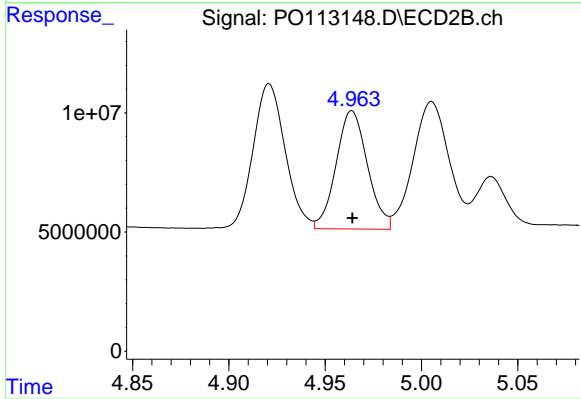
#5 AR-1016-3

R.T.: 4.921 min
 Delta R.T.: 0.000 min
 Response: 69902183
 Conc: 500.68 ng/ml



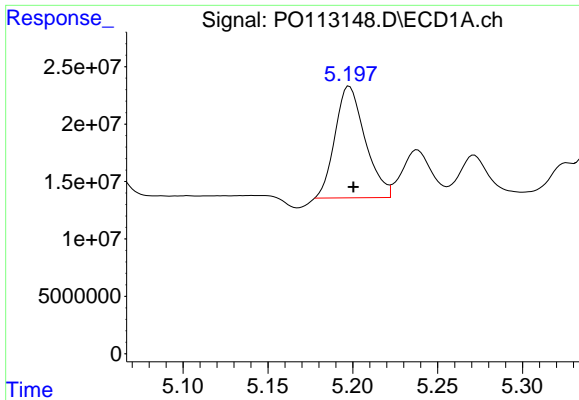
#6 AR-1016-4

R.T.: 4.942 min
 Delta R.T.: -0.001 min
 Response: 108350220
 Conc: 496.86 ng/ml



#6 AR-1016-4

R.T.: 4.964 min
 Delta R.T.: 0.000 min
 Response: 56128154
 Conc: 480.97 ng/ml



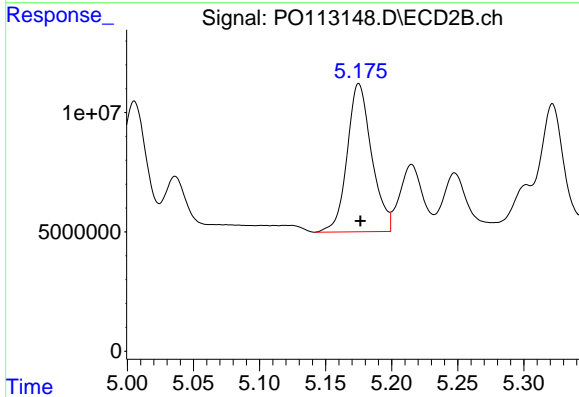
#7 AR-1016-5

R.T.: 5.197 min
 Delta R.T.: -0.003 min
 Response: 120781015
 Conc: 544.97 ng/ml

Instrument :
 ECD_O
 ClientSampleId :
 AR1660CCC500

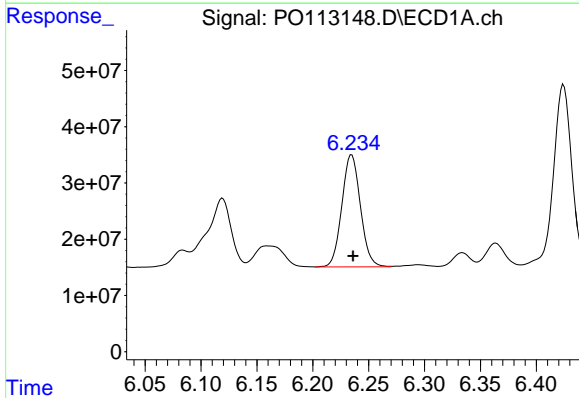
Manual Integrations
 APPROVED

Reviewed By :Yogesh Patel 08/22/2025
 Supervised By :mohammad ahmed 08/25/2025



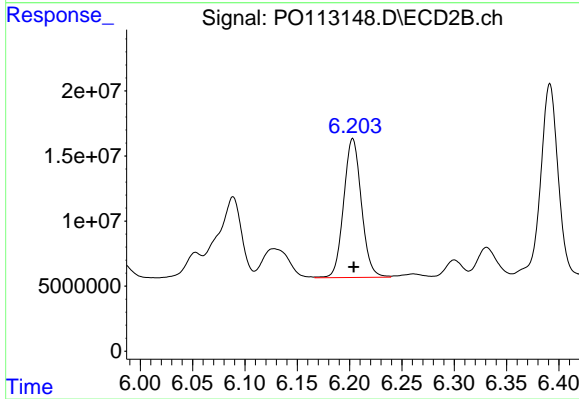
#7 AR-1016-5

R.T.: 5.175 min
 Delta R.T.: -0.001 min
 Response: 80051499
 Conc: 561.65 ng/ml



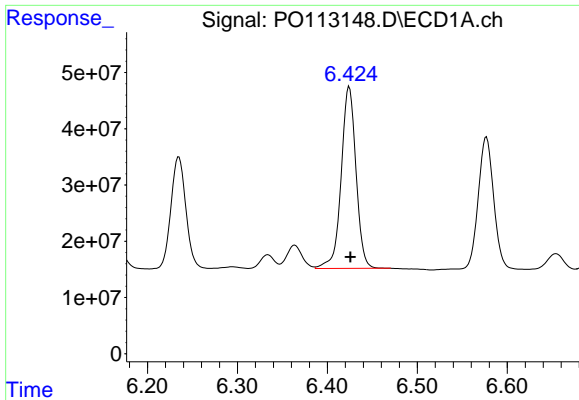
#31 AR-1260-1

R.T.: 6.235 min
 Delta R.T.: -0.001 min
 Response: 230506113
 Conc: 516.85 ng/ml



#31 AR-1260-1

R.T.: 6.203 min
 Delta R.T.: 0.000 min
 Response: 125584009
 Conc: 492.35 ng/ml



#32 AR-1260-2

R.T.: 6.424 min
 Delta R.T.: -0.001 min
 Response: 369241942
 Conc: 537.69 ng/ml

Instrument :

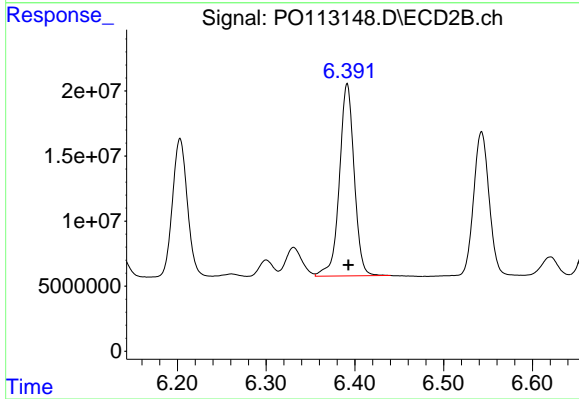
ECD_O

ClientSampleId :

AR1660CCC500

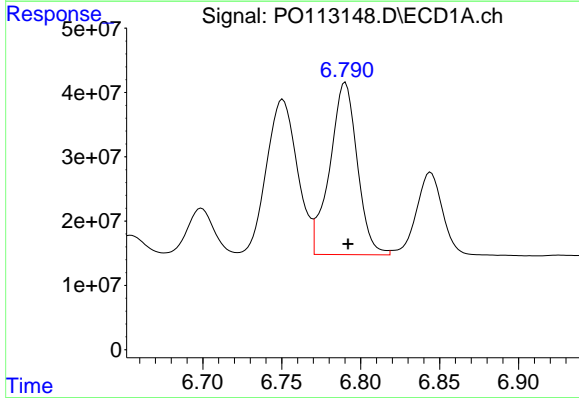
Manual Integrations
 APPROVED

Reviewed By :Yogesh Patel 08/22/2025
 Supervised By :mohammad ahmed 08/25/2025



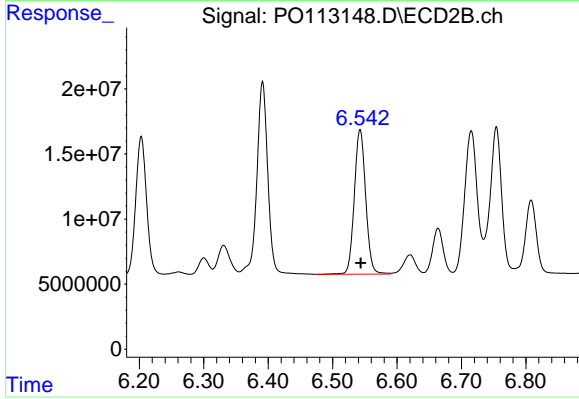
#32 AR-1260-2

R.T.: 6.391 min
 Delta R.T.: -0.001 min
 Response: 171208184
 Conc: 495.23 ng/ml



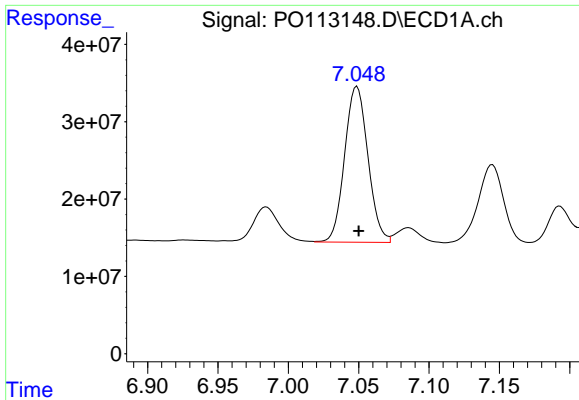
#33 AR-1260-3

R.T.: 6.790 min
 Delta R.T.: -0.002 min
 Response: 324752107
 Conc: 525.94 ng/ml



#33 AR-1260-3

R.T.: 6.543 min
 Delta R.T.: 0.000 min
 Response: 136204179
 Conc: 457.93 ng/ml



#34 AR-1260-4

R.T.: 7.049 min
 Delta R.T.: -0.001 min
 Response: 232767072
 Conc: 519.72 ng/ml

Instrument :

ECD_O

ClientSampleId :

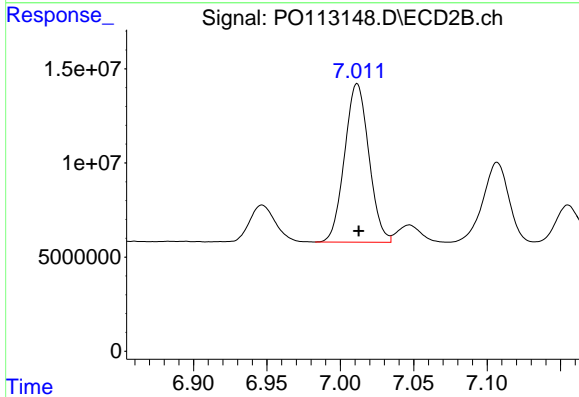
AR1660CCC500

Manual Integrations

APPROVED

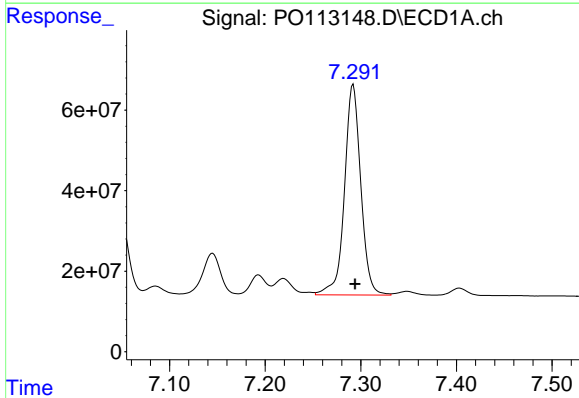
Reviewed By :Yogesh Patel 08/22/2025

Supervised By :mohammad ahmed 08/25/2025



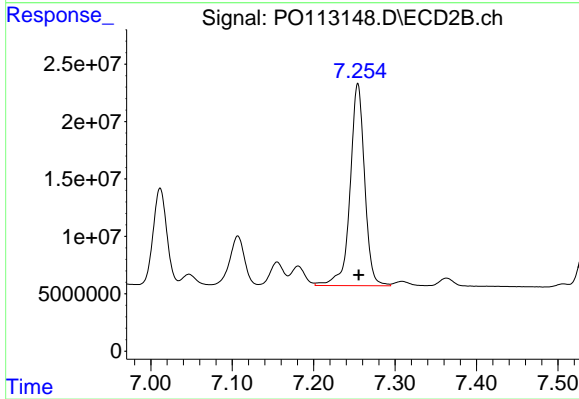
#34 AR-1260-4

R.T.: 7.011 min
 Delta R.T.: -0.001 min
 Response: 96998046
 Conc: 468.03 ng/ml



#35 AR-1260-5

R.T.: 7.292 min
 Delta R.T.: -0.002 min
 Response: 621988950
 Conc: 513.75 ng/ml



#35 AR-1260-5

R.T.: 7.254 min
 Delta R.T.: -0.001 min
 Response: 217771730
 Conc: 464.90 ng/ml