

Data Path : Z:\pestpcbsrv\HPCHEM1\ECD_0\Data\P0082125\
 Data File : PO113150.D
 Signal(s) : Signal #1: ECD1A.ch Signal #2: ECD2B.ch
 Acq On : 21 Aug 2025 23:17
 Operator : YP/AJ
 Sample : AR1248CCC500
 Misc :
 ALS Vial : 5 Sample Multiplier: 1

Instrument :
 ECD_0
ClientSampleId :
 AR1248CCC500

Integration File signal 1: autoint1.e
 Integration File signal 2: autoint2.e
 Quant Time: Aug 22 00:31:04 2025
 Quant Method : Z:\pestpcbsrv\HPCHEM1\ECD_0\methods\P0081825.M
 Quant Title : GC EXTRACTABLES
 QLast Update : Tue Aug 19 06:08:32 2025
 Response via : Initial Calibration
 Integrator: ChemStation

Volume Inj. : 2 µl
 Signal #1 Phase : ZB-MR1 Signal #2 Phase: ZB-MR2
 Signal #1 Info : 30Mx0.32mmx 0.50µ Signal #2 Info : 30M x 0.32mm x 0.25µm

Compound	RT#1	RT#2	Resp#1	Resp#2	ng/ml	ng/ml

System Monitoring Compounds						
1) SA Tetrachlo...	3.663	3.655	452.2E6	266.7E6	55.232	52.710
2) SA Decachlor...	8.681	8.627	365.3E6	99443854	52.696	52.481
Target Compounds						
21) L5 AR-1248-1	4.748	4.728	96553654	59349854	553.423	532.229
22) L5 AR-1248-2	4.985	4.964	126.5E6	82578747	523.148	513.872
23) L5 AR-1248-3	5.199	5.005	185.9E6	89161841	583.015	525.530
24) L5 AR-1248-4	5.551	5.175	270.2E6	107.6E6	540.757	540.318
25) L5 AR-1248-5	5.593	5.565	183.4E6	107.2E6	536.941	504.761

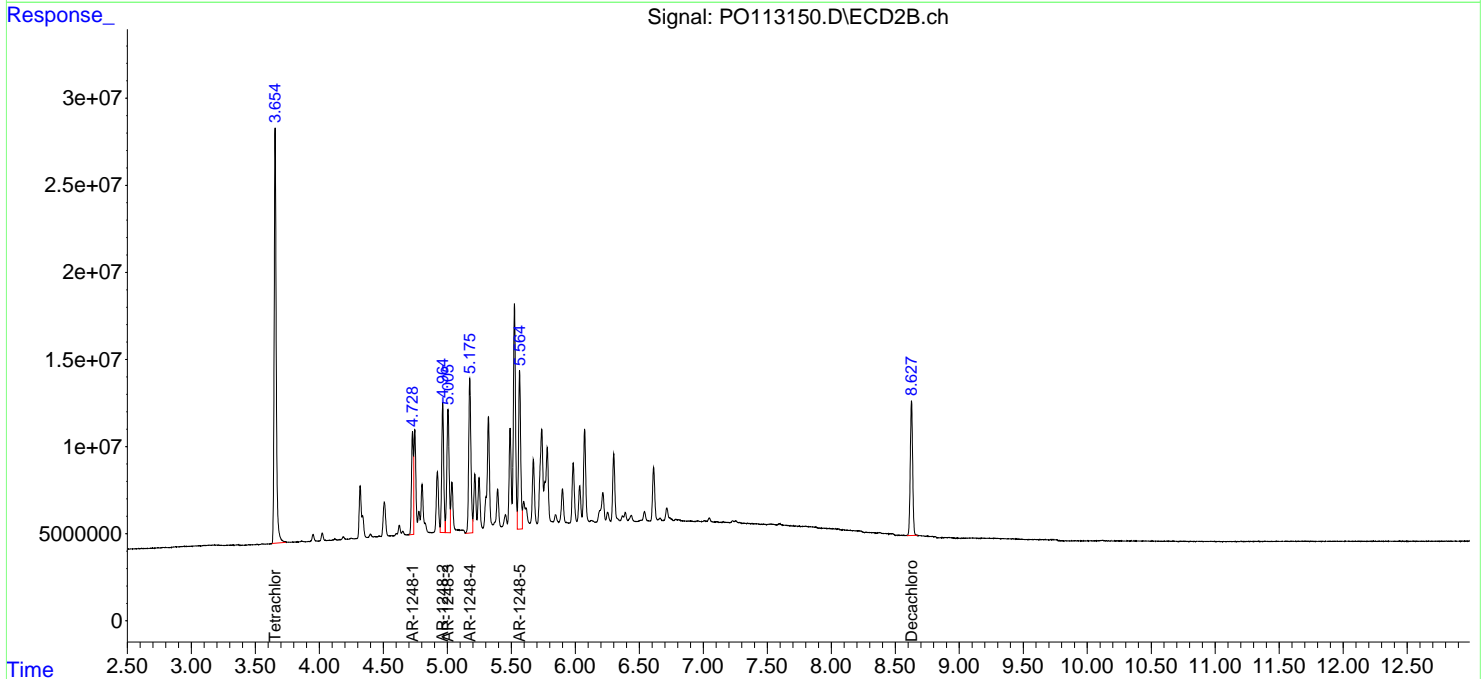
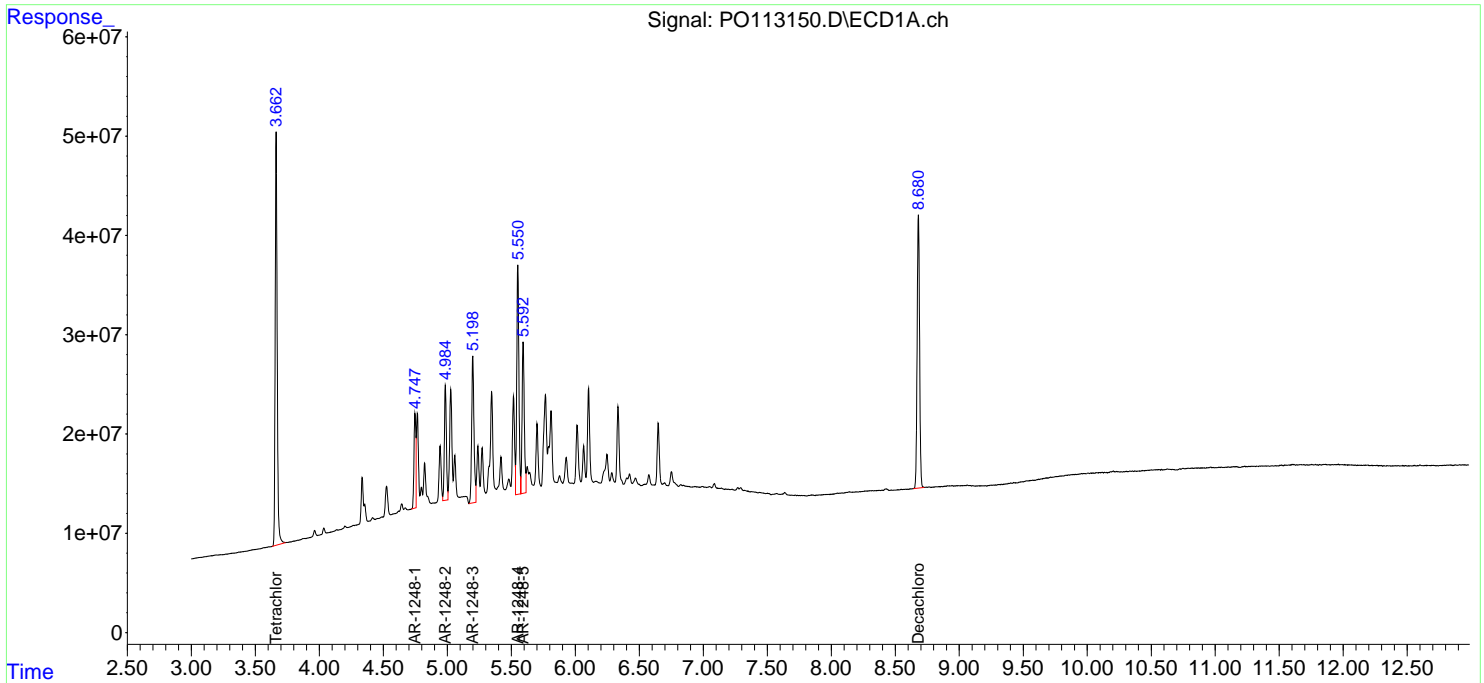
(f)=RT Delta > 1/2 Window (#)=Amounts differ by > 25% (m)=manual int.

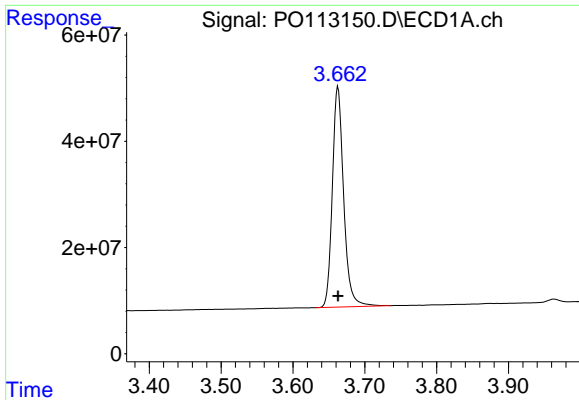
Data Path : Z:\pestpcbsrv\HPCHEM1\ECD_O\Data\P0082125\
 Data File : P0113150.D
 Signal(s) : Signal #1: ECD1A.ch Signal #2: ECD2B.ch
 Acq On : 21 Aug 2025 23:17
 Operator : YP/AJ
 Sample : AR1248CCC500
 Misc :
 ALS Vial : 5 Sample Multiplier: 1

Instrument :
 ECD_O
 ClientSampleId :
 AR1248CCC500

Integration File signal 1: autoint1.e
 Integration File signal 2: autoint2.e
 Quant Time: Aug 22 00:31:04 2025
 Quant Method : Z:\pestpcbsrv\HPCHEM1\ECD_O\methods\P0081825.M
 Quant Title : GC EXTRACTABLES
 QLast Update : Tue Aug 19 06:08:32 2025
 Response via : Initial Calibration
 Integrator: ChemStation

Volume Inj. : 2 µl
 Signal #1 Phase : ZB-MR1 Signal #2 Phase: ZB-MR2
 Signal #1 Info : 30Mx0.32mmx 0.50µ Signal #2 Info : 30M x 0.32mm x 0.25µm

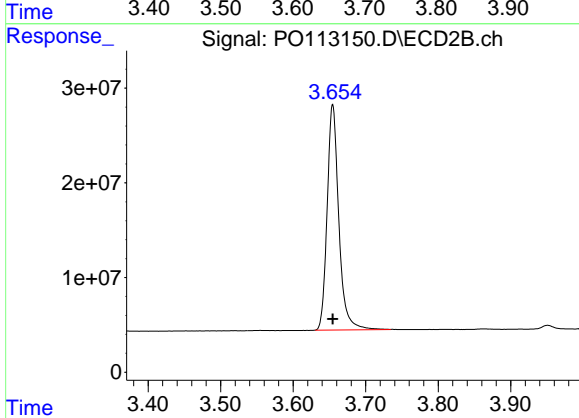




#1 Tetrachloro-m-xylene

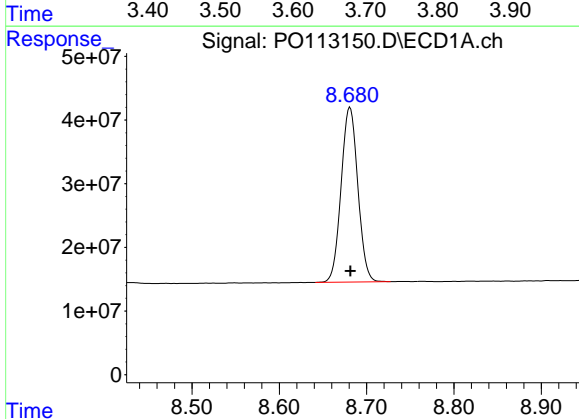
R.T.: 3.663 min
 Delta R.T.: 0.000 min
 Response: 452164908
 Conc: 55.23 ng/ml

Instrument :
 ECD_O
 ClientSampleId :
 AR1248CCC500



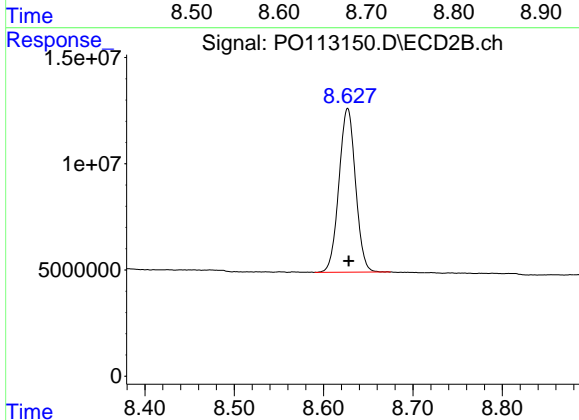
#1 Tetrachloro-m-xylene

R.T.: 3.655 min
 Delta R.T.: 0.000 min
 Response: 266749257
 Conc: 52.71 ng/ml



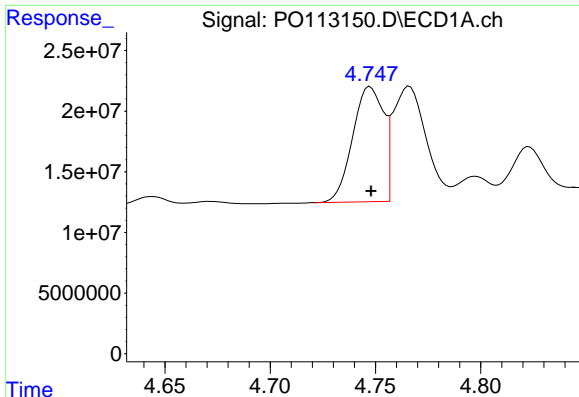
#2 Decachlorobiphenyl

R.T.: 8.681 min
 Delta R.T.: 0.000 min
 Response: 365260929
 Conc: 52.70 ng/ml



#2 Decachlorobiphenyl

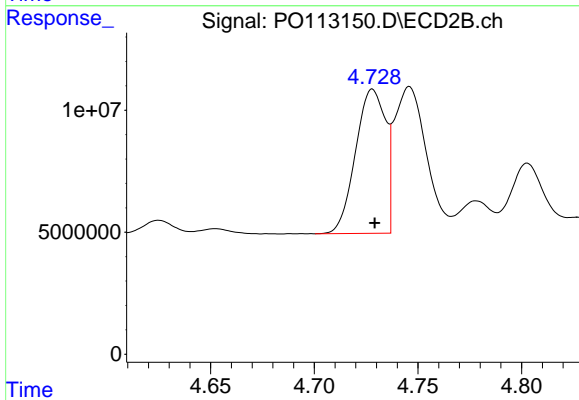
R.T.: 8.627 min
 Delta R.T.: -0.001 min
 Response: 99443854
 Conc: 52.48 ng/ml



#21 AR-1248-1

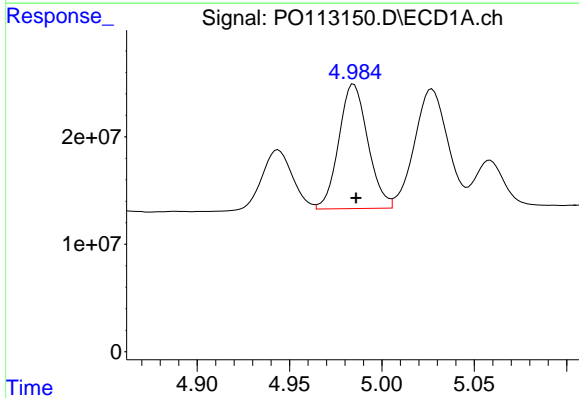
R.T.: 4.748 min
 Delta R.T.: 0.000 min
 Response: 96553654
 Conc: 553.42 ng/ml

Instrument :
 ECD_O
 ClientSampleId :
 AR1248CCC500



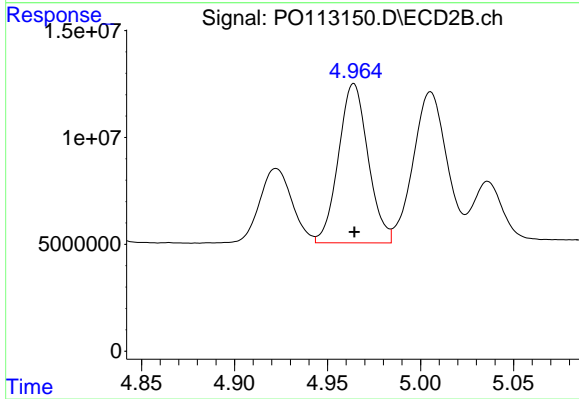
#21 AR-1248-1

R.T.: 4.728 min
 Delta R.T.: 0.000 min
 Response: 59349854
 Conc: 532.23 ng/ml



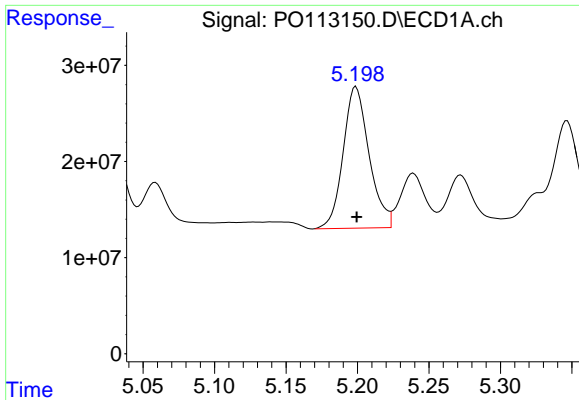
#22 AR-1248-2

R.T.: 4.985 min
 Delta R.T.: -0.001 min
 Response: 126531468
 Conc: 523.15 ng/ml



#22 AR-1248-2

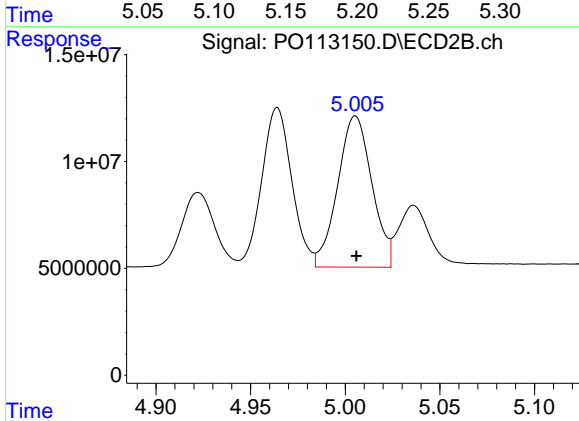
R.T.: 4.964 min
 Delta R.T.: 0.000 min
 Response: 82578747
 Conc: 513.87 ng/ml



#23 AR-1248-3

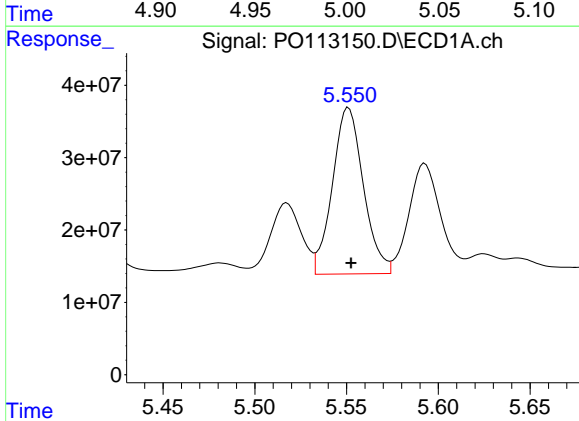
R.T.: 5.199 min
 Delta R.T.: 0.000 min
 Response: 185902355
 Conc: 583.01 ng/ml

Instrument :
 ECD_O
 ClientSampleId :
 AR1248CCC500



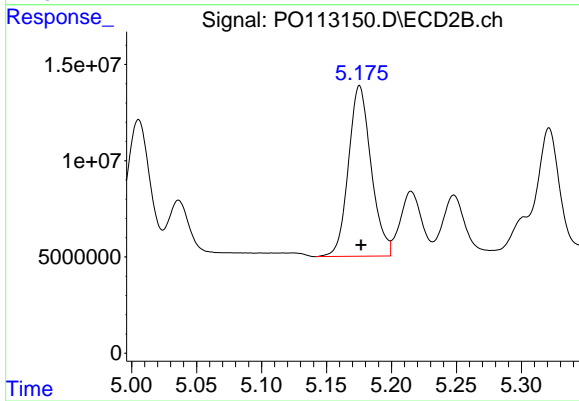
#23 AR-1248-3

R.T.: 5.005 min
 Delta R.T.: 0.000 min
 Response: 89161841
 Conc: 525.53 ng/ml



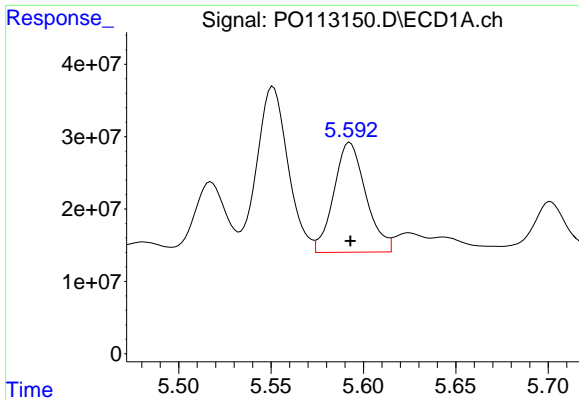
#24 AR-1248-4

R.T.: 5.551 min
 Delta R.T.: -0.001 min
 Response: 270164515
 Conc: 540.76 ng/ml



#24 AR-1248-4

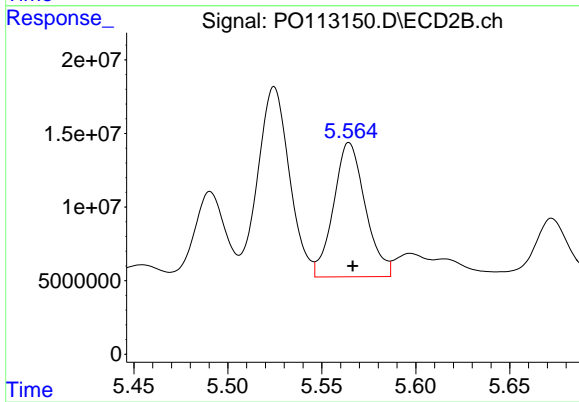
R.T.: 5.175 min
 Delta R.T.: -0.001 min
 Response: 107642174
 Conc: 540.32 ng/ml



#25 AR-1248-5

R.T.: 5.593 min
 Delta R.T.: 0.000 min
 Response: 183360851
 Conc: 536.94 ng/ml

Instrument :
 ECD_O
 ClientSampleId :
 AR1248CCC500



#25 AR-1248-5

R.T.: 5.565 min
 Delta R.T.: -0.002 min
 Response: 107158956
 Conc: 504.76 ng/ml