

Data Path : Z:\pestpcbsrv\HPCHEM1\ECD\_0\Data\P0082125\  
 Data File : P0113153.D  
 Signal(s) : Signal #1: ECD1A.ch Signal #2: ECD2B.ch  
 Acq On : 22 Aug 2025 00:12  
 Operator : YP/AJ  
 Sample : Q2914-01RE  
 Misc :  
 ALS Vial : 12 Sample Multiplier: 1

Instrument :  
 ECD\_0  
 ClientSampleId :  
 K262-9ARE

Integration File signal 1: autoint1.e  
 Integration File signal 2: autoint2.e  
 Quant Time: Aug 22 02:43:56 2025  
 Quant Method : Z:\pestpcbsrv\HPCHEM1\ECD\_0\methods\P0081825.M  
 Quant Title : GC EXTRACTABLES  
 QLast Update : Tue Aug 19 06:08:32 2025  
 Response via : Initial Calibration  
 Integrator: ChemStation

Volume Inj. : 2 µl  
 Signal #1 Phase : ZB-MR1 Signal #2 Phase: ZB-MR2  
 Signal #1 Info : 30Mx0.32mmx 0.50µ Signal #2 Info : 30M x 0.32mm x 0.25µm

Compound	RT#1	RT#2	Resp#1	Resp#2	ng/ml	ng/ml
-----						
System Monitoring Compounds						
1) SA Tetrachlo...	3.663	3.654	197.2E6	116.1E6	24.094	22.949
2) SA Decachlor...	8.677	8.622	340.7E6	90802665	49.155	47.921

Target Compounds

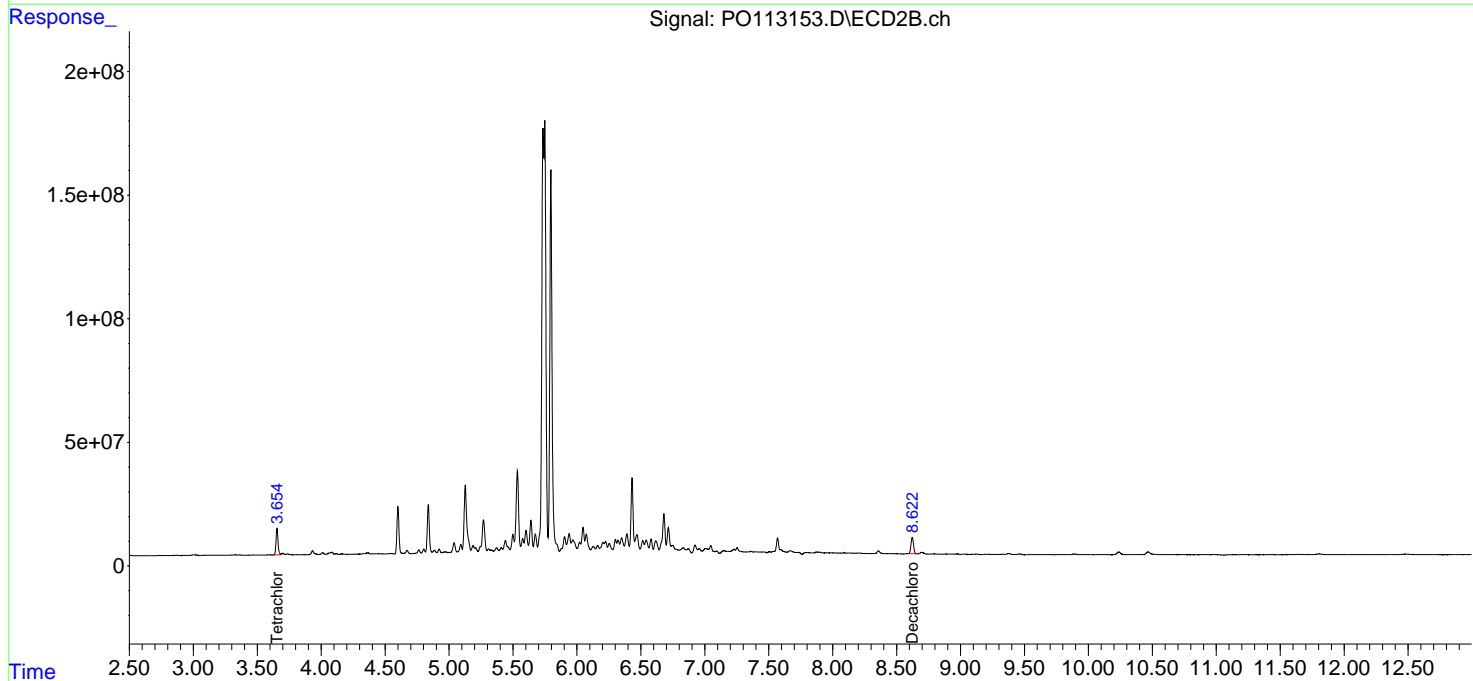
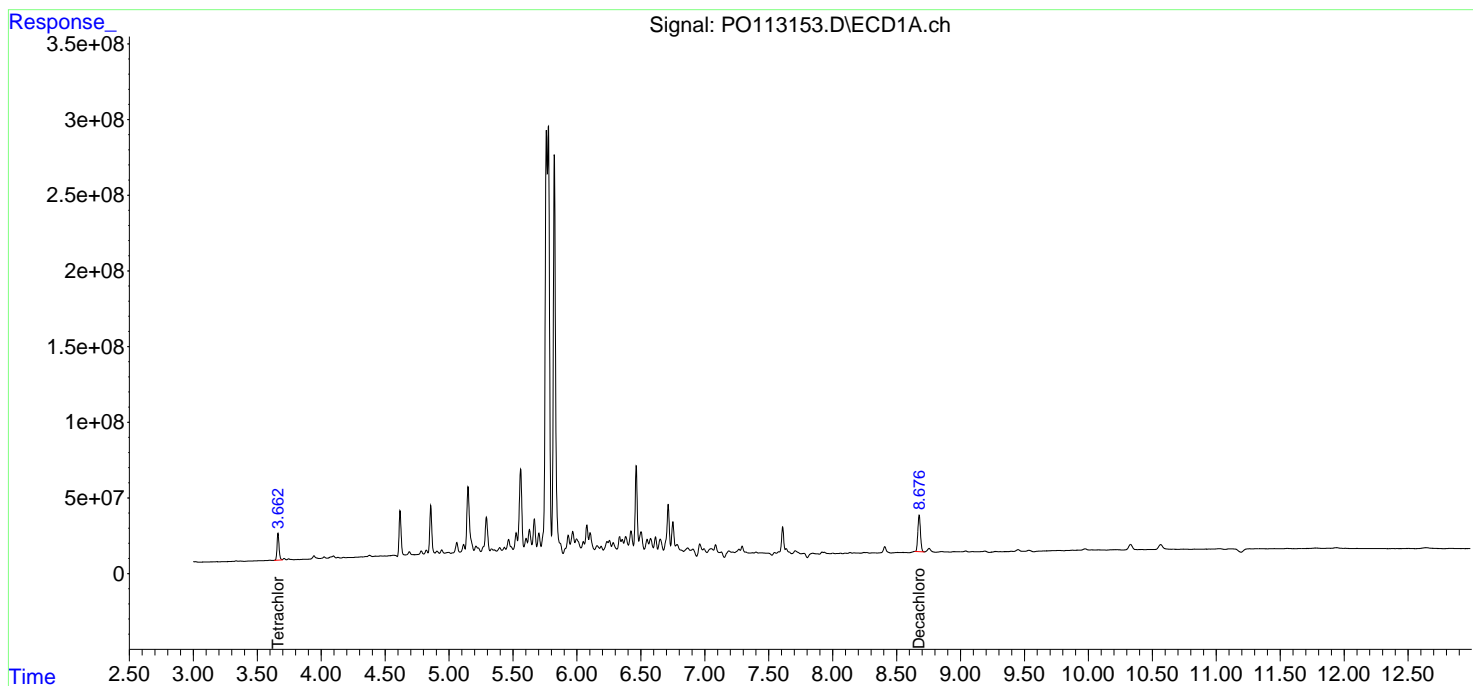
-----  
 (f)=RT Delta > 1/2 Window (#)=Amounts differ by > 25% (m)=manual int.

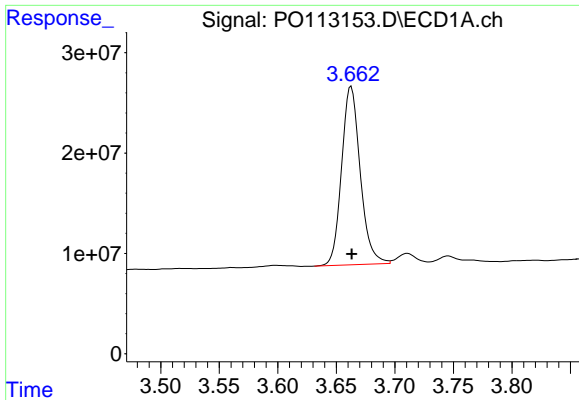
Data Path : Z:\pestpcbsrv\HPCHEM1\ECD\_0\Data\P0082125\  
 Data File : P0113153.D  
 Signal(s) : Signal #1: ECD1A.ch Signal #2: ECD2B.ch  
 Acq On : 22 Aug 2025 00:12  
 Operator : YP/AJ  
 Sample : Q2914-01RE  
 Misc :  
 ALS Vial : 12 Sample Multiplier: 1

Instrument :  
 ECD\_0  
 ClientSampleId :  
 K262-9ARE

Integration File signal 1: autoint1.e  
 Integration File signal 2: autoint2.e  
 Quant Time: Aug 22 02:43:56 2025  
 Quant Method : Z:\pestpcbsrv\HPCHEM1\ECD\_0\methods\P0081825.M  
 Quant Title : GC EXTRACTABLES  
 QLast Update : Tue Aug 19 06:08:32 2025  
 Response via : Initial Calibration  
 Integrator: ChemStation

Volume Inj. : 2 µl  
 Signal #1 Phase : ZB-MR1 Signal #2 Phase: ZB-MR2  
 Signal #1 Info : 30Mx0.32mmx 0.50µm Signal #2 Info : 30M x 0.32mm x 0.25µm

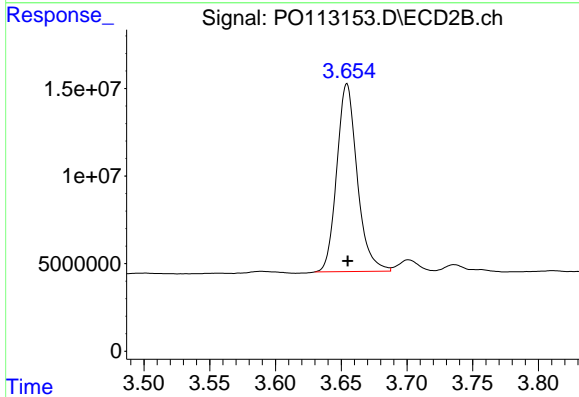




#1 Tetrachloro-m-xylene

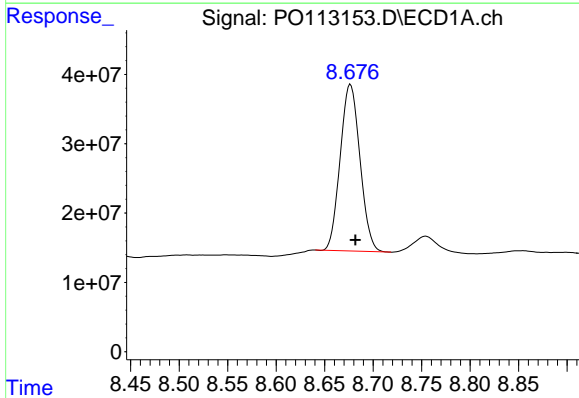
R.T.: 3.663 min  
 Delta R.T.: 0.000 min  
 Response: 197244827  
 Conc: 24.09 ng/ml

Instrument :  
 ECD\_O  
 ClientSampleId :  
 K262-9ARE



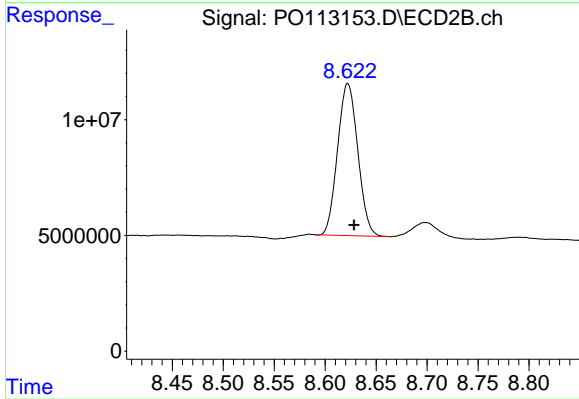
#1 Tetrachloro-m-xylene

R.T.: 3.654 min  
 Delta R.T.: 0.000 min  
 Response: 116137144  
 Conc: 22.95 ng/ml



#2 Decachlorobiphenyl

R.T.: 8.677 min  
 Delta R.T.: -0.005 min  
 Response: 340713707  
 Conc: 49.15 ng/ml



#2 Decachlorobiphenyl

R.T.: 8.622 min  
 Delta R.T.: -0.006 min  
 Response: 90802665  
 Conc: 47.92 ng/ml