

Data Path : Z:\pestpcbsrv\HPCHEM1\ECD\_0\Data\P0082125\  
 Data File : P0113154.D  
 Signal(s) : Signal #1: ECD1A.ch Signal #2: ECD2B.ch  
 Acq On : 22 Aug 2025 00:30  
 Operator : YP/AJ  
 Sample : Q2914-04RE  
 Misc :  
 ALS Vial : 13 Sample Multiplier: 1

Instrument :  
 ECD\_0  
 ClientSampleId :  
 K262-10ARE

Integration File signal 1: autoint1.e  
 Integration File signal 2: autoint2.e  
 Quant Time: Aug 22 02:44:28 2025  
 Quant Method : Z:\pestpcbsrv\HPCHEM1\ECD\_0\methods\P0081825.M  
 Quant Title : GC EXTRACTABLES  
 QLast Update : Tue Aug 19 06:08:32 2025  
 Response via : Initial Calibration  
 Integrator: ChemStation

Volume Inj. : 2 µl  
 Signal #1 Phase : ZB-MR1 Signal #2 Phase: ZB-MR2  
 Signal #1 Info : 30Mx0.32mmx 0.50µ Signal #2 Info : 30M x 0.32mm x 0.25µm

Compound	RT#1	RT#2	Resp#1	Resp#2	ng/ml	ng/ml
-----						
System Monitoring Compounds						
1) SA Tetrachlo...	3.663	3.654	165.2E6	97816668	20.178	19.329
2) SA Decachlor...	8.678	8.623	269.1E6	73825450	38.829	38.961

Target Compounds

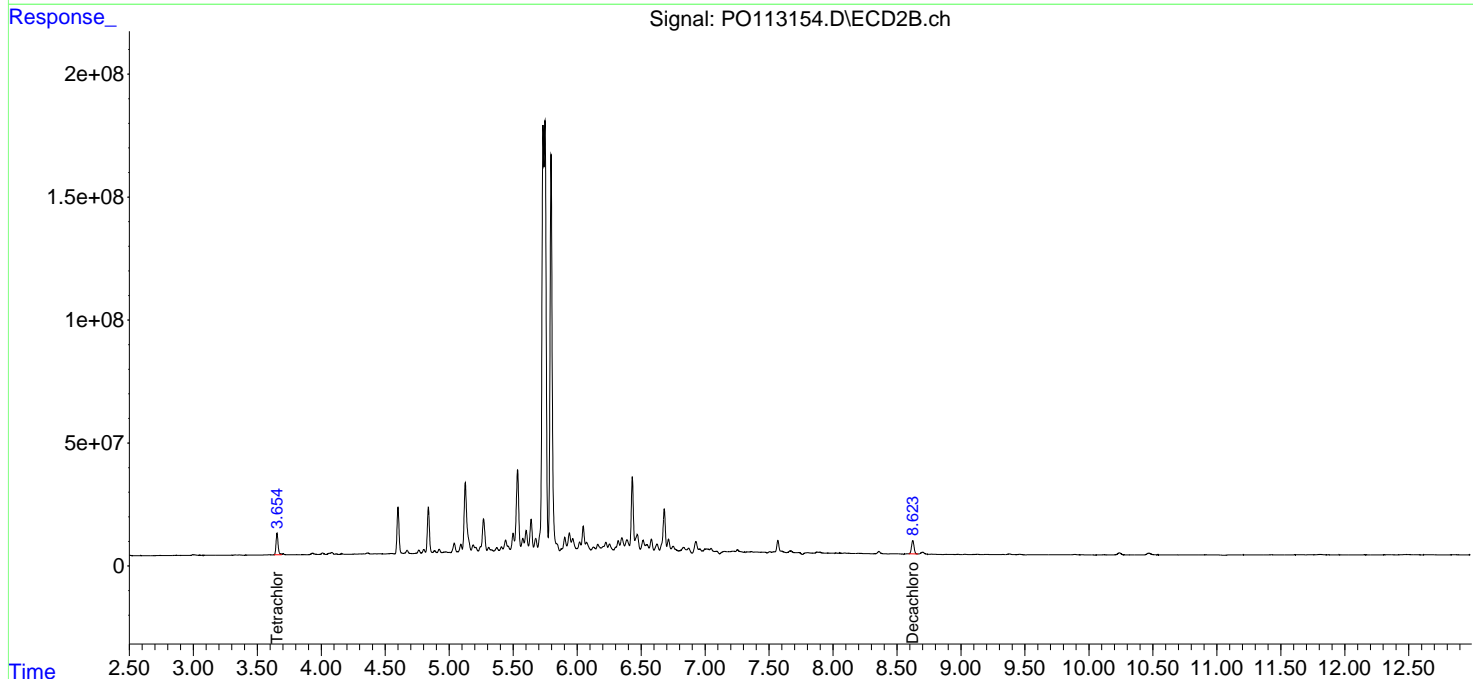
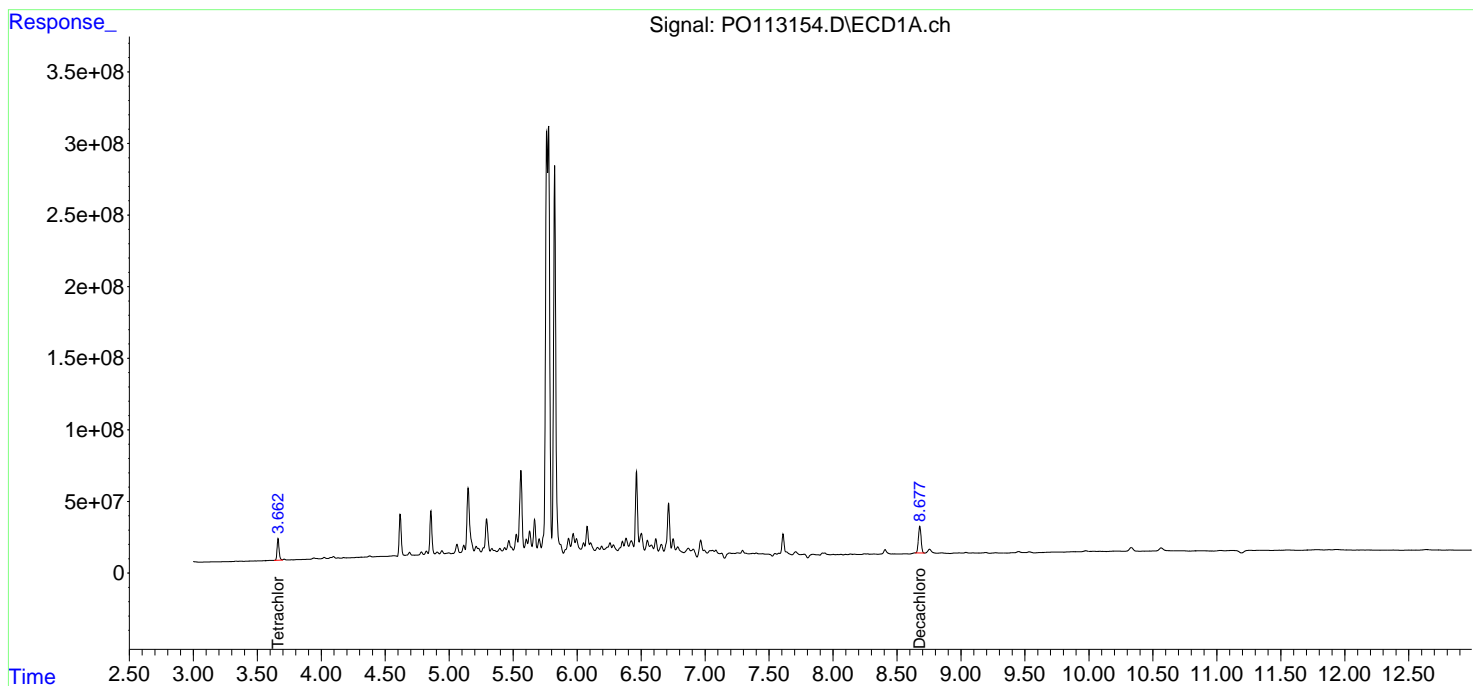
(f)=RT Delta > 1/2 Window (#)=Amounts differ by > 25% (m)=manual int.

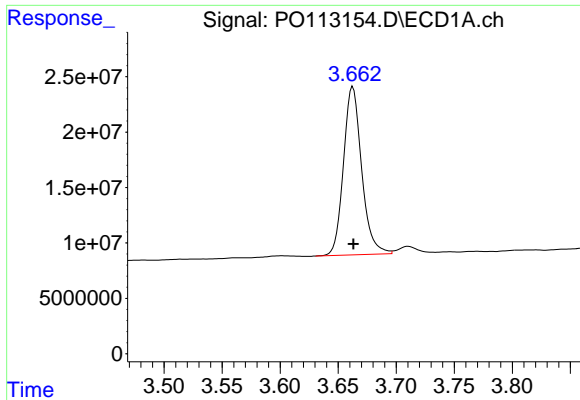
Data Path : Z:\pestpcbsrv\HPCHEM1\ECD\_0\Data\P0082125\  
 Data File : P0113154.D  
 Signal(s) : Signal #1: ECD1A.ch Signal #2: ECD2B.ch  
 Acq On : 22 Aug 2025 00:30  
 Operator : YP/AJ  
 Sample : Q2914-04RE  
 Misc :  
 ALS Vial : 13 Sample Multiplier: 1

Instrument :  
 ECD\_0  
 ClientSampleId :  
 K262-10ARE

Integration File signal 1: autoint1.e  
 Integration File signal 2: autoint2.e  
 Quant Time: Aug 22 02:44:28 2025  
 Quant Method : Z:\pestpcbsrv\HPCHEM1\ECD\_0\methods\P0081825.M  
 Quant Title : GC EXTRACTABLES  
 QLast Update : Tue Aug 19 06:08:32 2025  
 Response via : Initial Calibration  
 Integrator: ChemStation

Volume Inj. : 2 µl  
 Signal #1 Phase : ZB-MR1 Signal #2 Phase: ZB-MR2  
 Signal #1 Info : 30Mx0.32mmx 0.50µ Signal #2 Info : 30M x 0.32mm x 0.25µm

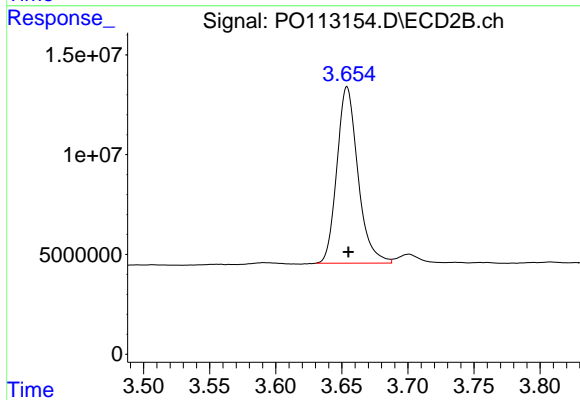




#1 Tetrachloro-m-xylene

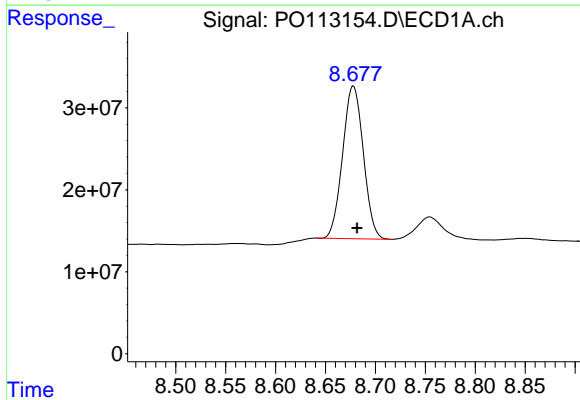
R.T.: 3.663 min  
 Delta R.T.: 0.000 min  
 Response: 165185950  
 Conc: 20.18 ng/ml

Instrument :  
 ECD\_O  
 ClientSampleId :  
 K262-10ARE



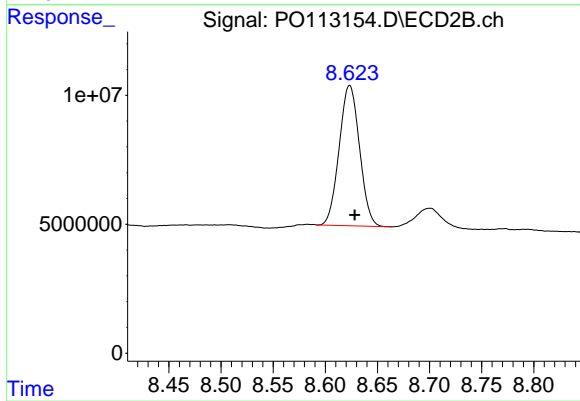
#1 Tetrachloro-m-xylene

R.T.: 3.654 min  
 Delta R.T.: 0.000 min  
 Response: 97816668  
 Conc: 19.33 ng/ml



#2 Decachlorobiphenyl

R.T.: 8.678 min  
 Delta R.T.: -0.003 min  
 Response: 269141627  
 Conc: 38.83 ng/ml



#2 Decachlorobiphenyl

R.T.: 8.623 min  
 Delta R.T.: -0.005 min  
 Response: 73825450  
 Conc: 38.96 ng/ml