

Data Path : Z:\pestpcbsrv\HPCHEM1\ECD_0\Data\P0082125\
 Data File : P0113156.D
 Signal(s) : Signal #1: ECD1A.ch Signal #2: ECD2B.ch
 Acq On : 22 Aug 2025 01:07
 Operator : YP/AJ
 Sample : Q2914-10RE
 Misc :
 ALS Vial : 15 Sample Multiplier: 1

Instrument :
 ECD_0
 ClientSampleId :
 K262-12ARE

Integration File signal 1: autoint1.e
 Integration File signal 2: autoint2.e
 Quant Time: Aug 22 02:45:04 2025
 Quant Method : Z:\pestpcbsrv\HPCHEM1\ECD_0\methods\P0081825.M
 Quant Title : GC EXTRACTABLES
 QLast Update : Tue Aug 19 06:08:32 2025
 Response via : Initial Calibration
 Integrator: ChemStation

Volume Inj. : 2 µl
 Signal #1 Phase : ZB-MR1 Signal #2 Phase: ZB-MR2
 Signal #1 Info : 30Mx0.32mmx 0.50µ Signal #2 Info : 30M x 0.32mm x 0.25µm

Compound	RT#1	RT#2	Resp#1	Resp#2	ng/ml	ng/ml

System Monitoring Compounds						
1) SA Tetrachlo...	3.662	3.654	193.7E6	111.0E6	23.666	21.925
2) SA Decachlor...	8.676	8.623	286.4E6	80141241	41.314	42.294

Target Compounds

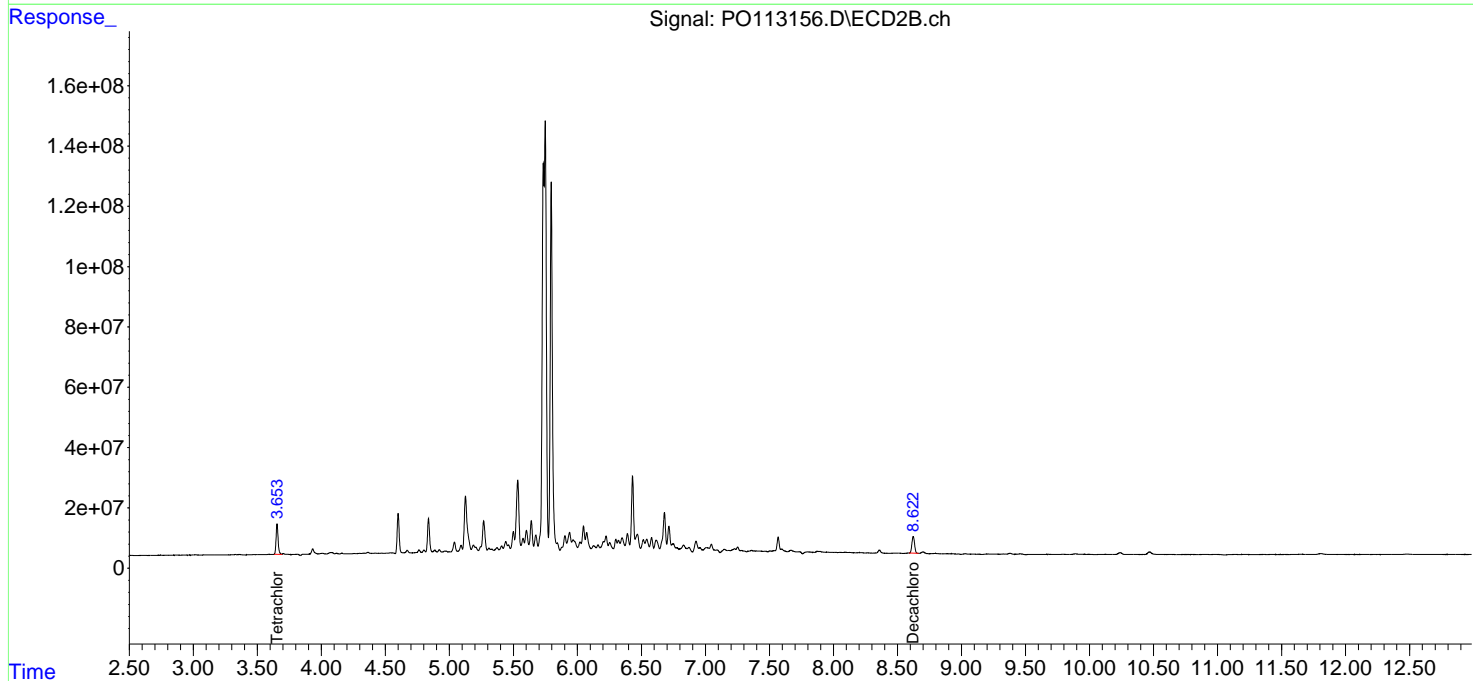
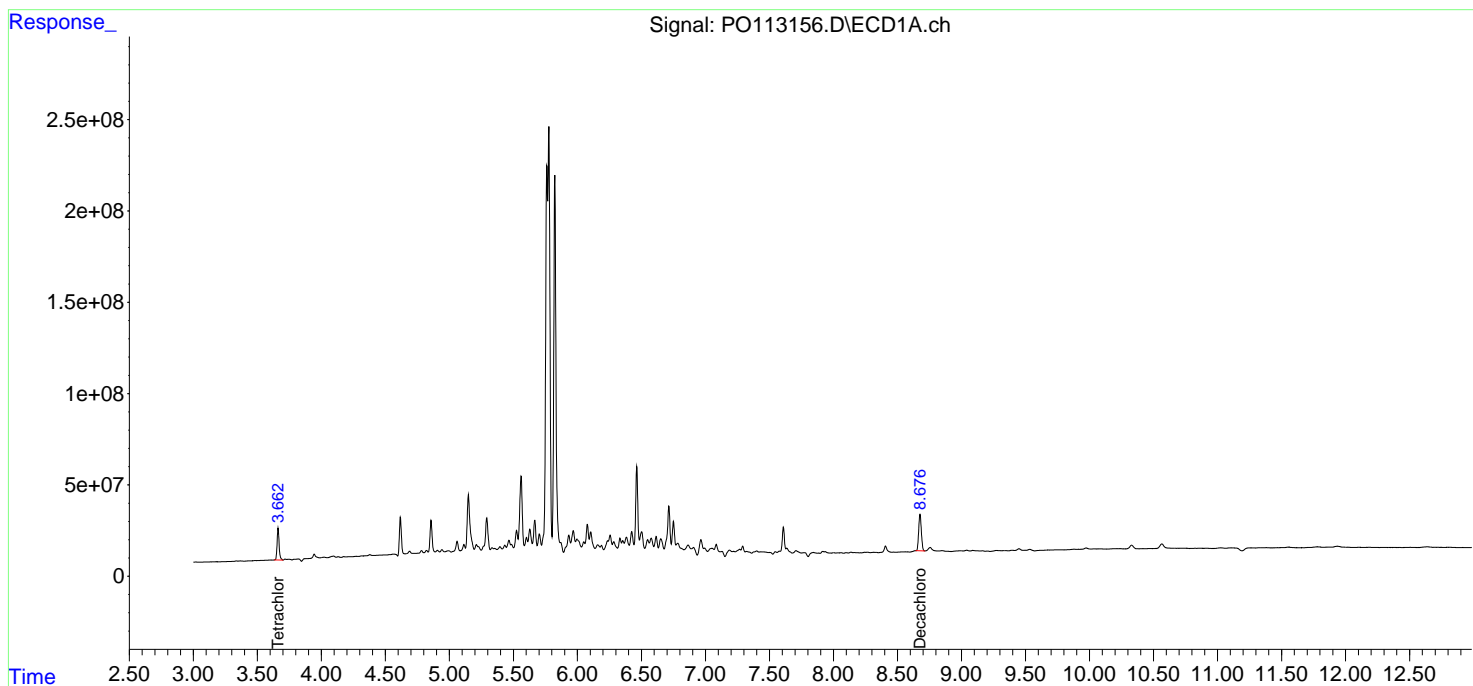
(f)=RT Delta > 1/2 Window (#)=Amounts differ by > 25% (m)=manual int.

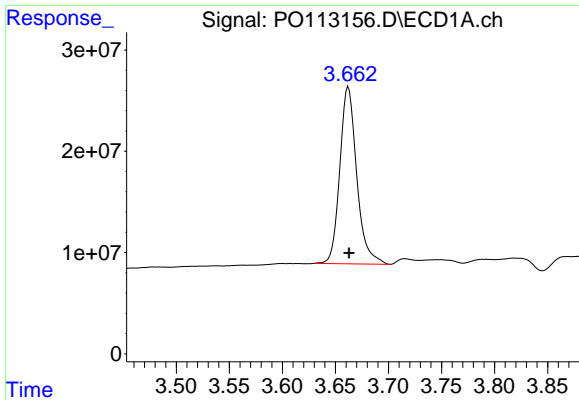
Data Path : Z:\pestpcbsrv\HPCHEM1\ECD_0\Data\PO082125\
 Data File : PO113156.D
 Signal(s) : Signal #1: ECD1A.ch Signal #2: ECD2B.ch
 Acq On : 22 Aug 2025 01:07
 Operator : YP/AJ
 Sample : Q2914-10RE
 Misc :
 ALS Vial : 15 Sample Multiplier: 1

Instrument :
 ECD_0
 ClientSampleId :
 K262-12ARE

Integration File signal 1: autoint1.e
 Integration File signal 2: autoint2.e
 Quant Time: Aug 22 02:45:04 2025
 Quant Method : Z:\pestpcbsrv\HPCHEM1\ECD_0\methods\PO081825.M
 Quant Title : GC EXTRACTABLES
 QLast Update : Tue Aug 19 06:08:32 2025
 Response via : Initial Calibration
 Integrator: ChemStation

Volume Inj. : 2 µl
 Signal #1 Phase : ZB-MR1 Signal #2 Phase: ZB-MR2
 Signal #1 Info : 30Mx0.32mmx 0.50µ Signal #2 Info : 30M x 0.32mm x 0.25µm

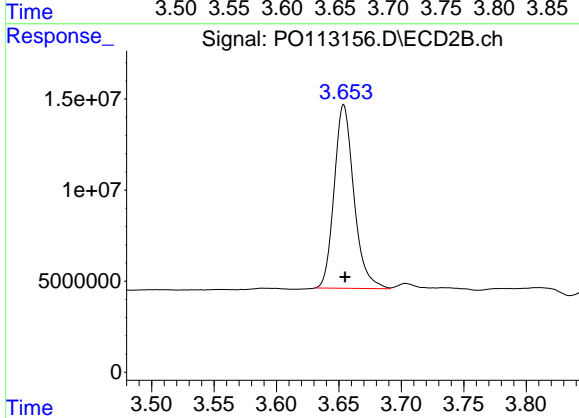




#1 Tetrachloro-m-xylene

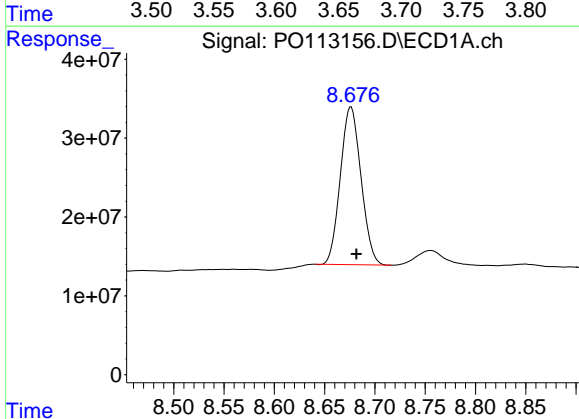
R.T.: 3.662 min
 Delta R.T.: 0.000 min
 Response: 193741935
 Conc: 23.67 ng/ml

Instrument :
 ECD_O
 ClientSampleId :
 K262-12ARE



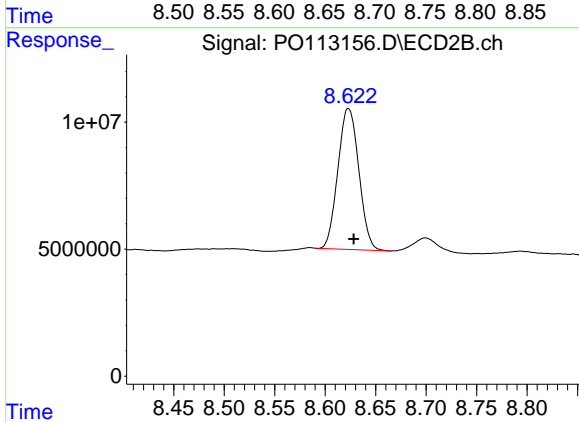
#1 Tetrachloro-m-xylene

R.T.: 3.654 min
 Delta R.T.: 0.000 min
 Response: 110956411
 Conc: 21.93 ng/ml



#2 Decachlorobiphenyl

R.T.: 8.676 min
 Delta R.T.: -0.005 min
 Response: 286363483
 Conc: 41.31 ng/ml



#2 Decachlorobiphenyl

R.T.: 8.623 min
 Delta R.T.: -0.005 min
 Response: 80141241
 Conc: 42.29 ng/ml