

Data Path : Z:\pestpcbsrv\HPCHEM1\ECD\_0\Data\P0082125\  
 Data File : PO113157.D  
 Signal(s) : Signal #1: ECD1A.ch Signal #2: ECD2B.ch  
 Acq On : 22 Aug 2025 02:21  
 Operator : YP/AJ  
 Sample : AR1660CCC500  
 Misc :  
 ALS Vial : 3 Sample Multiplier: 1

**Instrument :**  
 ECD\_0  
**ClientSampleId :**  
 AR1660CCC500

**Manual Integrations**  
**APPROVED**

Reviewed By :Yogesh Patel 08/22/2025  
 Supervised By :mohammad ahmed 08/25/2025

Integration File signal 1: autoint1.e  
 Integration File signal 2: autoint2.e  
 Quant Time: Aug 22 02:52:57 2025  
 Quant Method : Z:\pestpcbsrv\HPCHEM1\ECD\_0\methods\P0081825.M  
 Quant Title : GC EXTRACTABLES  
 QLast Update : Tue Aug 19 06:08:32 2025  
 Response via : Initial Calibration  
 Integrator: ChemStation

Volume Inj. : 2 µl  
 Signal #1 Phase : ZB-MR1 Signal #2 Phase: ZB-MR2  
 Signal #1 Info : 30Mx0.32mmx 0.50µ Signal #2 Info : 30M x 0.32mm x 0.25µm

Compound	RT#1	RT#2	Resp#1	Resp#2	ng/ml	ng/ml
-----						
System Monitoring Compounds						
1) SA Tetrachlo...	3.662	3.654	446.8E6	263.7E6	54.576	52.099
2) SA Decachlor...	8.681	8.627	350.8E6	95278873	50.614	50.283
Target Compounds						
3) L1 AR-1016-1	4.747	4.728	144.7E6	87807648	541.933	514.778
4) L1 AR-1016-2	4.766	4.746	221.8E6	132.9E6	552.563	515.898
5) L1 AR-1016-3	4.822	4.921	141.5E6	71045338	554.745	508.868
6) L1 AR-1016-4	4.942	4.964	109.7E6	56015526	502.850	480.000
7) L1 AR-1016-5	5.198	5.175	117.7E6	84641029	531.168m	593.847
31) L7 AR-1260-1	6.235	6.203	233.8E6	127.3E6	524.349	498.893
32) L7 AR-1260-2	6.424	6.391	369.5E6	175.5E6	538.026	507.524
33) L7 AR-1260-3	6.790	6.543	316.9E6	137.2E6	513.145	461.263
34) L7 AR-1260-4	7.049	7.012	228.7E6	101.7E6	510.699	490.499
35) L7 AR-1260-5	7.293	7.255	623.7E6	231.5E6	515.156	494.246

(f)=RT Delta > 1/2 Window (#)=Amounts differ by > 25% (m)=manual int.

Data Path : Z:\pestpcbsrv\HPCHEM1\ECD\_O\Data\PO082125\  
 Data File : PO113157.D  
 Signal(s) : Signal #1: ECD1A.ch Signal #2: ECD2B.ch  
 Acq On : 22 Aug 2025 02:21  
 Operator : YP/AJ  
 Sample : AR1660CCC500  
 Misc :  
 ALS Vial : 3 Sample Multiplier: 1

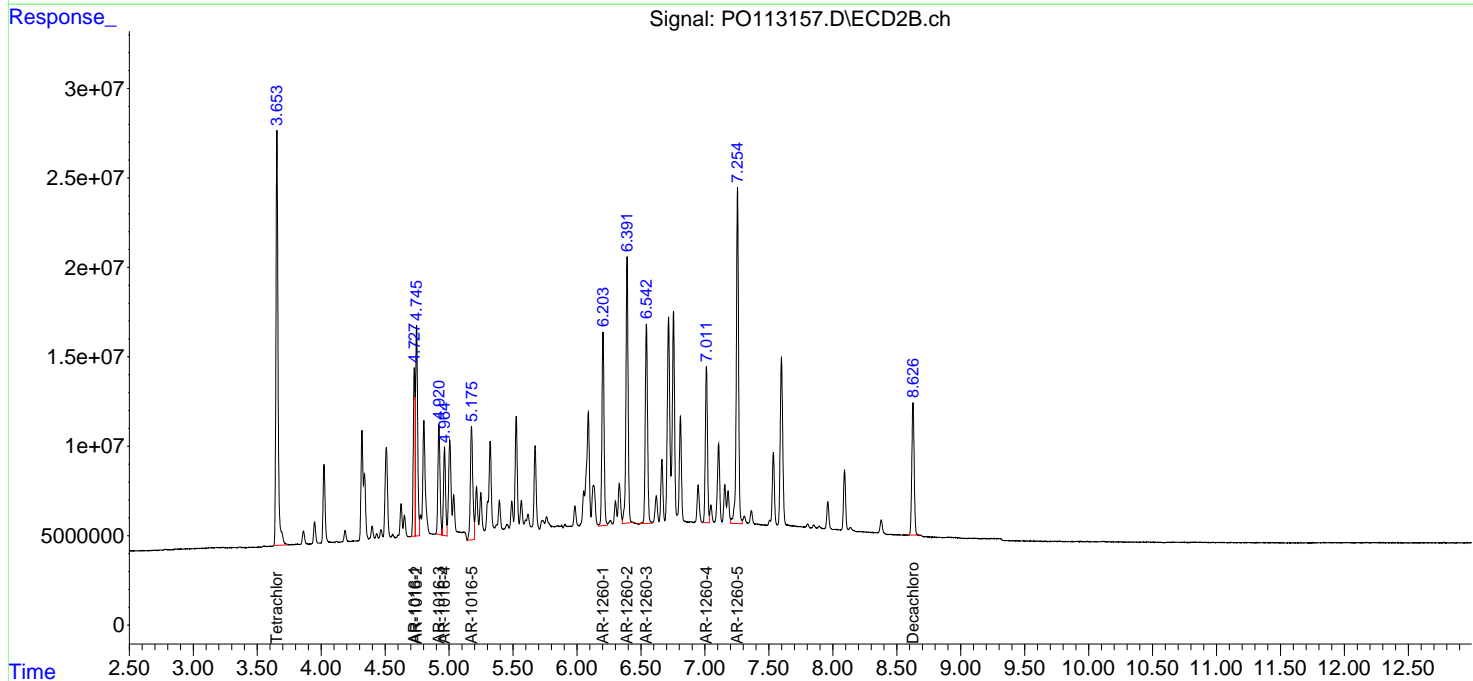
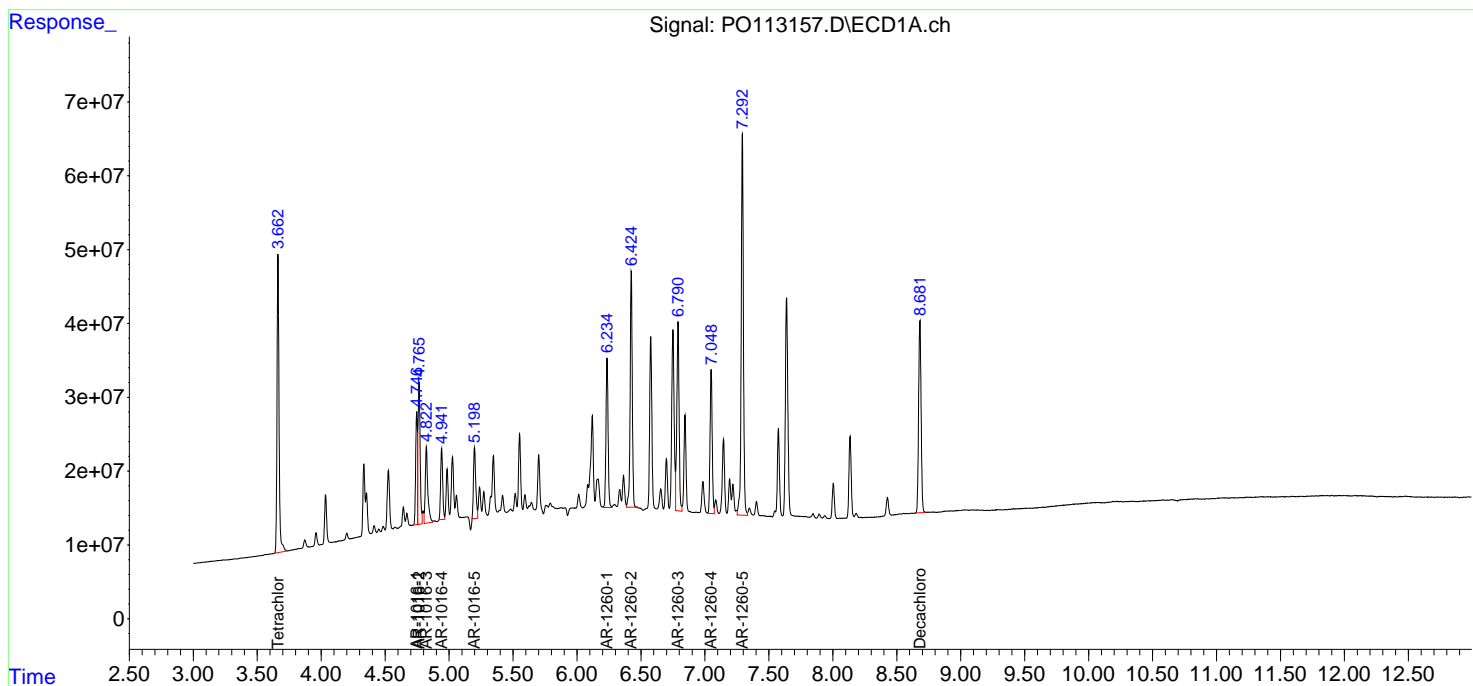
Instrument :  
 ECD\_O  
 ClientSampleId :  
 AR1660CCC500

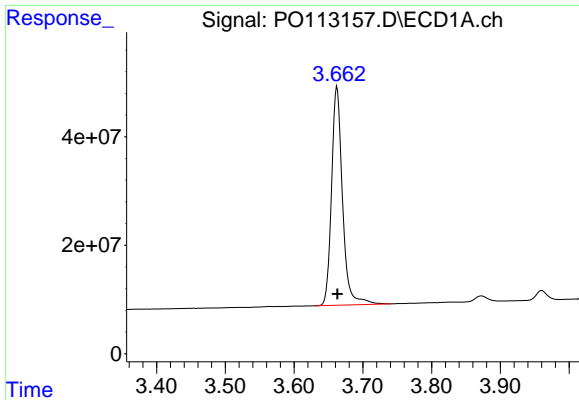
Manual Integrations  
 APPROVED

Reviewed By :Yogesh Patel 08/22/2025  
 Supervised By :mohammad ahmed 08/25/2025

Integration File signal 1: autoint1.e  
 Integration File signal 2: autoint2.e  
 Quant Time: Aug 22 02:52:57 2025  
 Quant Method : Z:\pestpcbsrv\HPCHEM1\ECD\_O\methods\PO081825.M  
 Quant Title : GC EXTRACTABLES  
 QLast Update : Tue Aug 19 06:08:32 2025  
 Response via : Initial Calibration  
 Integrator: ChemStation

Volume Inj. : 2 µl  
 Signal #1 Phase : ZB-MR1 Signal #2 Phase: ZB-MR2  
 Signal #1 Info : 30Mx0.32mmx 0.50µ Signal #2 Info : 30M x 0.32mm x 0.25µm



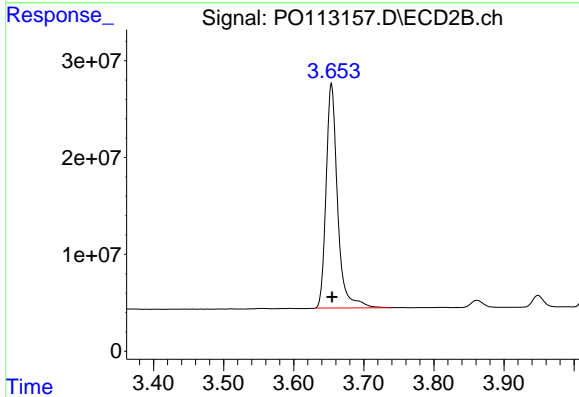


#1 Tetrachloro-m-xylene  
 R.T.: 3.662 min  
 Delta R.T.: 0.000 min  
 Response: 446791110  
 Conc: 54.58 ng/ml

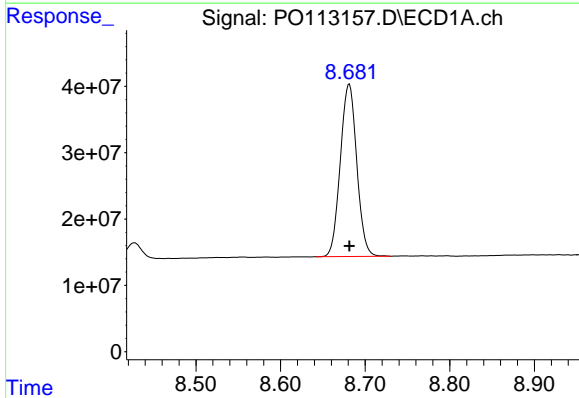
Instrument :  
 ECD\_O  
 ClientSampleId :  
 AR1660CCC500

Manual Integrations  
 APPROVED

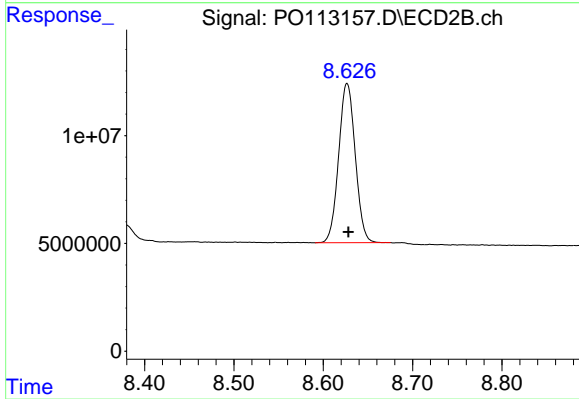
Reviewed By :Yogesh Patel 08/22/2025  
 Supervised By :mohammad ahmed 08/25/2025



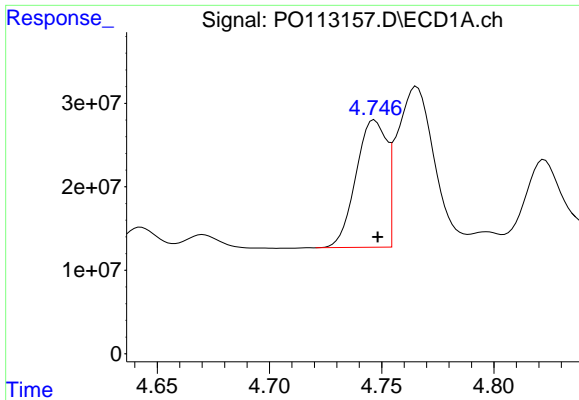
#1 Tetrachloro-m-xylene  
 R.T.: 3.654 min  
 Delta R.T.: -0.001 min  
 Response: 263655550  
 Conc: 52.10 ng/ml



#2 Decachlorobiphenyl  
 R.T.: 8.681 min  
 Delta R.T.: 0.000 min  
 Response: 350827400  
 Conc: 50.61 ng/ml



#2 Decachlorobiphenyl  
 R.T.: 8.627 min  
 Delta R.T.: -0.002 min  
 Response: 95278873  
 Conc: 50.28 ng/ml



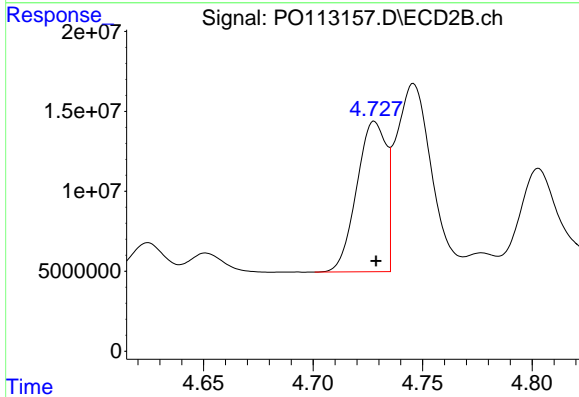
#3 AR-1016-1

R.T.: 4.747 min  
 Delta R.T.: -0.001 min  
 Response: 144687914  
 Conc: 541.93 ng/ml

Instrument :  
 ECD\_O  
 ClientSampleId :  
 AR1660CCC500

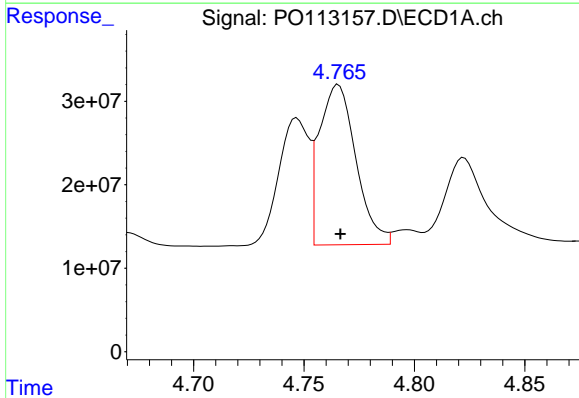
Manual Integrations  
 APPROVED

Reviewed By :Yogesh Patel 08/22/2025  
 Supervised By :mohammad ahmed 08/25/2025



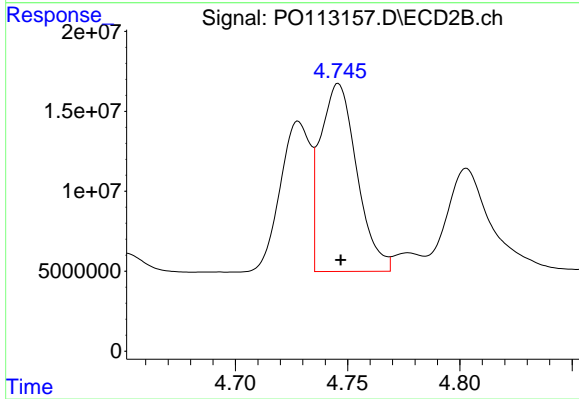
#3 AR-1016-1

R.T.: 4.728 min  
 Delta R.T.: 0.000 min  
 Response: 87807648  
 Conc: 514.78 ng/ml



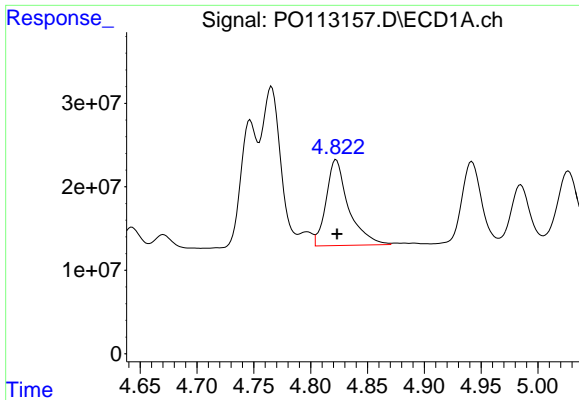
#4 AR-1016-2

R.T.: 4.766 min  
 Delta R.T.: 0.000 min  
 Response: 221816179  
 Conc: 552.56 ng/ml



#4 AR-1016-2

R.T.: 4.746 min  
 Delta R.T.: -0.001 min  
 Response: 132924366  
 Conc: 515.90 ng/ml



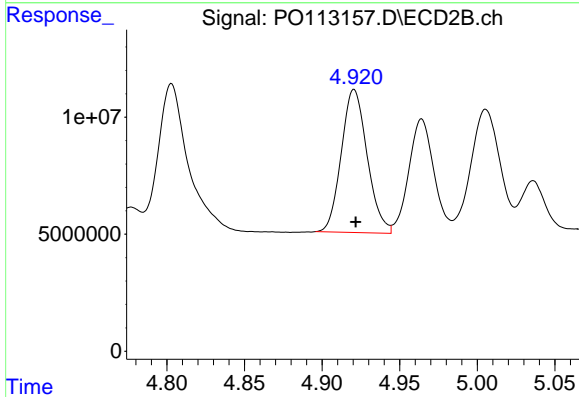
#5 AR-1016-3

R.T.: 4.822 min  
 Delta R.T.: 0.000 min  
 Response: 141472310  
 Conc: 554.74 ng/ml

Instrument :  
 ECD\_O  
 ClientSampleId :  
 AR1660CCC500

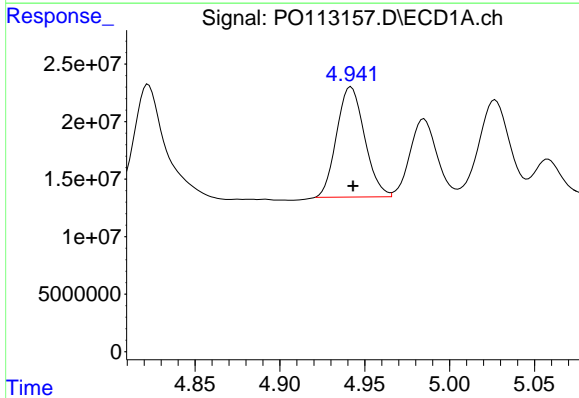
Manual Integrations  
 APPROVED

Reviewed By :Yogesh Patel 08/22/2025  
 Supervised By :mohammad ahmed 08/25/2025



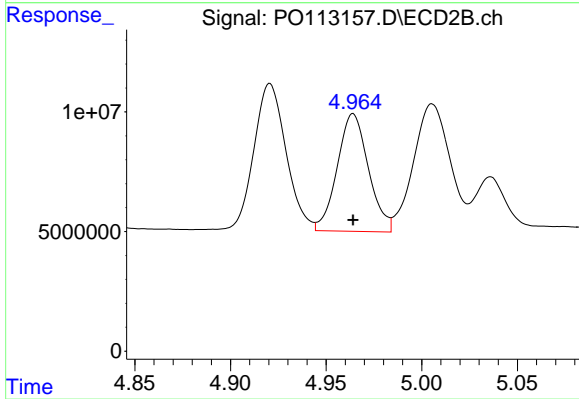
#5 AR-1016-3

R.T.: 4.921 min  
 Delta R.T.: 0.000 min  
 Response: 71045338  
 Conc: 508.87 ng/ml



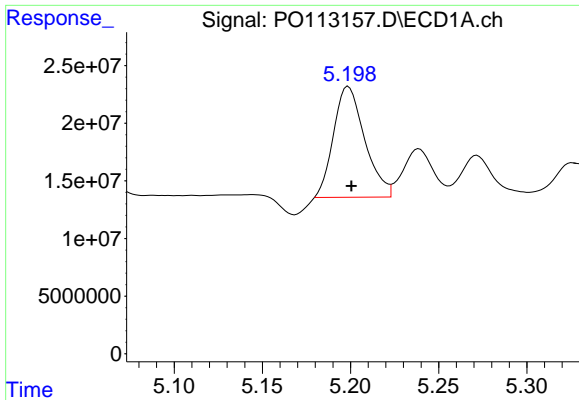
#6 AR-1016-4

R.T.: 4.942 min  
 Delta R.T.: -0.001 min  
 Response: 109655443  
 Conc: 502.85 ng/ml



#6 AR-1016-4

R.T.: 4.964 min  
 Delta R.T.: 0.000 min  
 Response: 56015526  
 Conc: 480.00 ng/ml



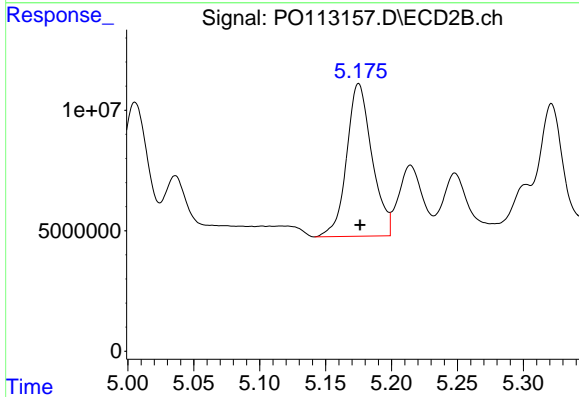
#7 AR-1016-5

R.T.: 5.198 min  
 Delta R.T.: -0.002 min  
 Response: 117721582  
 Conc: 531.17 ng/ml

Instrument :  
 ECD\_O  
 ClientSampleId :  
 AR1660CCC500

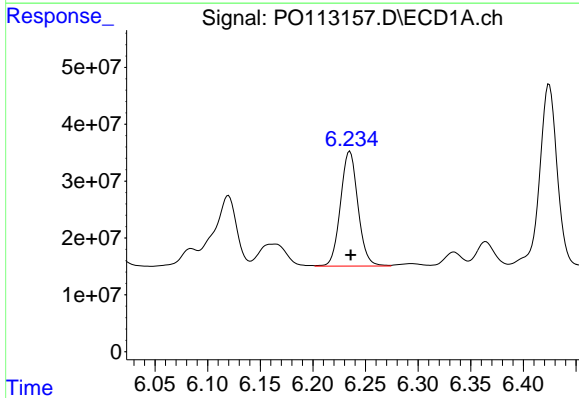
Manual Integrations  
 APPROVED

Reviewed By :Yogesh Patel 08/22/2025  
 Supervised By :mohammad ahmed 08/25/2025



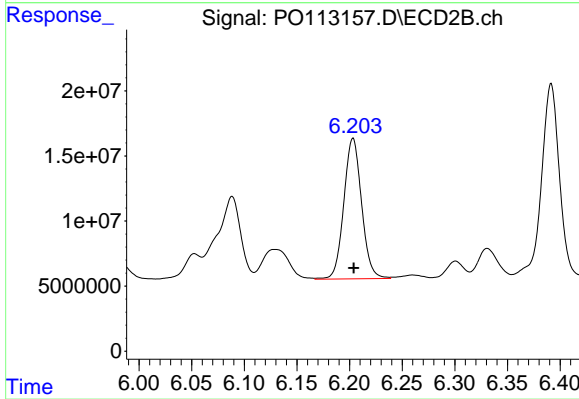
#7 AR-1016-5

R.T.: 5.175 min  
 Delta R.T.: -0.001 min  
 Response: 84641029  
 Conc: 593.85 ng/ml



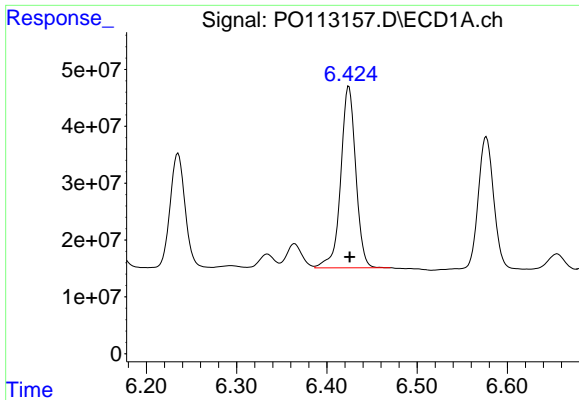
#31 AR-1260-1

R.T.: 6.235 min  
 Delta R.T.: -0.001 min  
 Response: 233849469  
 Conc: 524.35 ng/ml



#31 AR-1260-1

R.T.: 6.203 min  
 Delta R.T.: 0.000 min  
 Response: 127251967  
 Conc: 498.89 ng/ml



#32 AR-1260-2

R.T.: 6.424 min  
 Delta R.T.: -0.001 min  
 Response: 369473781  
 Conc: 538.03 ng/ml

Instrument :

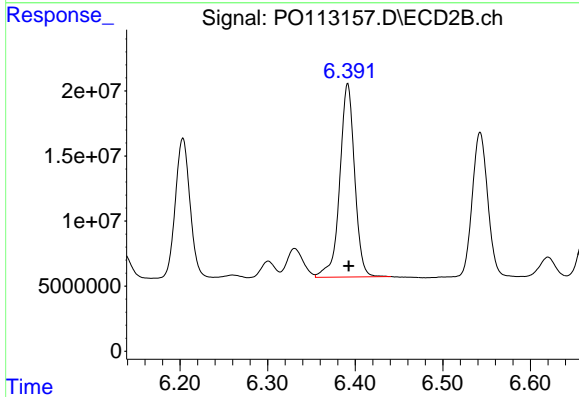
ECD\_O

ClientSampleId :

AR1660CCC500

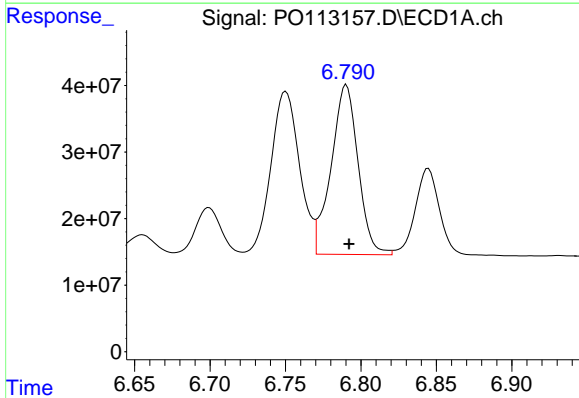
Manual Integrations  
 APPROVED

Reviewed By :Yogesh Patel 08/22/2025  
 Supervised By :mohammad ahmed 08/25/2025



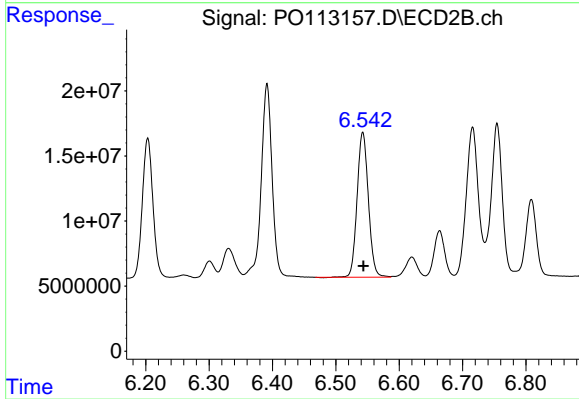
#32 AR-1260-2

R.T.: 6.391 min  
 Delta R.T.: -0.001 min  
 Response: 175456932  
 Conc: 507.52 ng/ml



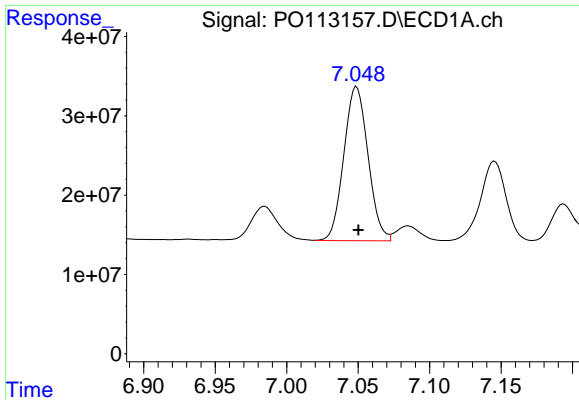
#33 AR-1260-3

R.T.: 6.790 min  
 Delta R.T.: -0.002 min  
 Response: 316853459  
 Conc: 513.14 ng/ml



#33 AR-1260-3

R.T.: 6.543 min  
 Delta R.T.: -0.001 min  
 Response: 137195321  
 Conc: 461.26 ng/ml



#34 AR-1260-4

R.T.: 7.049 min  
 Delta R.T.: -0.001 min  
 Response: 228728947  
 Conc: 510.70 ng/ml

Instrument :

ECD\_O

ClientSampleId :

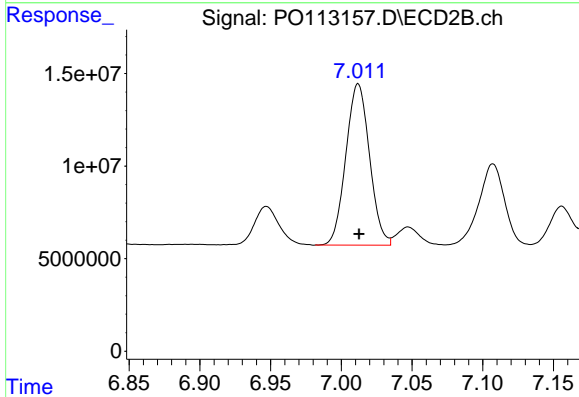
AR1660CCC500

Manual Integrations

APPROVED

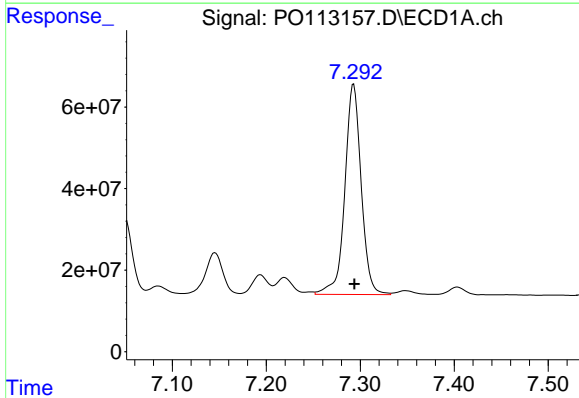
Reviewed By :Yogesh Patel 08/22/2025

Supervised By :mohammad ahmed 08/25/2025



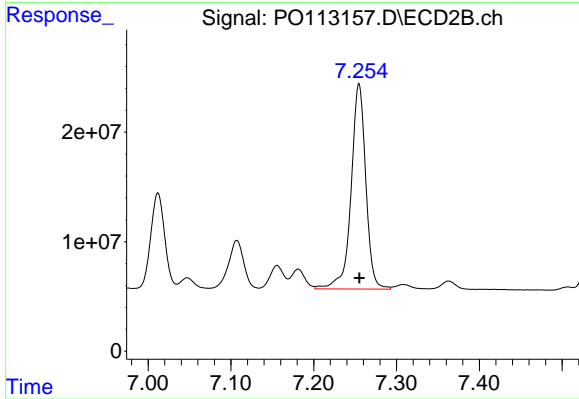
#34 AR-1260-4

R.T.: 7.012 min  
 Delta R.T.: 0.000 min  
 Response: 101655757  
 Conc: 490.50 ng/ml



#35 AR-1260-5

R.T.: 7.293 min  
 Delta R.T.: 0.000 min  
 Response: 623690890  
 Conc: 515.16 ng/ml



#35 AR-1260-5

R.T.: 7.255 min  
 Delta R.T.: 0.000 min  
 Response: 231519357  
 Conc: 494.25 ng/ml