

Data Path : Z:\pestpcbsrv\HPCHEM1\ECD\_0\Data\P0082125\  
 Data File : P0113159.D  
 Signal(s) : Signal #1: ECD1A.ch Signal #2: ECD2B.ch  
 Acq On : 22 Aug 2025 03:33  
 Operator : YP/AJ  
 Sample : AR1248CCC500  
 Misc :  
 ALS Vial : 5 Sample Multiplier: 1

Instrument :  
 ECD\_0  
 ClientSampleId :  
 AR1248CCC500

Integration File signal 1: autoint1.e  
 Integration File signal 2: autoint2.e  
 Quant Time: Aug 22 04:27:06 2025  
 Quant Method : Z:\pestpcbsrv\HPCHEM1\ECD\_0\methods\P0081825.M  
 Quant Title : GC EXTRACTABLES  
 QLast Update : Tue Aug 19 06:08:32 2025  
 Response via : Initial Calibration  
 Integrator: ChemStation

Volume Inj. : 2 µl  
 Signal #1 Phase : ZB-MR1 Signal #2 Phase: ZB-MR2  
 Signal #1 Info : 30Mx0.32mmx 0.50µ Signal #2 Info : 30M x 0.32mm x 0.25µm

Compound	RT#1	RT#2	Resp#1	Resp#2	ng/ml	ng/ml
-----						
System Monitoring Compounds						
1) SA Tetrachlo...	3.661	3.654	449.6E6	265.4E6	54.923	52.438
2) SA Decachlor...	8.678	8.626	368.2E6	99020724	53.120	52.258
Target Compounds						
21) L5 AR-1248-1	4.745	4.728	95400325	59581493	546.812	534.306
22) L5 AR-1248-2	4.983	4.963	125.3E6	82388745	517.901	512.690
23) L5 AR-1248-3	5.197	5.005	185.0E6	88782836	580.214	523.296
24) L5 AR-1248-4	5.550	5.175	269.3E6	107.7E6	539.113	540.724
25) L5 AR-1248-5	5.591	5.565	182.6E6	107.1E6	534.755	504.442
-----						

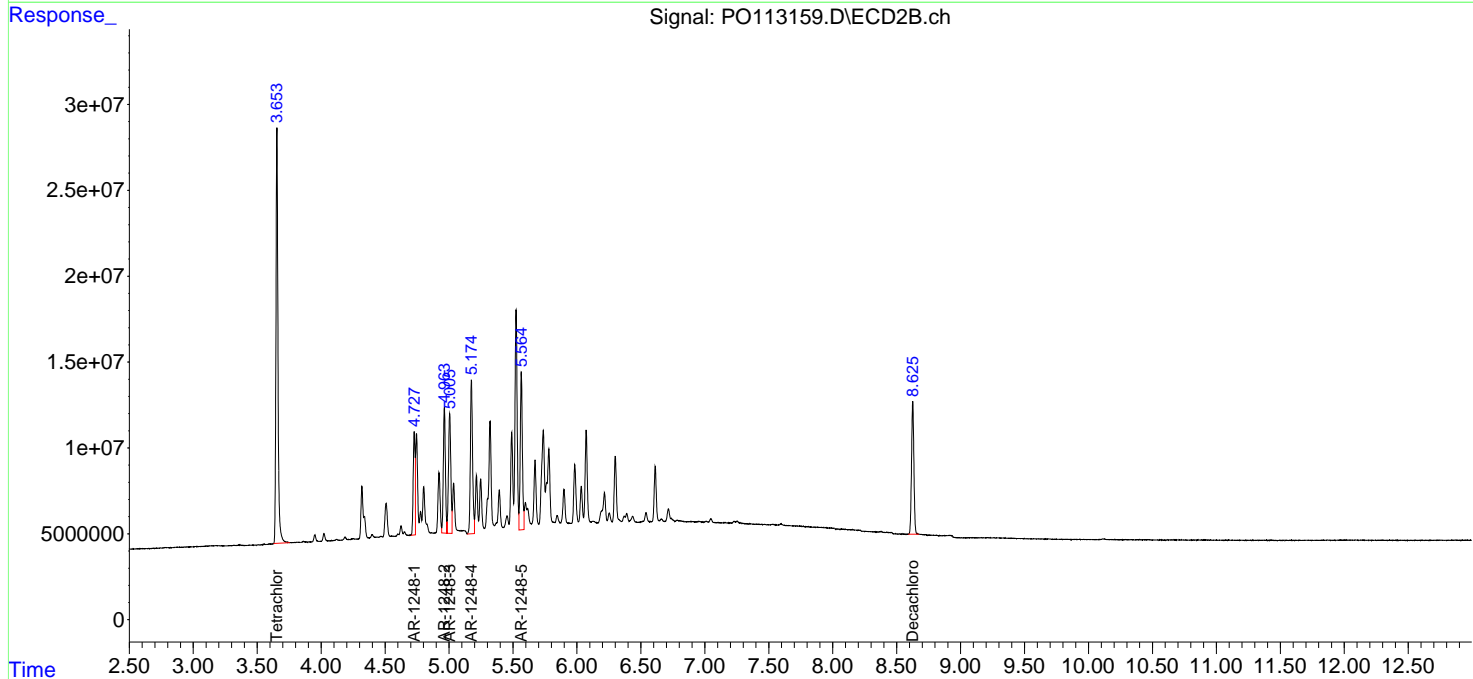
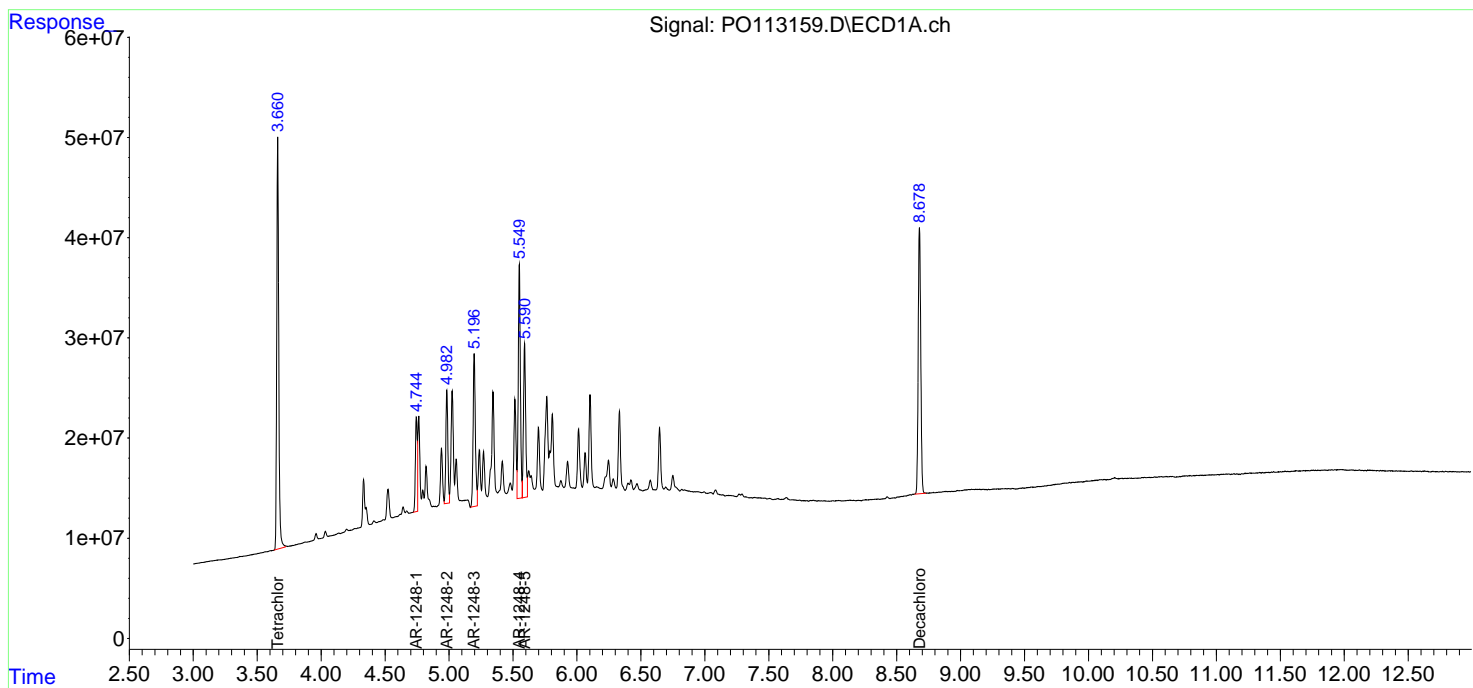
(f)=RT Delta > 1/2 Window (#)=Amounts differ by > 25% (m)=manual int.

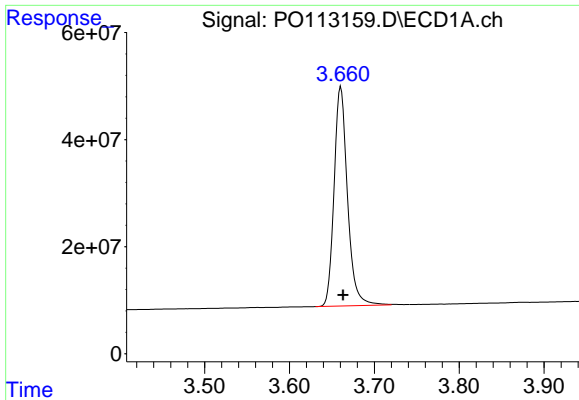
Data Path : Z:\pestpcbsrv\HPCHEM1\ECD\_O\Data\P0082125\  
 Data File : P0113159.D  
 Signal(s) : Signal #1: ECD1A.ch Signal #2: ECD2B.ch  
 Acq On : 22 Aug 2025 03:33  
 Operator : YP/AJ  
 Sample : AR1248CCC500  
 Misc :  
 ALS Vial : 5 Sample Multiplier: 1

Instrument :  
 ECD\_O  
 ClientSampleId :  
 AR1248CCC500

Integration File signal 1: autoint1.e  
 Integration File signal 2: autoint2.e  
 Quant Time: Aug 22 04:27:06 2025  
 Quant Method : Z:\pestpcbsrv\HPCHEM1\ECD\_O\methods\P0081825.M  
 Quant Title : GC EXTRACTABLES  
 QLast Update : Tue Aug 19 06:08:32 2025  
 Response via : Initial Calibration  
 Integrator: ChemStation

Volume Inj. : 2 µl  
 Signal #1 Phase : ZB-MR1 Signal #2 Phase: ZB-MR2  
 Signal #1 Info : 30Mx0.32mmx 0.50µ Signal #2 Info : 30M x 0.32mm x 0.25µm

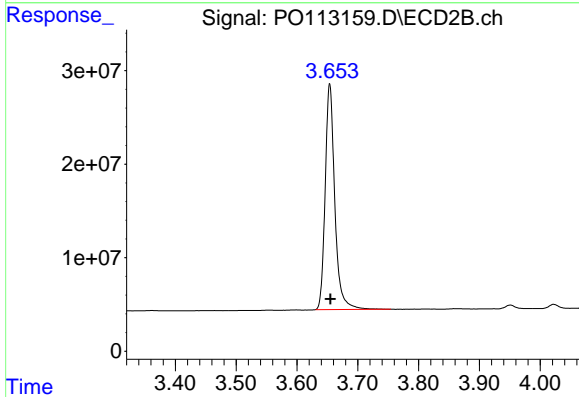




#1 Tetrachloro-m-xylene

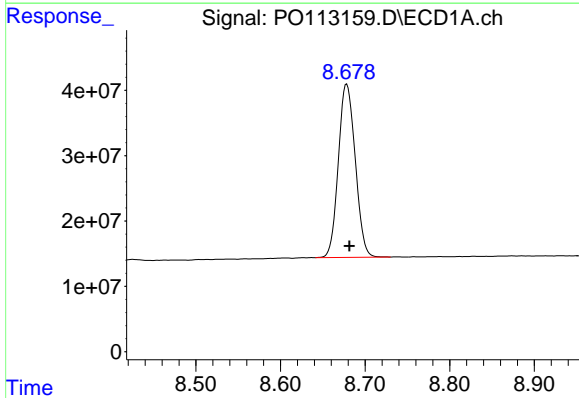
R.T.: 3.661 min  
 Delta R.T.: -0.002 min  
 Response: 449630871  
 Conc: 54.92 ng/ml

Instrument :  
 ECD\_O  
 ClientSampleId :  
 AR1248CCC500



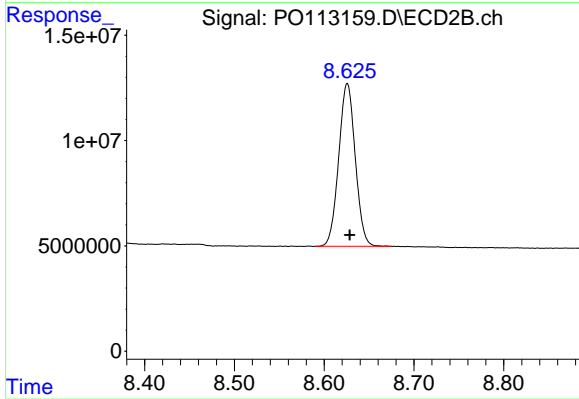
#1 Tetrachloro-m-xylene

R.T.: 3.654 min  
 Delta R.T.: 0.000 min  
 Response: 265369503  
 Conc: 52.44 ng/ml



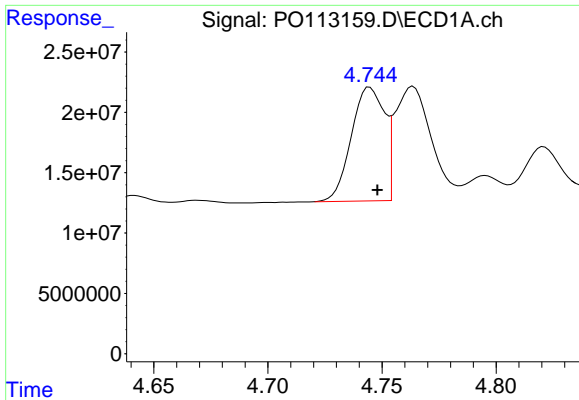
#2 Decachlorobiphenyl

R.T.: 8.678 min  
 Delta R.T.: -0.003 min  
 Response: 368195431  
 Conc: 53.12 ng/ml



#2 Decachlorobiphenyl

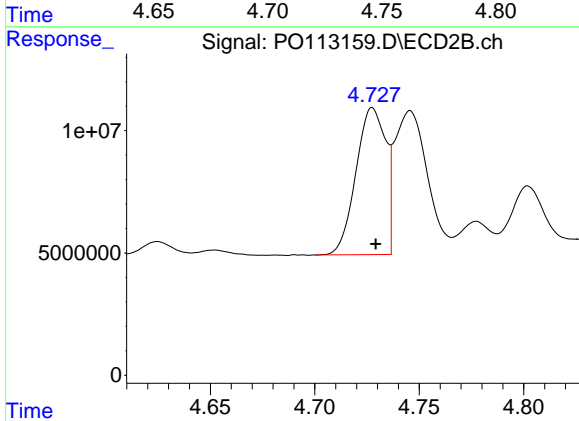
R.T.: 8.626 min  
 Delta R.T.: -0.002 min  
 Response: 99020724  
 Conc: 52.26 ng/ml



#21 AR-1248-1

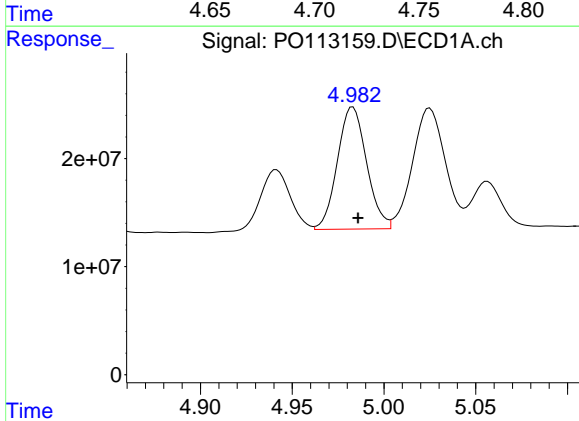
R.T.: 4.745 min  
 Delta R.T.: -0.003 min  
 Response: 95400325  
 Conc: 546.81 ng/ml

Instrument :  
 ECD\_O  
 ClientSampleId :  
 AR1248CCC500



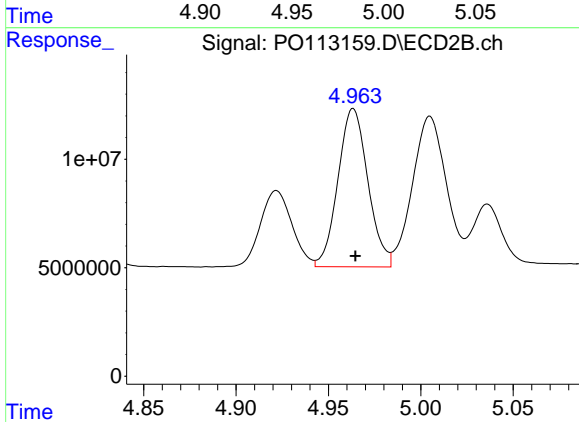
#21 AR-1248-1

R.T.: 4.728 min  
 Delta R.T.: -0.002 min  
 Response: 59581493  
 Conc: 534.31 ng/ml



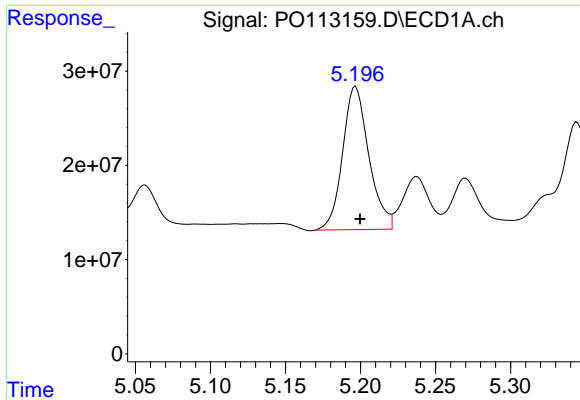
#22 AR-1248-2

R.T.: 4.983 min  
 Delta R.T.: -0.003 min  
 Response: 125262571  
 Conc: 517.90 ng/ml



#22 AR-1248-2

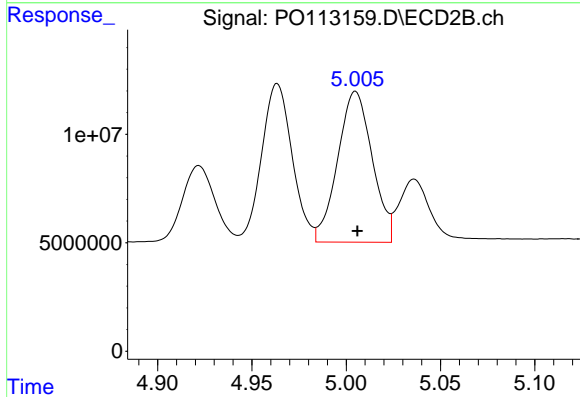
R.T.: 4.963 min  
 Delta R.T.: -0.001 min  
 Response: 82388745  
 Conc: 512.69 ng/ml



#23 AR-1248-3

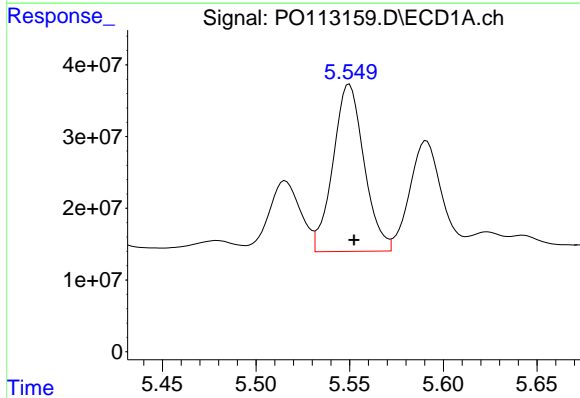
R.T.: 5.197 min  
 Delta R.T.: -0.003 min  
 Response: 185009413  
 Conc: 580.21 ng/ml

Instrument :  
 ECD\_O  
 ClientSampleId :  
 AR1248CCC500



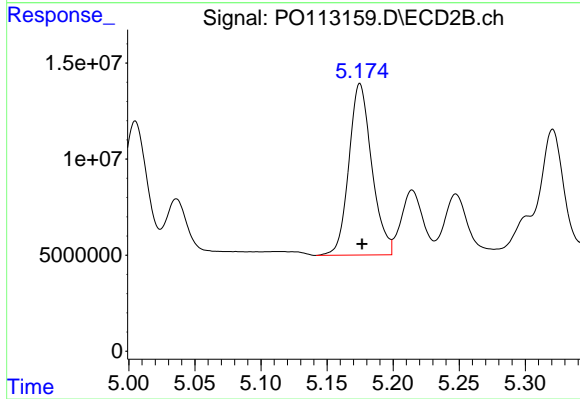
#23 AR-1248-3

R.T.: 5.005 min  
 Delta R.T.: -0.001 min  
 Response: 88782836  
 Conc: 523.30 ng/ml



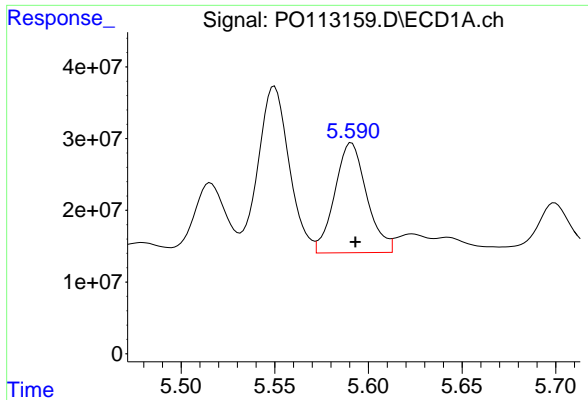
#24 AR-1248-4

R.T.: 5.550 min  
 Delta R.T.: -0.003 min  
 Response: 269343268  
 Conc: 539.11 ng/ml



#24 AR-1248-4

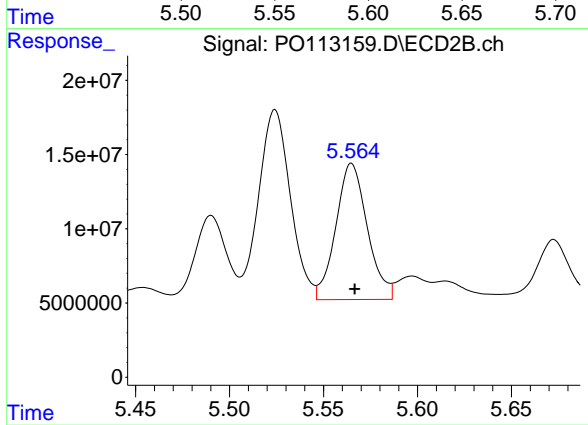
R.T.: 5.175 min  
 Delta R.T.: -0.002 min  
 Response: 107723164  
 Conc: 540.72 ng/ml



#25 AR-1248-5

R.T.: 5.591 min  
Delta R.T.: -0.002 min  
Response: 182614369  
Conc: 534.76 ng/ml

Instrument :  
ECD\_O  
ClientSampleId :  
AR1248CCC500



#25 AR-1248-5

R.T.: 5.565 min  
Delta R.T.: -0.002 min  
Response: 107091252  
Conc: 504.44 ng/ml