

Data Path : Z:\pestpcbsrv\HPCHEM1\ECD\_0\Data\P0082125\  
 Data File : PO113160.D  
 Signal(s) : Signal #1: ECD1A.ch Signal #2: ECD2B.ch  
 Acq On : 22 Aug 2025 03:52  
 Operator : YP/AJ  
 Sample : AR1254CCC500  
 Misc :  
 ALS Vial : 6 Sample Multiplier: 1

**Instrument :**  
 ECD\_0  
**ClientSampleId :**  
 AR1254CCC500

**Manual Integrations**  
**APPROVED**  
 Reviewed By :Yogesh Patel 08/22/2025  
 Supervised By :mohammad ahmed 08/25/2025

Integration File signal 1: autoint1.e  
 Integration File signal 2: autoint2.e  
 Quant Time: Aug 22 04:27:21 2025  
 Quant Method : Z:\pestpcbsrv\HPCHEM1\ECD\_0\methods\P0081825.M  
 Quant Title : GC EXTRACTABLES  
 QLast Update : Tue Aug 19 06:08:32 2025  
 Response via : Initial Calibration  
 Integrator: ChemStation

Volume Inj. : 2 µl  
 Signal #1 Phase : ZB-MR1 Signal #2 Phase: ZB-MR2  
 Signal #1 Info : 30Mx0.32mmx 0.50µ Signal #2 Info : 30M x 0.32mm x 0.25µm

Compound	RT#1	RT#2	Resp#1	Resp#2	ng/ml	ng/ml
-----						
System Monitoring Compounds						
1) SA Tetrachlo...	3.663	3.655	463.6E6	270.6E6	56.634	53.481
2) SA Decachlor...	8.682	8.627	374.7E6	100.9E6	54.058	53.269
Target Compounds						
26) L6 AR-1254-1	5.551	5.525	282.4E6	180.9E6	523.061m	573.622
27) L6 AR-1254-2	5.701	5.673	260.1E6	158.7E6	527.068m	565.972
28) L6 AR-1254-3	6.105	6.073	395.8E6	222.0E6	535.721	532.557
29) L6 AR-1254-4	6.334	6.301	289.4E6	140.3E6	519.617	510.477
30) L6 AR-1254-5	6.752	6.716	382.7E6	177.5E6	545.936	496.392
-----						

(f)=RT Delta > 1/2 Window (#)=Amounts differ by > 25% (m)=manual int.

Data Path : Z:\pestpcbsrv\HPCHEM1\ECD\_O\Data\PO082125\  
 Data File : PO113160.D  
 Signal(s) : Signal #1: ECD1A.ch Signal #2: ECD2B.ch  
 Acq On : 22 Aug 2025 03:52  
 Operator : YP/AJ  
 Sample : AR1254CCC500  
 Misc :  
 ALS Vial : 6 Sample Multiplier: 1

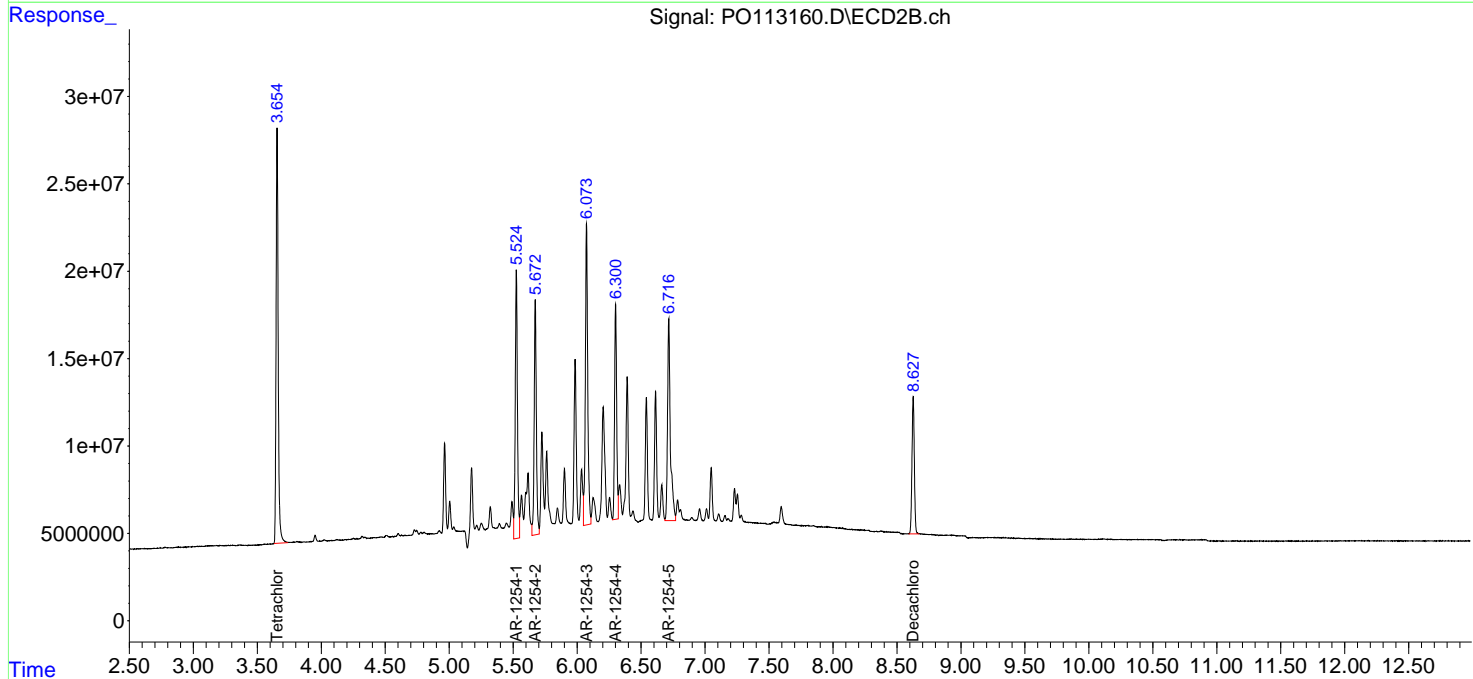
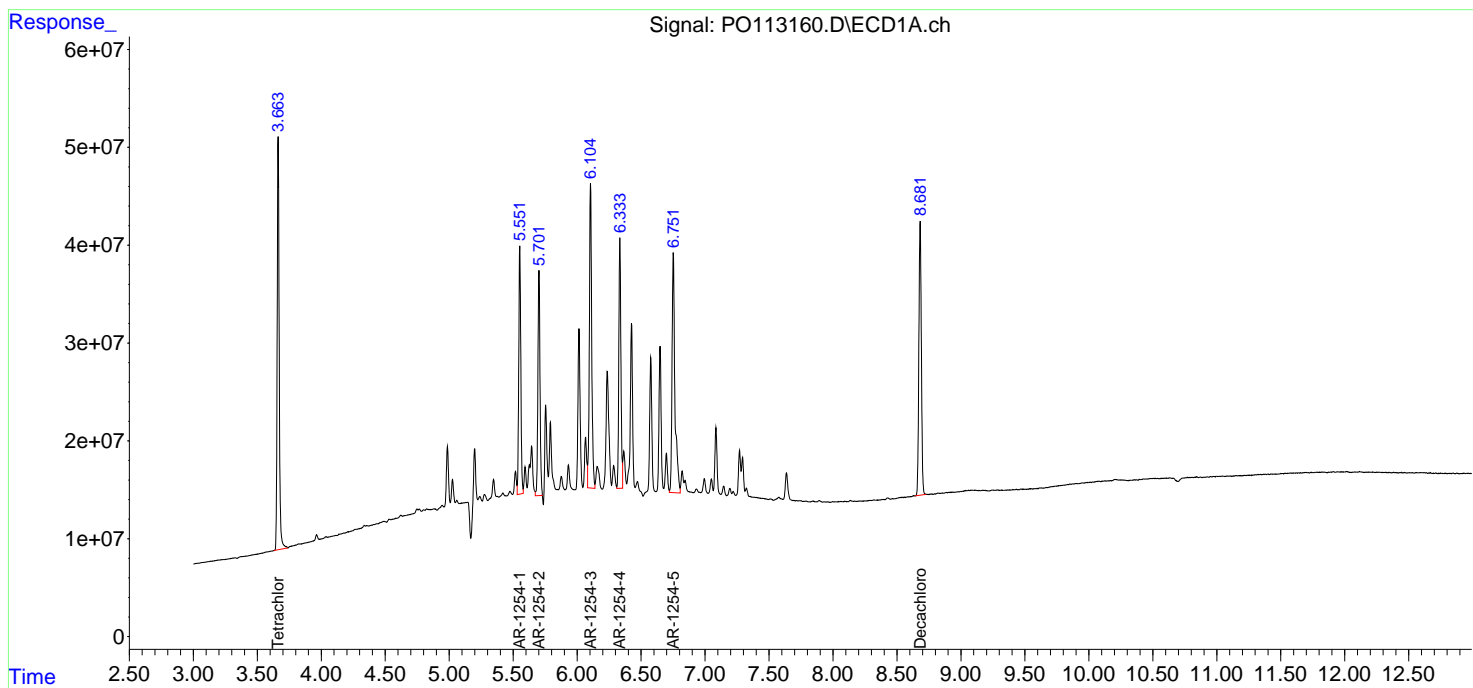
Instrument :  
 ECD\_O  
 ClientSampleId :  
 AR1254CCC500

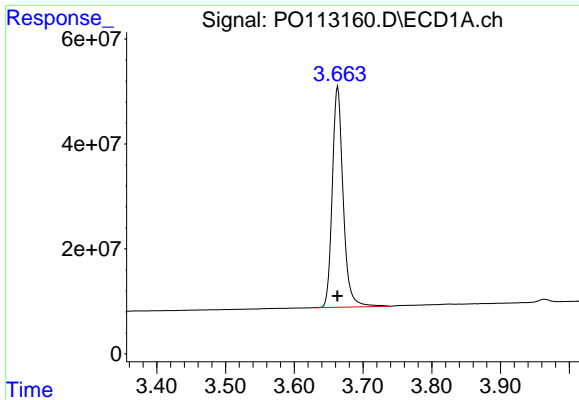
Manual Integrations  
 APPROVED

Reviewed By :Yogesh Patel 08/22/2025  
 Supervised By :mohammad ahmed 08/25/2025

Integration File signal 1: autoint1.e  
 Integration File signal 2: autoint2.e  
 Quant Time: Aug 22 04:27:21 2025  
 Quant Method : Z:\pestpcbsrv\HPCHEM1\ECD\_O\methods\PO081825.M  
 Quant Title : GC EXTRACTABLES  
 QLast Update : Tue Aug 19 06:08:32 2025  
 Response via : Initial Calibration  
 Integrator: ChemStation

Volume Inj. : 2 µl  
 Signal #1 Phase : ZB-MR1 Signal #2 Phase: ZB-MR2  
 Signal #1 Info : 30Mx0.32mmx 0.50µ Signal #2 Info : 30M x 0.32mm x 0.25µm



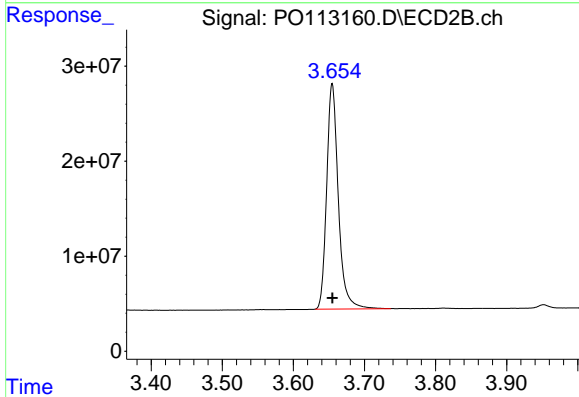


#1 Tetrachloro-m-xylene  
 R.T.: 3.663 min  
 Delta R.T.: 0.000 min  
 Response: 463639705  
 Conc: 56.63 ng/ml

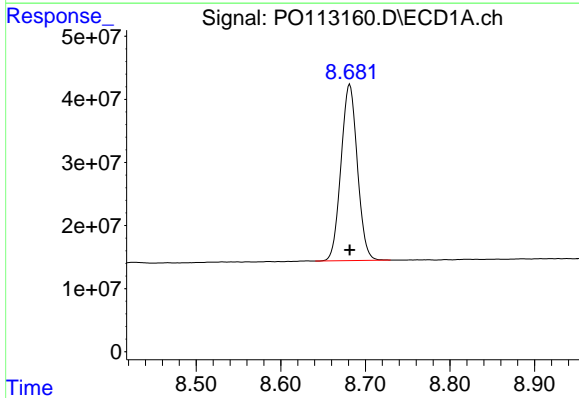
Instrument :  
 ECD\_O  
 ClientSampleId :  
 AR1254CCC500

Manual Integrations  
 APPROVED

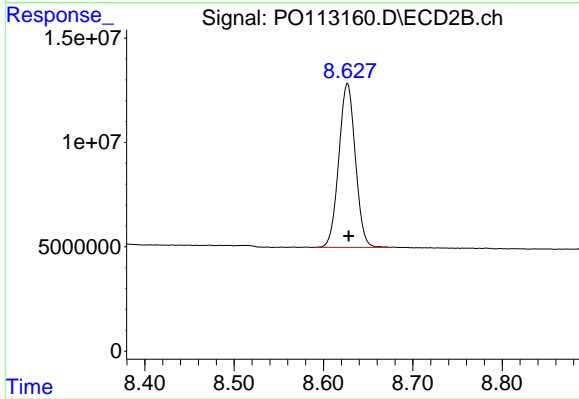
Reviewed By :Yogesh Patel 08/22/2025  
 Supervised By :mohammad ahmed 08/25/2025



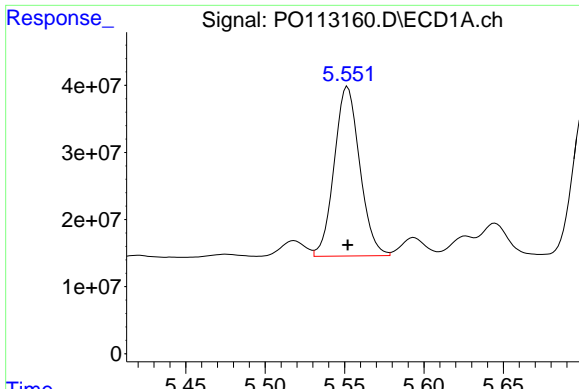
#1 Tetrachloro-m-xylene  
 R.T.: 3.655 min  
 Delta R.T.: 0.000 min  
 Response: 270647469  
 Conc: 53.48 ng/ml



#2 Decachlorobiphenyl  
 R.T.: 8.682 min  
 Delta R.T.: 0.000 min  
 Response: 374698720  
 Conc: 54.06 ng/ml



#2 Decachlorobiphenyl  
 R.T.: 8.627 min  
 Delta R.T.: -0.001 min  
 Response: 100936638  
 Conc: 53.27 ng/ml



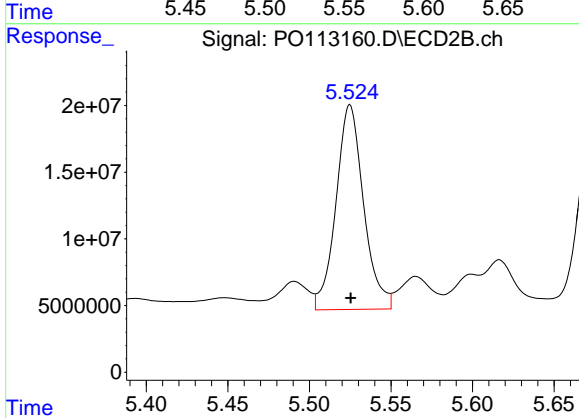
#26 AR-1254-1

R.T.: 5.551 min  
 Delta R.T.: 0.000 min  
 Response: 282441592  
 Conc: 523.06 ng/ml

Instrument :  
 ECD\_O  
 ClientSampleId :  
 AR1254CCC500

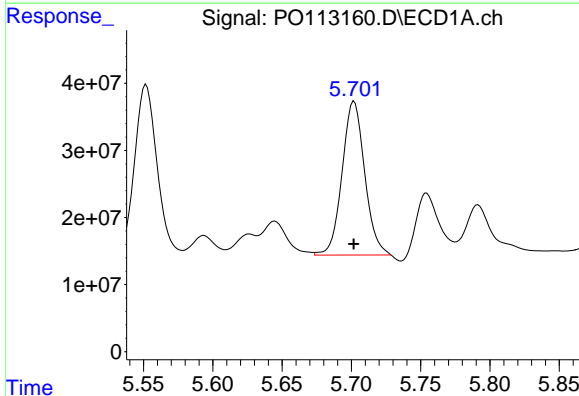
Manual Integrations  
 APPROVED

Reviewed By :Yogesh Patel 08/22/2025  
 Supervised By :mohammad ahmed 08/25/2025



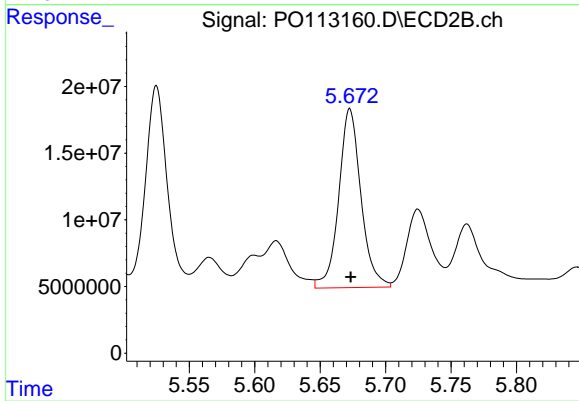
#26 AR-1254-1

R.T.: 5.525 min  
 Delta R.T.: 0.000 min  
 Response: 180893812  
 Conc: 573.62 ng/ml



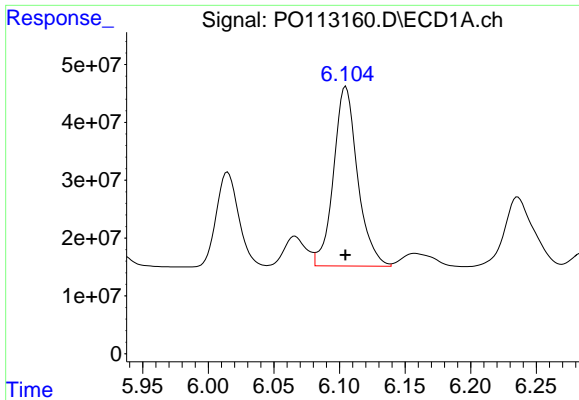
#27 AR-1254-2

R.T.: 5.701 min  
 Delta R.T.: 0.000 min  
 Response: 260083720  
 Conc: 527.07 ng/ml m



#27 AR-1254-2

R.T.: 5.673 min  
 Delta R.T.: 0.000 min  
 Response: 158664085  
 Conc: 565.97 ng/ml



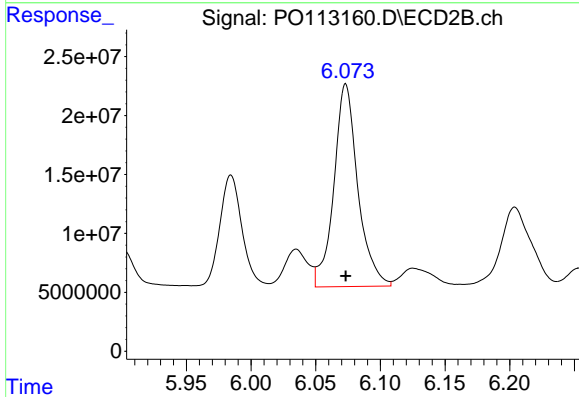
#28 AR-1254-3

R.T.: 6.105 min  
 Delta R.T.: 0.000 min  
 Response: 395832189  
 Conc: 535.72 ng/ml

Instrument :  
 ECD\_O  
 ClientSampleId :  
 AR1254CCC500

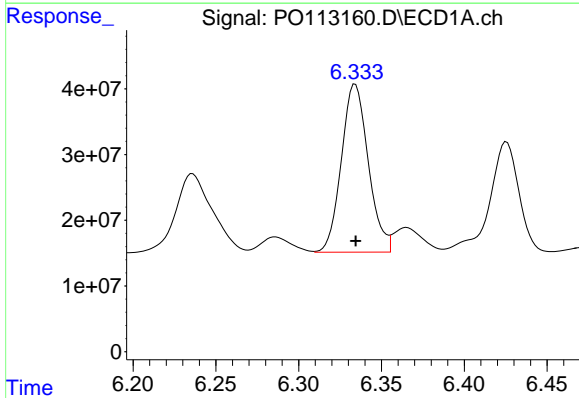
Manual Integrations  
 APPROVED

Reviewed By :Yogesh Patel 08/22/2025  
 Supervised By :mohammad ahmed 08/25/2025



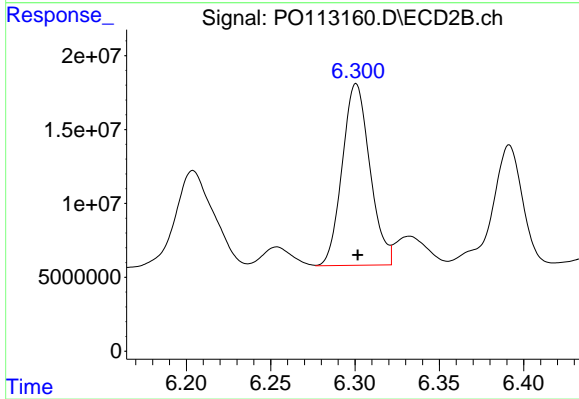
#28 AR-1254-3

R.T.: 6.073 min  
 Delta R.T.: 0.000 min  
 Response: 222034901  
 Conc: 532.56 ng/ml



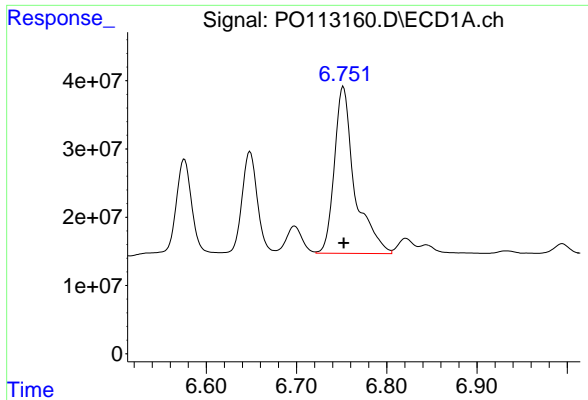
#29 AR-1254-4

R.T.: 6.334 min  
 Delta R.T.: 0.000 min  
 Response: 289426539  
 Conc: 519.62 ng/ml



#29 AR-1254-4

R.T.: 6.301 min  
 Delta R.T.: 0.000 min  
 Response: 140297362  
 Conc: 510.48 ng/ml



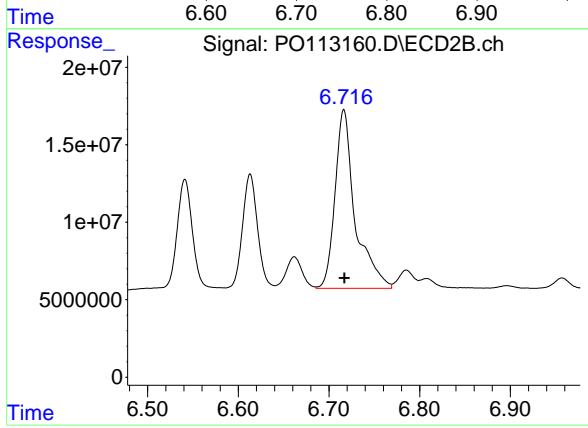
#30 AR-1254-5

R.T.: 6.752 min  
Delta R.T.: 0.000 min  
Response: 382686833  
Conc: 545.94 ng/ml

Instrument :  
ECD\_O  
ClientSampleId :  
AR1254CCC500

Manual Integrations  
APPROVED

Reviewed By :Yogesh Patel 08/22/2025  
Supervised By :mohammad ahmed 08/25/2025



#30 AR-1254-5

R.T.: 6.716 min  
Delta R.T.: 0.000 min  
Response: 177455445  
Conc: 496.39 ng/ml