

Data Path : Z:\pestpcbsrv\HPCHEM1\ECD\_0\Data\P0082224\  
 Data File : PO105729.D  
 Signal(s) : Signal #1: ECD1A.ch Signal #2: ECD2B.ch  
 Acq On : 22 Aug 2024 11:57  
 Operator : YP/AJ  
 Sample : PB162906BL  
 Misc :  
 ALS Vial : 7 Sample Multiplier: 1

Instrument :  
 ECD\_0  
 ClientSampleId :  
 PB162906BL

Integration File signal 1: autoint1.e  
 Integration File signal 2: autoint2.e  
 Quant Time: Aug 22 13:18:42 2024  
 Quant Method : Z:\pestpcbsrv\HPCHEM1\ECD\_0\methods\P0081524.M  
 Quant Title : GC EXTRACTABLES  
 QLast Update : Thu Aug 15 11:44:23 2024  
 Response via : Initial Calibration  
 Integrator: ChemStation

Volume Inj. : 2 µl  
 Signal #1 Phase : ZB-MR1 Signal #2 Phase: ZB-MR2  
 Signal #1 Info : 30Mx0.32mmx 0.50µ Signal #2 Info : 30M x 0.32mm x 0.25µm

Compound	RT#1	RT#2	Resp#1	Resp#2	ng/ml	ng/ml
-----						
System Monitoring Compounds						
1) SA Tetrachlo...	4.455	3.724	189.4E6	54046634	20.254	21.190
2) SA Decachlor...	10.196	8.762	128.3E6	48917303	22.111	24.787
Target Compounds						
3) L1 AR-1016-1	5.610	4.814	290629	41532	0.934	0.476 #
4) L1 AR-1016-2	5.635	4.841	92680	117122	0.214	0.998 #
5) L1 AR-1016-3	5.698	5.023	68933	26696	0.259	0.432 #
6) L1 AR-1016-4	5.804	5.058	120058	83556	0.545	1.763 #
7) L1 AR-1016-5	6.105	5.326f	185289	542528	0.887	8.543 #
8) L2 AR-1221-1	4.670	3.935	47710	60335	0.421	2.061 #
9) L2 AR-1221-2	4.730	4.026	135444	761504	1.528	35.003 #
10) L2 AR-1221-3	4.824	4.109	131019	16613	0.513	0.242 #
11) L3 AR-1232-1	4.824	4.109	131019	16613	0.628	0.300 #
12) L3 AR-1232-2	5.348	4.841	182062	117122	1.693	2.253 #
13) L3 AR-1232-3	5.635	5.023	92680	26696	0.471	0.973 #
14) L3 AR-1232-4	5.804	5.092	120058	55908	1.235	2.245 #
15) L3 AR-1232-5	5.902	5.326f	149298	542528	2.052	19.186 #
16) L4 AR-1242-1	5.610	4.814	290629	41532	1.167	0.598 #
17) L4 AR-1242-2	5.635	4.841	92680	117122	0.272	1.276 #
18) L4 AR-1242-3	5.698	5.023	68933	26696	0.329	0.546 #
19) L4 AR-1242-4	5.804	5.092	120058	55908	0.686	1.133 #
20) L4 AR-1242-5	6.527	5.621	277904	42154	1.543	0.673 #
21) L5 AR-1248-1	5.610	4.814	290629	41532	1.508	0.783 #
22) L5 AR-1248-2	5.877	5.058	56020	83556	0.213	1.198 #
23) L5 AR-1248-3	6.105	5.092	185289	55908	0.632	0.753
24) L5 AR-1248-4	6.516	5.326f	293799	542528	0.906	6.099 #
25) L5 AR-1248-5	6.527	5.677	277904	66503	0.890	0.759
26) L6 AR-1254-1	6.468	5.621	690818	42154	2.183	0.335 #
27) L6 AR-1254-2	6.685	5.773	146810	107676	0.312	0.966 #
28) L6 AR-1254-3	7.052	6.165	1136732	198127	2.372	1.104 #
29) L6 AR-1254-4	7.345	6.420	769201	193010	2.185	1.738
30) L6 AR-1254-5	7.759	6.834	49132	375917	0.129	2.338 #
31) L7 AR-1260-1	7.237	6.308	891958	63809	2.414	0.539 #
32) L7 AR-1260-2	7.479	6.510	1962206	136973	4.542	0.934 #
33) L7 AR-1260-3	7.835	6.648	657919	5135806	2.429	33.434 #
34) L7 AR-1260-4	8.059	7.140	109814	79292	0.345	0.808 #
35) L7 AR-1260-5	8.390	7.390	490871	398316	0.788	1.646 #
36) L8 AR-1262-1	7.759	6.834	49132	375917	0.170	4.609 #
37) L8 AR-1262-2	8.390	7.140	490871	79292	0.639	0.563
38) L8 AR-1262-3	8.694	7.659	128865	175539	0.256	1.630 #
39) L8 AR-1262-4	8.776	7.730	107505	80261	0.290	0.386 #
40) L8 AR-1262-5	9.446	8.199	104800	1790	0.402	0.019 #
41) L9 AR-1268-1	8.694	7.659	128865	175539	0.153	0.563 #

Data Path : Z:\pestpcbsrv\HPCHEM1\ECD\_0\Data\P0082224\  
 Data File : P0105729.D  
 Signal(s) : Signal #1: ECD1A.ch Signal #2: ECD2B.ch  
 Acq On : 22 Aug 2024 11:57  
 Operator : YP/AJ  
 Sample : PB162906BL  
 Misc :  
 ALS Vial : 7 Sample Multiplier: 1

**Instrument :**  
 ECD\_0  
**ClientSampleId :**  
 PB162906BL

Integration File signal 1: autoint1.e  
 Integration File signal 2: autoint2.e  
 Quant Time: Aug 22 13:18:42 2024  
 Quant Method : Z:\pestpcbsrv\HPCHEM1\ECD\_0\methods\P0081524.M  
 Quant Title : GC EXTRACTABLES  
 QLast Update : Thu Aug 15 11:44:23 2024  
 Response via : Initial Calibration  
 Integrator: ChemStation

Volume Inj. : 2 µl  
 Signal #1 Phase : ZB-MR1 Signal #2 Phase: ZB-MR2  
 Signal #1 Info : 30Mx0.32mmx 0.50µ Signal #2 Info : 30M x 0.32mm x 0.25µm

	Compound	RT#1	RT#2	Resp#1	Resp#2	ng/ml	ng/ml
42)	L9 AR-1268-2	8.776	7.730	107505	80261	0.143	0.285 #
43)	L9 AR-1268-3	9.018	7.912	217690	151223	0.343	0.649 #
44)	L9 AR-1268-4	9.446	8.199	104800	1790	0.381	0.018 #
45)	L9 AR-1268-5	9.850	8.499	1347973	351240	0.645	0.465 #

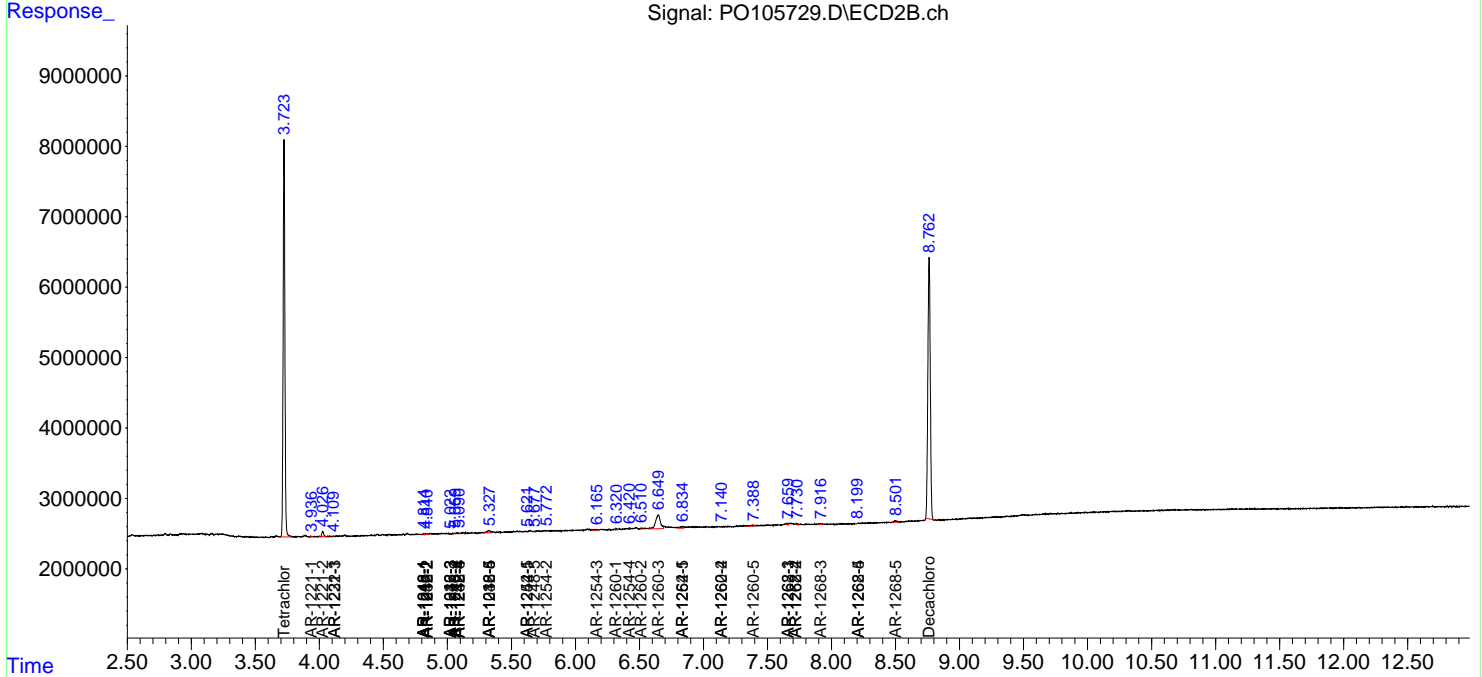
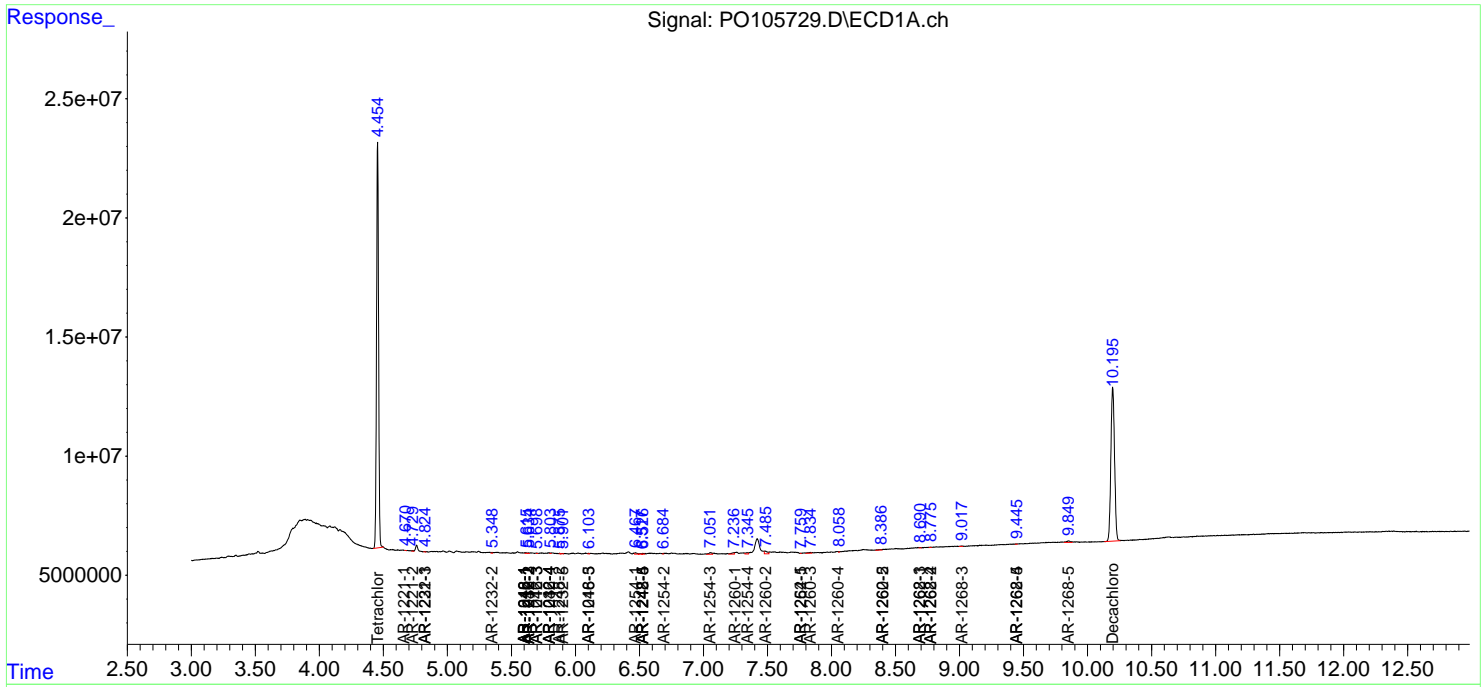
(f)=RT Delta > 1/2 Window (#)=Amounts differ by > 25% (m)=manual int.

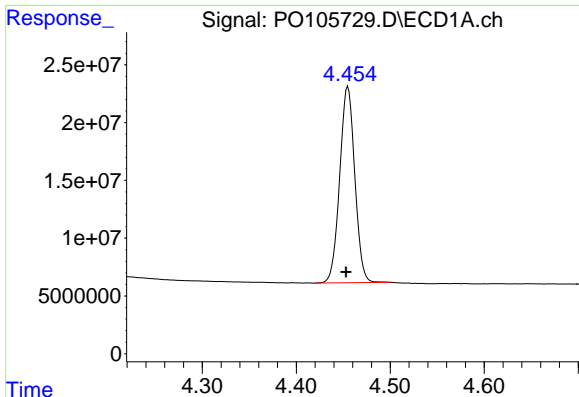
Data Path : Z:\pestpcbsrv\HPCHEM1\ECD\_O\Data\P0082224\  
 Data File : P0105729.D  
 Signal(s) : Signal #1: ECD1A.ch Signal #2: ECD2B.ch  
 Acq On : 22 Aug 2024 11:57  
 Operator : YP/AJ  
 Sample : PB162906BL  
 Misc :  
 ALS Vial : 7 Sample Multiplier: 1

Instrument :  
 ECD\_O  
 ClientSampleId :  
 PB162906BL

Integration File signal 1: autoint1.e  
 Integration File signal 2: autoint2.e  
 Quant Time: Aug 22 13:18:42 2024  
 Quant Method : Z:\pestpcbsrv\HPCHEM1\ECD\_O\methods\P0081524.M  
 Quant Title : GC EXTRACTABLES  
 QLast Update : Thu Aug 15 11:44:23 2024  
 Response via : Initial Calibration  
 Integrator: ChemStation

Volume Inj. : 2 µl  
 Signal #1 Phase : ZB-MR1 Signal #2 Phase: ZB-MR2  
 Signal #1 Info : 30Mx0.32mmx 0.50µ Signal #2 Info : 30M x 0.32mm x 0.25µm

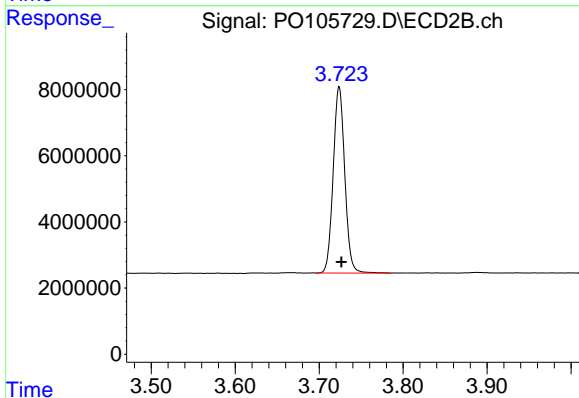




#1 Tetrachloro-m-xylene

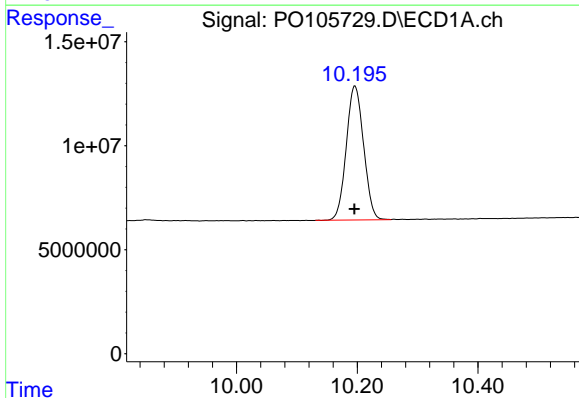
R.T.: 4.455 min  
 Delta R.T.: 0.002 min  
 Response: 189359427  
 Conc: 20.25 ng/ml

Instrument :  
 ECD\_O  
 ClientSampleId :  
 PB162906BL



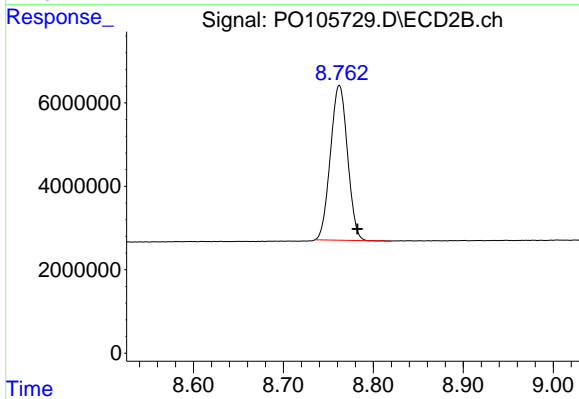
#1 Tetrachloro-m-xylene

R.T.: 3.724 min  
 Delta R.T.: -0.003 min  
 Response: 54046634  
 Conc: 21.19 ng/ml



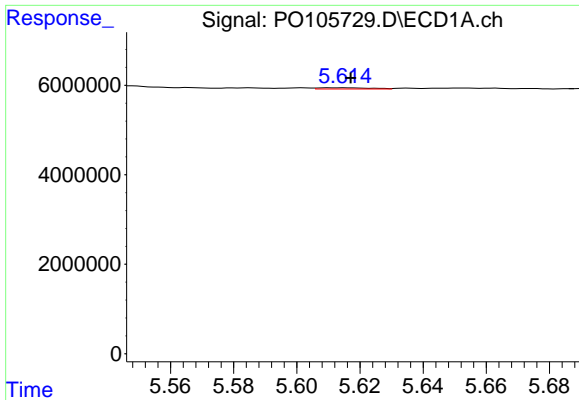
#2 Decachlorobiphenyl

R.T.: 10.196 min  
 Delta R.T.: 0.000 min  
 Response: 128349000  
 Conc: 22.11 ng/ml



#2 Decachlorobiphenyl

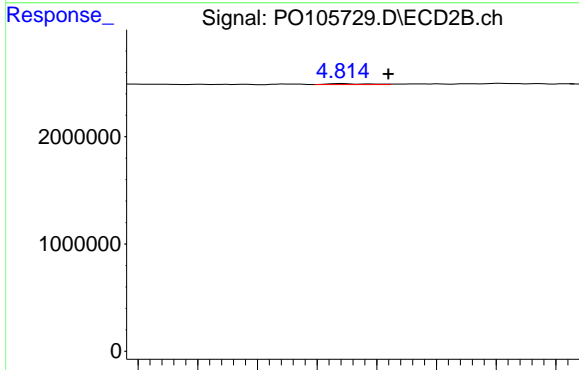
R.T.: 8.762 min  
 Delta R.T.: -0.020 min  
 Response: 48917303  
 Conc: 24.79 ng/ml



#3 AR-1016-1

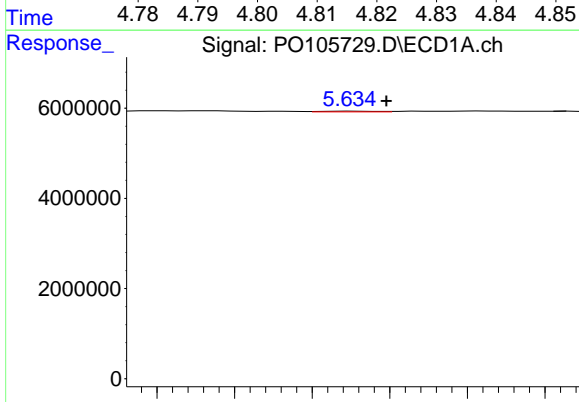
R.T.: 5.610 min  
 Delta R.T.: -0.007 min  
 Response: 290629  
 Conc: 0.93 ng/ml

Instrument :  
 ECD\_O  
 ClientSampleId :  
 PB162906BL



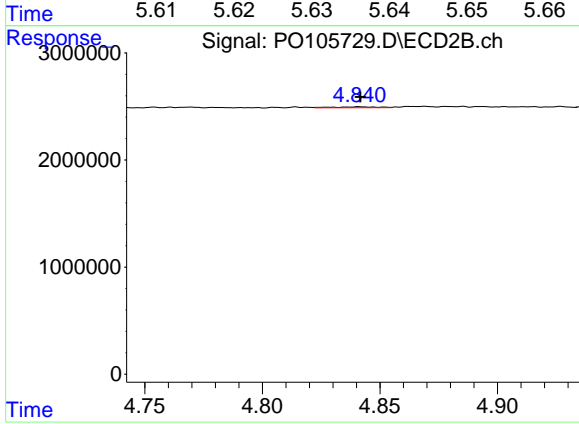
#3 AR-1016-1

R.T.: 4.814 min  
 Delta R.T.: -0.008 min  
 Response: 41532  
 Conc: 0.48 ng/ml



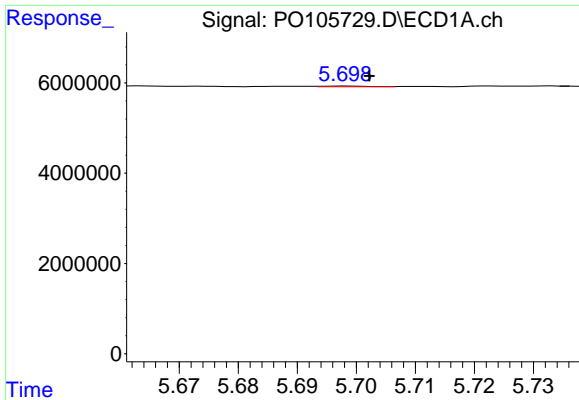
#4 AR-1016-2

R.T.: 5.635 min  
 Delta R.T.: -0.004 min  
 Response: 92680  
 Conc: 0.21 ng/ml



#4 AR-1016-2

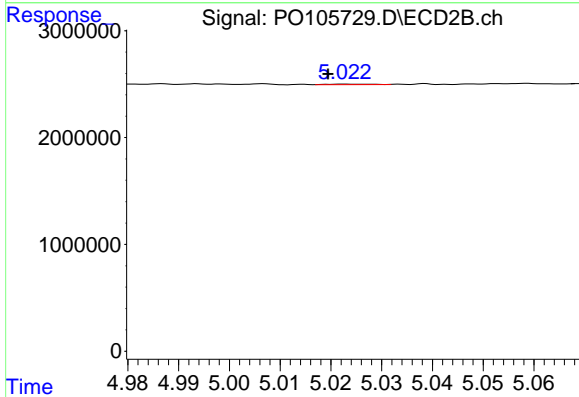
R.T.: 4.841 min  
 Delta R.T.: 0.000 min  
 Response: 117122  
 Conc: 1.00 ng/ml



#5 AR-1016-3

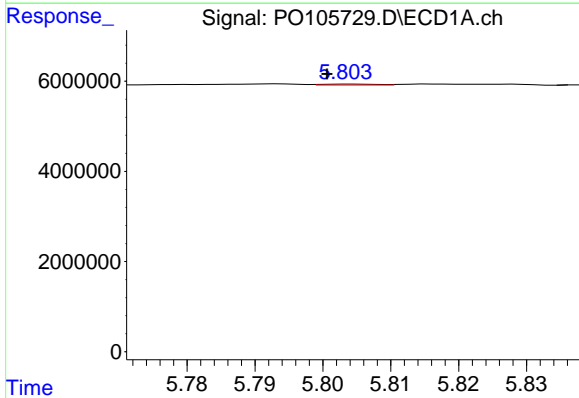
R.T.: 5.698 min  
 Delta R.T.: -0.004 min  
 Response: 68933  
 Conc: 0.26 ng/ml

Instrument :  
 ECD\_O  
 ClientSampleId :  
 PB162906BL



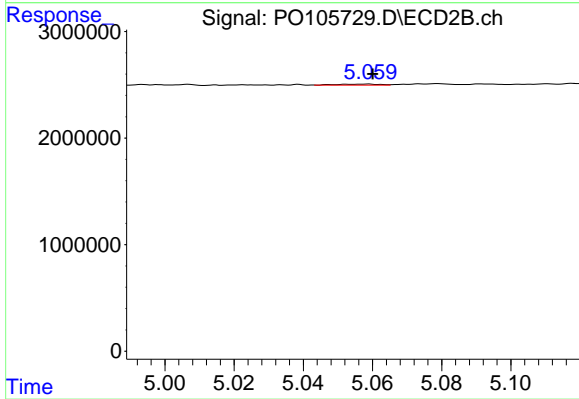
#5 AR-1016-3

R.T.: 5.023 min  
 Delta R.T.: 0.004 min  
 Response: 26696  
 Conc: 0.43 ng/ml



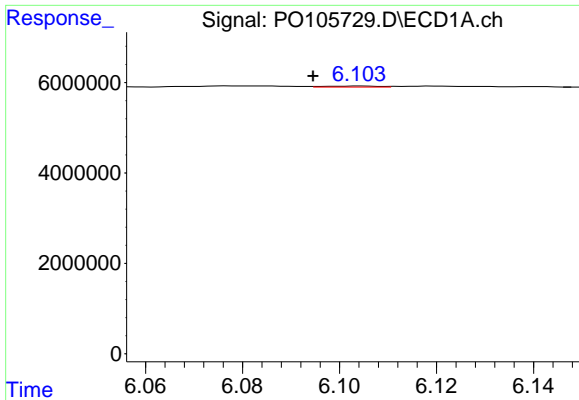
#6 AR-1016-4

R.T.: 5.804 min  
 Delta R.T.: 0.003 min  
 Response: 120058  
 Conc: 0.55 ng/ml



#6 AR-1016-4

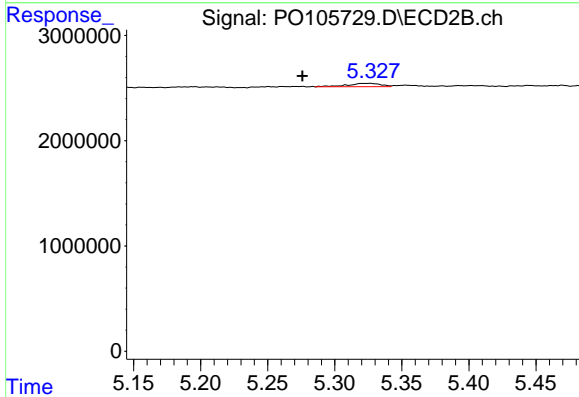
R.T.: 5.058 min  
 Delta R.T.: -0.002 min  
 Response: 83556  
 Conc: 1.76 ng/ml



#7 AR-1016-5

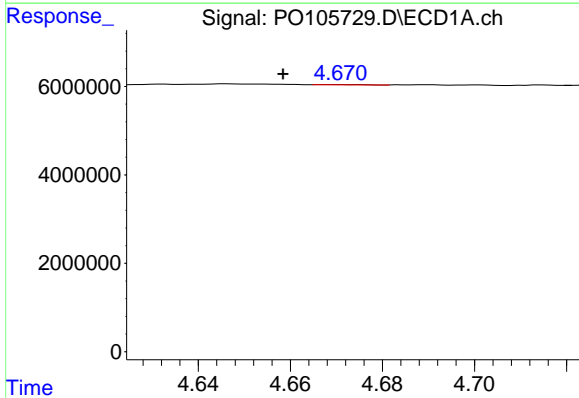
R.T.: 6.105 min  
 Delta R.T.: 0.010 min  
 Response: 185289  
 Conc: 0.89 ng/ml

Instrument :  
 ECD\_O  
 ClientSampleId :  
 PB162906BL



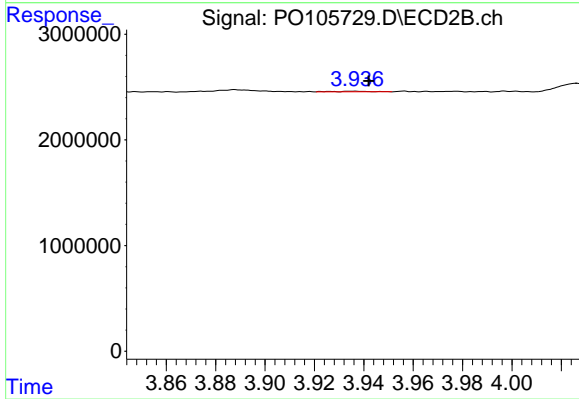
#7 AR-1016-5

R.T.: 5.326 min  
 Delta R.T.: 0.050 min  
 Response: 542528  
 Conc: 8.54 ng/ml



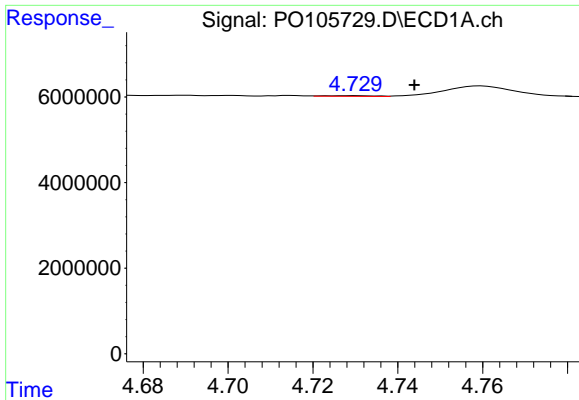
#8 AR-1221-1

R.T.: 4.670 min  
 Delta R.T.: 0.012 min  
 Response: 47710  
 Conc: 0.42 ng/ml



#8 AR-1221-1

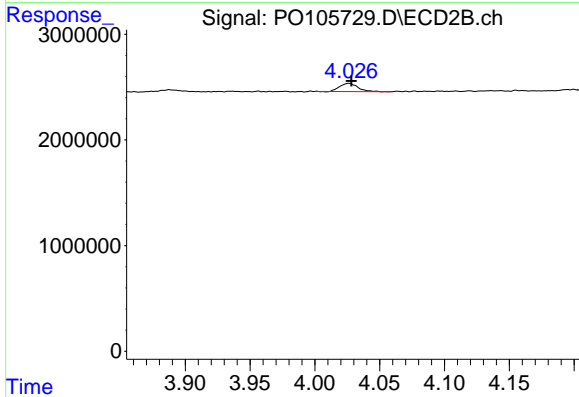
R.T.: 3.935 min  
 Delta R.T.: -0.007 min  
 Response: 60335  
 Conc: 2.06 ng/ml



#9 AR-1221-2

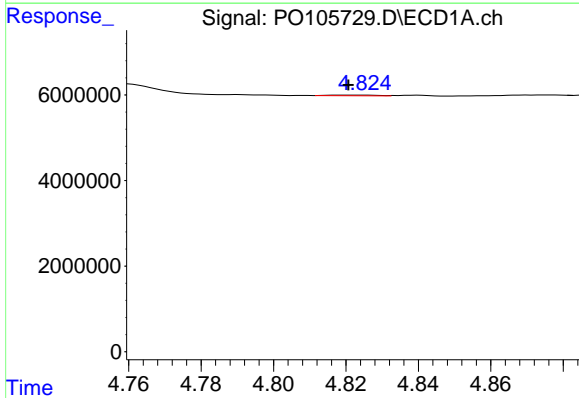
R.T.: 4.730 min  
 Delta R.T.: -0.014 min  
 Response: 135444  
 Conc: 1.53 ng/ml

Instrument :  
 ECD\_O  
 ClientSampleId :  
 PB162906BL



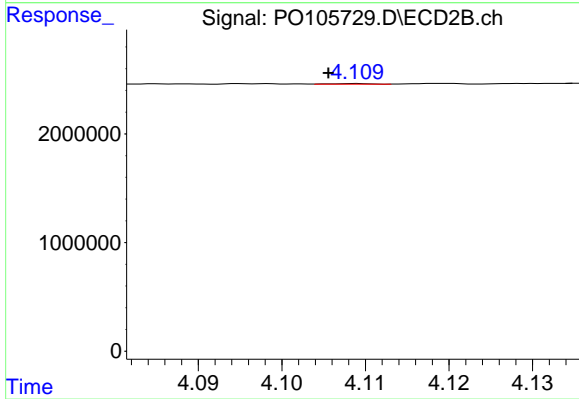
#9 AR-1221-2

R.T.: 4.026 min  
 Delta R.T.: -0.002 min  
 Response: 761504  
 Conc: 35.00 ng/ml



#10 AR-1221-3

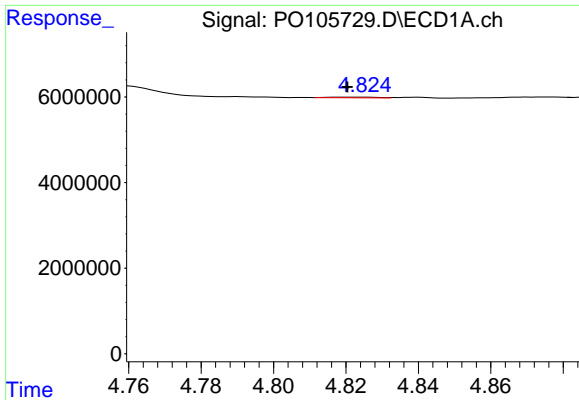
R.T.: 4.824 min  
 Delta R.T.: 0.004 min  
 Response: 131019  
 Conc: 0.51 ng/ml



#10 AR-1221-3

R.T.: 4.109 min  
 Delta R.T.: 0.003 min  
 Response: 16613  
 Conc: 0.24 ng/ml

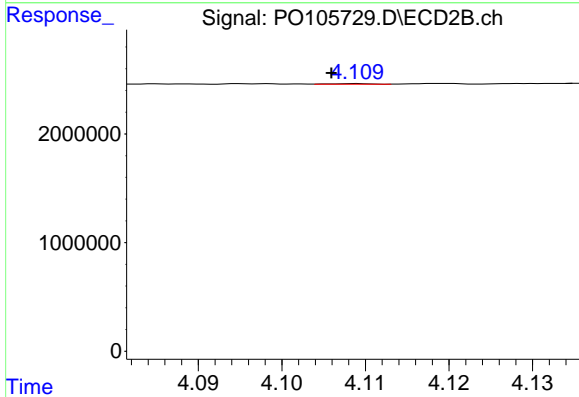




#11 AR-1232-1

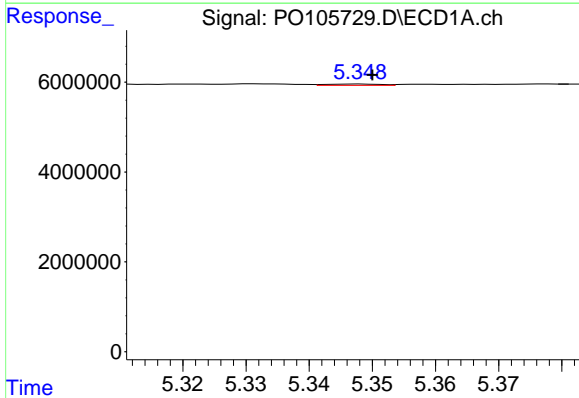
R.T.: 4.824 min  
 Delta R.T.: 0.004 min  
 Response: 131019  
 Conc: 0.63 ng/ml

Instrument :  
 ECD\_O  
 ClientSampleId :  
 PB162906BL



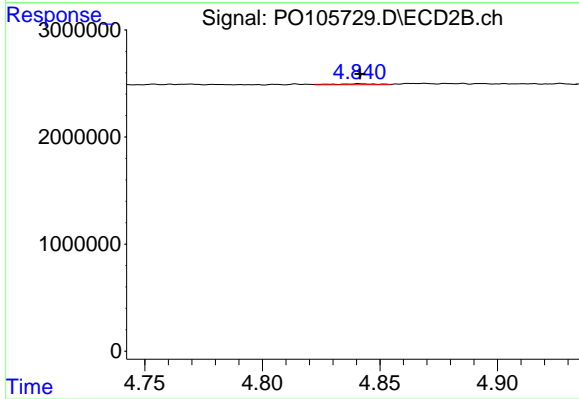
#11 AR-1232-1

R.T.: 4.109 min  
 Delta R.T.: 0.003 min  
 Response: 16613  
 Conc: 0.30 ng/ml



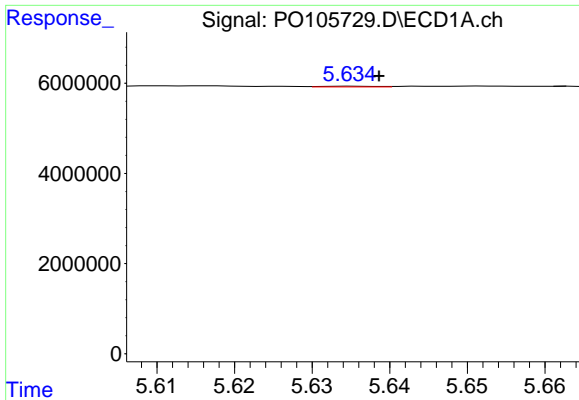
#12 AR-1232-2

R.T.: 5.348 min  
 Delta R.T.: -0.002 min  
 Response: 182062  
 Conc: 1.69 ng/ml



#12 AR-1232-2

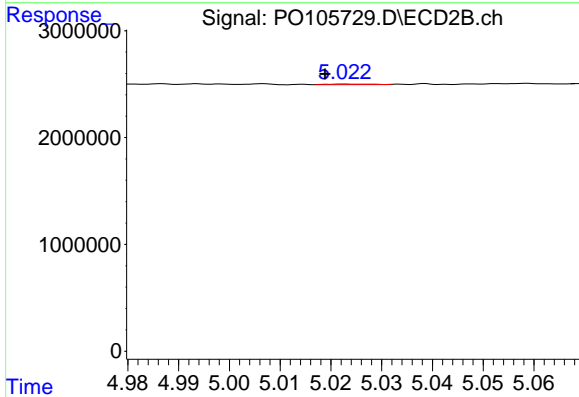
R.T.: 4.841 min  
 Delta R.T.: 0.000 min  
 Response: 117122  
 Conc: 2.25 ng/ml



#13 AR-1232-3

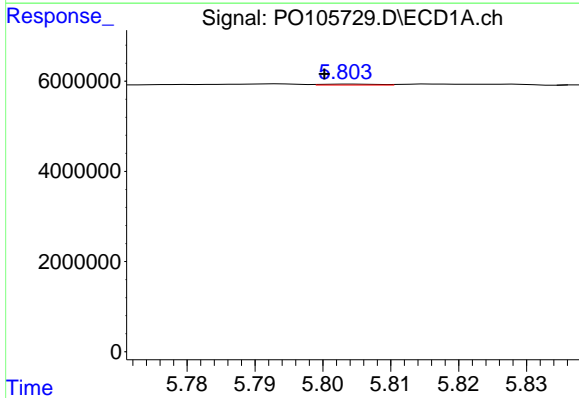
R.T.: 5.635 min  
 Delta R.T.: -0.003 min  
 Response: 92680  
 Conc: 0.47 ng/ml

Instrument :  
 ECD\_O  
 ClientSampleId :  
 PB162906BL



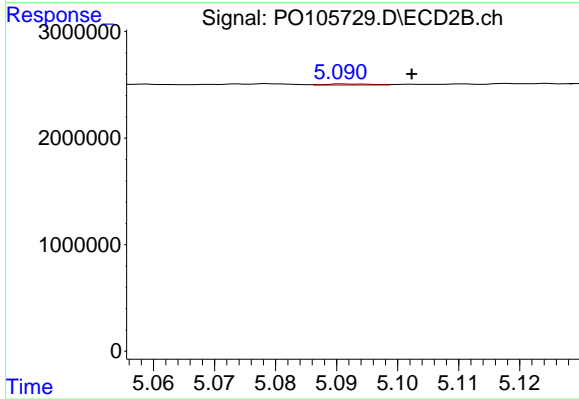
#13 AR-1232-3

R.T.: 5.023 min  
 Delta R.T.: 0.004 min  
 Response: 26696  
 Conc: 0.97 ng/ml



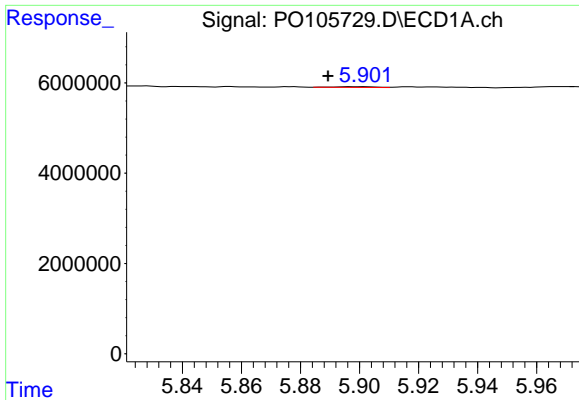
#14 AR-1232-4

R.T.: 5.804 min  
 Delta R.T.: 0.004 min  
 Response: 120058  
 Conc: 1.23 ng/ml



#14 AR-1232-4

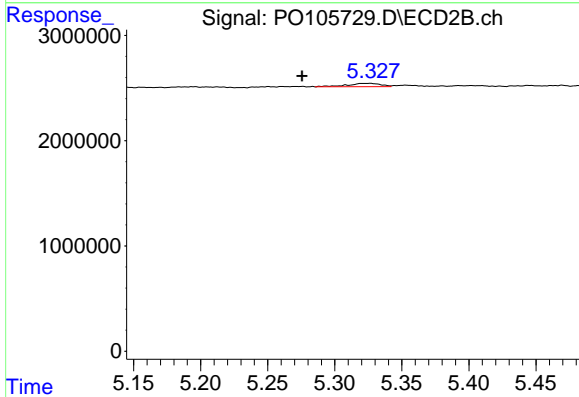
R.T.: 5.092 min  
 Delta R.T.: -0.010 min  
 Response: 55908  
 Conc: 2.25 ng/ml



#15 AR-1232-5

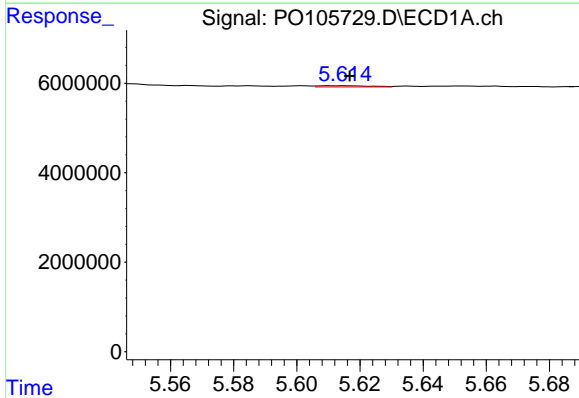
R.T.: 5.902 min  
 Delta R.T.: 0.013 min  
 Response: 149298  
 Conc: 2.05 ng/ml

Instrument :  
 ECD\_O  
 ClientSampleId :  
 PB162906BL



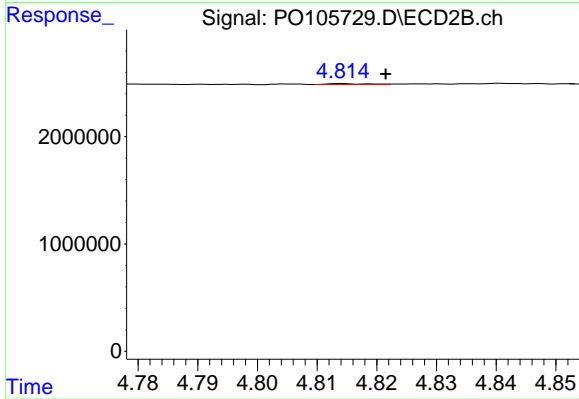
#15 AR-1232-5

R.T.: 5.326 min  
 Delta R.T.: 0.051 min  
 Response: 542528  
 Conc: 19.19 ng/ml



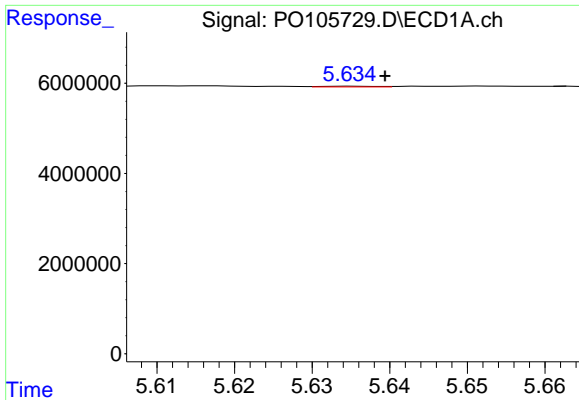
#16 AR-1242-1

R.T.: 5.610 min  
 Delta R.T.: -0.006 min  
 Response: 290629  
 Conc: 1.17 ng/ml



#16 AR-1242-1

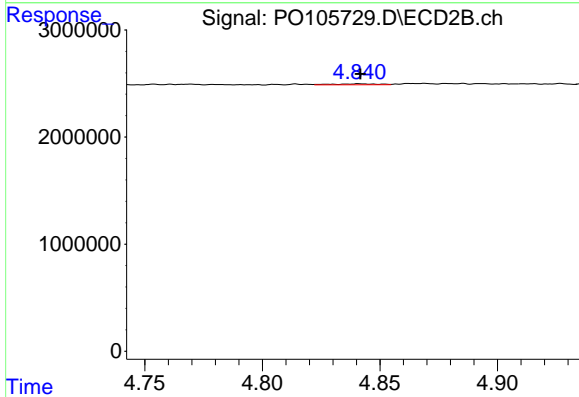
R.T.: 4.814 min  
 Delta R.T.: -0.007 min  
 Response: 41532  
 Conc: 0.60 ng/ml



#17 AR-1242-2

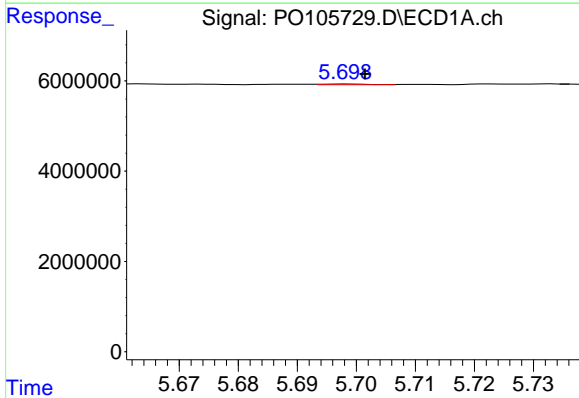
R.T.: 5.635 min  
 Delta R.T.: -0.004 min  
 Response: 92680  
 Conc: 0.27 ng/ml

Instrument :  
 ECD\_O  
 ClientSampleId :  
 PB162906BL



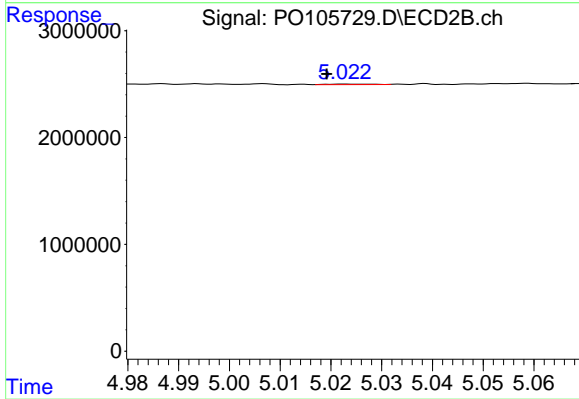
#17 AR-1242-2

R.T.: 4.841 min  
 Delta R.T.: 0.000 min  
 Response: 117122  
 Conc: 1.28 ng/ml



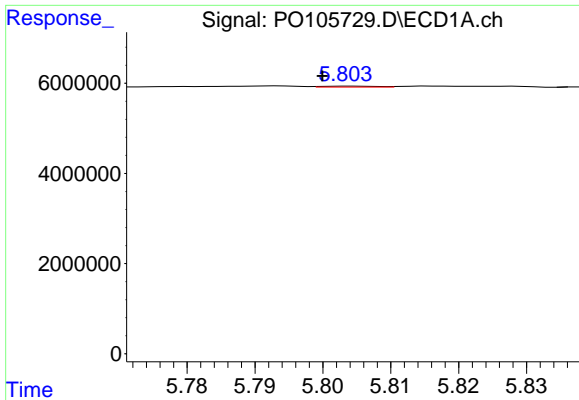
#18 AR-1242-3

R.T.: 5.698 min  
 Delta R.T.: -0.003 min  
 Response: 68933  
 Conc: 0.33 ng/ml



#18 AR-1242-3

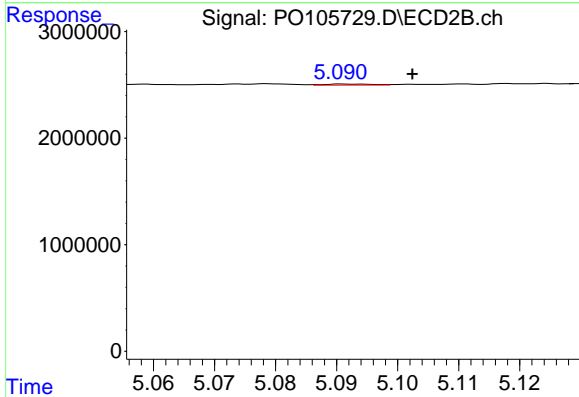
R.T.: 5.023 min  
 Delta R.T.: 0.004 min  
 Response: 26696  
 Conc: 0.55 ng/ml



#19 AR-1242-4

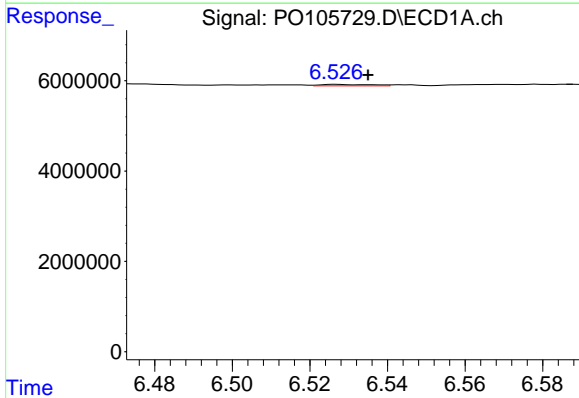
R.T.: 5.804 min  
 Delta R.T.: 0.004 min  
 Response: 120058  
 Conc: 0.69 ng/ml

Instrument :  
 ECD\_O  
 ClientSampleId :  
 PB162906BL



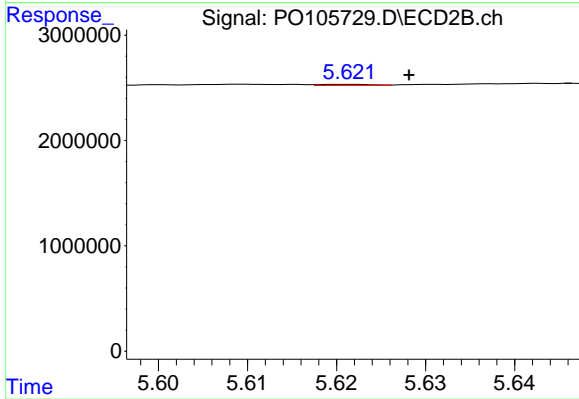
#19 AR-1242-4

R.T.: 5.092 min  
 Delta R.T.: -0.010 min  
 Response: 55908  
 Conc: 1.13 ng/ml



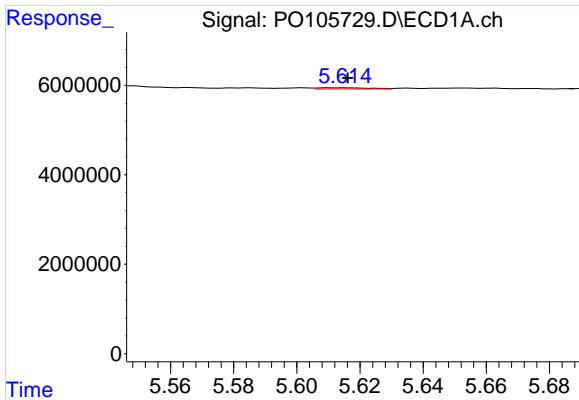
#20 AR-1242-5

R.T.: 6.527 min  
 Delta R.T.: -0.008 min  
 Response: 277904  
 Conc: 1.54 ng/ml



#20 AR-1242-5

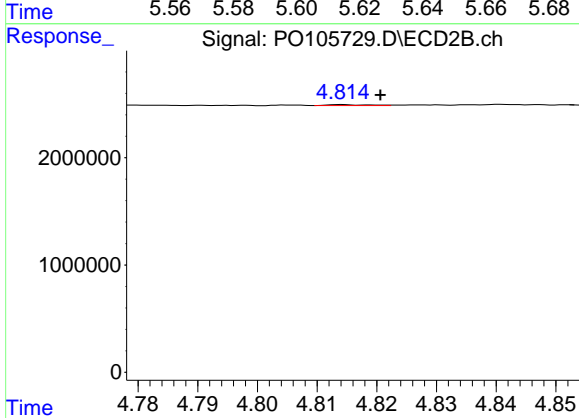
R.T.: 5.621 min  
 Delta R.T.: -0.007 min  
 Response: 42154  
 Conc: 0.67 ng/ml



#21 AR-1248-1

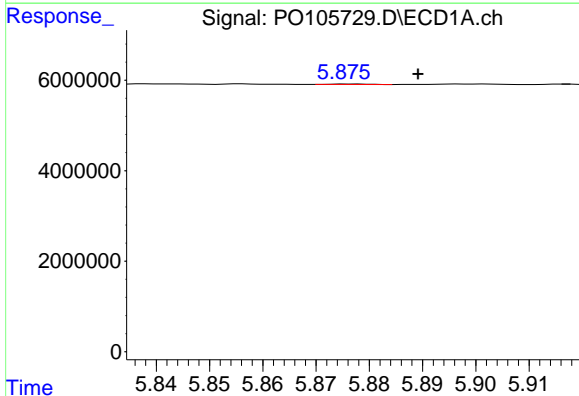
R.T.: 5.610 min  
 Delta R.T.: -0.006 min  
 Response: 290629  
 Conc: 1.51 ng/ml

Instrument :  
 ECD\_O  
 ClientSampleId :  
 PB162906BL



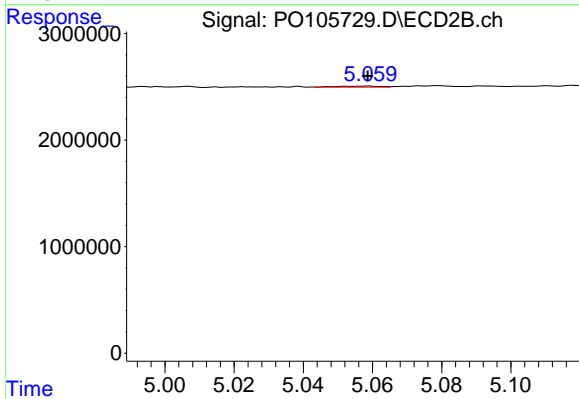
#21 AR-1248-1

R.T.: 4.814 min  
 Delta R.T.: -0.006 min  
 Response: 41532  
 Conc: 0.78 ng/ml



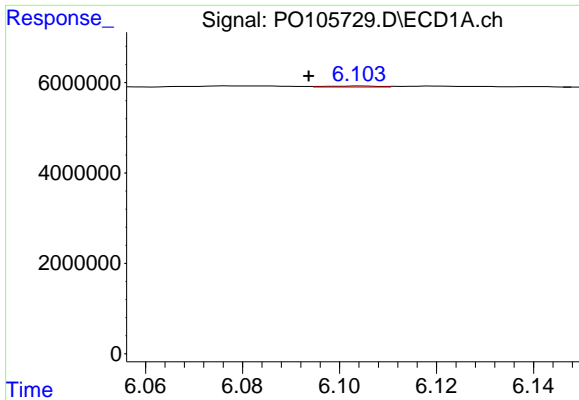
#22 AR-1248-2

R.T.: 5.877 min  
 Delta R.T.: -0.013 min  
 Response: 56020  
 Conc: 0.21 ng/ml



#22 AR-1248-2

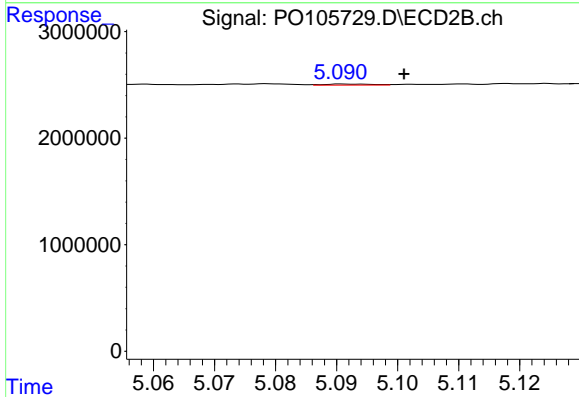
R.T.: 5.058 min  
 Delta R.T.: 0.000 min  
 Response: 83556  
 Conc: 1.20 ng/ml



#23 AR-1248-3

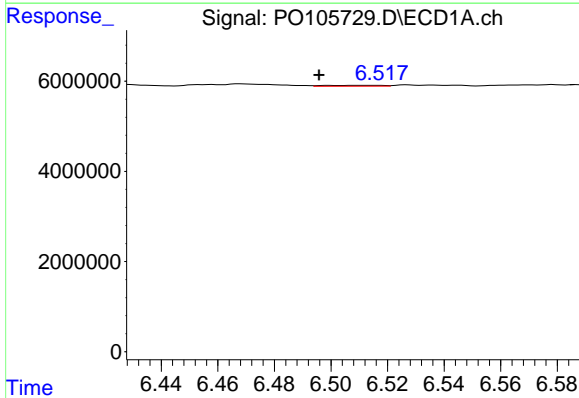
R.T.: 6.105 min  
Delta R.T.: 0.011 min  
Response: 185289  
Conc: 0.63 ng/ml

Instrument :  
ECD\_O  
ClientSampleId :  
PB162906BL



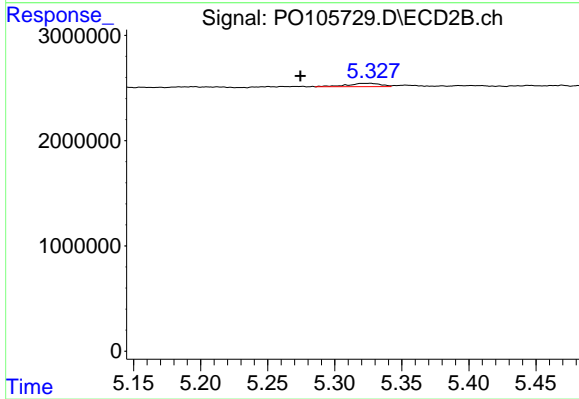
#23 AR-1248-3

R.T.: 5.092 min  
Delta R.T.: -0.009 min  
Response: 55908  
Conc: 0.75 ng/ml



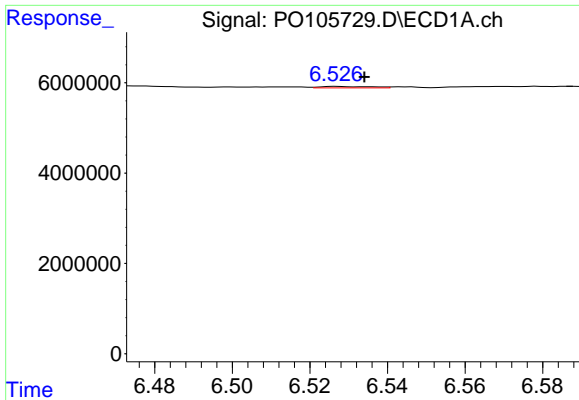
#24 AR-1248-4

R.T.: 6.516 min  
Delta R.T.: 0.020 min  
Response: 293799  
Conc: 0.91 ng/ml



#24 AR-1248-4

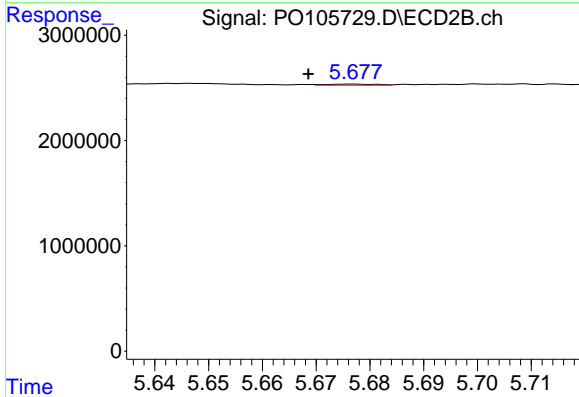
R.T.: 5.326 min  
Delta R.T.: 0.052 min  
Response: 542528  
Conc: 6.10 ng/ml



#25 AR-1248-5

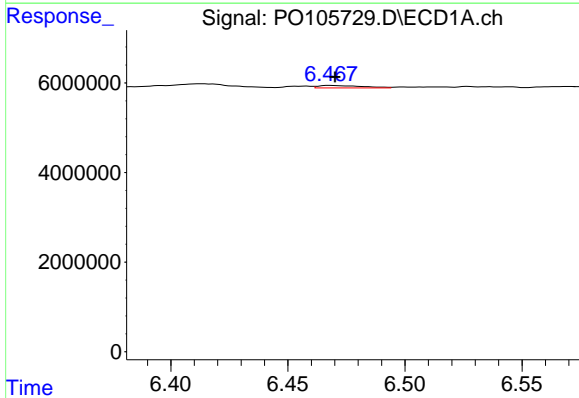
R.T.: 6.527 min  
 Delta R.T.: -0.007 min  
 Response: 277904  
 Conc: 0.89 ng/ml

Instrument :  
 ECD\_O  
 ClientSampleId :  
 PB162906BL



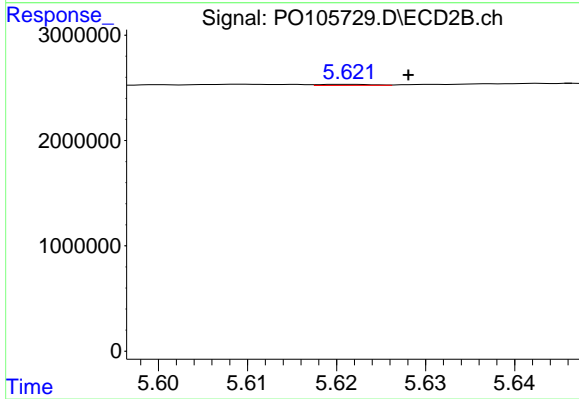
#25 AR-1248-5

R.T.: 5.677 min  
 Delta R.T.: 0.008 min  
 Response: 66503  
 Conc: 0.76 ng/ml



#26 AR-1254-1

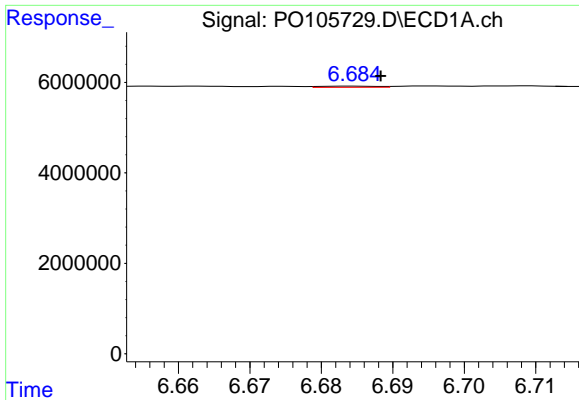
R.T.: 6.468 min  
 Delta R.T.: -0.002 min  
 Response: 690818  
 Conc: 2.18 ng/ml



#26 AR-1254-1

R.T.: 5.621 min  
 Delta R.T.: -0.007 min  
 Response: 42154  
 Conc: 0.33 ng/ml

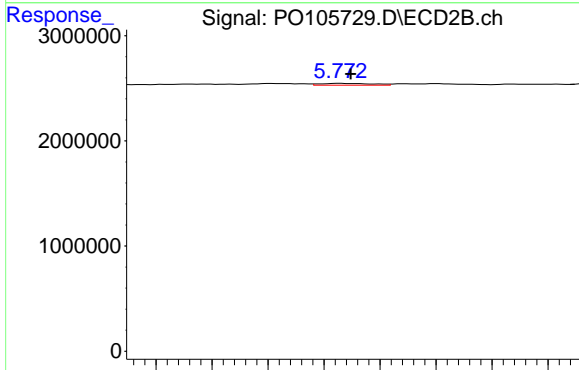




#27 AR-1254-2

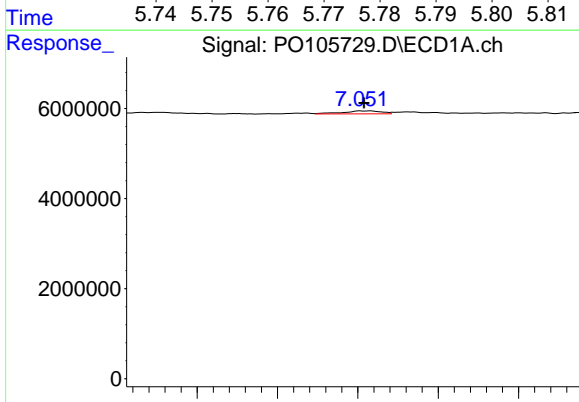
R.T.: 6.685 min  
 Delta R.T.: -0.004 min  
 Response: 146810  
 Conc: 0.31 ng/ml

Instrument :  
 ECD\_O  
 ClientSampleId :  
 PB162906BL



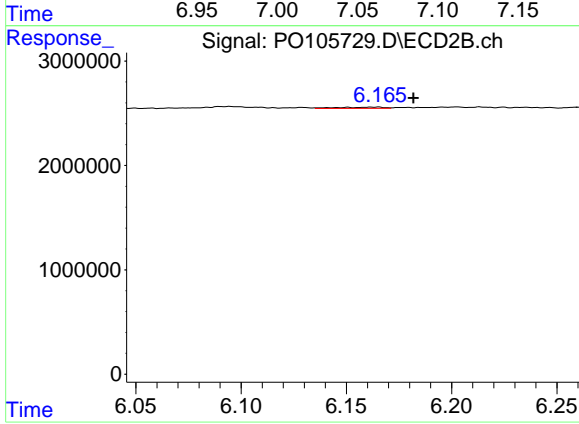
#27 AR-1254-2

R.T.: 5.773 min  
 Delta R.T.: -0.001 min  
 Response: 107676  
 Conc: 0.97 ng/ml



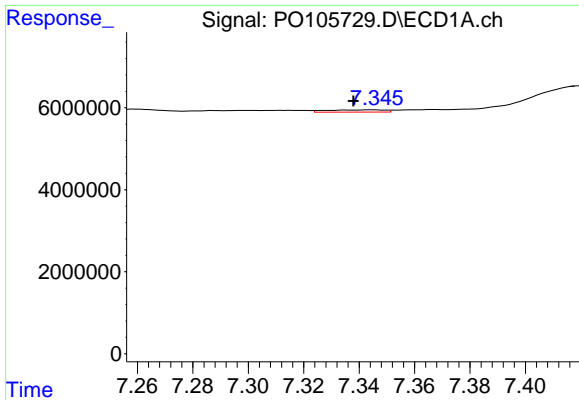
#28 AR-1254-3

R.T.: 7.052 min  
 Delta R.T.: -0.002 min  
 Response: 1136732  
 Conc: 2.37 ng/ml



#28 AR-1254-3

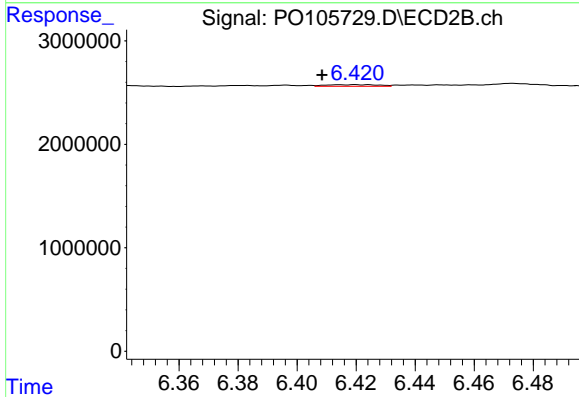
R.T.: 6.165 min  
 Delta R.T.: -0.017 min  
 Response: 198127  
 Conc: 1.10 ng/ml



#29 AR-1254-4

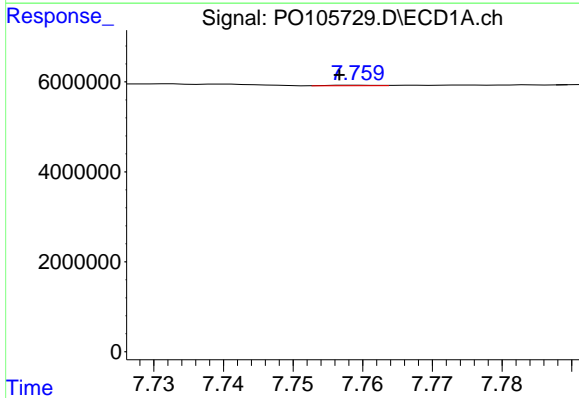
R.T.: 7.345 min  
 Delta R.T.: 0.007 min  
 Response: 769201  
 Conc: 2.18 ng/ml

Instrument :  
 ECD\_O  
 ClientSampleId :  
 PB162906BL



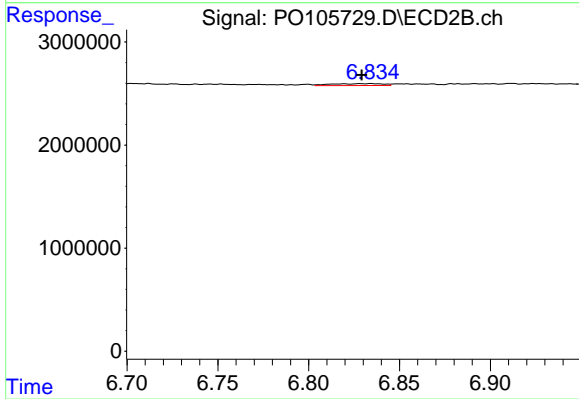
#29 AR-1254-4

R.T.: 6.420 min  
 Delta R.T.: 0.012 min  
 Response: 193010  
 Conc: 1.74 ng/ml



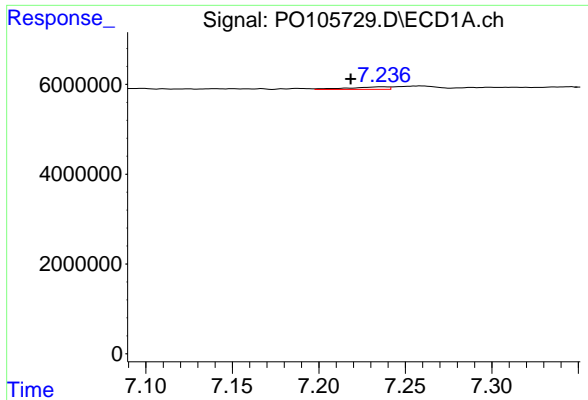
#30 AR-1254-5

R.T.: 7.759 min  
 Delta R.T.: 0.002 min  
 Response: 49132  
 Conc: 0.13 ng/ml



#30 AR-1254-5

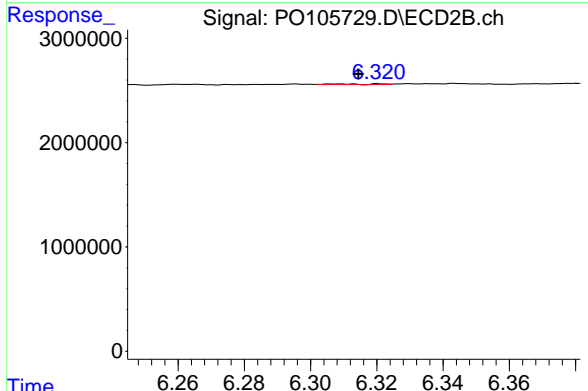
R.T.: 6.834 min  
 Delta R.T.: 0.005 min  
 Response: 375917  
 Conc: 2.34 ng/ml



#31 AR-1260-1

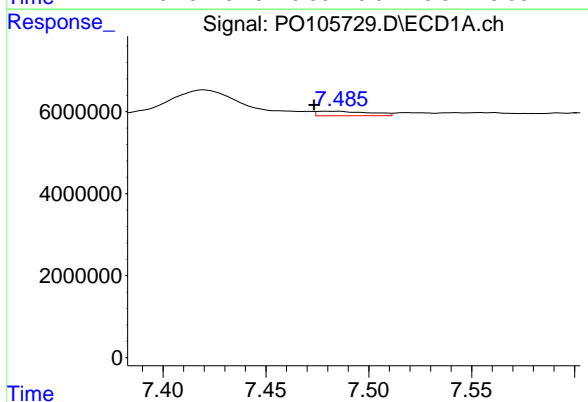
R.T.: 7.237 min  
 Delta R.T.: 0.018 min  
 Response: 891958  
 Conc: 2.41 ng/ml

Instrument :  
 ECD\_O  
 ClientSampleId :  
 PB162906BL



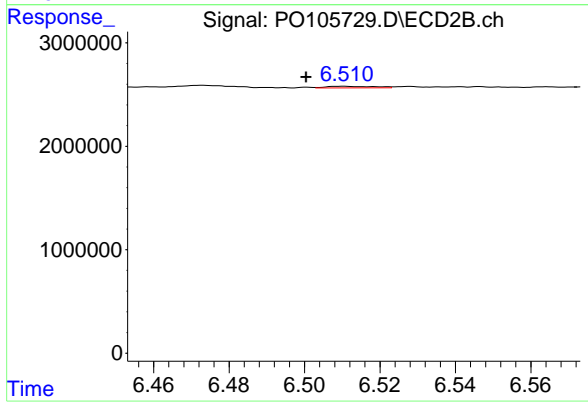
#31 AR-1260-1

R.T.: 6.308 min  
 Delta R.T.: -0.007 min  
 Response: 63809  
 Conc: 0.54 ng/ml



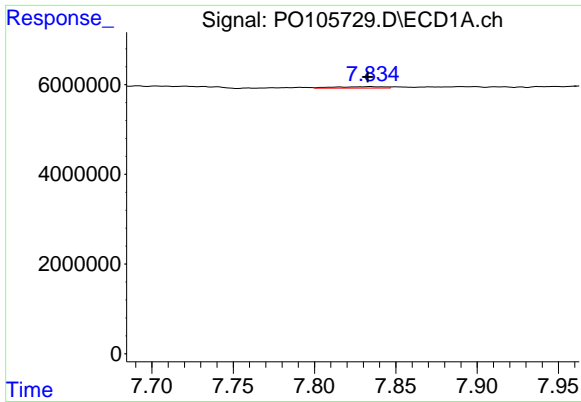
#32 AR-1260-2

R.T.: 7.479 min  
 Delta R.T.: 0.006 min  
 Response: 1962206  
 Conc: 4.54 ng/ml



#32 AR-1260-2

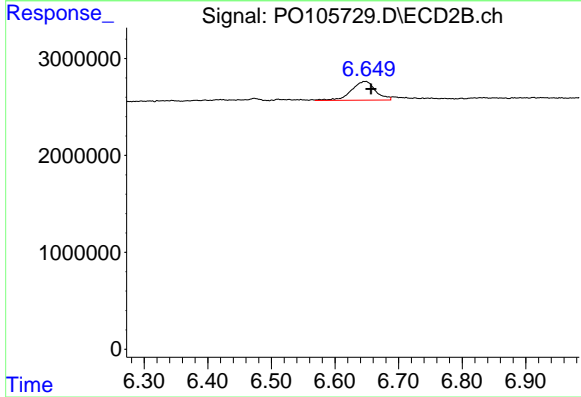
R.T.: 6.510 min  
 Delta R.T.: 0.010 min  
 Response: 136973  
 Conc: 0.93 ng/ml



#33 AR-1260-3

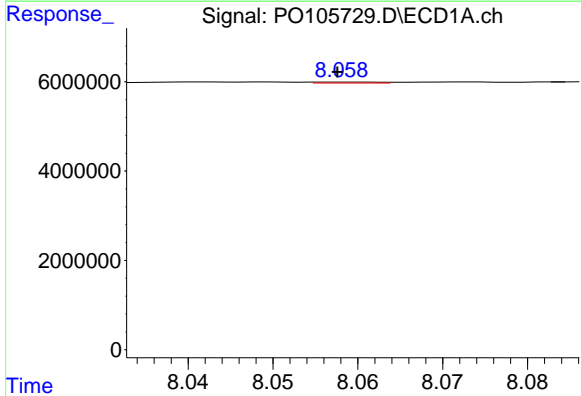
R.T.: 7.835 min  
 Delta R.T.: 0.002 min  
 Response: 657919  
 Conc: 2.43 ng/ml

Instrument :  
 ECD\_O  
 ClientSampleId :  
 PB162906BL



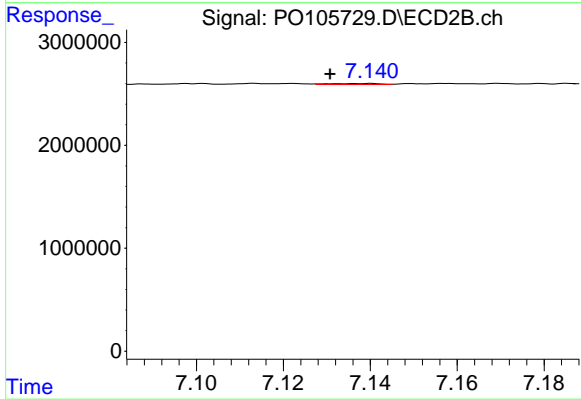
#33 AR-1260-3

R.T.: 6.648 min  
 Delta R.T.: -0.009 min  
 Response: 5135806  
 Conc: 33.43 ng/ml



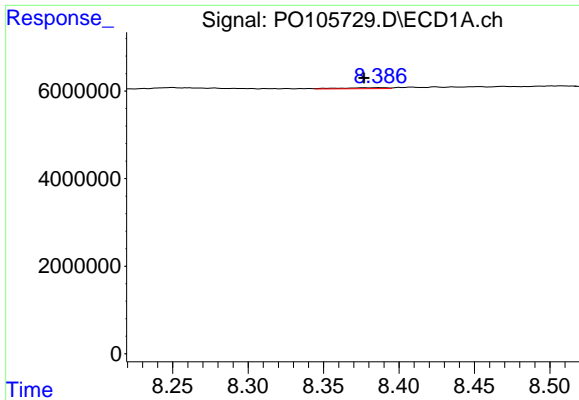
#34 AR-1260-4

R.T.: 8.059 min  
 Delta R.T.: 0.001 min  
 Response: 109814  
 Conc: 0.34 ng/ml



#34 AR-1260-4

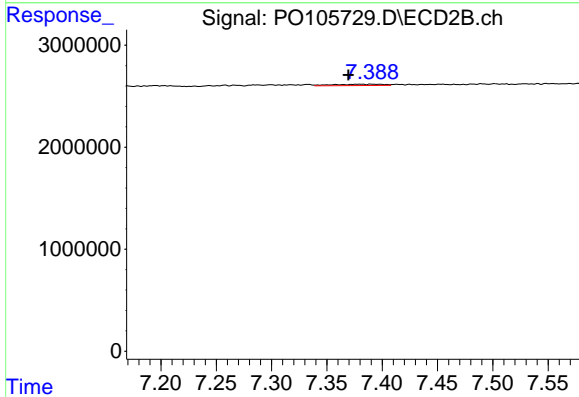
R.T.: 7.140 min  
 Delta R.T.: 0.009 min  
 Response: 79292  
 Conc: 0.81 ng/ml



#35 AR-1260-5

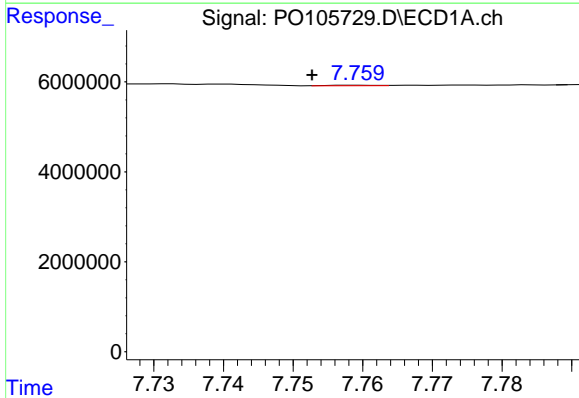
R.T.: 8.390 min  
 Delta R.T.: 0.013 min  
 Response: 490871  
 Conc: 0.79 ng/ml

Instrument :  
 ECD\_O  
 ClientSampleId :  
 PB162906BL



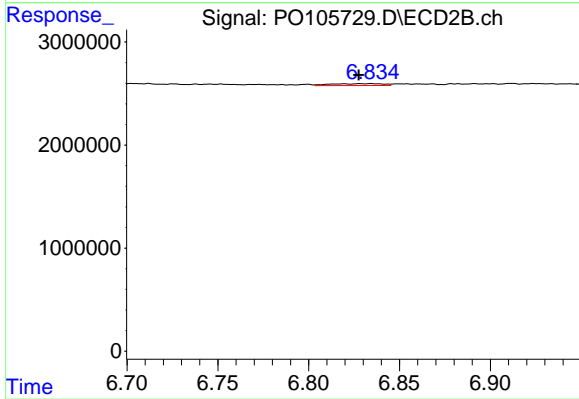
#35 AR-1260-5

R.T.: 7.390 min  
 Delta R.T.: 0.021 min  
 Response: 398316  
 Conc: 1.65 ng/ml



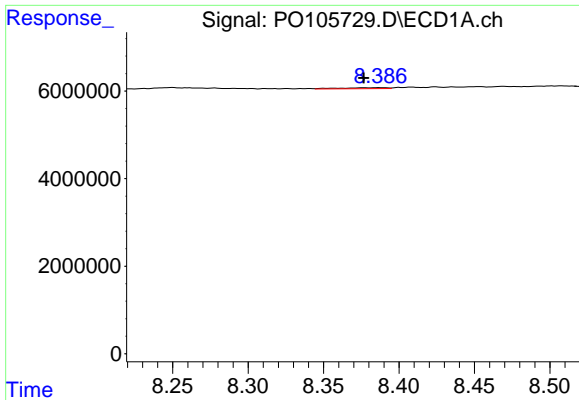
#36 AR-1262-1

R.T.: 7.759 min  
 Delta R.T.: 0.006 min  
 Response: 49132  
 Conc: 0.17 ng/ml



#36 AR-1262-1

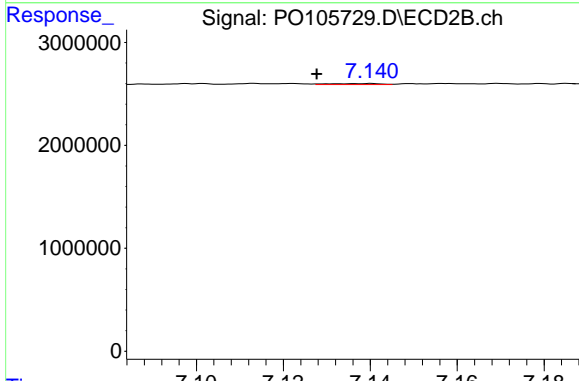
R.T.: 6.834 min  
 Delta R.T.: 0.007 min  
 Response: 375917  
 Conc: 4.61 ng/ml



#37 AR-1262-2

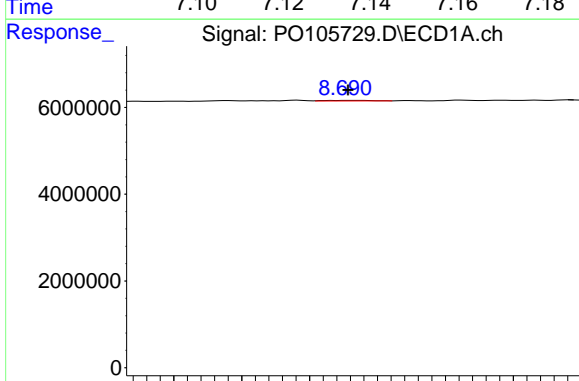
R.T.: 8.390 min  
 Delta R.T.: 0.013 min  
 Response: 490871  
 Conc: 0.64 ng/ml

Instrument :  
 ECD\_O  
 ClientSampleId :  
 PB162906BL



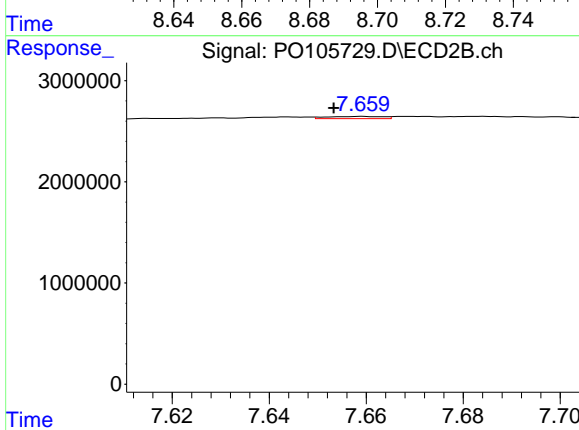
#37 AR-1262-2

R.T.: 7.140 min  
 Delta R.T.: 0.012 min  
 Response: 79292  
 Conc: 0.56 ng/ml



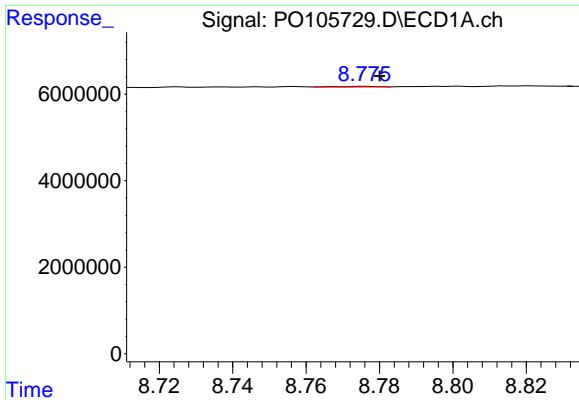
#38 AR-1262-3

R.T.: 8.694 min  
 Delta R.T.: 0.003 min  
 Response: 128865  
 Conc: 0.26 ng/ml



#38 AR-1262-3

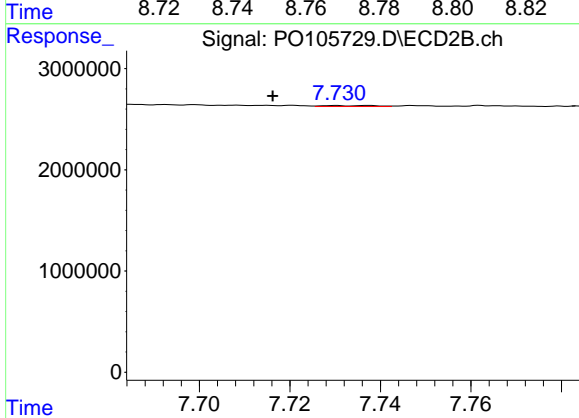
R.T.: 7.659 min  
 Delta R.T.: 0.006 min  
 Response: 175539  
 Conc: 1.63 ng/ml



#39 AR-1262-4

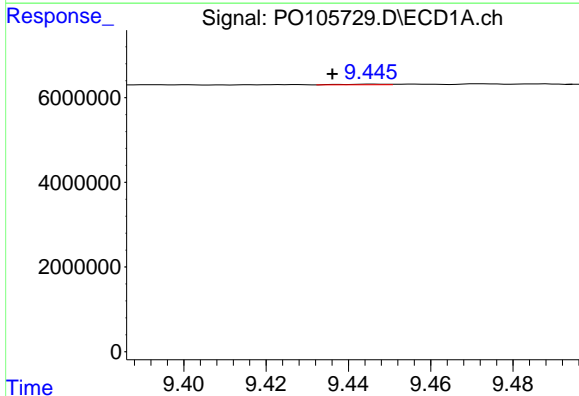
R.T.: 8.776 min  
 Delta R.T.: -0.004 min  
 Response: 107505  
 Conc: 0.29 ng/ml

Instrument :  
 ECD\_O  
 ClientSampleId :  
 PB162906BL



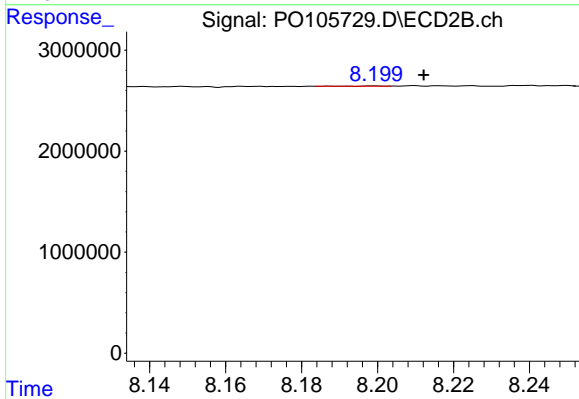
#39 AR-1262-4

R.T.: 7.730 min  
 Delta R.T.: 0.014 min  
 Response: 80261  
 Conc: 0.39 ng/ml



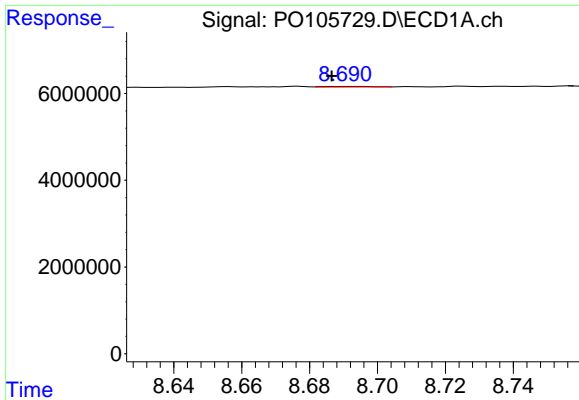
#40 AR-1262-5

R.T.: 9.446 min  
 Delta R.T.: 0.010 min  
 Response: 104800  
 Conc: 0.40 ng/ml



#40 AR-1262-5

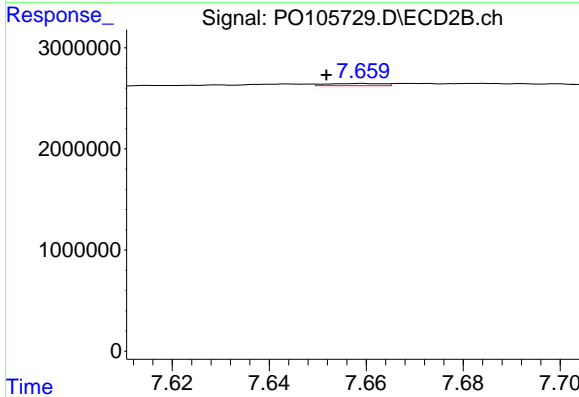
R.T.: 8.199 min  
 Delta R.T.: -0.013 min  
 Response: 1790  
 Conc: 0.02 ng/ml



#41 AR-1268-1

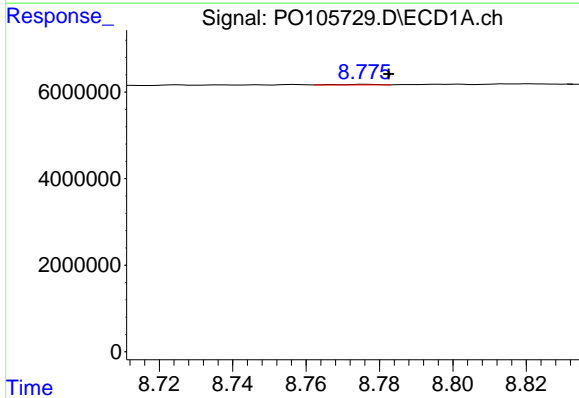
R.T.: 8.694 min  
 Delta R.T.: 0.007 min  
 Response: 128865  
 Conc: 0.15 ng/ml

Instrument :  
 ECD\_O  
 ClientSampleId :  
 PB162906BL



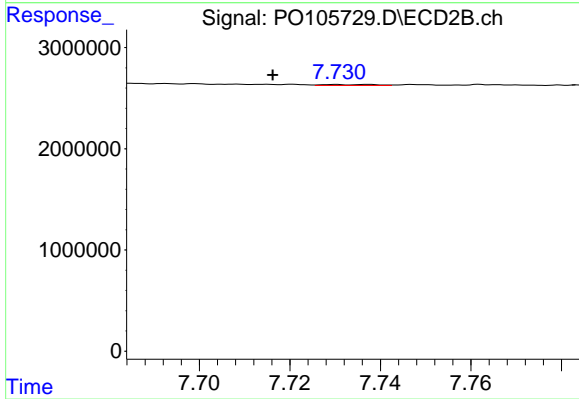
#41 AR-1268-1

R.T.: 7.659 min  
 Delta R.T.: 0.007 min  
 Response: 175539  
 Conc: 0.56 ng/ml



#42 AR-1268-2

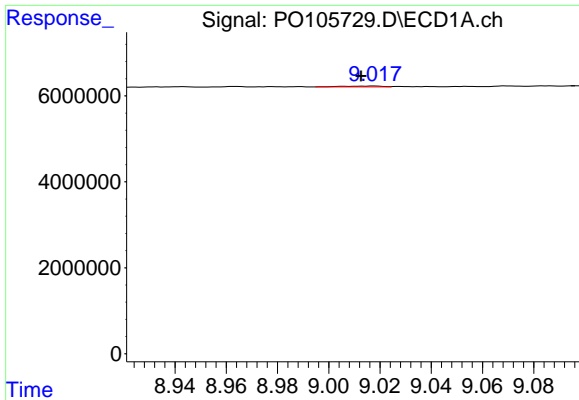
R.T.: 8.776 min  
 Delta R.T.: -0.006 min  
 Response: 107505  
 Conc: 0.14 ng/ml



#42 AR-1268-2

R.T.: 7.730 min  
 Delta R.T.: 0.014 min  
 Response: 80261  
 Conc: 0.28 ng/ml

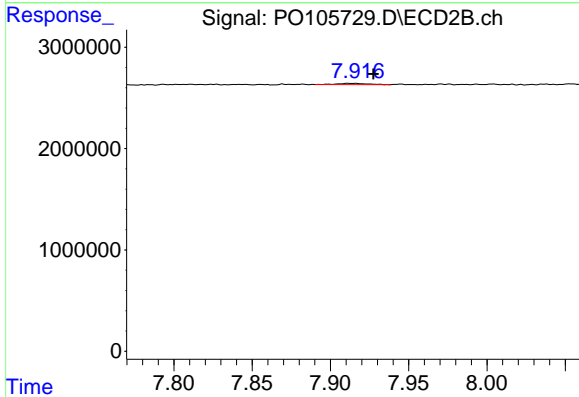




#43 AR-1268-3

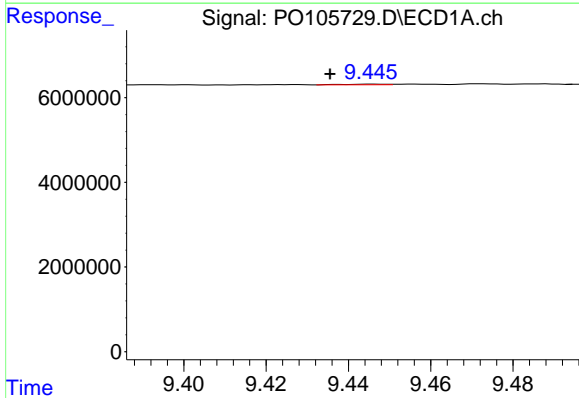
R.T.: 9.018 min  
 Delta R.T.: 0.005 min  
 Response: 217690  
 Conc: 0.34 ng/ml

Instrument :  
 ECD\_O  
 ClientSampleId :  
 PB162906BL



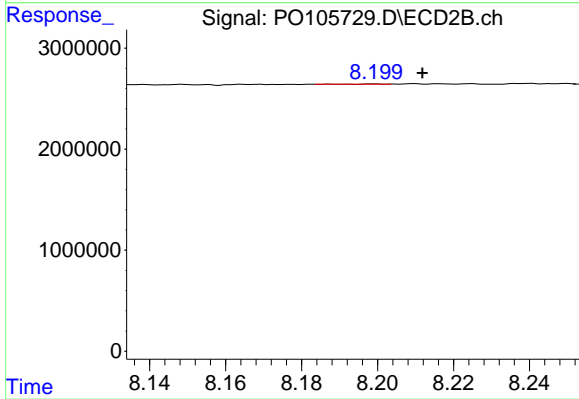
#43 AR-1268-3

R.T.: 7.912 min  
 Delta R.T.: -0.015 min  
 Response: 151223  
 Conc: 0.65 ng/ml



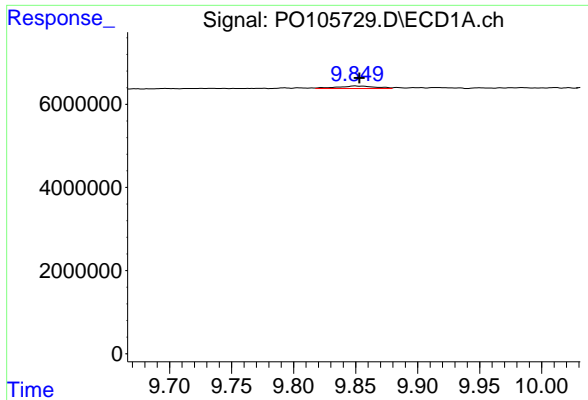
#44 AR-1268-4

R.T.: 9.446 min  
 Delta R.T.: 0.010 min  
 Response: 104800  
 Conc: 0.38 ng/ml



#44 AR-1268-4

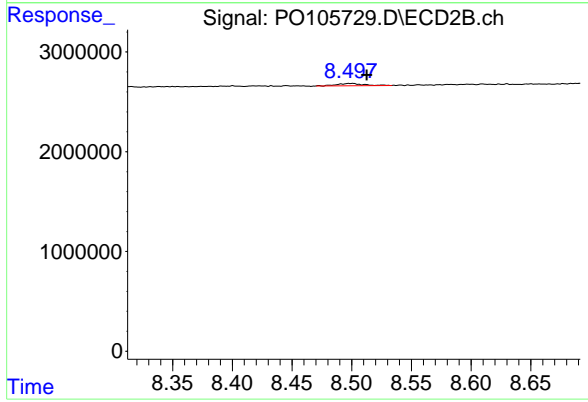
R.T.: 8.199 min  
 Delta R.T.: -0.013 min  
 Response: 1790  
 Conc: 0.02 ng/ml



#45 AR-1268-5

R.T.: 9.850 min  
 Delta R.T.: -0.003 min  
 Response: 1347973  
 Conc: 0.65 ng/ml

Instrument :  
 ECD\_O  
 ClientSampleId :  
 PB162906BL



#45 AR-1268-5

R.T.: 8.499 min  
 Delta R.T.: -0.013 min  
 Response: 351240  
 Conc: 0.47 ng/ml