

Data Path : Z:\pestpcbsrv\HPCHEM1\ECD_0\Data\P0082319\
 Data File : P0059739.D
 Signal(s) : Signal #1: ECD1A.CH Signal #2: ECD2B.CH
 Acq On : 23 Aug 2019 13:41
 Operator : SM/AJ
 Sample : PB122458BL
 Misc :
 ALS Vial : 18 Sample Multiplier: 1

Instrument :
 ECD_0
 ClientSampleId :
 PB122458BL

Integration File signal 1: autoint1.e
 Integration File signal 2: autoint2.e
 Quant Time: Aug 23 14:55:34 2019
 Quant Method : Z:\pestpcbsrv\HPCHEM1\ECD_0\methods\P0081719.M
 Quant Title : GC EXTRACTABLES
 QLast Update : Sat Aug 17 03:09:44 2019
 Response via : Initial Calibration
 Integrator: ChemStation 6890 Scale Mode: Small noise peaks clipped

Volume Inj. : 2 µl
 Signal #1 Phase : ZB-MR1 Signal #2 Phase: ZB-MR2
 Signal #1 Info : 30Mx0.32mmx 0.50µ Signal #2 Info : 30M x 0.32mm x 0.25µm

Compound	RT#1	RT#2	Resp#1	Resp#2	ng/ml	ng/ml

System Monitoring Compounds						
1) SA Tetrachlo...	4.126	3.498	970475	846034	27.718	23.504
2) SA Decachlor...	9.599	8.360	1025006	824484	19.267	20.448

Target Compounds

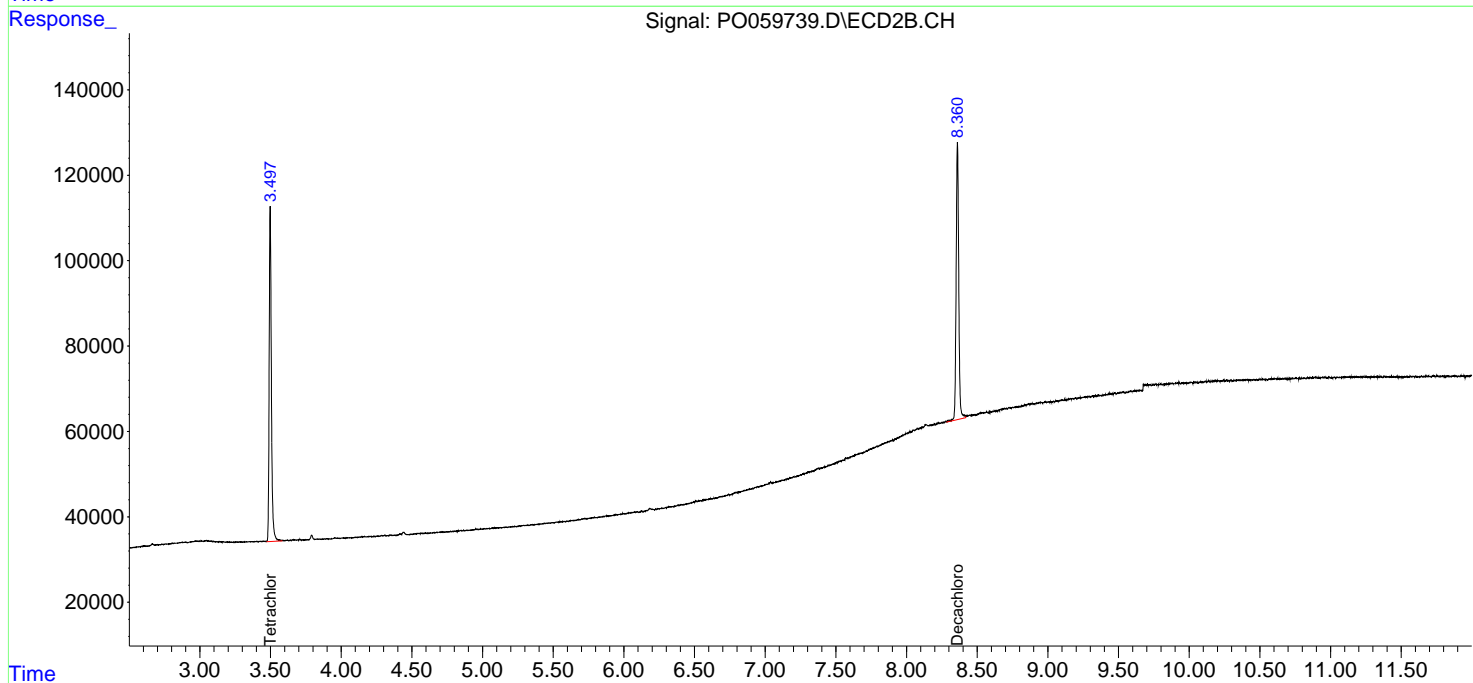
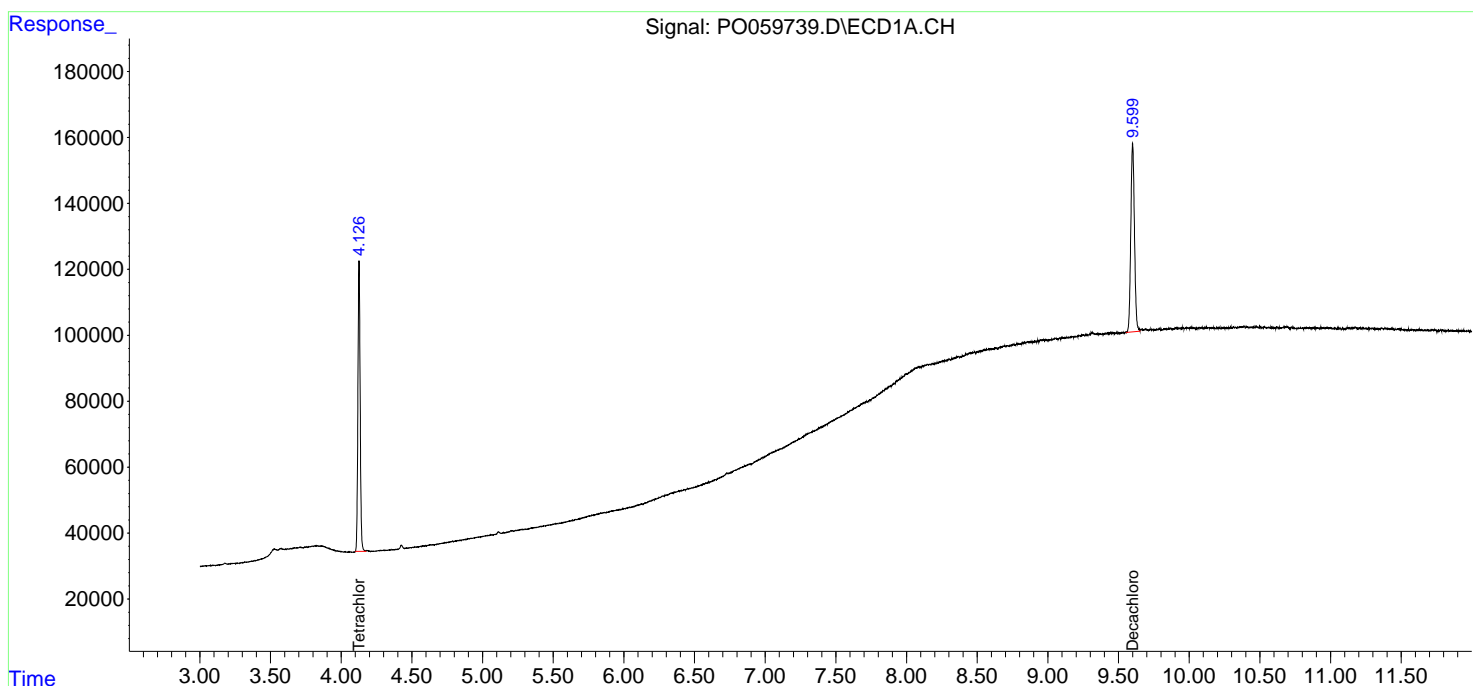
(f)=RT Delta > 1/2 Window (#)=Amounts differ by > 25% (m)=manual int.

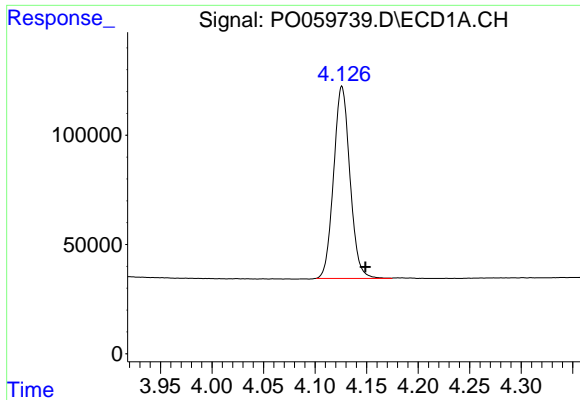
Data Path : Z:\pestpcbsrv\HPCHEM1\ECD_0\Data\P0082319\
 Data File : P0059739.D
 Signal(s) : Signal #1: ECD1A.CH Signal #2: ECD2B.CH
 Acq On : 23 Aug 2019 13:41
 Operator : SM/AJ
 Sample : PB122458BL
 Misc :
 ALS Vial : 18 Sample Multiplier: 1

Instrument :
 ECD_O
 ClientSampleID :
 PB122458BL

Integration File signal 1: autoint1.e
 Integration File signal 2: autoint2.e
 Quant Time: Aug 23 14:55:34 2019
 Quant Method : Z:\pestpcbsrv\HPCHEM1\ECD_0\methods\P0081719.M
 Quant Title : GC EXTRACTABLES
 QLast Update : Sat Aug 17 03:09:44 2019
 Response via : Initial Calibration
 Integrator: ChemStation 6890 Scale Mode: Small noise peaks clipped

Volume Inj. : 2 µl
 Signal #1 Phase : ZB-MR1 Signal #2 Phase: ZB-MR2
 Signal #1 Info : 30Mx0.32mmx 0.50µ Signal #2 Info : 30M x 0.32mm x 0.25µm

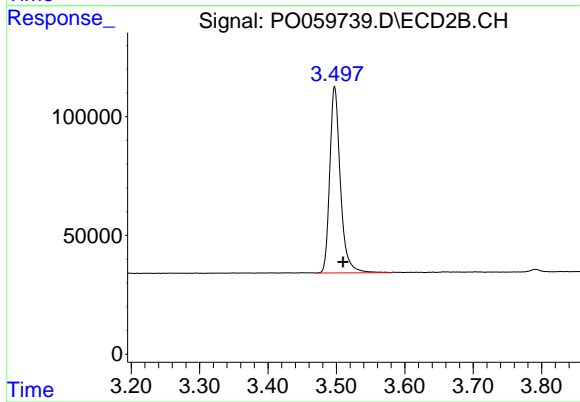




#1 Tetrachloro-m-xylene

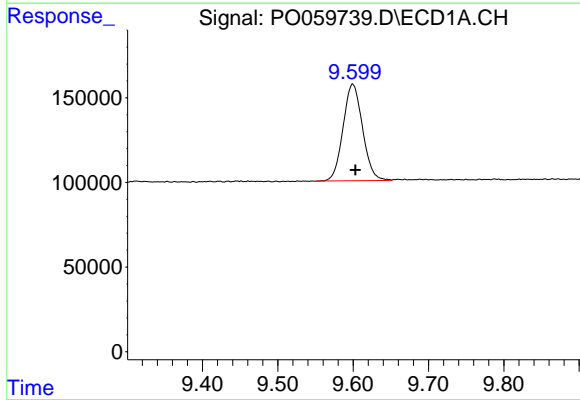
R.T.: 4.126 min
 Delta R.T.: -0.023 min
 Response: 970475
 Conc: 27.72 ng/ml

Instrument :
 ECD_O
 ClientSampled :
 PB122458BL



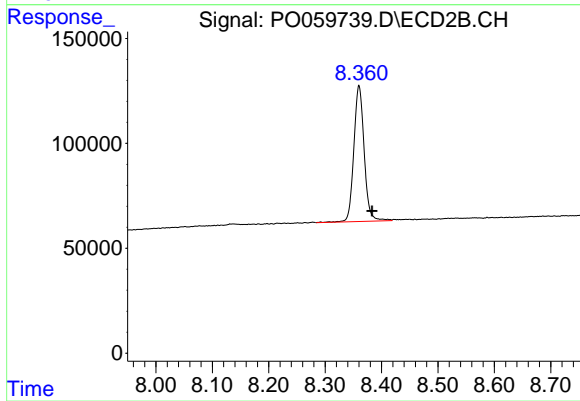
#1 Tetrachloro-m-xylene

R.T.: 3.498 min
 Delta R.T.: -0.012 min
 Response: 846034
 Conc: 23.50 ng/ml



#2 Decachlorobiphenyl

R.T.: 9.599 min
 Delta R.T.: -0.004 min
 Response: 1025006
 Conc: 19.27 ng/ml



#2 Decachlorobiphenyl

R.T.: 8.360 min
 Delta R.T.: -0.023 min
 Response: 824484
 Conc: 20.45 ng/ml