

Data Path : Z:\pestpcbsrv\HPCHEM1\ECD\_0\Data\P0082319\  
 Data File : P0059745.D  
 Signal(s) : Signal #1: ECD1A.CH Signal #2: ECD2B.CH  
 Acq On : 23 Aug 2019 15:22  
 Operator : SM/AJ  
 Sample : K4090-13 2X  
 Misc :  
 ALS Vial : 23 Sample Multiplier: 1

**Instrument :**  
 ECD\_0  
**ClientSampleId :**  
 OR-03-082219

**Manual Integrations**  
**APPROVED**  
 Ankita  
 8/26/2019 3:11:03 PM

Integration File signal 1: autoint1.e  
 Integration File signal 2: autoint2.e  
 Quant Time: Aug 23 16:57:26 2019  
 Quant Method : Z:\pestpcbsrv\HPCHEM1\ECD\_0\methods\P0081719.M  
 Quant Title : GC EXTRACTABLES  
 QLast Update : Sat Aug 17 03:09:44 2019  
 Response via : Initial Calibration  
 Integrator: ChemStation 6890 Scale Mode: Small noise peaks clipped

Volume Inj. : 2 µl  
 Signal #1 Phase : ZB-MR1 Signal #2 Phase: ZB-MR2  
 Signal #1 Info : 30Mx0.32mmx 0.50µ Signal #2 Info : 30M x 0.32mm x 0.25µm

Compound	RT#1	RT#2	Resp#1	Resp#2	ng/ml	ng/ml
-----						
System Monitoring Compounds						
1) SA Tetrachlo...	4.124	3.498	522870	515553	14.934	14.323
2) SA Decachlor...	9.598	8.359	520281	387089	9.780	9.600m

Target Compounds

(f)=RT Delta > 1/2 Window (#)=Amounts differ by > 25% (m)=manual int.

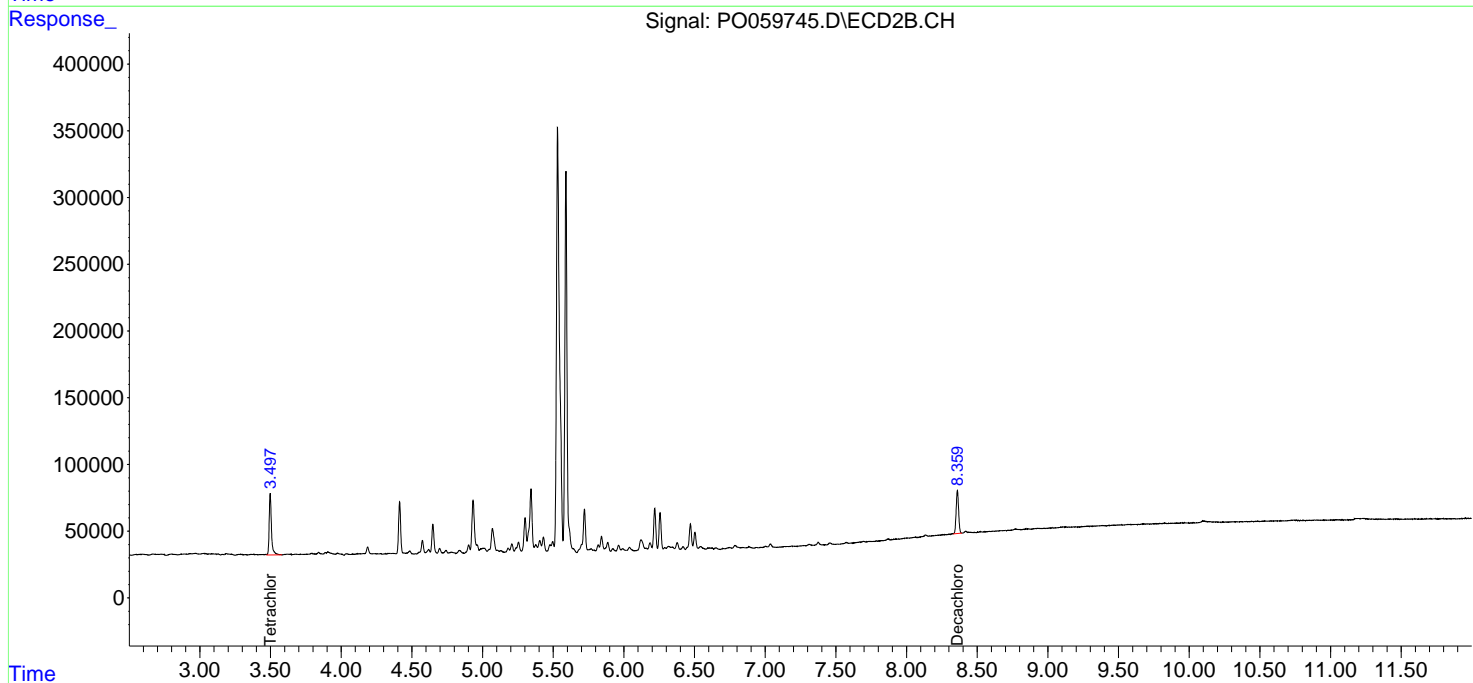
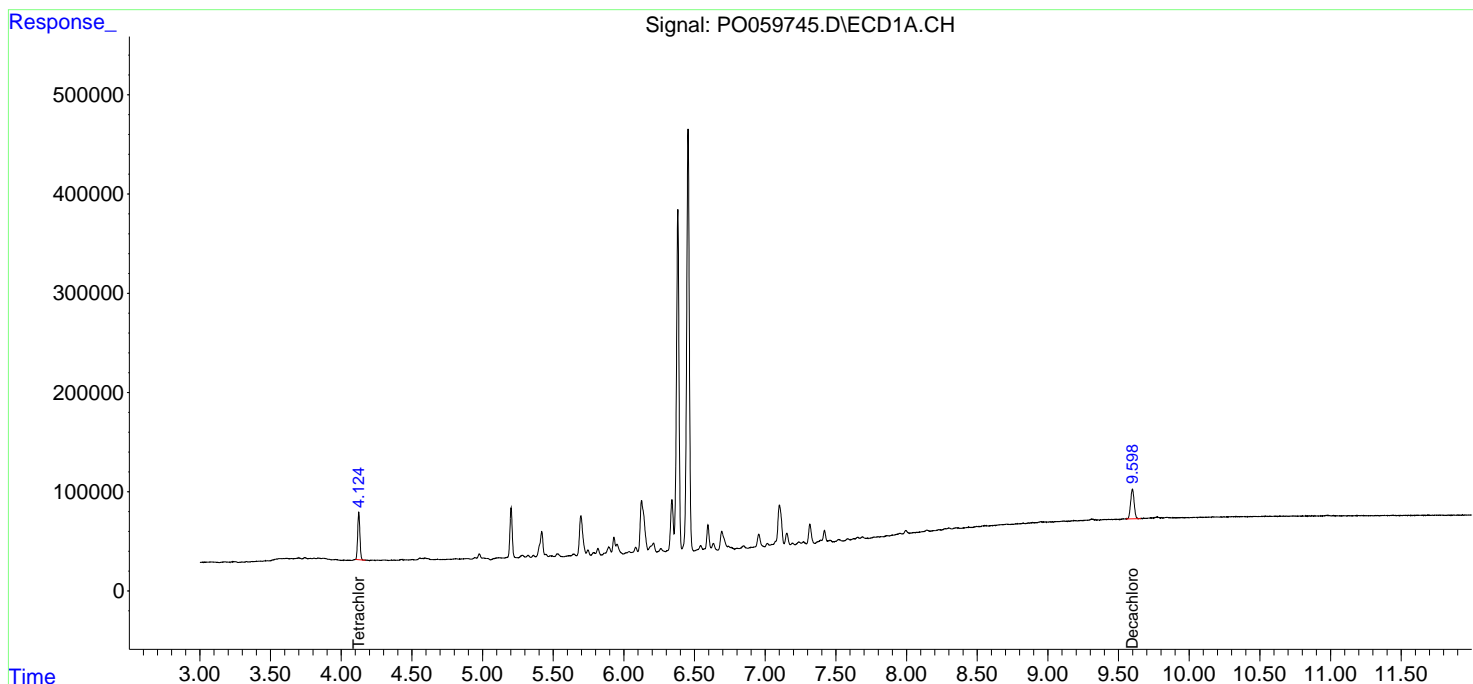
Data Path : Z:\pestpcbsrv\HPCHEM1\ECD\_0\Data\PO082319\  
 Data File : PO059745.D  
 Signal(s) : Signal #1: ECD1A.CH Signal #2: ECD2B.CH  
 Acq On : 23 Aug 2019 15:22  
 Operator : SM/AJ  
 Sample : K4090-13 2X  
 Misc :  
 ALS Vial : 23 Sample Multiplier: 1

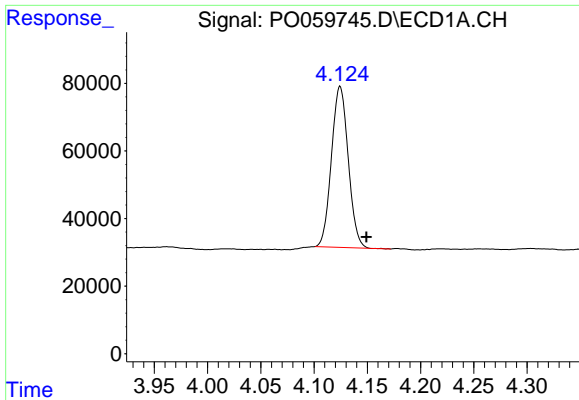
**Instrument :**  
 ECD\_O  
**ClientSampled :**  
 OR-03-082219

**Manual Integrations**  
**APPROVED**  
 Ankita  
 8/26/2019 3:11:03 PM

Integration File signal 1: autoint1.e  
 Integration File signal 2: autoint2.e  
 Quant Time: Aug 23 16:57:26 2019  
 Quant Method : Z:\pestpcbsrv\HPCHEM1\ECD\_0\methods\PO081719.M  
 Quant Title : GC EXTRACTABLES  
 QLast Update : Sat Aug 17 03:09:44 2019  
 Response via : Initial Calibration  
 Integrator: ChemStation 6890 Scale Mode: Small noise peaks clipped

Volume Inj. : 2 µl  
 Signal #1 Phase : ZB-MR1 Signal #2 Phase: ZB-MR2  
 Signal #1 Info : 30Mx0.32mmx 0.50µ Signal #2 Info : 30M x 0.32mm x 0.25µm

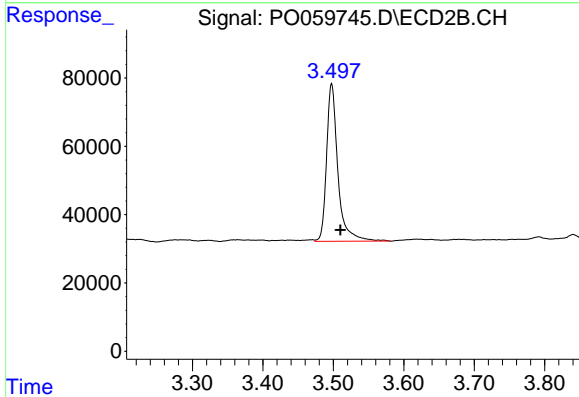




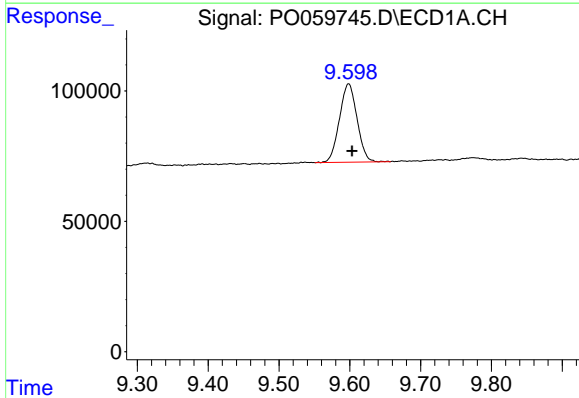
#1 Tetrachloro-m-xylene  
 R.T.: 4.124 min  
 Delta R.T.: -0.025 min  
 Response: 522870  
 Conc: 14.93 ng/ml

Instrument :  
 ECD\_O  
 ClientSampleId :  
 OR-03-082219

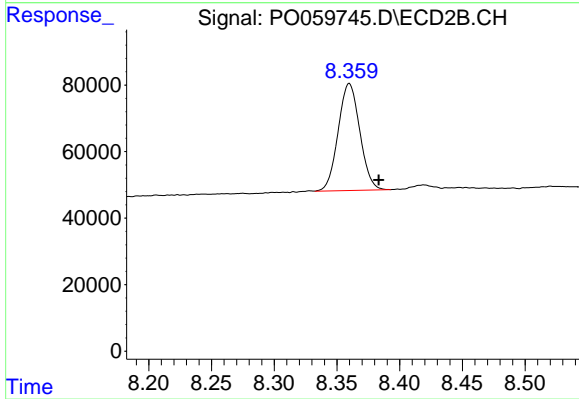
Manual Integrations  
 APPROVED  
 Ankita  
 8/26/2019 3:11:03 PM



#1 Tetrachloro-m-xylene  
 R.T.: 3.498 min  
 Delta R.T.: -0.012 min  
 Response: 515553  
 Conc: 14.32 ng/ml



#2 Decachlorobiphenyl  
 R.T.: 9.598 min  
 Delta R.T.: -0.005 min  
 Response: 520281  
 Conc: 9.78 ng/ml



#2 Decachlorobiphenyl  
 R.T.: 8.359 min  
 Delta R.T.: -0.024 min  
 Response: 387089  
 Conc: 9.60 ng/ml m