

Data Path : Z:\pestpcbsrv\HPCHEM1\ECD_0\Data\P0082319\
 Data File : P0059783.D
 Signal(s) : Signal #1: ECD1A.CH Signal #2: ECD2B.CH
 Acq On : 24 Aug 2019 1:39
 Operator : SM/AJ
 Sample : K4495-13
 Misc :
 ALS Vial : 57 Sample Multiplier: 1

Instrument :
 ECD_0
ClientSampleId :
 S705-N-0.0-0.5-082219

Manual Integrations
APPROVED
 Ankita
 8/26/2019 3:15:45 PM

Integration File signal 1: autoint1.e
 Integration File signal 2: autoint2.e
 Quant Time: Aug 24 02:05:14 2019
 Quant Method : Z:\pestpcbsrv\HPCHEM1\ECD_0\methods\P0081719.M
 Quant Title : GC EXTRACTABLES
 QLast Update : Sat Aug 17 03:09:44 2019
 Response via : Initial Calibration
 Integrator: ChemStation 6890 Scale Mode: Small noise peaks clipped

Volume Inj. : 2 µl
 Signal #1 Phase : ZB-MR1 Signal #2 Phase: ZB-MR2
 Signal #1 Info : 30Mx0.32mmx 0.50µ Signal #2 Info : 30M x 0.32mm x 0.25µm

Compound	RT#1	RT#2	Resp#1	Resp#2	ng/ml	ng/ml

System Monitoring Compounds						
1) SA Tetrachlo...	4.122	3.497	992867	897890	28.357m	24.944
2) SA Decachlor...	9.596	8.358	707231	609521	13.294m	15.117
Target Compounds						
31) L7 AR-1260-1	6.849	5.994	80639	66185	29.912	29.043
32) L7 AR-1260-2	7.110	6.182	331025	68556	89.214	23.399 #
33) L7 AR-1260-3	7.458	6.330	109966	64554	33.564	24.368 #
34) L7 AR-1260-4	7.686	6.792	117356	49705	38.210	21.968 #
35) L7 AR-1260-5	7.994	7.035	160943	146912	22.729m	26.695

(f)=RT Delta > 1/2 Window (#)=Amounts differ by > 25% (m)=manual int.

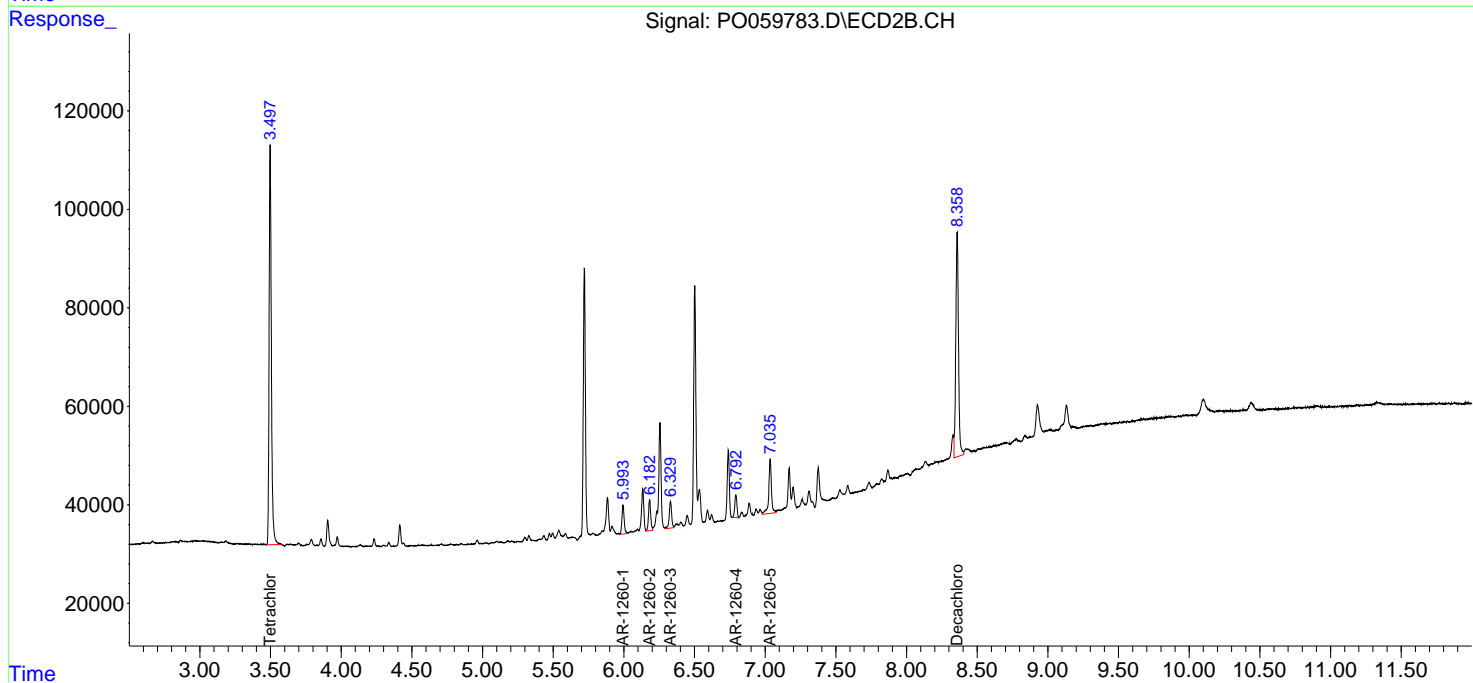
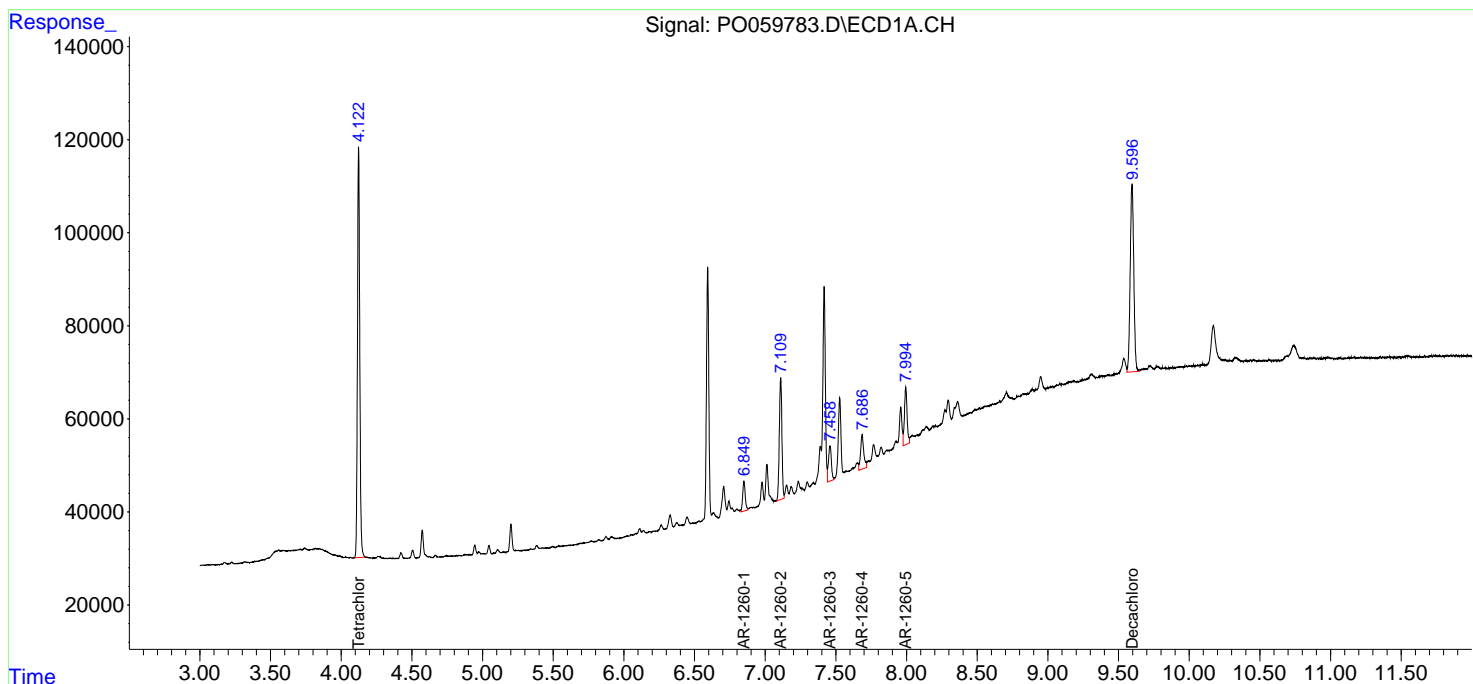
Data Path : Z:\pestpcbsrv\HPCHEM1\ECD_0\Data\PO082319\
 Data File : PO059783.D
 Signal(s) : Signal #1: ECD1A.CH Signal #2: ECD2B.CH
 Acq On : 24 Aug 2019 1:39
 Operator : SM/AJ
 Sample : K4495-13
 Misc :
 ALS Vial : 57 Sample Multiplier: 1

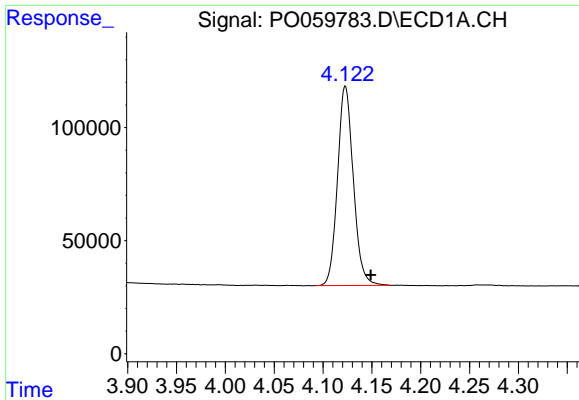
Instrument :
 ECD_O
ClientSampled :
 S705-N-0.0-0.5-082219

Manual Integrations
APPROVED
 Ankita
 8/26/2019 3:15:45 PM

Integration File signal 1: autoint1.e
 Integration File signal 2: autoint2.e
 Quant Time: Aug 24 02:05:14 2019
 Quant Method : Z:\pestpcbsrv\HPCHEM1\ECD_0\methods\PO081719.M
 Quant Title : GC EXTRACTABLES
 QLast Update : Sat Aug 17 03:09:44 2019
 Response via : Initial Calibration
 Integrator: ChemStation 6890 Scale Mode: Small noise peaks clipped

Volume Inj. : 2 µl
 Signal #1 Phase : ZB-MR1 Signal #2 Phase: ZB-MR2
 Signal #1 Info : 30Mx0.32mmx 0.50µ Signal #2 Info : 30M x 0.32mm x 0.25µm

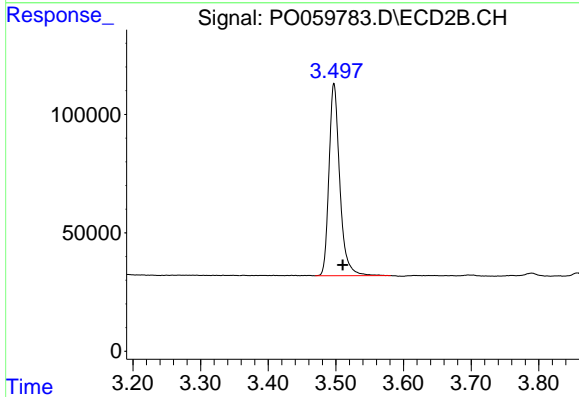




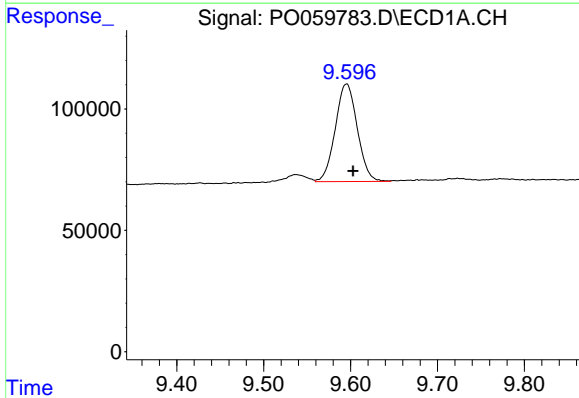
#1 Tetrachloro-m-xylene
 R.T.: 4.122 min
 Delta R.T.: -0.027 min
 Response: 992867
 Conc: 28.36 ng/ml m

Instrument :
 ECD_O
ClientSampled :
 S705-N-0.0-0.5-082219

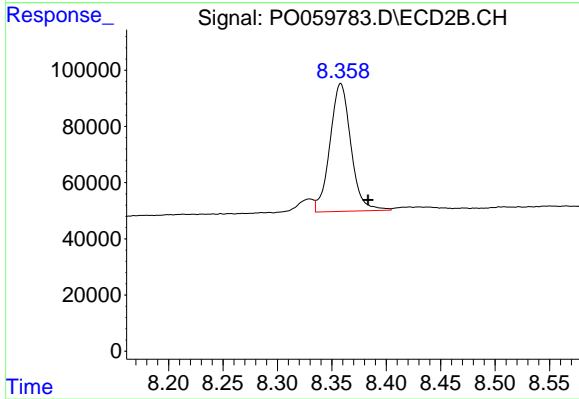
Manual Integrations
APPROVED
 Ankita
 8/26/2019 3:15:45 PM



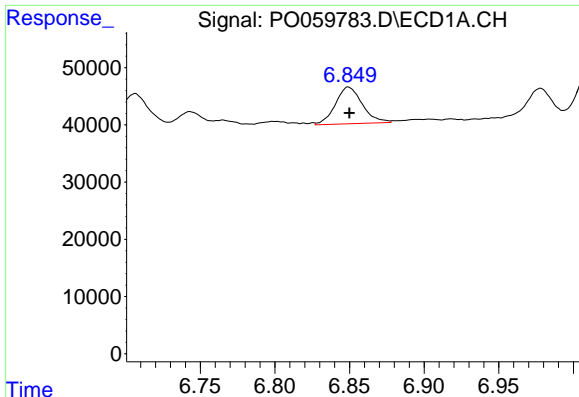
#1 Tetrachloro-m-xylene
 R.T.: 3.497 min
 Delta R.T.: -0.013 min
 Response: 897890
 Conc: 24.94 ng/ml



#2 Decachlorobiphenyl
 R.T.: 9.596 min
 Delta R.T.: -0.007 min
 Response: 707231
 Conc: 13.29 ng/ml m



#2 Decachlorobiphenyl
 R.T.: 8.358 min
 Delta R.T.: -0.025 min
 Response: 609521
 Conc: 15.12 ng/ml



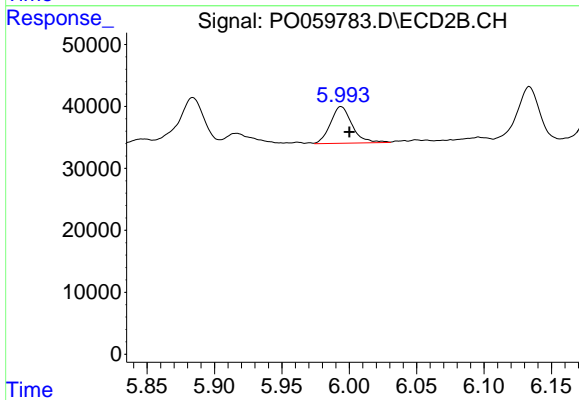
#31 AR-1260-1

R.T.: 6.849 min
 Delta R.T.: 0.000 min
 Response: 80639
 Conc: 29.91 ng/ml

Instrument :
 ECD_O
 ClientSampleId :
 S705-N-0.0-0.5-082219

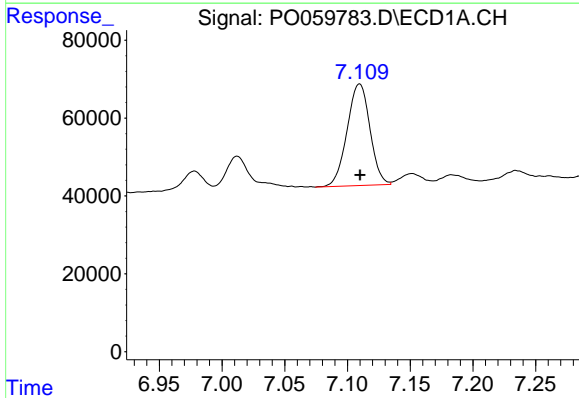
Manual Integrations
 APPROVED

Ankita
 8/26/2019 3:15:45 PM



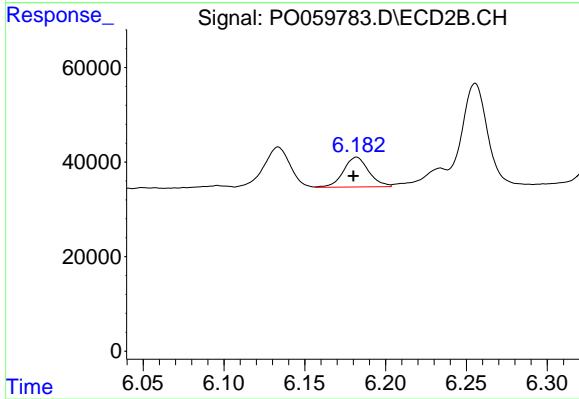
#31 AR-1260-1

R.T.: 5.994 min
 Delta R.T.: -0.006 min
 Response: 66185
 Conc: 29.04 ng/ml



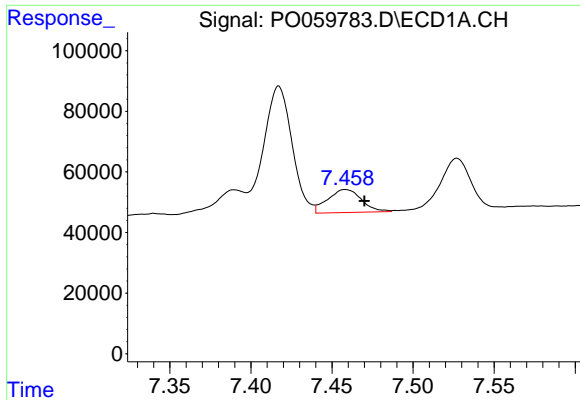
#32 AR-1260-2

R.T.: 7.110 min
 Delta R.T.: 0.000 min
 Response: 331025
 Conc: 89.21 ng/ml



#32 AR-1260-2

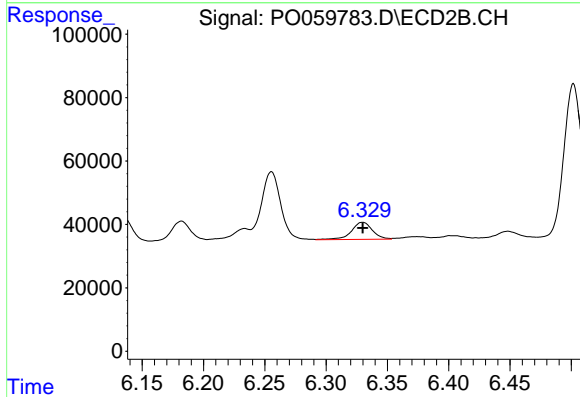
R.T.: 6.182 min
 Delta R.T.: 0.002 min
 Response: 68556
 Conc: 23.40 ng/ml



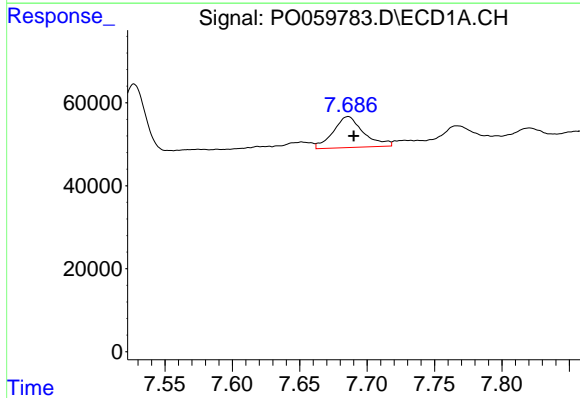
#33 AR-1260-3
 R.T.: 7.458 min
 Delta R.T.: -0.012 min
 Response: 109966
 Conc: 33.56 ng/ml

Instrument :
 ECD_O
ClientSampled :
 S705-N-0.0-0.5-082219

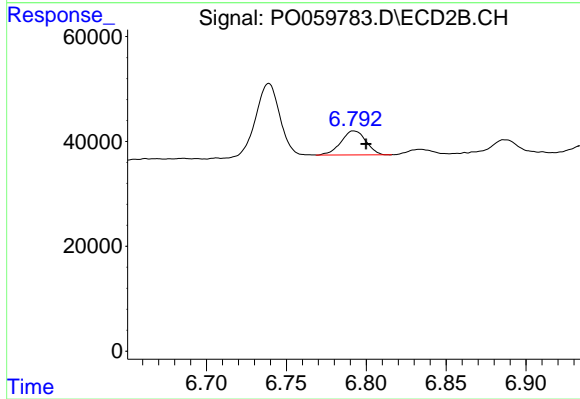
Manual Integrations
APPROVED
 Ankita
 8/26/2019 3:15:45 PM



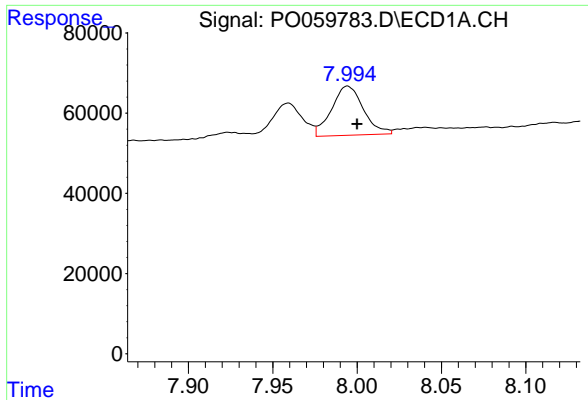
#33 AR-1260-3
 R.T.: 6.330 min
 Delta R.T.: 0.000 min
 Response: 64554
 Conc: 24.37 ng/ml



#34 AR-1260-4
 R.T.: 7.686 min
 Delta R.T.: -0.004 min
 Response: 117356
 Conc: 38.21 ng/ml



#34 AR-1260-4
 R.T.: 6.792 min
 Delta R.T.: -0.008 min
 Response: 49705
 Conc: 21.97 ng/ml

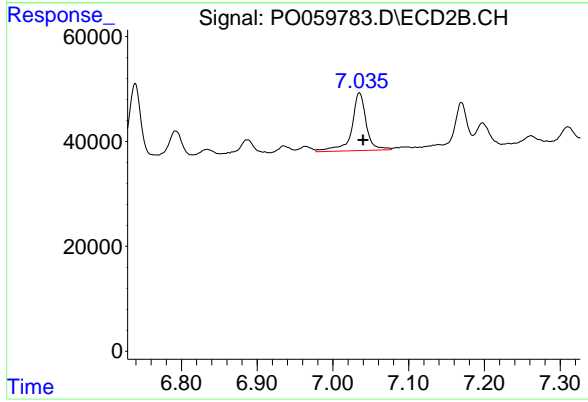


#35 AR-1260-5

R.T.: 7.994 min
Delta R.T.: -0.006 min
Response: 160943
Conc: 22.73 ng/ml m

Instrument :
ECD_O
ClientSampleId :
S705-N-0.0-0.5-082219

Manual Integrations
APPROVED
Ankita
8/26/2019 3:15:45 PM



#35 AR-1260-5

R.T.: 7.035 min
Delta R.T.: -0.005 min
Response: 146912
Conc: 26.70 ng/ml