

Data Path : Z:\pestpcbsrv\HPCHEM1\ECD_0\Data\P0082324\
 Data File : PO105789.D
 Signal(s) : Signal #1: ECD1A.ch Signal #2: ECD2B.ch
 Acq On : 23 Aug 2024 15:58
 Operator : YP/AJ
 Sample : AR1242CCC500
 Misc :
 ALS Vial : 4 Sample Multiplier: 1

Instrument :
 ECD_0
 ClientSampleId :
 AR1242CCC500

Integration File signal 1: autoint1.e
 Integration File signal 2: autoint2.e
 Quant Time: Aug 24 08:15:40 2024
 Quant Method : Z:\pestpcbsrv\HPCHEM1\ECD_0\methods\P0081524.M
 Quant Title : GC EXTRACTABLES
 QLast Update : Thu Aug 15 11:44:23 2024
 Response via : Initial Calibration
 Integrator: ChemStation

Volume Inj. : 2 µl
 Signal #1 Phase : ZB-MR1 Signal #2 Phase: ZB-MR2
 Signal #1 Info : 30Mx0.32mmx 0.50µ Signal #2 Info : 30M x 0.32mm x 0.25µm

Compound	RT#1	RT#2	Resp#1	Resp#2	ng/ml	ng/ml
System Monitoring Compounds						
1) SA Tetrachlo...	4.454	3.723	425.7E6	128.7E6	45.528	50.472
2) SA Decachlor...	10.192	8.758	275.0E6	108.4E6	47.380	54.938
Target Compounds						
3) L1 AR-1016-1	5.616	4.813	112.5E6	35289540	361.476	404.654
4) L1 AR-1016-2	5.639	4.832	157.9E6	46275116	363.790	394.235
5) L1 AR-1016-3	5.701	5.010	95995838	26192482	361.076	423.692
6) L1 AR-1016-4	5.800	5.050	78687481	20103858	357.463	424.065
7) L1 AR-1016-5	6.094	5.265	80426275	27573613	385.183	434.205
8) L2 AR-1221-1	4.654	3.936	11641372	3225106	102.812	110.153
9) L2 AR-1221-2	4.746	4.023	18708628	4962230	211.023	228.092
10) L2 AR-1221-3	4.821	4.099	61436172	17812881	240.506	258.967
11) L3 AR-1232-1	4.821	4.099	61436172	17812881	294.622	321.853
12) L3 AR-1232-2	5.350	4.832	82369290	46275116	766.077	890.197
13) L3 AR-1232-3	5.639	5.010	157.9E6	26192482	801.726	954.371
14) L3 AR-1232-4	5.800	5.093	78687481	25035126	809.345	1005.300
15) L3 AR-1232-5	5.889	5.265	69026127	27573613	948.838	975.133
16) L4 AR-1242-1	5.616	4.813	112.5E6	35289540	451.849	508.535
17) L4 AR-1242-2	5.639	4.832	157.9E6	46275116	462.853	504.016
18) L4 AR-1242-3	5.701	5.010	95995838	26192482	457.703	535.473
19) L4 AR-1242-4	5.800	5.093	78687481	25035126	449.640	507.389
20) L4 AR-1242-5	6.534	5.617	82653669	32117117	458.775	512.848
21) L5 AR-1248-1	5.616	4.813	112.5E6	35289540	583.945	665.184
22) L5 AR-1248-2	5.889	5.050	69026127	20103858	262.219	288.259
23) L5 AR-1248-3	6.094	5.093	80426275	25035126	274.156	336.974
24) L5 AR-1248-4	6.495	5.265	79623999	27573613	245.438	309.976 #
25) L5 AR-1248-5	6.534	5.659	82653669	25652265	264.783	292.703
26) L6 AR-1254-1	6.468	5.617	64518860	32117117	203.865	255.185 #
27) L6 AR-1254-2	6.691	5.764	74148103	9718936	157.411	87.223 #
28) L6 AR-1254-3	7.053	6.170	33842358	12333204	70.622	68.730
29) L6 AR-1254-4	7.337	6.398	22915638	8343008	65.084	75.128
30) L6 AR-1254-5	7.755	6.816	9983790	5090285	26.183	31.654
31) L7 AR-1260-1	7.217	6.316	6106932	3493099	16.531	29.488 #
32) L7 AR-1260-2	7.471	6.487	7925130	2405454	18.346	16.395
33) L7 AR-1260-3	7.812	6.642	1339612	6285009	4.946	40.915 #
34) L7 AR-1260-4	8.043	7.116	4870358	296266	15.297	3.019 #
35) L7 AR-1260-5	8.373	7.385	2031825	467916	3.262	1.934 #
36) L8 AR-1262-1	7.755	6.816	9983790	5090285	34.541	62.412 #
37) L8 AR-1262-2	8.373	7.116	2031825	296266	2.645	2.105
38) L8 AR-1262-3	8.705	7.662	907970	52120	1.804	0.484 #
39) L8 AR-1262-4	8.780	7.699	24606	585602	0.066	2.813 #
40) L8 AR-1262-5	9.436	8.212	116614	69978	0.447	0.750 #
41) L9 AR-1268-1	8.705	7.662	907970	52120	1.078	0.167 #

Data Path : Z:\pestpcbsrv\HPCHEM1\ECD_0\Data\P0082324\
 Data File : P0105789.D
 Signal(s) : Signal #1: ECD1A.ch Signal #2: ECD2B.ch
 Acq On : 23 Aug 2024 15:58
 Operator : YP/AJ
 Sample : AR1242CCC500
 Misc :
 ALS Vial : 4 Sample Multiplier: 1

Instrument :
 ECD_0
ClientSampleId :
 AR1242CCC500

Integration File signal 1: autoint1.e
 Integration File signal 2: autoint2.e
 Quant Time: Aug 24 08:15:40 2024
 Quant Method : Z:\pestpcbsrv\HPCHEM1\ECD_0\methods\P0081524.M
 Quant Title : GC EXTRACTABLES
 QLast Update : Thu Aug 15 11:44:23 2024
 Response via : Initial Calibration
 Integrator: ChemStation

Volume Inj. : 2 µl
 Signal #1 Phase : ZB-MR1 Signal #2 Phase: ZB-MR2
 Signal #1 Info : 30Mx0.32mmx 0.50µ Signal #2 Info : 30M x 0.32mm x 0.25µm

	Compound	RT#1	RT#2	Resp#1	Resp#2	ng/ml	ng/ml
42)	L9 AR-1268-2	8.780	7.699	24606	585602	0.033	2.076 #
43)	L9 AR-1268-3	9.013	7.937	98996	25998	0.156	0.112 #
44)	L9 AR-1268-4	9.436	8.212	116614	69978	0.424	0.712 #
45)	L9 AR-1268-5	9.848	8.493	1549555	543439	0.742	0.720

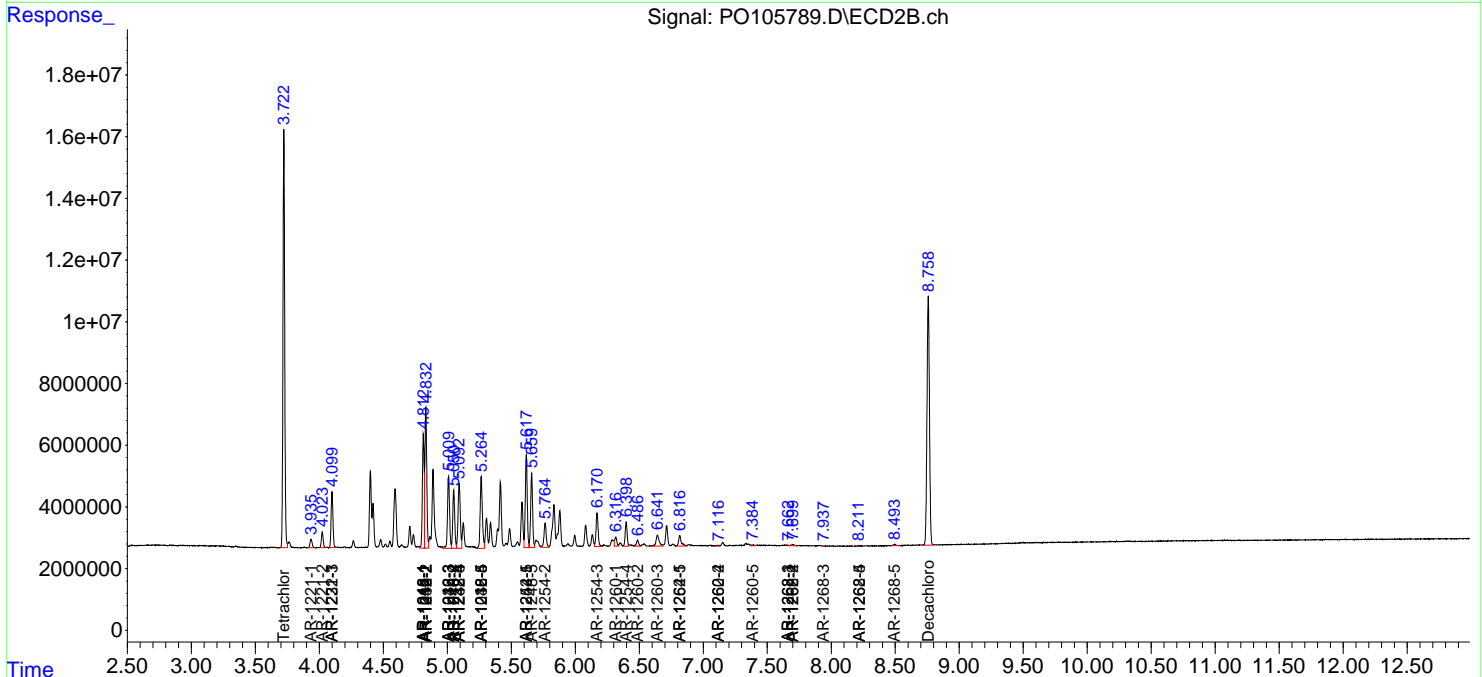
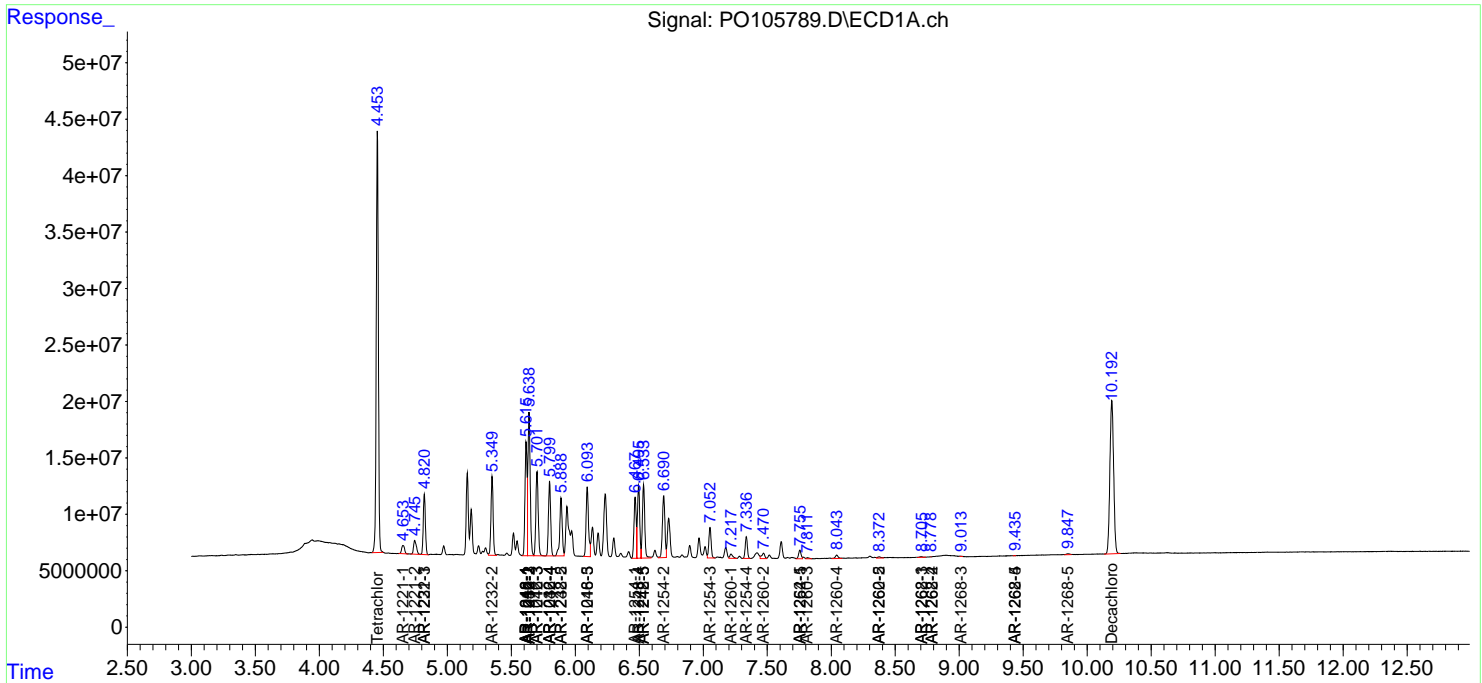
(f)=RT Delta > 1/2 Window (#)=Amounts differ by > 25% (m)=manual int.

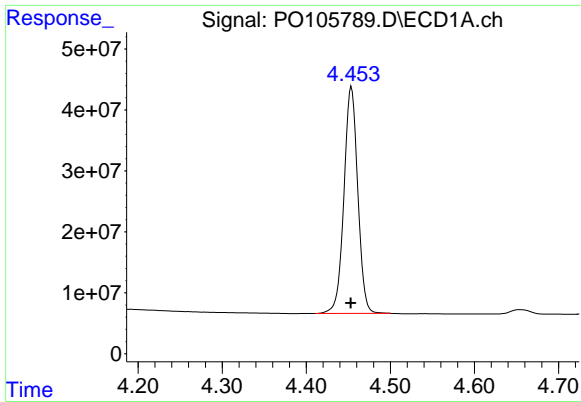
Data Path : Z:\pestpcbsrv\HPCHEM1\ECD_O\Data\P0082324\
 Data File : P0105789.D
 Signal(s) : Signal #1: ECD1A.ch Signal #2: ECD2B.ch
 Acq On : 23 Aug 2024 15:58
 Operator : YP/AJ
 Sample : AR1242CCC500
 Misc :
 ALS Vial : 4 Sample Multiplier: 1

Instrument :
 ECD_O
 ClientSampleId :
 AR1242CCC500

Integration File signal 1: autoint1.e
 Integration File signal 2: autoint2.e
 Quant Time: Aug 24 08:15:40 2024
 Quant Method : Z:\pestpcbsrv\HPCHEM1\ECD_O\methods\P0081524.M
 Quant Title : GC EXTRACTABLES
 QLast Update : Thu Aug 15 11:44:23 2024
 Response via : Initial Calibration
 Integrator: ChemStation

Volume Inj. : 2 µl
 Signal #1 Phase : ZB-MR1 Signal #2 Phase: ZB-MR2
 Signal #1 Info : 30Mx0.32mmx 0.50µ Signal #2 Info : 30M x 0.32mm x 0.25µm

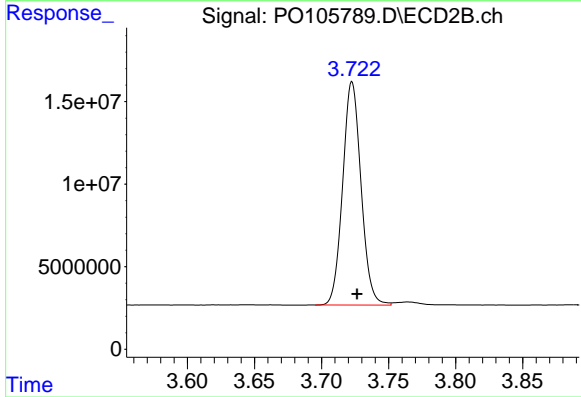




#1 Tetrachloro-m-xylene

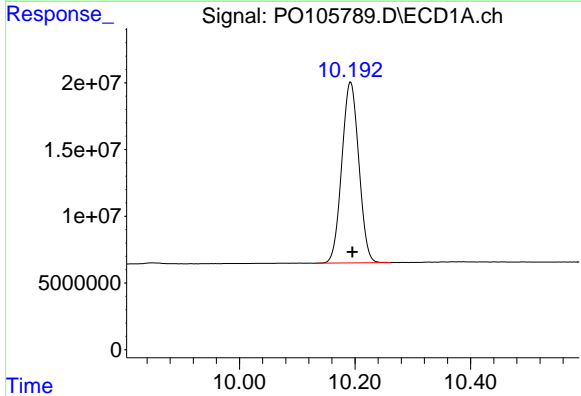
R.T.: 4.454 min
 Delta R.T.: 0.000 min
 Response: 425650442
 Conc: 45.53 ng/ml

Instrument :
 ECD_O
 ClientSampleId :
 AR1242CCC500



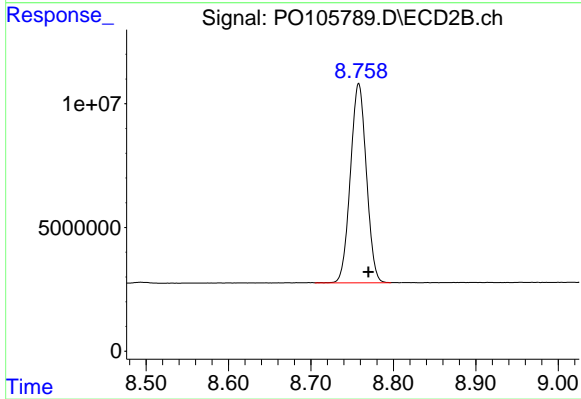
#1 Tetrachloro-m-xylene

R.T.: 3.723 min
 Delta R.T.: -0.004 min
 Response: 128732831
 Conc: 50.47 ng/ml



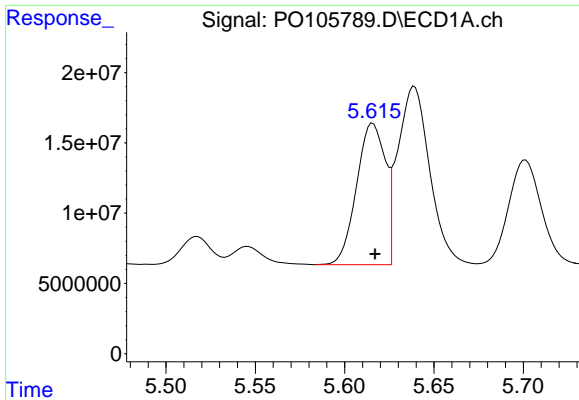
#2 Decachlorobiphenyl

R.T.: 10.192 min
 Delta R.T.: -0.003 min
 Response: 275025129
 Conc: 47.38 ng/ml



#2 Decachlorobiphenyl

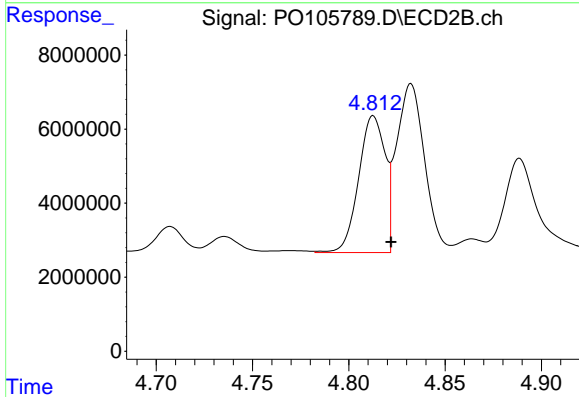
R.T.: 8.758 min
 Delta R.T.: -0.012 min
 Response: 108419610
 Conc: 54.94 ng/ml



#3 AR-1016-1

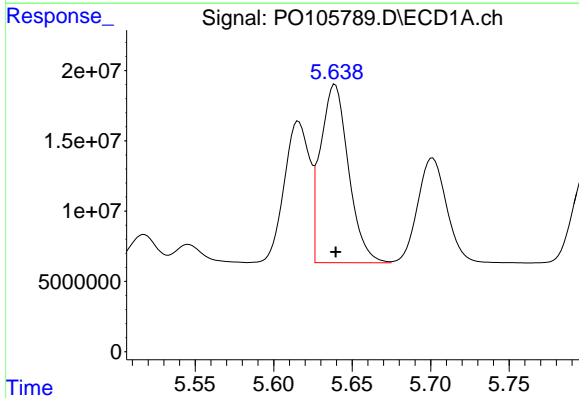
R.T.: 5.616 min
 Delta R.T.: -0.001 min
 Response: 112511541
 Conc: 361.48 ng/ml

Instrument :
 ECD_O
 ClientSampleId :
 AR1242CCC500



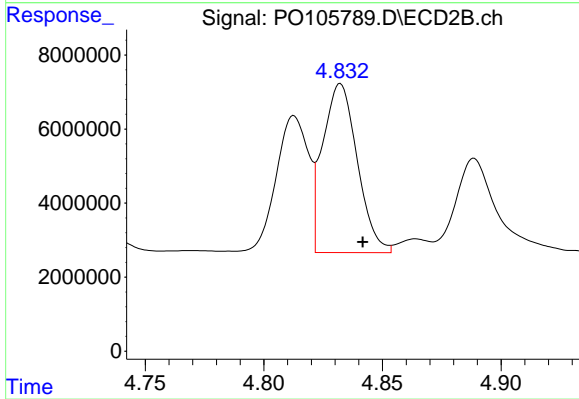
#3 AR-1016-1

R.T.: 4.813 min
 Delta R.T.: -0.009 min
 Response: 35289540
 Conc: 404.65 ng/ml



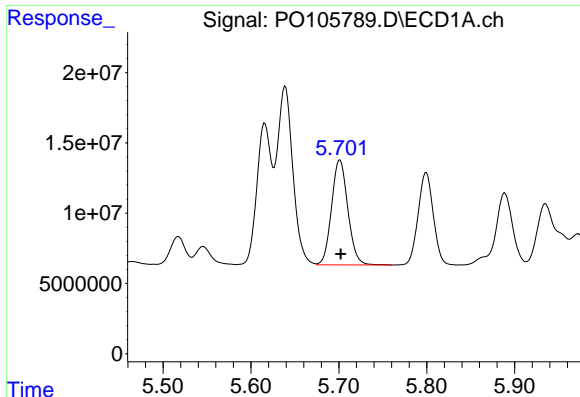
#4 AR-1016-2

R.T.: 5.639 min
 Delta R.T.: 0.000 min
 Response: 157870062
 Conc: 363.79 ng/ml



#4 AR-1016-2

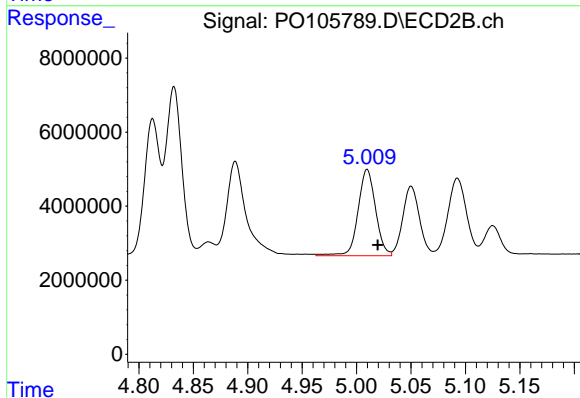
R.T.: 4.832 min
 Delta R.T.: -0.009 min
 Response: 46275116
 Conc: 394.23 ng/ml



#5 AR-1016-3

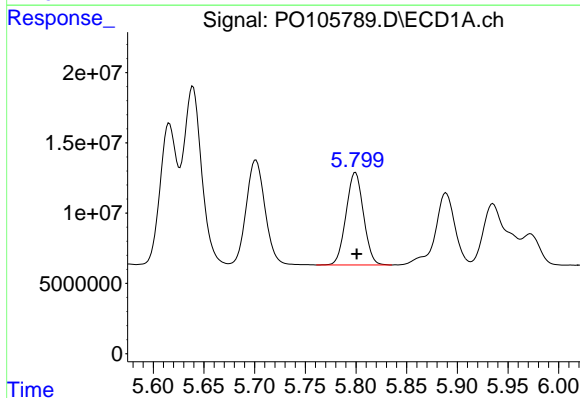
R.T.: 5.701 min
 Delta R.T.: 0.000 min
 Response: 95995838
 Conc: 361.08 ng/ml

Instrument :
 ECD_O
 ClientSampleId :
 AR1242CCC500



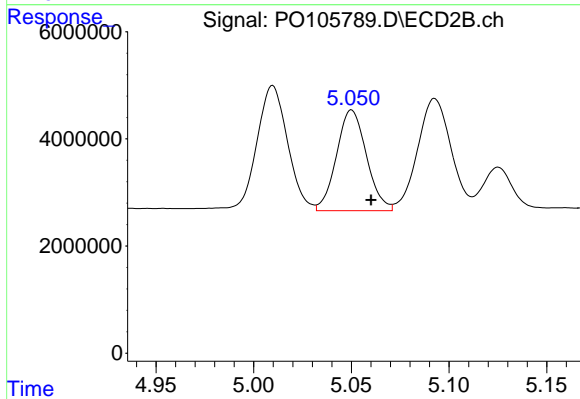
#5 AR-1016-3

R.T.: 5.010 min
 Delta R.T.: -0.010 min
 Response: 26192482
 Conc: 423.69 ng/ml



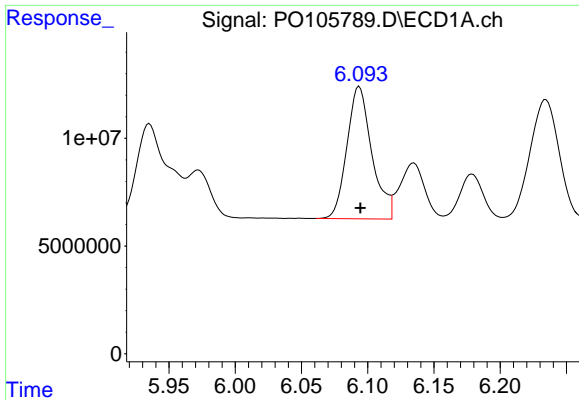
#6 AR-1016-4

R.T.: 5.800 min
 Delta R.T.: -0.001 min
 Response: 78687481
 Conc: 357.46 ng/ml



#6 AR-1016-4

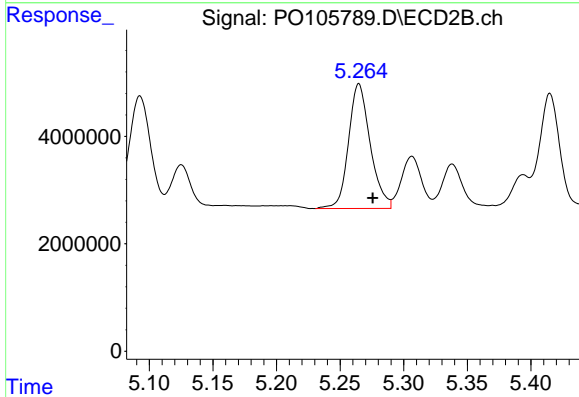
R.T.: 5.050 min
 Delta R.T.: -0.010 min
 Response: 20103858
 Conc: 424.07 ng/ml



#7 AR-1016-5

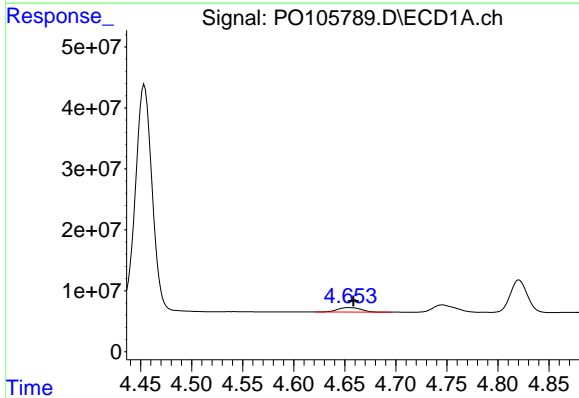
R.T.: 6.094 min
 Delta R.T.: 0.000 min
 Response: 80426275
 Conc: 385.18 ng/ml

Instrument :
 ECD_O
 ClientSampleId :
 AR1242CCC500



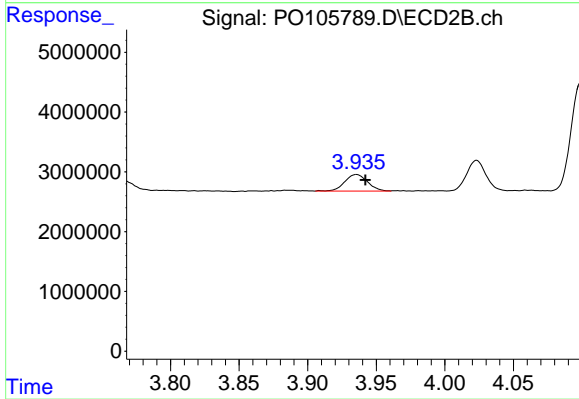
#7 AR-1016-5

R.T.: 5.265 min
 Delta R.T.: -0.011 min
 Response: 27573613
 Conc: 434.21 ng/ml



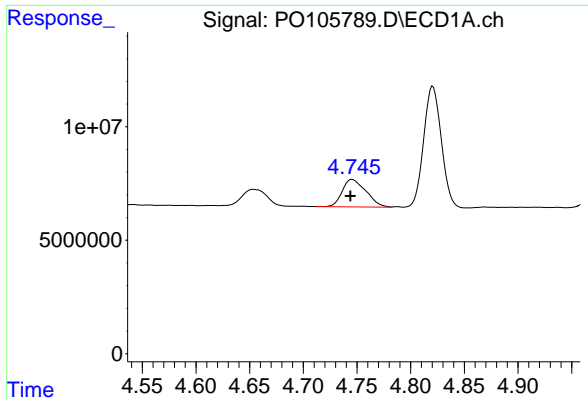
#8 AR-1221-1

R.T.: 4.654 min
 Delta R.T.: -0.005 min
 Response: 11641372
 Conc: 102.81 ng/ml



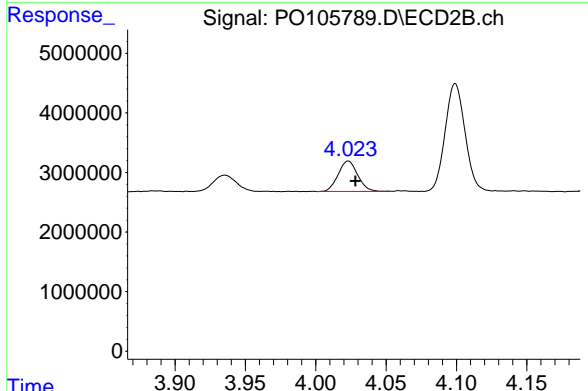
#8 AR-1221-1

R.T.: 3.936 min
 Delta R.T.: -0.006 min
 Response: 3225106
 Conc: 110.15 ng/ml

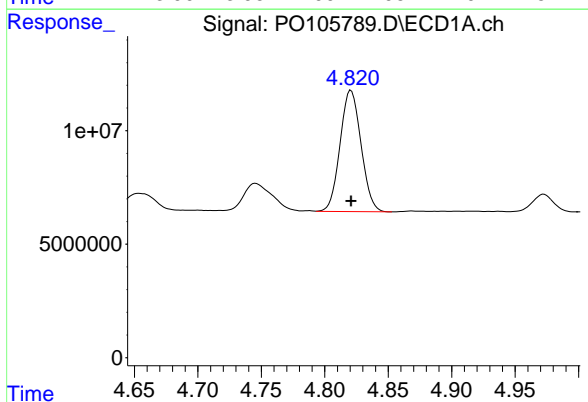


#9 AR-1221-2
 R.T.: 4.746 min
 Delta R.T.: 0.002 min
 Response: 18708628
 Conc: 211.02 ng/ml

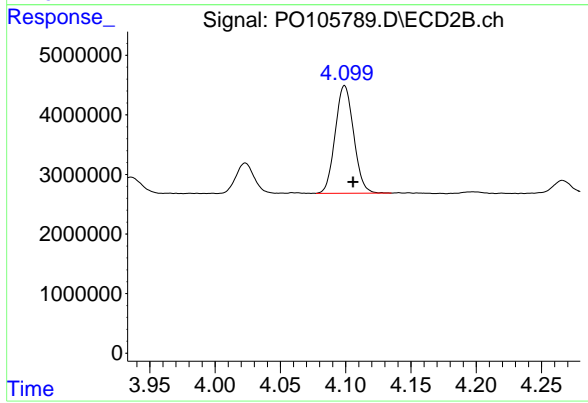
Instrument :
 ECD_O
 ClientSampleId :
 AR1242CCC500



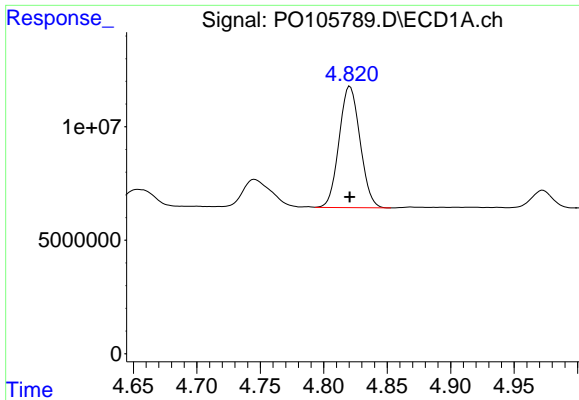
#9 AR-1221-2
 R.T.: 4.023 min
 Delta R.T.: -0.005 min
 Response: 4962230
 Conc: 228.09 ng/ml



#10 AR-1221-3
 R.T.: 4.821 min
 Delta R.T.: 0.000 min
 Response: 61436172
 Conc: 240.51 ng/ml



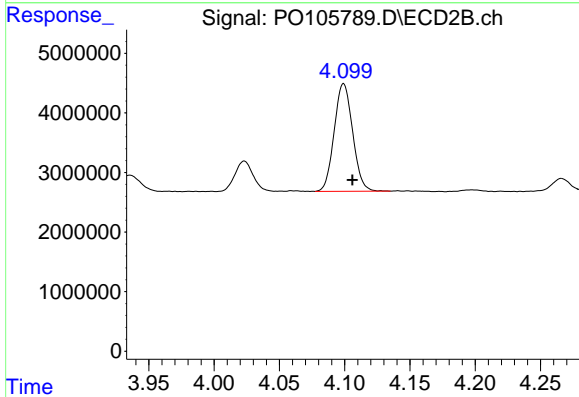
#10 AR-1221-3
 R.T.: 4.099 min
 Delta R.T.: -0.006 min
 Response: 17812881
 Conc: 258.97 ng/ml



#11 AR-1232-1

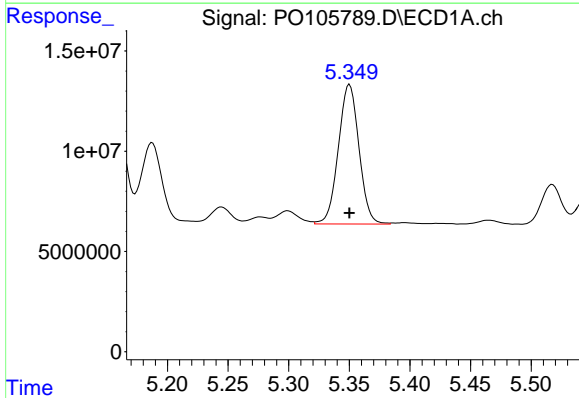
R.T.: 4.821 min
 Delta R.T.: 0.000 min
 Response: 61436172
 Conc: 294.62 ng/ml

Instrument :
 ECD_O
 ClientSampleId :
 AR1242CCC500



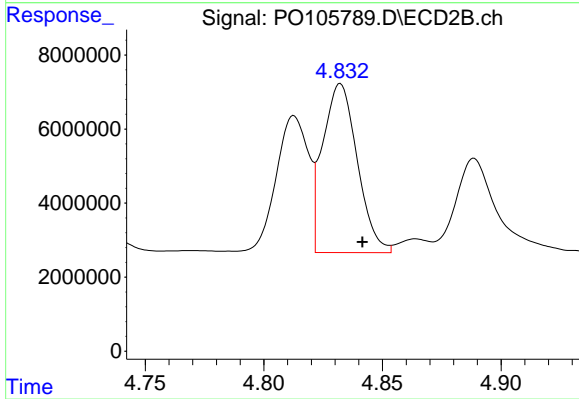
#11 AR-1232-1

R.T.: 4.099 min
 Delta R.T.: -0.007 min
 Response: 17812881
 Conc: 321.85 ng/ml



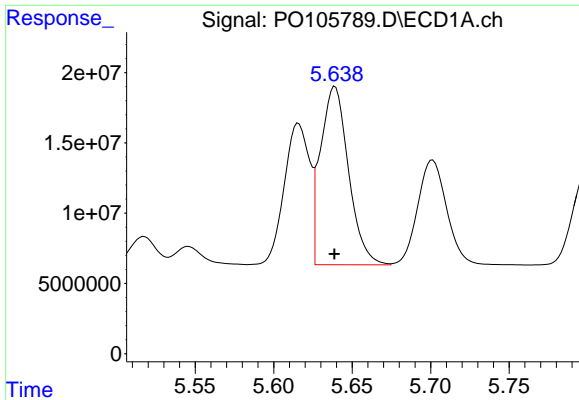
#12 AR-1232-2

R.T.: 5.350 min
 Delta R.T.: 0.000 min
 Response: 82369290
 Conc: 766.08 ng/ml



#12 AR-1232-2

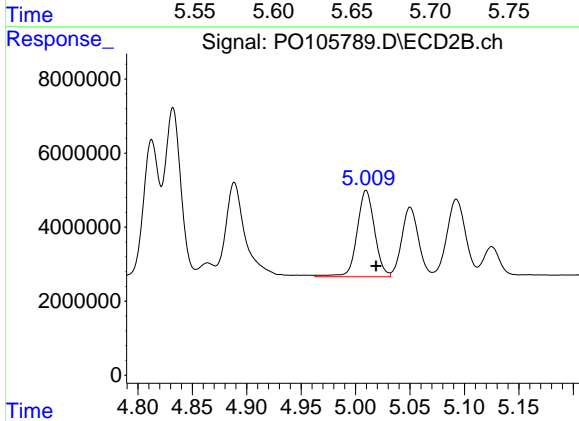
R.T.: 4.832 min
 Delta R.T.: -0.009 min
 Response: 46275116
 Conc: 890.20 ng/ml



#13 AR-1232-3

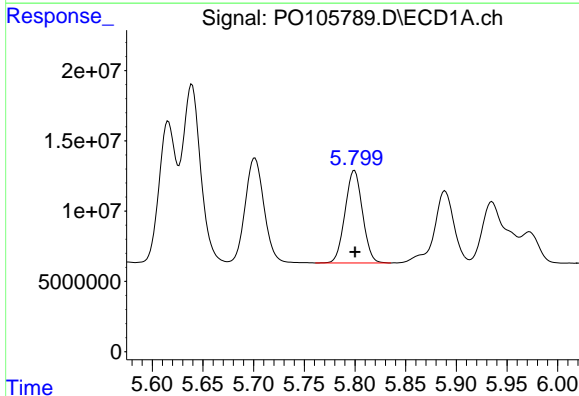
R.T.: 5.639 min
 Delta R.T.: 0.000 min
 Response: 157870062
 Conc: 801.73 ng/ml

Instrument :
 ECD_O
 ClientSampleId :
 AR1242CCC500



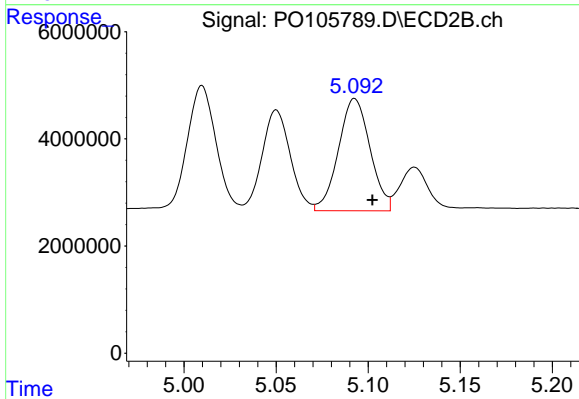
#13 AR-1232-3

R.T.: 5.010 min
 Delta R.T.: -0.009 min
 Response: 26192482
 Conc: 954.37 ng/ml



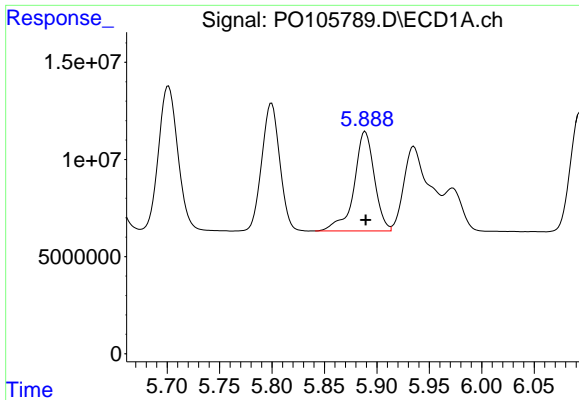
#14 AR-1232-4

R.T.: 5.800 min
 Delta R.T.: 0.000 min
 Response: 78687481
 Conc: 809.34 ng/ml



#14 AR-1232-4

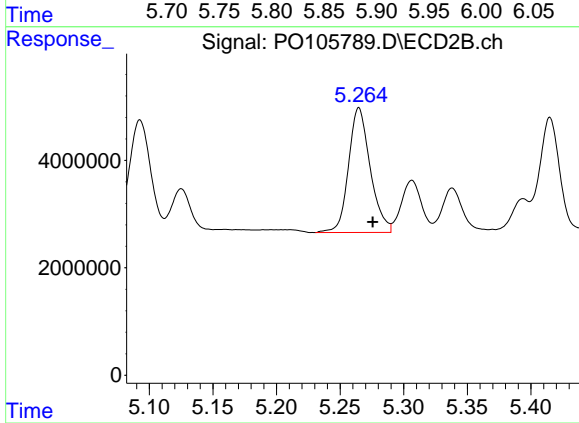
R.T.: 5.093 min
 Delta R.T.: -0.010 min
 Response: 25035126
 Conc: 1005.30 ng/ml



#15 AR-1232-5

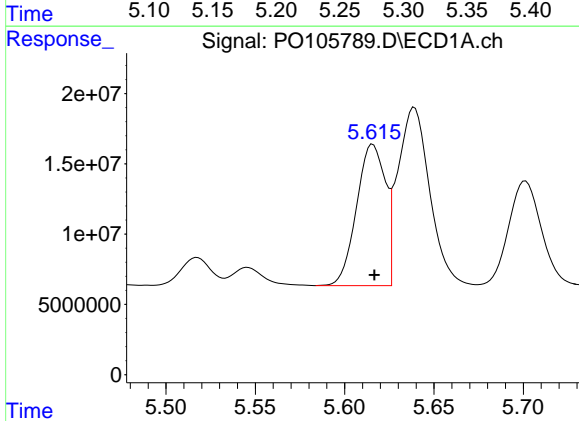
R.T.: 5.889 min
 Delta R.T.: 0.000 min
 Response: 69026127
 Conc: 948.84 ng/ml

Instrument :
 ECD_O
 ClientSampleId :
 AR1242CCC500



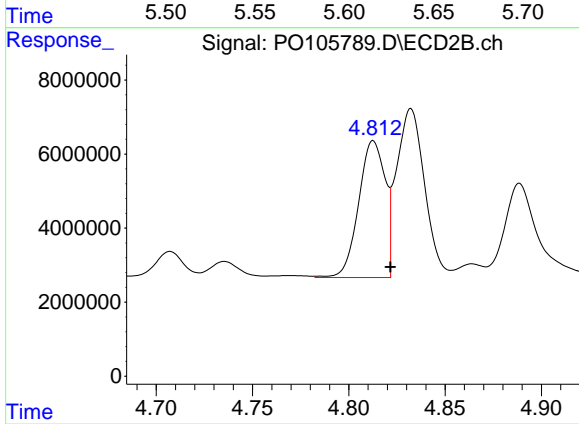
#15 AR-1232-5

R.T.: 5.265 min
 Delta R.T.: -0.011 min
 Response: 27573613
 Conc: 975.13 ng/ml



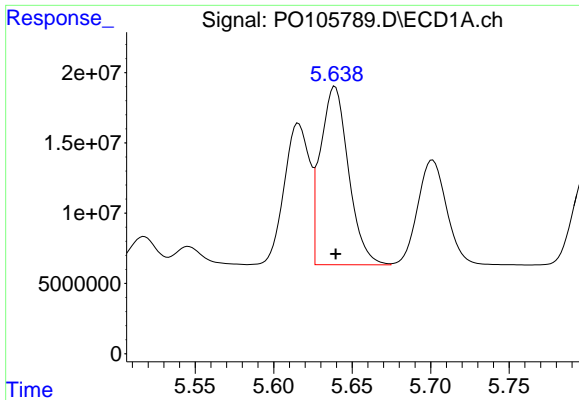
#16 AR-1242-1

R.T.: 5.616 min
 Delta R.T.: 0.000 min
 Response: 112511541
 Conc: 451.85 ng/ml



#16 AR-1242-1

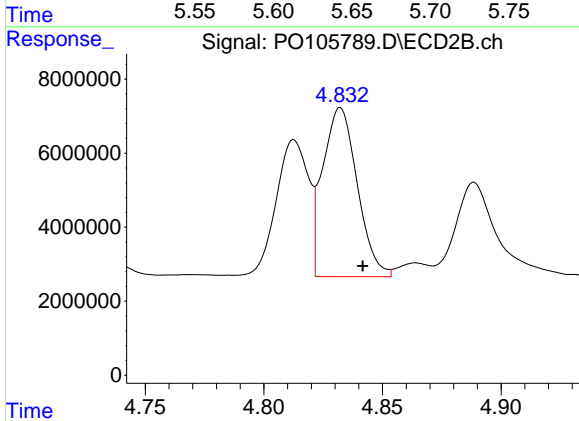
R.T.: 4.813 min
 Delta R.T.: -0.009 min
 Response: 35289540
 Conc: 508.54 ng/ml



#17 AR-1242-2

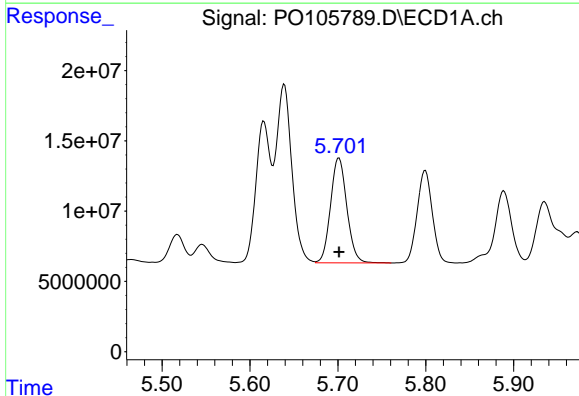
R.T.: 5.639 min
 Delta R.T.: 0.000 min
 Response: 157870062
 Conc: 462.85 ng/ml

Instrument :
 ECD_O
 ClientSampleId :
 AR1242CCC500



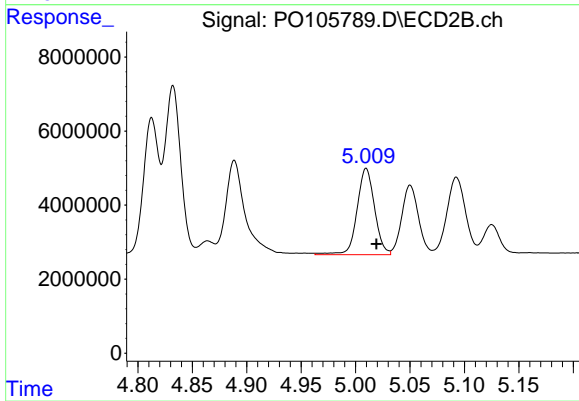
#17 AR-1242-2

R.T.: 4.832 min
 Delta R.T.: -0.009 min
 Response: 46275116
 Conc: 504.02 ng/ml



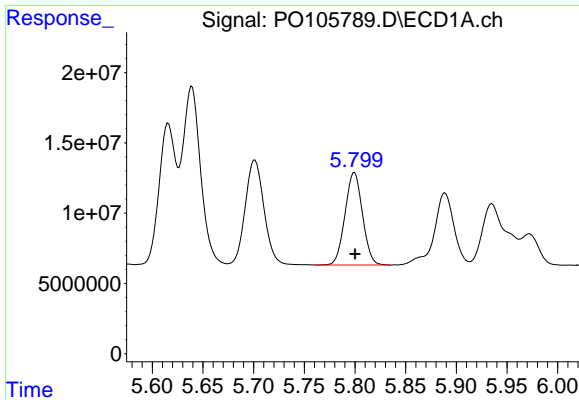
#18 AR-1242-3

R.T.: 5.701 min
 Delta R.T.: 0.000 min
 Response: 95995838
 Conc: 457.70 ng/ml



#18 AR-1242-3

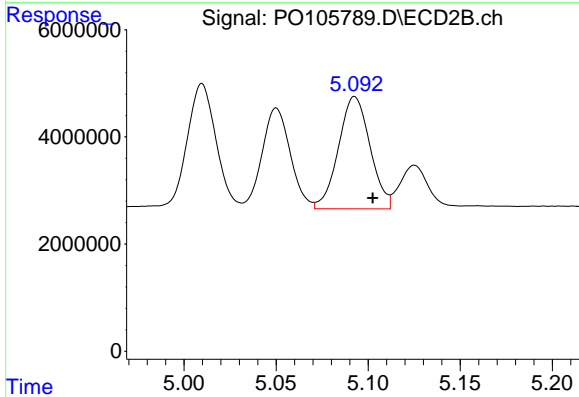
R.T.: 5.010 min
 Delta R.T.: -0.009 min
 Response: 26192482
 Conc: 535.47 ng/ml



#19 AR-1242-4

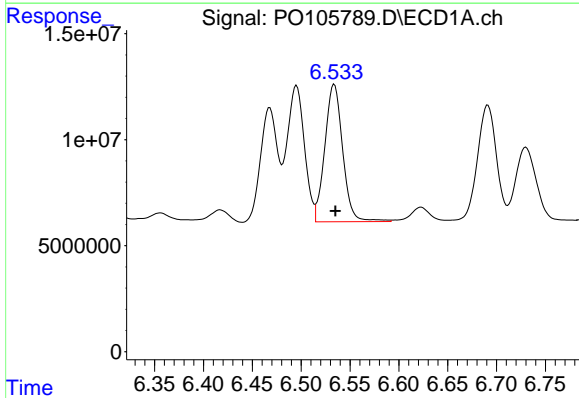
R.T.: 5.800 min
 Delta R.T.: 0.000 min
 Response: 78687481
 Conc: 449.64 ng/ml

Instrument :
 ECD_O
 ClientSampleId :
 AR1242CCC500



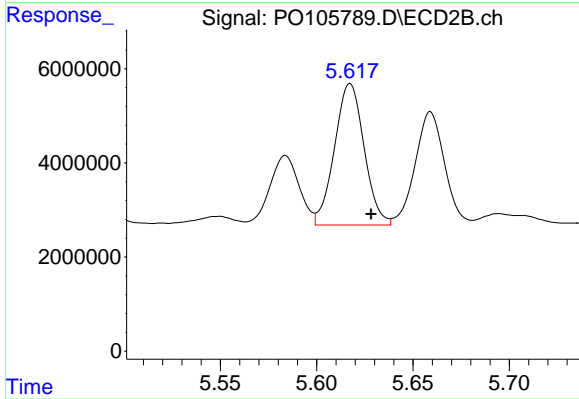
#19 AR-1242-4

R.T.: 5.093 min
 Delta R.T.: -0.010 min
 Response: 25035126
 Conc: 507.39 ng/ml



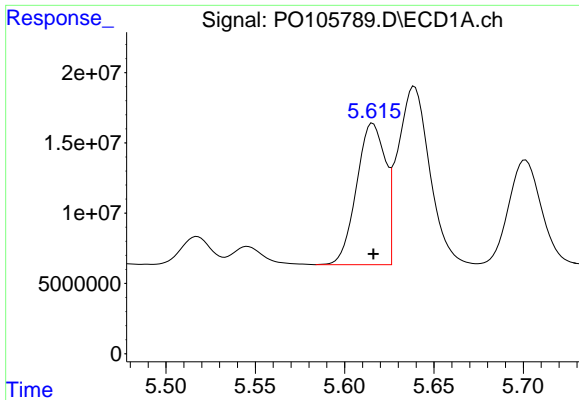
#20 AR-1242-5

R.T.: 6.534 min
 Delta R.T.: -0.001 min
 Response: 82653669
 Conc: 458.78 ng/ml



#20 AR-1242-5

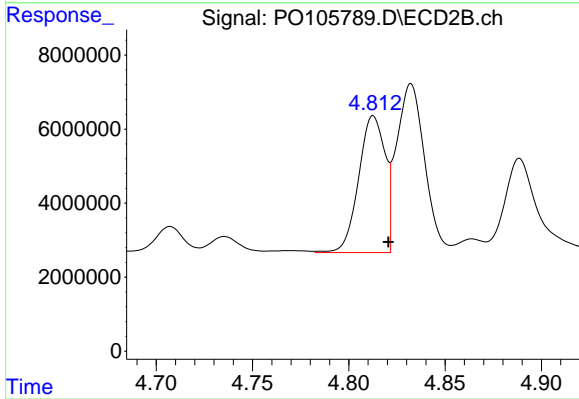
R.T.: 5.617 min
 Delta R.T.: -0.011 min
 Response: 32117117
 Conc: 512.85 ng/ml



#21 AR-1248-1

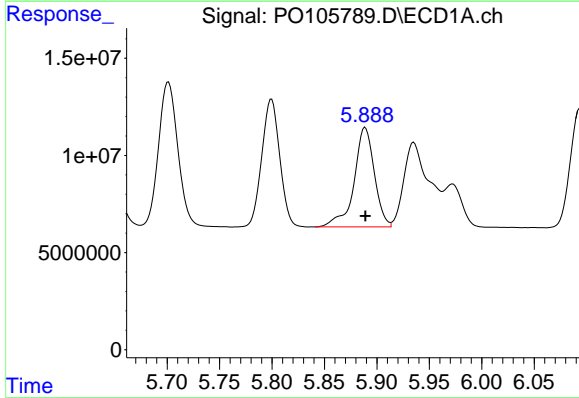
R.T.: 5.616 min
 Delta R.T.: 0.000 min
 Response: 112511541
 Conc: 583.94 ng/ml

Instrument :
 ECD_O
 ClientSampleId :
 AR1242CCC500



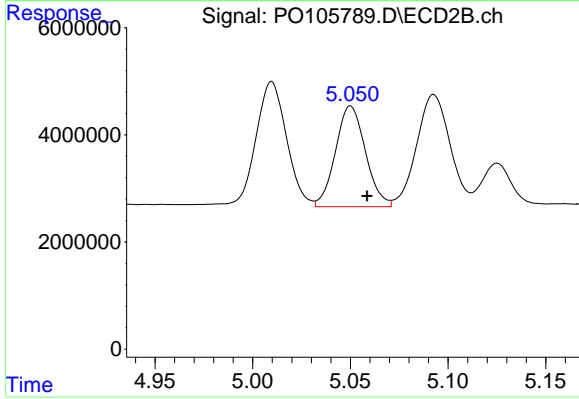
#21 AR-1248-1

R.T.: 4.813 min
 Delta R.T.: -0.008 min
 Response: 35289540
 Conc: 665.18 ng/ml



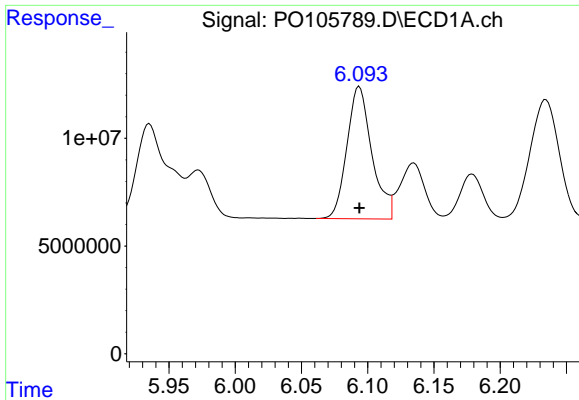
#22 AR-1248-2

R.T.: 5.889 min
 Delta R.T.: 0.000 min
 Response: 69026127
 Conc: 262.22 ng/ml



#22 AR-1248-2

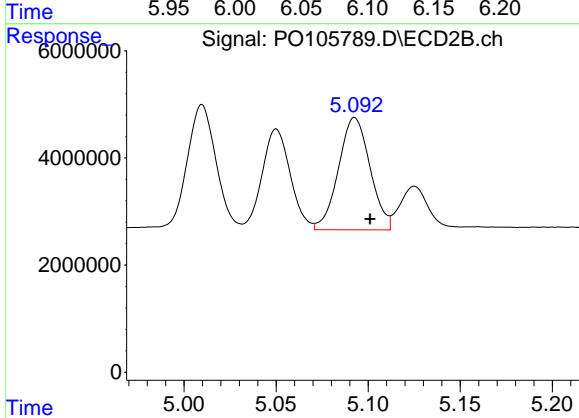
R.T.: 5.050 min
 Delta R.T.: -0.008 min
 Response: 20103858
 Conc: 288.26 ng/ml



#23 AR-1248-3

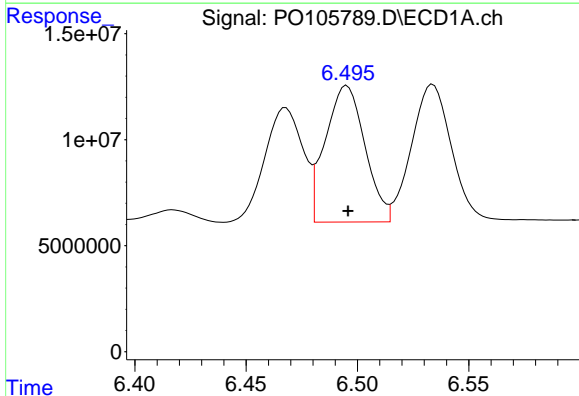
R.T.: 6.094 min
 Delta R.T.: 0.000 min
 Response: 80426275
 Conc: 274.16 ng/ml

Instrument :
 ECD_O
 ClientSampleId :
 AR1242CCC500



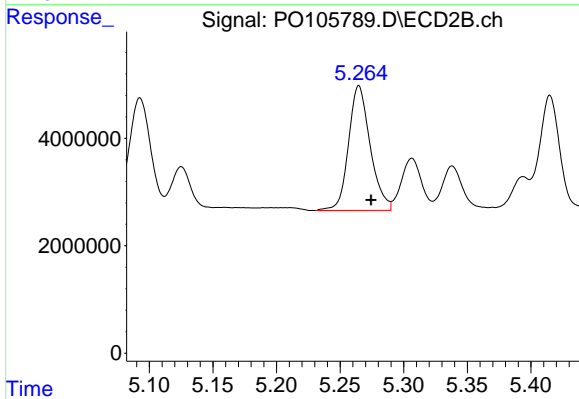
#23 AR-1248-3

R.T.: 5.093 min
 Delta R.T.: -0.008 min
 Response: 25035126
 Conc: 336.97 ng/ml



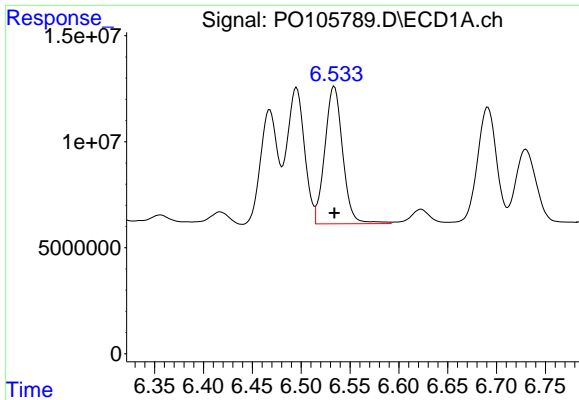
#24 AR-1248-4

R.T.: 6.495 min
 Delta R.T.: 0.000 min
 Response: 79623999
 Conc: 245.44 ng/ml



#24 AR-1248-4

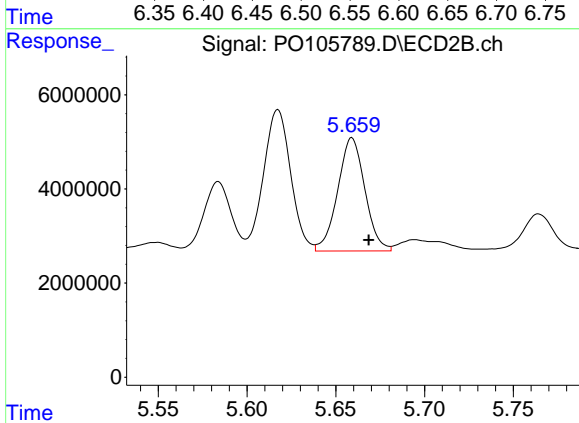
R.T.: 5.265 min
 Delta R.T.: -0.010 min
 Response: 27573613
 Conc: 309.98 ng/ml



#25 AR-1248-5

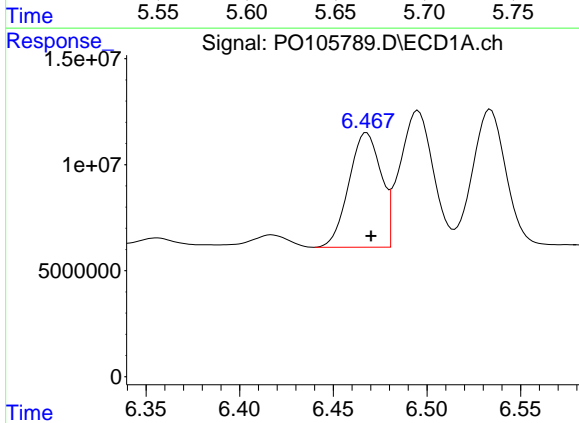
R.T.: 6.534 min
 Delta R.T.: 0.000 min
 Response: 82653669
 Conc: 264.78 ng/ml

Instrument :
 ECD_O
 ClientSampleId :
 AR1242CCC500



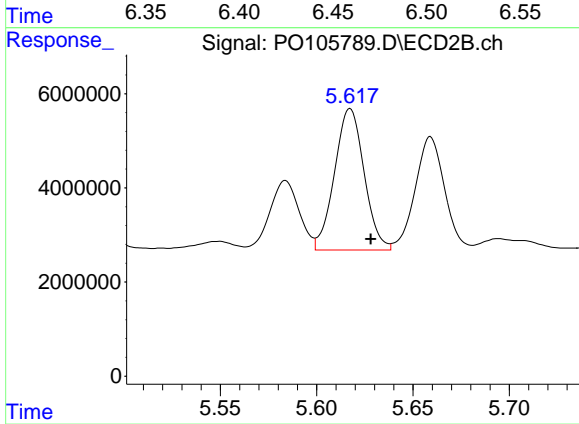
#25 AR-1248-5

R.T.: 5.659 min
 Delta R.T.: -0.009 min
 Response: 25652265
 Conc: 292.70 ng/ml



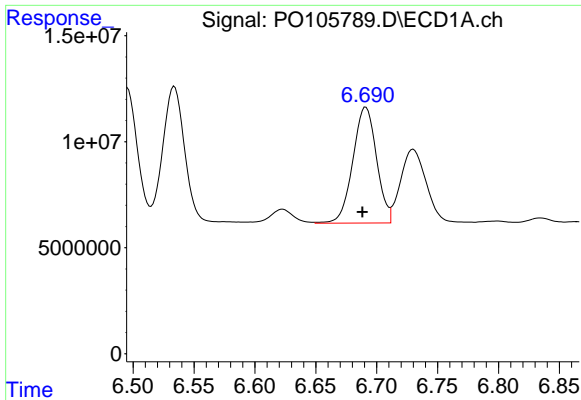
#26 AR-1254-1

R.T.: 6.468 min
 Delta R.T.: -0.002 min
 Response: 64518860
 Conc: 203.87 ng/ml



#26 AR-1254-1

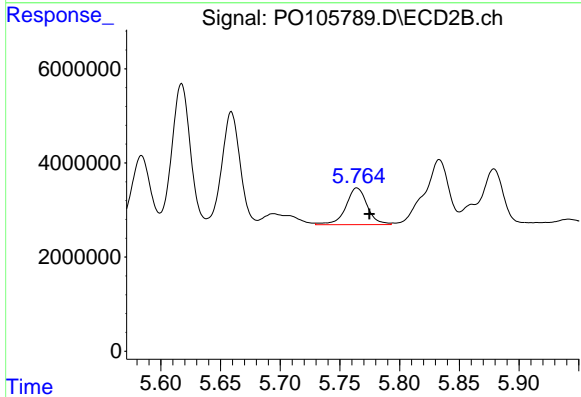
R.T.: 5.617 min
 Delta R.T.: -0.011 min
 Response: 32117117
 Conc: 255.18 ng/ml



#27 AR-1254-2

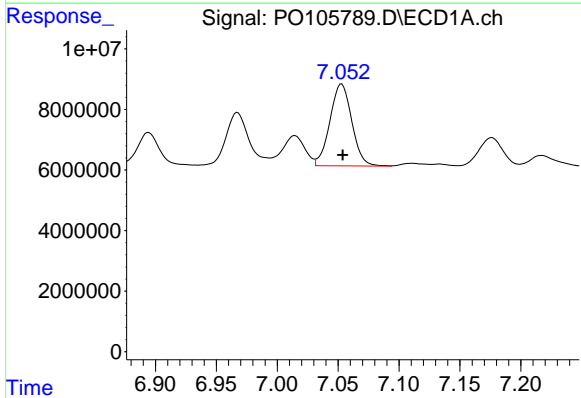
R.T.: 6.691 min
 Delta R.T.: 0.003 min
 Response: 74148103
 Conc: 157.41 ng/ml

Instrument :
 ECD_O
 ClientSampleId :
 AR1242CCC500



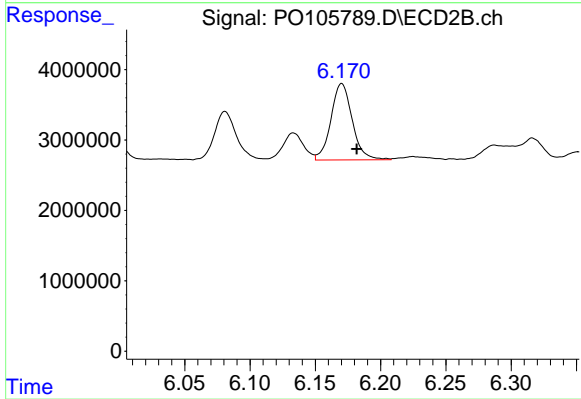
#27 AR-1254-2

R.T.: 5.764 min
 Delta R.T.: -0.011 min
 Response: 9718936
 Conc: 87.22 ng/ml



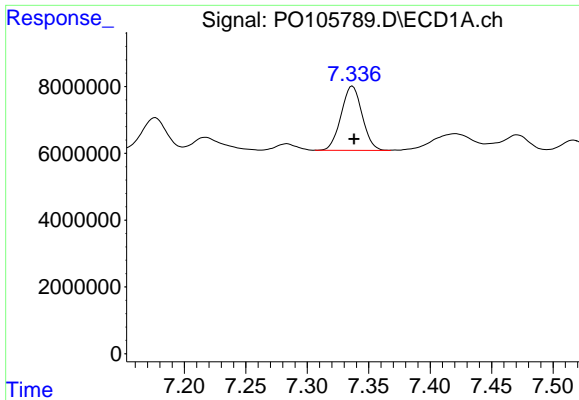
#28 AR-1254-3

R.T.: 7.053 min
 Delta R.T.: 0.000 min
 Response: 33842358
 Conc: 70.62 ng/ml



#28 AR-1254-3

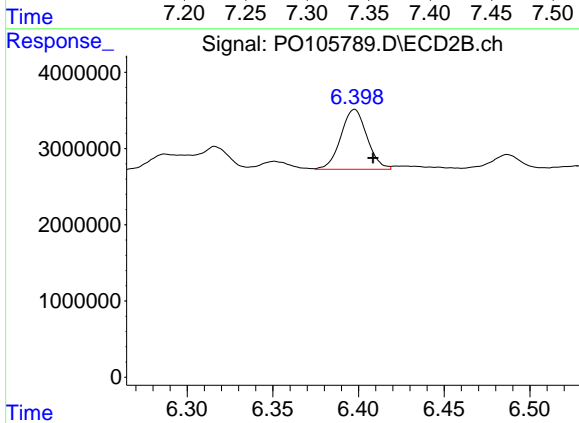
R.T.: 6.170 min
 Delta R.T.: -0.012 min
 Response: 12333204
 Conc: 68.73 ng/ml



#29 AR-1254-4

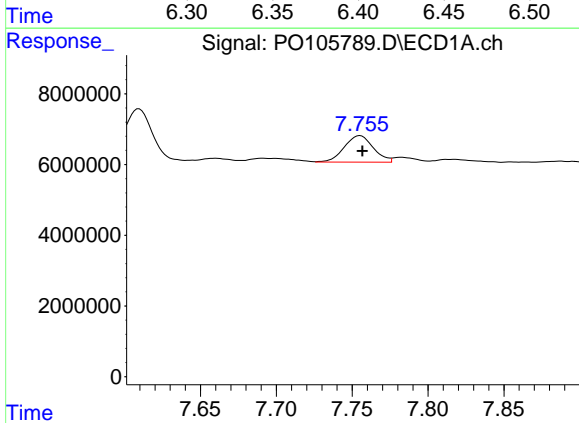
R.T.: 7.337 min
 Delta R.T.: -0.001 min
 Response: 22915638
 Conc: 65.08 ng/ml

Instrument :
 ECD_O
 ClientSampleId :
 AR1242CCC500



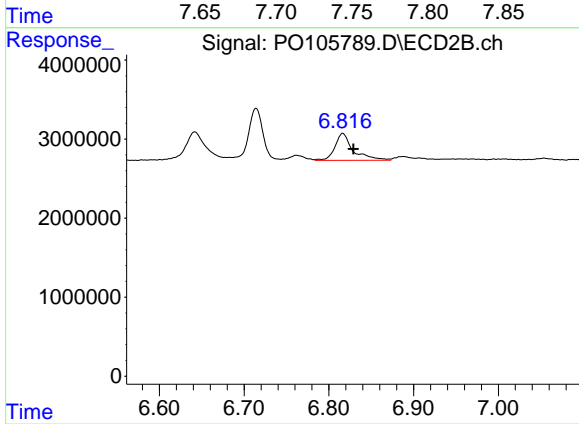
#29 AR-1254-4

R.T.: 6.398 min
 Delta R.T.: -0.011 min
 Response: 8343008
 Conc: 75.13 ng/ml



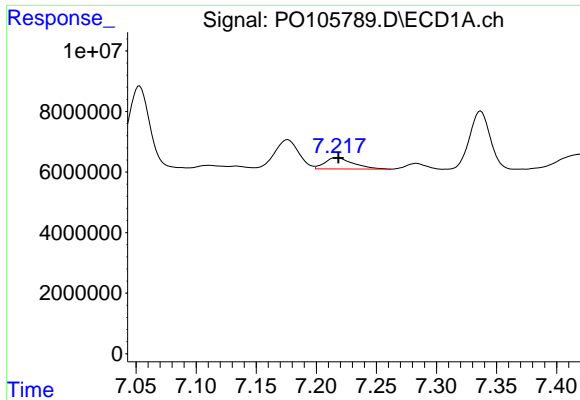
#30 AR-1254-5

R.T.: 7.755 min
 Delta R.T.: -0.001 min
 Response: 9983790
 Conc: 26.18 ng/ml



#30 AR-1254-5

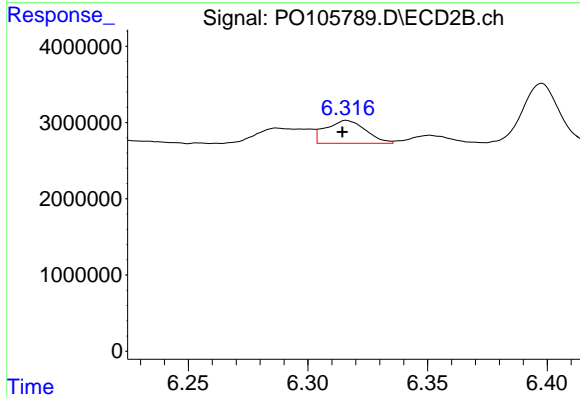
R.T.: 6.816 min
 Delta R.T.: -0.013 min
 Response: 5090285
 Conc: 31.65 ng/ml



#31 AR-1260-1

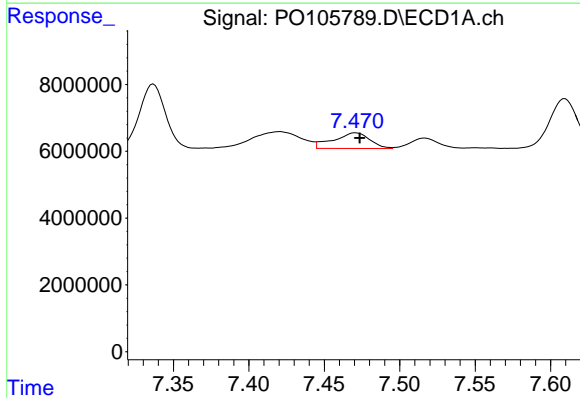
R.T.: 7.217 min
 Delta R.T.: -0.001 min
 Response: 6106932
 Conc: 16.53 ng/ml

Instrument :
 ECD_O
 ClientSampleId :
 AR1242CCC500



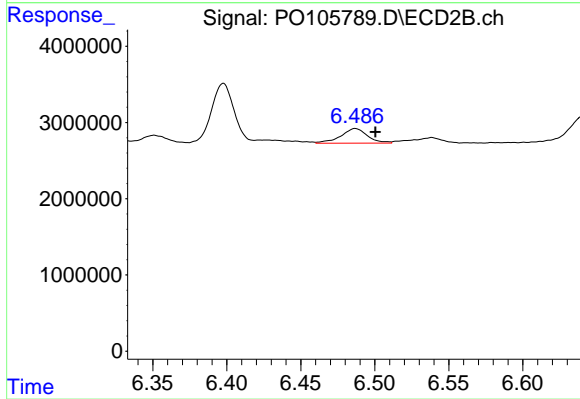
#31 AR-1260-1

R.T.: 6.316 min
 Delta R.T.: 0.002 min
 Response: 3493099
 Conc: 29.49 ng/ml



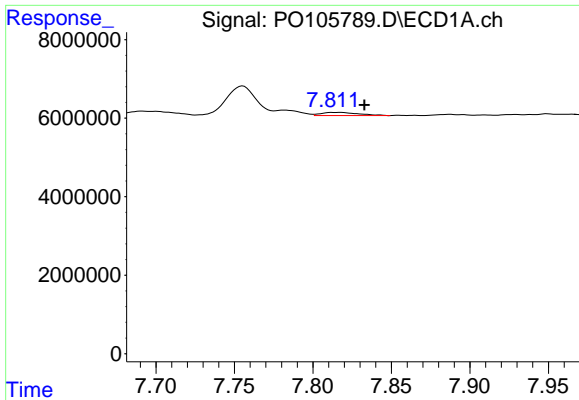
#32 AR-1260-2

R.T.: 7.471 min
 Delta R.T.: -0.003 min
 Response: 7925130
 Conc: 18.35 ng/ml



#32 AR-1260-2

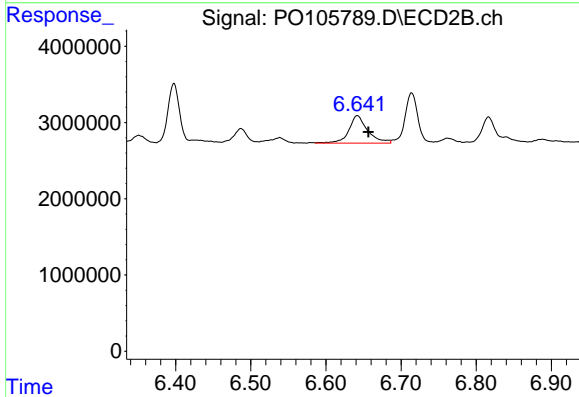
R.T.: 6.487 min
 Delta R.T.: -0.013 min
 Response: 2405454
 Conc: 16.40 ng/ml



#33 AR-1260-3

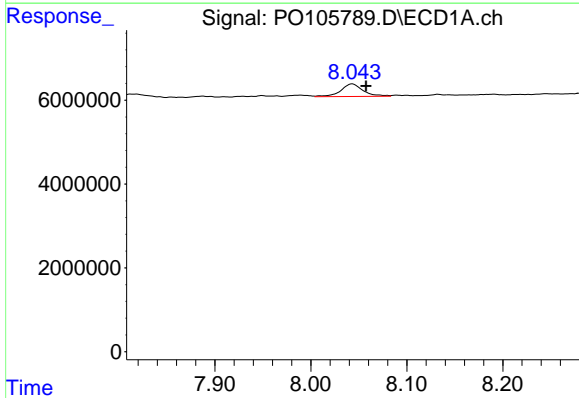
R.T.: 7.812 min
 Delta R.T.: -0.020 min
 Response: 1339612
 Conc: 4.95 ng/ml

Instrument :
 ECD_O
 ClientSampleId :
 AR1242CCC500



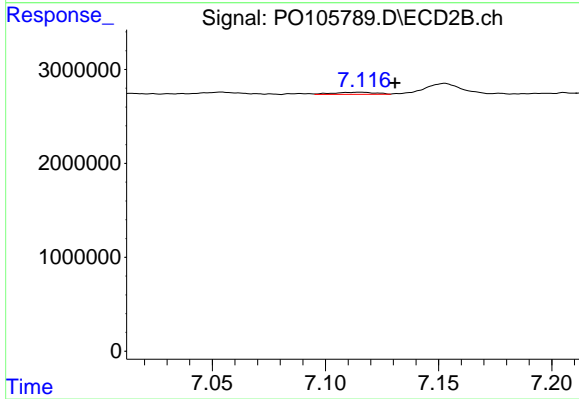
#33 AR-1260-3

R.T.: 6.642 min
 Delta R.T.: -0.015 min
 Response: 6285009
 Conc: 40.92 ng/ml



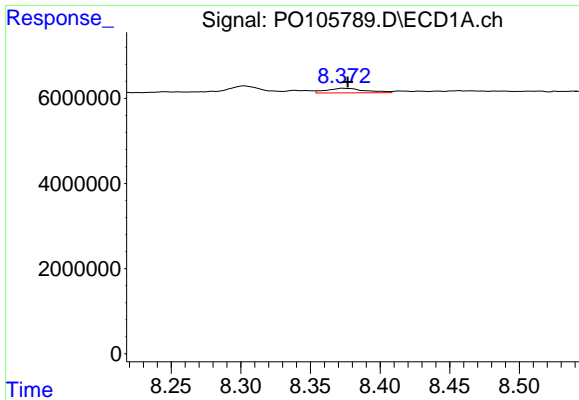
#34 AR-1260-4

R.T.: 8.043 min
 Delta R.T.: -0.015 min
 Response: 4870358
 Conc: 15.30 ng/ml



#34 AR-1260-4

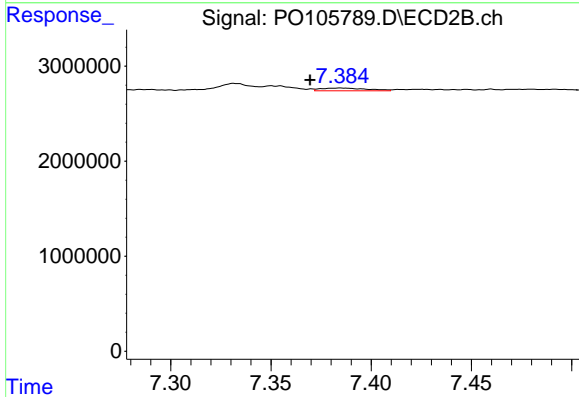
R.T.: 7.116 min
 Delta R.T.: -0.015 min
 Response: 296266
 Conc: 3.02 ng/ml



#35 AR-1260-5

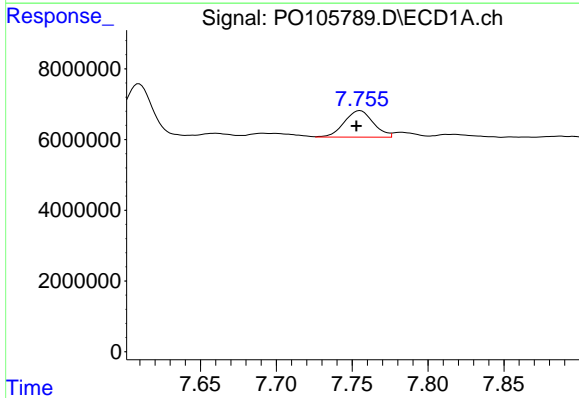
R.T.: 8.373 min
 Delta R.T.: -0.003 min
 Response: 2031825
 Conc: 3.26 ng/ml

Instrument :
 ECD_O
 ClientSampleId :
 AR1242CCC500



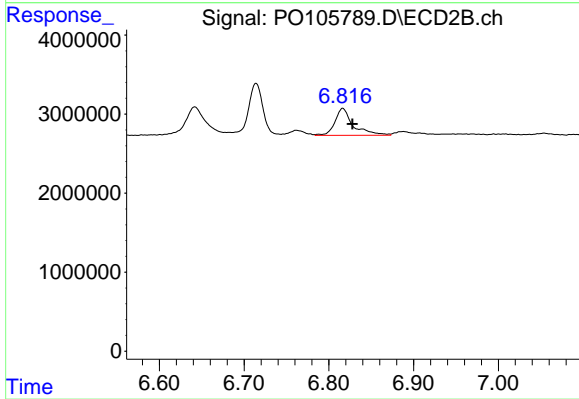
#35 AR-1260-5

R.T.: 7.385 min
 Delta R.T.: 0.016 min
 Response: 467916
 Conc: 1.93 ng/ml



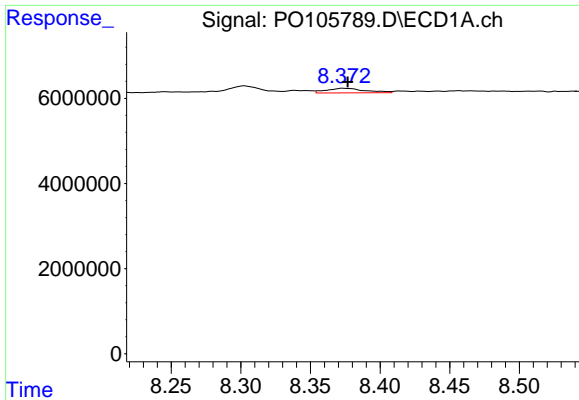
#36 AR-1262-1

R.T.: 7.755 min
 Delta R.T.: 0.003 min
 Response: 9983790
 Conc: 34.54 ng/ml



#36 AR-1262-1

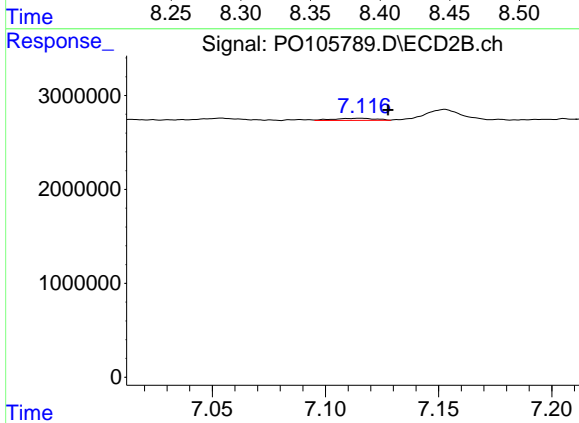
R.T.: 6.816 min
 Delta R.T.: -0.011 min
 Response: 5090285
 Conc: 62.41 ng/ml



#37 AR-1262-2

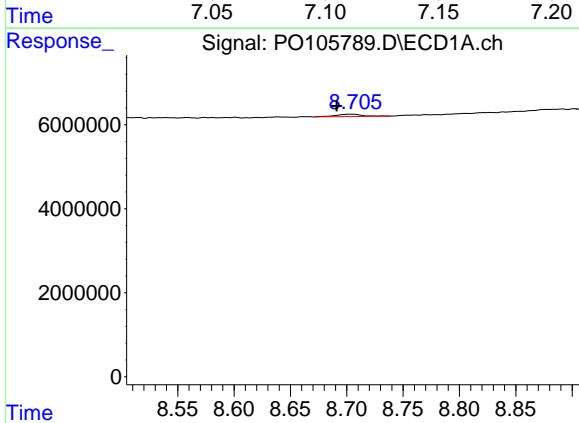
R.T.: 8.373 min
 Delta R.T.: -0.003 min
 Response: 2031825
 Conc: 2.65 ng/ml

Instrument :
 ECD_O
 ClientSampleId :
 AR1242CCC500



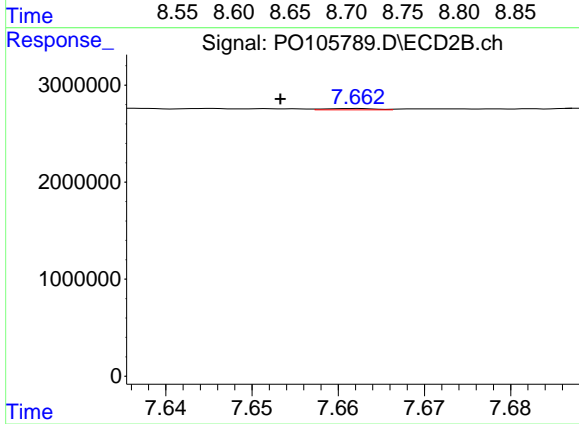
#37 AR-1262-2

R.T.: 7.116 min
 Delta R.T.: -0.012 min
 Response: 296266
 Conc: 2.11 ng/ml



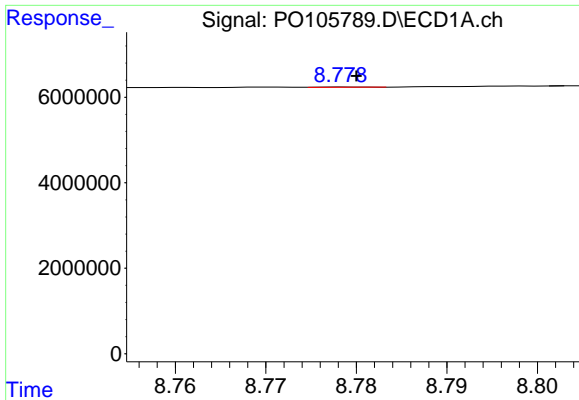
#38 AR-1262-3

R.T.: 8.705 min
 Delta R.T.: 0.014 min
 Response: 907970
 Conc: 1.80 ng/ml



#38 AR-1262-3

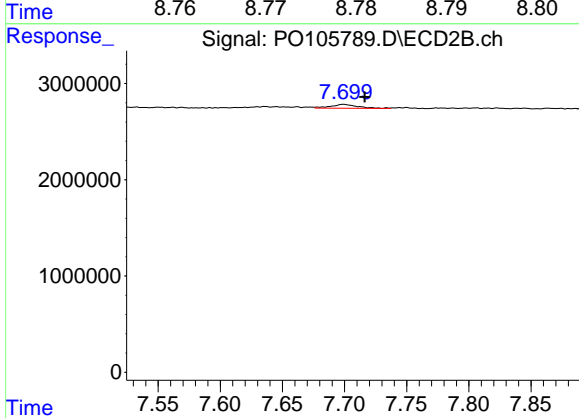
R.T.: 7.662 min
 Delta R.T.: 0.009 min
 Response: 52120
 Conc: 0.48 ng/ml



#39 AR-1262-4

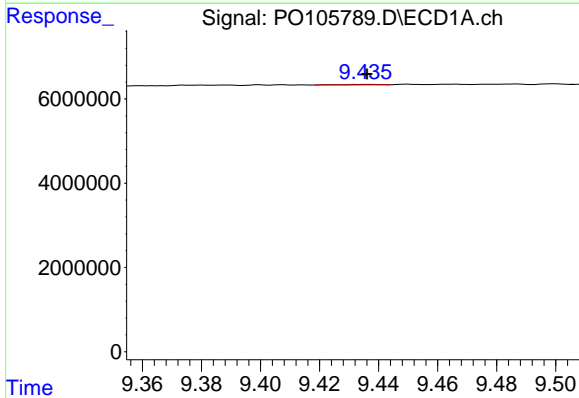
R.T.: 8.780 min
 Delta R.T.: 0.000 min
 Response: 24606
 Conc: 0.07 ng/ml

Instrument :
 ECD_O
 ClientSampleId :
 AR1242CCC500



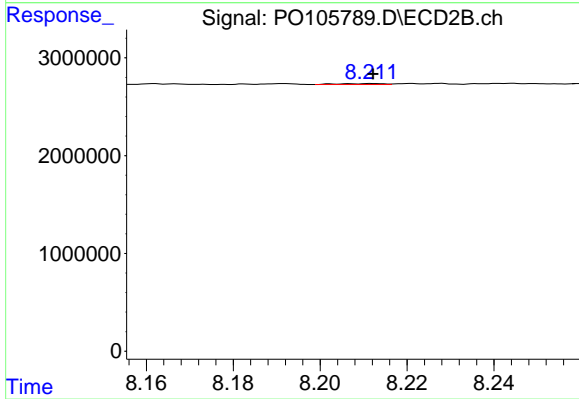
#39 AR-1262-4

R.T.: 7.699 min
 Delta R.T.: -0.017 min
 Response: 585602
 Conc: 2.81 ng/ml



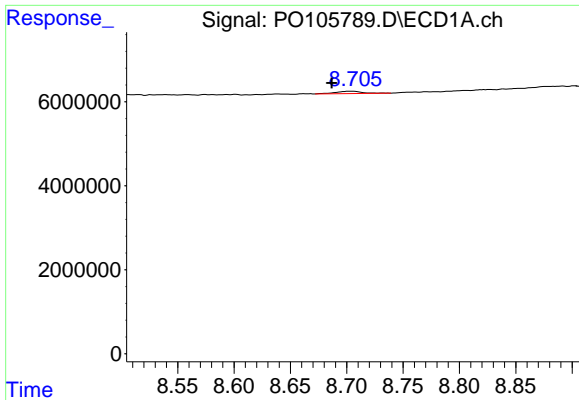
#40 AR-1262-5

R.T.: 9.436 min
 Delta R.T.: 0.000 min
 Response: 116614
 Conc: 0.45 ng/ml



#40 AR-1262-5

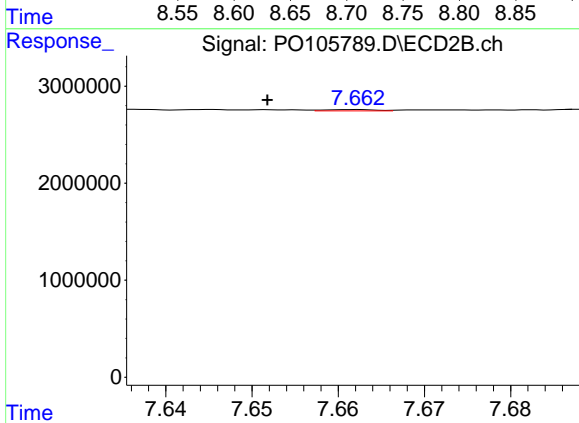
R.T.: 8.212 min
 Delta R.T.: 0.000 min
 Response: 69978
 Conc: 0.75 ng/ml



#41 AR-1268-1

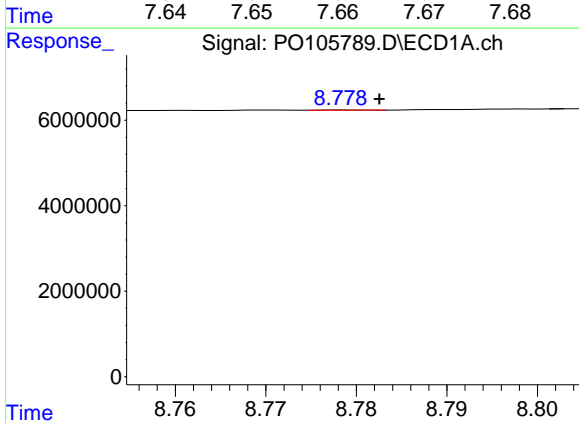
R.T.: 8.705 min
 Delta R.T.: 0.018 min
 Response: 907970
 Conc: 1.08 ng/ml

Instrument :
 ECD_O
 ClientSampleId :
 AR1242CCC500



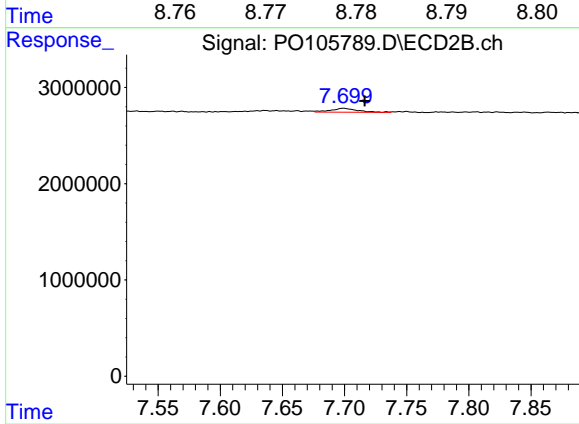
#41 AR-1268-1

R.T.: 7.662 min
 Delta R.T.: 0.010 min
 Response: 52120
 Conc: 0.17 ng/ml



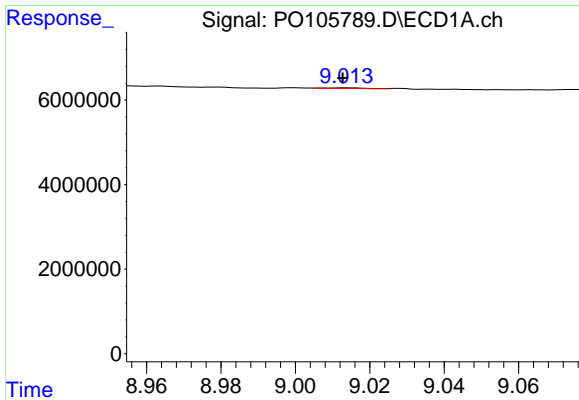
#42 AR-1268-2

R.T.: 8.780 min
 Delta R.T.: -0.003 min
 Response: 24606
 Conc: 0.03 ng/ml



#42 AR-1268-2

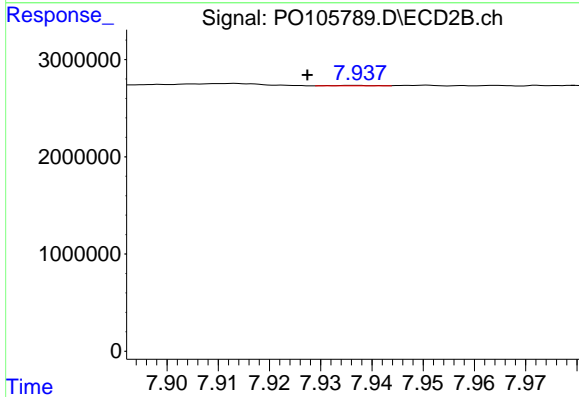
R.T.: 7.699 min
 Delta R.T.: -0.017 min
 Response: 585602
 Conc: 2.08 ng/ml



#43 AR-1268-3

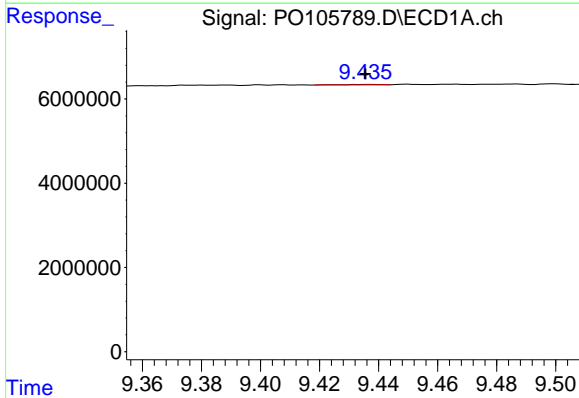
R.T.: 9.013 min
 Delta R.T.: 0.000 min
 Response: 98996
 Conc: 0.16 ng/ml

Instrument :
 ECD_O
 ClientSampleId :
 AR1242CCC500



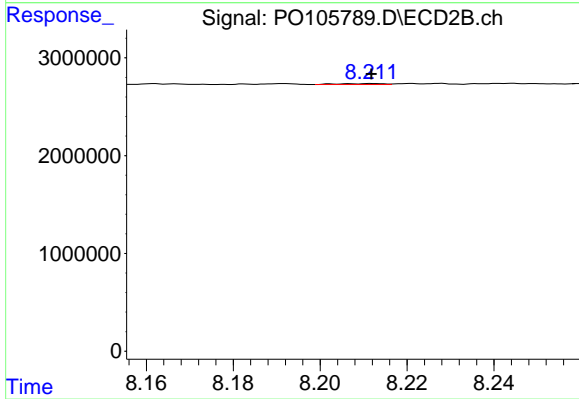
#43 AR-1268-3

R.T.: 7.937 min
 Delta R.T.: 0.009 min
 Response: 25998
 Conc: 0.11 ng/ml



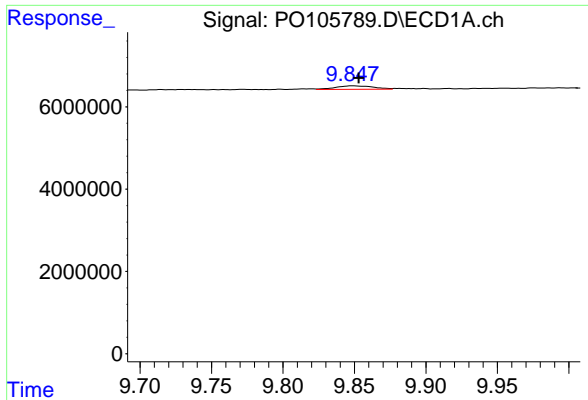
#44 AR-1268-4

R.T.: 9.436 min
 Delta R.T.: 0.000 min
 Response: 116614
 Conc: 0.42 ng/ml



#44 AR-1268-4

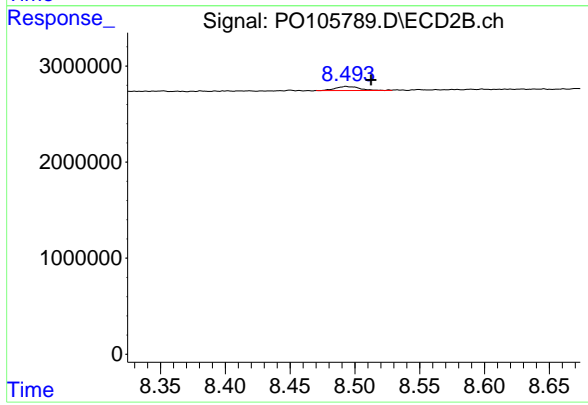
R.T.: 8.212 min
 Delta R.T.: 0.000 min
 Response: 69978
 Conc: 0.71 ng/ml



#45 AR-1268-5

R.T.: 9.848 min
Delta R.T.: -0.005 min
Response: 1549555
Conc: 0.74 ng/ml

Instrument :
ECD_O
ClientSampleId :
AR1242CCC500



#45 AR-1268-5

R.T.: 8.493 min
Delta R.T.: -0.019 min
Response: 543439
Conc: 0.72 ng/ml