

Data Path : Z:\pestpcbsrv\HPCHEM1\ECD O\Data\PO082518\  
 Data File : PO048486.D  
 Signal(s) : Signal #1: ECD1A.CH Signal #2: ECD2B.CH  
 Acq On : 24 Aug 2018 9:11  
 Operator : SM/SJ  
 Sample : PB112337BL  
 Misc :  
 ALS Vial : 4 Sample Multiplier: 1

Instrument :  
 ECD\_O  
 ClientSampleId :  
 PB112337BL

Integration File signal 1: autoint1.e  
 Integration File signal 2: autoint2.e  
 Quant Time: Aug 24 12:36:16 2018  
 Quant Method : Z:\pestpcbsrv\HPCHEM1\ECD\_O\methods\PO082418.M  
 Quant Title : GC EXTRACTABLES  
 QLast Update : Fri Aug 24 08:17:51 2018  
 Response via : Initial Calibration  
 Integrator: ChemStation 6890 Scale Mode: Small noise peaks clipped

Volume Inj. : 2 µl  
 Signal #1 Phase : ZB-MR1 Signal #2 Phase: ZB-MR2  
 Signal #1 Info : 30Mx0.32mmx 0.50µ Signal #2 Info : 30M x 0.32mm x 0.25µm

Compound	RT#1	RT#2	Resp#1	Resp#2	ng/ml	ng/ml
-----						
System Monitoring Compounds						
1) SA Tetrachlo...	4.386	3.629	4380780	5614628	23.126	20.739
2) SA Decachlor...	10.068	8.603	3784435	3644854	21.977	21.763

Target Compounds

-----

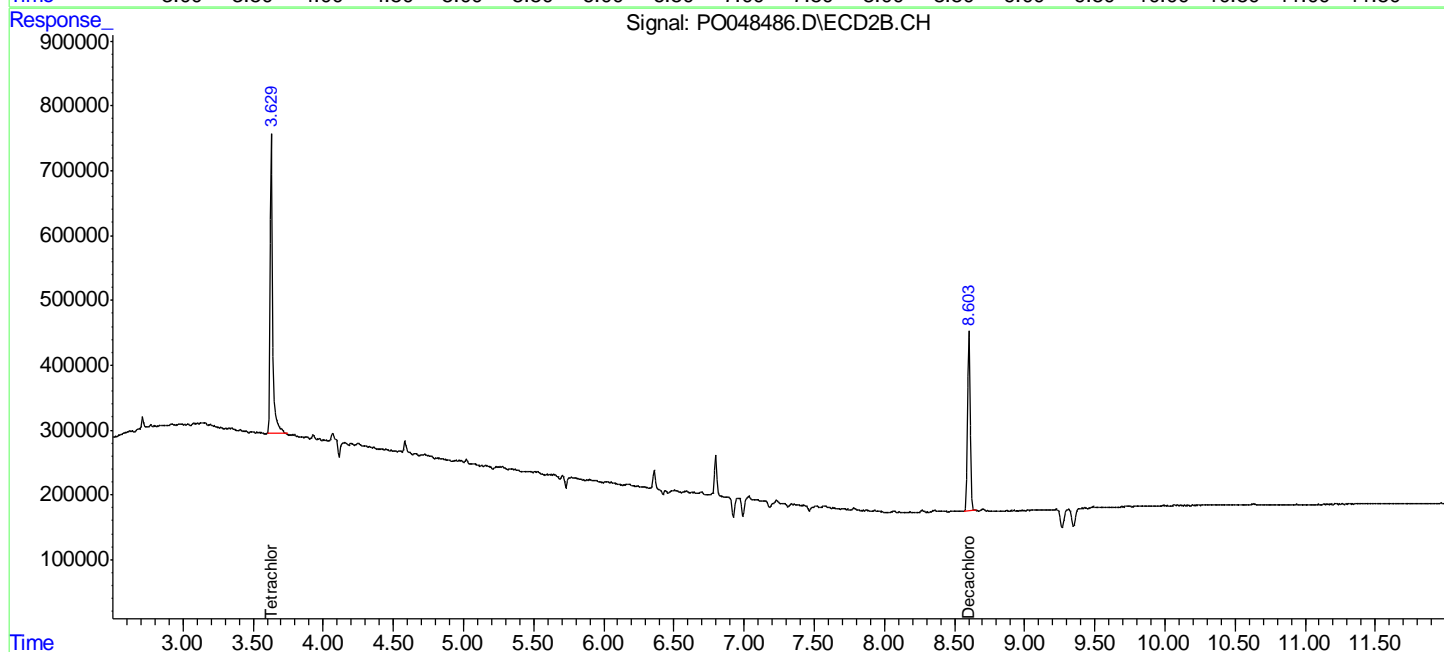
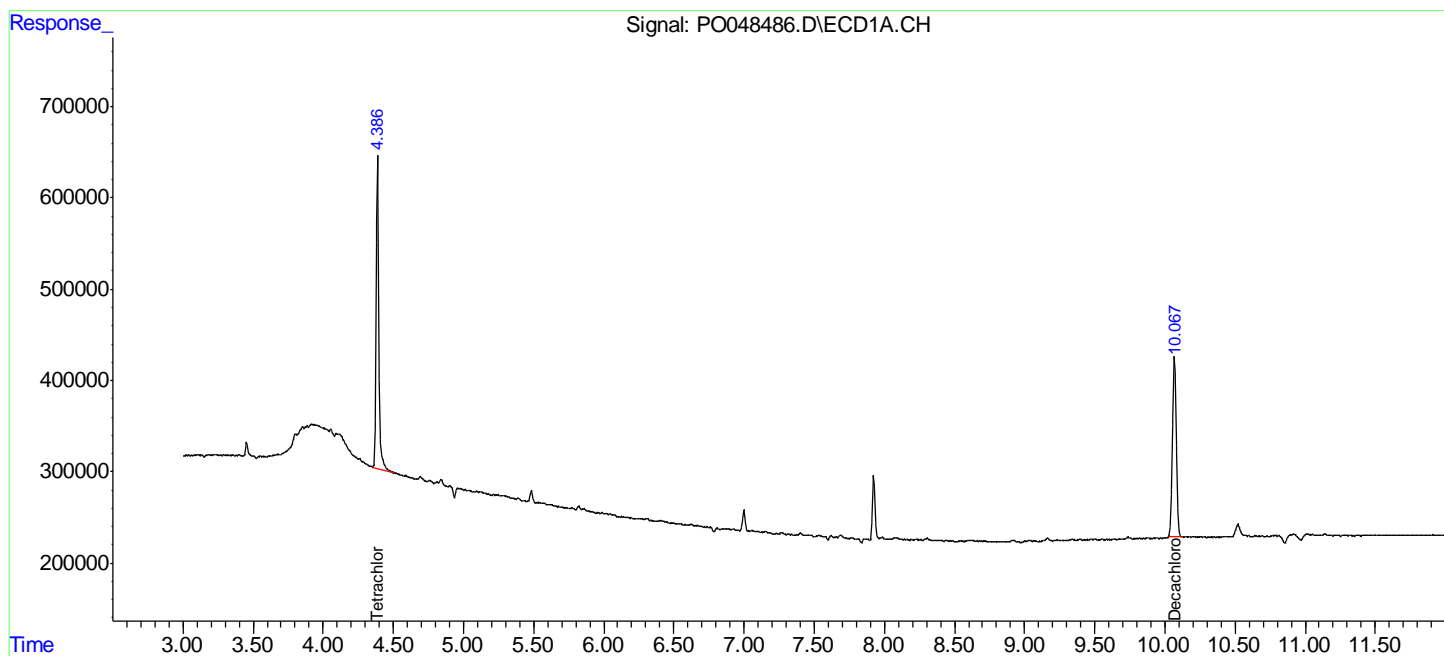
(f)=RT Delta > 1/2 Window (#)=Amounts differ by > 25% (m)=manual int.

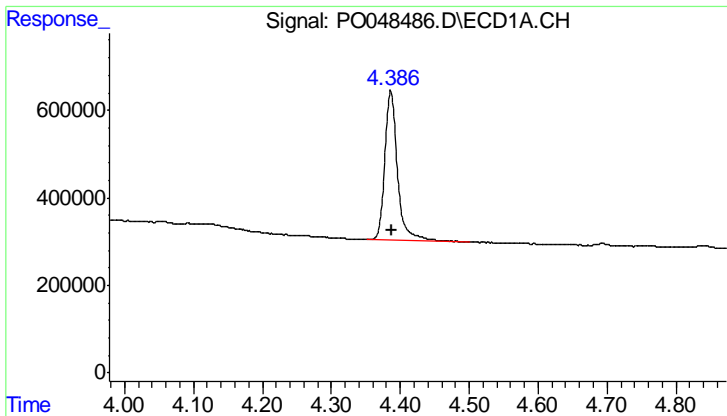
Data Path : Z:\pestpcbsrv\HPCHEM1\ECD O\Data\PO082518\  
 Data File : PO048486.D  
 Signal(s) : Signal #1: ECD1A.CH Signal #2: ECD2B.CH  
 Acq On : 24 Aug 2018 9:11  
 Operator : SM/SJ  
 Sample : PB112337BL  
 Misc :  
 ALS Vial : 4 Sample Multiplier: 1

Instrument :  
 ECD\_O  
 ClientSampleID :  
 PB112337BL

Integration File signal 1: autoint1.e  
 Integration File signal 2: autoint2.e  
 Quant Time: Aug 24 12:36:16 2018  
 Quant Method : Z:\pestpcbsrv\HPCHEM1\ECD\_O\methods\PO082418.M  
 Quant Title : GC EXTRACTABLES  
 QLast Update : Fri Aug 24 08:17:51 2018  
 Response via : Initial Calibration  
 Integrator: ChemStation 6890 Scale Mode: Small noise peaks clipped

Volume Inj. : 2 µl  
 Signal #1 Phase : ZB-MR1 Signal #2 Phase: ZB-MR2  
 Signal #1 Info : 30Mx0.32mmx 0.50µ Signal #2 Info : 30M x 0.32mm x 0.25µm

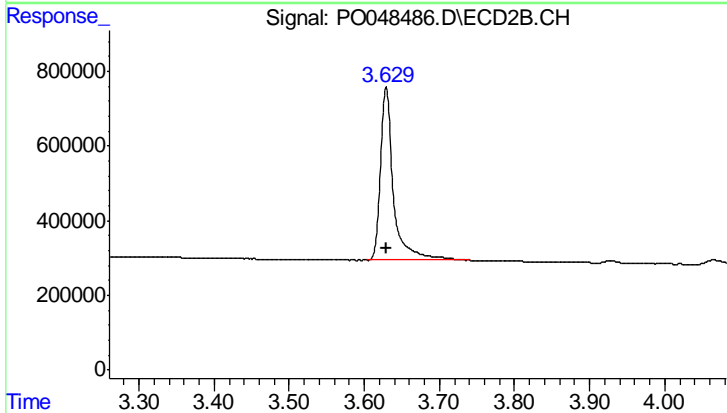




#1 Tetrachloro-m-xylene

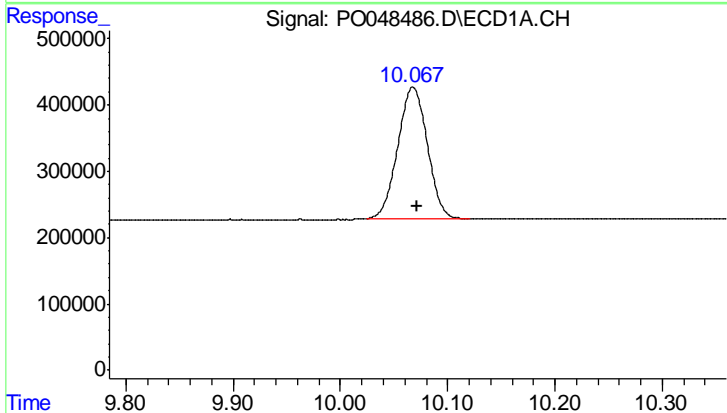
R.T.: 4.386 min  
 Delta R.T.: -0.001 min  
 Response: 4380780  
 Conc: 23.13 ng/ml

Instrument :  
 ECD\_O  
 ClientSampled :  
 PB112337BL



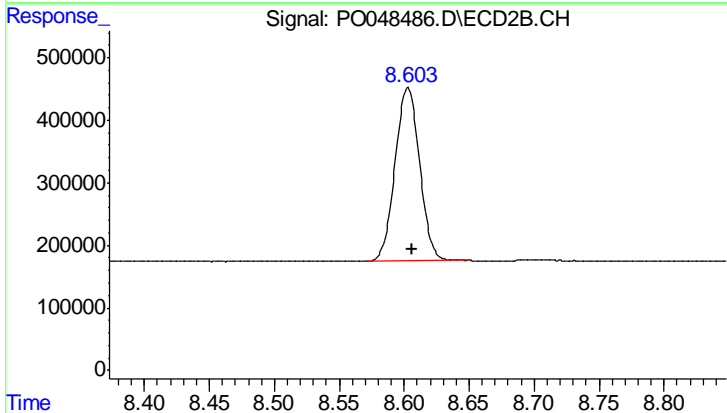
#1 Tetrachloro-m-xylene

R.T.: 3.629 min  
 Delta R.T.: -0.001 min  
 Response: 5614628  
 Conc: 20.74 ng/ml



#2 Decachlorobiphenyl

R.T.: 10.068 min  
 Delta R.T.: -0.004 min  
 Response: 3784435  
 Conc: 21.98 ng/ml



#2 Decachlorobiphenyl

R.T.: 8.603 min  
 Delta R.T.: -0.003 min  
 Response: 3644854  
 Conc: 21.76 ng/ml