

Data Path : Z:\pestpcbsrv\HPCHEM1\ECD_0\Data\P0082620\
 Data File : P0070886.D
 Signal(s) : Signal #1: ECD1A.CH Signal #2: ECD2B.CH
 Acq On : 26 Aug 2020 15:30
 Operator : DD\AJ
 Sample : AR1660CCC500
 Misc :
 ALS Vial : 3 Sample Multiplier: 1

Instrument :
 ECD_0
 ClientSampleId :
 AR1660CCC500

Integration File signal 1: autoint1.e
 Integration File signal 2: autoint2.e
 Quant Time: Aug 26 16:12:33 2020
 Quant Method : Z:\pestpcbsrv\HPCHEM1\ECD_0\methods\P0082020.M
 Quant Title : GC EXTRACTABLES
 QLast Update : Fri Aug 21 04:17:00 2020
 Response via : Initial Calibration
 Integrator: ChemStation 6890 Scale Mode: Small noise peaks clipped

Volume Inj. : 2 µl
 Signal #1 Phase : ZB-MR2 Signal #2 Phase: ZB-MR2
 Signal #1 Info : 30Mx0.32mmx 0.50µ Signal #2 Info : 30M x 0.32mm x 0.25µm

Compound	RT#1	RT#2	Resp#1	Resp#2	ng/ml	ng/ml

System Monitoring Compounds						
1) SA Tetrachlo...	4.369	3.554	3791120	2014045	54.422	50.030
2) SA Decachlor...	9.995	8.740	4606348	2846606	49.202	50.551
Target Compounds						
3) L1 AR-1016-1	5.674	4.779	1569358	865495	570.391	501.818
4) L1 AR-1016-2	5.695	4.798	2262596	1218770	558.669	505.532
5) L1 AR-1016-3	5.758	4.983	1337807	660114	564.149	531.806
6) L1 AR-1016-4	5.865	5.040	1139594	561976	575.385	577.416
7) L1 AR-1016-5	6.173	5.260	1102127	684328	567.416	532.875
31) L7 AR-1260-1	7.331	6.341	2011063	1357154	487.846	512.829
32) L7 AR-1260-2	7.597	6.542	3234587	1791889	520.382	488.300
33) L7 AR-1260-3	7.955	6.690	2561530	1529385	477.989	492.625
34) L7 AR-1260-4	8.182	7.166	2384061	1356928	468.292	486.621
35) L7 AR-1260-5	8.496	7.417	5483050	3584083	460.217	457.827

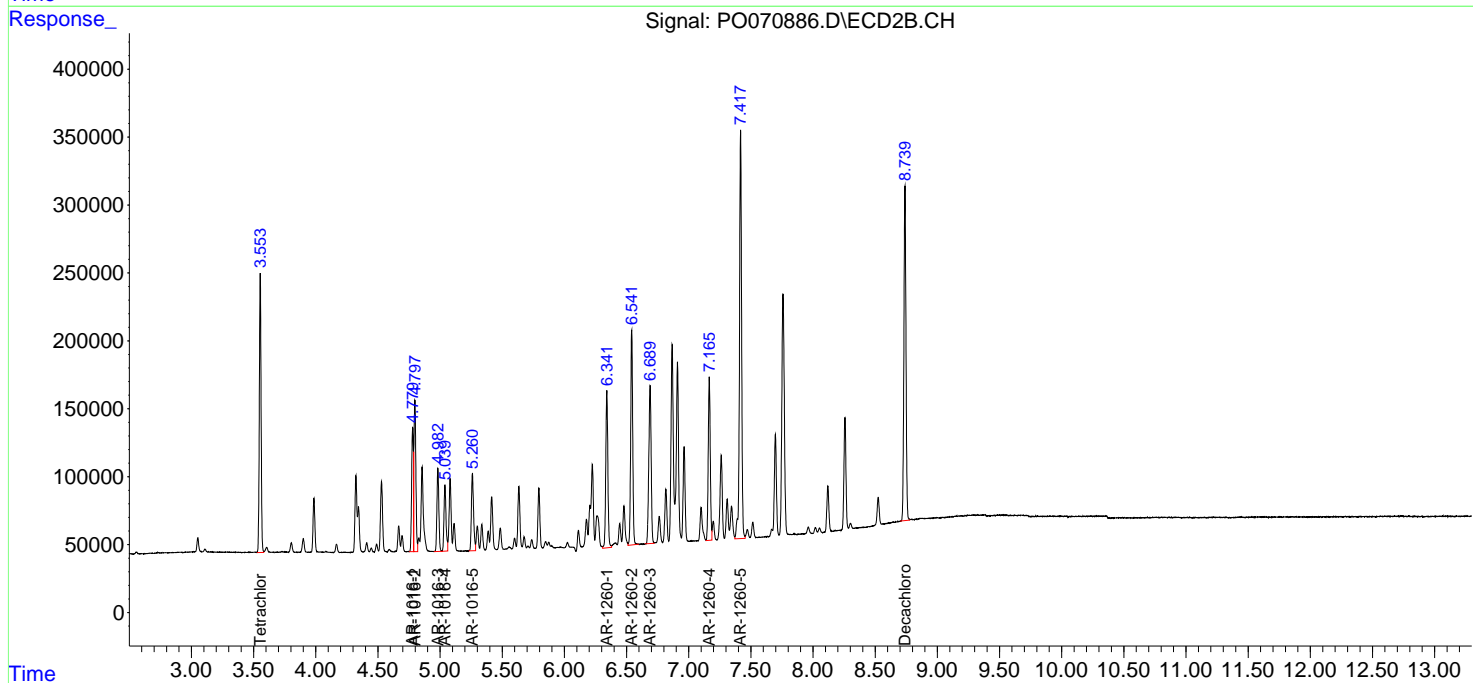
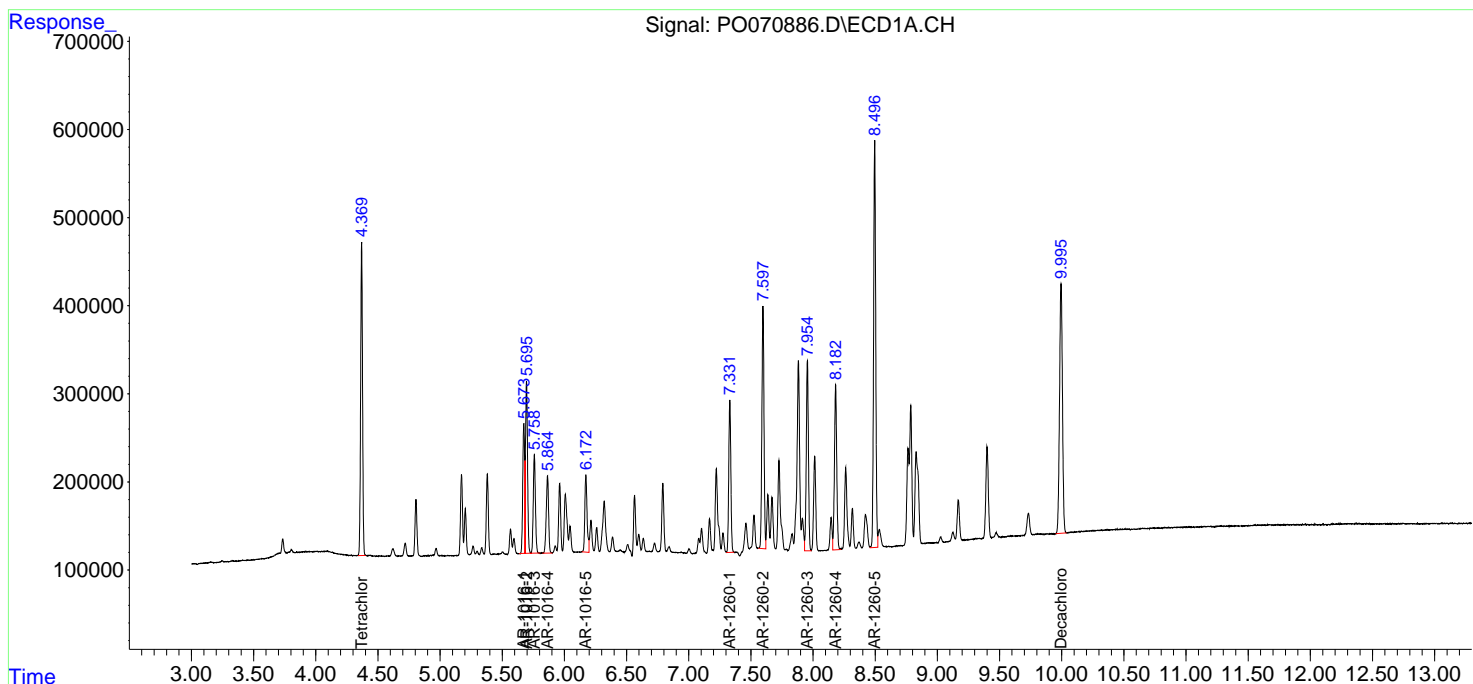
(f)=RT Delta > 1/2 Window (#)=Amounts differ by > 25% (m)=manual int.

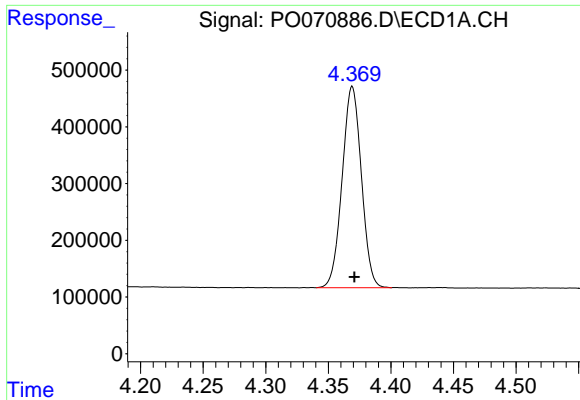
Data Path : Z:\pestpcbsrv\HPCHEM1\ECD_O\Data\P0082620\
 Data File : P0070886.D
 Signal(s) : Signal #1: ECD1A.CH Signal #2: ECD2B.CH
 Acq On : 26 Aug 2020 15:30
 Operator : DD\AJ
 Sample : AR1660CCC500
 Misc :
 ALS Vial : 3 Sample Multiplier: 1

Instrument :
 ECD_O
 ClientSampled :
 AR1660CCC500

Integration File signal 1: autoint1.e
 Integration File signal 2: autoint2.e
 Quant Time: Aug 26 16:12:33 2020
 Quant Method : Z:\pestpcbsrv\HPCHEM1\ECD_O\methods\P0082020.M
 Quant Title : GC EXTRACTABLES
 QLast Update : Fri Aug 21 04:17:00 2020
 Response via : Initial Calibration
 Integrator: ChemStation 6890 Scale Mode: Small noise peaks clipped

Volume Inj. : 2 µl
 Signal #1 Phase : ZB-MR1 Signal #2 Phase: ZB-MR2
 Signal #1 Info : 30Mx0.32mmx 0.50µ Signal #2 Info : 30M x 0.32mm x 0.25µm

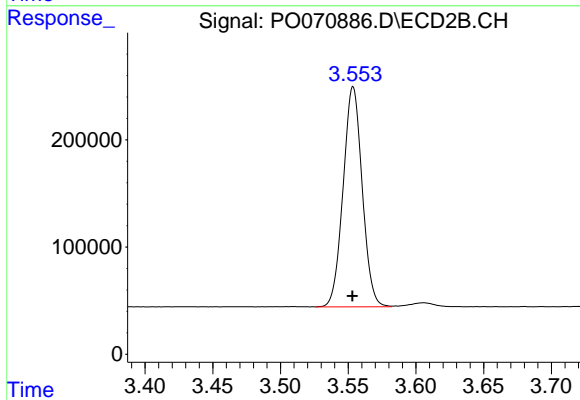




#1 Tetrachloro-m-xylene

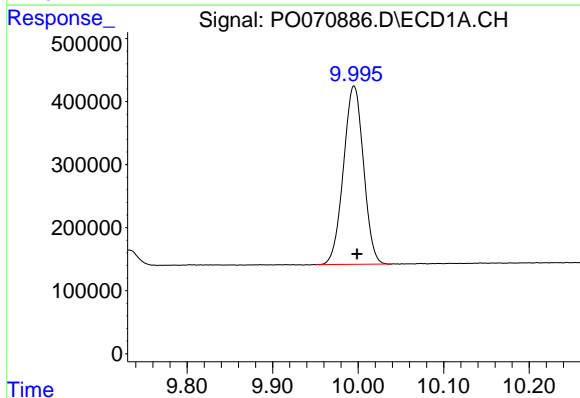
R.T.: 4.369 min
 Delta R.T.: -0.002 min
 Response: 3791120
 Conc: 54.42 ng/ml

Instrument :
 ECD_O
 ClientSampleId :
 AR1660CCC500



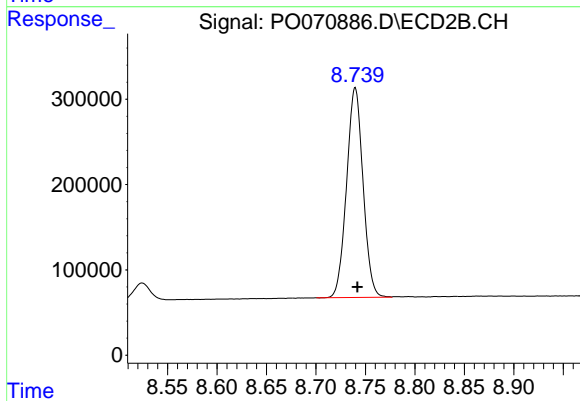
#1 Tetrachloro-m-xylene

R.T.: 3.554 min
 Delta R.T.: 0.000 min
 Response: 2014045
 Conc: 50.03 ng/ml



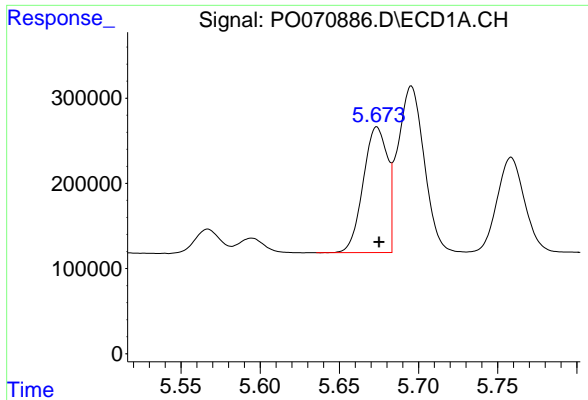
#2 Decachlorobiphenyl

R.T.: 9.995 min
 Delta R.T.: -0.004 min
 Response: 4606348
 Conc: 49.20 ng/ml



#2 Decachlorobiphenyl

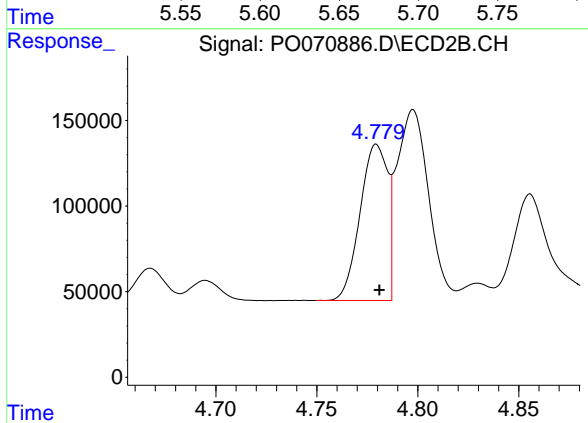
R.T.: 8.740 min
 Delta R.T.: -0.002 min
 Response: 2846606
 Conc: 50.55 ng/ml



#3 AR-1016-1

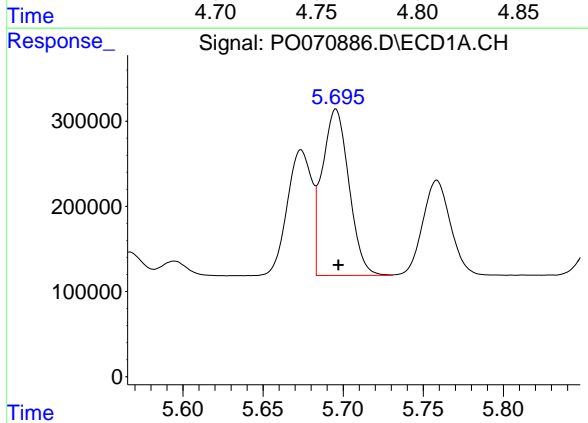
R.T.: 5.674 min
 Delta R.T.: -0.001 min
 Response: 1569358
 Conc: 570.39 ng/ml

Instrument :
 ECD_O
 ClientSampled :
 AR1660CCC500



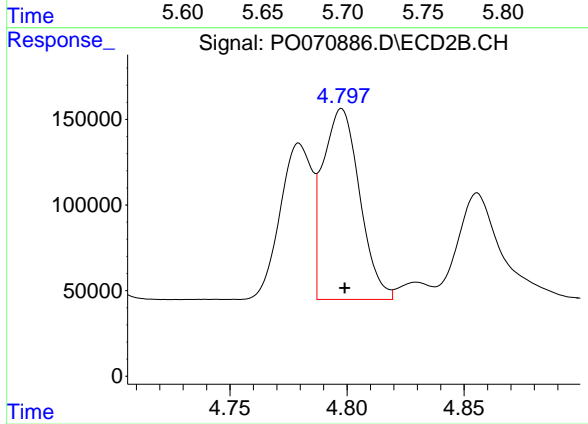
#3 AR-1016-1

R.T.: 4.779 min
 Delta R.T.: -0.002 min
 Response: 865495
 Conc: 501.82 ng/ml



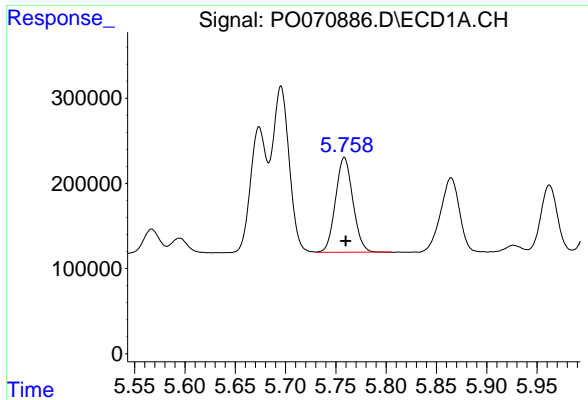
#4 AR-1016-2

R.T.: 5.695 min
 Delta R.T.: -0.002 min
 Response: 2262596
 Conc: 558.67 ng/ml



#4 AR-1016-2

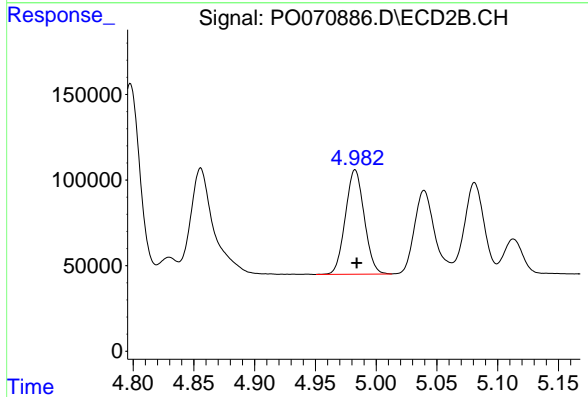
R.T.: 4.798 min
 Delta R.T.: -0.001 min
 Response: 1218770
 Conc: 505.53 ng/ml



#5 AR-1016-3

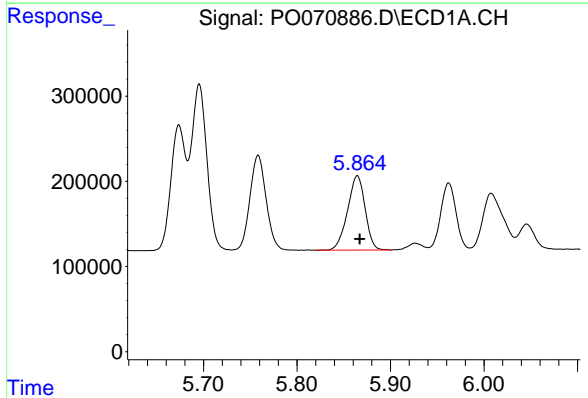
R.T.: 5.758 min
 Delta R.T.: -0.002 min
 Response: 1337807
 Conc: 564.15 ng/ml

Instrument :
 ECD_O
 ClientSampleId :
 AR1660CCC500



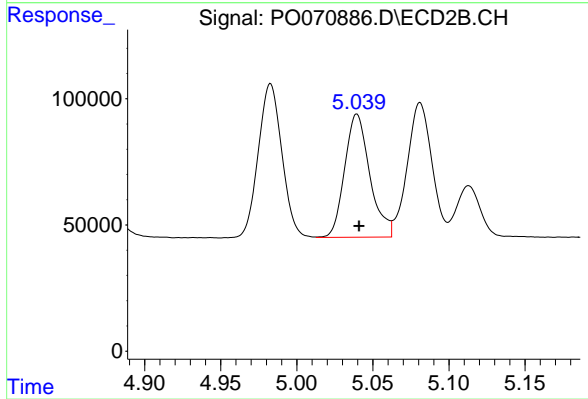
#5 AR-1016-3

R.T.: 4.983 min
 Delta R.T.: -0.001 min
 Response: 660114
 Conc: 531.81 ng/ml



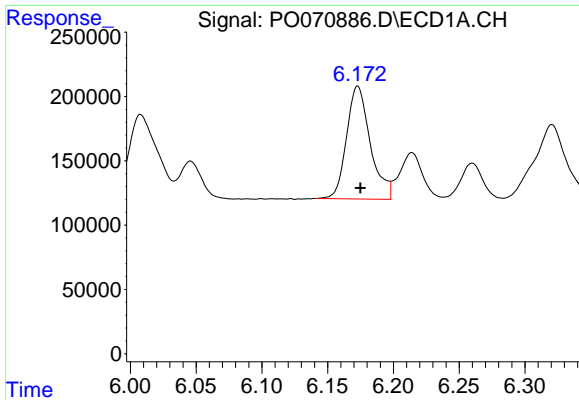
#6 AR-1016-4

R.T.: 5.865 min
 Delta R.T.: -0.002 min
 Response: 1139594
 Conc: 575.39 ng/ml



#6 AR-1016-4

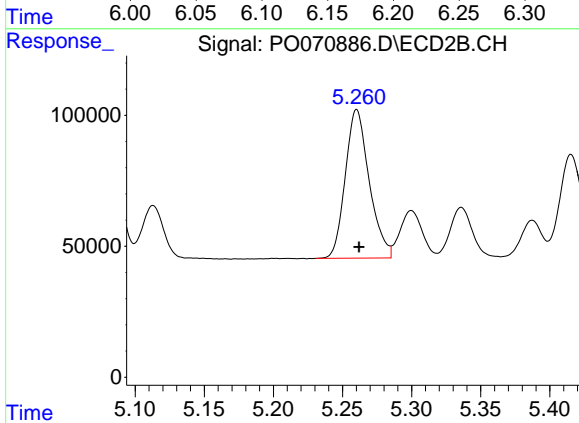
R.T.: 5.040 min
 Delta R.T.: -0.002 min
 Response: 561976
 Conc: 577.42 ng/ml



#7 AR-1016-5

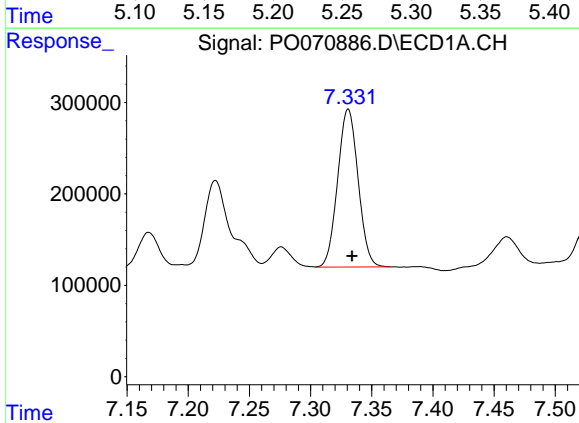
R.T.: 6.173 min
 Delta R.T.: -0.002 min
 Response: 1102127
 Conc: 567.42 ng/ml

Instrument :
 ECD_O
 ClientSampleId :
 AR1660CCC500



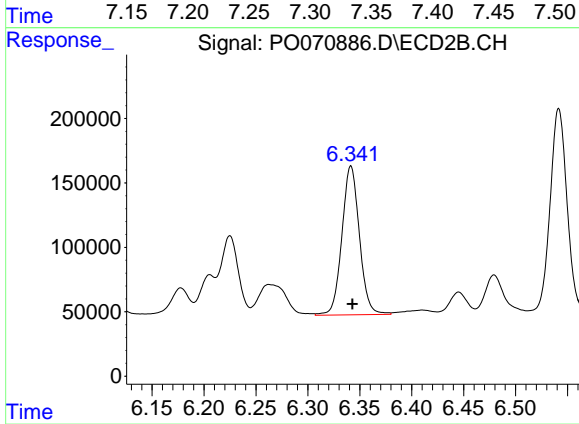
#7 AR-1016-5

R.T.: 5.260 min
 Delta R.T.: -0.002 min
 Response: 684328
 Conc: 532.88 ng/ml



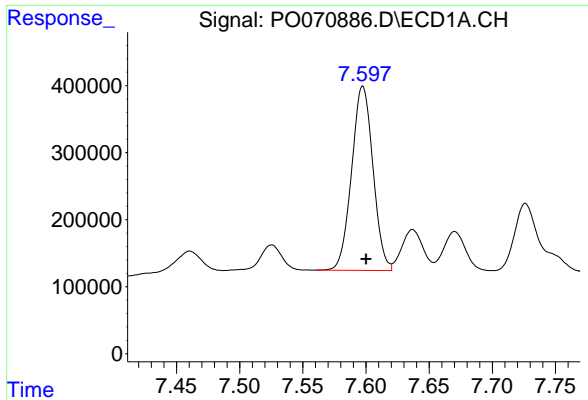
#31 AR-1260-1

R.T.: 7.331 min
 Delta R.T.: -0.003 min
 Response: 2011063
 Conc: 487.85 ng/ml



#31 AR-1260-1

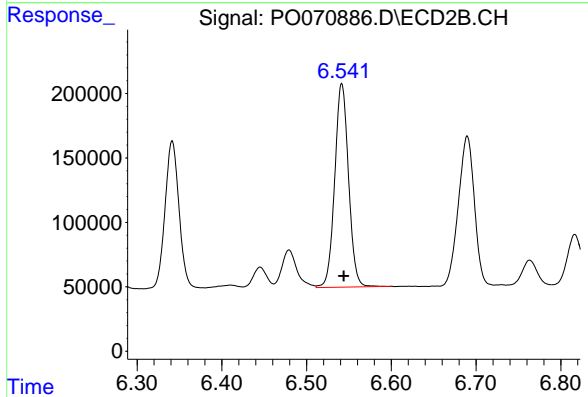
R.T.: 6.341 min
 Delta R.T.: -0.002 min
 Response: 1357154
 Conc: 512.83 ng/ml



#32 AR-1260-2

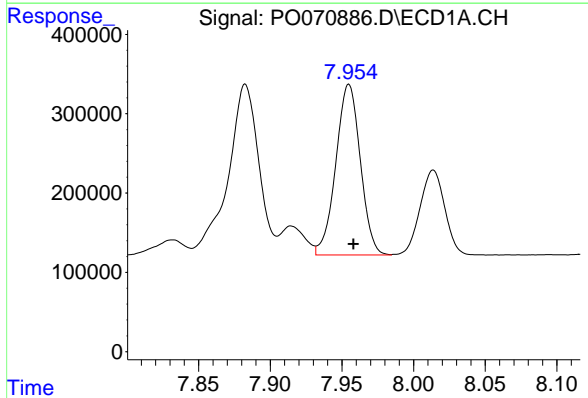
R.T.: 7.597 min
 Delta R.T.: -0.003 min
 Response: 3234587
 Conc: 520.38 ng/ml

Instrument :
 ECD_O
 ClientSampleId :
 AR1660CCC500



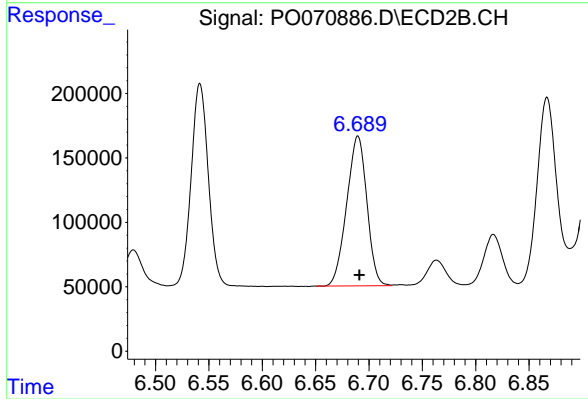
#32 AR-1260-2

R.T.: 6.542 min
 Delta R.T.: -0.002 min
 Response: 1791889
 Conc: 488.30 ng/ml



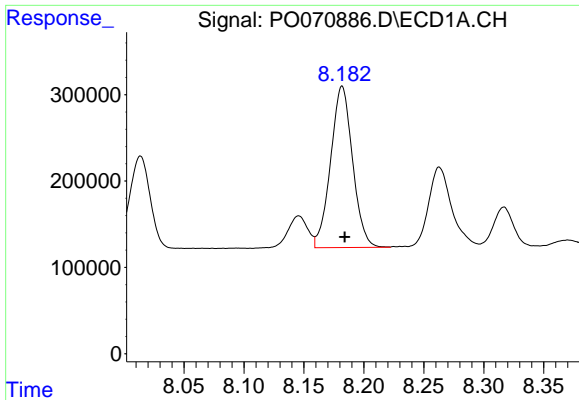
#33 AR-1260-3

R.T.: 7.955 min
 Delta R.T.: -0.003 min
 Response: 2561530
 Conc: 477.99 ng/ml



#33 AR-1260-3

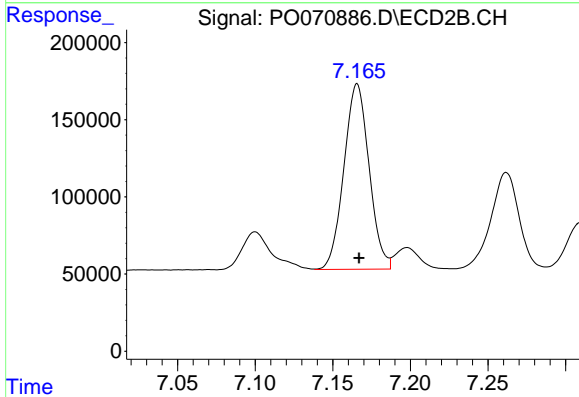
R.T.: 6.690 min
 Delta R.T.: -0.001 min
 Response: 1529385
 Conc: 492.62 ng/ml



#34 AR-1260-4

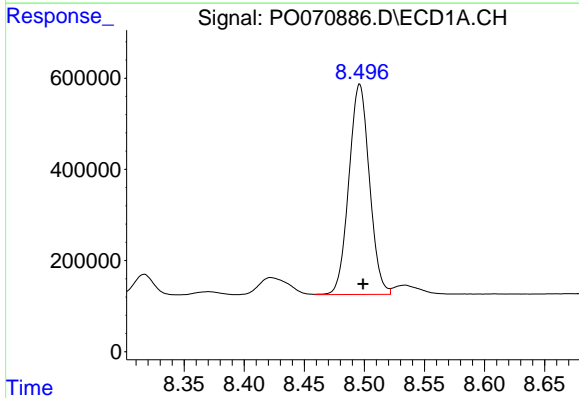
R.T.: 8.182 min
 Delta R.T.: -0.002 min
 Response: 2384061
 Conc: 468.29 ng/ml

Instrument :
 ECD_O
 ClientSampleId :
 AR1660CCC500



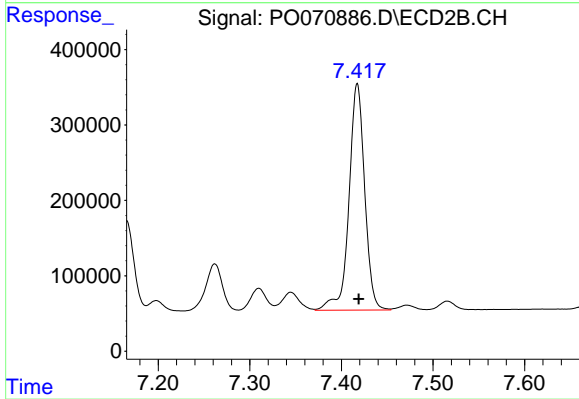
#34 AR-1260-4

R.T.: 7.166 min
 Delta R.T.: -0.001 min
 Response: 1356928
 Conc: 486.62 ng/ml



#35 AR-1260-5

R.T.: 8.496 min
 Delta R.T.: -0.003 min
 Response: 5483050
 Conc: 460.22 ng/ml



#35 AR-1260-5

R.T.: 7.417 min
 Delta R.T.: -0.002 min
 Response: 3584083
 Conc: 457.83 ng/ml