

Data Path : Z:\pestpcbsrv\HPCHEM1\ECD\_0\Data\P0082624\  
 Data File : P0105866.D  
 Signal(s) : Signal #1: ECD1A.ch Signal #2: ECD2B.ch  
 Acq On : 26 Aug 2024 21:29  
 Operator : YP/AJ  
 Sample : AR1248ICV500  
 Misc :  
 ALS Vial : 33 Sample Multiplier: 1

Instrument :  
 ECD\_0  
 ClientSampleId :  
 ICVPO082624AR1248

Integration File signal 1: autoint1.e  
 Integration File signal 2: autoint2.e  
 Quant Time: Aug 27 05:31:41 2024  
 Quant Method : Z:\pestpcbsrv\HPCHEM1\ECD\_0\methods\P0082624.M  
 Quant Title : GC EXTRACTABLES  
 QLast Update : Tue Aug 27 05:14:51 2024  
 Response via : Initial Calibration  
 Integrator: ChemStation

Volume Inj. : 2 µl  
 Signal #1 Phase : ZB-MR1 Signal #2 Phase: ZB-MR2  
 Signal #1 Info : 30Mx0.32mmx 0.50µ Signal #2 Info : 30M x 0.32mm x 0.25µm

Compound	RT#1	RT#2	Resp#1	Resp#2	ng/ml	ng/ml
-----						
System Monitoring Compounds						
1) SA Tetrachlo...	4.453	3.721	484.1E6	151.6E6	53.608	55.042
2) SA Decachlor...	10.193	8.755	299.8E6	121.0E6	54.524	54.099
Target Compounds						
21) L5 AR-1248-1	5.616	4.811	98884011	30106590	525.991	537.531
22) L5 AR-1248-2	5.889	5.049	137.1E6	39815277	530.602	534.849
23) L5 AR-1248-3	6.094	5.091	150.0E6	41793671	525.057	532.108
24) L5 AR-1248-4	6.495	5.264	165.5E6	49548968	524.795	532.142
25) L5 AR-1248-5	6.534	5.658	159.4E6	49137453	525.228	536.226
-----						

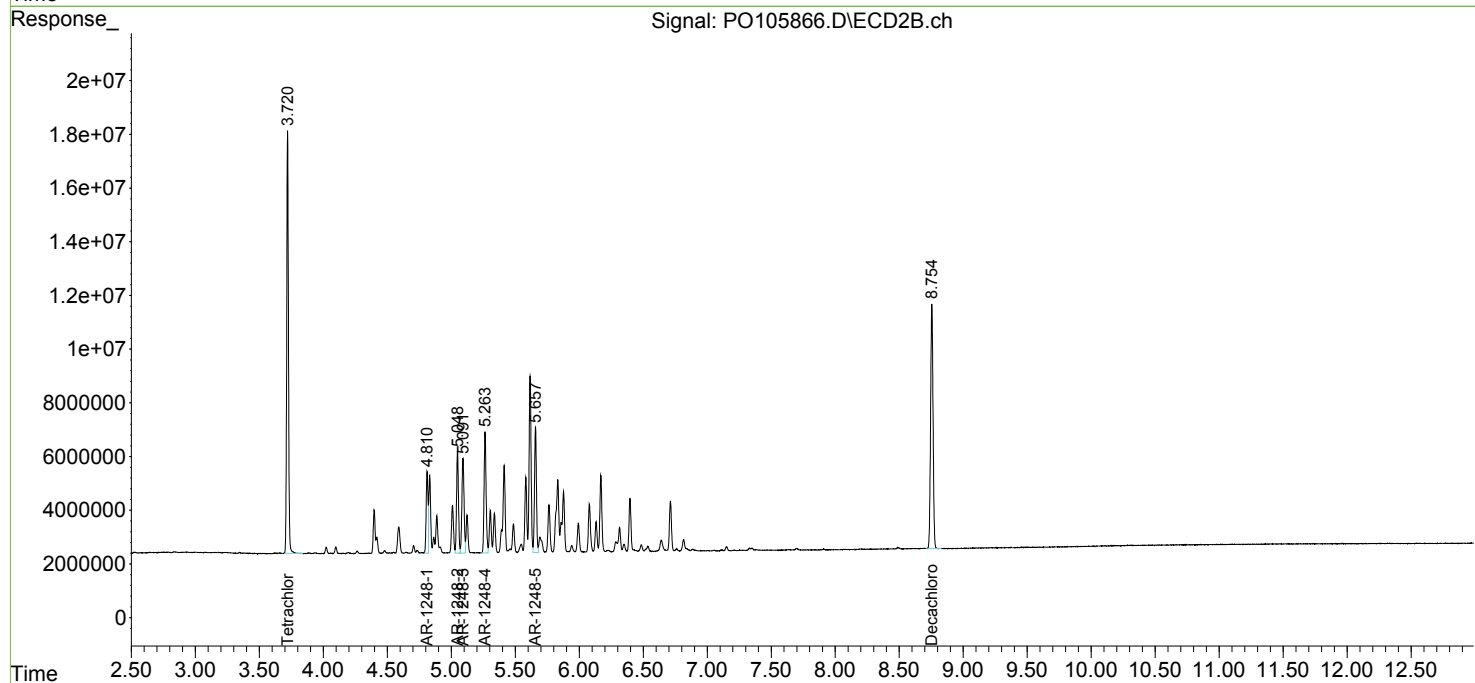
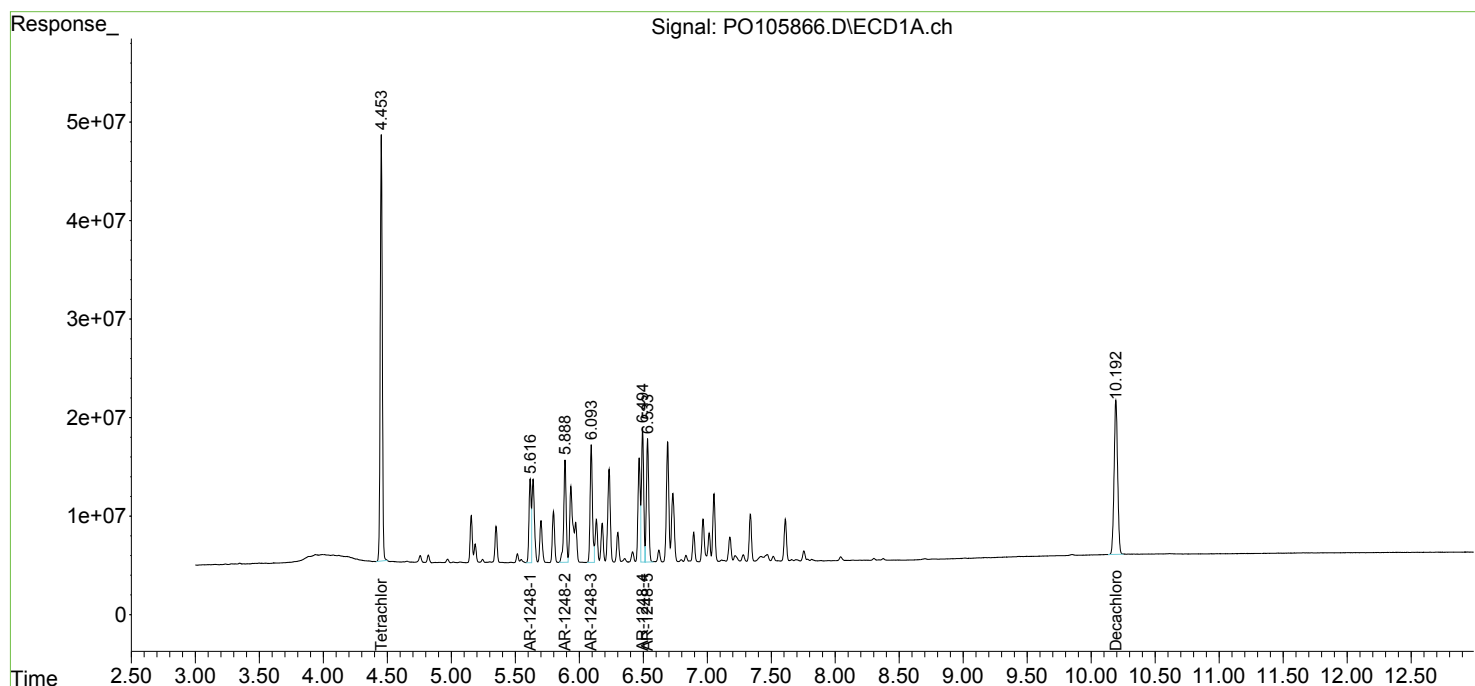
(f)=RT Delta > 1/2 Window (#)=Amounts differ by > 25% (m)=manual int.

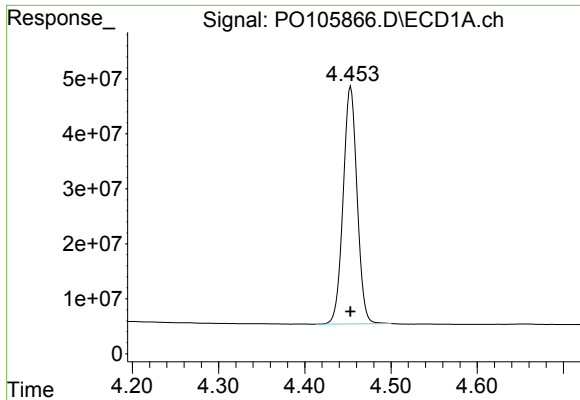
Data Path : Z:\pestpcbsrv\HPCHEM1\ECD\_O\Data\PO082624\  
Data File : PO105866.D  
Signal(s) : Signal #1: ECD1A.ch Signal #2: ECD2B.ch  
Acq On : 26 Aug 2024 21:29  
Operator : YP/AJ  
Sample : AR1248ICV500  
Misc :  
ALS Vial : 33 Sample Multiplier: 1

Instrument :  
ECD\_O  
ClientSampleId :  
ICVPO082624AR1248

Integration File signal 1: autoint1.e  
Integration File signal 2: autoint2.e  
Quant Time: Aug 27 05:31:41 2024  
Quant Method : Z:\pestpcbsrv\HPCHEM1\ECD\_O\methods\PO082624.M  
Quant Title : GC EXTRACTABLES  
QLast Update : Tue Aug 27 05:14:51 2024  
Response via : Initial Calibration  
Integrator: ChemStation

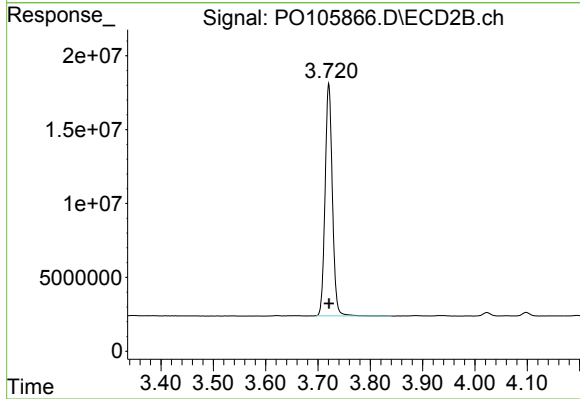
Volume Inj. : 2 µl  
Signal #1 Phase : ZB-MR1 Signal #2 Phase: ZB-MR2  
Signal #1 Info : 30Mx0.32mmx 0.50µ Signal #2 Info : 30M x 0.32mm x 0.25µm



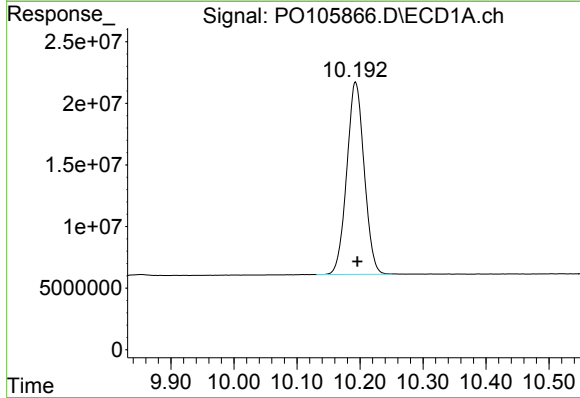


#1 Tetrachloro-m-xylene  
 R.T.: 4.453 min  
 Delta R.T.: 0.000 min  
 Response: 484074263  
 Conc: 53.61 ng/ml

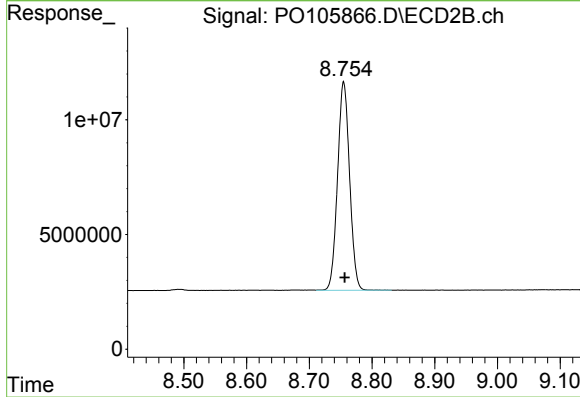
Instrument :  
 ECD\_O  
 ClientSampleId :  
 ICVPO082624AR1248



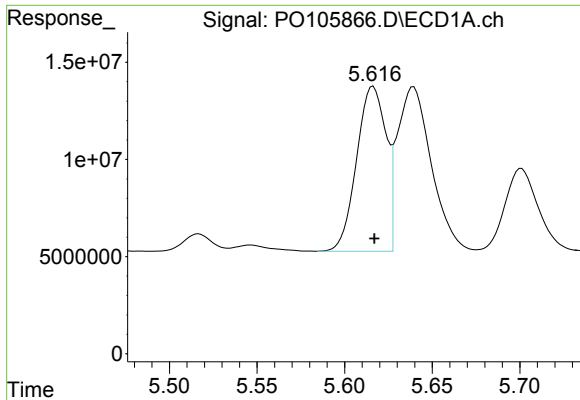
#1 Tetrachloro-m-xylene  
 R.T.: 3.721 min  
 Delta R.T.: 0.000 min  
 Response: 151568920  
 Conc: 55.04 ng/ml



#2 Decachlorobiphenyl  
 R.T.: 10.193 min  
 Delta R.T.: -0.003 min  
 Response: 299781712  
 Conc: 54.52 ng/ml



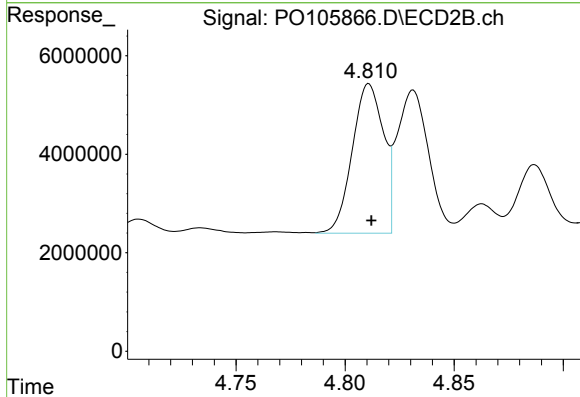
#2 Decachlorobiphenyl  
 R.T.: 8.755 min  
 Delta R.T.: -0.002 min  
 Response: 121037877  
 Conc: 54.10 ng/ml



#21 AR-1248-1

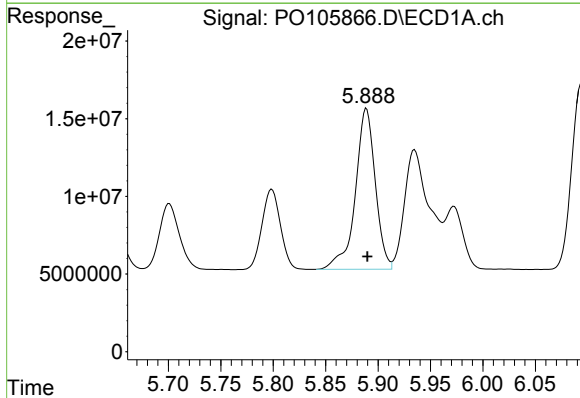
R.T.: 5.616 min  
 Delta R.T.: 0.000 min  
 Response: 98884011  
 Conc: 525.99 ng/ml

Instrument :  
 ECD\_O  
 ClientSampleId :  
 ICVPO082624AR1248



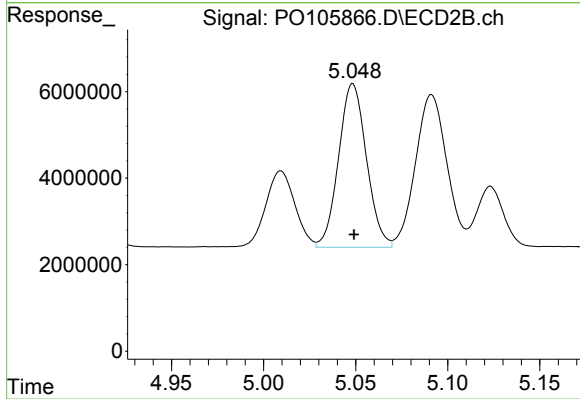
#21 AR-1248-1

R.T.: 4.811 min  
 Delta R.T.: 0.000 min  
 Response: 30106590  
 Conc: 537.53 ng/ml



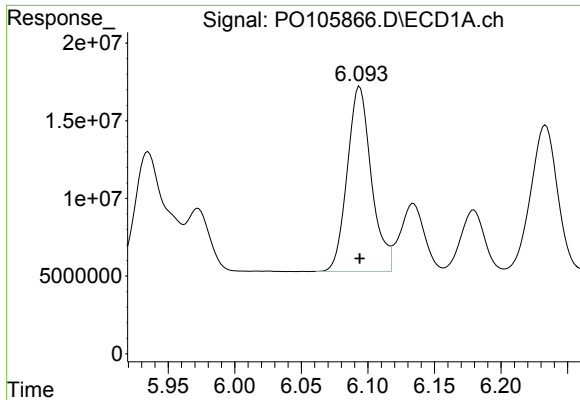
#22 AR-1248-2

R.T.: 5.889 min  
 Delta R.T.: 0.000 min  
 Response: 137101621  
 Conc: 530.60 ng/ml



#22 AR-1248-2

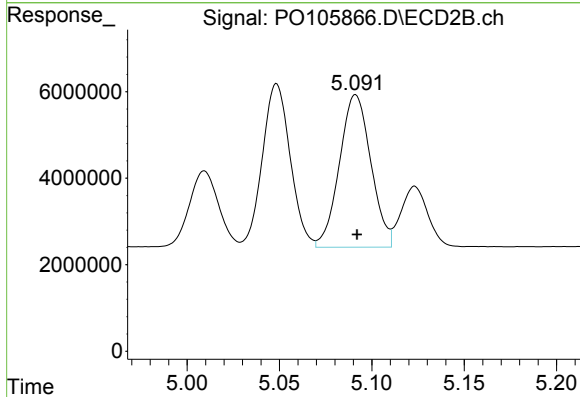
R.T.: 5.049 min  
 Delta R.T.: 0.000 min  
 Response: 39815277  
 Conc: 534.85 ng/ml



#23 AR-1248-3

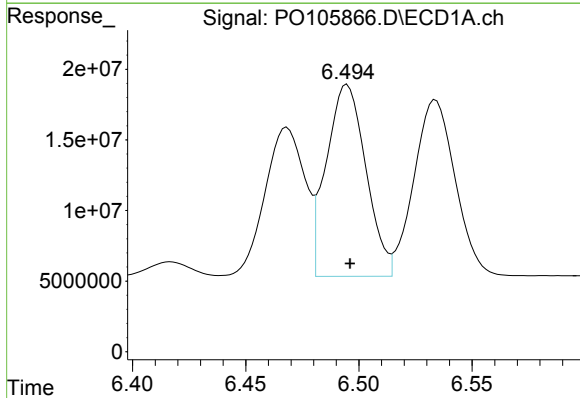
R.T.: 6.094 min  
 Delta R.T.: 0.000 min  
 Response: 149967548  
 Conc: 525.06 ng/ml

Instrument :  
 ECD\_O  
 ClientSampleId :  
 ICVPO082624AR1248



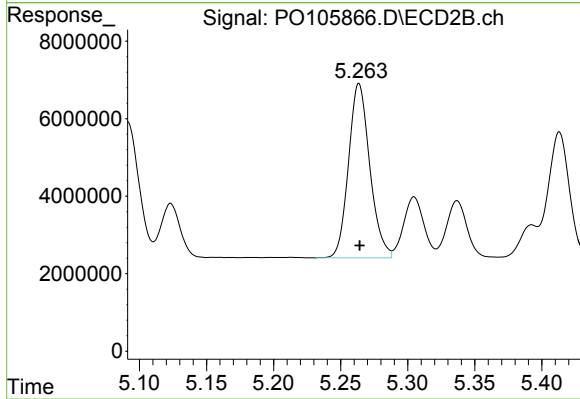
#23 AR-1248-3

R.T.: 5.091 min  
 Delta R.T.: 0.000 min  
 Response: 41793671  
 Conc: 532.11 ng/ml



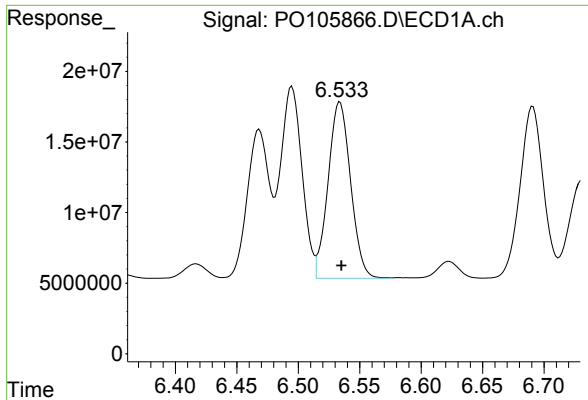
#24 AR-1248-4

R.T.: 6.495 min  
 Delta R.T.: -0.001 min  
 Response: 165463476  
 Conc: 524.79 ng/ml



#24 AR-1248-4

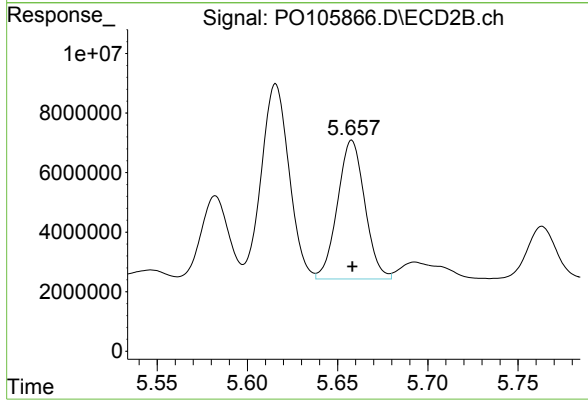
R.T.: 5.264 min  
 Delta R.T.: 0.000 min  
 Response: 49548968  
 Conc: 532.14 ng/ml



#25 AR-1248-5

R.T.: 6.534 min  
Delta R.T.: -0.001 min  
Response: 159427275  
Conc: 525.23 ng/ml

Instrument :  
ECD\_O  
ClientSampleId :  
ICVPO082624AR1248



#25 AR-1248-5

R.T.: 5.658 min  
Delta R.T.: 0.000 min  
Response: 49137453  
Conc: 536.23 ng/ml