

Data Path : Z:\pestpcbsrv\HPCHEM1\ECD\_O\Data\PO082718\  
 Data File : PO048552.D  
 Signal(s) : Signal #1: ECD1A.CH Signal #2: ECD2B.CH  
 Acq On : 27 Aug 2018 21:07  
 Operator : SM/SJ  
 Sample : AR1660CCC500  
 Misc :  
 ALS Vial : 3 Sample Multiplier: 1

Instrument :  
 ECD\_O  
 ClientSampled :  
 AR1660CCC500

Integration File signal 1: autoint1.e  
 Integration File signal 2: autoint2.e  
 Quant Time: Aug 28 05:53:03 2018  
 Quant Method : Z:\pestpcbsrv\HPCHEM1\ECD\_O\methods\PO082418.M  
 Quant Title : GC EXTRACTABLES  
 QLast Update : Fri Aug 24 08:17:51 2018  
 Response via : Initial Calibration  
 Integrator: ChemStation 6890 Scale Mode: Small noise peaks clipped

Volume Inj. : 2 µl  
 Signal #1 Phase : ZB-MR1 Signal #2 Phase: ZB-MR2  
 Signal #1 Info : 30Mx0.32mmx 0.50µ Signal #2 Info : 30M x 0.32mm x 0.25µm

Compound	RT#1	RT#2	Resp#1	Resp#2	ng/ml	ng/ml
----------	------	------	--------	--------	-------	-------

System Monitoring Compounds

1) SA Tetrachlo...	4.382	3.625	11479331	13975572	60.599	51.622
2) SA Decachlor...	10.061	8.599	8297661	7887631	48.186	47.097

Target Compounds

3) L1 AR-1016-1	5.088	4.295	2760928	3195311	578.928	533.241
4) L1 AR-1016-2	5.283	4.704	2715588	4453348	579.125	506.968
5) L1 AR-1016-3	5.549	4.723	3973888	6419774	584.014	501.515
6) L1 AR-1016-4	5.634	4.778	3466605	4191767	570.222	511.113
7) L1 AR-1016-5	6.025	5.152	2633931	3433642	527.422	464.541
8) L2 AR-1221-1	4.586	3.836	337738	390651	160.642	148.443
9) L2 AR-1221-2	4.679	3.923	504394	579419	332.679	301.181
10) L2 AR-1221-3	4.755	3.999	2039536	2212573	411.114	354.839
11) L3 AR-1232-1	5.572	4.486	5661931	3241873	1260.081	1110.805
12) L3 AR-1232-2	5.733	4.723	2783498	6419774	1225.203	1072.099
13) L3 AR-1232-3	5.821	4.980	2376885	3052580	1413.567	1161.463
14) L3 AR-1232-4	6.401	5.300	2651274	2953270	1636.871	1064.544 #
15) L3 AR-1232-5	6.466	5.542	867599	836903	368.732	271.882 #
16) L4 AR-1242-1	5.119	4.314	1640565	2017037	684.822	576.786
17) L4 AR-1242-2	5.866	4.899	2468747	3151501	681.128	576.147
18) L4 AR-1242-3	6.066	4.939	1088125	2499468	630.591	595.603
19) L4 AR-1242-4	6.110	5.715	804792	204882	623.799	46.481 #
20) L4 AR-1242-5	6.166	5.740	2878743	314764	644.207	85.623 #
21) L5 AR-1248-1	5.821	4.939	2376885	2499468	402.642	329.827
22) L5 AR-1248-2	6.401	5.502	2651274	3398168	456.156	258.111 #
23) L5 AR-1248-3	6.427	5.542	1067951	836903	138.386	91.733 #
24) L5 AR-1248-4	6.466	5.715	867599	204882	118.441	25.958 #
25) L5 AR-1248-5	6.665	6.064	147335	4536109	30.453	756.763 #
26) L6 AR-1254-1	6.617	5.647	2205840	2409788	162.495	167.492
27) L6 AR-1254-2	6.899	5.960	377078	490461	45.688	42.347
28) L6 AR-1254-3	6.985	6.277	1229658	429293	85.702	29.308 #
29) L6 AR-1254-4	7.268	6.598	903836	713047	82.240	72.456
30) L6 AR-1254-5	7.531	6.692	2661839	7916195	326.619	406.227
31) L7 AR-1260-1	7.147	6.179	5110266	6209587	513.012	448.390
32) L7 AR-1260-2	7.402	6.365	6028063	7848435	503.218	447.371
33) L7 AR-1260-3	7.685	6.519	6685937	6710849	487.154	437.667
34) L7 AR-1260-4	7.985	6.988	4649465	5216696	469.612	448.177
35) L7 AR-1260-5	8.301	7.228	8971321	12493941	469.946	461.400
36) L8 AR-1262-1	7.041	6.064	3470892	4536109	444.419	426.744
37) L8 AR-1262-2	7.818	6.782	2265785	3194048	351.888	334.132
38) L8 AR-1262-3	8.065	7.084	2320942	2927563	336.144	310.069

Data Path : Z:\pestpcbsrv\HPCHEM1\ECD\_O\Data\PO082718\  
 Data File : PO048552.D  
 Signal(s) : Signal #1: ECD1A.CH Signal #2: ECD2B.CH  
 Acq On : 27 Aug 2018 21:07  
 Operator : SM/SJ  
 Sample : AR1660CCC500  
 Misc :  
 ALS Vial : 3 Sample Multiplier: 1

Instrument :  
 ECD\_O  
 ClientSampleId :  
 AR1660CCC500

Integration File signal 1: autoint1.e  
 Integration File signal 2: autoint2.e  
 Quant Time: Aug 28 05:53:03 2018  
 Quant Method : Z:\pestpcbsrv\HPCHEM1\ECD\_O\methods\PO082418.M  
 Quant Title : GC EXTRACTABLES  
 QLast Update : Fri Aug 24 08:17:51 2018  
 Response via : Initial Calibration  
 Integrator: ChemStation 6890 Scale Mode: Small noise peaks clipped

Volume Inj. : 2 µl  
 Signal #1 Phase : ZB-MR1 Signal #2 Phase: ZB-MR2  
 Signal #1 Info : 30Mx0.32mmx 0.50µ Signal #2 Info : 30M x 0.32mm x 0.25µm

	Compound	RT#1	RT#2	Resp#1	Resp#2	ng/ml	ng/ml
39)	L8 AR-1262-4	8.675	7.510	3530253	2721301	258.455	202.222
40)	L8 AR-1262-5	9.334	8.066	2489802	2759442	269.275	267.917
41)	L9 AR-1268-1	7.760	6.729	4352450	6373797	820.278	824.004
42)	L9 AR-1268-2	7.985	7.573	4649465	8179824	680.883	270.998 #
43)	L9 AR-1268-3	8.620	7.780	5620528	169872	217.859	6.840 #
44)	L9 AR-1268-4	8.915	7.869	138407	108576	6.722	16.596 #
45)	L9 AR-1268-5	9.735	8.350	676244	703899	11.142	11.306

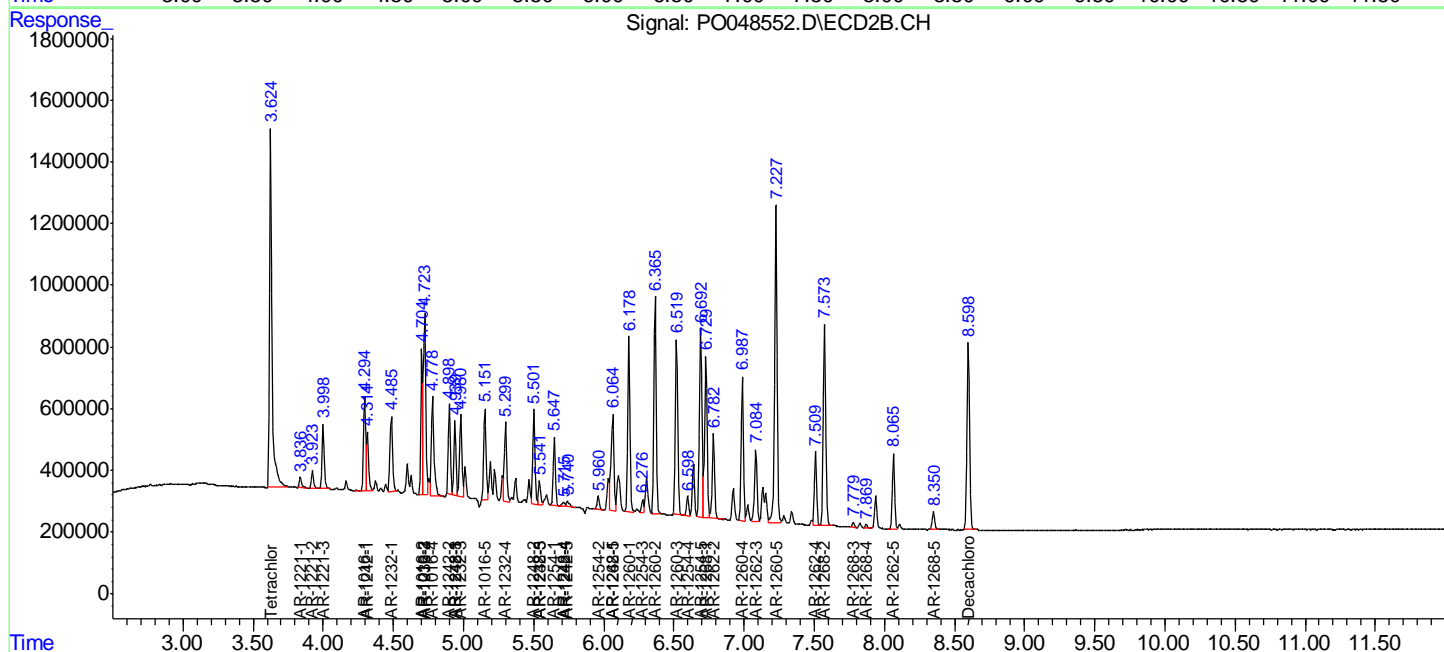
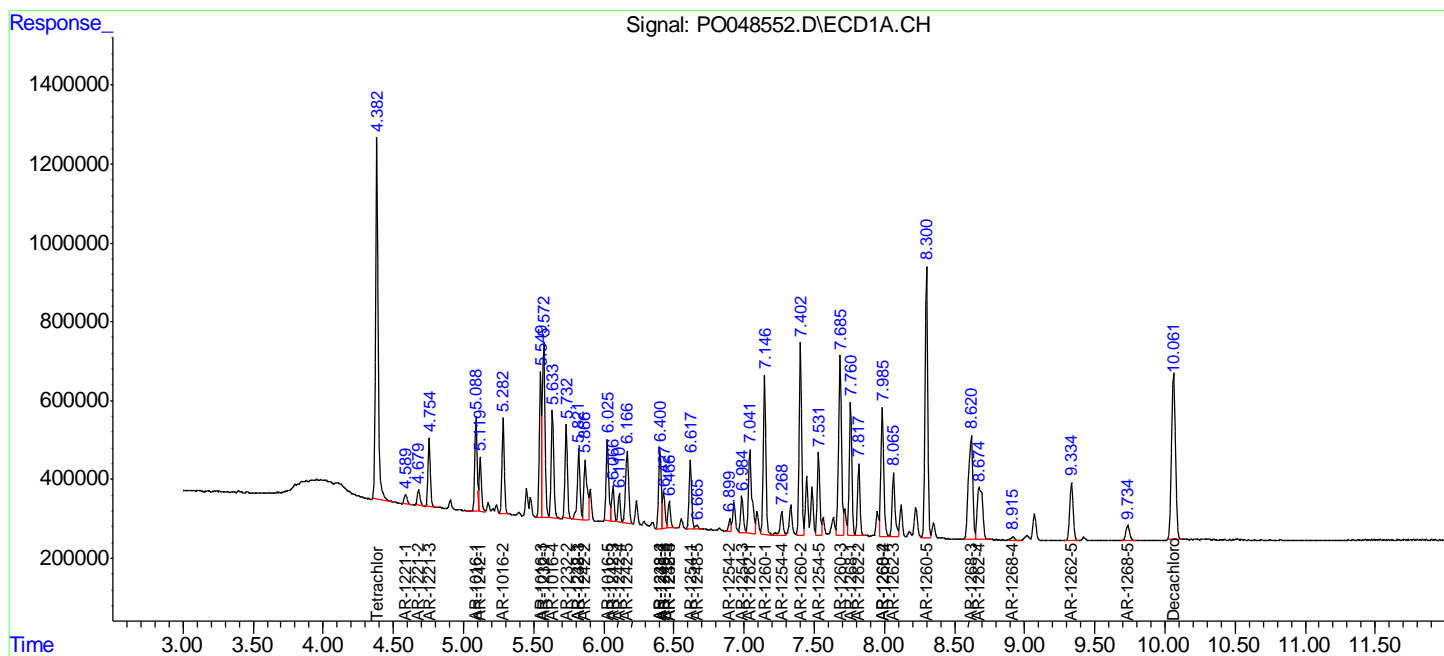
(f)=RT Delta > 1/2 Window (#)=Amounts differ by > 25% (m)=manual int.

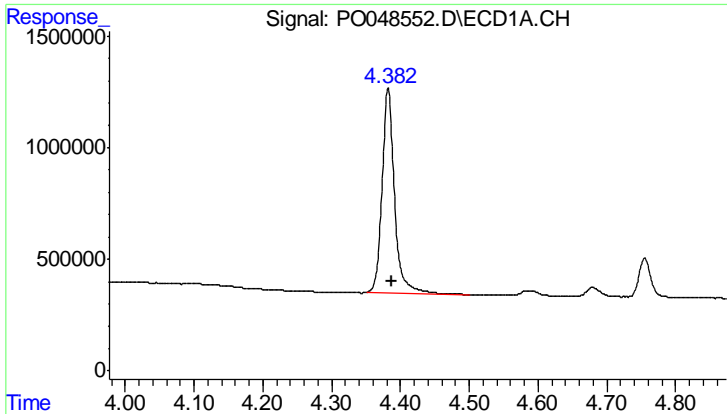
Data Path : Z:\pestpcbsrv\HPCHEM1\ECD\_O\Data\PO082718\  
 Data File : PO048552.D  
 Signal(s) : Signal #1: ECD1A.CH Signal #2: ECD2B.CH  
 Acq On : 27 Aug 2018 21:07  
 Operator : SM/SJ  
 Sample : AR1660CCC500  
 Misc :  
 ALS Vial : 3 Sample Multiplier: 1

Instrument :  
 ECD\_O  
 Client Sampled :  
 AR1660CCC500

Integration File signal 1: autoint1.e  
 Integration File signal 2: autoint2.e  
 Quant Time: Aug 28 05:53:03 2018  
 Quant Method : Z:\pestpcbsrv\HPCHEM1\ECD\_O\methods\PO082418.M  
 Quant Title : GC EXTRACTABLES  
 QLast Update : Fri Aug 24 08:17:51 2018  
 Response via : Initial Calibration  
 Integrator: ChemStation 6890 Scale Mode: Small noise peaks clipped

Volume Inj. : 2 µl  
 Signal #1 Phase : ZB-MR1 Signal #2 Phase: ZB-MR2  
 Signal #1 Info : 30Mx0.32mmx 0.50µ Signal #2 Info : 30M x 0.32mm x 0.25µm

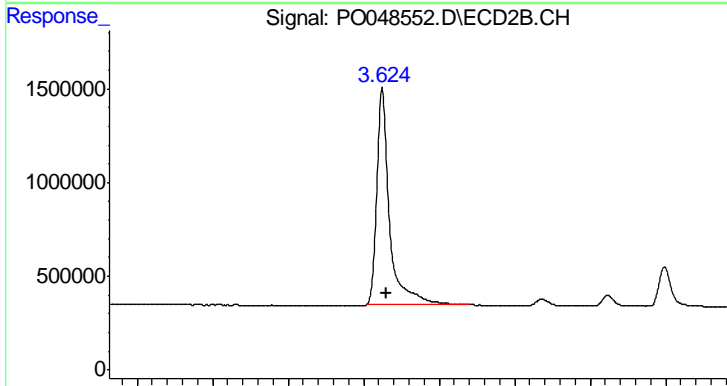




#1 Tetrachloro-m-xylene

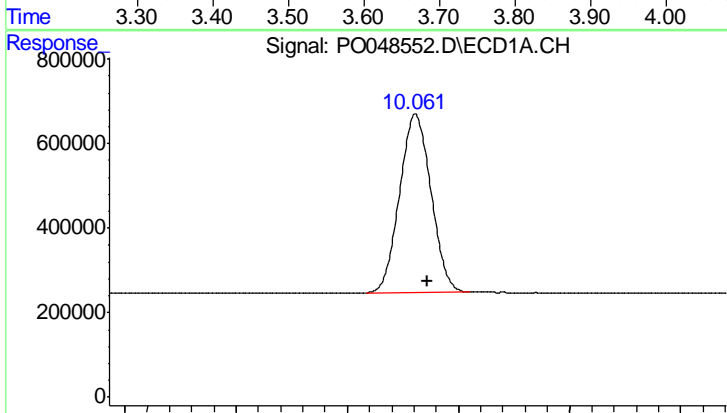
R.T.: 4.382 min  
 Delta R.T.: -0.006 min  
 Response: 11479331  
 Conc: 60.60 ng/ml

Instrument :  
 ECD\_O  
 ClientSampleId :  
 AR1660CCC500



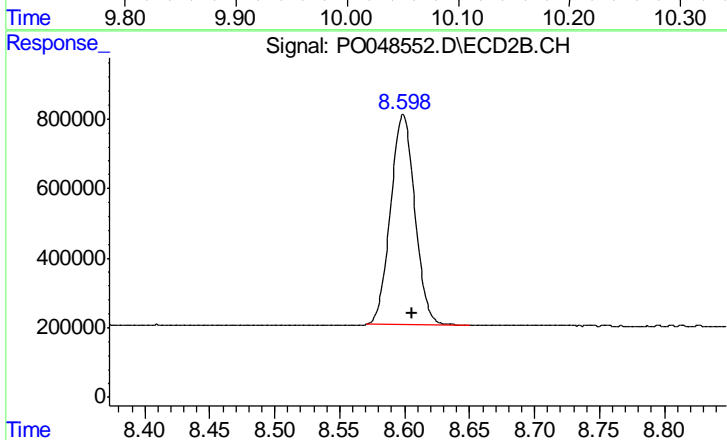
#1 Tetrachloro-m-xylene

R.T.: 3.625 min  
 Delta R.T.: -0.006 min  
 Response: 13975572  
 Conc: 51.62 ng/ml



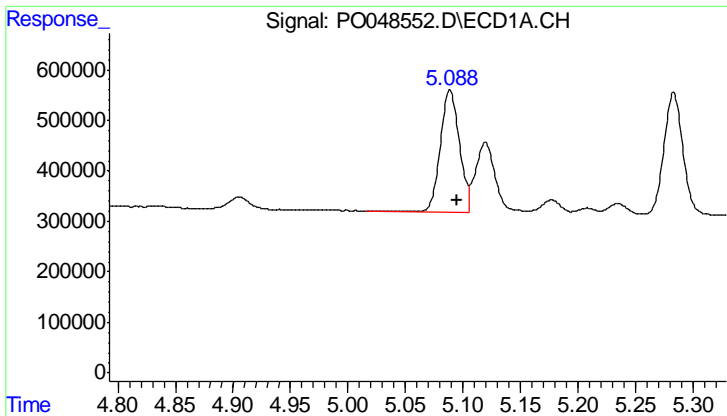
#2 Decachlorobiphenyl

R.T.: 10.061 min  
 Delta R.T.: -0.011 min  
 Response: 8297661  
 Conc: 48.19 ng/ml



#2 Decachlorobiphenyl

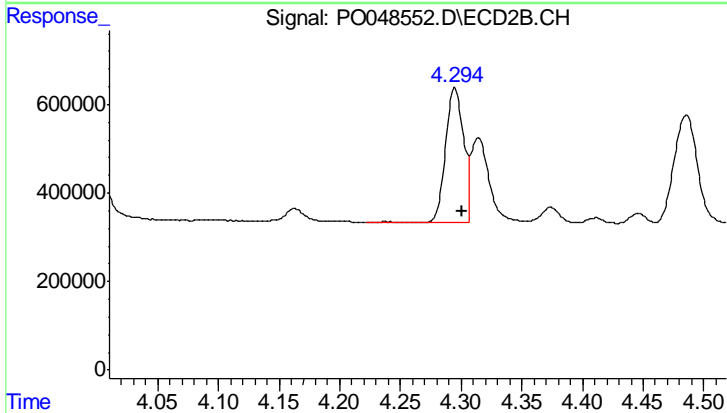
R.T.: 8.599 min  
 Delta R.T.: -0.007 min  
 Response: 7887631  
 Conc: 47.10 ng/ml



#3 AR-1016-1

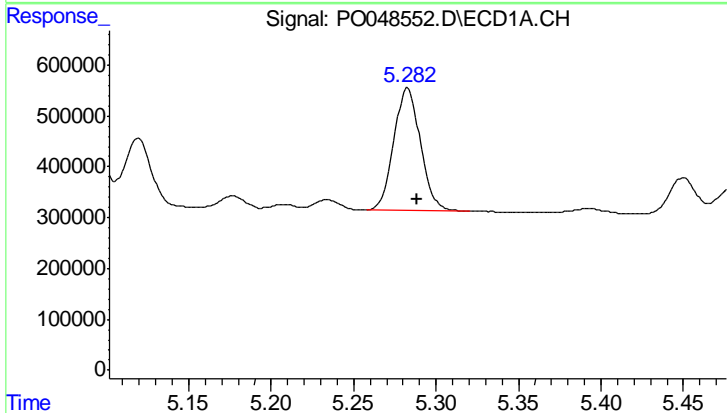
R.T.: 5.088 min  
 Delta R.T.: -0.006 min  
 Response: 2760928  
 Conc: 578.93 ng/ml

Instrument :  
 ECD\_O  
 ClientSampleId :  
 AR1660CCC500



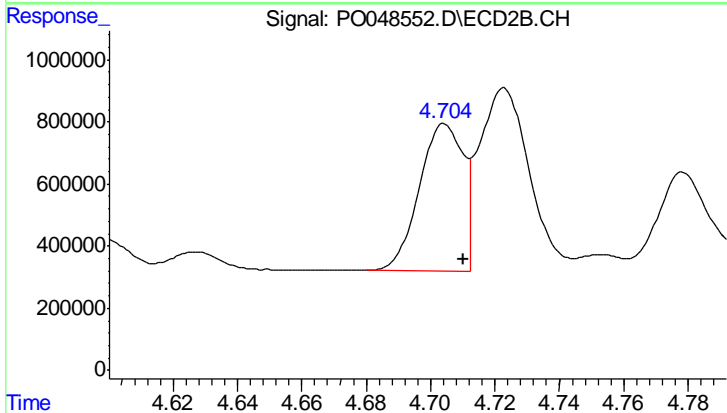
#3 AR-1016-1

R.T.: 4.295 min  
 Delta R.T.: -0.006 min  
 Response: 3195311  
 Conc: 533.24 ng/ml



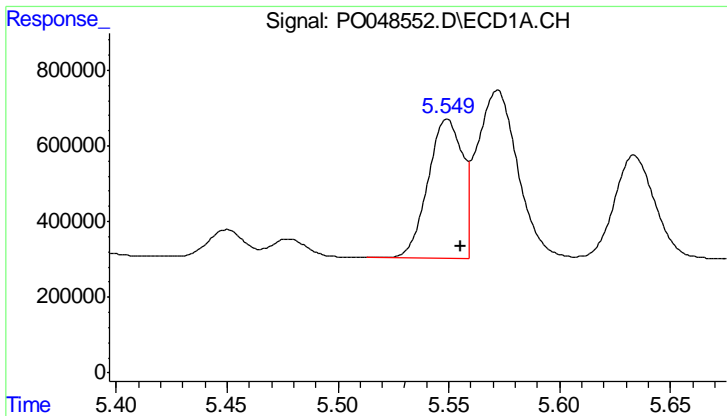
#4 AR-1016-2

R.T.: 5.283 min  
 Delta R.T.: -0.006 min  
 Response: 2715588  
 Conc: 579.12 ng/ml



#4 AR-1016-2

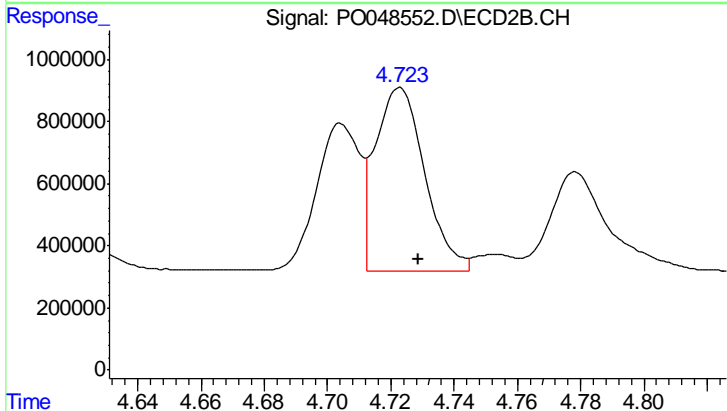
R.T.: 4.704 min  
 Delta R.T.: -0.006 min  
 Response: 4453348  
 Conc: 506.97 ng/ml



#5 AR-1016-3

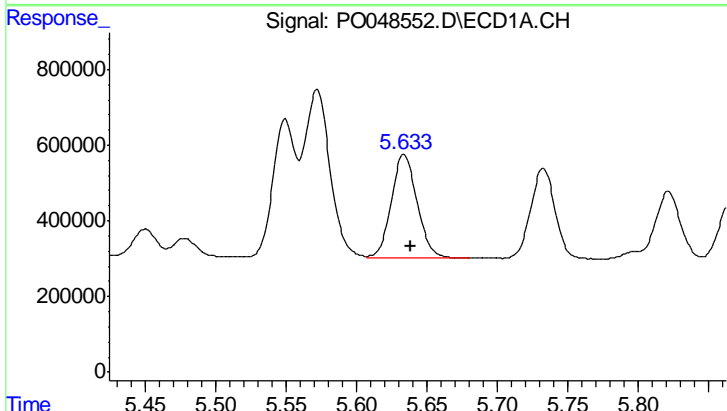
R.T.: 5.549 min  
 Delta R.T.: -0.006 min  
 Response: 3973888  
 Conc: 584.01 ng/ml

Instrument :  
 ECD\_O  
 ClientSampled :  
 AR1660CCC500



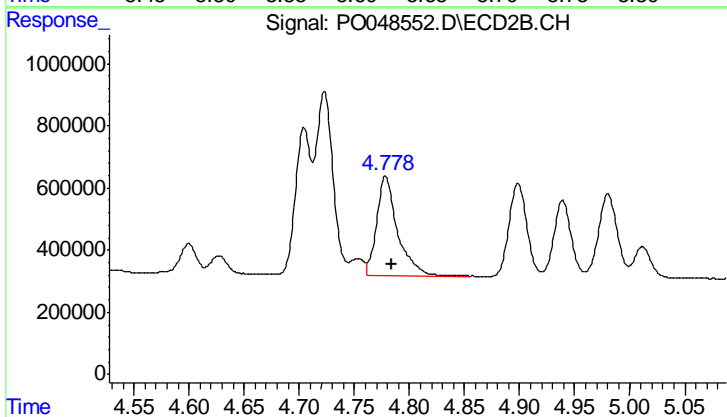
#5 AR-1016-3

R.T.: 4.723 min  
 Delta R.T.: -0.006 min  
 Response: 6419774  
 Conc: 501.52 ng/ml



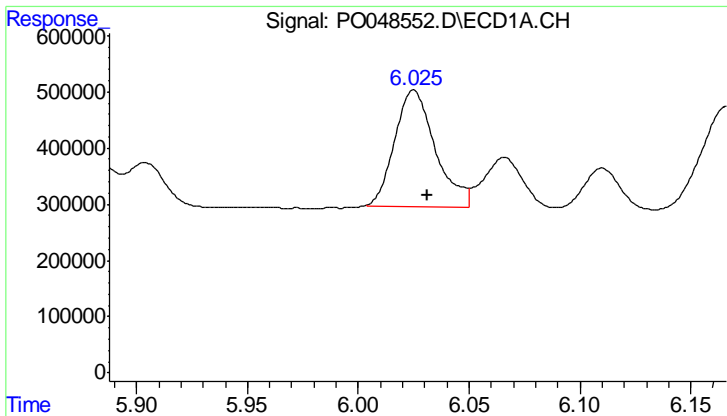
#6 AR-1016-4

R.T.: 5.634 min  
 Delta R.T.: -0.005 min  
 Response: 3466605  
 Conc: 570.22 ng/ml



#6 AR-1016-4

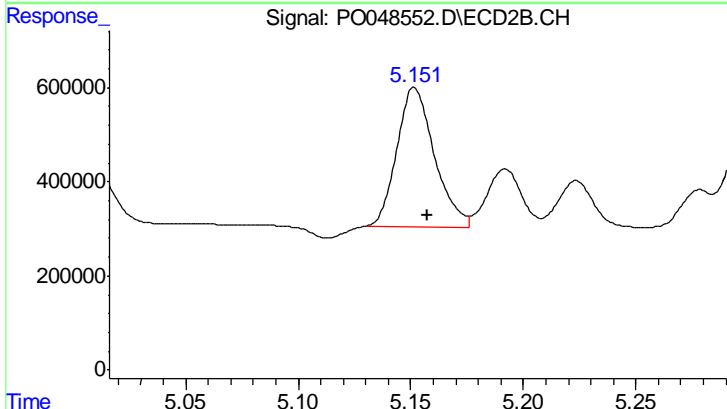
R.T.: 4.778 min  
 Delta R.T.: -0.006 min  
 Response: 4191767  
 Conc: 511.11 ng/ml



#7 AR-1016-5

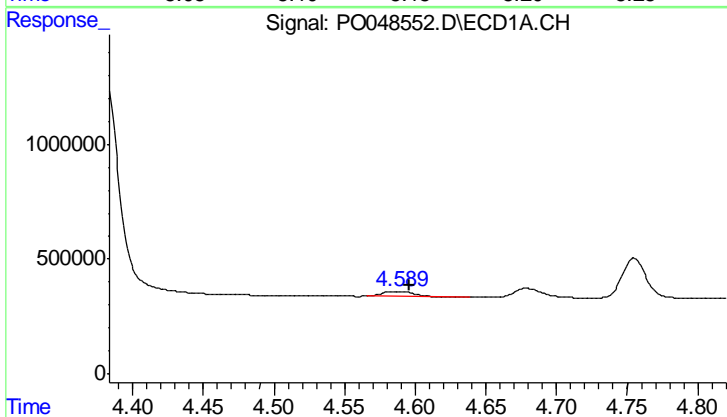
R.T.: 6.025 min  
 Delta R.T.: -0.006 min  
 Response: 2633931  
 Conc: 527.42 ng/ml

Instrument :  
 ECD\_O  
 ClientSampleId :  
 AR1660CCC500



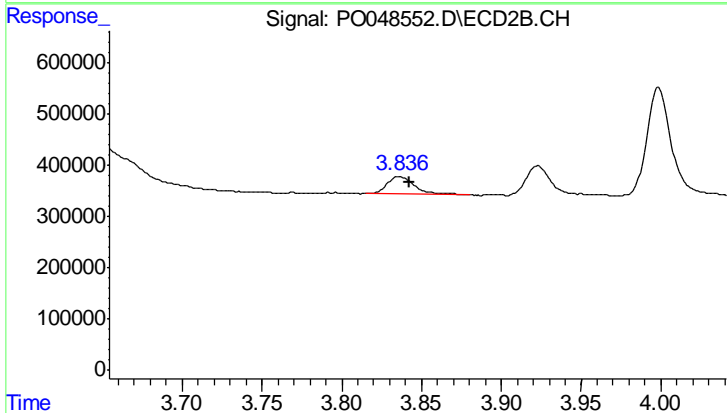
#7 AR-1016-5

R.T.: 5.152 min  
 Delta R.T.: -0.006 min  
 Response: 3433642  
 Conc: 464.54 ng/ml



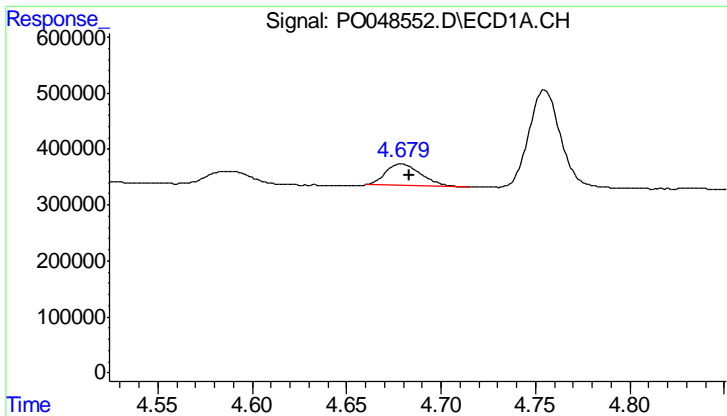
#8 AR-1221-1

R.T.: 4.586 min  
 Delta R.T.: -0.010 min  
 Response: 337738  
 Conc: 160.64 ng/ml



#8 AR-1221-1

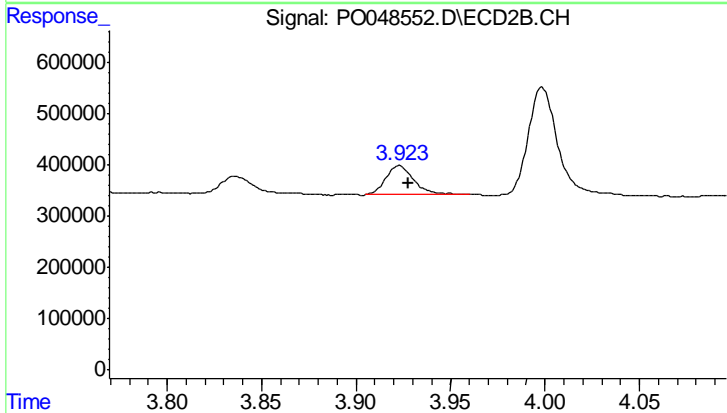
R.T.: 3.836 min  
 Delta R.T.: -0.006 min  
 Response: 390651  
 Conc: 148.44 ng/ml



#9 AR-1221-2

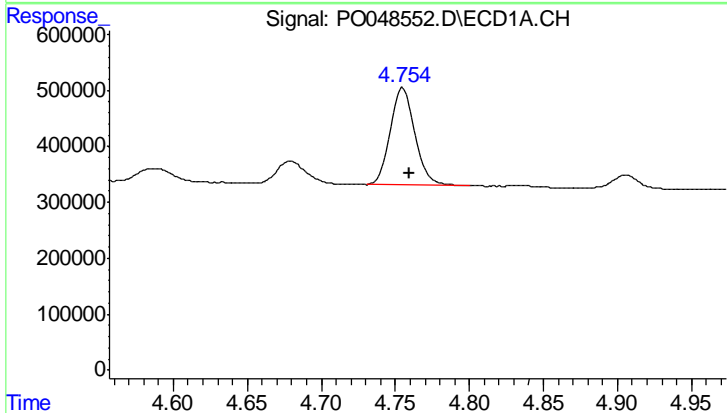
R.T.: 4.679 min  
 Delta R.T.: -0.004 min  
 Response: 504394  
 Conc: 332.68 ng/ml

Instrument :  
 ECD\_O  
 ClientSampleId :  
 AR1660CCC500



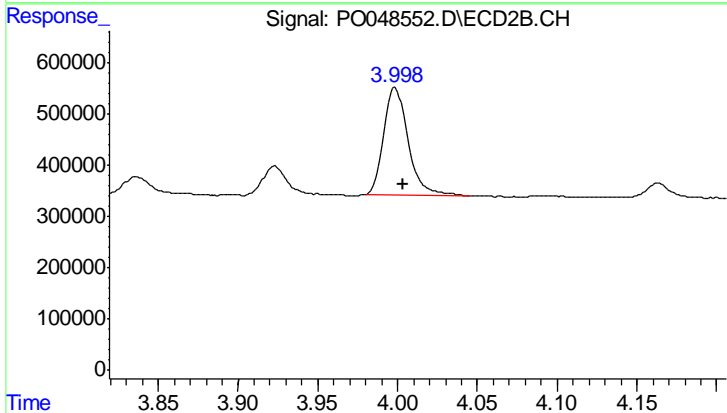
#9 AR-1221-2

R.T.: 3.923 min  
 Delta R.T.: -0.005 min  
 Response: 579419  
 Conc: 301.18 ng/ml



#10 AR-1221-3

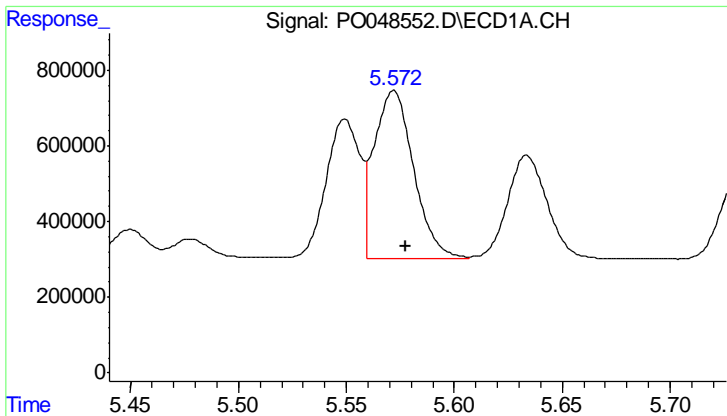
R.T.: 4.755 min  
 Delta R.T.: -0.005 min  
 Response: 2039536  
 Conc: 411.11 ng/ml



#10 AR-1221-3

R.T.: 3.999 min  
 Delta R.T.: -0.005 min  
 Response: 2212573  
 Conc: 354.84 ng/ml

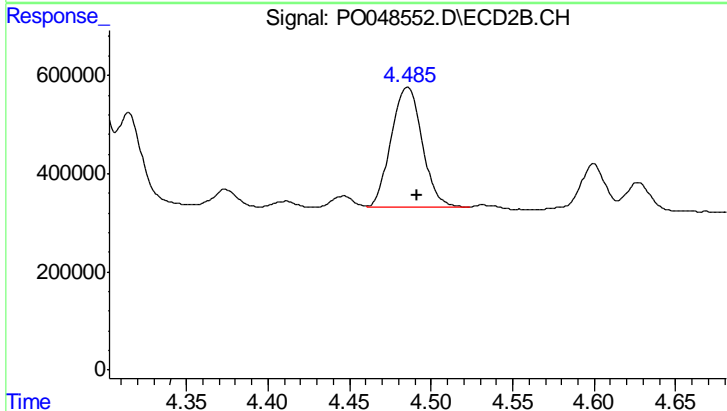




#11 AR-1232-1

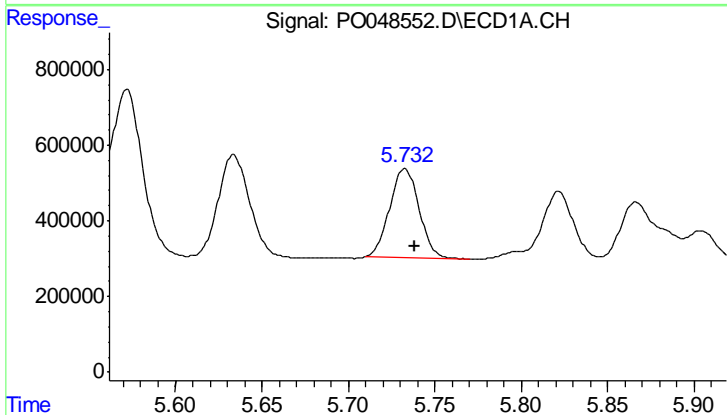
R.T.: 5.572 min  
 Delta R.T.: -0.006 min  
 Response: 5661931  
 Conc: 1260.08 ng/ml

Instrument :  
 ECD\_O  
 ClientSampleId :  
 AR1660CCC500



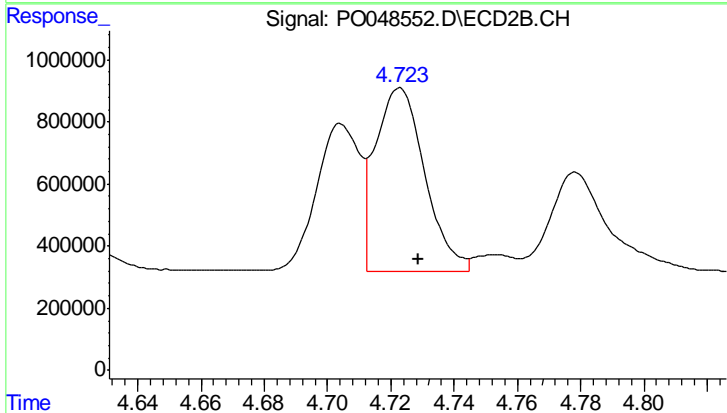
#11 AR-1232-1

R.T.: 4.486 min  
 Delta R.T.: -0.006 min  
 Response: 3241873  
 Conc: 1110.80 ng/ml



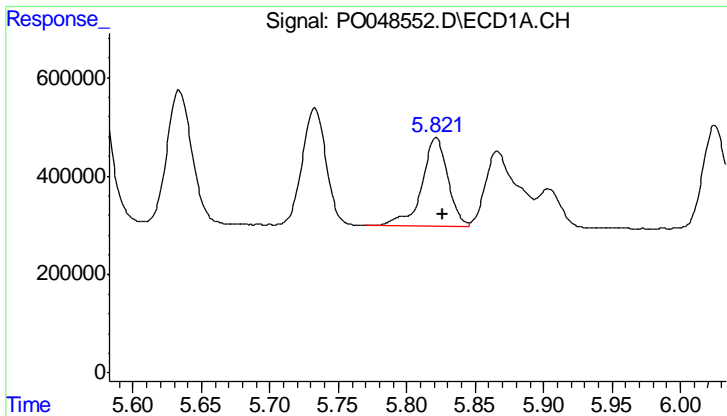
#12 AR-1232-2

R.T.: 5.733 min  
 Delta R.T.: -0.005 min  
 Response: 2783498  
 Conc: 1225.20 ng/ml



#12 AR-1232-2

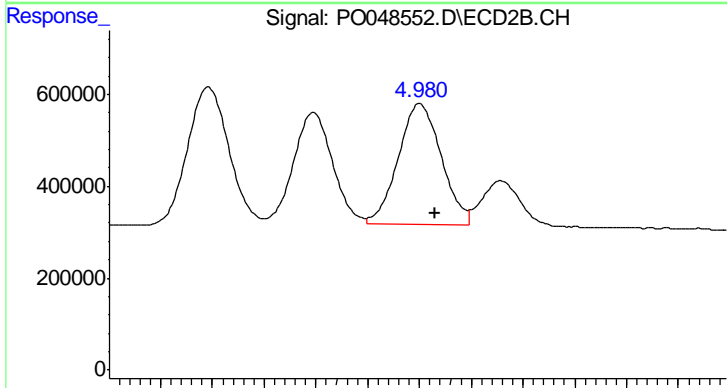
R.T.: 4.723 min  
 Delta R.T.: -0.006 min  
 Response: 6419774  
 Conc: 1072.10 ng/ml



#13 AR-1232-3

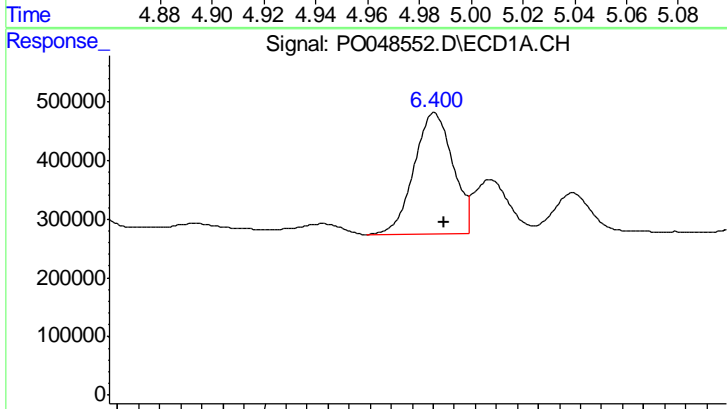
R.T.: 5.821 min  
 Delta R.T.: -0.005 min  
 Response: 2376885  
 Conc: 1413.57 ng/ml

Instrument :  
 ECD\_O  
 ClientSampleId :  
 AR1660CCC500



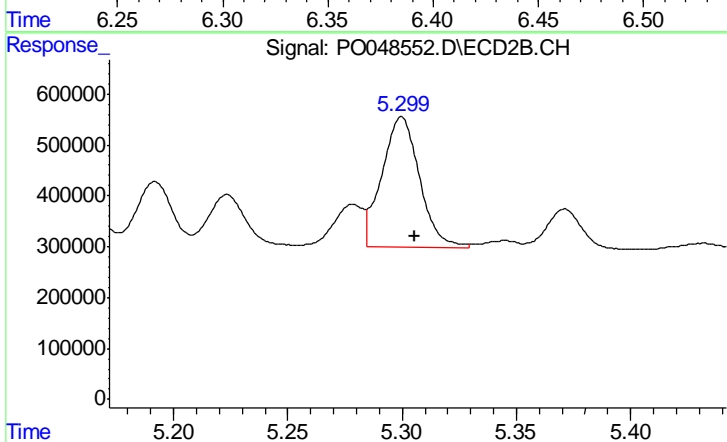
#13 AR-1232-3

R.T.: 4.980 min  
 Delta R.T.: -0.006 min  
 Response: 3052580  
 Conc: 1161.46 ng/ml



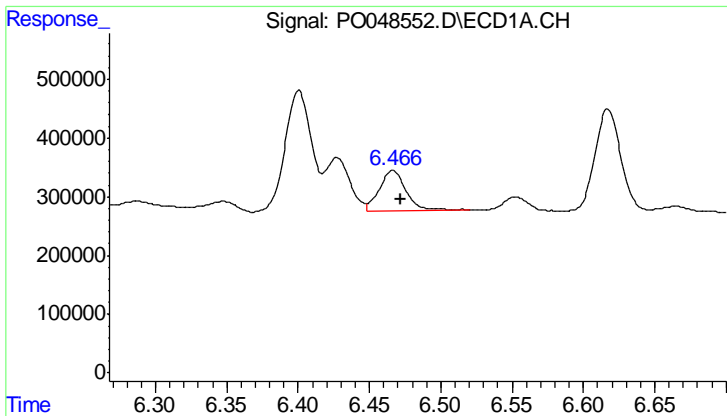
#14 AR-1232-4

R.T.: 6.401 min  
 Delta R.T.: -0.005 min  
 Response: 2651274  
 Conc: 1636.87 ng/ml



#14 AR-1232-4

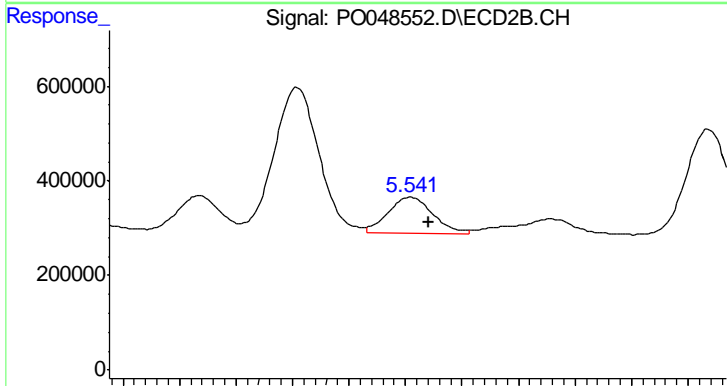
R.T.: 5.300 min  
 Delta R.T.: -0.006 min  
 Response: 2953270  
 Conc: 1064.54 ng/ml



#15 AR-1232-5

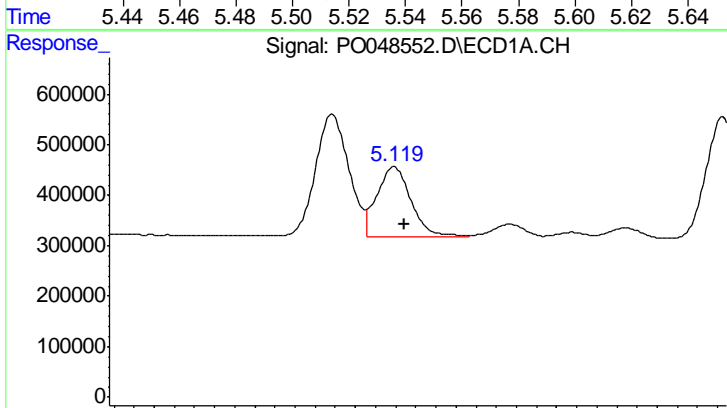
R.T.: 6.466 min  
 Delta R.T.: -0.005 min  
 Response: 867599  
 Conc: 368.73 ng/ml

Instrument :  
 ECD\_O  
 ClientSampleId :  
 AR1660CCC500



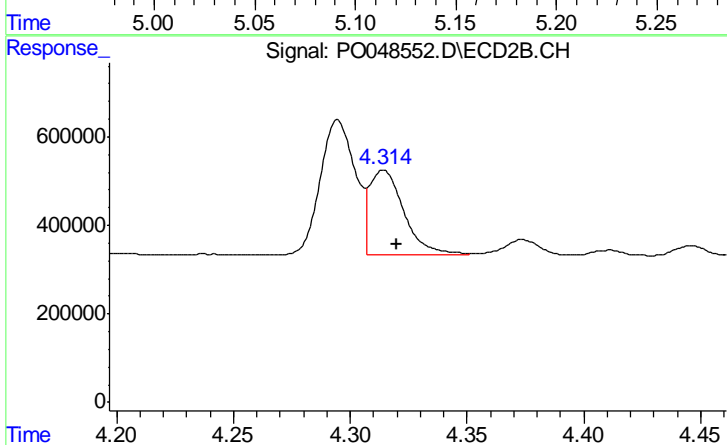
#15 AR-1232-5

R.T.: 5.542 min  
 Delta R.T.: -0.006 min  
 Response: 836903  
 Conc: 271.88 ng/ml



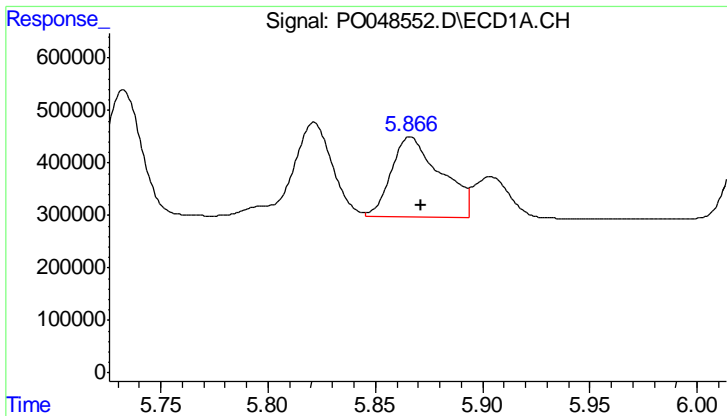
#16 AR-1242-1

R.T.: 5.119 min  
 Delta R.T.: -0.005 min  
 Response: 1640565  
 Conc: 684.82 ng/ml



#16 AR-1242-1

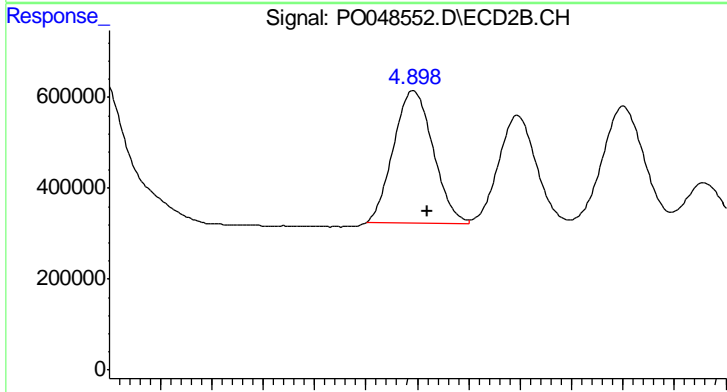
R.T.: 4.314 min  
 Delta R.T.: -0.005 min  
 Response: 2017037  
 Conc: 576.79 ng/ml



#17 AR-1242-2

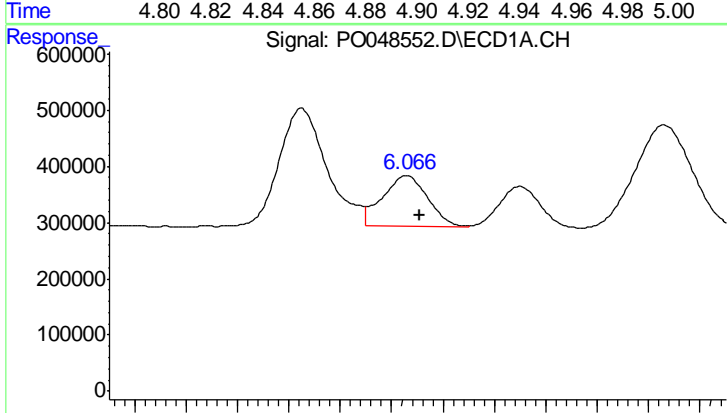
R.T.: 5.866 min  
 Delta R.T.: -0.005 min  
 Response: 2468747  
 Conc: 681.13 ng/ml

Instrument :  
 ECD\_O  
 ClientSampleId :  
 AR1660CCC500



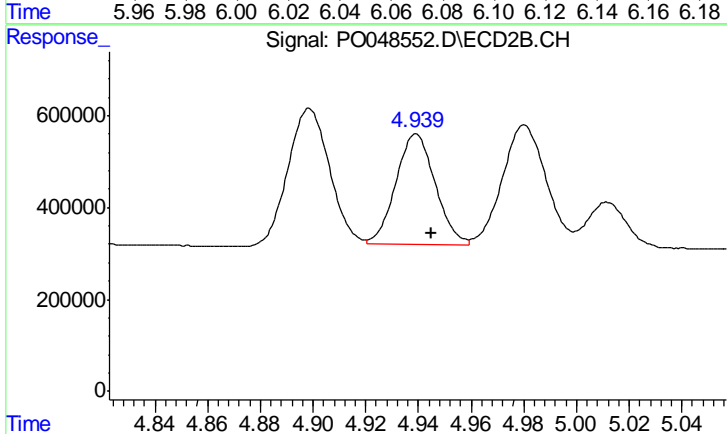
#17 AR-1242-2

R.T.: 4.899 min  
 Delta R.T.: -0.006 min  
 Response: 3151501  
 Conc: 576.15 ng/ml



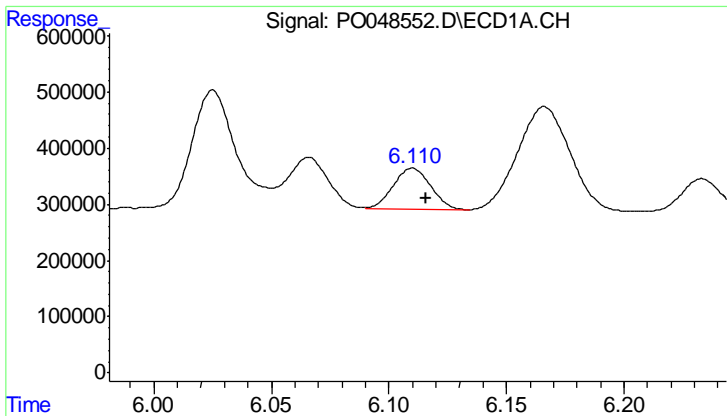
#18 AR-1242-3

R.T.: 6.066 min  
 Delta R.T.: -0.005 min  
 Response: 1088125  
 Conc: 630.59 ng/ml



#18 AR-1242-3

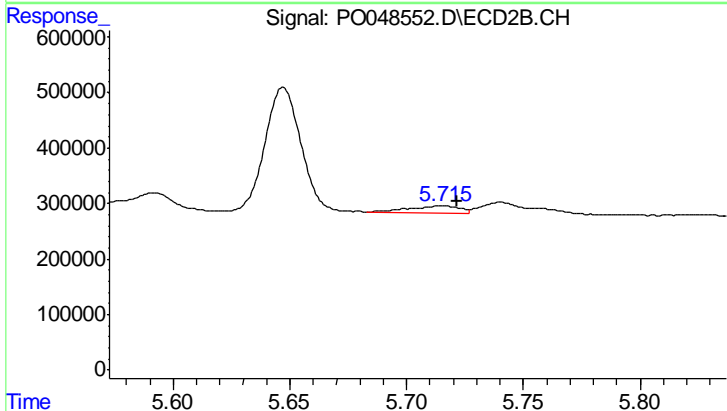
R.T.: 4.939 min  
 Delta R.T.: -0.006 min  
 Response: 2499468  
 Conc: 595.60 ng/ml



#19 AR-1242-4

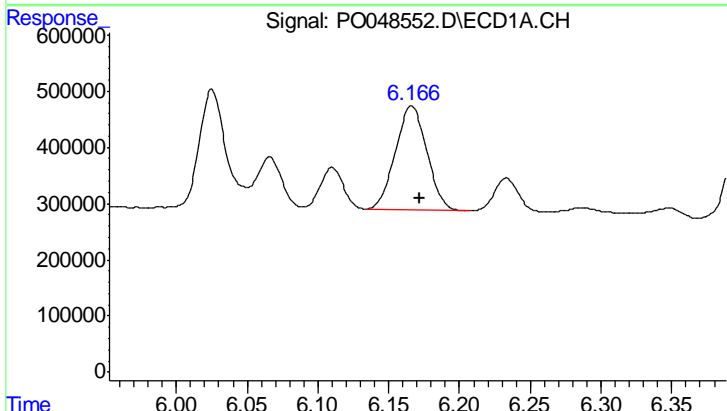
R.T.: 6.110 min  
 Delta R.T.: -0.006 min  
 Response: 804792  
 Conc: 623.80 ng/ml

Instrument :  
 ECD\_O  
 ClientSampleId :  
 AR1660CCC500



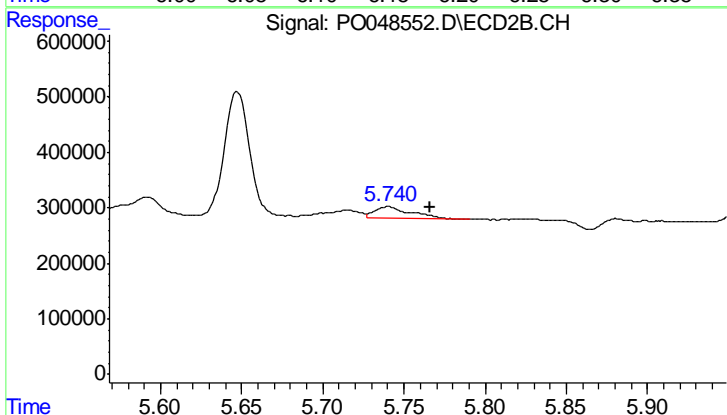
#19 AR-1242-4

R.T.: 5.715 min  
 Delta R.T.: -0.006 min  
 Response: 204882  
 Conc: 46.48 ng/ml



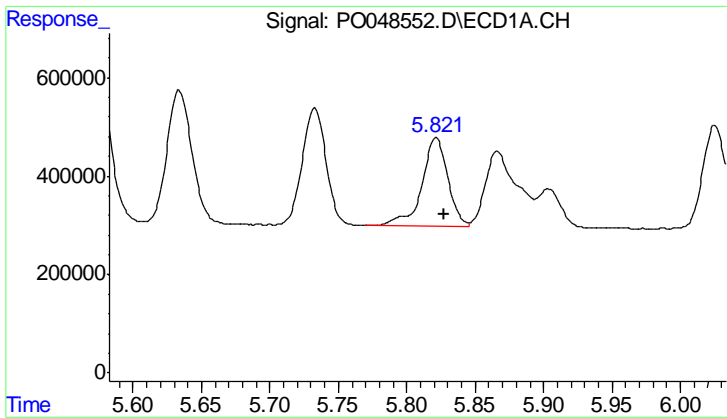
#20 AR-1242-5

R.T.: 6.166 min  
 Delta R.T.: -0.006 min  
 Response: 2878743  
 Conc: 644.21 ng/ml



#20 AR-1242-5

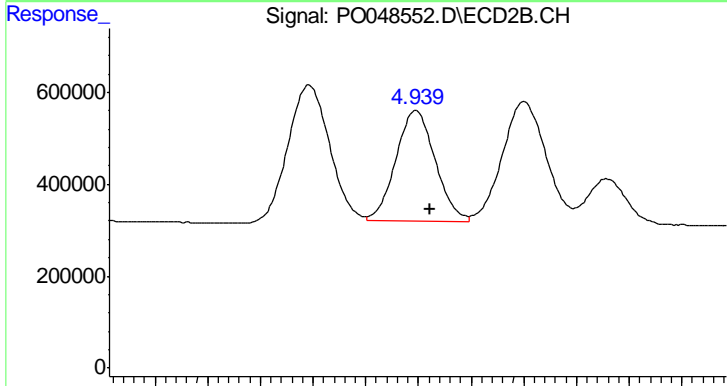
R.T.: 5.740 min  
 Delta R.T.: -0.026 min  
 Response: 314764  
 Conc: 85.62 ng/ml



#21 AR-1248-1

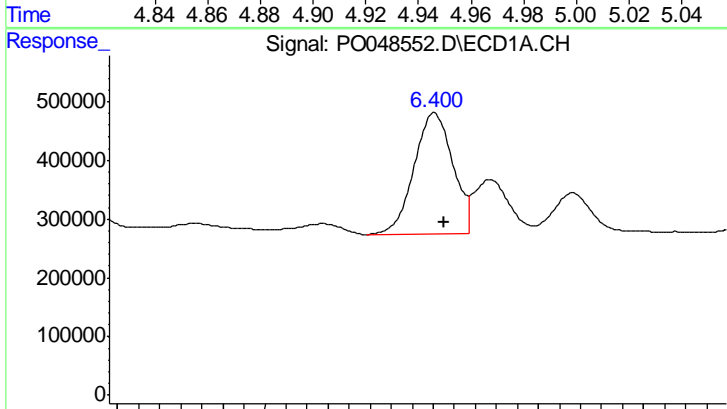
R.T.: 5.821 min  
 Delta R.T.: -0.006 min  
 Response: 2376885  
 Conc: 402.64 ng/ml

Instrument :  
 ECD\_O  
 ClientSampleId :  
 AR1660CCC500



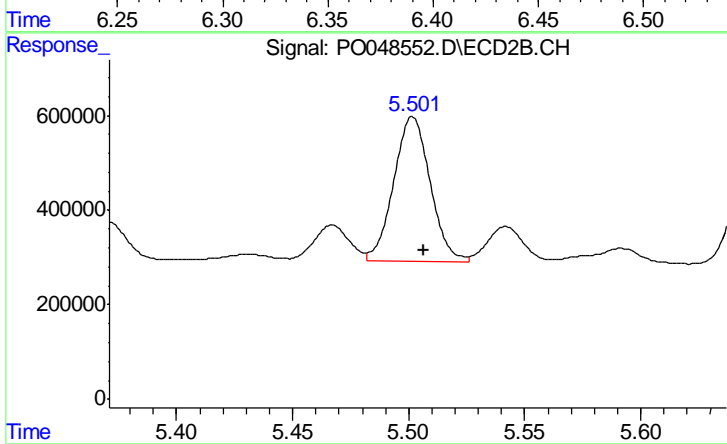
#21 AR-1248-1

R.T.: 4.939 min  
 Delta R.T.: -0.005 min  
 Response: 2499468  
 Conc: 329.83 ng/ml



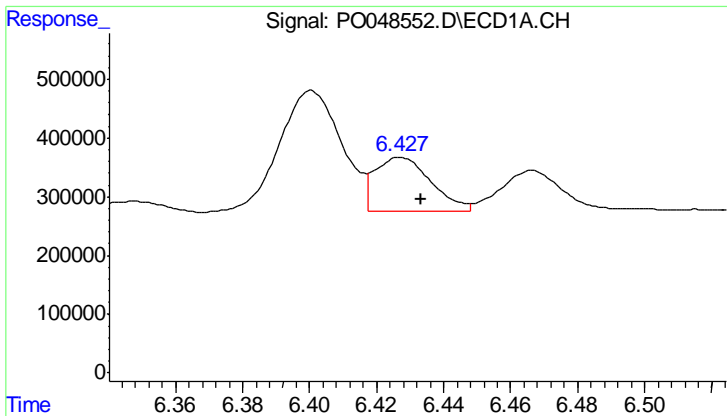
#22 AR-1248-2

R.T.: 6.401 min  
 Delta R.T.: -0.004 min  
 Response: 2651274  
 Conc: 456.16 ng/ml



#22 AR-1248-2

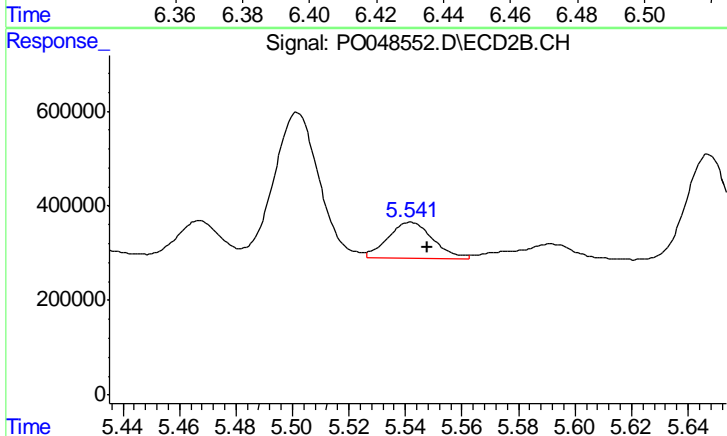
R.T.: 5.502 min  
 Delta R.T.: -0.005 min  
 Response: 3398168  
 Conc: 258.11 ng/ml



#23 AR-1248-3

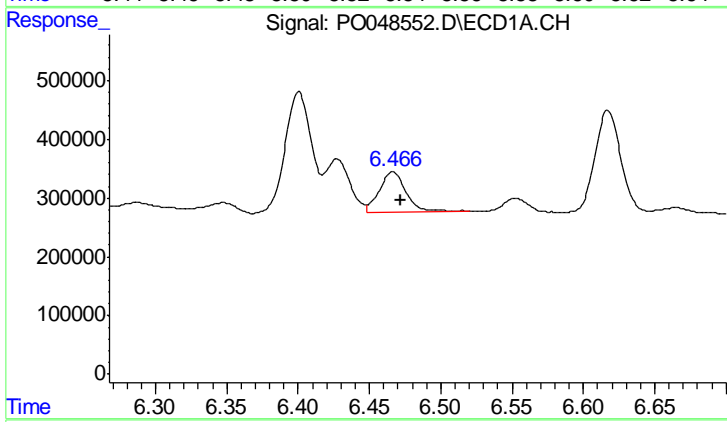
R.T.: 6.427 min  
 Delta R.T.: -0.006 min  
 Response: 1067951  
 Conc: 138.39 ng/ml

Instrument :  
 ECD\_O  
 ClientSampleId :  
 AR1660CCC500



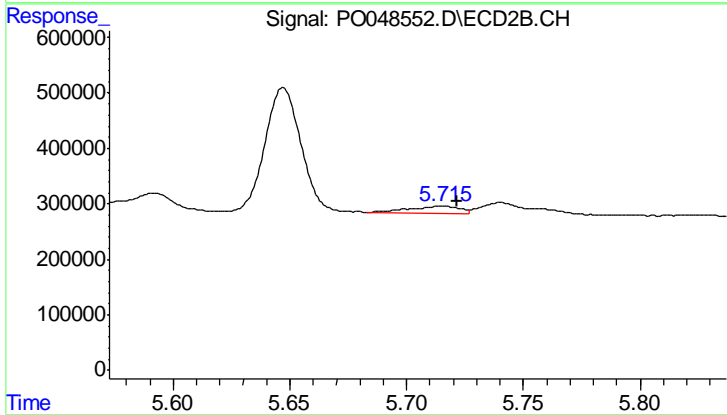
#23 AR-1248-3

R.T.: 5.542 min  
 Delta R.T.: -0.006 min  
 Response: 836903  
 Conc: 91.73 ng/ml



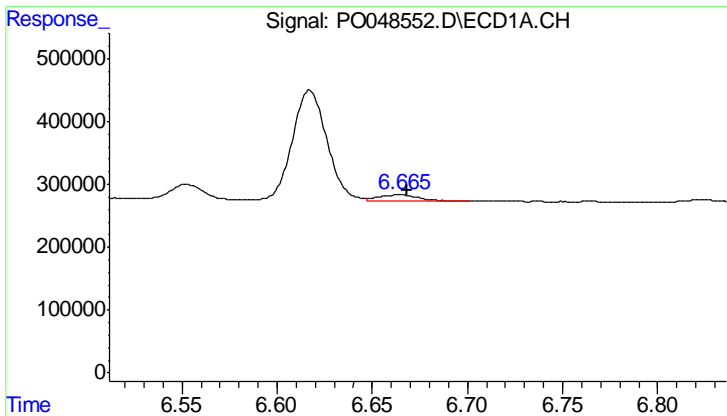
#24 AR-1248-4

R.T.: 6.466 min  
 Delta R.T.: -0.005 min  
 Response: 867599  
 Conc: 118.44 ng/ml



#24 AR-1248-4

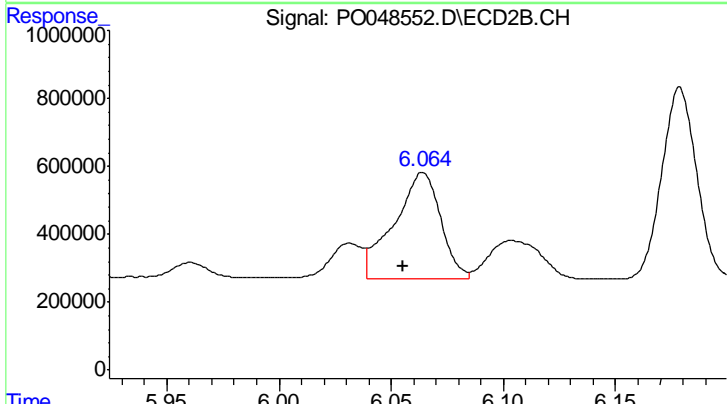
R.T.: 5.715 min  
 Delta R.T.: -0.006 min  
 Response: 204882  
 Conc: 25.96 ng/ml



#25 AR-1248-5

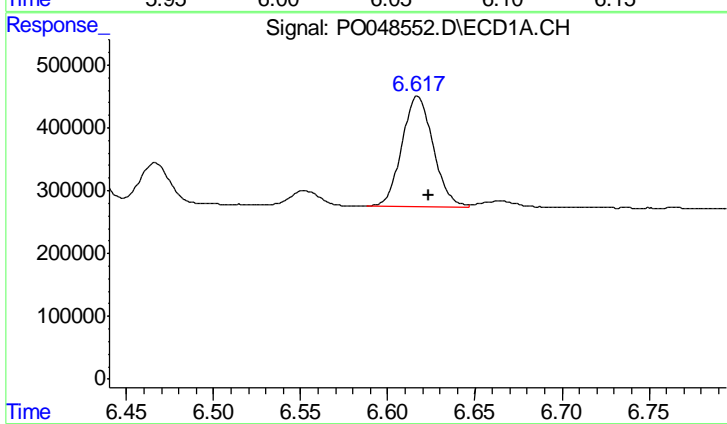
R.T.: 6.665 min  
 Delta R.T.: -0.003 min  
 Response: 147335  
 Conc: 30.45 ng/ml

Instrument :  
 ECD\_O  
 ClientSampled :  
 AR1660CCC500



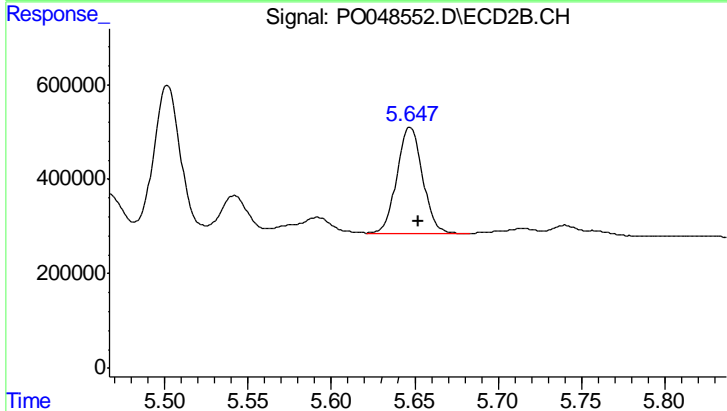
#25 AR-1248-5

R.T.: 6.064 min  
 Delta R.T.: 0.009 min  
 Response: 4536109  
 Conc: 756.76 ng/ml



#26 AR-1254-1

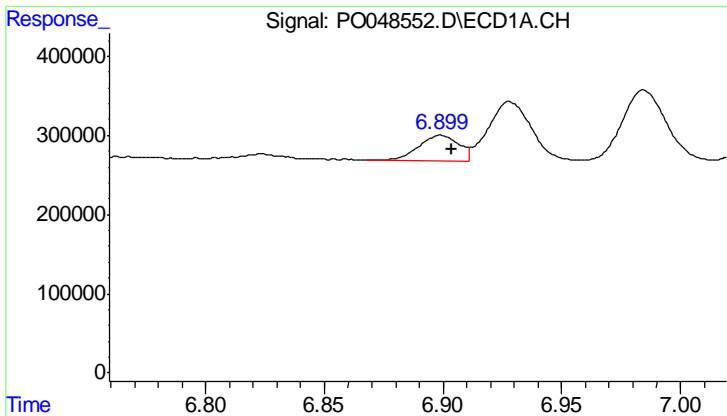
R.T.: 6.617 min  
 Delta R.T.: -0.006 min  
 Response: 2205840  
 Conc: 162.50 ng/ml



#26 AR-1254-1

R.T.: 5.647 min  
 Delta R.T.: -0.005 min  
 Response: 2409788  
 Conc: 167.49 ng/ml

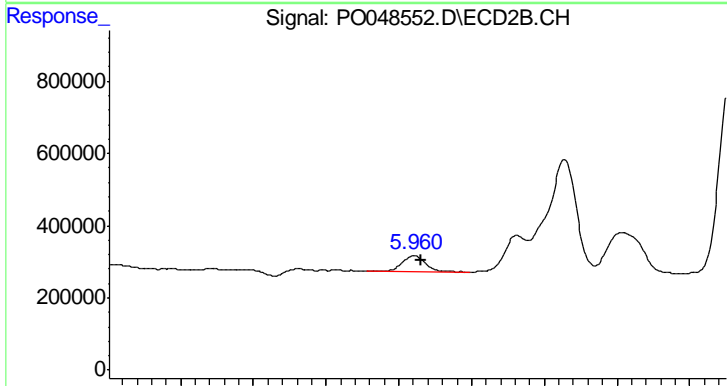




#27 AR-1254-2

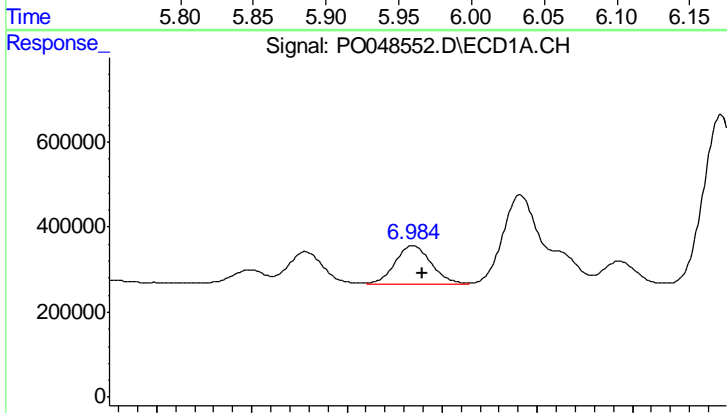
R.T.: 6.899 min  
 Delta R.T.: -0.005 min  
 Response: 377078  
 Conc: 45.69 ng/ml

Instrument :  
 ECD\_O  
 ClientSampleId :  
 AR1660CCC500



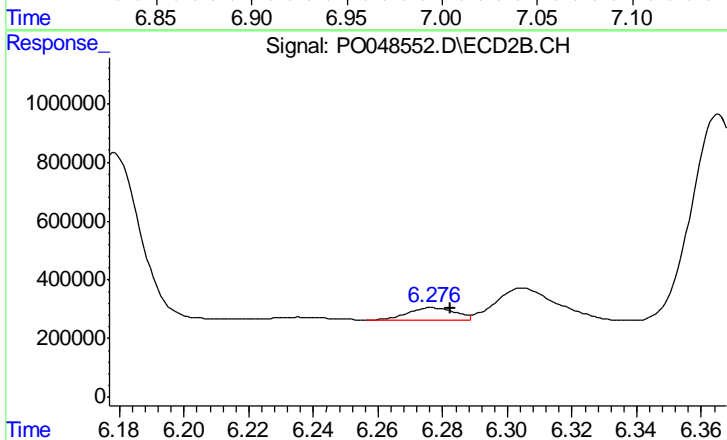
#27 AR-1254-2

R.T.: 5.960 min  
 Delta R.T.: -0.005 min  
 Response: 490461  
 Conc: 42.35 ng/ml



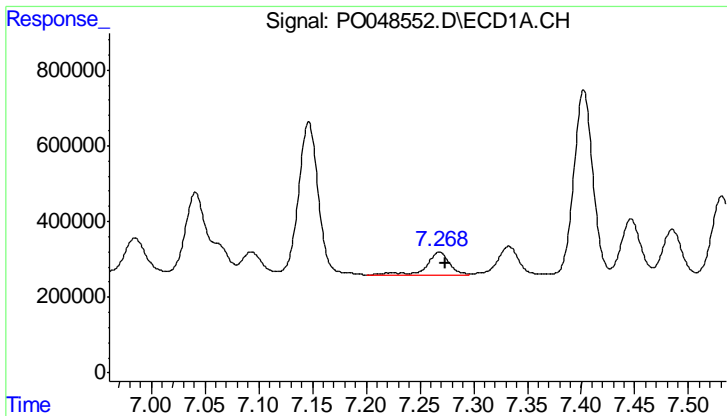
#28 AR-1254-3

R.T.: 6.985 min  
 Delta R.T.: -0.005 min  
 Response: 1229658  
 Conc: 85.70 ng/ml



#28 AR-1254-3

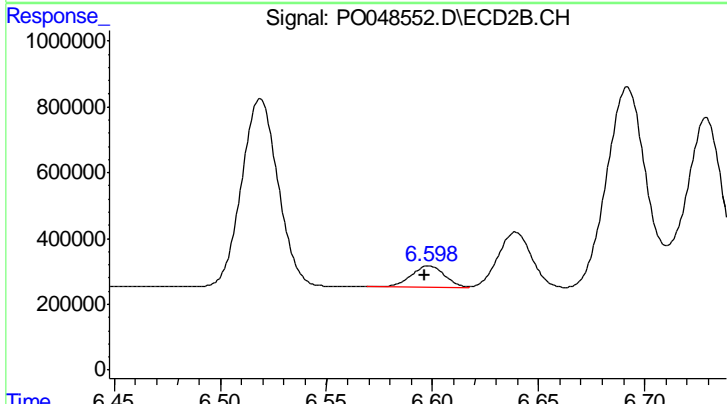
R.T.: 6.277 min  
 Delta R.T.: -0.005 min  
 Response: 429293  
 Conc: 29.31 ng/ml



#29 AR-1254-4

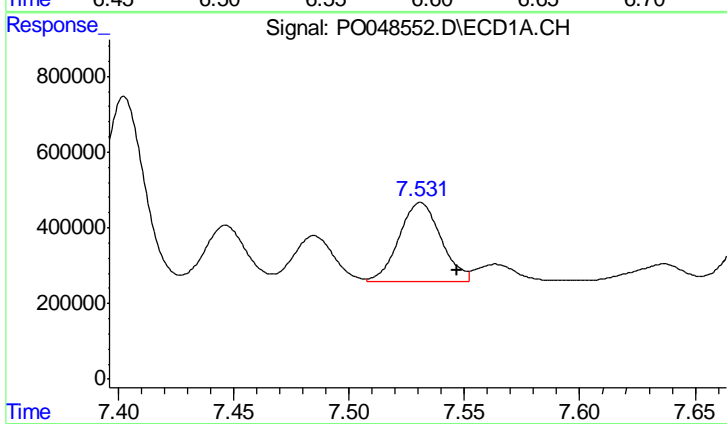
R.T.: 7.268 min  
 Delta R.T.: -0.006 min  
 Response: 903836  
 Conc: 82.24 ng/ml

Instrument :  
 ECD\_O  
 ClientSampleId :  
 AR1660CCC500



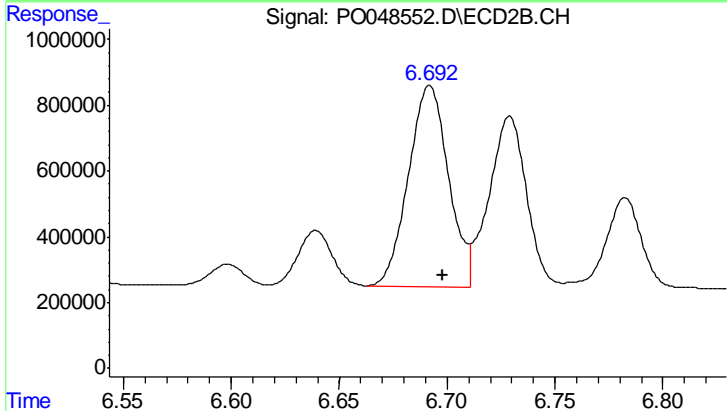
#29 AR-1254-4

R.T.: 6.598 min  
 Delta R.T.: 0.002 min  
 Response: 713047  
 Conc: 72.46 ng/ml



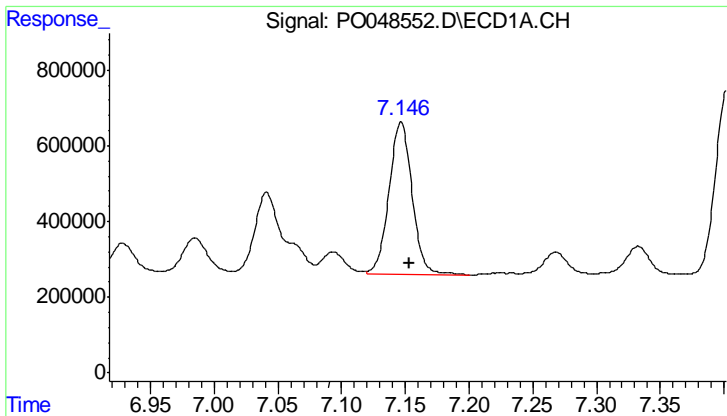
#30 AR-1254-5

R.T.: 7.531 min  
 Delta R.T.: -0.016 min  
 Response: 2661839  
 Conc: 326.62 ng/ml



#30 AR-1254-5

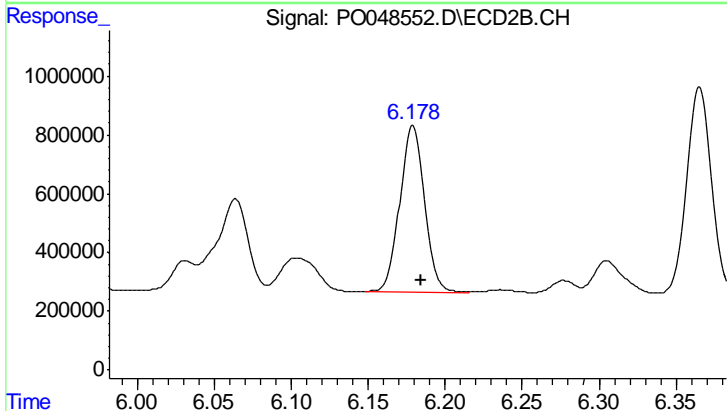
R.T.: 6.692 min  
 Delta R.T.: -0.006 min  
 Response: 7916195  
 Conc: 406.23 ng/ml



#31 AR-1260-1

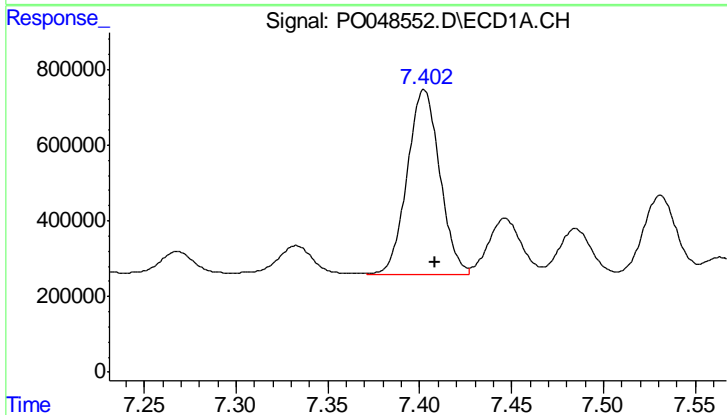
R.T.: 7.147 min  
 Delta R.T.: -0.006 min  
 Response: 5110266  
 Conc: 513.01 ng/ml

Instrument :  
 ECD\_O  
 ClientSampled :  
 AR1660CCC500



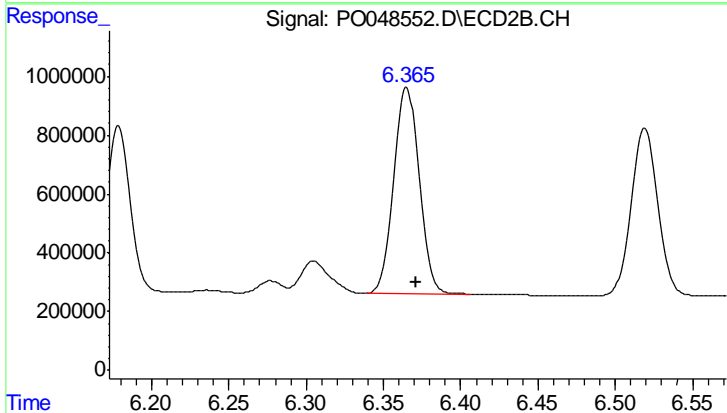
#31 AR-1260-1

R.T.: 6.179 min  
 Delta R.T.: -0.006 min  
 Response: 6209587  
 Conc: 448.39 ng/ml



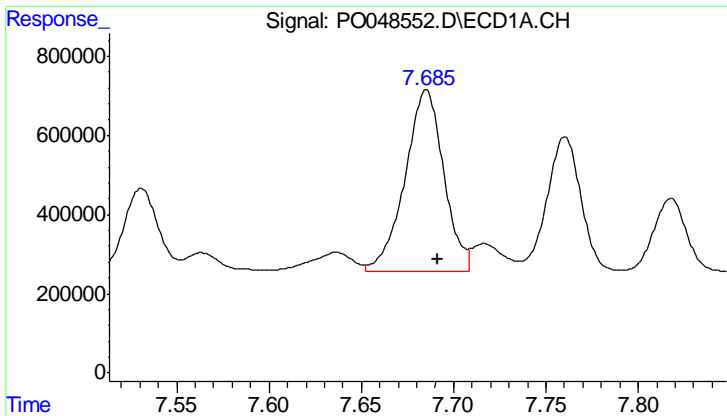
#32 AR-1260-2

R.T.: 7.402 min  
 Delta R.T.: -0.006 min  
 Response: 6028063  
 Conc: 503.22 ng/ml



#32 AR-1260-2

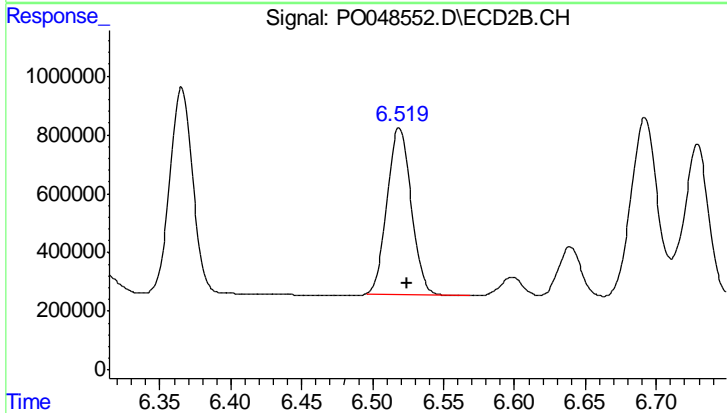
R.T.: 6.365 min  
 Delta R.T.: -0.006 min  
 Response: 7848435  
 Conc: 447.37 ng/ml



#33 AR-1260-3

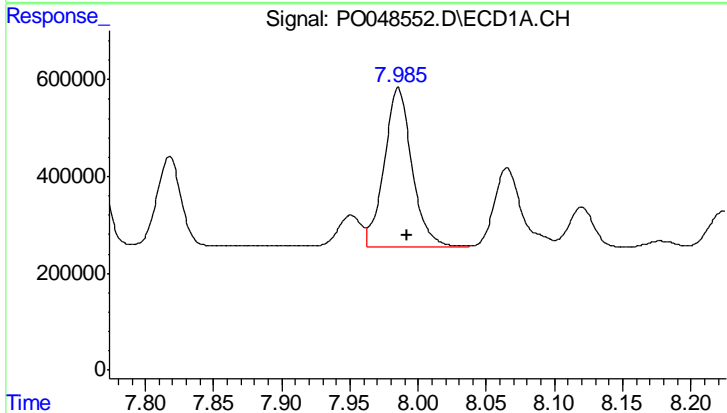
R.T.: 7.685 min  
 Delta R.T.: -0.006 min  
 Response: 6685937  
 Conc: 487.15 ng/ml

Instrument :  
 ECD\_O  
 ClientSampleId :  
 AR1660CCC500



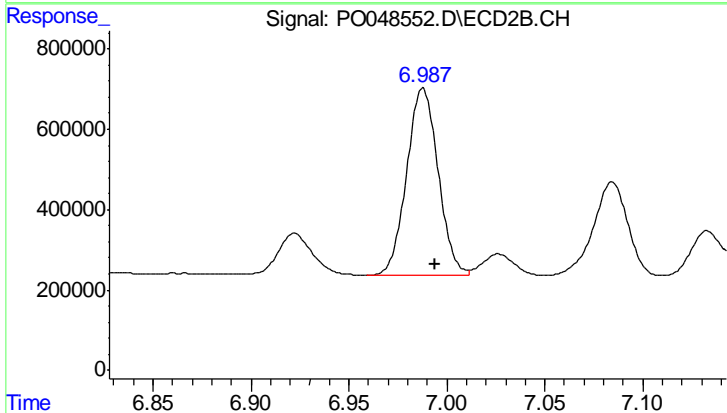
#33 AR-1260-3

R.T.: 6.519 min  
 Delta R.T.: -0.006 min  
 Response: 6710849  
 Conc: 437.67 ng/ml



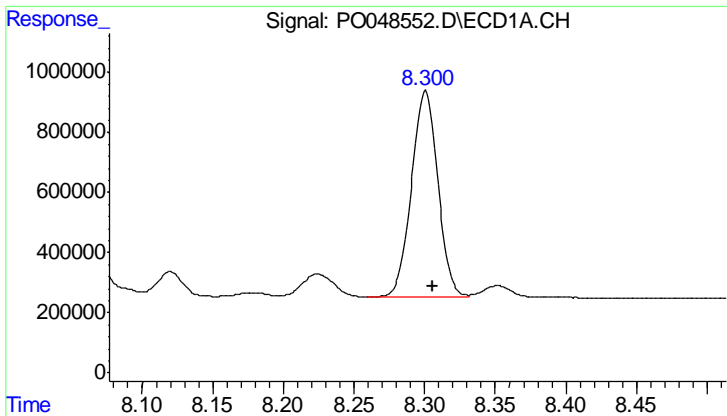
#34 AR-1260-4

R.T.: 7.985 min  
 Delta R.T.: -0.006 min  
 Response: 4649465  
 Conc: 469.61 ng/ml



#34 AR-1260-4

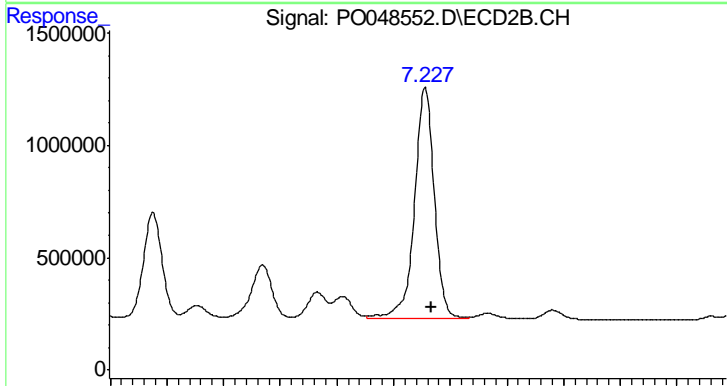
R.T.: 6.988 min  
 Delta R.T.: -0.006 min  
 Response: 5216696  
 Conc: 448.18 ng/ml



#35 AR-1260-5

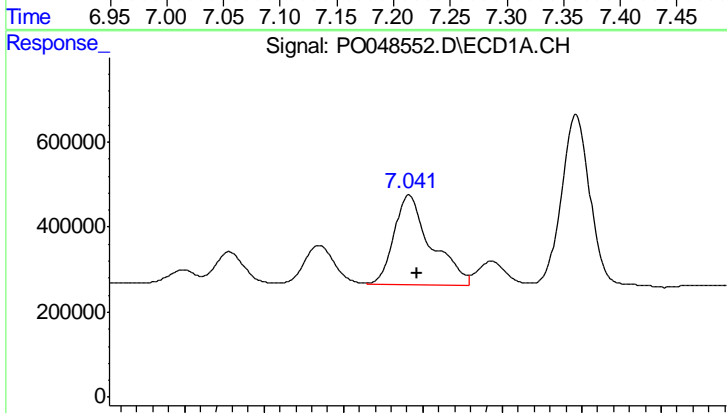
R.T.: 8.301 min  
 Delta R.T.: -0.005 min  
 Response: 8971321  
 Conc: 469.95 ng/ml

Instrument :  
 ECD\_O  
 ClientSampleId :  
 AR1660CCC500



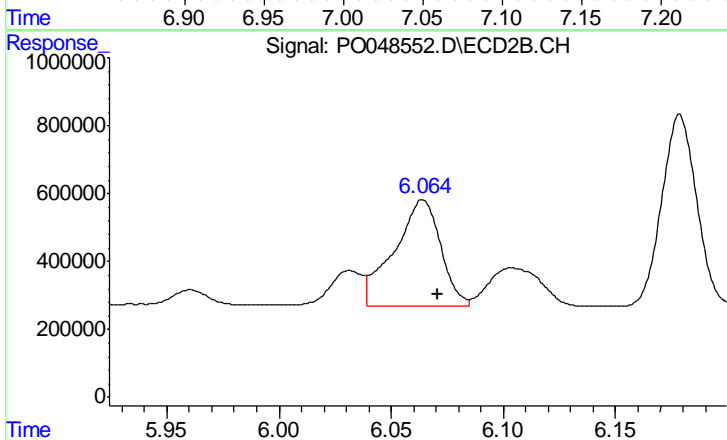
#35 AR-1260-5

R.T.: 7.228 min  
 Delta R.T.: -0.006 min  
 Response: 12493941  
 Conc: 461.40 ng/ml



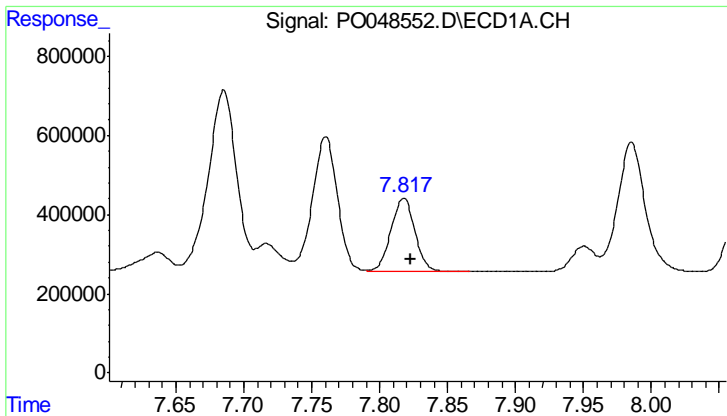
#36 AR-1262-1

R.T.: 7.041 min  
 Delta R.T.: -0.005 min  
 Response: 3470892  
 Conc: 444.42 ng/ml



#36 AR-1262-1

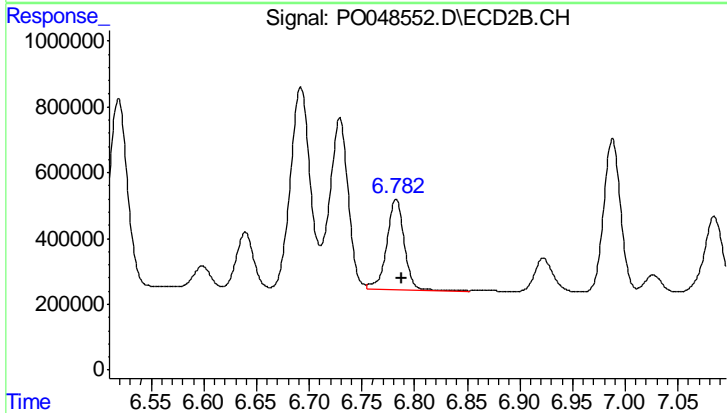
R.T.: 6.064 min  
 Delta R.T.: -0.007 min  
 Response: 4536109  
 Conc: 426.74 ng/ml



#37 AR-1262-2

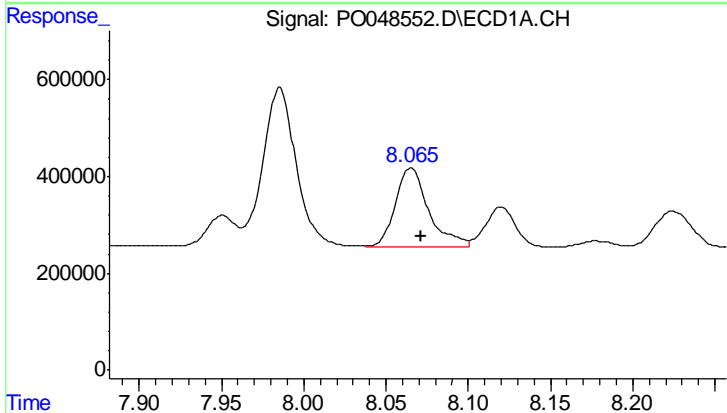
R.T.: 7.818 min  
 Delta R.T.: -0.005 min  
 Response: 2265785  
 Conc: 351.89 ng/ml

Instrument :  
 ECD\_O  
 ClientSampled :  
 AR1660CCC500



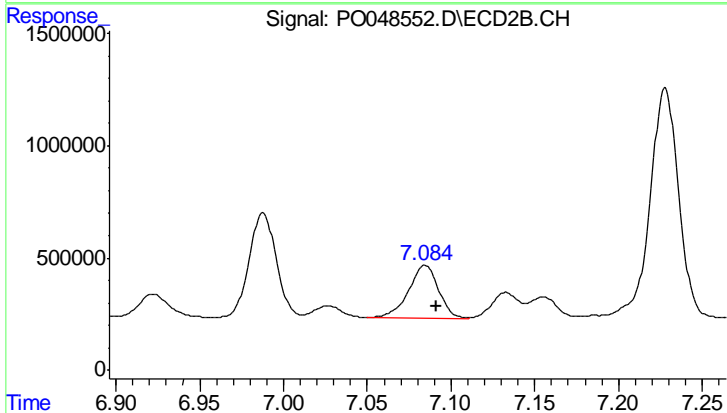
#37 AR-1262-2

R.T.: 6.782 min  
 Delta R.T.: -0.006 min  
 Response: 3194048  
 Conc: 334.13 ng/ml



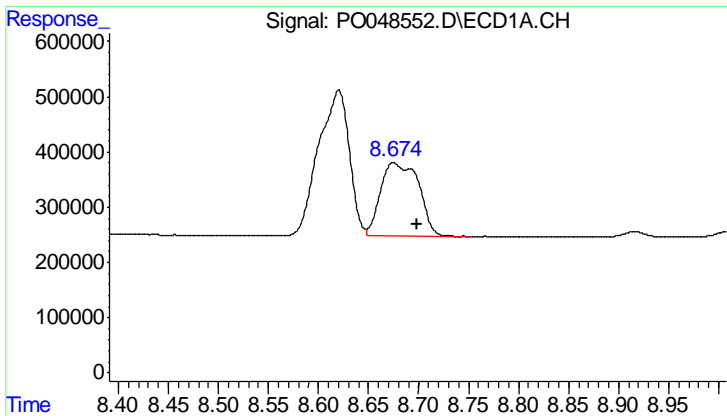
#38 AR-1262-3

R.T.: 8.065 min  
 Delta R.T.: -0.006 min  
 Response: 2320942  
 Conc: 336.14 ng/ml



#38 AR-1262-3

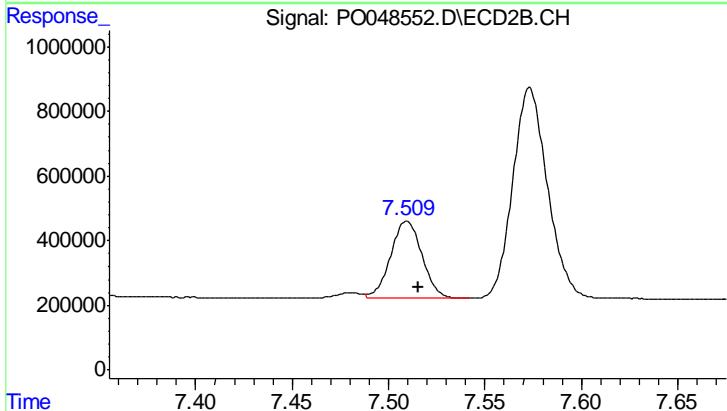
R.T.: 7.084 min  
 Delta R.T.: -0.006 min  
 Response: 2927563  
 Conc: 310.07 ng/ml



#39 AR-1262-4

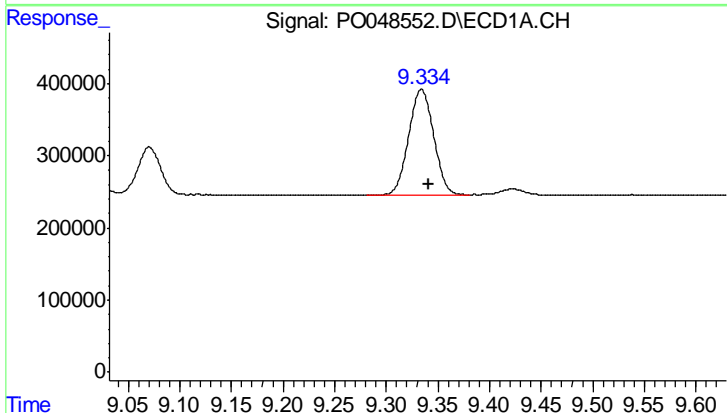
R.T.: 8.675 min  
 Delta R.T.: -0.024 min  
 Response: 3530253  
 Conc: 258.45 ng/ml

Instrument :  
 ECD\_O  
 ClientSampleId :  
 AR1660CCC500



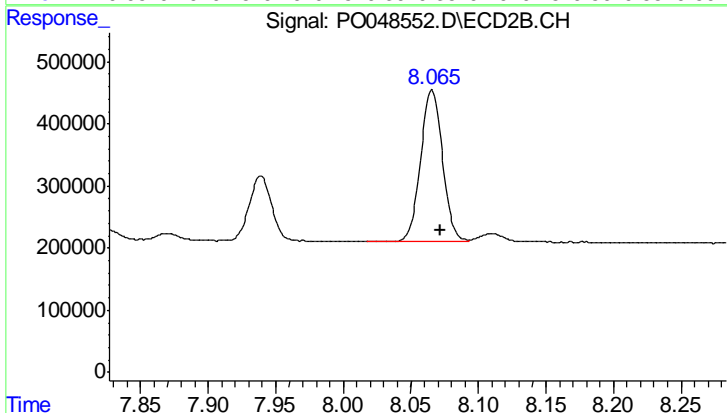
#39 AR-1262-4

R.T.: 7.510 min  
 Delta R.T.: -0.006 min  
 Response: 2721301  
 Conc: 202.22 ng/ml



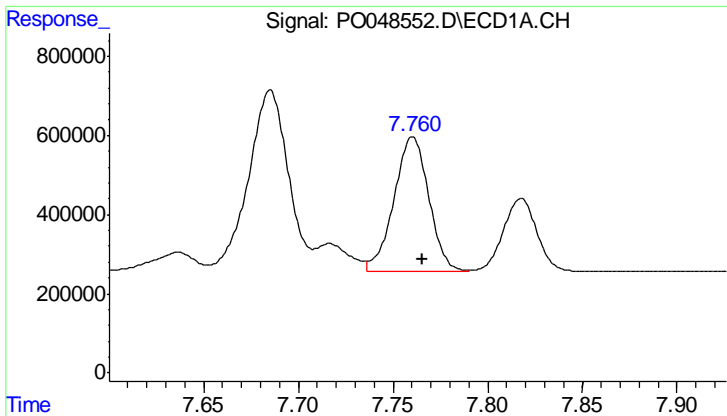
#40 AR-1262-5

R.T.: 9.334 min  
 Delta R.T.: -0.008 min  
 Response: 2489802  
 Conc: 269.27 ng/ml



#40 AR-1262-5

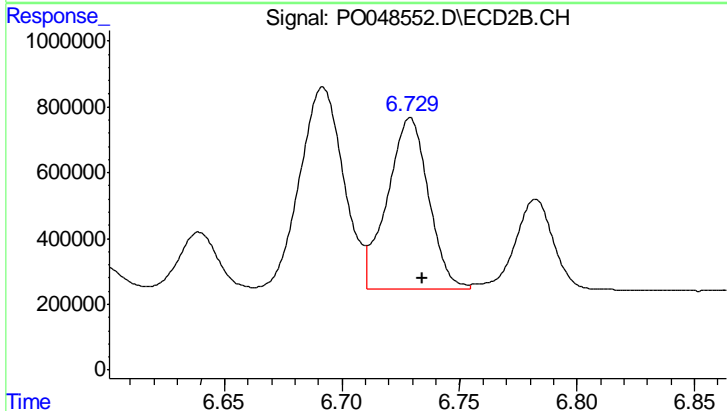
R.T.: 8.066 min  
 Delta R.T.: -0.006 min  
 Response: 2759442  
 Conc: 267.92 ng/ml



#41 AR-1268-1

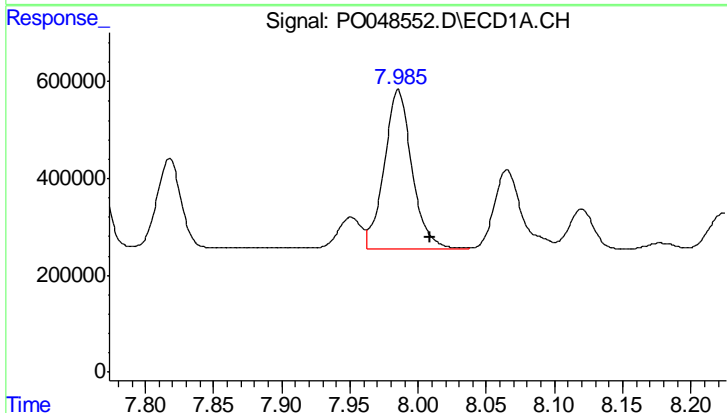
R.T.: 7.760 min  
 Delta R.T.: -0.005 min  
 Response: 4352450  
 Conc: 820.28 ng/ml

Instrument :  
 ECD\_O  
 ClientSampleId :  
 AR1660CCC500



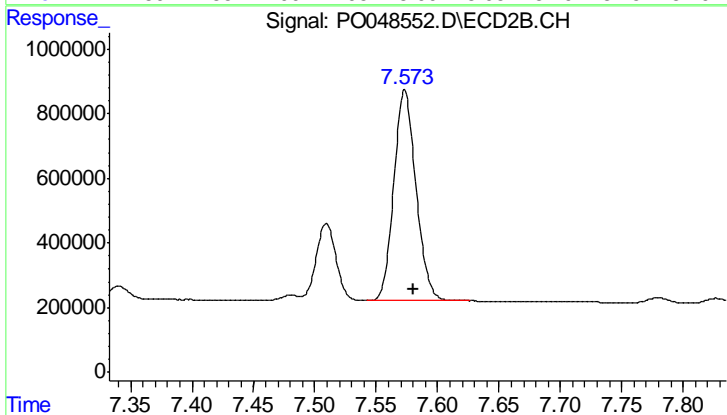
#41 AR-1268-1

R.T.: 6.729 min  
 Delta R.T.: -0.005 min  
 Response: 6373797  
 Conc: 824.00 ng/ml



#42 AR-1268-2

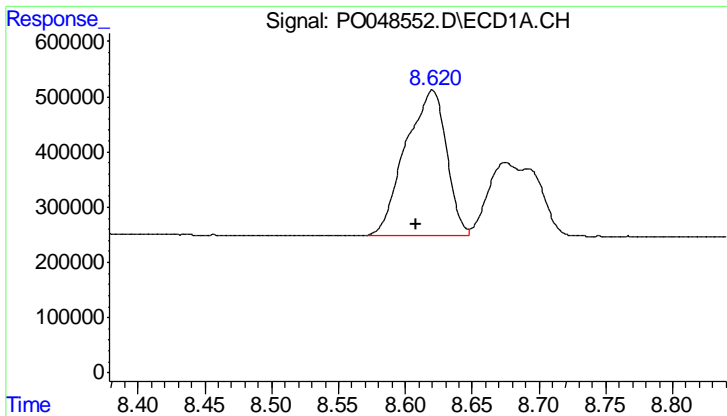
R.T.: 7.985 min  
 Delta R.T.: -0.023 min  
 Response: 4649465  
 Conc: 680.88 ng/ml



#42 AR-1268-2

R.T.: 7.573 min  
 Delta R.T.: -0.007 min  
 Response: 8179824  
 Conc: 271.00 ng/ml

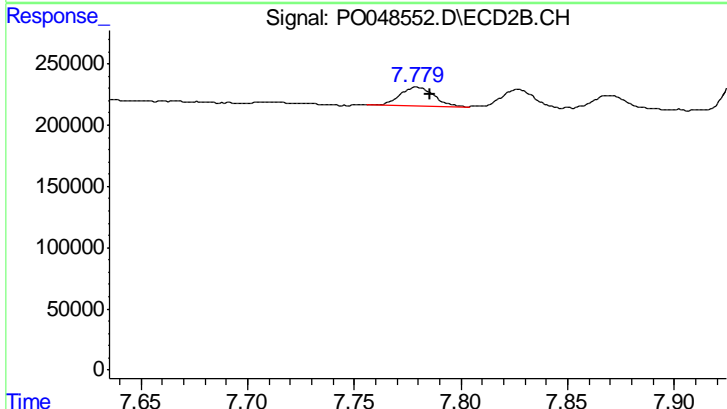




#43 AR-1268-3

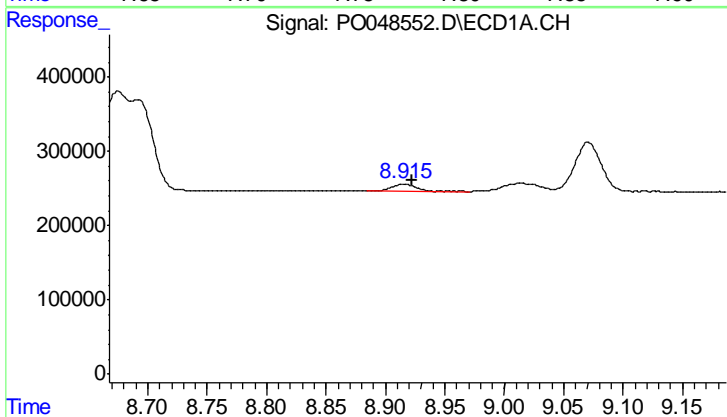
R.T.: 8.620 min  
 Delta R.T.: 0.012 min  
 Response: 5620528  
 Conc: 217.86 ng/ml

Instrument :  
 ECD\_O  
 ClientSampleId :  
 AR1660CCC500



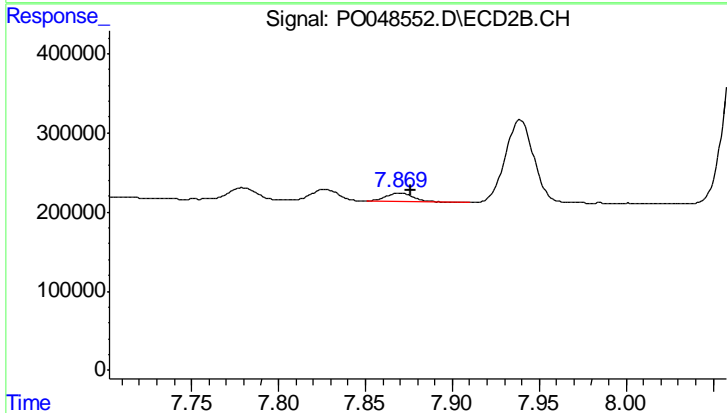
#43 AR-1268-3

R.T.: 7.780 min  
 Delta R.T.: -0.006 min  
 Response: 169872  
 Conc: 6.84 ng/ml



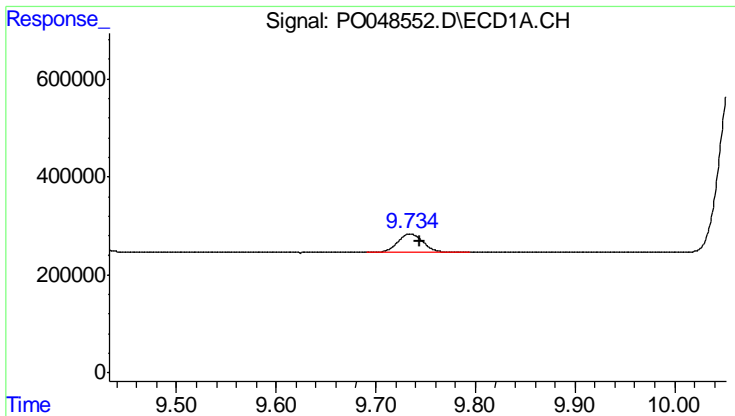
#44 AR-1268-4

R.T.: 8.915 min  
 Delta R.T.: -0.007 min  
 Response: 138407  
 Conc: 6.72 ng/ml



#44 AR-1268-4

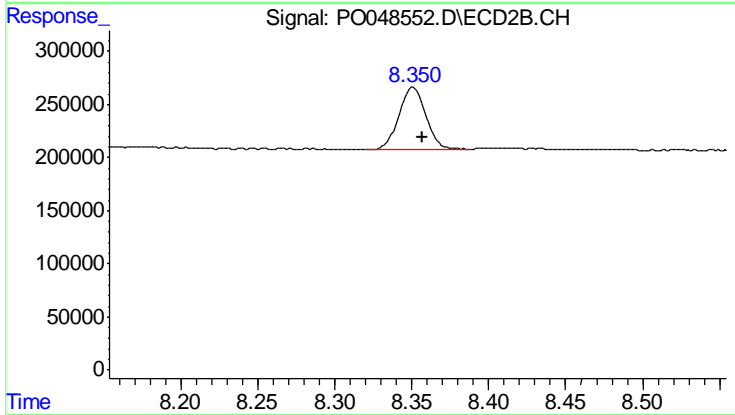
R.T.: 7.869 min  
 Delta R.T.: -0.006 min  
 Response: 108576  
 Conc: 16.60 ng/ml



#45 AR-1268-5

R.T.: 9.735 min  
Delta R.T.: -0.009 min  
Response: 676244  
Conc: 11.14 ng/ml

Instrument :  
ECD\_O  
ClientSampled :  
AR1660CCC500



#45 AR-1268-5

R.T.: 8.350 min  
Delta R.T.: -0.006 min  
Response: 703899  
Conc: 11.31 ng/ml