

Data Path : Z:\pestpcbsrv\HPCHEM1\ECD O\Data\PO082718\  
 Data File : PO048570.D  
 Signal(s) : Signal #1: ECD1A.CH Signal #2: ECD2B.CH  
 Acq On : 28 Aug 2018 1:54  
 Operator : SM/SJ  
 Sample : I.BLK  
 Misc :  
 ALS Vial : 2 Sample Multiplier: 1

**Instrument :**  
 ECD\_O  
**ClientSampled :**  
 I.BLK

**Manual Integrations**  
**APPROVED**  
 Sohil  
 8/28/2018 2:32:02 PM

Integration File signal 1: autoint1.e  
 Integration File signal 2: autoint2.e  
 Quant Time: Aug 28 08:12:08 2018  
 Quant Method : Z:\pestpcbsrv\HPCHEM1\ECD\_O\methods\PO082418.M  
 Quant Title : GC EXTRACTABLES  
 QLast Update : Fri Aug 24 08:17:51 2018  
 Response via : Initial Calibration  
 Integrator: ChemStation 6890 Scale Mode: Small noise peaks clipped

Volume Inj. : 2 µl  
 Signal #1 Phase : ZB-MR1 Signal #2 Phase: ZB-MR2  
 Signal #1 Info : 30Mx0.32mmx 0.50µ Signal #2 Info : 30M x 0.32mm x 0.25µm

Compound	RT#1	RT#2	Resp#1	Resp#2	ng/ml	ng/ml
-----						
System Monitoring Compounds						
1) SA Tetrachlo...	4.380	3.622	5868105	7070297	30.978	26.116m
2) SA Decachlor...	10.060	8.596	4363801	4226598	25.341	25.237m

Target Compounds

(f)=RT Delta > 1/2 Window (#)=Amounts differ by > 25% (m)=manual int.

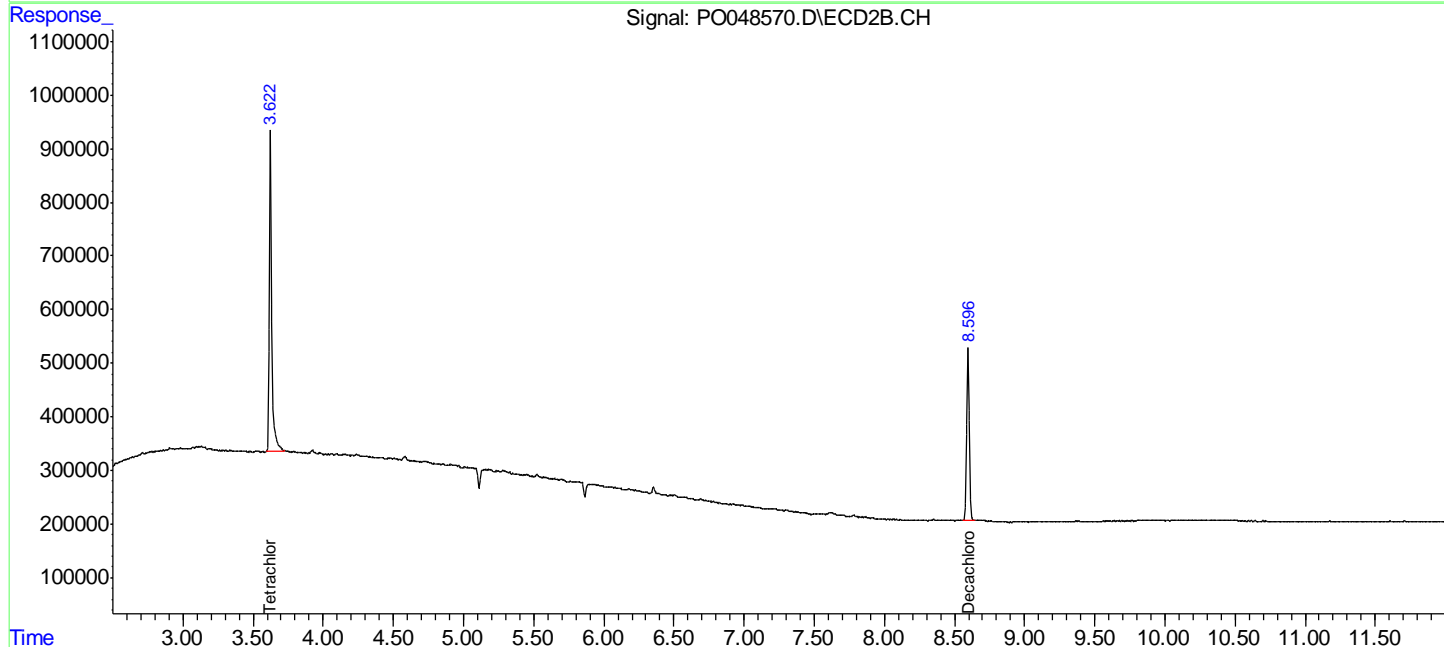
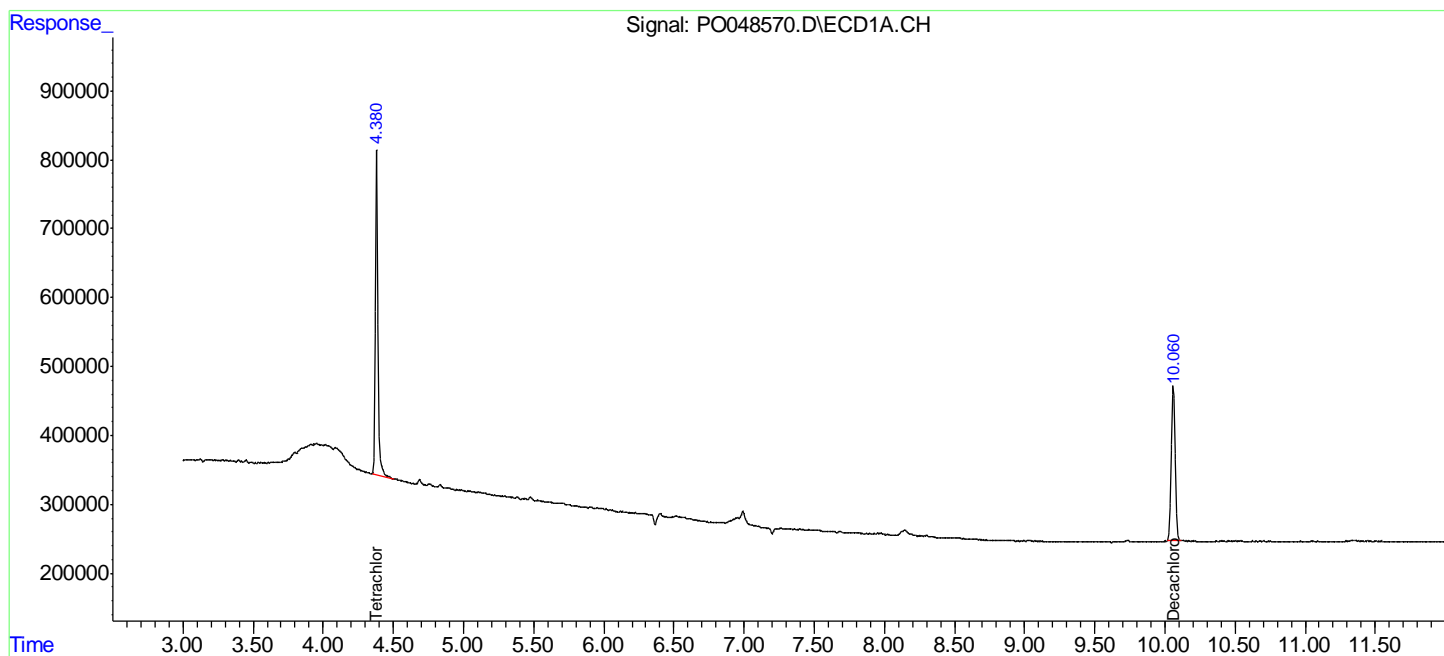
Data Path : Z:\pestpcbsrv\HPCHEM1\ECD O\Data\PO082718\  
 Data File : PO048570.D  
 Signal(s) : Signal #1: ECD1A.CH Signal #2: ECD2B.CH  
 Acq On : 28 Aug 2018 1:54  
 Operator : SM/SJ  
 Sample : I.BLK  
 Misc :  
 ALS Vial : 2 Sample Multiplier: 1

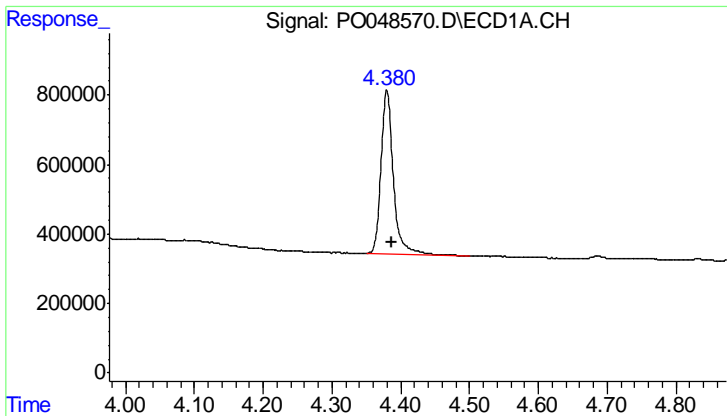
**Instrument :**  
 ECD\_O  
**ClientSampled :**  
 I.BLK

**Manual Integrations**  
**APPROVED**  
 Sohil  
 8/28/2018 2:32:02 PM

Integration File signal 1: autoint1.e  
 Integration File signal 2: autoint2.e  
 Quant Time: Aug 28 08:12:08 2018  
 Quant Method : Z:\pestpcbsrv\HPCHEM1\ECD\_O\methods\PO082418.M  
 Quant Title : GC EXTRACTABLES  
 QLast Update : Fri Aug 24 08:17:51 2018  
 Response via : Initial Calibration  
 Integrator: ChemStation 6890 Scale Mode: Small noise peaks clipped

Volume Inj. : 2 µl  
 Signal #1 Phase : ZB-MR1 Signal #2 Phase: ZB-MR2  
 Signal #1 Info : 30Mx0.32mmx 0.50µ Signal #2 Info : 30M x 0.32mm x 0.25µm



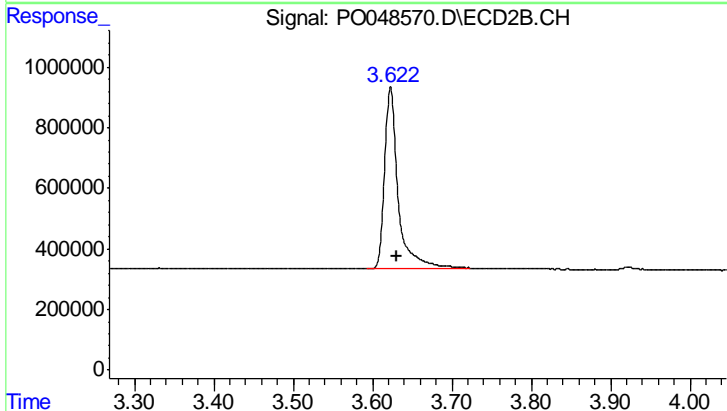


#1 Tetrachloro-m-xylene

R.T.: 4.380 min  
 Delta R.T.: -0.008 min  
 Response: 5868105  
 Conc: 30.98 ng/ml

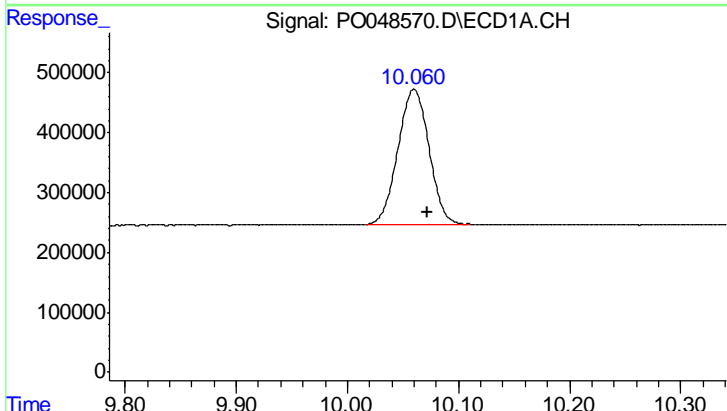
Instrument :  
 ECD\_O  
 ClientSampled :  
 I.BLK

Manual Integrations  
 APPROVED  
 Sohil  
 8/28/2018 2:32:02 PM



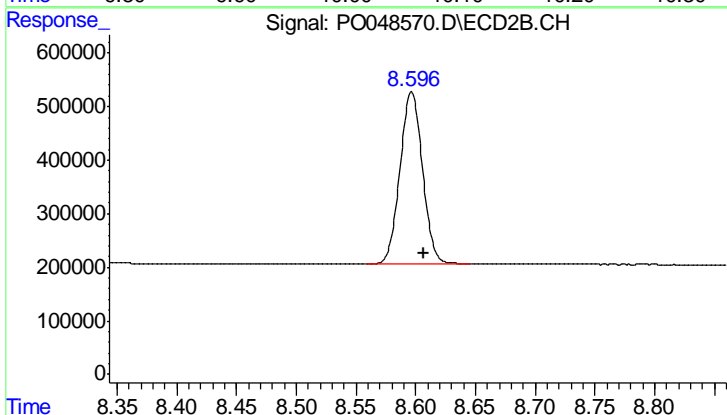
#1 Tetrachloro-m-xylene

R.T.: 3.622 min  
 Delta R.T.: -0.008 min  
 Response: 7070297  
 Conc: 26.12 ng/ml m



#2 Decachlorobiphenyl

R.T.: 10.060 min  
 Delta R.T.: -0.012 min  
 Response: 4363801  
 Conc: 25.34 ng/ml



#2 Decachlorobiphenyl

R.T.: 8.596 min  
 Delta R.T.: -0.010 min  
 Response: 4226598  
 Conc: 25.24 ng/ml m