

Data Path : Z:\pestpcbsrv\HPCHEM1\ECD_0\Data\P0082719\
 Data File : P0059883.D
 Signal(s) : Signal #1: ECD1A.CH Signal #2: ECD2B.CH
 Acq On : 27 Aug 2019 11:05
 Operator : SM/AJ
 Sample : PB122555BSD
 Misc :
 ALS Vial : 11 Sample Multiplier: 1

Instrument :
 ECD_0
 ClientSampleId :
 PB122555BSD

Integration File signal 1: autoint1.e
 Integration File signal 2: autoint2.e
 Quant Time: Aug 27 12:11:04 2019
 Quant Method : Z:\pestpcbsrv\HPCHEM1\ECD_0\methods\P0081719.M
 Quant Title : GC EXTRACTABLES
 QLast Update : Sat Aug 17 03:09:44 2019
 Response via : Initial Calibration
 Integrator: ChemStation 6890 Scale Mode: Small noise peaks clipped

Volume Inj. : 2 µl
 Signal #1 Phase : ZB-MR1 Signal #2 Phase: ZB-MR2
 Signal #1 Info : 30Mx0.32mmx 0.50µ Signal #2 Info : 30M x 0.32mm x 0.25µm

Compound	RT#1	RT#2	Resp#1	Resp#2	ng/ml	ng/ml

System Monitoring Compounds						
1) SA Tetrachlo...	4.124	3.496	1011727	883150	28.896	24.535
2) SA Decachlor...	9.589	8.353	1153472	912589	21.682	22.633
Target Compounds						
3) L1 AR-1016-1	5.273	4.546	473497	335788	295.221	248.375
4) L1 AR-1016-2	5.293	4.563	681646	502366	284.910	250.806
5) L1 AR-1016-3	5.354	4.735	423250	265725	284.151	245.619
6) L1 AR-1016-4	0.000	4.775	0	219586	N.D.	243.176 #
7) L1 AR-1016-5	5.779	4.983	-99546	279835	N.D.	242.927 #
8) L2 AR-1221-1	4.332	3.700	38886	30919	91.826	77.029
9) L2 AR-1221-2	4.461	3.785	810	44638	2.493	146.534 #
10) L2 AR-1221-3	4.496	3.858	224009	170087	212.964	173.834
11) L3 AR-1232-1	4.496	3.858	224009	170087	179.720	149.182
12) L3 AR-1232-2	5.049	4.591	4394	47713	6.221	37.464 #
13) L3 AR-1232-3	5.293	4.735	681646	265725	445.123	390.250
14) L3 AR-1232-4	5.538	4.845	-40801	88280	N.D.	144.707 #
15) L3 AR-1232-5	5.582	5.021	297444	103102	494.809	151.457 #
16) L4 AR-1242-1	5.293	4.563	681646	502366	536.933	488.369
17) L4 AR-1242-2	5.293	4.591	681646	47713	367.335	31.327 #
18) L4 AR-1242-3	5.354	4.735	423250	265725	362.111	318.042
19) L4 AR-1242-4	5.538	4.845	-40801	88280	N.D.	105.802 #
20) L4 AR-1242-5	6.175	5.366	50002	31915	39.791	28.531 #
21) L5 AR-1248-1	5.273	4.546	473497	335788	472.291	405.529
22) L5 AR-1248-2	5.538	4.775	-40801	219586	N.D.	190.427 #
23) L5 AR-1248-3	5.779	4.815	-99546	265588	N.D.	223.606 #
24) L5 AR-1248-4	6.138	4.983	58970	279835	28.849	192.580 #
25) L5 AR-1248-5	6.175	5.366	50002	31915	25.214	22.298
26) L6 AR-1254-1	6.108	5.325	285384	229279	136.782	96.668 #
27) L6 AR-1254-2	6.323	5.471	315256	224808	94.494	107.138
28) L6 AR-1254-3	6.690	5.877	159536	400790	44.959	119.194 #
29) L6 AR-1254-4	6.970	6.092	106681	34203	36.218	16.589 #
30) L6 AR-1254-5	7.387	6.500	1051372	748218	339.986	240.974 #
31) L7 AR-1260-1	6.847	5.991	721076	568972	267.479	249.669
32) L7 AR-1260-2	7.102	6.179	910641	715994	245.424	244.377
33) L7 AR-1260-3	7.457	6.327	667904	641726	203.857	242.240
34) L7 AR-1260-4	7.683	6.789	709902	469354	231.139	207.442
35) L7 AR-1260-5	7.990	7.033	1437042	1115450	202.946	202.687
36) L8 AR-1262-1	7.514	6.534	369236	583028	76.086	156.410 #
37) L8 AR-1262-2	8.034	7.033	196718	1115450	25.495	189.733 #
38) L8 AR-1262-3	8.291	7.305	1277416	237832	250.360	93.599 #
39) L8 AR-1262-4	8.336	7.371	657677	781474	170.616	176.846
40) L8 AR-1262-5	9.025	7.911	156546	14152	60.994	7.838 #
41) L9 AR-1268-1	8.291	7.305	1277416	237832	135.741	33.399 #
42) L9 AR-1268-2	8.336	7.371	657677	781474	83.433	121.196 #

Data Path : Z:\pestpcbsrv\HPCHEM1\ECD_0\Data\P0082719\
 Data File : P0059883.D
 Signal(s) : Signal #1: ECD1A.CH Signal #2: ECD2B.CH
 Acq On : 27 Aug 2019 11:05
 Operator : SM/AJ
 Sample : PB122555BSD
 Misc :
 ALS Vial : 11 Sample Multiplier: 1

Instrument :
 ECD_0
 ClientSampleId :
 PB122555BSD

Integration File signal 1: autoint1.e
 Integration File signal 2: autoint2.e
 Quant Time: Aug 27 12:11:04 2019
 Quant Method : Z:\pestpcbsrv\HPCHEM1\ECD_0\methods\P0081719.M
 Quant Title : GC EXTRACTABLES
 QLast Update : Sat Aug 17 03:09:44 2019
 Response via : Initial Calibration
 Integrator: ChemStation 6890 Scale Mode: Small noise peaks clipped

Volume Inj. : 2 µl
 Signal #1 Phase : ZB-MR1 Signal #2 Phase: ZB-MR2
 Signal #1 Info : 30Mx0.32mmx 0.50µ Signal #2 Info : 30M x 0.32mm x 0.25µm

	Compound	RT#1	RT#2	Resp#1	Resp#2	ng/ml	ng/ml
43)	L9 AR-1268-3	8.550	7.597	537045	1441	76.189	0.263 #
44)	L9 AR-1268-4	9.025	7.911	156546	14152	56.311	6.933 #
45)	L9 AR-1268-5	9.303	8.130	338464	33342	18.353	2.295 #

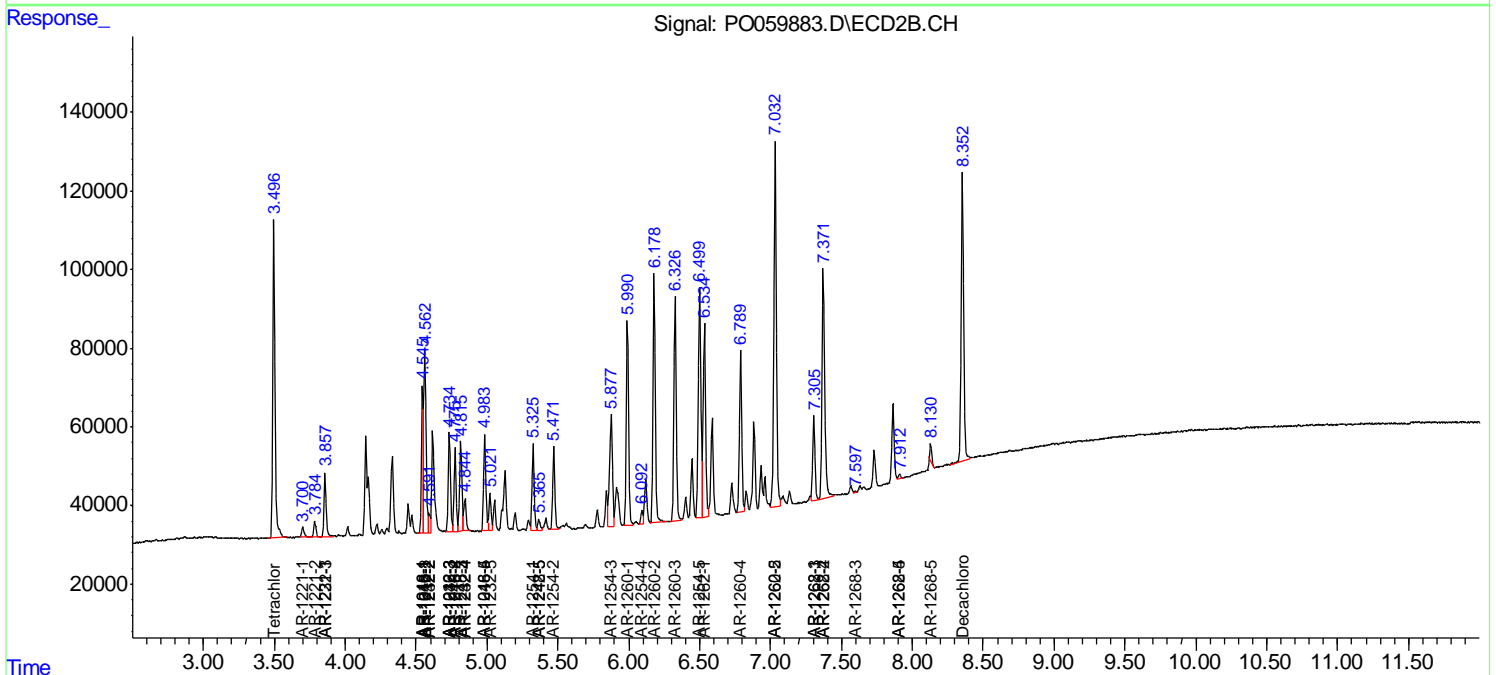
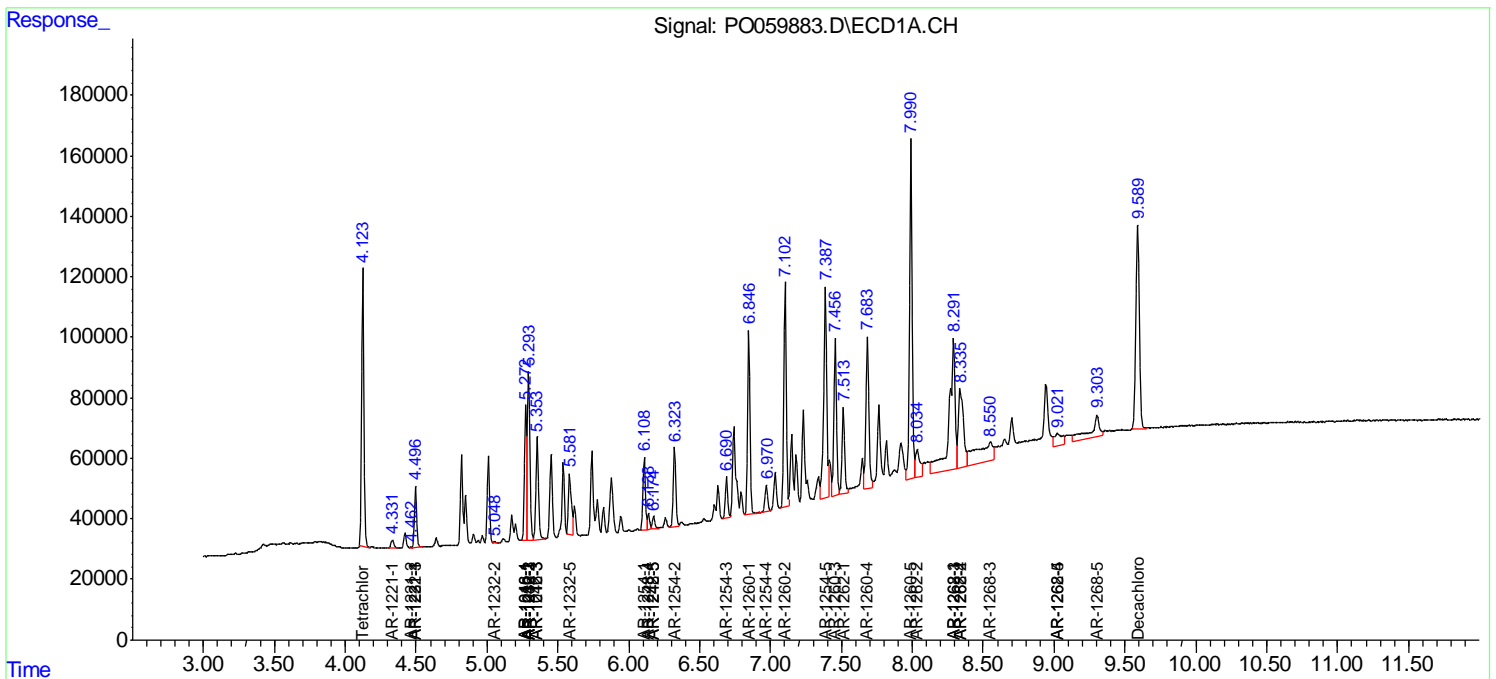
(f)=RT Delta > 1/2 Window (#)=Amounts differ by > 25% (m)=manual int.

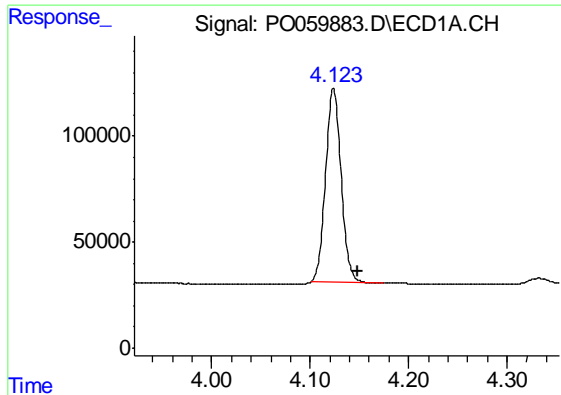
Data Path : Z:\pestpcbsrv\HPCHEM1\ECD_O\Data\PO082719\
Data File : PO059883.D
Signal(s) : Signal #1: ECD1A.CH Signal #2: ECD2B.CH
Acq On : 27 Aug 2019 11:05
Operator : SM/AJ
Sample : PB122555BSD
Misc :
ALS Vial : 11 Sample Multiplier: 1

Instrument :
ECD_O
Client Sampled :
PB122555BSD

Integration File signal 1: autoint1.e
Integration File signal 2: autoint2.e
Quant Time: Aug 27 12:11:04 2019
Quant Method : Z:\pestpcbsrv\HPCHEM1\ECD_O\methods\PO081719.M
Quant Title : GC EXTRACTABLES
QLast Update : Sat Aug 17 03:09:44 2019
Response via : Initial Calibration
Integrator: ChemStation 6890 Scale Mode: Small noise peaks clipped

Volume Inj. : 2 µl
Signal #1 Phase : ZB-MR1 Signal #2 Phase: ZB-MR2
Signal #1 Info : 30Mx0.32mmx 0.50µ Signal #2 Info : 30M x 0.32mm x 0.25µm

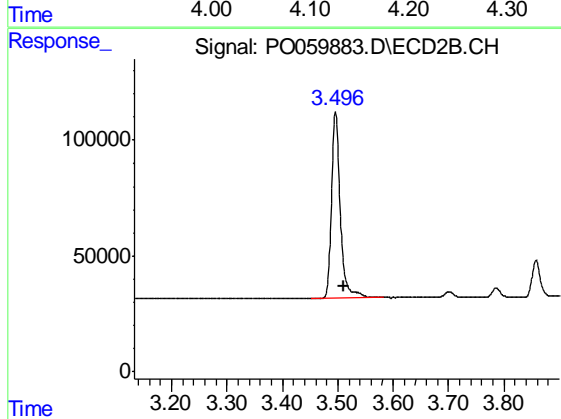




#1 Tetrachloro-m-xylene

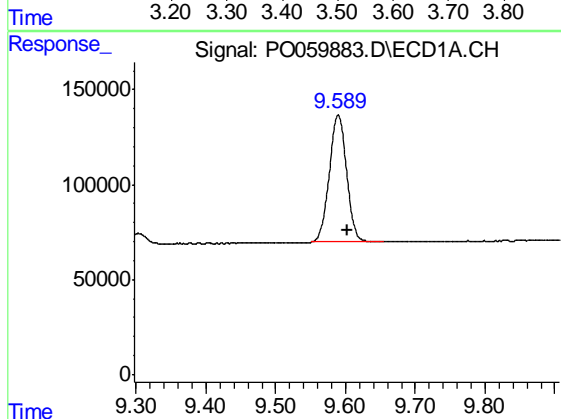
R.T.: 4.124 min
Delta R.T.: -0.025 min
Response: 1011727
Conc: 28.90 ng/ml

Instrument :
ECD_O
ClientSampleId :
PB122555BSD



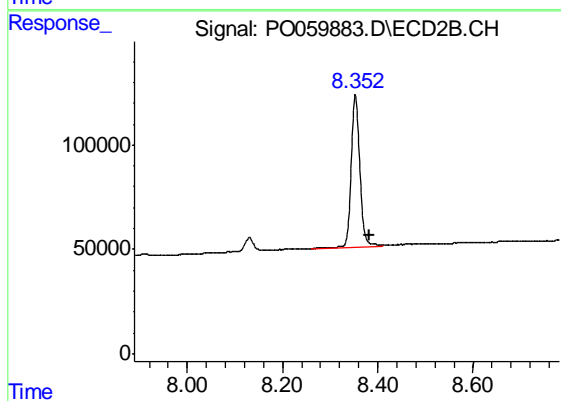
#1 Tetrachloro-m-xylene

R.T.: 3.496 min
Delta R.T.: -0.014 min
Response: 883150
Conc: 24.53 ng/ml



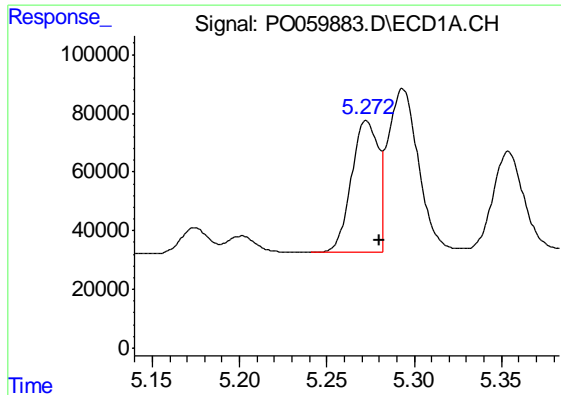
#2 Decachlorobiphenyl

R.T.: 9.589 min
Delta R.T.: -0.014 min
Response: 1153472
Conc: 21.68 ng/ml



#2 Decachlorobiphenyl

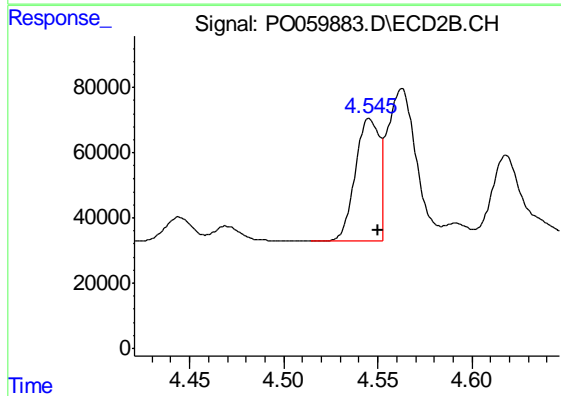
R.T.: 8.353 min
Delta R.T.: -0.030 min
Response: 912589
Conc: 22.63 ng/ml



#3 AR-1016-1

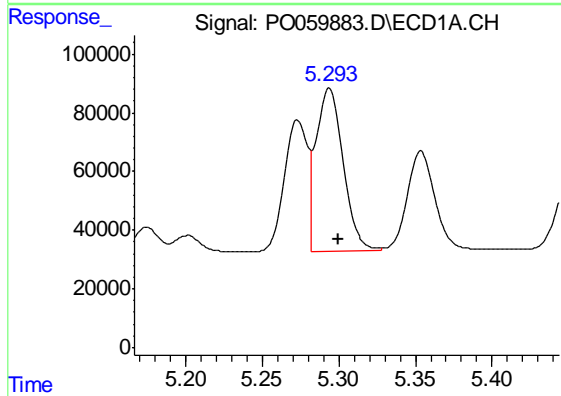
R.T.: 5.273 min
 Delta R.T.: -0.007 min
 Response: 473497
 Conc: 295.22 ng/ml

Instrument :
 ECD_O
 ClientSampleId :
 PB122555BSD



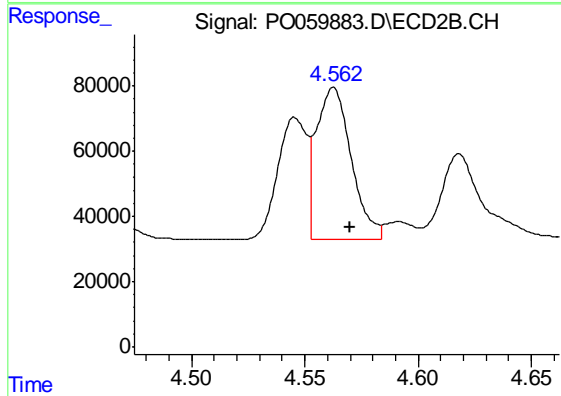
#3 AR-1016-1

R.T.: 4.546 min
 Delta R.T.: -0.004 min
 Response: 335788
 Conc: 248.37 ng/ml



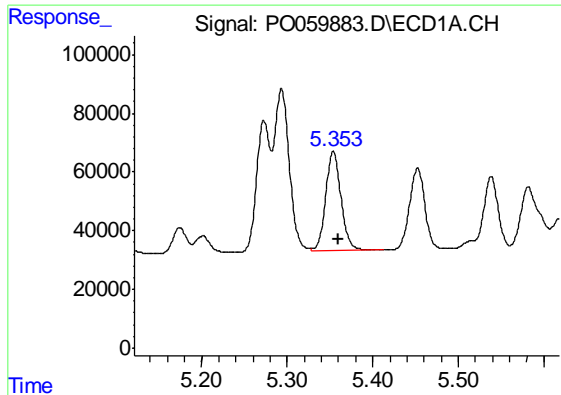
#4 AR-1016-2

R.T.: 5.293 min
 Delta R.T.: -0.007 min
 Response: 681646
 Conc: 284.91 ng/ml



#4 AR-1016-2

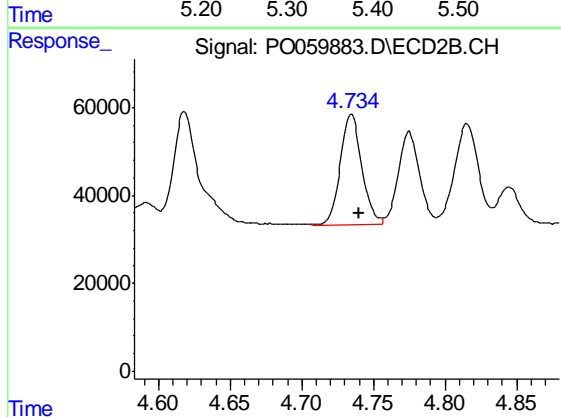
R.T.: 4.563 min
 Delta R.T.: -0.007 min
 Response: 502366
 Conc: 250.81 ng/ml



#5 AR-1016-3

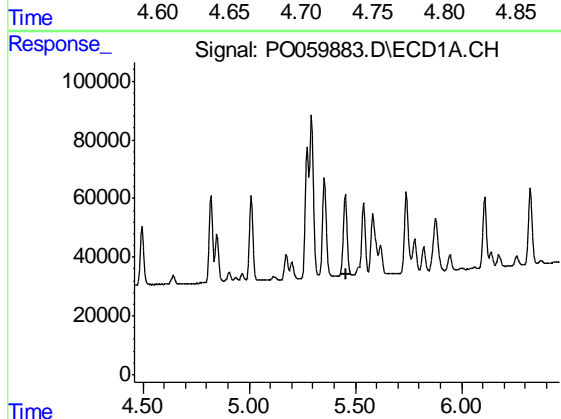
R.T.: 5.354 min
 Delta R.T.: -0.006 min
 Response: 423250
 Conc: 284.15 ng/ml

Instrument :
 ECD_O
 ClientSampleId :
 PB122555BSD



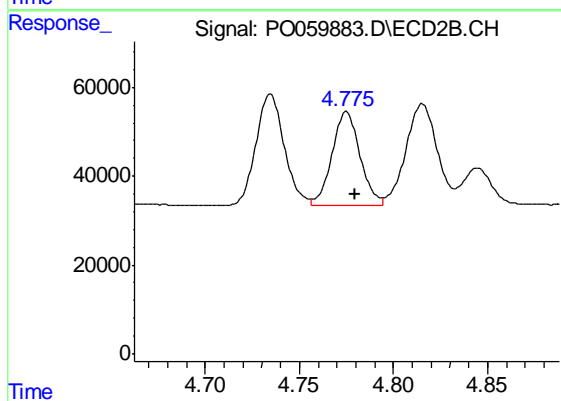
#5 AR-1016-3

R.T.: 4.735 min
 Delta R.T.: -0.005 min
 Response: 265725
 Conc: 245.62 ng/ml



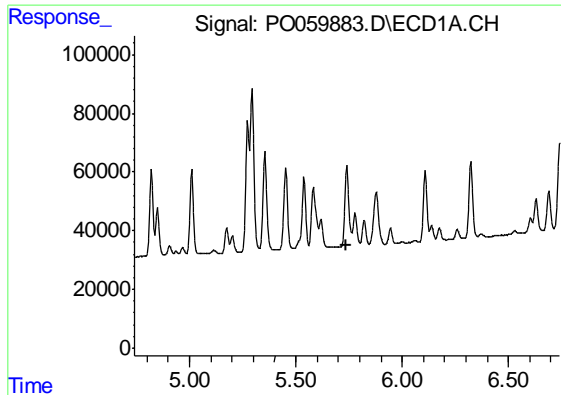
#6 AR-1016-4

R.T.: 0.000 min
 Exp R.T. : 5.460 min
 Response: 0
 Conc: N.D.



#6 AR-1016-4

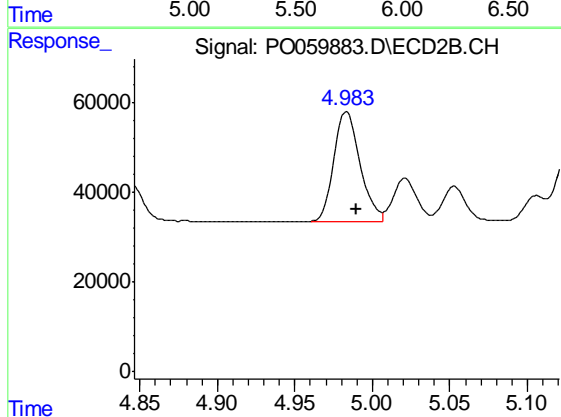
R.T.: 4.775 min
 Delta R.T.: -0.005 min
 Response: 219586
 Conc: 243.18 ng/ml



#7 AR-1016-5

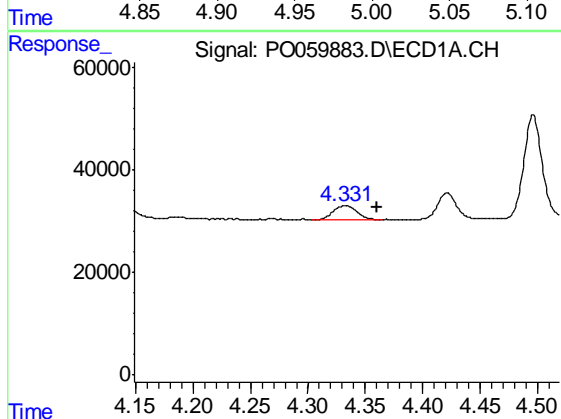
R.T.: 5.779 min
 Delta R.T.: 0.039 min
 Response: -99546
 Conc: N.D.

Instrument :
 ECD_O
 ClientSampleId :
 PB122555BSD



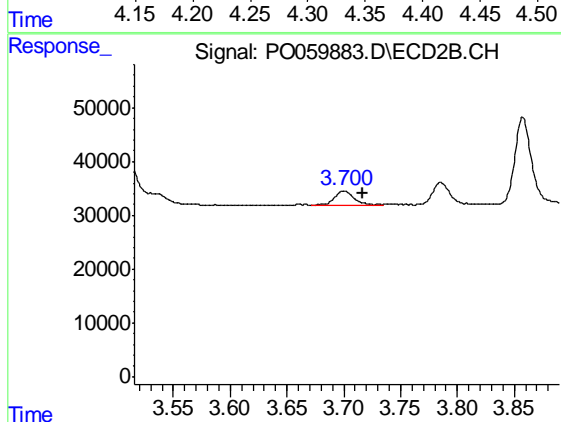
#7 AR-1016-5

R.T.: 4.983 min
 Delta R.T.: -0.007 min
 Response: 279835
 Conc: 242.93 ng/ml



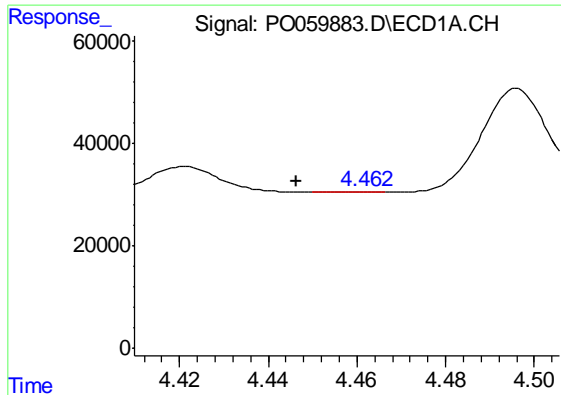
#8 AR-1221-1

R.T.: 4.332 min
 Delta R.T.: -0.028 min
 Response: 38886
 Conc: 91.83 ng/ml



#8 AR-1221-1

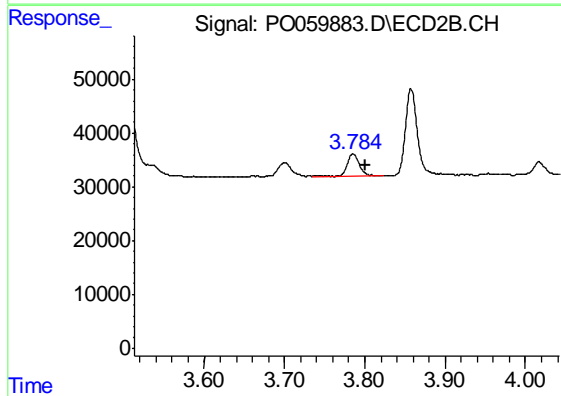
R.T.: 3.700 min
 Delta R.T.: -0.016 min
 Response: 30919
 Conc: 77.03 ng/ml



#9 AR-1221-2

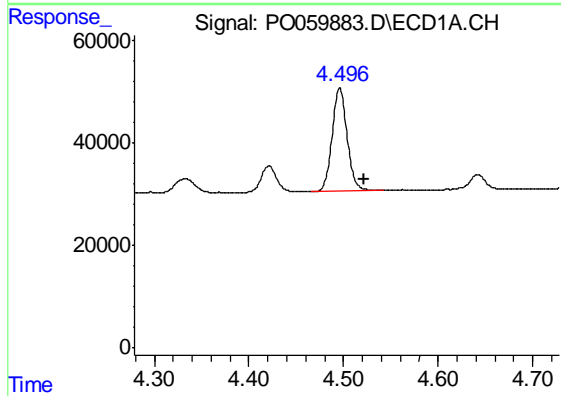
R.T.: 4.461 min
 Delta R.T.: 0.015 min
 Response: 810
 Conc: 2.49 ng/ml

Instrument :
 ECD_O
 ClientSampleId :
 PB122555BSD



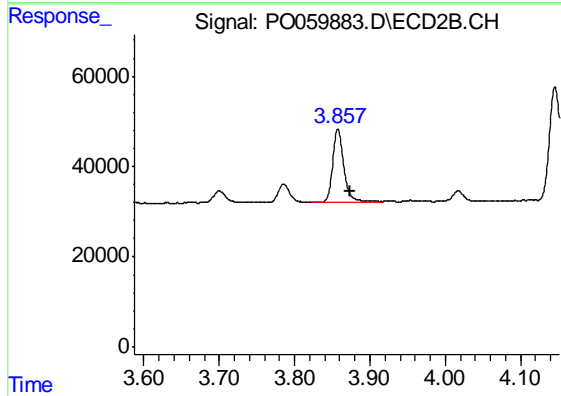
#9 AR-1221-2

R.T.: 3.785 min
 Delta R.T.: -0.016 min
 Response: 44638
 Conc: 146.53 ng/ml



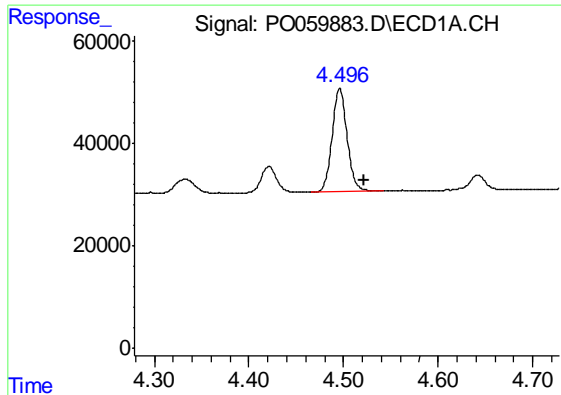
#10 AR-1221-3

R.T.: 4.496 min
 Delta R.T.: -0.026 min
 Response: 224009
 Conc: 212.96 ng/ml



#10 AR-1221-3

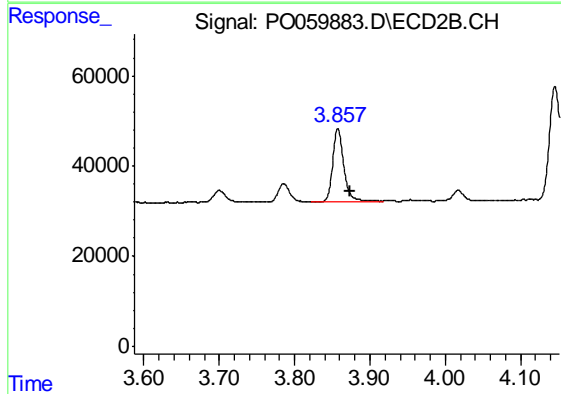
R.T.: 3.858 min
 Delta R.T.: -0.017 min
 Response: 170087
 Conc: 173.83 ng/ml



#11 AR-1232-1

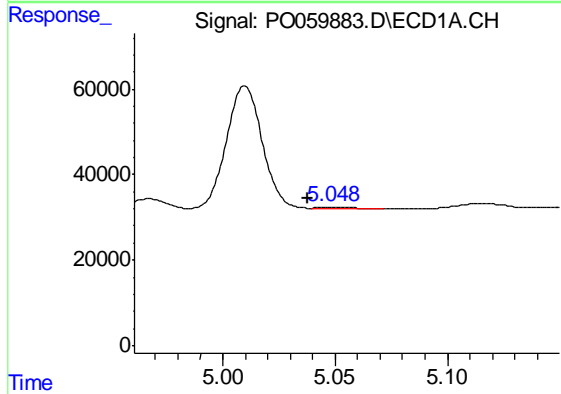
R.T.: 4.496 min
 Delta R.T.: -0.025 min
 Response: 224009
 Conc: 179.72 ng/ml

Instrument :
 ECD_O
 ClientSampleId :
 PB122555BSD



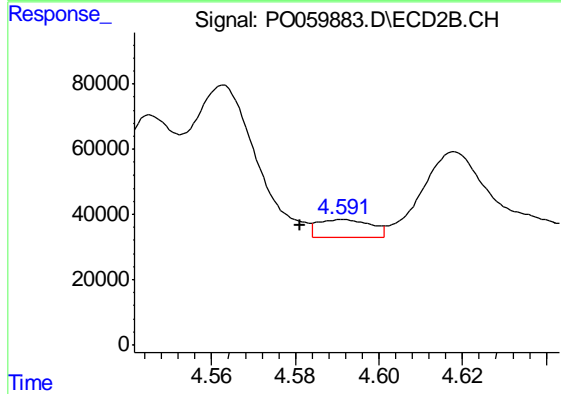
#11 AR-1232-1

R.T.: 3.858 min
 Delta R.T.: -0.016 min
 Response: 170087
 Conc: 149.18 ng/ml



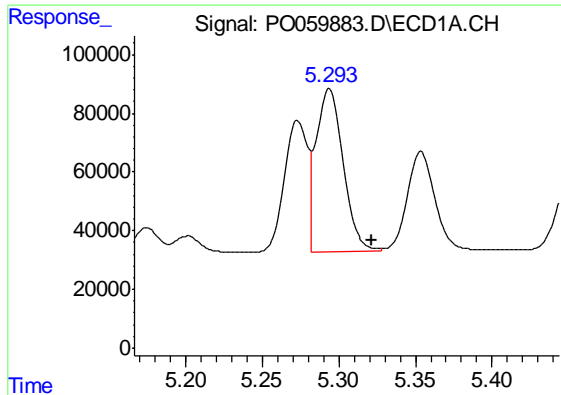
#12 AR-1232-2

R.T.: 5.049 min
 Delta R.T.: 0.011 min
 Response: 4394
 Conc: 6.22 ng/ml



#12 AR-1232-2

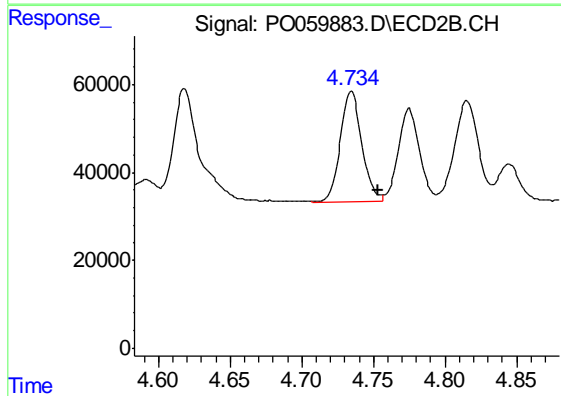
R.T.: 4.591 min
 Delta R.T.: 0.010 min
 Response: 47713
 Conc: 37.46 ng/ml



#13 AR-1232-3

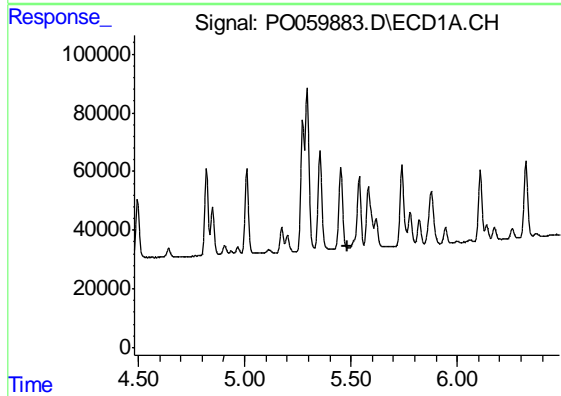
R.T.: 5.293 min
 Delta R.T.: -0.028 min
 Response: 681646
 Conc: 445.12 ng/ml

Instrument :
 ECD_O
 ClientSampleId :
 PB122555BSD



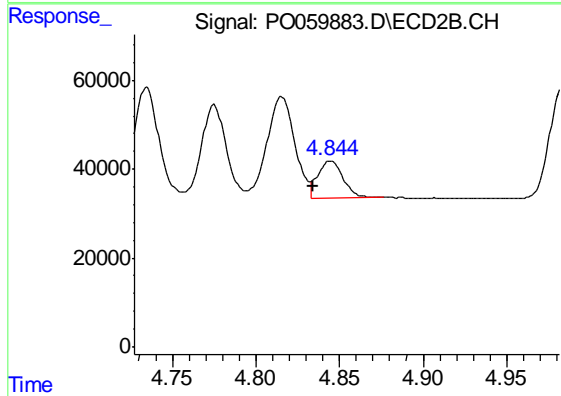
#13 AR-1232-3

R.T.: 4.735 min
 Delta R.T.: -0.019 min
 Response: 265725
 Conc: 390.25 ng/ml



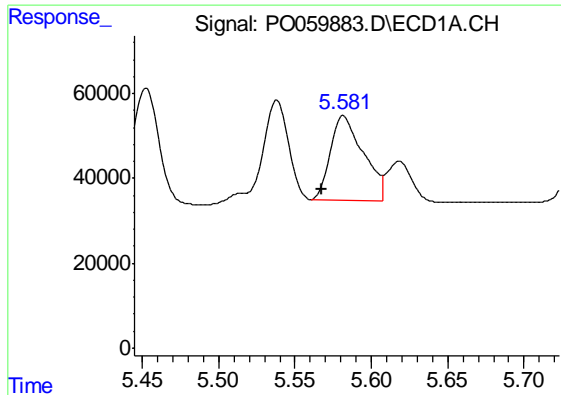
#14 AR-1232-4

R.T.: 5.538 min
 Delta R.T.: 0.057 min
 Response: -40801
 Conc: N.D.



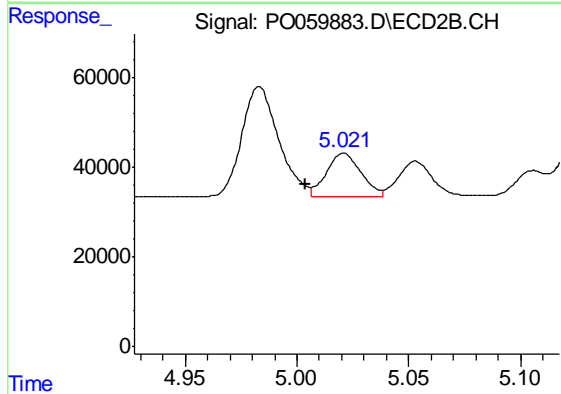
#14 AR-1232-4

R.T.: 4.845 min
 Delta R.T.: 0.010 min
 Response: 88280
 Conc: 144.71 ng/ml

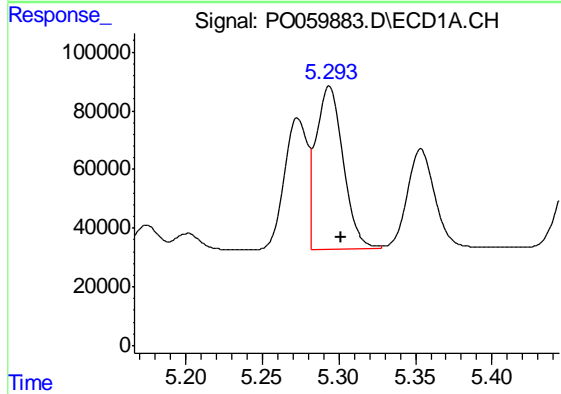


#15 AR-1232-5
 R.T.: 5.582 min
 Delta R.T.: 0.014 min
 Response: 297444
 Conc: 494.81 ng/ml

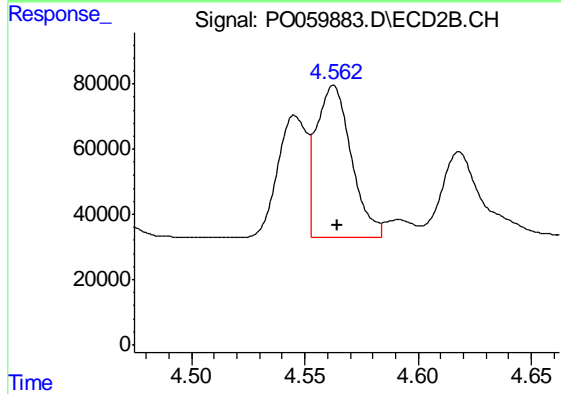
Instrument :
 ECD_O
 ClientSampleId :
 PB122555BSD



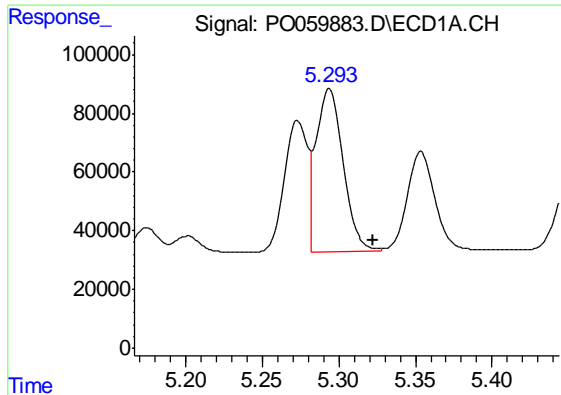
#15 AR-1232-5
 R.T.: 5.021 min
 Delta R.T.: 0.017 min
 Response: 103102
 Conc: 151.46 ng/ml



#16 AR-1242-1
 R.T.: 5.293 min
 Delta R.T.: -0.008 min
 Response: 681646
 Conc: 536.93 ng/ml



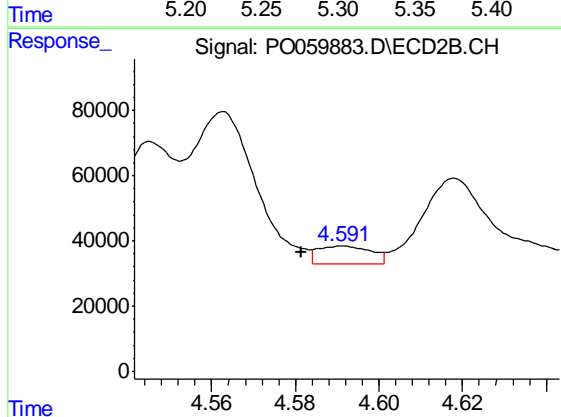
#16 AR-1242-1
 R.T.: 4.563 min
 Delta R.T.: -0.002 min
 Response: 502366
 Conc: 488.37 ng/ml



#17 AR-1242-2

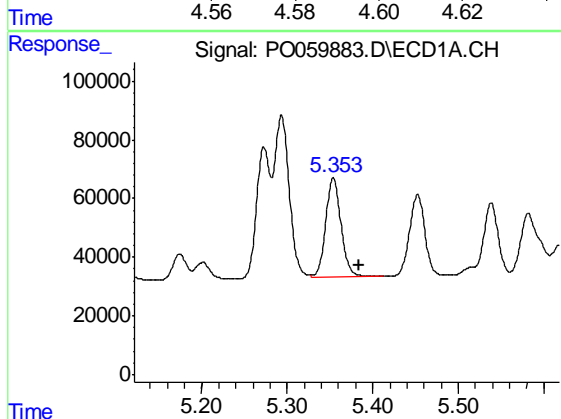
R.T.: 5.293 min
 Delta R.T.: -0.029 min
 Response: 681646
 Conc: 367.33 ng/ml

Instrument :
 ECD_O
 ClientSampleId :
 PB122555BSD



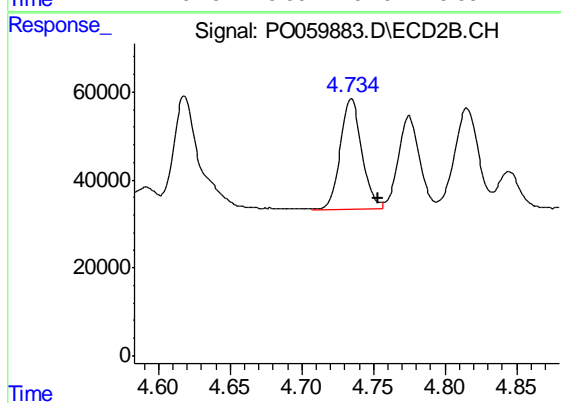
#17 AR-1242-2

R.T.: 4.591 min
 Delta R.T.: 0.010 min
 Response: 47713
 Conc: 31.33 ng/ml



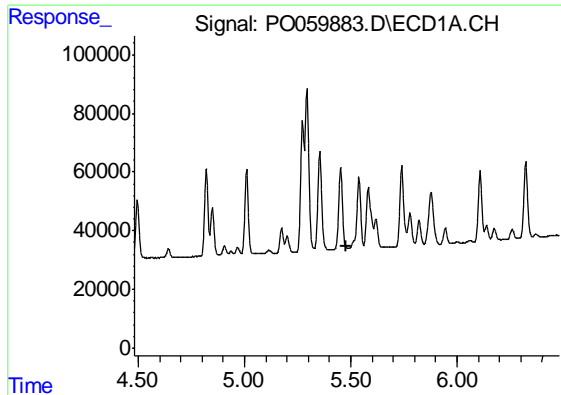
#18 AR-1242-3

R.T.: 5.354 min
 Delta R.T.: -0.030 min
 Response: 423250
 Conc: 362.11 ng/ml



#18 AR-1242-3

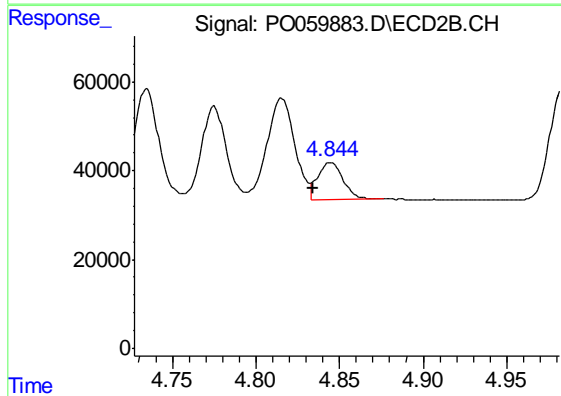
R.T.: 4.735 min
 Delta R.T.: -0.019 min
 Response: 265725
 Conc: 318.04 ng/ml



#19 AR-1242-4

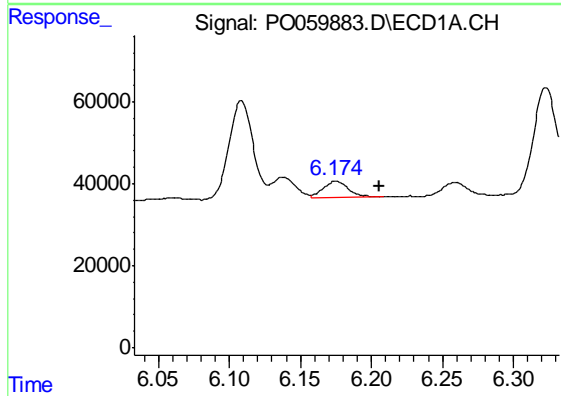
R.T.: 5.538 min
 Delta R.T.: 0.057 min
 Response: -40801
 Conc: N.D.

Instrument :
 ECD_O
 ClientSampleId :
 PB122555BSD



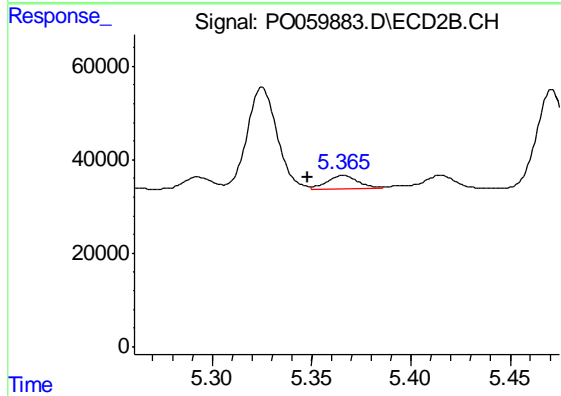
#19 AR-1242-4

R.T.: 4.845 min
 Delta R.T.: 0.010 min
 Response: 88280
 Conc: 105.80 ng/ml



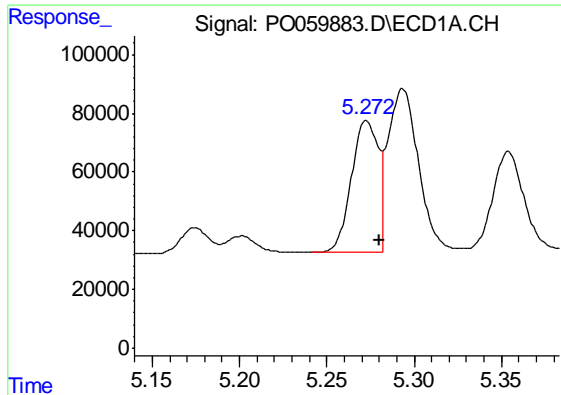
#20 AR-1242-5

R.T.: 6.175 min
 Delta R.T.: -0.031 min
 Response: 50002
 Conc: 39.79 ng/ml



#20 AR-1242-5

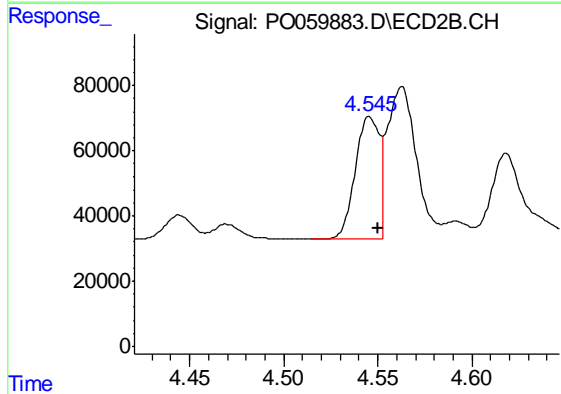
R.T.: 5.366 min
 Delta R.T.: 0.018 min
 Response: 31915
 Conc: 28.53 ng/ml



#21 AR-1248-1

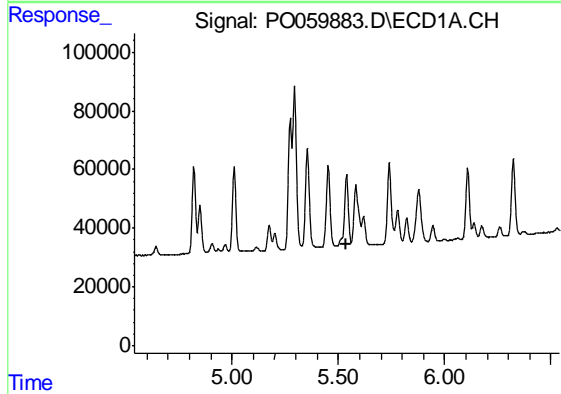
R.T.: 5.273 min
 Delta R.T.: -0.007 min
 Response: 473497
 Conc: 472.29 ng/ml

Instrument :
 ECD_O
 ClientSampleId :
 PB122555BSD



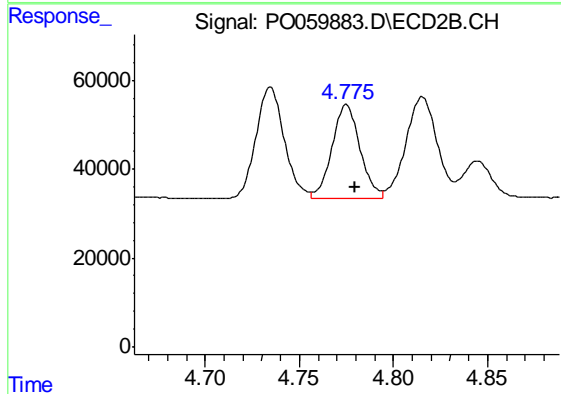
#21 AR-1248-1

R.T.: 4.546 min
 Delta R.T.: -0.004 min
 Response: 335788
 Conc: 405.53 ng/ml



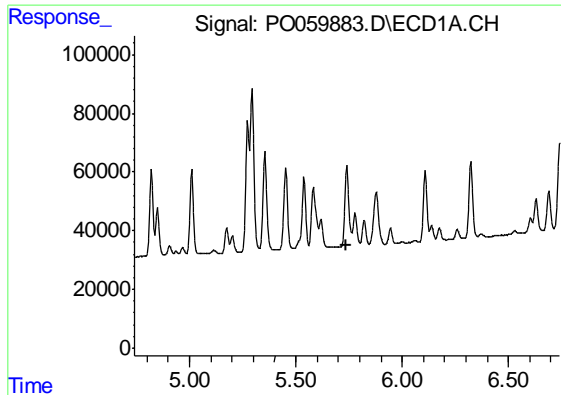
#22 AR-1248-2

R.T.: 5.538 min
 Delta R.T.: -0.002 min
 Response: -40801
 Conc: N.D.



#22 AR-1248-2

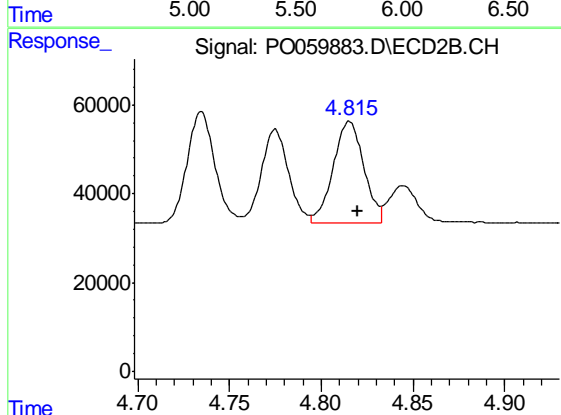
R.T.: 4.775 min
 Delta R.T.: -0.005 min
 Response: 219586
 Conc: 190.43 ng/ml



#23 AR-1248-3

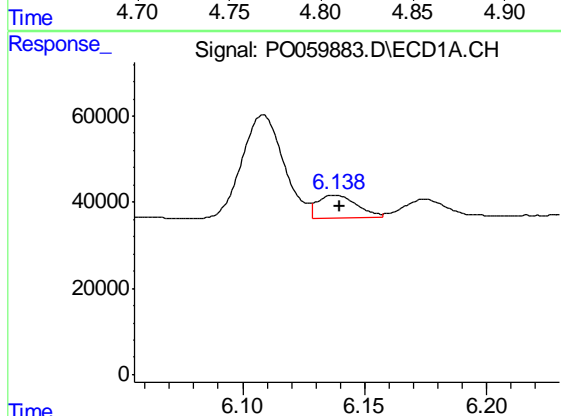
R.T.: 5.779 min
 Delta R.T.: 0.039 min
 Response: -99546
 Conc: N.D.

Instrument :
 ECD_O
 ClientSampleId :
 PB122555BSD



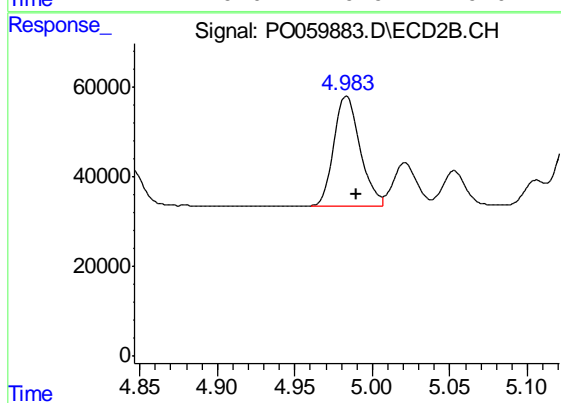
#23 AR-1248-3

R.T.: 4.815 min
 Delta R.T.: -0.005 min
 Response: 265588
 Conc: 223.61 ng/ml



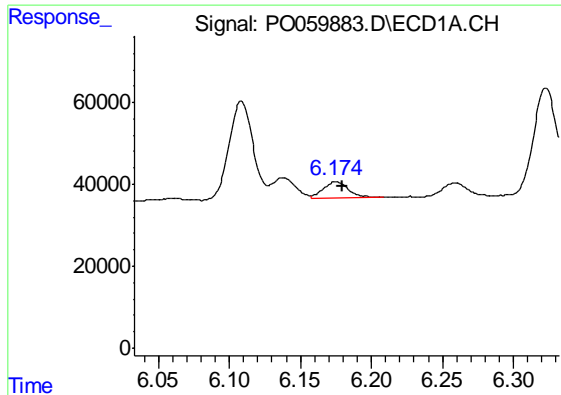
#24 AR-1248-4

R.T.: 6.138 min
 Delta R.T.: -0.002 min
 Response: 58970
 Conc: 28.85 ng/ml



#24 AR-1248-4

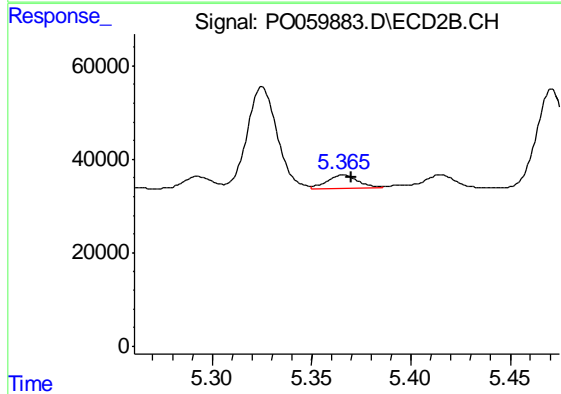
R.T.: 4.983 min
 Delta R.T.: -0.007 min
 Response: 279835
 Conc: 192.58 ng/ml



#25 AR-1248-5

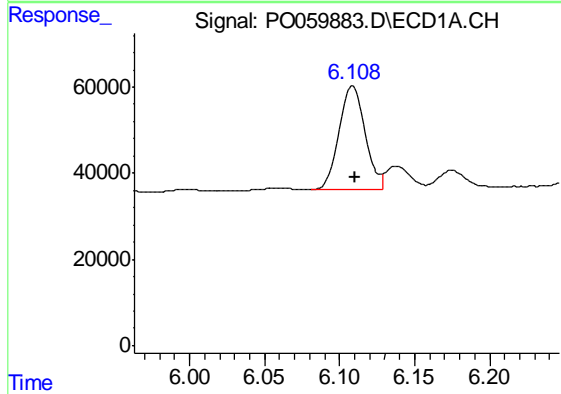
R.T.: 6.175 min
 Delta R.T.: -0.005 min
 Response: 50002
 Conc: 25.21 ng/ml

Instrument :
 ECD_O
 ClientSampleId :
 PB122555BSD



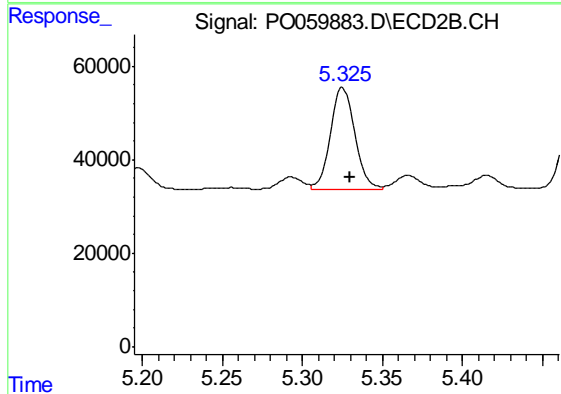
#25 AR-1248-5

R.T.: 5.366 min
 Delta R.T.: -0.004 min
 Response: 31915
 Conc: 22.30 ng/ml



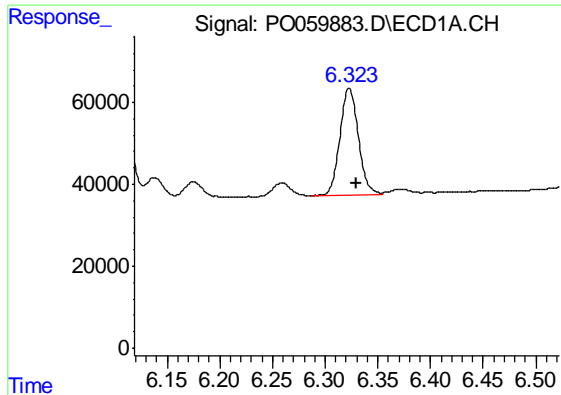
#26 AR-1254-1

R.T.: 6.108 min
 Delta R.T.: -0.002 min
 Response: 285384
 Conc: 136.78 ng/ml



#26 AR-1254-1

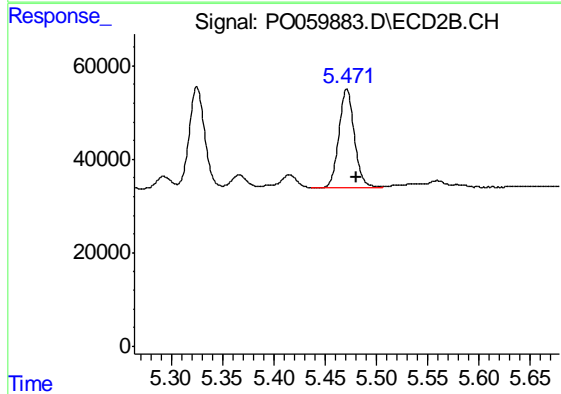
R.T.: 5.325 min
 Delta R.T.: -0.005 min
 Response: 229279
 Conc: 96.67 ng/ml



#27 AR-1254-2

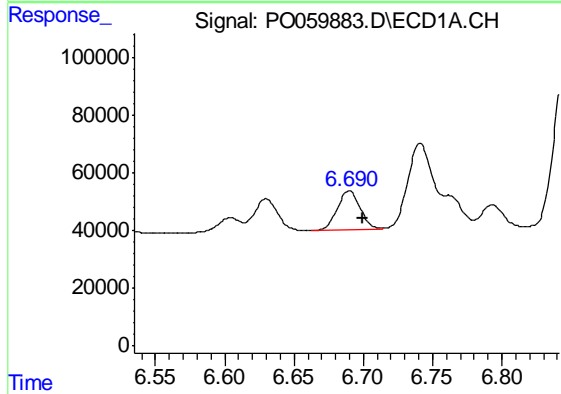
R.T.: 6.323 min
 Delta R.T.: -0.007 min
 Response: 315256
 Conc: 94.49 ng/ml

Instrument :
 ECD_O
 ClientSampleId :
 PB122555BSD



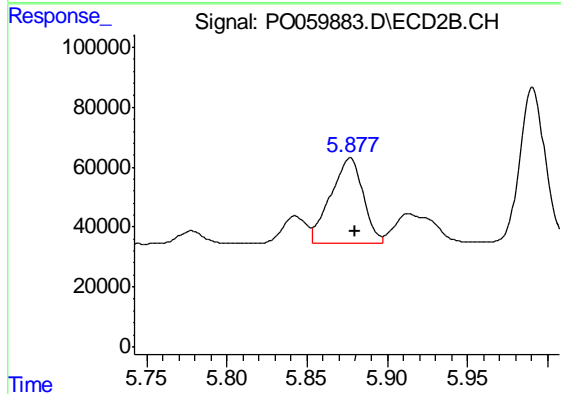
#27 AR-1254-2

R.T.: 5.471 min
 Delta R.T.: -0.009 min
 Response: 224808
 Conc: 107.14 ng/ml



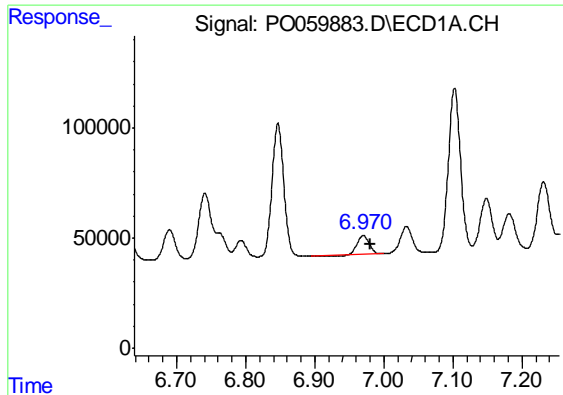
#28 AR-1254-3

R.T.: 6.690 min
 Delta R.T.: -0.010 min
 Response: 159536
 Conc: 44.96 ng/ml



#28 AR-1254-3

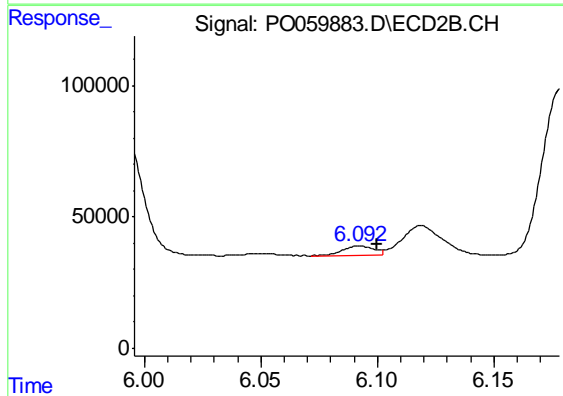
R.T.: 5.877 min
 Delta R.T.: -0.003 min
 Response: 400790
 Conc: 119.19 ng/ml



#29 AR-1254-4

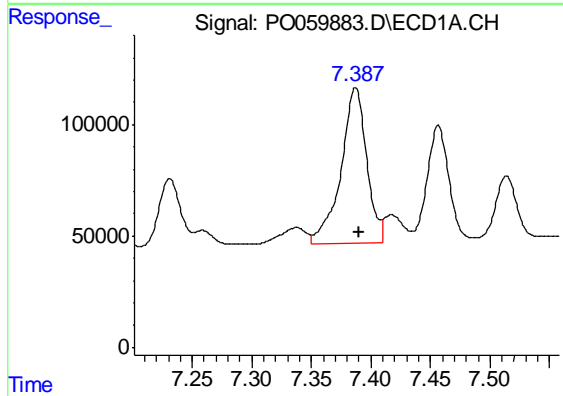
R.T.: 6.970 min
 Delta R.T.: -0.010 min
 Response: 106681
 Conc: 36.22 ng/ml

Instrument :
 ECD_O
 ClientSampleId :
 PB122555BSD



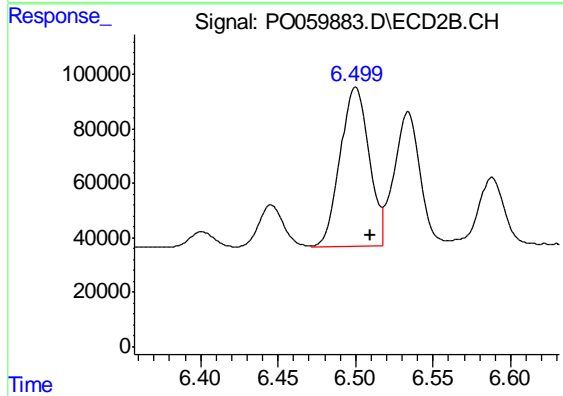
#29 AR-1254-4

R.T.: 6.092 min
 Delta R.T.: -0.008 min
 Response: 34203
 Conc: 16.59 ng/ml



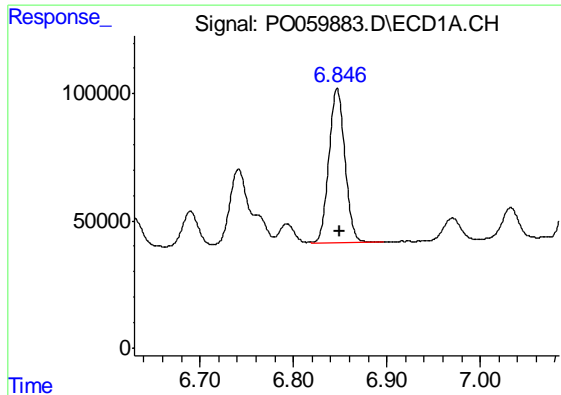
#30 AR-1254-5

R.T.: 7.387 min
 Delta R.T.: -0.003 min
 Response: 1051372
 Conc: 339.99 ng/ml



#30 AR-1254-5

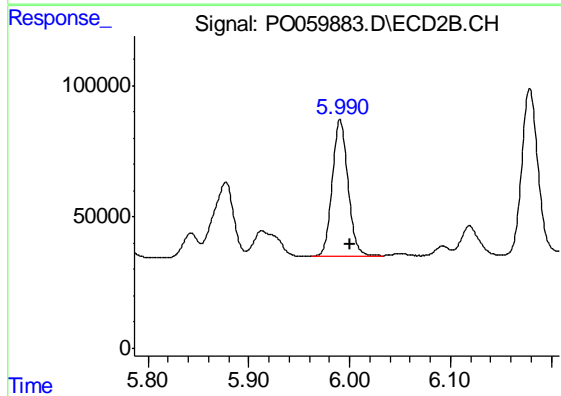
R.T.: 6.500 min
 Delta R.T.: -0.010 min
 Response: 748218
 Conc: 240.97 ng/ml



#31 AR-1260-1

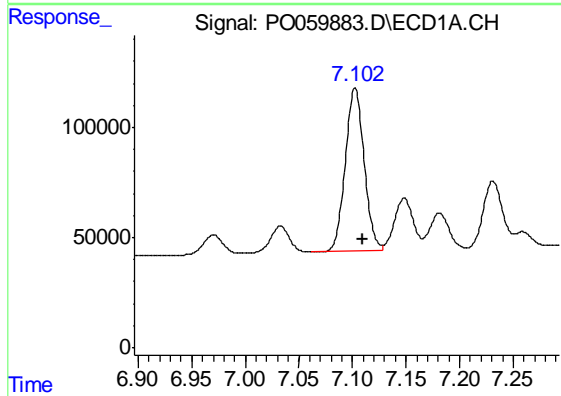
R.T.: 6.847 min
 Delta R.T.: -0.003 min
 Response: 721076
 Conc: 267.48 ng/ml

Instrument :
 ECD_O
 ClientSampleId :
 PB122555BSD



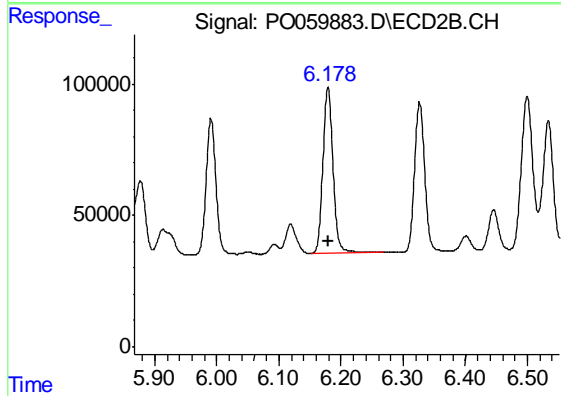
#31 AR-1260-1

R.T.: 5.991 min
 Delta R.T.: -0.009 min
 Response: 568972
 Conc: 249.67 ng/ml



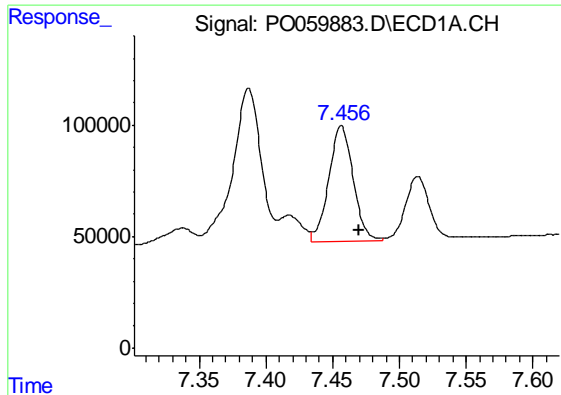
#32 AR-1260-2

R.T.: 7.102 min
 Delta R.T.: -0.008 min
 Response: 910641
 Conc: 245.42 ng/ml



#32 AR-1260-2

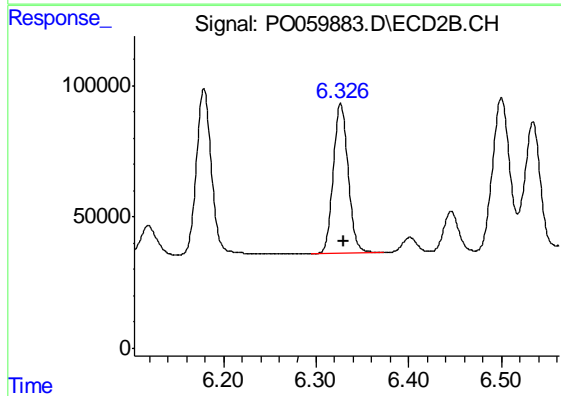
R.T.: 6.179 min
 Delta R.T.: -0.001 min
 Response: 715994
 Conc: 244.38 ng/ml



#33 AR-1260-3

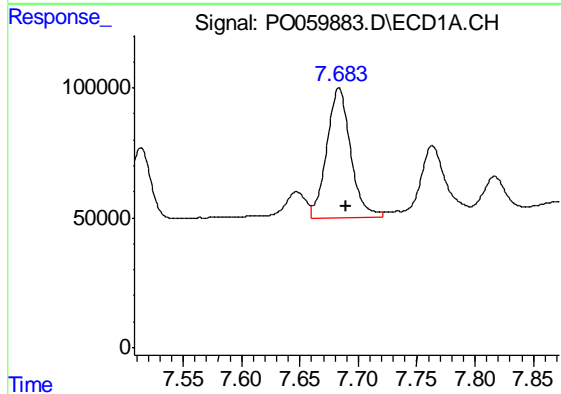
R.T.: 7.457 min
Delta R.T.: -0.013 min
Response: 667904
Conc: 203.86 ng/ml

Instrument :
ECD_O
ClientSampleId :
PB122555BSD



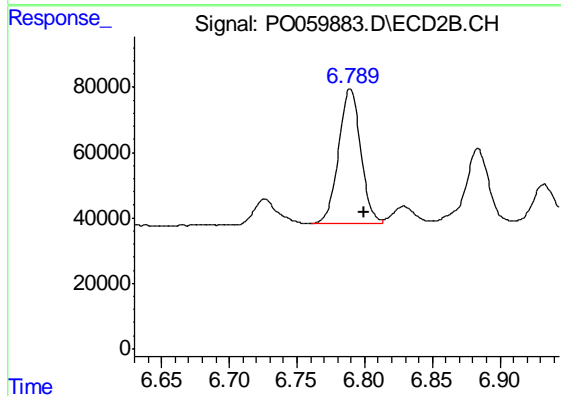
#33 AR-1260-3

R.T.: 6.327 min
Delta R.T.: -0.003 min
Response: 641726
Conc: 242.24 ng/ml



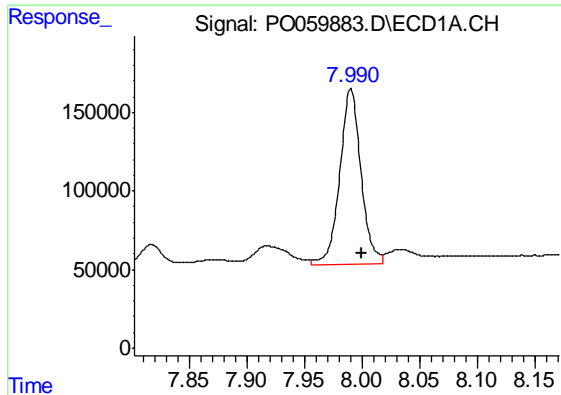
#34 AR-1260-4

R.T.: 7.683 min
Delta R.T.: -0.007 min
Response: 709902
Conc: 231.14 ng/ml



#34 AR-1260-4

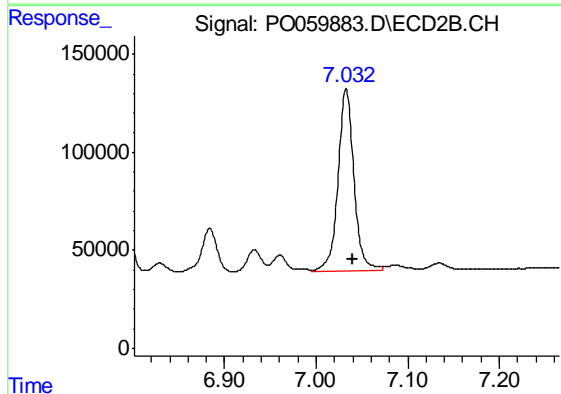
R.T.: 6.789 min
Delta R.T.: -0.011 min
Response: 469354
Conc: 207.44 ng/ml



#35 AR-1260-5

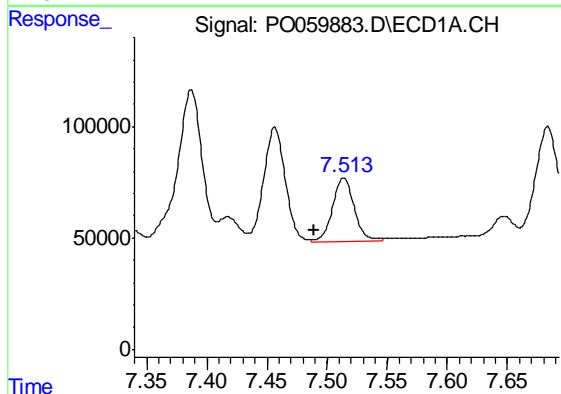
R.T.: 7.990 min
 Delta R.T.: -0.010 min
 Response: 1437042
 Conc: 202.95 ng/ml

Instrument :
 ECD_O
 ClientSampleId :
 PB122555BSD



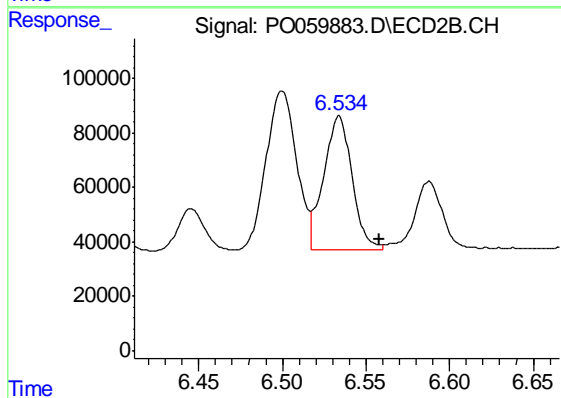
#35 AR-1260-5

R.T.: 7.033 min
 Delta R.T.: -0.007 min
 Response: 1115450
 Conc: 202.69 ng/ml



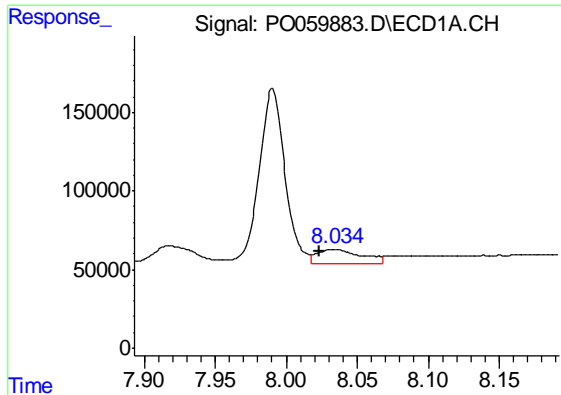
#36 AR-1262-1

R.T.: 7.514 min
 Delta R.T.: 0.025 min
 Response: 369236
 Conc: 76.09 ng/ml



#36 AR-1262-1

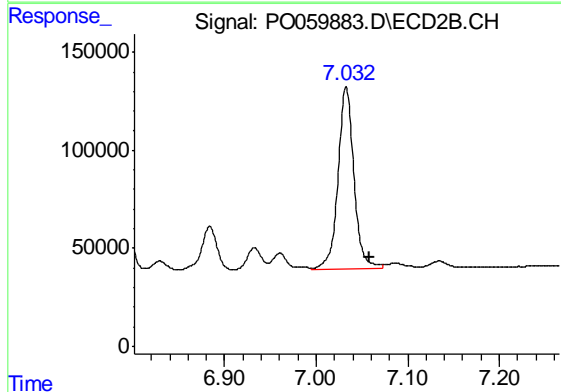
R.T.: 6.534 min
 Delta R.T.: -0.024 min
 Response: 583028
 Conc: 156.41 ng/ml



#37 AR-1262-2

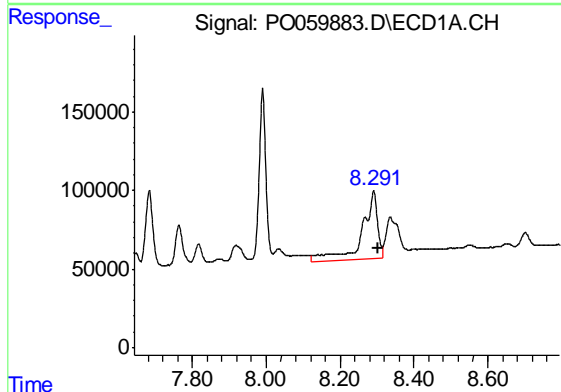
R.T.: 8.034 min
 Delta R.T.: 0.011 min
 Response: 196718
 Conc: 25.50 ng/ml

Instrument :
 ECD_O
 ClientSampled :
 PB122555BSD



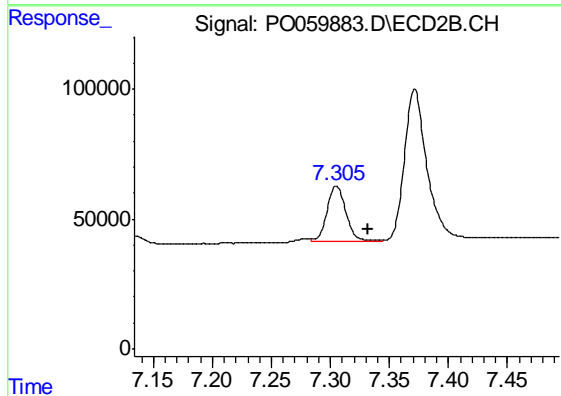
#37 AR-1262-2

R.T.: 7.033 min
 Delta R.T.: -0.025 min
 Response: 1115450
 Conc: 189.73 ng/ml



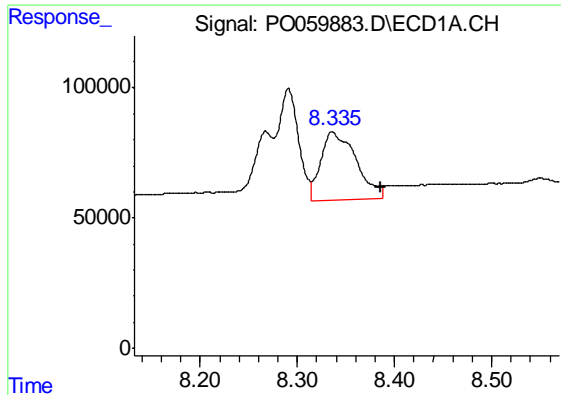
#38 AR-1262-3

R.T.: 8.291 min
 Delta R.T.: -0.012 min
 Response: 1277416
 Conc: 250.36 ng/ml



#38 AR-1262-3

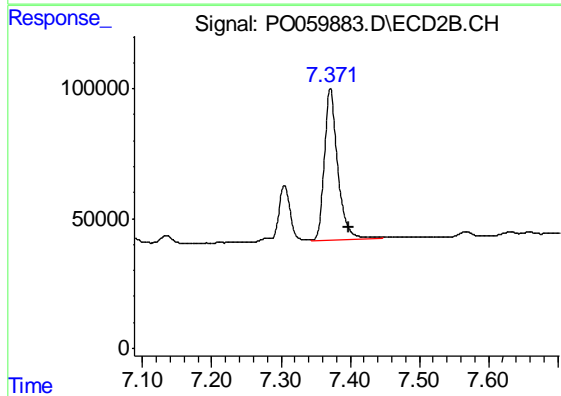
R.T.: 7.305 min
 Delta R.T.: -0.027 min
 Response: 237832
 Conc: 93.60 ng/ml



#39 AR-1262-4

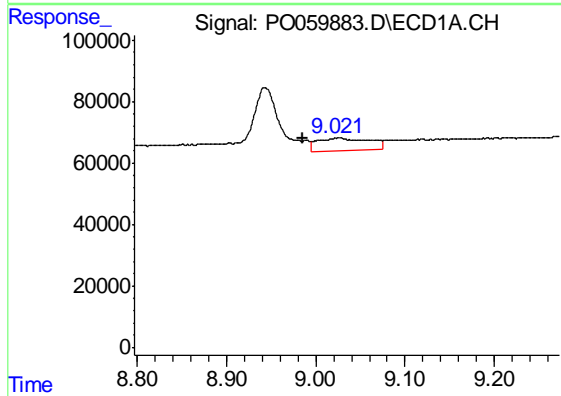
R.T.: 8.336 min
 Delta R.T.: -0.050 min
 Response: 657677
 Conc: 170.62 ng/ml

Instrument :
 ECD_O
 ClientSampleId :
 PB122555BSD



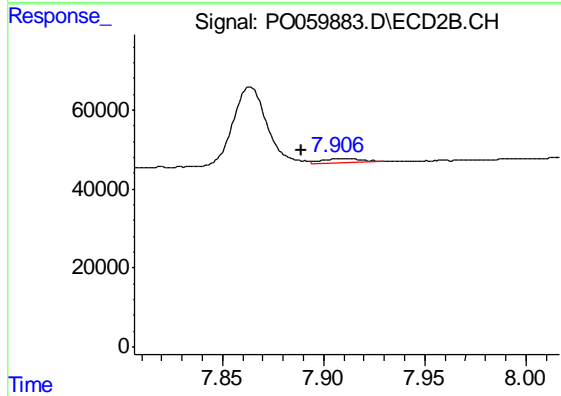
#39 AR-1262-4

R.T.: 7.371 min
 Delta R.T.: -0.026 min
 Response: 781474
 Conc: 176.85 ng/ml



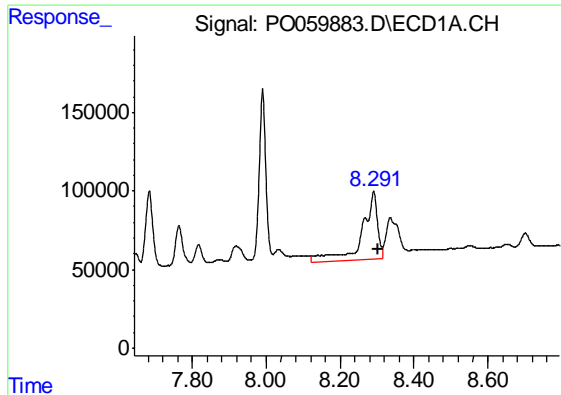
#40 AR-1262-5

R.T.: 9.025 min
 Delta R.T.: 0.039 min
 Response: 156546
 Conc: 60.99 ng/ml



#40 AR-1262-5

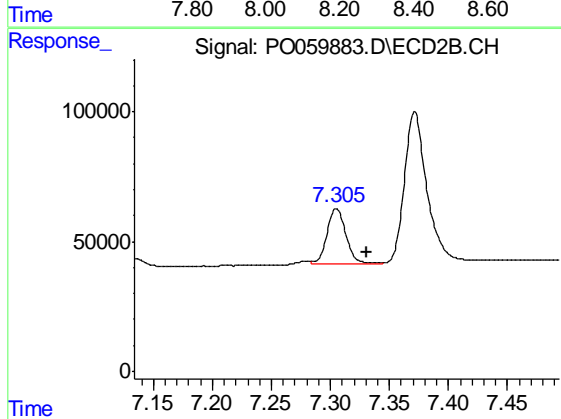
R.T.: 7.911 min
 Delta R.T.: 0.022 min
 Response: 14152
 Conc: 7.84 ng/ml



#41 AR-1268-1

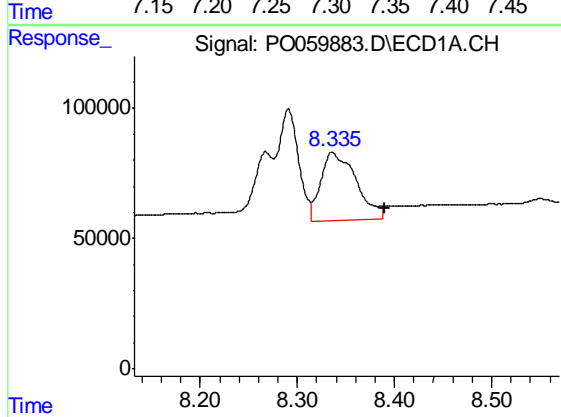
R.T.: 8.291 min
Delta R.T.: -0.011 min
Response: 1277416
Conc: 135.74 ng/ml

Instrument :
ECD_O
ClientSampleId :
PB122555BSD



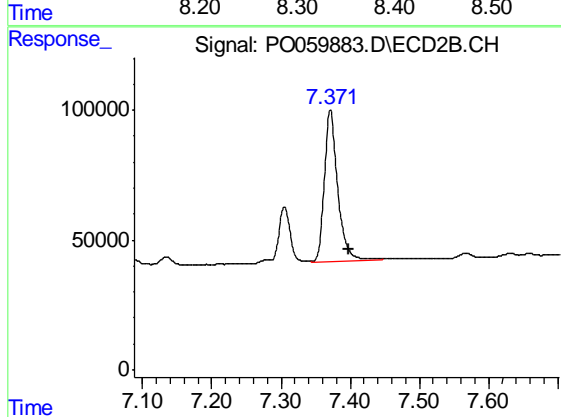
#41 AR-1268-1

R.T.: 7.305 min
Delta R.T.: -0.025 min
Response: 237832
Conc: 33.40 ng/ml



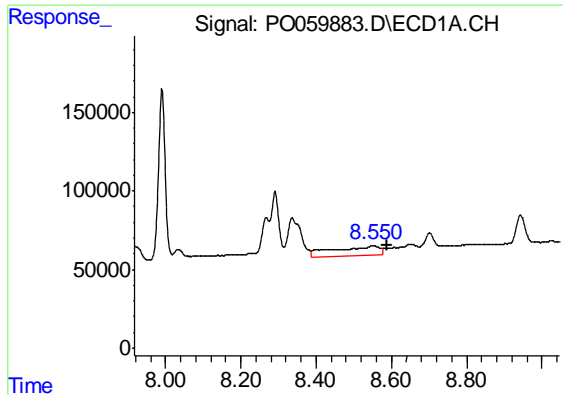
#42 AR-1268-2

R.T.: 8.336 min
Delta R.T.: -0.054 min
Response: 657677
Conc: 83.43 ng/ml



#42 AR-1268-2

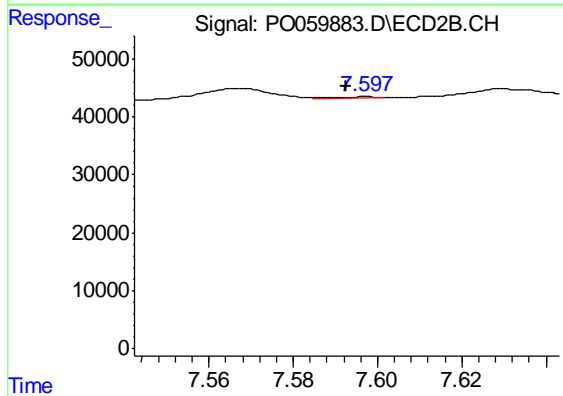
R.T.: 7.371 min
Delta R.T.: -0.026 min
Response: 781474
Conc: 121.20 ng/ml



#43 AR-1268-3

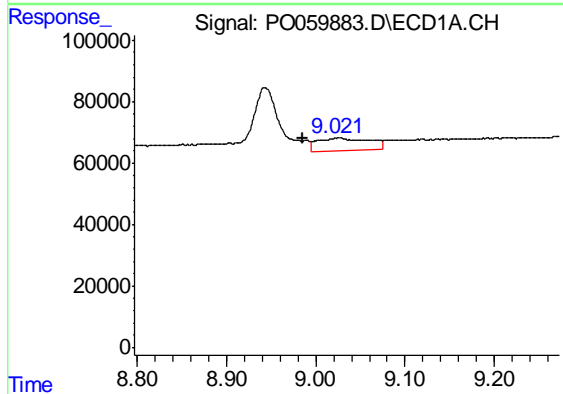
R.T.: 8.550 min
 Delta R.T.: -0.039 min
 Response: 537045
 Conc: 76.19 ng/ml

Instrument :
 ECD_O
 ClientSampleId :
 PB122555BSD



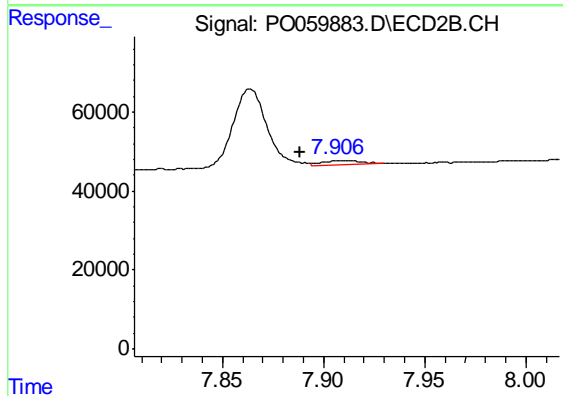
#43 AR-1268-3

R.T.: 7.597 min
 Delta R.T.: 0.005 min
 Response: 1441
 Conc: 0.26 ng/ml



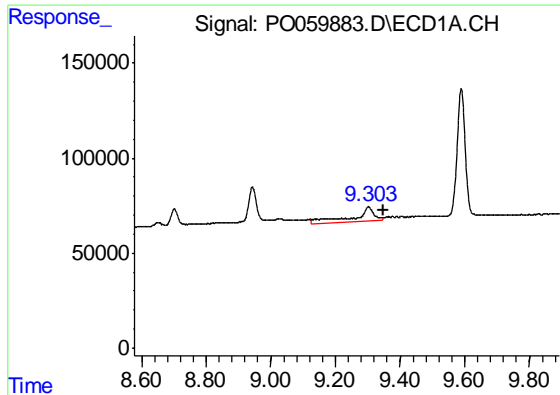
#44 AR-1268-4

R.T.: 9.025 min
 Delta R.T.: 0.040 min
 Response: 156546
 Conc: 56.31 ng/ml



#44 AR-1268-4

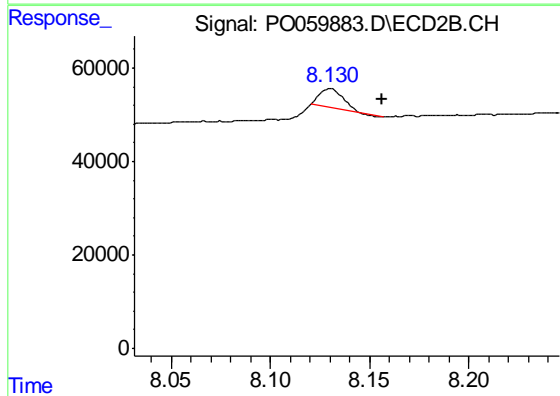
R.T.: 7.911 min
 Delta R.T.: 0.023 min
 Response: 14152
 Conc: 6.93 ng/ml



#45 AR-1268-5

R.T.: 9.303 min
Delta R.T.: -0.047 min
Response: 338464
Conc: 18.35 ng/ml

Instrument :
ECD_O
ClientSampleId :
PB122555BSD



#45 AR-1268-5

R.T.: 8.130 min
Delta R.T.: -0.026 min
Response: 33342
Conc: 2.29 ng/ml