

Data Path : Z:\pestpcbsrv\HPCHEM1\ECD\_0\Data\P0082719\  
 Data File : P0059929.D  
 Signal(s) : Signal #1: ECD1A.CH Signal #2: ECD2B.CH  
 Acq On : 28 Aug 2019 3:39  
 Operator : SM/AJ  
 Sample : K4528-10  
 Misc :  
 ALS Vial : 47 Sample Multiplier: 1

Instrument :  
 ECD\_0  
 ClientSampleId :  
 T9-12-13-S1-S4-(0-1.9)

Integration File signal 1: autoint1.e  
 Integration File signal 2: autoint2.e  
 Quant Time: Aug 28 08:40:11 2019  
 Quant Method : Z:\pestpcbsrv\HPCHEM1\ECD\_0\methods\P0081719.M  
 Quant Title : GC EXTRACTABLES  
 QLast Update : Sat Aug 17 03:09:44 2019  
 Response via : Initial Calibration  
 Integrator: ChemStation 6890 Scale Mode: Small noise peaks clipped

Volume Inj. : 2 µl  
 Signal #1 Phase : ZB-MR1 Signal #2 Phase: ZB-MR2  
 Signal #1 Info : 30Mx0.32mmx 0.50µ Signal #2 Info : 30M x 0.32mm x 0.25µm

| Compound                    | RT#1  | RT#2  | Resp#1  | Resp#2 | ng/ml   | ng/ml     |
|-----------------------------|-------|-------|---------|--------|---------|-----------|
| System Monitoring Compounds |       |       |         |        |         |           |
| 1) SA Tetrachlo...          | 4.126 | 3.502 | 1092811 | 848105 | 31.212  | 23.561    |
| 2) SA Decachlor...          | 9.596 | 8.357 | 837801  | 635496 | 15.748  | 15.761    |
| Target Compounds            |       |       |         |        |         |           |
| 3) L1 AR-1016-1             | 5.285 | 0.000 | 8531    | 0      | 5.319   | N.D. #    |
| 4) L1 AR-1016-2             | 5.285 | 0.000 | 8531    | 0      | 3.566   | N.D. #    |
| 5) L1 AR-1016-3             | 5.343 | 0.000 | 14103   | 0      | 9.468   | N.D. #    |
| 6) L1 AR-1016-4             | 5.465 | 0.000 | 1921    | 0      | 1.588   | N.D. #    |
| 7) L1 AR-1016-5             | 5.783 | 0.000 | 217     | 0      | 0.169   | N.D. #    |
| 8) L2 AR-1221-1             | 4.325 | 0.000 | 19698   | 0      | 46.516  | N.D. #    |
| 9) L2 AR-1221-2             | 4.428 | 0.000 | 45289   | 0      | 139.440 | N.D. #    |
| 10) L2 AR-1221-3            | 4.535 | 3.909 | 10320   | 261962 | 9.811   | 267.732 # |
| 11) L3 AR-1232-1            | 4.535 | 3.909 | 10320   | 261962 | 8.280   | 229.765 # |
| 12) L3 AR-1232-2            | 5.046 | 0.000 | 7547    | 0      | 10.683  | N.D. #    |
| 13) L3 AR-1232-3            | 5.343 | 0.000 | 14103   | 0      | 9.209   | N.D. #    |
| 14) L3 AR-1232-4            | 5.489 | 0.000 | 6000    | 0      | 7.674   | N.D. #    |
| 15) L3 AR-1232-5            | 5.574 | 0.000 | 6491    | 0      | 10.799  | N.D. #    |
| 16) L4 AR-1242-1            | 5.285 | 0.000 | 8531    | 0      | 6.720   | N.D. #    |
| 17) L4 AR-1242-2            | 5.343 | 0.000 | 14103   | 0      | 7.600   | N.D. #    |
| 18) L4 AR-1242-3            | 5.394 | 0.000 | 9333    | 0      | 7.985   | N.D. #    |
| 19) L4 AR-1242-4            | 5.489 | 0.000 | 6000    | 0      | 6.199   | N.D. #    |
| 20) L4 AR-1242-5            | 6.183 | 0.000 | 26414   | 0      | 21.020  | N.D. #    |
| 21) L5 AR-1248-1            | 5.285 | 0.000 | 8531    | 0      | 8.510   | N.D. #    |
| 22) L5 AR-1248-2            | 5.544 | 0.000 | 17891   | 0      | 12.331  | N.D. #    |
| 23) L5 AR-1248-3            | 5.783 | 0.000 | 217     | 0      | 0.131   | N.D. #    |
| 24) L5 AR-1248-4            | 6.113 | 0.000 | 107701  | 0      | 52.689  | N.D. #    |
| 25) L5 AR-1248-5            | 6.183 | 0.000 | 26414   | 0      | 13.320  | N.D. #    |
| 26) L6 AR-1254-1            | 6.113 | 0.000 | 107701  | 0      | 51.620  | N.D. #    |
| 27) L6 AR-1254-2            | 6.329 | 5.531 | 105465  | 156491 | 31.612  | 74.580 #  |
| 28) L6 AR-1254-3            | 6.693 | 5.871 | 209840  | 211871 | 59.136  | 63.010    |
| 29) L6 AR-1254-4            | 6.975 | 0.000 | 85119   | 0      | 28.897  | N.D. #    |
| 30) L6 AR-1254-5            | 7.391 | 6.505 | 387686  | 279234 | 125.368 | 89.931 #  |
| 31) L7 AR-1260-1            | 6.851 | 5.996 | 249668  | 165469 | 92.613  | 72.609    |
| 32) L7 AR-1260-2            | 7.106 | 6.183 | 206686  | 135926 | 55.703  | 46.393    |
| 33) L7 AR-1260-3            | 7.460 | 6.331 | 163839  | 178005 | 50.007  | 67.194 #  |
| 34) L7 AR-1260-4            | 7.685 | 6.793 | 241365  | 98137  | 78.587  | 43.374 #  |
| 35) L7 AR-1260-5            | 7.995 | 7.037 | 361123  | 276932 | 51.000  | 50.321    |
| 36) L8 AR-1262-1            | 7.517 | 6.538 | 89659   | 130027 | 18.475  | 34.883 #  |
| 37) L8 AR-1262-2            | 8.037 | 7.037 | 28651   | 276932 | 3.713   | 47.105 #  |
| 38) L8 AR-1262-3            | 8.296 | 7.375 | 269156  | 221032 | 52.752  | 86.987 #  |
| 39) L8 AR-1262-4            | 8.342 | 7.375 | 154563  | 221032 | 40.097  | 50.019    |
| 40) L8 AR-1262-5            | 8.950 | 0.000 | 139225  | 0      | 54.246  | N.D. #    |
| 41) L9 AR-1268-1            | 8.296 | 7.375 | 269156  | 221032 | 28.601  | 31.040    |

Data Path : Z:\pestpcbsrv\HPCHEM1\ECD\_0\Data\P0082719\  
 Data File : P0059929.D  
 Signal(s) : Signal #1: ECD1A.CH Signal #2: ECD2B.CH  
 Acq On : 28 Aug 2019 3:39  
 Operator : SM/AJ  
 Sample : K4528-10  
 Misc :  
 ALS Vial : 47 Sample Multiplier: 1

**Instrument :**  
 ECD\_0  
**ClientSampleId :**  
 T9-12-13-S1-S4-(0-1.9)

Integration File signal 1: autoint1.e  
 Integration File signal 2: autoint2.e  
 Quant Time: Aug 28 08:40:11 2019  
 Quant Method : Z:\pestpcbsrv\HPCHEM1\ECD\_0\methods\P0081719.M  
 Quant Title : GC EXTRACTABLES  
 QLast Update : Sat Aug 17 03:09:44 2019  
 Response via : Initial Calibration  
 Integrator: ChemStation 6890 Scale Mode: Small noise peaks clipped

Volume Inj. : 2 µl  
 Signal #1 Phase : ZB-MR1 Signal #2 Phase: ZB-MR2  
 Signal #1 Info : 30Mx0.32mmx 0.50µ Signal #2 Info : 30M x 0.32mm x 0.25µm

|     | Compound     | RT#1  | RT#2  | Resp#1 | Resp#2 | ng/ml  | ng/ml    |
|-----|--------------|-------|-------|--------|--------|--------|----------|
| 42) | L9 AR-1268-2 | 8.436 | 7.375 | 25571  | 221032 | 3.244  | 34.279 # |
| 43) | L9 AR-1268-3 | 8.608 | 0.000 | 25384  | 0      | 3.601  | N.D. #   |
| 44) | L9 AR-1268-4 | 8.950 | 0.000 | 139225 | 0      | 50.080 | N.D. #   |
| 45) | L9 AR-1268-5 | 9.310 | 0.000 | 92521  | 0      | 5.017  | N.D. #   |

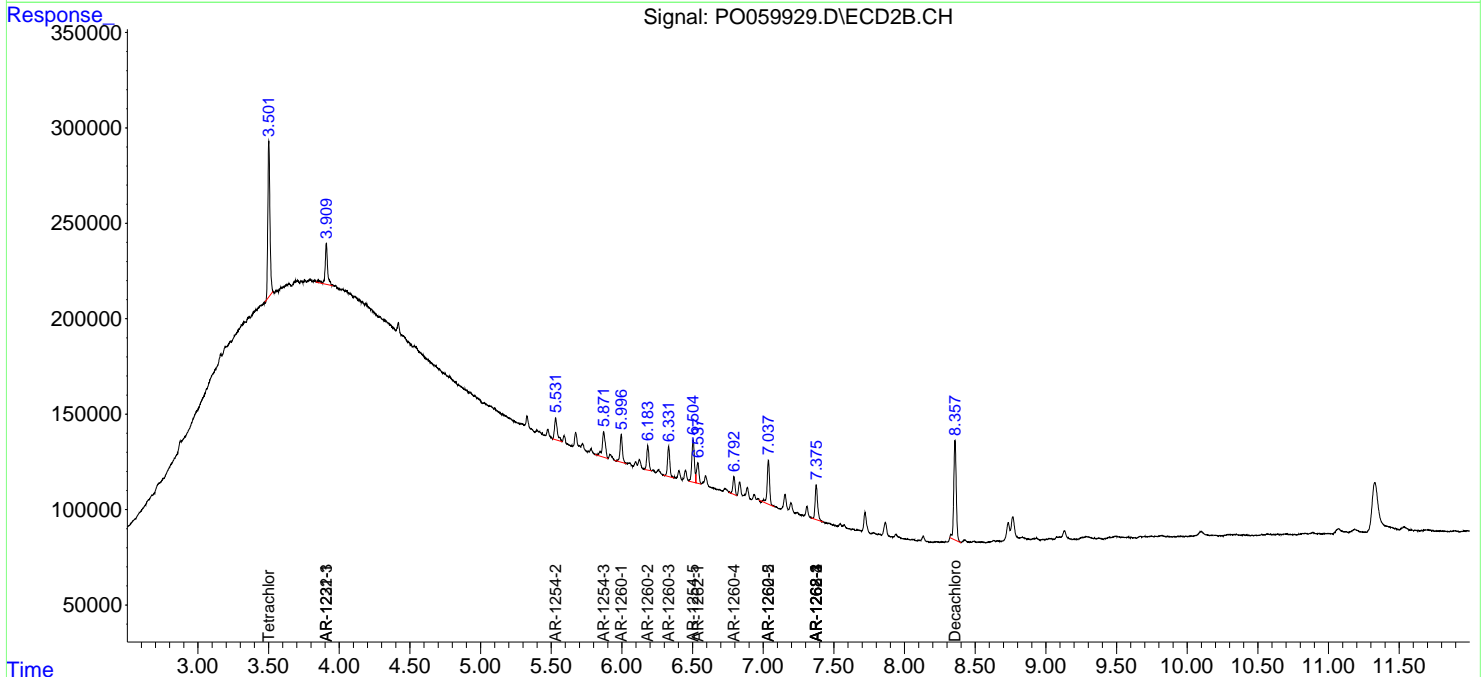
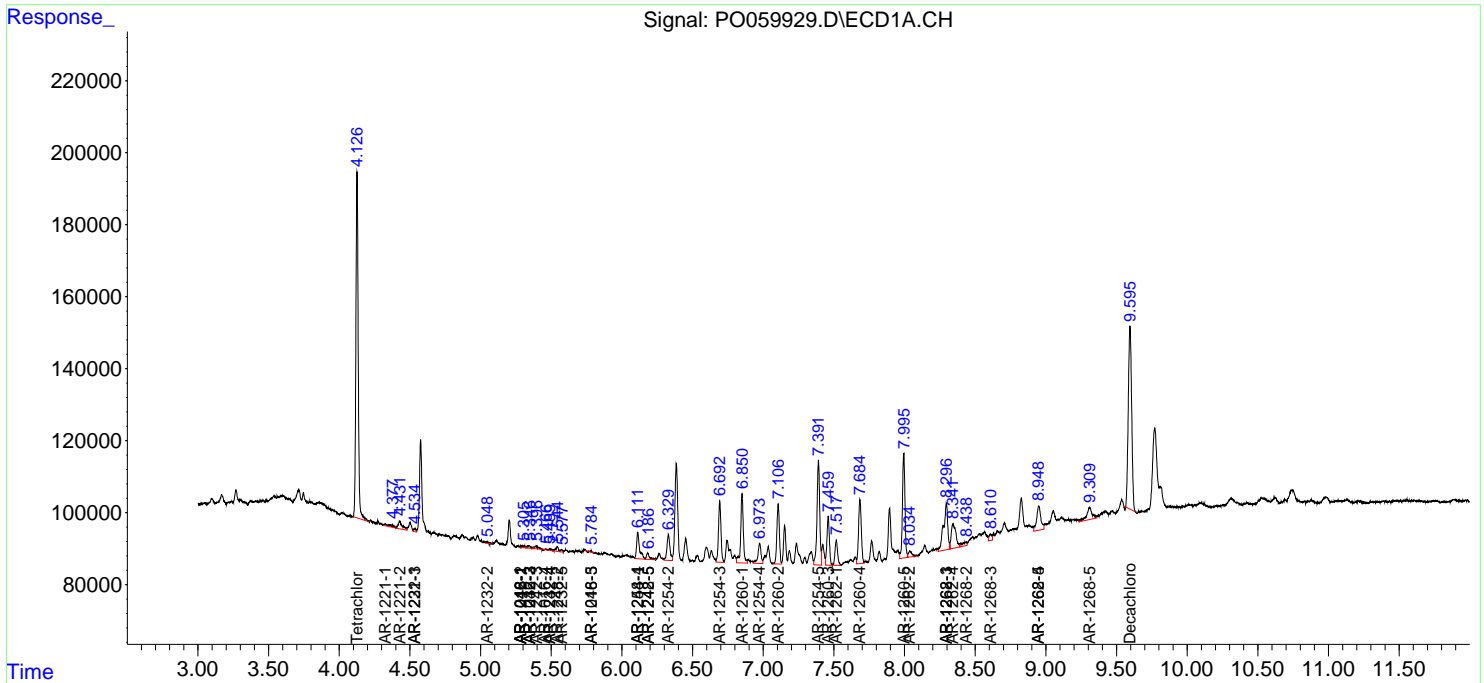
(f)=RT Delta > 1/2 Window (#)=Amounts differ by > 25% (m)=manual int.

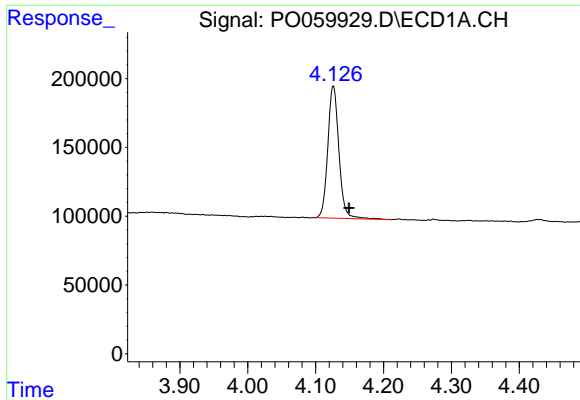
Data Path : Z:\pestpcbsrv\HPCHEM1\ECD\_O\Data\P0082719\  
 Data File : P0059929.D  
 Signal(s) : Signal #1: ECD1A.CH Signal #2: ECD2B.CH  
 Acq On : 28 Aug 2019 3:39  
 Operator : SM/AJ  
 Sample : K4528-10  
 Misc :  
 ALS Vial : 47 Sample Multiplier: 1

Instrument :  
 ECD\_O  
 ClientSampled :  
 T9-12-13-S1-S4-(0-1.9)

Integration File signal 1: autoint1.e  
 Integration File signal 2: autoint2.e  
 Quant Time: Aug 28 08:40:11 2019  
 Quant Method : Z:\pestpcbsrv\HPCHEM1\ECD\_O\methods\P0081719.M  
 Quant Title : GC EXTRACTABLES  
 QLast Update : Sat Aug 17 03:09:44 2019  
 Response via : Initial Calibration  
 Integrator: ChemStation 6890 Scale Mode: Small noise peaks clipped

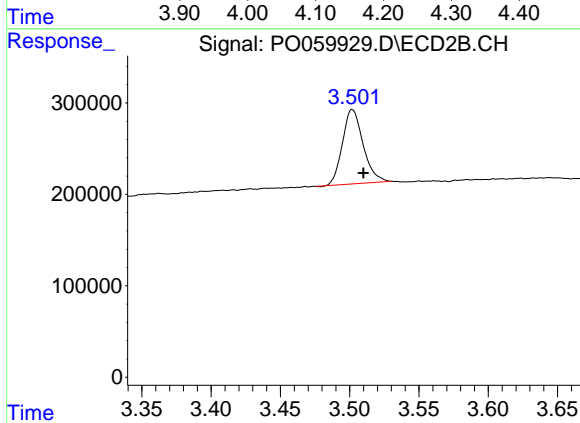
Volume Inj. : 2 µl  
 Signal #1 Phase : ZB-MR1 Signal #2 Phase: ZB-MR2  
 Signal #1 Info : 30Mx0.32mmx 0.50µ Signal #2 Info : 30M x 0.32mm x 0.25µm



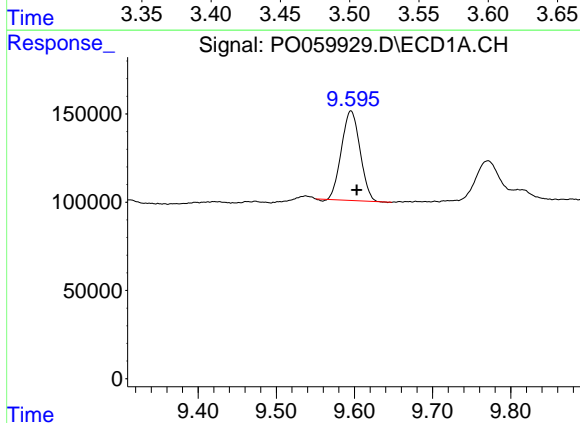


#1 Tetrachloro-m-xylene  
 R.T.: 4.126 min  
 Delta R.T.: -0.023 min  
 Response: 1092811  
 Conc: 31.21 ng/ml

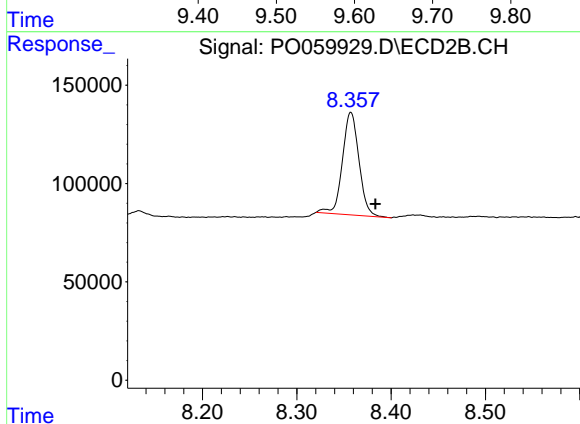
Instrument :  
 ECD\_O  
 ClientSampleId :  
 T9-12-13-S1-S4-(0-1.9)



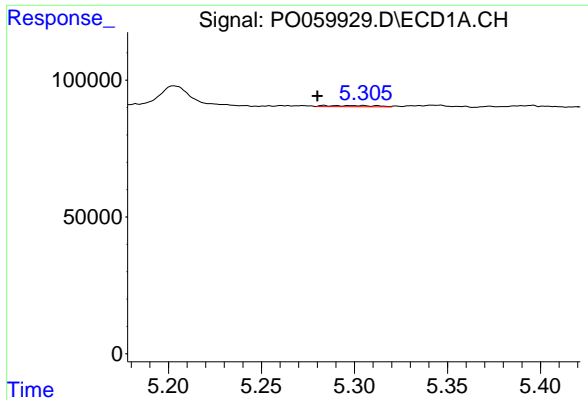
#1 Tetrachloro-m-xylene  
 R.T.: 3.502 min  
 Delta R.T.: -0.008 min  
 Response: 848105  
 Conc: 23.56 ng/ml



#2 Decachlorobiphenyl  
 R.T.: 9.596 min  
 Delta R.T.: -0.007 min  
 Response: 837801  
 Conc: 15.75 ng/ml



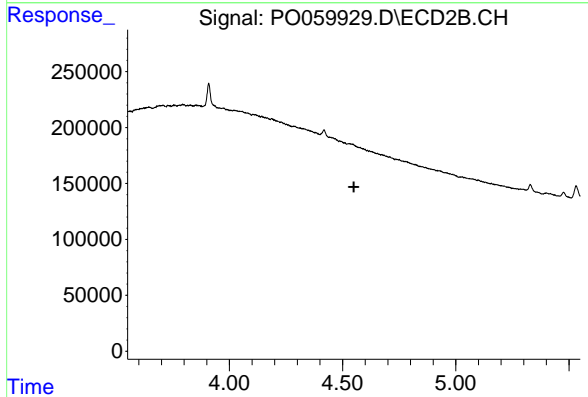
#2 Decachlorobiphenyl  
 R.T.: 8.357 min  
 Delta R.T.: -0.026 min  
 Response: 635496  
 Conc: 15.76 ng/ml



#3 AR-1016-1

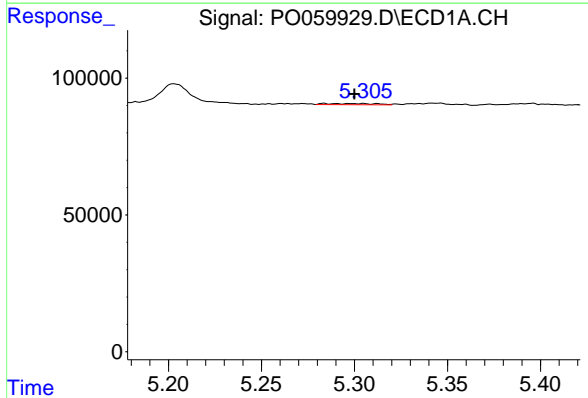
R.T.: 5.285 min  
 Delta R.T.: 0.005 min  
 Response: 8531  
 Conc: 5.32 ng/ml

Instrument :  
 ECD\_O  
 ClientSampled :  
 T9-12-13-S1-S4-(0-1.9)



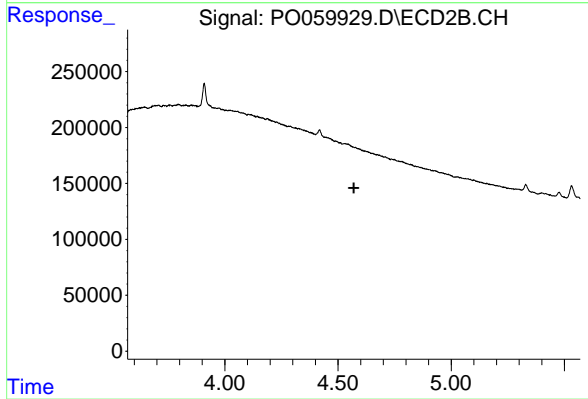
#3 AR-1016-1

R.T.: 0.000 min  
 Exp R.T. : 4.550 min  
 Response: 0  
 Conc: N.D.



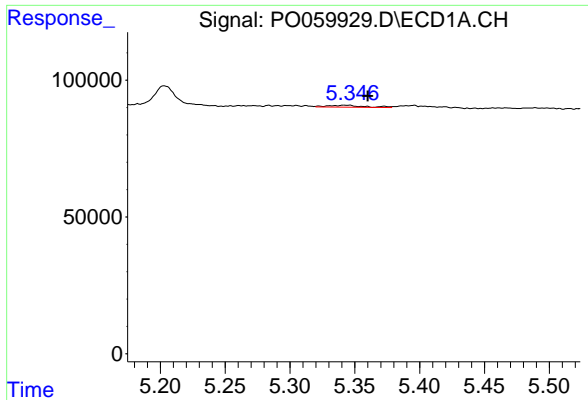
#4 AR-1016-2

R.T.: 5.285 min  
 Delta R.T.: -0.015 min  
 Response: 8531  
 Conc: 3.57 ng/ml



#4 AR-1016-2

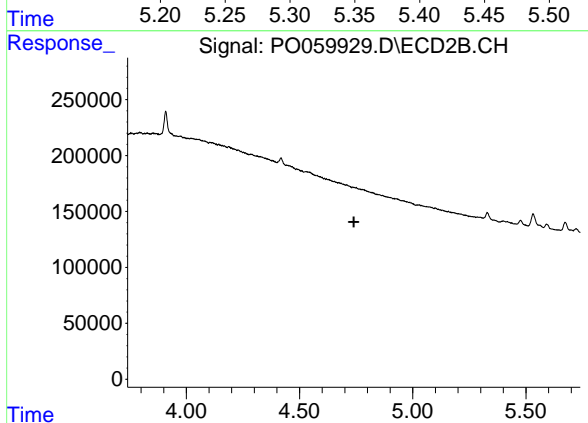
R.T.: 0.000 min  
 Exp R.T. : 4.570 min  
 Response: 0  
 Conc: N.D.



#5 AR-1016-3

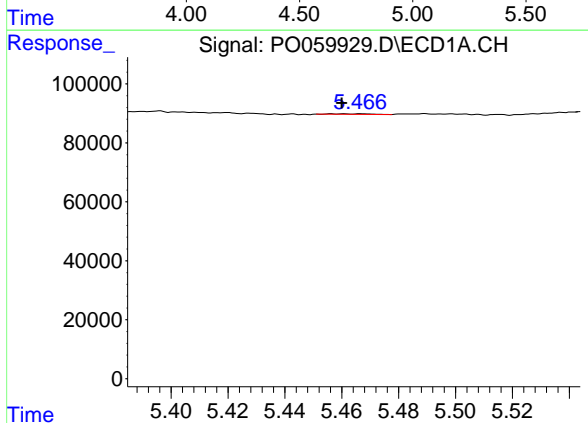
R.T.: 5.343 min  
 Delta R.T.: -0.017 min  
 Response: 14103  
 Conc: 9.47 ng/ml

Instrument :  
 ECD\_O  
 ClientSampleId :  
 T9-12-13-S1-S4-(0-1.9)



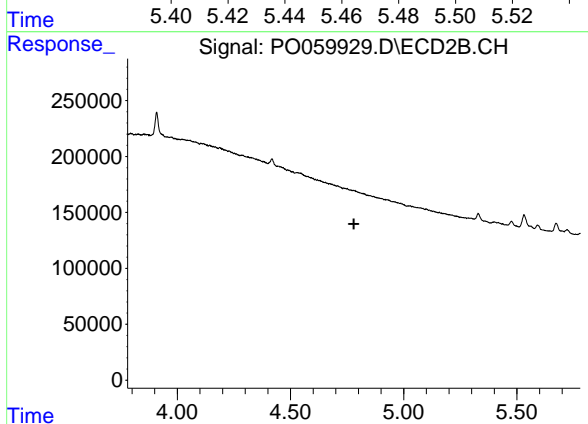
#5 AR-1016-3

R.T.: 0.000 min  
 Exp R.T. : 4.740 min  
 Response: 0  
 Conc: N.D.



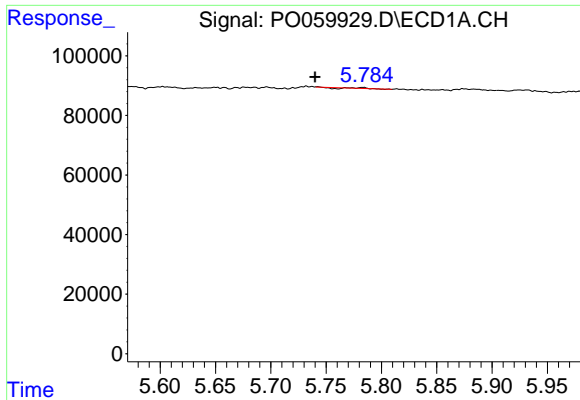
#6 AR-1016-4

R.T.: 5.465 min  
 Delta R.T.: 0.005 min  
 Response: 1921  
 Conc: 1.59 ng/ml



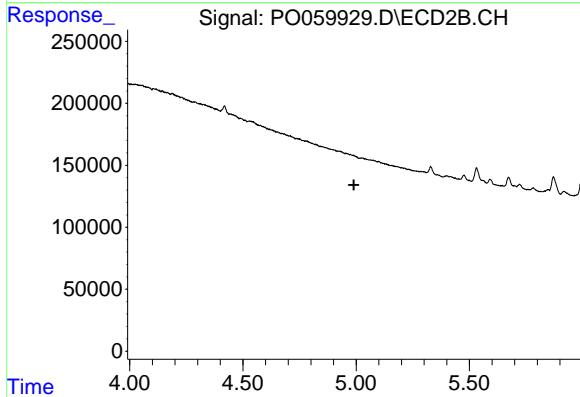
#6 AR-1016-4

R.T.: 0.000 min  
 Exp R.T. : 4.780 min  
 Response: 0  
 Conc: N.D.

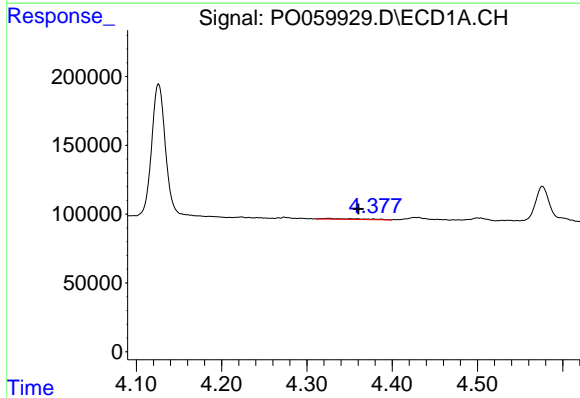


#7 AR-1016-5  
 R.T.: 5.783 min  
 Delta R.T.: 0.043 min  
 Response: 217  
 Conc: 0.17 ng/ml

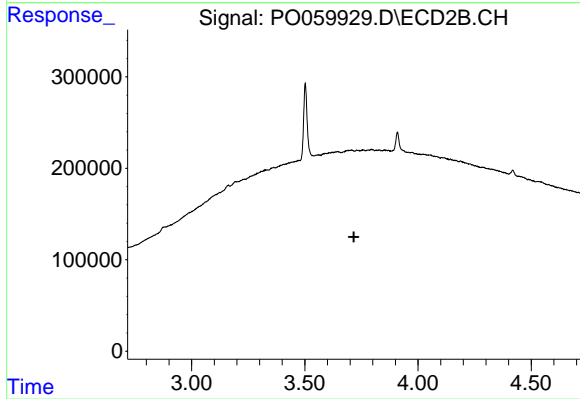
**Instrument :**  
 ECD\_O  
**ClientSampled :**  
 T9-12-13-S1-S4-(0-1.9)



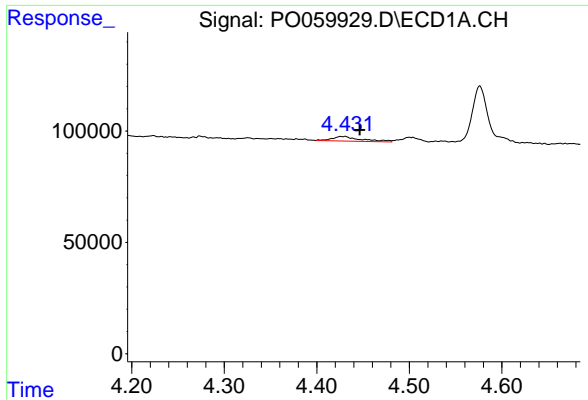
#7 AR-1016-5  
 R.T.: 0.000 min  
 Exp R.T. : 4.990 min  
 Response: 0  
 Conc: N.D.



#8 AR-1221-1  
 R.T.: 4.325 min  
 Delta R.T.: -0.035 min  
 Response: 19698  
 Conc: 46.52 ng/ml

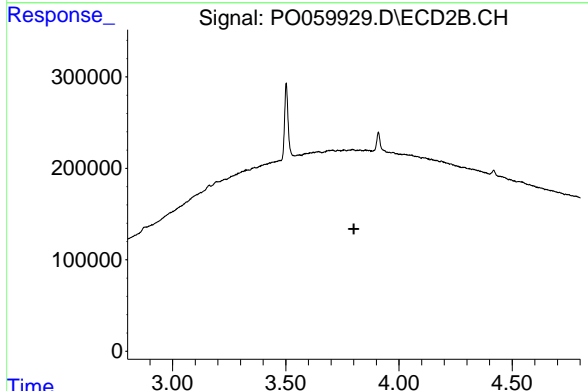


#8 AR-1221-1  
 R.T.: 0.000 min  
 Exp R.T. : 3.717 min  
 Response: 0  
 Conc: N.D.

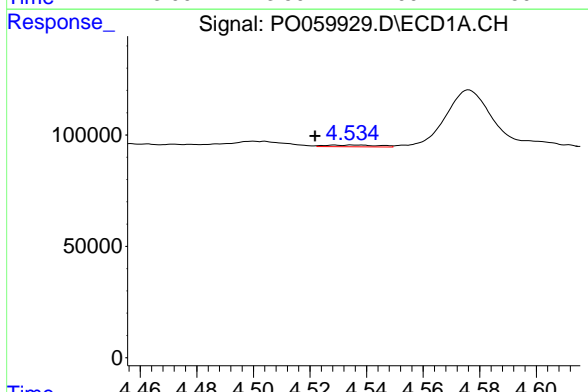


#9 AR-1221-2  
 R.T.: 4.428 min  
 Delta R.T.: -0.018 min  
 Response: 45289  
 Conc: 139.44 ng/ml

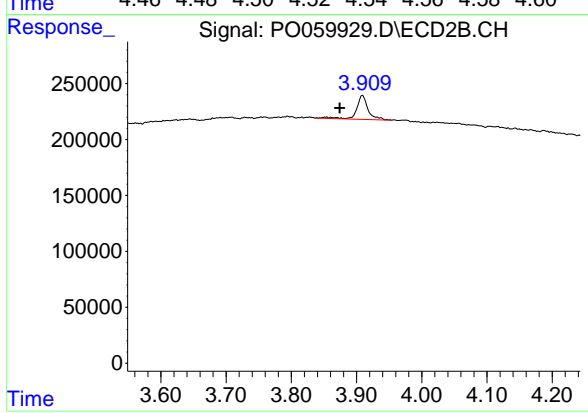
**Instrument :**  
 ECD\_O  
**ClientSampled :**  
 T9-12-13-S1-S4-(0-1.9)



#9 AR-1221-2  
 R.T.: 0.000 min  
 Exp R.T. : 3.801 min  
 Response: 0  
 Conc: N.D.

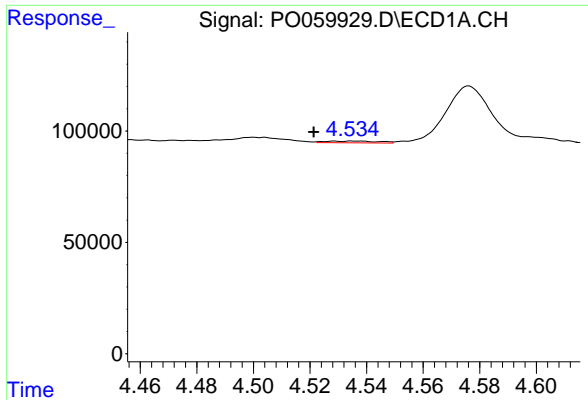


#10 AR-1221-3  
 R.T.: 4.535 min  
 Delta R.T.: 0.013 min  
 Response: 10320  
 Conc: 9.81 ng/ml



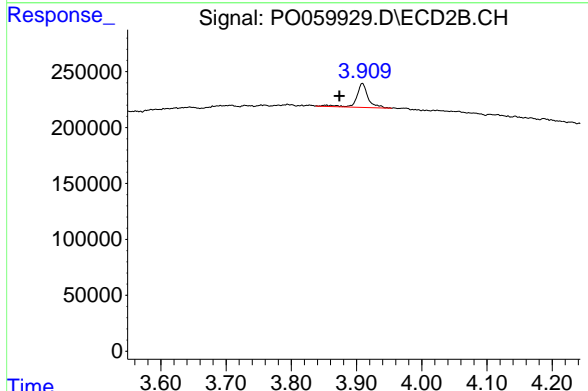
#10 AR-1221-3  
 R.T.: 3.909 min  
 Delta R.T.: 0.035 min  
 Response: 261962  
 Conc: 267.73 ng/ml



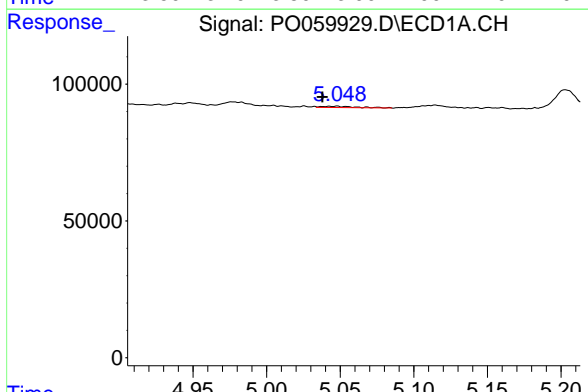


#11 AR-1232-1  
 R.T.: 4.535 min  
 Delta R.T.: 0.014 min  
 Response: 10320  
 Conc: 8.28 ng/ml

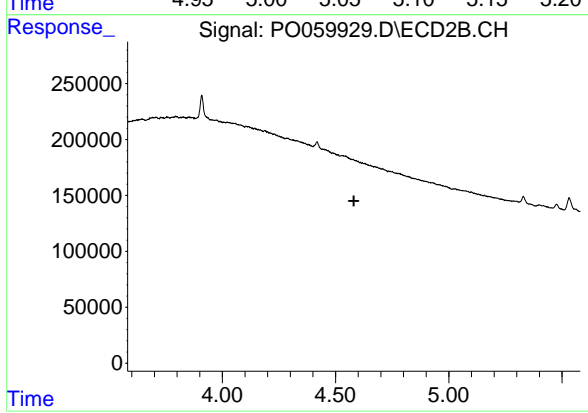
**Instrument :**  
 ECD\_O  
**ClientSampled :**  
 T9-12-13-S1-S4-(0-1.9)



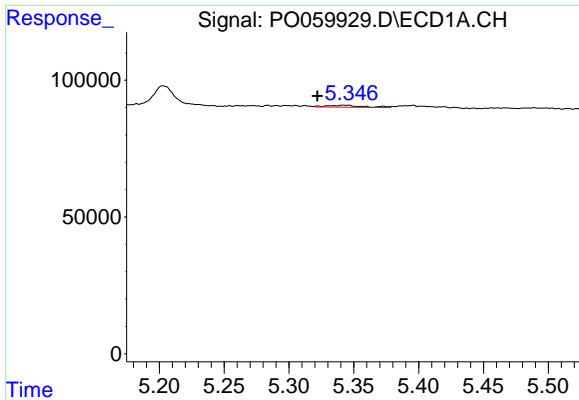
#11 AR-1232-1  
 R.T.: 3.909 min  
 Delta R.T.: 0.035 min  
 Response: 261962  
 Conc: 229.77 ng/ml



#12 AR-1232-2  
 R.T.: 5.046 min  
 Delta R.T.: 0.008 min  
 Response: 7547  
 Conc: 10.68 ng/ml



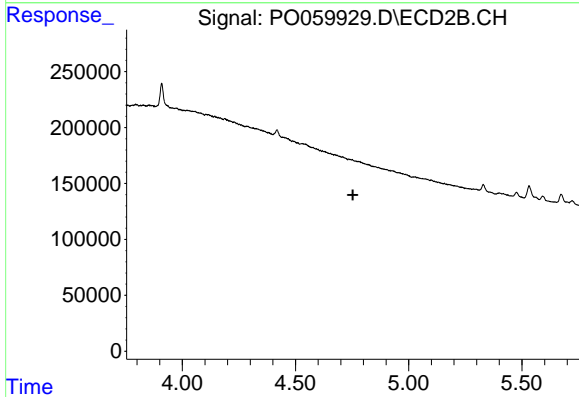
#12 AR-1232-2  
 R.T.: 0.000 min  
 Exp R.T. : 4.581 min  
 Response: 0  
 Conc: N.D.



#13 AR-1232-3

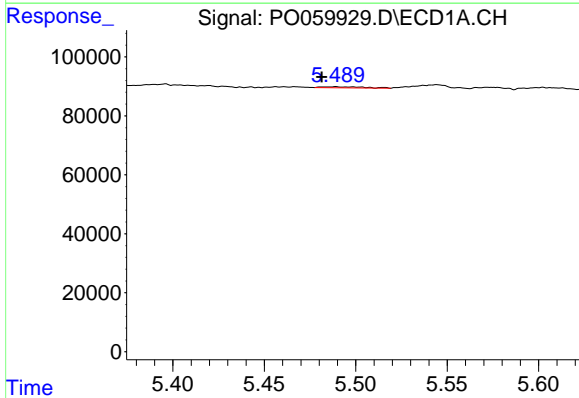
R.T.: 5.343 min  
 Delta R.T.: 0.021 min  
 Response: 14103  
 Conc: 9.21 ng/ml

Instrument :  
 ECD\_O  
 ClientSampleId :  
 T9-12-13-S1-S4-(0-1.9)



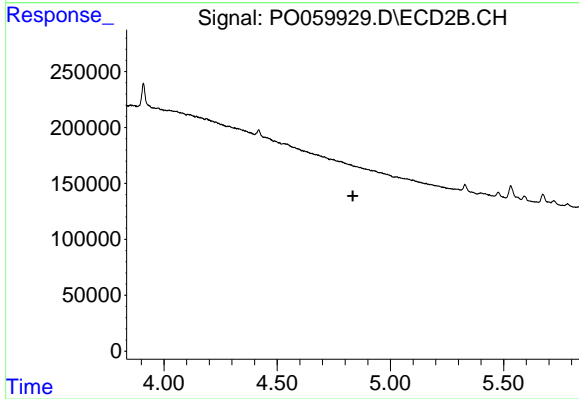
#13 AR-1232-3

R.T.: 0.000 min  
 Exp R.T. : 4.753 min  
 Response: 0  
 Conc: N.D.



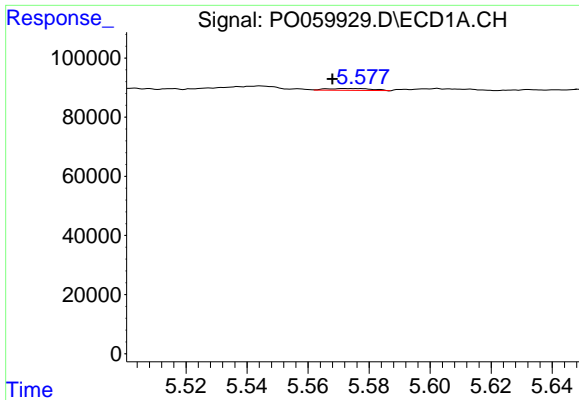
#14 AR-1232-4

R.T.: 5.489 min  
 Delta R.T.: 0.007 min  
 Response: 6000  
 Conc: 7.67 ng/ml



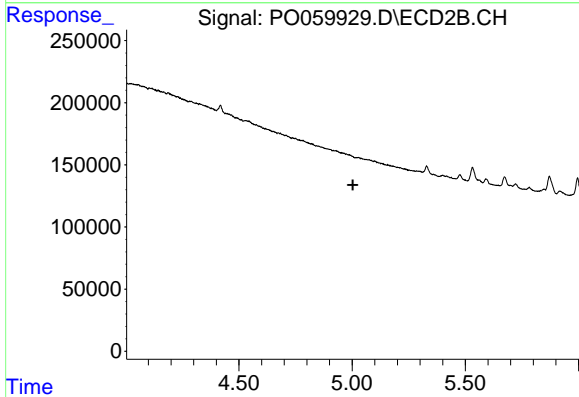
#14 AR-1232-4

R.T.: 0.000 min  
 Exp R.T. : 4.834 min  
 Response: 0  
 Conc: N.D.

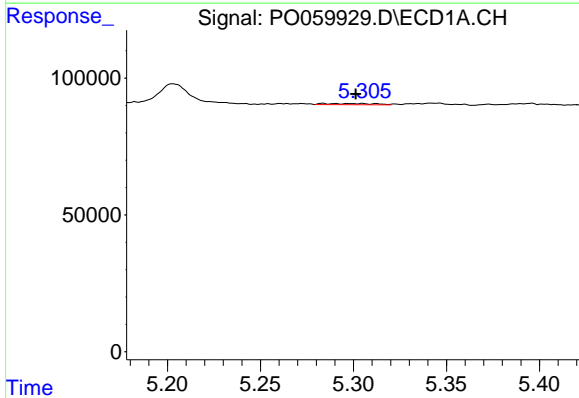


#15 AR-1232-5  
 R.T.: 5.574 min  
 Delta R.T.: 0.006 min  
 Response: 6491  
 Conc: 10.80 ng/ml

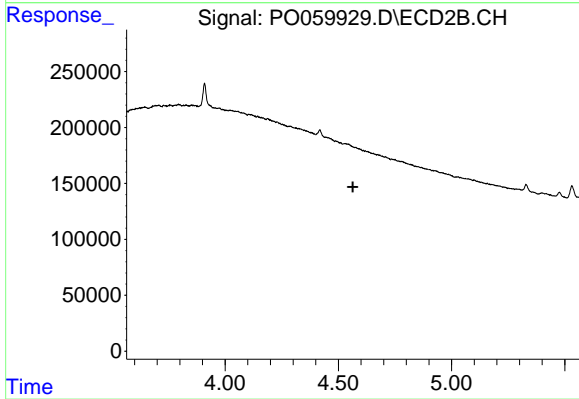
**Instrument :**  
 ECD\_O  
**ClientSampled :**  
 T9-12-13-S1-S4-(0-1.9)



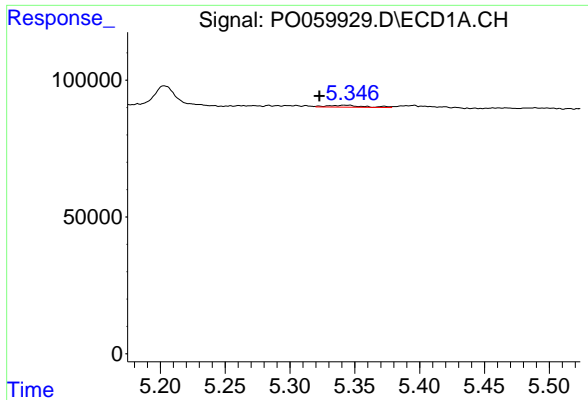
#15 AR-1232-5  
 R.T.: 0.000 min  
 Exp R.T. : 5.004 min  
 Response: 0  
 Conc: N.D.



#16 AR-1242-1  
 R.T.: 5.285 min  
 Delta R.T.: -0.016 min  
 Response: 8531  
 Conc: 6.72 ng/ml



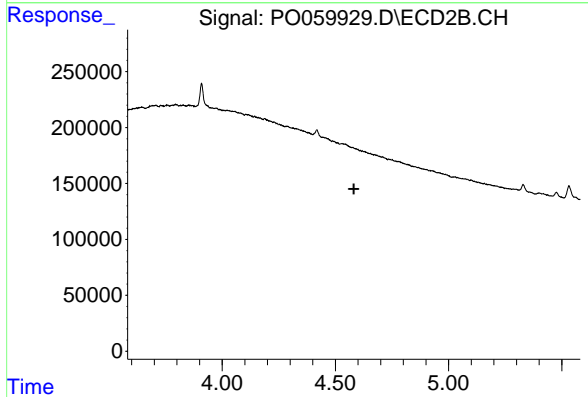
#16 AR-1242-1  
 R.T.: 0.000 min  
 Exp R.T. : 4.564 min  
 Response: 0  
 Conc: N.D.



#17 AR-1242-2

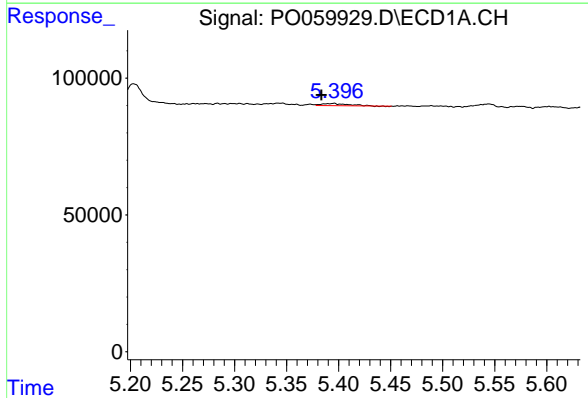
R.T.: 5.343 min  
 Delta R.T.: 0.021 min  
 Response: 14103  
 Conc: 7.60 ng/ml

Instrument :  
 ECD\_O  
 ClientSampleId :  
 T9-12-13-S1-S4-(0-1.9)



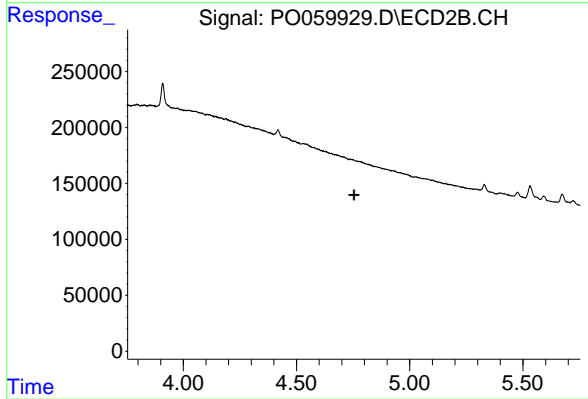
#17 AR-1242-2

R.T.: 0.000 min  
 Exp R.T. : 4.581 min  
 Response: 0  
 Conc: N.D.



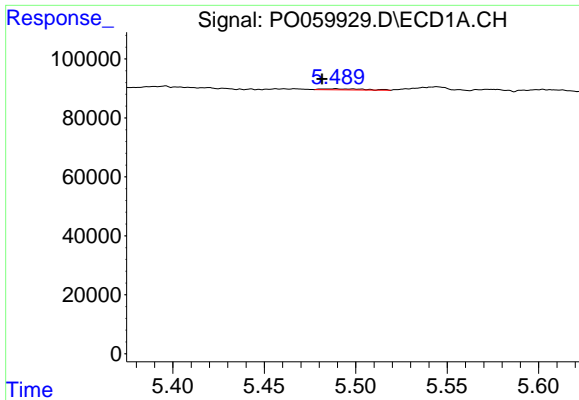
#18 AR-1242-3

R.T.: 5.394 min  
 Delta R.T.: 0.011 min  
 Response: 9333  
 Conc: 7.99 ng/ml



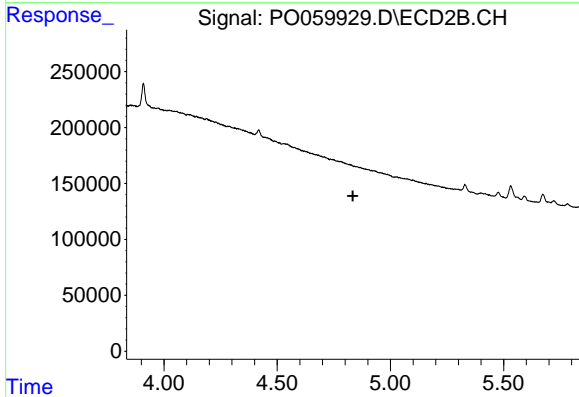
#18 AR-1242-3

R.T.: 0.000 min  
 Exp R.T. : 4.754 min  
 Response: 0  
 Conc: N.D.

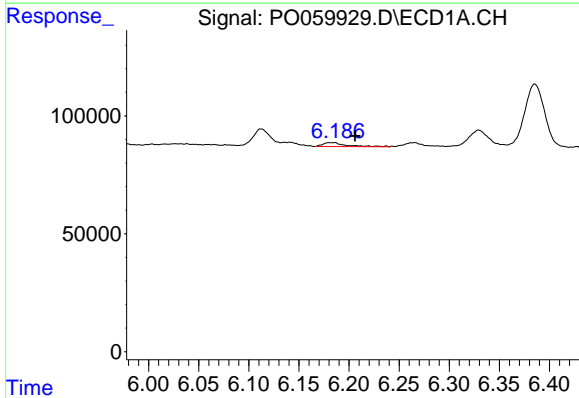


#19 AR-1242-4  
 R.T.: 5.489 min  
 Delta R.T.: 0.007 min  
 Response: 6000  
 Conc: 6.20 ng/ml

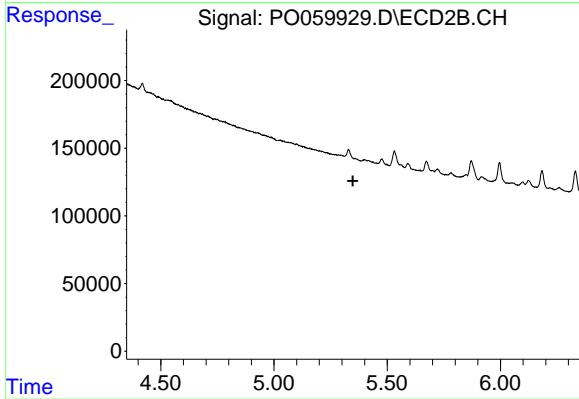
**Instrument :**  
 ECD\_O  
**ClientSampled :**  
 T9-12-13-S1-S4-(0-1.9)



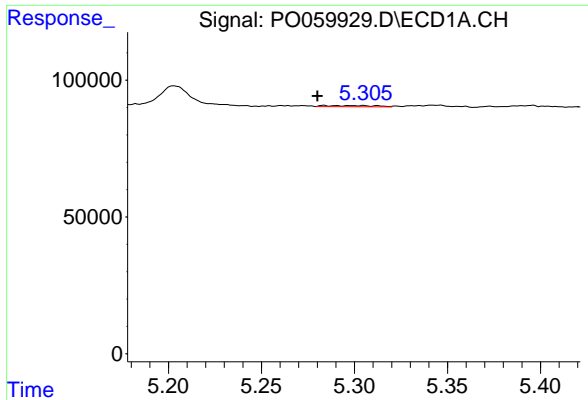
#19 AR-1242-4  
 R.T.: 0.000 min  
 Exp R.T. : 4.834 min  
 Response: 0  
 Conc: N.D.



#20 AR-1242-5  
 R.T.: 6.183 min  
 Delta R.T.: -0.023 min  
 Response: 26414  
 Conc: 21.02 ng/ml



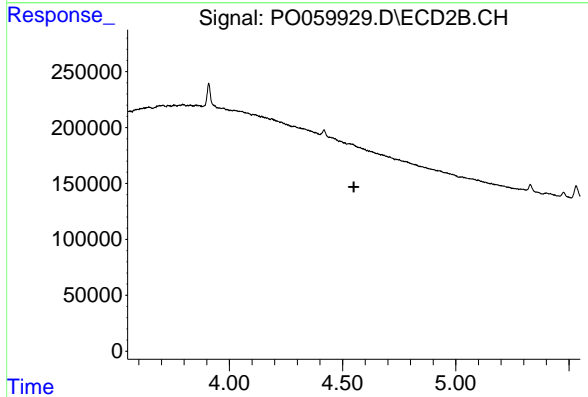
#20 AR-1242-5  
 R.T.: 0.000 min  
 Exp R.T. : 5.348 min  
 Response: 0  
 Conc: N.D.



#21 AR-1248-1

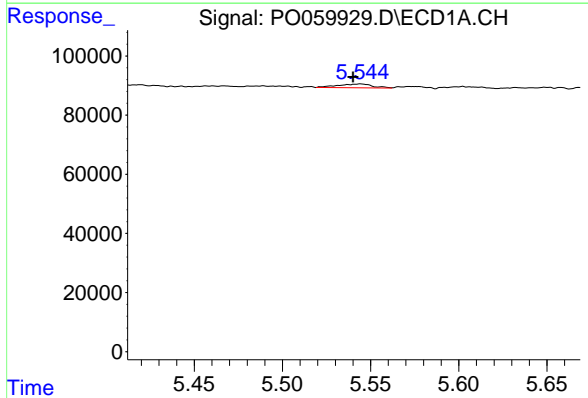
R.T.: 5.285 min  
 Delta R.T.: 0.005 min  
 Response: 8531  
 Conc: 8.51 ng/ml

Instrument :  
 ECD\_O  
 ClientSampleId :  
 T9-12-13-S1-S4-(0-1.9)



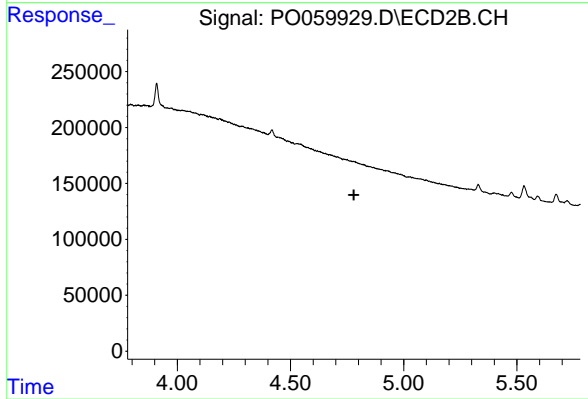
#21 AR-1248-1

R.T.: 0.000 min  
 Exp R.T. : 4.550 min  
 Response: 0  
 Conc: N.D.



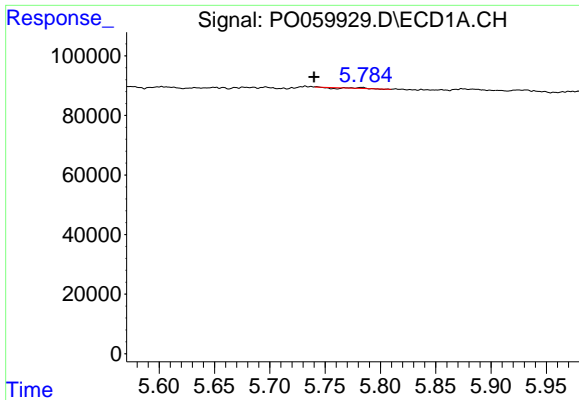
#22 AR-1248-2

R.T.: 5.544 min  
 Delta R.T.: 0.004 min  
 Response: 17891  
 Conc: 12.33 ng/ml



#22 AR-1248-2

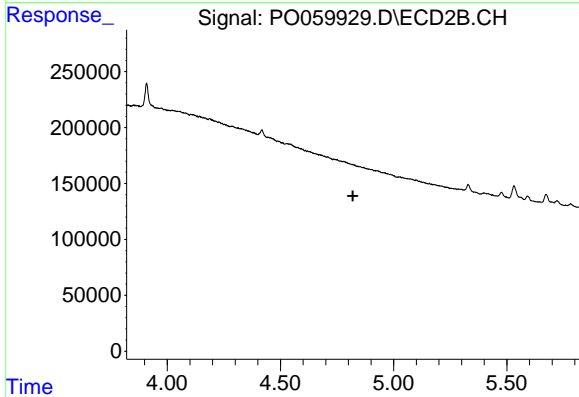
R.T.: 0.000 min  
 Exp R.T. : 4.780 min  
 Response: 0  
 Conc: N.D.



#23 AR-1248-3

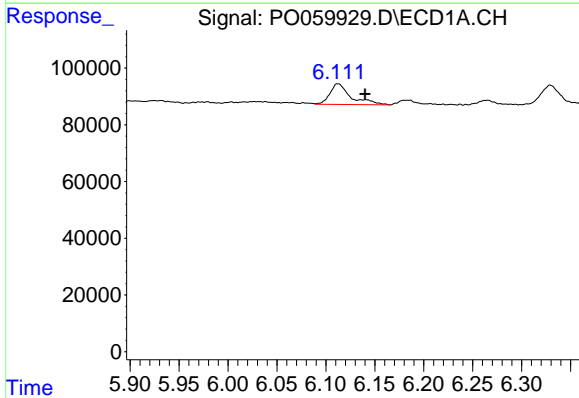
R.T.: 5.783 min  
 Delta R.T.: 0.043 min  
 Response: 217  
 Conc: 0.13 ng/ml

Instrument :  
 ECD\_O  
 ClientSampled :  
 T9-12-13-S1-S4-(0-1.9)



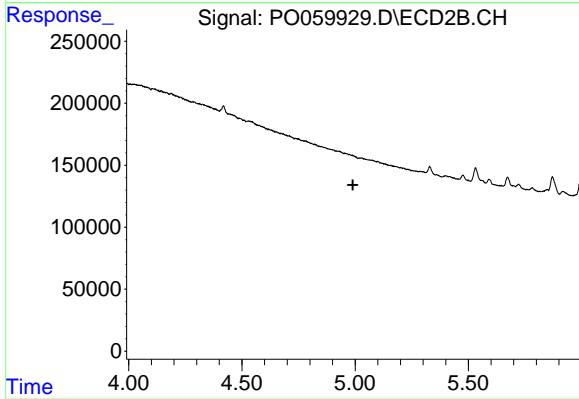
#23 AR-1248-3

R.T.: 0.000 min  
 Exp R.T. : 4.820 min  
 Response: 0  
 Conc: N.D.



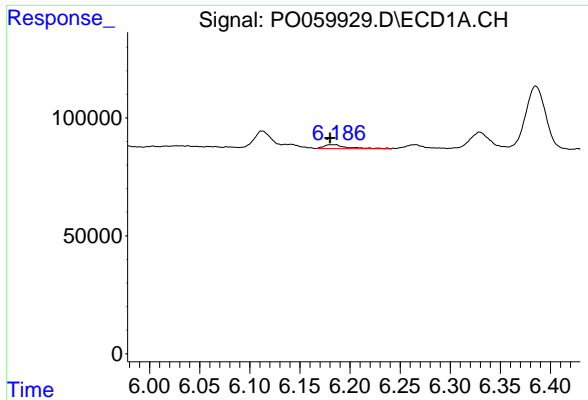
#24 AR-1248-4

R.T.: 6.113 min  
 Delta R.T.: -0.027 min  
 Response: 107701  
 Conc: 52.69 ng/ml



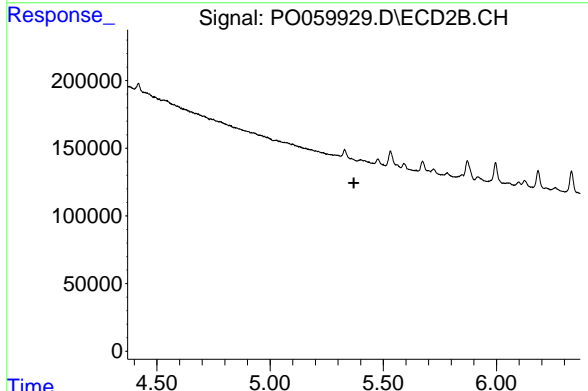
#24 AR-1248-4

R.T.: 0.000 min  
 Exp R.T. : 4.990 min  
 Response: 0  
 Conc: N.D.

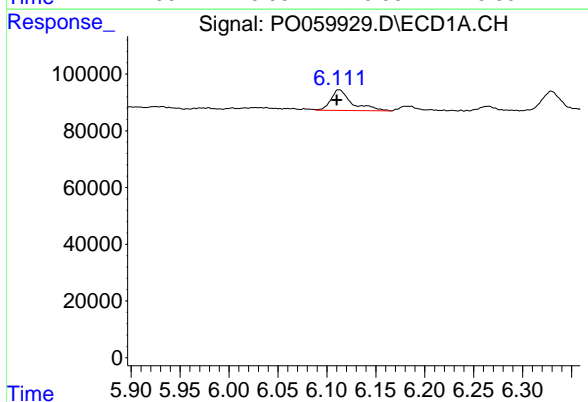


#25 AR-1248-5  
 R.T.: 6.183 min  
 Delta R.T.: 0.003 min  
 Response: 26414  
 Conc: 13.32 ng/ml

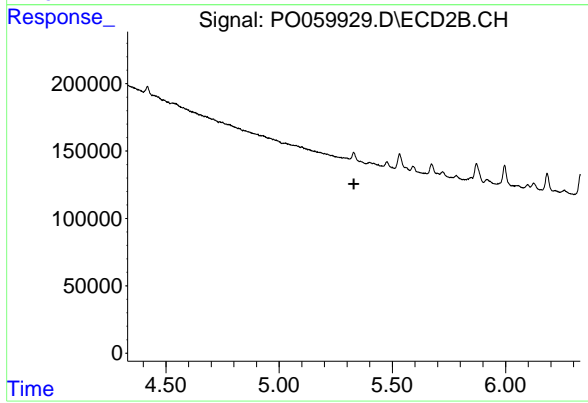
Instrument :  
 ECD\_O  
 ClientSampleId :  
 T9-12-13-S1-S4-(0-1.9)



#25 AR-1248-5  
 R.T.: 0.000 min  
 Exp R.T. : 5.370 min  
 Response: 0  
 Conc: N.D.

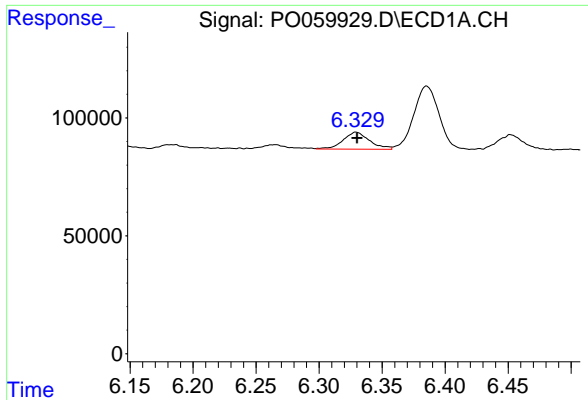


#26 AR-1254-1  
 R.T.: 6.113 min  
 Delta R.T.: 0.003 min  
 Response: 107701  
 Conc: 51.62 ng/ml



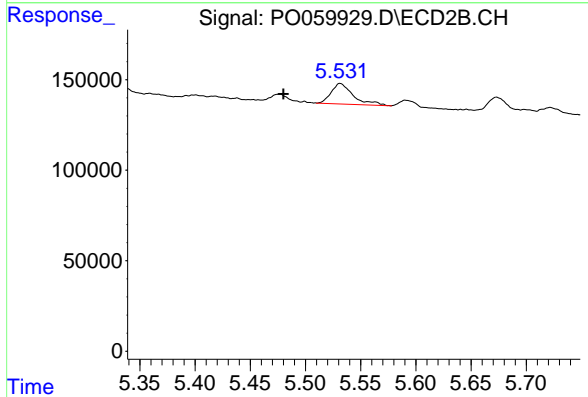
#26 AR-1254-1  
 R.T.: 0.000 min  
 Exp R.T. : 5.330 min  
 Response: 0  
 Conc: N.D.



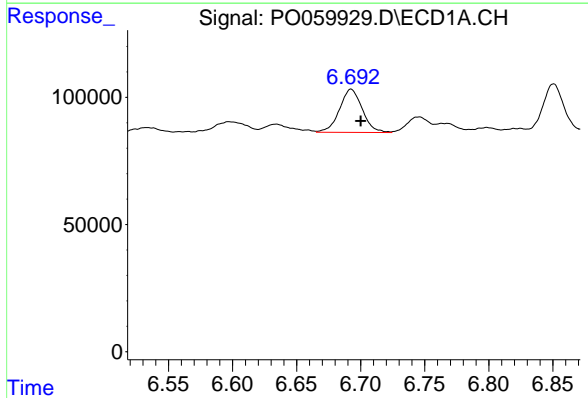


#27 AR-1254-2  
 R.T.: 6.329 min  
 Delta R.T.: 0.000 min  
 Response: 105465  
 Conc: 31.61 ng/ml

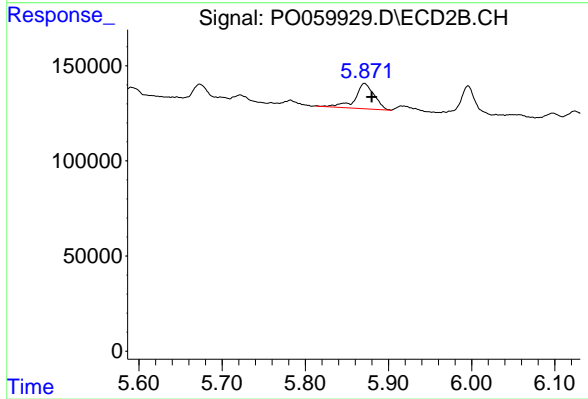
**Instrument :**  
 ECD\_O  
**ClientSampleId :**  
 T9-12-13-S1-S4-(0-1.9)



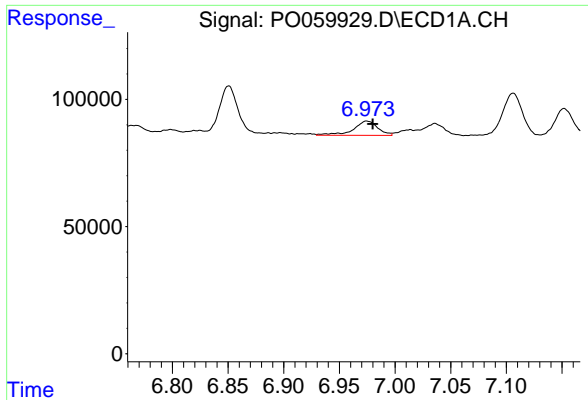
#27 AR-1254-2  
 R.T.: 5.531 min  
 Delta R.T.: 0.051 min  
 Response: 156491  
 Conc: 74.58 ng/ml



#28 AR-1254-3  
 R.T.: 6.693 min  
 Delta R.T.: -0.007 min  
 Response: 209840  
 Conc: 59.14 ng/ml

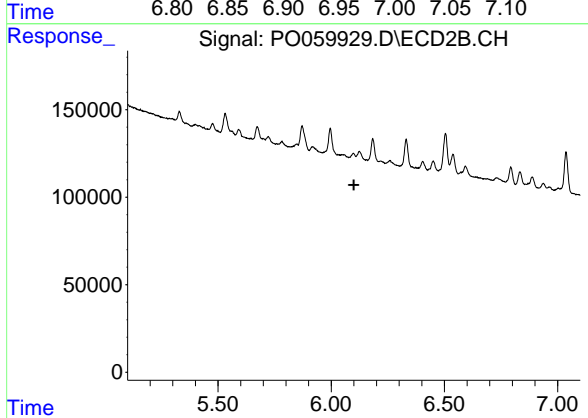


#28 AR-1254-3  
 R.T.: 5.871 min  
 Delta R.T.: -0.009 min  
 Response: 211871  
 Conc: 63.01 ng/ml

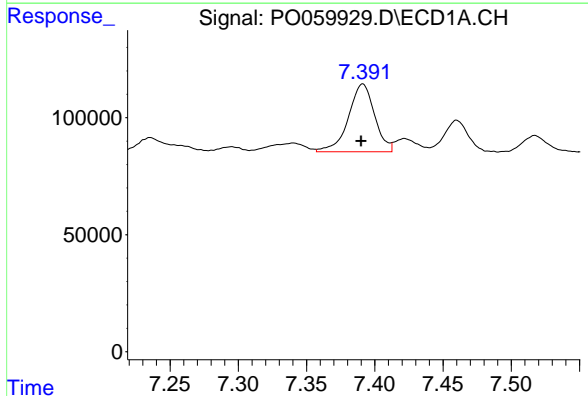


#29 AR-1254-4  
 R.T.: 6.975 min  
 Delta R.T.: -0.005 min  
 Response: 85119  
 Conc: 28.90 ng/ml

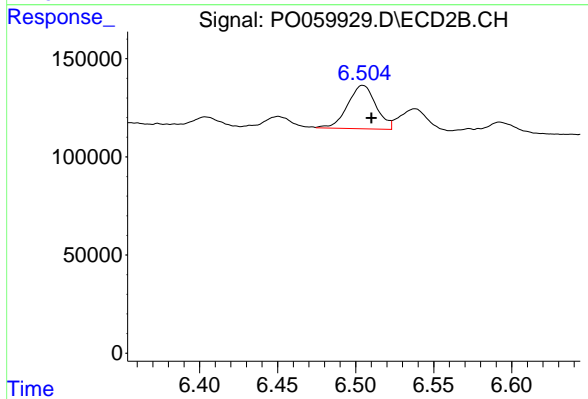
**Instrument :**  
 ECD\_O  
**ClientSampled :**  
 T9-12-13-S1-S4-(0-1.9)



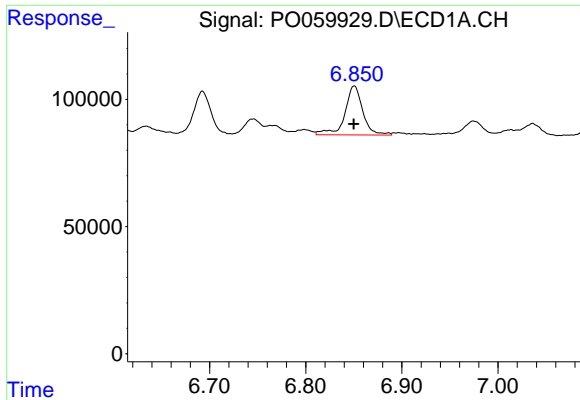
#29 AR-1254-4  
 R.T.: 0.000 min  
 Exp R.T. : 6.100 min  
 Response: 0  
 Conc: N.D.



#30 AR-1254-5  
 R.T.: 7.391 min  
 Delta R.T.: 0.001 min  
 Response: 387686  
 Conc: 125.37 ng/ml

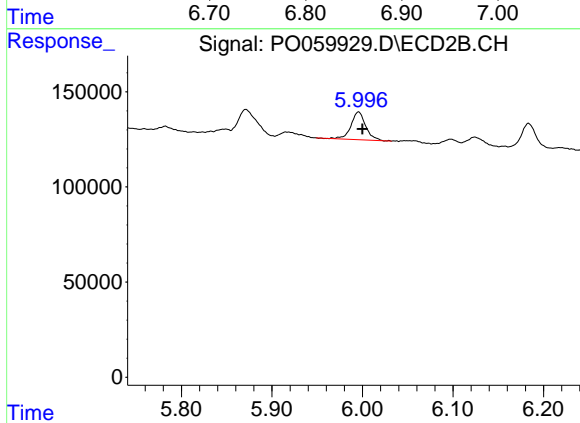


#30 AR-1254-5  
 R.T.: 6.505 min  
 Delta R.T.: -0.005 min  
 Response: 279234  
 Conc: 89.93 ng/ml

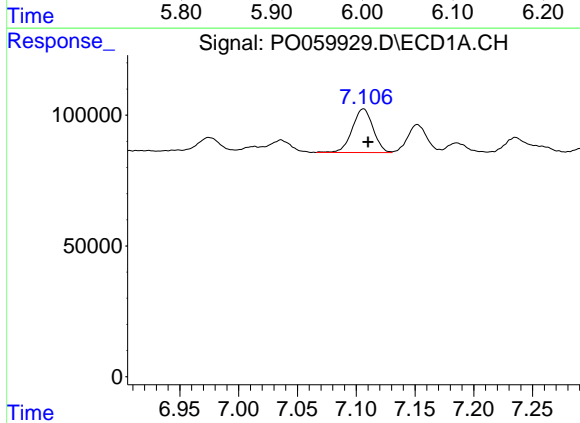


#31 AR-1260-1  
 R.T.: 6.851 min  
 Delta R.T.: 0.000 min  
 Response: 249668  
 Conc: 92.61 ng/ml

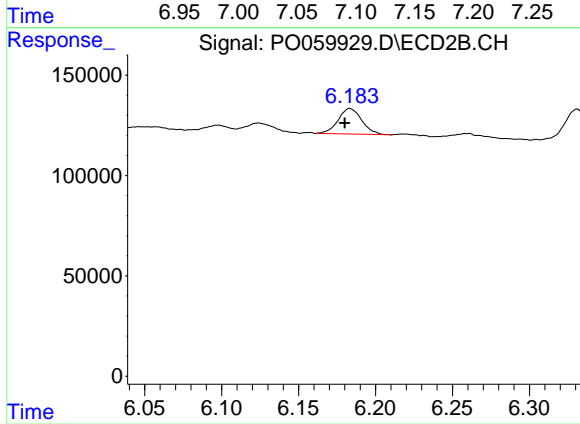
Instrument :  
 ECD\_O  
 ClientSampleId :  
 T9-12-13-S1-S4-(0-1.9)



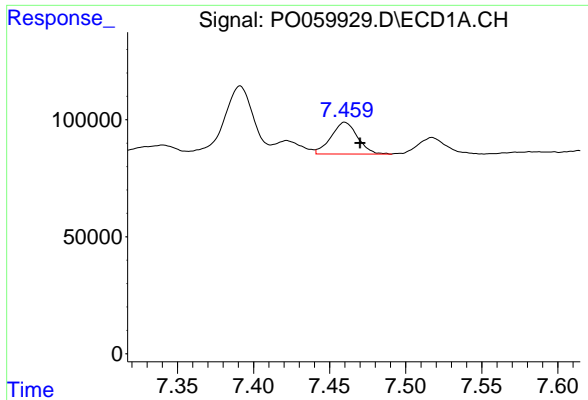
#31 AR-1260-1  
 R.T.: 5.996 min  
 Delta R.T.: -0.004 min  
 Response: 165469  
 Conc: 72.61 ng/ml



#32 AR-1260-2  
 R.T.: 7.106 min  
 Delta R.T.: -0.004 min  
 Response: 206686  
 Conc: 55.70 ng/ml



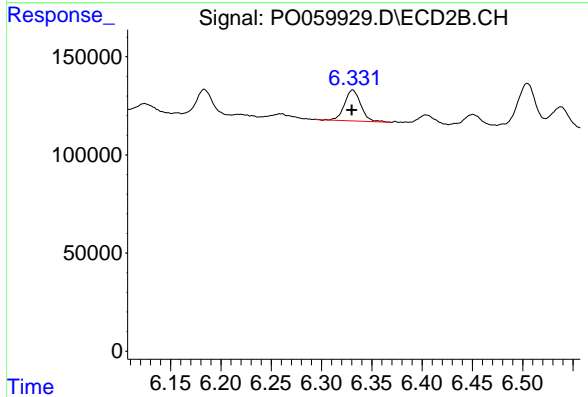
#32 AR-1260-2  
 R.T.: 6.183 min  
 Delta R.T.: 0.003 min  
 Response: 135926  
 Conc: 46.39 ng/ml



#33 AR-1260-3

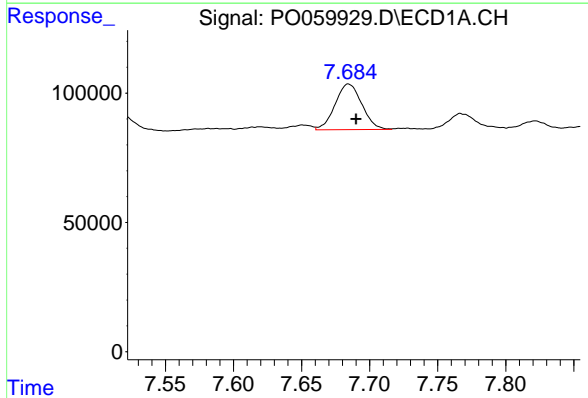
R.T.: 7.460 min  
 Delta R.T.: -0.010 min  
 Response: 163839  
 Conc: 50.01 ng/ml

**Instrument :**  
 ECD\_O  
**ClientSampleId :**  
 T9-12-13-S1-S4-(0-1.9)



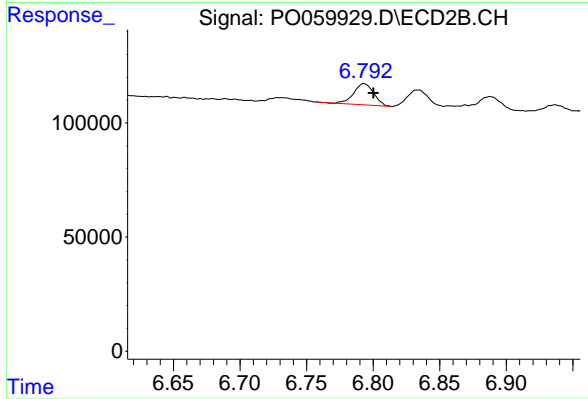
#33 AR-1260-3

R.T.: 6.331 min  
 Delta R.T.: 0.001 min  
 Response: 178005  
 Conc: 67.19 ng/ml



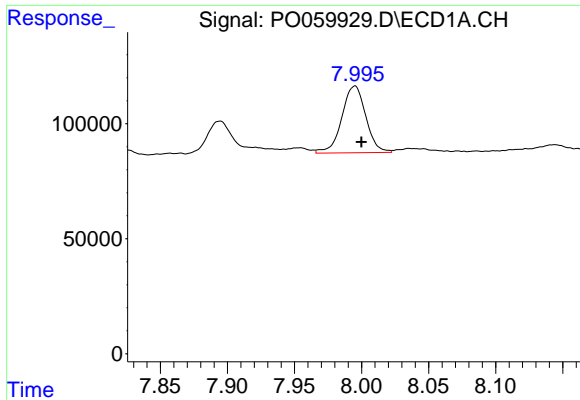
#34 AR-1260-4

R.T.: 7.685 min  
 Delta R.T.: -0.005 min  
 Response: 241365  
 Conc: 78.59 ng/ml



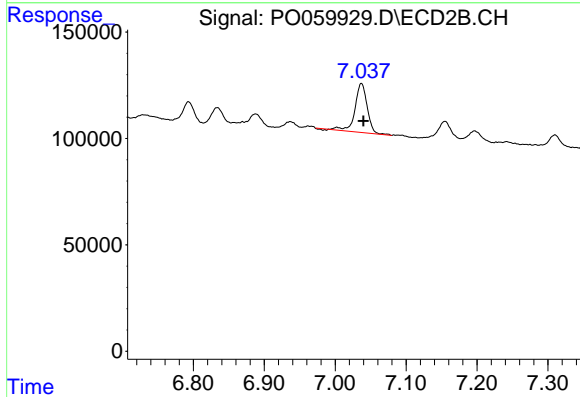
#34 AR-1260-4

R.T.: 6.793 min  
 Delta R.T.: -0.007 min  
 Response: 98137  
 Conc: 43.37 ng/ml

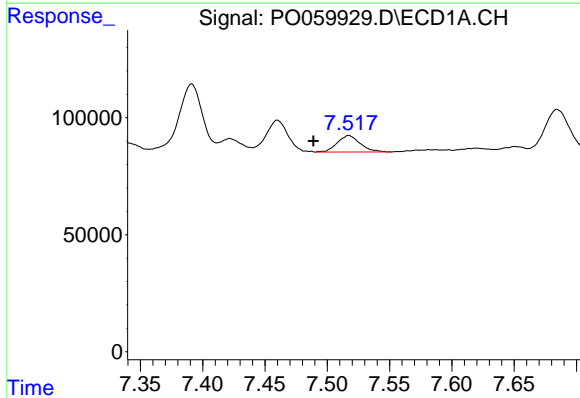


#35 AR-1260-5  
 R.T.: 7.995 min  
 Delta R.T.: -0.005 min  
 Response: 361123  
 Conc: 51.00 ng/ml

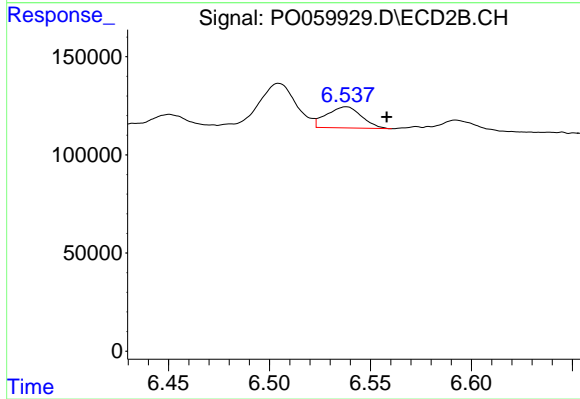
**Instrument :**  
 ECD\_O  
**ClientSampleId :**  
 T9-12-13-S1-S4-(0-1.9)



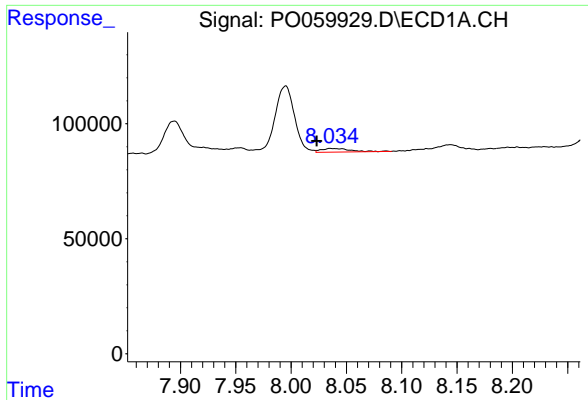
#35 AR-1260-5  
 R.T.: 7.037 min  
 Delta R.T.: -0.003 min  
 Response: 276932  
 Conc: 50.32 ng/ml



#36 AR-1262-1  
 R.T.: 7.517 min  
 Delta R.T.: 0.028 min  
 Response: 89659  
 Conc: 18.48 ng/ml



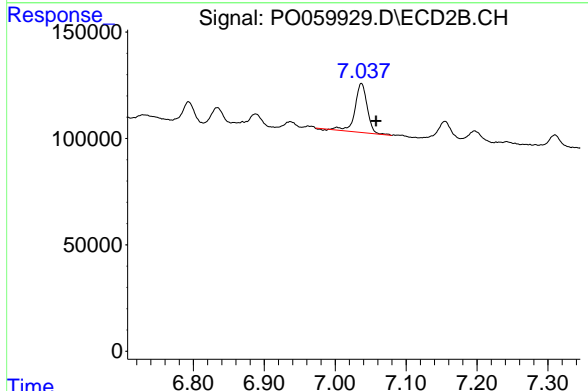
#36 AR-1262-1  
 R.T.: 6.538 min  
 Delta R.T.: -0.020 min  
 Response: 130027  
 Conc: 34.88 ng/ml



#37 AR-1262-2

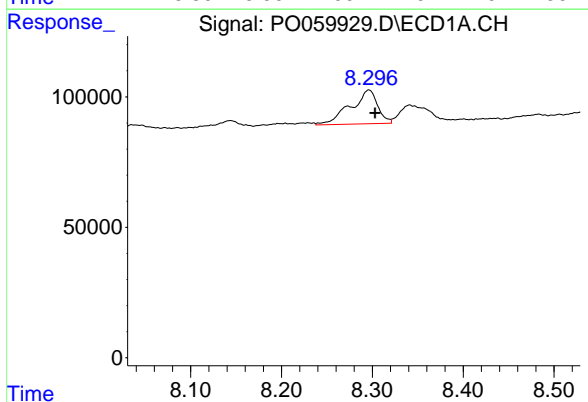
R.T.: 8.037 min  
 Delta R.T.: 0.014 min  
 Response: 28651  
 Conc: 3.71 ng/ml

**Instrument :**  
 ECD\_O  
**ClientSampleId :**  
 T9-12-13-S1-S4-(0-1.9)



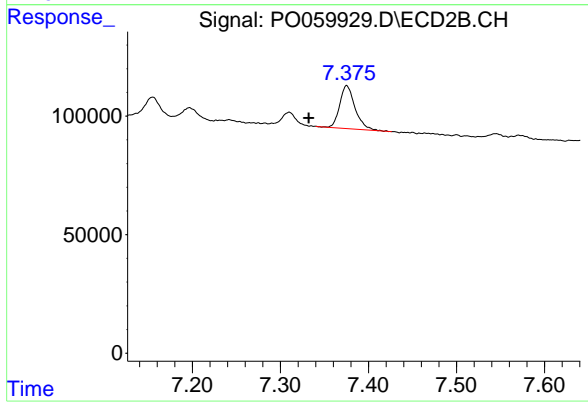
#37 AR-1262-2

R.T.: 7.037 min  
 Delta R.T.: -0.020 min  
 Response: 276932  
 Conc: 47.10 ng/ml



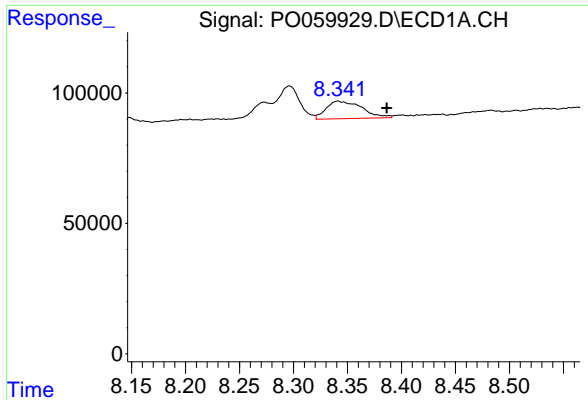
#38 AR-1262-3

R.T.: 8.296 min  
 Delta R.T.: -0.007 min  
 Response: 269156  
 Conc: 52.75 ng/ml



#38 AR-1262-3

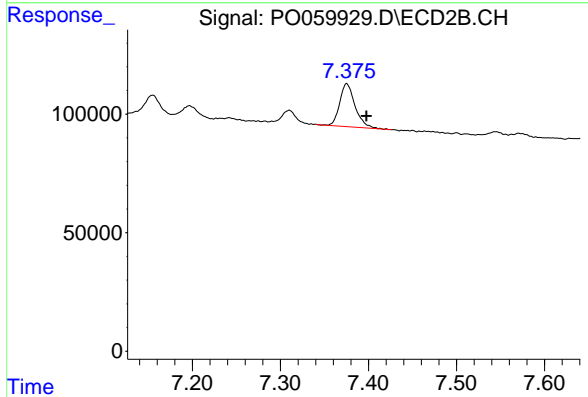
R.T.: 7.375 min  
 Delta R.T.: 0.043 min  
 Response: 221032  
 Conc: 86.99 ng/ml



#39 AR-1262-4

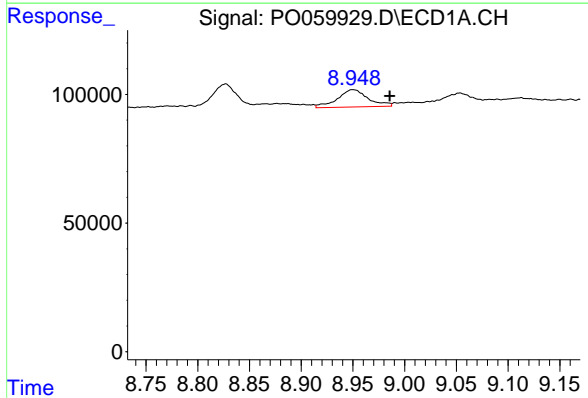
R.T.: 8.342 min  
 Delta R.T.: -0.044 min  
 Response: 154563  
 Conc: 40.10 ng/ml

Instrument :  
 ECD\_O  
 ClientSampleId :  
 T9-12-13-S1-S4-(0-1.9)



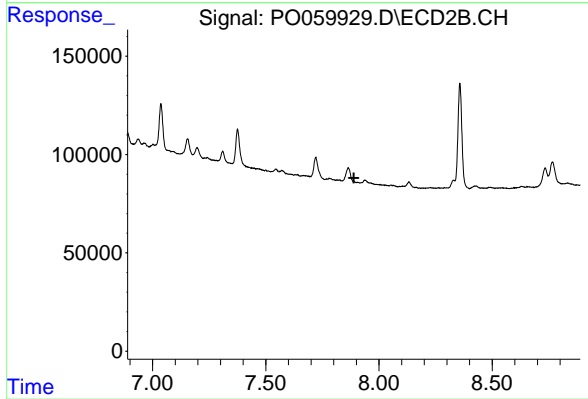
#39 AR-1262-4

R.T.: 7.375 min  
 Delta R.T.: -0.022 min  
 Response: 221032  
 Conc: 50.02 ng/ml



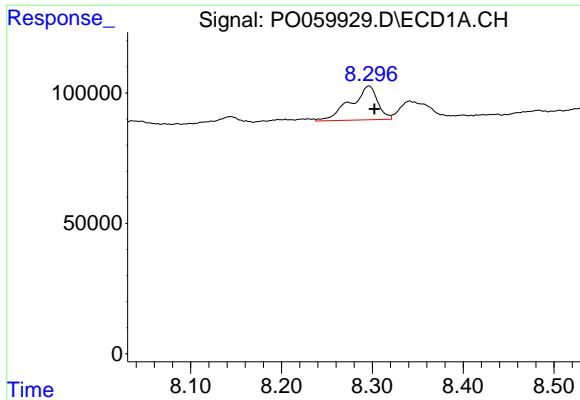
#40 AR-1262-5

R.T.: 8.950 min  
 Delta R.T.: -0.036 min  
 Response: 139225  
 Conc: 54.25 ng/ml



#40 AR-1262-5

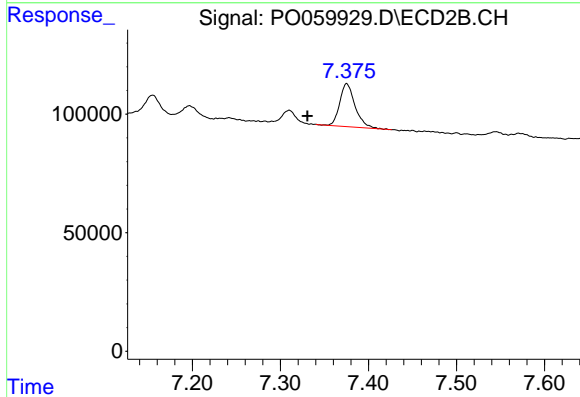
R.T.: 0.000 min  
 Exp R.T. : 7.889 min  
 Response: 0  
 Conc: N.D.



#41 AR-1268-1

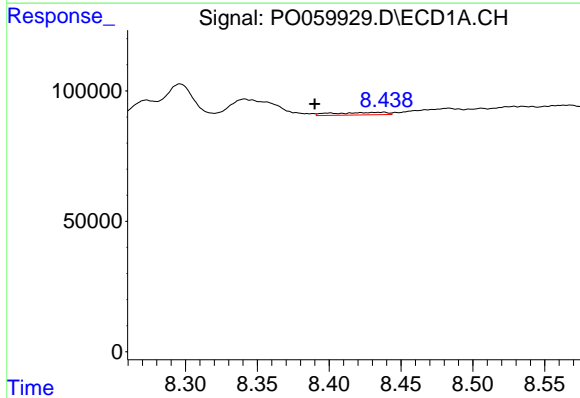
R.T.: 8.296 min  
 Delta R.T.: -0.006 min  
 Response: 269156  
 Conc: 28.60 ng/ml

Instrument :  
 ECD\_O  
 ClientSampleId :  
 T9-12-13-S1-S4-(0-1.9)



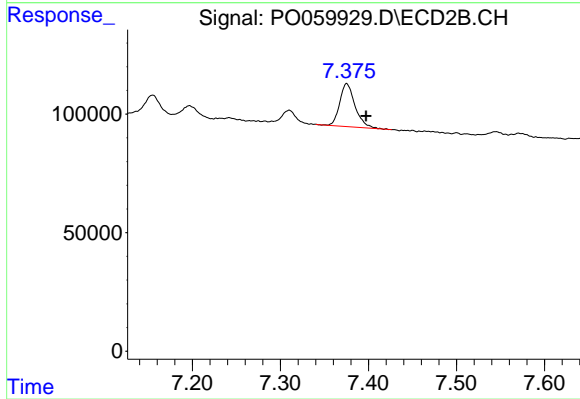
#41 AR-1268-1

R.T.: 7.375 min  
 Delta R.T.: 0.045 min  
 Response: 221032  
 Conc: 31.04 ng/ml



#42 AR-1268-2

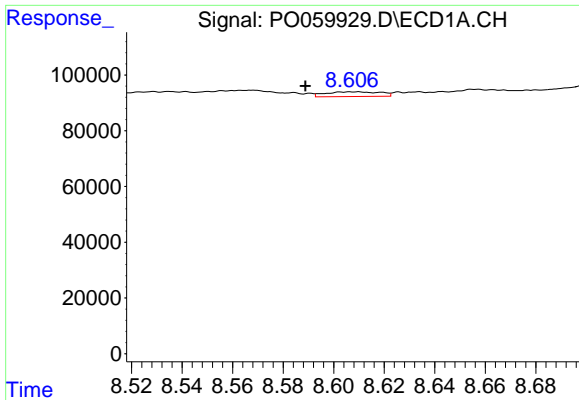
R.T.: 8.436 min  
 Delta R.T.: 0.046 min  
 Response: 25571  
 Conc: 3.24 ng/ml



#42 AR-1268-2

R.T.: 7.375 min  
 Delta R.T.: -0.022 min  
 Response: 221032  
 Conc: 34.28 ng/ml

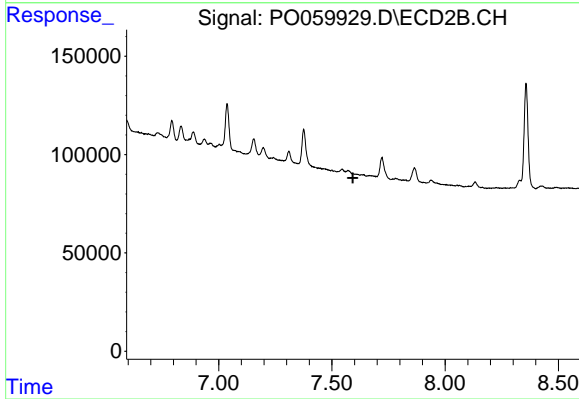




#43 AR-1268-3

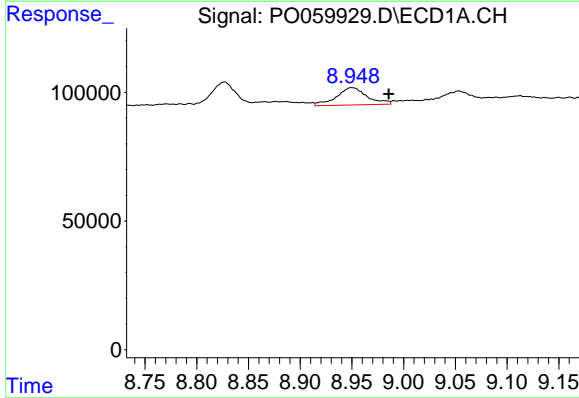
R.T.: 8.608 min  
 Delta R.T.: 0.019 min  
 Response: 25384  
 Conc: 3.60 ng/ml

Instrument :  
 ECD\_O  
 ClientSampleId :  
 T9-12-13-S1-S4-(0-1.9)



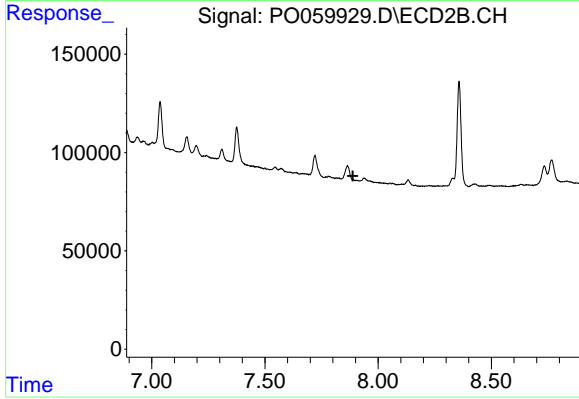
#43 AR-1268-3

R.T.: 0.000 min  
 Exp R.T. : 7.592 min  
 Response: 0  
 Conc: N.D.



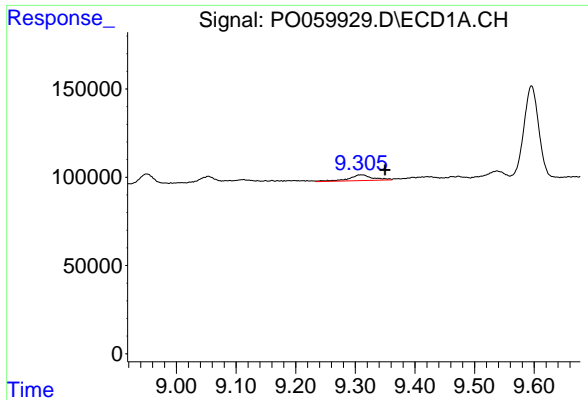
#44 AR-1268-4

R.T.: 8.950 min  
 Delta R.T.: -0.035 min  
 Response: 139225  
 Conc: 50.08 ng/ml



#44 AR-1268-4

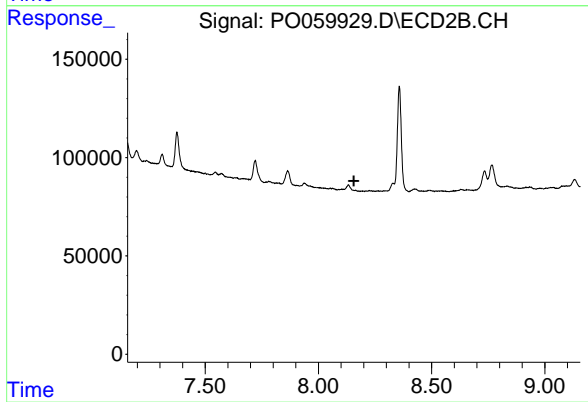
R.T.: 0.000 min  
 Exp R.T. : 7.888 min  
 Response: 0  
 Conc: N.D.



#45 AR-1268-5

R.T.: 9.310 min  
 Delta R.T.: -0.040 min  
 Response: 92521  
 Conc: 5.02 ng/ml

Instrument :  
 ECD\_O  
 ClientSampleId :  
 T9-12-13-S1-S4-(0-1.9)



#45 AR-1268-5

R.T.: 0.000 min  
 Exp R.T. : 8.157 min  
 Response: 0  
 Conc: N.D.