

Data Path : Z:\pestpcbsrv\HPCHEM1\ECD\_0\Data\P0082719\  
 Data File : P0059918.D  
 Signal(s) : Signal #1: ECD1A.CH Signal #2: ECD2B.CH  
 Acq On : 27 Aug 2019 23:54  
 Operator : SM/AJ  
 Sample : K4526-02  
 Misc :  
 ALS Vial : 38 Sample Multiplier: 1

**Instrument :**  
 ECD\_0  
**ClientSampleId :**  
 T9-12-13-D-(0-1.9)

**Manual Integrations**  
**APPROVED**  
 Ankita  
 8/28/2019 4:15:40 PM

Integration File signal 1: autoint1.e  
 Integration File signal 2: autoint2.e  
 Quant Time: Aug 28 04:34:02 2019  
 Quant Method : Z:\pestpcbsrv\HPCHEM1\ECD\_0\methods\P0081719.M  
 Quant Title : GC EXTRACTABLES  
 QLast Update : Sat Aug 17 03:09:44 2019  
 Response via : Initial Calibration  
 Integrator: ChemStation 6890 Scale Mode: Small noise peaks clipped

Volume Inj. : 2 µl  
 Signal #1 Phase : ZB-MR1 Signal #2 Phase: ZB-MR2  
 Signal #1 Info : 30Mx0.32mmx 0.50µ Signal #2 Info : 30M x 0.32mm x 0.25µm

Compound	RT#1	RT#2	Resp#1	Resp#2	ng/ml	ng/ml
-----						
System Monitoring Compounds						
1) SA Tetrachlo...	4.125	3.501	1174554	960643	33.547	26.688
2) SA Decachlor...	9.595	8.358	1130881	881241	21.257	21.856
Target Compounds						
31) L7 AR-1260-1	6.850	5.996	53950	70053	20.012m	30.740m#
32) L7 AR-1260-2	7.106	6.182	50668	30952	13.655m	10.564m
33) L7 AR-1260-3	7.459	6.329	65079	44714	19.863m	16.879m
34) L7 AR-1260-4	7.684	6.792	71607	37671	23.315m	16.649m#
35) L7 AR-1260-5	7.994	7.035	128716	105137	18.178	19.104m
-----						

(f)=RT Delta > 1/2 Window (#)=Amounts differ by > 25% (m)=manual int.

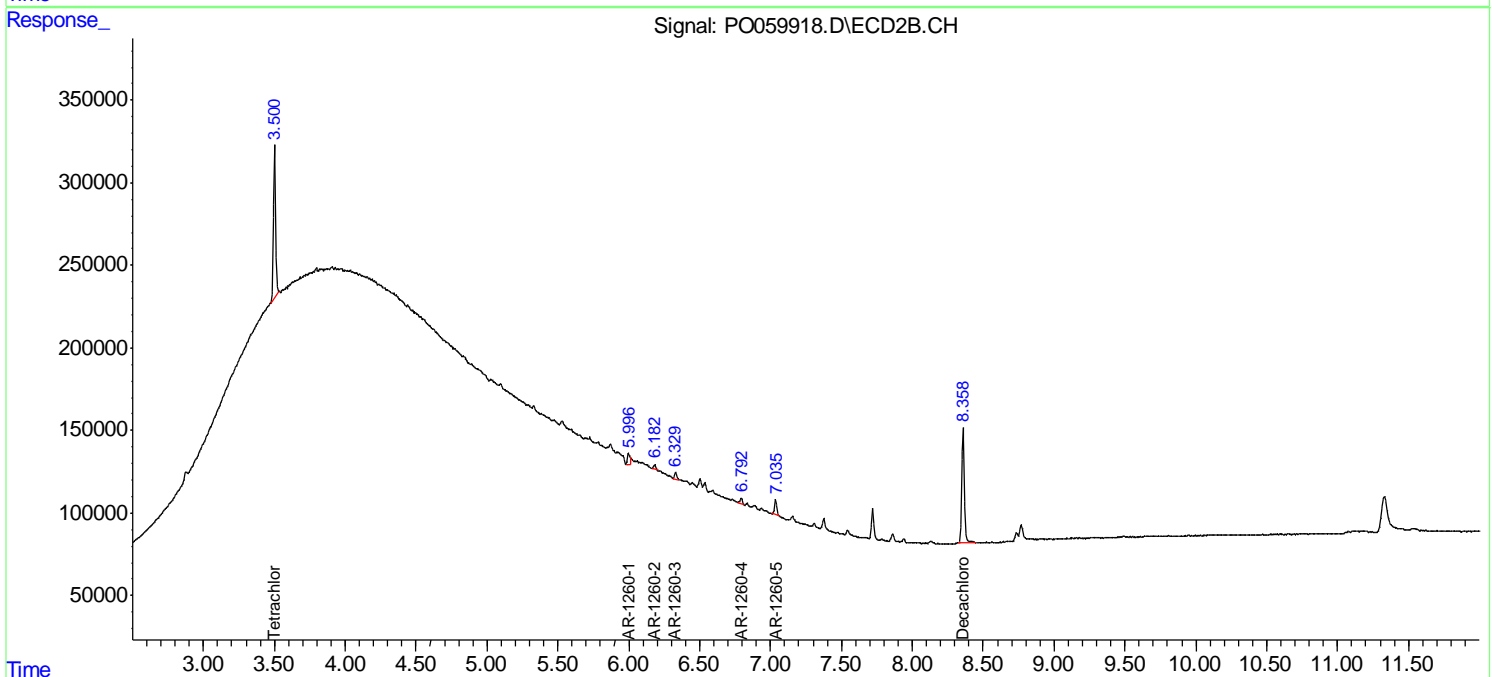
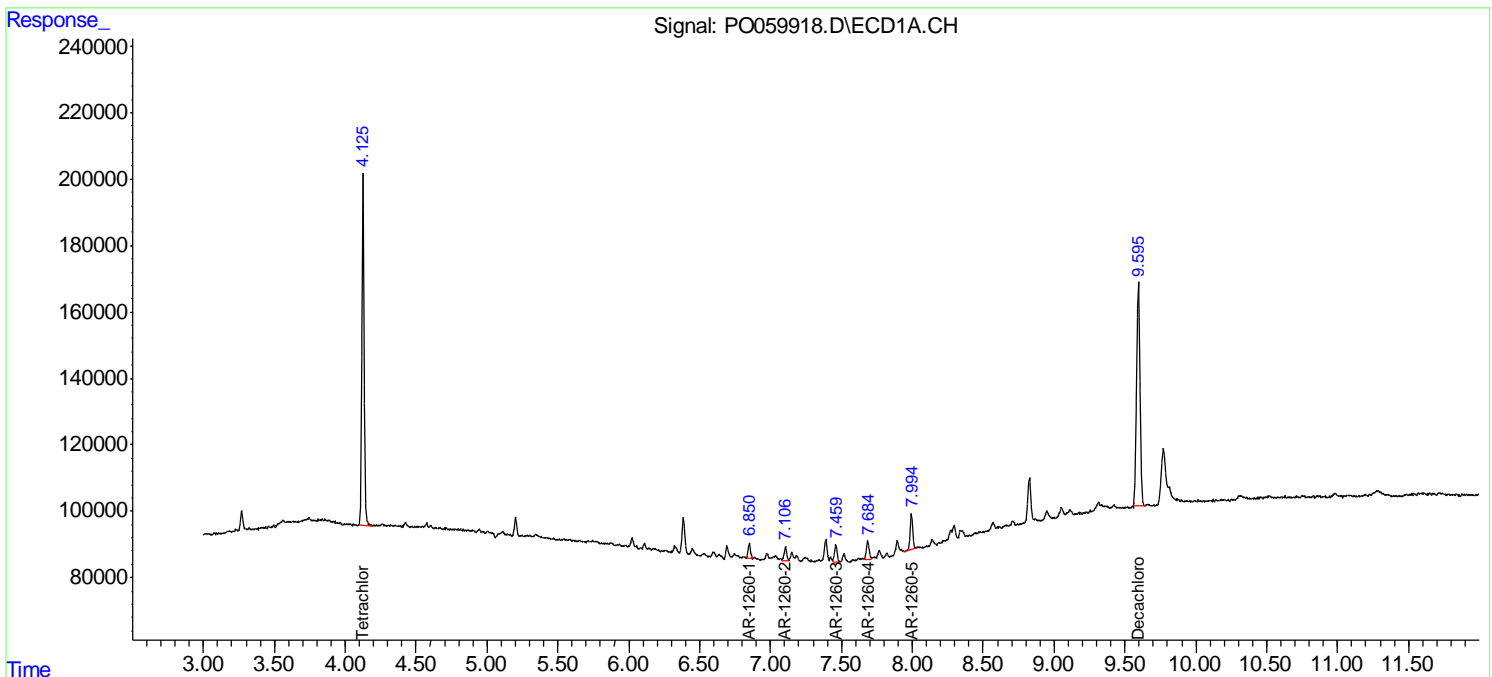
Data Path : Z:\pestpcbsrv\HPCHEM1\ECD\_O\Data\PO082719\  
 Data File : PO059918.D  
 Signal(s) : Signal #1: ECD1A.CH Signal #2: ECD2B.CH  
 Acq On : 27 Aug 2019 23:54  
 Operator : SM/AJ  
 Sample : K4526-02  
 Misc :  
 ALS Vial : 38 Sample Multiplier: 1

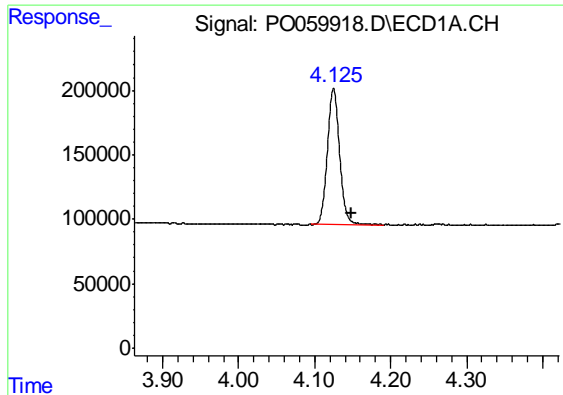
**Instrument :**  
 ECD\_O  
**Client Sampled :**  
 T9-12-13-D-(0-1.9)

**Manual Integrations**  
**APPROVED**  
 Ankita  
 8/28/2019 4:15:40 PM

Integration File signal 1: autoint1.e  
 Integration File signal 2: autoint2.e  
 Quant Time: Aug 28 04:34:02 2019  
 Quant Method : Z:\pestpcbsrv\HPCHEM1\ECD\_O\methods\PO081719.M  
 Quant Title : GC EXTRACTABLES  
 QLast Update : Sat Aug 17 03:09:44 2019  
 Response via : Initial Calibration  
 Integrator: ChemStation 6890 Scale Mode: Small noise peaks clipped

Volume Inj. : 2 µl  
 Signal #1 Phase : ZB-MR1 Signal #2 Phase: ZB-MR2  
 Signal #1 Info : 30Mx0.32mmx 0.50µ Signal #2 Info : 30M x 0.32mm x 0.25µm





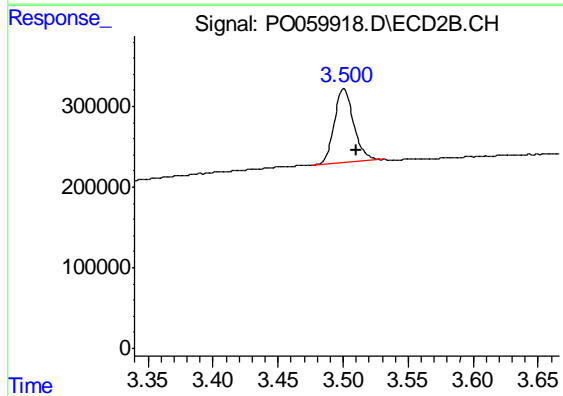
#1 Tetrachloro-m-xylene

R.T.: 4.125 min  
 Delta R.T.: -0.024 min  
 Response: 1174554  
 Conc: 33.55 ng/ml

Instrument :  
 ECD\_O  
 ClientSampled :  
 T9-12-13-D-(0-1.9)

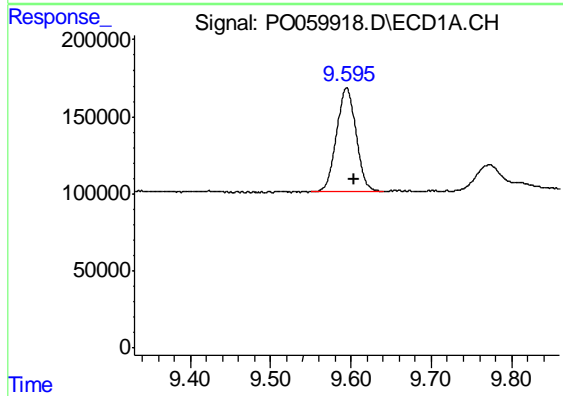
Manual Integrations  
 APPROVED

Ankita  
 8/28/2019 4:15:40 PM



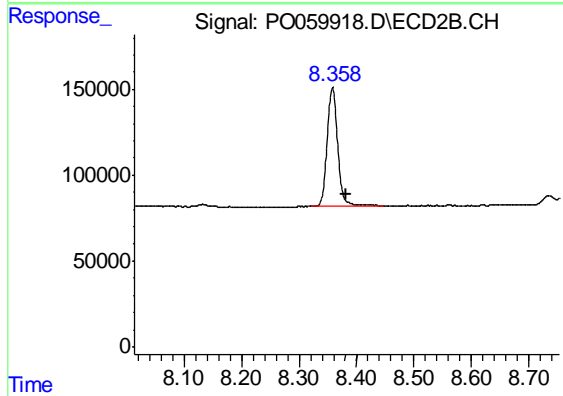
#1 Tetrachloro-m-xylene

R.T.: 3.501 min  
 Delta R.T.: -0.009 min  
 Response: 960643  
 Conc: 26.69 ng/ml



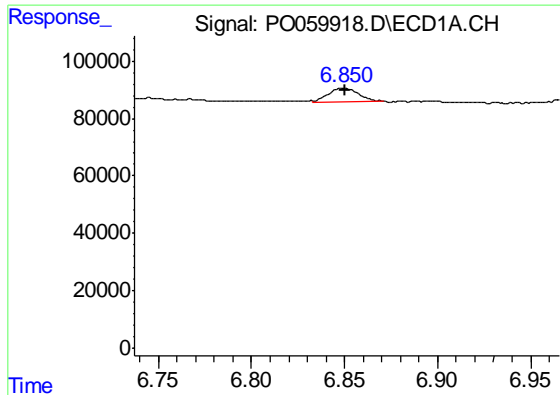
#2 Decachlorobiphenyl

R.T.: 9.595 min  
 Delta R.T.: -0.008 min  
 Response: 1130881  
 Conc: 21.26 ng/ml



#2 Decachlorobiphenyl

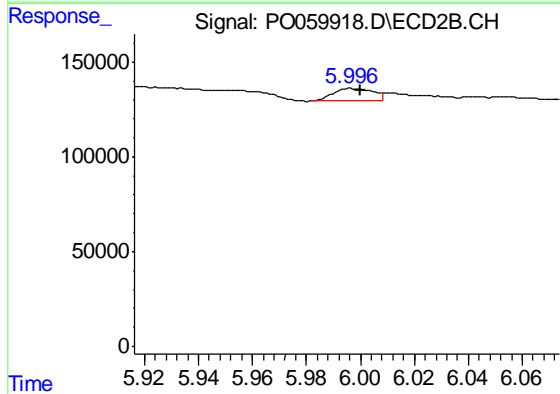
R.T.: 8.358 min  
 Delta R.T.: -0.025 min  
 Response: 881241  
 Conc: 21.86 ng/ml



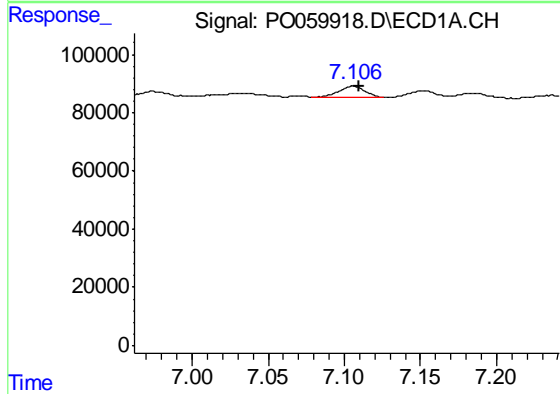
#31 AR-1260-1  
 R.T.: 6.850 min  
 Delta R.T.: 0.000 min  
 Response: 53950  
 Conc: 20.01 ng/ml m

**Instrument :**  
 ECD\_O  
**ClientSampled :**  
 T9-12-13-D-(0-1.9)

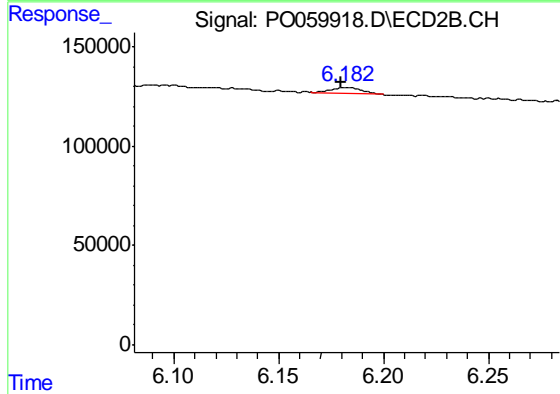
**Manual Integrations**  
**APPROVED**  
 Ankita  
 8/28/2019 4:15:40 PM



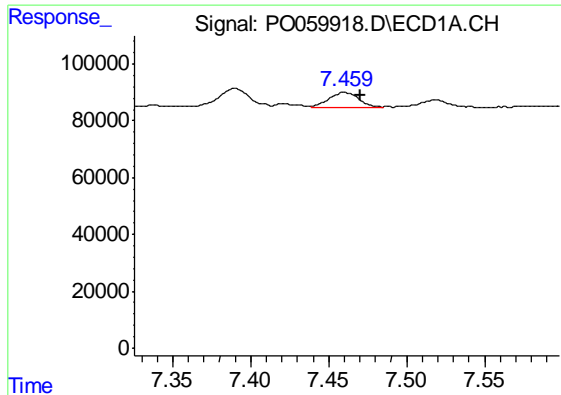
#31 AR-1260-1  
 R.T.: 5.996 min  
 Delta R.T.: -0.004 min  
 Response: 70053  
 Conc: 30.74 ng/ml m



#32 AR-1260-2  
 R.T.: 7.106 min  
 Delta R.T.: -0.004 min  
 Response: 50668  
 Conc: 13.66 ng/ml m



#32 AR-1260-2  
 R.T.: 6.182 min  
 Delta R.T.: 0.002 min  
 Response: 30952  
 Conc: 10.56 ng/ml m



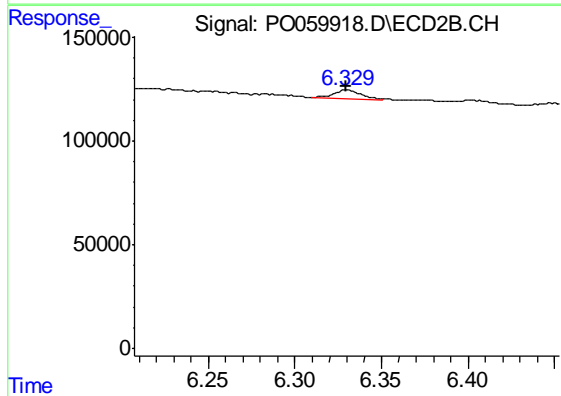
#33 AR-1260-3

R.T.: 7.459 min  
 Delta R.T.: -0.011 min  
 Response: 65079  
 Conc: 19.86 ng/ml m

Instrument :  
 ECD\_O  
 ClientSampleId :  
 T9-12-13-D-(0-1.9)

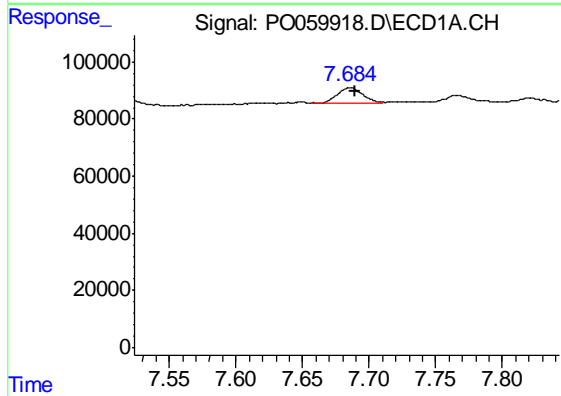
Manual Integrations  
 APPROVED

Ankita  
 8/28/2019 4:15:40 PM



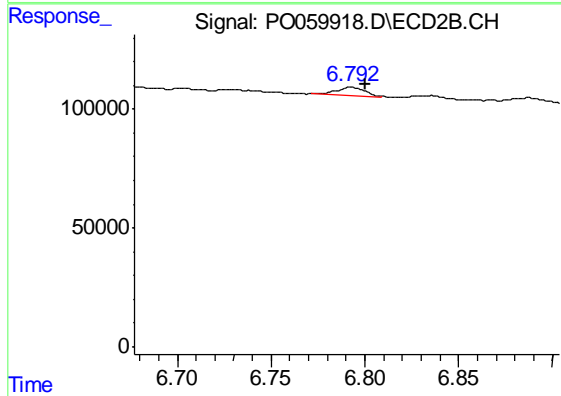
#33 AR-1260-3

R.T.: 6.329 min  
 Delta R.T.: -0.001 min  
 Response: 44714  
 Conc: 16.88 ng/ml m



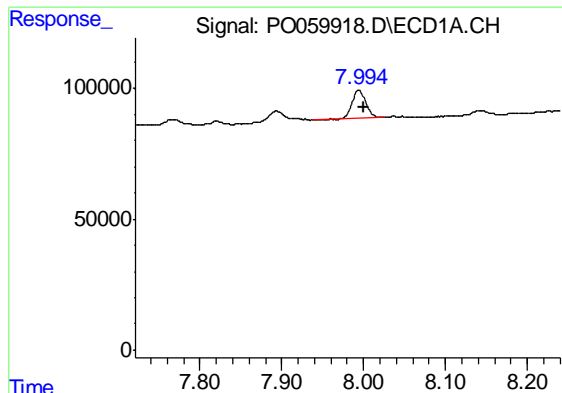
#34 AR-1260-4

R.T.: 7.684 min  
 Delta R.T.: -0.006 min  
 Response: 71607  
 Conc: 23.31 ng/ml m



#34 AR-1260-4

R.T.: 6.792 min  
 Delta R.T.: -0.008 min  
 Response: 37671  
 Conc: 16.65 ng/ml m



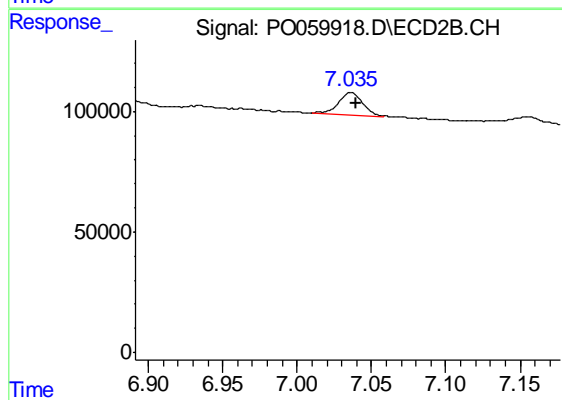
#35 AR-1260-5

R.T.: 7.994 min  
Delta R.T.: -0.006 min  
Response: 128716  
Conc: 18.18 ng/ml

Instrument :  
ECD\_O  
ClientSampleId :  
T9-12-13-D-(0-1.9)

Manual Integrations  
APPROVED

Ankita  
8/28/2019 4:15:40 PM



#35 AR-1260-5

R.T.: 7.035 min  
Delta R.T.: -0.005 min  
Response: 105137  
Conc: 19.10 ng/ml m