

Data Path : Z:\pestpcbsrv\HPCHEM1\ECD\_0\Data\P0082720\  
 Data File : P0070902.D  
 Signal(s) : Signal #1: ECD1A.CH Signal #2: ECD2B.CH  
 Acq On : 27 Aug 2020 8:46  
 Operator : DD\AJ  
 Sample : I.BLK  
 Misc :  
 ALS Vial : 2 Sample Multiplier: 1

Instrument :  
 ECD\_0  
 ClientSampleId :  
 I.BLK

Integration File signal 1: autoint1.e  
 Integration File signal 2: autoint2.e  
 Quant Time: Aug 27 12:57:02 2020  
 Quant Method : Z:\pestpcbsrv\HPCHEM1\ECD\_0\methods\P0082020.M  
 Quant Title : GC EXTRACTABLES  
 QLast Update : Fri Aug 21 04:17:00 2020  
 Response via : Initial Calibration  
 Integrator: ChemStation 6890 Scale Mode: Small noise peaks clipped

Volume Inj. : 2 µl  
 Signal #1 Phase : ZB-MR1 Signal #2 Phase: ZB-MR2  
 Signal #1 Info : 30Mx0.32mmx 0.50µ Signal #2 Info : 30M x 0.32mm x 0.25µm

Compound	RT#1	RT#2	Resp#1	Resp#2	ng/ml	ng/ml
-----						
System Monitoring Compounds						
1) SA Tetrachlo...	4.373	3.556	1518340	838668	21.796	20.833
2) SA Decachlor...	10.001	8.741	1581062	938914	16.888	16.674

Target Compounds

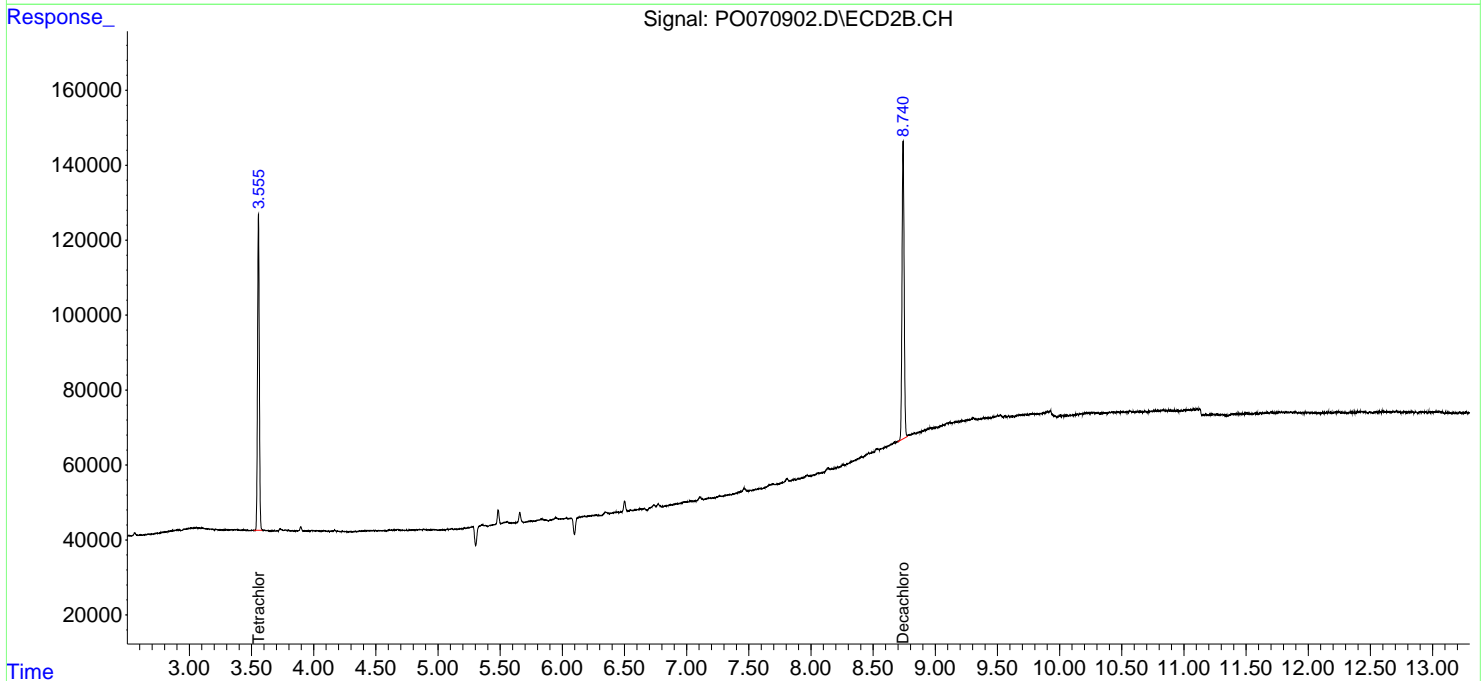
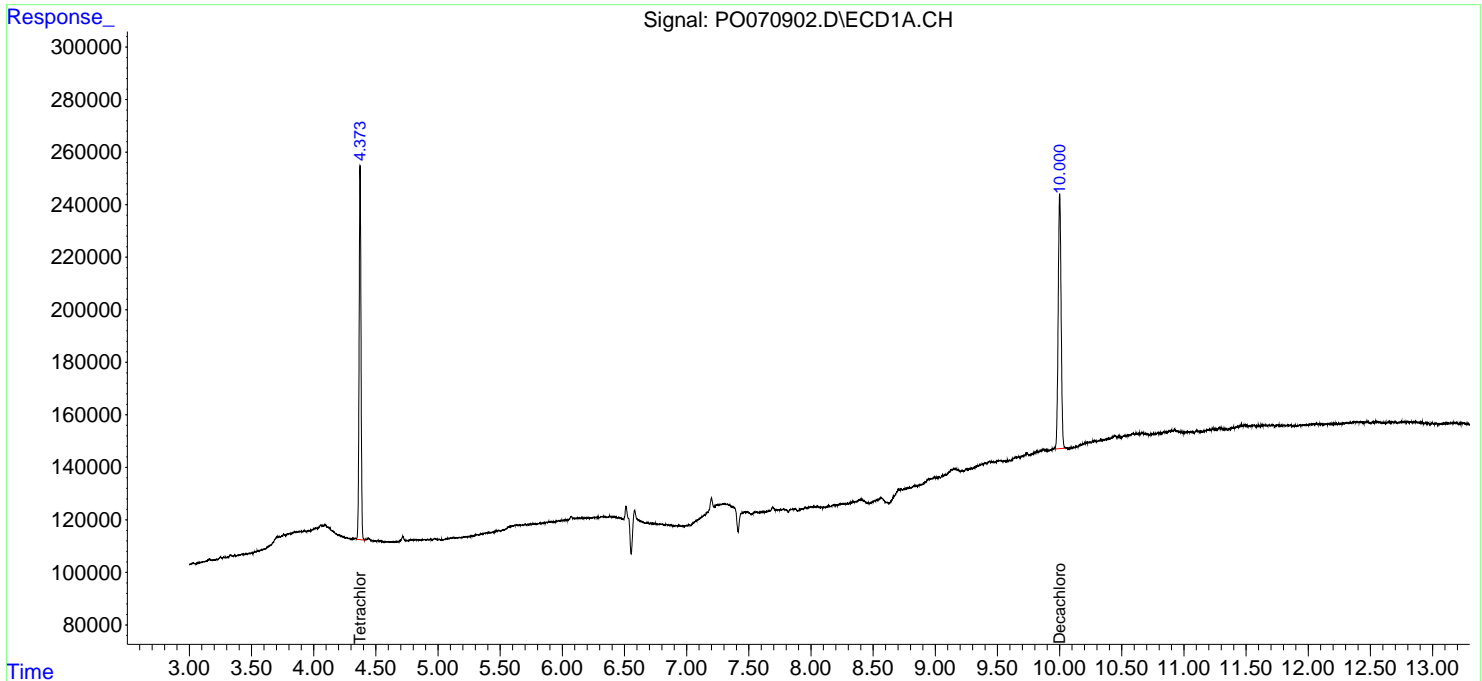
(f)=RT Delta > 1/2 Window (#)=Amounts differ by > 25% (m)=manual int.

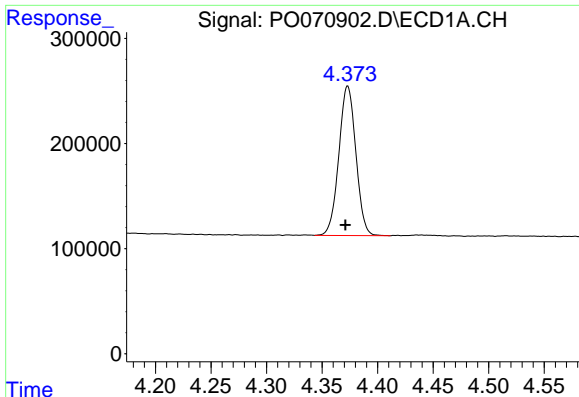
Data Path : Z:\pestpcbsrv\HPCHEM1\ECD\_0\Data\P0082720\  
 Data File : P0070902.D  
 Signal(s) : Signal #1: ECD1A.CH Signal #2: ECD2B.CH  
 Acq On : 27 Aug 2020 8:46  
 Operator : DD\AJ  
 Sample : I.BLK  
 Misc :  
 ALS Vial : 2 Sample Multiplier: 1

Instrument :  
 ECD\_O  
 ClientSampled :  
 I.BLK

Integration File signal 1: autoint1.e  
 Integration File signal 2: autoint2.e  
 Quant Time: Aug 27 12:57:02 2020  
 Quant Method : Z:\pestpcbsrv\HPCHEM1\ECD\_0\methods\P0082020.M  
 Quant Title : GC EXTRACTABLES  
 QLast Update : Fri Aug 21 04:17:00 2020  
 Response via : Initial Calibration  
 Integrator: ChemStation 6890 Scale Mode: Small noise peaks clipped

Volume Inj. : 2 µl  
 Signal #1 Phase : ZB-MR1 Signal #2 Phase: ZB-MR2  
 Signal #1 Info : 30Mx0.32mmx 0.50µ Signal #2 Info : 30M x 0.32mm x 0.25µm

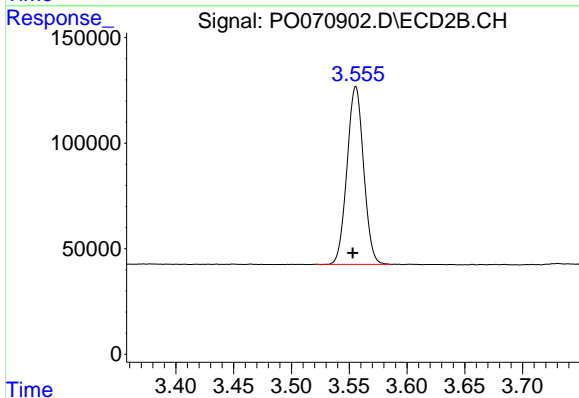




#1 Tetrachloro-m-xylene

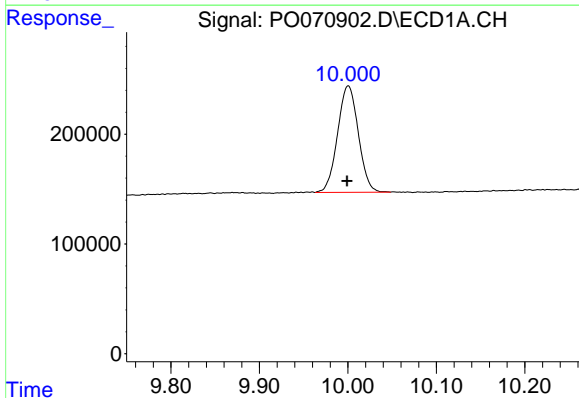
R.T.: 4.373 min  
 Delta R.T.: 0.002 min  
 Response: 1518340  
 Conc: 21.80 ng/ml

Instrument :  
 ECD\_O  
 ClientSampleId :  
 I.BLK



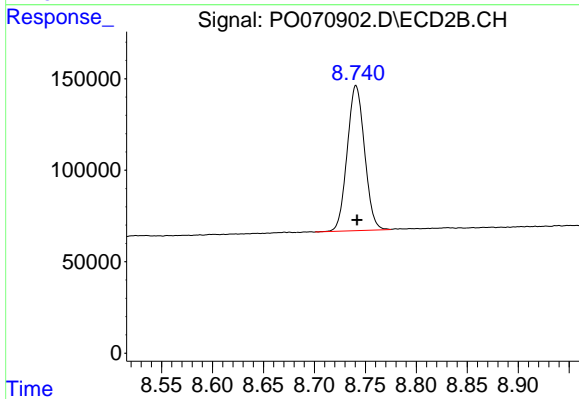
#1 Tetrachloro-m-xylene

R.T.: 3.556 min  
 Delta R.T.: 0.003 min  
 Response: 838668  
 Conc: 20.83 ng/ml



#2 Decachlorobiphenyl

R.T.: 10.001 min  
 Delta R.T.: 0.002 min  
 Response: 1581062  
 Conc: 16.89 ng/ml



#2 Decachlorobiphenyl

R.T.: 8.741 min  
 Delta R.T.: -0.001 min  
 Response: 938914  
 Conc: 16.67 ng/ml