

Data Path : Z:\pestpcbsrv\HPCHEM1\ECD\_0\Data\P0082720\  
 Data File : P0070907.D  
 Signal(s) : Signal #1: ECD1A.CH Signal #2: ECD2B.CH  
 Acq On : 27 Aug 2020 11:48  
 Operator : DD\AJ  
 Sample : L3498-01  
 Misc :  
 ALS Vial : 5 Sample Multiplier: 1

Instrument :  
 ECD\_0  
 ClientSampleId :  
 HR-06-082620

Integration File signal 1: autoint1.e  
 Integration File signal 2: autoint2.e  
 Quant Time: Aug 27 12:59:11 2020  
 Quant Method : Z:\pestpcbsrv\HPCHEM1\ECD\_0\methods\P0082020.M  
 Quant Title : GC EXTRACTABLES  
 QLast Update : Fri Aug 21 04:17:00 2020  
 Response via : Initial Calibration  
 Integrator: ChemStation 6890 Scale Mode: Small noise peaks clipped

Volume Inj. : 2 µl  
 Signal #1 Phase : ZB-MR1 Signal #2 Phase: ZB-MR2  
 Signal #1 Info : 30Mx0.32mmx 0.50µ Signal #2 Info : 30M x 0.32mm x 0.25µm

Compound	RT#1	RT#2	Resp#1	Resp#2	ng/ml	ng/ml
-----						
System Monitoring Compounds						
1) SA Tetrachlo...	4.385	3.559	2048686	1102781	29.409	27.394
2) SA Decachlor...	10.011	8.744	2025617	1109246	21.636	19.698

Target Compounds

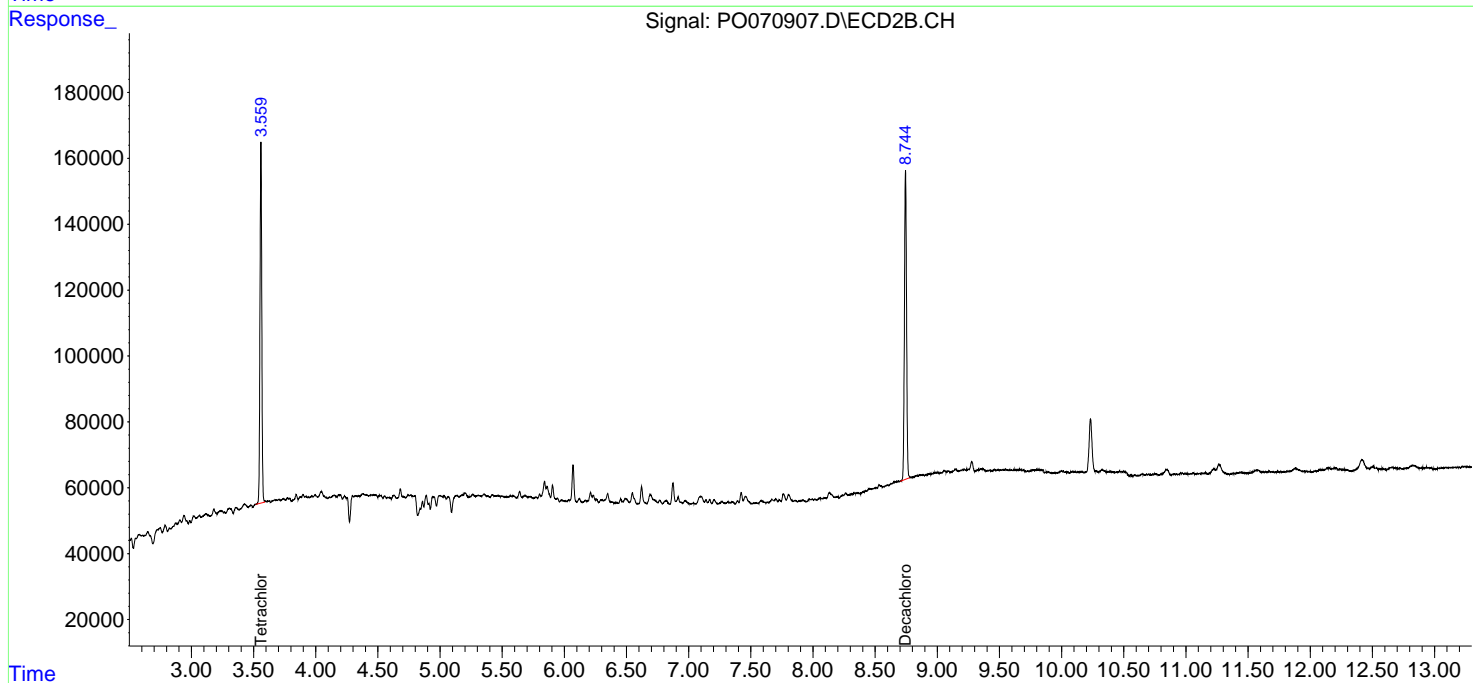
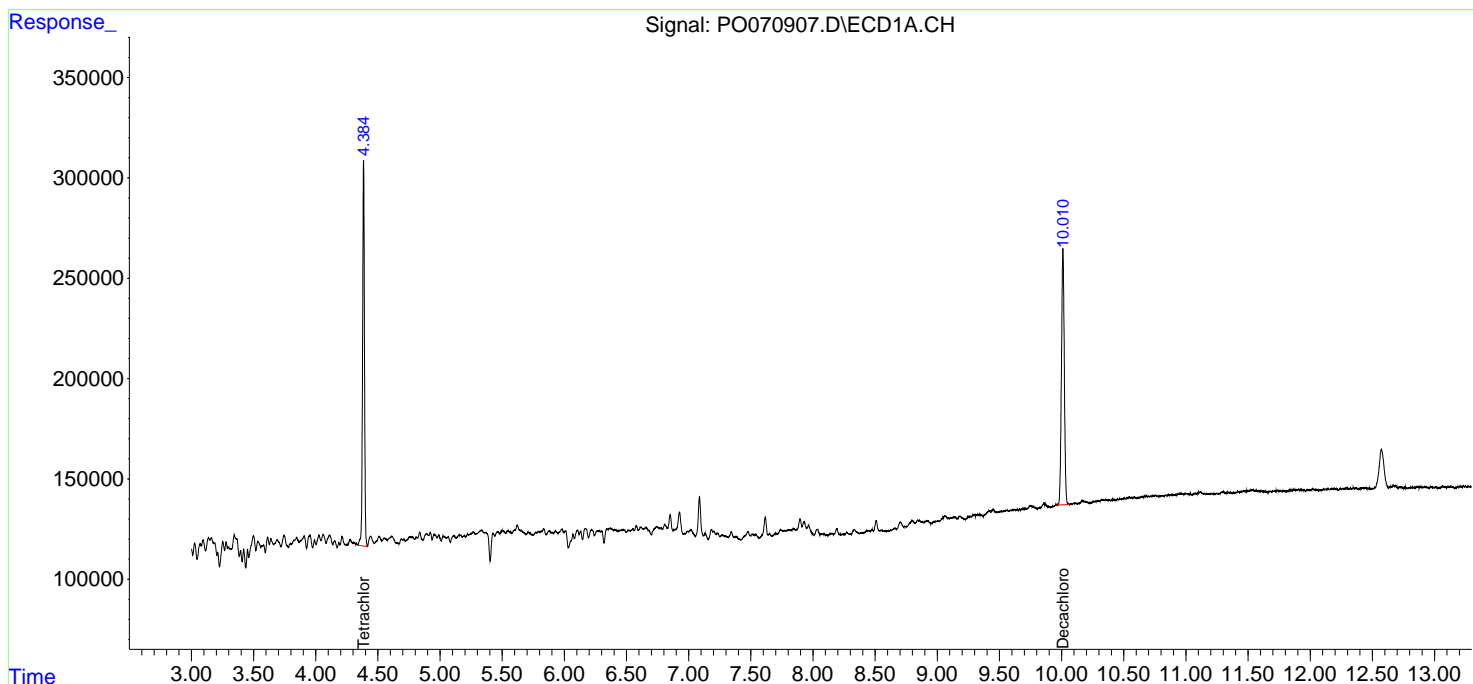
(f)=RT Delta > 1/2 Window (#)=Amounts differ by > 25% (m)=manual int.

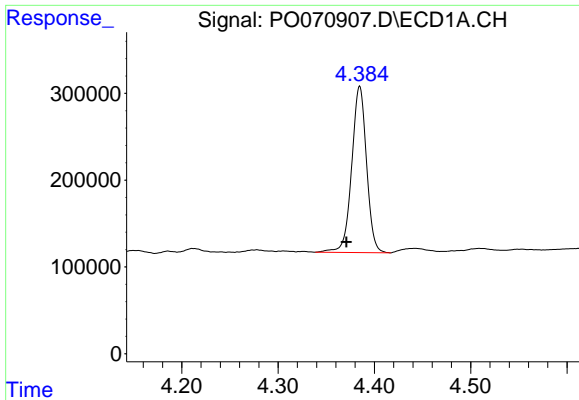
Data Path : Z:\pestpcbsrv\HPCHEM1\ECD\_O\Data\PO082720\  
 Data File : PO070907.D  
 Signal(s) : Signal #1: ECD1A.CH Signal #2: ECD2B.CH  
 Acq On : 27 Aug 2020 11:48  
 Operator : DD\AJ  
 Sample : L3498-01  
 Misc :  
 ALS Vial : 5 Sample Multiplier: 1

Instrument :  
 ECD\_O  
 ClientSampled :  
 HR-06-082620

Integration File signal 1: autoint1.e  
 Integration File signal 2: autoint2.e  
 Quant Time: Aug 27 12:59:11 2020  
 Quant Method : Z:\pestpcbsrv\HPCHEM1\ECD\_O\methods\PO082020.M  
 Quant Title : GC EXTRACTABLES  
 QLast Update : Fri Aug 21 04:17:00 2020  
 Response via : Initial Calibration  
 Integrator: ChemStation 6890 Scale Mode: Small noise peaks clipped

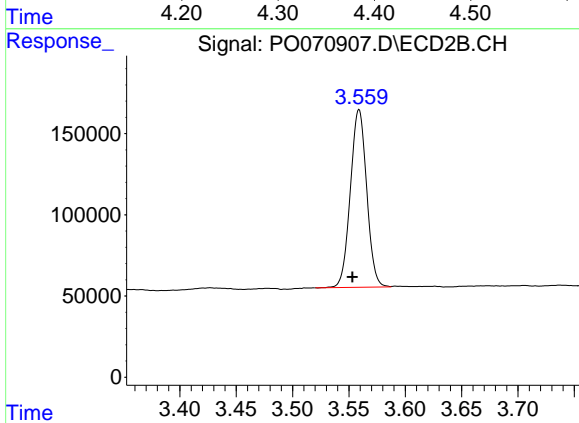
Volume Inj. : 2 µl  
 Signal #1 Phase : ZB-MR1 Signal #2 Phase: ZB-MR2  
 Signal #1 Info : 30Mx0.32mmx 0.50µ Signal #2 Info : 30M x 0.32mm x 0.25µm



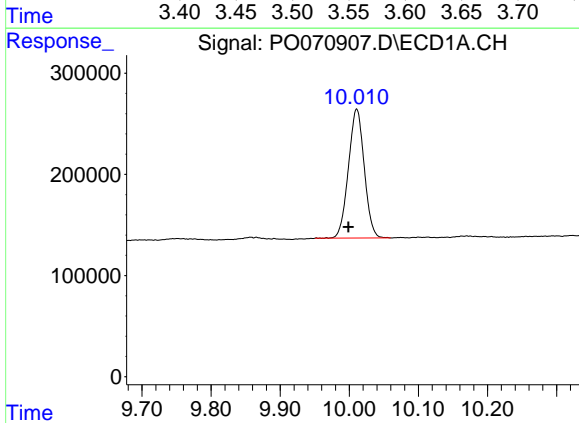


#1 Tetrachloro-m-xylene  
 R.T.: 4.385 min  
 Delta R.T.: 0.014 min  
 Response: 2048686  
 Conc: 29.41 ng/ml

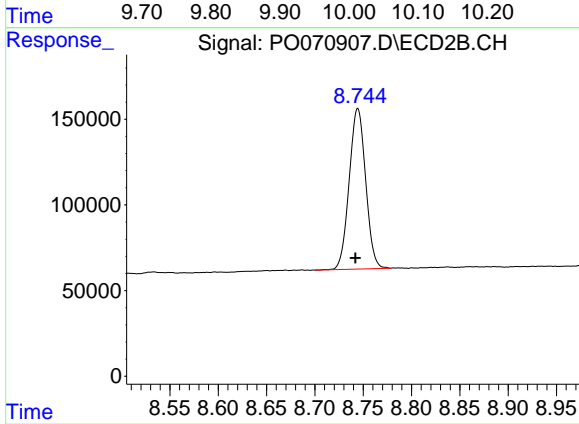
Instrument :  
 ECD\_O  
 ClientSampleId :  
 HR-06-082620



#1 Tetrachloro-m-xylene  
 R.T.: 3.559 min  
 Delta R.T.: 0.006 min  
 Response: 1102781  
 Conc: 27.39 ng/ml



#2 Decachlorobiphenyl  
 R.T.: 10.011 min  
 Delta R.T.: 0.012 min  
 Response: 2025617  
 Conc: 21.64 ng/ml



#2 Decachlorobiphenyl  
 R.T.: 8.744 min  
 Delta R.T.: 0.002 min  
 Response: 1109246  
 Conc: 19.70 ng/ml