

Data Path : Z:\pestpcbsrv\HPCHEM1\ECD O\Data\PO082818\  
 Data File : PO048590.D  
 Signal(s) : Signal #1: ECD1A.CH Signal #2: ECD2B.CH  
 Acq On : 28 Aug 2018 12:02  
 Operator : SM/SJ  
 Sample : PB112405BSD  
 Misc :  
 ALS Vial : 9 Sample Multiplier: 1

Instrument :  
 ECD\_O  
 ClientSampled :

Integration File signal 1: autoint1.e  
 Integration File signal 2: autoint2.e  
 Quant Time: Aug 29 02:07:10 2018  
 Quant Method : Z:\pestpcbsrv\HPCHEM1\ECD\_O\methods\PO082418.M  
 Quant Title : GC EXTRACTABLES  
 QLast Update : Fri Aug 24 08:17:51 2018  
 Response via : Initial Calibration  
 Integrator: ChemStation 6890 Scale Mode: Small noise peaks clipped

Volume Inj. : 2 ul  
 Signal #1 Phase : ZB-MR1 Signal #2 Phase: ZB-MR2  
 Signal #1 Info : 30Mx0.32mmx 0.50µ Signal #2 Info : 30M x 0.32mm x 0.25µm

Compound	RT#1	RT#2	Resp#1	Resp#2	ng/ml	ng/ml
-----						
System Monitoring Compounds						
1) SA Tetrachlo...	4.379	3.621	4801807	5919392	25.349	21.865
2) SA Decachlor...	10.059	8.596	3544487	3257549	20.584	19.451
Target Compounds						
3) L1 AR-1016-1	5.086	4.291	270328	640666	56.684	106.916 #
4) L1 AR-1016-2	5.280	4.702	262808	493620	56.046	56.194
5) L1 AR-1016-3	5.547	4.719	407169	771207	59.839	60.247
6) L1 AR-1016-4	5.631	4.776	322656	453666	53.074	55.317
7) L1 AR-1016-5	6.023	5.149	278544	398374	55.776	53.896
9) L2 AR-1221-2	0.000	3.920	0	84163	N.D.	43.748 #
10) L2 AR-1221-3	4.754	3.995	296760	186316	59.819	29.880 #
11) L3 AR-1232-1	5.569	4.482	564726	397287	125.682	136.128
12) L3 AR-1232-2	5.729	4.719	242802	771207	106.873	128.791
13) L3 AR-1232-3	5.818	4.977	247688	289460	147.303	110.135 #
14) L3 AR-1232-4	6.399	5.296	272049	474889	167.961	171.180
15) L3 AR-1232-5	6.461	5.524	35839	270534	15.232	87.888 #
16) L4 AR-1242-1	5.115	4.291	158977	640666	66.362	183.203 #
17) L4 AR-1242-2	5.863	4.895	152758	281903	42.146	51.537
18) L4 AR-1242-3	6.023	4.936	278544	227825	161.422	54.289 #
19) L4 AR-1242-4	6.162	0.000	232016	0	179.837	N.D. #
20) L4 AR-1242-5	6.162	0.000	232016	0	51.921	N.D. #
21) L5 AR-1248-1	5.818	4.936	247688	227825	41.958	30.064 #
22) L5 AR-1248-2	6.399	5.499	272049	299767	46.807	22.769 #
23) L5 AR-1248-3	6.461	5.524	35839	270534	4.644	29.653 #
24) L5 AR-1248-4	6.461	0.000	35839	0	4.893	N.D. #
25) L5 AR-1248-5	6.614	6.061	222308	621132	45.950	103.624 #
26) L6 AR-1254-1	6.614	5.644	222308	292191	16.377	20.309
27) L6 AR-1254-2	0.000	5.958	0	110778	N.D.	9.565 #
28) L6 AR-1254-3	6.986	6.303	370713	136059	25.837	9.289 #
29) L6 AR-1254-4	7.267	6.637	328979	184443	29.934	18.742 #
30) L6 AR-1254-5	7.528	6.689	223489	848666	27.423	43.550 #
31) L7 AR-1260-1	7.144	6.176	906119	655997	90.964	47.369 #
32) L7 AR-1260-2	7.401	6.362	613440	924456	51.210	52.695
33) L7 AR-1260-3	7.684	6.516	714212	666104	52.039	43.442
34) L7 AR-1260-4	7.983	6.986	440663	491402	44.509	42.217
35) L7 AR-1260-5	8.298	7.226	858787	1181193	44.986	43.621
36) L8 AR-1262-1	7.039	6.061	513470	621132	65.746	58.434
37) L8 AR-1262-2	7.815	6.780	227326	308831	35.305	32.307
38) L8 AR-1262-3	8.063	7.082	220469	263888	31.931	27.949
39) L8 AR-1262-4	8.671	7.508	310466	204239	22.730	15.177 #

Data Path : Z:\pestpcbsrv\HPCHEM1\ECD O\Data\PO082818\  
 Data File : PO048590.D  
 Signal(s) : Signal #1: ECD1A.CH Signal #2: ECD2B.CH  
 Acq On : 28 Aug 2018 12:02  
 Operator : SM/SJ  
 Sample : PB112405BSD  
 Misc :  
 ALS Vial : 9 Sample Multiplier: 1

Instrument :  
 ECD\_O  
 ClientSampleId :

Integration File signal 1: autoint1.e  
 Integration File signal 2: autoint2.e  
 Quant Time: Aug 29 02:07:10 2018  
 Quant Method : Z:\pestpcbsrv\HPCHEM1\ECD\_O\methods\PO082418.M  
 Quant Title : GC EXTRACTABLES  
 QLast Update : Fri Aug 24 08:17:51 2018  
 Response via : Initial Calibration  
 Integrator: ChemStation 6890 Scale Mode: Small noise peaks clipped

Volume Inj. : 2 µl  
 Signal #1 Phase : ZB-MR1 Signal #2 Phase: ZB-MR2  
 Signal #1 Info : 30Mx0.32mmx 0.50µ Signal #2 Info : 30M x 0.32mm x 0.25µm

	Compound	RT#1	RT#2	Resp#1	Resp#2	nq/ml	nq/ml
40)	L8 AR-1262-5	9.332	8.063	216562	243561	23.421	23.648
41)	L9 AR-1268-1	7.757	6.726	404967	587125	76.322	75.903
42)	L9 AR-1268-2	7.983	7.571	440663	780260	64.532	25.850 #
43)	L9 AR-1268-3	8.618	0.000	534850	0	20.732	N.D. #
44)	L9 AR-1268-4	0.000	7.936	0	115829	N.D.	17.705 #
45)	L9 AR-1268-5	0.000	8.347	0	85624	N.D.	1.375 #

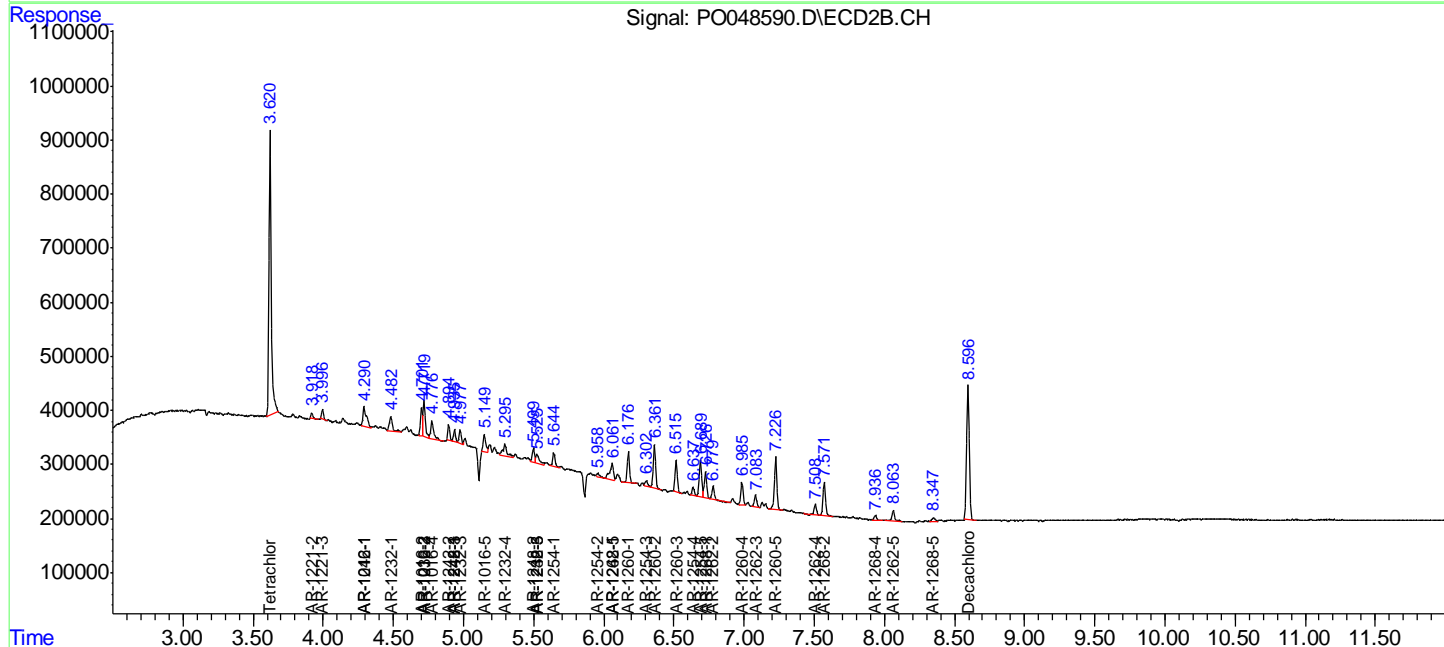
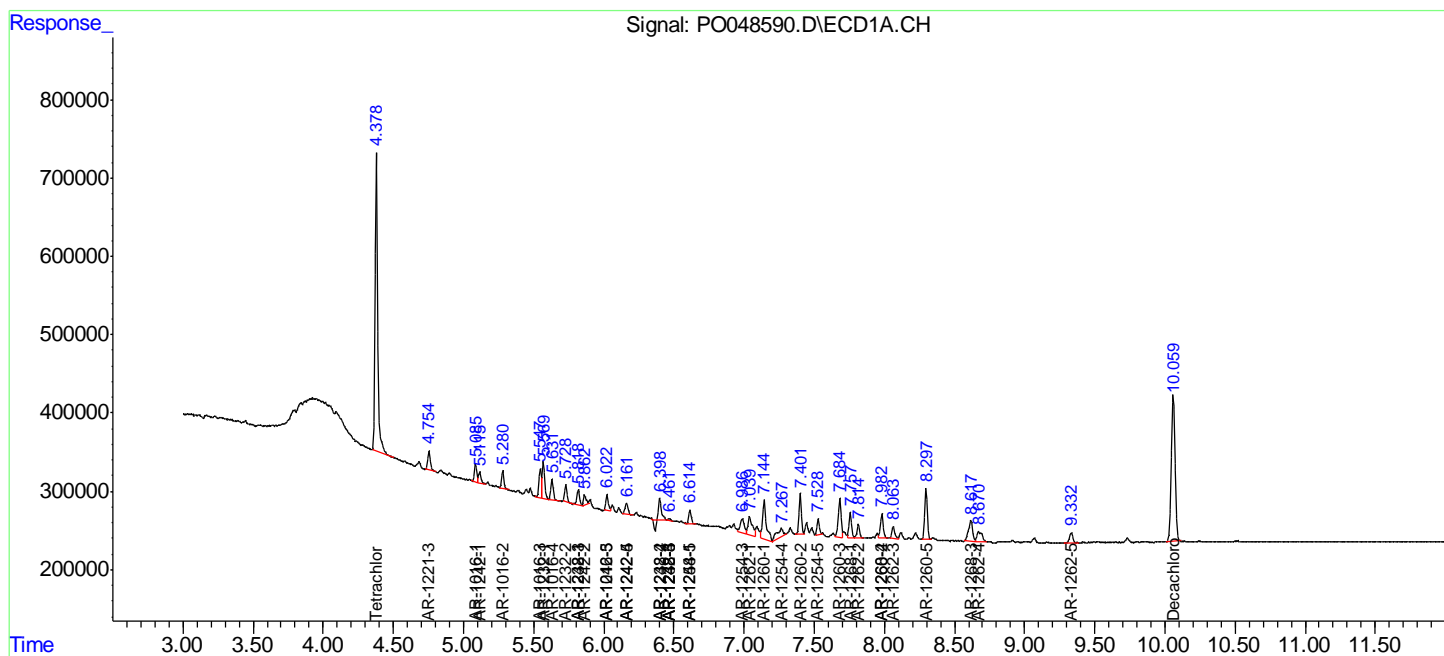
(f)=RT Delta > 1/2 Window (#)=Amounts differ by > 25% (m)=manual int.

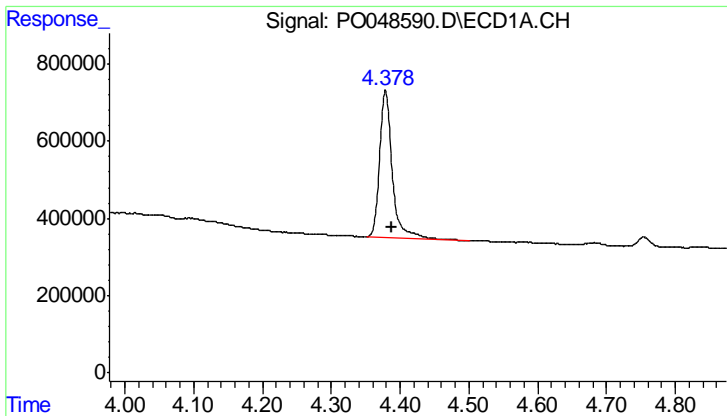
Data Path : Z:\pestpcbsrv\HPCHEM1\ECD O\Data\PO082818\  
 Data File : PO048590.D  
 Signal(s) : Signal #1: ECD1A.CH Signal #2: ECD2B.CH  
 Acq On : 28 Aug 2018 12:02  
 Operator : SM/SJ  
 Sample : PB112405BSD  
 Misc :  
 ALS Vial : 9 Sample Multiplier: 1

Instrument :  
 ECD\_O  
 ClientSampled :

Integration File signal 1: autoint1.e  
 Integration File signal 2: autoint2.e  
 Quant Time: Aug 29 02:07:10 2018  
 Quant Method : Z:\pestpcbsrv\HPCHEM1\ECD\_O\methods\PO082418.M  
 Quant Title : GC EXTRACTABLES  
 QLast Update : Fri Aug 24 08:17:51 2018  
 Response via : Initial Calibration  
 Integrator: ChemStation 6890 Scale Mode: Small noise peaks clipped

Volume Inj. : 2 ul  
 Signal #1 Phase : ZB-MR1 Signal #2 Phase: ZB-MR2  
 Signal #1 Info : 30Mx0.32mmx 0.50µ Signal #2 Info : 30M x 0.32mm x 0.25µm

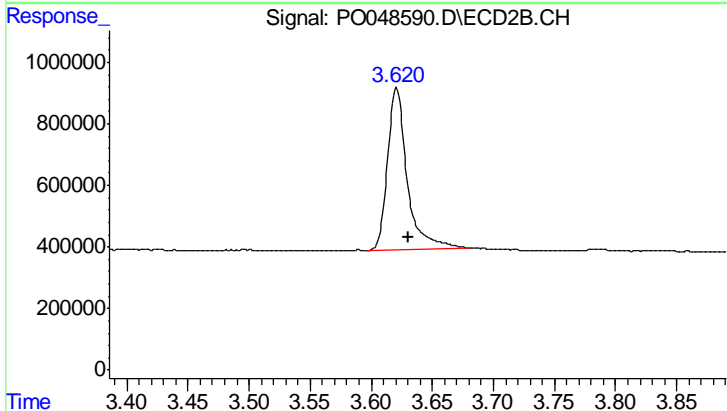




#1 Tetrachloro-m-xylene

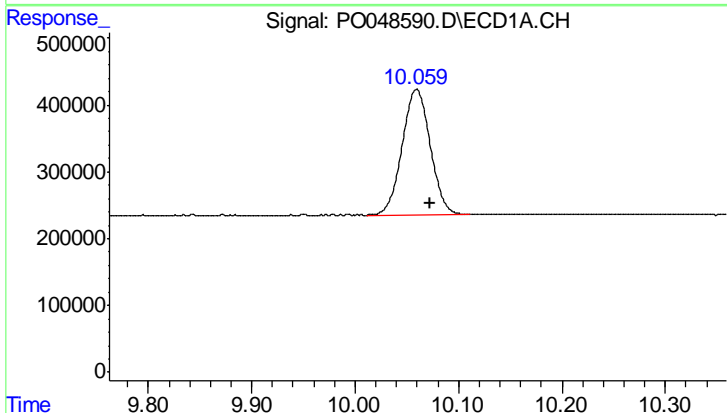
R.T.: 4.379 min  
 Delta R.T.: -0.009 min  
 Response: 4801807  
 Conc: 25.35 ng/ml

Instrument :  
 ECD\_O  
 ClientSampled :



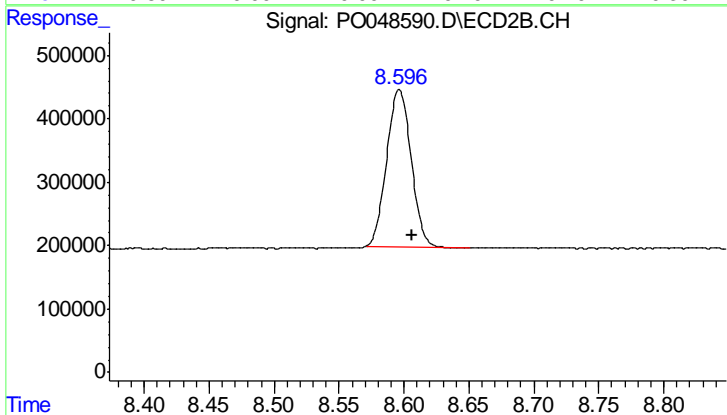
#1 Tetrachloro-m-xylene

R.T.: 3.621 min  
 Delta R.T.: -0.009 min  
 Response: 5919392  
 Conc: 21.86 ng/ml



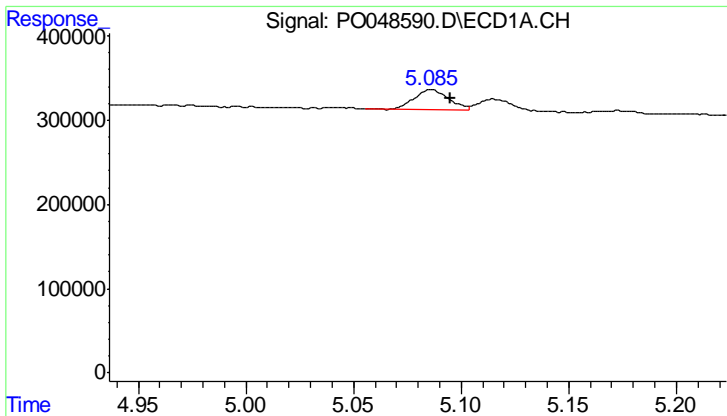
#2 Decachlorobiphenyl

R.T.: 10.059 min  
 Delta R.T.: -0.013 min  
 Response: 3544487  
 Conc: 20.58 ng/ml



#2 Decachlorobiphenyl

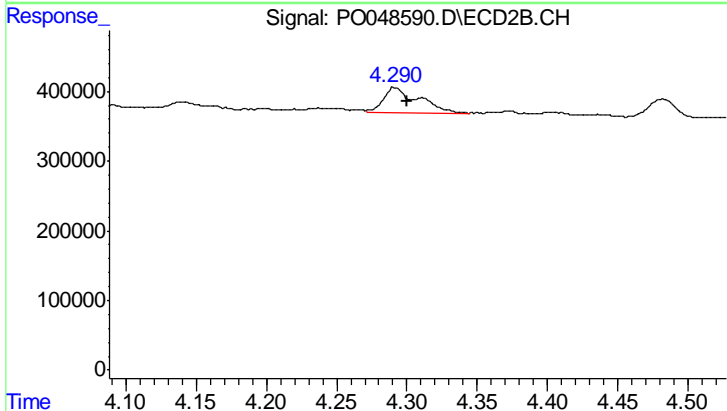
R.T.: 8.596 min  
 Delta R.T.: -0.010 min  
 Response: 3257549  
 Conc: 19.45 ng/ml



#3 AR-1016-1

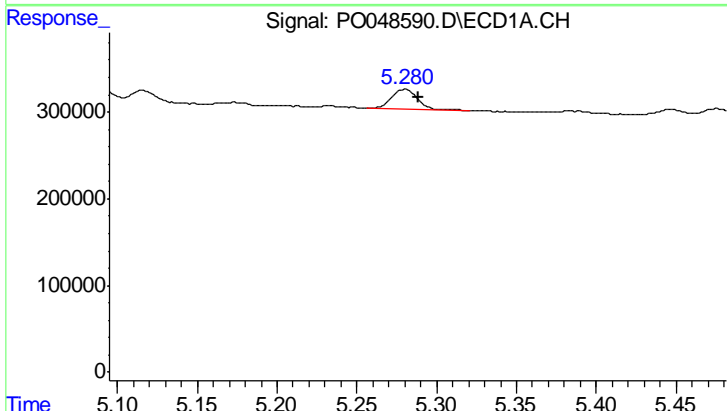
R.T.: 5.086 min  
 Delta R.T.: -0.009 min  
 Response: 270328  
 Conc: 56.68 ng/ml

Instrument :  
 ECD\_O  
 ClientSampled :



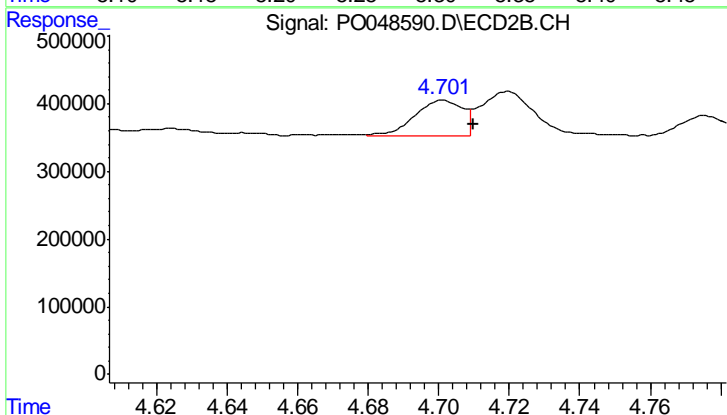
#3 AR-1016-1

R.T.: 4.291 min  
 Delta R.T.: -0.009 min  
 Response: 640666  
 Conc: 106.92 ng/ml



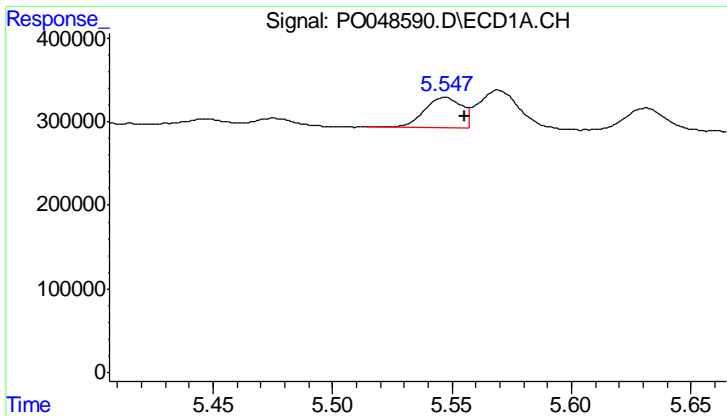
#4 AR-1016-2

R.T.: 5.280 min  
 Delta R.T.: -0.008 min  
 Response: 262808  
 Conc: 56.05 ng/ml



#4 AR-1016-2

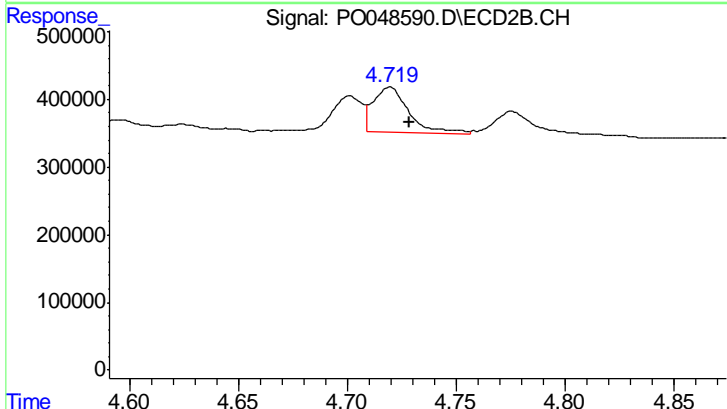
R.T.: 4.702 min  
 Delta R.T.: -0.008 min  
 Response: 493620  
 Conc: 56.19 ng/ml



#5 AR-1016-3

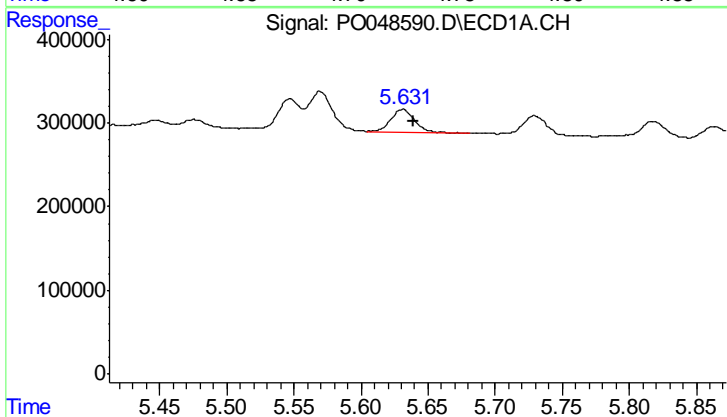
R.T.: 5.547 min  
 Delta R.T.: -0.008 min  
 Response: 407169  
 Conc: 59.84 ng/ml

Instrument :  
 ECD\_O  
 ClientSampled :



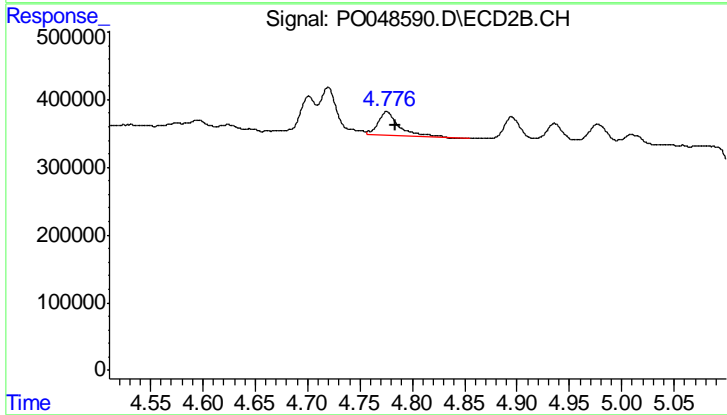
#5 AR-1016-3

R.T.: 4.719 min  
 Delta R.T.: -0.009 min  
 Response: 771207  
 Conc: 60.25 ng/ml



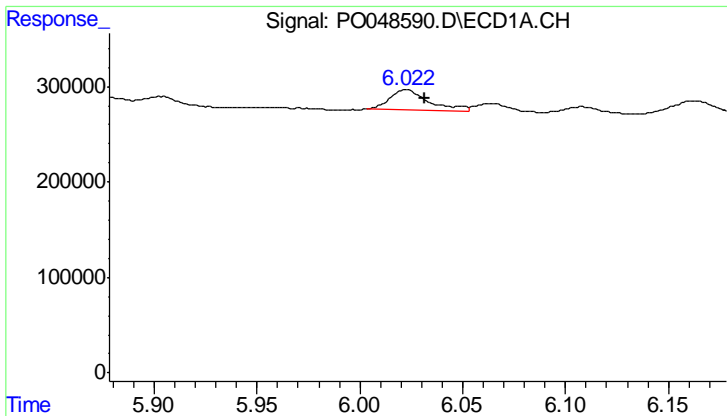
#6 AR-1016-4

R.T.: 5.631 min  
 Delta R.T.: -0.008 min  
 Response: 322656  
 Conc: 53.07 ng/ml



#6 AR-1016-4

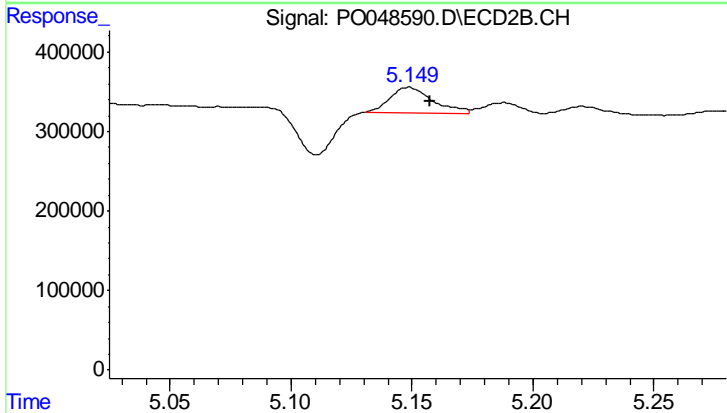
R.T.: 4.776 min  
 Delta R.T.: -0.009 min  
 Response: 453666  
 Conc: 55.32 ng/ml



#7 AR-1016-5

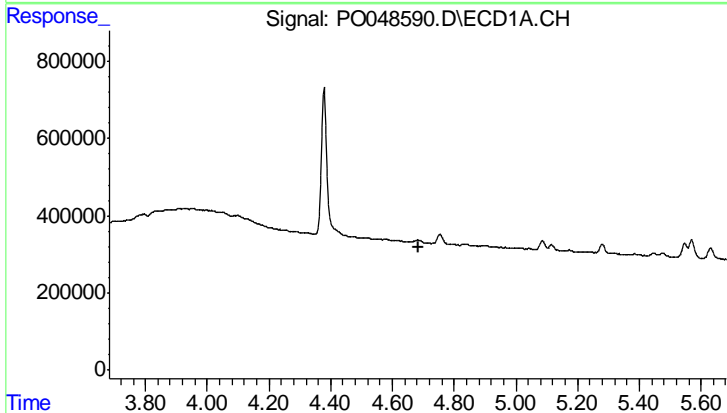
R.T.: 6.023 min  
 Delta R.T.: -0.009 min  
 Response: 278544  
 Conc: 55.78 ng/ml

Instrument :  
 ECD\_O  
 ClientSampleId :



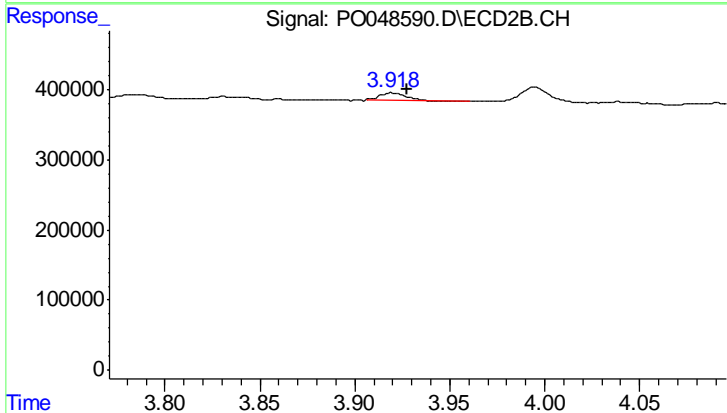
#7 AR-1016-5

R.T.: 5.149 min  
 Delta R.T.: -0.009 min  
 Response: 398374  
 Conc: 53.90 ng/ml



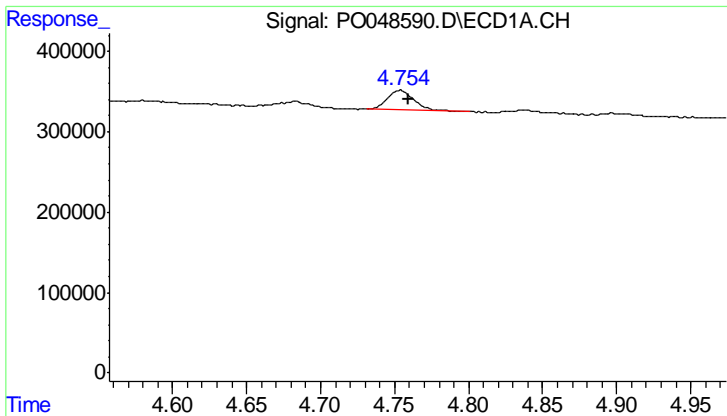
#9 AR-1221-2

R.T.: 0.000 min  
 Exp R.T. : 4.683 min  
 Response: 0  
 Conc: N.D.



#9 AR-1221-2

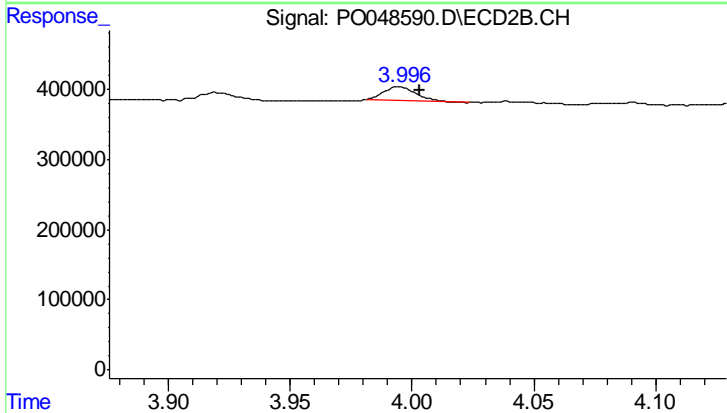
R.T.: 3.920 min  
 Delta R.T.: -0.008 min  
 Response: 84163  
 Conc: 43.75 ng/ml



#10 AR-1221-3

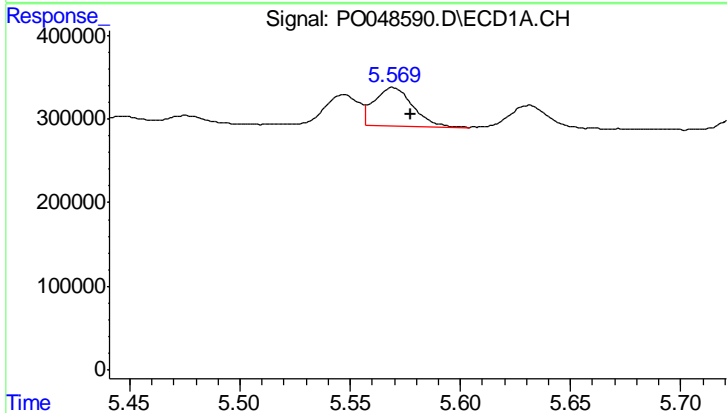
R.T.: 4.754 min  
 Delta R.T.: -0.006 min  
 Response: 296760  
 Conc: 59.82 ng/ml

Instrument :  
 ECD\_O  
 ClientSampled :



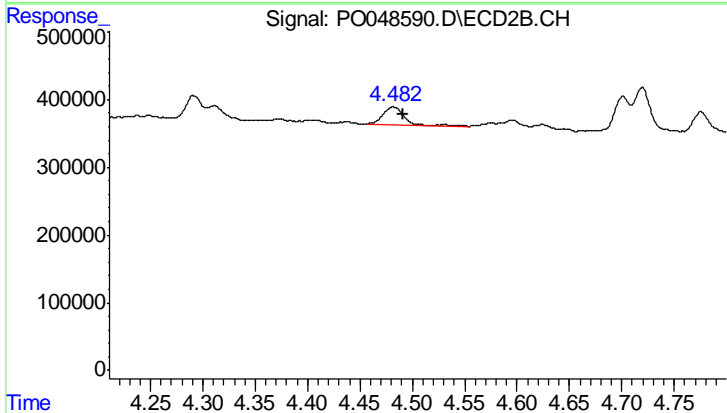
#10 AR-1221-3

R.T.: 3.995 min  
 Delta R.T.: -0.009 min  
 Response: 186316  
 Conc: 29.88 ng/ml



#11 AR-1232-1

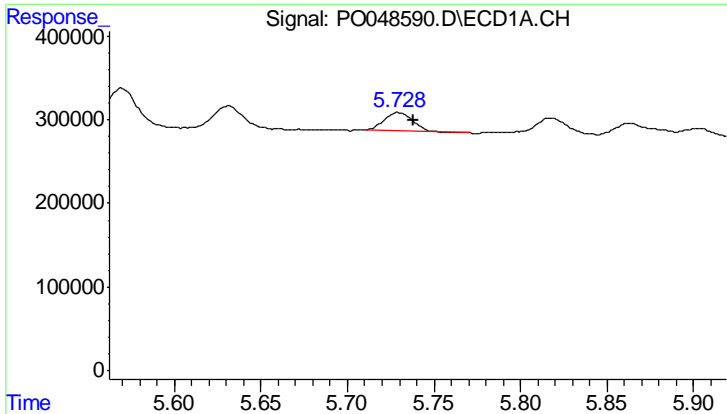
R.T.: 5.569 min  
 Delta R.T.: -0.008 min  
 Response: 564726  
 Conc: 125.68 ng/ml



#11 AR-1232-1

R.T.: 4.482 min  
 Delta R.T.: -0.010 min  
 Response: 397287  
 Conc: 136.13 ng/ml

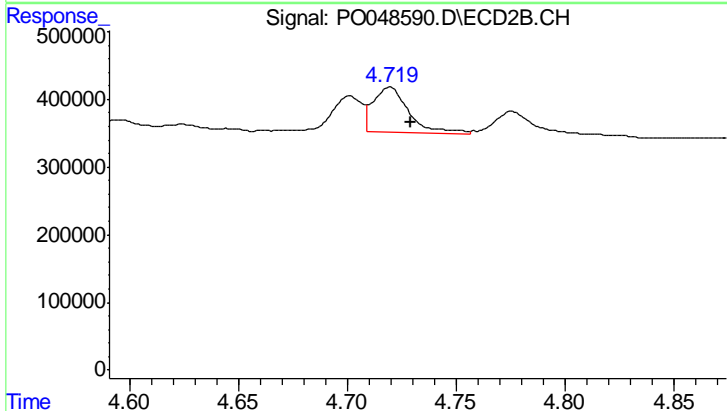




#12 AR-1232-2

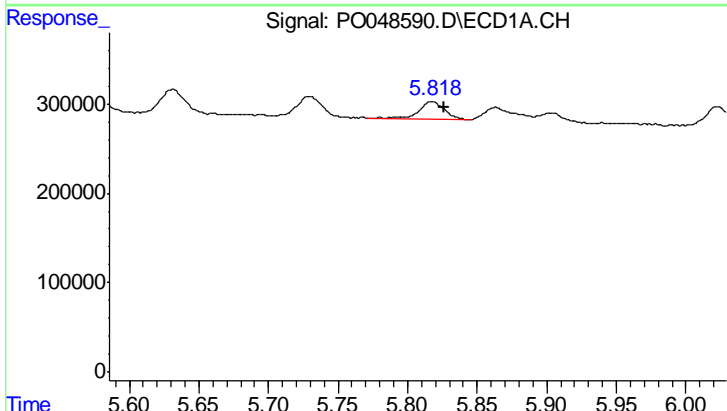
R.T.: 5.729 min  
 Delta R.T.: -0.009 min  
 Response: 242802  
 Conc: 106.87 ng/ml

Instrument :  
 ECD\_O  
 ClientSampled :



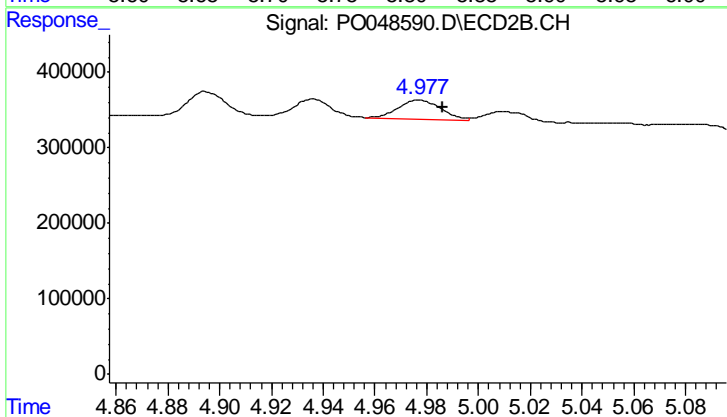
#12 AR-1232-2

R.T.: 4.719 min  
 Delta R.T.: -0.010 min  
 Response: 771207  
 Conc: 128.79 ng/ml



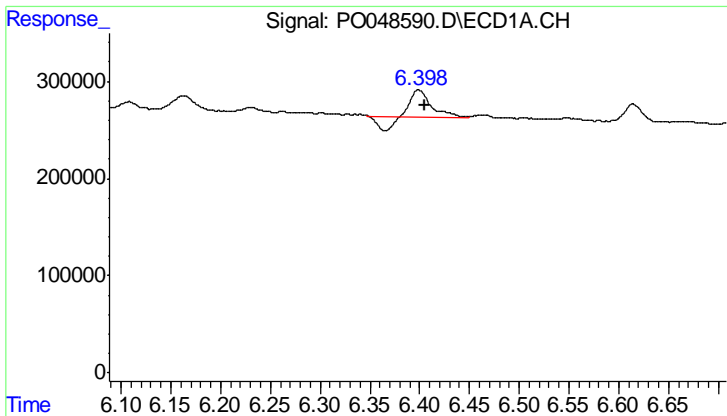
#13 AR-1232-3

R.T.: 5.818 min  
 Delta R.T.: -0.009 min  
 Response: 247688  
 Conc: 147.30 ng/ml



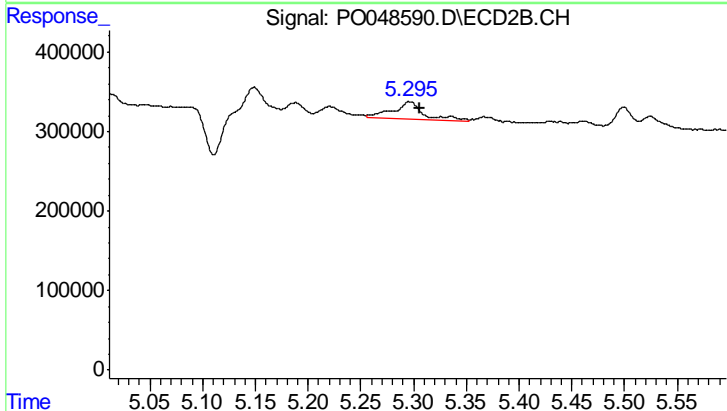
#13 AR-1232-3

R.T.: 4.977 min  
 Delta R.T.: -0.009 min  
 Response: 289460  
 Conc: 110.14 ng/ml

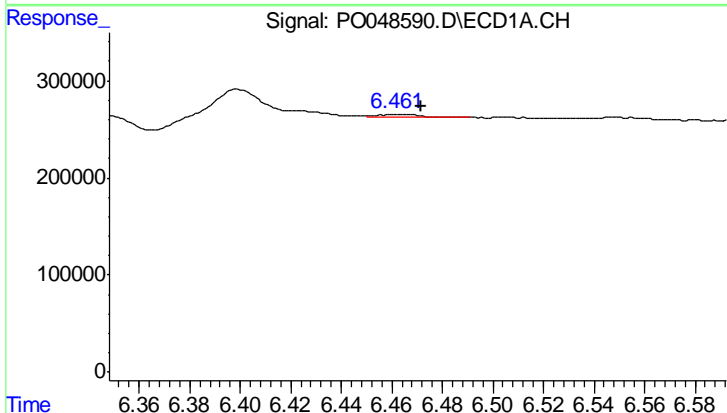


#14 AR-1232-4  
 R.T.: 6.399 min  
 Delta R.T.: -0.006 min  
 Response: 272049  
 Conc: 167.96 ng/ml

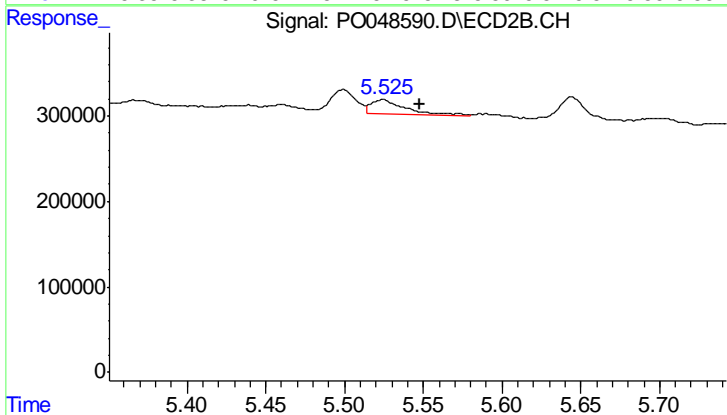
Instrument :  
 ECD\_O  
 ClientSampled :



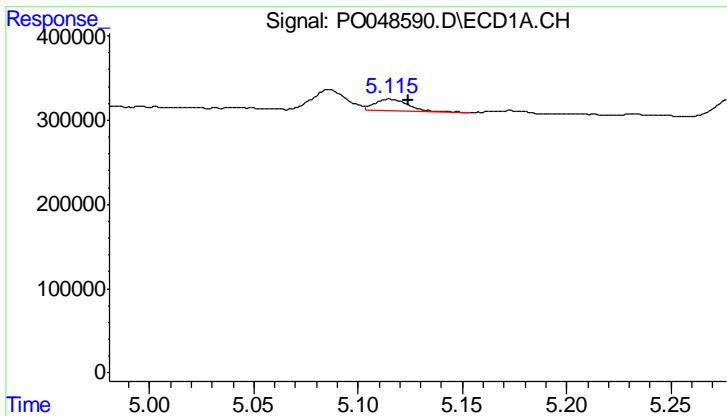
#14 AR-1232-4  
 R.T.: 5.296 min  
 Delta R.T.: -0.009 min  
 Response: 474889  
 Conc: 171.18 ng/ml



#15 AR-1232-5  
 R.T.: 6.461 min  
 Delta R.T.: -0.010 min  
 Response: 35839  
 Conc: 15.23 ng/ml



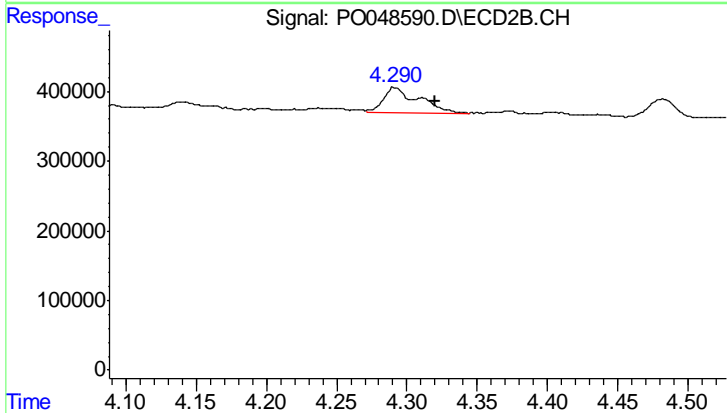
#15 AR-1232-5  
 R.T.: 5.524 min  
 Delta R.T.: -0.024 min  
 Response: 270534  
 Conc: 87.89 ng/ml



#16 AR-1242-1

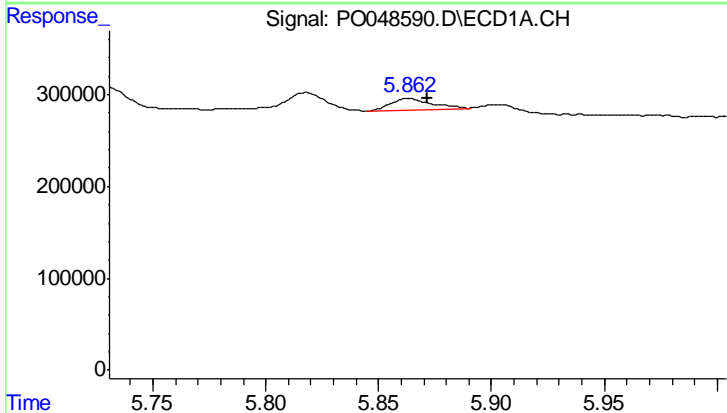
R.T.: 5.115 min  
 Delta R.T.: -0.009 min  
 Response: 158977  
 Conc: 66.36 ng/ml

Instrument :  
 ECD\_O  
 ClientSampled :



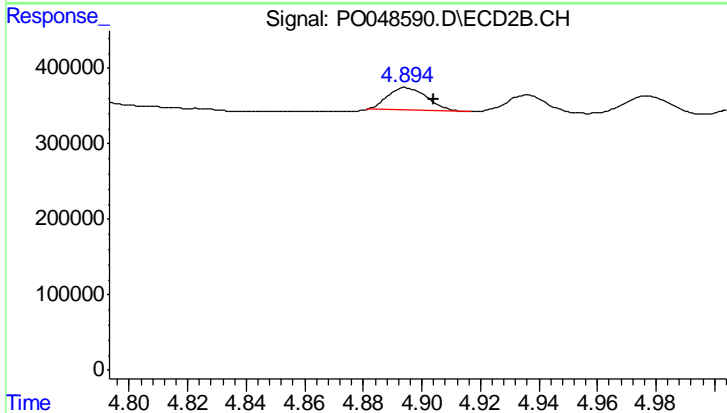
#16 AR-1242-1

R.T.: 4.291 min  
 Delta R.T.: -0.028 min  
 Response: 640666  
 Conc: 183.20 ng/ml



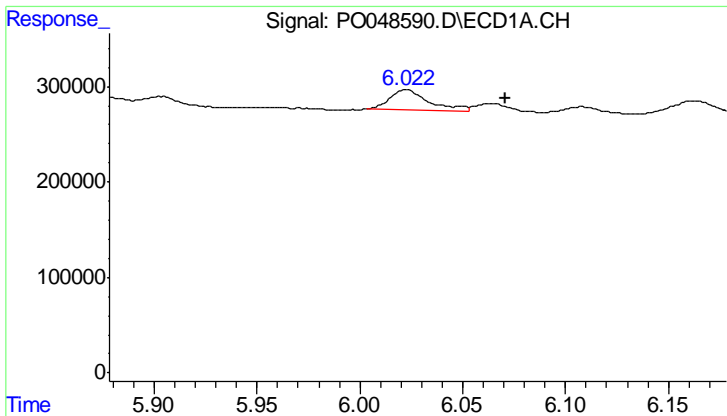
#17 AR-1242-2

R.T.: 5.863 min  
 Delta R.T.: -0.008 min  
 Response: 152758  
 Conc: 42.15 ng/ml



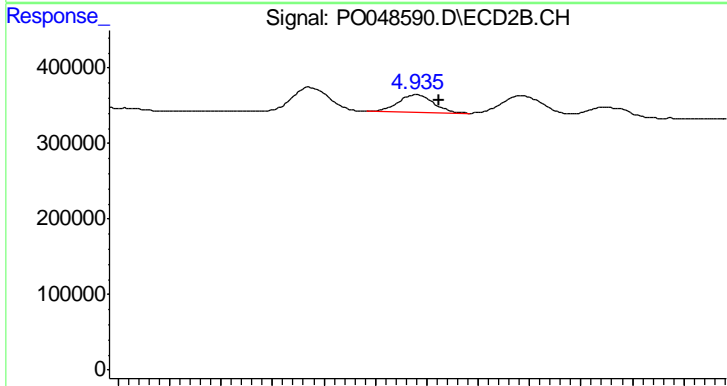
#17 AR-1242-2

R.T.: 4.895 min  
 Delta R.T.: -0.009 min  
 Response: 281903  
 Conc: 51.54 ng/ml

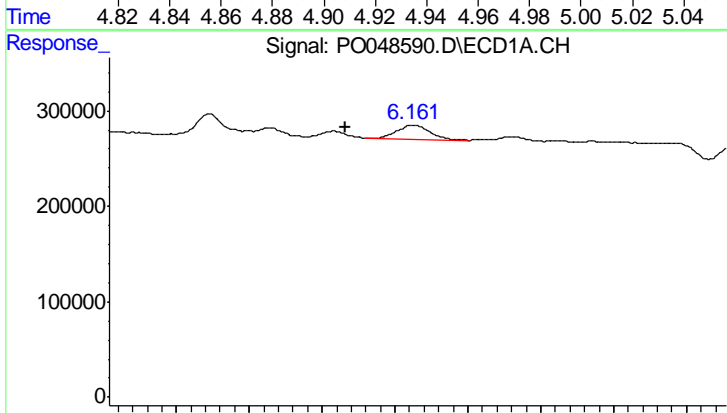


#18 AR-1242-3  
 R.T.: 6.023 min  
 Delta R.T.: -0.048 min  
 Response: 278544  
 Conc: 161.42 ng/ml

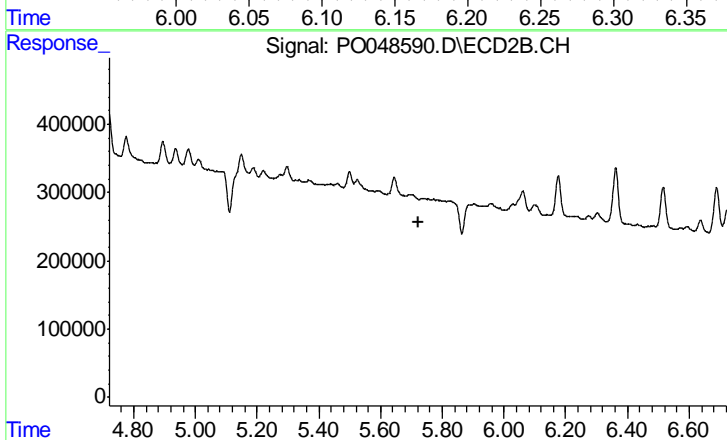
Instrument :  
 ECD\_O  
 ClientSampled :



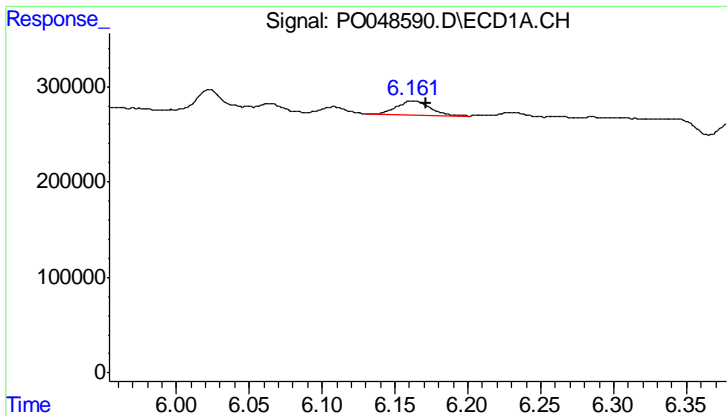
#18 AR-1242-3  
 R.T.: 4.936 min  
 Delta R.T.: -0.009 min  
 Response: 227825  
 Conc: 54.29 ng/ml



#19 AR-1242-4  
 R.T.: 6.162 min  
 Delta R.T.: 0.047 min  
 Response: 232016  
 Conc: 179.84 ng/ml



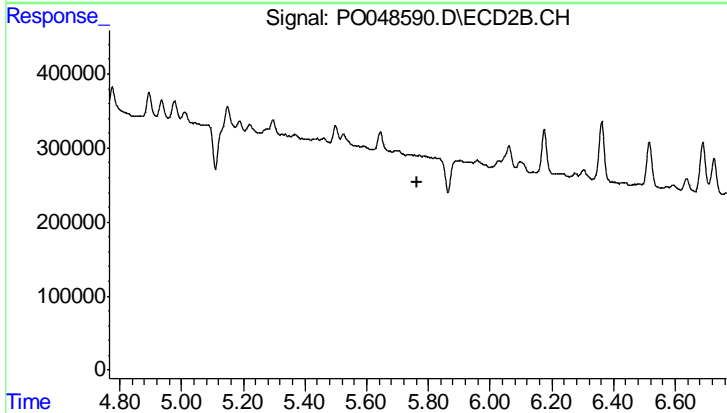
#19 AR-1242-4  
 R.T.: 0.000 min  
 Exp R.T. : 5.721 min  
 Response: 0  
 Conc: N.D.



#20 AR-1242-5

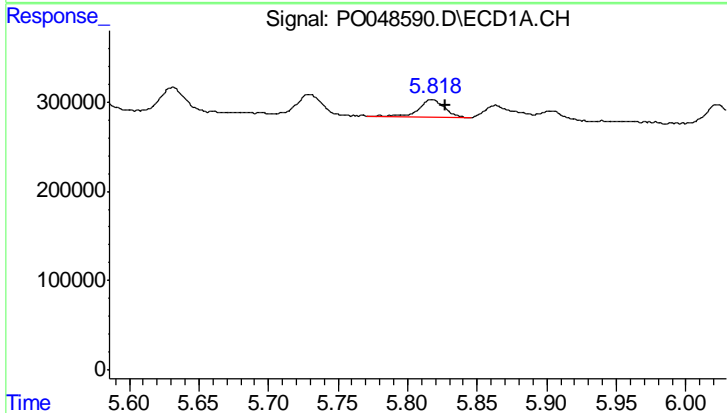
R.T.: 6.162 min  
 Delta R.T.: -0.009 min  
 Response: 232016  
 Conc: 51.92 ng/ml

Instrument :  
 ECD\_O  
 ClientSampled :



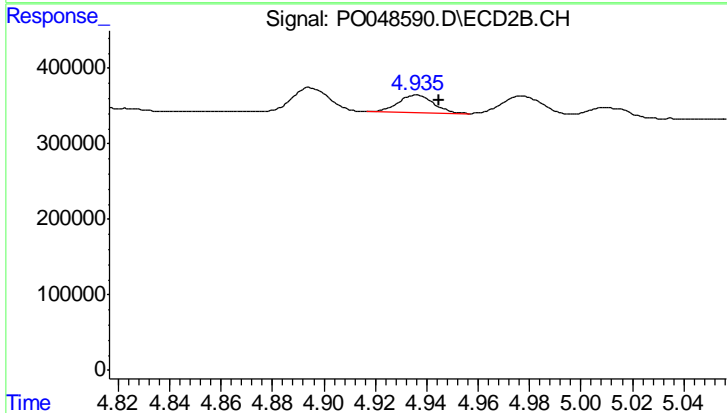
#20 AR-1242-5

R.T.: 0.000 min  
 Exp R.T.: 5.766 min  
 Response: 0  
 Conc: N.D.



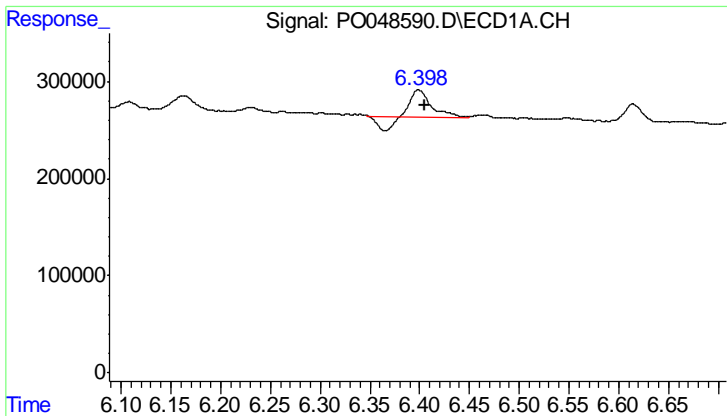
#21 AR-1248-1

R.T.: 5.818 min  
 Delta R.T.: -0.009 min  
 Response: 247688  
 Conc: 41.96 ng/ml



#21 AR-1248-1

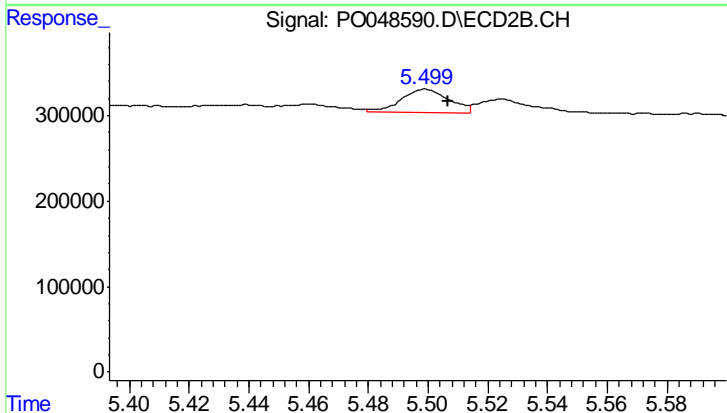
R.T.: 4.936 min  
 Delta R.T.: -0.009 min  
 Response: 227825  
 Conc: 30.06 ng/ml



#22 AR-1248-2

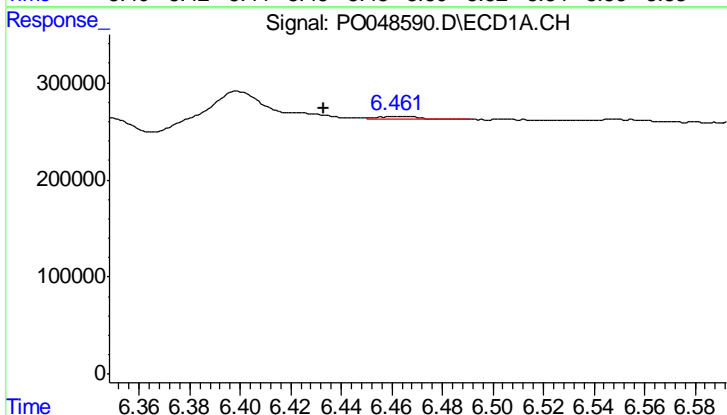
R.T.: 6.399 min  
 Delta R.T.: -0.006 min  
 Response: 272049  
 Conc: 46.81 ng/ml

Instrument :  
 ECD\_O  
 ClientSampled :



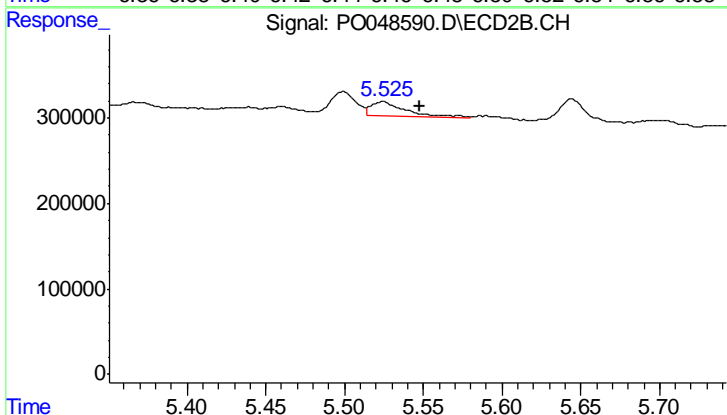
#22 AR-1248-2

R.T.: 5.499 min  
 Delta R.T.: -0.008 min  
 Response: 299767  
 Conc: 22.77 ng/ml



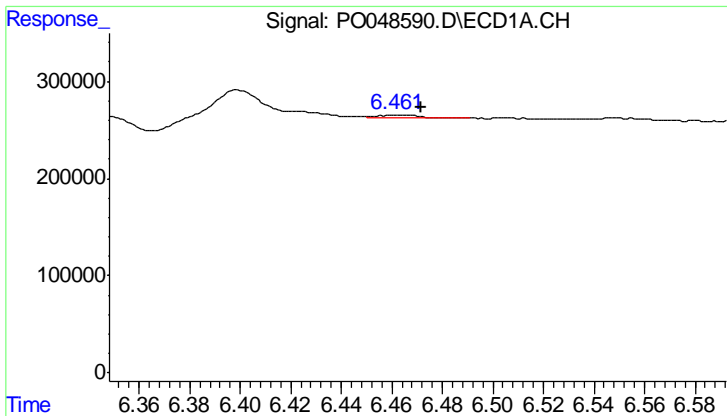
#23 AR-1248-3

R.T.: 6.461 min  
 Delta R.T.: 0.028 min  
 Response: 35839  
 Conc: 4.64 ng/ml



#23 AR-1248-3

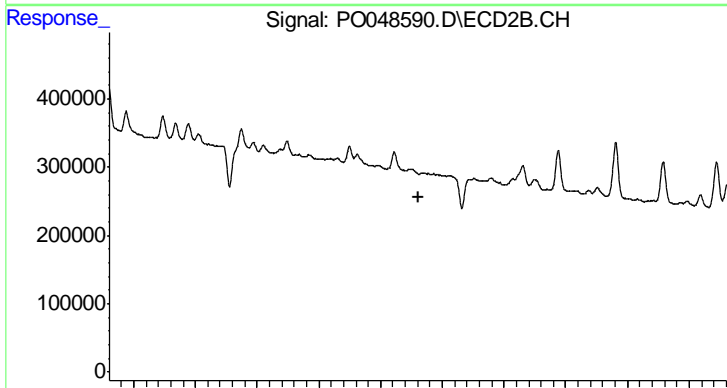
R.T.: 5.524 min  
 Delta R.T.: -0.023 min  
 Response: 270534  
 Conc: 29.65 ng/ml



#24 AR-1248-4

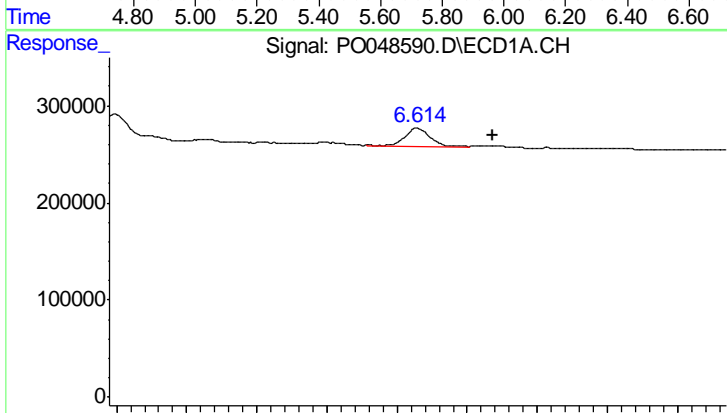
R.T.: 6.461 min  
 Delta R.T.: -0.010 min  
 Response: 35839  
 Conc: 4.89 ng/ml

Instrument :  
 ECD\_O  
 ClientSampled :



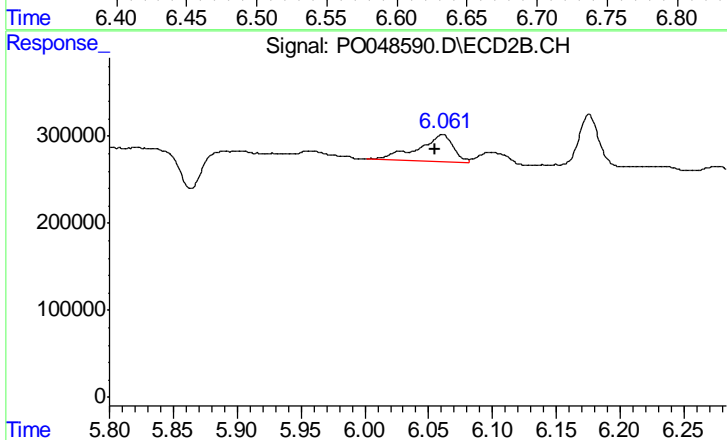
#24 AR-1248-4

R.T.: 0.000 min  
 Exp R.T.: 5.721 min  
 Response: 0  
 Conc: N.D.



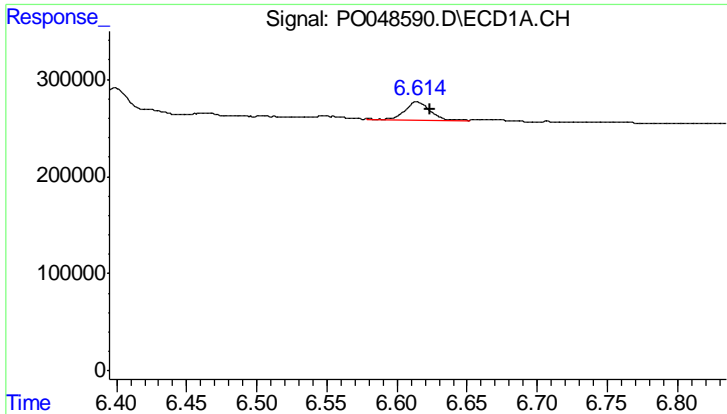
#25 AR-1248-5

R.T.: 6.614 min  
 Delta R.T.: -0.054 min  
 Response: 222308  
 Conc: 45.95 ng/ml



#25 AR-1248-5

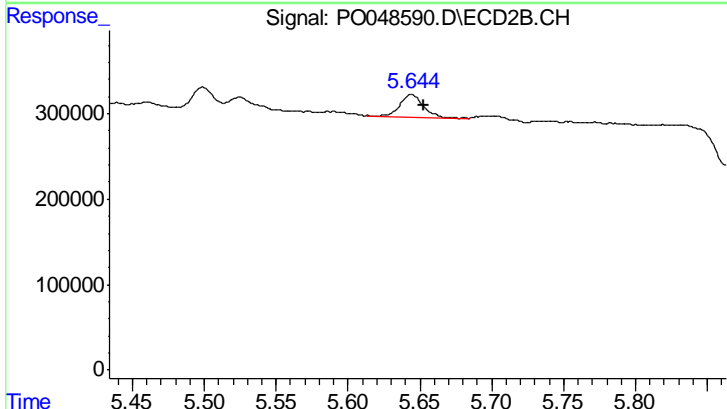
R.T.: 6.061 min  
 Delta R.T.: 0.006 min  
 Response: 621132  
 Conc: 103.62 ng/ml



#26 AR-1254-1

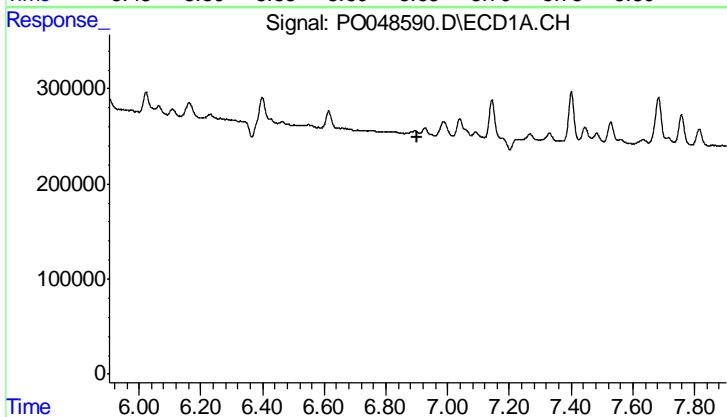
R.T.: 6.614 min  
 Delta R.T.: -0.009 min  
 Response: 222308  
 Conc: 16.38 ng/ml

Instrument :  
 ECD\_O  
 ClientSampled :



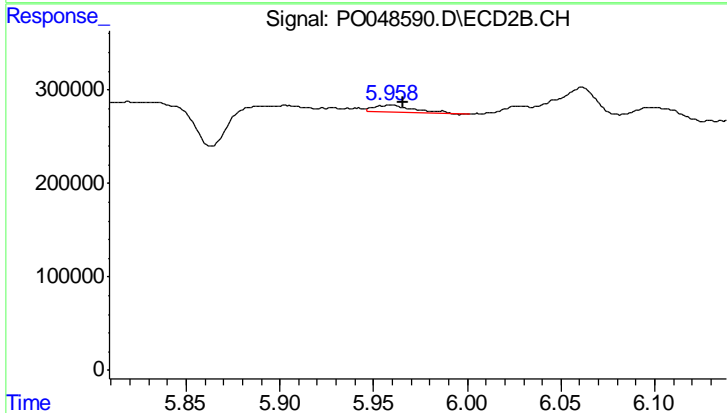
#26 AR-1254-1

R.T.: 5.644 min  
 Delta R.T.: -0.008 min  
 Response: 292191  
 Conc: 20.31 ng/ml



#27 AR-1254-2

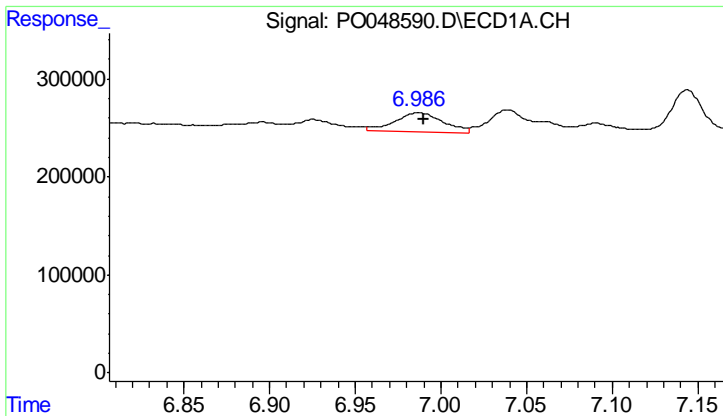
R.T.: 0.000 min  
 Exp R.T. : 6.904 min  
 Response: 0  
 Conc: N.D.



#27 AR-1254-2

R.T.: 5.958 min  
 Delta R.T.: -0.008 min  
 Response: 110778  
 Conc: 9.56 ng/ml

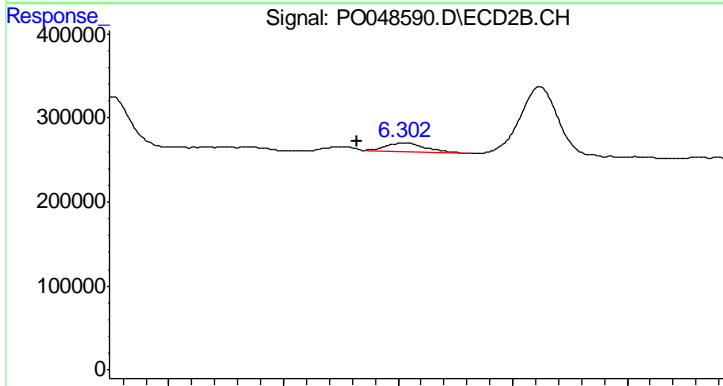




#28 AR-1254-3

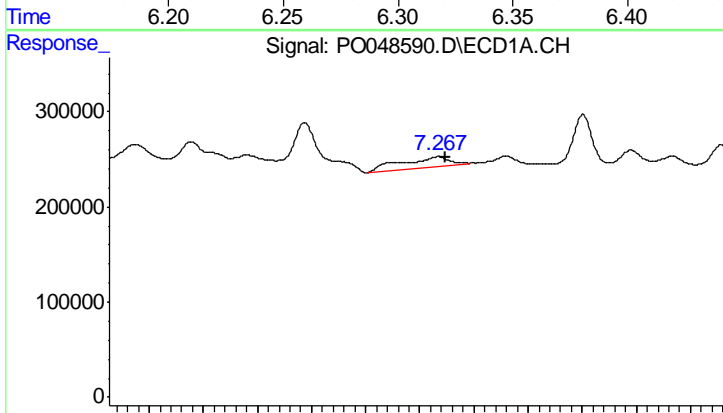
R.T.: 6.986 min  
 Delta R.T.: -0.003 min  
 Response: 370713  
 Conc: 25.84 ng/ml

Instrument :  
 ECD\_O  
 ClientSampled :



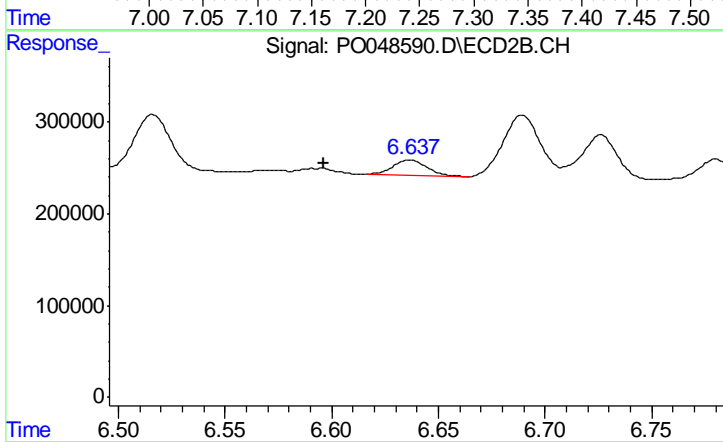
#28 AR-1254-3

R.T.: 6.303 min  
 Delta R.T.: 0.020 min  
 Response: 136059  
 Conc: 9.29 ng/ml



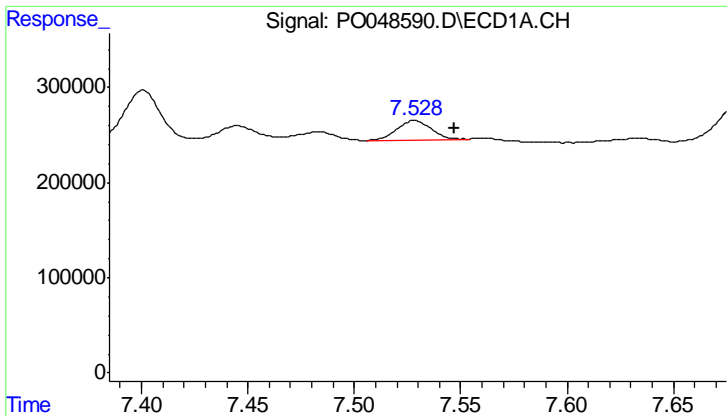
#29 AR-1254-4

R.T.: 7.267 min  
 Delta R.T.: -0.007 min  
 Response: 328979  
 Conc: 29.93 ng/ml



#29 AR-1254-4

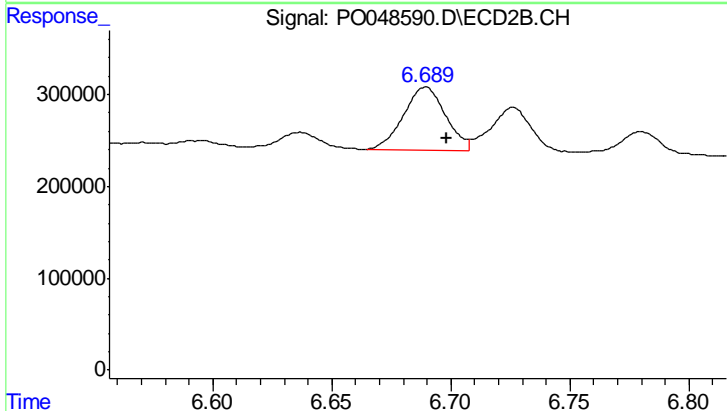
R.T.: 6.637 min  
 Delta R.T.: 0.040 min  
 Response: 184443  
 Conc: 18.74 ng/ml



#30 AR-1254-5

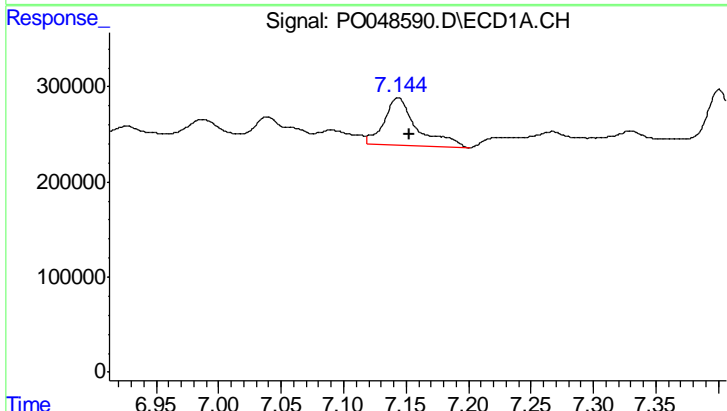
R.T.: 7.528 min  
 Delta R.T.: -0.018 min  
 Response: 223489  
 Conc: 27.42 ng/ml

Instrument :  
 ECD\_O  
 ClientSampled :



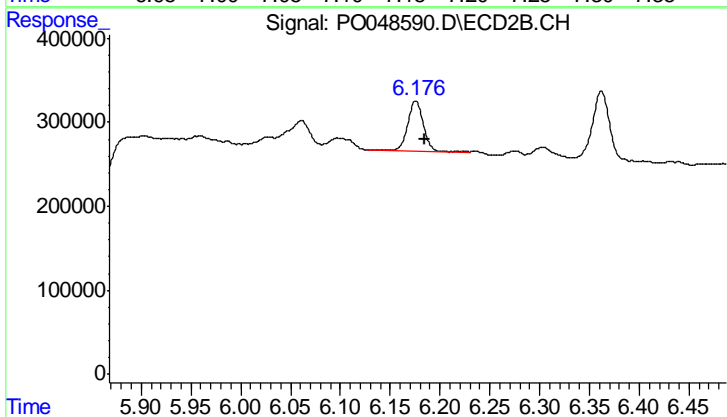
#30 AR-1254-5

R.T.: 6.689 min  
 Delta R.T.: -0.009 min  
 Response: 848666  
 Conc: 43.55 ng/ml



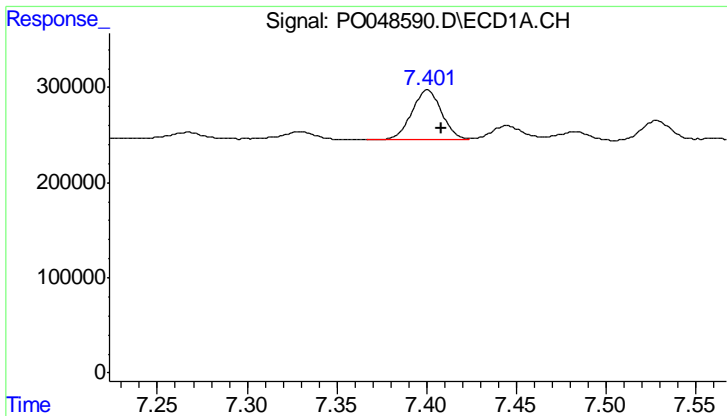
#31 AR-1260-1

R.T.: 7.144 min  
 Delta R.T.: -0.009 min  
 Response: 906119  
 Conc: 90.96 ng/ml



#31 AR-1260-1

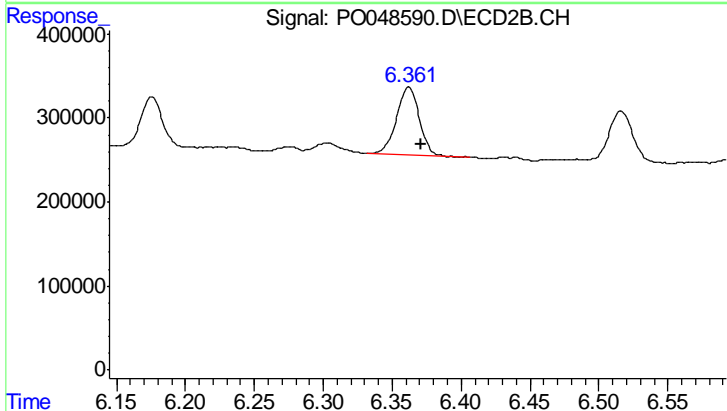
R.T.: 6.176 min  
 Delta R.T.: -0.009 min  
 Response: 655997  
 Conc: 47.37 ng/ml



#32 AR-1260-2

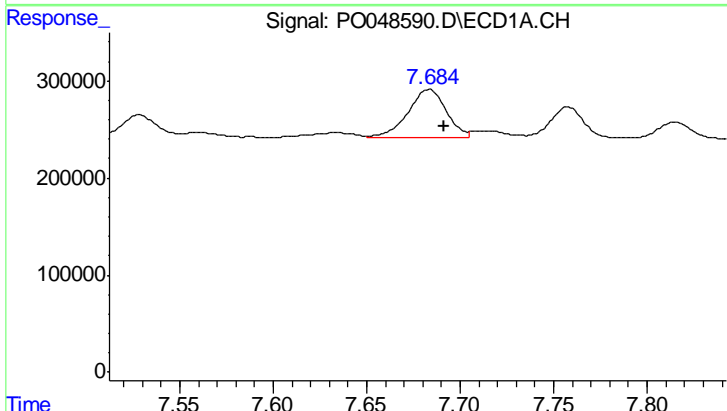
R.T.: 7.401 min  
 Delta R.T.: -0.007 min  
 Response: 613440  
 Conc: 51.21 ng/ml

Instrument :  
 ECD\_O  
 ClientSampled :



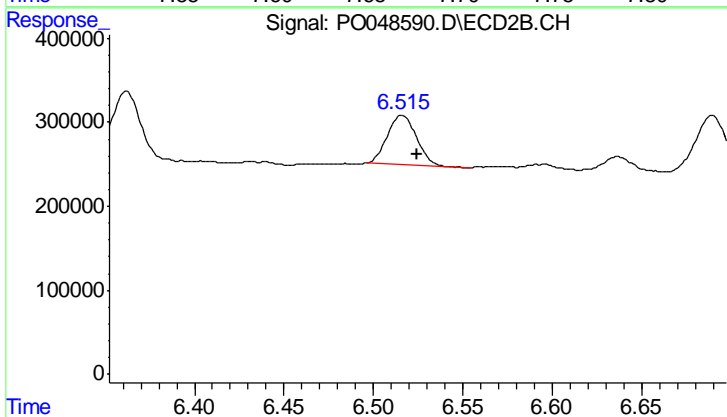
#32 AR-1260-2

R.T.: 6.362 min  
 Delta R.T.: -0.009 min  
 Response: 924456  
 Conc: 52.70 ng/ml



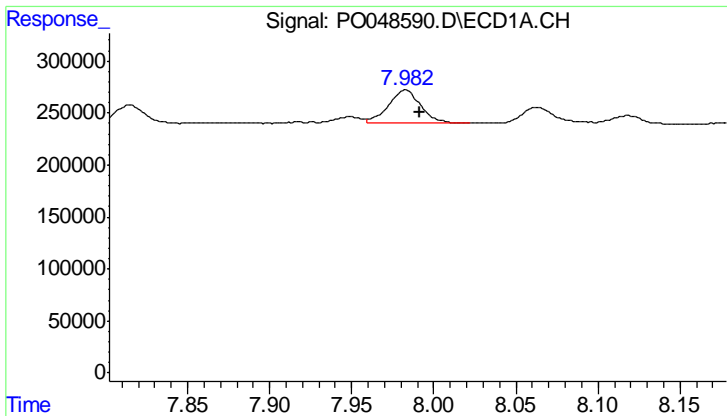
#33 AR-1260-3

R.T.: 7.684 min  
 Delta R.T.: -0.008 min  
 Response: 714212  
 Conc: 52.04 ng/ml



#33 AR-1260-3

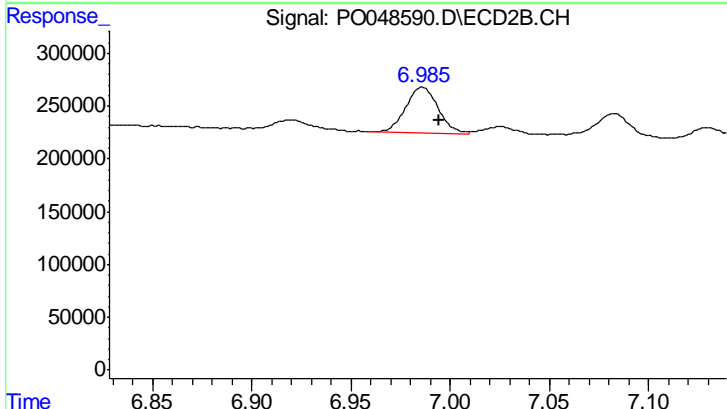
R.T.: 6.516 min  
 Delta R.T.: -0.009 min  
 Response: 666104  
 Conc: 43.44 ng/ml



#34 AR-1260-4

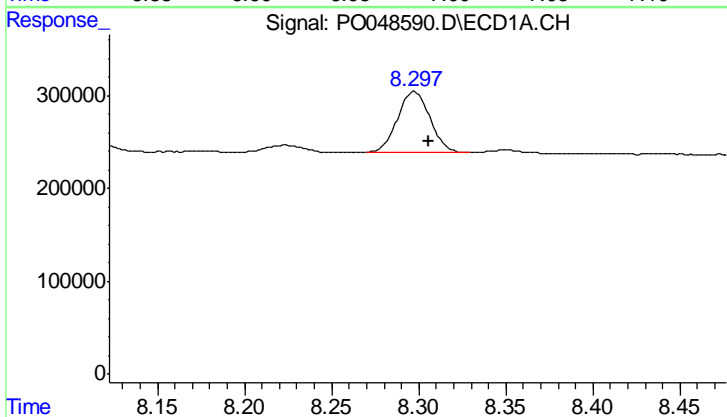
R.T.: 7.983 min  
 Delta R.T.: -0.009 min  
 Response: 440663  
 Conc: 44.51 ng/ml

Instrument :  
 ECD\_O  
 ClientSampled :



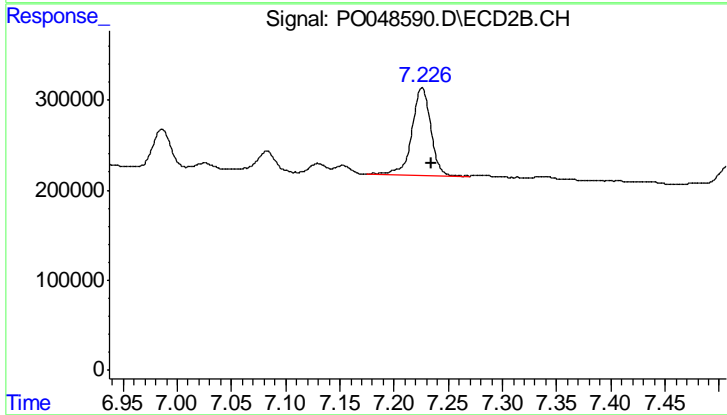
#34 AR-1260-4

R.T.: 6.986 min  
 Delta R.T.: -0.008 min  
 Response: 491402  
 Conc: 42.22 ng/ml



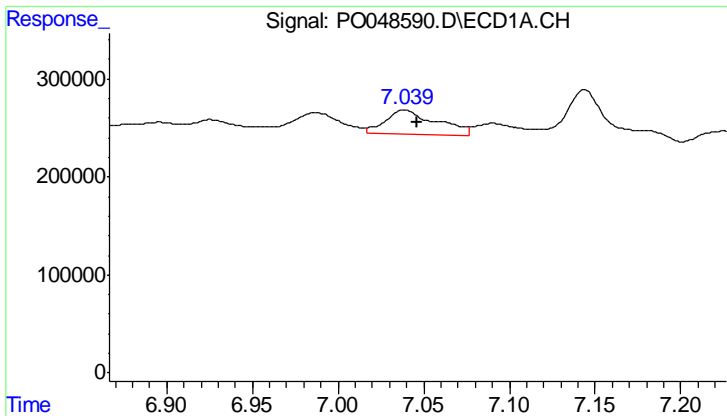
#35 AR-1260-5

R.T.: 8.298 min  
 Delta R.T.: -0.008 min  
 Response: 858787  
 Conc: 44.99 ng/ml



#35 AR-1260-5

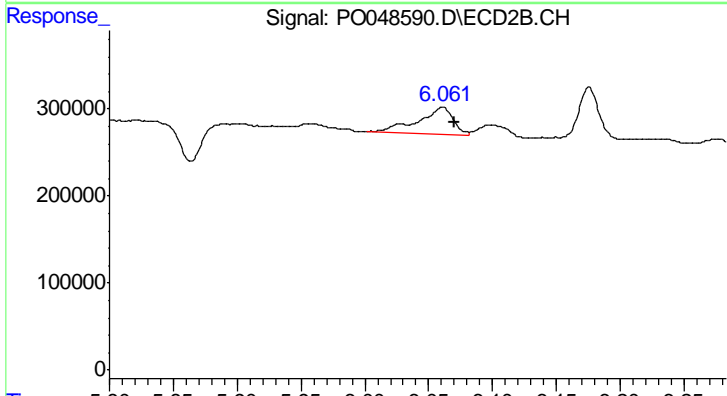
R.T.: 7.226 min  
 Delta R.T.: -0.008 min  
 Response: 1181193  
 Conc: 43.62 ng/ml



#36 AR-1262-1

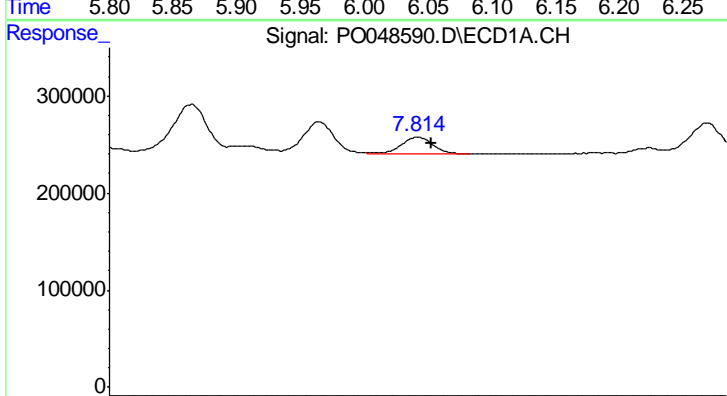
R.T.: 7.039 min  
 Delta R.T.: -0.008 min  
 Response: 513470  
 Conc: 65.75 ng/ml

Instrument :  
 ECD\_O  
 ClientSampled :



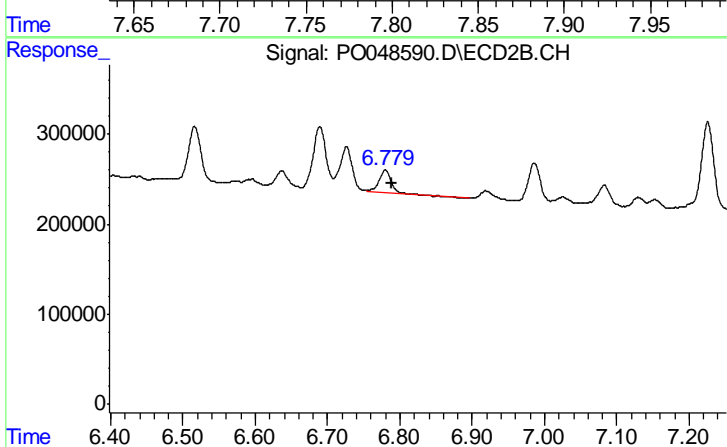
#36 AR-1262-1

R.T.: 6.061 min  
 Delta R.T.: -0.010 min  
 Response: 621132  
 Conc: 58.43 ng/ml



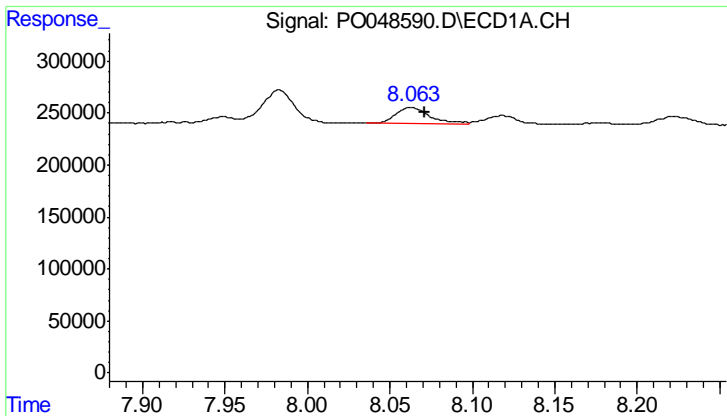
#37 AR-1262-2

R.T.: 7.815 min  
 Delta R.T.: -0.008 min  
 Response: 227326  
 Conc: 35.30 ng/ml



#37 AR-1262-2

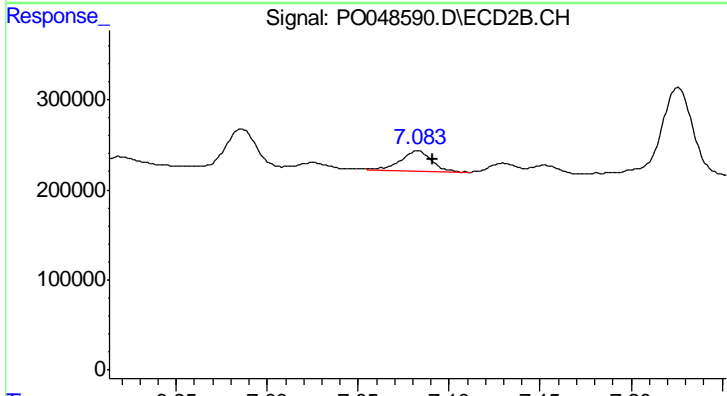
R.T.: 6.780 min  
 Delta R.T.: -0.008 min  
 Response: 308831  
 Conc: 32.31 ng/ml



#38 AR-1262-3

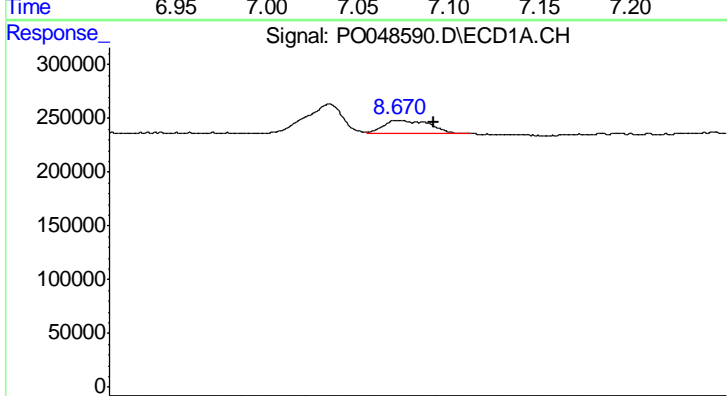
R.T.: 8.063 min  
 Delta R.T.: -0.008 min  
 Response: 220469  
 Conc: 31.93 ng/ml

Instrument :  
 ECD\_O  
 ClientSampled :



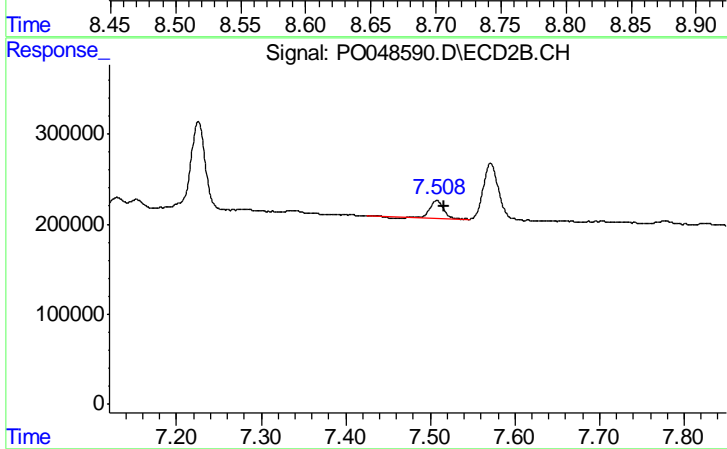
#38 AR-1262-3

R.T.: 7.082 min  
 Delta R.T.: -0.008 min  
 Response: 263888  
 Conc: 27.95 ng/ml



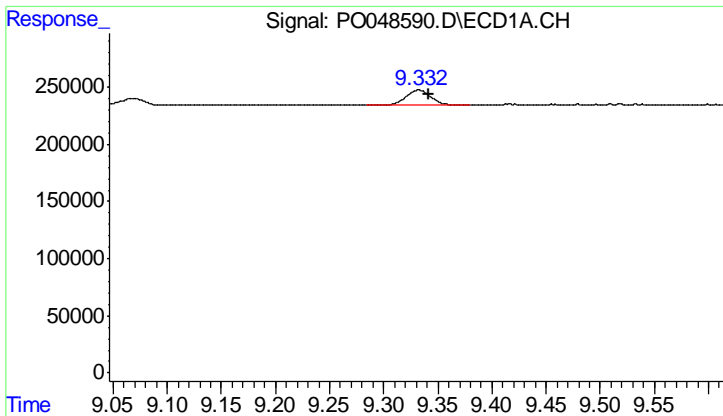
#39 AR-1262-4

R.T.: 8.671 min  
 Delta R.T.: -0.028 min  
 Response: 310466  
 Conc: 22.73 ng/ml



#39 AR-1262-4

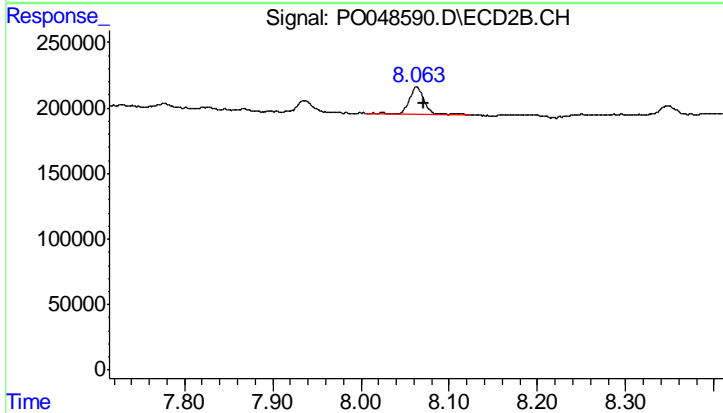
R.T.: 7.508 min  
 Delta R.T.: -0.008 min  
 Response: 204239  
 Conc: 15.18 ng/ml



#40 AR-1262-5

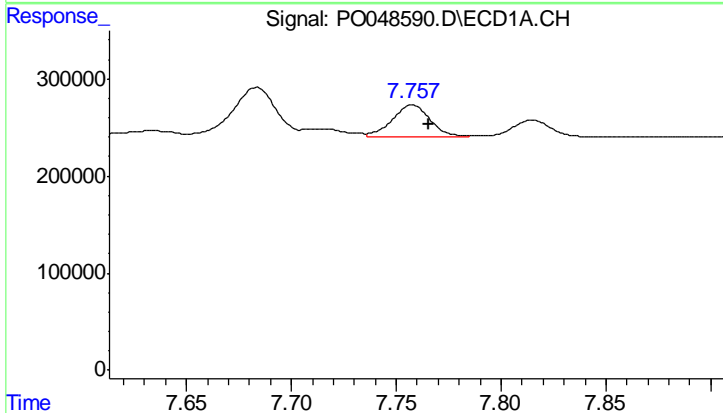
R.T.: 9.332 min  
 Delta R.T.: -0.009 min  
 Response: 216562  
 Conc: 23.42 ng/ml

Instrument :  
 ECD\_O  
 ClientSampled :



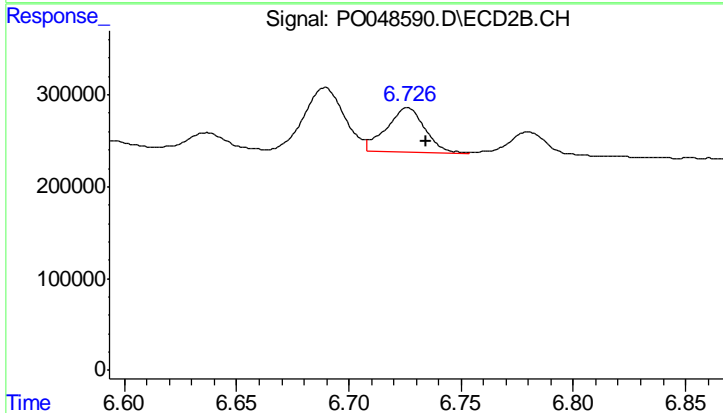
#40 AR-1262-5

R.T.: 8.063 min  
 Delta R.T.: -0.008 min  
 Response: 243561  
 Conc: 23.65 ng/ml



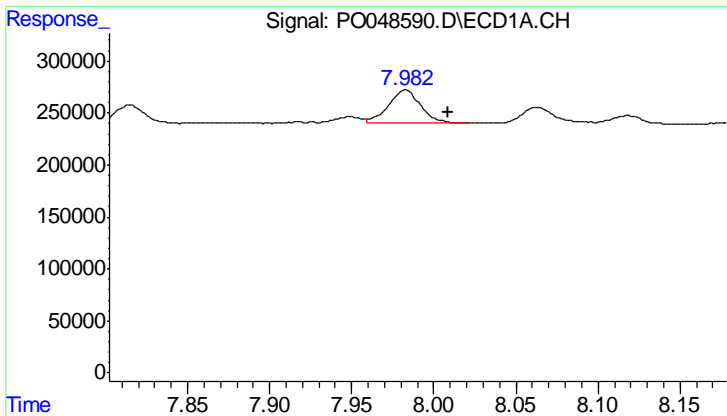
#41 AR-1268-1

R.T.: 7.757 min  
 Delta R.T.: -0.008 min  
 Response: 404967  
 Conc: 76.32 ng/ml



#41 AR-1268-1

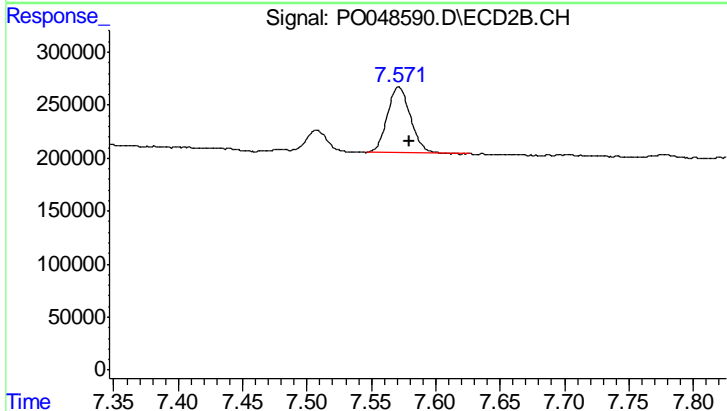
R.T.: 6.726 min  
 Delta R.T.: -0.008 min  
 Response: 587125  
 Conc: 75.90 ng/ml



#42 AR-1268-2

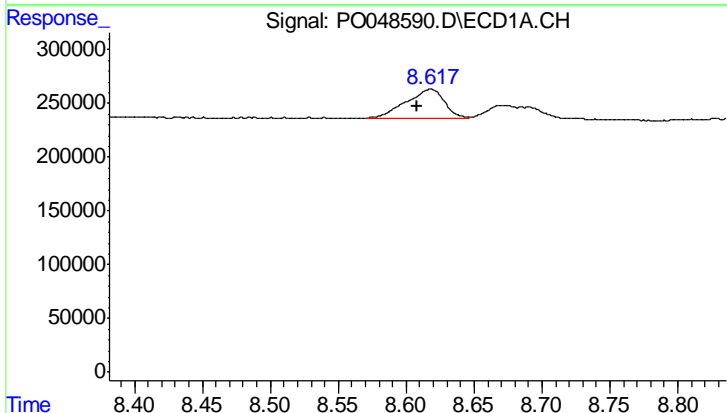
R.T.: 7.983 min  
 Delta R.T.: -0.026 min  
 Response: 440663  
 Conc: 64.53 ng/ml

Instrument :  
 ECD\_O  
 ClientSampled :



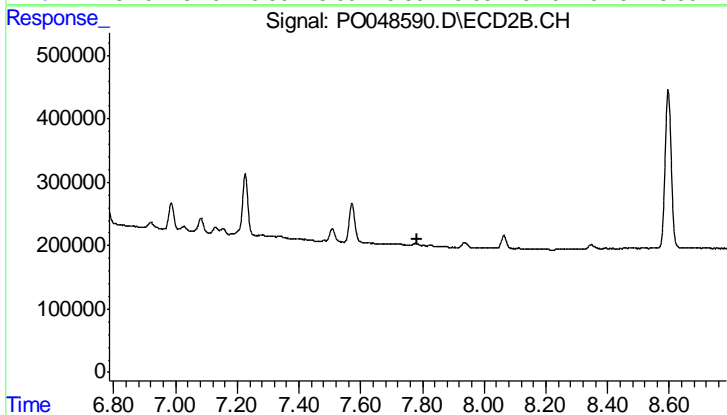
#42 AR-1268-2

R.T.: 7.571 min  
 Delta R.T.: -0.009 min  
 Response: 780260  
 Conc: 25.85 ng/ml



#43 AR-1268-3

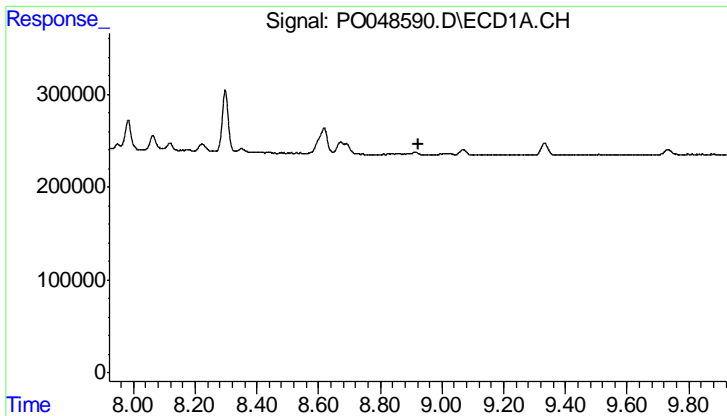
R.T.: 8.618 min  
 Delta R.T.: 0.010 min  
 Response: 534850  
 Conc: 20.73 ng/ml



#43 AR-1268-3

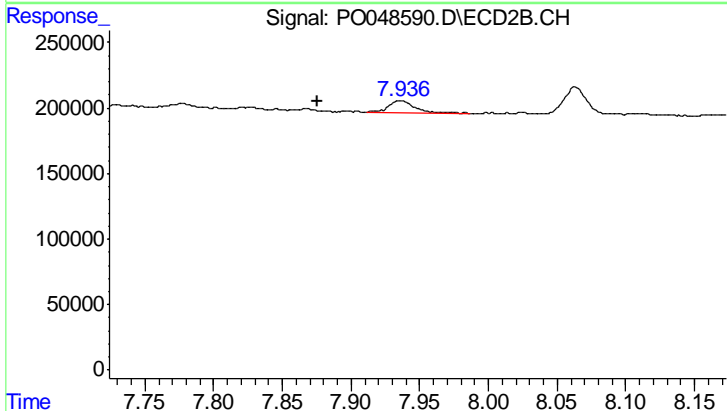
R.T.: 0.000 min  
 Exp R.T. : 7.785 min  
 Response: 0  
 Conc: N.D.



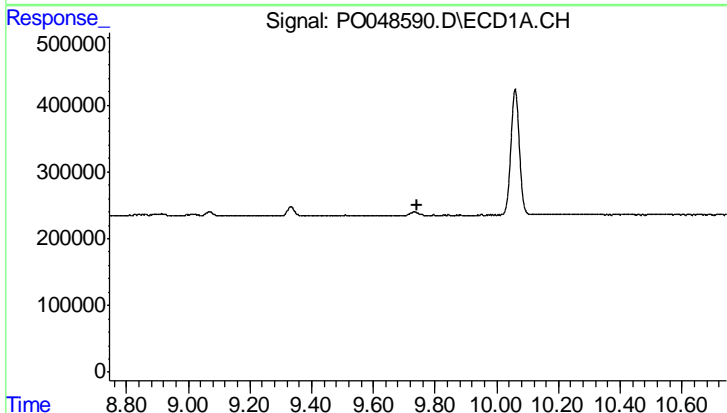


#44 AR-1268-4  
 R.T.: 0.000 min  
 Exp R.T.: 8.922 min  
 Response: 0  
 Conc: N.D.

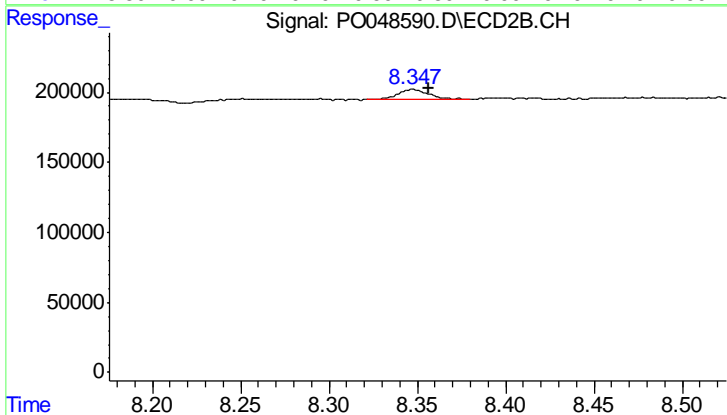
Instrument :  
 ECD\_O  
 ClientSampled :



#44 AR-1268-4  
 R.T.: 7.936 min  
 Delta R.T.: 0.060 min  
 Response: 115829  
 Conc: 17.70 ng/ml



#45 AR-1268-5  
 R.T.: 0.000 min  
 Exp R.T.: 9.744 min  
 Response: 0  
 Conc: N.D.



#45 AR-1268-5  
 R.T.: 8.347 min  
 Delta R.T.: -0.009 min  
 Response: 85624  
 Conc: 1.38 ng/ml