

Data Path : Z:\pestpcbsrv\HPCHEM1\ECD_0\Data\P0082819\
 Data File : P0059960.D
 Signal(s) : Signal #1: ECD1A.CH Signal #2: ECD2B.CH
 Acq On : 28 Aug 2019 14:08
 Operator : SM/AJ
 Sample : K4551-01RE
 Misc :
 ALS Vial : 14 Sample Multiplier: 1

Instrument :
 ECD_O
 ClientSampleId :
 S401-K1-1.0-1.5-082619-FDRE

Integration File signal 1: autoint1.e
 Integration File signal 2: autoint2.e
 Quant Time: Aug 28 14:40:25 2019
 Quant Method : Z:\pestpcbsrv\HPCHEM1\ECD_0\methods\P0081719.M
 Quant Title : GC EXTRACTABLES
 QLast Update : Wed Aug 28 13:30:59 2019
 Response via : Initial Calibration
 Integrator: ChemStation 6890 Scale Mode: Small noise peaks clipped

Volume Inj. : 2 µl
 Signal #1 Phase : ZB-MR1 Signal #2 Phase: ZB-MR2
 Signal #1 Info : 30Mx0.32mmx 0.50µ Signal #2 Info : 30M x 0.32mm x 0.25µm

Compound	RT#1	RT#2	Resp#1	Resp#2	ng/ml	ng/ml

System Monitoring Compounds						
1) SA Tetrachlo...	4.130	3.501	772467	609612	22.063	16.936
2) SA Decachlor...	9.601	8.361	543286	413300	10.212	10.250
Target Compounds						
3) L1 AR-1016-1	5.305	0.000	14138	0	8.815	N.D. #
4) L1 AR-1016-2	5.305	0.000	14138	0	5.909	N.D. #
5) L1 AR-1016-3	5.392	0.000	13178	0	8.847	N.D. #
6) L1 AR-1016-4	5.489	0.000	579	0	0.479	N.D. #
8) L2 AR-1221-1	4.360	0.000	1812	0	4.279	N.D. #
9) L2 AR-1221-2	4.461	0.000	1551	0	4.777	N.D. #
10) L2 AR-1221-3	4.508	0.000	7726	0	7.345	N.D. #
11) L3 AR-1232-1	4.508	0.000	7726	0	6.198	N.D. #
12) L3 AR-1232-2	5.039	0.000	6738	0	9.538	N.D. #
13) L3 AR-1232-3	5.305	0.000	14138	0	9.232	N.D. #
14) L3 AR-1232-4	5.489	0.000	579	0	0.741	N.D. #
15) L3 AR-1232-5	5.577	0.000	2494	0	4.149	N.D. #
16) L4 AR-1242-1	5.305	0.000	14138	0	11.136	N.D. #
17) L4 AR-1242-2	5.305	0.000	14138	0	7.619	N.D. #
18) L4 AR-1242-3	5.392	0.000	13178	0	11.274	N.D. #
19) L4 AR-1242-4	5.489	0.000	579	0	0.599	N.D. #
20) L4 AR-1242-5	6.186	0.000	9702	0	7.721	N.D. #
21) L5 AR-1248-1	5.305	0.000	14138	0	14.102	N.D. #
22) L5 AR-1248-2	5.546	0.000	4623	0	3.187	N.D. #
24) L5 AR-1248-4	6.124	0.000	42819	0	20.948	N.D. #
25) L5 AR-1248-5	6.186	0.000	9702	0	4.892	N.D. #
26) L6 AR-1254-1	6.124	0.000	42819	0	20.523	N.D. #
27) L6 AR-1254-2	6.334	0.000	8984	0	2.693	N.D. #
28) L6 AR-1254-3	6.730	0.000	23085	0	6.506	N.D. #
29) L6 AR-1254-4	6.982	0.000	18657	0	6.334	N.D. #
30) L6 AR-1254-5	7.398	0.000	25285	0	8.176	N.D. #
31) L7 AR-1260-1	6.860	0.000	9541	0	3.539	N.D. #
32) L7 AR-1260-2	7.116	0.000	31943	0	8.609	N.D. #
33) L7 AR-1260-3	7.466	0.000	19169	0	5.851	N.D. #
34) L7 AR-1260-4	7.694	6.742	77075	77128	25.095	34.089 #
35) L7 AR-1260-5	7.999	0.000	80439	0	11.360	N.D. #
36) L8 AR-1262-1	7.466	0.000	19169	0	3.950	N.D. #
37) L8 AR-1262-2	7.999	0.000	80439	0	10.425	N.D. #
38) L8 AR-1262-3	8.300	0.000	654416	0	128.259	N.D. #
39) L8 AR-1262-4	8.372	0.000	206496	0	53.570	N.D. #
41) L9 AR-1268-1	8.300	0.000	654416	0	69.540	N.D. #
42) L9 AR-1268-2	8.372	0.000	206496	0	26.196	N.D. #
43) L9 AR-1268-3	8.563	0.000	136686	0	19.391	N.D. #
45) L9 AR-1268-5	9.310	0.000	220194	0	11.940	N.D. #

Data Path : Z:\pestpcbsrv\HPCHEM1\ECD_0\Data\P0082819\
Data File : P0059960.D
Signal(s) : Signal #1: ECD1A.CH Signal #2: ECD2B.CH
Acq On : 28 Aug 2019 14:08
Operator : SM/AJ
Sample : K4551-01RE
Misc :
ALS Vial : 14 Sample Multiplier: 1

Instrument :
ECD_0
ClientSampleId :
S401-K1-1.0-1.5-082619-FDRE

Integration File signal 1: autoint1.e
Integration File signal 2: autoint2.e
Quant Time: Aug 28 14:40:25 2019
Quant Method : Z:\pestpcbsrv\HPCHEM1\ECD_0\methods\P0081719.M
Quant Title : GC EXTRACTABLES
QLast Update : Wed Aug 28 13:30:59 2019
Response via : Initial Calibration
Integrator: ChemStation 6890 Scale Mode: Small noise peaks clipped

Volume Inj. : 2 µl
Signal #1 Phase : ZB-MR1 Signal #2 Phase: ZB-MR2
Signal #1 Info : 30Mx0.32mmx 0.50µ Signal #2 Info : 30M x 0.32mm x 0.25µm

Compound	RT#1	RT#2	Resp#1	Resp#2	ng/ml	ng/ml
----------	------	------	--------	--------	-------	-------

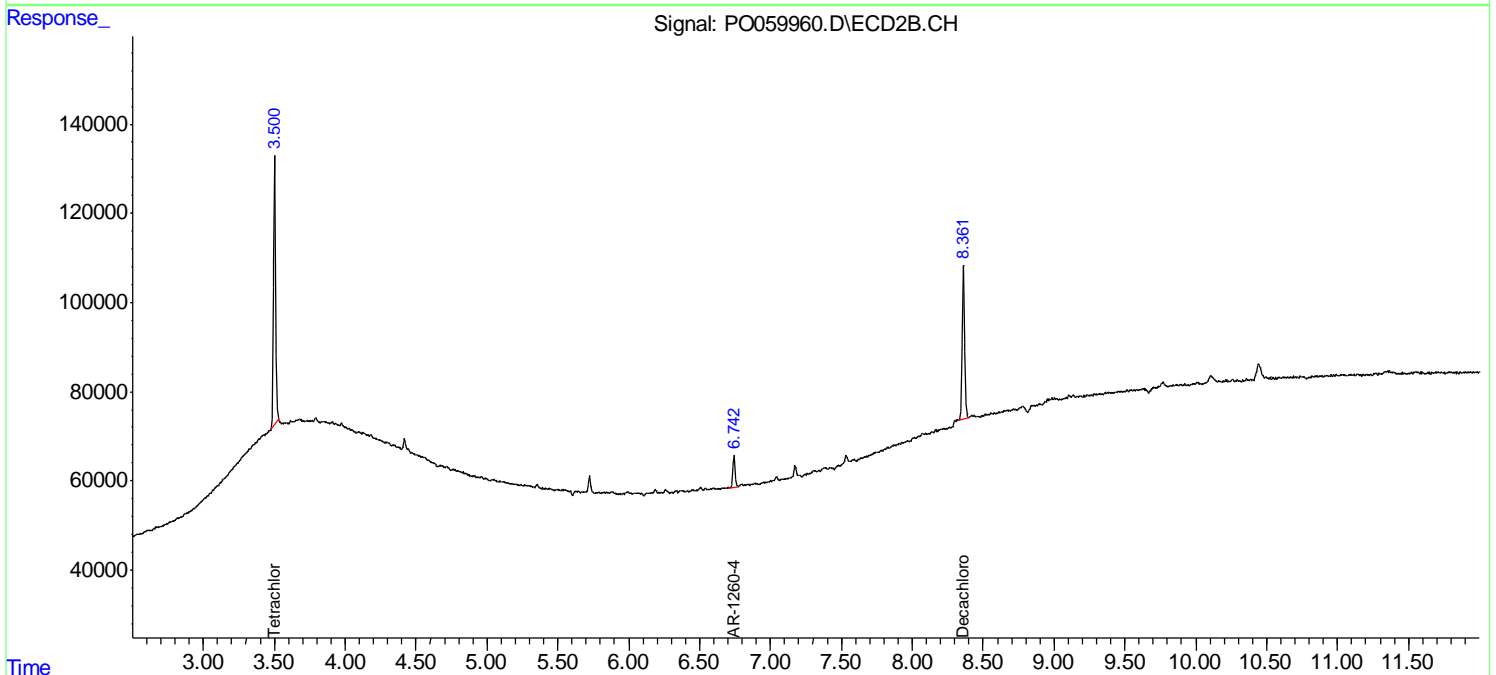
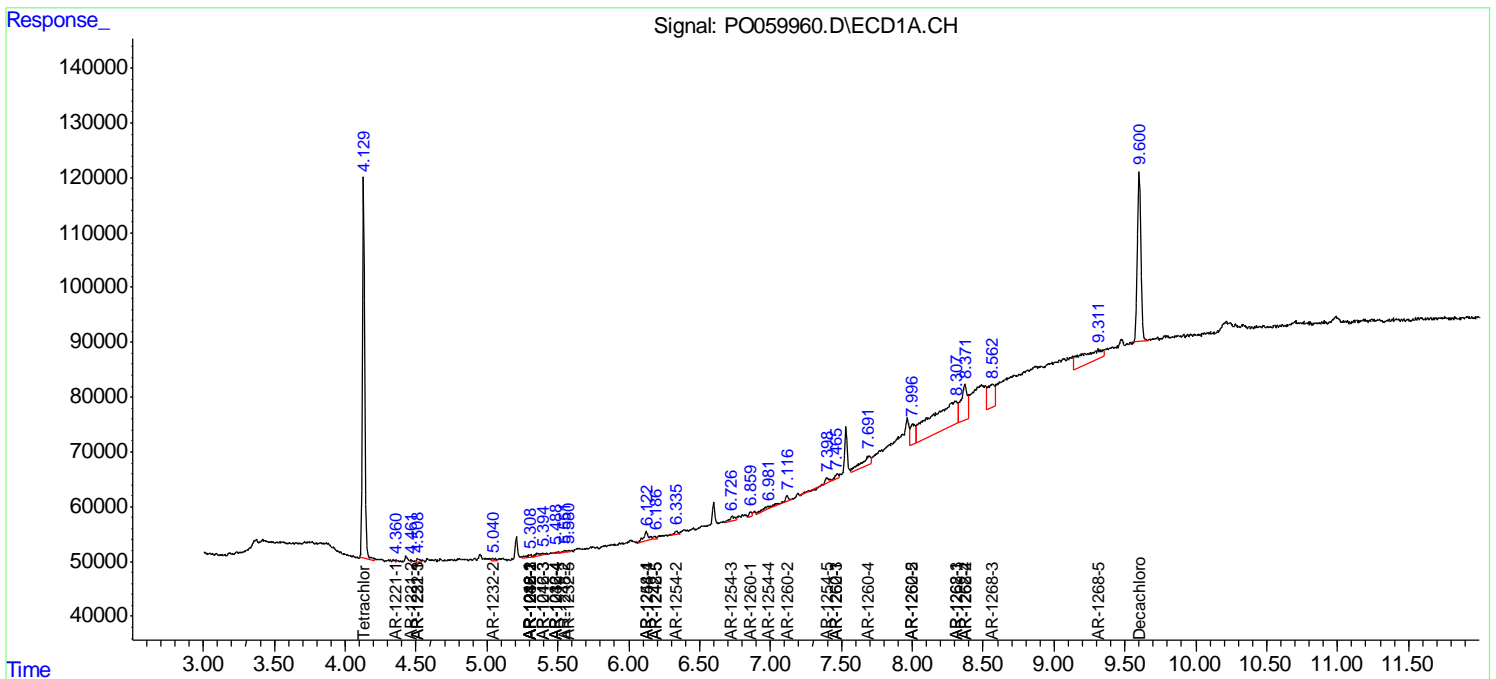
(f)=RT Delta > 1/2 Window (#)=Amounts differ by > 25% (m)=manual int.

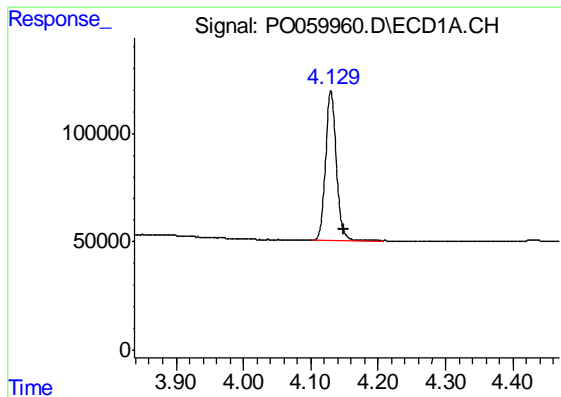
Data Path : Z:\pestpcbsrv\HPCHEM1\ECD_O\Data\PO082819\
 Data File : PO059960.D
 Signal(s) : Signal #1: ECD1A.CH Signal #2: ECD2B.CH
 Acq On : 28 Aug 2019 14:08
 Operator : SM/AJ
 Sample : K4551-01RE
 Misc :
 ALS Vial : 14 Sample Multiplier: 1

Instrument :
 ECD_O
Client Sampled :
 S401-K1-1.0-1.5-082619-FDRE

Integration File signal 1: autoint1.e
 Integration File signal 2: autoint2.e
 Quant Time: Aug 28 14:40:25 2019
 Quant Method : Z:\pestpcbsrv\HPCHEM1\ECD_O\methods\PO081719.M
 Quant Title : GC EXTRACTABLES
 QLast Update : Wed Aug 28 13:30:59 2019
 Response via : Initial Calibration
 Integrator: ChemStation 6890 Scale Mode: Small noise peaks clipped

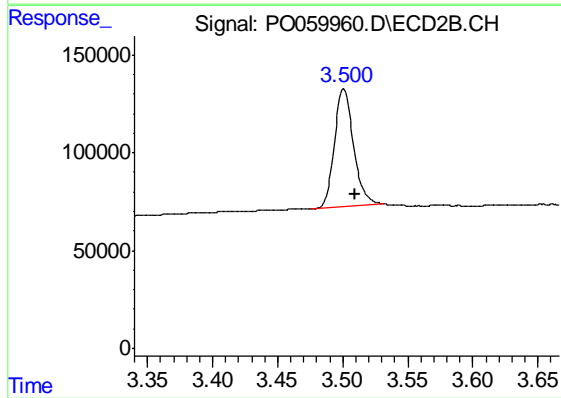
Volume Inj. : 2 µl
 Signal #1 Phase : ZB-MR1 Signal #2 Phase: ZB-MR2
 Signal #1 Info : 30Mx0.32mmx 0.50µ Signal #2 Info : 30M x 0.32mm x 0.25µm



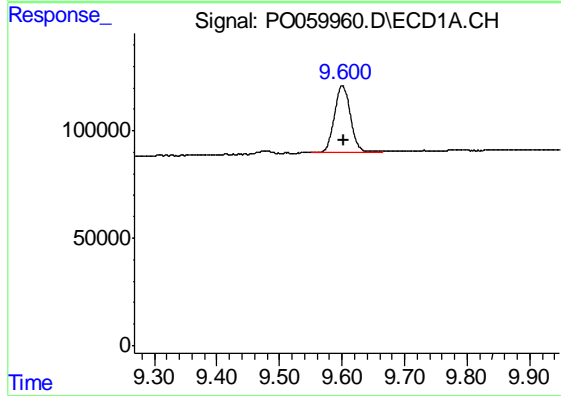


#1 Tetrachloro-m-xylene
 R.T.: 4.130 min
 Delta R.T.: -0.019 min
 Response: 772467
 Conc: 22.06 ng/ml

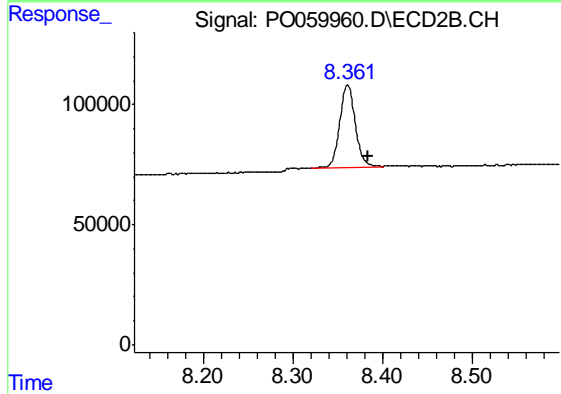
Instrument :
 ECD_O
 ClientSampleId :
 S401-K1-1.0-1.5-082619-FDRE



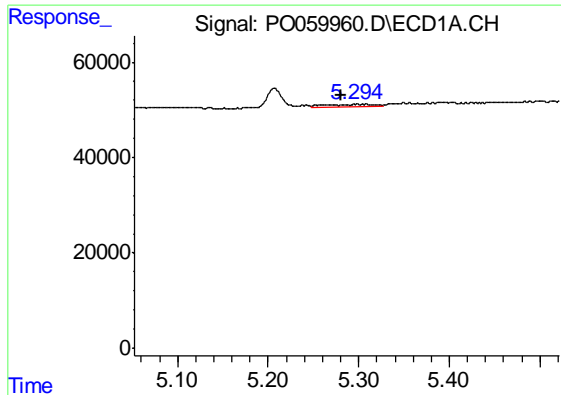
#1 Tetrachloro-m-xylene
 R.T.: 3.501 min
 Delta R.T.: -0.009 min
 Response: 609612
 Conc: 16.94 ng/ml



#2 Decachlorobiphenyl
 R.T.: 9.601 min
 Delta R.T.: -0.002 min
 Response: 543286
 Conc: 10.21 ng/ml



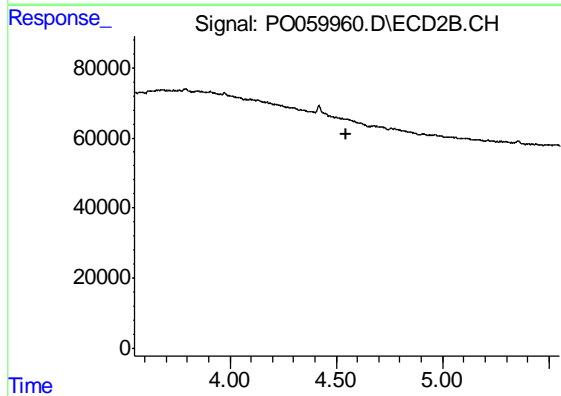
#2 Decachlorobiphenyl
 R.T.: 8.361 min
 Delta R.T.: -0.022 min
 Response: 413300
 Conc: 10.25 ng/ml



#3 AR-1016-1

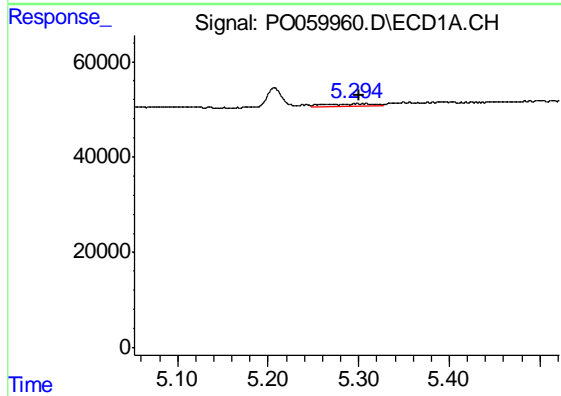
R.T.: 5.305 min
 Delta R.T.: 0.025 min
 Response: 14138
 Conc: 8.81 ng/ml

Instrument :
 ECD_O
 ClientSampleId :
 S401-K1-1.0-1.5-082619-FDRE



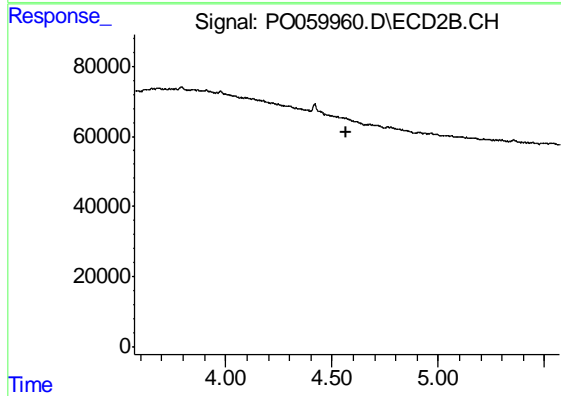
#3 AR-1016-1

R.T.: 0.000 min
 Exp R.T. : 4.550 min
 Response: 0
 Conc: N.D.



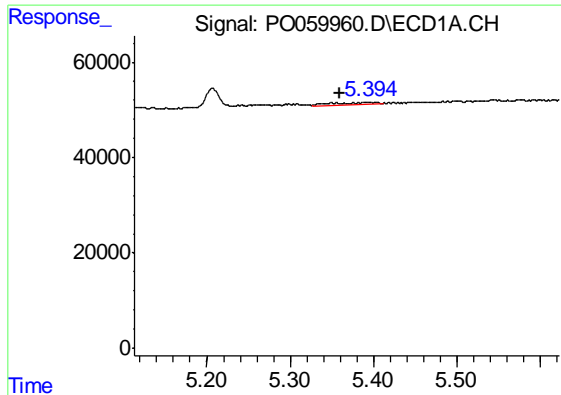
#4 AR-1016-2

R.T.: 5.305 min
 Delta R.T.: 0.005 min
 Response: 14138
 Conc: 5.91 ng/ml



#4 AR-1016-2

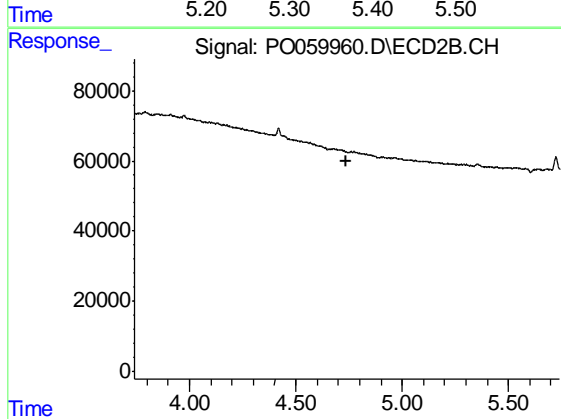
R.T.: 0.000 min
 Exp R.T. : 4.570 min
 Response: 0
 Conc: N.D.



#5 AR-1016-3

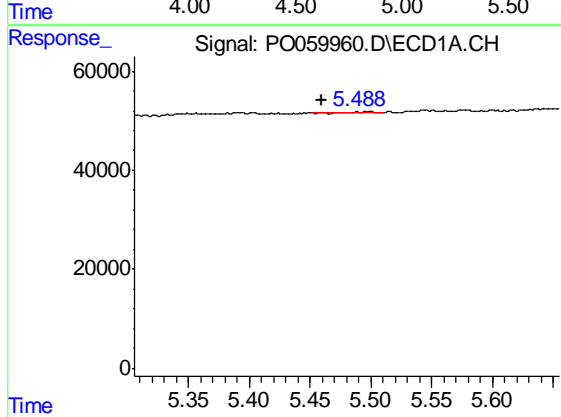
R.T.: 5.392 min
 Delta R.T.: 0.032 min
 Response: 13178
 Conc: 8.85 ng/ml

Instrument :
 ECD_O
 ClientSampleId :
 S401-K1-1.0-1.5-082619-FDRE



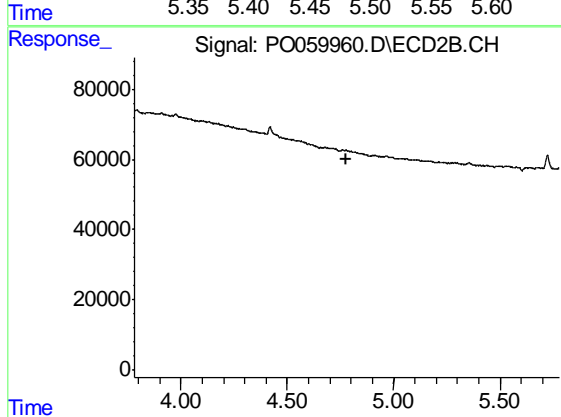
#5 AR-1016-3

R.T.: 0.000 min
 Exp R.T. : 4.740 min
 Response: 0
 Conc: N.D.



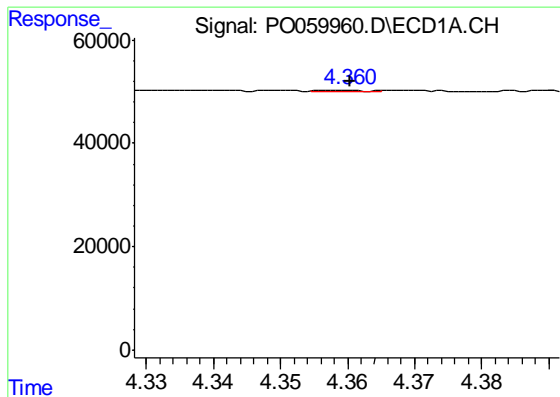
#6 AR-1016-4

R.T.: 5.489 min
 Delta R.T.: 0.029 min
 Response: 579
 Conc: 0.48 ng/ml



#6 AR-1016-4

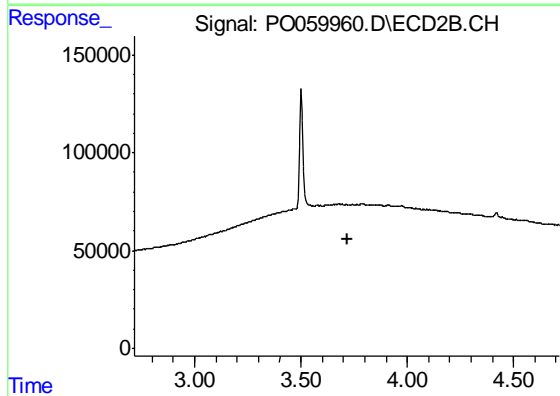
R.T.: 0.000 min
 Exp R.T. : 4.780 min
 Response: 0
 Conc: N.D.



#8 AR-1221-1

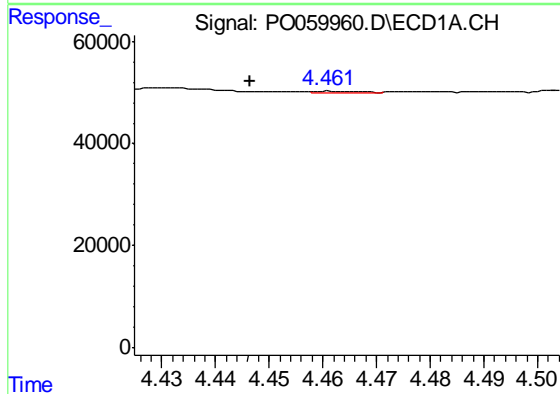
R.T.: 4.360 min
 Delta R.T.: 0.000 min
 Response: 1812
 Conc: 4.28 ng/ml

Instrument :
 ECD_O
 ClientSampleId :
 S401-K1-1.0-1.5-082619-FDRE



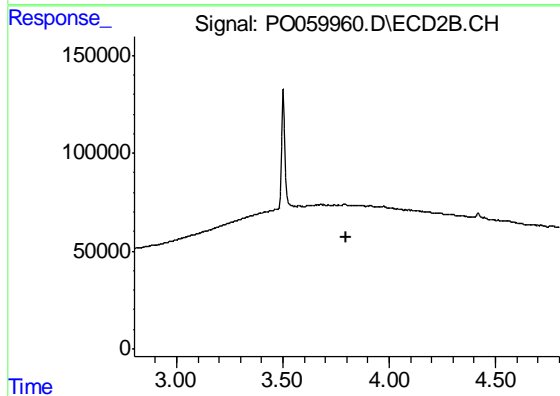
#8 AR-1221-1

R.T.: 0.000 min
 Exp R.T. : 3.717 min
 Response: 0
 Conc: N.D.



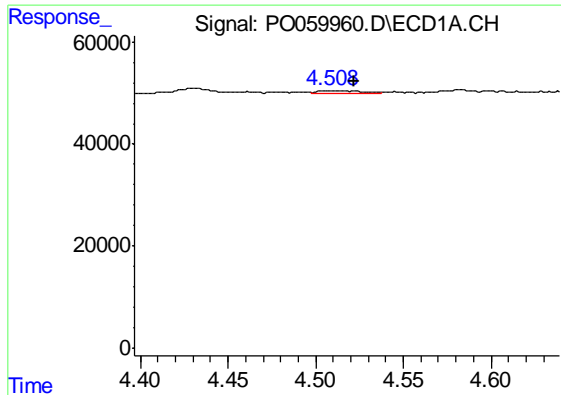
#9 AR-1221-2

R.T.: 4.461 min
 Delta R.T.: 0.015 min
 Response: 1551
 Conc: 4.78 ng/ml



#9 AR-1221-2

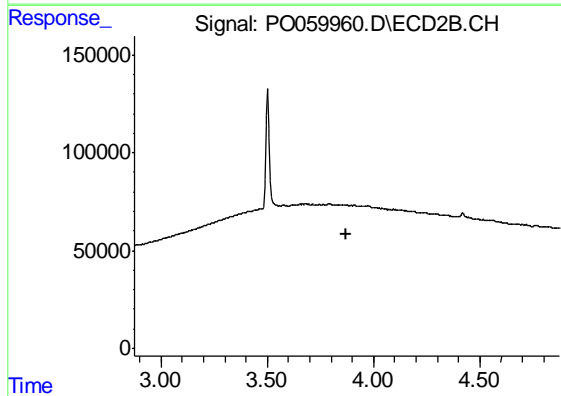
R.T.: 0.000 min
 Exp R.T. : 3.801 min
 Response: 0
 Conc: N.D.



#10 AR-1221-3

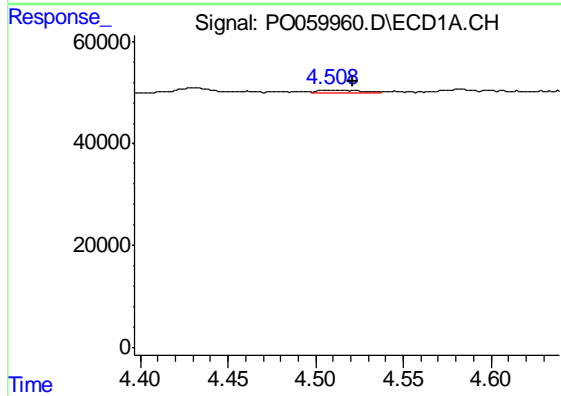
R.T.: 4.508 min
 Delta R.T.: -0.013 min
 Response: 7726
 Conc: 7.35 ng/ml

Instrument :
 ECD_O
 ClientSampleId :
 S401-K1-1.0-1.5-082619-FDRE



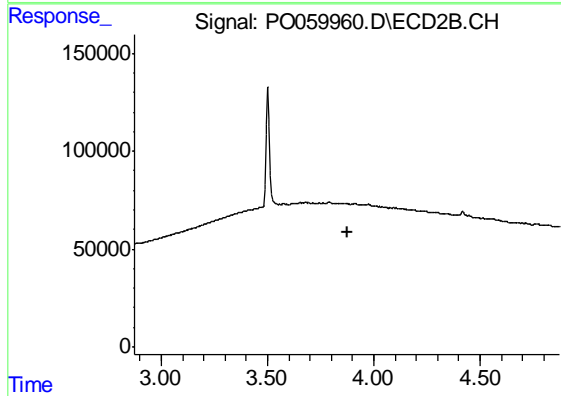
#10 AR-1221-3

R.T.: 0.000 min
 Exp R.T. : 3.874 min
 Response: 0
 Conc: N.D.



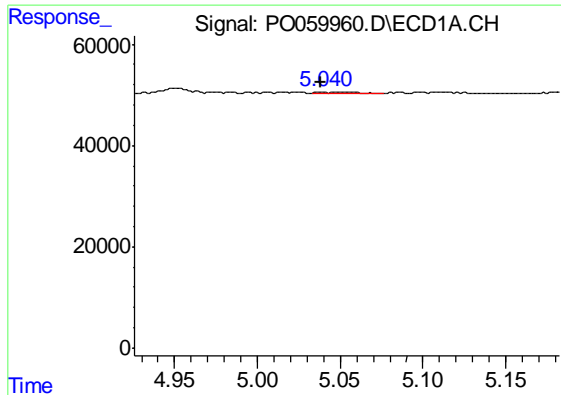
#11 AR-1232-1

R.T.: 4.508 min
 Delta R.T.: -0.013 min
 Response: 7726
 Conc: 6.20 ng/ml



#11 AR-1232-1

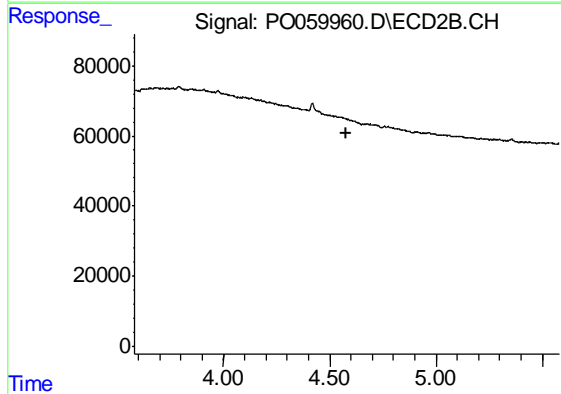
R.T.: 0.000 min
 Exp R.T. : 3.874 min
 Response: 0
 Conc: N.D.



#12 AR-1232-2

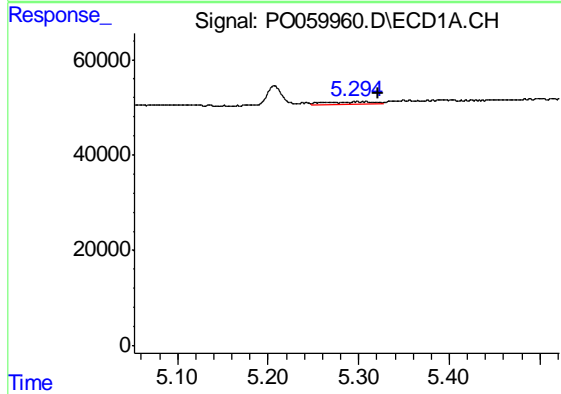
R.T.: 5.039 min
 Delta R.T.: 0.001 min
 Response: 6738
 Conc: 9.54 ng/ml

Instrument :
 ECD_O
 ClientSampleId :
 S401-K1-1.0-1.5-082619-FDRE



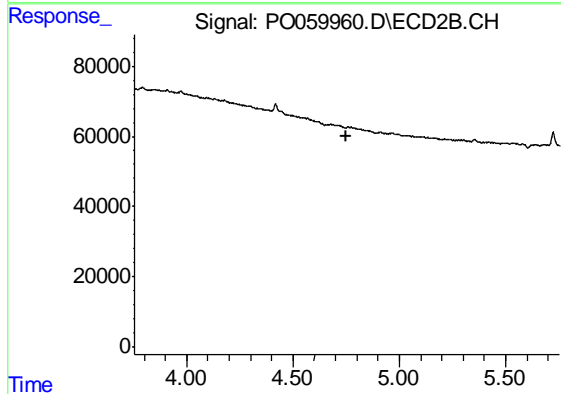
#12 AR-1232-2

R.T.: 0.000 min
 Exp R.T. : 4.581 min
 Response: 0
 Conc: N.D.



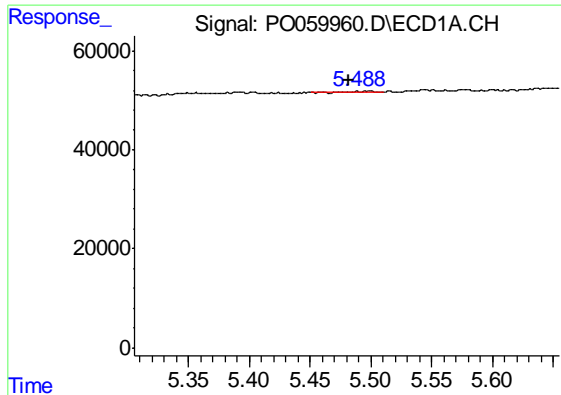
#13 AR-1232-3

R.T.: 5.305 min
 Delta R.T.: -0.017 min
 Response: 14138
 Conc: 9.23 ng/ml



#13 AR-1232-3

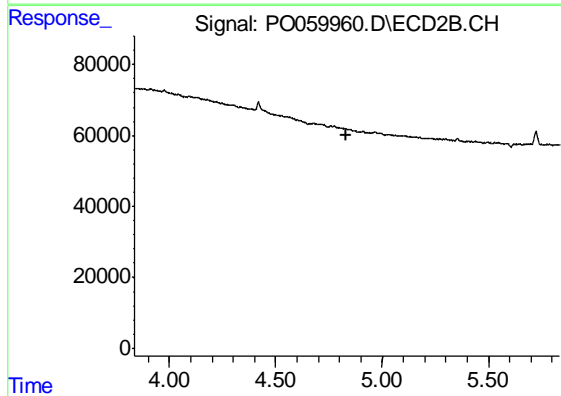
R.T.: 0.000 min
 Exp R.T. : 4.753 min
 Response: 0
 Conc: N.D.



#14 AR-1232-4

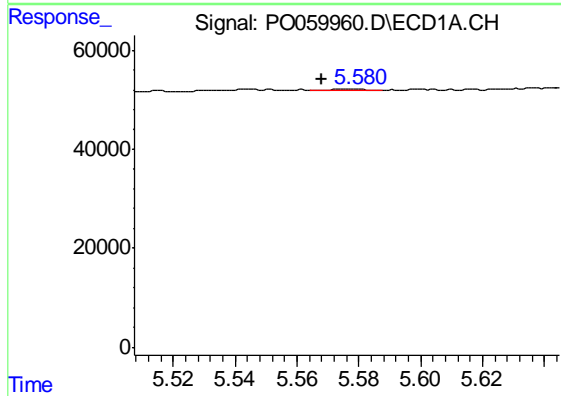
R.T.: 5.489 min
 Delta R.T.: 0.007 min
 Response: 579
 Conc: 0.74 ng/ml

Instrument :
 ECD_O
 ClientSampleId :
 S401-K1-1.0-1.5-082619-FDRE



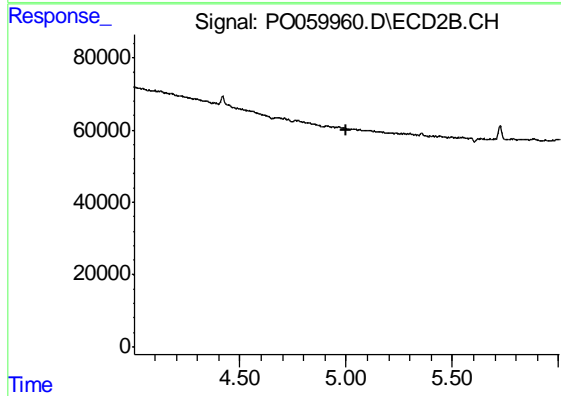
#14 AR-1232-4

R.T.: 0.000 min
 Exp R.T. : 4.834 min
 Response: 0
 Conc: N.D.



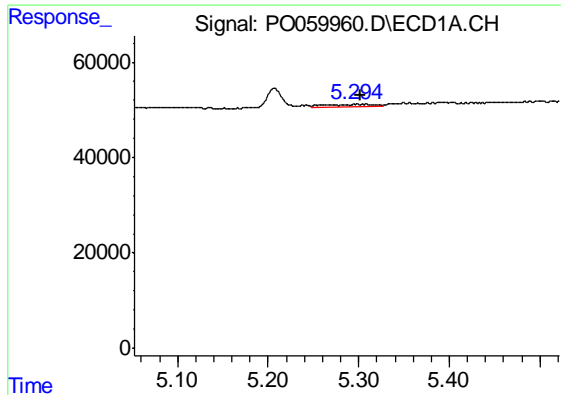
#15 AR-1232-5

R.T.: 5.577 min
 Delta R.T.: 0.009 min
 Response: 2494
 Conc: 4.15 ng/ml



#15 AR-1232-5

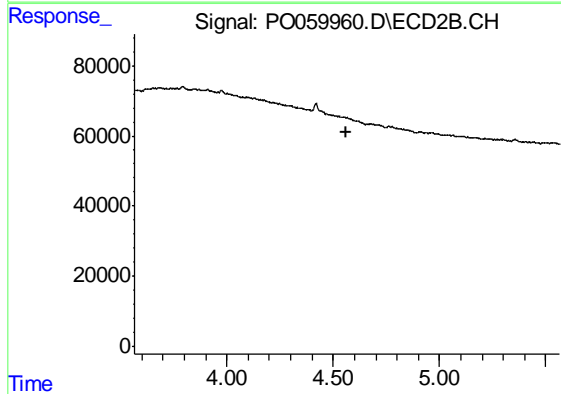
R.T.: 0.000 min
 Exp R.T. : 5.004 min
 Response: 0
 Conc: N.D.



#16 AR-1242-1

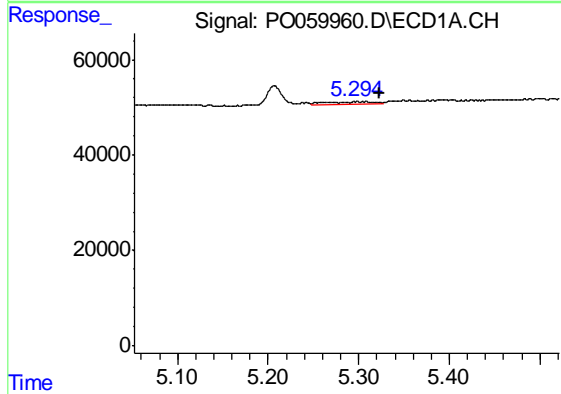
R.T.: 5.305 min
 Delta R.T.: 0.003 min
 Response: 14138
 Conc: 11.14 ng/ml

Instrument :
 ECD_O
 ClientSampleId :
 S401-K1-1.0-1.5-082619-FDRE



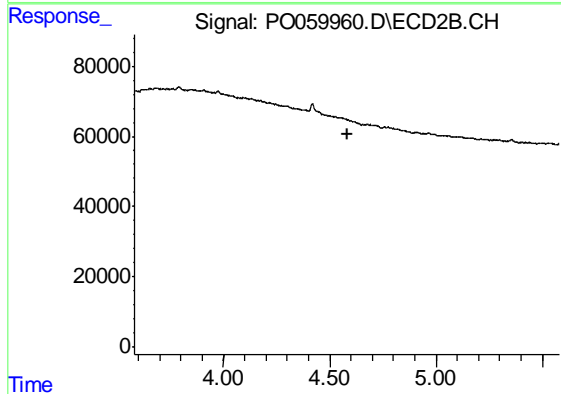
#16 AR-1242-1

R.T.: 0.000 min
 Exp R.T. : 4.564 min
 Response: 0
 Conc: N.D.



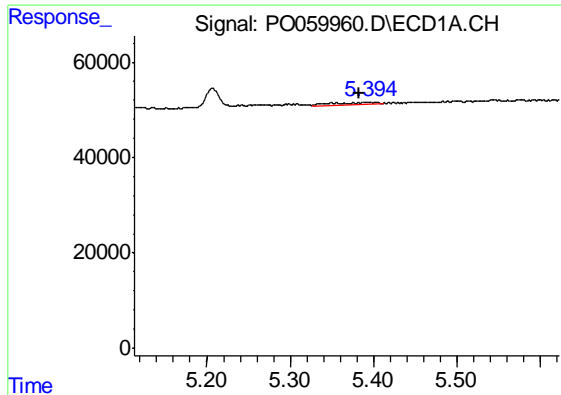
#17 AR-1242-2

R.T.: 5.305 min
 Delta R.T.: -0.018 min
 Response: 14138
 Conc: 7.62 ng/ml



#17 AR-1242-2

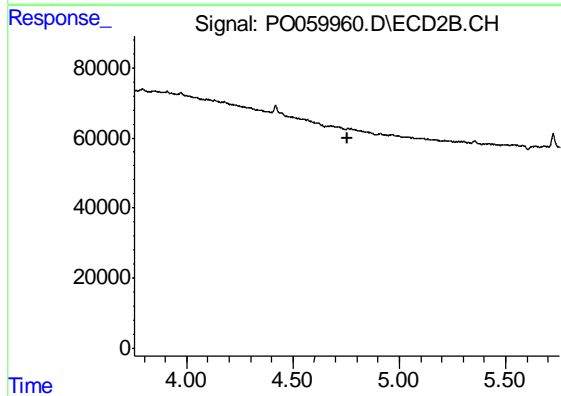
R.T.: 0.000 min
 Exp R.T. : 4.581 min
 Response: 0
 Conc: N.D.



#18 AR-1242-3

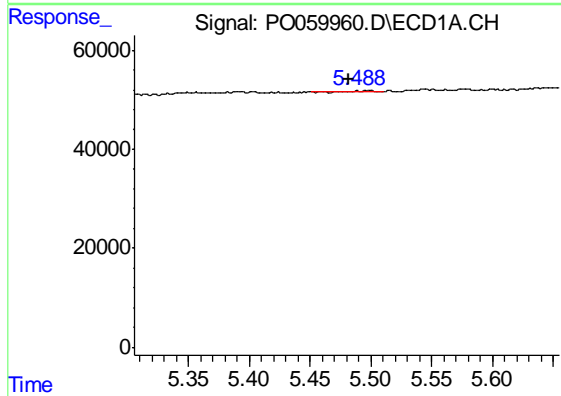
R.T.: 5.392 min
 Delta R.T.: 0.009 min
 Response: 13178
 Conc: 11.27 ng/ml

Instrument :
 ECD_O
 ClientSampleId :
 S401-K1-1.0-1.5-082619-FDRE



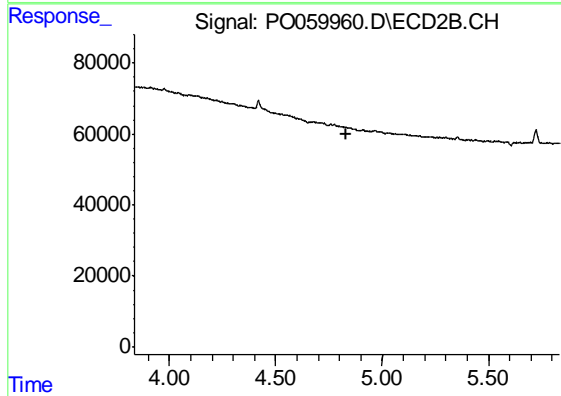
#18 AR-1242-3

R.T.: 0.000 min
 Exp R.T. : 4.754 min
 Response: 0
 Conc: N.D.



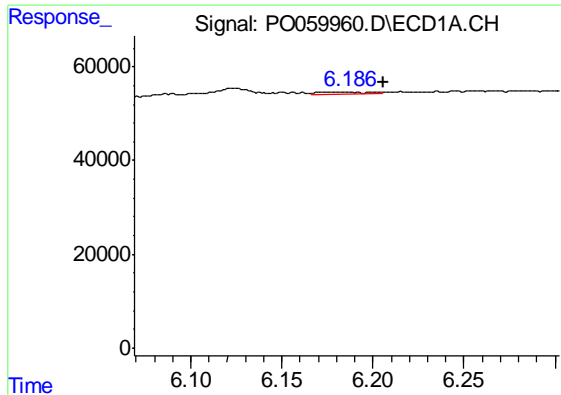
#19 AR-1242-4

R.T.: 5.489 min
 Delta R.T.: 0.007 min
 Response: 579
 Conc: 0.60 ng/ml



#19 AR-1242-4

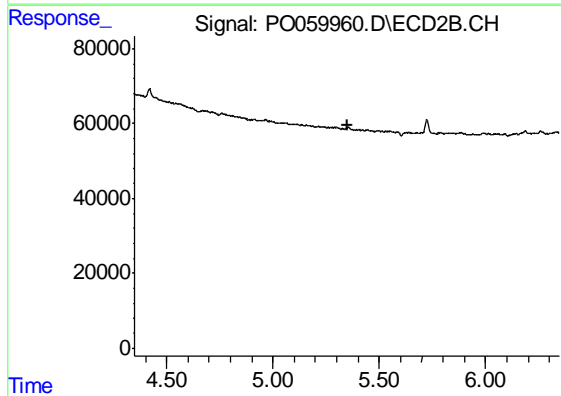
R.T.: 0.000 min
 Exp R.T. : 4.834 min
 Response: 0
 Conc: N.D.



#20 AR-1242-5

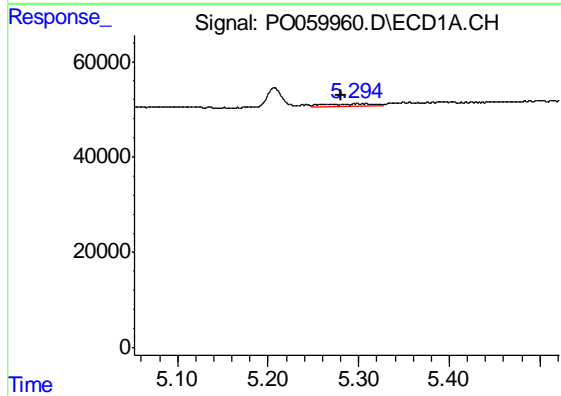
R.T.: 6.186 min
 Delta R.T.: -0.020 min
 Response: 9702
 Conc: 7.72 ng/ml

Instrument :
 ECD_O
 ClientSampleId :
 S401-K1-1.0-1.5-082619-FDRE



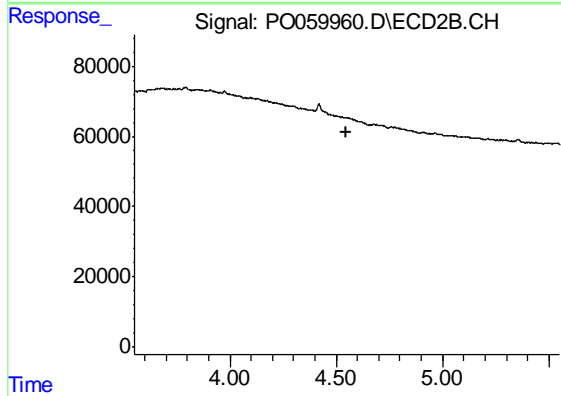
#20 AR-1242-5

R.T.: 0.000 min
 Exp R.T. : 5.348 min
 Response: 0
 Conc: N.D.



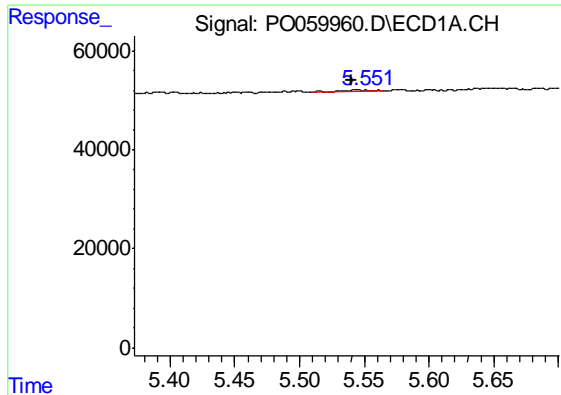
#21 AR-1248-1

R.T.: 5.305 min
 Delta R.T.: 0.025 min
 Response: 14138
 Conc: 14.10 ng/ml



#21 AR-1248-1

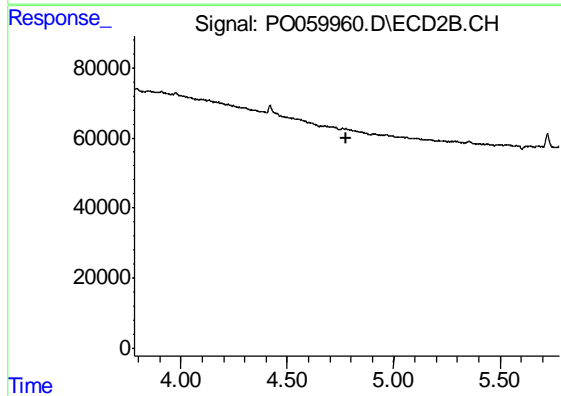
R.T.: 0.000 min
 Exp R.T. : 4.550 min
 Response: 0
 Conc: N.D.



#22 AR-1248-2

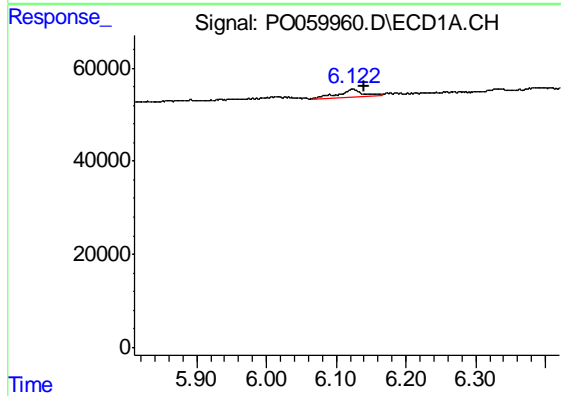
R.T.: 5.546 min
 Delta R.T.: 0.006 min
 Response: 4623
 Conc: 3.19 ng/ml

Instrument :
 ECD_O
 ClientSampleId :
 S401-K1-1.0-1.5-082619-FDRE



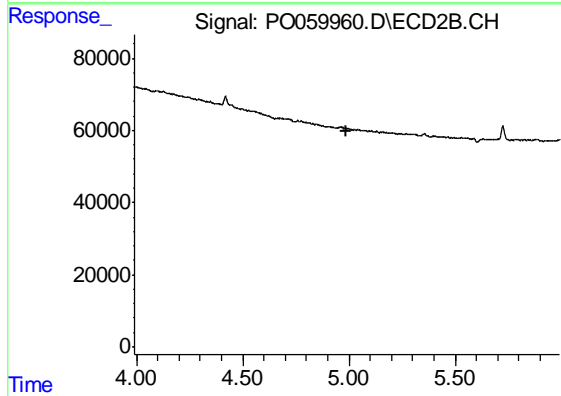
#22 AR-1248-2

R.T.: 0.000 min
 Exp R.T. : 4.780 min
 Response: 0
 Conc: N.D.



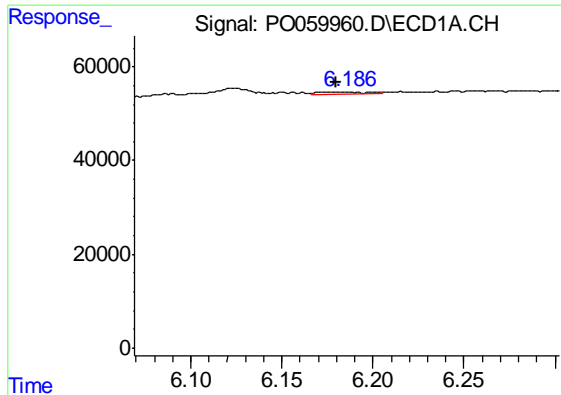
#24 AR-1248-4

R.T.: 6.124 min
 Delta R.T.: -0.016 min
 Response: 42819
 Conc: 20.95 ng/ml



#24 AR-1248-4

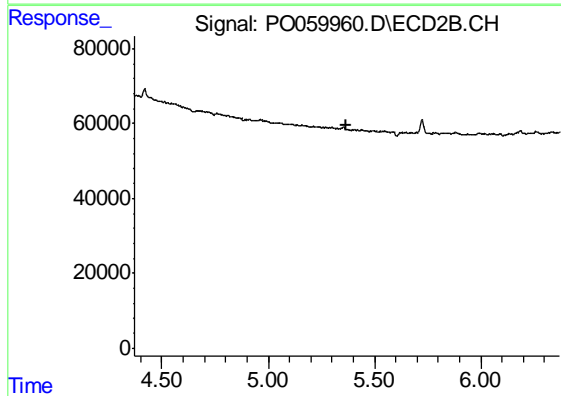
R.T.: 0.000 min
 Exp R.T. : 4.990 min
 Response: 0
 Conc: N.D.



#25 AR-1248-5

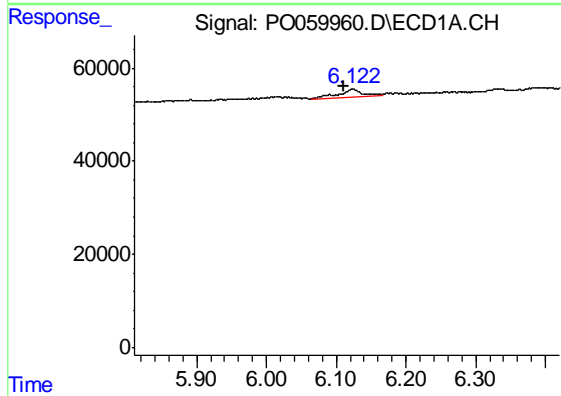
R.T.: 6.186 min
 Delta R.T.: 0.006 min
 Response: 9702
 Conc: 4.89 ng/ml

Instrument :
 ECD_O
 ClientSampled :
 S401-K1-1.0-1.5-082619-FDRE



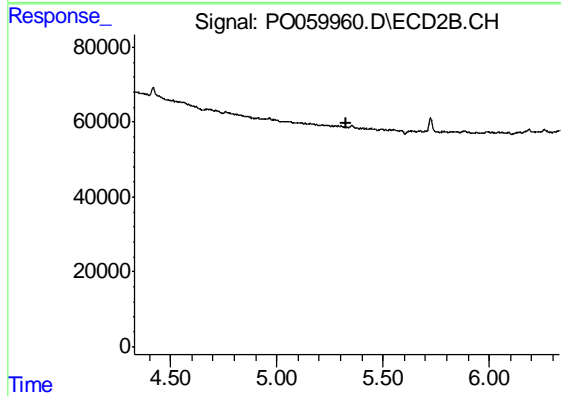
#25 AR-1248-5

R.T.: 0.000 min
 Exp R.T. : 5.370 min
 Response: 0
 Conc: N.D.



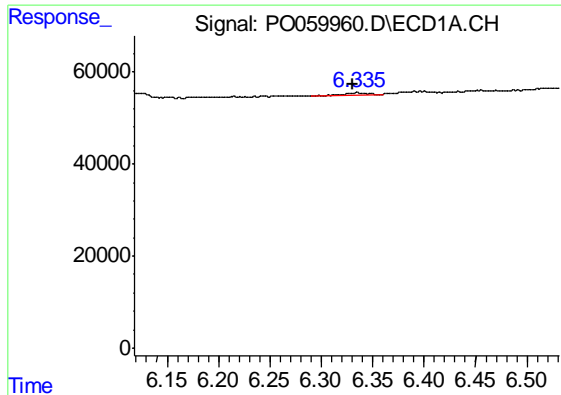
#26 AR-1254-1

R.T.: 6.124 min
 Delta R.T.: 0.014 min
 Response: 42819
 Conc: 20.52 ng/ml



#26 AR-1254-1

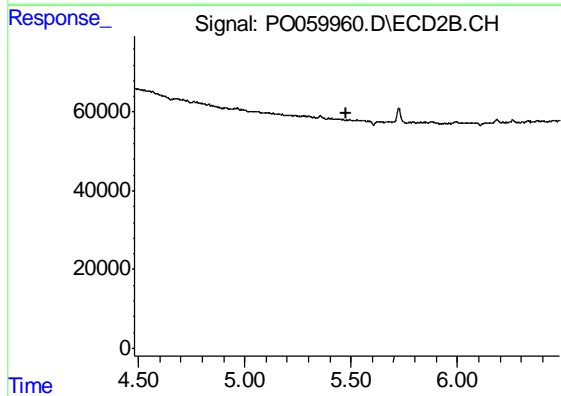
R.T.: 0.000 min
 Exp R.T. : 5.330 min
 Response: 0
 Conc: N.D.



#27 AR-1254-2

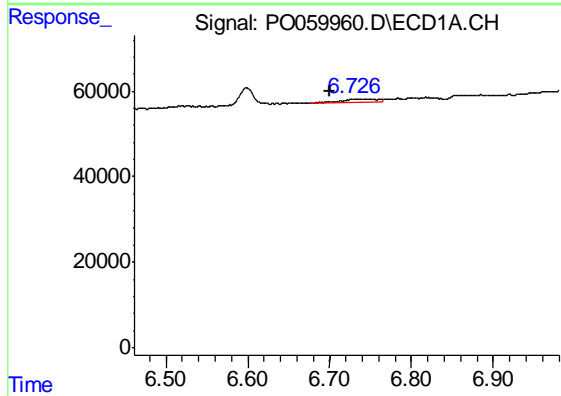
R.T.: 6.334 min
 Delta R.T.: 0.004 min
 Response: 8984
 Conc: 2.69 ng/ml

Instrument :
 ECD_O
 ClientSampleId :
 S401-K1-1.0-1.5-082619-FDRE



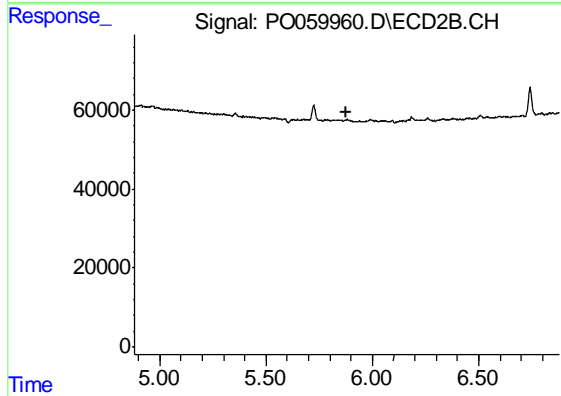
#27 AR-1254-2

R.T.: 0.000 min
 Exp R.T. : 5.480 min
 Response: 0
 Conc: N.D.



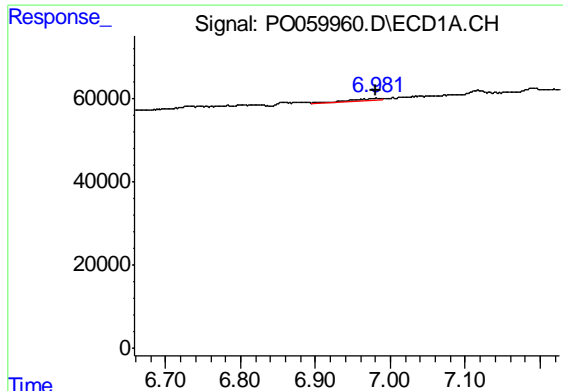
#28 AR-1254-3

R.T.: 6.730 min
 Delta R.T.: 0.030 min
 Response: 23085
 Conc: 6.51 ng/ml



#28 AR-1254-3

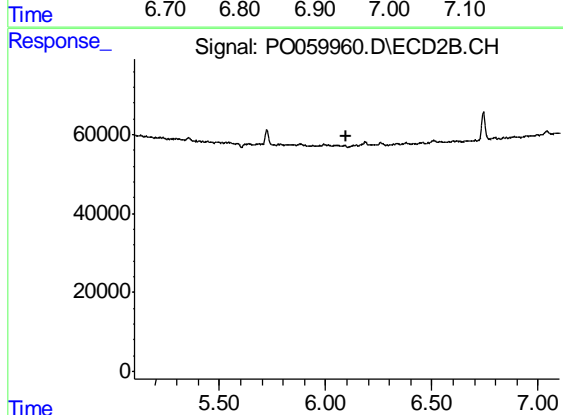
R.T.: 0.000 min
 Exp R.T. : 5.880 min
 Response: 0
 Conc: N.D.



#29 AR-1254-4

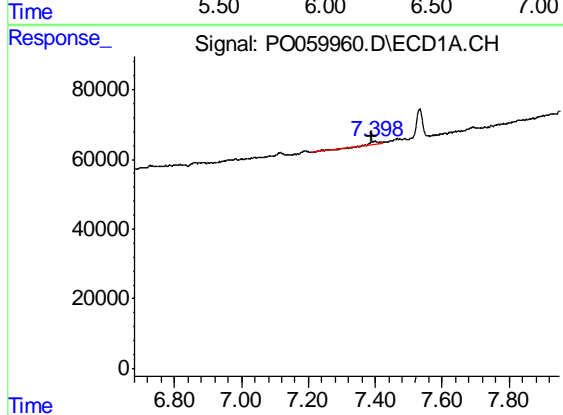
R.T.: 6.982 min
 Delta R.T.: 0.002 min
 Response: 18657
 Conc: 6.33 ng/ml

Instrument :
 ECD_O
 ClientSampleId :
 S401-K1-1.0-1.5-082619-FDRE



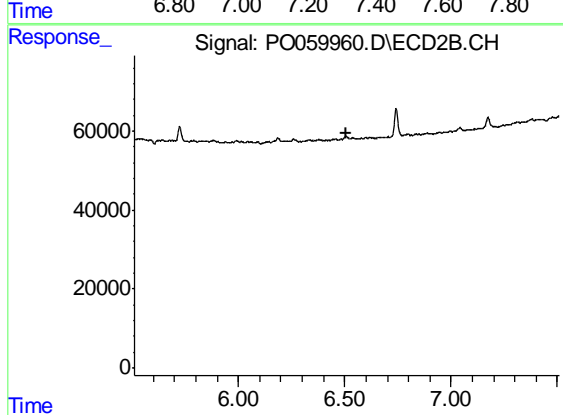
#29 AR-1254-4

R.T.: 0.000 min
 Exp R.T. : 6.100 min
 Response: 0
 Conc: N.D.



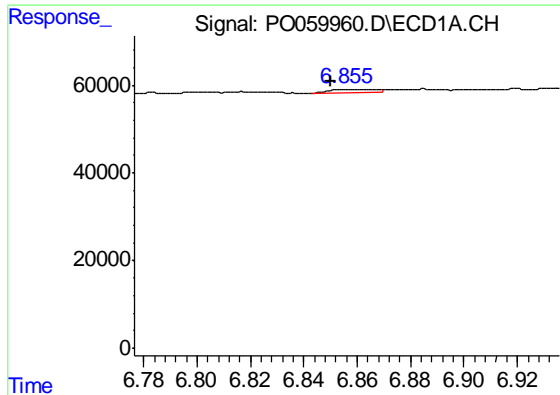
#30 AR-1254-5

R.T.: 7.398 min
 Delta R.T.: 0.008 min
 Response: 25285
 Conc: 8.18 ng/ml



#30 AR-1254-5

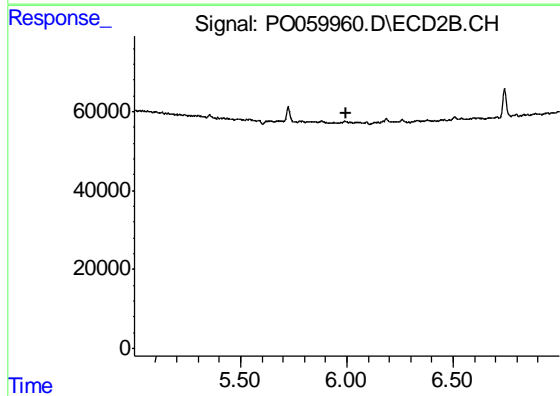
R.T.: 0.000 min
 Exp R.T. : 6.510 min
 Response: 0
 Conc: N.D.



#31 AR-1260-1

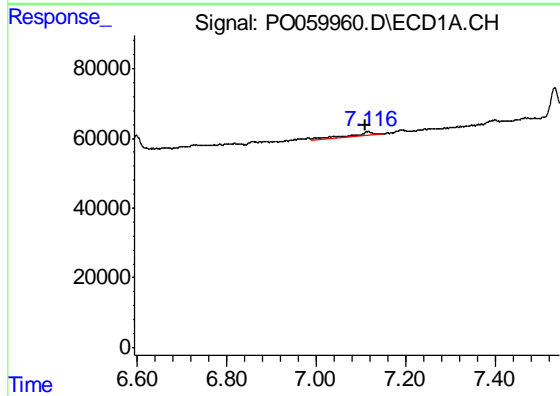
R.T.: 6.860 min
 Delta R.T.: 0.010 min
 Response: 9541
 Conc: 3.54 ng/ml

Instrument :
 ECD_O
 ClientSampleId :
 S401-K1-1.0-1.5-082619-FDRE



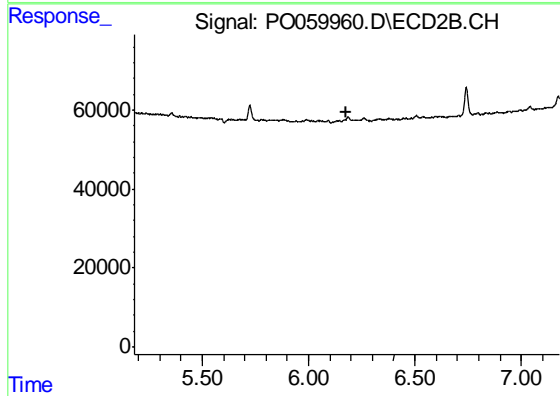
#31 AR-1260-1

R.T.: 0.000 min
 Exp R.T. : 6.000 min
 Response: 0
 Conc: N.D.



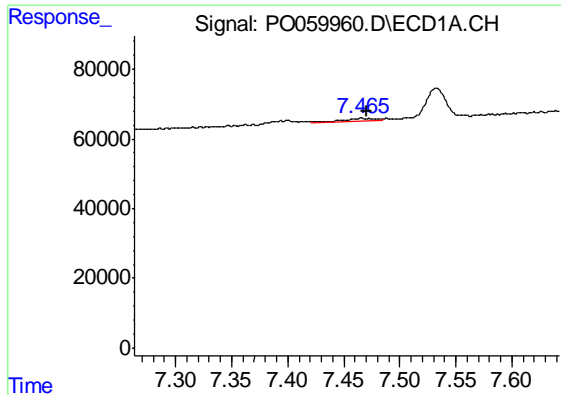
#32 AR-1260-2

R.T.: 7.116 min
 Delta R.T.: 0.006 min
 Response: 31943
 Conc: 8.61 ng/ml



#32 AR-1260-2

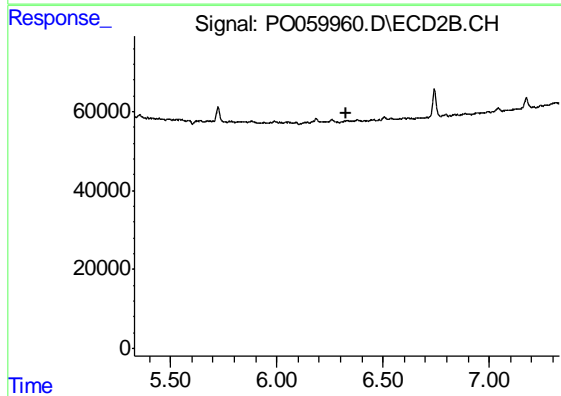
R.T.: 0.000 min
 Exp R.T. : 6.180 min
 Response: 0
 Conc: N.D.



#33 AR-1260-3

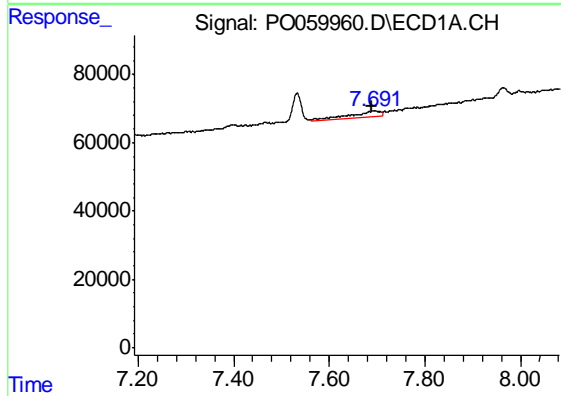
R.T.: 7.466 min
 Delta R.T.: -0.004 min
 Response: 19169
 Conc: 5.85 ng/ml

Instrument :
 ECD_O
 ClientSampleId :
 S401-K1-1.0-1.5-082619-FDRE



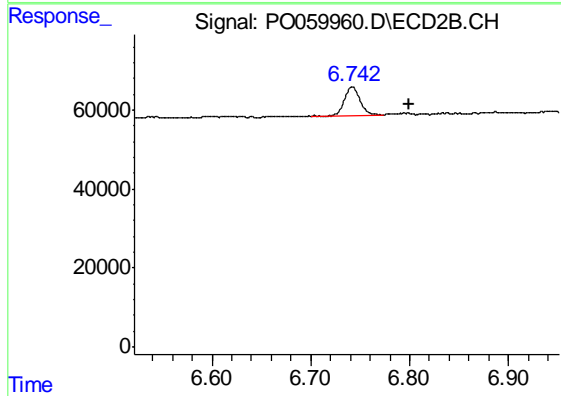
#33 AR-1260-3

R.T.: 0.000 min
 Exp R.T. : 6.330 min
 Response: 0
 Conc: N.D.



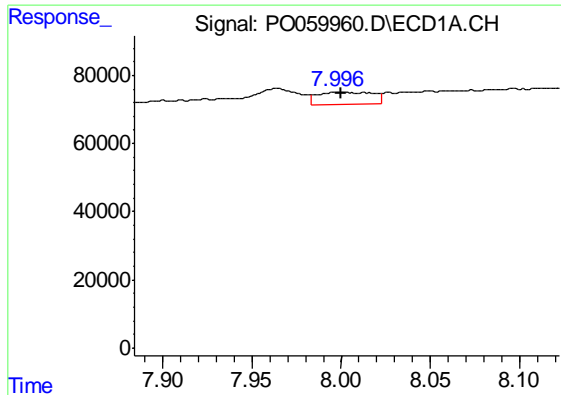
#34 AR-1260-4

R.T.: 7.694 min
 Delta R.T.: 0.004 min
 Response: 77075
 Conc: 25.09 ng/ml



#34 AR-1260-4

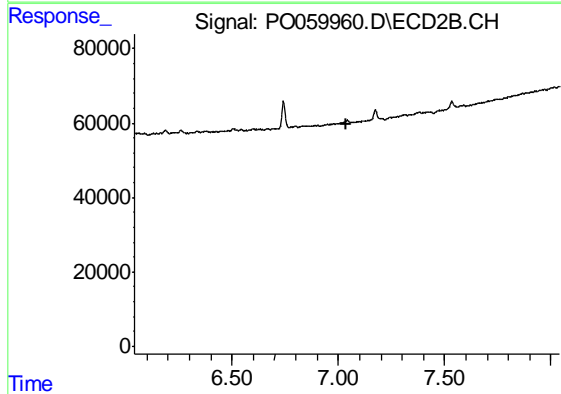
R.T.: 6.742 min
 Delta R.T.: -0.058 min
 Response: 77128
 Conc: 34.09 ng/ml



#35 AR-1260-5

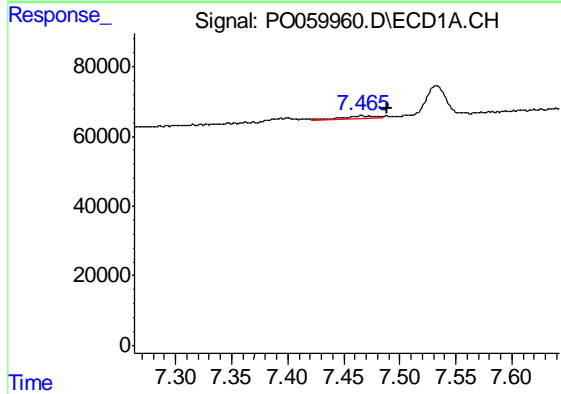
R.T.: 7.999 min
 Delta R.T.: -0.001 min
 Response: 80439
 Conc: 11.36 ng/ml

Instrument :
 ECD_O
 ClientSampleId :
 S401-K1-1.0-1.5-082619-FDRE



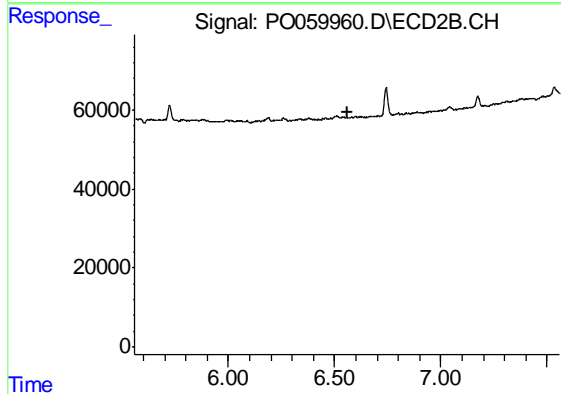
#35 AR-1260-5

R.T.: 0.000 min
 Exp R.T. : 7.040 min
 Response: 0
 Conc: N.D.



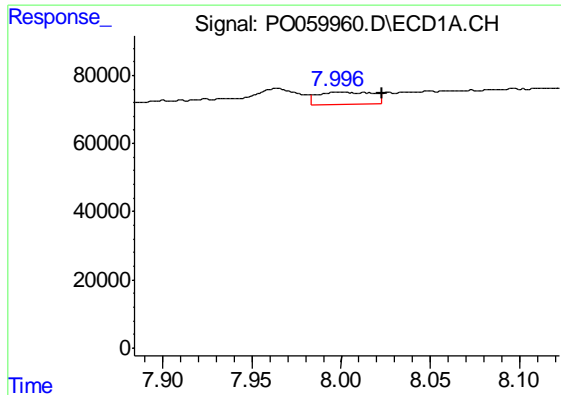
#36 AR-1262-1

R.T.: 7.466 min
 Delta R.T.: -0.023 min
 Response: 19169
 Conc: 3.95 ng/ml



#36 AR-1262-1

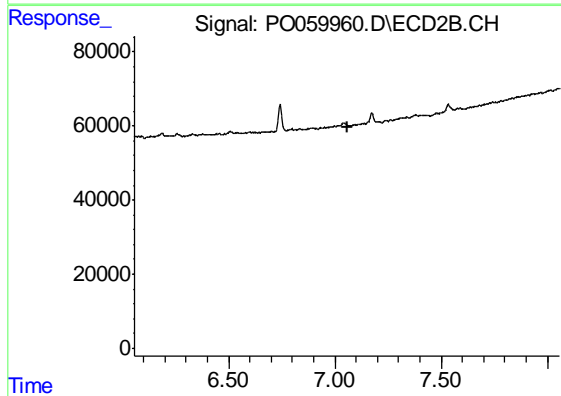
R.T.: 0.000 min
 Exp R.T. : 6.558 min
 Response: 0
 Conc: N.D.



#37 AR-1262-2

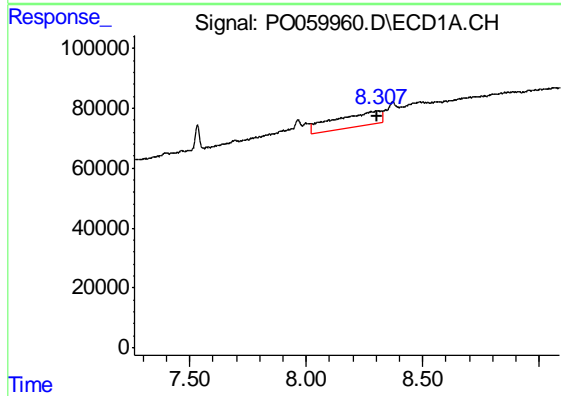
R.T.: 7.999 min
 Delta R.T.: -0.024 min
 Response: 80439
 Conc: 10.43 ng/ml

Instrument :
 ECD_O
 ClientSampleId :
 S401-K1-1.0-1.5-082619-FDRE



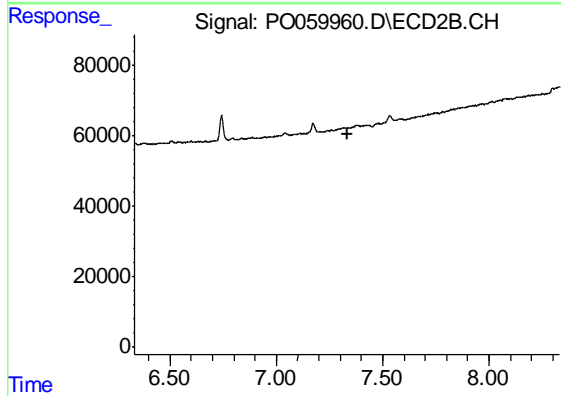
#37 AR-1262-2

R.T.: 0.000 min
 Exp R.T. : 7.057 min
 Response: 0
 Conc: N.D.



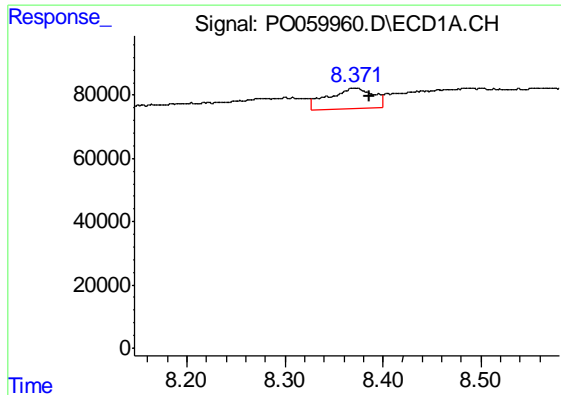
#38 AR-1262-3

R.T.: 8.300 min
 Delta R.T.: -0.003 min
 Response: 654416
 Conc: 128.26 ng/ml



#38 AR-1262-3

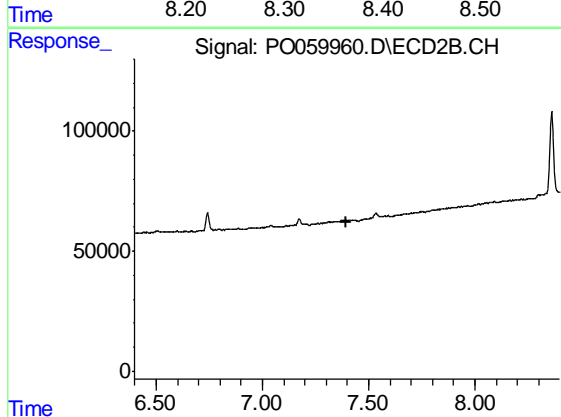
R.T.: 0.000 min
 Exp R.T. : 7.332 min
 Response: 0
 Conc: N.D.



#39 AR-1262-4

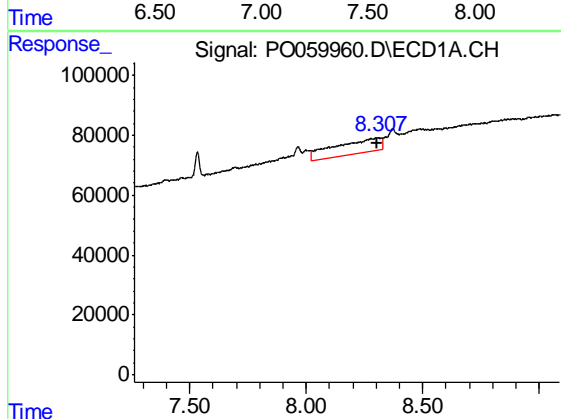
R.T.: 8.372 min
 Delta R.T.: -0.015 min
 Response: 206496
 Conc: 53.57 ng/ml

Instrument :
 ECD_O
 ClientSampleId :
 S401-K1-1.0-1.5-082619-FDRE



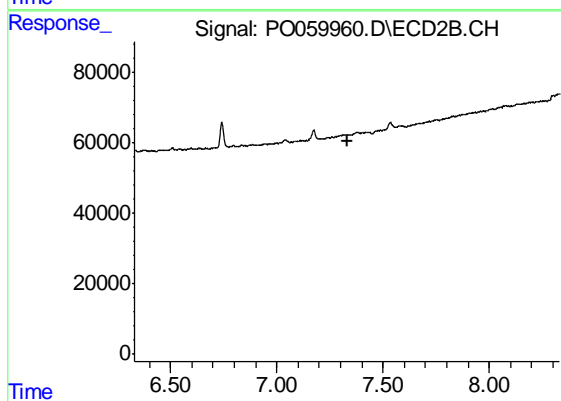
#39 AR-1262-4

R.T.: 0.000 min
 Exp R.T. : 7.398 min
 Response: 0
 Conc: N.D.



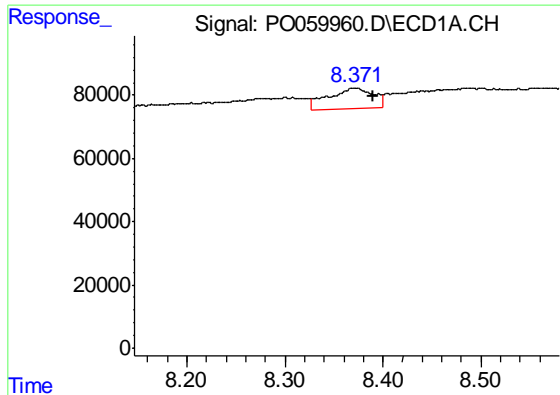
#41 AR-1268-1

R.T.: 8.300 min
 Delta R.T.: -0.002 min
 Response: 654416
 Conc: 69.54 ng/ml



#41 AR-1268-1

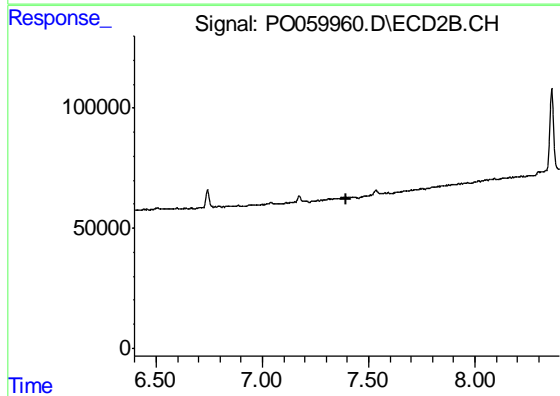
R.T.: 0.000 min
 Exp R.T. : 7.330 min
 Response: 0
 Conc: N.D.



#42 AR-1268-2

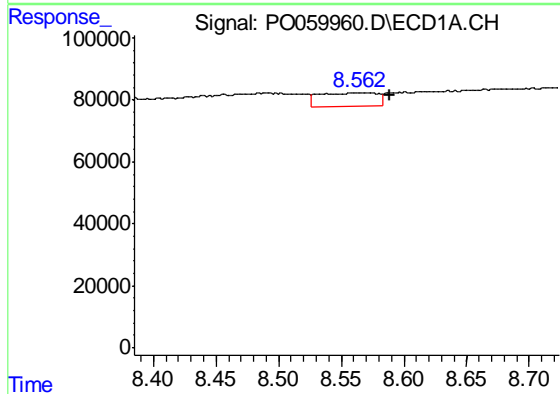
R.T.: 8.372 min
 Delta R.T.: -0.018 min
 Response: 206496
 Conc: 26.20 ng/ml

Instrument :
 ECD_O
 ClientSampleId :
 S401-K1-1.0-1.5-082619-FDRE



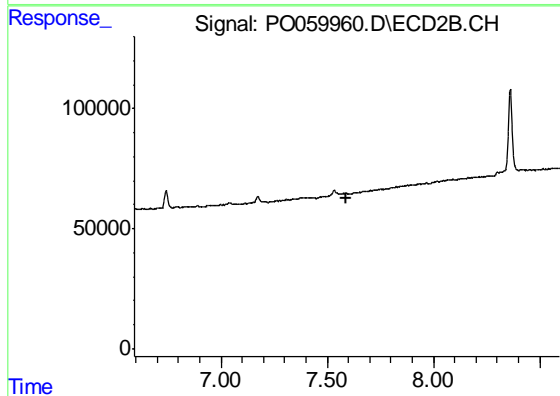
#42 AR-1268-2

R.T.: 0.000 min
 Exp R.T. : 7.397 min
 Response: 0
 Conc: N.D.



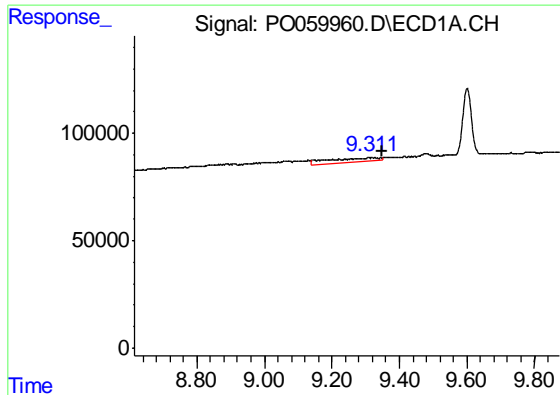
#43 AR-1268-3

R.T.: 8.563 min
 Delta R.T.: -0.026 min
 Response: 136686
 Conc: 19.39 ng/ml



#43 AR-1268-3

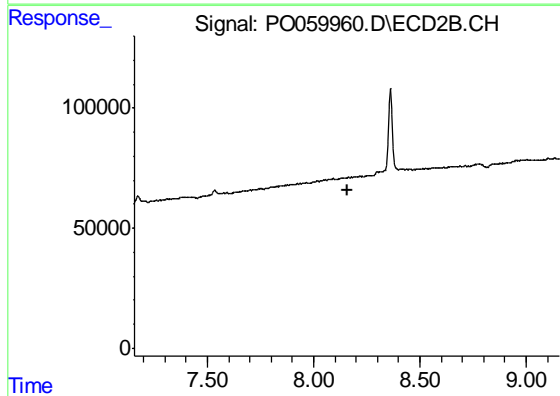
R.T.: 0.000 min
 Exp R.T. : 7.592 min
 Response: 0
 Conc: N.D.



#45 AR-1268-5

R.T.: 9.310 min
Delta R.T.: -0.040 min
Response: 220194
Conc: 11.94 ng/ml

Instrument :
ECD_O
ClientSampleId :
S401-K1-1.0-1.5-082619-FDRE



#45 AR-1268-5

R.T.: 0.000 min
Exp R.T. : 8.157 min
Response: 0
Conc: N.D.