

Data Path : Z:\pestpcbsrv\HPCHEM1\ECD\_0\Data\P0082819\  
 Data File : P0059969.D  
 Signal(s) : Signal #1: ECD1A.CH Signal #2: ECD2B.CH  
 Acq On : 28 Aug 2019 16:44  
 Operator : SM/AJ  
 Sample : K4536-07RE  
 Misc :  
 ALS Vial : 18 Sample Multiplier: 1

Instrument :  
 ECD\_0  
 ClientSampleId :  
 SB-1-30-32RE

Manual Integrations  
 APPROVED

Ankita  
 8/29/2019 2:01:42 PM

Integration File signal 1: autoint1.e  
 Integration File signal 2: autoint2.e  
 Quant Time: Aug 28 18:14:52 2019  
 Quant Method : Z:\pestpcbsrv\HPCHEM1\ECD\_0\methods\P0081719.M  
 Quant Title : GC EXTRACTABLES  
 QLast Update : Wed Aug 28 13:30:59 2019  
 Response via : Initial Calibration  
 Integrator: ChemStation 6890 Scale Mode: Small noise peaks clipped

Volume Inj. : 2 µl  
 Signal #1 Phase : ZB-MR1 Signal #2 Phase: ZB-MR2  
 Signal #1 Info : 30Mx0.32mmx 0.50µ Signal #2 Info : 30M x 0.32mm x 0.25µm

Compound	RT#1	RT#2	Resp#1	Resp#2	ng/ml	ng/ml
----------	------	------	--------	--------	-------	-------

-----  
 System Monitoring Compounds

1) SA Tetrachlo...	4.123	3.498	712020	630985	20.336m	17.529m
2) SA Decachlor...	9.593	8.357	618828	446983	11.632	11.086

Target Compounds  
 -----

(f)=RT Delta > 1/2 Window (#)=Amounts differ by > 25% (m)=manual int.

Data Path : Z:\pestpcbsrv\HPCHEM1\ECD\_O\Data\PO082819\  
 Data File : PO059969.D  
 Signal(s) : Signal #1: ECD1A.CH Signal #2: ECD2B.CH  
 Acq On : 28 Aug 2019 16:44  
 Operator : SM/AJ  
 Sample : K4536-07RE  
 Misc :  
 ALS Vial : 18 Sample Multiplier: 1

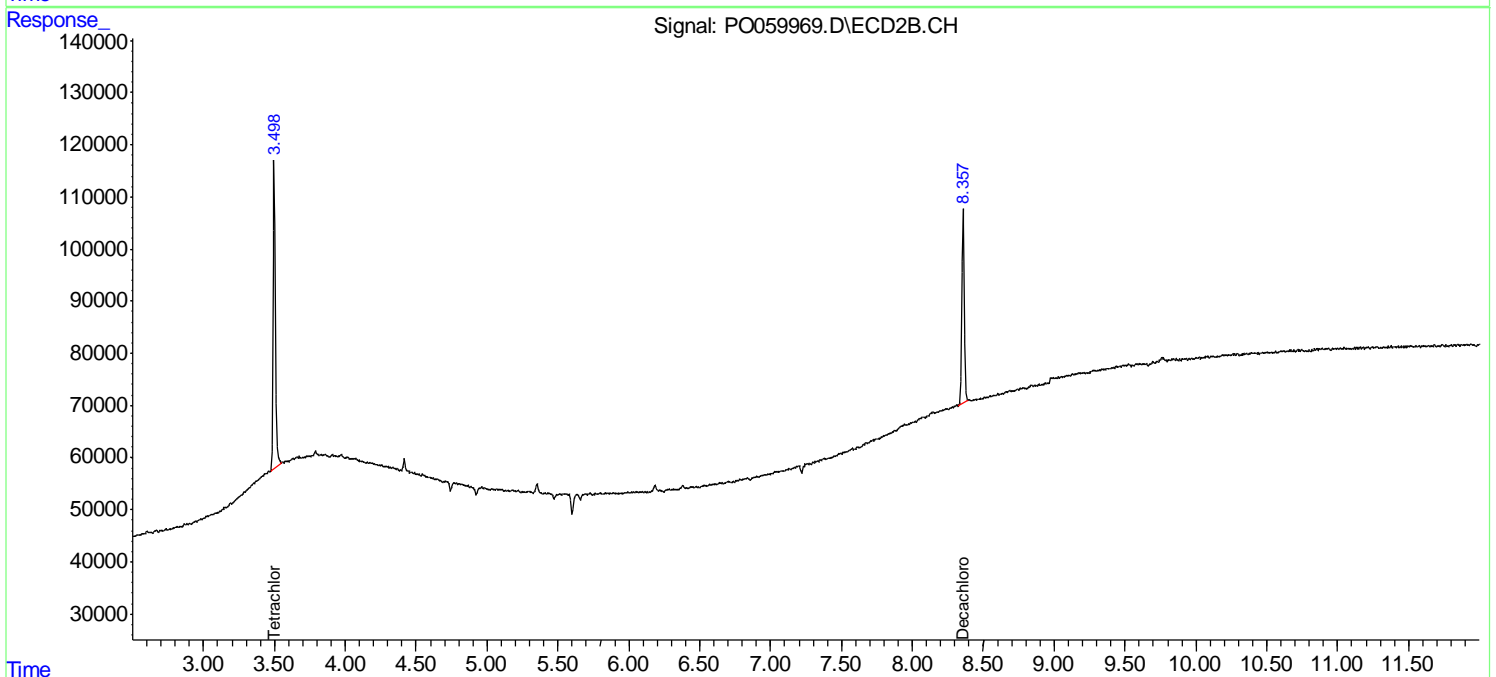
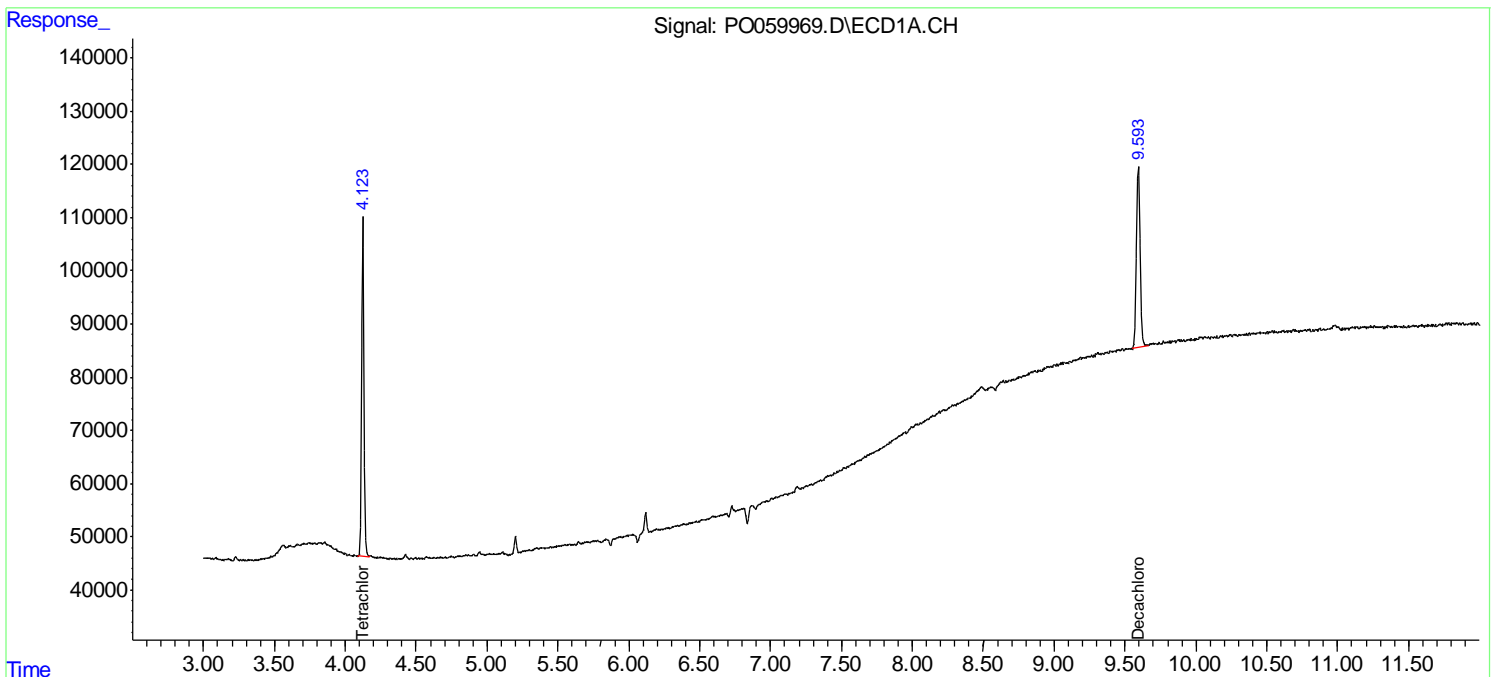
Instrument :  
 ECD\_O  
 ClientSampled :  
 SB-1-30-32RE

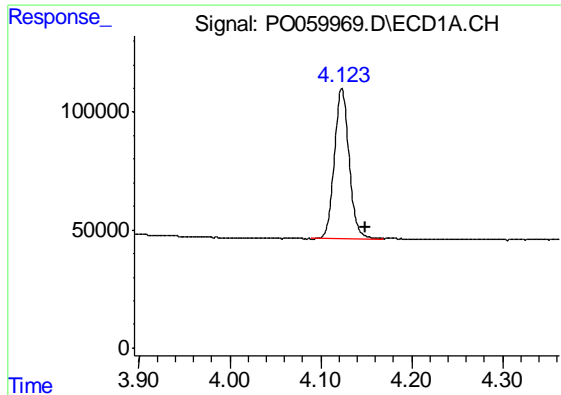
Manual Integrations  
 APPROVED

Ankita  
 8/29/2019 2:01:42 PM

Integration File signal 1: autoint1.e  
 Integration File signal 2: autoint2.e  
 Quant Time: Aug 28 18:14:52 2019  
 Quant Method : Z:\pestpcbsrv\HPCHEM1\ECD\_O\methods\PO081719.M  
 Quant Title : GC EXTRACTABLES  
 QLast Update : Wed Aug 28 13:30:59 2019  
 Response via : Initial Calibration  
 Integrator: ChemStation 6890 Scale Mode: Small noise peaks clipped

Volume Inj. : 2 µl  
 Signal #1 Phase : ZB-MR1 Signal #2 Phase: ZB-MR2  
 Signal #1 Info : 30Mx0.32mmx 0.50µ Signal #2 Info : 30M x 0.32mm x 0.25µm



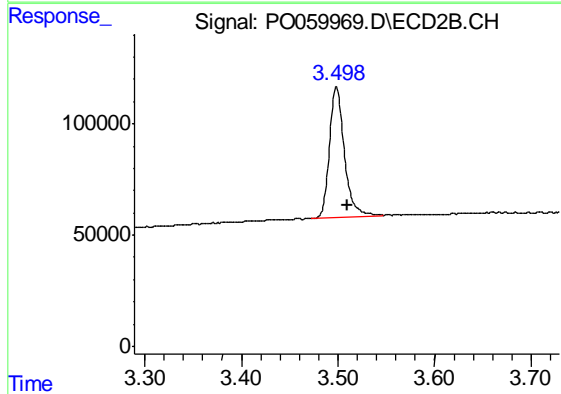


#1 Tetrachloro-m-xylene  
 R.T.: 4.123 min  
 Delta R.T.: -0.026 min  
 Response: 712020  
 Conc: 20.34 ng/ml m

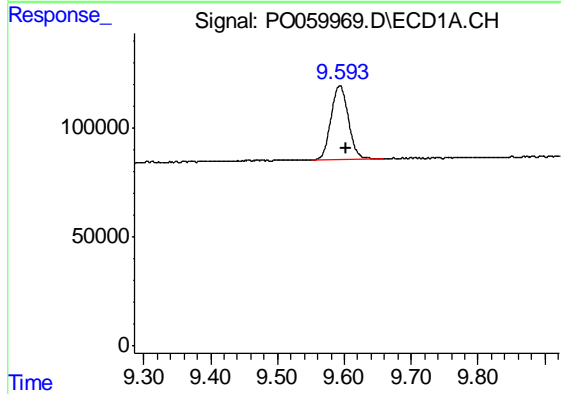
Instrument :  
 ECD\_O  
 ClientSampleId :  
 SB-1-30-32RE

Manual Integrations  
 APPROVED

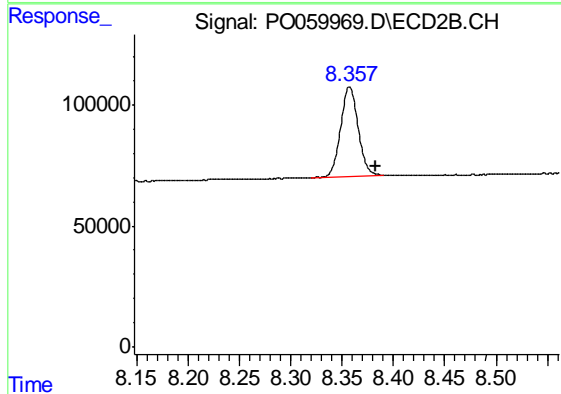
Ankita  
 8/29/2019 2:01:42 PM



#1 Tetrachloro-m-xylene  
 R.T.: 3.498 min  
 Delta R.T.: -0.012 min  
 Response: 630985  
 Conc: 17.53 ng/ml m



#2 Decachlorobiphenyl  
 R.T.: 9.593 min  
 Delta R.T.: -0.010 min  
 Response: 618828  
 Conc: 11.63 ng/ml



#2 Decachlorobiphenyl  
 R.T.: 8.357 min  
 Delta R.T.: -0.026 min  
 Response: 446983  
 Conc: 11.09 ng/ml