

Data Path : Z:\pestpcbsrv\HPCHEM1\ECD\_O\Data\P0082824\  
 Data File : P0105986.D  
 Signal(s) : Signal #1: ECD1A.ch Signal #2: ECD2B.ch  
 Acq On : 28 Aug 2024 18:19  
 Operator : YP/AJ  
 Sample : P3751-01  
 Misc :  
 ALS Vial : 28 Sample Multiplier: 1

**Instrument :**  
 ECD\_O  
**ClientSampleId :**  
 WC-CMC-ESLAG-1

**Manual Integrations**  
**APPROVED**

Reviewed By :Yogesh Patel 08/29/2024  
 Supervised By :Ankita Jodhani 08/29/2024

Integration File signal 1: autoint1.e  
 Integration File signal 2: autoint2.e  
 Quant Time: Aug 29 01:46:01 2024  
 Quant Method : Z:\pestpcbsrv\HPCHEM1\ECD\_O\methods\P0082624.M  
 Quant Title : GC EXTRACTABLES  
 QLast Update : Tue Aug 27 06:50:58 2024  
 Response via : Initial Calibration  
 Integrator: ChemStation

Volume Inj. : 2 µl  
 Signal #1 Phase : ZB-MR1 Signal #2 Phase: ZB-MR2  
 Signal #1 Info : 30Mx0.32mmx 0.50µ Signal #2 Info : 30M x 0.32mm x 0.25µm

Compound	RT#1	RT#2	Resp#1	Resp#2	ng/ml	ng/ml
-----						
System Monitoring Compounds						
1) SA Tetrachlo...	4.454	3.720	178.3E6	55119425	19.544m	20.401
2) SA Decachlor...	10.197	8.753	106.2E6	50094964	19.565	22.947
Target Compounds						
26) L6 AR-1254-1	6.472	5.618	51879194	21625071	168.053	160.277
27) L6 AR-1254-2	6.692	5.765	56094544	10781934	121.753	88.835 #
28) L6 AR-1254-3	7.056	6.170	84850785	34649743	179.611	179.757
29) L6 AR-1254-4	7.340	6.397	25620086	6540373	73.547	53.931 #
30) L6 AR-1254-5	7.759	6.815	79244571	27637812	217.017	156.315 #
-----						

(f)=RT Delta > 1/2 Window (#)=Amounts differ by > 25% (m)=manual int.

Data Path : Z:\pestpcbsrv\HPCHEM1\ECD\_O\Data\PO082824\  
 Data File : PO105986.D  
 Signal(s) : Signal #1: ECD1A.ch Signal #2: ECD2B.ch  
 Acq On : 28 Aug 2024 18:19  
 Operator : YP/AJ  
 Sample : P3751-01  
 Misc :  
 ALS Vial : 28 Sample Multiplier: 1

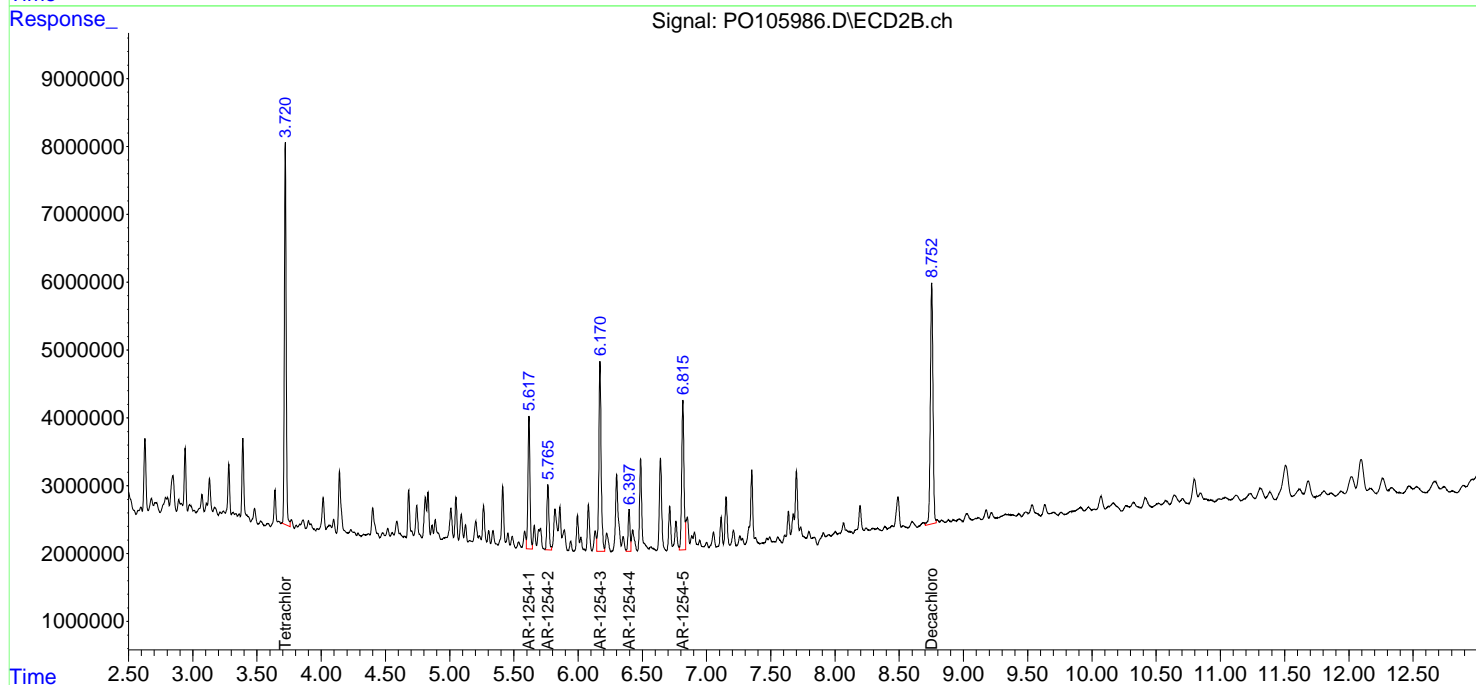
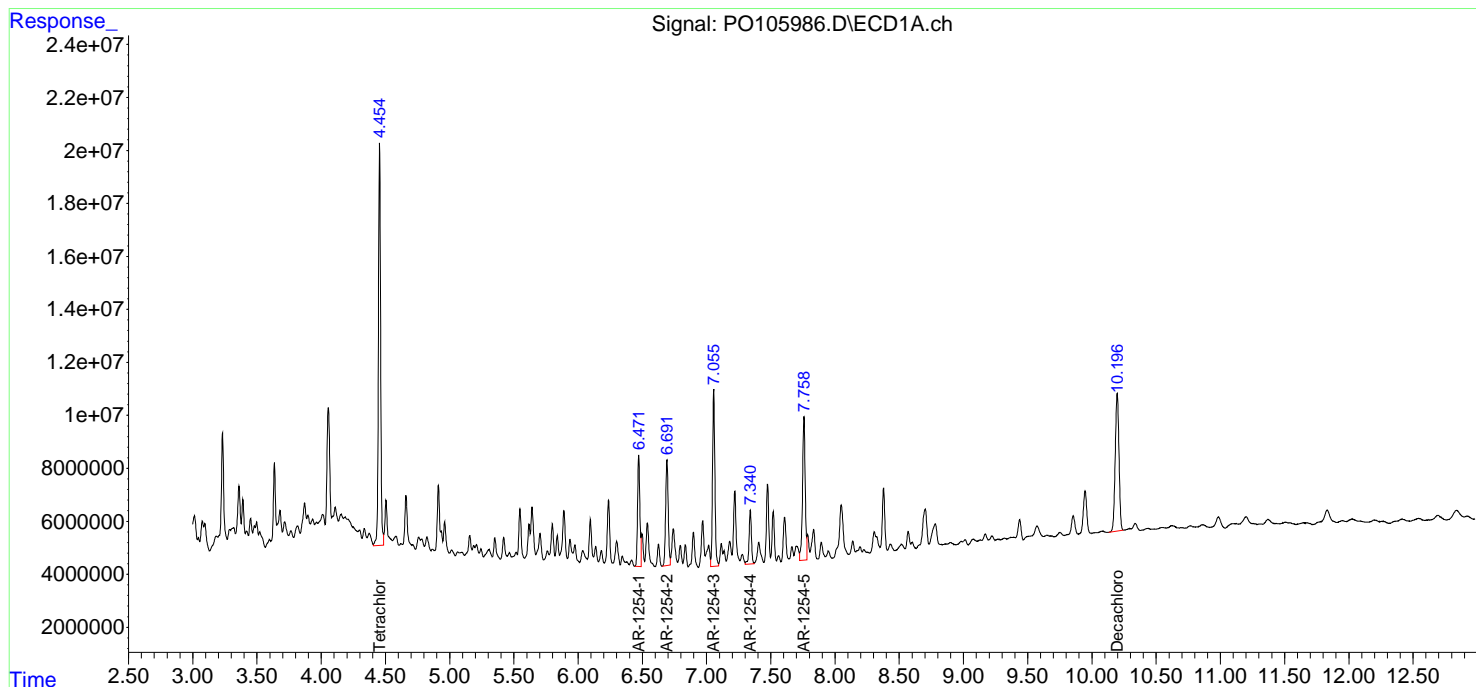
Instrument :  
 ECD\_O  
 ClientSampleId :  
 WC-CMC-ESLAG-1

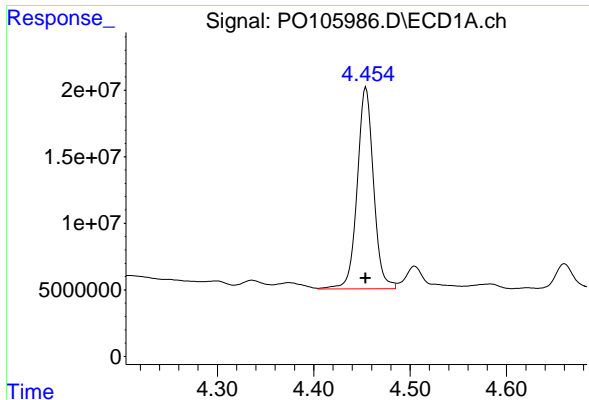
Manual Integrations  
**APPROVED**

Reviewed By :Yogesh Patel 08/29/2024  
 Supervised By :Ankita Jodhani 08/29/2024

Integration File signal 1: autoint1.e  
 Integration File signal 2: autoint2.e  
 Quant Time: Aug 29 01:46:01 2024  
 Quant Method : Z:\pestpcbsrv\HPCHEM1\ECD\_O\methods\PO082624.M  
 Quant Title : GC EXTRACTABLES  
 QLast Update : Tue Aug 27 06:50:58 2024  
 Response via : Initial Calibration  
 Integrator: ChemStation

Volume Inj. : 2 µl  
 Signal #1 Phase : ZB-MR1 Signal #2 Phase: ZB-MR2  
 Signal #1 Info : 30Mx0.32mmx 0.50µm Signal #2 Info : 30M x 0.32mm x 0.25µm





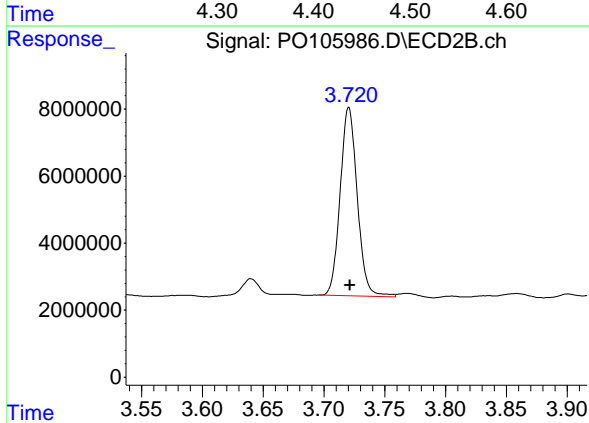
#1 Tetrachloro-m-xylene

R.T.: 4.454 min  
 Delta R.T.: 0.000 min  
 Response: 178307094  
 Conc: 19.54 ng/ml

Instrument :  
 ECD\_O  
 ClientSampleId :  
 WC-CMC-ESLAG-1

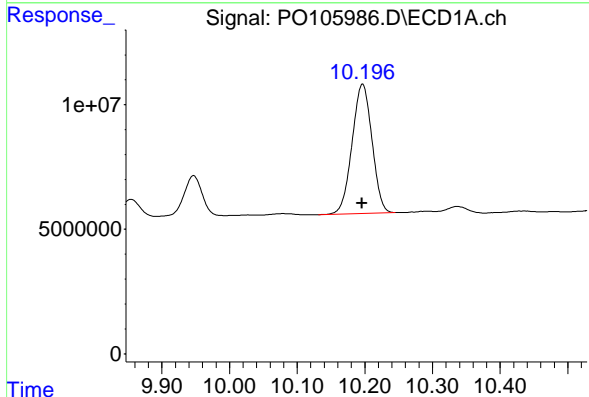
Manual Integrations  
 APPROVED

Reviewed By :Yogesh Patel 08/29/2024  
 Supervised By :Ankita Jodhani 08/29/2024



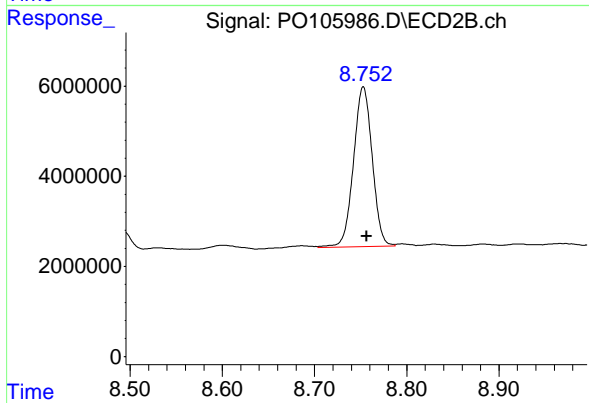
#1 Tetrachloro-m-xylene

R.T.: 3.720 min  
 Delta R.T.: -0.001 min  
 Response: 55119425  
 Conc: 20.40 ng/ml



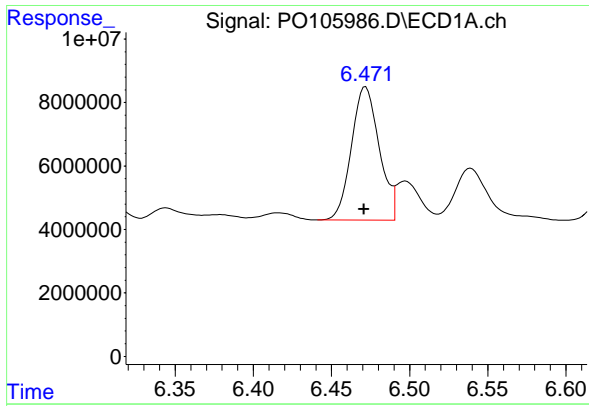
#2 Decachlorobiphenyl

R.T.: 10.197 min  
 Delta R.T.: 0.001 min  
 Response: 106176924  
 Conc: 19.56 ng/ml



#2 Decachlorobiphenyl

R.T.: 8.753 min  
 Delta R.T.: -0.004 min  
 Response: 50094964  
 Conc: 22.95 ng/ml



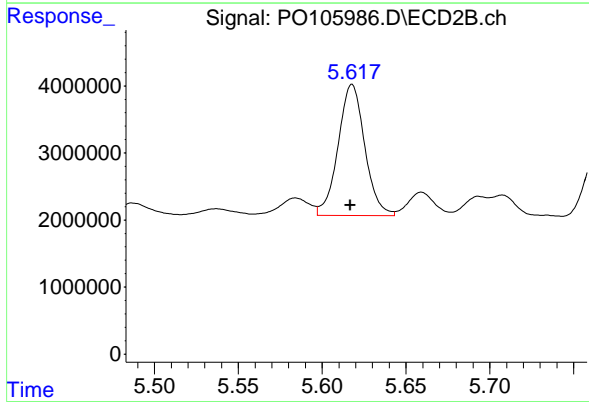
#26 AR-1254-1

R.T.: 6.472 min  
 Delta R.T.: 0.001 min  
 Response: 51879194  
 Conc: 168.05 ng/ml

Instrument :  
 ECD\_O  
 ClientSampleId :  
 WC-CMC-ESLAG-1

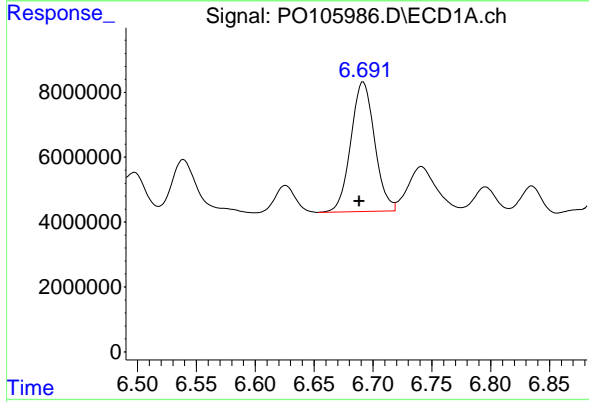
Manual Integrations  
 APPROVED

Reviewed By :Yogesh Patel 08/29/2024  
 Supervised By :Ankita Jodhani 08/29/2024



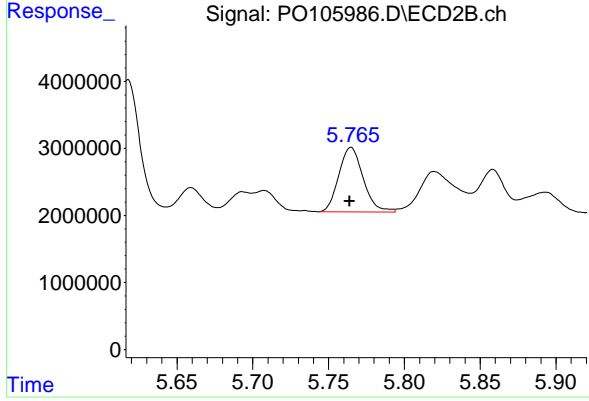
#26 AR-1254-1

R.T.: 5.618 min  
 Delta R.T.: 0.001 min  
 Response: 21625071  
 Conc: 160.28 ng/ml



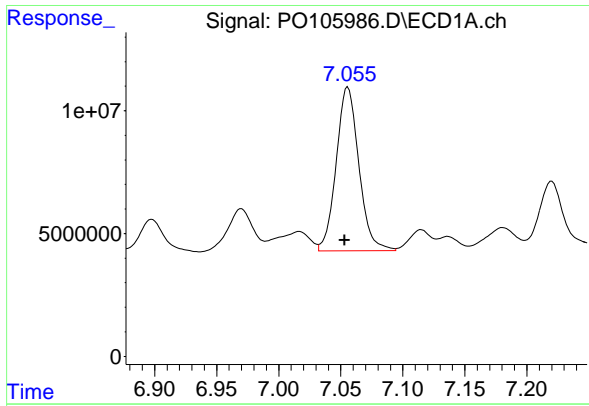
#27 AR-1254-2

R.T.: 6.692 min  
 Delta R.T.: 0.003 min  
 Response: 56094544  
 Conc: 121.75 ng/ml



#27 AR-1254-2

R.T.: 5.765 min  
 Delta R.T.: 0.000 min  
 Response: 10781934  
 Conc: 88.83 ng/ml



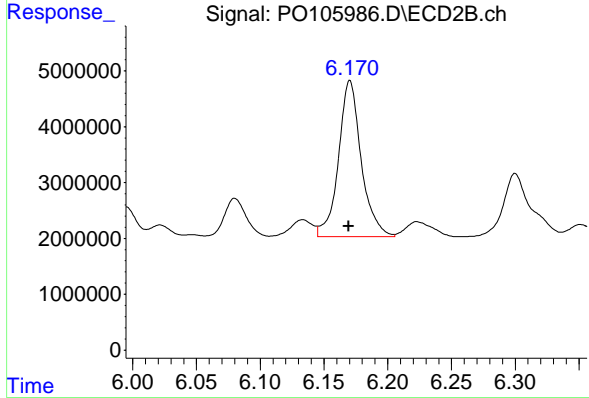
#28 AR-1254-3

R.T.: 7.056 min  
 Delta R.T.: 0.003 min  
 Response: 84850785  
 Conc: 179.61 ng/ml

Instrument :  
 ECD\_O  
 ClientSampleId :  
 WC-CMC-ESLAG-1

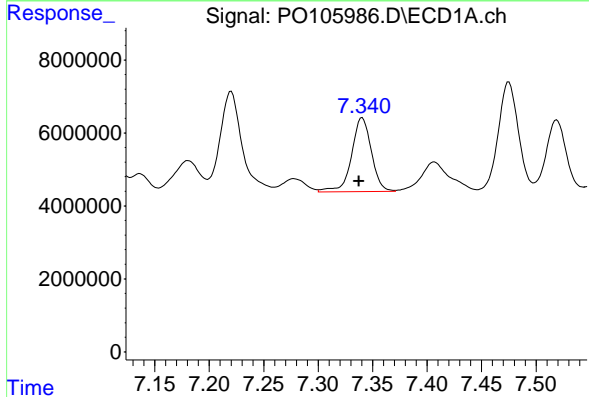
Manual Integrations  
 APPROVED

Reviewed By :Yogesh Patel 08/29/2024  
 Supervised By :Ankita Jodhani 08/29/2024



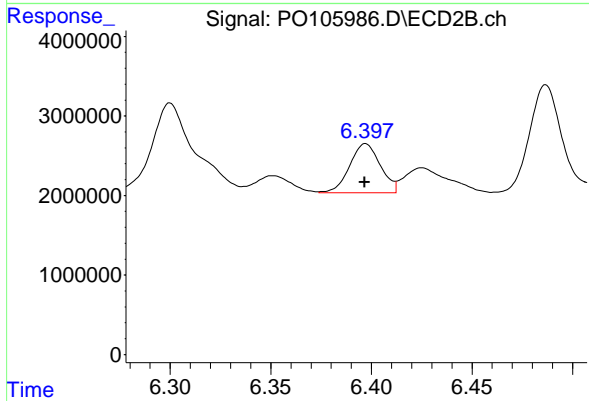
#28 AR-1254-3

R.T.: 6.170 min  
 Delta R.T.: 0.000 min  
 Response: 34649743  
 Conc: 179.76 ng/ml



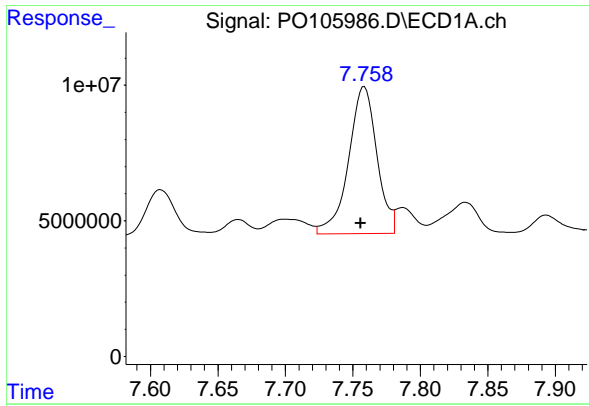
#29 AR-1254-4

R.T.: 7.340 min  
 Delta R.T.: 0.003 min  
 Response: 25620086  
 Conc: 73.55 ng/ml



#29 AR-1254-4

R.T.: 6.397 min  
 Delta R.T.: 0.000 min  
 Response: 6540373  
 Conc: 53.93 ng/ml



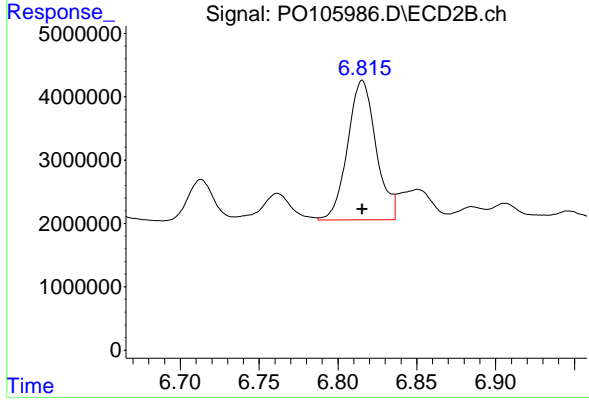
#30 AR-1254-5

R.T.: 7.759 min  
 Delta R.T.: 0.003 min  
 Response: 79244571  
 Conc: 217.02 ng/ml

Instrument :  
 ECD\_O  
 ClientSampleId :  
 WC-CMC-ESLAG-1

Manual Integrations  
 APPROVED

Reviewed By :Yogesh Patel 08/29/2024  
 Supervised By :Ankita Jodhani 08/29/2024



#30 AR-1254-5

R.T.: 6.815 min  
 Delta R.T.: 0.000 min  
 Response: 27637812  
 Conc: 156.32 ng/ml