

Data Path : Z:\pestpcbsrv\HPCHEM1\ECD\_O\Data\P0082919\  
 Data File : P0060029.D  
 Signal(s) : Signal #1: ECD1A.CH Signal #2: ECD2B.CH  
 Acq On : 29 Aug 2019 18:46  
 Operator : SM/AJ  
 Sample : K4592-01  
 Misc :  
 ALS Vial : 29 Sample Multiplier: 1

Instrument :  
 ECD\_O  
 ClientSampleId :  
 GW-3

Integration File signal 1: autoint1.e  
 Integration File signal 2: autoint2.e  
 Quant Time: Aug 30 02:09:40 2019  
 Quant Method : Z:\pestpcbsrv\HPCHEM1\ECD\_O\methods\P0081719.M  
 Quant Title : GC EXTRACTABLES  
 QLast Update : Wed Aug 28 13:30:59 2019  
 Response via : Initial Calibration  
 Integrator: ChemStation 6890 Scale Mode: Small noise peaks clipped

Volume Inj. : 2 µl  
 Signal #1 Phase : ZB-MR1 Signal #2 Phase: ZB-MR2  
 Signal #1 Info : 30Mx0.32mmx 0.50µ Signal #2 Info : 30M x 0.32mm x 0.25µm

Compound	RT#1	RT#2	Resp#1	Resp#2	ng/ml	ng/ml
----------	------	------	--------	--------	-------	-------

-----  
 System Monitoring Compounds

1) SA Tetrachlo...	4.126	3.499	633478	580322	18.093	16.122
2) SA Decachlor...	9.590	8.357	567314	423766	10.664	10.510

Target Compounds  
 -----

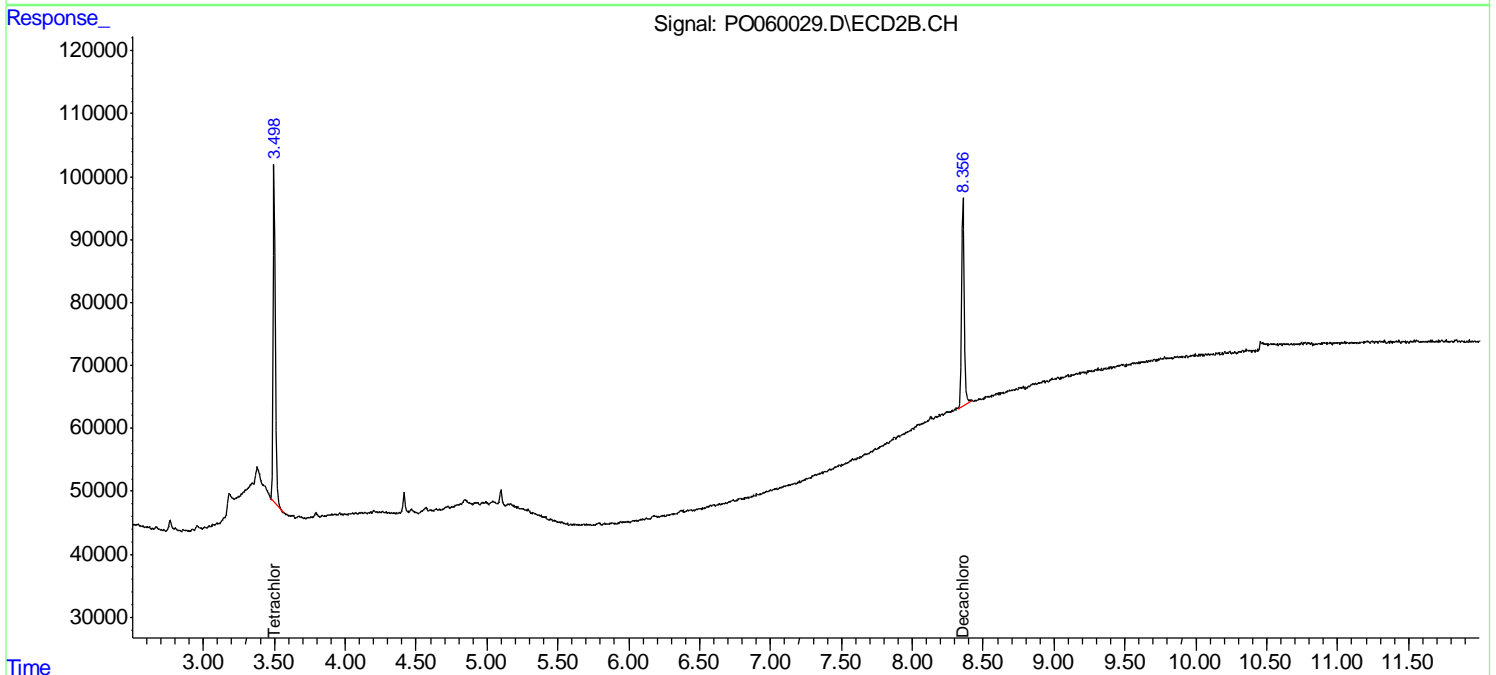
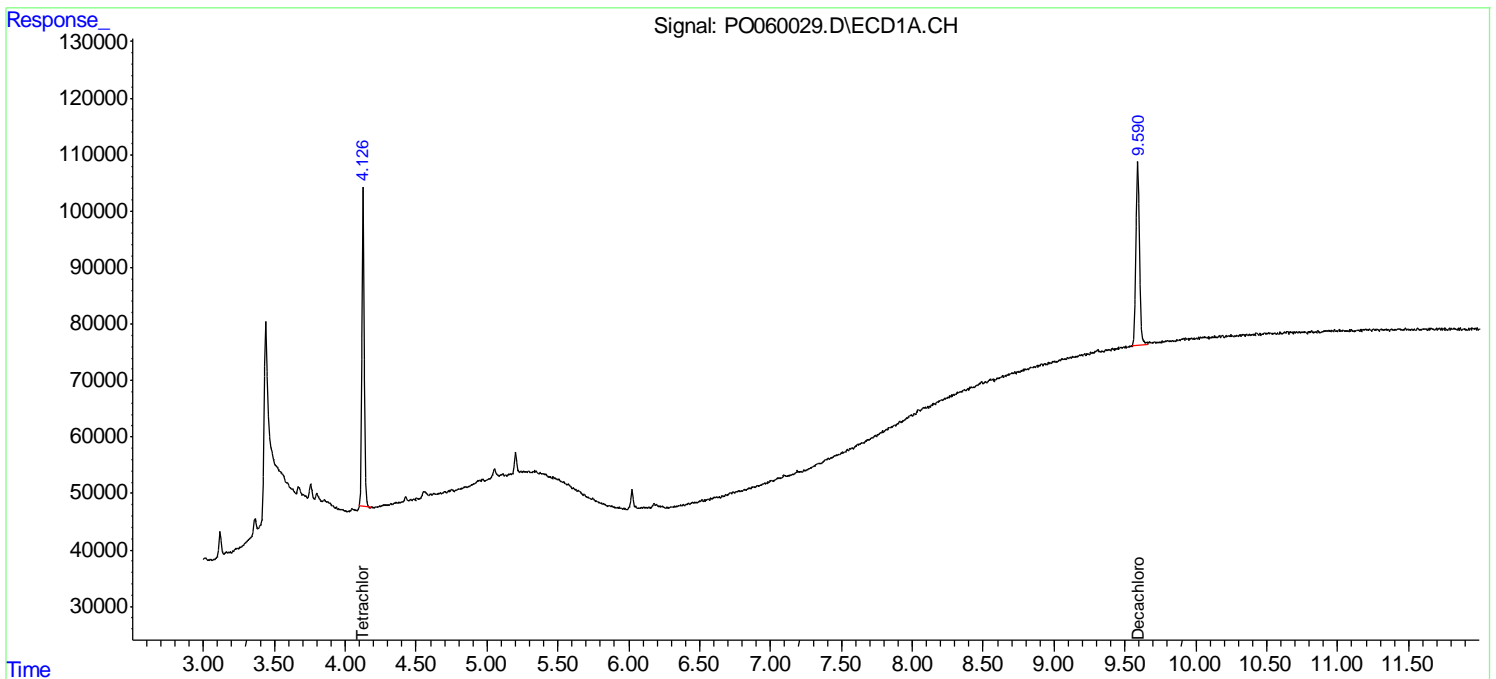
(f)=RT Delta > 1/2 Window (#)=Amounts differ by > 25% (m)=manual int.

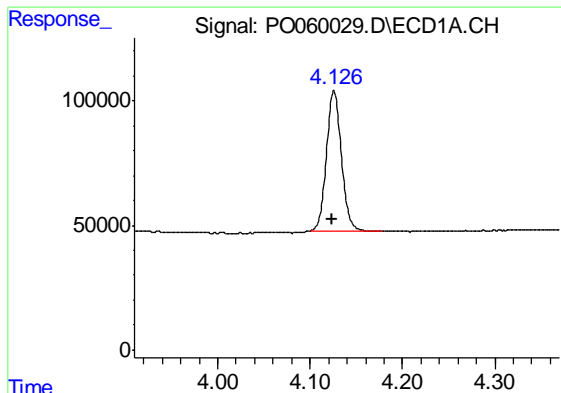
Data Path : Z:\pestpcbsrv\HPCHEM1\ECD\_O\Data\PO082919\  
 Data File : PO060029.D  
 Signal(s) : Signal #1: ECD1A.CH Signal #2: ECD2B.CH  
 Acq On : 29 Aug 2019 18:46  
 Operator : SM/AJ  
 Sample : K4592-01  
 Misc :  
 ALS Vial : 29 Sample Multiplier: 1

Instrument :  
 ECD\_O  
 ClientSampled :  
 GW-3

Integration File signal 1: autoint1.e  
 Integration File signal 2: autoint2.e  
 Quant Time: Aug 30 02:09:40 2019  
 Quant Method : Z:\pestpcbsrv\HPCHEM1\ECD\_O\methods\PO081719.M  
 Quant Title : GC EXTRACTABLES  
 QLast Update : Wed Aug 28 13:30:59 2019  
 Response via : Initial Calibration  
 Integrator: ChemStation 6890 Scale Mode: Small noise peaks clipped

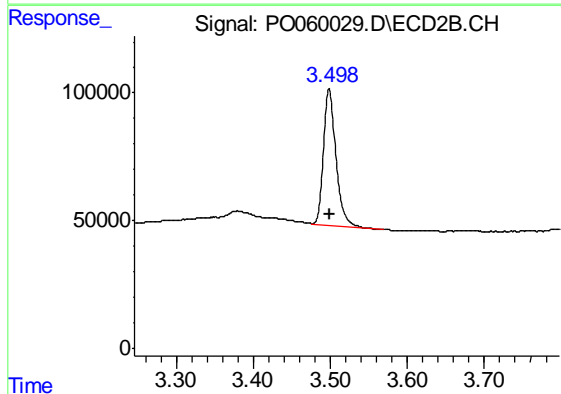
Volume Inj. : 2 µl  
 Signal #1 Phase : ZB-MR1 Signal #2 Phase: ZB-MR2  
 Signal #1 Info : 30Mx0.32mmx 0.50µ Signal #2 Info : 30M x 0.32mm x 0.25µm



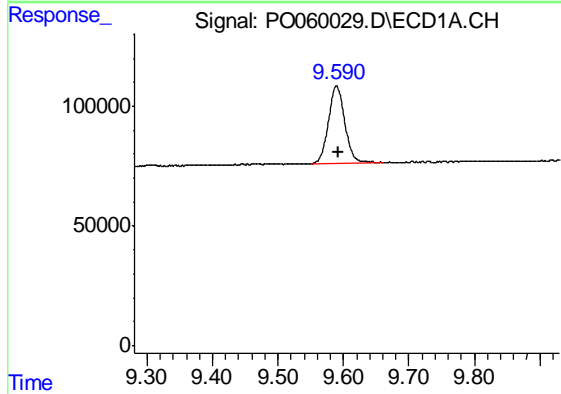


#1 Tetrachloro-m-xylene  
 R.T.: 4.126 min  
 Delta R.T.: 0.002 min  
 Response: 633478  
 Conc: 18.09 ng/ml

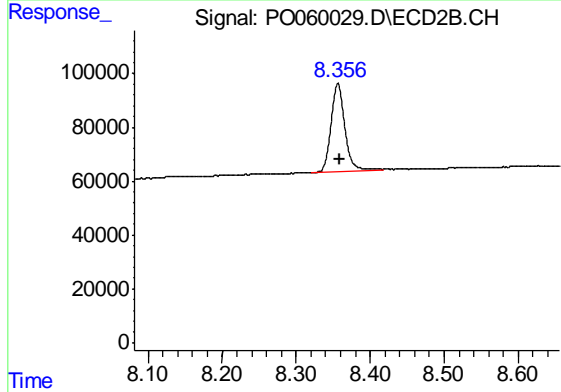
Instrument :  
 ECD\_O  
 ClientSampleId :  
 GW-3



#1 Tetrachloro-m-xylene  
 R.T.: 3.499 min  
 Delta R.T.: 0.000 min  
 Response: 580322  
 Conc: 16.12 ng/ml



#2 Decachlorobiphenyl  
 R.T.: 9.590 min  
 Delta R.T.: -0.004 min  
 Response: 567314  
 Conc: 10.66 ng/ml



#2 Decachlorobiphenyl  
 R.T.: 8.357 min  
 Delta R.T.: -0.003 min  
 Response: 423766  
 Conc: 10.51 ng/ml