

Data Path : Z:\pestpcbsrv\HPCHEM1\ECD_0\Data\P0082922\
 Data File : P0089116.D
 Signal(s) : Signal #1: ECD1A.ch Signal #2: ECD2B.ch
 Acq On : 29 Aug 2022 18:12
 Operator : YP/AJ
 Sample : AR1248ICV500
 Misc :
 ALS Vial : 33 Sample Multiplier: 1

Instrument :
 ECD_0
 ClientSampleId :

Integration File signal 1: autoint1.e
 Integration File signal 2: autoint2.e
 Quant Time: Aug 29 18:27:50 2022
 Quant Method : Z:\pestpcbsrv\HPCHEM1\ECD_0\methods\P0082922.M
 Quant Title : GC EXTRACTABLES
 QLast Update : Mon Aug 29 17:48:02 2022
 Response via : Initial Calibration
 Integrator: ChemStation

Volume Inj. : 2 µl
 Signal #1 Phase : ZB-MR1 Signal #2 Phase: ZB-MR2
 Signal #1 Info : 30Mx0.32mmx 0.50µ Signal #2 Info : 30M x 0.32mm x 0.25µm

Compound	RT#1	RT#2	Resp#1	Resp#2	ng/ml	ng/ml
System Monitoring Compounds						
1) SA Tetrachlo...	4.432	3.589	170.9E6	53668270	45.584	55.600
2) SA Decachlor...	10.259	8.572	105.0E6	47435250	45.626	53.642
Target Compounds						
3) L1 AR-1016-1	5.607	4.665	32701309	11934868	290.844	330.485
4) L1 AR-1016-2	5.630	4.683	38210869	11974898	242.457	242.557
5) L1 AR-1016-3	5.692	4.859	18807226	8022762	192.839	301.640 #
6) L1 AR-1016-4	5.790	4.900	20807686	16799905	264.438	780.546 #
7) L1 AR-1016-5	6.088	5.112	49190582	20783691	640.973	712.312
8) L2 AR-1221-1	4.637	3.799	563826	177258	13.260	15.491
9) L2 AR-1221-2	4.739	3.886	2635412	879141	84.339	100.509
10) L2 AR-1221-3	4.804	3.960	2764869	927141	29.782	33.308
11) L3 AR-1232-1	4.804	3.960	2764869	927141	37.588	40.366
12) L3 AR-1232-2	5.142	4.683	19325947	11974898	515.355	566.134
13) L3 AR-1232-3	5.630	4.859	38210869	8022762	572.414	719.729 #
14) L3 AR-1232-4	5.790	4.941	20807686	17643357	632.868	1728.149 #
15) L3 AR-1232-5	5.882	5.112	46101797	20783691	1705.911	1780.740
16) L4 AR-1242-1	5.607	4.665	32701309	11934868	369.963	409.704
17) L4 AR-1242-2	5.630	4.683	38210869	11974898	308.734	302.285
18) L4 AR-1242-3	5.692	4.859	18807226	8022762	244.680	376.526 #
19) L4 AR-1242-4	5.790	4.941	20807686	17643357	335.025	810.858 #
20) L4 AR-1242-5	6.532	5.463	52579391	30137268	816.801	1103.232 #
21) L5 AR-1248-1	5.607	4.665	32701309	11934868	474.871	531.399
22) L5 AR-1248-2	5.882	4.900	46101797	16799905	467.121	513.616
23) L5 AR-1248-3	6.088	4.941	49190582	17643357	469.527	517.553
24) L5 AR-1248-4	6.493	5.112	54069526	20783691	469.949	509.902
25) L5 AR-1248-5	6.532	5.504	52579391	21261016	464.546	535.020
26) L6 AR-1254-1	6.466	5.463	41877305	30137268	364.095	509.405 #
27) L6 AR-1254-2	6.689	5.611	52061457	8975620	305.946	175.954 #
28) L6 AR-1254-3	7.055	6.013	27868467	13749692	160.461	174.104
29) L6 AR-1254-4	7.341	6.242	19929953	9416115	159.662	189.957
30) L6 AR-1254-5	7.762	6.659	4350537	2404976	33.777	35.571
31) L7 AR-1260-1	7.222	6.157	3021309	6496777	22.437	115.800 #
32) L7 AR-1260-2	7.477	6.331	5453648	1222427	35.735	17.990 #
33) L7 AR-1260-3	7.822	6.480	802639	2077132	7.183	33.855 #
34) L7 AR-1260-4	8.053	6.955	2066999	158138	16.744	3.138 #
35) L7 AR-1260-5	8.392	7.197	871787	337273	3.654	2.948
36) L8 AR-1262-1	7.822	6.728	802639	169956	5.319	6.003
37) L8 AR-1262-2	8.392	7.197	871787	337273	3.424	2.797
38) L8 AR-1262-3	8.729	7.479	447192	127717	2.616	2.652
39) L8 AR-1262-4	8.796	7.540	33950	364076	0.486	4.073 #
40) L8 AR-1262-5	9.549f	0.000	371527	0	3.917	N.D. #
41) L9 AR-1268-1	8.729	7.479	447192	127717	1.546	0.893 #

Data Path : Z:\pestpcbsrv\HPCHEM1\ECD_0\Data\P0082922\
 Data File : P0089116.D
 Signal(s) : Signal #1: ECD1A.ch Signal #2: ECD2B.ch
 Acq On : 29 Aug 2022 18:12
 Operator : YP/AJ
 Sample : AR1248ICV500
 Misc :
 ALS Vial : 33 Sample Multiplier: 1

Instrument :
 ECD_0
 ClientSampleId :

Integration File signal 1: autoint1.e
 Integration File signal 2: autoint2.e
 Quant Time: Aug 29 18:27:50 2022
 Quant Method : Z:\pestpcbsrv\HPCHEM1\ECD_0\methods\P0082922.M
 Quant Title : GC EXTRACTABLES
 QLast Update : Mon Aug 29 17:48:02 2022
 Response via : Initial Calibration
 Integrator: ChemStation

Volume Inj. : 2 µl
 Signal #1 Phase : ZB-MR1 Signal #2 Phase: ZB-MR2
 Signal #1 Info : 30Mx0.32mmx 0.50µ Signal #2 Info : 30M x 0.32mm x 0.25µm

	Compound	RT#1	RT#2	Resp#1	Resp#2	ng/ml	ng/ml
42)	L9 AR-1268-2	8.796	7.540	33950	364076	0.127	2.832 #
43)	L9 AR-1268-3	9.046	0.000	399520	0	1.723	N.D. #
44)	L9 AR-1268-4	9.549f	0.000	371527	0	3.761	N.D. #
45)	L9 AR-1268-5	9.904	8.326	704206	232416	0.967	0.712 #

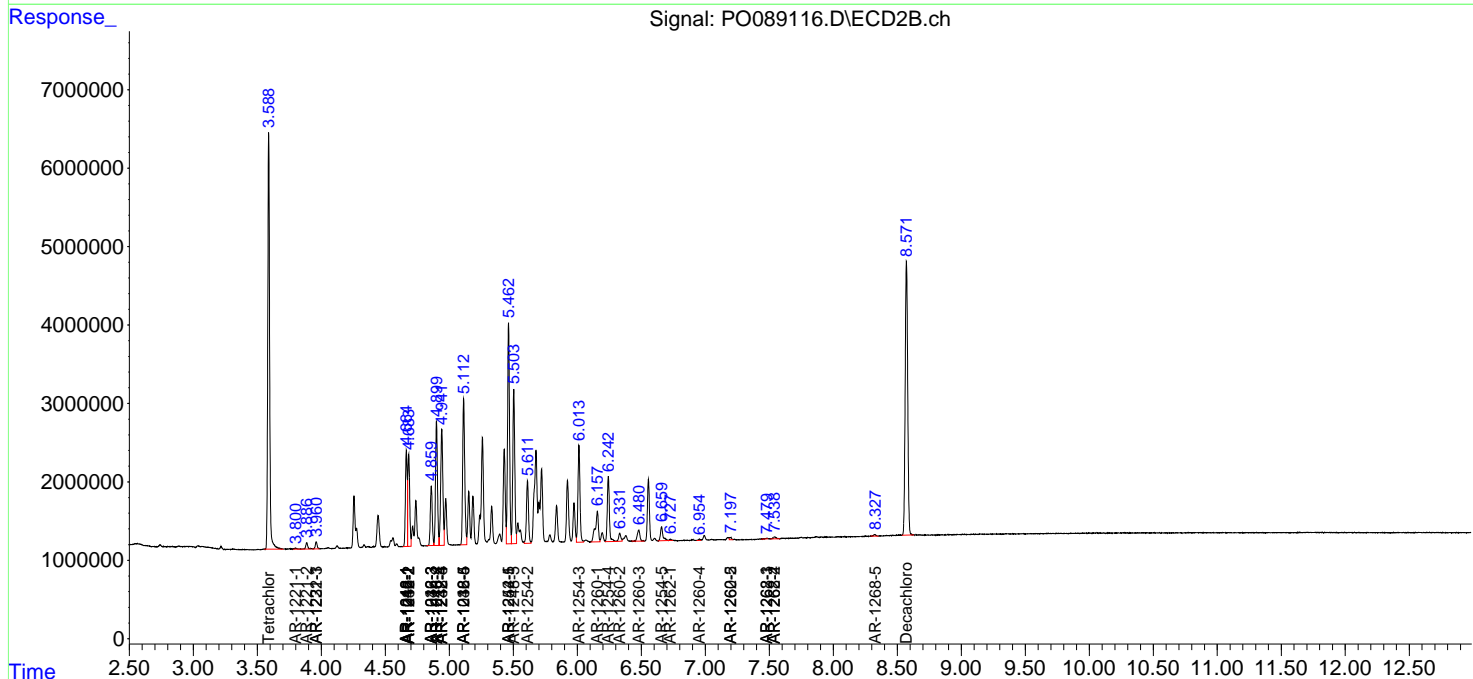
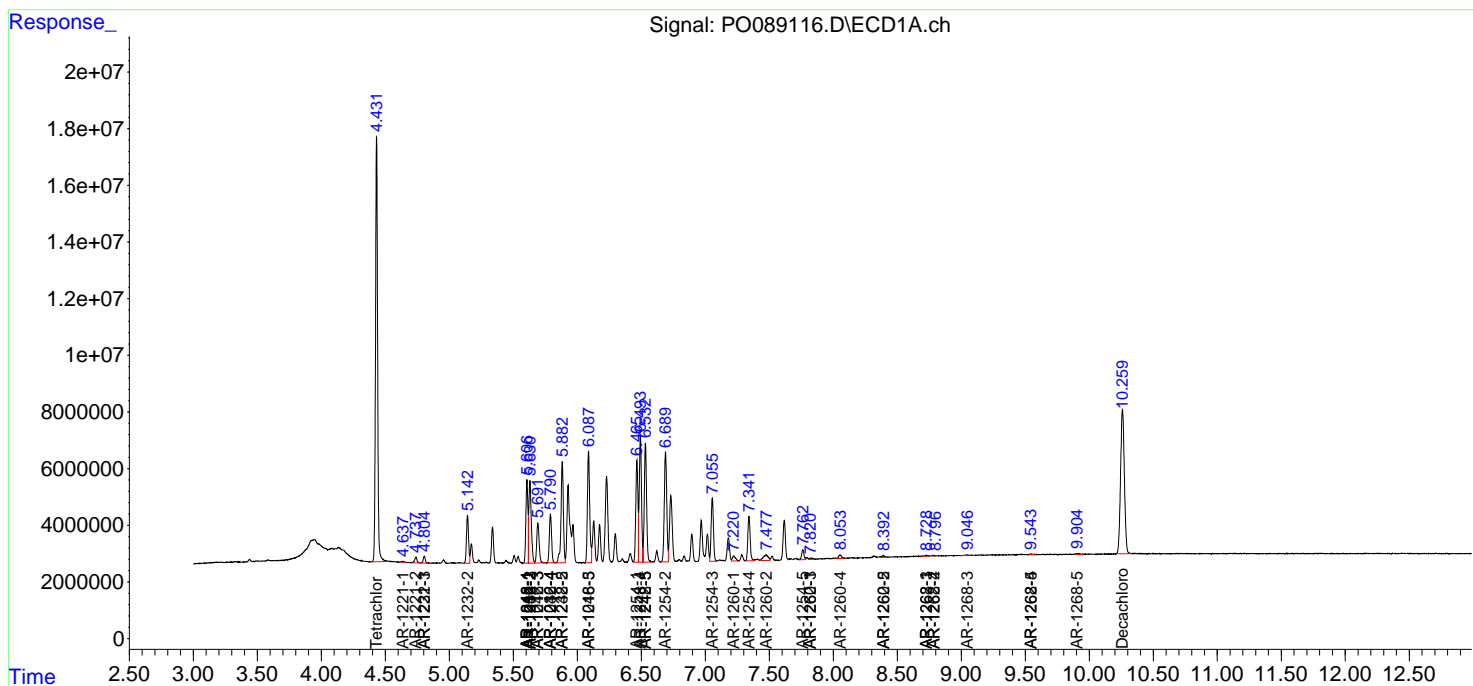
(f)=RT Delta > 1/2 Window (#)=Amounts differ by > 25% (m)=manual int.

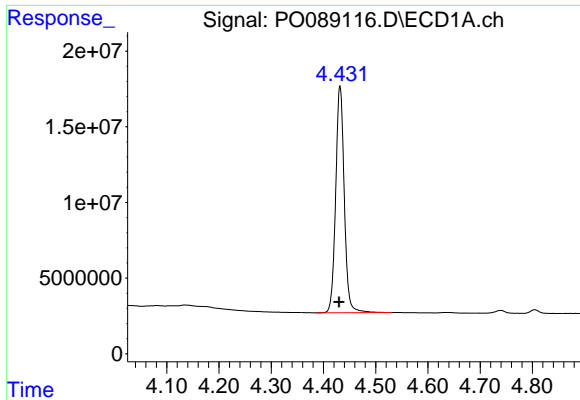
Data Path : Z:\pestpcbsrv\HPCHEM1\ECD_O\Data\PO082922\
 Data File : PO089116.D
 Signal(s) : Signal #1: ECD1A.ch Signal #2: ECD2B.ch
 Acq On : 29 Aug 2022 18:12
 Operator : YP/AJ
 Sample : AR1248ICV500
 Misc :
 ALS Vial : 33 Sample Multiplier: 1

Instrument :
 ECD_O
 ClientSampleId :

Integration File signal 1: autoint1.e
 Integration File signal 2: autoint2.e
 Quant Time: Aug 29 18:27:50 2022
 Quant Method : Z:\pestpcbsrv\HPCHEM1\ECD_O\methods\PO082922.M
 Quant Title : GC EXTRACTABLES
 QLast Update : Mon Aug 29 17:48:02 2022
 Response via : Initial Calibration
 Integrator: ChemStation

Volume Inj. : 2 µl
 Signal #1 Phase : ZB-MR1 Signal #2 Phase: ZB-MR2
 Signal #1 Info : 30Mx0.32mmx 0.50µ Signal #2 Info : 30M x 0.32mm x 0.25µm

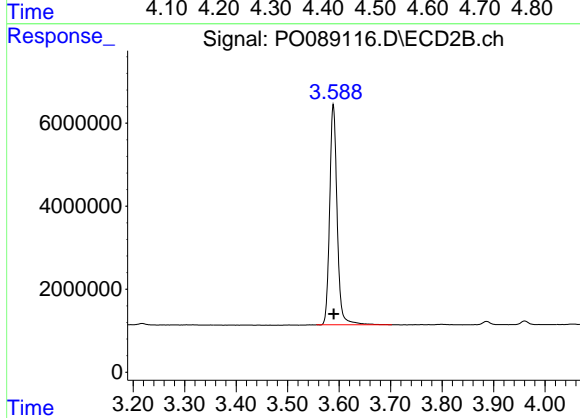




#1 Tetrachloro-m-xylene

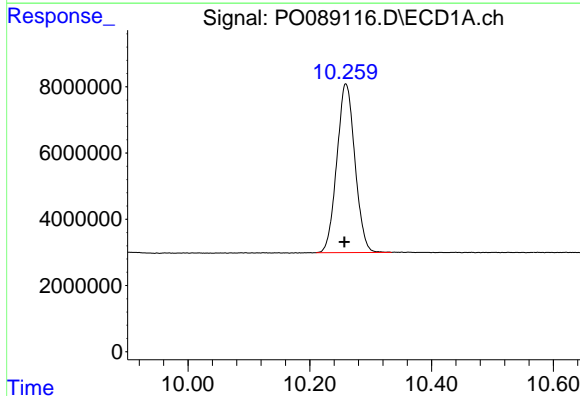
R.T.: 4.432 min
 Delta R.T.: 0.002 min
 Response: 170925182
 Conc: 45.58 ng/ml

Instrument :
 ECD_O
 ClientSampleId :



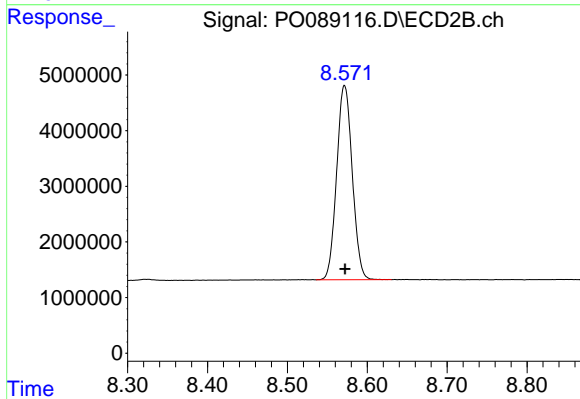
#1 Tetrachloro-m-xylene

R.T.: 3.589 min
 Delta R.T.: 0.000 min
 Response: 53668270
 Conc: 55.60 ng/ml



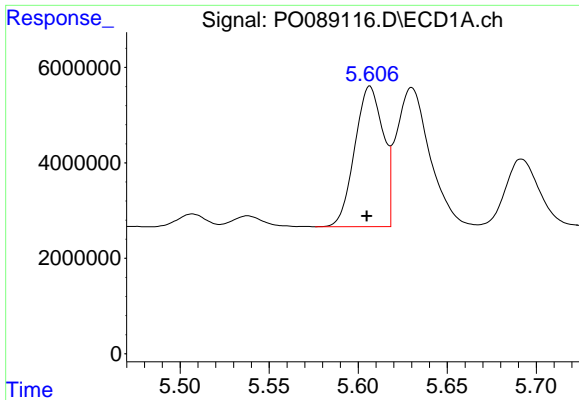
#2 Decachlorobiphenyl

R.T.: 10.259 min
 Delta R.T.: 0.002 min
 Response: 105045395
 Conc: 45.63 ng/ml



#2 Decachlorobiphenyl

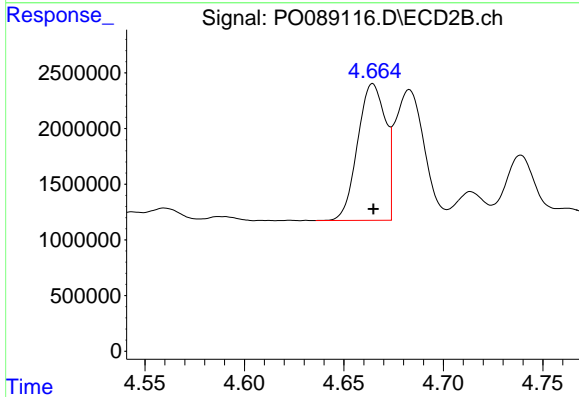
R.T.: 8.572 min
 Delta R.T.: 0.000 min
 Response: 47435250
 Conc: 53.64 ng/ml



#3 AR-1016-1

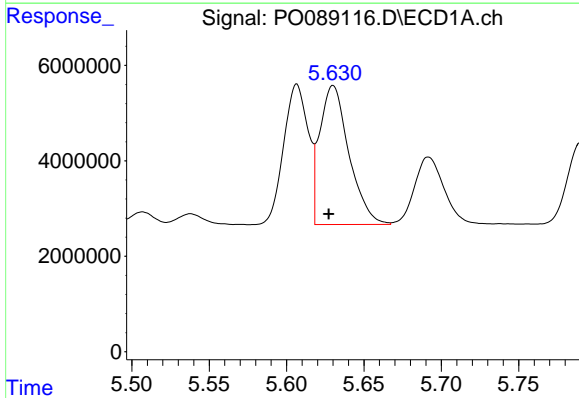
R.T.: 5.607 min
 Delta R.T.: 0.002 min
 Response: 32701309
 Conc: 290.84 ng/ml

Instrument :
 ECD_O
 ClientSampleId :



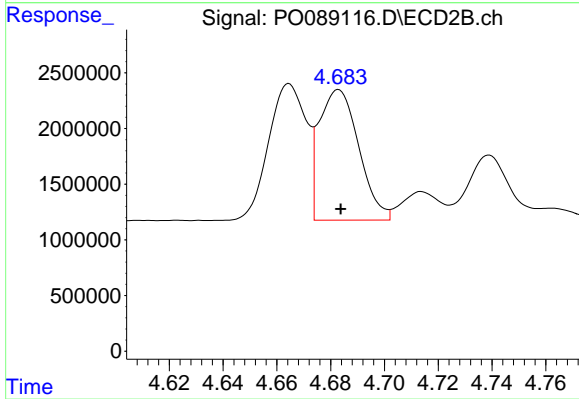
#3 AR-1016-1

R.T.: 4.665 min
 Delta R.T.: 0.000 min
 Response: 11934868
 Conc: 330.48 ng/ml



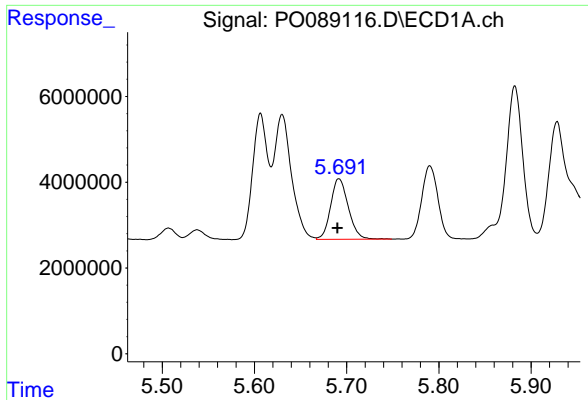
#4 AR-1016-2

R.T.: 5.630 min
 Delta R.T.: 0.003 min
 Response: 38210869
 Conc: 242.46 ng/ml



#4 AR-1016-2

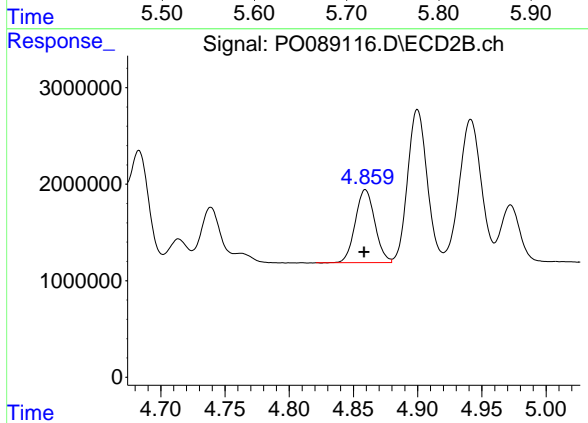
R.T.: 4.683 min
 Delta R.T.: 0.000 min
 Response: 11974898
 Conc: 242.56 ng/ml



#5 AR-1016-3

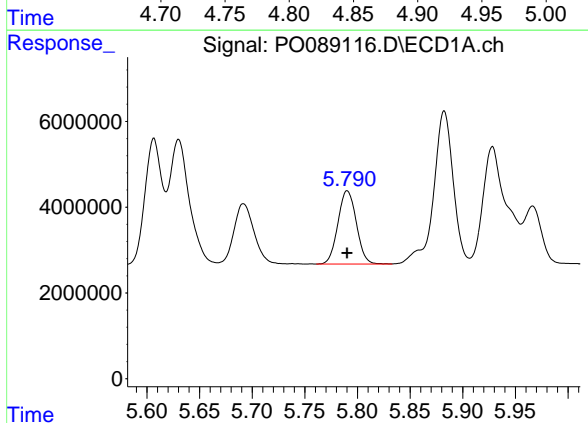
R.T.: 5.692 min
 Delta R.T.: 0.002 min
 Response: 18807226
 Conc: 192.84 ng/ml

Instrument :
 ECD_O
 ClientSampleId :



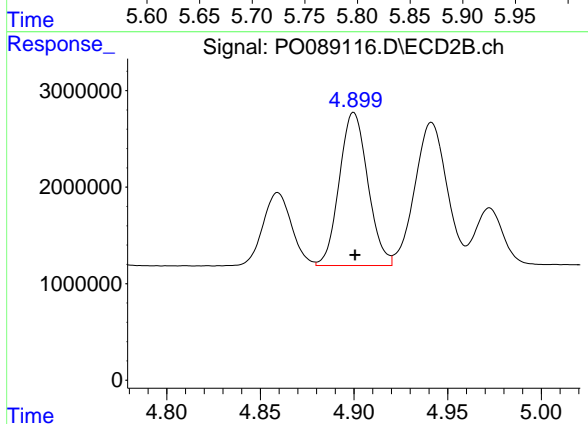
#5 AR-1016-3

R.T.: 4.859 min
 Delta R.T.: 0.001 min
 Response: 8022762
 Conc: 301.64 ng/ml



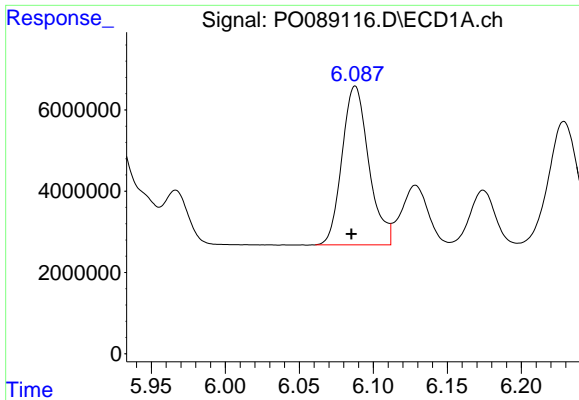
#6 AR-1016-4

R.T.: 5.790 min
 Delta R.T.: 0.000 min
 Response: 20807686
 Conc: 264.44 ng/ml



#6 AR-1016-4

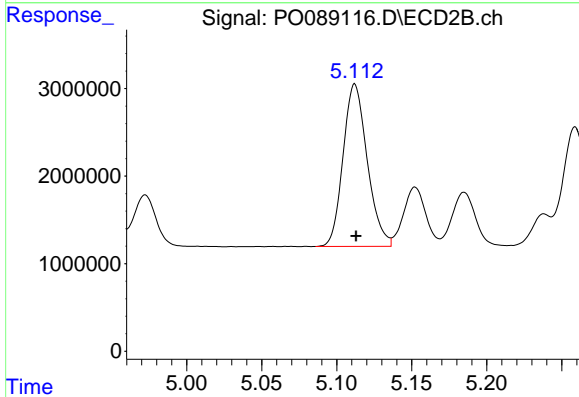
R.T.: 4.900 min
 Delta R.T.: 0.000 min
 Response: 16799905
 Conc: 780.55 ng/ml



#7 AR-1016-5

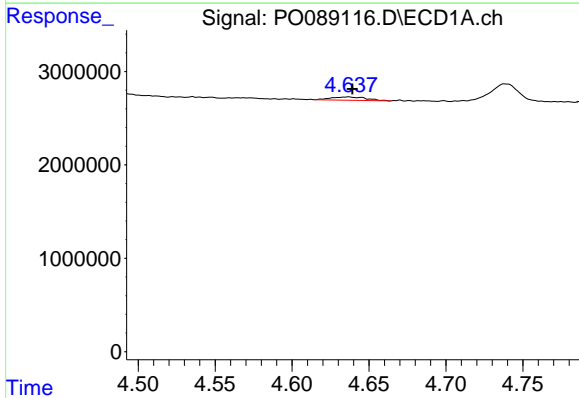
R.T.: 6.088 min
 Delta R.T.: 0.003 min
 Response: 49190582
 Conc: 640.97 ng/ml

Instrument :
 ECD_O
 ClientSampleId :



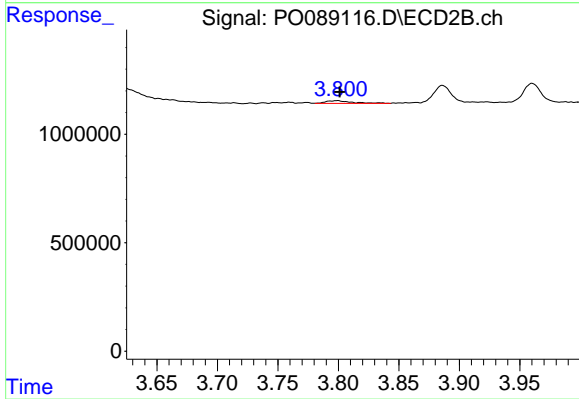
#7 AR-1016-5

R.T.: 5.112 min
 Delta R.T.: 0.000 min
 Response: 20783691
 Conc: 712.31 ng/ml



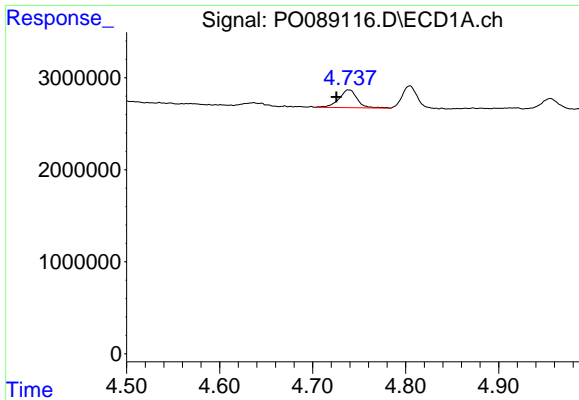
#8 AR-1221-1

R.T.: 4.637 min
 Delta R.T.: -0.002 min
 Response: 563826
 Conc: 13.26 ng/ml



#8 AR-1221-1

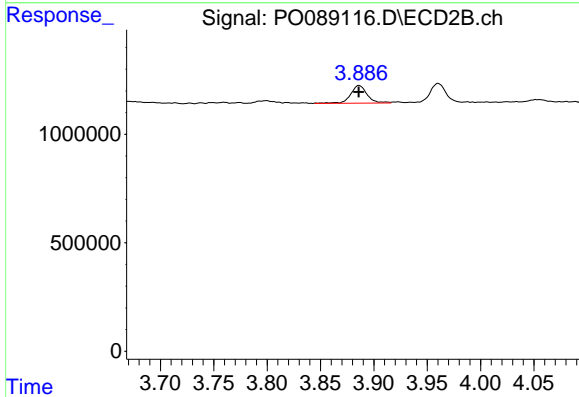
R.T.: 3.799 min
 Delta R.T.: -0.002 min
 Response: 177258
 Conc: 15.49 ng/ml



#9 AR-1221-2

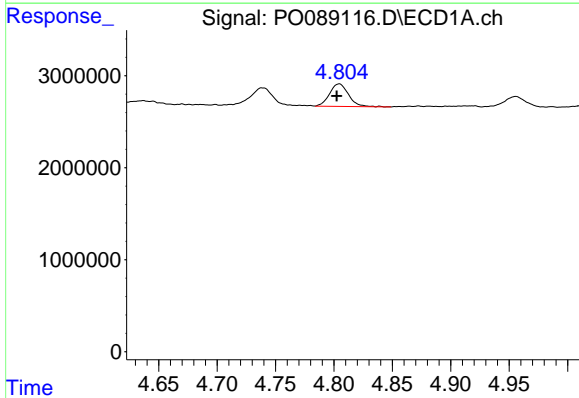
R.T.: 4.739 min
 Delta R.T.: 0.013 min
 Response: 2635412
 Conc: 84.34 ng/ml

Instrument :
 ECD_O
 ClientSampleId :



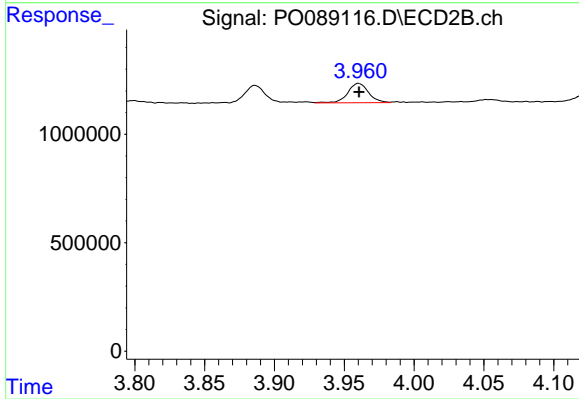
#9 AR-1221-2

R.T.: 3.886 min
 Delta R.T.: 0.000 min
 Response: 879141
 Conc: 100.51 ng/ml



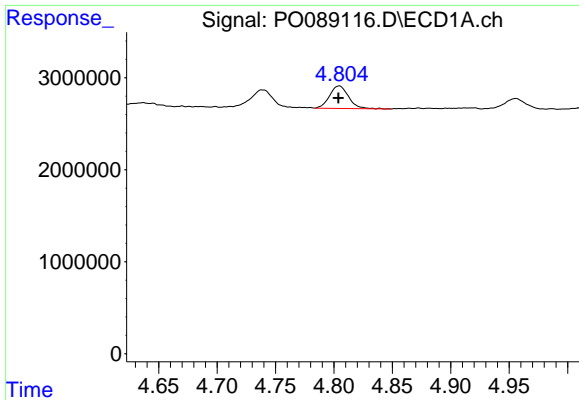
#10 AR-1221-3

R.T.: 4.804 min
 Delta R.T.: 0.002 min
 Response: 2764869
 Conc: 29.78 ng/ml



#10 AR-1221-3

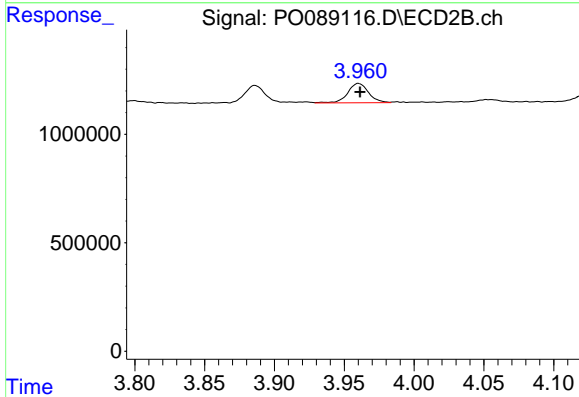
R.T.: 3.960 min
 Delta R.T.: 0.000 min
 Response: 927141
 Conc: 33.31 ng/ml



#11 AR-1232-1

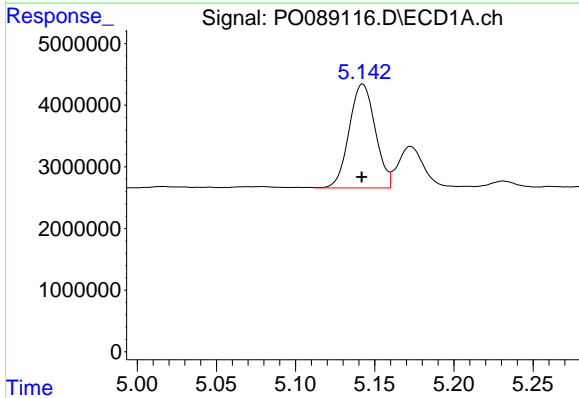
R.T.: 4.804 min
 Delta R.T.: 0.000 min
 Response: 2764869
 Conc: 37.59 ng/ml

Instrument :
 ECD_O
 ClientSampleId :



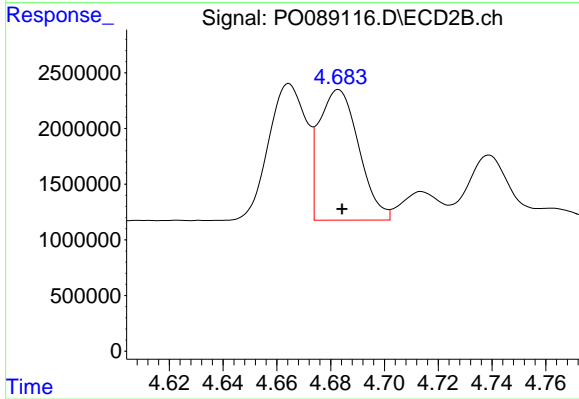
#11 AR-1232-1

R.T.: 3.960 min
 Delta R.T.: 0.000 min
 Response: 927141
 Conc: 40.37 ng/ml



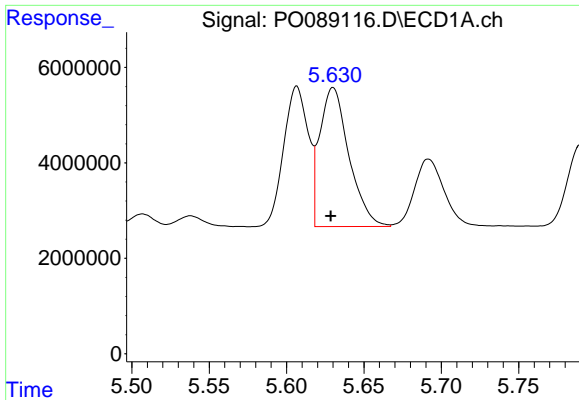
#12 AR-1232-2

R.T.: 5.142 min
 Delta R.T.: 0.000 min
 Response: 19325947
 Conc: 515.36 ng/ml



#12 AR-1232-2

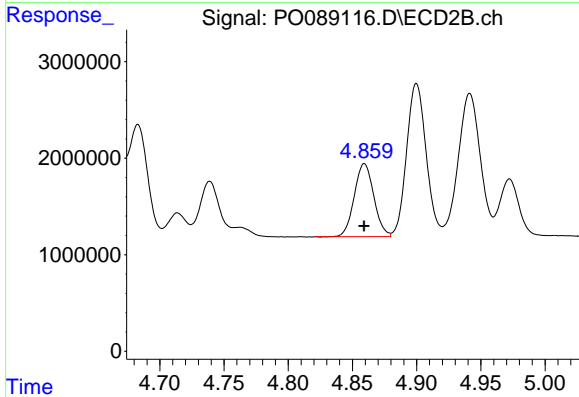
R.T.: 4.683 min
 Delta R.T.: -0.001 min
 Response: 11974898
 Conc: 566.13 ng/ml



#13 AR-1232-3

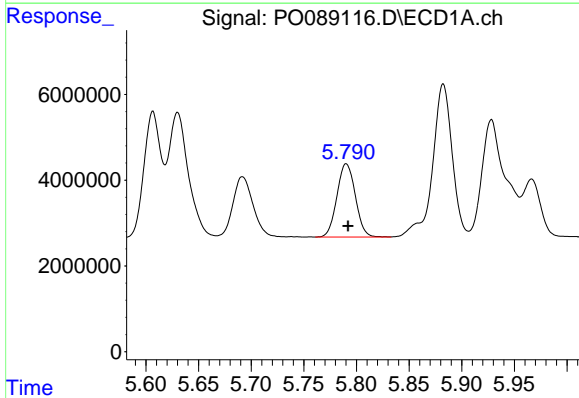
R.T.: 5.630 min
 Delta R.T.: 0.002 min
 Response: 38210869
 Conc: 572.41 ng/ml

Instrument :
 ECD_O
 ClientSampleId :



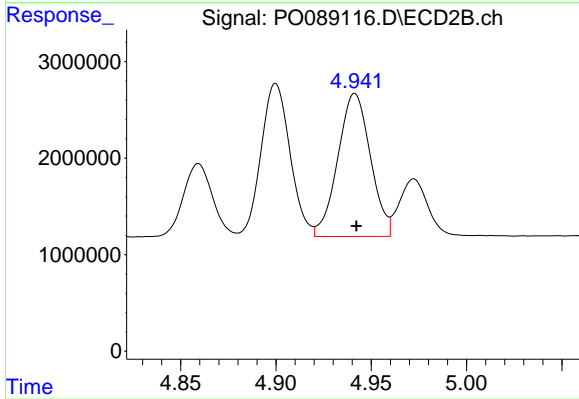
#13 AR-1232-3

R.T.: 4.859 min
 Delta R.T.: 0.000 min
 Response: 8022762
 Conc: 719.73 ng/ml



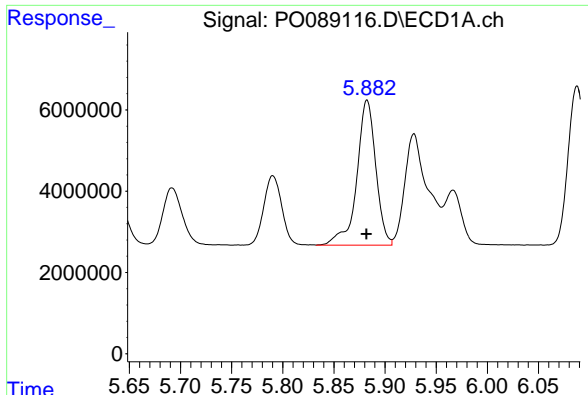
#14 AR-1232-4

R.T.: 5.790 min
 Delta R.T.: -0.002 min
 Response: 20807686
 Conc: 632.87 ng/ml



#14 AR-1232-4

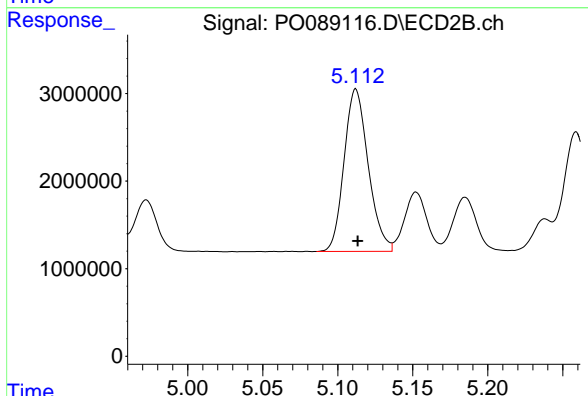
R.T.: 4.941 min
 Delta R.T.: 0.000 min
 Response: 17643357
 Conc: 1728.15 ng/ml



#15 AR-1232-5

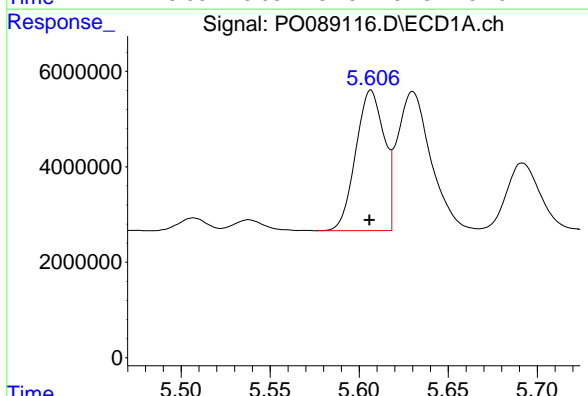
R.T.: 5.882 min
 Delta R.T.: 0.000 min
 Response: 46101797
 Conc: 1705.91 ng/ml

Instrument :
 ECD_O
 ClientSampleId :



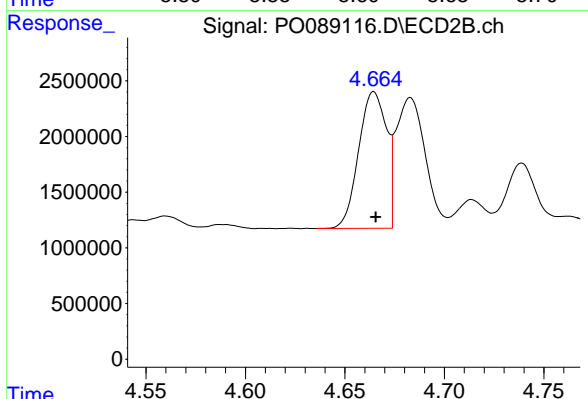
#15 AR-1232-5

R.T.: 5.112 min
 Delta R.T.: -0.001 min
 Response: 20783691
 Conc: 1780.74 ng/ml



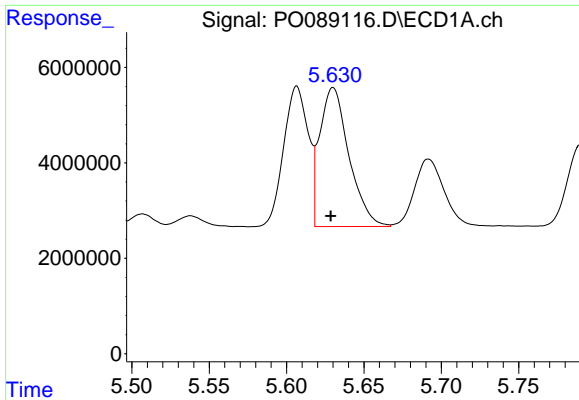
#16 AR-1242-1

R.T.: 5.607 min
 Delta R.T.: 0.000 min
 Response: 32701309
 Conc: 369.96 ng/ml



#16 AR-1242-1

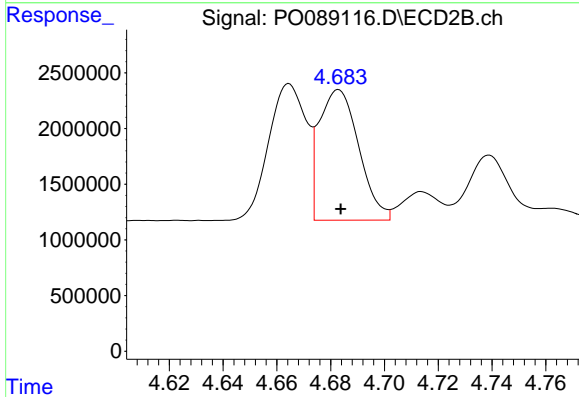
R.T.: 4.665 min
 Delta R.T.: 0.000 min
 Response: 11934868
 Conc: 409.70 ng/ml



#17 AR-1242-2

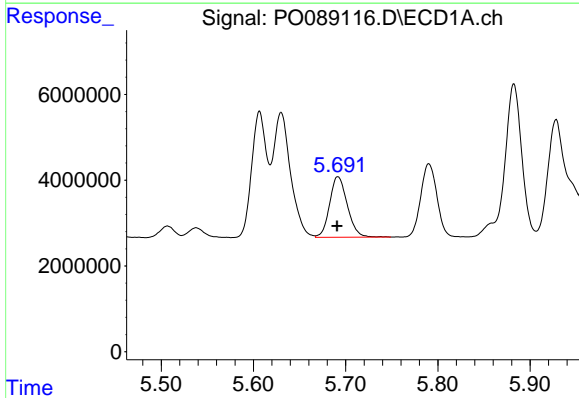
R.T.: 5.630 min
 Delta R.T.: 0.002 min
 Response: 38210869
 Conc: 308.73 ng/ml

Instrument :
 ECD_O
 ClientSampleId :



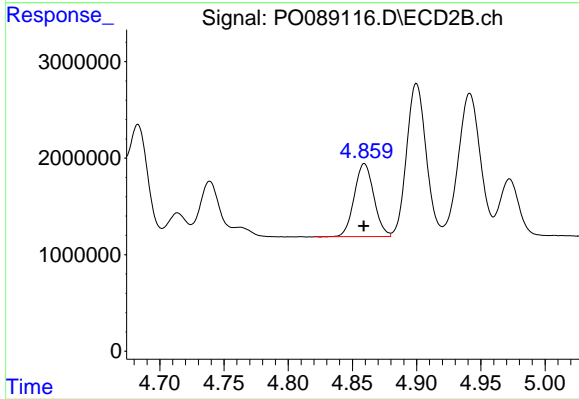
#17 AR-1242-2

R.T.: 4.683 min
 Delta R.T.: 0.000 min
 Response: 11974898
 Conc: 302.28 ng/ml



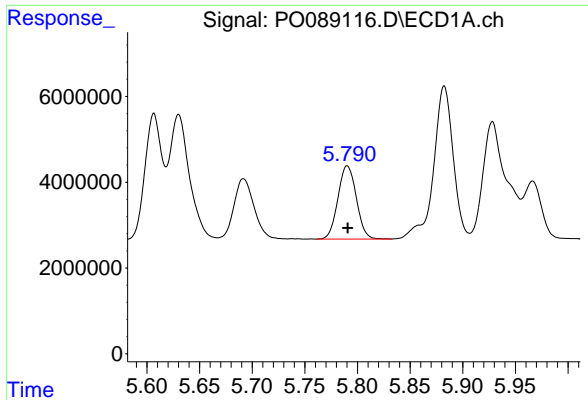
#18 AR-1242-3

R.T.: 5.692 min
 Delta R.T.: 0.000 min
 Response: 18807226
 Conc: 244.68 ng/ml



#18 AR-1242-3

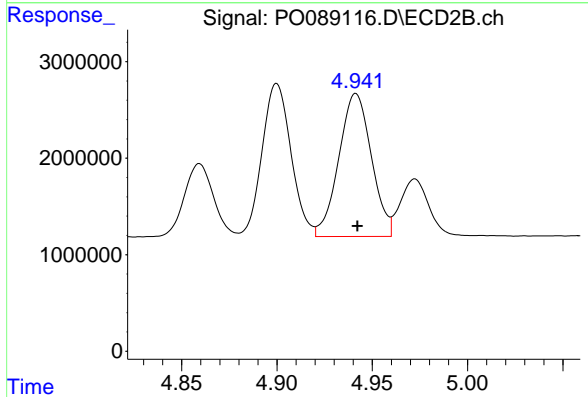
R.T.: 4.859 min
 Delta R.T.: 0.000 min
 Response: 8022762
 Conc: 376.53 ng/ml



#19 AR-1242-4

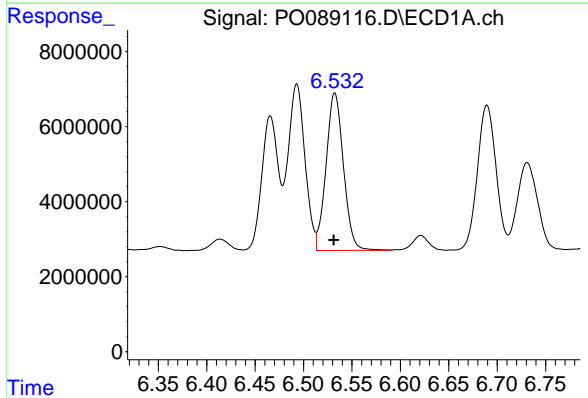
R.T.: 5.790 min
 Delta R.T.: 0.000 min
 Response: 20807686
 Conc: 335.02 ng/ml

Instrument :
 ECD_O
 ClientSampleId :



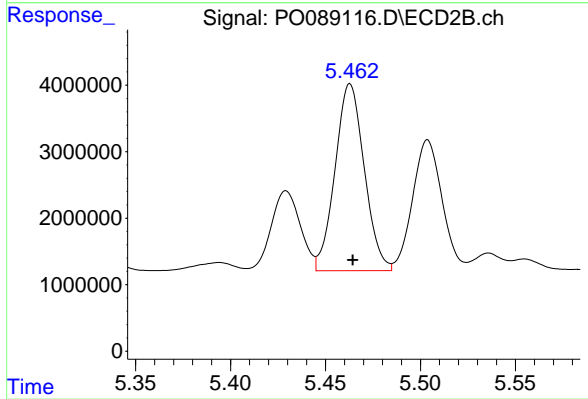
#19 AR-1242-4

R.T.: 4.941 min
 Delta R.T.: 0.000 min
 Response: 17643357
 Conc: 810.86 ng/ml



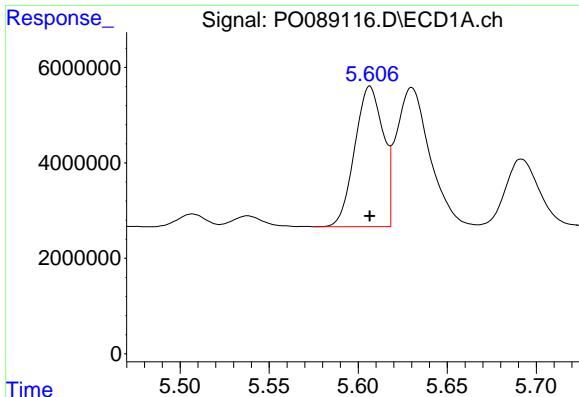
#20 AR-1242-5

R.T.: 6.532 min
 Delta R.T.: 0.001 min
 Response: 52579391
 Conc: 816.80 ng/ml



#20 AR-1242-5

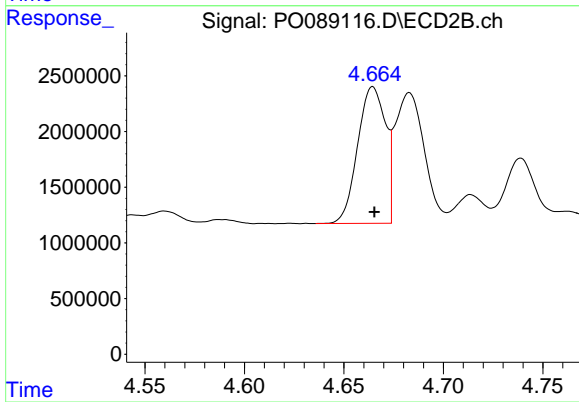
R.T.: 5.463 min
 Delta R.T.: -0.001 min
 Response: 30137268
 Conc: 1103.23 ng/ml



#21 AR-1248-1

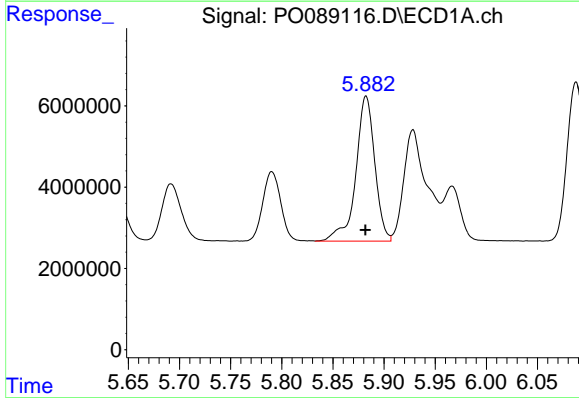
R.T.: 5.607 min
 Delta R.T.: 0.000 min
 Response: 32701309
 Conc: 474.87 ng/ml

Instrument :
 ECD_O
 ClientSampleId :



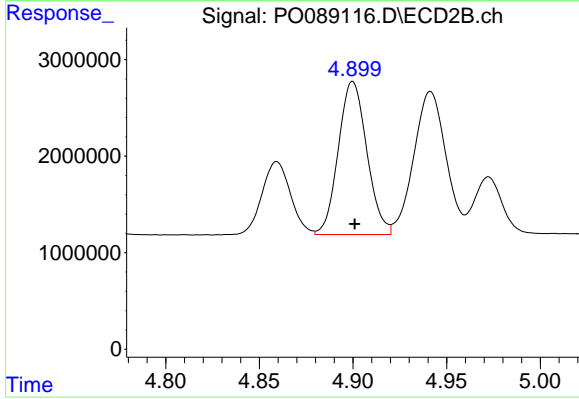
#21 AR-1248-1

R.T.: 4.665 min
 Delta R.T.: 0.000 min
 Response: 11934868
 Conc: 531.40 ng/ml



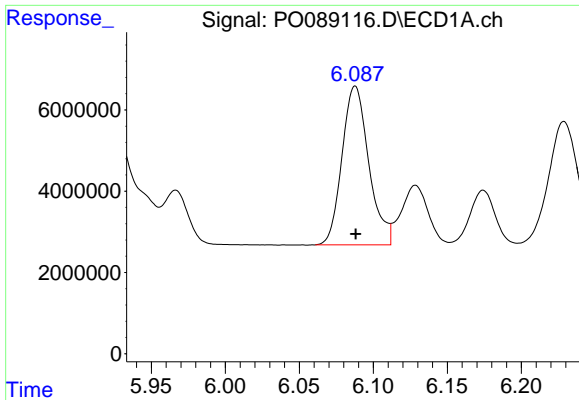
#22 AR-1248-2

R.T.: 5.882 min
 Delta R.T.: 0.000 min
 Response: 46101797
 Conc: 467.12 ng/ml



#22 AR-1248-2

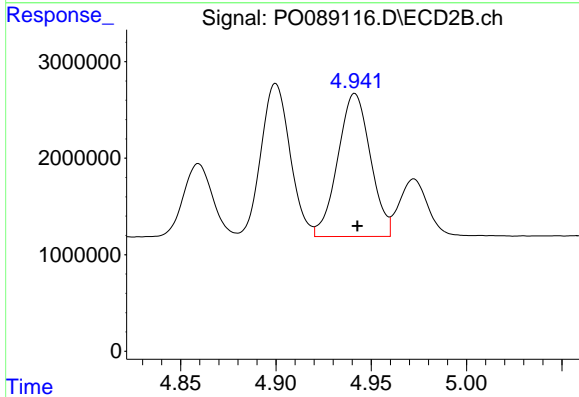
R.T.: 4.900 min
 Delta R.T.: -0.001 min
 Response: 16799905
 Conc: 513.62 ng/ml



#23 AR-1248-3

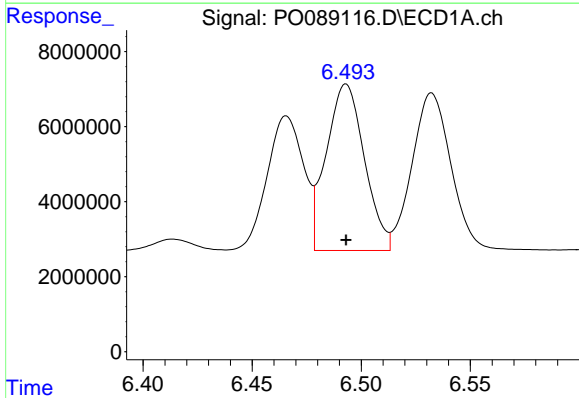
R.T.: 6.088 min
 Delta R.T.: 0.000 min
 Response: 49190582
 Conc: 469.53 ng/ml

Instrument :
 ECD_O
 ClientSampleId :



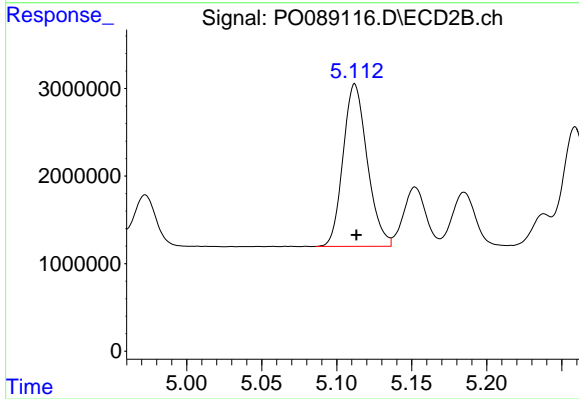
#23 AR-1248-3

R.T.: 4.941 min
 Delta R.T.: -0.001 min
 Response: 17643357
 Conc: 517.55 ng/ml



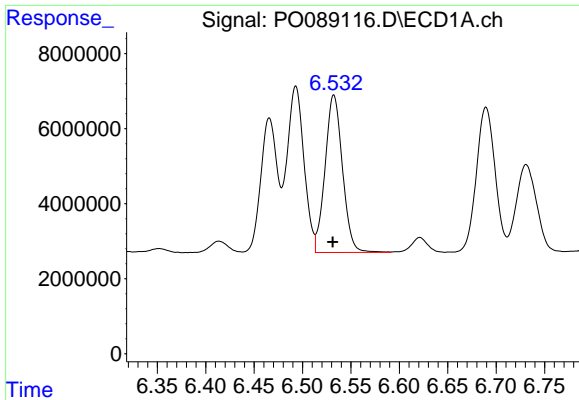
#24 AR-1248-4

R.T.: 6.493 min
 Delta R.T.: 0.000 min
 Response: 54069526
 Conc: 469.95 ng/ml



#24 AR-1248-4

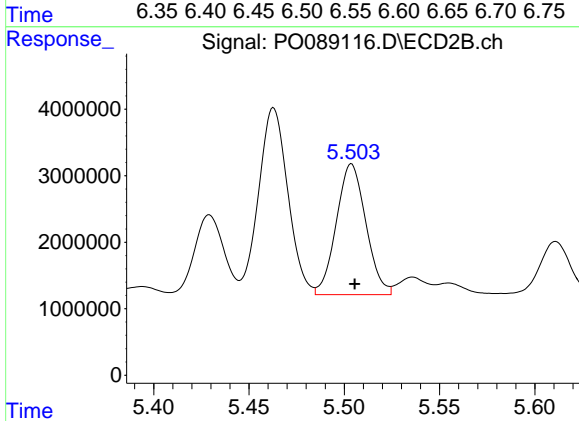
R.T.: 5.112 min
 Delta R.T.: -0.001 min
 Response: 20783691
 Conc: 509.90 ng/ml



#25 AR-1248-5

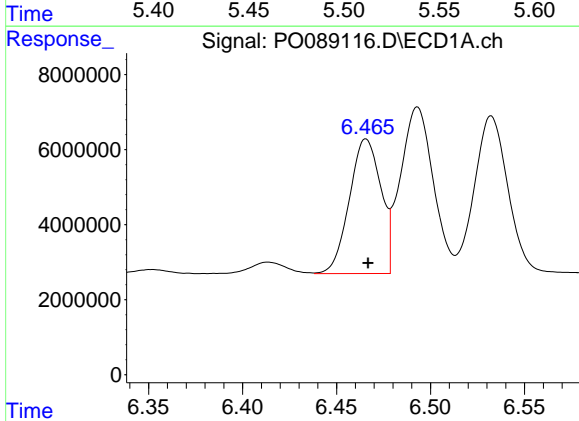
R.T.: 6.532 min
 Delta R.T.: 0.000 min
 Response: 52579391
 Conc: 464.55 ng/ml

Instrument :
 ECD_O
 ClientSampleId :



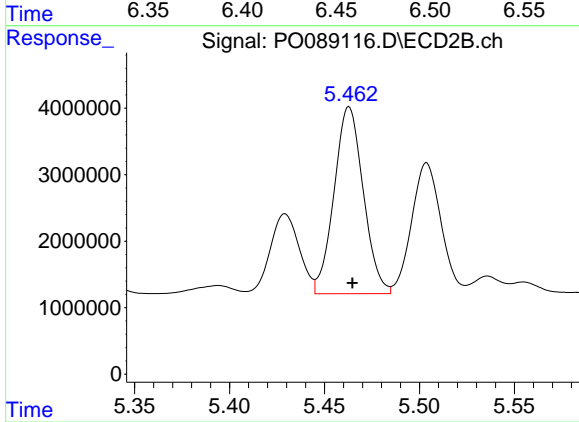
#25 AR-1248-5

R.T.: 5.504 min
 Delta R.T.: -0.002 min
 Response: 21261016
 Conc: 535.02 ng/ml



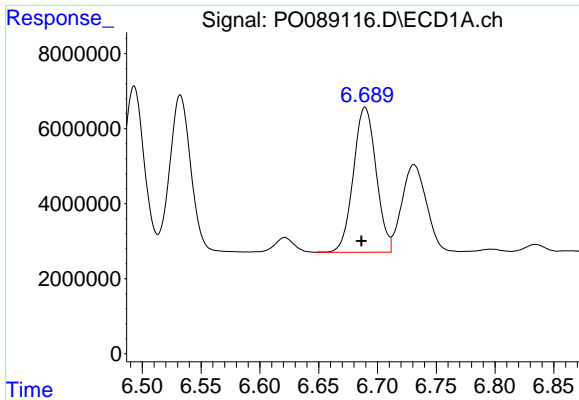
#26 AR-1254-1

R.T.: 6.466 min
 Delta R.T.: -0.001 min
 Response: 41877305
 Conc: 364.10 ng/ml



#26 AR-1254-1

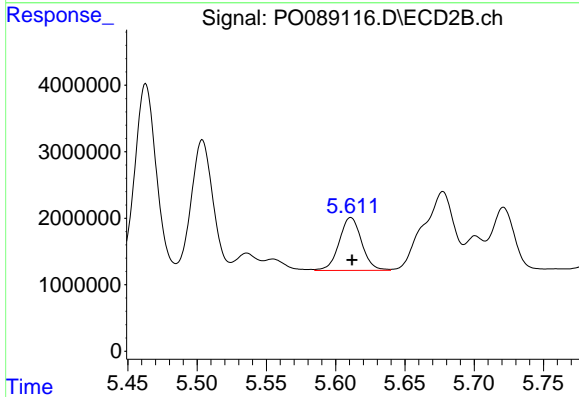
R.T.: 5.463 min
 Delta R.T.: -0.002 min
 Response: 30137268
 Conc: 509.41 ng/ml



#27 AR-1254-2

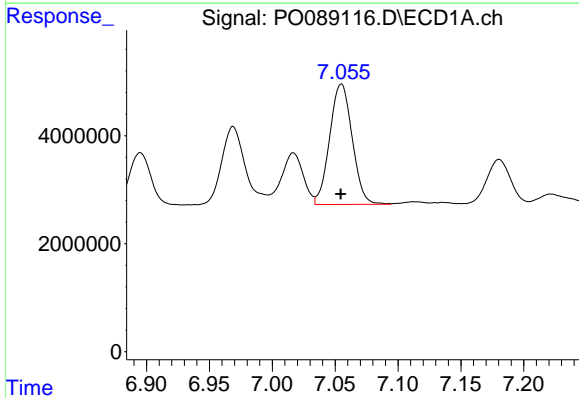
R.T.: 6.689 min
 Delta R.T.: 0.003 min
 Response: 52061457
 Conc: 305.95 ng/ml

Instrument :
 ECD_O
 ClientSampleId :



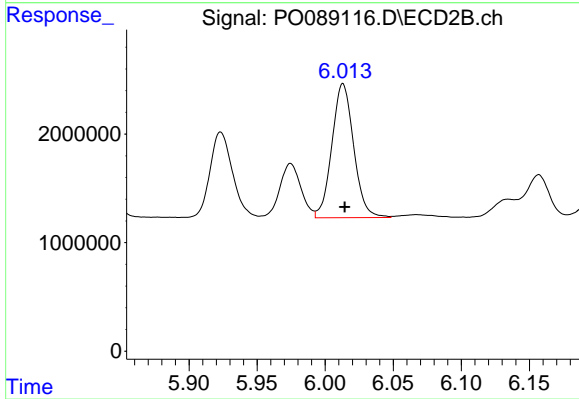
#27 AR-1254-2

R.T.: 5.611 min
 Delta R.T.: -0.001 min
 Response: 8975620
 Conc: 175.95 ng/ml



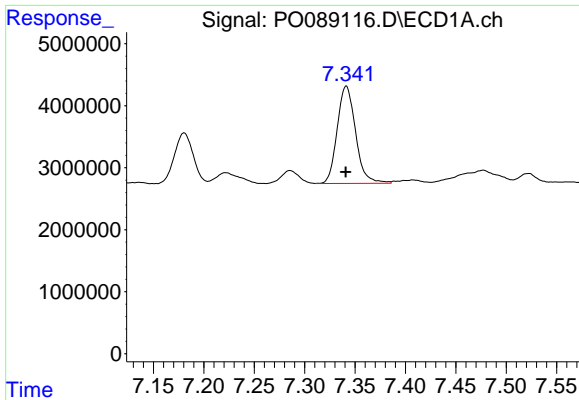
#28 AR-1254-3

R.T.: 7.055 min
 Delta R.T.: 0.000 min
 Response: 27868467
 Conc: 160.46 ng/ml



#28 AR-1254-3

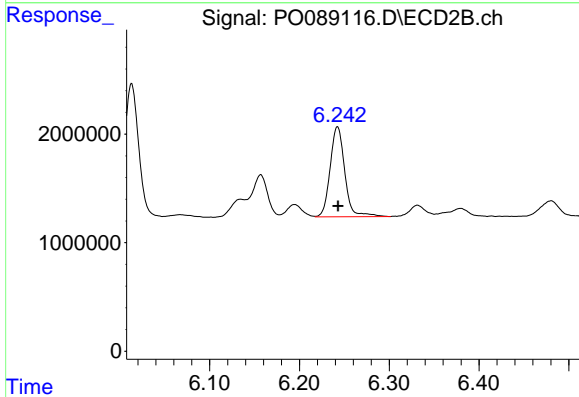
R.T.: 6.013 min
 Delta R.T.: -0.001 min
 Response: 13749692
 Conc: 174.10 ng/ml



#29 AR-1254-4

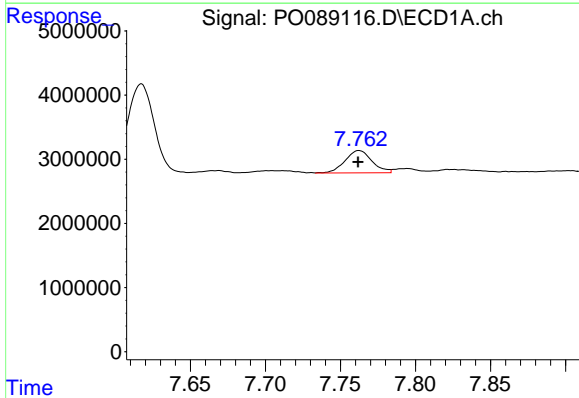
R.T.: 7.341 min
 Delta R.T.: 0.000 min
 Response: 19929953
 Conc: 159.66 ng/ml

Instrument :
 ECD_O
 ClientSampleId :



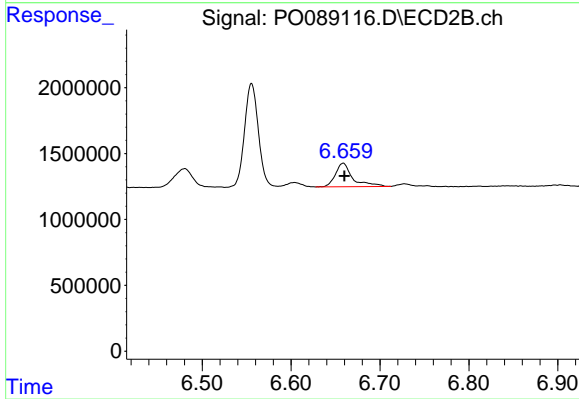
#29 AR-1254-4

R.T.: 6.242 min
 Delta R.T.: 0.000 min
 Response: 9416115
 Conc: 189.96 ng/ml



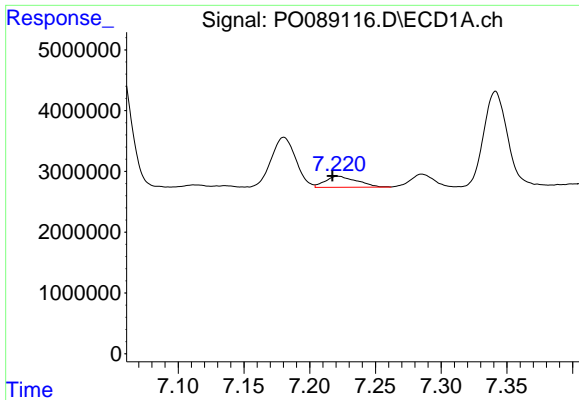
#30 AR-1254-5

R.T.: 7.762 min
 Delta R.T.: 0.000 min
 Response: 4350537
 Conc: 33.78 ng/ml



#30 AR-1254-5

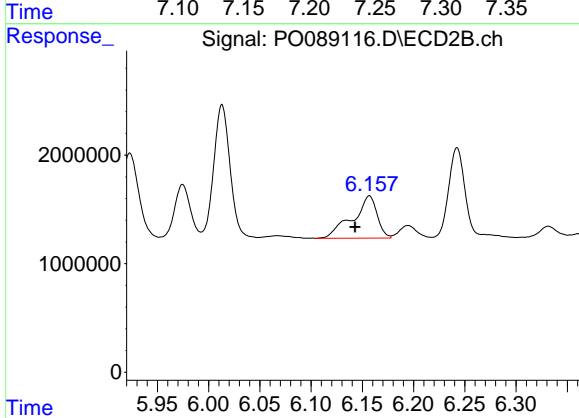
R.T.: 6.659 min
 Delta R.T.: -0.001 min
 Response: 2404976
 Conc: 35.57 ng/ml



#31 AR-1260-1

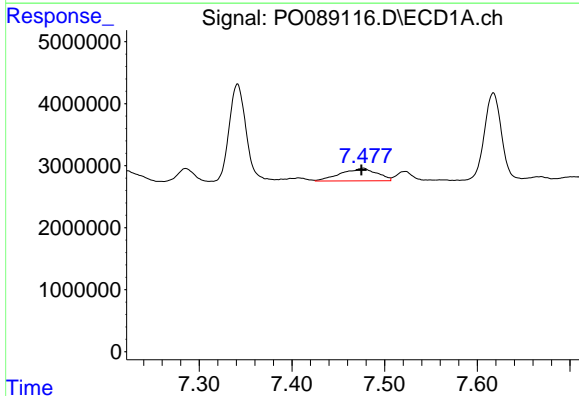
R.T.: 7.222 min
 Delta R.T.: 0.005 min
 Response: 3021309
 Conc: 22.44 ng/ml

Instrument :
 ECD_O
 ClientSampleId :



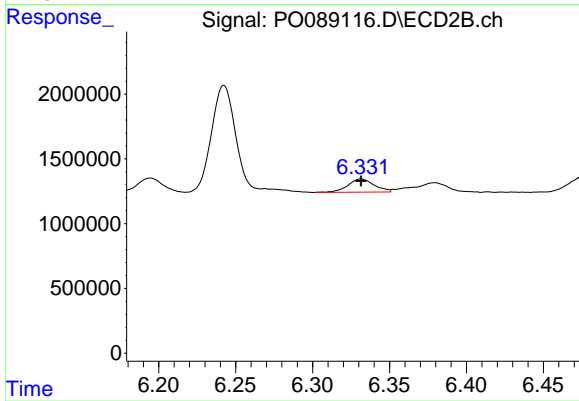
#31 AR-1260-1

R.T.: 6.157 min
 Delta R.T.: 0.014 min
 Response: 6496777
 Conc: 115.80 ng/ml



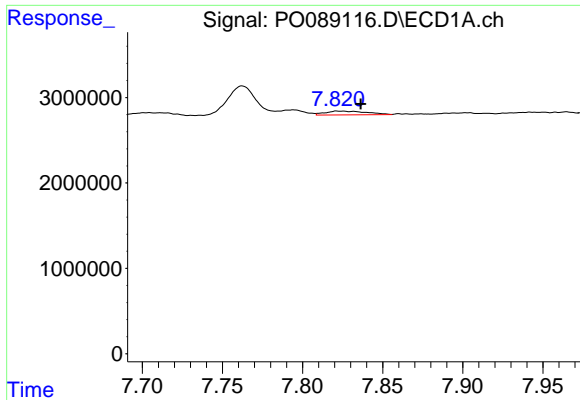
#32 AR-1260-2

R.T.: 7.477 min
 Delta R.T.: 0.002 min
 Response: 5453648
 Conc: 35.73 ng/ml



#32 AR-1260-2

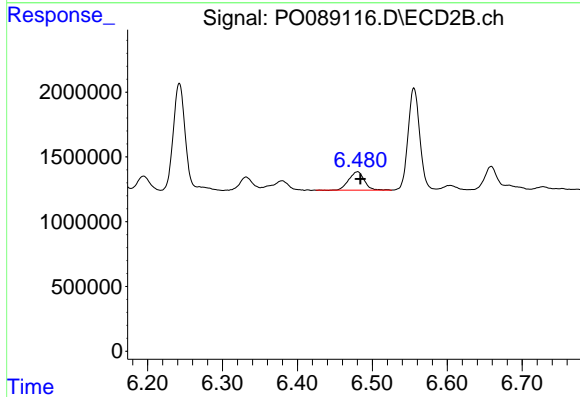
R.T.: 6.331 min
 Delta R.T.: 0.000 min
 Response: 1222427
 Conc: 17.99 ng/ml



#33 AR-1260-3

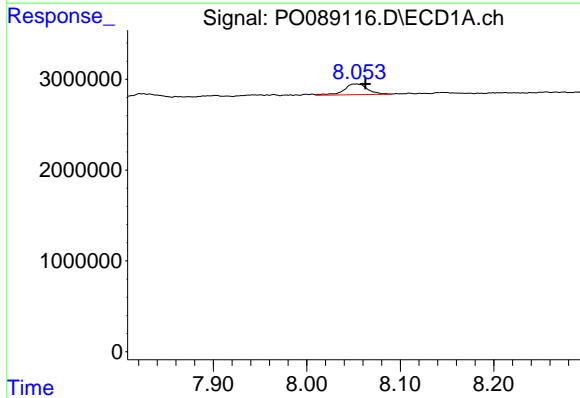
R.T.: 7.822 min
 Delta R.T.: -0.014 min
 Response: 802639
 Conc: 7.18 ng/ml

Instrument :
 ECD_O
 ClientSampleId :



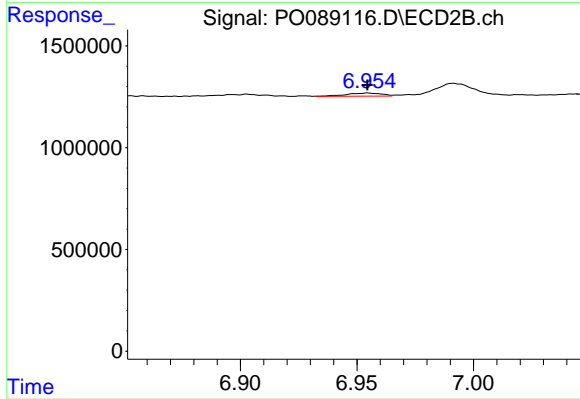
#33 AR-1260-3

R.T.: 6.480 min
 Delta R.T.: -0.004 min
 Response: 2077132
 Conc: 33.85 ng/ml



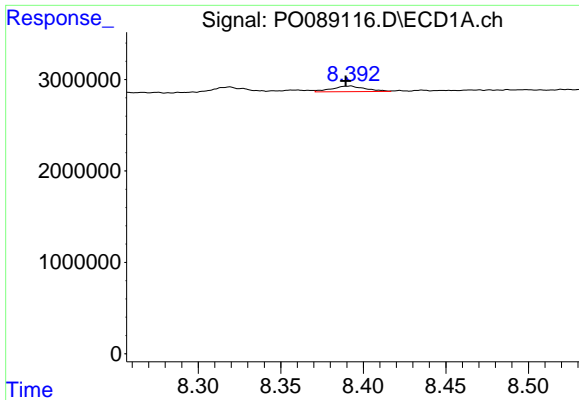
#34 AR-1260-4

R.T.: 8.053 min
 Delta R.T.: -0.010 min
 Response: 2066999
 Conc: 16.74 ng/ml



#34 AR-1260-4

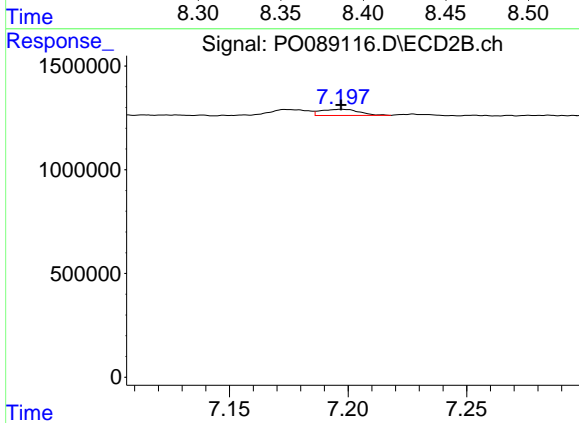
R.T.: 6.955 min
 Delta R.T.: 0.000 min
 Response: 158138
 Conc: 3.14 ng/ml



#35 AR-1260-5

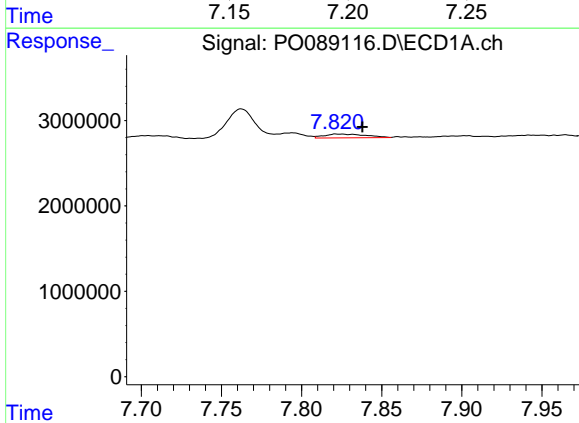
R.T.: 8.392 min
 Delta R.T.: 0.002 min
 Response: 871787
 Conc: 3.65 ng/ml

Instrument :
 ECD_O
 ClientSampleId :



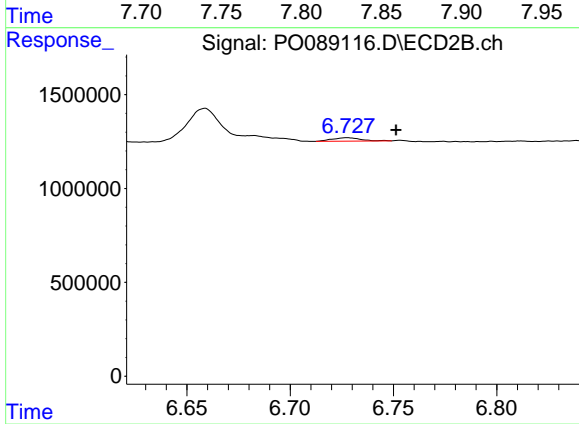
#35 AR-1260-5

R.T.: 7.197 min
 Delta R.T.: 0.000 min
 Response: 337273
 Conc: 2.95 ng/ml



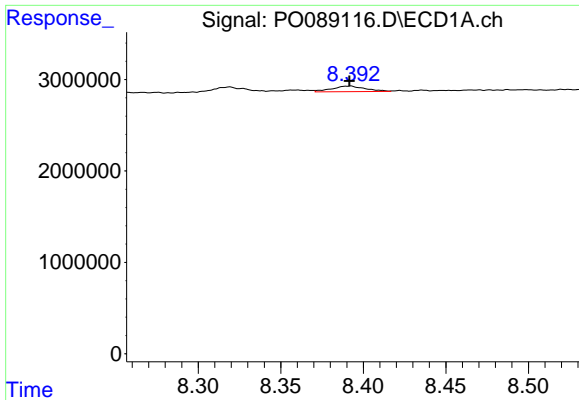
#36 AR-1262-1

R.T.: 7.822 min
 Delta R.T.: -0.016 min
 Response: 802639
 Conc: 5.32 ng/ml



#36 AR-1262-1

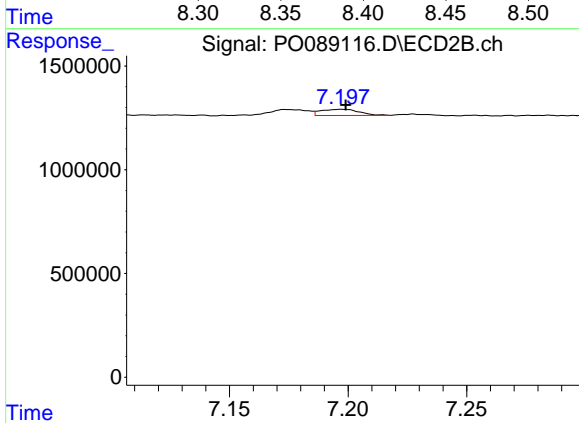
R.T.: 6.728 min
 Delta R.T.: -0.024 min
 Response: 169956
 Conc: 6.00 ng/ml



#37 AR-1262-2

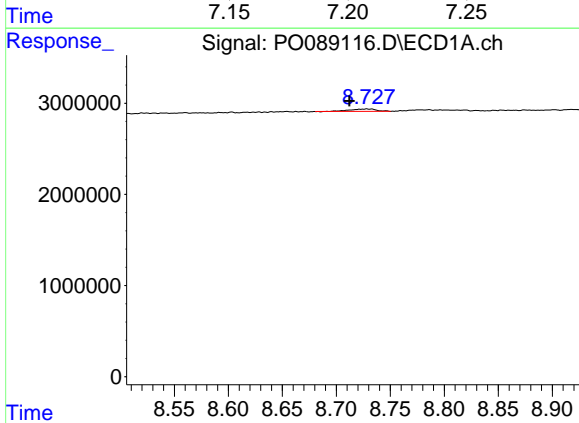
R.T.: 8.392 min
 Delta R.T.: 0.000 min
 Response: 871787
 Conc: 3.42 ng/ml

Instrument :
 ECD_O
 ClientSampleId :



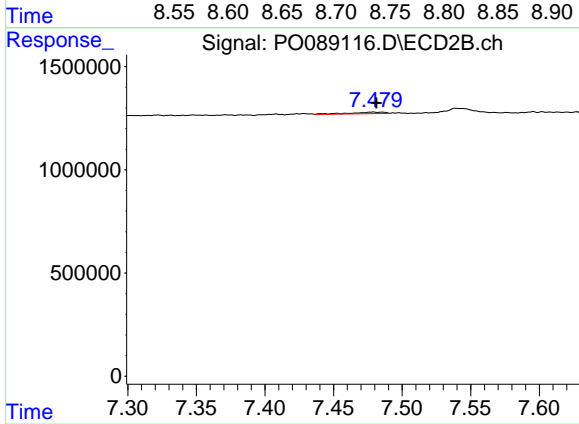
#37 AR-1262-2

R.T.: 7.197 min
 Delta R.T.: -0.002 min
 Response: 337273
 Conc: 2.80 ng/ml



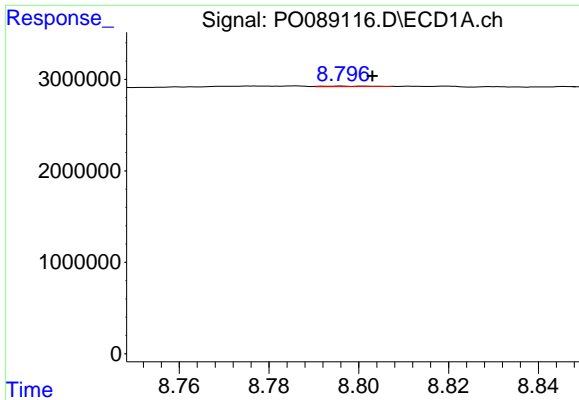
#38 AR-1262-3

R.T.: 8.729 min
 Delta R.T.: 0.016 min
 Response: 447192
 Conc: 2.62 ng/ml



#38 AR-1262-3

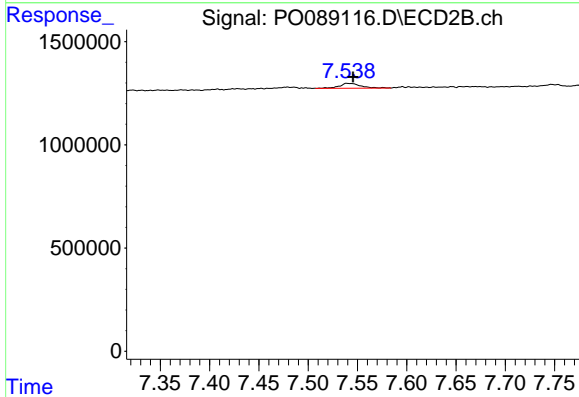
R.T.: 7.479 min
 Delta R.T.: -0.002 min
 Response: 127717
 Conc: 2.65 ng/ml



#39 AR-1262-4

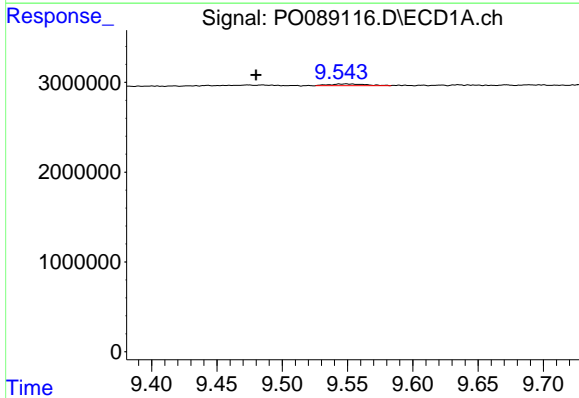
R.T.: 8.796 min
 Delta R.T.: -0.007 min
 Response: 33950
 Conc: 0.49 ng/ml

Instrument :
 ECD_O
 ClientSampleId :



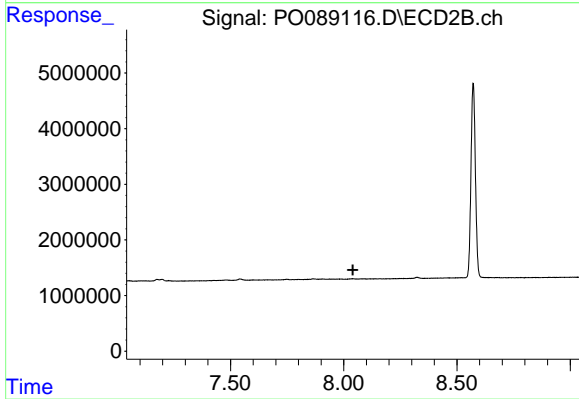
#39 AR-1262-4

R.T.: 7.540 min
 Delta R.T.: -0.006 min
 Response: 364076
 Conc: 4.07 ng/ml



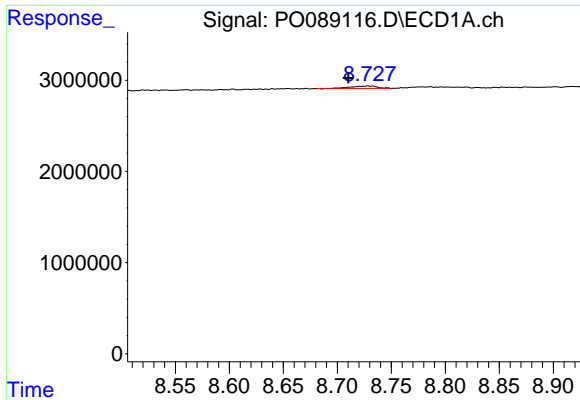
#40 AR-1262-5

R.T.: 9.549 min
 Delta R.T.: 0.069 min
 Response: 371527
 Conc: 3.92 ng/ml



#40 AR-1262-5

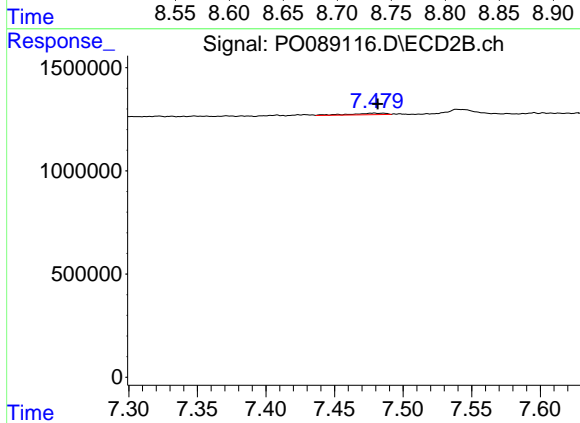
R.T.: 0.000 min
 Exp R.T. : 8.040 min
 Response: 0
 Conc: N.D.



#41 AR-1268-1

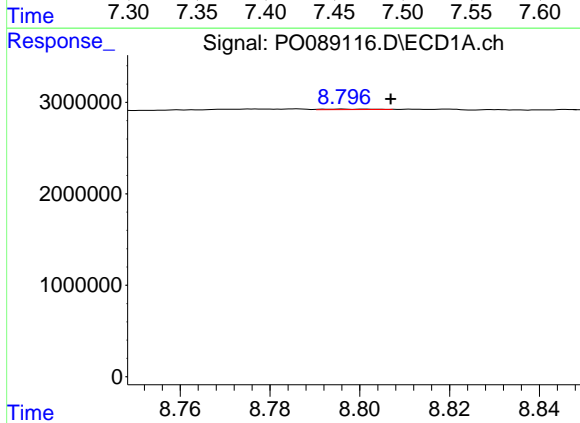
R.T.: 8.729 min
 Delta R.T.: 0.018 min
 Response: 447192
 Conc: 1.55 ng/ml

Instrument :
 ECD_O
 ClientSampleId :



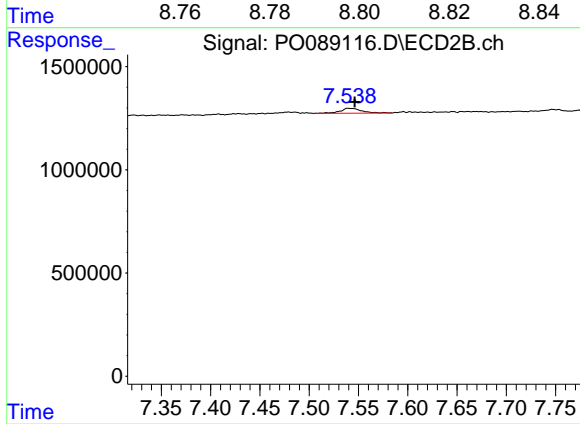
#41 AR-1268-1

R.T.: 7.479 min
 Delta R.T.: -0.003 min
 Response: 127717
 Conc: 0.89 ng/ml



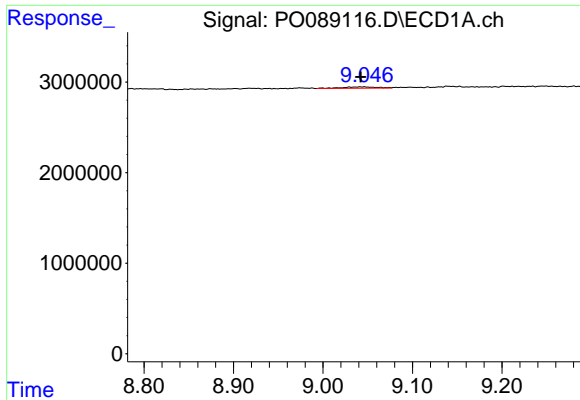
#42 AR-1268-2

R.T.: 8.796 min
 Delta R.T.: -0.011 min
 Response: 33950
 Conc: 0.13 ng/ml



#42 AR-1268-2

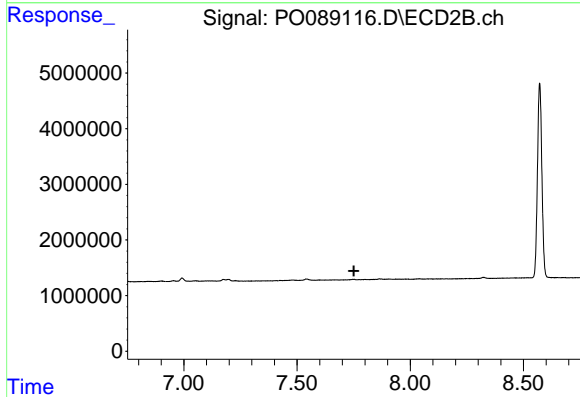
R.T.: 7.540 min
 Delta R.T.: -0.007 min
 Response: 364076
 Conc: 2.83 ng/ml



#43 AR-1268-3

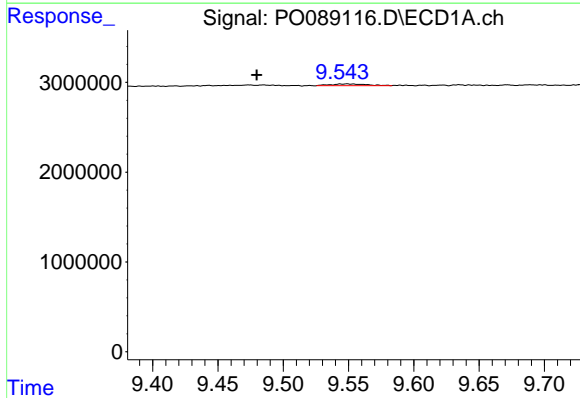
R.T.: 9.046 min
 Delta R.T.: 0.004 min
 Response: 399520
 Conc: 1.72 ng/ml

Instrument :
 ECD_O
 ClientSampleId :



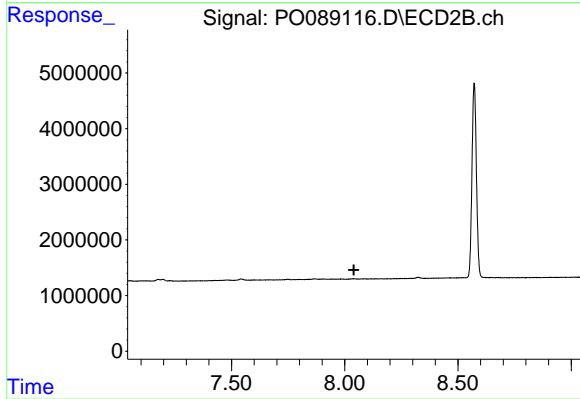
#43 AR-1268-3

R.T.: 0.000 min
 Exp R.T. : 7.751 min
 Response: 0
 Conc: N.D.



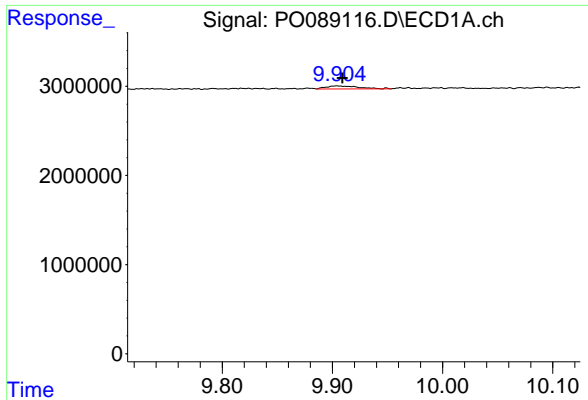
#44 AR-1268-4

R.T.: 9.549 min
 Delta R.T.: 0.069 min
 Response: 371527
 Conc: 3.76 ng/ml



#44 AR-1268-4

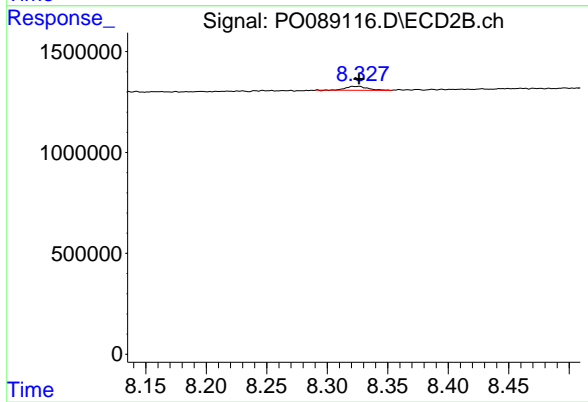
R.T.: 0.000 min
 Exp R.T. : 8.041 min
 Response: 0
 Conc: N.D.



#45 AR-1268-5

R.T.: 9.904 min
Delta R.T.: -0.005 min
Response: 704206
Conc: 0.97 ng/ml

Instrument :
ECD_O
ClientSampleId :



#45 AR-1268-5

R.T.: 8.326 min
Delta R.T.: 0.000 min
Response: 232416
Conc: 0.71 ng/ml